



The GLE.



Mercedes-Benz



A silver Mercedes-Benz SUV is partially visible on the left side of the frame, parked on a dark, gravelly shore. The car's front wheel and headlight are prominent. In the background, a large, calm lake reflects the surrounding landscape. The far shore is lined with a dense forest of evergreen trees. Beyond the forest, a range of mountains rises, with some peaks covered in snow and others showing patches of brown, possibly from autumn foliage or sparse vegetation. The sky is bright and clear, suggesting a sunny day. The overall scene conveys a sense of tranquility and natural beauty.

Inhale freedom. Exude freedom.

Dynamism. Assertiveness. The art of letting go. Those able to combine these capabilities exude a special calm, appreciate their achievements and know how to enjoy every moment intensely. Experience the new premium SUV from Mercedes-Benz. The new GLE. Makes the best of any ground.



In a familiar position, above it all. Supreme comfort abounds in the interior of the new GLE, which affords a generous feeling of space with its high-quality appointments and materials. And wherever the journey may take you, Mercedes connect me keeps you in touch with an even wider world: innovative connectivity services open up new and exciting digital-networking options.



Enjoy every bit of the way there. The Controller of the DYNAMIC SELECT lets you select your desired driving experience. There are up to six modes to choose from, depending on equipment: from comfort to sport to individual. And with an optional Off-Road Engineering package for all those exciting highs and lows.

Master of all disciplines.
At a new level.





The new GLE 500 e 4MATIC. Electrifying power.

Enter a new era with pioneering PLUG-IN HYBRID technology. The new GLE 500 e 4MATIC combines a powerful 3.0-litre V6 combustion engine and an electric motor with an externally chargeable lithium-ion high-voltage battery. The V6 unit develops 245 kW (333 hp), has a maximum torque of 480 Nm and achieves a top speed of 245 km/h. Together with the electric motor's 85 kW (116 hp) and 340 Nm of torque, combined fuel consumption is 3.7–3.3 l/100 km. Thanks to Intelligent HYBRID – the highly efficient,

anticipatory operating strategy. Every braking phase provides an energy boost, while the combustion engine is deactivated during overrun phases. Functions such as the optional radar-based recuperation and the four operating modes ensure impressive energy performance. When powered solely by the electric motor, the vehicle has a range of up to 30 km and a top speed of 130 km/h – with zero local emissions.



GLE 500 e 4MATIC

The PLUG-IN HYBRID technology allows fast external charging from 20 to 100%¹ via a wallbox in just two hours or via a standard socket in a good four hours.

- 1 | 3.0-litre V6 petrol engine.
- 2 | Recuperative braking system.
- 3 | Electric motor.
- 4 | Lithium-ion high-voltage battery.
- 5 | Battery charging socket.

¹ Charging time 20–100%, ranging from 1.9 to 4 h, depending on the power source (400 V/16 A–230 V/8 A).

Driving Assistance package Plus. Your personal assistant.

Intervening where necessary. Holding back where possible. This poise and assurance is part of the optional Driving Assistance package Plus. It combines safety and assistance systems that take the strain off the driver, reduce accident risks and improve protection of the occupants and other road users. Brake Assist BAS PLUS with Cross-Traffic Assist and PRE-SAFE® Brake can reduce the risk of accidents at junctions, rear-end collisions and collisions with pedestrians, particularly in urban traffic. Active Lane Keeping Assist and Active Blind Spot Assist provide support when the vehicle unintentionally leaves its

lane or if there is a risk of a collision with other vehicles when changing lanes. One-sided braking intervention can help return the vehicle to its lane and prevent an accident. PRE-SAFE® PLUS extends the functions of the PRE-SAFE® occupant protection system with specific measures when a rear-end collision threatens. DISTRONIC PLUS with Steering Assist and Stop&Go Pilot helps the driver to maintain a safe distance from the vehicle in front and stay in the centre of the lane.



Standard equipment and EXCLUSIVE interior.

The best as standard. The roof rails, the beltline trim strip and the load sill guard feature a chrome look. THERMATIC automatic climate control ensures an ideal interior climate when on the move, while Crosswind Assist enhances safety. The optional EXCLUSIVE interior includes comfort seats in leather with an exclusive seat upholstery layout and a premium dashboard in ARTICO man-made leather.

Illustration shows optional 5-twin-spoke light-alloy wheels, Code 65R.



AMG Line exterior and interior.

Dynamism even when at a standstill. Both on the outside, with specific AMG front and rear apron, AMG side sill panels in the body colour and AMG 5-spoke light-alloy wheels painted titanium grey with a high-shine finish. And in the likewise optional AMG Line interior where sports seats in ARTICO man-made leather with contrasting topstitching, the easy-grip 3-spoke multifunction sports steering wheel and the sports pedals underscore the sporty character.



Night package.

Sporty and expressive. Based on the AMG bodystyling, the optional Night package adds further emphasis with high-gloss black elements such as the louvre in the radiator trim, the exterior mirrors and the simulated front and rear underguards. The roof rails and the beltline trim strips are kept in black. Beguiling: the AMG 5-twin-spoke light-alloy wheels. Dark-tinted glass provides a degree of privacy from the rear doors onwards.



Mercedes-AMG GLE 63 4MATIC.

The embodiment of passion for high performance: with hallmark AMG features such as the front and rear apron, painted side skirts and flared wheel arches. Dynamic: the AMG multi-spoke light-alloy wheels painted titanium grey with a high-shine finish. Powerful: silver-painted brake callipers. A cockpit with a racing-car feel: with AMG sports seats in black nappa leather, AMG performance steering wheel, dashboard in ARTICO man-made leather and light longitudinal-grain aluminium trim.



Upholstery and trim.

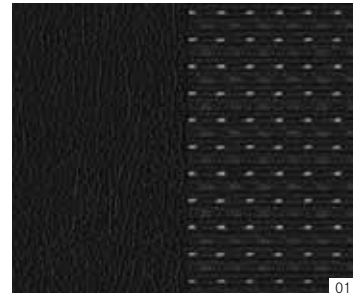
Upholstery

- 011 black
- 111 black^{1, 2}
- 114 espresso brown^{1, 2}
- 115 ginger beige/espresso brown^{1, 2}
- 121 black^{1, 3}
- 211 black¹
- 215 ginger beige/espresso brown¹
- 224 saddle brown/black¹
- 228 crystal grey/black¹
- 245 ginger beige/black¹
- 531 black⁴
- 534 espresso brown/black^{4, 5}
- 535 porcelain/black^{4, 5}
- 541 black with grey contrasting topstitching⁵
- 811 black pearl/black^{1, 3}
- 831 black⁶
- 834 espresso brown/black⁶
- 835 porcelain/black⁶
- 855 porcelain/black^{1, 3}
- 954 espresso brown¹
- 955 porcelain/black¹

Trim

- 739 light longitudinal-grain aluminium
 - 734 high-gloss brown eucalyptus wood¹
 - 731 high-gloss brown burr walnut wood¹
 - H09 brown open-pore ash wood¹
 - 729 high-gloss black poplar wood¹
 - H21 black piano lacquer¹
 - H10 AMG carbon fibre/piano lacquer in black¹
-

ARTICO man-made leather/fabric



ARTICO man-made leather



Leather



¹ Optional extra. ² Standard for GLE 500 4MATIC. ³ Only in conjunction with AMG Line interior.
⁴ Optional for Mercedes-AMG GLE 63 4MATIC. ⁵ Standard for Mercedes-AMG GLE 63 S 4MATIC.
⁶ Standard for Mercedes-AMG GLE 63 4MATIC.

Nappa leather/leather



811



855

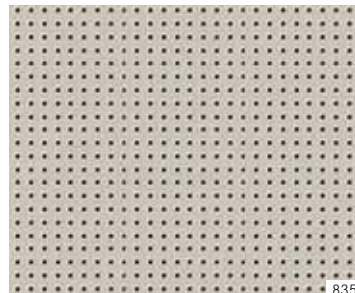
AMG nappa leather



831



834



835

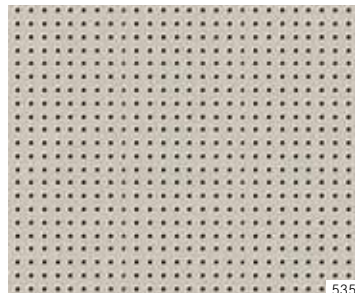
AMG Exclusive nappa leather



531
541



534



535

designo Exclusive nappa leather



954



955

Trim



739



734



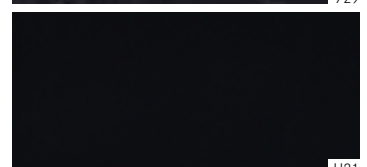
731



H09



729



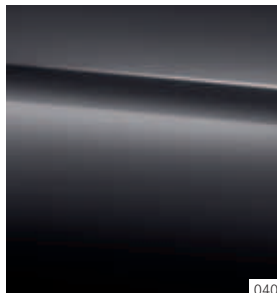
H21



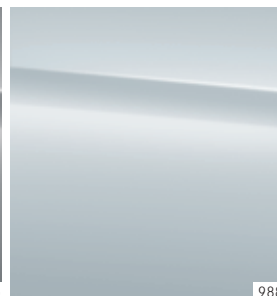
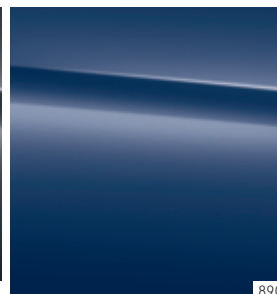
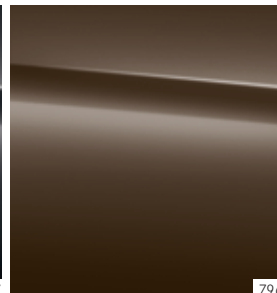
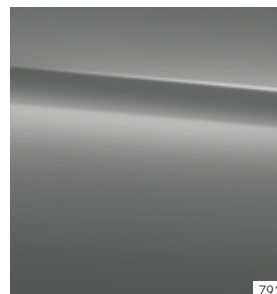
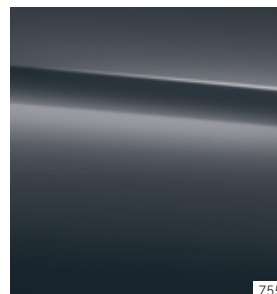
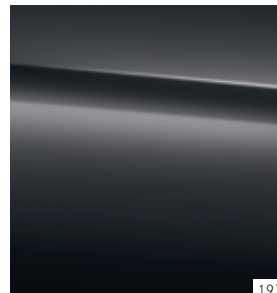
H10

Paintwork.

Non-metallic paints



Metallic paints¹



designo paints¹



Non-metallic paints

- 040 black
- 149 polar white

Metallic paints¹

- 197 obsidian black
- 755 tenorite grey
- 775 iridium silver
- 792 palladium silver
- 796 citrine brown
- 890 cavansite blue
- 988 diamond silver

designo paints¹

- 799 designo diamond white bright
 - 996 designo hyacinth red metallic
-

¹ Optional extra.

Technical data.

No. of cylinders/arrangement
Total displacement in cc
Rated output ¹ in kW (hp) at rpm
Rated torque ¹ in Nm at rpm
Transmission
Acceleration from 0 to 100 km/h in s
Top speed, approx. in km/h
Tyre size – front axle, rear axle
Fuel
Fuel consumption ³ in l/100 km
Urban
Extra-urban
Combined
CO ₂ emissions ³ in g/km, combined
Emission class ⁴ /efficiency class ⁵
Tank capacity, of which reserve, approx. in l
Boot capacity ⁶ in l
Turning circle diameter in m
Kerb weight ⁷ in kg
Perm. GVW in kg
Length ⁸ /width incl. mirrors ⁸ in mm
Wheelbase ⁸ in mm

DIESEL ENGINES

GLE 250 d	GLE 250 d 4MATIC	GLE 350 d 4MATIC
4/in-line	4/in-line	6/V
2143	2143	2987
150 (204)/3800	150 (204)/3800	190 (258)/3400
500/1600–1800	500/1600–1800	620/1600
9G-TRONIC	9G-TRONIC	9G-TRONIC
8.6	8.6	7.1
210	210	225
235/65 R 17	235/65 R 17	235/65 R 17
Diesel	Diesel	Diesel
6.1–5.9	6.6–6.3	7.3–7.2
5.3–5.0	5.5–5.3	6.2–5.9
5.6–5.4	5.9–5.7	6.6–6.4
146–140	156–149	179–169
Euro 6/A+	Euro 6/A	Euro 6/B
93/12.0	93/12.0	93/12.0
690–2010	690–2010	690–2010
11.80	11.80	11.80
2075	2150	2175
2850	2950	2950
4819/2141	4819/2141	4819/2141
2915	2915	2915

PETROL ENGINES

GLE 400 4MATIC	GLE 500 4MATIC	GLE 500 e 4MATIC	Mercedes-AMG GLE 63 4MATIC	Mercedes-AMG GLE 63 S 4MATIC
6/V	8/V	6/V	8/V	8/V
2996	4663	2996	5461	5461
245 (333)/ 5250–6000	320 (435)/5250	245 (333)/ 5250–6000 85 (116)/3500 ⁹	410 (557)/5750	430 (585)/5500
480/1600–4000	700/1800–4000	480/1600–4000	700/1750–5500	760/1750–5250
7G-TRONIC PLUS	7G-TRONIC PLUS	7G-TRONIC PLUS	AMG SPEEDSHIFT PLUS 7G-TRONIC	AMG SPEEDSHIFT PLUS 7G-TRONIC
6.1	5.3	5.3	4.3	4.2
247	250 ²	245	250 ²	250 ²
255/55 R 18	255/50 R 19	255/50 R 19	265/45 R 20	295/35 ZR 21
Premium petrol	Premium petrol	Premium petrol	Super Plus petrol	Super Plus petrol
11.5–11.2	15.2–14.7	–	15.7	15.7
7.8–7.6	9.5–8.9	–	9.6	9.6
9.2–8.8	11.5–11.0	3.7–3.3	11.8	11.8
215–209	269–258	84–78	276	276
Euro 6/D	Euro 6/F	Euro 6/A+	Euro 6/F	Euro 6/F
93/12.0	93/12.0	80/10.0	93/14.0	93/14.0
690–2010	690–2010	480–1800	690–2010	690–2010
11.80	11.80	11.80	11.80	11.80
2130	2235	2465	2345	2345
2900	2950	3050	3050	3050
4819/2141	4819/2141	4819/2141	4852/2141	4852/2141
2915	2915	2915	2915	2915

The best for your engine:
Genuine Mercedes-Benz engine oils.

¹ Figures for rated output and rated torque in accordance with Directive 80/1269/EEC in the currently applicable version. ² Electronically governed. ³ The figures shown were obtained in accordance with the prescribed measuring processes (Directive [EC] 715/2007 in the currently applicable version). Note according to Directive 1999/94/EC in the currently applicable version: The figures are not based on an individual model and do not constitute part of the product offer; they are provided solely for purposes of comparison between different vehicle models. ⁴ Valid only within the European Union. May vary from country to country. ⁵ Determined on the basis of the measured CO₂ emissions, taking into account the mass of the vehicle. ⁶ Figures in accordance with Directive 70/156/EEC, version 2000/40/EC. ⁷ The figures shown were obtained in accordance with Directive 92/21/EC, version 95/48/EC (kerb weight with fuel tank 90% full, driver, 68 kg, and luggage, 7 kg) for standard-specification vehicles. Optional extras and accessories will generally increase this figure and reduce the payload capacity accordingly. ⁸ The dimensions shown are mean values and apply to standard-specification, unladen vehicles. ⁹ Figures refer to the electric motor. Further technical data can be found at www.mercedes-benz.com

Take-back of end-of-life vehicles. We will be pleased to take back your GLE for environment-friendly disposal in accordance with the European Union (EU) End-Of-Life Vehicle Directive – but that day lies a long way off.

A network of vehicle take-back depots and dismantlers is available to make returning your vehicle as easy as possible for you. You are welcome to return your vehicle to one of these establishments free of charge. In so doing, you will be making a valuable contribution towards closing the recycling cycle and preserving resources.

For further information about the recycling and disposal of end-of-life vehicles, and the take-back conditions, please visit the national Mercedes-Benz website.

Please note: changes may have been made to the product since going to print (03.12.2014). The manufacturer reserves the right to make changes to the design, form, colour or specification during the delivery period, provided these changes, while taking into account the interests of the vendor, can be deemed reasonable with respect to the purchaser. Where the vendor or the manufacturer uses symbols or numbers to describe an order or the subject of an order, no rights may be derived solely from these. The illustrations may include accessories and optional extras which do not form part of the standard specification. Colours may differ slightly from those shown, owing to the limitations of the printing process. This publication may include models and services which are not available in individual countries. Statements about legal and fiscal regulations and effects apply only to the Federal Republic of Germany. Please consult your nearest authorised Mercedes-Benz Passenger Car Dealer about the definitive latest version.

www.mercedes-benz.com