

# The E-Class Coupé



Mercedes-Benz





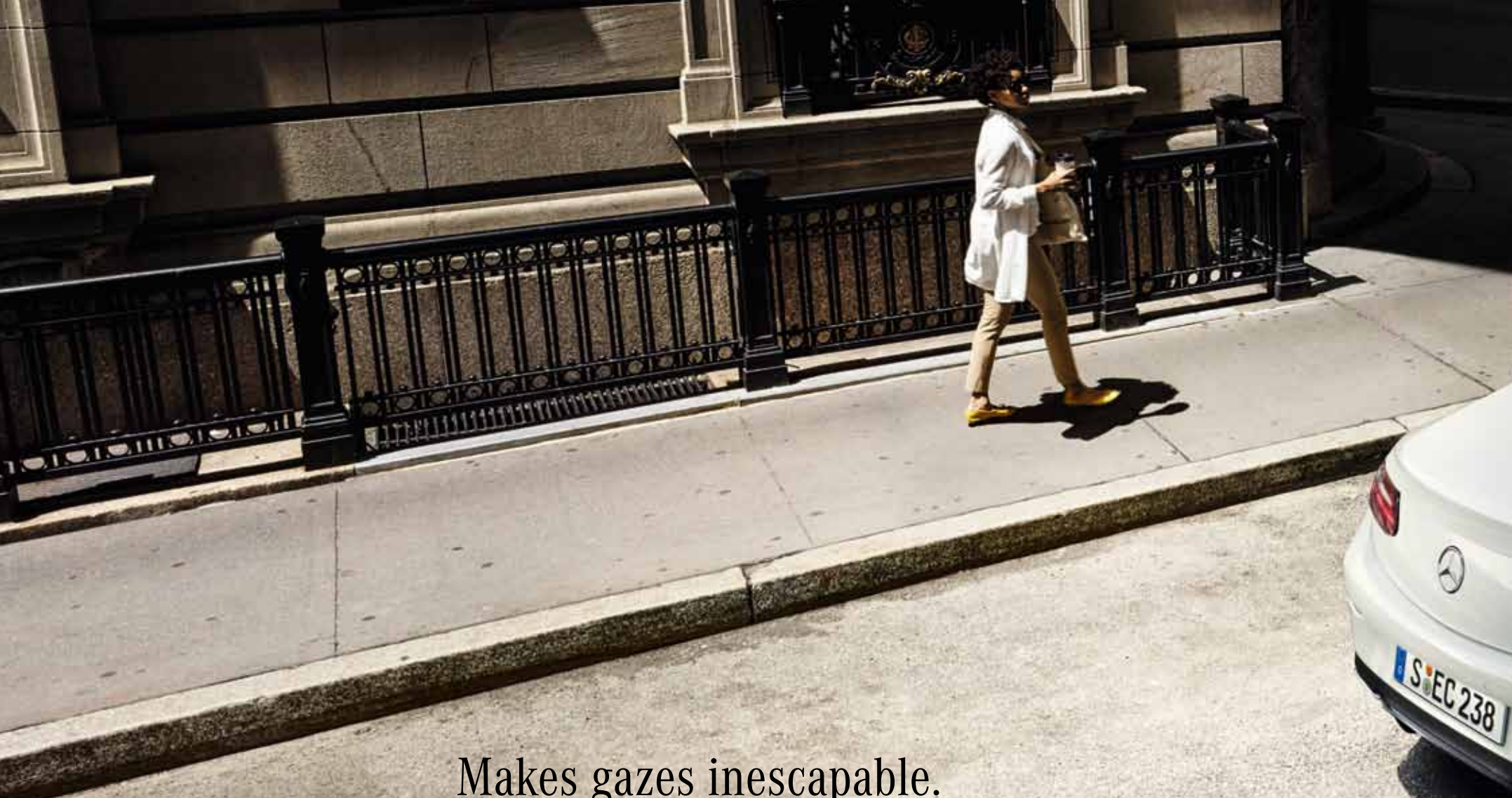
This Brochure is prepared by Daimler AG and it predominantly reflects the capabilities and performance of vehicles sold in Europe. Some characteristics, capabilities performance features and optional extras (e.g. towing systems) may not be available or may not apply in Australia or under Australian conditions. The information in this brochure is therefore indicative, illustrative and provided only for guidance and should not be relied on. To obtain current and accurate information on a vehicle and any options applicable to Australia, contact your local authorized Mercedes-Benz dealer.

# The next icon.

The fine diamond radiator grille and the optional MULTIBEAM LED headlamps shine way out in front: in no other coupé do you experience such a dynamic, comfortable and safe drive. Perfect proportions and Sensual Purity crown the new E-Class Coupé as a design classic. A unique technology package crowns it as the Masterpiece of Intelligence.







## Makes gazes inescapable.

The uniquely slender roof line flows into the athletic tail end. This bestows a contemporary, breathtaking aesthetic appeal on the coupé. Let down the frameless windows in the doors and the rear side windows, open the optional panoramic sliding sunroof and experience driving more intensively than ever.





Mercedes-Benz

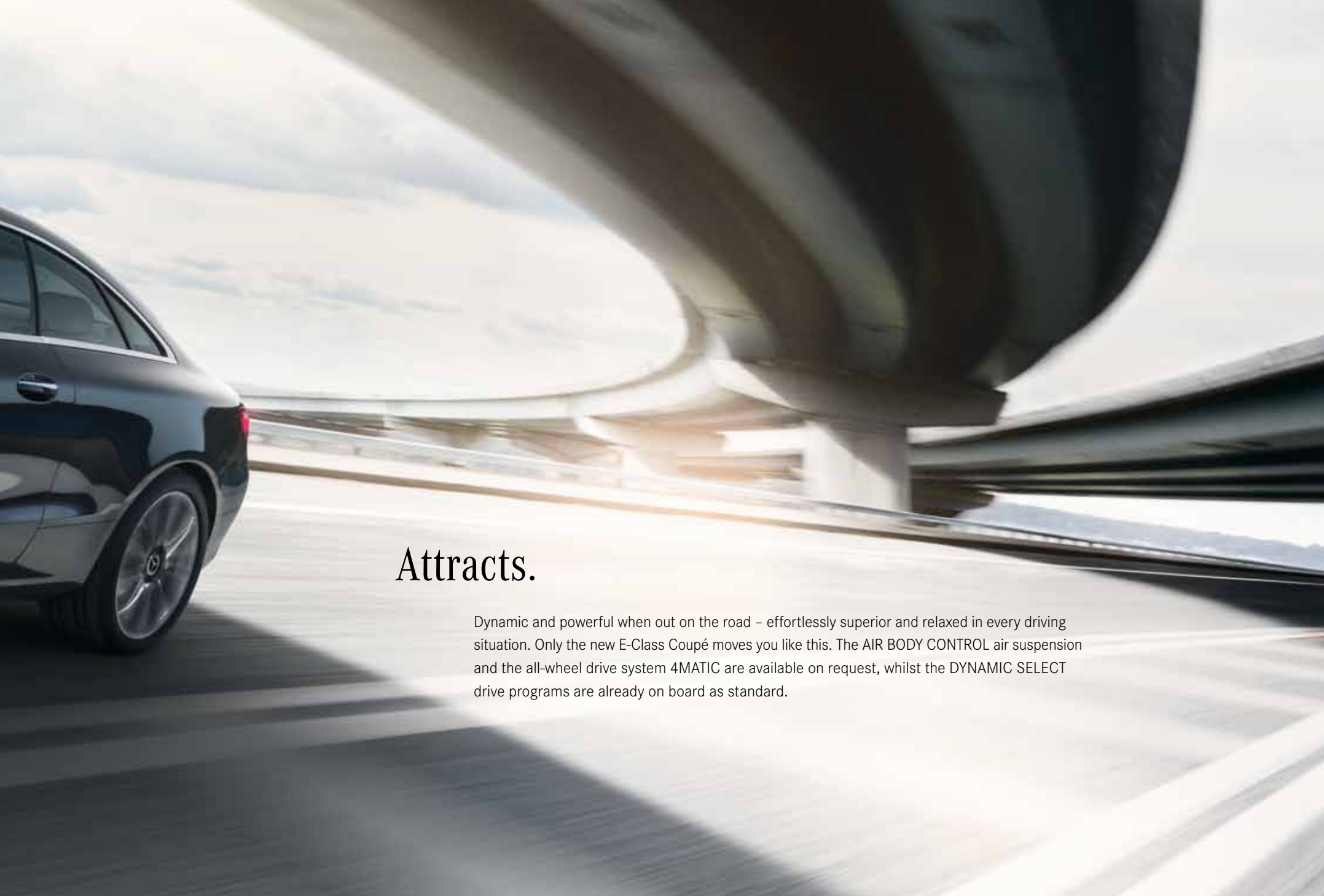




## Invitation to an exciting world.

In the tradition of exclusive gran turismos, on four seats the new E-Class offers every comfort and plenty of space for travelling. Immerse yourself in the contemporary luxury of Mercedes-Benz. The interior features an especially high-quality design, with a wrap-around effect ensuring a unique cosiness. The exciting highlight is the optional Widescreen Cockpit, comprising two 31.2 cm (12.3-inch) displays. It opens up a fascinating digital world for you.





## Attracts.

Dynamic and powerful when out on the road – effortlessly superior and relaxed in every driving situation. Only the new E-Class Coupé moves you like this. The AIR BODY CONTROL air suspension and the all-wheel drive system 4MATIC are available on request, whilst the DYNAMIC SELECT drive programs are already on board as standard.

A dark-colored car is shown from a side-rear perspective, driving on a road that curves along a body of water. The car is in motion, as indicated by the blurred background and the road surface. The scene is set during the day with a bright, slightly hazy sky. The car's sleek design and aerodynamic lines are emphasized by the lighting and the motion blur.

## Glides through the air.

The expressive coupé line and the powerful tail end are impressive, but not merely in visual terms: they are the embodiment of outstanding aerodynamics. They ensure better efficiency, optimum roadholding and the prevention of wind noise. With the optional DRIVE PILOT you glide to your destination even more elegantly, with support when accelerating, braking and steering – even in bends. A milestone on the way to autonomous, accident-free driving.





## E 400 4MATIC. Refined power.

245 kW (333 hp) and 480 Nm, six cylinders and two turbochargers facilitate a highly effortlessly superior driving experience. Via the DYNAMIC SELECT drive programs you can also influence the engine's response – from sportily direct to emphatically comfortable and efficient. The all-wheel drive system 4MATIC also ensures that the engine output is converted to power with virtually no losses – even in adverse road surface or weather conditions.



## Suspension and DYNAMIC SELECT. Sportiness and comfort become one.

The AIR BODY CONTROL suspension with its multi-chamber air suspension system is available on request. It works in unison with continuously variable damper control to ensure a very high standard of ride comfort and driving dynamics. The damping at each wheel is adapted to the current driving situation and the condition of the road surface. Via five DYNAMIC SELECT drive programs the AIR BODY CONTROL suspension – as well as the engine characteristics and the steering – can be adjusted to be more comfortable or sportier.



## COMAND Online. Well entertained – well informed.

The optional extra COMAND Online leaves virtually nothing to be desired in terms of infotainment, navigation and communication. Impressive: information is shown on a 31.2 cm (12.3-inch) high-resolution media display. And the hard-disc navigation guides you rapidly to your destination with the help of Live Traffic Information – real-time traffic information. Comprehensive smartphone connectivity also facilitates convenient access to lots of your personal data.

<sup>1</sup> Free of charge for three months; entire free duration of three years only available in conjunction with setting up a Mercedes me user account plus after agreeing to the general and special conditions of use.



## Burmester® sound system. Music to the ears for the road.

The optional high-end 3D surround sound system from Burmester®: 23 specially designed speakers, 25 amplifier channels with a system output of up to 1450 watts, as well as technologies developed exclusively for the car, ensure an extraordinarily expressive and thrilling 3D sound – the Burmester® “feel-good sound”.



## AVANTGARDE. Dynamically elegant.

The exterior looks timelessly contemporary right down to the last detail. It includes 43.2-centimetre light-alloy wheels, a diamond radiator grille with black pins and design elements in chrome and aluminium. The lowered AGILITY CONTROL suspension also emphasises the sporty look.

### EXTERIOR HIGHLIGHTS

---

Dynamic front bumper with chrome trim element and air intakes with a diamond lattice

---

Diamond radiator grille with black pins, chrome surround, integral Mercedes star and a characteristic coupé louvre

---

Beltline trim strip and window surround in polished aluminium

---

10-spoke 43.2 cm (17-inch) light-alloy wheels (large image); opt. e.g. 48.3 cm (19-inch) light-alloy wheels, painted tremolite grey with a high-sheen finish

---

Rear bumper with two integral exhaust tailpipe trims

---

AGILITY CONTROL suspension with selective damping system and lowered chassis

---

### INTERIOR HIGHLIGHTS

---

Coupé seats in an integral-seat look with horizontal quilting on the seat surfaces

---

Upholstery in ARTICO man-made leather/Norwich fabric in black

---

3-spoke multifunction steering wheel in black nappa leather, with Touch Control buttons and galvanised shift paddles

---

Light crystal-grain aluminium trim

---

Beltlines and door centre panels with soft finish in black

---





## AMG Line. Sportily expressive.

Hallmark AMG characteristics lend this design and equipment line extra sportiness and exclusivity. The interior impresses with the multifunction sports steering wheel, upholstery in ARTICO man-made leather/DINAMICA in black, AMG sports pedals, AMG floor mats and the ambient lighting. On the exterior, AMG light-alloy wheels plus the AMG bodystyling all round ensure a powerful, sporty look.

### EXTERIOR HIGHLIGHTS

---

AMG front apron with chrome trim element

---

AMG side sill panels

---

AMG rear apron in diffuser look with chrome trim

---

AMG 48.3 cm (19-inch) 5-twin-spoke light-alloy wheels, painted titanium grey with a high-sheen finish (small image); opt. e.g. AMG 50.8 cm (20-inch) multi-spoke light-alloy wheels

---

Diamond radiator grille with pins in chrome with Mercedes star and single louvre in matt iridium silver with chrome insert

---

Rear bumper with insert in black diffuser-look finish

---

### INTERIOR HIGHLIGHTS

---

Upholstery in ARTICO man-made leather/DINAMICA microfibre in black

---

3-spoke multifunction sports steering wheel, with flattened bottom section (only in conjunction with black-based interior combinations)

---

Dashboard upper section in ARTICO man-made leather in black with topstitching

---

Brushed stainless steel AMG sports pedals with black rubber studs

---

AMG floor mats in black with "AMG" lettering

---

Ambient lighting with 64 light colours

---

# Upholstery and trim.

---

## Upholstery

---

- 201 Leather, black, with horizontal quilting<sup>1, 2</sup>
- 204 Leather, saddle brown/black, with horizontal quilting<sup>1</sup>
- 205 Leather, macchiato beige/espresso brown, with horizontal quilting<sup>1</sup>
- 211 Leather, black, with cross quilting<sup>1</sup>
- 215 Leather, macchiato beige/yacht blue, with horizontal quilting<sup>1</sup>
- 297 Two-tone leather, classic red/black, with cross quilting<sup>1</sup>
- 301 ARTICO man-made leather/Norwich fabric, black, with cross quilting<sup>2, 3</sup>
- 601 ARTICO man-made leather/DINAMICA microfibre, black, with cross quilting<sup>4</sup>
- 801 Nappa leather, black, with horizontal quilting<sup>1, 2</sup>
- 805 Nappa leather, macchiato beige/espresso brown, with horizontal quilting<sup>1</sup>
- 811 Nappa leather, black, with cross quilting<sup>1</sup>
- 815 Nappa leather, macchiato beige/yacht blue, with horizontal quilting<sup>1</sup>
- 895 Two-tone nappa leather, deep white/black, with cross quilting<sup>1</sup>
- 897 Two-tone nappa leather, classic red/black, with cross quilting<sup>1</sup>
- 951 designo nappa leather, black/titanium grey pearl, with diamond quilting<sup>5</sup>
- 955 designo nappa leather, macchiato beige/tizian red, with diamond quilting<sup>5</sup>

---

## Trim elements

---

- H40 Light crystal-grain aluminum trim elements<sup>3, 4</sup>
  - H64 Metal-weave trim elements<sup>1</sup>
  - H01 High-gloss light brown sen wood trim elements<sup>1</sup>
  - H05 Light brown open-pore elm wood trim elements<sup>1, 6</sup>
  - H06 High-gloss brown ash wood trim elements<sup>1</sup>
  - 736 Black open-pore ash wood trim elements<sup>1, 7</sup>
  - H16 designo black flowing lines piano lacquer<sup>1</sup>
  - H26 designo brown flowing lines magnolia wood trim elements<sup>1</sup>
- 

<sup>1</sup> Optional extra. <sup>2</sup> Roof liner grey as standard. <sup>3</sup> Standard for AVANTGARDE interior. <sup>4</sup> Standard equipment for AMG Interior line. <sup>5</sup> Optional extra for AVANTGARDE and AMG Interior line. <sup>6</sup> Standard in conj. w. designo interior code 955. <sup>7</sup> Standard in conj. w. designo interior code 951.

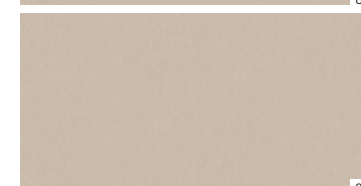
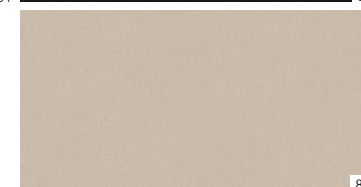
## AVANTGARDE

ARTICO man-made leather/

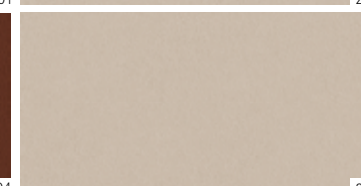
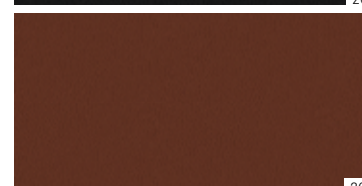
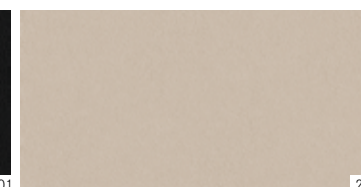
Norwich fabric



Nappa leather



Leather



ARTICO man-made leather/  
DINAMICA microfibre



Leather



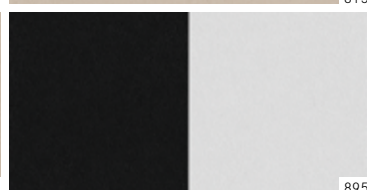
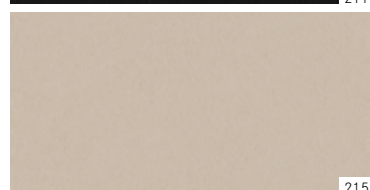
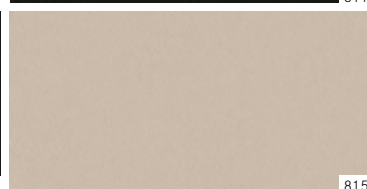
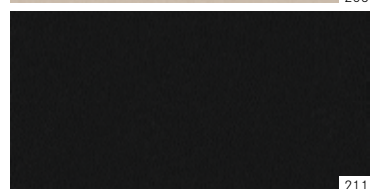
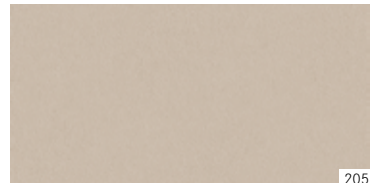
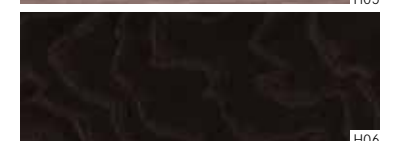
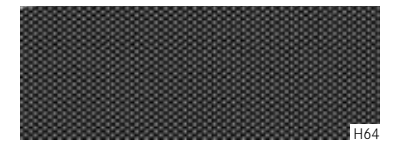
Nappa leather



designo



Trim elements

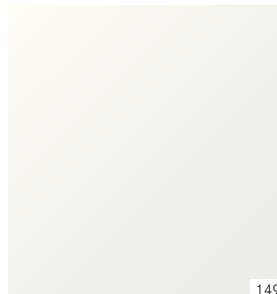


# Paintwork.

## Non-metallic paints



040



149

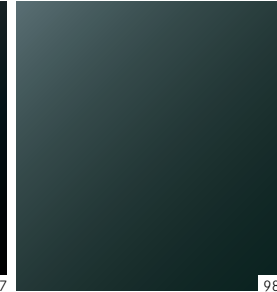
## Metallic paints<sup>1</sup>



197



296



989



992



775

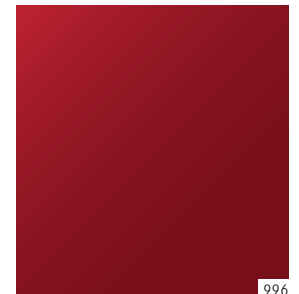


890

## designo paints<sup>1</sup>



799



996

---

### Non-metallic paints

---

040 black

149 polar white

---

### Metallic paints<sup>1</sup>

---

197 obsidian black

296 aragonite silver

775 iridium silver

890 cavansite blue

989 emerald green

992 selenite grey

---

### designo paints<sup>1</sup>

---

799 designo diamond white bright

996 designo hyacinth red metallic

---

<sup>1</sup> Optional extra.

Additional individual designo paint finishes are available from your Mercedes-Benz dealer.

# Technical data.

	Diesel engine	Petrol engines		
	E 220 d	E 200	E 300	E 400 4MATIC
Arrangement/no. of cylinders	4/in-line	4/in-line	4/in-line	V6
Displacement (cc)	1950	1991	1991	2996
Rated output <sup>1</sup> (kW) at rpm	143 (194)/3800	135 (184)/5500	180 (245)/5500	245 (333)/5250-6000
Rated torque (Nm) at rpm	400/1600-2800	300/1200-4000	370/1400-4000	480/1600-4000
Transmission	9G-TRONIC	9G-TRONIC	9G-TRONIC	9G-TRONIC
Acceleration 0-100 km (s)	7.4	7.8	6.4	5.3
Top speed (km/h)	242	240	250 <sup>2</sup>	250 <sup>2</sup>
Tyres/wheels front	225/55 R 17	225/55 R 17	225/55 R 17	245/45 R 18
Tyres/wheels rear	225/55 R 17	225/55 R 17	225/55 R 17	245/45 R 18
Fuel	Diesel fuel	Premium-grade petrol	Premium plus grade petrol	Premium-grade petrol
Fuel consumption <sup>3</sup> /(l/100 km)				
Urban	5.1-4.5	8.4-7.9	8.9-8.4	11.2-11.0
Extra-urban	4.2-3.7	5.7-5.0	5.9-5.3	6.7-6.4
Combined	4.6-4.0	6.7-6.0	7.0-6.4	8.4-8.1
CO <sub>2</sub> emissions <sup>3</sup> combined (g/km)	119-106	151-136	160-147	189-183
Emission class <sup>4</sup> /efficiency class <sup>5</sup>	Euro 6/A+	Euro 6/B	Euro 6/B	Euro 6/D
Tank capacity/of which reserve (l)	50/7.0	50/7.0	66/7.0	66/7.0
Boot capacity <sup>6</sup> (VDA) (l)	425	425	425	425
Kerb weight <sup>7</sup> /payload (kg)	1735/565	1655/535	1685/545	1845/515
Perm. GVW (kg)	2300	2190	2230	2360

**The best for the engine:**  
Mercedes-Benz genuine engine oils.

<sup>1</sup> Information on rated output and rated torque in accordance with Directive (EC) No. 595/2009 in the currently applicable version. <sup>2</sup> Electronically governed. <sup>3</sup> The figures shown for fuel consumption and CO<sub>2</sub> emissions were obtained in accordance with the prescribed measuring process (§2 Nos. 5, 6, 6a Pkw-ENVKV (German Ordinance on Fuel Consumption Labelling) in the currently applicable version). The figures are not based on an individual vehicle and do not constitute part of the product offer; they are provided solely for purposes of comparison between different vehicle models. <sup>4</sup> Data applicable within the European Union only. Country-specific variations possible. <sup>5</sup> Determined on the basis of the measured CO<sub>2</sub> emissions, taking into account the mass of the vehicle. Only valid for the Federal Republic of Germany. <sup>6</sup> Data in accordance with Directive 2007/46/EC in the currently applicable version. <sup>7</sup> Figures for kerb weight in accordance with Directive 92/21/EC in the currently applicable version (kerb weight with fuel tank 90% full, with driver, 68 kg, and luggage, 7 kg) for standard-specification vehicles. Optional extras and accessories will generally increase this figure and reduce the payload capacity accordingly. You can find further technical data at [www.mercedes-benz.com](http://www.mercedes-benz.com)



**Mercedes-Benz is one of the founding partners of the “Laureus Sport for Good Foundation”.**

Since the foundation was established in 2000, Mercedes-Benz has been supporting and promoting the aims and values of this worldwide non-profit-making programme: to use social sports projects to improve the lives of children and young people who are disadvantaged or suffering from illness. Laureus has become a fundamental element of Mercedes-Benz’s social responsibility. Every new Mercedes is an ambassador embodying these values. In buying a Mercedes you are supporting the “Laureus Sport for Good Foundation”.

**Please note:** changes may have been made to the product since this brochure went to press (17.08.2016). The manufacturer reserves the right to make changes to the design, form, colour and specification during the delivery period, provided these changes, while taking into account the interests of the vendor, can be deemed reasonable with respect to the purchaser. Where the vendor or the manufacturer uses symbols or numbers to describe an order or the subject of an order, no rights may be derived solely from these. The illustrations may show accessories and optional extras which are not part of standard specification. Colours may differ slightly from those shown in the brochure, owing to the limitations of the printing process. This brochure is distributed internationally. Information given regarding statutory regulations, legal requirements and taxation and the consequences thereof applies to the Federal Republic of Germany only and is correct at the time of going to press. For current and more specific information in relation to the range of models, features, optional extras, colours and/or services available in your country, and their pricing, you should contact your nearest authorised Mercedes-Benz Passenger Car Dealer.

[www.mercedes-benz.com](http://www.mercedes-benz.com)

Daimler AG, Mercedesstr. 137, 70327 Stuttgart MS/MAC 6701 · 0419 · 02-00/1216

**Take-back of end-of-life vehicles.** At the end of its long life, you can return your E-Class Coupé to us for environment-friendly disposal in accordance with the European Union (EU) End-Of-Life Vehicle Directive. But that day lies a long way off.

A network of vehicle take-back depots and dismantlers has been established to make it as easy as possible for you to return your vehicle. You can leave it at any of these points free of charge and, by doing so, make an important contribution to completing the recycling process and conserving resources.

For further information about the recycling and disposal of end-of-life vehicles and take-back conditions, please visit your national Mercedes-Benz website.