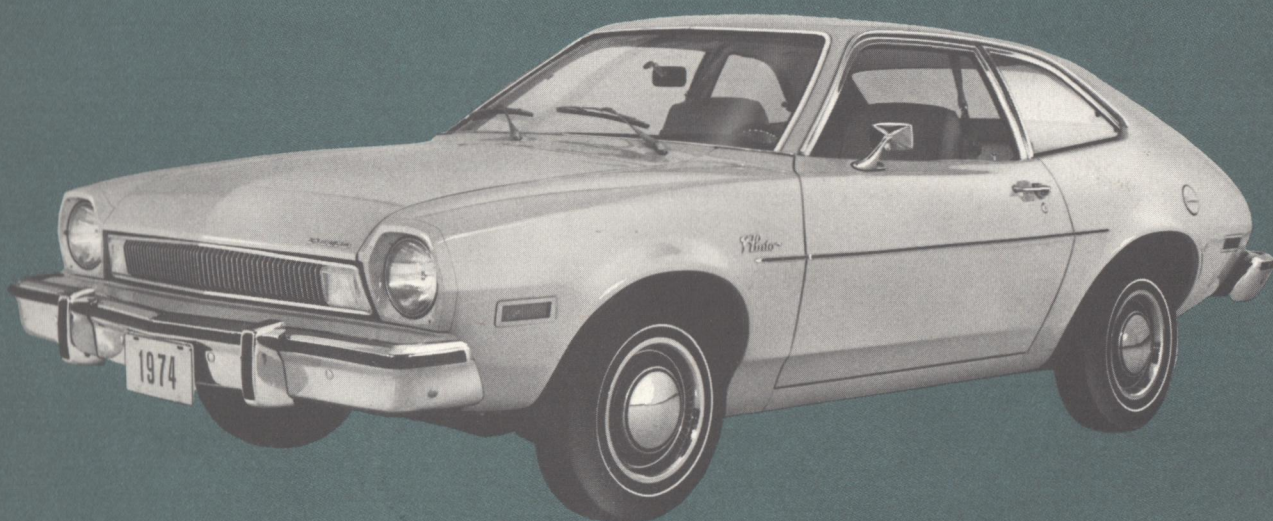


1974 PINTO

Competitive Comparisons

FEATURES... PRICES... SPECIFICATIONS



 **Pinto** vs.



Chevrolet Vega

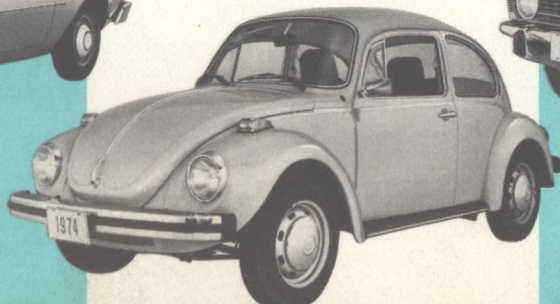


Datsun 210



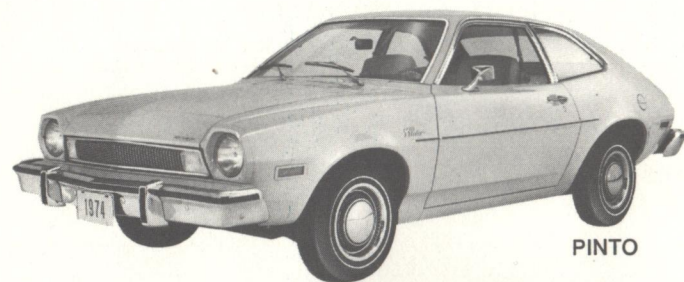
AMC Gremlin

Volkswagen Super Beetle



Toyota Corolla 1600

FORD PINTO vs. CHEVROLET VEGA

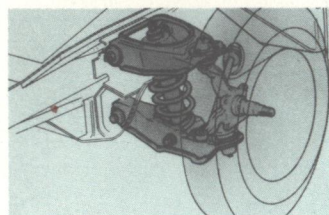


PINTO

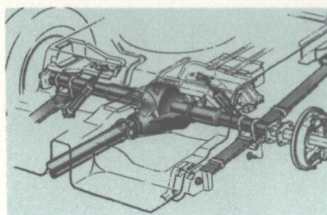


VEGA

Sales figures show Pinto in 1973 was the best selling compact in America's rapidly expanding small-car market. Pinto—tough, durable and dependable—is improved for 1974 in such basics as suspension, ride and handling. And it retains its dimensions as a *true* subcompact.



FRONT SUSPENSION



REAR SUSPENSION

For 1974, the short and long arm components of Pinto's front suspension are redesigned for added strength. Thick rubber bushings help isolate road disturbances, and springs are recalibrated to help give Pinto a soft ride unexpected in a car of its size. Vega for 1974 continues its front coil spring suspension.

Pinto's rear suspension also features thick rubber bushings at the leaf-spring chassis connection points to help minimize noise transfer to the passenger compartment. Vega's rear suspension is again the coil-spring type.



PINTO

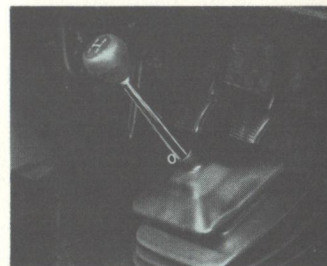


VEGA

The Pinto Runabout has 35% more usable cargo space than the Vega Hatchback. Packages, including large grocery bags, are safely placed at the very rear of Pinto's cargo compartment. Such packages must be loaded far forward in the Vega. And the Pinto Runabout features a cut-pile carpeting snapped solidly into the cargo area, while the Vega carpet-mat-type floor cover is unsecured and slips easily.



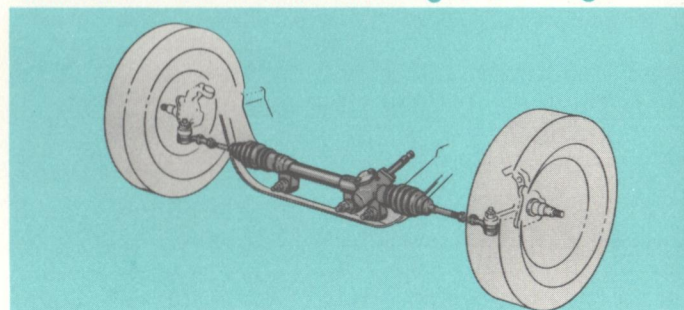
PINTO



VEGA

Pinto's standard transmission is a four-speed manual shift with internal shift linkage that remains clean and protected from road hazards. The standard Vega transmission is a three-speed, with a four-speed available as a \$53 extra-cost option. And Pinto's sturdy four-speed offers performance advantages over Vega's three-speed. A four-speed transmission is more capable than a three-speed at keeping engine revolutions within an effective performance range.

Additional Pinto feature advantages over Vega.



RACK AND PINION STEERING

Steering. Pinto features the rack-and-pinion type steering found on many European cars to provide precise control and response. Vega utilizes the conventional recirculating ball-type steering system.

Optional Engine. Pinto offers a 2300 cc engine as an option. Vega's optional engine is a 2-barrel carburetor version of its standard 140 cubic inch (2300 cc) engine.

Interior Luxury. Pinto provides such interior luxury touches as padded vinyl door trim. Door trim on the Vega is vinyl applied directly over metal. And Vega's standard front bucket seats are not in the comfortable horseshoe bolster design of Pinto's standard front bucket seats.

VEGA ENGINE AVAILABILITY

STD. Engine	OPT. Engine
140 CID 1V (2300 cc)	140 CID 2V (2300 cc)

See Page 9 for Performance Specifications & Comparison.

1974 VEGA STANDARD FEATURES

Exterior

- Side marker lights and reflectors
- Backup lights
- Bolt-on Front Fenders
- Unitized body construction
- Hub caps
- Acrylic lacquer finish

Interior

- Vinyl or cloth, molded foam bucket seats
- Rubber floor mat in Hatchback
- Power ventilation system
- Safety armrests
- Wide-view Inside Mirror
- Glove Box
- Mini-console only with optional transmission
- Vinyl door trim over metal

Functional

- 3-Spd. Manual Transmission
- Front disc and rear drum brakes
- Recirculating ball steering system
- Front/Rear coil-spring suspension
- 2-Spd. Windshield Wipers/Washers
- A78 x 13 BSW Tires
- Passenger-guard door locks
- Delcotron generator

POPULAR VEGA OPTIONS

	Price*
140 CID 2V engine	\$ 41.00
4-speed Transmission	\$ 53.00
Turbo Hydra-matic Transmission	\$199.00
Air Conditioning	\$362.00
Front Bumper Guards	\$ 12.00
Front/Rear Floor Mats	\$ 12.00
AM Radio	\$ 58.75
AM-FM Radio	\$119.50
Tinted Glass	\$ 37.00
BR70 x 13 White Stripe Steel-Belted Tires	\$154.60

*Manufacturer's suggested retail price as of December 13, 1973.

1974 CHEVROLET VEGA DIMENSIONS

EXTERIOR	Notchback	Hatchback
Wheelbase	97.0"	97.0"
Length (Overall)	175.4	175.4
Width (Overall)	65.4	65.4
Height (Loaded)	51.9	50.0
Tread—Front	55.2	55.2
—Rear	54.1	54.1
INTERIOR		
Head Room—Front	38.3"	37.6"
—Rear	37.4	36.6
Hip Room—Front	42.4	49.4
—Rear	42.5	42.5
Shoulder Room—Front	51.6	51.6
—Rear	49.5	49.5
Luggage Capacity, Effective	8.7 cu. ft.	9.3 cu. ft.**

**18.9 cu. ft. cargo area with rear seat folded down.

1974 TOYOTA COROLLA 1600 STANDARD FEATURES

Exterior

- Backup lights
- Uni-body construction
- Deluxe wheel covers
- Tinted glass

Interior

- Vinyl Reclining Front Bucket seats
- Snap-out carpeting
- Flo-Thru Ventilation
- Padded armrests
- Rearview mirror
- Glove box
- Deluxe door panels

Functional

- 4-spd. Manual Transmission
- Power front disc/rear drum brakes
- Recirculating ball steering
- Front coil rear leaf-spring suspension
- 2-spd. electric wipers and windshield washers
- 6.15 x 13 WSW tires

PINTO VS. TOYOTA COROLLA 1600

The Toyota Corolla 1600 series includes two two-door models—a coupe and sedan—and a four-door sedan. All are essentially Corolla 1200's, but with a 1600 cc engine and minor refinements. And all three models represent smaller packages than Pinto, shorter in length and wheelbase, and with narrower front and rear tread.

Pinto's standard 2000 cc engine is larger than the Corolla 1600. In addition, while Pinto offers an optional 2300 cc engine, Corolla offers *only* the standard 1600 cc power.

Other significant Pinto sales advantages over Corolla 1600

Pinto offers larger interior dimensions. For example, 5.6 inches more rear seat shoulder room, almost 3 inches more front seat shoulder room, and 1.6 inches more front leg room.



TOYOTA

Toyota Corolla Options	Price*
Automatic Transmission	\$200
Air Conditioning	\$350
AM Radio	\$ 78
AM-FM Stereo Radio	\$239
8-Track Stereo Tape	\$235

*Manufacturer's suggested retail price as of Oct. 1, 1973.

Pinto Comfort, Convenience, Heavy-Duty Equipment Availability

Included among Pinto's 39 options:

- Three Radios:
 - AM, AM/FM Monaural and AM/FM Stereo
- Sunroof
- Luxury Decor Group
- Handling Suspension
- Protection Group
- Forged Aluminum Wheels
- Sports Accent Group
- Hub caps w/trim rings
- Vinyl Roof
- Vinyl insert bodyside moldings
- Trailer-towing Package
- Steel-belted radial ply tires

Corolla 1600 Dimensions

	2-Dr., 4-Dr. Sedan and 2-Dr. Coupe
--	------------------------------------

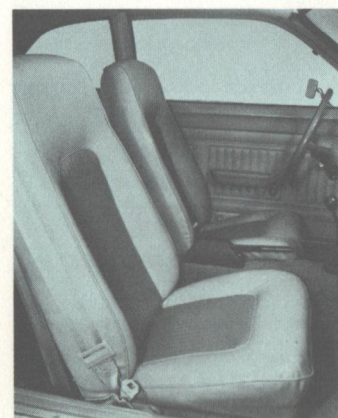
Exterior	
Wheelbase	91.9"
Length (Overall)	159.4
Width (Overall)	59.3
Height	54.1*
Tread—Front	49.6
—Rear	49.6

Interior	
Head Room—Front	37.6"
—Rear	36.6
Leg Room—Front	39.2
—Rear	31.7
Shoulder Room—Front	49.6
—Rear	49.0

COROLLA 1600 ENGINE AVAILABILITY

Std. Engine	Opt. Engine
1600 cc 4-cyl.	NA

*53.0" on 2-dr. coupe



PINTO



TOYOTA

Corolla interiors are not color-keyed. Pinto offers color-keyed, all-vinyl door trim with heavy padding, and Pinto's instrument panel features two round cluster pods directly in front of the driver, with bright accents around the pods, heater control bezel and vent registers.

In addition, Pinto can be ordered with a wide selection of optional equipment, giving the subcompact buyer a choice not available on Corolla 1600 which offers only five option choices against Pinto's thirty-nine.

Pinto vs. Corolla 1600 Price Comparison

The Pinto two-door with suggested list of \$2442 is **only \$13 more** than the Corolla two-door Sedan at \$2429 . . . and **\$87 under** the Corolla 1600 two-door Coupe with a \$2529 list.

*Manufacturers' suggested retail prices: Toyota as of October 1, 1973; Pinto as of December 11, 1973.

1974 DATSUN 210 STANDARD FEATURES

Exterior

- Backup lights
- Uni-body construction
- Wheel covers
- Tinted glass
- Parking lamps

Interior

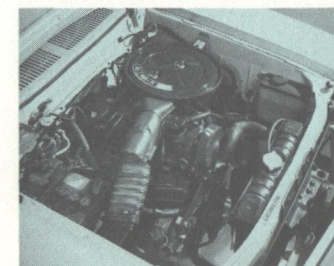
- Vinyl reclining bucket seats
- Flow-Through Ventilation
- Front armrest
- Rearview mirror
- Glove box
- Console box
- Plastic steering wheel

Functional

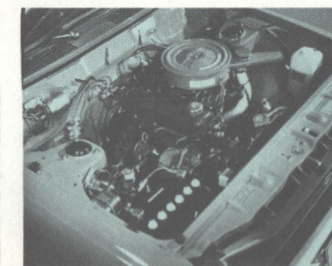
- 4-spd. manual transmission
- Power front disc/rear drum brakes
- Recirculating ball steering
- Front coil/rear leaf-spring suspension
- 2-spd. electric wipers/washers
- 6.15 x 13 WSW tires
- 50-amp. alternator

PINTO VS. DATSUN B-210

A new Datsun product for 1974, the B-210 replaces the discontinued 510. Three body styles are offered. Two-door and four-door sedans and a three-door Hatchback. When you compare this new Datsun B-210 with Pinto, feature for feature—in size, interior roominess, options availability and power—you'll find Pinto's value a standout.

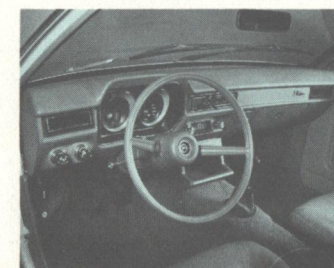


PINTO

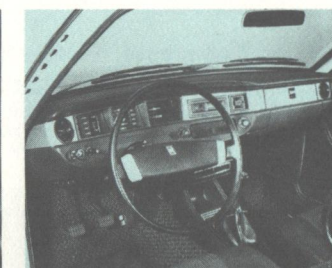


DATSUN

Datsun 210 offers a 1288 cc engine standard, as against Pinto's 2000 cc. While Pinto provides an optional 2300 cc engine, the standard Datsun 1288 is the only power available. Datsun 210 does not provide rack-and-pinion steering as does Pinto, but rather the conventional recirculating ball-type steering gear.



PINTO



DATSUN

Make a personal comparison of Pinto's bright-accent instrument panel and its interior appointments with the Datsun 210.

Pinto plus advantages over Datsun 210

- **5-Inch Wider Stance.** In both front and rear tread Pinto offers a near five-inch wider stance than Datsun 210. Pinto treads are 55 inches wide for excellent handling ability.
- **Engine.** The Pinto standard engine is 2000 cc with a 2300 cc engine available. Datsun 210 offers *only* its standard 1288 cc engine.
- **Steering.** Pinto's rack-and-pinion steering delivers excellent response and precise control.
- **Options.** Customers can tailor Pinto to please, personalizing from a wide choice of thirty-nine options, factory-installed. Datsun offers just one factory-installed option. Others are dealer installed.



DATSUN

Datsun 210 Options Availability	Price*
Automatic 3-Speed Transmission	\$220
Air Conditioning	\$385
AM-FM Stereo Radio	\$199
Mag Wheels	\$195

Datsun 210 Dimensions

Exterior	2-Dr., 4-Dr. and Hatchback
Wheelbase	92.1"
Length (Overall)	160.6
Width (Overall)	60.8
Height	53.9*
Tread—Front	50.2
—Rear	49.8

*53.1" on Hatchback

Datsun 210 Engine Availability

Std. Engine	Opt. Engine
1288 cc 4-cyl.	NA

See page 9 for Performance Specifications Comparison.

Pinto vs. Datsun 210 Price Comparison

The Pinto Runabout is priced **\$27 under** the Datsun 210 Hatchback price of \$2595,* while the Pinto 2-door is **\$53 less** than the Datsun 210 4-door price of \$2495. The Pinto 2-door, priced only \$47 over the Datsun 2-dr. Sedan offers such advantages as a larger engine and rack-and-pinion steering.

*Manufacturers' suggested retail prices: Datsun as of December 26, 1973; Pinto as of December 11, 1973.

1974 VW SUPER BEETLE STANDARD FEATURES

Exterior

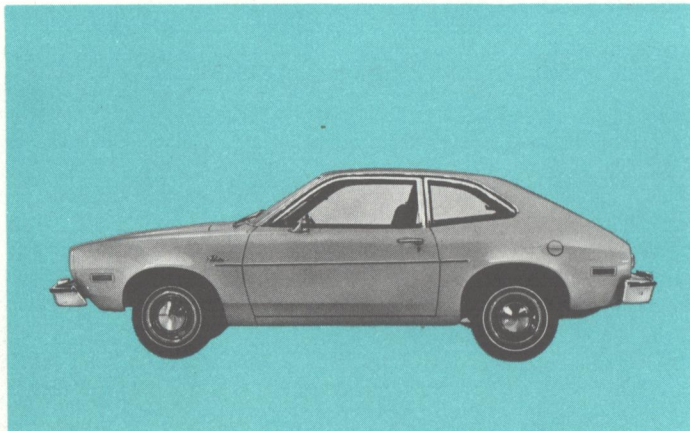
- Backup lights
- Uni-body construction
- Bright hubcaps
- Curved windshield

Interior

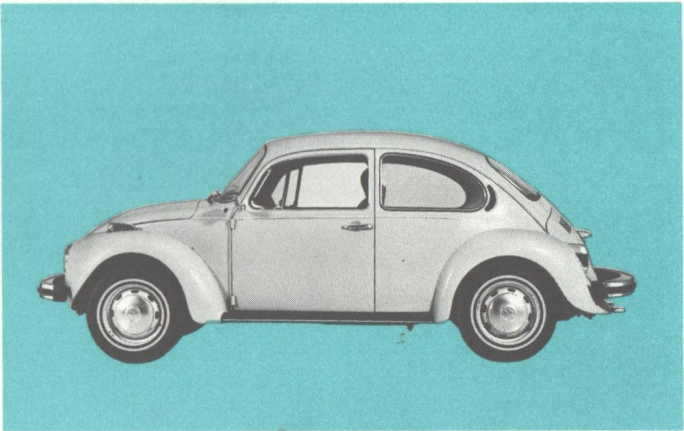
- Vinyl bucket seats
- Hot-cold air-mix ventilation
- Padded instrument panel
- Rearview mirror
- Glove box
- Floor-mount shift lever
- Vinyl door panels

Functional

- 4-spd. Manual Transmission
- Front disc and rear drum brakes
- Recirculating ball steering
- Independent rear suspension
- Rear window defogger
- Concealed brake lines
- Dual exhausts
- Tires, 600x15 WSW



PINTO



SUPER BEETLE

In 1973, having passed Volkswagen in sales, Pinto rated as the best-selling subcompact in America. One reason is very likely Pinto's dollar-for-dollar value when its price is compared to the \$407 *higher* price of the VW Super Beetle. Others must include Pinto's lower-profile styling and luxury look as compared to the rather austere appointments in the VW.

Super Beetle stands about nine inches higher than Pinto. Pinto has a wider track, both front and rear, and a lower center of gravity than Super Beetle. Pinto also enjoys excellent handling characteristics with its precise rack-and-pinion steering, front coil and rear leaf suspension systems. VW has recirculating ball-and-roller steering and coil springs both front and rear.

Super Beetle Options Availability

Automatic stick-shift transmission\$200*
Air conditioning and AM-FM radio available as dealer installed options, prices not published.

Super Beetle Dimensions

Exterior

Wheelbase	95.3"
Length (Overall)	163.0
Width (Overall)	62.4
Height (unloaded)	59.1
Tread—Front	54.6
—Rear	53.6

Interior

Head Room—Front	38.9"
—Rear	35.8
Leg Room—Front	39.3
—Rear	30.7
Shoulder Room—Front	46.2
—Rear	48.6

Super Beetle Engine Availability

Std. Engine	Opt. Engine
96.66 CID 4-cyl. (1585 cc)	NA

Additional Pinto Selling Advantages over Super Beetle

Interior Roominess. Pinto offers roomier seating for four passengers. 1.7 inches more front leg room, 6.3 inches more front shoulder room and 3 inches more rear shoulder room than the Super Beetle.

Larger, More Convenient Engine Compartment. Servicing Pinto, including making battery checks, is easier than servicing the Super Beetle. Pinto's engine compartment is larger and VW's battery is under the rear seat, making routine battery checks difficult.

Pinto Offers Truly Automatic Transmission. Pinto's optional SelectShift Transmission is *really* automatic. The VW "automatic transmission" requires manual shifting of the gears, and is automatic only in its elimination of the clutch.

Pinto vs. Super Beetle Price Comparison

Pinto plus-value over the Volkswagen Super Beetle is evident when its \$2442* suggested list for the two-door is compared with Super Beetle's \$2849* price — **\$407 more than Pinto.**

*Manufacturers' suggested retail prices: Super Beetle as of December 1973; Pinto as of December 11, 1973.

PINTO VS. COMPETITION STANDARD PERFORMANCE SPECIFICATIONS

	Engine	CID	Bore	Stroke	Carburetor	Fuel
Pinto	OHC 2000 cc 4-cyl.	122	3.575"	3.029"	2V	Reg.
Vega	OHC 4-cyl.	140	3.501"	3.625"	1V	Reg.
Corolla 1600	OHV 1600 cc 4-cyl.	96.9	3.78"	3.126"	2V	Reg.
Datsun 210	OHV 1288 cc 4-cyl.	78.5	2.87"	3.03"	2V	Reg.
Super Beetle	4-cyl.	96.66	3.37"	2.72"	2V	Reg.
Gremlin	6-cyl.	232	3.75"	3.50"	1V	Reg.

Optional Engine Availability						
Pinto	2300 cc 4-cyl.	140	3.78"	3.126"	2V	Reg.
Vega	OHC 4-cyl.	140	3.501"	3.625"	2V	Reg.
Gremlin	6-cyl.	258	3.75"	3.90"	1V	Reg.
	8-cyl.	304	3.75"	3.44"	2V	Reg.

NOTE: Corolla 1600, Datsun 210 and Super Beetle offer no optional engines.

Pinto . . . the economy of a true subcompact *plus* styling and luxury-car appeal.

Pinto is designed and engineered to fit the demands of the subcompact buyer. It seats four comfortably. It is easy on gas, economical to maintain and a value for the money.

But Pinto does more than provide economical transportation. It has a low, appealing-to-the-eye profile. It offers comfort and luxury touches, and opportunity for the buyer to personalize his Pinto through a broad range of options.

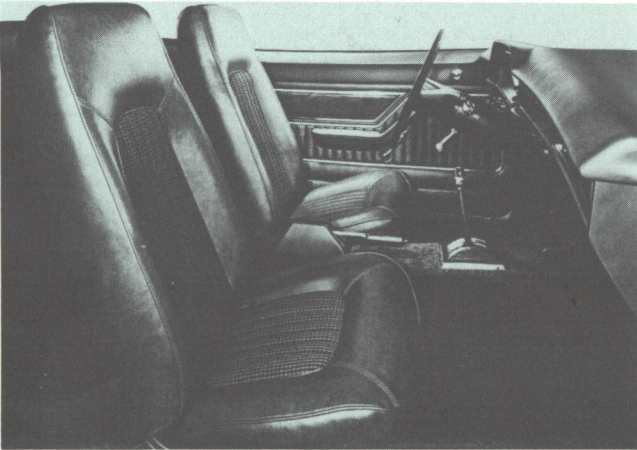
The Luxury Decor Group is but one example, adding inside and outside tasteful refinements:

Inside:

- Choice of deluxe cloth or pleated vinyl seat trim
- Deluxe door trim panels
- Cut-pile carpeting
- Deluxe two-spoke steering wheel
- Multi-directional vent registers
- Passenger side courtesy light door switches
- Front cigar lighter
- Rear seat ash tray
- Instrument panel and quarter trim panel with wood-grain appliques
- Bright parking brake with woodgrain grip and color-keyed boot
- Shift lever with woodgrain accents
- Deluxe seat and shoulder belts

Outside:

- Wheel covers
- Bodyside protection molding with vinyl insert
- Wheel lip moldings
- Rocker panel moldings
- Bright door and quarter window frames, "B" pillar cap, drip and belt moldings, and lower back panel periphery moldings.



1974 GREMLIN STANDARD FEATURES

Exterior

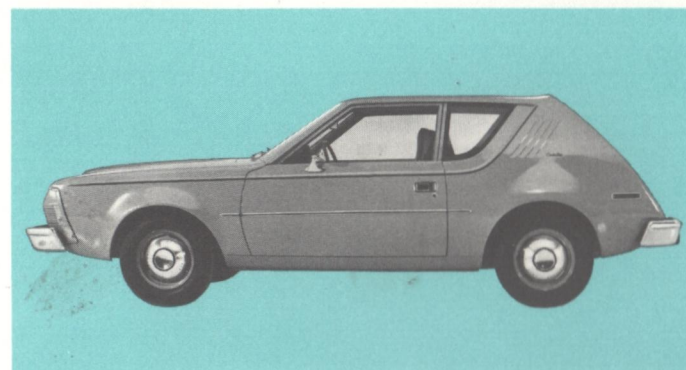
- Side marker lights and reflectors
- Backup lights
- Color-keyed grille
- Uni-body construction
- Corporate hub caps

Interior

- Vinyl bench seats
- Floor mat in Hatchback
- Weather-eye Ventilation
- Front armrest
- Inside rearview mirror
- Glove box
- Vinyl door panels

Functional

- 3-spd. manual transmission
- Drum brakes
- Ball-and-roller steering
- Front and rear coil-spring suspension
- 2-spd. electric wipers with windshield washers
- 37-ampere alternator
- 6.45 x 14 BSW tires



GREMLIN

With a longer wheelbase than Pinto, but shorter in overall length, the Gremlin is actually an abruptly shortened compact, rather than a true *subcompact*. As AMC's entry in the subcompact market, it is heavier than the average subcompact, nearly three hundred pounds heavier than Pinto.



PINTO



GREMLIN

Pinto Runabout offers 43% more usable cargo volume than Gremlin. (29.0 cubic feet against Gremlin's 16.7 cubic feet with its rear seat down and with Space-Saver tire.) And the Pinto Runabout's 3rd door, with its appreciably larger glass area is correspondingly larger for easy access. Gremlin has a small rear window and proportionately smaller door as access to the rear compartment. In addition, Pinto's lower lift-over rear end height and the angle of its load opening permits easy loading, as in a trunk.

Other Pinto selling advantages over Gremlin

- Pinto's standard transmission is a four-speed. Gremlin has a three-speed, and does not offer a four-speed.
- Pinto offers subcompact buyers a model choice: two-door Sedan, three-door Runabout and two-door Station Wagon. Gremlin and Gremlin X are the same two-door model with a rear window opening into the cargo area.
- Floor covering in the Pinto cargo area is snapped-in cut-pile carpet. Gremlin has a rubber floor mat in both passenger compartment and cargo area.
- Pinto has rack-and-pinion steering. Gremlin does not.

As a true subcompact, Pinto standard *and* optional engines are economical four-cylinder power plants. Gremlin has a 232 cubic inch six-cylinder as standard, with a 258 CID six and 304 CID eight as optional.

The Gremlin standard interior lacks comfort features found in Pinto, such as horseshoe bolster design seats.

Gremlin Options Availability

	Price*
Automatic Transmission (6-cyl. engine) ..	\$239.95
Electric Rear Window Defogger	\$ 45.35
AM Radio	\$ 66.20
AM/FM Stereo Radio	\$179.00
Air Conditioning	\$399.95
258 CID 6-cyl. engine	\$ 51.00
Power Brakes	\$ 44.35
Power Steering	\$109.95
"Levis" Custom Trim Package	\$164.90
Gremlin "X" Package	\$344.40

Gremlin Dimensions

Exterior	2-Door Sedan
Wheelbase	96.0"
Length (Overall)	170.3
Width (Overall)	70.6
Height	52.3
Tread—Front	38.4
—Rear	35.9
Interior	
Head Room—Front	38.0"
—Rear	36.4
Hip Room—Front	54.9
—Rear	53.0
Shoulder Room—Front	54.9
—Rear	53.0
Luggage Capacity, Effective	6.4 cu. ft.**

**16.7 cu. ft. with rear seat down and space-saver spare

Gremlin Engine Availability

Std. Engine	Opt. Engines
232 CID 6-cyl. (3800 cc)	258 CID 6-cyl. (4200 cc)
	304 CID 8-cyl. (4990 cc)
See page 9 for Performance Specifications Comparison	

Pinto vs. Gremlin Price Comparison

The suggested list for the base Gremlin two-door is \$2309.* The Gremlin "X", featuring the opening rear window, is priced at \$2653.40* which is **\$85.40 higher** than the Pinto Runabout suggested list price.

*Manufacturers' suggested retail prices: Gremlin as of December 21, 1973; Pinto as of December 11, 1973.

1974 PINTO STANDARD FEATURES

Exterior

- Side marker lights
- Backup lights integrated with taillights
- One-piece, corrosion-resistant grille
- Unitized body construction
- Bright metal hubcaps
- Acrylic enamel finish

Interior

- High-back, contoured, all-vinyl front bucket seats
- Carpeting in Runabout
- Direct-Aire Ventilation
- Molded upswept armrests
- Wide-view inside mirror
- Glove box
- Mini console under instrument panel
- Color-keyed, all-vinyl door trim with heavy padding
- Adjustable front passenger seat

Functional

- 4-speed, floor-mount manual transmission
- Self-adjusting front disc and rear drum brakes
- Precision rack-and-pinion steering
- Independent front coil and rear leaf-spring suspension
- Bear-hug door latches
- 6.00 x 13 BSW Tires
- 38-ampere alternator
- Free-flow aluminized muffler
- Keyless door locking with reversible key
- 2-spd. electric windshield wipers with washers

1974 PINTO PRICES*

2-Door Sedan	\$2442
3-Door Runabout	\$2568

1974 PINTO DIMENSIONS

Exterior

Wheelbase	94.2"
Length (Overall)	169.0
Width (Overall)	69.4
Height	50.3
Tread—Front	55.0
—Rear	55.8

Interior

Head Room—Front	37.3"
—Rear	36.2
Hip Room—Front	51.8
—Rear	41.6
Shoulder Room—Front	52.5
—Rear	51.0
Leg Room—Front	40.8
—Rear	30.7
Luggage Capacity, Effective	6.3 cu. ft.†

†In Pinto Runabout with rear seat down total cargo volume 29.0 cu. ft.

POPULAR PINTO OPTIONS

Following are a few of the 39 popular options and their prices available for Pinto. For details on these and other Pinto options, check pages 9-10 and your Product Facts Book.

	Price*		Price*
2300 cc Engine	\$ 52.	Sports Accent Group	\$428.
SelectShift Transmission ..	\$212.	Accent Group	\$ 94.
Air Conditioning	\$383.	Luxury Decor Group	
AM Radio	\$ 61.	2-Door	\$208.
AM/FM Stereo Radio	\$222.	Runabout	\$192.
Vinyl Roof	\$ 83.	WSW Steel-Belted	
Manual Sunroof	\$149.	Radial Tires	\$131.
		Tinted Glass	\$ 37.

PINTO ENGINE AVAILABILITY

Std. Engine
2000 cc 4-cyl.

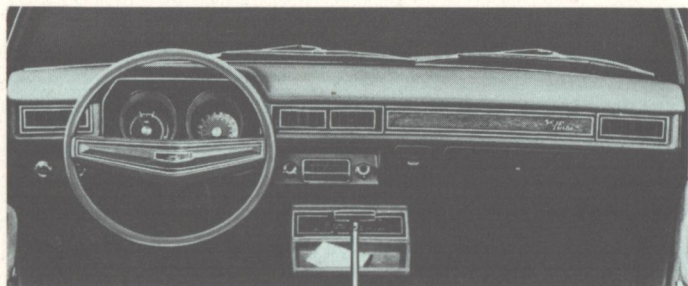
Opt. Engine
2300 cc 4-cyl.

*Manufacturer's suggested retail prices as of December 11, 1973.

PINTO PERSONALIZERS ARE MANY AND VARIED

SelectAire air conditioning, integrated into the instrument panel and heating system, provides year-round passenger comfort with cooled air delivered through multi-directional high-level registers and at floor level. Controls also permit delivery of heated air through defroster ducts and at floor level, as well as through high-level registers.

AM/FM Stereo Radio, includes two speakers designed to reproduce stereophonic sound, five pushbuttons to select five AM and five FM stations, plus controls for manual tuning, volume, tone and side-to-side balance. AM and AM/FM Monaural radios also available.



Flipper Rear Quarter Windows. Easy to open and close, rattle-resistant, positive-locking and tight-sealing. Bright moldings frame their simple, functional design.



Rear Window Electric Defroster eliminates need for scrapers. Frost and ice melt away at the flip of a switch. Option includes tinted glass.



Sunroof. Manually operated, sliding steel panel opens and closes with a turn of a handle. Designed for two-door and Runabout.

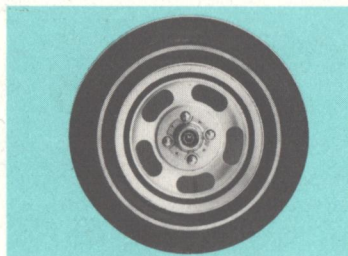
Vinyl Roof. Available in black, brown, white and avocado for two-door or Runabout. In addition, orange and yellow are also available with the Sports Accent Group.

SelectShift Cruise-O-Matic Transmission. Floor-mounted transmission that permits manual or automatic shifting with three forward speeds.



Forged Aluminum Wheels. Add a sporty, racy flair and performance look.

Steel-belted Radial Tires. Give extra thousands of driving miles and increased driving stability. Available in black or white sidewalls.



Accent Group

Smart, bright luxury touches for the Pinto exterior includes:

- Vinyl insert bodyside moldings, wheel lip moldings and wheel covers.
- Bright window frames, "B" pillar cap, drip and belt moldings. (Standard with the Luxury Decor Group.) Requires color-keyed passenger compartment carpeting option on two-door model.

Deluxe Bumper Group

Handsome front-end dress-up and protection includes:

- Front and rear bumper guards with rubber inserts and full-width horizontal rub strip on bumpers.

Protection Group

Inside-outside protection aids including:

- Door edge guards
- Locking gas cap cover
- Front floor mats
- Glove box lock
- Spare tire lock
- License plate frames

Other Popular Pinto Options

- Metallic Glow Paints in three glamour color choices.
- 2300 cc four-cylinder engine, two-barrel carburetion.
- Mirror Group, including outside remote-control, color-keyed dual mirrors, inside day/night mirror and visor vanity mirror.
- Light Group: including lights under hood, in glove box, ash tray, in cargo area and parking brake warning lights; headlights "lights-on" warning buzzer and passenger-side door courtesy light switch.
- Leather wrapped Steering Wheel



Ford Division

At the time of this release, specifications and prices contained herein are believed to be correct. Ford Division of Ford Marketing Corporation and other automotive manufacturers reserve the right to discontinue models at any time or change specifications, designs or prices without incurring obligation.