



# 76 Ford Torino

Full-size value in a mid-size car





**Ford gives you more of what you want in a mid-size car.**

**Better mileage . . .** Torino's standard and optional V-8 engines have been refined to give better fuel economy and improved driveability in terms of easier starting, better stop and go response and smoother acceleration. In addition, Torino has optional engines that run on lower priced regular gasoline that's readily available anywhere. See your Ford Dealer for details.

**Quality Built.** The Torino owner will enjoy a number of features to reduce scheduled maintenance. Further evidence of quality is in Torino's quiet, solid feel and the fine fit of its parts. And like all our cars, Torinos are built with Ford's Safety Design Features.

**Ford Means Value.** A look at Torino standard features show you value in no uncertain terms. Because it is so well equipped and so well built, Torino is a sound investment—when you buy and when you trade.

**Torino**

Our least expensive Torino makes your mid-size car investment go a long way with standard features like our more expensive models: 351 2V V-8, SelectShift Cruise-O-Matic transmission, power steering, power front disc brakes and full six-passenger roominess. See Torino Notable Standard Features on page 3 for many more. Its finely fitted and finished workmanship will compare favorably with higher priced Fords. Three models: 2-Door Hardtop, 4-Door Pillared Hardtop and Wagon.

**Torino Cloth and Vinyl Interior** (right). Illustrated in Saddle (Code PZ).

**Torino 2-Door Hardtop** (below) has a 114-in. wheelbase. You can give the base Torino model an upper series look with such options as vinyl roof, opera windows, dual color-keyed mirrors, deluxe bumper group, vinyl insert bodyside moldings, dual accent body paint stripes and deluxe wheel covers. Saddle Bronze Metallic (Code 5T).



**Gran Torino**

Year after year, it's our best-selling mid-size. A look and a drive will tell you why. The Gran Torino takes you a big step up in luxury and distinction at a very modest move in price. You'll enjoy full six-passenger roominess, the protection of Ford's Safety Design including side guard rails, and many other features and extra refinements that mean extra pride of ownership. For example, you get many upper series features: bright-metal rocker panel moldings and wheel lips, also molding on lower back panel. A high series sound package provides extra insulation for more quiet. All these features emphasize Gran Torino as a very special value car. (See Gran Torino Notable Standard Features list on page 5.) Behind the wheel, enjoy Torino's quiet quality and the solid feel of the same type body/frame construction as our standard-size Fords. Its handling and reassuring roadability are constant reminders that Ford means value.

Interiors are in luxurious good taste with the appointments, conveniences and fine-car details that add so much to your pride of ownership. You can choose either the 2-Door Hardtop or 4-Door Pillared Hardtop. And there's the Gran Torino Wagon—a handsome, practical, superbly fitted car for the active family.

Your search for the year's most attractive mid-size car value will start and end happily at your Ford Dealer's.

**Gran Torino Cloth and Vinyl Interior** with bench seat (right). Handsome design is deeply cushioned and pleated for your comfort. Medium Blue (Code BB).

**Gran Torino 4-Door Pillared Hardtop** (below), in Silver Metallic\* (Code IG) with optional Dark Blue vinyl roof. Six-passenger stretch-out room and a solid ride are provided by the big 118-inch wheelbase on all Torino 4-door models (114", 2-door models). Shown with vinyl insert bodyside moldings, deluxe bumper group, luxury wheel covers and Convenience Group.

\*See your Ford Dealer for details on ordering and delivery dates.



**Gran Torino Brougham**

From the admiring glances that come your way, you know Brougham is the top of the line. Here, indeed, is a tribute to your taste—a prestige car that's a constant pleasure to drive.

As on all Torinos, you get the solid ride and handling that give you a secure feeling of control, and you have the additional security of side guard rails and protective bumper system among other safety features. The Brougham gives you such fine-car features as vinyl roof, with opera windows on the 2-door model, wide vinyl-trimmed body molding color-keyed to the vinyl roof, deluxe wheel covers and generous brightwork, all standard.

Open the door and you enter a world of deep comfort, luxurious upholstery and magnificent appointments, classic in their attention to detail and precision fit. The many standard interior features designed for your comfort remind you in every way that you're driving a

truly fine car. And you drive it with the feeling of roadability and responsiveness. The Gran Torino Brougham is offered as a 2-Door Hardtop and 4-Door Pillared Hardtop. And there's almost no end to the ways you can cater to your personal pleasures, with such options as power-operated Sunroof, reclining passenger seat, power windows and Metallic Glow paint. (See all the available Torino options on the back cover.) Ford means value—and you owe it to yourself to see how satisfying a mid-size car can be.

**Split Bench Seat in All-Vinyl.** (Right) Easy-to-care-for grain effect. Dual armrests and RH and LH seat adjustment. Saddle Tan (Code GZ). Westminster cloth and vinyl is also a standard choice.

**Gran Torino Brougham 4-Door Pillared Hardtop**, below, in Creme (Code 6P) with Brown vinyl roof. The vinyl roof and wide vinyl-trimmed bodyside molding are color-matched. Note how optional fender skirts add to Torino's sleek look.



**Gran Torino Brougham**

(A) **Gran Torino Brougham 2-Door Hardtop** is shown here in Dark Red (Code 2M). The matching Red\* vinyl roof, opera window, matching vinyl insert bodyside moldings and full-width red lens rear treatment are top-of-the-line Brougham distinctions.

(B) **The Elegant Brougham Interior** in soft, rich cloth in Black (Code FA). The split bench seat and fold-down dual armrests are standard Brougham luxuries—plus thick cut-pile carpeting, simulated woodtone steering wheel accents, and much more (see Gran Torino Brougham Notable Standard Features at right). Pleated all-vinyl seat trim (page 6) instead of Westminster cloth is available at no extra cost.

(C) **Wide Doors and Wide Seats** provide unusual rear seat comfort for a mid-size car in this Brougham and all Torino models. Westminster cloth in Saddle (Code FZ).

(D) **Power Side Windows.** Fingertip control for both driver and passengers



of all four windows on 4-door models, front windows only on 2-door models. Power tailgate window also available on station wagons (standard on Squire). A lockout switch cancels all but the driver control when desired, a safety factor important when children are in the car.

**Power Door Locks.** (D inset) More than a great convenience—a reassuring security precaution. Front door master control button locks front and rear doors. Like power windows, power door locks are

\*See your Ford Dealer for details on ordering and delivery dates.

considered by many owners to be a necessity when driving with children. For a completely secure feeling, order both. Available on all Torinos. Includes power tailgate lock on wagons.

(E) **Fingertip Speed Control.** A relaxing convenience for open highway cruising. Maintains your preset speed above 30 mph without your foot on the pedal. Just press the steering wheel button to engage, press brake pedal or steering wheel button to disengage. Driving is more restful and you conserve fuel because steady speeds give better gas mileage. Includes Luxury Steering Wheel. Available on all Torino models.

(F) **Sunroof Option.** Merely touch a button to enjoy fresh air and sunshine on 2-door models. Operates smoothly and quietly, seals tightly.

(G) **Gran Torino Squire.** Woodgrain vinyl body paneling, deluxe wheel covers and power tailgate window are among the features of this top-of-the-line wagon. Shown in White (Code 9D). In addition to its distinctive exterior, the Gran Torino Squire provides you with equally distinctive interior luxury and styling. See Station Wagon catalog for full details.

**Gran Torino Brougham Notable Standard Features**

- All Gran Torino Notable Standard Features (page 5) with these differences or additions:
- APPEARANCE & COMFORT**—Split bench seat with dual fold-down armrests  
□ Choice of Westminster cloth and vinyl or all-vinyl trim □ Deluxe wheel covers □ Color-keyed deluxe belts □ Bright rocker panel moldings □ Electric clock □ 18-oz. cut-pile carpeting □ Westminster cloth door trim □ Simulated woodtone instrument panel/cluster applique □ Vinyl roof □ Opera window (2-door) □ Wide protective bodyside molding with vinyl insert color-keyed to roof (except Squire) □ Wide bright belt moldings (2-door) □ Unique red lens applique on lower back panel □ Hood ornament □ "Brougham" ornamentation on rear roof quarter and lower back panel.
- Additional Gran Torino Squire Equipment:**  
**FUNCTIONAL**—3-Way Magic Doorgate  
□ Power tailgate window.
- APPEARANCE & COMFORT**—Pleated all-vinyl trim □ Woodtone vinyl appliques on steering wheel, instrument panel and door trim panels □ Rear bumper guards □ WSW tires □ Simulated woodgrain vinyl bodyside and doorgate paneling □ Distinctive "Squire" ornamentation on fender. (Clock not standard.)
- Note: Other items illustrated are optional.

Torino 2-Door Hardtop



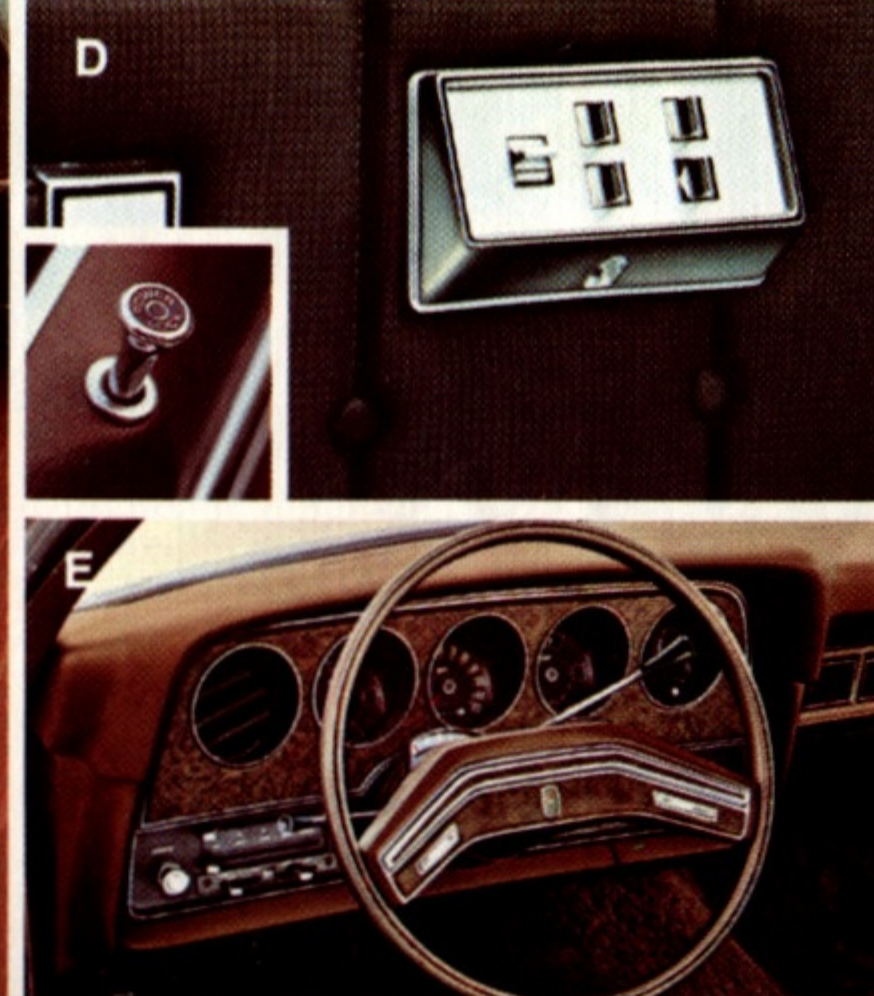
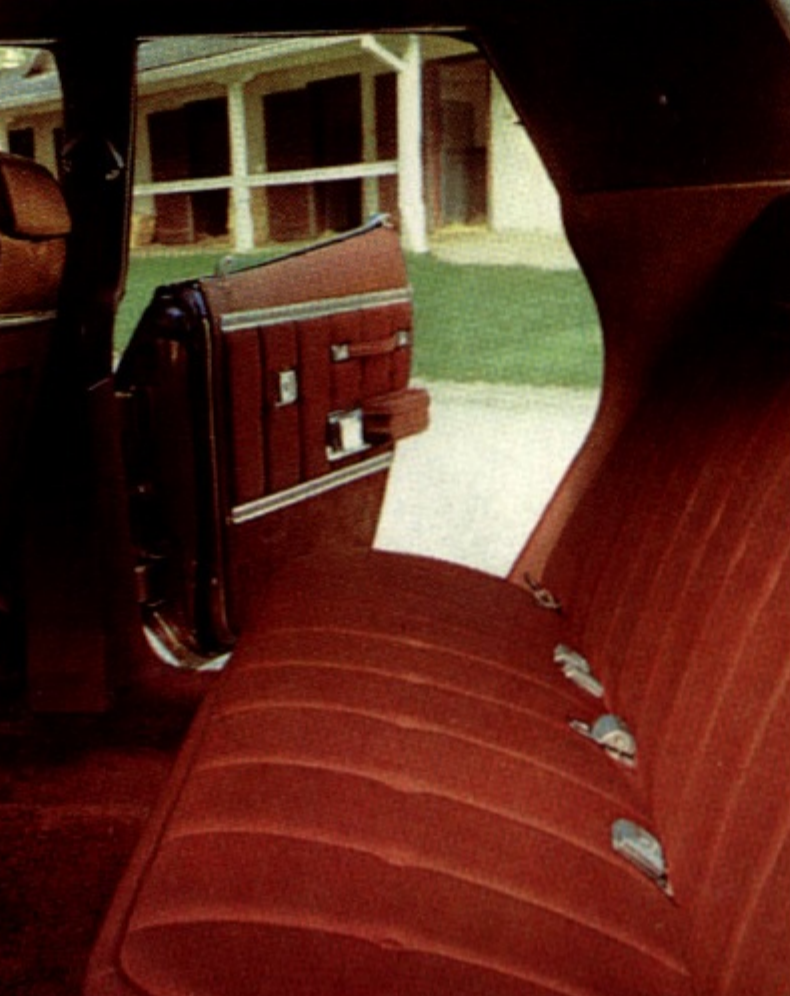
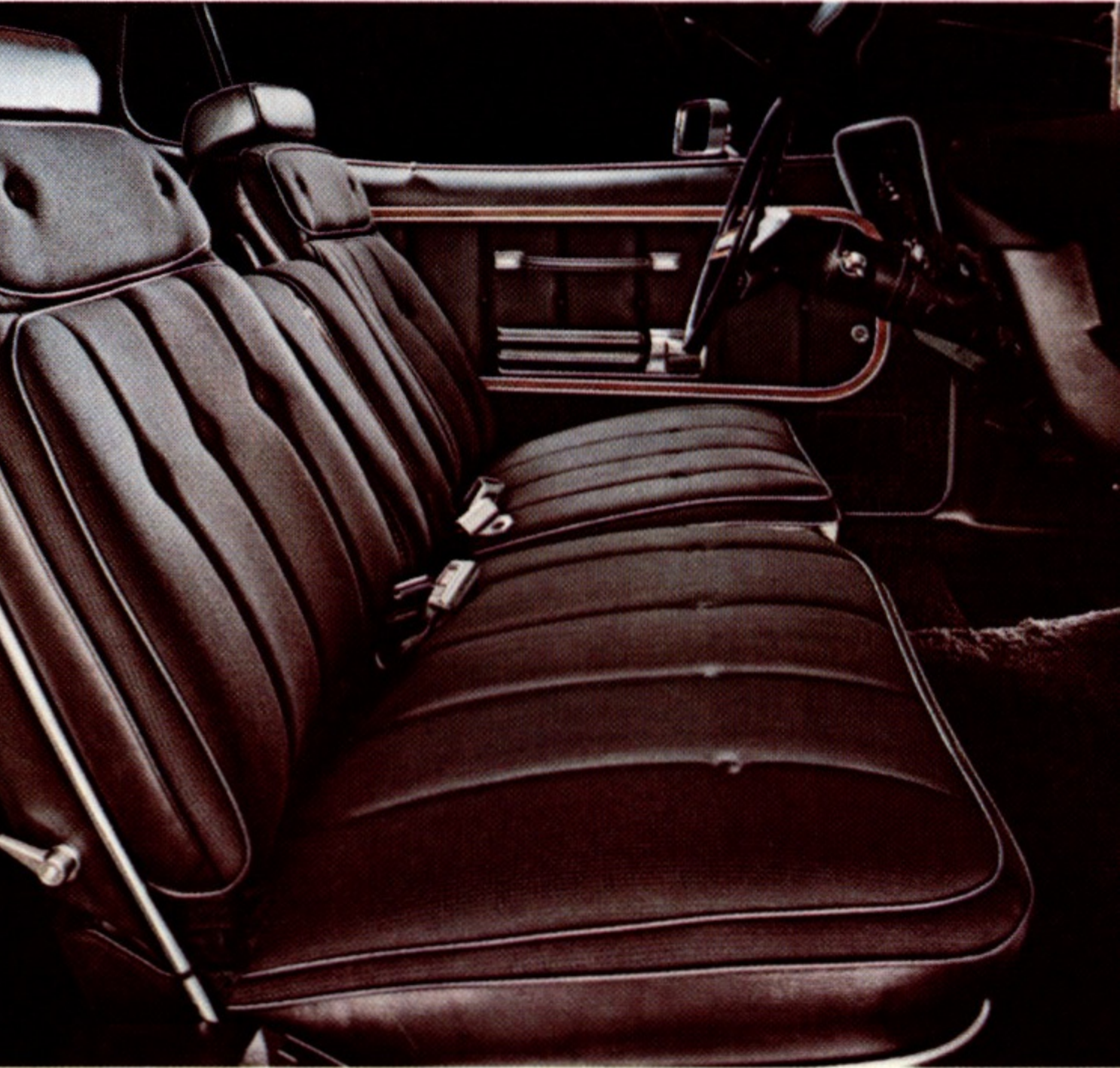
Cover: Gran Torino Brougham 4-Door Pillared Hardtop in Tan Metallic (Code 5U) with Dark Brown vinyl roof.

Notes: Some items shown in this book are optional. See Torino, Gran Torino, and Gran Torino Brougham Notable Standard Features on pages 3, 5 and 7. Also see back cover for color, code reference, measurements and options in detail.

Gran Torino 4-Door Pillared Hardtop



Gran Torino Brougham 4-Door Pillared Hardtop





## Gran Torino

(A) **Gran Torino 2-Door Hardtop.** Enjoy the convenience of big six-passenger roominess and extra riding comfort of its 114-inch wheelbase. Smart rear styling is enhanced by wraparound taillights, which also serve as extra side warning protection at night and under conditions of poor visibility. Magnum 500 wheels, trim rings and WSW tires add a distinctive styling touch. Gold\* (Code 6V).

(B) **The Glamour of White and Gold** features this optional Gran Torino vinyl interior with bench-type front seat (C8). The predominantly White interior is enriched with Gold carpeting, instrument panel, steering wheel and seat belts. In addition to its luxury, the Gran Torino interior is pleasantly quiet, as a result of its standard equipment high series sound package.

(C) **Automatic Seat Back Release.** A real convenience and courtesy for rear seat passenger that is available in all 2-door models. The seat back latch which, by law, is locked when the door is closed, is automatically released when door is

opened. You'll find it extremely handy, too, when packages or clothing are placed in the rear compartment. Women, especially, will appreciate this thoughtful convenience, and children can enter and leave much easier.

(D) **Light Group.** A benefit to the driver as well as passengers. This popular option on all Torino models includes lights for ash tray, glove compartment, engine compartment and trunk, or cargo area of



wagons. Also includes dual beam map light (shown), instrument panel courtesy light, rear door courtesy light switches on 4-door models, headlights "lights on" warning buzzer.

(E) **Fender Skirts.** Add a sleek look to the graceful lines of the Gran Torino or Brougham models. Additional illustration page 6.

(F) **Remote Control RH Mirror** is an extra safety measure for the driver when parking and changing lanes and a convenience to the passenger. Available on all Torino models as part of the Convenience Group (see back cover for complete details). Left-hand remote control mirror is available as a separate option.

(G) **Gran Torino Wagon.** The mid-size six-passenger wagon with all the Gran Torino standard features. Comes with 3-Way Magic Doorgate, bench seat, pleated all-vinyl trim and rear bumper guards. Rear-facing seat for two extra passengers is optional. Seat converts to load floor easily and quickly, makes your Gran Torino Wagon adaptable to a variety of needs. Saddle Bronze Metallic (Code 5T). See Station Wagon catalog for full details.

## Gran Torino Notable Standard Features

FUNCTIONAL—351 CID 2V V-8 with solid state ignition □ SelectShift Cruise-O-Matic Transmission □ Power steering □ Power front disc brakes □ Gas-saving steel-belted radial ply 14" BSW tires □ Heater/defroster □ DirectAir Ventilation □ Inside hood release □ Wiper-mounted windshield washers □ Dual headlights □ Ford Safety Design Features, including side guard rails and protective bumper system.

APPEARANCE & COMFORT—Full-width bench seat □ Brocade pattern cloth and vinyl trim □ Two-spoke steering wheel □ Rear armrests (2-door) □ Day/night rearview mirror □ Trunk mat □ Bright and argent grille □ Bright drip and quarter window and windshield moldings □ Hub caps □ Bright rocker panel moldings □ Bright wheel lip moldings □ Lower back panel moldings □ High series sound package □ Distinctive "Gran Torino" ornamentation.

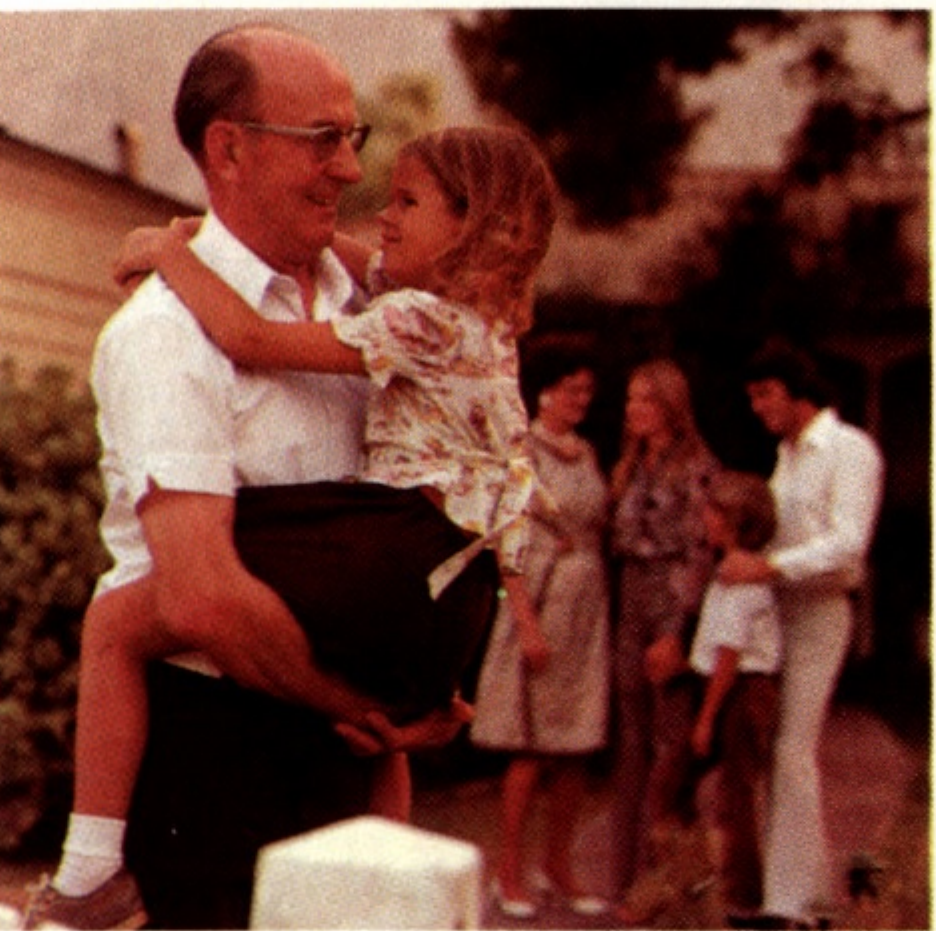
**Additional Gran Torino Wagon Equipment:** Pleated all-vinyl trim □ Rear bumper guards □ Removable cargo floor carpet.

Note: Other items illustrated are optional.

## Torino

(A) **Torino 4-Door Pillared Hardtop.** Built on the long 118-in. wheelbase of our Gran Torino and Brougham 4-Door models for comfort and driving stability. It's the ideal mid-size six-passenger family car. Green Glow (Code 4T).

(B) **Torino All-Vinyl Interior,** preferred by many for its durability and easy maintenance, is standard on the Torino Wagon, optional on Hardtops. Medium Green (Code AG). Color-keyed carpeting is



standard. Torino seats measure nearly five feet across for roominess. And you ride with the added protection provided by Ford's Safety Design side guard rails.

(C) **Vacation-size Trunk** in all Torino 2- and 4-Door models provides 16.5 cu. ft. of space. And you can have even more space if you order a Space Saver Spare Tire. Also available is the Luggage Compartment Trim option which includes carpeting, side and rear lining boards and spare tire cover, for a dressier look and better cargo protection.

(D) **Opera Windows.** One of today's most popular styling accents enhances Torino beauty as well as providing improved visibility. This year it's available as an option on both Torino and Gran Torino 2-Door Hardtop models with vinyl roof. Standard on Brougham 2-Door Hardtop.

(E) **Fuel Sentry Vacuum Gauge.** A timely better idea option on all Torinos to help you improve your driving habits and reduce fuel consumption. Gauge needle alerts you when low engine vacuum is robbing you of fuel and indicates whether your gas mileage is "good" or "poor." Also available is the **Fuel Monitor Warning Light**, which uses a light instead of the gauge. Either will prove to be a worthwhile investment in view of

today's increasing fuel costs and the need to conserve gasoline wherever possible.

(F) **Dual Color-Keyed Remote Control Mirrors** are a sporty option on all Torinos. Both side mirrors adjust easily without lowering window. Extremely useful in bad weather or when you want to keep the windows closed with air conditioning. Practical when several members of the family drive. A similar bright-metal mirror combination is available in the Convenience Group.

(G) **Torino Wagon.** You'll be surprised to see so many standard-size features in a mid-sized wagon: 3-Way Magic Doorgate that works like a tailgate or opens like a door with windows up or down. Six-passenger roominess. More than seven feet of flat, carpeted load length wide enough to take 4' x 8' plywood boards between the wheelhousings. There's nearly 85 cubic feet of cargo volume above deck, plus an additional 8 cubic feet of lockable stowage space underneath the deck at rear. Like all Ford-built cars, Torino Wagons have Safety Design Features, including side guard rails, protective bumper system and many others. See the 1976 Ford Station Wagon catalog for full details. Dark Yellow Green Metallic (Code 4V).

## Torino Notable Standard Features

FUNCTIONAL—351 CID 2V V-8 with solid state ignition □ SelectShift Cruise-O-Matic transmission □ Power steering □ Power front disc brakes □ Gas-saving steel-belted radial ply 14" BSW tires □ Heater/defroster □ DirectAir Ventilation □ Inside hood release □ Wiper-mounted windshield washers □ Dual headlights □ Ford Safety Design Features, including side guard rails and protective bumper system.

APPEARANCE & COMFORT—Full-width bench seat □ Linaires cloth and vinyl trim □ Color-keyed 12-oz. cut-pile carpeting □ Two-spoke steering wheel □ Day/night rearview mirror □ Trunk mat □ Bright and argent grille □ Bright drip and quarter window and windshield moldings □ Hub caps □ Distinctive "Torino" identification.

**Additional Torino Wagon Equipment:** FUNCTIONAL—3-Way Magic Doorgate with manual window □ Fold-down second seat □ Lockable below-deck storage □ Rear bumper guards □ Removable cargo floor carpet.

APPEARANCE & COMFORT: Bright tailgate window molding.

Note: Other items illustrated are optional.

## Torino Options

Make your Torino something special.

### Appearance and Protection:

□ Accent Group. Inexpensive dress-up group that includes wheel lip moldings and dual accent bodyside paint stripes available on Torino 2-Door Hardtop and 4-Door Pillared Hardtop.

□ Belts, Color-Keyed, Deluxe styling.

□ Bumper Group, Deluxe. Includes front and rear bumper guards with rubber inserts and full-width horizontal rub strips on front and rear bumpers. See illustrations, pages 2, 5, 6, 7.

□ Luggage Compartment Trim. Includes carpeting, side and rear lining boards and spare tire cover for neat appearance and cargo protection. See illustration, page 3.

□ Moldings, Rocker Panel. Standard on Gran Torino and Gran Torino Brougham.

□ Moldings, Vinyl Insert. Inexpensive, good-looking protection for body sides. Black (Brown on Squire). See illustrations, pages 2, 3, 4, 5.

□ Opera Window for Torino and Gran Torino 2-Door Hardtop models. See illustrations, pages 2, 3.

□ Paint, Metallic Glow. A deep lustrous finish available in Silver Blue Glow, Green Glow, Golden Glow and Tan Glow.

□ Paint Stripes, Dual Accent Body Side. For an attractive extra styling touch. Standard with Accent Group. See illustrations, pages 2, 7.

□ Protection Group. Stylish as well as practical. Includes front color-keyed floor mats, door edge guards and bright license plate frames. Door edge guards are deleted on Gran Torino Squire.

□ Security Lock Group. Includes lockable inside hood release, spare tire lock and locking gas cap.

□ Skirts, Fender, Gran Torino and Brougham Hardtop. See illustration, page 5.

□ Steering Wheel, Leather-Wrapped. Adds a sporty look and feel.

□ Steering Wheel, Luxury. Includes attractive woodtone vinyl appliques. Standard with Fingertip Speed Control. See illustration, page 7.

□ Tires. All 1976 Torinos are available with a selection of gas-saving steel-belted radial tires. In black sidewall or white sidewall.

□ Trim, Dura-weave Vinyl Seat. Looks like fabric. Available on Gran Torino Wagon and Gran Torino Squire models.

□ Trim, Pleated Vinyl Bench Seat. Available on Gran Torino Hardtop or Pillared Hardtop models. Standard on Gran Torino Wagon and Gran Torino Squire models.

□ Trim, Vinyl Bench. Available on Torino series Hardtop or Pillared Hardtop models. See illustration, page 3.

□ Trim, Vinyl Split Bench. Available on Gran Torino Brougham models. Standard with Squire Brougham option. See illustration, page 6.

□ Vinyl Roof. The always popular dress-up option. Eight colors: White, Black, Blue, Green, Brown, Red, Silver, and Tan. Standard on Brougham. See illustrations, pages 2, 4.

□ Wheel Covers, Deluxe. Slotted design. Standard on Gran Torino Wagon models and Squire. See illustrations, pages 2, 3, 5.

□ Wheel Covers, Luxury. Rich, jewel-like web effect. See illustrations, pages 6, 7.



(A) **The open road** is a relaxing pleasure with Torino's solid road-hugging ride, quiet and handling. Gran Torino Brougham 2-Door Hardtop in Saddle Bronze Metallic (5T) with Tan vinyl roof.

(B) **All-vinyl bucket seats** (left) are a sporty Gran Torino 2-Door option. Includes SelectShift Cruise-O-Matic floor shift, handy storage console and individually adjustable seats. White with Black (Code SW).

ice and snow, helps keep rear window dry. □ Light Group. See page 5 for details.

□ Locks, Electric Power Door. See page 7 for details.

□ Mirrors, Outside Color-Keyed Remote Control. See page 3 for details.

□ Mirror, Illuminated Visor Vanity.

□ Sunroof, Power-Operated. Available on 2-door models. See page 7 for details.

□ Seat Back Release. See page 5 for details.

□ Seat, Power 6-Way. Allows better seating position for all members of the family, lets you change position on long trips. Available on full-width bench seat or driver's side on split bench seat.

□ Seat, Manual Reclining Passenger. Restful on long trips. Available with split bench seat. □ Speed Control, Fingertip. See page 7 for details.

□ Steering Wheel, Tilt. Five positions for easier entry and exit, more comfort.

□ Tinted Glass. Cuts glare, makes driving more comfortable. On all windows. Recommended with air conditioning.

□ Tire, Space Saver Spare. More trunk room. □ Trunk Release, Electric. Opens from inside.

□ Windows, Power Side. See page 7 for details.

**Performance and Economy:**

□ Axle, Optional Ratio. For extra pulling power.

□ Axle, Traction-Lok Differential. Assures traction, not wheel spinning.

□ Electrical System, Heavy-Duty.

□ Engine Block Heater. Faster cold-morning starts.

□ Engines—400 CID 2V V-8 or 460 CID 4V V-8, both with solid state ignition.

□ Fuel Sentry Vacuum Gauge or Fuel Monitor Warning Light. See page 3 for details.

□ Suspension, Heavy-Duty Handling.

□ Trailer Towing Packages, Medium and Heavy Duty, Class II and III. See your Ford Dealer for details.

## Special Wagon Options:

□ Luggage Rack. Also Deluxe model which includes integral rear window air deflector and adjustable rear crossbar. See illustrations on pages 3, 5, 7.

□ Power Tailgate Window. Standard on Squire model.

□ Rear Facing Third Seat (Gran Torino and Squire). Provides additional seating for two.

## Measurements

	2-Door	4-Door	Wagons
Wheelbase.....	114"	118"	118"
Length.....	214.4"	218.4"	223.2"
Height.....	52.6"	53.3"	54.9"
Width.....	79.3"	79.3"	79.0"
Front Tread.....	63.4"	63.4"	63.4"
Rear Tread.....	63.5"	63.5"	63.1"
Trunk or Cargo Volume† (cu. ft.)	16.5	16.5	84.9a
Fuel Capacity (gal.).....	22.0	22.0	17.5
Passenger Capacity..	6	6	6b

Curb Weight (lb.): Torino—2-Door, 4178; 4-Door, 4260; Wagon, 4550; Gran Torino—2-Door, 4214; 4-Door, 4301; Wagon, 4577. Brougham—2-Door, 4269; 4-Door, 4325; Squire 4594.

† Usable luggage capacity for hardtops, cargo volume index for wagons.

a) Plus 8.1 cu. ft. of lockable below-deck stowage.

b) Eight with optional Rear Facing Third Seat in Gran Torino and Squire.

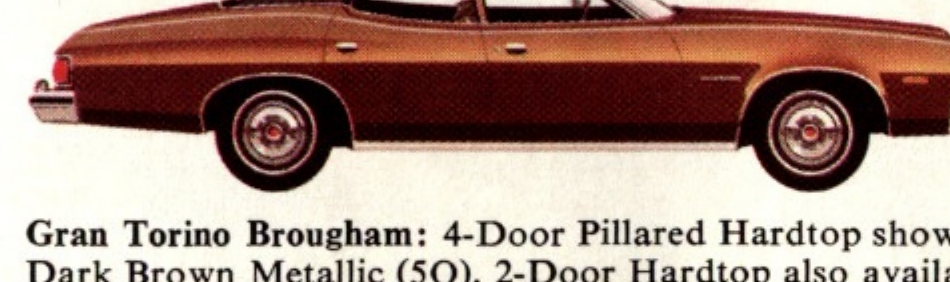
## Choice of 9 Models



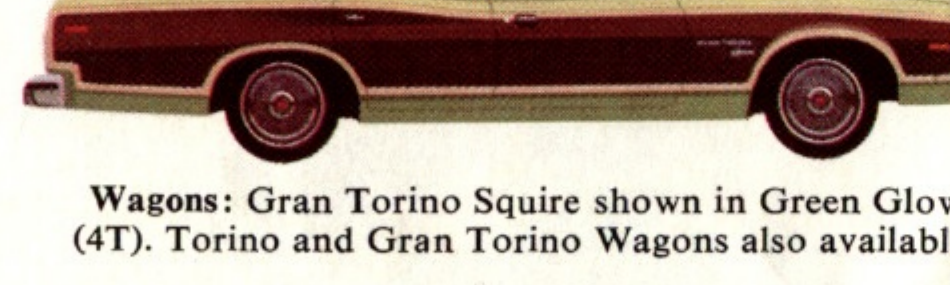
Torino: 4-Door Pillared Hardtop shown in Dark Blue Metallic (3G). 2-Door Hardtop also available.



Gran Torino: 2-Door Hardtop shown in Saddle Bronze Metallic (5T). 4-Door Pillared Hardtop also available.



Gran Torino Brougham: 4-Door Pillared Hardtop shown in Dark Brown Metallic (5Q). 2-Door Hardtop also available.



Wagons: Gran Torino Squire shown in Green Glow (4T). Torino and Gran Torino Wagons also available.

FORD TORINO



Litho in Canada

# 76 Ford Torino

Full-size value in a mid-size car

