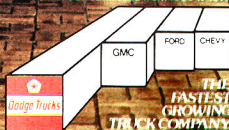


Dodge

VANS FOR WORK OR PLAY '78



237% increase from 1968 to 1977



THE
FASTEST
GROWING
TRUCK COMPANY
IN AMERICA



Add your own personal touches to basic Street Van style. (Some equipment items pictured here may need to be secured through customizing shops.)

TWO REASONS FOR DODGE VAN POPULARITY: WORK AND PLAY.

They're built to give you the best of both worlds. Ask any Street Van owner! This year, Dodge Tradesman's special brand of stylish, sturdy performance is better than ever, whether your loads are for pay or play. Because, as you'll see on these pages, there's extra value everywhere you look—and in hard-to-see places, as well. *More* of the value that's made Tradesman a leader in its class.

Street Van puts fun first.

This is the one that's led a nationwide trend to vans as *fun* vehicles. For '78, it offers all the value of Tradesman, plus an assortment of special features that provide the basis for a set of wheels that's as individualistic as you are. Starting with bright trim on front grille surround molding, front and rear bumpers, windshield molding, tail lamp bezels, and side mirrors—for the kind of sparkle that livens things up on the outside. Add



to this your choice of either five-slot chrome disc or white-painted steel spoke sport road wheels. *Plus* fat H70x15-B raised white letter tires. The interior mood is equally lighthearted, the result of handsome "extras" like high-back Command bucket seats for driver and front passenger finished in striped cloth, with vinyl side facings and inboard folding armrests. Also, color-keyed carpeting in the driver's compartment, new high-style color-keyed instrument panel, and



This spacious body (below) suits your gear- and equipment-carrying needs ideally. With a little imagination, it can become a "home on wheels."



new color-keyed vinyl front door trim panels with simulated wood-grained applique. The Street Van idea is to start you out *sharp*...and inspire you to add decorative touches of your own. What better way to make your van yours, and yours alone! **Because you're you... a do-it-yourself Customizing Kit.** Street Van again invites you to be yourself, in a vehicle that tells the



Interior comfort and appearance to put you in the mood for fun. High-back Command bucket seats feature colorful striped cloth and inboard folding armrests. Swivel seats with dual armrests are optional. Both types of seats are available with Red, Blue, Green, or Saddle cloth with matching vinyl seat facings.



world you've got ideas of your own. To help you get this added enjoyment, your Street Van comes equipped with a kit of customizing ideas and materials. Just what you need to finish off both interior and exterior, just the way you want them. There are illustrations and trick paint-scheme designs for the outside...along with full-sized paper templates and step-by-step illustrated instructions for doing a professional-looking job on the inside. Use them any way you please!

Add your ideas to basic Street Van sparkle and spirit.

Start with an eye-catcher like the Bright Yellow model shown above, with five-slot chrome deep-dish wheels. And an optional sliding side door that adds to gear-loading convenience. Choose from a long list of enjoyable options, such as 40-channel CB radio and new Sky Lite sun roof. And from fourteen dazzling exterior colors.



Extra-compact, maneuverable 109-inch-wheelbase Dodge van is available with optional sliding cargo door, as shown at left, or with standard dual doors.

Maxivan, biggest in the business. Shown below with sliding cargo door and dress-up options including Lower Side Exterior Molding Package, Custom Exterior Package, whitewall tires, and full wheel covers.

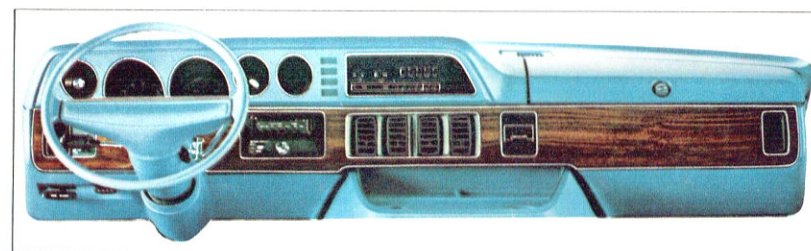


New interiors.

There's more on-the-job comfort from newly designed low-back bucket seats with forty percent more seat padding; mounted to improve both seating position and headroom. New compact engine cover allows more footroom, adds to loadspace, as well. New styling includes good-looking, plaid-pattern vinyl seat trim, standard; deluxe single-tone vinyl trim, available. Optional high-back Command seats with stationary seatbacks have striped cloth-and-vinyl trim. Optional reclining high-back Command seats are trimmed in patterned cloth and vinyl.

New interior colors.

For 1978, Dodge offers new colors to enhance the interior of your Tradesman van. The standard plaid vinyl seats (shown at left) are available in Black, Blue, Green, or Saddle. All optional seats may be ordered in Red, Blue, Green, or Saddle upholstery.



New instrument panel.

As good-looking as most passenger car panels, color-keyed to match interior. Designed for easy servicing of gauges, speedometer, and radio from the front of the panel. Provisions for optional integral front air-conditioning outlets and optional fluorescent display digital clock are featured.

DODGE VAN VALUE KEEPS ON GROWING.

That's one major reason why Dodge is the fastest growing truck company in America.*

America's favorite working vans offer even more value for '78: In newness where it counts, in features that add to on-the-job ease and efficiency. New bucket seats, for example, designed for extra comfort. New suspended accelerator pedal. New foot-operated parking brake. New

* 237% increase from 1966 to 1976.

front foot room. New optional intermittent windshield wiper system. And Dodge vans have never *looked* so good. There's a smart new instrument panel (you can add an optional fluorescent display digital clock), a new color-keyed steering column, and new eye-pleasing interior trim.

On the outside, newness from bumper to bumper is designed to increase your pride of ownership and business prestige. Smart new paint-filled body moldings, new

larger taillights and side marker lights, new optional body tape striping and two-tone paint procedures. Plus new sun roof options to make your work more pleasant than ever before. More van for the money, inside and out: That's what Dodge vans are all about!

Choice adds to Dodge van value.

It means you can get the *right* truck—the one that suits your needs

precisely. Choose from B100, B200, and B300 models. Select the 109-inch-wheelbase van for maximum maneuverability. Or get a popular all-purpose 127-inch-wheelbase hauler. Or Maxivan, the biggest van in America. Your cargoes, whatever they may be, can be accommodated by a wide range of payload capacities that go all the way up to 4,860 pounds in B300 Maxivan. You can count on the right engine, too, selected from a lineup that extends from the standard 225

Super Six* to a big optional 440 V8. And for '78, all models offer you the added convenience of a single rear door and a sliding cargo door, as options.

Extra-value features save you time and money.

You'll like Dodge Tradesman's special ability to make short work of big-load deliveries and reduce expenses as they go. You get extra space for profitable cargoes, with the engine positioned well forward,

out of the way. And extra hauls per day can stem from nimble maneuvering in traffic, the result of a short turning diameter that's designed into every model. Servicing is easier, too, thanks to the wide-opening hood that puts key engine check points at your fingertips.

Also, when wheel alignment is necessary, it can be done readily, on car wheel alignment equipment. Dodge vans are *practical*; that's why they're so popular.

* 225 engine not available on B300 models in California.

THE INNER VAN: A PLAN THAT WORKS.



Dodge vans are planned for efficiency. So you can do more work per day, with ease.

Bigger payloads often mean bigger paydays; so Dodge Tradesman vans are designed to enable you to pack in as much profit-producing payload as possible. You get space—as much as 297 cubic feet of it in the new, longer Maxivan. In fact, *every* model offers space to spare. Planned to handle your longest loads, with the engine compartment located forward, where it takes up less space.

Even the details of interior design add to working efficiency. Wheel wells are *flat* on top, so you can stack cargo on them. A grooved floor makes it easier, and quicker, to slide heavy items in or out. A cargo area dome light is provided, so you don't fumble in the dark on nighttime runs.

And for '78, you'll find some pleasing improvements, as well. Like more optional glass area, for a better view of traffic. A handy fuse box, located beneath the glove box door. New steering column with combined starter and ignition switch, plus a steering column lock to protect against theft. And a new 16½-inch diameter steering wheel with soft-touch vinyl-covered rim.

Big choice of doors and windows.

Dodge vans come equipped with sturdy double-opening side cargo doors—fixed or vent door windows are available optionally. But if your loading requirements call for an optional *sliding* side door, you can now get it with or without glass on any model you select: 109-inch or 127-inch wheelbase, or Maxivan.

And you can pick the rear doors that best meet your loading needs. Either standard double rear doors, with optional windows...or exclusive optional single rear door, with a big fixed rear window. And all cargo area windows are available with Sunscreen glass.



DODGE VAN PAYLOAD ALLOWANCES

| Model | Wheelbase (in.) | Overall Length (in.) | Payload Allowance (Lbs.) Std.* | Max. |
|--------------|-----------------|----------------------|-----------------------------------|------|
| B100 | 109 | 175 | 1010 | 1980 |
| B200 | 109 | 176 | 2470 | 2745 |
| B300 | 109 | 176 | 2655 | 3935 |
| B100 | 127 | 194 | 800 | 1865 |
| B200 | 127 | 194 | 2225 | 2635 |
| B300 | 127 | 194 | 2435 | 4290 |
| B200 Maxivan | 127 | 220 | 2010 | 2450 |
| B300 Maxivan | 127 | 220 | 2240 | 4860 |

*Must be reduced by weight of vehicle occupants and optional equipment.

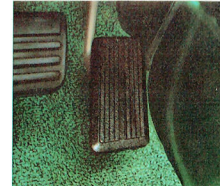
Convenient fuse box location.

It's right under the glove box door, so that servicing can be quick and easy, when required.



New suspended accelerator pedal.

It's designed to contribute to a more enjoyable interior. Carpeting can be more neatly installed; and it's easier to keep the driver's area clean and free of litter.



New parking brake.

Foot-operated, it's designed to hold the truck securely with minimum driver effort. The parking brake release handle is positioned for convenient hand use, on the lower left side of the instrument panel.



New vent window security.

For added protection of the interior, front door vent windows provide a positive detent latch, which locks in place when rotated to the full-closed position. A release button on the latch must be depressed before latch can be turned.

Equip the interior to suit your work needs.

The Dodge van plan includes customizing the cargo area, when your business requires it. Talk to your Dodge Dealer about the special shelves, bins, racks, and partitions you can order.



Why Dodge Tradesman can reduce maintenance and repair downtime:

The engine is easy to "get at," through the wide-opening hood. The most frequently checked components, oil and automatic transmission dipsticks, battery, and radiator, are right at the mechanic's fingertips.



Sturdy, stylish engine cover.

Thick fiber glass construction, color-keyed to add to interior decor; narrower and shorter, to increase front foot room and usable cargo area length; and fitted with indentations to hold cups. Cover can be removed easily for engine maintenance.



Vision Van: Room with a view.

This is the best Dodge van in sight; the option that offers a panoramic view all around, through new, larger glass windows. Bigger rear side window area (500 square inches bigger this year on the 127-inch-wheelbase model); bigger windows in side and rear cargo doors. More visibility through new wraparound rear quarter windows that add 960 square inches to total glass area, if you select the Maxivan version.

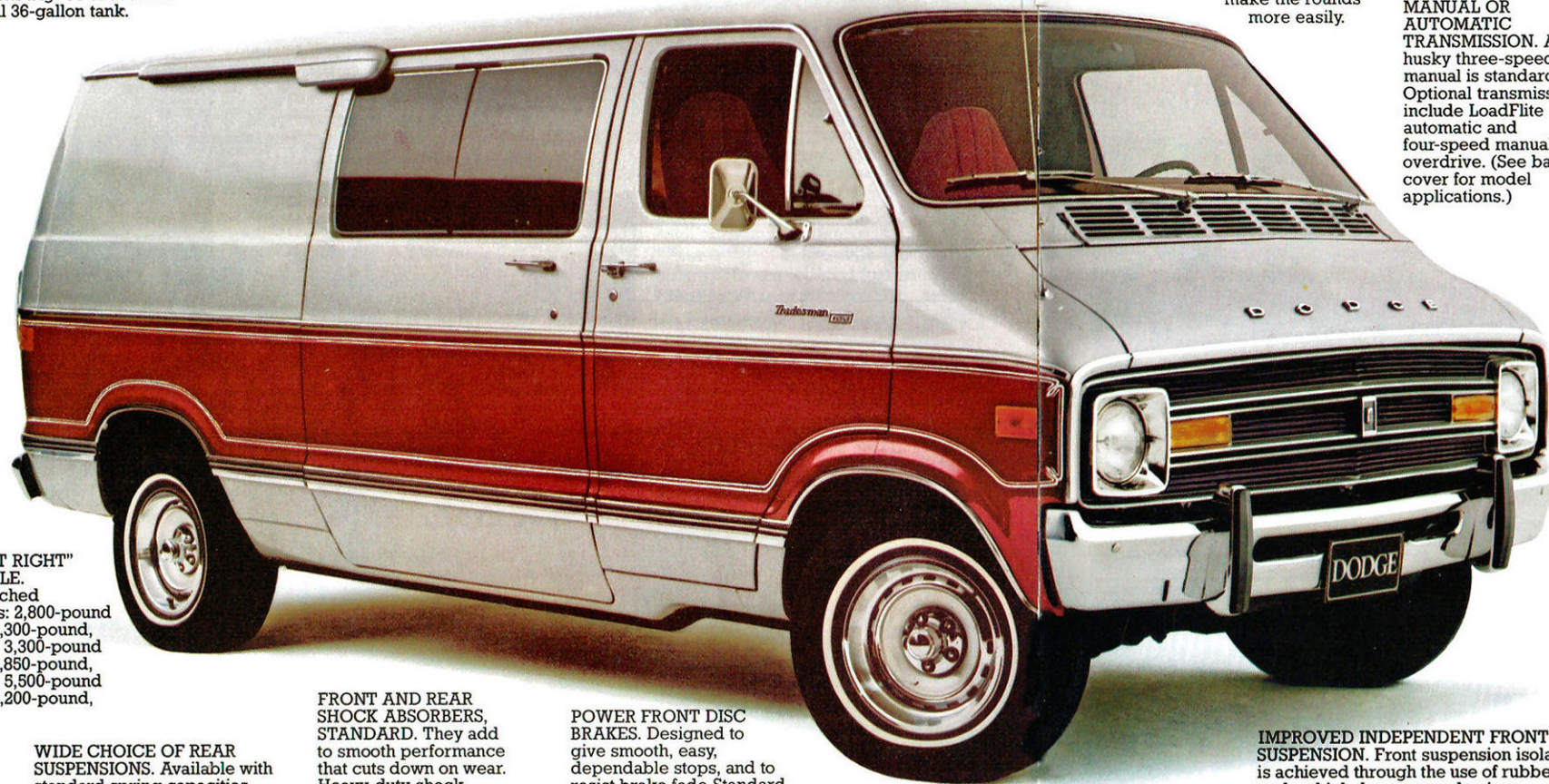
BIG-CAPACITY FUEL TANK. For more miles between fill-ups. Standard tank is 22-gallons big. Or choose the optional 36-gallon tank.

NEW EXTERIOR STYLE. Features that add to Tradesman's smart appearance include a "blackout" paint treatment grille, new larger taillights, new larger front and rear side marker lights,

relocation of upper molding for more distinctive two-tone paint treatment, and new optional Tape Stripe Package in white or gold colors.

SHORT TURNING DIAMETER. You get true compact truck maneuverability; sharp-turning agility in tight places, to help you make the rounds more easily.

MANUAL OR AUTOMATIC TRANSMISSION. A husky three-speed manual is standard. Optional transmissions include LoadFlite automatic and four-speed manual overdrive. (See back cover for model applications.)



THE "JUST RIGHT" REAR AXLE. Load-matched capacities: 2,800-pound in B100 (3,300-pound, optional); 3,300-pound in B200 (3,850-pound, optional); 5,500-pound in B300 (6,200-pound, optional).

WIDE CHOICE OF REAR SUSPENSIONS. Available with standard spring capacities from 1,170 pounds in B100 to 3,100 pounds in B300.

FRONT AND REAR SHOCK ABSORBERS, STANDARD. They add to smooth performance that cuts down on wear. Heavy-duty shock absorbers, front and rear, are optional.

POWER FRONT DISC BRAKES. Designed to give smooth, easy, dependable stops, and to resist brake fade. Standard on all models except B100, where they're optional.

IMPROVED INDEPENDENT FRONT SUSPENSION. Front suspension isolation is achieved through the use of rubber pads which dampen road noises.

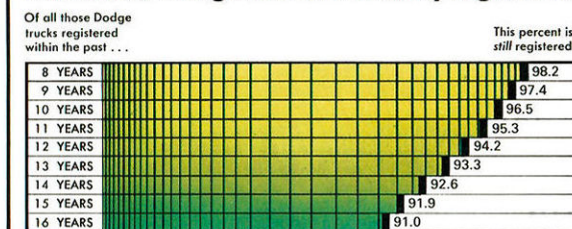


Extra-tough rustproofed exterior.

Dodge vans are not only built to last; they're also designed to keep looking good for years. First, those body and chassis components which are most exposed to moisture and road salt are protected by a heavy galvanized coating. And the body gets an extra-durable finish, starting with a five-stage zinc phosphate wash at 160°F (70°C), to prepare it for the primer coat. Finally, baked high-gloss acrylic enamel paint is applied, for maximum outer protection and eye appeal.

Evidence of long-lasting Dodge truck value: A high percentage of Dodge trucks registered over the past sixteen years are still in use.

Percent of Dodge trucks currently registered.



*Source: Registration Figures: R. L. Polk & Company. Trucks registered as of 7/1/76.

Custom van. (Shown at left.)

For added vanning enjoyment, order your Dodge Tradesman with an optional factory-installed Custom Exterior Package: Bright front and rear bumpers; bright grille surround molding, medallion, and windshield molding; bright hubcaps, exterior mirrors, and tail lamp bezels; bright upper side and rear molding and Custom nameplate.

Custom Interior Package includes color-keyed padded instrument panel with simulated wood-grained applique, color-keyed horn pad with simulated wood-grained insert, color-keyed deluxe vinyl-trimmed driver's seat, color-keyed carpeting in driver's compartment, and color-keyed vinyl front door trim panels with simulated wood-grained applique.

DODGE VAN TOUGHNESS: IT ADDS TO DEPENDABLE, LOW-COST PERFORMANCE.

It also adds to long truck life in rugged work or recreational service. Here are some basic reasons why Dodge Tradesman is a lot of van for the money. The solid construction features that add up to extra value and more trouble-free travel with less expense, through years of use.

Durable engine design. The standard Dodge van power plant is a proven 225-cubic-inch Super Six,* with two-barrel carburetion that contributes to performance and

driveability. Long-life features include overhead valve design, 30-degree tilt cylinder block, tin-plated aluminum alloy pistons, and cast-iron crankshaft.



Four V8s available.† Extra-rugged V8 power, to meet big-load hauling needs. Choose the 318-cubic-inch V8 with built-to-last features such as drop-forged I-beam steel connecting rods with aluminum bearings, and Steel Strut pistons with chrome-plated top compression rings. Or select from three bigger V8s: 360, 400, and 440 cubic inches, respectively. All Dodge van engines come equipped with an Electronic Ignition System, for less maintenance, longer spark plug life, and quick starts.

Available Dodge Van Paint Procedures:

PAINT PROCEDURE #1: Upper and lower (50/50) two-tone paint.

PAINT PROCEDURE #2: Two-tone; midsection. Midsection in one color, remainder of body in a second color.

TAPE STRIPE PACKAGE: Available with white or gold striping.



*Not available on B300 models in California.

†Refer to back cover for model availability and California usage.

DODGE VAN OPTIONS. MORE OF WHAT YOU WANT AND NEED.

New digital clock.

An added note of interior quality. Located near the center of the instrument panel, its blue-green vacuum display is easily visible.



Choice of wheels.

Five-slot disc chrome or white-painted steel spoke sport road wheels. (B100 or B200.)



Automatic speed control.

Simply set your speed where you want it. It will stay at that speed until you release the control or apply the brakes.



New Sky Lite sun roof.

Sunscreen glass overhead lets in light; and air, if opened slightly. Yet protects you from too much light. It can be removed from the inside for an open-air driving feeling. Factory-installed, available over the front seat area of all models; and over both front and cargo areas of 127-inch-wheelbase models.



Air conditioning.

Provides both cooling and heating, for year 'round comfort. Features six new high-level cooling air outlets in the instrument panel. For optimum comfort, each outlet can be adjusted both vertically and horizontally, or closed, if desired.



Choice of radios.

Instrument panel-mounted radio options are: AM, AM/FM, AM/FM/MX stereo, AM/FM/MX stereo/eight-track tape, AM/40-channel CB transceiver, AM/FM/MX stereo/40-channel CB transceiver.



CB radio.

40-channel CB radio features include digital CB channel display; monitor mode to override AM or FM reception; squelch control to mute background noise. CB microphone and lead are detachable.

Standard equipment

- Air cleaner—dry-type
- Alternator—48-amp
- Antifreeze
- Armrests—driver and front passenger
- Ashtray—driver's compartment
- Battery—48-amp-hr
- Bumpers—front and rear, painted
- Cargo doors (side and rear, double)—no glass
- Disc brakes—front
- Door locks—all doors
- Electronic Ignition System
- Floor mat—driver's side only
- Fuel tank—22-gallon
- Glove box
- Headliner—driver's compartment
- Heater—Fresh Air with defroster
- Horn—single
- Hubcaps—painted
- Jack—axle-type (B300); bumper-type (B100 and B200)
- Lights—backup; combined side marker light and reflector; front, amber (2); rear, red (2); dome, driver and cargo compartment
- Mirrors, exterior—dual, painted 5-inch x 7-inch
- Oil filter—throwaway-type
- Oil pressure indicator light
- Oil pressure gauge
- Seat—driver's bucket-type, including seat belt and retractor
- Shock absorbers—front and rear
- Spare tire carrier
- Sun visor—driver only
- Traffic hazard warning switch
- Windshield washers—wiper arm-mounted
- Windshield wipers—two-speed.

Additional optional equipment

- Batteries—89-amp-hr, 70-amp-hr, or 500-amp Long Life
- Vacuum booster brake (B100 only)
- Bright front and rear bumpers
- Cigarette lighter
- Tinted glass
- Dual electric horns
- Outside Molding Packages
- Convenience Package
- Insulation Package
- Trailer-Towing Packages
- Deluxe bucket seats
- Heavy-duty shock absorbers
- Heavy-duty front and rear springs
- Inside hood release
- 63-amp alternator
- High-back Command bucket seats
- Road wheels, chrome styled
- Sunscreen windows
- Power steering
- Premium wheel covers
- Increased cooling
- Window combinations
- Lock Package
- Light Package
- Front and rear bumper guards
- Digital clock
- 36-gallon fuel tank
- Oil pressure gauge and trip odometer
- Cargo area headliner
- Dual 7 1/4-inch x 10 1/4-inch exterior mirrors.

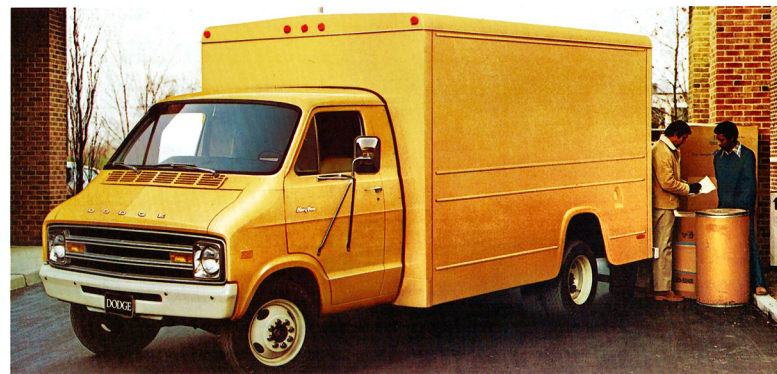
CUSTOM EXTERIOR PACKAGE

- Bright front and rear bumpers
- Bright grille surround molding and grille medallion
- Bright windshield molding
- Bright hubcaps
- Dual 5-inch x 7-inch bright exterior mirrors
- Bright upper side and rear molding
- Bright tail lamp bezels
- Custom nameplate.

CUSTOM INTERIOR PACKAGE

- Color-keyed padded instrument panel with simulated wood-grained applique
- Instrument panel skirts
- Color-keyed horn pad with simulated wood-grained insert
- Cigarette lighter and light
- Deluxe vinyl-trimmed driver's seat, color-keyed
- Color-keyed carpeting in driver's compartment
- Garnish trim over "A" pillar, front door headers, and around windshield
- Color-keyed front door vinyl-trim panels with wood grain.

DODGE KARYVAN. COMPACT TRUCK ECONOMY, WITH UP TO 720 CUBIC FEET OF CARGO SPACE.



KARYVAN SPECIFICATIONS

| MODEL | CR300 | CR300 | CB400 |
|-------------------------------|--|---|--|
| WHEELBASE (in.) | 127 | 145 | 163 |
| GVW (lbs.)—Std./Opt. | 7700/8200 | 10,000 | 11,500 |
| BODY LENGTH (in.) | 10 | 12 | 15 |
| BODY WIDTH (in.) | 80 | 96 | 96 |
| AXLE CAPACITY (lbs.) | | | |
| Front | 3500 | 4000 | 4500 |
| Rear | 5500 | 7500 | 8000 |
| SPRING RATING (lbs.) | | | |
| Front—Std./Opt. | 1725 | 1915/2000 | 2000 |
| Rear—Std./Opt. | 2570/3100 | 3600 | 4000 |
| SHOCK ABSORBER DIAMETER (in.) | | 1 3/16 | |
| STEERING SYSTEM | Manual | Power | Power |
| Wheel Dia. (in.) | 16 1/2 | 15 | 15 |
| BRAKE SIZE (in.) | | | |
| Front Disc | 12 x 2.5 | 12.82 x 1.19 | 12 x 3.0 |
| Rear Drum | | 9.0 Dual | 13 x 3.5 |
| BOOSTER | | | |
| TIRES | (4) 8.75-16 SE | (6) 8.00-16 SD | (6) 8.00-16 SE |
| ELECTRICAL | | | |
| Alternator | 63-amp | | |
| Battery | 59-amp-hr | | |
| FUEL TANK (gal.) | | 22 Std.—36 Opt. | |
| ENGINE | | | |
| Std. Opt. | 225 S ¹ * 318 V8 ¹ , 360 V8 ¹ , 400 V8 ¹ , 440 V8 ¹ | 318 V8 ¹ 360 V8 ¹ , 400 V8 ¹ , 440 V8 ¹ | 360 V8 ¹ 440 V8 ¹ |
| TRANSMISSION | | 3-Speed Automatic** | |

¹Power steering with 15" dia. wheel available.

*Not available in California.

**3-speed manual available with 318 V8 engine in 127" wheelbase. CR300 (with standard 7700-lb. GVW only) for all states except California.

KaryVans offer a choice of six exterior colors:

- Mint Green Metallic
- Bright Canyon Red
- Light Tan
- Bright Tan Metallic
- White
- Bright Yellow.

See color selections on the back of this catalog.

You get Dodge front-section compact vans topped off by big, special bodies, available in lengths of 10, 12, and 15 feet. Bodies are designed for maximum usable space and fast, efficient cargo stowage and handling. They're all-welded, for strength, and galvanized in wheelhousing areas; other high-corrosion areas; a crowned two-piece roof helps prevent vibration. Standard "full swing" double rear doors or optional aluminum "roll up" doors are available to suit your cargo needs.

And Kary Vans take big cargoes, with a maximum payload rating of 5,085 pounds, maximum GVW of 11,500 pounds. Ask your Dodge Dealer about KaryVan, for compact van handling and low costs, plus the carrying capacity of bigger, more expensive trucks!

- Cargo capacity from 360 to 720 cubic feet
- Roll-up rear door, optional
- Easy access to rear compartment from driver's seat
- Load-protecting tie-down bars, optional
- Tight body sealing that protects cargoes
- Rear bumper with safety tread plate on upper surface.

1978 TRADESMAN SPECIFICATIONS

| MODEL | B100 TRADESMAN | | | B200 TRADESMAN | | B300 TRADESMAN | | | |
|---------------------------|-------------------------------|-------------------------------|-------------------------------|-------------------------------|-------------------------------|----------------------------|-------------------------|-------------------------|----------------------------------|
| | VAN | | | VAN & MAXIVAN | | VAN & MAXIVAN | | | MAXIVAN |
| GVW (lbs.) | 4600 | 5200 | 5500 | 6100 | 6400 | 6500 | 7000 | 7700 | 8200 [Ⓞ] |
| AXLE CAPACITY (lbs.) | | | | | | | | | |
| Front | 2800 | 2800 | 2800 | 3100 | 3100 | 3300 | 3300 | 3300 | 4000 |
| Rear | 2800 | 2800 | 3300 | 3300 | 3850 | 5500 | 5500 | 5500 | 6200 |
| SPRING RATING (lbs.) | | | | | | | | | |
| Front—(Small Engines) | 1340/1540 [Ⓞ] | 1340/1540 [Ⓞ] | 1340/1540 [Ⓞ] | 1540/1615 | 1540/1615 | 1570/1645 [Ⓞ] | 1570/1645 [Ⓞ] | 1645/1720 [Ⓞ] | 1725/1915 |
| Std. Opt. | — | — | — | 1615/1720 | 1615/1720 | 1645/1720 [Ⓞ] | 1645/1720 [Ⓞ] | 1720/1725 [Ⓞ] | 1725/1915 |
| Front—(400 & 440 V8s) | — | — | — | 1810/1930 | 1930 | 2020/2570 | 2020/2570 [Ⓞ] | 2570 | 3100 |
| Std. Opt. | 1170/1480 | 1480/1660 | 1660/1810 | — | — | — | — | — | — |
| Rear—Std., Opt. | — | — | — | — | — | — | — | — | — |
| BRAKES (in.) | | | | | | | | | |
| Front Disc | 11.75 x 1.25 | 11.75 x 1.25 | 11.75 x 1.25 | 11.75 x 1.25 | 11.75 x 1.25 | 12.82 x 1.19 | 12.82 x 1.19 | 12.82 x 1.19 | 12.82 x 1.19 |
| Rear Drum | 10 x 2.5 | 10 x 2.5 | 10 x 2.5 | 10 x 2.5 | 10 x 2.5 | 9.0 Dual | 9.0 Dual | 9.0 Dual | 9.0 Dual |
| Bouncer | — | — | 9.0 Dual | — | — | — | — | — | — |
| SHOCK ABSORBER DIA. (in.) | | | | | | | | | |
| Front—Std. | 1.0 | 1.0 | 1.0 | 1.0 | 1 3/16 | 1.0 | 1.0 | 1.0 | 1 3/16 |
| —Opt. | 1 3/16 | 1 3/16 | 1 3/16 | 1 3/16 | — | 1 3/16 | 1 3/16 | 1 3/16 | — |
| Rear—Std. | 1.0 | 1.0 | 1.0 | 1.0 | 1 3/16 | 1.0 | 1.0 | 1.0 | 1.0 |
| —Opt. | 1 3/16 | 1 3/16 | 1 3/16 | 1 3/16 | — | 1 3/16 | 1 3/16 | 1 3/16 | 1 3/16 |
| TIRE SIZE | E78-15B | F78-15B | G78-15B | H78-15B | L78-15C | 8.00-16.5C [Ⓞ] | 8.00-16.5D [Ⓞ] | 8.00-16.5E [Ⓞ] | 8.75-16.5E |
| | | | | | | | | | 8.75-16.5E-Fr. 9.50-16.5E-Rr. |
| WHEEL RIM SIZE (in.) | 5.50 | 5.50 | 5.50 | 5.50 | 6.50 | 6.00 | 6.00 | 6.00 | 6.75 |
| ENGINE—Std. | 225 Six | 225 Six | 225 Six | 225 Six | 225 Six | 225 Six | 225 Six | 225 Six | 225 Six |
| —Opt. V8s | 318, 360 | 318, 360 | 318, 360 | 318, 360, 400 [Ⓞ] | 440 [Ⓞ] | 318, 360, 400 [Ⓞ] | 440 [Ⓞ] | 440 [Ⓞ] | 440 [Ⓞ] |
| TRANSMISSION—Std. | 3-Spd. Manual | 3-Spd. Manual | 3-Spd. Manual | 3-Spd. Manual | 3-Spd. Manual | 3-Spd. Manual | 3-Spd. Manual | 3-Spd. Manual | 3-Spd. Manual |
| —Opt. | 4-Spd. Overdrive [Ⓞ] | 4-Spd. Overdrive [Ⓞ] | 4-Spd. Overdrive [Ⓞ] | 4-Spd. Overdrive [Ⓞ] | 4-Spd. Overdrive [Ⓞ] | 3-Spd. Automatic | 3-Spd. Automatic | 3-Spd. Automatic | 3-Spd. Automatic |
| STEERING—Std. | Manual | Manual | Manual | Manual | Manual | Manual | Manual | Manual | Manual |
| —Opt. | Power | Power | Power | Power | Power | Power | Power | Power | Power |

A—Ratings shown for 225 Six with 127" wb and all V8s; 225 Six ratings with 109" wb are 1240/1340.

B—Ratings shown for 109" wb; 127" wb ratings are 1540/1615.

C—Extra-heavy-duty spring (1725-lb. rating) also available.

D—Standard spring for Maxivan.

E—Tires shown for van; Maxivan tires are 8.00-16.5D.

F—Tires shown for van; Maxivan tires are 8.00-16.5E.

G—Not available with Maxivan in California.

H—Not available in California.

I—Not available with 109" wb.

J—Automatic transmission required with 225 Six for 7000- and 7700-lb. GVWs and with all engines for 8200- and 9000-lb. GVWs.

K—Available only with 225 Six or 318 V8.

L—Power steering required for Maxivan with 6400-lb. GVW.

M—Power steering required for 8200- (w/4000-lb. front axle) and 9000-lb. GVWs.

N—Also available with 4000-lb. front axle.

O—Ratings shown for van; Maxivan rating is 1725 lbs.

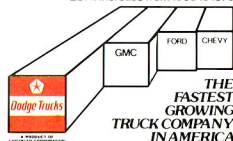
P—Tires shown for van; Maxivan tires are 8.75-16.5E.

14 exterior colors, including seven metallic paints.



Due to occasional printing irregularities, the colors shown may vary slightly from actual hues.

237% increase from 1966 to 1976



All product illustrations and specifications are based on authorized information. Although all descriptions are believed correct at publication approval, accuracy cannot be guaranteed. Some of the equipment shown on product illustrations is optional at extra cost. Dodge reserves the right to make changes from time to time, without notice or obligation, in prices, specifications, colors, and materials, and to change or discontinue models.