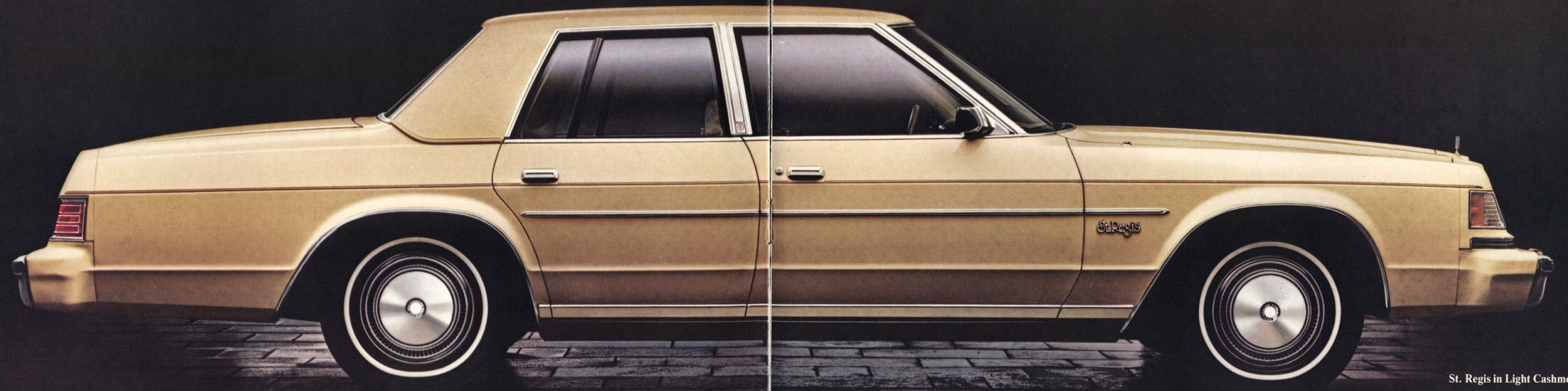


# 1980 DODGE ST. REGIS







# ST. REGIS. A SENSE OF STYLE.

It would be enough for most cars to look as extraordinary as St. Regis. The crisp, sculptured lines. The distinctive transparent headlamp covers. The flag-type outside mirrors. But the St. Regis story only begins with this elegant sense of style. The car is stylishly sensible as well.

Its ingenious weight-saving design has been achieved

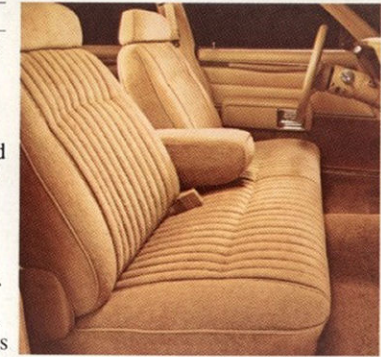
without compromise to its spacious six-passenger accommodations and family-size trunk.

It is also an automobile designed to bring back the pleasure of driving. The proven 225 Slant Six is standard. So are power steering and power front disc/rear drum brakes as well as TorqueFlite automatic transmission.

St. Regis. Total performance in a full-size car!

## Inside St. Regis.

Now consider the standard St. Regis interior. Split-back bench seat with fold-in center armrest of soft Verdi II cloth-and-vinyl (shown) or optional Oxford all-vinyl. Or optional individually adjustable 60/40 front seats with passenger-side recliner. A courtesy light under the instrument panel. Tinted glass. Add St. Regis' smooth, quiet ride and the picture is complete. Stylish. Sensible. Luxurious.

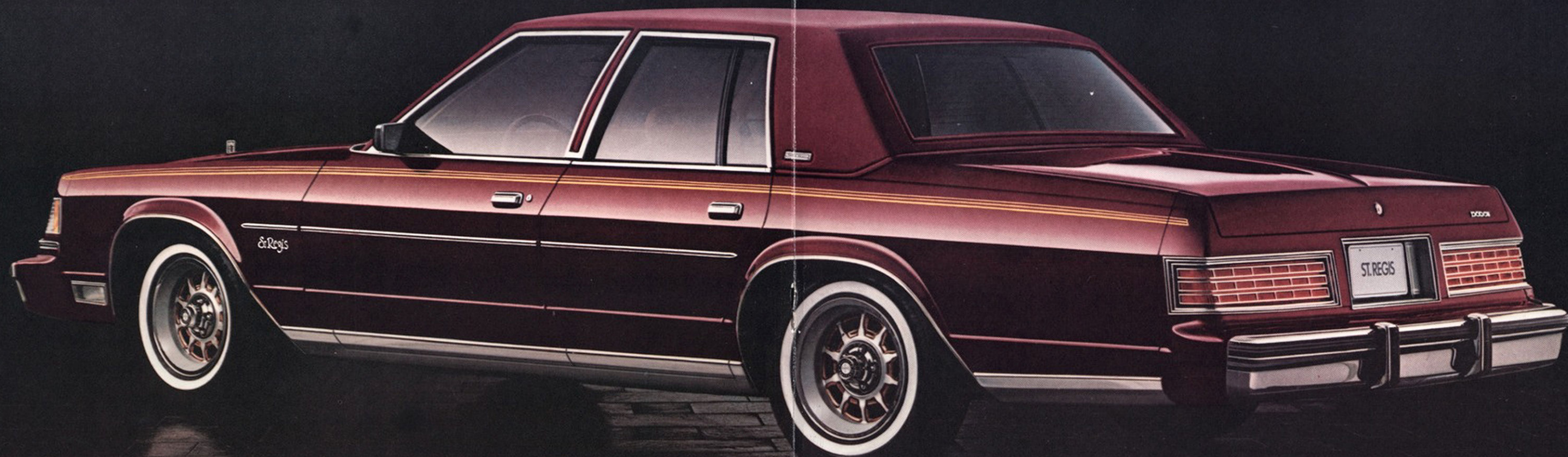


## About this catalog.

We have tried to make this catalog as complete as possible and we hope you find it useful. However, since the time of printing, some of the information you'll find here may have been updated. Also, some of the equipment shown or described throughout this catalog is available at extra cost. Your dealer has details, and you should ask him for current information before ordering.

St. Regis in Light Cashmere



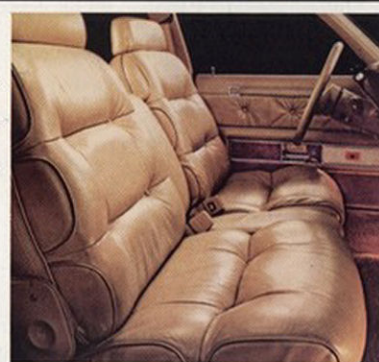


# ST. REGIS. THE SUBJECT IS LUXURY.

## St. Regis Touring Edition.

Introducing Dodge St. Regis with the Touring Edition Package. A car in the true grand touring tradition. With a host of features to set it apart. Padded full-vinyl roof with Touring Edition medallion inset into the rear post. Formal backlight. Unique body pinstriping. Cornering lights. Dual remote

chrome mirrors. Deluxe windshield wipers. Bright lower-body rear fender sill extensions. Wide white sidewall, steel-belted radial tires. Forged aluminum ten-spoke road wheels, color-keyed red or gold to the Touring Edition interior. Plush red or cashmere 60/40 leather seating (shown), individually adjustable in front with passenger-side recliner. Head restraints. Folding center armrest. Leather-



covered, color-keyed tilt steering wheel. Power windows with controls conveniently mounted on the driver's armrest. Door courtesy lights. All are standard in the St. Regis Touring Edition.

## Touring Edition Instrument Cluster.

Clarity of instruments and convenience of controls are leading assets. The cluster cover sports a Featherwood woodgrain-textured applique.





## ST. REGIS OPTIONS

### 1. Automatic Speed Control/Intermittent Wipers.

Automatic speed control and an intermittent washer/wiper system are optional features that can be incorporated into the multifunction, column-mounted control lever. The intermittent windshield washer/wiper has a delay mode that can be set for pauses of 2 to 15 seconds.

### 2. Sliding Sun Roof.

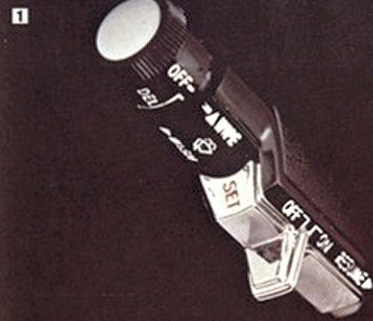
An electrically operated, tempered glass sun roof is color-coordinated in one of two tints, gray or bronze, and features an integral sun shade. The operating switch has been conveniently located on the instrument panel.

### 3. Tilt Steering Wheel.

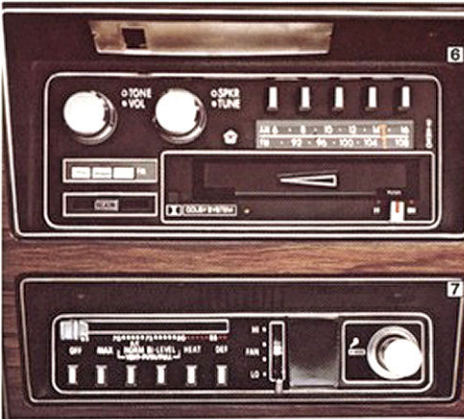
With this convenience option the steering wheel is adjustable to six different positions—one for your own personal driving preference.

### 4. Electronic Digital Clock.

The optional chronometer features vacuum fluorescent digital display and outstanding accuracy—to within a minute a month.



CHRYSLER CORPORATION'S PROTECTION PLAN



**5. 5/50 Protection Plan.** This optional service contract,\* the longest protection plan of any domestic manufacturer, covers major power train components for five years or 50,000 miles (whichever comes first) from the time you take delivery of your new St. Regis. The plan, which has a \$50 deductible per repair visit, also has an allowance for alternate transportation and towing. Ask your dealer for full details.

\*Provisions of plans vary with manufacturer.

**6. Radio Options: AM/FM Stereo with Cassette Player (shown).** This new radio option for 1980 includes the Dolby\* noise reduction system which minimizes tape hiss on Dolby-encoded cassette cartridges and also improves the dynamic range of Dolby-encoded FM broadcasts. (AM/FM stereo with eight-track tape or 40-channel CB transceiver also available.)

\*Dolby is a trademark of Dolby Laboratories.

**7. Air Conditioning.** Optional semi-automatic temperature control (shown) and manual air conditioning systems offer quiet performance, rapid cool-down rates and six instrument panel outlets.

Note: Ask your dealer for details regarding restrictions applicable to the later installation of air conditioning.

### 8. Illuminated Driver-Side Vanity Mirror.

Another new option for 1980. This lighted looking glass will ensure that you look as good as you feel behind the wheel of your St. Regis. (Passenger-side vanity mirror also available.)

### 9. Right Convex Outside Mirror.

One more St. Regis styling and convenience touch: a passenger-side convex remote-control mirror.



## 1980 READY-TO-ORDER FORM EXTERIOR PACKAGES

Certain models, packages and options are subject to specific restrictions, requirements and late availability. Consult your dealer for current ordering information.



☐ St. Regis Standard Exterior

St. Regis standard exterior. Includes bright hood edge, rear window, windshield, drip rail, belt, door surround, wheel opening and sill moldings. Deluxe wheel covers and white sidewall radial tires.



☐ St. Regis "Touring Edition" Package Exterior

St. Regis "Touring Edition" Package exterior. Includes all of the St. Regis features plus upper body pinstripes, sill molding extension, full padded vinyl roof, forged aluminum wheels and wide white sidewall steel-belted radial tires.

## INTERIOR TRIM



☐ Cloth-and-vinyl split-back bench seat with folding center armrest standard. Colors: midnight blue, teal green, heather, cashmere or red.



☐ Optional all-vinyl split-back bench seat with folding center armrest. Colors: midnight blue, teal green, heather, cashmere or red.



☐ Optional cloth-and-vinyl 60/40 individually adjustable seats with folding center armrest, passenger-side seat-back recliner. Colors: midnight blue, teal green, heather, cashmere or red.



☐ Optional all-vinyl 60/40 individually adjustable seats with folding center armrest, passenger-side seat-back recliner. Colors: midnight blue, teal green, heather, cashmere or red.



☐ Optional leather-and-vinyl 60/40 individually adjustable seats with folding center armrest, passenger-side recliner (included with Touring Edition). Colors: red or cashmere.

## ENGINES

### Federal 49-State

- ☐ 3.7-liter (225 CID) 1V, Slant Six (std)
- ☐ 5.2-liter (318 CID) 2V, V-8 (opt)
- ☐ 5.9-liter (360 CID) 2V, V-8 (opt)

### High Altitude

- ☐ 5.2-liter (318 CID) 4V, V-8 (opt)

### California

- ☐ 5.2-liter (318 CID) 4V, V-8 (opt)
- Since 1980 EPA estimates were unavailable at the time catalog was printed, ask your dealer about current information regarding mpg ratings.

## OPTIONAL PACKAGES

### Basic Group

- Air conditioning • AM radio • Remote control mirror, left • Light Package • Full vinyl roof • Deluxe windshield wipers • Vinyl body-side molding • Undercoating • Color-keyed deluxe seat belts

### Light Package

(Included in Basic Group)

- Trunk light • Glove box light • Ash receiver light • Map/courtesy light • Ignition switch time delay light • Rear door courtesy light switches • Door-ajar warning light • Fuel, temperature and alternator warning lights • Low washer fluid light • Hood and brake release light

### Heavy-Duty Package (Trailer Assist)

- High-capacity radiator • Heavy-duty suspension; heavy-duty rear springs, heavy-duty shock absorbers • Battery—500-amp Long-Life • Variable-load turn-signal flasher • Extra-wide wheel rims • Auxiliary transmission oil cooler • 3.2 axle ratio • Heavy-duty 65-amp alternator • Seven-wire harness with jumper • Power steering oil cooler

### Open Road Handling Package

- Firm-Feel suspension; heavy-duty sway bar, front and rear; heavy-duty shock absorbers; heavy-duty torsion

## TIRES AND WHEELS

- ☐ P195/75R15, glass-belted radial white sidewall (std)
- ☐ P205/75R15, steel-belted radial wide white sidewall (opt)
- ☐ P225/70R15, steel-belted radial wide white sidewall (opt)
- ☐ P205/75R15, Aramid-belted radial white sidewall with gold stripe (opt)

- ☐ Wheel covers—deluxe (std)
- ☐ Wheel covers—premier (opt)
- ☐ Wheel covers—premium turbine style (opt)
- ☐ Wheel covers—wire spoke (opt)
- ☐ Road wheels (four)—forged aluminum 10-spoke (opt)

bars; heavy-duty springs • Special Firm-Feel power steering • Extra-wide wheel rims • P225/70R15 wider white sidewall steel-belted radial tires

### Two-Tone Paint Package

Includes two-tone accent stripe. See back page for color combinations available.

### Touring Edition Package

• Padded full-vinyl roof with formal rear window • Touring Edition nameplate on rear pillar • Cornering lights • Wide sill molding rear extension • Dual remote chrome mirrors • Unique upper body

pinstripes • 60/40 leather-and-vinyl seats in red or cashmere • Unique door trim panels • Leather-covered steering wheel (red or cashmere) with tilt column • Deluxe windshield wipers with intermittent wipe • Power windows • Forged aluminum road wheels color-keyed in red or gold • P205/75R15 wide white sidewall tires (steel-belted radial) • Featherwood applique on instrument panel and all associated woodgrain areas. Offered in: Nightwatch Blue, Mocha Brown Metallic, Baron Red, Burnished Silver Metallic and Eggshell White

## OPTIONS

- ☐ Air Conditioning
- ☐ Air Conditioning—Automatic Temperature Control—V-8 only
- ☐ Automatic Speed Control
- ☐ Axle—Sure-Grip differential
- ☐ Battery—500-amp Long Life
- ☐ Bumper Guards—Front and rear
- ☐ Clock—Electronic digital
- ☐ Defroster—Rear window electrically heated (required on all vehicles registered in State of New York)
- ☐ Emissions Control System and Testing—Required on high-altitude engine
- ☐ Emissions Control System and Testing—Required on all vehicles registered in California
- ☐ Floor Mats, Carpet Accessory—Front
- ☐ Floor Mats, Carpet Accessory—Rear
- ☐ Gas Cap—Locking
- ☐ Glass—Clear windshield

- ☐ Headlamps—Halogen
- ☐ Horn—Three-note
- ☐ Illuminated Entry System
- ☐ Lights—Cornering
- ☐ Litter Container
- ☐ Maximum Engine Cooling
- Mirrors**
- ☐ Illuminated Vanity—Driver's side
- ☐ Illuminated Vanity—Passenger's side
- ☐ Remote Control—Left
- ☐ Remote Control—Left and convex right
- Moldings**
- ☐ Body-Side Protection—Vinyl
- ☐ Door-Edge Protectors
- ☐ Pedal Dress-Up Trim
- Power Assists**
- ☐ Antenna
- ☐ Deck Release—Electric (trunk lamp included)
- ☐ Door Locks

- ☐ Seat—Left 60/40 or bench
- ☐ Windows
- Radios and Speakers**
- ☐ AM
- ☐ AM/FM
- ☐ AM/FM Stereo
- ☐ AM/FM Stereo with CB Transceiver and Fixed Tri-Band Antenna
- ☐ AM/FM Stereo with Eight-Track Stereo Tape
- ☐ AM/FM Stereo and Cassette with Tape Player with Dolby\*
- \*Dolby is a trademark of Dolby Laboratories.
- ☐ AM/FM Stereo with Electronic Search-Tune
- ☐ Rear Speaker—Single
- ☐ Seat Belts—Deluxe color-keyed
- ☐ Shock Absorbers—Heavy-duty
- ☐ Spare Tire—Conventional

### Steering Wheels

- ☐ Leather-Covered, Two-Spoke
- ☐ Luxury
- ☐ Tilt
- ☐ Sun Roof, Glass—Power operated
- ☐ Suspension—Heavy-duty (heavy-duty rear springs and heavy-duty shock absorbers)
- ☐ Trunk Dress-Up
- ☐ Undercoating
- ☐ Vinyl Roof—Full
- ☐ Windshield Wipers—Deluxe with intermittent wipe feature



## STANDARD SPECIFICATIONS

Engine:	3.7-liter (225 CID) 1V Slant Six (49-state, federal)
Transmission:	TorqueFlite, automatic
Suspension:	Front—Torsion bars, independent with sway bar Rear—Multi-leaf
Axle Ratio:	2.9:1 (six-cylinder) 2.4:1 (V-8)
Tires:	P195/75R15 glass-belted radial white sidewall
Brakes:	Front—Disc, power Rear—Drum, power
Electrical:	Battery—370-amp Maintenance-Free (225) Slant Six; 325-amp (318) V-8; 430-amp Maintenance-Free (360) V-8 Alternator—65-ampere

## DIMENSIONS, WEIGHT, AND CAPACITY

Length:	220.2" (overall)
Width:	77.6" (overall)
Height:	54.5" (overall)
Wheelbase:	118.5"
Turning Diameter:	42.4' (curb-to-curb)
Curb Weight:	3,674 lbs (six-cyl)
Tread:	(Front/rear) 61.9"/62.0"
Trunk Capacity:	21.3 cu ft
Passenger Capacity:	Six
Fuel Capacity:	21 gallons

## STANDARD EQUIPMENT

Alternator—65-ampere standard  
Anti-Corrosion Protection  
Armrests—Front doors, rear doors and front-seat: center-mounted folding type  
Ash Receivers—Front and rear  
Battery Test Indicator  
Bumper Rub Strips—Front and rear  
Cigarette Lighter  
Cleaner Air System  
Directional Signals—Lane-change feature  
Electronic Ignition  
Electronic Spark Control System—5.2-liter (318 CID) 4V, V-8 and 5.9-liter (360 CID) 2V, V-8 engines  
Electronic Voltage Regulator  
Flashers—Hazard warning  
Floor Covering—Color-keyed cut-pile carpet in passenger compartment  
Fuel Tank—21 gallons  
Gauges—Temperature, alternator and fuel  
Glass—Tinted, all windows  
Glove Box Lock  
Headliner—Molded, color-keyed, cloth-covered and foam-backed  
Head Restraints—Right and left  
Heater and Defroster—Bi-level type

Hood Release—Inside  
Hood Silencer Pad  
Horns—Dual  
Lights—Courtesy light under instrument panel, brake system warning, transmission selector lever quadrant, front side marker lights, backup lights, dome light and front door switches for interior lights  
Mirrors—Inside rearview, day/night—Outside, manual left and right flag-type  
Power Steering  
Steering Wheel—Two-spoke with vinyl center pad with woodgrain trim  
Switch, Multifunction—Turn-signal control lever with integral headlamp dimmer control and windshield washer/wiper control  
Tire, Spare—Compact  
Warning Chimes—Seat belts  
Warning Tones—Headlamps "on" and key-in ignition  
Wheel Covers—Deluxe 15-inch  
Windshield Wipers—Two-speed with electric washers

## STANDARD SAFETY FEATURES

- Backup lights
- Brake system warning light (also serves as indicator when parking brake is applied)
- Combination lap-shoulder belts for the driver and right-front passenger, and lap belts for all other passengers
- Double ball-joint rearview mirror mount
- Dual braking system with separate brake fluid reservoirs in the master cylinder
- Dual throttle return springs
- Electric windshield washers and wipers
- Energy-absorbing bumper systems
- Energy-absorbing front seatbacks
- Energy-absorbing steering column
- Fade-resistant front disc brakes
- Front-seat head restraints
- Glare-reduction measures for windshield wipers, instrument panel and steering wheel
- Hazard warning flasher system
- Headlamp and wiper circuit breakers with automatic reset
- Ignition and steering column lock
- Inside and outside rearview mirrors
- Interlocking door latches
- "Key-left-in-ignition" chime
- Non-override door locks (except driver's door)
- Padded instrument panel and sun visors
- Recessed inside door release handles
- Reinforced windshield header and roof
- Resilient window crank knobs
- Rotary glove-box latch
- Safety-Rim wheels
- Side door beams
- Side marker lights and reflectors
- Turn signals with lane-change features

### Corrosion Protection

Chrysler Corporation's corrosion protection is unsurpassed in the industry. It includes the use of galvanized sheet metal panels, one of the best known methods of corrosion protection, as well as the seven-step dip-and-spray process. Both keep your St. Regis looking new for years to come.

Chrysler Corporation reserves the right to make changes at any time without notice or obligation, in prices, colors, materials, equipment or specifications and to change or discontinue models. Check your dealer for complete current information.

## COLORS

### Single-Tone Paints:

	
Light Heather Gray Metallic	Light Heather Gray
	
Frost Blue Metallic	Nightwatch Blue
	
Teal Frost Metallic	Teal Tropic Green Metallic
	
Crimson Red Metallic	Baron Red
	
Light Cashmere	Natural Suede Tan
	
Mocha Brown Metallic	Eggshell White
	
Black	Burnished Silver Metallic (Touring Edition only)

### Two-Tone Paint Combinations: (Upper/Lower)

	
Light Heather Gray/Light Heather Gray Metallic	Light Heather Gray/Baron Red
	
Frost Blue Metallic/Nightwatch Blue	Teal Frost Metallic/Teal Tropic Green Metallic
	
Natural Suede Tan/Mocha Brown Metallic	

Test drive total performance in a full-size car. Dodge St. Regis.

Buy or Lease a Dodge St. Regis



MOPAR parts are engineered by Chrysler Corporation for use in your new Dodge. When replacement is necessary, be sure to specify MOPAR parts. Used by professional mechanics all over the world.

Litho in U.S.A.