

# 1981 PLYMOUTH GRAN FURY





## The tradition of the full-size car

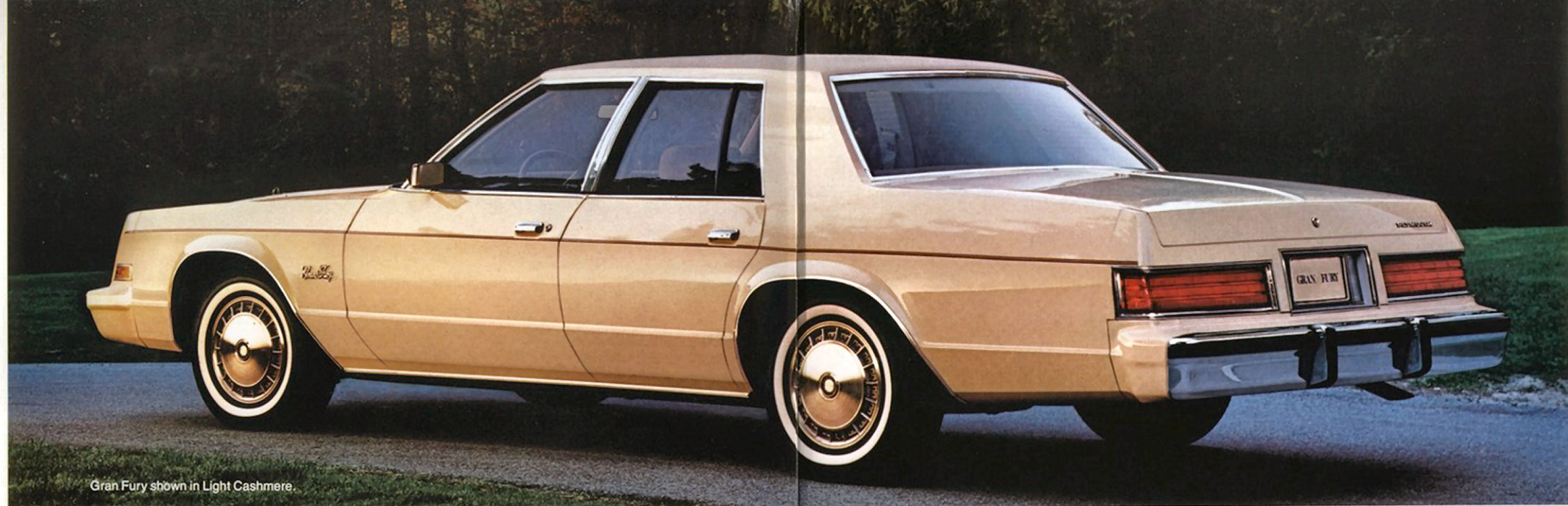
The 1981 Gran Fury is a "full-size" car. It was designed as a full-size car. Designed with the aid of computers. Constructed of corrosion-resistant materials. Checked and rechecked through every stage of assembly. Fully tested. Fully qualified in the Chrysler tradition. In fact, The New Chrysler Corporation is so sure of Gran Fury's quality engineering and construction, it offers a 30-Day/1,000-Mile (whichever comes first) Satisfaction Money-Back Guarantee that's available at many dealers. See page 4 of this catalog for full details.

At The New Chrysler Corporation, we believe that there are a lot of people who need and want a car with full-family space... six-passenger space. Family space inside, and a commodious 21.3-cubic-foot trunk space. That doesn't mean we've turned our backs on the times. There is a thing called practicality that we are very much aware of. Gran Fury offers that with a very sensible standard 3.7-liter Slant Six engine that has the proven power you and Gran Fury need for safety and performance.

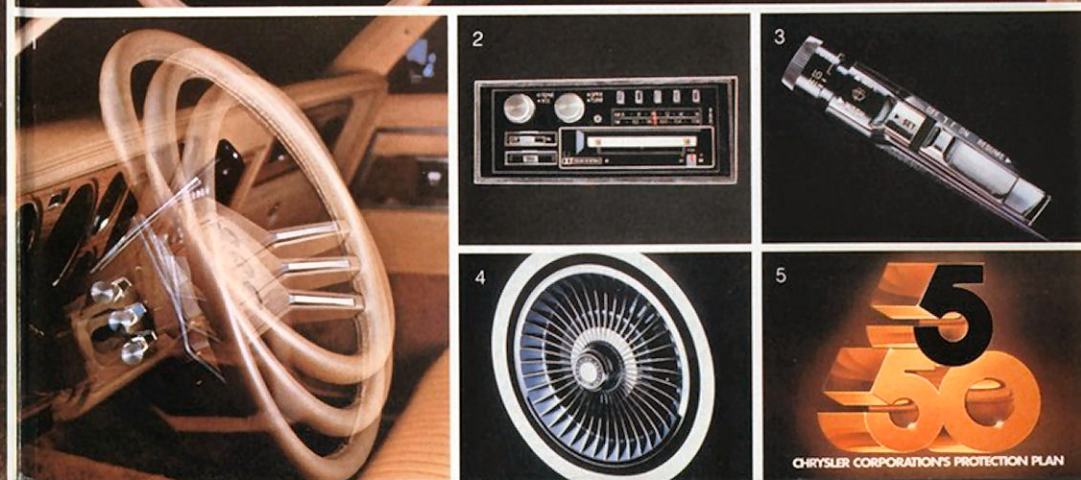
If you feel the need of more power, there is an optional 5.2-liter V-8 engine which comes in a two- or four-barrel model. What is not optional is the Gran Fury suspension system. Like quality, it's standard. The torsion bars on the front and the leaf springs on the rear balance this car very nicely, and the antisway bar up front helps you stay in command and in control.

The standard transmission is the tried-and-respected Chrysler Torque-Flite. The tires are glass-belted radial white sidewalls, and they work very comfortably with Fury's power steering, power front disc brakes and rear drum brakes.

Shown here is the standard Cashmere cloth bench seat.



Gran Fury shown in Light Cashmere.



## Selected options

The Gran Fury instrument panel illustration shows the following options: luxury steering wheel with leather-wrapped rim; automatic speed control; AM/FM stereo with CB transceiver; air conditioning and digital clock.

**1. Tilt Steering Column.** This steering column can be adjusted to six different positions. Select the most comfortable steering angle for you. You'll also find that you can move the wheel up out of the way for extra room when entering or exiting the car.

**2. AM/FM Stereo Radio with Cassette Player.** This radio option includes the Dolby<sup>®</sup> noise reduction system which minimizes hiss on Dolby-encoded cassette cartridges and FM broadcasts. So you can enjoy not only your favorite stations and music but also the exceptional clarity of this special process.

\*Dolby is a trademark of Dolby Laboratories, Inc.

**3. Automatic Speed Control.** Just the convenience you need on long trips. Select the speed you want, set it and forget it. Speed will be maintained automatically, so you can switch your driving position, rest your right foot and enjoy the improved mileage that comes with a constant speed.

**4. Turbine Style Wheel Cover.** This wheel covering is a kaleidoscopic blur of fins when the car is in motion and a piece of modern sculpture when at rest. You'll love what these wheel covers can do to dress up a new Gran Fury.

**5. 5/50 Protection Plan** is an optional service contract. It's the longest protection plan\* of any domestic manufacturer and covers major power train components for five years or 50,000 miles (whichever comes first) from the time you take delivery of your new Plymouth. Coverage begins after the limited warranty expires. The plan, which has a \$50 deductible per repair visit, also has an allowance for alternate transportation and towing. Ask your dealer for full details, including plan availability in your area.

\*Provisions of plans may vary with manufacturer.

**About this catalog.** We have tried to make this catalog as complete as possible. And we hope you find it useful. However, since the time of printing, some of the information you'll find here may have been updated. Also, some of the equipment shown or described throughout this catalog is available at extra cost. Your dealer has details and you should ask him for current information before ordering.



# 1981 READY-TO-ORDER FORM

## EXTERIOR TRIM



### Gran Fury

Exterior includes bright hood edge, rear window, windshield, front and center pillar, belt, door upper and wheel opening moldings, dual manual outside mirrors, hubcaps and white sidewall radial tires.

## INTERIOR TRIM



□ Standard cloth-and-vinyl bench seat. Colors: Dark Blue, Cashmere.



□ Optional all-vinyl split-back bench seat with center armrest. Colors: Dark Blue, Cashmere, Red.



□ Optional cloth-and-vinyl 60:40 individually adjustable seats with folding center armrest, passenger-side seatback recliner. Colors: Red, Dark Blue, Cashmere.

## COLORS



NOTE: Due to occasional printing irregularities, the colors shown may vary slightly from actual hues. See your Plymouth dealer for accurate color chips.

## OPTIONS

- Air Conditioning—Manual
- Air Conditioning—Semi-automatic\* temperature control (V-8 only)
- Automatic Speed Control
- Axle—Sure-Grip differential
- Battery—500-amp Long-Life Maintenance-Free
- Bumper Guards—Front and rear
- Bumper Protective Rub Strips—Front and rear
- Clock—Electronic digital
- Defroster—Rear window electrically heated (required on all vehicles registered in state of New York)
- Emissions Control System and Testing—Required on all vehicles registered in California
- Engine Cooling Package
- Floor Mats—Carpet accessory, front
- Floor Mats—Carpet accessory, rear
- Gas Cap—Locking
- Glass—Clear windshield (no charge)
- Headlamps—Halogen
- \*See Engine Cooling Package
- Horn—Three-note
- Illuminated Entry System
- Lights—Cornering
- Lifter Container
- Mirrors
- Illuminated Vanity—Driver's side
- Illuminated Vanity—Passenger's side
- Remote Control—Left
- Remote Control—Left and right convex
- Moldings
- Body-Side—Protective vinyl, color-keyed
- Door-Edge Protectors
- Pedal Dress-Up Trim
- Sill
- Power Assists
- Antenna—Not available with CB
- Deck Release—Electric (trunk lamp included)
- Door Locks
- Seal—Left side, or bench
- Windows

### Radios and Speakers

- AM
- AM/FM
- AM/FM Stereo
- AM/FM Stereo and Cassette Tape Player with Dolby\*
- AM/FM Stereo with CB Transceiver and Fixed Tri-Band Antenna
- AM/FM Stereo with Eight-Track Stereo Tape Player
- AM/FM Stereo with Electronic Search-Tune
- Dual Front Speakers—Prewired for stereo
- Rear Speaker—Single
- \*Dolby is a trademark of Dolby Laboratories, Inc.

### Steering Wheels

- Luxury—Two-spoke
- Luxury—Two-spoke, leather-wrapped rim
- Tilt Column

- Stripes—Body-side
- Sun Roof—Glass, power operated
- Suspension—Heavy-duty (heavy-duty rear springs and shock absorbers)

### Tires

- P205/75R15—Steel-belted radial wide white sidewall
- P225/70R15—Steel-belted radial wide white sidewall
- Trunk Dress-Up (includes spare tire cover—carpeted)
- Undercoating

### Wheels and Wheel Trim

- Road Wheels—Forged aluminum (opt) (four)
- Wheel Covers—Deluxe
- Wheel Covers—Premier
- Wheel Covers—Premium
- Wheel Covers—Wire
- Windshield Wipers—Deluxe with intermittent wipe feature

### Corrosion Protection

Chrysler Corporation's corrosion protection is among the best in the industry. It includes the use of galvanized sheet metal panels, one of the best known methods of corrosion protection, as well as the seven-step dip-and-spray process. Both keep your Gran Fury looking new for years to come.

## STANDARD EQUIPMENT

	Gran Fury
Battery Test Indicator	S
Brakes—Front power disc	S
Braking System—Dual, with separate brake fluid reservoirs in master cylinder	S
Bumper Systems—Energy-absorbing	S
Carpets—Front and rear	S
Chimes—Warning: headlights-on	S
Cigarette Lighter	S
Circuit Breakers—With automatic reset: for headlamps and wipers	S
Engine Coolant Reserve System	S
Flasher System—Hazard warning	S
Glass—Tinted, all windows	S
Hood Release—Inside	S
Hood Silencer Pad	S
Horns—Dual	S
Hubcaps	S
Ignition System—Electronic	S
Instrument Panel and Sun Visors—Padded	S
Lights—Backup, dome	S
Lights and Reflectors—Side marker	S
Lock—Glove box	S
Lock—Ignition and steering column	S
Mirror—Inside, day/night	S
Mirrors—Outside, dual: manual	S
Moldings—Belt, drip rail and wheel opening	S
Seat—Cloth-and-vinyl bench	S
Seat Belt Reminder System	S
Seat Belts—Combination lap-shoulder for driver and right-front passenger	S
Steering—Power	S
Steering Wheel—Two-spoke with horn switches in spokes	S
Suspension—Front torsion bar with sway bar suspension, rear	S
Tires—Glass-belted radial whitewall	S
Transmission—TorqueFlite	S
Turn Signals—With lane-change feature	S
Wheels—Safety-Rim	S
Windshield Washers and Wipers—Electric	S
S—Standard.	

## OPTIONAL PACKAGES

- **Basic Group**
  - Air conditioning, manual control
  - AM radio • Remote control mirror, left
  - Light Package • Deluxe windshield wipers • Vinyl body-side molding • Undercoating
- **Light Package** (Included in Basic Group)
  - Trunk light • Glove box light • Ash receiver light • Map courtesy light • Ignition switch time delay light • Door ajar warning light • Fuel, temperature and alternator warning lights • Washer fluid light • Hood and brake release light • Rear door light • Under-hood light
- **Heavy-Duty Package** (Trailer Assist)
  - (Requires: 4-bbl V-8 engine, P225/70R15 steel-belted radial tires, conventional spare tire, Sure-Grip differential)
  - Engine Cooling Package • Heavy-duty suspension: heavy-duty rear springs, heavy-duty shock absorbers • 500-amp Long-Life Maintenance-Free battery • Variable load turn signal flasher • Extra-wide wheel rims • Auxiliary transmission oil cooler • Performance 3.2 axle ratio • Heavy-duty 65-amp alternator • Seven-wire harness with jumper • Power steering oil cooler
- **Open Road Handling Package** (V-8 engine only)
  - Firm-Flex suspension: heavy-duty sway bar front and rear; heavy-duty shock absorbers; heavy-duty torsion bars; heavy-duty springs • Special Firm-Flex power steering • Extra-wide wheel rims • P225/70R15 steel-belted radial wider white sidewall tires
- **Premium Speaker System**
  - All stereo sound systems on Gran Fury can be ordered with optional Premium Speaker System. This system—featuring two front and two coaxial rear speakers—reproduces stereo programs and tapes with dramatic realism. A special 30-watt (15 watts per channel) rear amplifier with two piezo electric two-way coaxial rear speakers gives the stereo an exciting new dimension. Just push the power level switch button on the instrument panel to cut in the rear amplifier and coaxial speakers. An LED indicator light glows when the rear amplifier is functioning. When the switch is not on, the rear speakers are powered by the amplifier that drives the front speakers.

## STANDARD SPECIFICATIONS

ENGINE:	3.7-liter (225 CID) one-barrel Slant Six (49-state)
TRANSMISSION:	TorqueFlite automatic
SUSPENSION:	Front—Independent with torsion bars Rear—Multileaf
AXLE RATIO:	2.9:1 Six 2.2:1 2-bbl V-8 2.4:1 4-bbl V-8
BRAKES:	Front—Disc, power Rear—Drum, power
ELECTRICAL:	Battery—430-amp, Maintenance-Free Alternator—60-amp
TIRES:	P195/75R15 glass-belted radial white sidewall

## DIMENSIONS, WEIGHT AND CAPACITY

LENGTH*	220.2"
WIDTH:	77.6"
HEIGHT:	54.5"
WHEELBASE:	118.5"
TURNING DIAMETER:	42.4'
CURB WEIGHT (6-cyl):	3,595 lbs
TREAD (front/rear):	61.9"/62"
TRUNK CAPACITY (est):	21.3 cu ft
PASSENGER CAPACITY:	6
FUEL CAPACITY:	21 gallons

\*Includes bumper guards.

## ENGINES

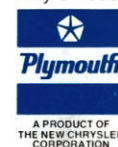
TYPE	DISPLACEMENT	BORE & STROKE	COMPRESSION RATIO	CARBURETION	HORSEPOWER		TORQUE	
					SAE NET	@ RPM	SAE NET	@ RPM
<b>Federal</b>								
□ 6-cyl OHV	3.7-liter (225 cu in.)	3.40" x 4.12"	8.4:1	1-bbl	85 hp @ 3,600	165 lb-ft @ 1,600		
□ V-8 OHV	5.2-liter (318 cu in.)	3.91" x 3.31"	8.5:1	2-bbl	130 hp @ 4,000	230 lb-ft @ 2,000		
□ V-8 OHV	5.2-liter (318 cu in.)	3.91" x 3.31"	8.5:1	4-bbl	165 hp @ 4,000	240 lb-ft @ 2,000		
<b>California</b>								
□ V-8 OHV	5.2-liter (318 cu in.)	3.91" x 3.31"	8.5:1	4-bbl	165 hp @ 4,000	240 lb-ft @ 2,000		

All product illustrations and specifications are based on authorized information. Although descriptions are believed correct at publication approval, accuracy cannot be guaranteed. Some of the equipment shown on product illustrations is optional, at extra cost. Chrysler Corporation reserves the right to make changes from time to time without notice or obligation, in prices, specifications, colors and materials and to change or discontinue models. See your dealer for the latest information.

**30-Day Satisfaction Money-Back Guarantee.** If you are not completely satisfied with your new Gran Fury bring it back in good condition with no metal damage. Once your dealer receives clear title we'll refund your money less finance and insurance charges and less the difference, if any, between the trade-in refund value (as shown on the "Trade-In Refund Agreement") and the trade-in value allowed on the retail sales contract. One refund per customer. See your dealer for details.

Litho in U.S.A. Form No. 81-005-1012 8/80 (250M)

Buy or lease a Plymouth Gran Fury.



MOPAR parts are engineered by Chrysler Corporation for use in your new Plymouth. When replacement is necessary, be sure to specify MOPAR parts. Used by professional mechanics all over the world.

A PRODUCT OF THE NEW CHRYSLER CORPORATION