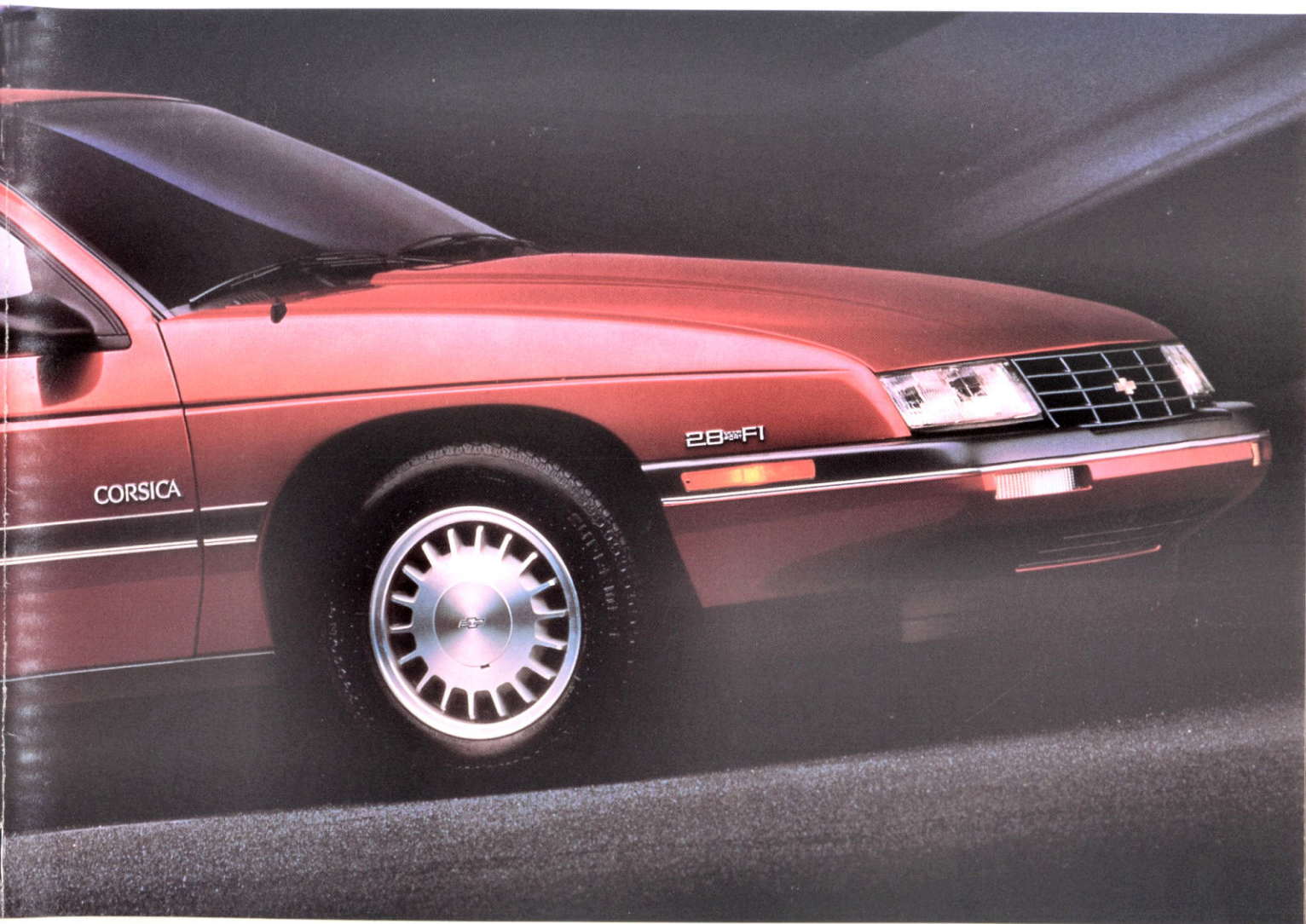


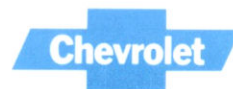
# 1988 FAMILY CARS



*CORSICA*

*CELEBRITY*

*CAPRICE*



The world's most successful cars.



Forgive us if  
we sound  
a bit immodest,  
but it's time  
we blew  
our horn.



## Honk.

Back in 1911 when Louis Chevrolet's first car came along, along with it came the promise of a lot of heartfelt memories.

While most of us don't remember things like the Chevy Classic Six or the Stovebolt Six, a good many of us remember the first time we set eyes on a Vette or an Impala or a two-tone Bel Air.

A lot of us remember the first

time we rode in a Chev.

Better yet, a lot of us remember learning how to drive one.

In thinking about it, Chevrolet is quite unique in being able to touch the good things we remember about our lives.

Granted, memories are only intangibles.

But in a way they've helped make Chevrolets what they are today.

The world's most successful cars. Honk.



## Honk.

Modesty aside, we're thrilled to tell you that Chevrolet has now sold more than 90 million cars around the world.\*

Give or take a few.

Of course, some say that being big doesn't necessarily mean being best.

In Chevy's case, we like to believe this just isn't so.

Allow us to toot our horn a little more and tell you why. Honk, honk.

## Honk.

Back in 1911, Louis Chevrolet started a car company with the notion that you could build a high-quality car without a really high price.

Some things never change.

From a quality point of view, run your hand along the edge of a Chevrolet roof and you'll find no exposed seams that can be vulnerable to corrosion.

In a lot of our cars you'll find no seams in the door frames, either.

And in most of them you'll find all this, too: We've replaced the carburetor



with fuel-injection for better fuel economy and quicker response.

The distributor is gone in favour of computerized ignition to prevent engine knock and ping.

There's a single-belt, accessory drive system that's designed to last up to 160,000 kilometres.

There are two-sided galvanized steel panels to help keep your car looking new for years.

Batteries have the terminals on the side rather than the top so there's no residue build-up.

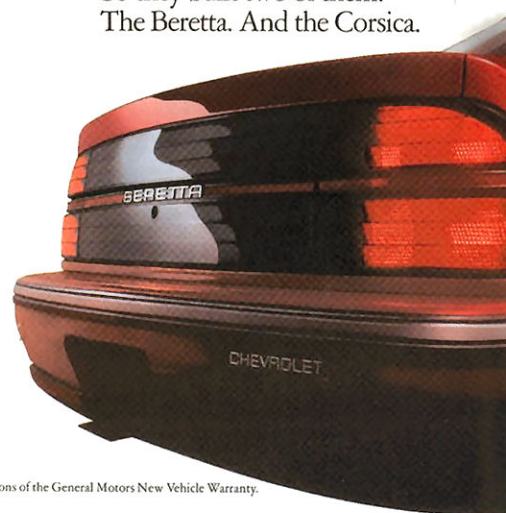
And there are front disc brakes with audible wear sensors. Door hinges that have two built-in stops rather than one. And a counter-balanced trunk lid that pops open rather than having to be lifted open. (See, it's the little things that count.)

Honk, honk, honk.

## Honk.

A while ago, our engineers and designers had this idea that you could build a finely-crafted, spirited, aerodynamically-designed automobile for a fraction of the price of many imports.

So they built two of them. The Beretta. And the Corsica.



From Road and Track: "In the handling department, we found the Beretta a profoundly startling package."

From Ward's Auto World on the Beretta:

"Best looking small car, bar none."

And from Motor Trend on the Corsica:

"Our test car bore eloquent testimony to the efficacy of these (Chevrolet's) sophisticated construction techniques displaying fit and finishes of commendably high calibre throughout."

Enough said.

Honk, honk, honk, honk.

## Honk.

In the interest of economy - both yours and ours - Chevrolet has one of the largest selections of small cars in the world.

Add them all up and there are 18 different models in our Sprint, Cavalier, Corsica, Camaro and Beretta series.

How nice.



(The Sprint, by the way, gets an unbeatable 4.9 L/per 100 km or 58 mpg\*\* and is just about the lowest priced car in its class.)

There's every kind of car design imaginable, as well.

Like hatchbacks, wagons, coupes, sedans, convertibles and street machines.

And so honk, honk, honk, honk, honk.



## Honk.

As we honk on about our new cars, we'd also like to do a little honking about our used cars.

Specifically the '84 Chevrolet Celebrity.

While Chevrolets have terrific re-sale value, this Celebrity has the highest resale value of any mid-size car.†

It's little wonder then that the Chevy Celebrity is North America's best-selling mid-size car.††

Honk, honk, honk, honk, honk, honk.

## Honk.

We figure if we build one of the best cars in the world, we may as well have one of the best warranty packages to go along with it.

There's a 1-year 20,000 kilometre warranty that covers everything from the headlights to the taillights.††† There's a 6-year 100,000 kilometre power-train

warranty.††† And a 6-year 160,000 kilometre rust-perforation warranty.†††

Now if you take all this, plus all the things you've read about to this point, you'll now know why Chevrolet has the world's most successful cars.

So in summary, we'd only like to say this:

Honk, honk, honk, honk, honk, honk, honk.

The world's most successful cars.

\*Based on accumulated total of cars built by or for Chevrolet Division in North America for world-wide consumption 1911 through 1986.

\*\*Based on 1987 Transport Canada test methods, combined rating for base Sprint equipped with the 1.0 L engine and 5-speed manual transmission. Your actual mileage may vary.

†Based on average Canadian Black Book data for a 3-yr old Celebrity (1984 model) versus 1984 mid-size competitors and published July 15, 1987.

††Based on MVMA sales data for Celebrity versus any mid-size competitor from introduction in Feb. 1982 to the end of June, 1987. †††See your Dealer for limited terms and conditions of the General Motors New Vehicle Warranty.



# CHEVY FAMILY CARS

## Table of Contents

|  | Page  |
|--|-------|
| <b>CORSICA</b>                           |       |
| Models . . . . .                         | 6/7   |
| Standards . . . . .                      | 8/9   |
| Interiors . . . . .                      | 10/11 |
| LT . . . . .                             | 12/13 |
| Engineering . . . . .                    | 14/15 |
| <b>CELEBRITY</b>                         |       |
| Models . . . . .                         | 16/17 |
| Standards . . . . .                      | 16/17 |
| Eurosport . . . . .                      | 18/19 |
| Interiors . . . . .                      | 20/21 |
| Engineering . . . . .                    | 22/23 |
| <b>CAPRICE</b>                           |       |
| Models . . . . .                         | 24/25 |
| Brougham . . . . .                       | 24/25 |
| Wagon . . . . .                          | 24/25 |
| Interiors . . . . .                      | 26/27 |
| Wheels . . . . .                         | 28    |
| Audio Equipment . . . . .                | 29    |
| Colours . . . . .                        | 29    |
| Corsica Features and Options . . . . .   | 30    |
| Caprice Features and Options . . . . .   | 31    |
| Celebrity Features and Options . . . . . | 32/33 |
| Additional Information . . . . .         | 34    |

Cover: Corsica Sedan

Compact, mid-size, and full-size—there's a family Chevrolet in each category. That's because Chevy understands that different families have different automotive needs. As you study this catalogue, you'll discover that each of these vehicles offers specific attributes. And each delivers the quality and value you expect from Chevrolet.



Corsica Sedan

**Corsica**  
The winds of change are blowing. And from that powerful force has come a new generation of family cars—Corsica, by Chevrolet.

**The Sleek Shape of Four Doors**  
Corsica is the most aerodynamic sedan in Chevrolet history. With flush-lens halogen headlamps, semi-flush side glass, flush door handles, and an aircraft-inspired door-into-roof design, Corsica represents a clean-lined departure from traditional four-door styling.

**Impressive Attributes**  
Many of Corsica's basic features are items you'd expect to find only in a larger, more costly automobile:

- Ample room for five passengers, with up to 2718 litres (96 cu. ft.) of interior space.
  - A large, 382 litres (13.5 cu. ft.) trunk.
  - A smooth, comfortable ride you'll appreciate on trips of any length.
- Technical Basics**  
In designing Corsica, special attention was given to providing "big-car" features at a Chevrolet price. These include:
- Front drive for good traction especially in winter and efficient space utilization.
  - 2.0 Litre 4-cylinder engine with Electronic Fuel Injection standard.

- Optional 2.8 Litre V6 with Multi-Port Fuel Injection.
  - 5-speed floor-mounted transmission standard, with an optional 3-speed automatic available.
  - Power rack-and-pinion steering.
  - Power front disc/rear drum brakes with audible wear sensors.
  - Unitized body/frame construction.
- Corsica Models**  
Choose the standard Corsica, an attractive, well-equipped vehicle. Or there's the performance-oriented package called LT Corsica that creates an exciting sport sedan. Either way, Corsica is proof the family sedan of tomorrow is here today.



Corsica LT Sedan





Corsica communicates with straightforward, easy-to-read analog instrumentation. Also included in the standard package are AM/FM stereo sound system (available cassette shown) with digital clock, side window defoggers, headlamps-on warning tone, spacious lockable sliding drawer-like glove box with lamp, and a power flow-through ventilation system with four instrument panel outlets.

**Note:** Instruments are metric in Canada.

#### **Corsica Standards**

The finely sculpted Corsica you see below is completely standard. Surprised?

While designing Corsica, Chevrolet conducted extensive research to learn what today's car buyers expect in an automobile. Corsica's high level of standard content is the result.

#### **Impressive Features**

Every Corsica includes:

- Protective wide body side mouldings.
- Steel-belted radial tires.
- Dual Sport mirrors, with driver's side remote adjustment.
- Full wheel covers

- Base coat/clear coat paint, for a deep, "wet-look" shine.

- Flush-lens halogen composite headlamps.

- Chevrolet's high level of corrosion protection includes two-sided galvanized steel for most panels.

#### **Lively Performance**

The standard 2.0 Litre 4-cylinder with Electronic Fuel Injection delivers surprising energy over the road. Other refinements which help deliver Corsica's quiet cruising attitude are a serpentine single belt-drive that never needs adjustment, and a computer-controlled ignition system that eliminates "ping" and the need for timing adjustments. Routine maintenance is made easier, thanks to

an uncomplicated layout and clearly labeled systems. Completing the powertrain is a smooth 5-speed manual transmission. Working together, engine and transmission move Corsica through its paces with the alacrity you expect from a contemporary car.

#### **Designed-in Safety**

For the security of you and your family, Corsica has been engineered with front and rear three-point shoulder harnesses, energy-absorbing instrument panel and steering wheel and a door-lock design that provides added protection from theft.

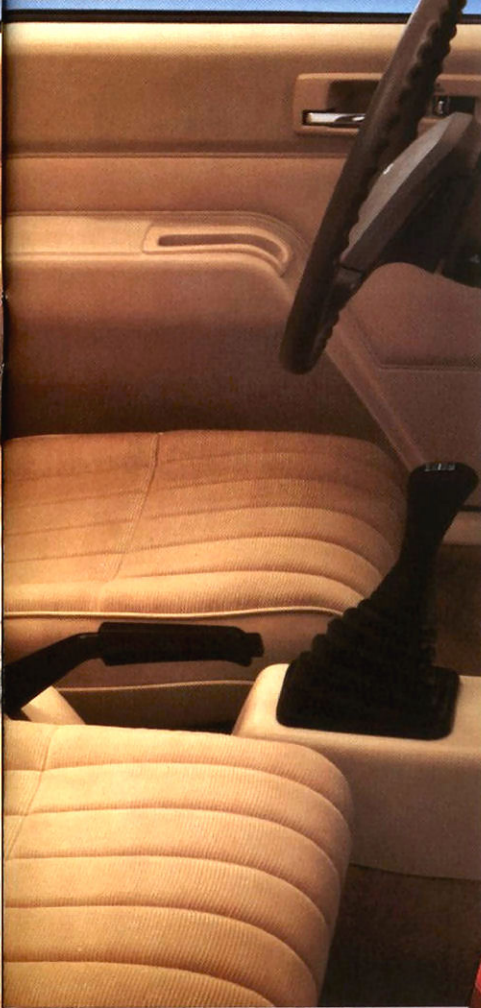
Value, performance, room and style...at a Chevrolet price. That's the philosophy behind Corsica.

CORSICA



Corsica Sedan





Standard Corsica interior

CORSICA

#### Corsica Interiors

Think of Corsica's interior as your second living room. It's comfortable, spacious, and nicely furnished: two easy chairs up front, a matching three-seat sofa in back. That adds up to space for five, and there's plenty of head, hip, and leg room all around. And with Corsica's large glass area, sloping hood line, and thin pillar design, everybody aboard is afforded an expansive view of the world going by.

#### Comfort Built In

Just look at these standard features:

- Full-foam seat construction.

- Front and rear floor carpeting.
- Reclining front bucket seats with adjustable head restraints.
- Four-way mechanical adjustment on driver's seat.
- Unique tri-mount front seats for excellent rear foot room.
- Door trim panels with cloth inserts.
- Visors fold flush with headliner.
- Driver's side storage at left of instrument panel.
- Easy-to-use pod mounted controls.

The well-planned Corsica interior. The excellence built right in.

| Interiors                            | Corsica | Corsica LT |
|--------------------------------------|---------|------------|
| Cloth w/reclining front bucket seats | S       | S          |
| Custom CL Cloth                      | A       | A          |

S-Standard. A-Available



Corsica's optional CL Custom Cloth package adds plush fabrics and special trim. Seats are more deeply contoured and include four-way mechanical adjusters for both front bucket seats. Seats are more deeply contoured and include four-way mechanical adjusters for both front bucket seats. Seats are more deeply contoured and include four-way mechanical adjusters for both front bucket seats. Seats are more deeply contoured and include four-way mechanical adjusters for both front bucket seats.





Corsica LT

CORSICA

LT adds more flair to Corsica, with standard gauge package. Full instrumentation—tachometer, voltmeter, temperature and oil pressure gauges, and trip odometer—keeps you constantly informed. And every LT features a Custom steering wheel (shown here with optional hub-mounted Cruise Control) and special LT identification.



Note: Instruments are metric in Canada

#### Corsica LT

Now comes the LT option, with black-out trim, 14" styled wheels and special identification, turning the stylish Corsica into a spirited sport sedan. The tuned sport suspension and 5-speed manual transmission can be teamed with either the standard 2.0 Litre engine or the optional 2.8 Litre V6 with Multi-Port Fuel

Injection. Either way, this is one sedan that's eager to get started and move out.

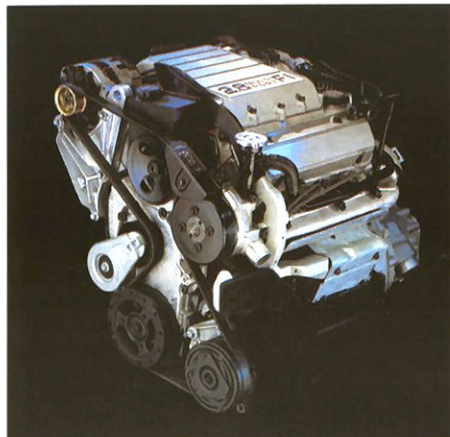
#### LT Equipment

Included in the LT package are:

- Sport suspension with faster steering ratio, higher spring rates, specially tuned shocks, and rear stabilizer bar.

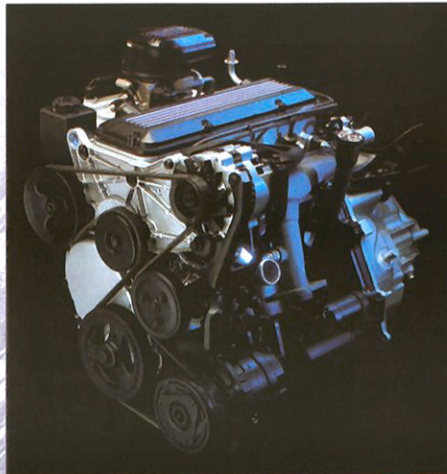
- 14" styled steel wheels and P195/70R-14 steel belted radials.
- Black body side mouldings, grille emblem, side pillar trim and nameplates, all with red accent inserts.
- Custom steering wheel.
- Gauge package with tachometer.





#### 2.8 Litre V6

The optional V6 with Multi-Port Fuel Injection transforms Corsica into a true performance sedan. Features include aluminum cylinder heads and rocker covers; contemporary combustion chambers; large valve ports; high-compression; computer-controlled ignition, and serpentine single-belt accessory drive. An electric spark sensor adapts to differences in fuel octane, altitude, temperature, and humidity. Horsepower: 130 at 4,700 RPM. Torque: 160 at 3,600 RPM.



#### 2.0 Litre L4 Engine

Standard on Corsica, this modern powerplant delivers smooth, quiet performance. Design features include a lightweight aluminum cylinder head and rocker cover, cylinder head ports and combustion chambers shaped for impressive volumetric efficiency. Computer-controlled coil ignition calculates exact spark timing, virtually eliminating engine "knock." The single-belt accessory drive never needs tensioning. Horsepower: 90 at 5,600 RPM. Torque: 108 at 3,200 RPM.

Two-sided galvanized steel on most exterior panels contributes to corrosion protection.

Generous glass area all around.

Composite-type flush-mounted halogen headlamps.

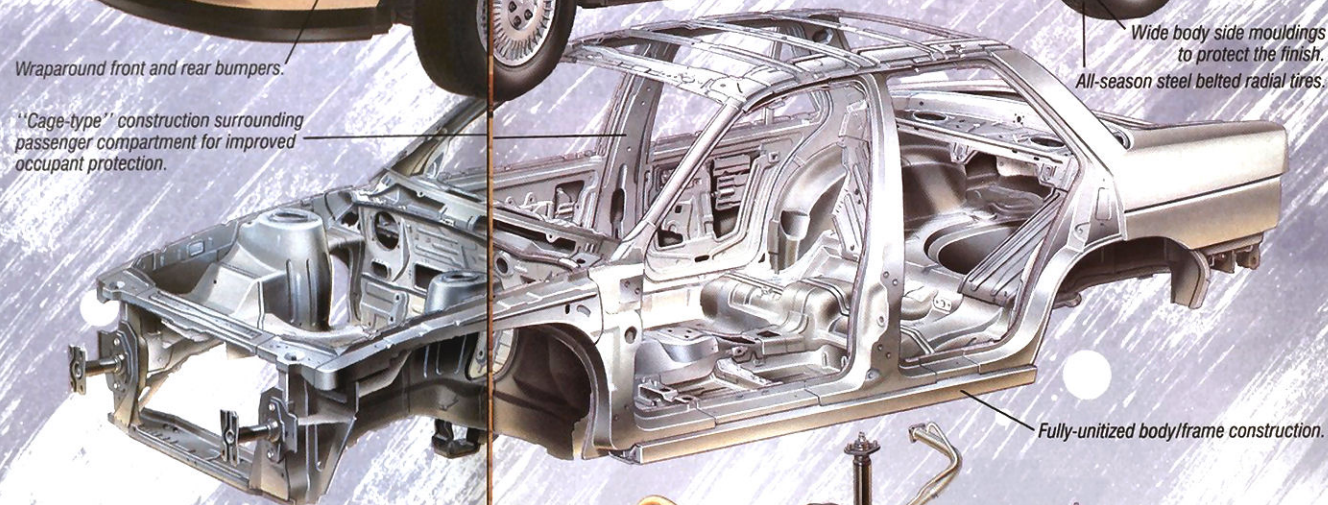
Wraparound front and rear bumpers.

"Cage-type" construction surrounding passenger compartment for improved occupant protection.



Spacious room for five.

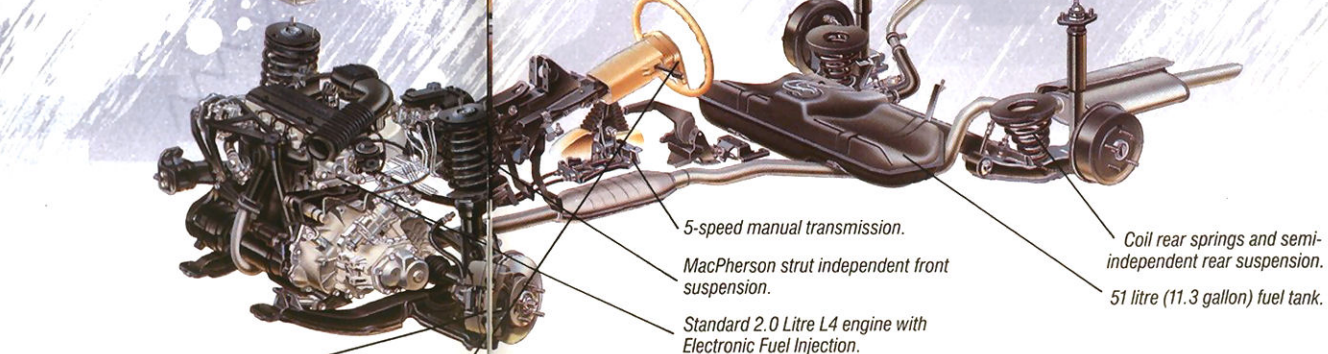
Base-coat/clear-coat paint for a lustrous look.



Wide body side mouldings to protect the finish.

All-season steel belted radial tires.

Fully-unitized body/frame construction.



Power front disc brakes with audible wear sensors.

Power rack-and-pinion steering is quick and responsive.

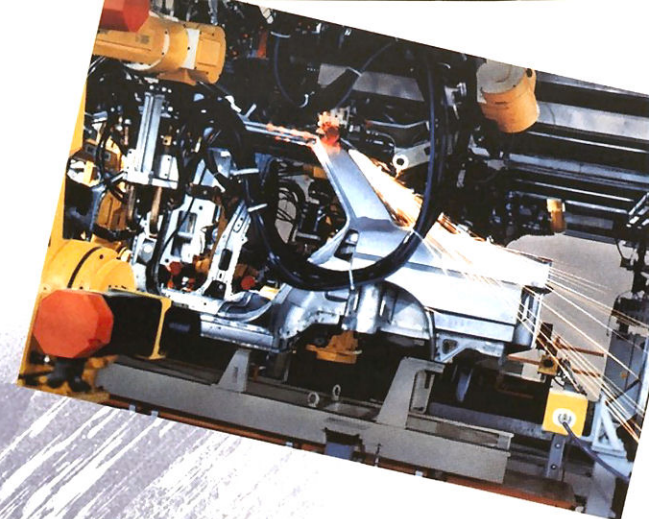
5-speed manual transmission.

MacPherson strut independent front suspension.

Standard 2.0 Litre L4 engine with Electronic Fuel Injection.

Coil rear springs and semi-independent rear suspension.

51 litre (11.3 gallon) fuel tank.



#### The Manufacturing Technology

Corsica is built in two of the world's most advanced automotive assembly plants. Both maintain the highest quality standards.

Robotic welding assures consistent quality of major chassis and body components. Then, each assembly is 100% inspected using laser visual equipment, ensuring bodies are built to specified tolerances.

Corsica is painted in a stationary position by four electric robots in modular paint booths. A high-pressure wash, followed by phosphate spray, prepares the body for painting. A cathodic ELPO dip applies anti-corrosion primer uniformly. Finally, an enamel base-coat is applied, followed by a clear-coat top layer. The high gloss finish announces to the world that this is a vehicle of quality and refinement.

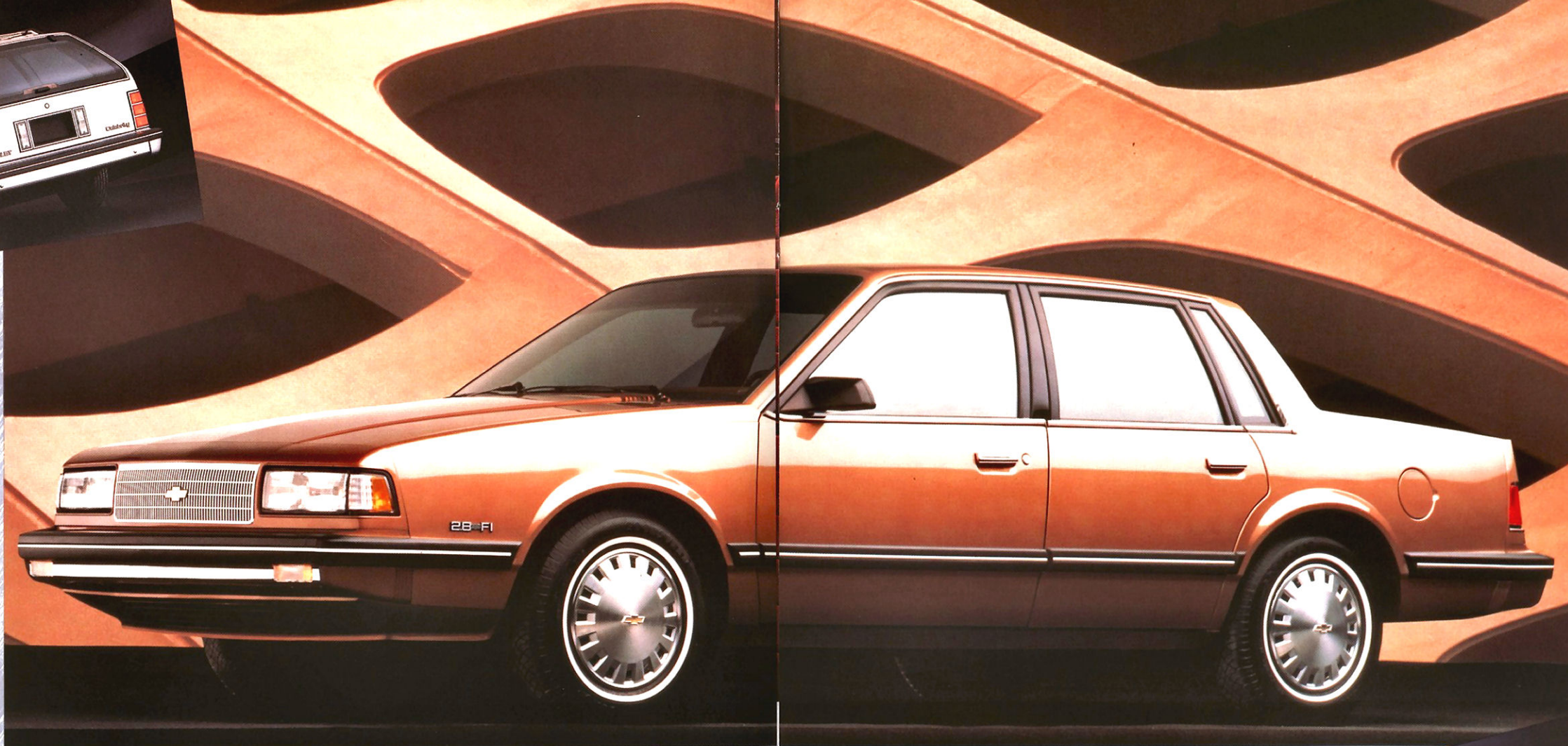
CORSICA



Celebrity Wagon



Celebrity Sedan



#### **Celebrity Standards**

There must be a reason why Chevy Celebrity is the best-selling mid-sized car in North America. In fact, there are lots of reasons. Like mid-size room and comfort in a vehicle that manoeuvres deftly. Snappy fuel-injected performance and the convenience of a 3-speed automatic transmission. And a variety of models to choose from, including one that's right for you.

#### **Model Choices**

As a sedan, Celebrity combines its

smooth styling with four-door convenience. In coupe form, Celebrity looks sporty and inviting. Choose the wagon, and you can carry as many as 8 passengers when you add the optional rear-facing third seat.

#### **Technical Features**

There are plenty of fine standards on every Celebrity. Here are some of the highlights:

- The standard powerteam combination is the popular 2.5 Litre Tech IV engine with Electronic Fuel Injection and

3-speed automatic transmission.

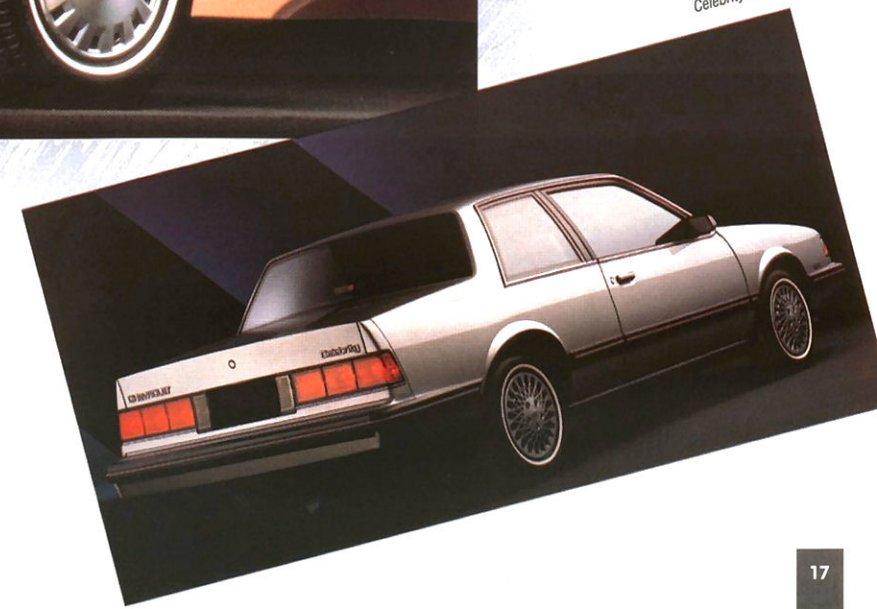
- Or opt for the 2.8 Litre V6 with Multi-Port Fuel Injection. The V6 may be linked to either a 5-speed manual (Eurosport only), a 3-speed automatic or a 4-speed automatic overdrive transmission.
- Power rack-and-pinion steering and front stabilizer bar deliver precise road manners.
- Power front disc/rear drum brakes, with audible wear sensors, respond on command.

- Tires are all-season steel belted radials.

#### **Clean, Attractive Style**

Extensive wind-tunnel testing has influenced Celebrity's sloping hoodline, high rear deck, and front and rear window mouldings. The thin pillar design offers excellent visibility. Body side mouldings help keep Celebrity looking like new.

Celebrity Coupe







The Eurosport instrument panel includes a padded steering wheel. Shown with optional special instrumentation: voltmeter, temperature gauge and trip odometer, air conditioning and stereo sound system.  
**Note:** Instruments are metric in Canada.

Celebrity Eurosport Sedan with optional cast aluminum wheels.



Eurosport styling makes the Celebrity wagon a model for both wide-open space and sporty appearance.  
 (Note: As on all wagons when 3rd seat is ordered, swing-out rear vent windows are included).

#### Celebrity Eurosport

Take Celebrity and add sport-inspired styling. Voilà. Celebrity Eurosport—as affordable as it is attractive.

#### Eurosport Equipment.

Available in all three Celebrity models—Coupe, Sedan, and Wagon—Eurosport includes:

- F41 Sport suspension, for improved steering feel and ride control.
- Fast ratio power steering.

- Larger P195/75R-14 all season steel-belted radial tires.
- Black-out exterior trim with red accents.
- Rally wheels with trim rings.
- Sport steering wheel.

#### Sporting Propositions.

You may further enhance Eurosport's character with any or all of these options:

- The 2.8 Litre V6 engine with Multi-Port Fuel Injection.

- Smooth shifting 5-speed manual transmission. (V6 only)
- Front bucket seats with centre console.
- 14" cast aluminum wheels.
- New, high performance Goodyear Eagle GT+4 radial tires.

Styling plus performance in one good-looking package. That's Celebrity Eurosport from Chevrolet.





### Celebrity Interiors

Celebrity offers two interior trim levels. Both are built around the principle that a car should be a comfort to be held by and a pleasure to behold.

#### Standard Trim

Features include:

- Full-cushioned seating for six with benches front and rear.
- Cloth trim in a choice of Dark Blue, Light Brown, Maroon, or Gray.
- Delco AM/FM stereo system with seek and scan,

digital clock and premium rear speakers.

- Tinted glass in all windows.
- Plus much more.

#### CL interior

In addition to the items listed above, the optional CL trim gives you more deeply contoured seats upholstered in plush velour. Available with the 55/45 split front seat with pull-down centre armrest. Custom door trim panels with carpeted lower area and CL nameplate complete the look.

The standard instrument panel.  
Note: Instruments are metric in Canada.



The standard Celebrity interior features a front bench seat with pull-down centre armrest.



Choose optional front bucket seats for any model Celebrity and personalize the accommodations.

The available CL cloth trim with divided front seat and pull-down centre armrest.

| Interiors                                    | Celebrity | Celebrity Eurosport |
|--|-----------|---------------------|
| Cloth bench front seat                       | S         | S                   |
| 55/45 cloth divided front seat               | A         | A                   |
| Reclining cloth front bucket seats w/console | A         | A                   |
| 55/45 custom CL cloth divided front seat     | A         | A                   |

S-Standard. A-Available.



## Engineering

Celebrity is the mid-size car designed to accommodate all of today's driving needs. Many contemporary features and systems are incorporated into this vehicle making it a pleasure to own and drive.

On these pages you'll find descriptions and illustrations of many of Celebrity's features. They'll help you understand what makes Celebrity such a fine automobile.

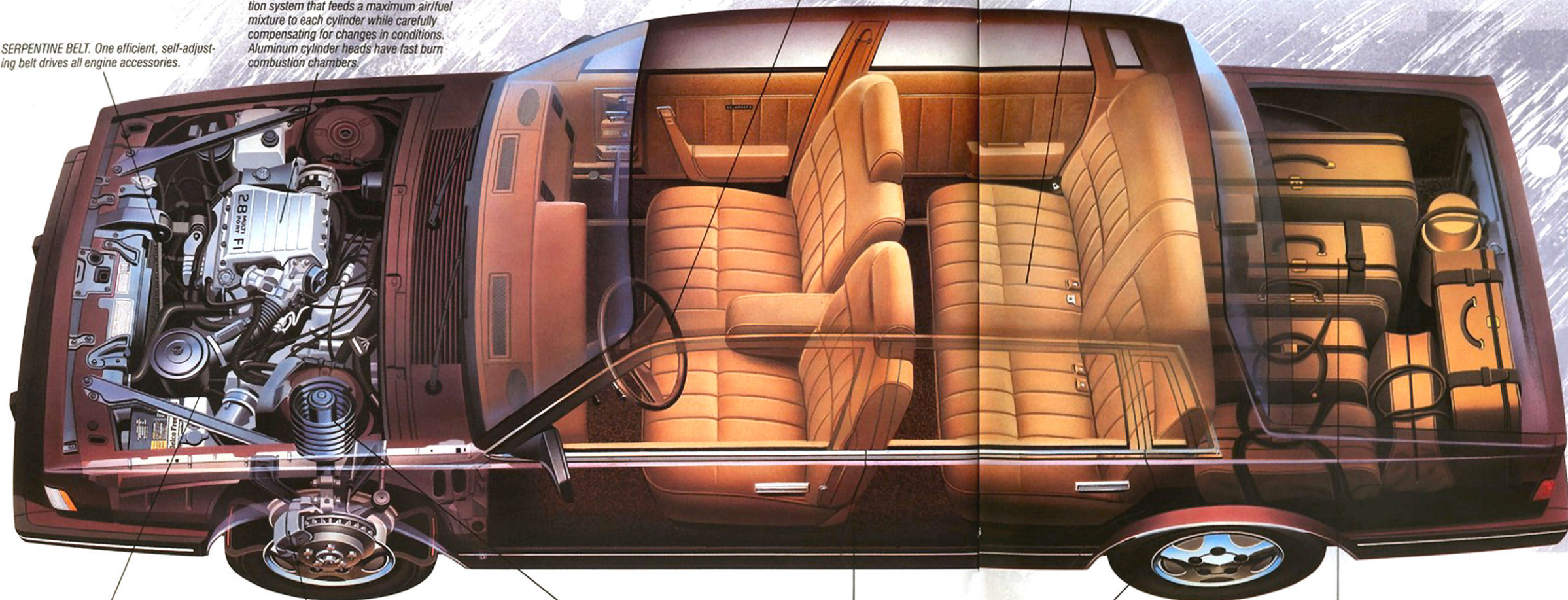
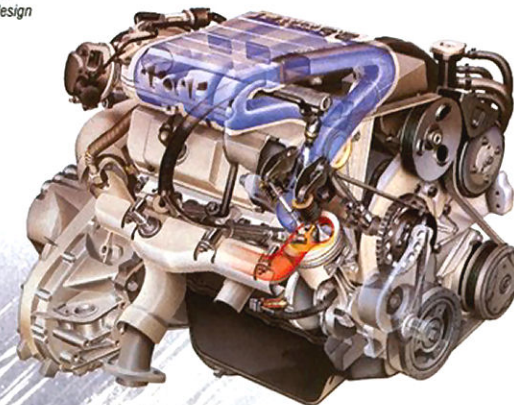
**2.8 LITRE V6.** The heart of this available Generation II engine is Multi-Port Fuel Injection system that feeds a maximum air/fuel mixture to each cylinder while carefully compensating for changes in conditions. Aluminum cylinder heads have fast burn combustion chambers.

**SERPENTINE BELT.** One efficient, self-adjusting belt drives all engine accessories.

**POWER RACK-AND-PINION STEERING** is standard. You'll appreciate the precise response this system delivers.

**SEATING FOR SIX** is standard on every Celebrity model. Other standard interior conveniences include power ventilation system and side window defoggers.

Standard 2.5 Litre Tech IV Engine. Electronic Fuel Injection helps make this powerplant one smooth performer. Cylinder head and intake manifold design provide good airflow and horsepower output. Horsepower 98 at 4,800 RPM.



**STANDARD 3-SPEED AUTOMATIC TRANSMISSION.** This smooth-shifting automatic with efficient torque converter clutch combines with the standard 2.5 Litre Tech IV 4-cylinder engine to provide satisfying performance.

**POWER FRONT DISC/REAR DRUM BRAKES** are standard on every Celebrity. Audible wear sensors signal when front disc pads need replacement.

**ADVANCED MacPHERSON STRUT FRONT SUSPENSION** and standard front stabilizer bar help Celebrity deliver a smooth, controlled ride.

**CELEBRITY CONSTRUCTION** is based on a rugged unitized body with double-panel doors, hood and deck lid or tailgate.

**STANDARD ALL-SEASON STEEL-BELTED RADIAL TIRES** combine with Celebrity's front-drive design to provide impressive traction under adverse conditions.

**A SPACIOUS 460 LITRES (16.2 CU. FT.) TRUNK** is sized for family trips. For even greater needs, Celebrity Wagon delivers up to 2,127 litres (75.1 cu. ft.) of cargo space.



A 5-speed manual transmission is optional on 6-cylinder Eurosport models. Team it with the optional 2.8 Litre engine and you've got yourself an eager performer.

CELEBRITY



### Caprice

Caprice remains a full-size North American classic, uncompromised in any way. This is true six-passenger spaciousness, with the comfort and quiet you expect in a luxury automobile.

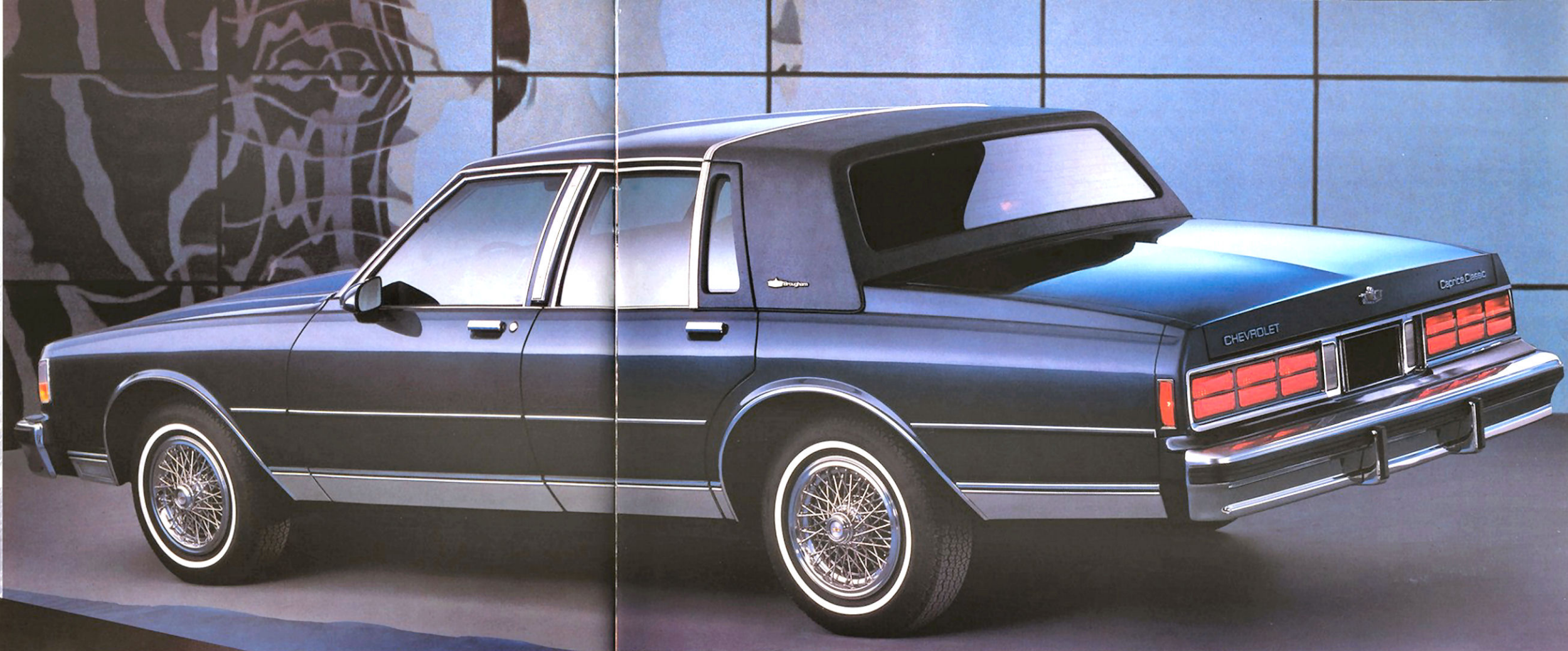
### The Tradition

A full 2945 mm (116-inch) wheelbase, rear drive, and a full-perimeter frame with 16 cushioned body mounts give Caprice excellent structural strength and well-balanced handling. Every Caprice has impressive towing capacity as well.

### The Technology

Standard power is the 4.3 Litre V6 engine with Electronic Fuel Injection. For more power, choose the optional 5.0 Litre V8 (standard in Caprice Classic Wagon). Both engines are linked to the 4-speed automatic overdrive transmission. Of course, power steering and power brakes are included. Specify the optional F41 Sport suspension for added handling facility and manoeuvrability.

The Caprice Classic Estate Wagon features simulated wood paneling.



The ultimate expression of Caprice elegance is the Brougham LS. A padded Landau-style rear roof treatment is accented by centre pillar opera lamps, LS monograms, and wire wheel covers. It's the crème de la crème Chevrolet.

### The Features

Enhancing the well-established Caprice value are a number of items newly standard for 1988:

- Tinted glass in all windows.
- Front and rear floor mats.
- Body side mouldings.
- Dual outside mirrors.
- Wide rocker panel mouldings.
- White-stripe tires.

To facilitate ordering your Caprice, new Easy Option packages are now available for all models.

### The Model Series

Caprice is available in five models within three series.

- Caprice Sedan is one of the most affordable full-size luxury vehicles you can buy.
- Caprice Classic (Sedan or Wagon) adds even more elegance, with wider lower body and wheel opening mouldings, full wheel covers, and bumper rub strips. (Air conditioning is standard on Wagon).
- The Caprice Classic Brougham (Sedan or LS Sedan) is the ultimate Chevrolet, as you can see above. Standard with every Brougham are front and rear bumper guards, power windows, door locks, trunk release, cornering lamps, Twilight Sentinel, electronic speed control, dual remote control outside mirrors, Comfort-tilt steering, and intermittent windshield wiper system. Caprice. It's still everything a full-size vehicle should be.

CAPRICE



**Caprice Interiors**

Each of the three Caprice models has distinctive interior appointments, as detailed in the photos you see here.

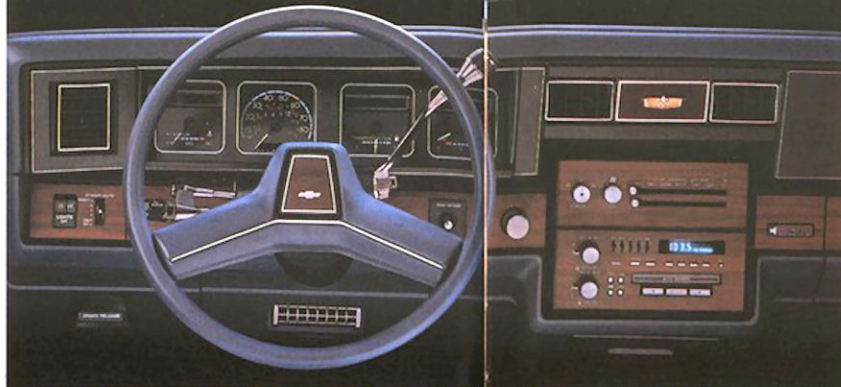
**Interior Features**

All Caprice models include these interior features:

- Ample room for six adults
- More than 592 Litre (20 cu. ft.) trunk space.
- Full-width front bench seating.
- Optional divided front seat with front and rear armrests and reclining passenger seat back.

- Delco AM/FM stereo music system with seek and scan and digital clock.
- Tinted glass all around.
- Lockable, lighted glove box.
- Instrument panel courtesy lights.
- Full door-to-door and luggage area carpeting.

Uncompromised room, ride, comfort, and style. These are attributes of this North American automotive institution—Caprice by Chevrolet.



The Brougham instrument panel, shown with the standard Special Instrumentation. All Brougham models include auxiliary lighting, individual front courtesy and luggage compartment lamps and more.

Note: Instruments in Canada are metric.



The richness of leather is optional in the Brougham series. These are seating surfaces so elegant you'll feel like royalty everytime you climb aboard. Standard Brougham seating (not shown) is of velour, in a 55/45 split front bench. The rear seat also includes a pull-down centre armrest. Thicker cut-pile carpeting adds luxury, as does the pillow-type seating.

| Interiors  | Caprice | Caprice Classic | Caprice Classic Brougham/LS |
|--|---------|-----------------|-----------------------------|
| Cloth bench front seat                               | S       | —               | —                           |
| Vinyl bench front seat                               | A       | —               | —                           |
| Cloth divided 50/50 front seat with dual armrests    | A       | S               | —                           |
| Vinyl divided 50/50 front seat with dual armrests    | —       | A†              | —                           |
| Cloth divided 55/45 front seat with centre armrest   | —       | —               | S                           |
| Leather divided 55/45 front seat with centre armrest | —       | —               | A                           |

S—Standard. A—Available. †—Wagon only.

In Caprice Classic, the interior features deeply contoured seats covered in soft-knit velour. Padded door handles, carpeted lower doors and additional sound insulation contribute to Caprice's fabled luxury and quiet ride.

The standard interior includes foam-cushioned cloth seats with pull-down centre armrest.

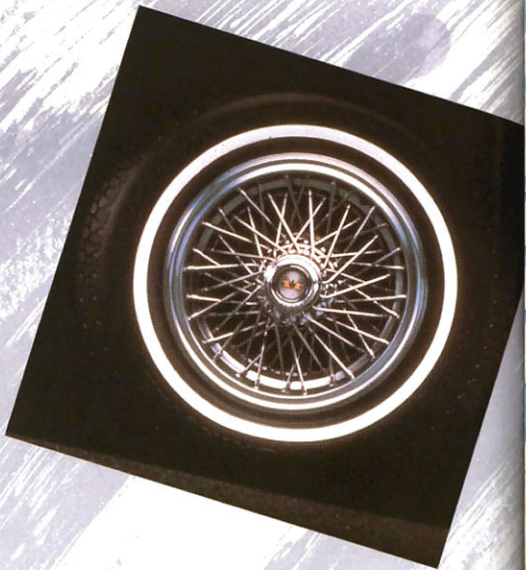




**Personalize Your Family Chevrolet**

Start with the wheels, add audio equipment, choose the colour – it's all part of the excitement of owning a new family Chevrolet.

On these next several pages, you'll find descriptions of standard features and optional equipment available for the Chevrolet vehicles described in this catalogue. For ordering convenience, many options are now grouped into packages to facilitate ordering. By studying these lists carefully, you'll be able to outfit a Chevy that's exactly right for you.



**Optional Wheels**

- Corsica
  - Aluminum wheel
  - Sport wheel cover
- Celebrity
  - Wire wheel cover with lock
  - Rally wheel with trim ring
  - Aluminum wheel
- Celebrity Eurosport
  - Aluminum wheel
- Caprice
  - Wire wheel cover with lock
  - Sport wheel cover



**Optional Audio Equipment**

There is a full line of GM Delco Music Systems available for Chevrolet family cars. Each music system offers specific features. The following list tells you which systems are available on each type of car.

ETR AM/FM Stereo with Seek & Scan, Digital Clock, Auto Reverse Cassette. Available on Corsica, Celebrity and Caprice.

ETR AM/FM Stereo with Seek & Scan, Digital Clock, Auto Reverse Cassette, Graphic Equalizer. Available on Caprice.

**Exterior Colours**

- Corsica
  - Silver Metallic
  - Black Metallic
  - Light Blue Metallic
  - Medium Blue Metallic
  - Light Driftwood Metallic
  - White
  - Red Garnet Metallic
  - Medium Gray Metallic
- Available Custom Two-Tones:
  - Silver Metallic/Medium Gray Metallic
  - Black Metallic/Medium Gray Metallic
  - Light Blue Metallic/Medium Blue Metallic
  - Red Garnet Metallic/Silver Metallic
- Celebrity
  - White
  - Silver Metallic

- Medium Gray Metallic
- Black
- Light Blue Metallic
- Dark Blue Metallic\*
- Light Brown Metallic
- Dark Blue Metallic\*
- Dark Red Metallic
- Medium Rosewood Metallic\*
- Available Custom Two-Tones:
  - Silver Metallic/Medium Gray Metallic\*
  - Black/Silver Metallic
  - Dark Blue Metallic/Silver Metallic\*
  - Light Brown Metallic/Black\*
  - Dark Red Metallic/Silver Metallic
  - Silver Metallic/Black†
  - Medium Gray Metallic/Silver Metallic†

\* Not Available Eurosport  
† Eurosport only  
**Note:** Metallic colours are optional on Corsica and Celebrity models.

- Caprice
  - White
  - Medium Gray Metallic
  - Black
  - Light Blue Metallic\*\*
  - Dark Blue Metallic
  - Beige\*\*
  - Light Brown Metallic\*\*
  - Dark Brown Metallic\*\*
  - Dark Red Metallic\*\*
  - Dark Maroon Metallic
- Available Custom Two-Tone\*\*:
  - Medium Gray Metallic/Dark Maroon Metallic
  - Black/Medium Gray Metallic
  - Dark Blue Metallic/Light Blue Metallic
  - Light Brown Metallic/Dark Brown Metallic
  - Dark Maroon Metallic/Dark Red Metallic

\*\* NA on Caprice Classic Brougham LS



# CORSICA FEATURES AND OPTIONS

|   | Corsica<br>4-Door<br>Sedan | Corsica LT<br>4-Door<br>Sedan |
|---|----------------------------|-------------------------------|
| <b>EXTERIOR FEATURES</b>  |                            |                               |
| Fascias, front and rear in body colour<br>with black uppers and red stripe inserts                              | –                          | S                             |
| Fascias, front and rear in body colour with charcoal<br>uppers (including rub strips) and bright stripe inserts | S                          | –                             |
| Finish, base-coat/clear coat  | S                          | S                             |
| Grille, charcoal (Black on LT)  | S                          | S                             |
| Mirrors, black dual outside, left remote control  | S                          | S                             |
| Mouldings, black body side with red stripe insert   | –                          | S                             |
| Mouldings, charcoal body side with bright stripe insert   | S                          | –                             |
| Mouldings, charcoal window reveal and door belt<br>(Black on LT)  | S                          | S                             |
| Rear end panel black license plate pocket   | S                          | S                             |
| Stop lamp, centre high-mounted  | S                          | S                             |
| Wheels, 13" black steel with full cover   | S                          | –                             |
| Wheels, 14" styled steel  | –                          | S                             |
| Windshield wipers, concealed 2-speed with<br>"wet-arm" washer system  | S                          | S                             |

|   | Corsica<br>4-Door<br>Sedan | Corsica LT<br>4-Door<br>Sedan |
|---|----------------------------|-------------------------------|
| <b>INTERIOR FEATURES</b>  |                            |                               |
| Ashtray and lamp, front   | S                          | S                             |
| Ashtray, rear on parking brake cover  | S                          | S                             |
| Bucket seats, contoured reclining front<br>cloth with separate head restraints                            | S                          | S                             |
| Carpeting, black trunk floor  | S                          | S                             |
| Carpeting, nylon tight-weave front and rear floor   | S                          | S                             |
| Defoggers, side window  | S                          | S                             |
| Defroster, rear window  | S                          | S                             |
| Door panels, soft vinyl covered with cloth inserts  | S                          | S                             |
| Glove box, sliding drawer-type with lamp  | S                          | S                             |
| Lighter, cigarette  | S                          | S                             |
| Lighting group, auxiliary   | S                          | S                             |
| Outlets, power ventilation  | S                          | S                             |
| Radio, AM/FM stereo ETR radio w/seek and scan, clock,<br>digital display, extended range 4 speaker system | S                          | S                             |
| Safety belts, front and rear (including rear shoulder belts)  | S                          | S                             |
| Seat adjuster, manual 4-way driver's side   | S                          | S                             |
| "Smart Switch," multi-function for turn signals, hi-beam,<br>optional speed control master switch         | S                          | S                             |
| Speedometer, electric   | S                          | S                             |
| Steering wheel, colour-keyed vinyl  | S                          | S                             |
| Steering wheel, custom  | –                          | S                             |
| Stop lamp, centre high-mounted  | S                          | S                             |
| Sunshades, colour-keyed cloth-covered<br>"snap-up" with map strap on LH side                              | S                          | S                             |

|  | Corsica<br>4-Door<br>Sedan | Corsica LT<br>4-Door<br>Sedan |
|--|----------------------------|-------------------------------|
| <b>MECHANICAL FEATURES</b>   |                            |                               |
| Battery, heavy-duty maintenance-free                                     | S                          | S                             |
| Brakes, power front disc and rear drum                                   | S                          | S                             |
| Construction, unitized body  | S                          | S                             |
| Drive, front-wheel   | S                          | S                             |
| Engine mounting, transverse  | S                          | S                             |
| Insulator, hood  | S                          | S                             |
| Jack, scissor-type with ratchet-type wheel wrench                        | S                          | S                             |
| Steering, power rack-and-pinion  | S                          | S                             |
| Suspension, MacPherson-strut front                                       | S                          | S                             |
| Tires, P185/80R-13 all-season steel-belted<br>radial ply blackwall tires | S                          | –                             |
| Tires, P195/70R-14 all-season steel-belted radial ply tires              | A<br>(CL only)             | S                             |

|   | Corsica<br>4-Door<br>Sedan | Corsica LT<br>4-Door<br>Sedan |
|---|----------------------------|-------------------------------|
| <b>CORSICA INDIVIDUAL OPTIONS</b>   |                            |                               |
| Air conditioning: includes increased engine cooling,<br>generator capacity and tinted glass   | A                          | A                             |
| Door Locks, Power   | A                          | A                             |
| Engine, 2.8 Litre MFI V6  | A                          | A                             |
| Heater, engine block  | A                          | A                             |
| Package, Operating Convenience: includes power windows<br>and power door locks  | A                          | A                             |
| Paint, custom two-tone  | A                          | –                             |
| Paint, metallic   | A                          | A                             |
| Radio equipment:<br>AM/FM stereo ETR with seek/scan, clock, digital display<br>and cassette stereo tape player (Air Conditioning required)          | A                          | A                             |
| AM stereo/FM stereo ETR with seek/scan, clock, digital<br>display, cassette stereo tape player and graphic<br>equalizer (Air Conditioning required) | A                          | A                             |
| Speed control, electronic: includes Comfortilt steering wheel   | A                          | A                             |
| Suspension, heavy-duty: includes<br>special springs and shock absorbers   | A                          | A                             |
| Striping, lower accent  | A                          | A                             |
| Transmission, 3-speed automatic   | A                          | A                             |
| Tires, steel-belted radial<br>P185/80R-13 all-season white-stripe   | A                          | –                             |
| P195/70R-14 all-season white-stripe   | A<br>(CL only)             | –                             |

|   | Corsica<br>Package<br>1 | Corsica CL<br>Package<br>2 | Corsica CL<br>Package<br>3 | Corsica CL<br>Package<br>4 |
|---|-------------------------|----------------------------|----------------------------|----------------------------|
| <b>CORSICA EASY OPTION PACKAGES</b>   |                         |                            |                            |                            |
| Bucket Seats, Reclining Front with<br>Custom Cloth Trim                     | –                       | •                          | •                          | •                          |
| Console, Floor  | –                       | •                          | •                          | •                          |
| Door Locks, Power   | –                       | –                          | –                          | •                          |
| Gauge Package with Tachometer   | –                       | –                          | •                          | •                          |
| Glass, Soft-Ray Tinted  | •                       | •                          | •                          | •                          |
| Horns, Dual   | •                       | •                          | •                          | •                          |
| Mirror, Visor Vanity  | –                       | •                          | •                          | •                          |
| Package, Operating Convenience: includes<br>Power Door Locks, Power Windows | –                       | –                          | –                          | •                          |
| Speed Control, Electronic: includes<br>Comfortilt steering wheel            | –                       | •                          | •                          | •                          |
| Suspension, Firm Ride and Handling  | –                       | –                          | •                          | •                          |
| Tires, P195/70R-14 All-Season S/B<br>Radial Blackwall                       | –                       | –                          | •                          | •                          |
| Trunk Opener, Power   | •                       | •                          | •                          | •                          |
| Wheels, Aluminum with Locks   | –                       | –                          | •                          | •                          |
| Wiper System, Intermittent Windshield                                       | •                       | •                          | •                          | •                          |

Corsica Easy Option Packages content subject to change.

|                    | Engine<br>Availability | Transmission<br>Availability   |
|--------------------|------------------------|--------------------------------|
| <b>POWER TEAMS</b> |                        |                                |
| Engine             | Corsica<br>LT          | 5-Speed<br>Manual<br>Automatic |
| 2.0 Litre EFI* L4  | S                      | S                              |
| 2.8 Litre MFI** V6 | A                      | A                              |

\*Electronic Fuel Injection. \*\*Multi-Port Fuel Injection.

| DIMENSIONS: mm (inches)            | Sedan        |
|------------------------------------|--------------|
| Wheelbase                          | 2627 (103.4) |
| Length (overall)                   | 4659 (183.4) |
| Width (overall)                    | 1733 ( 68.2) |
| Height (loaded)                    | 1428 ( 56.2) |
| Head Room – Front                  | 987 ( 38.9)  |
| Head Room – Rear                   | 950 ( 37.4)  |
| Leg Room – Front                   | 1102 ( 43.4) |
| Leg Room – Rear                    | 890 ( 35.0)  |
| Cargo Volume: litres (cu. ft.)     | 382 ( 13.5)  |
| Fuel Tank Capacity: litres (gals.) | 51 ( 11.3)   |

S – Standard. A – Available.

# CAPRICE FEATURES AND OPTIONS

|   | Caprice | Caprice<br>Classic | Caprice<br>Classic<br>Brougham |
|---|---------|--------------------|--------------------------------|
| <b>EXTERIOR FEATURES</b>  |         |                    |                                |
| Antenna, fixed mast radio   | S       | S                  | S                              |
| Guards, front and rear bumper   | –       | A                  | S                              |
| Grille, chrome-plated   | S       | S                  | S                              |
| Glass, Soft-Ray tinted  | S       | S                  | S                              |
| Headlamp bezels, bright   | S       | S                  | S                              |
| Headlamps, composite halogen  | S       | S                  | S                              |
| Lamps, triple-unit tail/backup  | S       | S                  | S                              |
| Mirrors, dual outside, left side remote control*  | S       | S                  | S                              |
| Mouldings: (bright)   |         |                    |                                |
| Body side   | S       | S                  | S                              |
| Door edge   | –       | A                  | S                              |
| Wide rocker panel   | –       | S                  | S                              |
| Wheel opening   | A       | S                  | S                              |
| Ornament, standup hood  | S       | S                  | S                              |
| Pillar applique, bright brushed centre  | –       | –                  | S                              |
| Pinstripping, body  | –       | S                  | S                              |
| Rub strips, bumper  | A       | S**                | –                              |
| Vinyl roof, full padded   | A       | A                  | S                              |
| Vinyl roof canopy w/opera lamps and smaller<br>rear window                                    | –       | –                  | S†                             |
| Wheel covers, full  | S       | S                  | –                              |
| Wheel covers, sport   | A       | A                  | S                              |
| Wheel covers, wire  | A       | A                  | S†                             |
| *Left/Right remote on Brougham and Brougham LS **Wagon only<br>†Standard of Brougham LS only. |         |                    |                                |

|  | Caprice | Caprice<br>Classic | Caprice<br>Classic<br>Brougham |
|--|---------|--------------------|--------------------------------|
| <b>INTERIOR FEATURES</b>   |         |                    |                                |
| Belts, deluxe colour-keyed safety  | S       | S                  | S                              |
| Carpeting, colour-keyed cut-pile   | S       | S                  | –                              |
| Carpeting, special 20 oz. colour-keyed floor   | –       | –                  | S                              |
| Defroster, rear window   | S       | S                  | S                              |
| Door panels, carpeted lower  | S       | S                  | S                              |
| Door panels, with padded armrests  | S       | S                  | S                              |
| Headlamp-on reminder   | S       | S                  | S                              |
| Hinged panel for concealed storage in<br>cargo floor (Wagon)   | –       | S                  | –                              |
| Instrumentation, gauge package   | –       | A                  | S                              |
| Insulation, quiet sound group  | S       | S                  | S                              |
| Lighting equipment:<br>Auxiliary Group: includes interior, engine,<br>luggage compartment, courtesy, dome and<br>reading lamps | A       | S                  | S                              |
| Cornering lamps  | –       | A                  | S                              |
| Twilight Sentinel  | –       | A                  | S                              |
| Lighter, cigarette   | S       | S                  | S                              |
| Mats, front and rear floor, with carpet inserts  | S       | S                  | S                              |
| Mirror, rearview day/night   | S       | S                  | S                              |
| Mirror, illuminated passenger's side visor vanity  | –       | S                  | S                              |
| Radio, AM/FM stereo w/seek and scan, clock,<br>digital display, 4 speakers   | S       | S                  | S                              |
| Power equipment:<br>Windows, locks, trunk lid release  | A       | A                  | S                              |
| Seat, full-width front bench with centre armrest   | S       | S                  | –                              |
| Seat, 55/45 divided front with centre armrest<br>and exclusive cloth trim  | –       | –                  | S                              |
| Seat, third (Wagon)  | –       | S                  | –                              |
| Side compartment, lockable (Wagon)   | S       | S                  | –                              |
| Speed control, electronic  | A       | A                  | S                              |
| Steering wheel, Comfortilt   | A       | A                  | S                              |
| Stoptamp, centre high-mounted  | S       | S                  | S                              |
| Storage pockets, recessed in cargo area<br>trim panels (Wagon)   | S       | S                  | –                              |
| Tailgate window, power (Wagon)   | –       | S                  | –                              |
| Trim, deluxe luggage compartment   | –       | –                  | S                              |

|   | Caprice | Caprice<br>Classic | Caprice<br>Classic<br>Brougham |
|---|---------|--------------------|--------------------------------|
| <b>MECHANICAL FEATURES</b>  |         |                    |                                |
| Audible wear sensors, front disc brakes   | S       | S                  | S                              |
| Battery, Delco Freedom II Plus, low-profile                                     | S       | S                  | S                              |
| Body construction, all-welded heavy-gauge steel                                 | S       | S                  | S                              |
| Body mounting system, sixteen cushion   | S       | S                  | S                              |
| Brakes, power front disc/rear drum  | S       | S                  | S                              |
| Brakes, heavy duty (Wagon)  | –       | S                  | –                              |
| Engine, 4.3 Litre EFI V6 (Sedan)  | S       | S                  | S                              |
| Engine, 5.0 Litre 4-Bbl. V8 (Wagon)   | A       | S†                 | A                              |
| Fenders, inner front and rear   | S       | S                  | S                              |
| Frame, full-perimeter   | S       | S                  | S                              |
| Generator, Delco-tron with built-in<br>solid state regulator                    | S       | S                  | S                              |
| Ignition system, High Energy  | S       | S                  | S                              |
| Recovery system, coolant  | S       | S                  | S                              |
| Steering, power   | S       | S                  | S                              |
| Suspension equipment:<br>Full coil  | S       | S                  | S                              |
| Independent coil-spring front   | S       | S                  | S                              |
| Front stabilizer bar  | S       | S                  | S                              |
| Four-link coil spring rear  | S       | S                  | S                              |
| Heavy-duty front and rear (Wagon)   | –       | S                  | –                              |
| Tires: (steel-belted radial ply)<br>P205/75R-15 all-season white-stripe (Sedan) | S       | S                  | S                              |
| P225/75R-15 all-season white-stripe (Wagon)                                     | –       | S                  | –                              |
| Transmission, 4-speed overdrive automatic                                       | S       | S                  | S                              |
| †Standard on Wagon only; available for Sedan.                                   |         |                    |                                |

|  | Caprice | Caprice<br>Classic | Caprice<br>Classic<br>Brougham |
|--|---------|--------------------|--------------------------------|
| <b>CAPRICE INDIVIDUAL OPTIONS</b>  |         |                    |                                |
| Air conditioning: includes increased<br>engine cooling and generator capacity  | A       | A*                 | A                              |
| Axle, limited slip differential  | A       | A                  | A                              |
| Axle, performance or trailer towing  | A       | A                  | A                              |
| Battery, heavy-duty  | A       | A                  | A                              |
| Cooling, heavy-duty engine and transmission  | A       | A                  | A                              |
| Door locks, power  | A       | A                  | S                              |
| Estate equipment: includes simulated woodgrain<br>appliques and "Estate" identification (Wagon)                      | –       | A                  | –                              |
| Heater, engine block   | A       | A                  | A                              |
| Instrumentation, gauge package   | –       | A                  | S                              |
| Paint, exterior:<br>Custom two-tone  | A       | A                  | A                              |
| Radio equipment:<br>AM/FM stereo ETR with seek and scan,<br>digital display, clock, cassette and<br>4-speaker system | A       | A                  | A                              |
| AM/FM stereo ETR with seek and scan,<br>digital display, clock, cassette,<br>graphic equalizer and 4-speaker system  | A       | A                  | A                              |
| Automatic power antenna  | A       | A                  | A                              |
| Roof cover, padded vinyl:<br>Full roof cover: (Sedan)  | –       | A                  | –                              |
| Seat, 6-way power: driver's side   | A       | A                  | A                              |
| passenger's side   | A       | A                  | A                              |
| Seat and trim equipment:<br>Caprice Sedan  |         |                    |                                |
| Bench front seat with vinyl trim   | A       | –                  | –                              |
| Divided front seat with dual armrests and<br>manual passenger recliner, cloth trim                                   | A       | –                  | –                              |
| Divided front seat with dual armrests<br>and vinyl trim  | A       | –                  | –                              |

|   | Caprice | Caprice<br>Classic | Caprice<br>Classic<br>Brougham |
|---|---------|--------------------|--------------------------------|
| <b>CAPRICE INDIVIDUAL OPTIONS (cont.)</b>   |         |                    |                                |
| Caprice Classic Wagon:<br>Divided front seat with dual armrests<br>and vinyl trim   | –       | A                  | –                              |
| Caprice Classic Brougham:<br>Divided front seat w/centre armrest<br>and leather trim  | –       | –                  | A                              |
| Suspension equipment:<br>Heavy-duty: includes special springs and<br>shock absorbers (Standard on Wagon)                              | A       | A                  | A                              |
| Sport: includes special springs, shock<br>absorbers and stabilizer bars   | A       | A                  | A                              |
| Superlift rear shock absorbers (Wagon)  | –       | A                  | –                              |
| Trunk opener, power   | A       | A                  | S                              |
| Wheel equipment:<br>Sport wheel covers  | A       | A                  | S**                            |
| Wire wheel covers with lock   | A       | A                  | A†                             |
| Windows, power  | A       | A                  | A                              |
| *Standard on Caprice Classic Wagon.<br>**Except Caprice Classic Brougham LS Sedan.<br>†Standard on Caprice Classic Brougham LS Sedan. |         |                    |                                |

|   | Caprice<br>Package<br>1 | Caprice Classic<br>Package<br>2 |
|---|-------------------------|---------------------------------|
| <b>CAPRICE EASY OPTION PACKAGES<br/>Equipment</b>       |                         |                                 |
| Carrier, Roof Luggage (Wagon)                           | –                       | •                               |
| Deflector, Rear Window Air (Wagon)                      | –                       | •                               |
| Guards, Bumper  | –                       | •                               |
| Instrumentation, Gauge Package                          | –                       | •                               |
| Lighting: Cornering Lamps                               | –                       | •                               |
| Lighting: Auxiliary Group                               | •                       | –                               |
| Lighting: Twilight Sentinel                             | –                       | •                               |
| Mirrors, Left and Right Remote Control                  | –                       | •                               |
| Mouldings, Door Edge                                    | –                       | •                               |
| Mouldings, Wheel Opening                                | •                       | –                               |
| Power: Door Locks                                       | –                       | •                               |
| Power: Tailgate Lock (Wagon)                            | –                       | •                               |
| Power: Trunk Opener                                     | •                       | •                               |
| Power: Windows  | –                       | •                               |
| Speed Control, Electronic                               | –                       | •                               |
| Steering Wheel, Comfortilt                              | •                       | •                               |
| Wiper System, Intermittent Windshield                   | •                       | •                               |
| Caprice Easy Option Packages content subject to change. |                         |                                 |

|                                   | Engine<br>Availability | Automatic<br>w/Overdrive |
|-----------------------------------|------------------------|--------------------------|
| <b>POWER TEAMS</b>                |                        |                          |
| Engine                            | Sedan                  | Station<br>Wagon         |
| 4.3 Litre EFI* V6                 | S                      | –                        |
| 5.0 Litre 4-Bbl. V8               | A                      | –                        |
| 5.0 Litre 4-Bbl. V8               | –                      | S                        |
| *Electronic Fuel Injection        |                        |                          |
| <b>DIMENSIONS: mm (in.)</b>       | Sedan                  | Wagon                    |
| Wheelbase                         | 2945 (116.0)           | 2945 (116.0)             |
| Length (overall)                  | 5405 (212.8)           | 5464 (215.1)             |
| Width (overall)                   | 1914 ( 75.3)           | 2014 ( 79.3)             |
| Height (loaded)                   | 1433 ( 56.4)           | 1457 ( 58.1)             |
| Head Room – Front                 | 979 ( 38.5)            | 1005 ( 39.6)             |
| Head Room – Rear                  | 965 ( 38.0)            | 999 ( 39.3)              |
| Leg Room – Front                  | 1072 ( 42.2)           | 1072 ( 42.2)             |
| Leg Room – Rear                   | 992 ( 39.1)            | 959 ( 37.8)              |
| Cargo Volume: litres (cu. ft.)    | 592 ( 20.9)            | 2488 ( 87.9)             |
| Fuel Tank Capacity: litre (gals.) | 95 ( 20.8)             | 95 ( 20.8)               |
| S – Standard. A – Available.      |                        |                          |



# CELEBRITY FEATURES AND OPTIONS

|  | Celebrity       |       | Celebrity Eurosport |       |
|--|-----------------|-------|---------------------|-------|
|  | Coupe/<br>Sedan | Wagon | Coupe/<br>Sedan     | Wagon |
| <b>EXTERIOR FEATURES</b>                                     |                 |       |                     |       |
| Antenna, fixed mast radio                                    | S               | S     | S                   | S     |
| Bumper, chrome, front and rear                               | S               | S     | S                   | S     |
| Bumper, front and rear rub strips<br>black with white insert | S               | S     | —                   | —     |
| black with red insert  | —               | —     | S                   | S     |
| Glass, Soft-Ray tinted                                       | S               | S     | S                   | S     |
| Grille: bright chrome  | S               | S     | —                   | —     |
| black  | —               | —     | S                   | S     |
| Handles, door lock and cylinders<br>Bright                   | S               | S     | —                   | —     |
| Black  | —               | —     | S                   | S     |
| Headlamps, composite halogen                                 | S               | S     | S                   | S     |
| Frames, black door and window                                | S               | S     | S                   | S     |
| Front valance panel, flexible<br>body-coloured               | S               | S     | S                   | S     |
| Mirrors, LH remote control,<br>RH manual control             | S               | S     | S                   | S     |
| Mouldings: (bright)  |                 |       |                     |       |
| Roof drip  | S               | S     | —                   | —     |
| Belt reveal  | S               | S     | —                   | —     |
| Tailgate window  | —               | S     | —                   | S     |
| Mouldings: (black)   |                 |       |                     |       |
| Roof drip  | —               | —     | S                   | S     |
| Belt reveal  | —               | —     | S                   | S     |
| Windshield and rear window                                   | S               | S     | S                   | S     |
| Mouldings, wide body side:<br>with white insert              | S               | S     | —                   | —     |
| with red insert  | —               | —     | S                   | S     |
| Mouldings, wheel opening                                     | A               | S     | A                   | A     |
| Tailamps, three-segmented wraparound                         | S               | —     | S                   | —     |
| Tailamps, stacked 3-section                                  | —               | S     | —                   | S     |
| Wheel trim:  |                 |       |                     |       |
| Full wheel covers  | S               | S     | —                   | —     |
| Rally wheels with trim rings                                 | —               | —     | S                   | S     |
| Window, swing-up tailgate                                    | —               | S     | —                   | S     |

|   | Celebrity       |       | Celebrity Eurosport |       |
|---|-----------------|-------|---------------------|-------|
|   | Coupe/<br>Sedan | Wagon | Coupe/<br>Sedan     | Wagon |
| <b>INTERIOR FEATURES</b>                        |                 |       |                     |       |
| Armrest, front centre                           | S               | S     | S                   | S     |
| Armrests, large padded door                     | S               | S     | S                   | S     |
| Belts, deluxe colour-keyed safety               | S               | S     | S                   | S     |
| Carpet, luggage compartment                     | S               | —     | S                   | —     |
| Carpeting, colour-keyed one-piece<br>acoustical | S               | S     | S                   | S     |
| Defloggers, side window                         | S               | S     | S                   | S     |
| Defroster, rear window                          | S               | S     | S                   | S     |

S—Standard. A—Available.

|   | Celebrity       |       | Celebrity Eurosport |       |
|---|-----------------|-------|---------------------|-------|
|   | Coupe/<br>Sedan | Wagon | Coupe/<br>Sedan     | Wagon |
| <b>INTERIOR FEATURES (cont.)</b>                          |                 |       |                     |       |
| Headliner, moulded fiberglass acoustical                  | S               | S     | S                   | S     |
| Instrumentation, digital tachometer                       | —               | —     | S                   | S     |
| Lock, glove compartment                                   | S               | S     | S                   | S     |
| Locks, sliding theft-deterrent door                       | S               | S     | S                   | S     |
| Locks, inertia front seat back (Coupes)                   | S               | —     | S                   | —     |
| Mats, front and rear floor                                | S               | S     | S                   | S     |
| Mirror, day/night rearview                                | S               | S     | S                   | S     |
| Radio, AM/FM Stereo ETR<br>w/seek and scan, digital clock | S               | S     | S                   | S     |
| Seats:  |                 |       |                     |       |
| Bench front seat with cloth trim<br>(Sedan and Wagon)     | S               | S     | S                   | S     |
| Notchback front seat with cloth<br>trim (Coupe)           | S               | —     | S                   | —     |
| Storage area, carpeted underfloor                         | —               | S     | —                   | S     |
| Stoptamp, centre high-mounted                             | S               | S     | S                   | S     |
| Storage pocket, recessed in LH cargo<br>area trim panel   | —               | S     | —                   | S     |
| Windows, roll-down in all doors                           | S               | S     | S                   | S     |

|  | Celebrity       |       | Celebrity Eurosport |       |
|--|-----------------|-------|---------------------|-------|
|  | Coupe/<br>Sedan | Wagon | Coupe/<br>Sedan     | Wagon |
| <b>MECHANICAL FEATURES</b>                                     |                 |       |                     |       |
| Audible wear sensors, front disc brakes                        | S               | S     | S                   | S     |
| Battery, Delco Freedom II Plus                                 | S               | S     | S                   | S     |
| Body construction, fully unitized                              | S               | S     | S                   | S     |
| Brakes, power front disc/rear drum                             | S               | S     | S                   | S     |
| Coil Ignition System, Computer<br>Controlled                   | S               | S     | S                   | S     |
| Computer Command Control system                                | S               | S     | S                   | S     |
| Drive, front-wheel   | S               | S     | S                   | S     |
| Double-panel construction door,<br>hood, decklid/tailgate      | S               | S     | S                   | S     |
| Generator, Delcotron with built-in<br>solid state regulator    | S               | S     | S                   | S     |
| Steering, power rack-and-pinion                                | S               | S     | S                   | S     |
| Suspension equipment:  |                 |       |                     |       |
| Front stabilizer bar   | S               | S     | S                   | S     |
| MacPherson strut front   | S               | S     | S                   | S     |
| Trailing arm rear suspension with<br>integrated stabilizer bar | S               | S     | S                   | S     |
| Rear suspension track bar                                      | S               | S     | S                   | S     |
| Tires: (steel-belted radial ply)                               |                 |       |                     |       |
| P185/75R-14 all-season blackwall                               | S               | S     | —                   | —     |
| P195/75R-14 all-season blackwall                               | —               | —     | S                   | S     |
| Transmission, 3-speed automatic                                | S               | S     | S                   | S     |

|   | Celebrity       |       | Celebrity Eurosport |       |
|---|-----------------|-------|---------------------|-------|
|   | Coupe/<br>Sedan | Wagon | Coupe/<br>Sedan     | Wagon |
| <b>CELEBRITY INDIVIDUAL OPTIONS</b>   |                 |       |                     |       |
| Air conditioning, Four-Season:<br>includes increased engine cooling<br>and generator capacity | A               | A     | A                   | A     |
| Battery, heavy-duty   | A               | A     | A                   | A     |
| Engine, 2.8 Litre MFI V6  | A               | A     | A                   | A     |
| Cooling, heavy-duty engine and<br>transmission  | A               | A     | A                   | A     |
| Heater, engine block  | A               | A     | A                   | A     |
| Instrumentation, digital tachometer   | —               | —     | A                   | A     |
| Paint, custom two-tone  | A               | A     | A                   | A     |
| Radio equipment:<br>AM/FM stereo ETR with seek & scan,<br>digital display, clock and cassette | A               | A     | A                   | A     |
| Seat equipment:   |                 |       |                     |       |
| 55/45 Divided front seat with cloth trim  | A               | A     | A                   | A     |
| Reclining bucket seats with cloth trim:<br>includes floor console                             | A               | A     | A                   | A     |
| 55/45 Divided front seat with custom<br>"CL" cloth trim                                       | A               | A     | A                   | A     |
| Third seat, includes rear quarter<br>vent windows   | —               | A     | —                   | A     |
| Power 6-way seat, driver's side   | A               | A     | A                   | A     |
| Reclining passenger seat back   | A               | A     | A                   | A     |
| Striping, body pin  | A               | A     | —                   | —     |
| Speed control, electronic   | A               | A     | A                   | A     |
| Suspension, heavy-duty  | A               | A     | A                   | A     |
| Tires: (steel-belted radial ply)  |                 |       |                     |       |
| P185/75R-14 all-season white-stripe   | A               | A     | —                   | —     |
| P195/75R-14 all-season blackwall  | A               | A     | —                   | —     |
| P195/75R-14 all-season white-stripe   | A               | A     | —                   | —     |
| P195/70R-14 Goodyear Eagle GT<br>all-season blackwall performance                             | —               | —     | A                   | A     |
| Transmissions:  |                 |       |                     |       |
| 5-Speed manual  | —               | —     | A†                  | A†    |
| 4-Speed overdrive automatic   | A               | A     | A                   | A     |
| Washer/wiper system, rear window  | —               | A     | —                   | A     |
| Wheel Equipment:  |                 |       |                     |       |
| Wire wheel cover with lock  | A               | A     | —                   | —     |
| Aluminum wheels   | A               | A     | A                   | A     |

S—Standard. A—Available.  
†On 6-cylinder models only.

|   | Celebrity    |              | Celebrity Eurosport |              |
|---|--------------|--------------|---------------------|--------------|
|   | Package<br>1 | Package<br>2 | Package<br>1        | Package<br>2 |
| <b>CELEBRITY EASY OPTION PACKAGES</b>                   |              |              |                     |              |
| <b>EQUIPMENT</b>  |              |              |                     |              |
| Door Locks, Power                                       | —            | •            | —                   | •            |
| Lighting, Auxiliary Group includes<br>dome reading lamp | •            | •            | —                   | —            |
| Mouldings, Wheel Opening<br>& Wide Rocker Panel         | •            | •            | •                   | •†           |
| Speed Control, Electronic                               | —            | •            | —                   | •            |
| Steering Wheel, Comfortilt                              | •            | •            | •                   | •            |
| Trunk Opener, Power (except Wagon)                      | •            | •            | •                   | •            |
| Windows, Power  | —            | •            | —                   | •            |
| Wiper System, Intermittent Windshield                   | •            | •            | •                   | •            |
| <b>Additional Wagon Features</b>                        |              |              |                     |              |
| Air Deflector, Rear Window                              | •            | •            | •                   | •            |
| Carpet, Deluxe Load Floor                               | —            | •            | •                   | •            |
| Carrier, Roof Luggage                                   | •            | •            | •                   | •            |
| Lock, Luggage Compartment and<br>Quarter Stowage        | •            | •            | •                   | •            |
| Tailgate Release, Power                                 | •            | •            | •                   | •            |

Celebrity Easy Option Packages content subject to change.  
†Black rocker panel mouldings.

|                    | Engine<br>Availability | Transmission Availability |           |                          |
|--------------------|------------------------|---------------------------|-----------|--------------------------|
|                    |                        | 5-Speed<br>Manual         | Automatic | Automatic<br>w/Overdrive |
| <b>POWER TEAMS</b> |                        |                           |           |                          |
| Engine             |                        |                           |           |                          |
| 2.5 Litre EFI* L4  | S                      | —                         | S         | —                        |
| 2.8 Litre MFI** V6 | A                      | A†                        | A         | A                        |

\*Electronic Fuel Injection. \*\* Multi-Port Fuel Injection.  
†Available on Eurosport only.

| <b>DIMENSIONS:</b> mm (in.)       | Coupe        | Sedan        | Wagon         |
|-----------------------------------|--------------|--------------|---------------|
| Wheelbase                         | 2664 (104.9) | 2664 (104.9) | 2664 (104.9)  |
| Length (overall)                  | 4783 (188.3) | 4783 (188.3) | 4847 (190.8)  |
| Width (overall)                   | 1760 ( 69.3) | 1760 ( 69.3) | 1760 ( 69.3)  |
| Height (loaded)                   | 1375 ( 54.1) | 1375 ( 54.1) | 1378 ( 54.3)  |
| Head Room—Front                   | 980 ( 38.6)  | 980 ( 38.6)  | 980 ( 38.6)   |
| Head Room—Rear                    | 963 ( 37.9)  | 965 ( 37.9)  | 987 ( 38.9)   |
| Leg Room—Front                    | 1070 ( 42.1) | 1070 ( 42.1) | 1070 ( 42.1)  |
| Leg Room—Rear                     | 917 ( 36.1)  | 925 ( 36.4)  | 903 ( 35.6)   |
| Cargo Volume: litres (cu. ft.)    | 460 ( 16.2)  | 460 ( 16.2)  | 2127 ( 75.1)* |
| Fuel Tank Capacity: litre (gals.) | 59 ( 13.0)   | 59 ( 13.0)   | 59 ( 13.0)    |

\*Second seat folded down. Second seat up 1285 litres (45.4 cu. ft.)



# SAFETY FEATURES

## Occupant Protection

- Manual lap/shoulder safety belts for driver and right front passenger (driver's side includes visual and audible warning system)
- Manual lap safety belts (except Corsica), manual lap/shoulder safety belts (Corsica), outboard rear seat positions
- Manual lap safety belts, centre front/rear seat positions, where applicable
- Energy-absorbing steering column
- Energy-absorbing instrument panel
- Energy-absorbing seat-back tops, front
- Laminated safety windshield glass
- Side-guard door beam
- Safety interlocking door latches
- Passenger-guard inside door lock handles
- Inertia-locking, folding front seat-backs, 2-door models
- Safety armrests
- Head restraints, driver and right front passenger (adjustable)

## Accident Avoidance

- Side marker lights and reflectors
- Parking lamps that illuminate with headlamps
- Four-way hazard warning flasher
- Backup lights
- Centre high-mounted stop lamp
- Directional signal control with lane-change feature
- Windshield defroster, washer and multi-speed wipers
- Inside rearview mirror
- Outside left and right rearview mirrors
- Brake system with dual master cylinder and warning light
- Starter safety switch
- Dual-action hood-latch system
- Low-glare finish on windshield mouldings, wiper arms/blades, metallic steering wheel surfaces
- Illuminated heater and defroster controls
- Illuminated windshield wiper and washer controls (Corsica)
- Tires with built-in tread-wear indicators

## Theft Deterrence

- Audible reminder for ignition key removal
- Theft-deterrent steering column lock
- Visible vehicle identification number

## For Your Protection\*

1. New Vehicle Limited Warranty—12 months or 20,000 kilometres, whichever comes first.
2. Powertrain Warranty—6 years or 100,000 kilometres, whichever comes first on gasoline engines (\$100 deductible).
3. Owner Assistance Program.
4. Special Policy Adjustment Program.

\*Ask your dealer for details.



General Motors recognizes that taking delivery of your new vehicle is a significant event. To ensure that your delivery experience contributes to your overall satisfaction, we have implemented a "Commitment to Excellence" Delivery Procedure.

This procedure includes a thorough new vehicle inspection by both the service technician and salesperson and a follow-up survey to determine your satisfaction with the delivery experience.

General Motors "Commitment to Excellence" is yet another excellent reason to "Look at GM Today."

## A Word About Corrosion Protection

Your 1988 GM passenger car was designed and built to resist corrosion. It comes with a standard 6-year/160,000 kilometres corrosion perforation warranty. Application of additional rust-inhibiting materials is not necessary or required under the 6-year/160,000 kilometre corrosion coverage. Ask your dealer for details.



While there are many service contracts available on the market today, there is only one which gives you an agreement directly with General Motors. It is the one with the GM Protection Plan logo shown above. This logo on all Plan material assures you that the service contract you are buying is the GM Plan, we believe the finest such program available to GM owners.

The GM Protection Plan provides additional protection during and after the new vehicle limited warranties. Ask your General Motors dealer for details and information about the genuine GM Protection Plan.

# GMAC

## Financing or Leasing, It's As Easy As GMAC

The good feeling that comes when you buy or lease a new GM vehicle can be enhanced when it comes to making the financial arrangements.

Which is why so many people finance with General Motors Acceptance Corporation. With GMAC it's done right in the showroom. Terms are tailor-made to suit your personal needs. You can choose your own monthly payment date. And the rates are friendly as can be.

So when the time comes, just tell us "I want GMAC." We'll take it from there while you relax.

## GM Autoplex

### A Pledge To Canada

### An Example To The World

Throughout North America, General Motors is embarking on a new manufacturing program that is setting new standards for building cars and trucks right into the next century.

In Canada, it's called GM Autoplex. Although our technology and techniques are ultra modern, our philosophy still holds true to the original standard set by Col. Sam McLaughlin, GM Canada's first president—"One grade only, and that the best."

That philosophy, exemplified in the GM Canada workforce, was one of the main reasons Canada was chosen to spearhead this world-class program.

Consider the calendar of events. In 1987, GM Autoplex was part of our new truck program. In 1988, it will include a new GM world-class car program. By 1989, when all the key elements have been put in place, GM Autoplex will be the largest single automotive manufacturing complex in North America.

But the philosophy goes beyond even a project of this magnitude. Our on-going objective is to make sure that every vehicle that we make reflects GM's standard of excellence.

To maintain that excellence, we are insisting on more supplier involvement at the early stages of production, more training for the employees and greater use of sophisticated technology like robotics and fibre optics.

This is GM's on-going commitment to excellence, to Canada and to you. A commitment to produce the best quality cars and trucks possible at a price that's competitive.



## A Word About This Catalogue

The vehicles described in this catalogue incorporate components produced by General Motors of Canada Limited and related companies and suppliers. During manufacturing, different components than initially scheduled may be used.

All illustrations and specifications contained in this catalogue are based on the latest product information at time of publication approval. The right is reserved to make changes at any time, without notice, in prices, colours, materials, equipment, specifications and models, and to discontinue models. Some of the equipment shown or described throughout this catalogue is available at extra cost or can only be ordered in conjunction with the other optional equipment. Some options may not be available when your vehicle is built. Check with your dealer for complete information.

## A Word About Engines

Chevrolets are equipped with engines produced at facilities operated by GM car groups, subsidiaries or affiliated companies worldwide.





PRINTED IN CANADA

OCTOBER 1987