

Transitowne Mitsubishi
7420 Transit Road
Williamsville, New York 14221

1 9 8 9

GALANT



MITSUBISHI

Turning inspiration into reality.

Welcome to a bold new era of refined technology. This is contemporary Mitsubishi. Man and sophisticated machine in total harmony to enrich the human spirit.

Joy. Pride. Excitement. Confidence. Pure pleasure. At Mitsubishi, we believe a superbly crafted automobile should evoke those very human emotions as it delights your senses. And we marshal all our diverse skills in that service.

Our considerable resources are

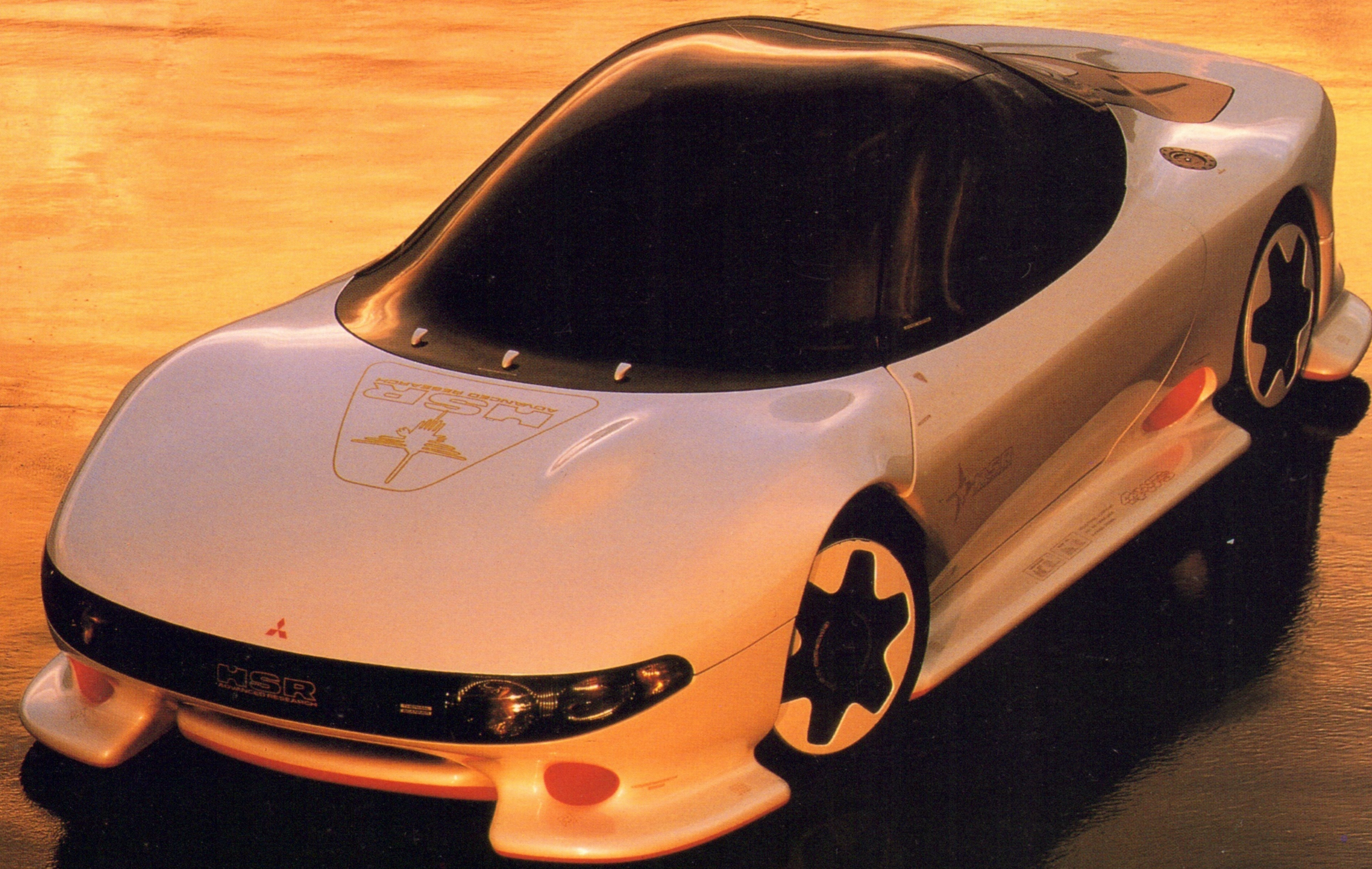
up to the job. We've been advancing the state of the automotive science since 1917.

And now we've crossed the threshold into a new generation of vehicles, inspired by the incredible HSR. A high-speed research concept vehicle—literally a lab on wheels—it powers the path Mitsubishi technology will take into the 21st century.

Its mission: To prove that pioneering Mitsubishi technology can help even ordinary drivers become master-

ful. To accomplish this ambitious goal, the HSR integrates wind-cleaving organic contours with such cutting-edge performance technologies as 4-wheel steering, 4-wheel drive, 4-wheel anti-lock braking, 4-wheel independent active suspension and a 4 valves per cylinder DOHC engine.

Significantly, many of the HSR's innovations are yours to enjoy in Mitsubishi cars you can own today. And that makes Mitsubishi, suddenly, the obvious choice.



1989 Galant. Japan Car of the Year.

"The most significant car introduced" was the phrase used by a panel of automobile experts to announce the new Mitsubishi Galant as Japan Car of the Year.

Competing against 45 other models, the Galant was singled out for this most-prestigious award for its practical use of high technology, distinctive and expressive styling, performance, quality and its remarkable value for the money. Uniquely, the best of the best.

But the Mitsubishi Galant is more than just a new departure in automobiles; it is a moving sensation. No other sports sedan ever looked like this. Or felt like this.

Galant's European styling is at once classic, yet contemporary; wind-tunnel slippery, yet boldly distinctive.

And though Galant welcomes a family, with four big doors and a spacious trunk, its spirited response and front-drive handling surpass the

performance of many vehicles with more sporting pretensions. This is one family sedan for grownups who haven't lost their taste for fun.

So while styling, technological innovations and outstanding value helped earn Galant the Car of the Year award in Japan, sheer pleasure will help make it the car of the year on your street.



Galant GS. A whole new breed of sports sedan.

Lithe grace. Flush exterior surfaces. Sporty rear spoiler. And excitement under the hood. This is the new Galant GS, expressed in a sleek, distinctive silhouette that says serious sports sedan.

Front-on, the Galant GS stands balanced in a wide stance on its big alloy wheels and low-profile radials, poised to run like a superbly trained athlete.

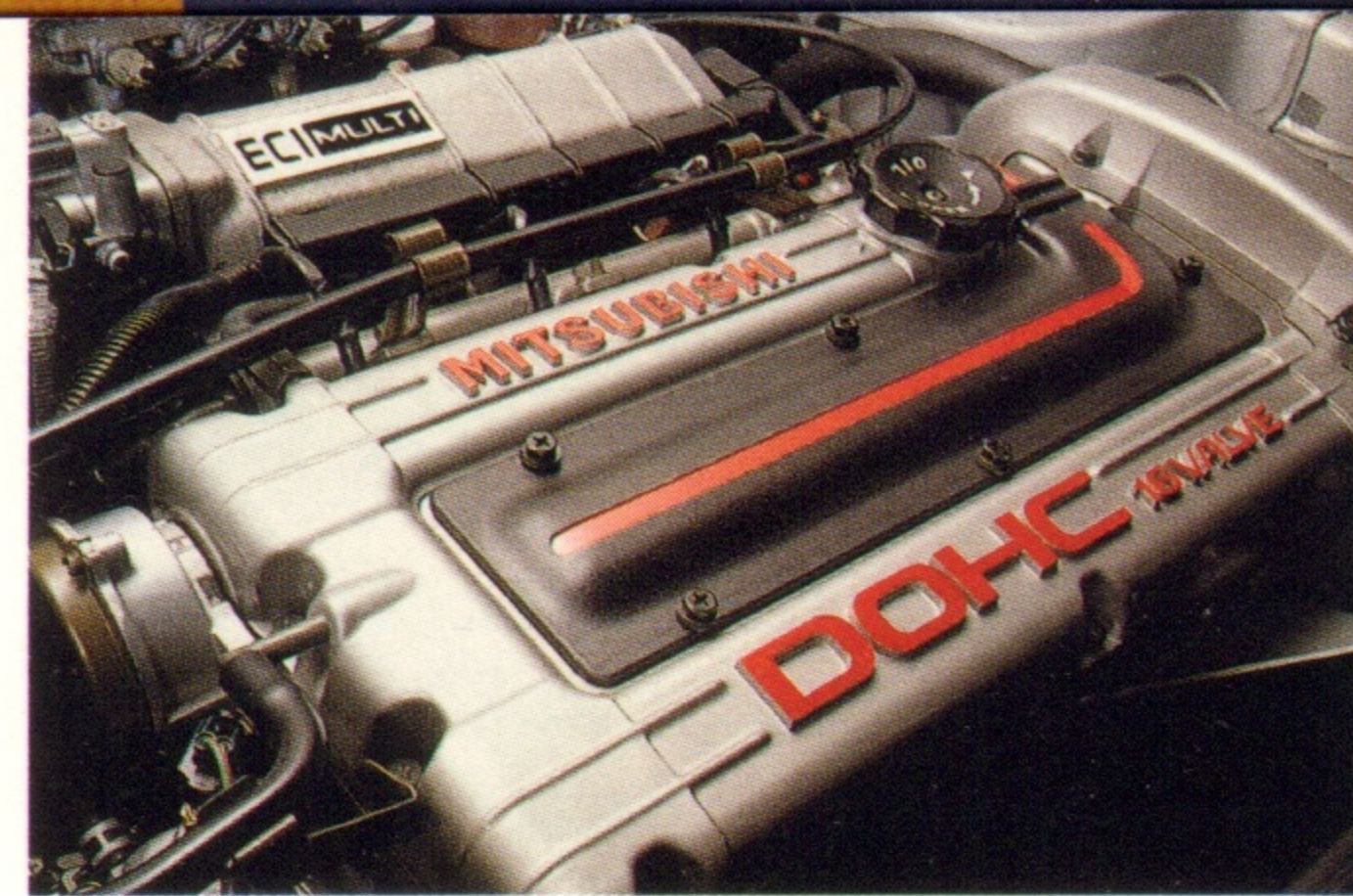
And run it does. Acceleration is breathtakingly brisk, from a brand-



new 2-liter DOHC engine that breathes deeply through four valves for each of its four cylinders. Sixteen valves. Multi-point fuel injection. Flat-out performance.

Mated to this high-revving, 135-hp powerplant is a precise 5-speed manual gearbox that's ready for the spirited driving you'll shift it through.

Galant also stops as well as it goes. Power-assist disc brakes at all four wheels bring you swiftly, confidently, to fade-resistant stops.



Galant GS also makes available the security of 4-wheel anti-lock braking (ABS), for straight-line stops without wheel lock-up, even when the road surface is slippery.

Uncommon among cars in Galant's class, ABS helps prevent skids by computer-controlled modulation of pressure to any wheel it feels

is losing traction.

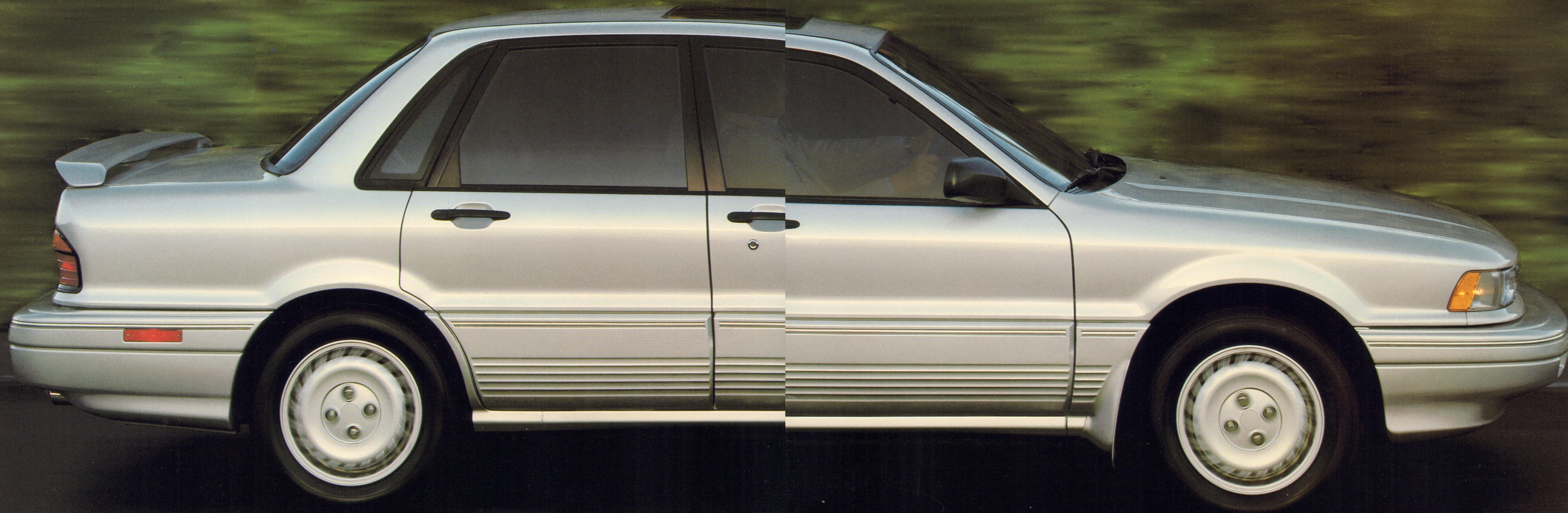
Even the rack-and-pinion steering on the Galant GS is special: power assisted, but not numb to road feel.

All this driver-friendly technology rides on the first active Electronically Controlled Suspension (Active-ECS™) in a production automobile.

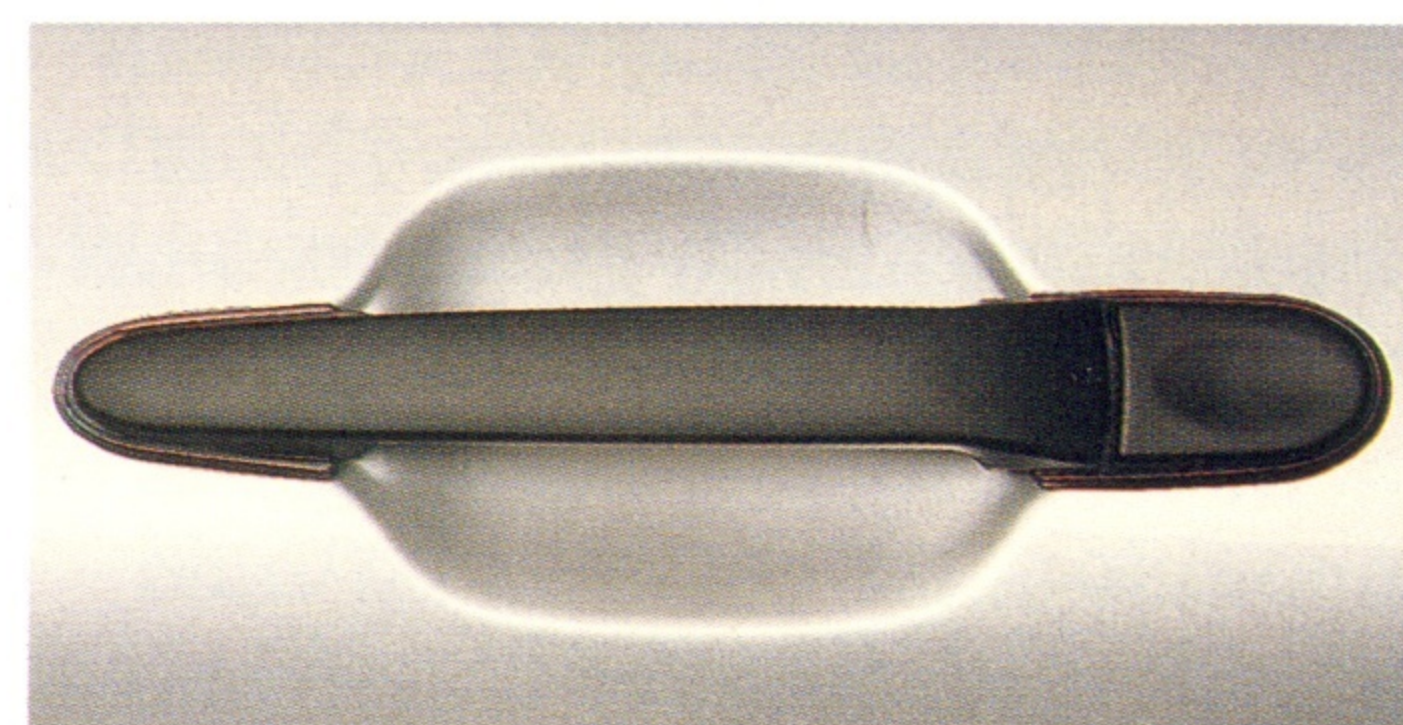
"Active" means ECS reacts to road surfaces and responds—instantly and automatically—to provide unparalleled stability no matter how winding or rough the road.

You literally ride on air in the Galant GS, as microprocessor-controlled pneumatic cells at each wheel adjust spring rates and damping forces between soft and hard to keep the car's posture steady and level.

Aerodynamic lines that please your eye. Advanced engineering that inspires your confidence. Exhilarating performance that races your pulse. This is the new Galant GS. There is no other sports sedan like it anywhere in the world.



Take your seat. The performance is about to start.



Enter, and settle in. You don't just sit in the new Galant GS, you become an integral part of it; the pivotal link in an interactive harmony between man and driving machine.

Look at the instrument panel. You're reading an *information* panel, not merely graphic displays and warning lights.

Huge analog speedometer and tachometer gauges billboard their data, white on black for legibility. At night, the numbers and graduations glow in the backlight of either orange or green (you decide with a switch) for still greater legibility.

Gauges monitor fuel level and coolant temperature. Quartz clock

and dual tripmeters inform at a glance.

Wrap your hands around the leather-wrapped steering wheel. See how they grip at the ideal 10- and 2-o'clock positions. Naturally.



European design, universal logic.

Flick the gullwing stalks. Control of headlamps, turn indicator and flash-to-pass, variable intermittent wiper/washer and cruise control are right at your touch.

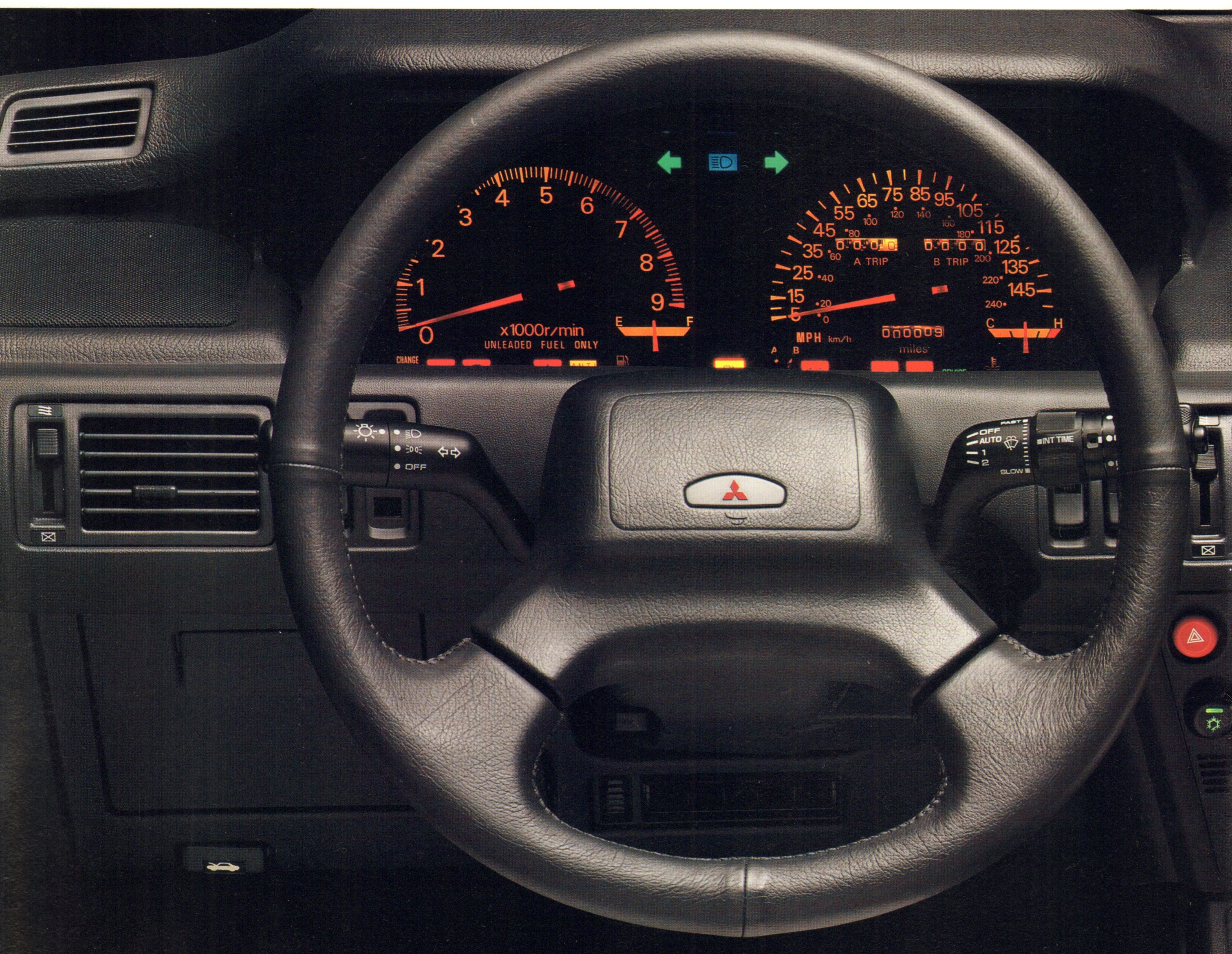
European-style rotary controls for air flow, fan-motor speed and temperature control are inches close.

Beneath your right hand lies another example of sensible Mitsubishi engineering: a button for selecting the degree of power-steering power boost you want.



Mitsubishi's Electronic Power Steering system (EPS-II™) is sensitive to vehicle speed, supplying more or less boost as needed. Choose between NORMAL and SPORT settings to vary the degree of steering assist you prefer, depending on your driving situation.

Logic and intelligence fill Galant's cockpit. It's a command center, where all the information you need for instant decisions is instantly accessible—without taking your hands from the wheel or your eyes from the road. In this driver's car, you concentrate on driving, not reaching.



Is the steering wheel too low for comfort? Too high for a clear view of the gauges? Don't peer; simply raise or lower the tilt steering column.

Now, let your hands fall to your sides. Notice how the right lands naturally on the 5-speed shifter and handbrake. Both are ergonomically positioned so there's never an awkward reach. Alongside, logically arranged on the same console, are switches for the sideview mirrors and power-steering mode select.



Your left hand finds power window switches on the armrest; remote trunk-lid and fuel filler-door releases are arranged below.

Feel how the 5-way driver's seat fits itself to you, not the other way around. Firm cushions covered in "grippy" jersey fabric support you. Side bolsters cradle you, forming a contoured lowback bucket that keeps your entire body comfortable, relaxed, alert. And securely supported even in turns.



In fact, turns in the new Galant GS are so secure—the ride so steady and level, thanks to Mitsubishi's Active-ECS™—you can virtually forget about leaning.

Enter a right turn, the car's left springs and shocks stiffen for flat cornering. Traverse low-speed bumps, Active-ECS raises the car to clear them. Accelerate to highway speeds, your Galant GS lowers, like a great cat, flattening its exposure to the onrushing wind.

You can elect to control performance modes yourself, by pressing the appropriate buttons on the dash. One even raises the car nearly two inches above normal ride height, making tire changing or snow-chain installation easier.

How accommodating. But that's what advanced Mitsubishi engineering is all about.



Galant LS. A perfect blend of style and excitement.

The Galant LS combines the convenience of the four doors you need with the sophisticated, distinctive styling and performance you want.

Its seductive compound curves form an aerodynamic wonder, barely disturbing the air as the Galant LS races the wind. You cruise in hushed near-silence.

Motivating force for the Galant LS is a new 2-liter, 4-cylinder SOHC engine. It powers you to an experience in exhilarating responsiveness,



using multi-point electronic fuel injection (ECT[™]) to produce instant acceleration and pulling power for hills and on-ramps.

The new powerplant mates to an innovative 4-speed automatic transmission with overdrive, standard. Electronically controlled, this new transmission lets you choose between POWER and ECONOMY modes at the press of a button. In the POWER mode, transmission shift points are delayed until the engine reaches

higher RPMs for maximum power and torque. In ECONOMY, shifts occur at lower RPMs to save fuel* and reduce engine noise and wear.

And while the Galant LS can rush you quickly to freeway speeds, its ventilated power front discs and rear drum brakes can bring you just as swiftly to consistent, straight-line stops.

Confidence. Galant inspires it, in every aspect of response and handling.

Galant's low stance—wide-track

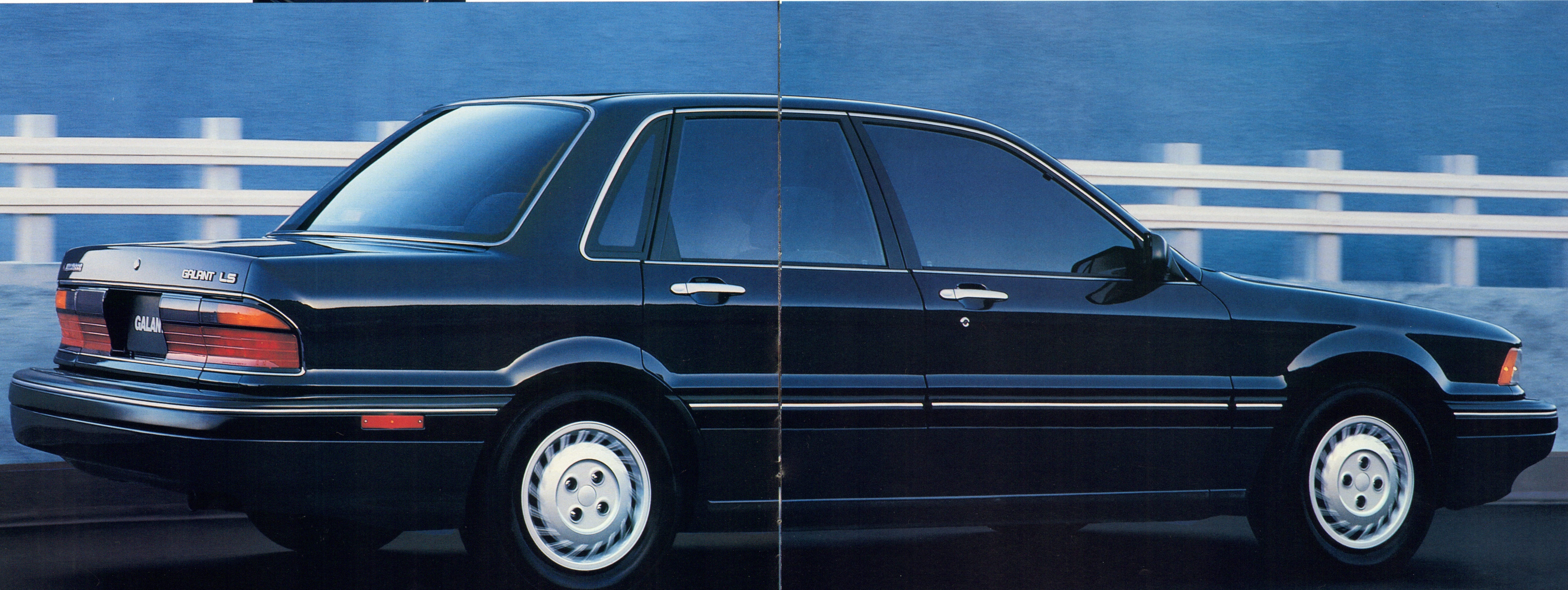


front and rear—redefines road-hugging sports sedans, as it rides stable and secure on almost any road surface.

Independent struts up front and a 3-link suspension in back—reinforced with stabilizer bars fore and aft—help you track through turns as though glued to the blacktop.

High style. High performance. Excitement in a luxurious package. The new Galant LS is performing art.

*See EPA mileage figures in specifications section.



Galant LS. Slip into something comfortable.

The Galant LS interior environment is a master's degree in enhanced motoring pleasure. Firm, velour cushions bolster you for relaxed, alert driving.

The driver's lowback bucket seat adjusts six ways to surround you with form-fitting comfort. Seat-cushion fore-aft position, height, seatback rake, lumbar support and headrest height and angle all adjust for a true custom fit.

Even the sloping hood adds to the panoramic view from your vantage.

Switches, buttons, dials, knobs, gauges. . . everything you press, adjust, twist or turn is exactly, tactilely correct. Size, shape, texture, degree of ease or resistance. . . all combine to transform the simple acts of control into small, sensuous delights. And, of course, all lie within instant access.

Beneath your left hand for example, you'll find a door grip and a cushioned armrest that places controls for the power windows (the driver's window offers one-touch "Auto-Down" conve-

nience) and window lockout at your fingertips. Where they belong. Farther down sit remote releases for hood, trunk lid and fuel-filler door.

In easy reach of your right hand rest controls for the heating/ventilation system and available air conditioning.



And as you hum down the road, enjoy the tones of the electronically tuned AM/FM stereo cassette radio with six speakers. Or choose the optional high-power electronically tuned AM stereo/FM stereo cassette radio with 9-band graphic equalizer and six speakers.

Rear-seat passengers join in Galant's pleasures. Generous hip-room and headroom bring a feeling of gracious space for three adults.

Light pours through the large greenhouse. The sense of airiness, the

luxury of leg and elbow room, evoke impressions of a lithe limousine.

Thoughtfulness is at work here, too. An ingenious armrest, centered between the rear-seat cushions, folds down to expose an access door to the trunk. Stow skis and other long cargo inside, out of reach of weather and nosy fingers.

Completing the Galant's comforts are child-protection rear-door locks and courtesy lights throughout the passenger compartment.



Technology at your service.

Ⓐ Active Suspension. Galant GS “feels” the road. And reacts to what it feels... *automatically*. Dive stops. Squat starts. Corner lean. Bumpy roads. All are effectively minimized by the world's first electronically controlled active suspension (Active-ECS™) in a production car. Unlike passive springs and shocks, or those systems that must be manually adjusted, Mitsubishi's Active-ECS™ adjusts itself to create ideal suspension characteristics.

Ⓑ No more numb steering. Every Galant provides precise, rack-and-pinion power steering. The GS improves this already excellent handling and road feel with Mitsubishi's speed-sensitive Electronic Power Steering system (EPS-II™).

The amount of its power boost depends on car speed and steering-wheel turning rate. The slower you go (cornering and parking), the more boost. At highway speeds, you feel little boost—and a lot of control.



Depending on driving preferences and road conditions, you can vary the degree of steering effort by choosing between SPORT and NORMAL settings. Just by pressing a button on the console.

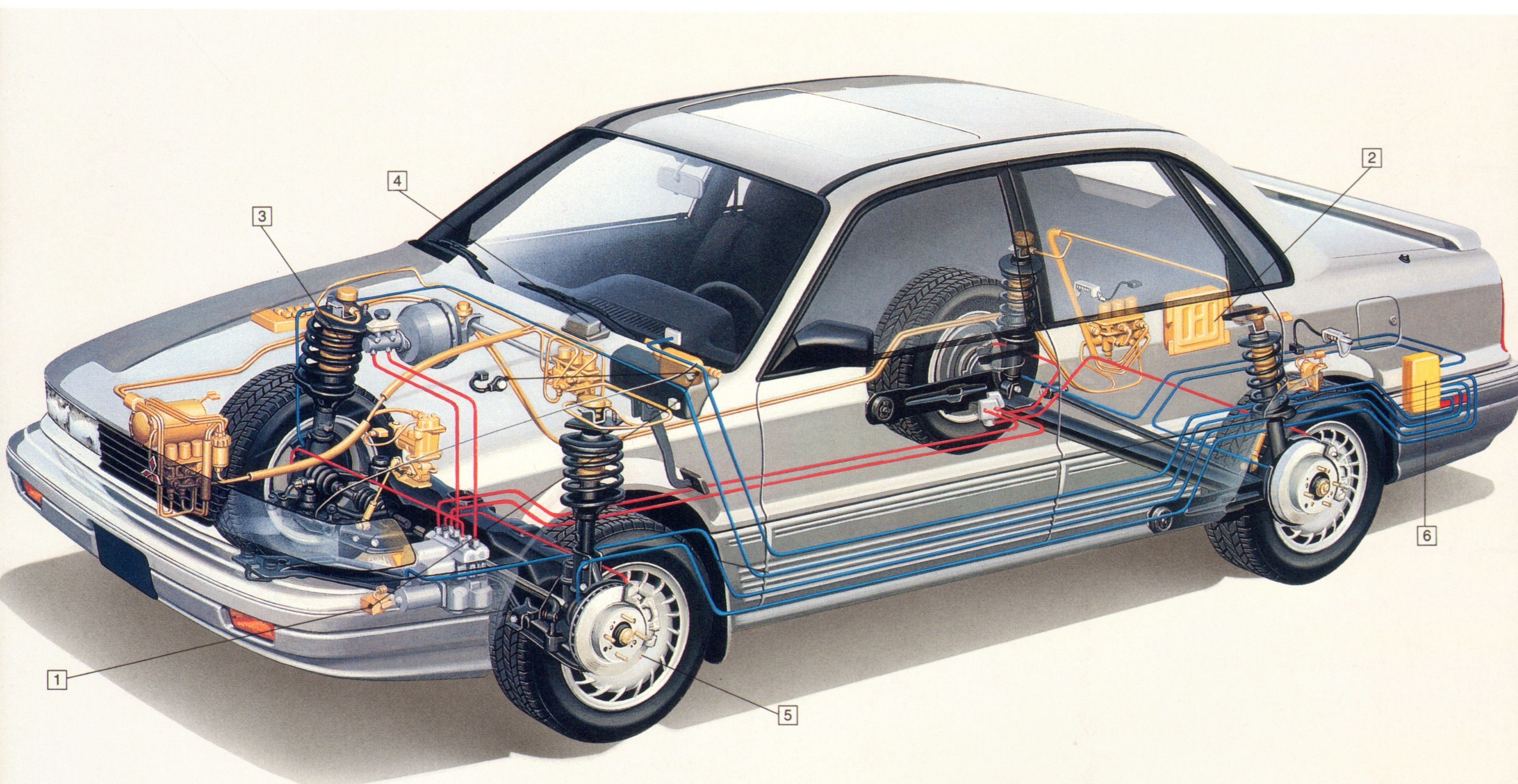
Ⓒ More power or more economy? You decide by pressing a button on the console of models equipped with automatic transmission (standard on the LS, optional on Galant).

Electronically controlled, this innovative 4-speed automatic trans-

mission with overdrive lets you delay shifts for greater acceleration (POWER mode) or lets shifts occur normally (ECONOMY) to save fuel. **Ⓓ Galant forgives when you forget.** Did you switch off the ignition before closing a power window? Before shutting the available power sunroof? The Electronic Time and Alarm Control System (ETACS IV™) on the Galant GS gives you 30 seconds grace to power them closed.

ETACS-IV automatically adjusts the variable interval of the intermittent wiper to the speed of the car, provides one-time wiper operation when you touch the washer switch and controls the washer-activated operation to prevent wipers scraping against a dry windshield.

ETACS-IV won't let you accidentally lock your keys in the ignition after the engine is off and thoughtfully delays fade-out of the interior courtesy light.



The state of the suspension art. Ⓐ Six types of sensors monitor car height, speed, steering-wheel turning rate, lateral G-force, throttle position and rear-spring pressure, and feed their data to a Ⓐ microprocessor. It instantly adjusts Ⓒ shock-damping and air-spring rates at all four wheels to keep the ride level and smooth no matter how the road squirms. Standard on the Galant GS, new Active-ECS™ does everything by itself. Or you can manually program specific ride height and damping modes from a Ⓓ control panel on the dash.

The Galant LS and Standard also boast a supple rear suspension. Its three links, lateral beam and thick stabilizer bar combine to transport you in firm, solid comfort.

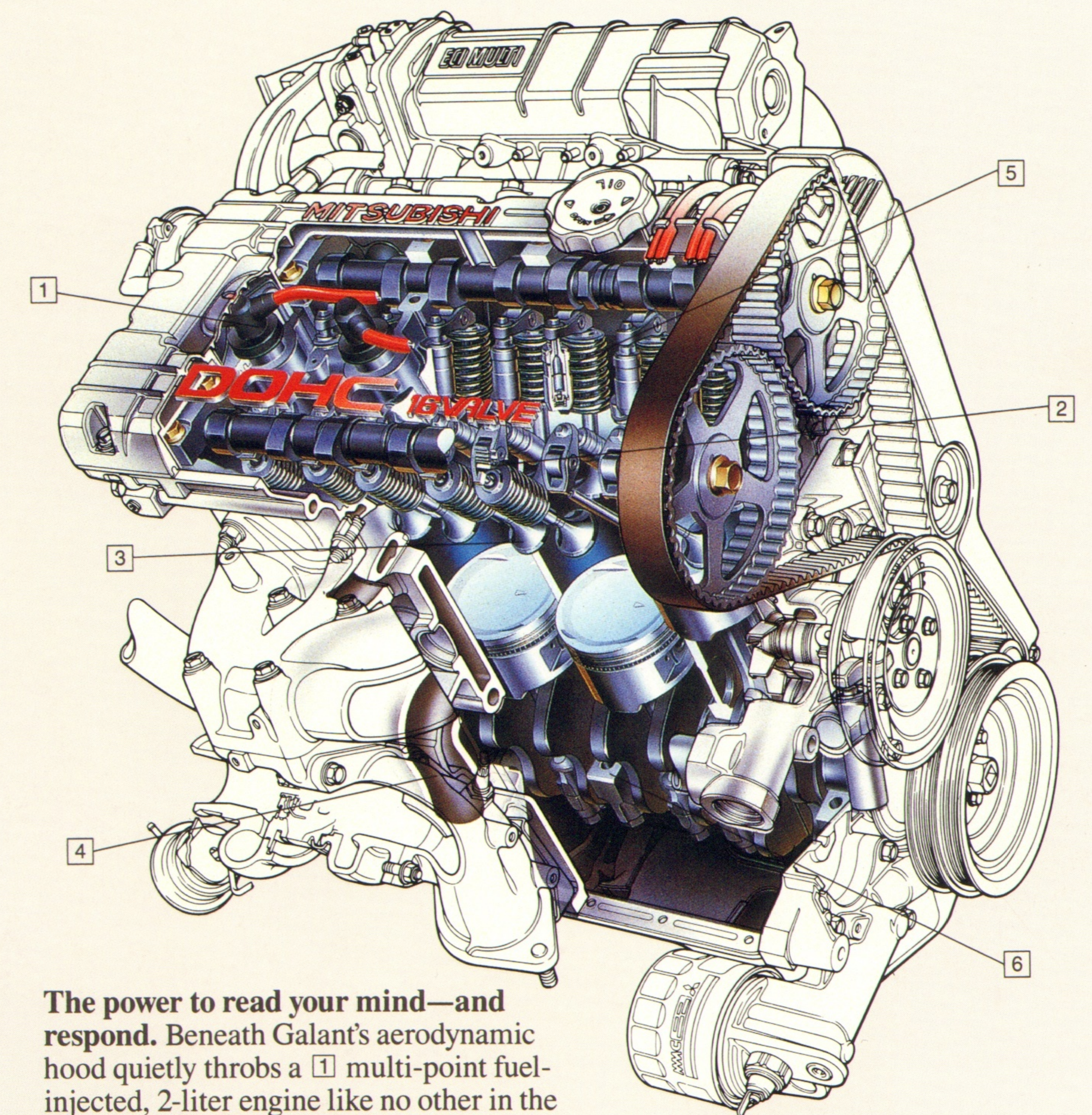
ABS: secure stopping power. To the massive power-assist brakes on all new Galant models, the GS adds the assurance of Ⓒ 10.4-inch discs at all four wheels. And an available anti-lock braking system (ABS) you might expect only on high-performance European sports sedans.

With ABS, sensors at each wheel detect loss of traction and impending brake

lockup (a danger during panic stops on wet roads).

A Ⓒ microprocessor then takes over to reduce the threat of a skid by modulating hydraulic pressure to the brake at the wheel about to lock. There's even a system override which bypasses the ABS if it senses an abnormality and reverts to non-ABS braking.

Another Mitsubishi plus: an “F-valve” that helps neutralize the disconcerting brake-pedal kickback common to ABS systems.



The power to read your mind—and respond. Beneath Galant's aerodynamic hood quietly throbs a Ⓐ multi-point fuel-injected, 2-liter engine like no other in the world. It's the first to use Ⓒ rocker arms with needle roller bearings, a Mitsubishi exclusive that greatly reduces friction loss in the valve train. Result: a smooth-running high-revving powerplant that starts fast and responds even faster.

The DOHC version of this new engine (in the Galant GS) breathes deeply through Ⓒ four valves per cylinder and a Ⓓ dual-exhaust manifold to deliver surpassing performance with surprisingly good fuel efficiency.*

And the engine's Ⓒ automatic valve lash adjusters on each of its 16 valves eliminate the periodic clearance adjustments other DOHC engines require. You save service charges.

Another Mitsubishi innovation: patented Ⓒ Dual Engine Stabilizers™, an internal counter-balancing system, neutralize engine vibrations for quieter, smoother operation.

*See EPA mileage figures in specifications section.

Galant. Sports sedan spirit, family sedan price.

The new Galant Standard dispels forever the myth that a 4-door must be a bore to be affordable. Galant is sedan, but not sedate.

Look at its flush, windswept contours. Feel its responsive 2-liter engine and corner-flattening stance. Ride in the luxury of a long wheelbase no other Japanese import in its class can beat. Relax in its well-furnished family room. And enjoy the economy of Mitsubishi quality.

Every Mitsubishi vehicle is a blend of cutting-edge engineering and timeless dedication to detail. Each rigid, high-tensile-strength-steel unibody frame is welded with the precision only today's lasers and computerized robots can produce.

And then the trained skills of dedicated production-line technicians take over. They check the quality of materials and the accuracy of tools. They test parts. Inspect subassem-

blies. Each man with the power—the *duty*—to stop the line if anything doesn't measure up to Mitsubishi's standards.

If a Mitsubishi doesn't pass the tests, it doesn't pass through the factory doors. All this care produces vehicles of proven reliability; cars and trucks that confidently carry the longest warranties in Mitsubishi history. No wonder Mitsubishi is, suddenly, the obvious choice.

Features, Options and Accessories.

A The spacious trunk stows enough luggage for a 2-week vacation for a family of five.

B Storage nooks abound: generous center console; lockable glove box; foldout bin under left dash; seatback pockets and seat undertray (LS only).

C The two-way glass sunroof with integral sunshade slides open or tilts up for ventilation. (LS and GS.)

D The available air conditioner with AC and Economy modes for fuel efficiency.

E A sound investment. An 80-watt AM stereo/FM stereo cassette with 6 speakers and 9-band graphic equalizer is optional for the Galant GS or LS. Six-speaker, electronically tuned AM/FM stereo cassette is standard on the LS and GS, optional on the Galant.

F The roof rack slides into Galant's built-in channels.

G The luggage rack fits neatly into the roof rack.

H The bike rack fits any size bike/tire combination.

I The deck rack has a 50-lb. carrying capacity.

J The remote-controlled Mitsubishi Security System features an audible entry warning alarm and adjustable shock-sensor switch.

K Sunroof wind deflector reduces noise and turbulence.

L Color-coordinated floor mats are made of tufted nylon.

M Color-keyed mud-guards keep road dirt and mud off the body.

N Galant nose mask.



**3/36
WARRANTY**

Mitsubishi's confidence in the quality of materials and reliability of craftsmanship used to build their 1989 vehicles is exemplified by the longest warranties in Mitsubishi history.

□ **36-month/36,000-mile** limited warranty that provides extensive protection for your new car or truck.

□ **36-month/50,000-mile** powertrain limited warranty (includes engine, transmission and differential).
□ **36-month/36,000-mile** electronics limited warranty.

□ **5-year** unlimited mileage anti-corrosion perforation limited warranty. For complete details on these warranties, see your Mitsubishi Motors dealer.



Diamond Care,SM Mitsubishi's comprehensive new-vehicle delivery program, ensures that your new Mitsubishi vehicle is thoroughly prepared, inspected and its features explained before you drive off.

We even make sure that the gas tank is full before you leave. And Diamond Care does not end when you leave the dealership. After your first 1,000 miles, you are invited to return to have any problem caused by normal vehicle use taken care of absolutely free.



Technical Specifications

	STD/LS	GS
ENGINE		
Model No. and Type	4G63 inline-4 cylinder	4G63 inline-4 cylinder
Valve gear	SOHC	DOHC
Valves/cylinder	2	4
Bore & stroke (mm./in.)	85 x 88 (3.35 x 3.47)	85 x 88 (3.35 x 3.47)
Displacement (c.c./cu.in.)	1997/122	1997/122
Compression ratio (:1)	8.5	9.0
Induction	Electronic multi-point fuel injection	Electronic multi-point fuel injection
Horsepower/RPM (BHP)	102 @ 5000	135 @ 6000
Torque @ RPM (lb.-ft.)	116 @ 4500	125 @ 5000
TRANSMISSION RATIOS (:1)		
4-Speed Automatic	1st/2.846, 2nd/1.581, 3rd/1.000, 4th/0.685, rev/2.176	

	STD/LS	GS
5-Speed Manual	1st/3.363 (3.083 GS only), 2nd/1.947, 3rd/1.285, 4th/0.939, 5th/0.756, rev/3.083	
Final drive ratio	3.666 (5M) 3.562 (4A)	4.187
SUSPENSION—STANDARD AND LS MODELS		
Front	Independent with MacPherson struts, coil springs, 0.68-in. stabilizer bar	
Rear	Three-link twist beam with trailing arms, coil springs, telescopic shock absorbers, 0.79-in. stabilizer bar	
SUSPENSION—GS MODEL (ACTIVE-ECS™)		
Front	Independent, electronically controlled coil/air springs and MacPherson struts, w/automatic self-leveling and adjustable valving, 0.75-in. stabilizer bar	
Rear	Three-link twist beam with trailing arms. Elec- tronically controlled coil/air springs and telescopic shock absorbers with automatic self-leveling and adjustable valving, 0.79-in. stabilizer bar	

	STD/LS	GS
DIMENSIONS (mm/in.)		
Wheelbase	2600/102.4	2600/102.4
Overall Length	4670/183.9	4670/183.9
Overall Width	1695/66.7	1695/66.7
Overall Height	1360/53.5	1410/55.5
Track		
Front	1460/57.5	1460/57.5
Rear	1450/57.1	1450/57.1
INTERIOR DIMENSIONS (mm/in.)		
Front	STD/LS	GS
Head Room	980/38.6	990/39.0
w/sunroof	930/36.6 (LS)	940/37.0
Leg Room	1065/41.9	1065/41.9
Shoulder Room	1390/54.7	1405/55.3
Hip Room	1410/55.3	1405/55.3
Rear		
Head Room	950/37.4	950/37.4

	STD/LS	GS
Leg Room	915/36.0	915/36.0
Shoulder Room	1385/54.5	1390/54.7
Hip Room	1405/55.3	1330/52.4
Trunk Volume Index (cu.ft.)	12.34 (STD) 10.54 (LS)	10.54
Interior Volume Index (cu.ft.)	106.1 (STD) 105.4 (LS)	105.4

WEIGHT (Curb Weight. lbs.)		
Standard (5M)	2601	
Standard (4A)	2645	
LS (4A)	2733	
GS (5M)	2799	

STEERING		
	STD/LS	GS
Rack and pinion	S	S
Variable power assist	S	

	STD/LS	GS
EPS™ variable with sport/normal select		S
Overall steering ratio	17.8	17.8
Turning Circle, Curb to Curb (ft.)	34.8	34.8

BRAKES		
	STD/LS	GS
Front	Vented disc	Vented disc
Rear	Drums	Solid disc
ABS (anti-lock braking)		OPT.
Diameter Front/Rear (in.)	10.4 / 8.0	10.4/10.4
Total Brake Swept Area (sq. in.)	268	381

ELECTRICAL SYSTEM		
Battery	12-volt, maintenance free	
Ignition System	Electronic	

Alternator Rating (amps)	75
--------------------------	----

FUEL SYSTEM	
Type Fuel Required	Unleaded
Fuel Pump Type	Electronic
Fuel Tank Capacity (U.S. gal)	15.9

WHEELS & TIRES			
	STD	LS	GS
Tire Size	185/70SR14	185/70SR14	195/60HR15
Tire Type	All season radials	All season radials	Performance radials
Wheel Size	5.5JJ x 14	5.5JJ x 14	6JJ x 15
Center Cap	S		
Full Cover	OPT.	S	
Aluminum Alloy			S

Features & Options

	STD	LS	GS
MECHANICAL/FUNCTIONAL			
2.0-liter 4 cyl. SOHC	S	S	
2.0-liter 4 cyl. 16-valve DOHC			S
ECI™ electronic multi-point fuel injection	S	S	S
Dual Engine Stabilizers™	S	S	S
Roller-rocker arms	S	S	S
Electronic ignition system	S	S	S
Distributorless electronic ignition			S
Automatic valve lash adjusters	S	S	S
5-speed manual overdrive transmission	S		S
4-speed automatic overdrive transmission with power/economy modes	O	S	
On-board diagnostic system	S	S	S
Stainless steel exhaust system	S	S	S
Power assist front disc/rear drum brakes	S	S	
Power assist 4-wheel disc brakes			S
4-wheel anti-lock brake system (ABS)			O
Active-ECS™ electronically controlled suspension			S
Variable power-assist steering	S	S	S
EPS™ electronic power steering			S
Stabilizer bar, front and rear	S	S	S
Maintenance-free battery	S	S	S
36-month/36,000-mile New-Car Limited Warranty*	S	S	S
36-month/50,000-mile Powertrain Limited Warranty*	S	S	S
5-year Unlimited Mileage Anti-Corrosion Perforation Limited Warranty*	S	S	S

COMFORT & CONVENIENCE

Illuminated ashtray/lighter	S	S	S
Large console w/armrest, storage, and dual cupholder		S	
Large console w/cupholder & storage area	S		S

	STD	LS	GS
Air conditioning	O	O	O
Tilt steering	S	S	S
Full function cruise control		S	S
Trunk & glove compartment lights	S	S	S
Day/night rearview mirror	S	S	S
Remote hood/trunk/fuel filler door releases	S	S	S
Child protection rear door locks	S	S	S
Visor vanity mirror	S	S	S
Driver's side footrest	S	S	S
Keyless door locking	S	S	S
Power slide/tilt sunroof		O	O
Dual coat hooks	S	S	S
Rear heater duct		S	S

INSTRUMENTATION & CONTROLS

ETACS IV™ including: Speed variable wipers. Washer-activated wiper operation. Wiper mist cycle. Fade-out dome lamp. ¹ Power door lock-out. Ignition keylight. Power window & sunroof w/30-sec. power-off delay. Door ajar warning. Parking brake “On” warning.			S
Digital quartz clock	S	S	S
Rear window defroster w/timer	S	S	S
Dual tripmeters w/reset	S	S	S
Flash to pass feature	S	S	S
Fixed intermittent wipers	S		
Variable intermittent wipers		S	S ²
Power windows		S	S
Power door locks		S	S
Tachometer	S	S	S
Coolant temperature/fuel level gauge	S	S	S
Warning lights: Brakes. Battery charge. Low oil pressure. Door/trunk ajar. Low fuel.	S	S	S

	STD	LS	GS
Electronically tuned AM/FM stereo radio w/cassette + 6 spkrs	O	S	S
Electronically tuned AM stereo/FM stereo radio w/cassette + 6 spkr & graphic equalizer		O	O
Automatic power antenna		S	S

VISIBILITY

Tinted glass	S	S	S
Composite quad Halogen headlamps	S	S	S
Automatic-off headlamp system	S	S	S
Dual manual remote sideview mirrors	S		
Dual power remote sideview mirrors		S	S
Color-keyed mirrors (*except Tahoe Blue)		S [†]	

SEATING & TRIM

Reclining front bucket seats	S	S	S
4-way adjustable-driver/passenger seats	S	S	S
5-way adjustable driver's seat			S
6-way adjustable driver's seat		S	
Child car seat rear anchors	S	S	S
Rear seat center armrest w/trunk access		S	S
Highback rear seat	S	S	S
Passenger underseat tray		S	
Seatback pockets		S	
Cutpile carpeting (cabin)	S	S	S
Cloth insert door trim w/carpeted lower section	S	S	S
Cloth upholstery	S		S
Velour upholstery		S	
Passenger assist grips	S	S	S
Door armrests front	S	S	S
Door armrests rear	S	S	S

EXTERIOR

Bodyside moldings. Black	S	S	
--------------------------	---	---	--

	STD	LS	GS
Ribbed side panels. Color-keyed			S
Bright tailpipe, dual outlet			S
Locking fuel filler door	S	S	S
Color-keyed bumpers	S	S	S
Mudguards, front			S
Roof rack carrier moldings	S	S	S
Rear spoiler			S
Styled steel wheels/bright center cap	S		
Full wheel covers	O	S	
Aluminum alloy wheels			S

EXTERIOR COLORS/INTERIOR TRIM

Summit White/Dark Gray, Light Gray	S	S	S
Selbia Black/Dark Gray, Light Gray	S	S	
Baja Red/Dark Gray, Light Gray	S	S	
Ascot Silver/Dark Blue	S	S	
Ascot Silver/Dark Gray, Light Gray			S
Fargo Brown/Brown, Sand	S	S	
Tahoe Blue/Dark Blue	S	S	
Tahoe Blue/Dark Gray, Light Gray			S
Palermo Gray/Brown, Sand	S	S	
Palermo Gray/Dark Gray, Light Gray			S

S = Standard O = Optional
¹Deleted if equipped with sunroof. ²Speed variable.

*For complete details, ask your salesperson for a copy of the limited warranty.
**NOTE: EPA figures were not available at the time of this printing. See your Mitsubishi Motors Dealer for mileage figures.
Technical data, features, options and other equipment shown in this catalog are based on the latest available information at the time of printing and are subject to change without notice. Some vehicles are shown with optional equipment. For further information on the additional options and accessories, contact your Mitsubishi Motors Dealer. Availability at dealers of vehicles with specific features may vary. Headlights, parking lights and fog lights on vehicles lighted for illustration purposes only.
Part #MMSA-ADV-5407. Litho in U.S.A. ©1988 Mitsubishi Motor Sales of America, Inc.



Mitsubishi. Suddenly, the obvious choice.



DEZO'S GARAGE



Call 1-800-447-4700 for your nearest Mitsubishi Motors Dealer.