

1993 Eagle 2000 GTX



Room For Five Never Drove Like This.

Sprightly performance and family-size room make the Eagle 2000 GTX anything but ordinary. Ergonomically sound and technically proficient, its sport underpinnings and long list of standard features combine to provide an extraordinary driving experience.

Eagle 2000 GTX. Not Intended For The General Public.





C O N T E N T S

Ride and Handling	2
Ergonomics	4
Standard Features and Options	6
Commitment	8

ABOUT THIS CATALOGUE. SINCE THE TIME OF PRINTING, SOME OF THE INFORMATION YOU'LL FIND HERE MAY HAVE BEEN UPDATED. SEE YOUR DEALER FOR DETAILS.

RIDE AND HANDLING

Though The Road May Twist And Turn, We Designed It To Keep You In Touch.

Sophisticated and technically proficient, the Eagle 2000 GTX puts you in the driver's seat by keeping you in firm contact with the road.

Its independent front suspension features MacPherson struts and an anti-sway bar to minimize vehicle pitch and maximize handling. In the rear, concentric coil spring and shock absorber assemblies provide a smooth, stable ride. Power brakes, power rack-and-pinion steering, and 14-inch wheels with all-season radial tires provide an extra measure of responsiveness. For those in a more sporting mood, the Premium model with optional Sport Appearance Package adds painted 15-inch aluminum wheels and extra-wide P195/60HR15 all-season performance-rated tires.

The optional Sport Appearance Package on 2000 GTX Premium models includes a colour-keyed rear spoiler, bumper and lower bodyside cladding, black windshield moulding, painted aluminum wheels, and low profile tires.



Eagle 2000 GTX features a close-ratio 5-speed manual overdrive transmission (pictured) or an electronically controlled 4-speed automatic transmission with a Power/Economy switch and overdrive lockout button (standard on 2000 GTX Premium; optional on Base).

EAGLE 2000 GTX



Eagle 2000 GTX

Power is supplied capably by a 2.0 litre 16-valve SOHC Balance-Shaft engine, standard on both models, that delivers 90 kW (120 hp) @ 6000 rpm and 163 N·m (120 lb-ft) @ 4750 rpm.



Part of the 2000 GTX Premium Sport Appearance Package, painted 15-inch aluminum-alloy 8-spoke wheels add to its performance credentials.

ERGONOMICS

Our Attention To Detail Is Obvious As Soon As You Take Your Seat.

Driving sophistication means nothing if the environment from which to enjoy it is unbearable. With the Eagle 2000 GTX, driver control and confidence are encouraged by the thoughtfully designed interior.

Standard features include a tilt steering wheel, variable intermittent windshield wipers, rear defroster, cut-pile carpeting, full floor-mounted centre console, and full-fabric reclining bucket seats in front. From these plush surroundings, controls are logically placed and within easy reach of the driver. Included as part of the full analogue instrumentation are a speedometer, tachometer, twin trip odometers, digital clock, and warning lights for fuel empty, engine check, oil pressure, brake fluid, and door-ajar.

Sport, full-face velour reclining bucket seats are standard on 2000 GTX Premium. The driver's seat includes a 6-way adjustment, adjustable lumbar support, and seat-back pockets.

Every 2000 GTX model features a fully carpeted trunk area and, on Premium, an access panel behind the rear centre armrest to facilitate carrying long items such as skis. Trunk space of up to a generous 348 litres (12.3 cu. ft.) is available.



EAGLE 2000 GTX



Eagle 2000 GTX
Premium interior

2000 GTX Premium offers standard power windows and door locks, dual power mirrors, speed control, rear seat heater ducts, and an electronically tuned AM/FM MPX cassette six-speaker audio system.

Among other options you can select are air conditioning and, on Premium, a power sunroof.



Fingertip control is at the touch of a button with the optional electronically controlled 4-speed automatic transmission (standard on Premium) that lets you choose two shift modes: "Economy" or "Power" for greater acceleration.

STANDARD FEATURES AND OPTIONS

2000 GTX PREMIUM		
2000 GTX		
FUNCTIONAL		
BATTERY Maintenance-free, 12-volt, heavy-duty	S	S
BRAKES Power front ventilated disc/rear drum	S	S
CORROSION PROTECTION Extensive use of galvanized steel and lower body anti-chip coating	S	S
ENGINE 2.0 litre I-4 overhead camshaft, four valves per cylinder, electronic multi-point fuel injection, balance shaft engine stabilizers and roller-rocker arm features; 90 kW (121 hp) @ 6000 rpm and 163 N-m (120 lb-ft) of torque @ 4750 rpm	S	S
Dual-coil distributorless ignition system, computer-controlled	S	S
FRONT-WHEEL DRIVE Transverse-mounted	S	S
FUEL TANK 60 litre (13.2 Imp. gal.)	S	S
SAFETY FEATURES Rear door child-protection locks	S	S
Child seat restraint anchor provision	S	S
Valet trunk lockout	S	S
Dual hood latches	S	S
Flash-to-pass "optic-horn" feature	S	S
Interlock safety system on starter/clutch (manual trans.)	S	-
Shift lock system (auto. trans.)	S	S
Soft padded instrument panel with designed-in safety features	S	S
SPEED CONTROL Electronic with accelerate and resume features	O	S
STEERING Variable hydraulic power rack-and-pinion	S	S
SUSPENSION Front—Independent sport-tuned; MacPherson struts with coil springs, lower control arms, and stabilizer bar	S	S
Rear—Semi-independent sport-tuned three-link flex arm beam type coil springs	S	S
TIRES P185/70SR14 all-season black sidewall steel-belted radials	S	S
P195/60HR15 all-season black sidewall performance steel-belted radials (only available and included in Sport Appearance Package)	-	O
Compact temporary spare	S	S
TRANSMISSION 5-speed manual with overdrive	S	-
4-speed automatic with overdrive and Economy/Power feature	O	S
WHEELS 14" x5.5" styled steel with bright centre cap	S	-
14" x5.5" steel with full luxury wheel covers	O	-
14" x5.5" aluminum alloy, full face style	-	S
15" x6" aluminum alloy, spoke style, painted (only available and included in Sport Appearance Package)	-	O
WINDSHIELD WIPERS With variable intermittent feature	S	S
EXTERIOR		
BUMPERS 8-km/h (5-mph), full colour-keyed with bright insert	S	S
DAYTIME RUNNING LIGHTS	S	S
GLASS Tinted, all windows	S	S
GRILLE Black	S	S

2000 GTX PREMIUM		
2000 GTX		
HEADLAMPS Aero-style halogen parabolic-type with auto-off system	S	S
MIRRORS Dual, remote-control, black	S	-
Dual, power remote-control, colour-keyed	O	S
MOULDINGS Windshield and rear window, bright	-	S
Windshield and rear window, black	S	-
Bodyside, colour-keyed with bright insert	S	S
SPORT APPEARANCE PACKAGE Includes colour-keyed rear spoiler, bodyside cladding and bumpers; black window surround and windshield mouldings; argent-painted 15" spoke aluminum wheels; P195/60HR15 all-season black sidewall touring tires	-	O
SUNROOF Power-operated	-	O
STOP LAMP Centre, high-mounted	S	S
TAILLAMPS Wraparound style, bright surround moulding	S	S
INTERIOR		
AIR CONDITIONING** With switchable compressor operation for Economy or Maximum Cooling	O	O
AUDIO SYSTEM AM/FM electronically tuned multiplex cassette with six speakers (power antenna on Premium GTX model)	O	S
Graphic equalizer feature	-	O
CARPETING Passenger and cargo areas	S	S
CONSOLE Floor-mounted, full-length, with storage box	S	-
Floor-mounted with armrest, dual box and cup holder	-	S
COURTESY LIGHTS Door-mounted (four)	-	S
DEFROSTER Rear window, electric	S	S
DOOR TRIM Cloth with carpeted inserts and armrests	S	S
HEATER With heater ducts for front and rear seat passenger areas (rear ducts on Premium models only)	S	S
INSTRUMENTATION Full analogue instrumentation including speedometer, tachometer, twin trip odometers, digital clock, warning lights for low fuel, check engine, oil pressure, brake fluid, and door ajar	S	S
MIRRORS Rearview with day/night feature	S	S
Passenger-side visor vanity (illuminated on Premium GTX model)	S	S
POWER DOOR LOCKS	O	S
POWER WINDOWS With one-touch-down feature	O	S
REMOTE-CONTROL RELEASE Fuel door, hood and trunk, with valet lock-out security feature	S	S
SEATS Front—Full face fabric reclining low-back bucket seats with two-way adjustable headrests; Rear—fixed bench seat	S	-
Front—Full-face fabric velour sport bucket seats with adjustable headrests and six-way driver/four-way passenger adjustments including height, reclining features and driver's seat height and lumbar adjustment; Rear—Highback bench seat with fold-down centre armrest	-	S
Front seatback pockets	-	S
Trunk access, through rear seat armrest opening	-	S
SEAT BELTS Front—Two three-point shoulder/lap belts; Rear—Outboard three-point shoulder/lap belts, centre lap belt	S	S
STEERING WHEEL Two-spoke soft feel	S	S
Tilt steering column	S	S
TRUNK AREA LIGHT	S	S

COLOUR & TRIM	2000 GTX			2000 GTX PREMIUM		
Seat Material	Full Cloth			Velour Cloth-Faced		
Interior Trim Colour	Dark Blue	Dark Gray	Dark Brown	Dark Blue	Dark Gray	Dark Brown
EXTERIOR COLOURS						
Light Beige Metallic			•			•
Black		•			•	
Dark Blue Pearl Coat	•			•		
Medium Gray Pearl Coat		•			•	
Dark Mauve Pearl Coat			•			•
Dark Red Pearl Coat		•			•	
Silver Metallic	•			•		
White		•			•	
Medium Blue Metallic	•			•		

Note: All Metallic and Pearl Coat colours are clearcoat finish.

DIMENSIONS (Base Vehicle Dimensions millimetres (inches) unless otherwise specified)

EXTERIOR	
Wheelbase	2600 (102.4)
Overall Length (to P215 tire)	4670 (183.9)
Track, Front	1460 (57.5)
Rear	1450 (57.1)
Overall Width	1695 (66.7)
Overall Height	1360 (53.5)
TURNING DIAMETER	
Curb-to-Curb m (ft.)	10.6 (34.8)
INTERIOR	
Seating Capacity	5
Headroom—Front	980 (38.6)
Rear	950 (37.4)
Legroom—Front	1065 (41.9)
Rear	915 (36.0)
Shoulder Room—Front	1390 (54.7)
Rear	1385 (54.5)
Hiproom—Front	1405 (55.3)
Rear	1405 (55.3)
Trunk Volumes litres (cu.ft.)	
2000 GTX	348 (12.3)
Premium	297 (10.5)
CURB WEIGHT kg (lb.)	1180 (2600)

THIS CATALOGUE MAY NOT LIST ALL STANDARD AND OPTIONAL EQUIPMENT ITEMS; SOME OPTIONS ARE AVAILABLE ONLY IN COMBINATION WITH OTHERS AND SOME EQUIPMENT MAY BE SUBJECT TO AVAILABILITY RESTRICTIONS. SEE YOUR DEALER FOR DETAILS.

C O M M I T M E N T

Where You Can Be Something Nobody Else Is: Yourself

From the moment you enter an Eagle dealership, you won't be treated just like anyone else. Because, frankly, we know the reason you choose to drive an Eagle is precisely because you're not like everyone else.

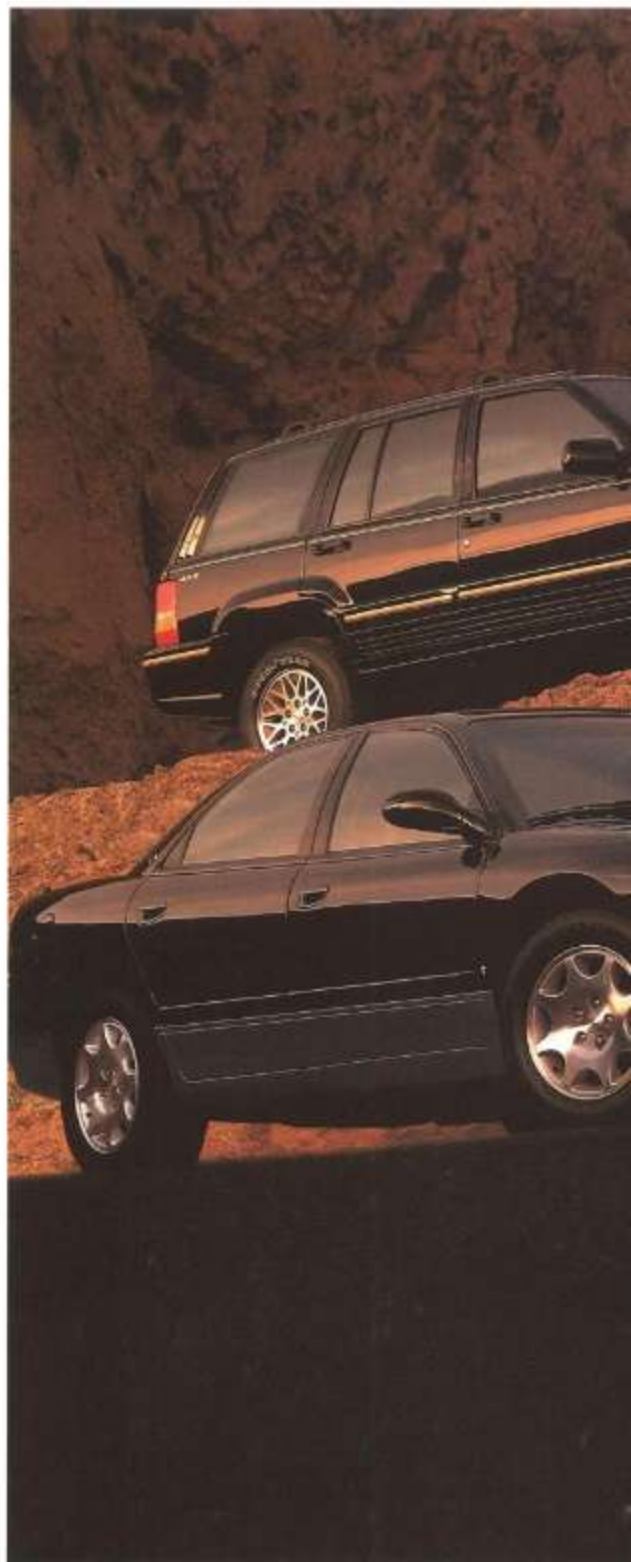
Knowing that, we've created Customer One, a comprehensive dealership program dedicated to your total satisfaction. So whether you need vehicle specifications, pricing information, or an appointment for service, you will benefit from the attention given by every member of our dealership family.

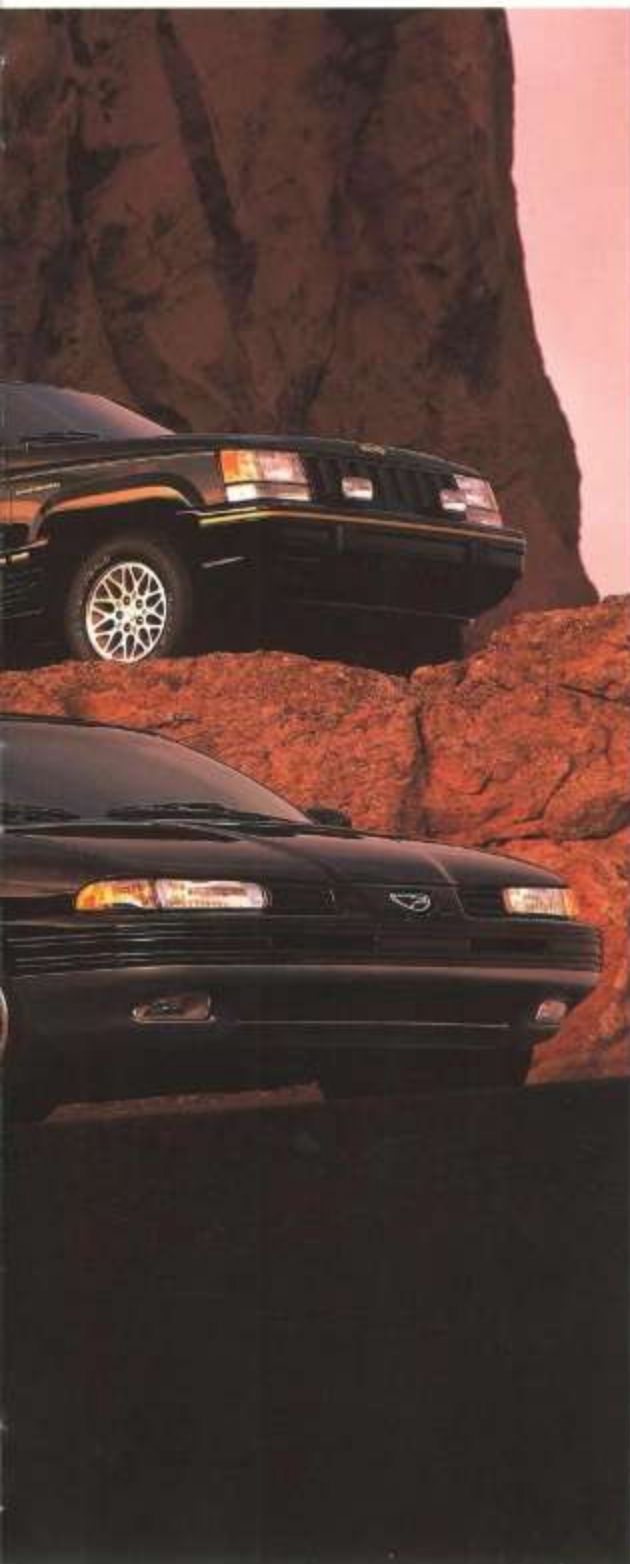
With your choice of an Eagle model comes the industry's first owner's choice protection plan. Choose between a 1-year/20,000 kilometre basic vehicle coverage combined with a 7-year/115,000 kilometre powertrain warranty, or a 3-year/60,000 kilometre bumper-to-bumper warranty. Your choice and with no deductible. See your dealer for details.

Additional peace-of-mind protection for Eagle vehicle owners is available through optional Chrysler Service Contracts. These services are available in a variety of time and distance combinations to meet your needs.

Chrysler Credit offers a variety of finance

(Top) Jeep Grand
Cherokee Limited
and (Bottom) new
Eagle Vision TSi.





programs that can help make your new Eagle vehicle even more affordable. These flexible finance and lease programs can be tailored to suit your budget and lifestyle. They include Advantage: Gold Key Lease, Chrysler Leasing System, College/University Graduate Plans, Retail Financing, and other special payment plans. Ask your salesperson for details.

Your ownership experience can be further enhanced by your ability to choose from a variety of Mopar accessories designed to help equip your vehicle to your individual needs. Many of these accessories can be installed prior to the delivery of your new vehicle. Ask your dealer for information on genuine Mopar accessories.

Through its Physically Challenged Assistance Program, Chrysler Canada Ltd. offers a cash reimbursement of up to \$500 for the purchase and installation of adaptive driving or passenger equipment on a new 1993 Jeep or Eagle vehicle.

Specifications, descriptions and illustrative material contained herein are based on authorized information. Although specifications, descriptions and illustrations were believed to be correct at the time this publication was approved for printing, accuracy cannot be guaranteed. Chrysler Canada Ltd. reserves the right to discontinue models or options at any time or change specifications and materials, colours, equipment, or design without notice and without incurring obligation.

Some equipment may not be exactly as illustrated in this publication. Some of the illustrative material contained herein may show equipment that is not standard and is available only at extra cost, as factory-installed or dealer-installed. Equipment referred to as available or optional may be at extra cost. Some options are required in combination with other options. For the price of the model with the equipment you desire or verification of specifications and equipment available contained herein, see your Chrysler Canada Ltd. dealer.

Some of the items shown on the vehicles in this publication may be available only through retail organizations and establishments not connected with Chrysler Canada Ltd. Availability, price, quality and durability of these items rest solely with the respective manufacturers and their sales organizations, and Chrysler Canada Ltd. assumes no responsibility for their availability or their use.



CHRYSLER LEASING



mopar autogar

Quality...Value...
Performance Proven
There is no such thing!



Physically
Challenged
Assistance
Program



Contains a
minimum of 10%
post-consumer waste.

Printed in Canada.



Eagle 2000 GTX.
Not Intended For The General Public.



Contains a minimum of 10% post-consumer waste.
Printed in Canada. Item No. 520-3-J-583E