



Mondeo



Introduction	1
Mondeo Sedan	4
Interior Design	6
Mondeo Hatch	8
Mondeo Wagon	10
Engineering	12
Safety and Security	13
Colours & Trims	14
Specifications	15
Ford Approved Accessories	16
Fordcars	16



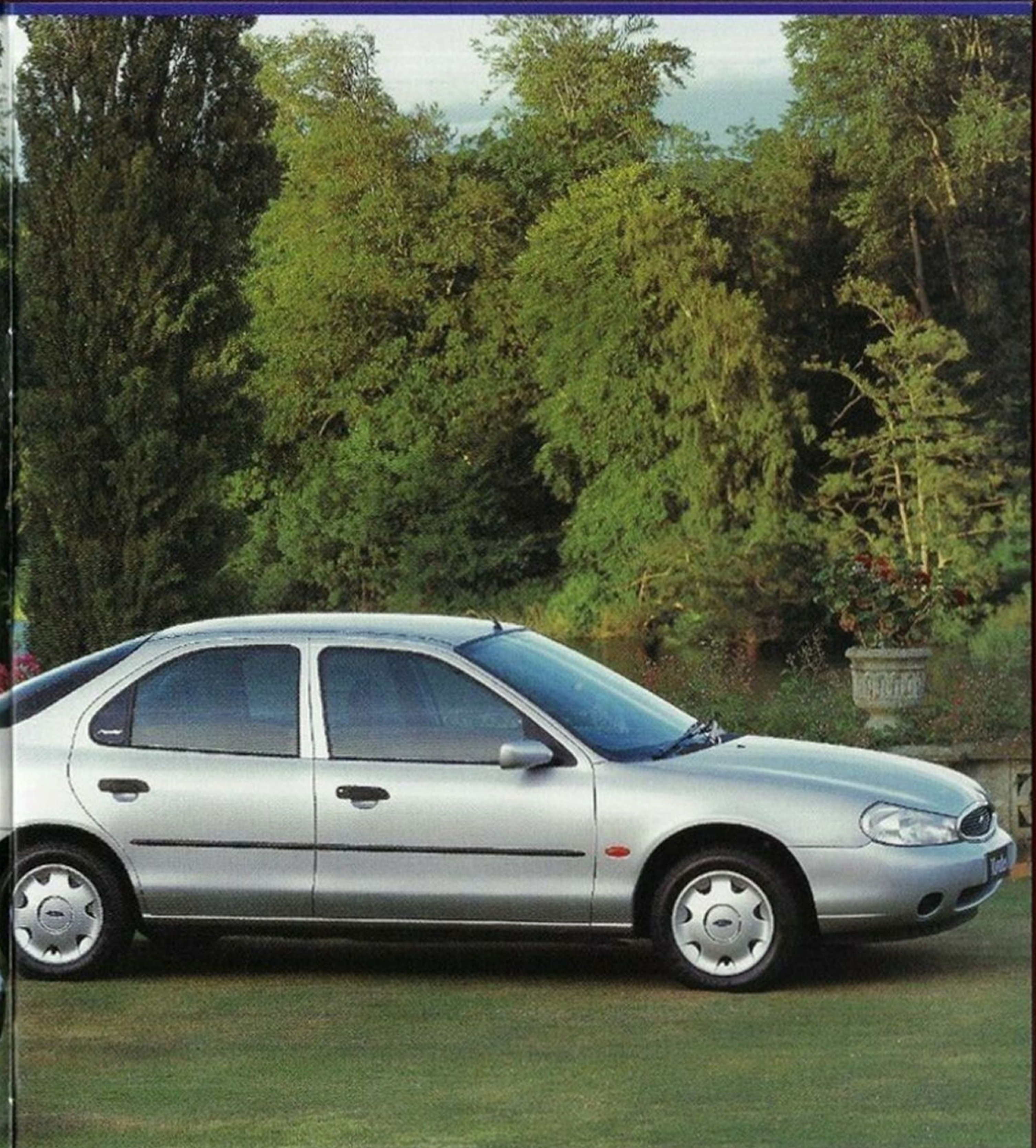
Mondeo



1 When Ford first introduced the Mondeo, it took Europe by storm, winning more than 20 international motoring awards, including 1994 European Car of the Year. The accolades continued here in Australia. Now, with the arrival of the new Mondeo, the award winning design is refined and enhanced. The driving pleasure which current Mondeo drivers find so enjoyable is even more in evidence, thanks to the precision of its advanced suspension and



2 steering systems. Its already impressive reputation for safety and security is taken to a new level. And a fresh exterior and improved interior design add to its European sense of proportion and style. Drive Mondeo and you'll discover a medium-sized car that's about as far from middle of the road as you can go. As you'll quickly realise when you get behind the wheel, this is a world car that's perfectly at home on the streets and highways of Australia.



3 Mondeo

MONDEO SEDAN

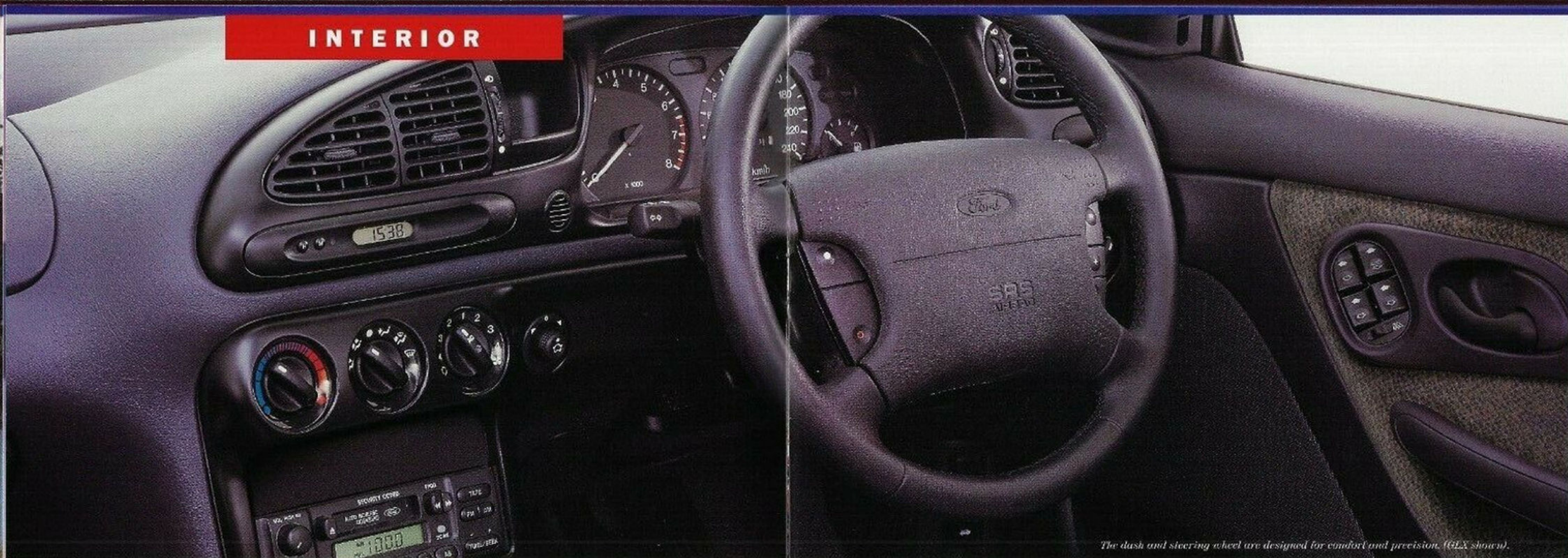


Look closely at the Mondeo LX and GLX Sedans and the competition seems suddenly outclassed. Both give you the choice of responsive 5-speed manual or optional smooth 4-speed automatic.

Both provide the assurance of standard driver's airbag, and optional passenger airbag and ABS brakes. Both offer an advanced 2 litre Zetec engine with plenty of power. And both give you the convenience of delayed courtesy lights, operated by

all doors, and heated exterior mirrors. And, of course, both have the sleek new body style that's turning heads all over Europe. Opt for the GLX Sedan and you'll enjoy additional well-considered features to make your drive even more of a pleasure: cruise control, front and rear electric windows, remote control keyless entry, powered height adjustment for the driver's seat, and front seat lumbar adjustment. Whatever you decide, you'll find new Ford Mondeo Sedan is a truly European car, built to exceed the highest standard, and well within reach of Australians who appreciate the joy of driving.

INTERIOR



The dash and steering wheel are designed for comfort and precision. (GLX shown).

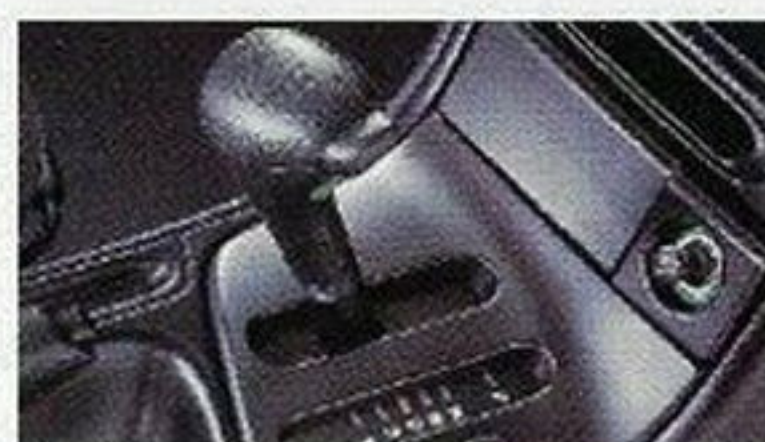
Mondeo's interior shines with European attention to detail. The new dash, including steering wheel, air vents and control switches, is more ergonomic and intuitive to use. And the front seats have been redesigned to provide extra support and maximum rear leg room. Cup holders, four-speaker AM/FM stereo radio-cassette, air conditioning and pollen filter are just some of the standard features that make Mondeo outstanding.



Electric height adjustable driver's seat is standard on Mondeo GLX Sedan and GLX Hatch.



Overhead map lights swivel to place a beam of light where you need it on Mondeo GLX Sedan and GLX Hatch.



Choose from responsive 5 speed manual or optional smooth 4-speed automatic.



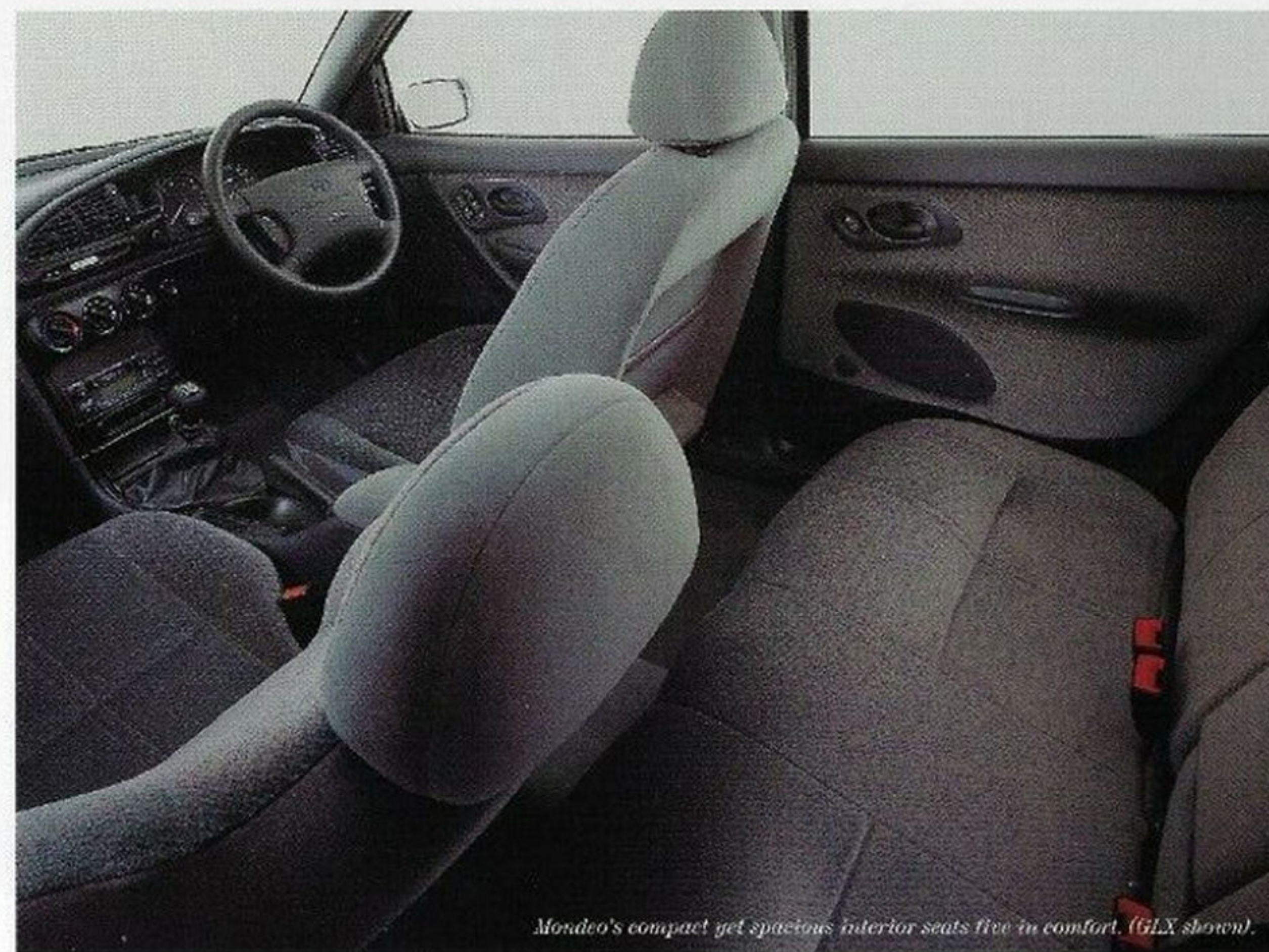
An air-intake pollen filter is designed to remove all airborne particles larger than 3 microns.



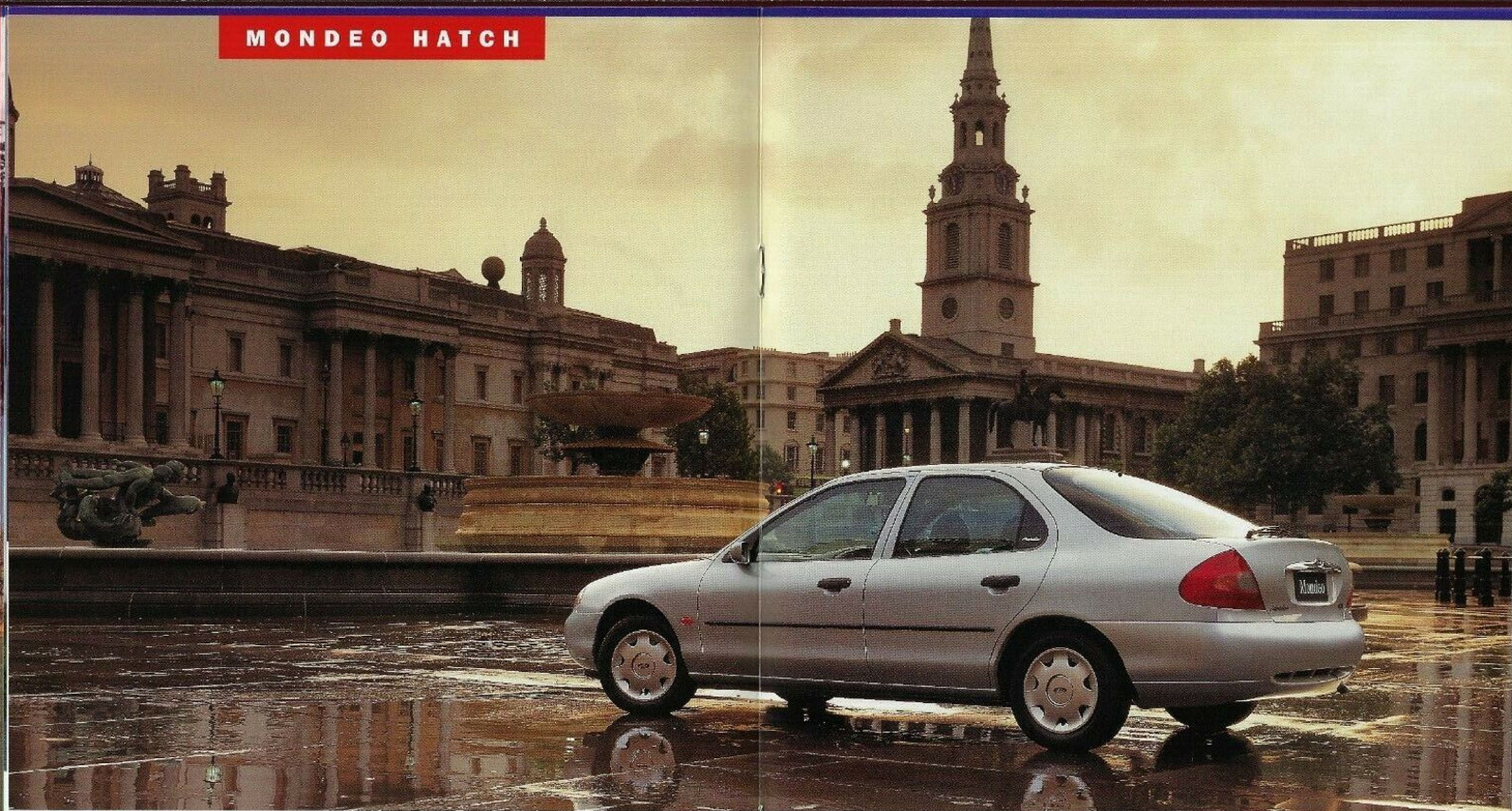
Power windows are standard on Mondeo GLX Sedan and GLX Hatch.



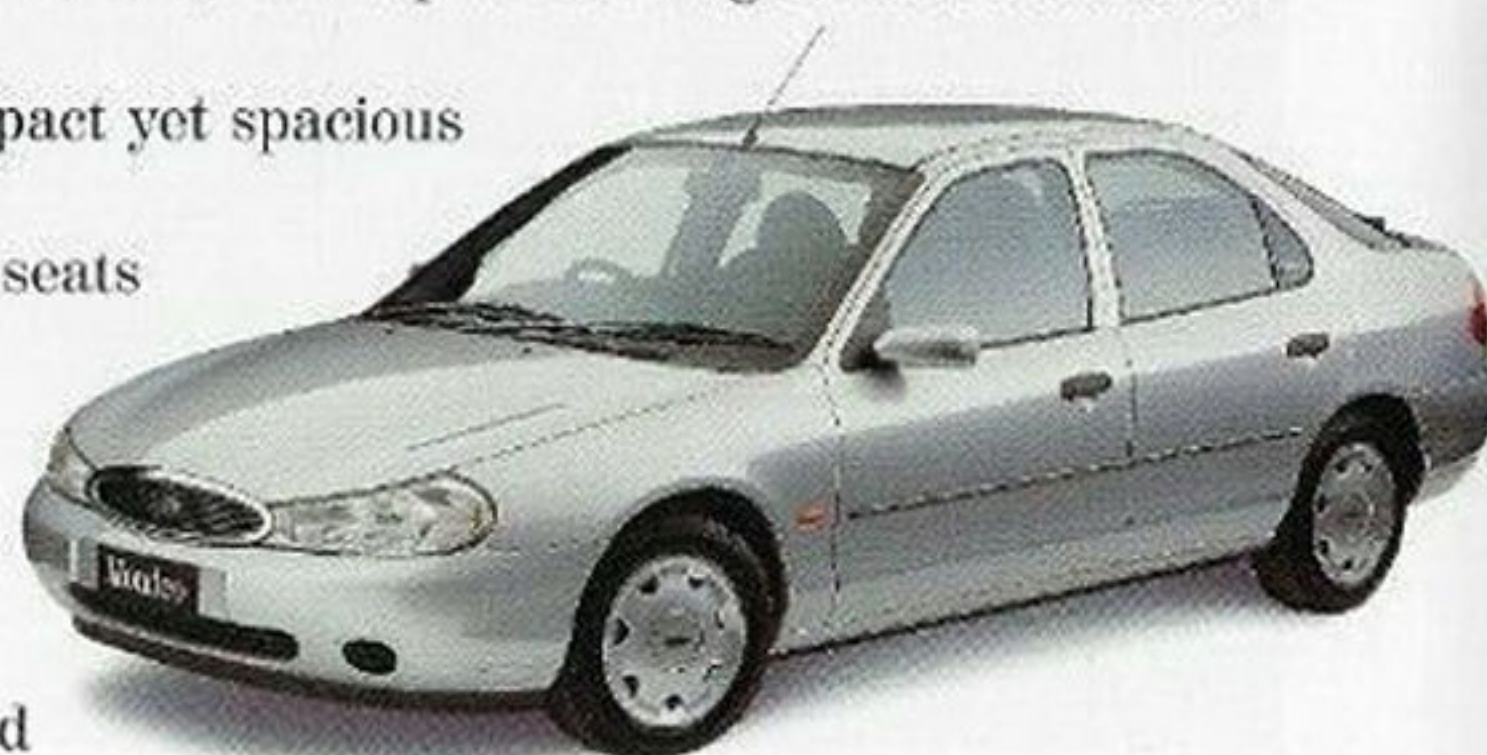
The 60/40 split-fold rear seat handles awkward loads in style.



Mondeo's compact yet spacious interior seats five in comfort. (GLX shown).

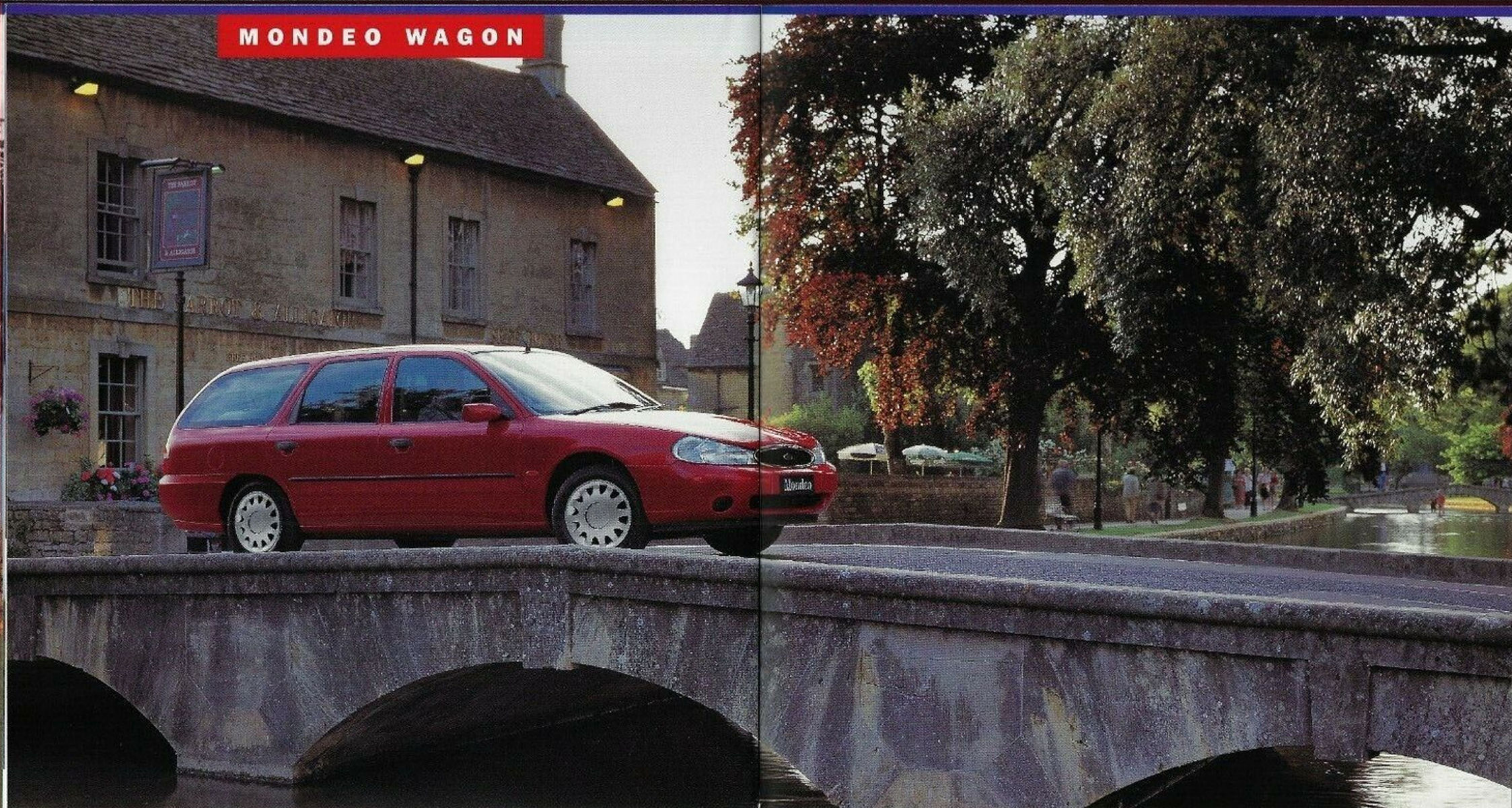


Looking for the practicality of a five-door hatchback, with top-of-the-range comfort? Look no further than the Mondeo GLX Hatch. Its compact yet spacious design is very accommodating. With the rear seats folded down, your carrying space increases from 470 to 1300 litres. While the 60/40 split rear seat gives you room for odd-shaped



loads, while maximising seating capacity. But Mondeo Hatch is far more than a handy hatchback. Its four-wheel fully independent suspension and advanced 2 litre Zetec engine make for sporty performance and responsive handling. You may find you enjoy driving like never before. And, naturally, Mondeo Hatch has everything a driving enthusiast could ask for: driver's airbag, four-wheel disc brakes, power steering, power windows, air conditioning and cruise control. The only thing missing is you.

MONDEO WAGON



The Mondeo LX Wagon gives you all the features of the LX Sedan with one extra – more room.

The Mondeo is undeniably one of the most stylish wagons on the road. And with a huge 1650 litres of space behind the front seats, it's also one of the most spacious. The smooth, sure-footed front-wheel drive and four-wheel fully independent suspension means you

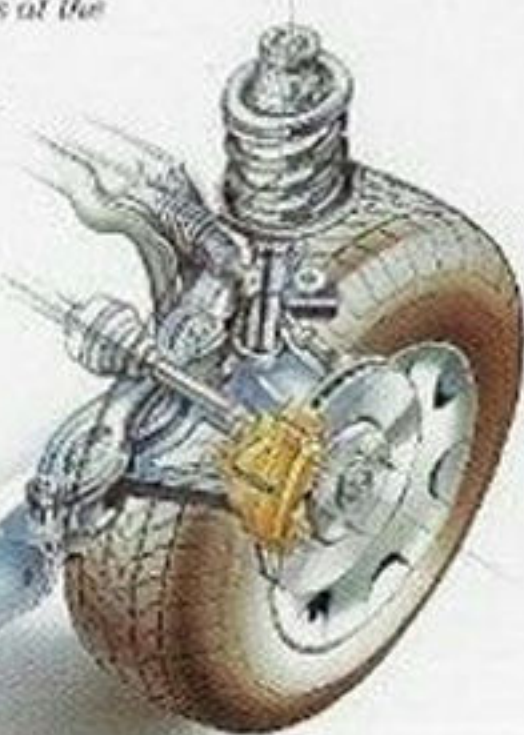


Stylish rear end with security blind and cargo net enables bulky loads to be safely hidden away.

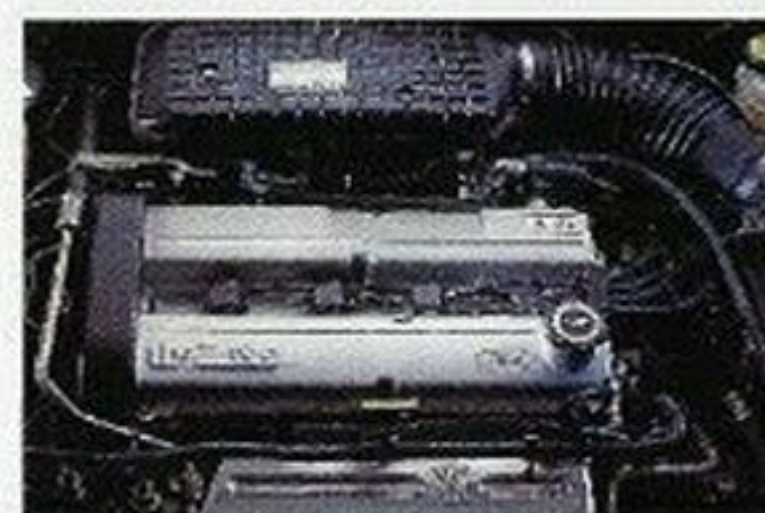


can relax with a load of fragile china. And with safety features such as driver's airbag, four-wheel disc brakes and front seat belt pretensioners, you can trust it with the most precious cargo of all. Your family. Extra features, such as removable load cover and luggage security net, make it very easy to live with.

MacPherson struts at the front, and fully independent rear suspension contribute to Mondeo's outstanding ride quality and precise handling.



And you'll be glad to know that many components have been designed for future recycling, making Mondeo a truly "green" machine.



2 litre DOHC 16-valve Zetec engine develops 24 kW at 5700 rpm.

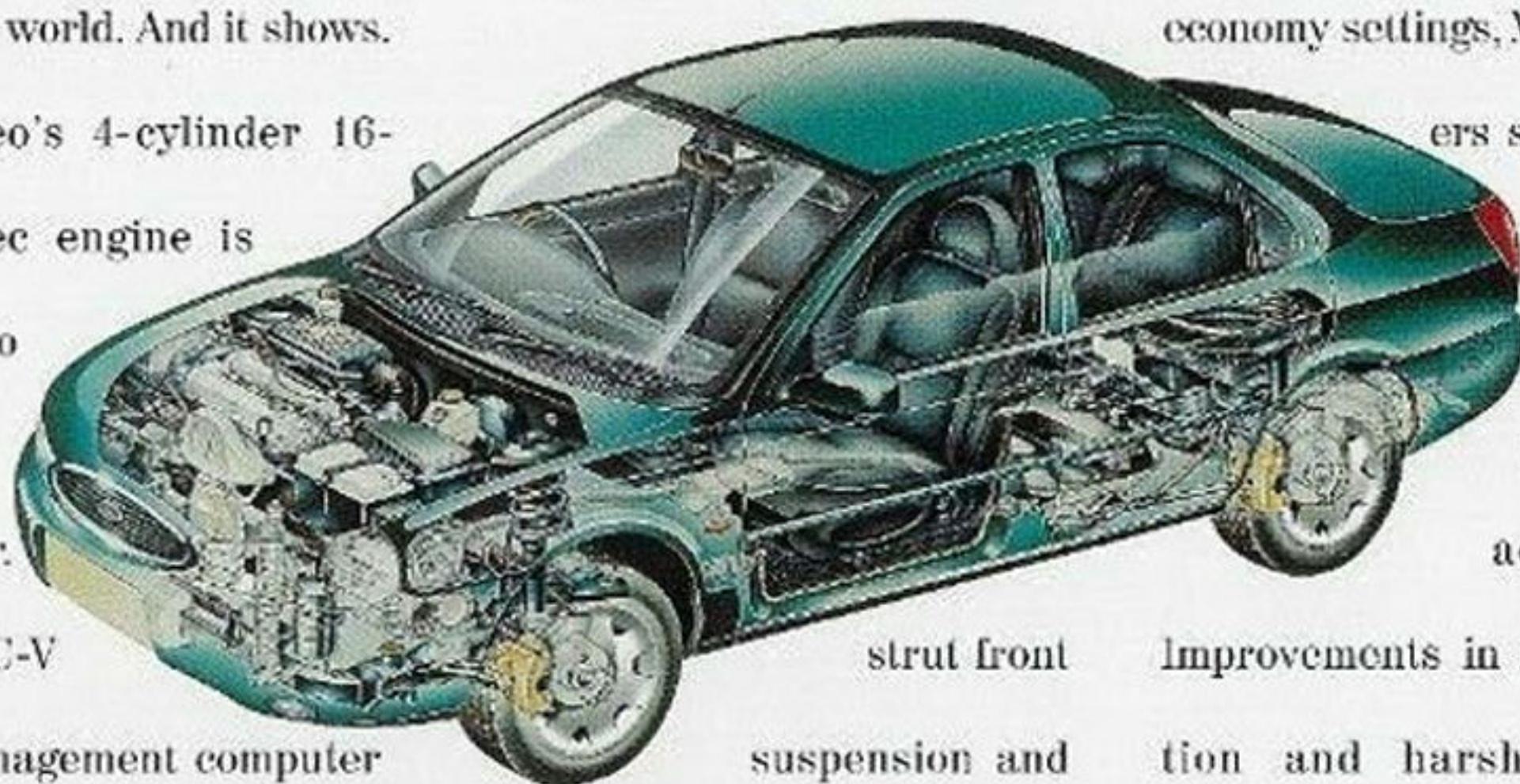
To create the new Mondeo, Ford brought together its top engineers and designers from all over the world. And it shows.

Mondeo's 4-cylinder 16-valve Zetec engine is designed to be lighter and quieter.

Ford's EEC-V engine management computer ensures optimum performance at all speeds. So your Mondeo will respond powerfully, efficiently and smoothly on the autobahn or around town.

Mondeo's front and rear suspension has been further refined. The MacPherson

Right passenger cell and side intrusion bars provide high standards of safety.



Whether you prefer five-speed manual, with a new, lighter clutch, or optional four-speed automatic, with sport or economy settings, Mondeo delivers sophisticated

performance and responsive acceleration.

Improvements in noise, vibration and harshness have been achieved, making new Mondeo smoother, quieter and more enjoyable.

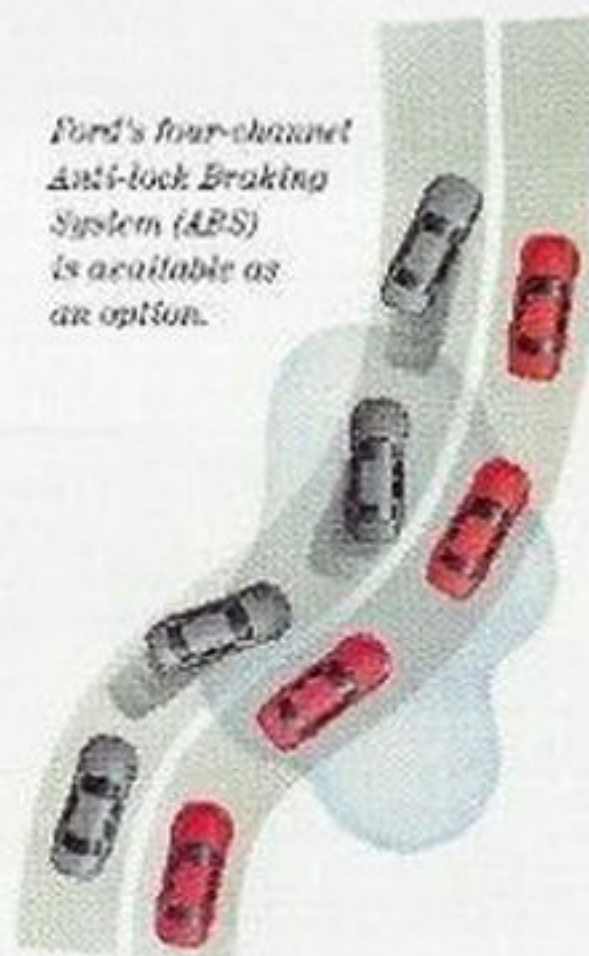
Mondeo has been refined through one of the most demand-

ing field evaluation processes, driving 1.6 million km over rigorous conditions. Making it a car you can own and drive with confidence.



Ford Mondeo is designed not merely to meet Australian and international automotive safety standards, but to exceed them. A system of crash resistant beams forms a 'safety compartment' surrounding occupants. Extensive testing has shown Mondeo offers high levels of protection from front, rear and side impacts, as well as meeting new European legislation on fire prevention.

Ford's four-channel Anti-lock Braking System (ABS) is available as an option.



Mondeo features a driver airbag as standard, with the option of a front passenger and side airbag system (side airbags available from April 1997.) The sensors that trigger the driver airbag also activate front seat belt pretensioners.

A separate sensor is designed to monitor lateral acceleration and to deploy the side airbags from the front



Standard driver airbag and optional passenger airbag.

seats when triggered. All Mondeo seats incorporate anti-submarining cushions to help prevent occupants from sliding forward under their seat belts in case of a sudden stop. Every Mondeo has a full, retracting lap

and sash seat belt for the centre rear passenger, to give all occupants the benefit of this important safety feature.

Additionally, Mondeo's advanced independent rear suspension has been fine-tuned to give superior control. This gives improved confidence and handling, for the most important safety feature of all - avoiding an accident.



Optional side airbags help protect in a lateral impact (available in conjunction with front passenger airbag option from April 1997.) Note: Airbag diagrams shown are for illustrative purposes only.

The new Ford Mondeo was designed with increased security in mind.

Double-locking doors are standard on Mondeo GLX Sedan and Hatch.

In addition, the Mondeo GLX Sedan and Hatch feature remote control keyless entry. This enables you to unlock your vehicle from up to 10 metres away.



The remote keyless entry system allows you to unlock your Mondeo GLX from up to 10m away.

COLOURS & TRIMS

Mondeo's exterior finishes not only offer a choice of stylish European shades, the underlying technology is designed to preserve the vehicle's good looks for years to come. As you expect, interior trims are tastefully coordinated.



Sherwood Green



Winter White



State Blue



Federation Red



Silver Ash



Burnished Steel



Radiant Red



Flight cloth - LX



Liberty Velour - GLX

SPECIFICATIONS

	LX Sedan	GLX Sedan	GLX Hatch	LX Wagon
Technical				
2 litre DOHC multi-point EFI 4-cylinder 16-valve engine	S	S	S	S
5-speed manual transmission	S	S	S	S
4-speed electronically controlled automatic transmission with lock-up torque converter, power & economy modes and overdrive	OPT	OPT	OPT	OPT
Front and rear stabiliser bars	S	S	S	S
Power-assisted, 4-wheel disc brakes (front ventilated)	S	S	S	S
4-channel Anti-lock Braking System (ABS)	OPT	OPT	OPT	OPT
Power-assisted rack and pinion steering	S	S	S	S
Cruise control	-	S	S	-
Exterior				
Colour-keyed, impact absorbing bumper bars	S	S	S	S
Remote control keyless entry	-	S	S	-
Heated rear window	S	S	S	S
Full wheel covers	S	S	S	S
Galvanised corrosion resistant body	S	S	S	S
Interior				
Air conditioning	S	S	S	S
Driver airbag	S	S	S	S
Passenger airbag and side impact airbags (*)	OPT	OPT	OPT	OPT
Front seat belt pre-tensioners	S	S	S	S
Rear centre seat 3-point inertia reel seat belt	S	S	S	S
Height and reach adjustable steering wheel	S	S	S	S
Central locking	S	S	S	S
Front and rear power windows, driver's window one-touch-down	-	S	S	-
Rear seat head rests	-	S	S	-
60/40 split folding rear seats	S	S	S	S
Pollen filter	S	S	S	S
Electric height adjustable driver's seat	-	S	S	-
Tachometer	S	S	S	S

S = standard equipment, OPT = optional at extra cost

* Side airbags available from April 1997



Mondeo LX Sedan



Mondeo GLX Sedan



Mondeo GLX Hatch



Mondeo LX Wagon

FORD APPROVED ACCESSORIES



Bonnet Protector & Headlamp Guards
Guard against stone chips and help keep the paintwork free from insects and road grime.



Rear Sunshade
Stylish rear sunshade. Available on hatch (shown) and sedan.



Front Door Weatherstrials
Tough acrylic shields help protect against wind and light rain.



Alloy Wheels & Front Mud Spats
Alloy wheels are available on all models. Mud flaps help keep splash and road spray off the body-work.



Carpet Mats
Push carpet mats designed to protect the original Mondeo floor covering. Styled rubber mats also available.



Carry Bars
Add extra carrying versatility to your Mondeo Sedan or Hatch (roof rack also available for Wagon).

FORDCARE



Fordcare is a whole range of programs, products and services designed to make Ford owners the most satisfied motor vehicle owners in Australia.

The well-being of your Ford is supported by these warranties and services:

3 YEAR/100,000 KM WARRANTY.*



Every new Ford car and light truck purchased from January 1, 1997 now includes a comprehensive 3 Year/100,000 km 'Bumper to Bumper' warranty.

It covers your Ford against defects in factory materials or workmanship for the first 3 years or 100,000 km - whichever occurs first.

When fitted prior to vehicle delivery, Ford Approved Accessories are also

covered by the Ford 3 Year/100,000 km Express New Vehicle Warranty.

FIVE YEAR PERFORATION CORROSION WARRANTY*

Covers the original vehicle's body against perforation corrosion for the first five years of its life.

LIFELONG PANEL WARRANTY*



Covers replacement of outer body panels against perforation corrosion for the life of the vehicle.

FORD CUSTOMER ASSISTANCE CENTRE.



We're always happy to hear from you and you will find us responsive to your needs. Customer Assistance Centre - Telephone 1800 333 306 (TOLL FREE), in Melbourne telephone 9359 7023.

FORD CREDIT FINANCIAL SERVICES.



Ford Leasing and Red Carpet Options are available to approved applicants of Ford Credit Australia Limited. Enquire at your Authorised Ford Dealer.

FLEET COMMUNICATION CENTRE.



Our Fleet Communication Centre is available to assist fleet customers with information on Ford products and services. Telephone 1800 673 207. Further information on these warranties and services may be obtained from your Authorised Ford Dealer.

*Conditions and exclusions apply. See your Authorized Ford Dealer for details.



Visit Ford on the Internet. Our home page is located at: www.ford.com.au

This brochure is designed to provide you with a general introduction to the Ford Products (including available optional equipment) referred to, and should be read in conjunction with the latest specification sheet. Because of changes in conditions and circumstances Ford* reserves the right, subject to all applicable laws, at any time, at its discretion, and without notice, to discontinue or change the features, designs, materials, colours and other specifications and the prices of their products, and to either permanently or temporarily withdraw any such products from the market without incurring any liability to any prospective purchaser or purchaser. The latest specification sheet should be referred to for information on the availability, ordering and use of optional equipment. Always consult an Authorised Ford Dealer for the latest information with respect to features, specifications, prices, optional equipment and availability before deciding to place an order. *FORD MOTOR COMPANY OF AUSTRALIA LIMITED. (A.C.N. 034 116 223) Registered Office: 1735 Sydney Road, Campbellfield, Victoria 3061, Australia. Printed March 1997. FCL 4330