

2008 **Honda** Cars and Trucks





Few sentences have more power than those that begin with **"What if."**

There's only one way to find out if a dream can truly be achieved. Honda has been examining big ideas and putting visions to the test for more than 60 years. The results include soaring, breathtaking innovations in many areas, including three we consider key: safety, environmental engineering and—especially close to our heart—the art of making driving more fun.



Honda has always been out front in beating government clean-air standards. Now, we're leading the world to sustainable transportation, bringing a hydrogen fuel cell car—the FCX—to market.



We think everyone deserves to feel safe, so we put our most advanced safety technology in nearly every vehicle we sell.



To us, it seems perfectly obvious. Driving is supposed to be fun. That's why every car and truck we make is totally engaging to drive.

Would you expect anything less from the world's largest motorcycle maker?



Honda's "man maximum, machine minimum" philosophy yields innovations like the revolutionary HondaJet™. Its unique engine-mount system allows for a remarkably spacious passenger cabin.





What if a car could go beyond Point A and Point B?

## Accord Sedan



**Beyond the road.** Few things connect to your life at more points than your car. And few cars connect with more significance than the Accord. To surpass everything we've done before, we've looked for inspiration beyond where it lives to where you live. Precisely tuning the new Accord to the demands of the road, and to the desires of its owner. For sharper style, for richer luxury, for increased safety, for bigger thrills. [accord.honda.com](http://accord.honda.com)

### LX Sedan

- 177-hp, 2.4-liter, i-VTEC<sup>™</sup> 4-cylinder engine (SAE net)
- 5-speed manual or 5-speed automatic transmission
- 16-inch wheels and tires
- Vehicle Stability Assist<sup>™</sup> (VSA<sup>™</sup>) with traction control
- Daytime Running Lights (DRL)
- Front, front side and side curtain airbags
- Steering wheel-mounted audio controls
- Power windows with auto-up/-down driver's window
- Power door locks and mirrors
- Cruise control
- MP3/WMA<sup>1</sup>-capable audio system with 6 speakers
- Radio Data System (RDS)
- MP3/auxiliary input jack

### LX Premium Sedan additions or replacements

- 16-inch alloy wheels and tires
- Driver's seat with 8-way power adjustment
- Auto-up/-down front passenger's window
- Security system

### EX Sedan additions or replacements

- 190-hp, 2.4-liter, i-VTEC 4-cylinder engine (SAE net)
- 17-inch alloy wheels and tires
- Power moonroof
- 6-disc in-dash audio system with multi-line display
- Heated side mirrors
- Driver's seat with power lumbar support

### EX-L Sedan additions or replacements

- Leather-trimmed seats
- 270-watt premium audio system with subwoofer
- XM<sup>®</sup> Satellite Radio<sup>2</sup>
- Heated front seats
- Dual-zone automatic climate control system
- Automatic dimming rearview mirror
- Auto-on/off headlights
- Compass
- Exterior temperature gauge

- Available Honda Satellite-Linked Navigation System<sup>™3</sup> with voice recognition and Bluetooth<sup>™4</sup> HandsFreeLink<sup>®</sup>

### EX V-6 Sedan (additions or replacements to EX Sedan)

- 268-hp, 3.5-liter i-VTEC V-6 engine with Variable Cylinder Management<sup>™</sup> (VCM<sup>™</sup>) (SAE net)
- Fog lights
- Chrome door handles

### EX-L V-6 Sedan (additions or replacements to EX V-6 Sedan)

- Leather-trimmed seats
- 270-watt premium audio system with subwoofer
- XM Satellite Radio<sup>2</sup>
- Passenger's seat with 4-way power adjustment
- Heated front seats
- Dual-zone automatic climate control system
- HomeLink<sup>®</sup> remote system<sup>5</sup>
- Automatic dimming rearview mirror
- Auto-on/off headlights
- Compass
- Exterior temperature gauge
- Available Honda Satellite-Linked Navigation System<sup>3</sup> with voice recognition and Bluetooth<sup>4</sup> HandsFreeLink<sup>®</sup>

### Colors<sup>6</sup>

- 1 Alabaster Silver Metallic
- 2 Basque Red Pearl
- 3 Bold Beige Metallic
- 4 Mystic Green Metallic
- 5 Nighthawk Black Pearl
- 6 Polished Metal Metallic
- 7 Royal Blue Pearl
- 8 Taffeta White
- 9 White Diamond Pearl

Accord EX V-6 Sedan shown in Royal Blue Pearl.

1

2

3

4

5

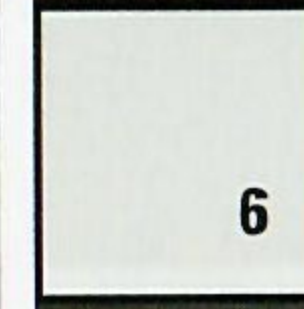
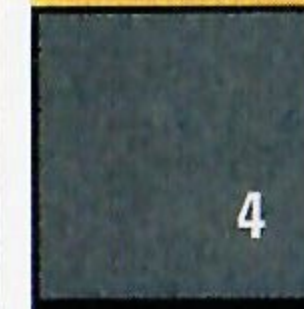
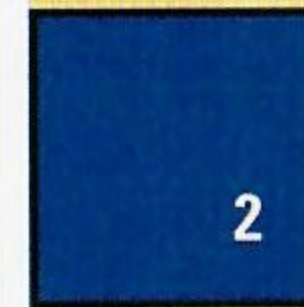
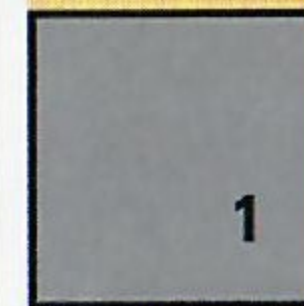
6

7

8



What if an icon of simplicity was also an icon of style? **Accord Coupe**



**The drive is just the beginning.** Few cars have become such a big part of people's lives. Accord owners trade their old ones in for new ones at an impressive rate. Automotive experts get it, too. *Car and Driver* has named the Accord to its "10Best" list for 21 of its 25 years, this latest time citing its "...all-around excellence."<sup>7</sup> And now, the all-new 2008 Accord offers bolder styling, more room, more power and more of the things—great and small—that make it, well, the Accord. [accord.honda.com](http://accord.honda.com)

#### LX Sport Coupe

- 190-hp, 2.4-liter, i-VTEC<sup>®</sup> 4-cylinder engine (SAE net)
- 5-speed manual or 5-speed automatic transmission
- 17-inch alloy wheels and tires
- Vehicle Stability Assist<sup>™</sup> (VSA<sup>®</sup>) with traction control
- Daytime Running Lights (DRL)
- Front, front side and side curtain airbags
- 6-disc in-dash audio system with multi-line liquid crystal display, MP3/WMA<sup>1</sup> capability and 6 speakers
- Radio Data System (RDS)
- MP3/auxiliary input jack
- Steering wheel-mounted audio controls
- Power windows with auto-up/-down driver's window
- Power door locks and mirrors
- Cruise control
- Security system

#### EX Coupe additions or replacements

- 270-watt premium audio system with subwoofer
- Power moonroof
- Heated side mirrors
- Auto-up/down front passenger's window

#### EX-L Coupe additions or replacements

- Leather-trimmed seats
- Leather-wrapped steering wheel
- Driver's seat with 8-way power adjustment
- XM<sup>®</sup> Satellite Radio<sup>2</sup>
- Heated front seats

- Dual-zone automatic climate control system
- Auto-on/off headlights
- Compass
- Exterior temperature gauge
- Available Honda Satellite-Linked Navigation System<sup>™3</sup> with voice recognition and Bluetooth<sup>®4</sup> HandsFreeLink<sup>®</sup>

#### EX-L V-6 Coupe (additions or replacements to EX-L Coupe)

- 268-hp, 3.5-liter, i-VTEC V-6 engine with Variable Cylinder Management<sup>™</sup> (VCM<sup>®</sup>) (6MT comes with VTEC<sup>®</sup> without VCM) (SAE net)
- 6-speed manual or 5-speed automatic transmission
- 18-inch alloy wheels and tires
- Fog lights
- Chrome door handles
- HomeLink<sup>®</sup> remote system<sup>5</sup>
- Body-colored rear decklid spoiler

#### Colors<sup>6</sup>

- 1 Alabaster Silver Metallic
- 2 Belize Blue Pearl
- 3 Nighthawk Black Pearl
- 4 Polished Metal Metallic
- 5 San Marino Red
- 6 Taffeta White





## What if exhilaration is the starting point? **Civic Si Coupe**

Civic Si Coupe shown in Habanero Red Pearl.

**Life is all about movement.** Thinking ahead. Seeing new possibilities. Seizing the moment. And nothing pumps up the potential quite like the Civic Si Coupe. This is the Civic that ushered in the modern sport-compact era, and it's loaded with tech befitting the king of compacts. Check out the ground-hugging stance. The taut suspension. And the 197 horses of i-VTEC® power. The future looks a lot like fun. [civic.honda.com](http://civic.honda.com)

### Si Coupe

- 197-hp, 2.0-liter, DOHC i-VTEC® 4-cylinder engine (SAE net)
- Close-ratio 6-speed manual transmission
- Helical limited-slip differential
- 17-inch alloy wheels and tires
- Tire Pressure Monitoring System (TPMS)
- Body-colored rear wing spoiler
- Front, front side and side curtain airbags
- Advanced Compatibility Engineering™ (ACE™) body structure
- Vehicle Stability Assist™ (VSA®) with traction control
- 350-watt AM/FM/CD premium audio system with 7 speakers, including subwoofer
- Perforated leather-wrapped steering wheel
- Aluminum shift knob with leather
- Textured aluminum pedals

- Red backlit gauges
- Red ambient console lighting
- Security system with remote entry
- Available Honda Satellite-Linked Navigation System™<sup>3</sup> with voice recognition, digital audio-card reader and XM® Satellite Radio<sup>2</sup>

### Colors<sup>6</sup>

- 1 Alabaster Silver Metallic
- 2 Fiji Blue Pearl
- 3 Galaxy Gray Metallic
- 4 Habanero Red Pearl
- 5 Nighthawk Black Pearl
- 6 Rallye Red
- 7 Taffeta White



## Civic Si Sedan

Civic Si Sedan shown in Fiji Blue Pearl with accessory 17" alloy wheels and tires.

### Si Sedan

- 197-hp, 2.0-liter, DOHC i-VTEC® 4-cylinder engine (SAE net)
- Close-ratio 6-speed manual transmission
- Helical limited-slip differential
- 17-inch alloy wheels and tires
- Tire Pressure Monitoring System (TPMS)
- Body-colored low-profile rear wing spoiler
- Front, front side and side curtain airbags
- Advanced Compatibility Engineering™ (ACE™) body structure
- Vehicle Stability Assist™ (VSA®) with traction control
- 350-watt AM/FM/CD premium audio system with 7 speakers, including subwoofer
- Perforated leather-wrapped steering wheel
- Aluminum shift knob with leather
- Textured aluminum pedals

- Red backlit gauges
- Red ambient console lighting
- Security system with remote entry
- Available Honda Satellite-Linked Navigation System™<sup>3</sup> with voice recognition, digital audio-card reader and XM® Satellite Radio<sup>2</sup>

### Colors<sup>6</sup>

- 1 Alabaster Silver Metallic
- 2 Fiji Blue Pearl
- 3 Galaxy Gray Metallic
- 4 Habanero Red Pearl
- 5 Nighthawk Black Pearl
- 6 Rallye Red
- 7 Taffeta White

**Set your wilder side free.** Being sensible is a fine thing – as long as it's not the only thing. The Civic Si Sedan makes it a truly exciting virtue. The 4-door Si has all the high-performance excellence of the Si Coupe combined with all the comforts and conveniences the Civic Sedan offers. You can tell your rational side it's about practicality. But we all know that the Si delivers a pure driving intensity that overpowers everything else. [civic.honda.com](http://civic.honda.com)





## What if smart teamed up with seductive? **Civic Sedan**

Civic EX Sedan shown in Galaxy Gray Metallic.

**What you need. Plus what you want.** A leading-edge blend of killer style, roomy comfort, next-big-thing technology and huge driving fun, Civic Sedan makes both sides of your brain happy. You can up the ante with luxury items like the available Honda Satellite-Linked Navigation System™<sup>3</sup> and an audio system that features XM® Satellite Radio.<sup>2</sup> And for the first time ever, you can even choose genuine leather trim, which includes leather seats, steering wheel and armrest. [civic.honda.com](http://civic.honda.com)

### DX Sedan

- 140-hp, 1.8-liter, i-VTEC® 4-cylinder engine (SAE net)
- 5-speed manual or 5-speed automatic transmission
- 15-inch wheels and tires
- Tire Pressure Monitoring System (TPMS)
- Power windows
- Anti-lock braking system (ABS) with EBD
- Front, front side and side curtain airbags

### LX Sedan additions or replacements

- 16-inch wheels and tires
- Security system with remote entry
- Air conditioning with air-filtration system
- Power windows with auto-up/down driver's window
- Cruise control
- 160-watt AM/FM/CD audio system with 4 speakers
- MP3/auxiliary input jack

### EX Sedan additions or replacements

- 16-inch alloy wheels and tires
- One-touch power moonroof with tilt feature

- Steering wheel-mounted audio controls
- 160-watt AM/FM/CD audio system with 6 speakers
- Available Honda Satellite-Linked Navigation System™<sup>3</sup> with voice recognition, digital audio-card reader and XM® Satellite Radio<sup>2</sup>

### EX-L Sedan additions or replacements

- Leather-trimmed seats and front center armrest
- Heated front seats and side mirrors
- Perforated leather-wrapped steering wheel

### Colors<sup>6</sup>

- 1 Alabaster Silver Metallic
- 2 Atomic Blue Metallic
- 3 Borrego Beige Metallic
- 4 Galaxy Gray Metallic
- 5 Nighthawk Black Pearl
- 6 Royal Blue Pearl
- 7 Taffeta White
- 8 Tango Red Pearl



## Civic Coupe

Civic EX Coupe shown in Galaxy Gray Metallic.

### DX Coupe

- 140-hp, 1.8-liter, i-VTEC® 4-cylinder engine (SAE net)
- 5-speed manual or 5-speed automatic transmission
- 15-inch wheels and tires
- Tire Pressure Monitoring System (TPMS)
- Power windows
- Anti-lock braking system (ABS) with EBD
- Front, front side and side curtain airbags

### LX Coupe additions or replacements

- 16-inch wheels and tires
- Security system with remote entry
- Air conditioning with air-filtration system
- Power windows with auto-up/down driver's window
- Cruise control
- 160-watt AM/FM/CD audio system with 6 speakers
- MP3/auxiliary input jack

### EX Coupe additions or replacements

- 16-inch alloy wheels and tires
- One-touch power moonroof with tilt feature

- Steering wheel-mounted audio controls
- 350-watt AM/FM/CD premium audio system with 7 speakers, including subwoofer
- Available Honda Satellite-Linked Navigation System™<sup>3</sup> with voice recognition, digital audio-card reader and XM® Satellite Radio<sup>2</sup>

### EX-L Coupe additions or replacements

- Leather-trimmed seats and front center armrest
- Heated front seats and side mirrors
- Perforated leather-wrapped steering wheel

### Colors<sup>6</sup>

- 1 Alabaster Silver Metallic
- 2 Atomic Blue Metallic
- 3 Galaxy Gray Metallic
- 4 Nighthawk Black Pearl
- 5 Rallye Red
- 6 Royal Blue Pearl
- 7 Taffeta White

**Empowering in so many ways.** The Civic Coupe is your ticket to all kinds of benefits, like the exhilaration of strong acceleration and precision cornering. You'll savor ample comfort and legendary Honda engineering. And for 2008, you can even bask in the luxury of supple leather trim while you marvel about the Civic Coupe's excellent fuel economy.<sup>8</sup> [civic.honda.com](http://civic.honda.com)





What if green was the fun way to go? **Civic Hybrid**

Civic Hybrid shown in Alabaster Silver Metallic.

**Eco-friendliness can be very fulfilling.** The Civic Hybrid certainly makes a strong environmental statement, with exceptional fuel economy<sup>8</sup> and Advanced Technology Partial Zero-Emission Vehicle (AT-PZEV) certification.<sup>9</sup> But you still get to enjoy plenty of style, comfort and convenience. And since we're talking Civic here, it's also totally enjoyable to drive. [civic.honda.com](http://civic.honda.com)

#### Hybrid

- 110-hp, 1.8-liter, i-VTEC<sup>®</sup> 4-cylinder engine (SAE net)
- Continuously Variable Transmission (CVT)
- AT-PZEV emissions rating<sup>9</sup>
- 15-inch alloy wheels and tires
- Drive-by-Wire<sup>™</sup> throttle system
- Anti-lock braking system (ABS)
- Electronic Brake Distribution (EBD)
- Brake Assist
- Daytime Running Lights (DRL)
- Tire Pressure Monitoring System (TPMS)
- Front, front side and side curtain airbags
- Advanced Compatibility Engineering<sup>™</sup> (ACE<sup>™</sup>) body structure
- Security system with remote entry and trunk release
- Body-colored power side mirrors with integrated turn indicators
- Rear decklid spoiler
- Power windows, mirrors and door locks
- Cruise control

- 160-watt AM/FM/CD audio system with 6 speakers
- MP3/Windows Media<sup>®</sup> Audio (WMA)<sup>1</sup> playback capability
- MP3/auxiliary input jack
- Automatic climate control
- Exterior temperature indicator
- Two-tier instrument panel with blue backlit gauges
- IMA charge and assist indicators
- Tilt and telescopic steering column
- Steering wheel-mounted audio controls
- Available Honda Satellite-Linked Navigation System<sup>™3</sup> with voice recognition, digital audio-card reader and XM<sup>®</sup> Satellite Radio<sup>2</sup>

#### Colors<sup>6</sup>

- 1 Alabaster Silver Metallic
- 2 Galaxy Gray Metallic
- 3 Magnetic Pearl
- 4 Opal Silver Blue Metallic
- 5 Taffeta White



What if small were the new big? **Fit**

Fit Sport shown in Storm Silver Metallic.

#### Fit

- 109-hp, 1.5-liter, VTEC<sup>®</sup> 4-cylinder engine (SAE net)
- 5-speed manual or 5-speed automatic transmission
- Drive-by-Wire<sup>™</sup> throttle system
- 14-inch wheels and tires
- Front, front side and side curtain airbags
- Anti-lock braking system (ABS)
- Electronic Brake Distribution (EBD)
- Tire Pressure Monitoring System (TPMS)
- 60/40 split second-row Magic Seat<sup>®</sup>
- Power windows with auto-down driver's window
- Power door locks and mirrors
- Maintenance Minder<sup>™</sup> system
- Beverage holders (5)
- 160-watt, AM/FM/CD audio system with speed-sensitive volume control (SVC) and 4 speakers

#### Fit Sport additions or replacements

- Steering wheel-mounted paddle shifters (AT models only)
- Security system with remote entry

- 15-inch alloy wheels and tires
- Perforated leather-wrapped steering wheel
- Body-colored underbody kit and rear roofline spoiler
- Fog lights
- Sport shift knob
- 200-watt AM/FM/CD audio system with MP3/WMA<sup>1</sup> playback capability, 5-mode equalizer and 6 speakers
- MP3/auxiliary input jack
- CD text display capability
- Cruise control

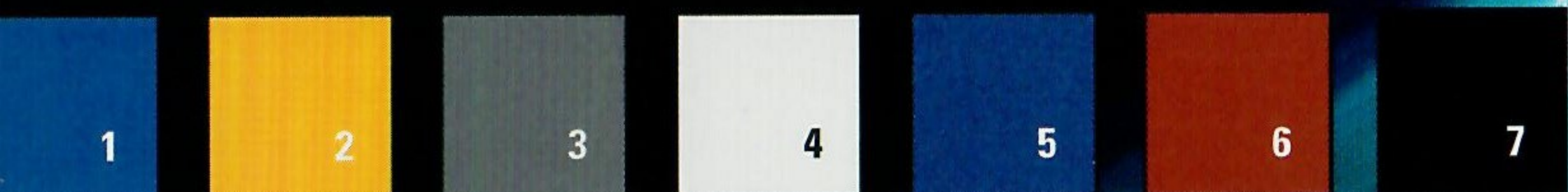
#### Colors<sup>6</sup>

- 1 Tidewater Blue Metallic
- 2 Blaze Orange Metallic
- 3 Milano Red
- 4 Nighthawk Black Pearl
- 5 Storm Silver Metallic
- 6 Blackberry Pearl
- 7 Vivid Blue Pearl

**Tower over the taller.** The Fit may seem small in stature, but it comes up huge when you hit the road. Squirt through traffic with its impressively spunky VTEC engine. Marvel at the impossibly roomy interior—with gymnast-worthy flexibility that lets you make the most of every square inch. Traffic-dodging. Cargo-gulping. Fun-inducing. The Fit is go! [fit.honda.com](http://fit.honda.com)



What if "track ready" and "street legal" meant the same thing? **S2000**



S2000 CR shown in Apex Blue Pearl.

**Still the essential sports car. Only sportier.** Developed by the engineers who helped Honda become a racing leader, the S2000 perfectly evokes the pride, passion and exhilaration of Honda motorsports. And for 2008, even more interesting weekends are in store thanks to the new S2000 CR – a sportier version that features a removable hardtop for lighter weight, and a stiffened suspension for even hotter cornering. [s2000.honda.com](http://s2000.honda.com)

#### S2000

- 237-hp, 2.2-liter, VTEC® 4-cylinder engine (SAE net)
- Close-ratio 6-speed manual transmission
- Torque-sensing limited-slip differential
- Drive-by-Wire™ throttle system
- Vehicle Stability Assist™ (VSA®) with traction control
- 17-inch alloy wheels with Bridgestone Potenza RE050 tires
- Dual front airbags
- Anti-lock braking system (ABS)
- Electrically powered soft top
- Glass rear window with defroster
- High-intensity discharge (HID) headlights
- Power windows
- Cruise control
- AM/FM/CD audio system with 8 speakers
- Digital instrument panel
- Daytime Running Lights (DRL)

#### S2000 CR additions or replacements

- Quicker steering ratio (13.8:1 vs. 14.9:1)
- Bridgestone Potenza RE070 tires

- Firmer springs, dampers and suspension bushings
- Stiffer stabilizer bars (front and rear)
- Rear body brace
- Unique exhaust silencer
- Fully functional aerodynamic spoilers (front and rear)
- Body-colored roll-over cowlings
- Clear marker lights
- Removable hardtop
- Tachometer with peak-power indicator
- Air conditioning/audio system (available)

#### Colors®

- 1 Apex Blue Pearl
- 2 Rio Yellow Pearl
- 3 Chicane Silver Metallic
- 4 Grand Prix White
- 5 Laguna Blue Pearl
- 6 New Formula Red
- 7 Berlina Black



What if functionality was given its own groove? **Element**

Element SC shown in Galaxy Gray Metallic.

#### 2WD LX

- 166-hp, 2.4-liter, DOHC i-VTEC® 4-cylinder engine (SAE net)
- 5-speed manual or 5-speed automatic transmission
- Vehicle Stability Assist™ (VSA®) with traction control
- Front, front side and side curtain airbags with rollover sensor
- Anti-lock braking system (ABS)
- Electronic Brake Distribution (EBD)
- Tire Pressure Monitoring System (TPMS)
- 120-watt AM/FM/CD audio system with 4 speakers
- Power front windows
- Waterproof FXC™ fabric on front seats

#### 4WD LX additions or replacements

- Real Time 4-Wheel Drive™
- Removable skylight with tilt feature

#### 2WD EX additions or replacements

- Body-colored door handles and composite body panels
- 270-watt AM/FM/CD audio system

#### 4WD EX additions or replacements

- Real Time 4-Wheel Drive
- Removable skylight with tilt feature

#### SC additions or replacements

- Body-colored and lowered side sills and roof moldings
- 18-inch alloy wheels and tires
- Lowered suspension
- Exclusive "tattoo" seat fabrics and door-panel inserts

#### Colors®

- 1 Alabaster Silver Metallic
- 2 Nighthawk Black Pearl
- 3 Kiwi Metallic
- 4 Galaxy Gray Metallic
- 5 Atomic Blue Metallic
- 6 Root Beer Metallic
- 7 Royal Blue Pearl
- 8 Tangerine Metallic
- 9 Tango Red Pearl

**Versatility is its main attraction.** The Element offers 64 ways to arrange its seats, so there's got to be a million things you can use it for. And with a full complement of comfort, convenience and entertainment features, a good time is certain. No matter what you do, though, the Element's unique attitude sets it and its passengers apart from the pack. [element.honda.com](http://element.honda.com)



What if the van could recapture its mojo? **Odyssey**



Odyssey EX-L shown in Ocean Mist Metallic.



**It's all in how you haul.** The van has always been about big space and how you can use it. Odyssey maxes it out with seats for up to eight or as much as 147 cu. ft. of wide-open space in back. Then it blows all comparisons away with state-of-the-art technology, a 5-star crash rating,\* massive comfort and big-time performance. And for '08, it's been restyled and packed with even more great features. Without a doubt, the van is back. [odyssey.honda.com](http://odyssey.honda.com)

#### LX

- 244-hp, 3.5-liter, SOHC VTEC® V-6 engine (SAE net)
- 5-speed automatic transmission
- Vehicle Stability Assist™ (VSA®) with traction control
- Tire Pressure Monitoring System (TPMS)
- Front, front side and side curtain airbags with rollover sensor
- Active front head restraints
- MP3/auxiliary input jack
- One-motion 60/40 split 3rd-row Magic Seat®

#### EX additions or replacements

- Power sliding doors
- 8-way power driver's seat with 2-position memory

#### EX-L additions or replacements

- 3.5-liter i-VTEC® V-6 engine with VCM®
- Leather-trimmed seats and door-panel inserts
- Rearview mirror with rearview camera display
- Passenger's seat with 4-way power adjustment
- Available Honda Satellite-Linked Navigation System™<sup>3</sup>
- Available Honda DVD Rear Entertainment System

#### Touring additions or replacements

- Honda Satellite-Linked Navigation System<sup>3</sup>
- Honda DVD Rear Entertainment System
- 360-watt AM/FM 6-disc in-dash premium audio system
- Bluetooth® HandsFreeLink®
- Memory-linked side mirrors with reverse-gear tilt-down
- Power tailgate
- Fog lights
- Power adjustable pedals
- Available Michelin® PAX® system run-flat technology<sup>11</sup>

#### Colors<sup>8</sup>

- 1 Taffeta White
- 2 Dark Cherry Pearl
- 3 Mocha Metallic
- 4 Silver Pearl Metallic
- 5 Nimbus Gray Metallic
- 6 Ocean Mist Metallic
- 7 Nighthawk Black Pearl
- 8 Slate Green Metallic
- 9 Baltic Blue Pearl

\*Government star ratings are part of the National Highway Traffic Safety Administration's (NHTSA's) New Car Assessment Program ([www.safercar.gov](http://www.safercar.gov)). Model tested with standard side-impact airbags (SABs).



What if adventure becomes irresistible? **CR-V**

CR-V 4WD EX-L shown in Green Tea Metallic with accessory roof rack and ski attachment.



#### LX

- 166-hp, 2.4-liter, DOHC i-VTEC® 4-cylinder engine (SAE net)
- 5-speed automatic transmission
- Available Real Time 4-Wheel Drive™
- Vehicle Stability Assist™ (VSA®) with traction control
- Tire Pressure Monitoring System (TPMS)
- Front, front side and side curtain airbags with rollover sensor
- 160-watt AM/FM/CD audio system with 4 speakers
- MP3/Windows Media® Audio (WMA)<sup>1</sup> playback capability
- MP3/auxiliary input jack
- Conversation mirror with sunglasses holder
- Power door and tailgate locks with remote entry

#### EX additions or replacements

- Steering wheel-mounted audio controls
- Dual-deck cargo shelf
- One-touch power moonroof with tilt feature
- Rear privacy glass
- 160-watt AM/FM/6-disc in-dash audio system with 6 speakers
- Alloy wheels

#### EX-L additions or replacements

- Leather-trimmed seats and armrests
- Center console
- Heated front seats and side mirrors
- Driver's seat with 8-way power adjustment and power lumbar support
- Dual-zone automatic climate control system
- 270-watt AM/FM/6-disc in-dash audio system with 7 speakers, including subwoofer
- XM® Satellite Radio<sup>2</sup>
- Available Honda Satellite-Linked Navigation System™<sup>3</sup> with voice recognition and rearview camera

#### Colors<sup>8</sup>

- 1 Borrego Beige Metallic
- 2 Glacier Blue Metallic
- 3 Green Tea Metallic
- 4 Nighthawk Black Pearl
- 5 Royal Blue Pearl
- 6 Taffeta White
- 7 Tango Red Pearl
- 8 Whistler Silver Metallic

**Something new to crave.** Life's full of powerful attractions. And we're proud to offer yet another—the 2008 Honda CR-V. Its sultry contours and smooth sophistication are quite alluring. And the EX-L increases its appeal with more comforts and conveniences this year. Together, they help make the CR-V the most desirable way to get you where you need to be. [crv.honda.com](http://crv.honda.com)



What if civilization could travel anywhere? **Pilot**



Pilot EX-L shown in Aberdeen Green Metallic.

**Equally well-suited for off-road or off-Broadway adventures.** Regardless where your fun takes you, the Honda Pilot is the ideal traveling companion. It delivers rugged capability as well as refined amenities for eight people. And with two new models for 2008, each offering a package loaded with desirable features, you're sure to find the perfect Honda Pilot to suit your definition of a good time. [pilot.honda.com](http://pilot.honda.com)

#### Value Package

- 244-hp, 3.5-liter, SOHC i-VTEC® V-6 engine with Variable Cylinder Management™ (VCM®) (4WD comes with VTEC® without VCM) (SAE net)
- 5-speed automatic transmission
- Variable Torque Management® 4-wheel-drive system (VTM-4®) (4WD only)
- Anti-lock braking system (ABS)
- Vehicle Stability Assist™ (VSA®) with traction control
- Tire Pressure Monitoring System (TPMS)
- Front, front side and side curtain airbags with rollover sensor
- Steering wheel-mounted audio controls
- XM® Satellite Radio<sup>2</sup>
- 8-passenger seating

#### EX additions or replacements

- AM/FM/XM Ready™<sup>12</sup>/6-disc in-dash audio system
- Synchronized automatic climate control system
- Driver's seat with 8-way power adjustment

#### Special Edition additions or replacements

- Honda DVD Rear Entertainment System<sup>13</sup>
- XM Satellite Radio<sup>2</sup>
- Power moonroof with tilt feature
- Conversation mirror with sunglasses holder
- Ambient console lighting

#### EX-L (additions or replacements to EX)

- Leather-trimmed seats and door-panel inserts
- Perforated leather-wrapped steering wheel
- Heated front seats
- XM Satellite Radio<sup>2</sup>
- Available Honda Satellite-Linked Navigation System™<sup>3</sup>
- Available Honda DVD Rear Entertainment System<sup>13</sup>

#### Colors<sup>8</sup>

- |                           |                       |
|---------------------------|-----------------------|
| 1 Aberdeen Green Metallic | 5 Mocha Metallic      |
| 2 Billet Silver Metallic  | 6 Dark Cherry Pearl   |
| 3 Nimbus Gray Metallic    | 7 Steel Blue Metallic |
| 4 Formal Black            | 8 Taffeta White       |



Ridgeline RTX shown in Steel Blue Metallic.

What if brains and brawn each got a workout? **Ridgeline**

#### RT

- 247-hp, 3.5-liter, SOHC VTEC® V-6 engine (SAE net)
- 5-speed automatic transmission
- Variable Torque Management® 4-wheel-drive system (VTM-4®)
- Vehicle Stability Assist™ (VSA®) with traction control
- Tire Pressure Monitoring System (TPMS)
- Front, front side and side curtain airbags with rollover sensor
- Dual-action tailgate
- Lockable In-Bed Trunk<sup>\*</sup>

#### RTX additions or replacements

- Towing package (hitch and wiring harness)<sup>14</sup>

#### RTS additions or replacements

- Dual-zone automatic climate control
- 160-watt AM/FM/XM Ready™<sup>12</sup>/6-disc in-dash audio system with 7 speakers, including subwoofer
- Driver's seat with 8-way power adjustment

#### RTL additions or replacements

- Leather-trimmed seats
- Leather-wrapped steering wheel
- Heated front seats
- Heated side mirrors
- XM® Satellite Radio<sup>2</sup>
- Available Honda Satellite-Linked Navigation System™<sup>3</sup> with voice recognition
- MP3/auxiliary input jack (with navigation)
- Power moonroof
- HomeLink® remote system<sup>5</sup>
- Ambient console lighting

#### Colors<sup>8</sup>

- |                          |
|--------------------------|
| 1 Billet Silver Metallic |
| 2 Dark Cherry Pearl      |
| 3 Formal Black           |
| 4 Nimbus Gray Metallic   |
| 5 Steel Blue Metallic    |
| 6 White                  |

**Rugged meets refined.** Sure, the Ridgeline is a tough, powerful truck. But it also covers new ground, delivering comfort, efficiency<sup>8</sup> and bold innovation. Ridgeline's the first pickup to weld a rigid ladder frame to a solid unit body. First to feature a sharp-handling 4-wheel independent suspension. First with smart features like a dual-action tailgate and lockable In-Bed Trunk.<sup>\*</sup> Those are just some of the reasons *AUTOMOBILE Magazine* awarded the Ridgeline recognition as a 2007 All-Star. [ridgeline.honda.com](http://ridgeline.honda.com)





Twenty-five years ago Honda began assembling cars in the United States. Today, almost 4 out of 5 Hondas sold in the U.S. are assembled in North America. Many are developed here, too. And every Honda is a smart value thanks to timeless design, great reliability and extended maintenance intervals. Check out our Best Resale Value awards<sup>15</sup> from *Kelley Blue Book's* kbb.com, Best Overall Value awards from IntelliChoice<sup>®16</sup> and—for the 4th year in a row—Industry Brand Residual Value Award from *Automotive Lease Guide*.<sup>17</sup>



Your dealer's team of trained technicians is at the ready to help keep your Honda in superb shape. All 2008 Honda vehicles—and any Honda Genuine Accessories installed at the time of purchase—are covered by the 3-year/36,000-mile New-Vehicle Limited Warranty.<sup>18</sup> Plus, Honda cars and trucks are covered by a 5-year/ 60,000-mile Limited Powertrain Warranty, too.<sup>18</sup> For more information or assistance, see your Honda dealer or please give us a call at 1-800-33-Honda.



Visit us at [honda.com](http://honda.com). Get the latest photos, MSRPs, features, specs and more. You can “build” your own Honda, deck it out with accessories—even ask for a dealer price quote, apply for financing and check dealer inventories.

## HONDA Financial Services

Whether you buy or lease your Honda vehicle, Honda Financial Services can assist you with the process. Please ask your dealer which lease or purchase plan best suits your needs.

## HONDA Care

Honda Care<sup>®</sup> is a highly affordable, comprehensive vehicle and travel protection plan backed by Honda reliability, service and parts. See your dealer for all the details.



Personalize and protect with Honda Genuine Accessories. They're manufactured to the same strict standards as the rest of the vehicle. Please see your dealer for details.



♻️ Printed in U.S.A. on 10% post-consumer recycled paper. ZD2812

<sup>1</sup>Windows Media<sup>®</sup> is a trademark or registered trademark of Microsoft Corporation in the United States and/or other countries. <sup>2</sup>Required XM<sup>®</sup> radio monthly subscription sold separately after 90-day trial period. Installation costs and other fees and taxes may apply after initial trial period, including a one-time activation fee. Subscription fee is consumer only. All fees and programming subject to change. Subscriptions subject to Customer Agreement available at [xmradio.com](http://xmradio.com). XM service only available in the 48 contiguous United States. The XM name is a registered trademark of XM Satellite Radio Inc. <sup>3</sup>The Honda Satellite-Linked Navigation System<sup>™</sup> is available only in 48 contiguous United States on select EX, EX-L, Hybrid, RTL and Si models. Navigation System is standard on Odyssey Touring. <sup>4</sup>The Bluetooth<sup>™</sup> word mark and logos are owned by the Bluetooth SIG, Inc. and any use of such marks by Honda Motor Co., Ltd. is under license. <sup>5</sup>HomeLink<sup>®</sup> is a registered trademark of Prince Corporation, a wholly owned subsidiary of Johnson Controls. <sup>6</sup>Shade of color may vary slightly from those depicted. <sup>7</sup>Car and Driver, January 2007. <sup>8</sup>Based on 2008 EPA mileage estimates, reflecting new EPA fuel economy methods beginning with 2008 models. Use for comparison purposes only. Do not compare to models before 2008. Your actual mileage will vary depending on how you drive and maintain your vehicle. EPA mileage estimates: Civic Coupe (AT), 25 city/36 hwy, Civic Hybrid, 40 city/45 hwy, Ridgeline, 15 city/20 hwy. <sup>9</sup>AT-PZEV rated by the California Air Resources Board (CARB). <sup>10</sup>PXC<sup>™</sup> is a trademark of Milliken & Company. <sup>11</sup>Michelin and PAX<sup>®</sup> are registered trademarks of Michelin North America, Inc. <sup>12</sup>For Pilot and Ridgeline models. XM<sup>®</sup> Satellite Radio requires XM subscription sold separately after 90-day trial period. All fees and programming subject to change. Subscriptions subject to Customer Agreement available at [xmradio.com](http://xmradio.com). XM Ready<sup>®</sup> audio system requires additional hardware, installation and XM subscription, all available at extra costs. See your dealer for details. XM service only available in the 48 contiguous United States. The XM name and XM Ready are registered trademarks of XM Satellite Radio Inc. <sup>13</sup>DVD Rear Entertainment System standard on SE. The factory-installed Navigation System and DVD Entertainment System are only available separately on EX-L models. <sup>14</sup>Premium unleaded fuel recommended when towing. Refer to owner's manual for additional towing information. <sup>15</sup>*Kelley Blue Book's* kbb.com 2007 Best Resale Value Award, Brand. <sup>16</sup>Based on 2007 model year study. IntelliChoice<sup>®</sup> Inc. [www.intellichoice.com](http://www.intellichoice.com). <sup>17</sup>*Automotive Lease Guide*, 2007 Industry Brand Residual Value Award. <sup>18</sup>**3-Year/36,000-Mile Limited Powertrain Warranty.** Ordinary maintenance or adjustments, parts subject to normal wear and replacement, and certain items are excluded. See your Honda dealer for terms and conditions of the limited warranties. **Always use seat belts and appropriate child seats. Children 12 and under are safest when properly restrained in the rear seat.** Specifications, features, illustrations and equipment shown in this brochure are based upon the latest available information at the time of printing. Although descriptions are believed to be correct, accuracy cannot be guaranteed. American Honda Motor Co., Inc. reserves the right to make changes at any time, without notice or obligation, in colors, specifications, accessories, materials and models. Some features mentioned herein are not available in all areas. See your Honda dealer for details. Some vehicles may be shown with optional equipment. Available = Optional. NA = Not applicable. All images contained herein are either owned by American Honda Motor Co., Inc., or used under a valid license. It is a violation of federal law to reproduce these images without express written permission from American Honda Motor Co., Inc. or the individual copyright owner of such images. Honda Financial Services is a DBA of American Honda Finance Corporation. Honda, the H-mark symbol, Honda Care, HondaJet, Honda Satellite-Linked Navigation System, ACE, Advanced Compatibility Engineering, Drive-by-Wire, HandsfreeLink, In-Bed Trunk, Magic Seat, Maintenance Minder, Real Time 4-Wheel Drive, Variable Cylinder Management, VCM, Variable Torque Management, VT-M-4, Vehicle Stability Assist, VSA, VTEC and i-VTEC are trademarks of Honda Motor Co., Ltd. © 2007 American Honda Motor Co., Inc. Printed in U.S.A. 9/2007 1.2MM.