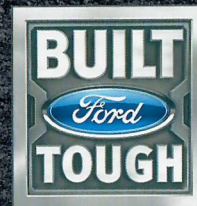


# COMMERCIAL VEHICLES

2019







# READY TO WORK? FOLLOW THE LEADER.

**AMERICA'S BEST-SELLING LINE OF COMMERCIAL VEHICLES FOR 33 STRAIGHT YEARS.\*** From F-Series trucks to cutaways to cargo and passenger vans, Ford delivers the most complete line of Class 1-7 work trucks around. For starters, all F-Series pickup truck bodies and cargo beds are made from high-strength, military-grade, aluminum alloy. The weight savings allowed us to upgrade essential systems and components that work the hardest. To us, it's always been about the work. And always will be.

**BUILT FORD TOUGH®** testing anchors the advanced materials and proven powertrains of Ford trucks. Along with the rugged dependability and hardy work ethic of Ford vans. Innovative technology, integrated into the vehicle design, allows our commercial vehicles to help you work safe. And smart. Whatever your business, our business is helping it thrive. By making you as productive as possible. Follow the latest at [facebook.com/fordmeansbusiness](https://facebook.com/fordmeansbusiness).



**THE ALL-NEW 2019 RANGER** arrives with best-in-class<sup>3</sup> credentials: overall max. payload capacity of 1,860 lbs;<sup>4</sup> max. gas towing capacity of 7,500 lbs;<sup>4</sup> and 310 lb.-ft. of gas torque. Plus, Ranger is the most fuel-efficient gas-powered midsize pickup in America.<sup>5</sup> Combine that with a mix of standard and available Ford Co-Pilot360™ Technology driver-assist features, and Ranger is more than ready to take its place in the Ford Commercial Vehicle lineup.

\*Based on IHS Markit CY1985-2017 US TIP Registrations excluding registrations to individuals. TIP Registrations prior to 2010 do not include all GVW 1 and 2 vehicles. \*6000-series aluminum alloy. \*Class is Midsize Pickups based on Ford segmentation. \*Max. Payload of 1,860 lbs. on SuperCab 4x2. Max. Towing of 7,500 lbs. when properly equipped. \*EPA-estimated ratings: 21 mpg city/26 mpg hwy/23 mpg combined, 2.3L engine 4x2. Actual mileage will vary. Vehicles throughout this brochure are shown with optional features and aftermarket upfit equipment, and without standard antenna.

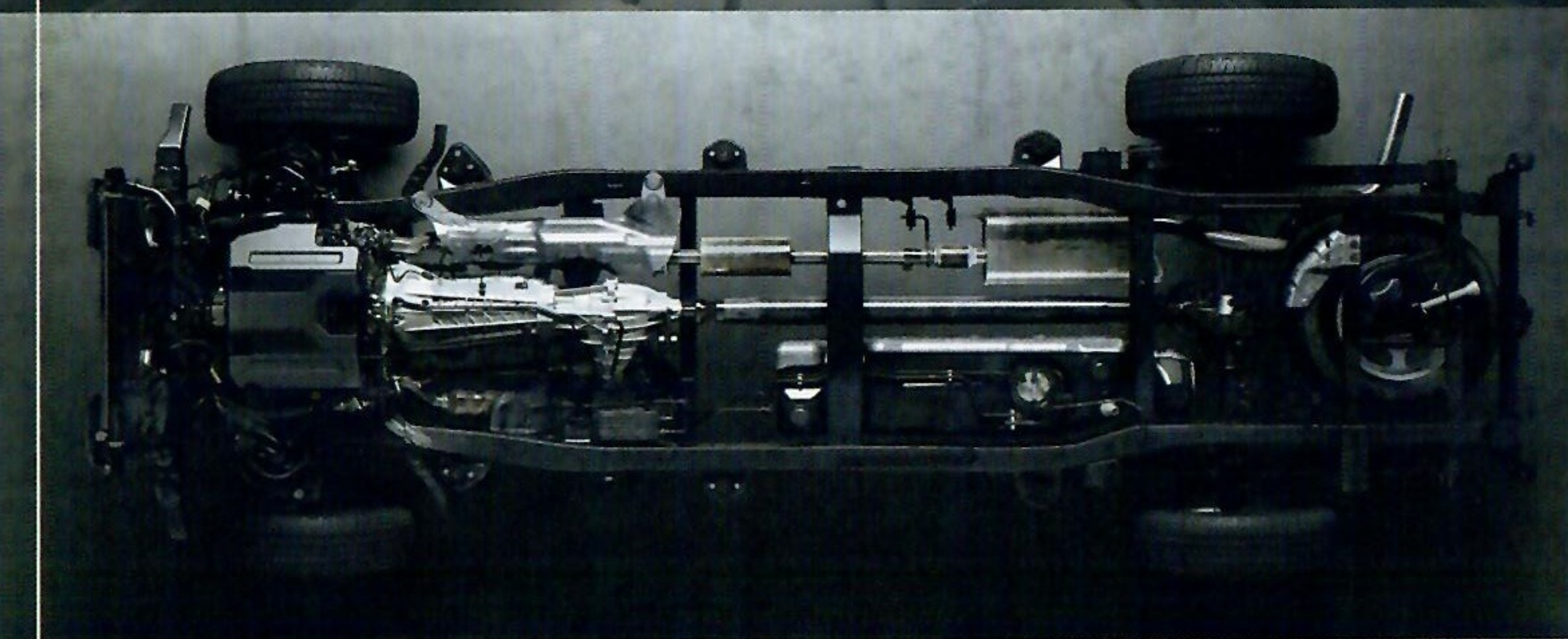


THE 2019 FORD F-150 POWERS AHEAD. FEATURING 6 ENGINE CHOICES, ALONG WITH A FIRST-IN-CLASS<sup>1</sup> 10-SPEED AUTOMATIC TRANSMISSION WITH SELECTSHIFT® CAPABILITY. 3 CAB TYPES, INCLUDING THE ULTRA-SPACIOUS SUPERCREW®. 3 BOX LENGTHS, WITH STEPS ON ALL 3 SIDES<sup>2</sup> THAT INCLUDE DEPLOYABLE BOX SIDE STEPS<sup>2</sup> FOR EVERY LENGTH. PLUS, F-150 IS AVAILABLE WITH MULTIPLE FORD CO-PILOT360™ TECHNOLOGY DRIVER-ASSIST FEATURES.<sup>3</sup> THESE CONSTANT INNOVATIONS HELP F-150 KEEP DELIVERING WHAT MATTERS MOST. A BUILT FORD TOUGH® WORKHORSE THAT'S PROVEN ITSELF. YEAR AFTER PUNISHING YEAR.



Make towing easier than ever by utilizing innovative Ford Co-Pilot360 Technology such as Pro Trailer Backup Assist,<sup>2</sup> BLIS® (Blind Spot Information System) with Trailer Coverage,<sup>2</sup> Trailer Sway Control, Hill Start Assist, and our 360-Degree Camera with Split-View Display.<sup>2</sup>

The high-strength, military-grade, aluminum alloy<sup>4</sup> of the F-150 body and cargo box is hardened through heat treating to produce greater strength. Gauge, or thickness, is also increased where needed to achieve extra strength without increasing weight. The high-strength-steel frame with 8 rugged crossmembers forms the perfect foundation. Today's F-150 now achieves best-in-class max. ratings for: overall towing,<sup>5</sup> overall payload,<sup>6</sup> and an available diesel EPA-estimated fuel economy rating of 30 mpg hwy.<sup>7</sup> That's leadership that counts. All day long.



## BEST-IN-CLASS

510 lb.-ft. of torque/450 horsepower<sup>8</sup>

440 lb.-ft. of diesel torque<sup>2</sup>

13,200 lbs. max. towing capacity<sup>5</sup>

11,500 lbs. max. diesel<sup>2</sup>  
towing capacity<sup>9</sup>

3,270 lbs. max. payload capacity<sup>6</sup>

2,020 lbs. max. diesel<sup>2</sup>  
payload capacity<sup>9</sup>

## CLASS-EXCLUSIVE

Pro Trailer Backup Assist<sup>2</sup>

Smart Trailer Tow Connector<sup>2</sup>

PowerScope® power-folding/power-telescoping trailer tow mirrors<sup>2</sup>

Stowable loading ramps<sup>2</sup>

Standard Auto Start-Stop Technology

## KEY FEATURES

FordPass Connect™ with 4G LTE Wi-Fi hotspot<sup>2,10</sup>

SYNC® 3 with Apple CarPlay™ and Android Auto™ compatibility<sup>2,11</sup>

BLIS (Blind Spot Information System) with Trailer Coverage and Cross-Traffic Alert<sup>2</sup>

Tailgate step<sup>2</sup>

Adaptive Cruise Control with Stop-and-Go<sup>2</sup>

Fleet telematics modem<sup>2,12</sup>

# F-150

<sup>1</sup>Class is Full-Size Pickups under 8,500 lbs. GVWR, based on Ford segmentation. <sup>2</sup>Available feature. <sup>3</sup>Driver-assist features are supplemental and do not replace the driver's attention, judgment and need to control the vehicle. <sup>4</sup>6000-series aluminum alloy. <sup>5</sup>Max. towing of 13,200 lbs. on SuperCrew 4x2, 156.8" WB, 3.5L EcoBoost® engine and optional equipment. <sup>6</sup>Max. payload of 3,270 lbs. on Regular Cab 4x2, 141.1" WB, 5.0L V8 engine and optional equipment. <sup>7</sup>EPA-estimated ratings: 22 mpg city/30 mpg hwy/25 mpg combined, 3.0L Power Stroke® V6 Turbo Diesel, 4x2. <sup>8</sup>High-Output 3.5L EcoBoost engine. Horsepower and torque ratings achieved with 93-octane fuel. <sup>9</sup>Max. diesel towing of 11,500 lbs. and max. diesel payload of 2,020 lbs. on SuperCab 4x2, 145" WB, 3.0L Power Stroke V6 Turbo Diesel and optional equipment. <sup>10</sup>Certain restrictions, 3rd-party terms, or message and data rates may apply. See footnote 6 on Specifications pages, and your Ford Dealer for details. <sup>11</sup>Requires phone with active data service and compatible software. SYNC does not control 3rd-party products while in use. 3rd parties are solely responsible for their respective functionality. <sup>12</sup>Late availability.

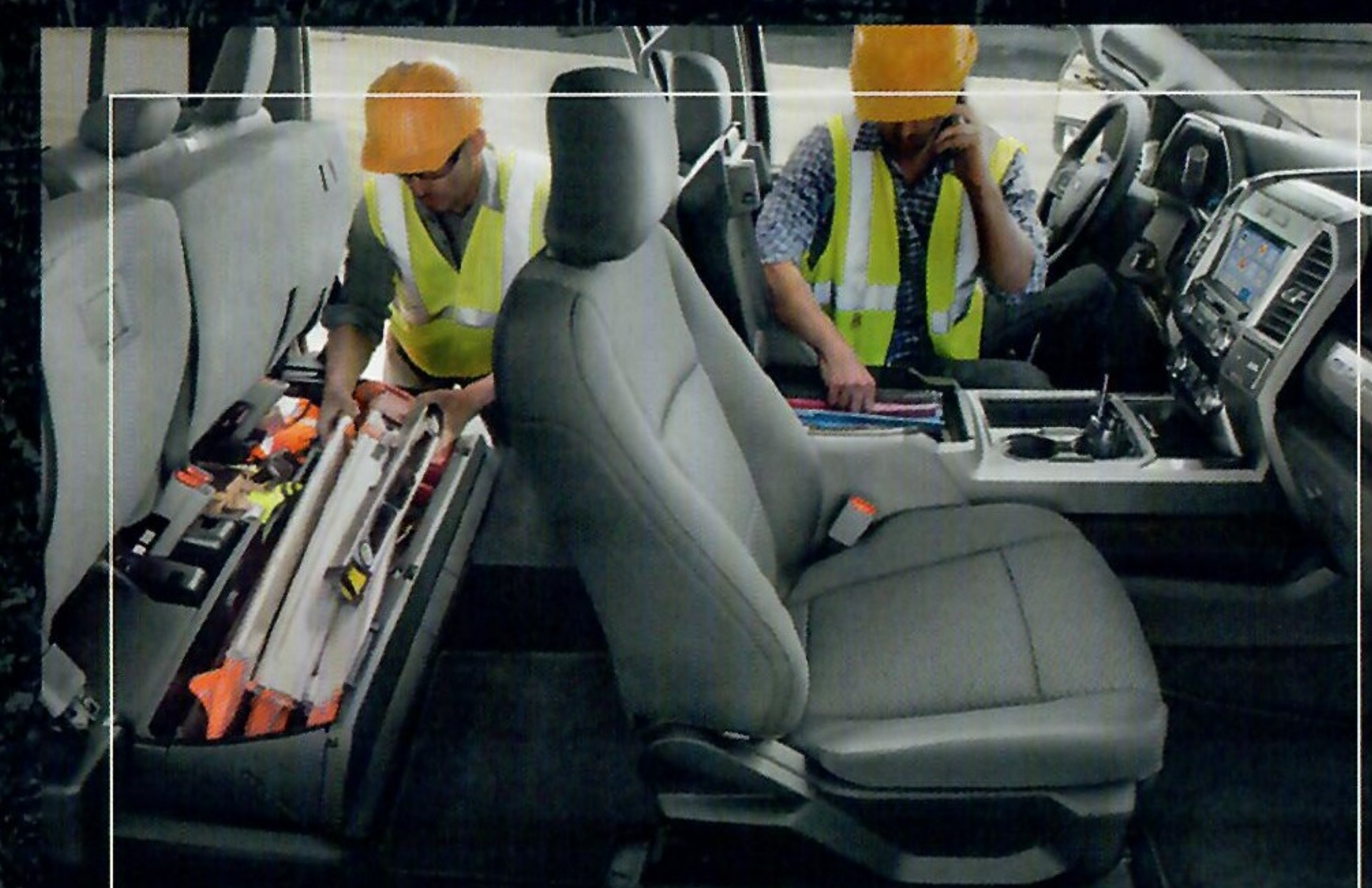


THIS BEAST IS SOMETHING SPECIAL. “WHAT A WORKHORSE,” SAYS *MOTOR TREND*. DAY OR NIGHT, THIS IS THE TOOL YOU NEED TO FINISH ANY JOB. ITS HEAVILY FORTIFIED CARGO BOX: IN 6.75' AND 8' LENGTHS. AROUND AND INSIDE THAT BOX: AN AMAZING ARRAY OF AVAILABLE CLASS-EXCLUSIVE<sup>1</sup> TECHNOLOGY. LARGE TRAILER HITCHES: BUILT RIGHT INTO THE FRAME AND, ON MANY CONFIGURATIONS, WEIGHT-CARRYING UP TO THE MAX. TOW RATINGS.<sup>2</sup> EVERY DAY, IT SHOWS UP READY FOR WORK. THE 2019 F-SERIES SUPER DUTY.<sup>®</sup>



**“HIGHEST RATED  
LARGE HEAVY DUTY PICKUP  
IN INITIAL QUALITY”<sup>3</sup>**  
— J.D. Power, 2018

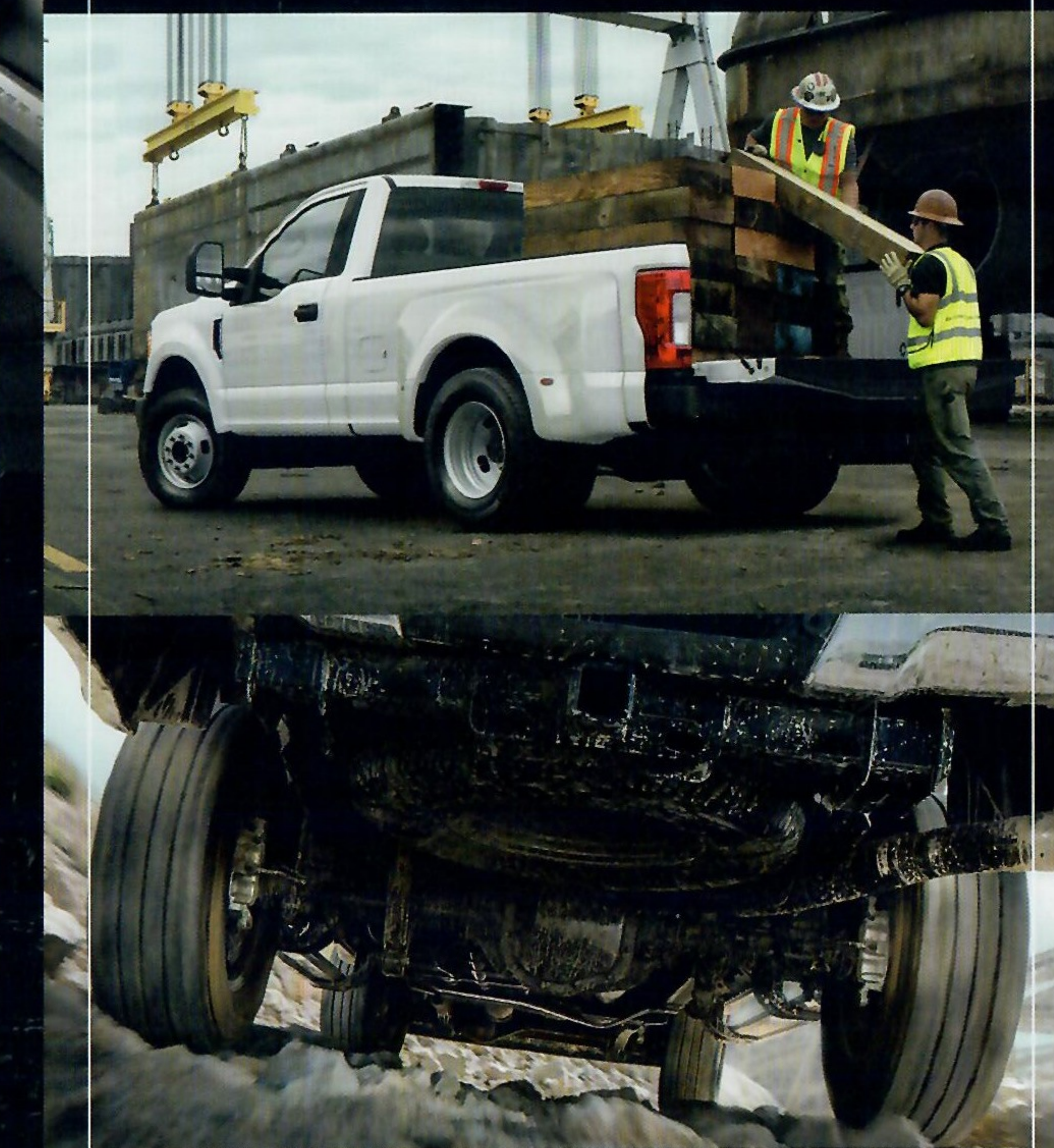
# SUPER DUTY PICKUP



Smart storage is everywhere in Super Duty. Even under the rear seat. Collapsible under-seat storage<sup>4,5</sup> can be raised, divided and locked when the seat is folded down, then folded into the floor when not in use for a convenient flat load floor. Two glove boxes include a unique upper compartment for additional storage space. While the front center console<sup>4</sup> is large enough to hang file folders.

<sup>1</sup>Class is Full-Size Pickups over 8,500 lbs. GVWR, based on Ford segmentation. <sup>2</sup>When properly configured. See Capabilities in charts on Specifications pages for maximum ratings by configuration. <sup>3</sup>The Ford Super Duty received the lowest rate of reported problems (tie) among Large Heavy Duty Pickups in the J.D. Power 2018 U.S. Initial Quality Study of new vehicle owners' experiences with their own vehicle after 90 days of ownership. Visit [jdpower.com/awards](http://jdpower.com/awards). <sup>4</sup>Available feature. <sup>5</sup>Crew Cab only. <sup>6</sup>6000-series aluminum alloy. <sup>7</sup>Max. towing of 35,000 lbs. on F-450 Regular Cab 4x2. <sup>8</sup>Max. conventional towing of 21,000 lbs. on DRW, F-350/F-450, Diesel, and optional equipment. <sup>9</sup>Max. payload of 7,640 lbs. on F-350 DRW, Gas, Regular Cab 4x2. <sup>10</sup>Certain restrictions, 3rd-party terms, or message and data rates may apply. See footnote 6 on Specifications pages, and your Ford Dealer for details. <sup>11</sup>Requires phone with active data service and compatible software. SYNC does not control 3rd-party products while in use. 3rd parties are solely responsible for their respective functionality. <sup>12</sup>Late availability.

Super Duty capability begins with a fully boxed ladder frame made of 95% high-strength steel. It continues with a high-strength, military-grade, aluminum alloy body and cargo bed.<sup>6</sup> Weight savings from this metallurgical marvel were plowed directly into upgrading essential components that work the hardest – axles, leaf springs, transfer case, driveline and trailer hitches.



## BEST-IN-CLASS

- 935 lb.-ft. of diesel torque
- 450 diesel horsepower
- 430 lb.-ft. of gas torque
- 35,000 lbs. max. towing capacity<sup>7</sup>
- 21,000 lbs. max. conventional towing capacity<sup>8</sup>
- 7,640 lbs. max. payload capacity<sup>9</sup>

## CLASS-EXCLUSIVE

- Adaptive Cruise Control & Forward Collision Warning with Brake Support<sup>4</sup>
- BLIS<sup>®</sup> with Trailer Coverage and Cross-Traffic Alert<sup>4</sup>
- Individual Trailer Tire Pressure Monitoring System<sup>4</sup>
- Adaptive Steering<sup>4</sup>
- Tailgate Step<sup>4</sup>
- Utility Lighting System<sup>4</sup>

## KEY FEATURES

- FordPass Connect<sup>™</sup> with 4G LTE Wi-Fi hotspot<sup>4,10</sup>
- SYNC<sup>®</sup> 3 with Apple CarPlay<sup>™</sup> and Android Auto<sup>™</sup> compatibility<sup>4,11</sup>
- Up to 7 cameras<sup>4</sup>
- Factory-installed, customer-placed trailer camera<sup>4</sup>
- Trailer Reverse Guidance<sup>4</sup>
- Fleet telematics modem<sup>4,12</sup>



# SUPER DUTY CHASSIS CAB



WORK HARD. WORK SMART. IN SUPER DUTY® CHASSIS CAB. AFT-OF-AXLE FRAME EXTENSIONS:<sup>1</sup> PROVIDE CONFIGURATION FLEXIBILITY. A LIVE-DRIVE POWER TAKEOFF (PTO) PROVISION:<sup>1</sup> HELPS POWER VITAL ACCESSORIES – WHETHER THE TRUCK IS MOVING OR NOT. ANY OF 3 ENGINES POWER YOU THROUGH THE TOUGH WORK YOU FACE EVERY DAY. OUT HERE, IT MATTERS HOW YOU FINISH. AND CHASSIS CAB HELPS YOU FINISH JUST THE WAY YOU STARTED: STRONG.

Its high-strength-steel frame, fully boxed under the cab and forward, is engineered to handle a wide range of upfits: from flat beds and dump beds to wrecker, service and delivery bodies. Up to 10 crossmembers enhance strength, with key crossmembers through-welded to increase stiffness. A first-in-class<sup>2</sup> high-strength, military-grade, aluminum alloy cab<sup>3</sup> reduces body weight. Ford engineers reinvested those weight savings into strengthening the frame and key driveline components. Bottom line: The 2019 Super Duty Chassis Cab can carry the weight of your world on its shoulders.



A Programmable Upfitter Interface Module<sup>1</sup> gives you the ability to deliver a finished upfit, complete with “smart controls,” to better satisfy the needs of your customer. Plus, 6 standard auxiliary upfitter switches in the cab help operate a variety of powered options. One of which could be a lift bucket, sprayer pump or snow plow powered by the class-exclusive live-drive PTO provision.<sup>1</sup>



## BEST-IN-CLASS

31,900 lbs. max. towing capacity<sup>4</sup>

40,000 lbs. max. Gross Combined Weight Rating (GCWR)<sup>4</sup>

12,750 lbs. max. payload capacity<sup>4</sup>

7,500 lbs. max. Front Gross Axle Weight Rating (FGAWR)<sup>4</sup>

## CLASS-EXCLUSIVE

Most configurations

Programmable Upfitter Interface Module (UIM)<sup>1</sup>

Most available CNG/propane upfit configurations

Live-drive PTO provision<sup>1</sup>

Collapsible under-seat rear storage<sup>1,5</sup>

## KEY FEATURES

FordPass Connect™ with 4G LTE Wi-Fi hotspot<sup>1,6</sup>

SYNC® 3 with Apple CarPlay™ and Android Auto™ compatibility<sup>1,7</sup>

110V/400W AC power outlets in cab<sup>1</sup>

Rear View Camera and prep kit<sup>1</sup>

Fleet telematics modem<sup>1</sup>

AdvanceTrac® with RSC® (Roll Stability Control™)

Exterior backup alarm<sup>1</sup>

Advanced Security Pack with inclination/intrusion sensors<sup>1</sup>

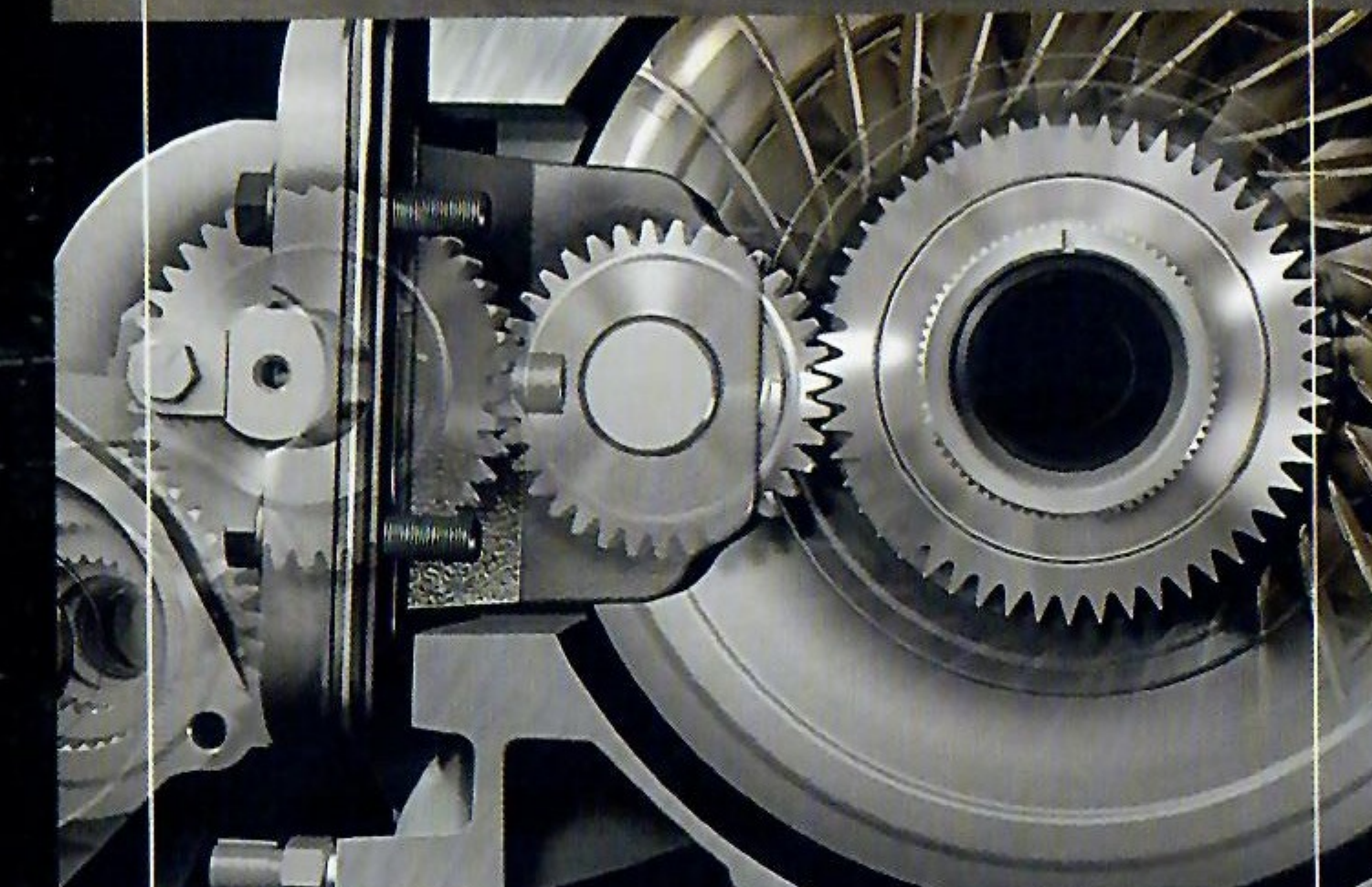
<sup>1</sup>Available feature. <sup>2</sup>Class 3–5 Chassis Cabs based on Ford segmentation. <sup>3</sup>6000-series aluminum alloy. <sup>4</sup>When properly configured. <sup>5</sup>Crew Cab only. <sup>6</sup>Certain restrictions, 3rd-party terms, or message and data rates may apply. See footnote 6 on Specifications pages, and your Ford Dealer for details. <sup>7</sup>Requires phone with active data service and compatible software. SYNC does not control 3rd-party products while in use. 3rd parties are solely responsible for their respective functionality.



WITH THE HELP OF OUR BUILT FORD TOUGH® F-650/F-750 MEDIUM-DUTY TRUCKS, FORD IS COMMITTED TO HELPING YOU GROW YOUR BUSINESS. COMBINING TECHNOLOGICAL INNOVATION WITH A STRONG WORK ETHIC, WE BUILD TRUCKS – RIGHT HERE IN AMERICA¹ – WITH THE FLEXIBILITY TO MEET YOUR BUSINESS NEEDS, AS WELL AS THE CAPABILITY TO GET THE JOB DONE. SO FILL IT. PULL IT. HAUL IT. NO SWEAT. FROM F-650 PRO LOADER® TO F-750 TRACTOR, THE 2019 FORD MEDIUM-DUTY TRUCK LINEUP IS READY FOR WORK. PLUS, IT'S DESIGNED, ENGINEERED, MANUFACTURED, ASSEMBLED, WARRANTED AND SERVICED – ALL BY FORD.



## F-650/F-750 SUPER DUTY



To power your rig, your choice includes best-in-class² standard diesel horsepower and torque, or a class-exclusive V10 gas engine. And both diesel and gas engines have a stationary- and mobile-mode live-drive power takeoff (PTO)³ provision to power PTO-driven accessories like dump bodies, sprayer pumps and more.

12 Regular Cab, 11 SuperCab and 11 Crew Cab CA options make Ford medium-duty trucks some of the most adaptable upfit vehicles on the road. With a choice of 34 cab and clean CA combinations, from 84" to 207." A clean CA helps make it easy to accommodate tow truck, dump truck, ambulance bodies and other applications, plus it can help lower your cost to upfit. 34" standard frame widths define the F-650/F-750 chassis, enabling easy upfitting with any combination. Custom frame-rail drilling³ eliminates upfitter drilling into high-strength steel – maintaining Ford corrosion protection.



### BEST-IN-CLASS

Standard diesel horsepower (270) and torque (675 lb.-ft.) from the 6.7L Power Stroke® V8 Turbo Diesel

### CLASS-EXCLUSIVE

6.8L Triton® 3-valve gas V10 engine³

PowerScope® power-telescoping/-folding trailer tow mirrors³

### KEY FEATURES

37,000 lbs. max. gas Gross Combined Weight Rating (GCWR)⁴

50,000 lbs. max. diesel Gross Combined Weight Rating (GCWR)⁴

14,000 lbs. max. Front Gross Axle Weight Rating (FGAWR)⁴

TorqShift® HD 6-speed automatic transmission

Fleet telematics modem³,⁵

4 auxiliary upfitter switches located in the instrument panel

Body-builder wiring harness

Active regeneration control³ on diesel models

High-output alternator³ (240 amp) on gas-equipped models

Custom frame hole piercing³

Color-keyed safety belts with front-seat adjustable D-rings³

¹Assembled in the USA with domestic and foreign parts. ²Class 6–7 Conventional Chassis Cabs based on Ford segmentation. ³Available feature. ⁴When properly configured. Weight restrictions vary by model. ⁵Late availability.





NEW HID HEADLAMPS WITH SIGNATURE LED LIGHTING AND LED FOG LAMPS<sup>1</sup> HELP CREATE A DRAMATIC NEW LOOK FOR TRANSIT CONNECT. REDESIGNED SEATING ENHANCES INTERIOR COMFORT. YOUR CHOICE OF 2 NEW ENGINES INCLUDES A 2.0L GDI I-4<sup>1</sup> AND A 1.5L ECOBLUE<sup>®</sup> TCDI DIESEL.<sup>1,2</sup> PLUS, THERE'S AN ARRAY OF NEW STANDARD FORD CO-PILOT360<sup>™</sup> DRIVER-ASSIST TECHNOLOGIES,<sup>3</sup> SUCH AS PRE-COLLISION ASSIST WITH AUTOMATIC EMERGENCY BRAKING (AEB), WHICH INCLUDES PEDESTRIAN DETECTION AND FORWARD COLLISION WARNING. THE NEW 2019 TRANSIT CONNECT IS A SMART BUSINESS MOVE.



The new Transit Connect Cargo Van makes it easy to capitalize on every inch, starting with a max. payload rating of 1,570 lbs.<sup>4</sup> Fold the passenger seat down in LWB models for up to 145.8 cu. ft. of cargo room.<sup>4</sup> Items up to 4' wide, 4' tall, or over 9' long will fit inside.<sup>4</sup> The flat rear load floor, convenient tie-down hooks, and near-vertical walls help you make the best use of all that room. Plus, the durable vinyl floor covering is washable for quick cleanup. Add in a 38.3' curb-to-curb turning diameter (on SWB models) for negotiating tight spots, and you're ready to take your business everywhere you want to go.

Innovative conveniences like a new wireless charging pad<sup>1,5</sup> help Transit Connect lead the way with forward thinking. Heated sideview mirrors<sup>4</sup> and a QuickClear<sup>™</sup> electric windshield defroster<sup>4</sup> help you get on your way quickly when it's chilly outside. Conveniences like these make it easy to pilot Transit Connect equipped with the Taxi Package.



#### BEST-IN-CLASS<sup>6</sup>

Highest Overall Passenger Wagon EPA-Estimated Fuel Economy Ratings among Small Vans in the United States<sup>7</sup>

Most available seating configurations

America's best-selling compact cargo van<sup>8</sup>

87.6" LWB max. cargo length<sup>9</sup>

32.8" max. side cargo door opening width (LWB)

#### CLASS-EXCLUSIVE

1.5L EcoBlue TCDi diesel<sup>1,2</sup>

Pre-Collision Assist with AEB, including Pedestrian Detection and Forward Collision Warning

BLIS<sup>®</sup> (Blind Spot Information System) with Cross-Traffic Alert<sup>4</sup>

Lane-Keeping System with Driver Alert<sup>4</sup>

Adaptive Cruise Control<sup>4</sup>

Enhanced Active Park Assist<sup>4</sup>

Wireless charging pad<sup>1,5</sup>

#### KEY FEATURES

1,570 lbs. max. payload capacity (Cargo Van)<sup>4</sup>

1,380 lbs. max. payload capacity (Passenger Wagon)<sup>4</sup>

FordPass Connect<sup>™</sup> with 4G LTE Wi-Fi hotspot<sup>1,10</sup>

SYNC<sup>®</sup> 3 with Apple CarPlay<sup>™</sup> and Android Auto<sup>™</sup> compatibility<sup>4,11</sup>

<sup>1</sup>Available feature. <sup>2</sup>Available Spring 2019. <sup>3</sup>Driver-assist features are supplemental and do not replace the driver's attention, judgment and need to control the vehicle. <sup>4</sup>When properly configured. Cargo and load capacities limited by weight and weight distribution. <sup>5</sup>Available Qi wireless charging may not be compatible with all mobile phones. <sup>6</sup>Class is Small Vans based on Ford segmentation. <sup>7</sup>Passenger Wagon: EPA-estimated ratings: 24 mpg city/29 mpg highway/26 mpg combined, when equipped with 2.0L GDI I-4 FWD LWB with an 8-speed automatic transmission. Cargo Van: EPA-estimated ratings: 24 mpg city/27 mpg highway/25 mpg combined. 2.0L GDI I-4 with an 8-speed automatic transmission. Actual mileage will vary. <sup>8</sup>Based on total U.S. reported sales (2017 CY). <sup>9</sup>117.5" LWB Cargo Van with passenger seat folded down (101.7" SWB). <sup>10</sup>Certain restrictions, 3rd-party terms, or message and data rates may apply. See footnote 6 on Specifications pages, and your Ford Dealer for details. <sup>11</sup>Requires phone with active data service and compatible software. SYNC does not control 3rd-party products while in use. 3rd parties are solely responsible for their respective functionality.

# TRANSIT CONNECT CARGO VAN + PASSENGER WAGON



# TRANSIT CARGO VAN + PASSENGER VAN

RUN A BUSINESS? THEN YOU KNOW THE POWER OF NUMBERS. SO LET'S START WITH THE 2019 FORD TRANSIT CARGO VAN. 4,640 LBS. OF MAX. PAYLOAD.<sup>1</sup> A GROSS VEHICLE WEIGHT RATING (GVWR) OF 10,360 LBS.<sup>1</sup> ITS ABILITY TO CARRY UP TO 542.2 CU. FT. OF MAX. CARGO.<sup>1</sup> CHOOSE FROM 3 ENGINES, PLUS 3 ROOF HEIGHTS – LOW, MEDIUM AND HIGH – SO YOU CAN OPT FOR MORE INTERIOR HEAD ROOM AND CARRY LOADS THAT OTHERS WOULD HAVE TO LEAVE BEHIND.



Configured to seat up to 5, 8, 10, 12, 14 or 15<sup>2</sup> people, there's Transit Passenger Van. Haul up to 3,570 lbs. of max. payload.<sup>1</sup> In here, safety takes priority with a Safety Canopy® System with side-curtain airbags for all seating rows – including the industry's first 5-row side-curtain airbag on 15-passenger models.<sup>3</sup> Best-in-class<sup>4</sup> factory-built cargo capacity of 100.5 cu. ft. is available behind the last row of seats inside 15-passenger Extended Length (EL) models. 253° swing-out rear cargo doors<sup>2</sup> open extra-wide to allow for quick and easy access to all that space on both Cargo Van and Passenger Van.



81.5" max. interior height<sup>1</sup> is best in class, making it easy to stand upright and to carry the tallest items in Transit High Roof (HR) Cargo Van models. And D-pillar assist handles,<sup>2</sup> now optional with any roof height, help make getting in and out of the rear cargo area easy. Control up to 4 aftermarket items, such as auxiliary lighting, a compressor, and more with the upfitter switches<sup>2</sup> located in the center of your instrument panel. Explore all your upfit options at [transitupfits.com](http://transitupfits.com).



## BEST-IN-CLASS

Most vehicle configurations

400 lb.-ft. of gas torque<sup>2,5</sup>

Factory-built cargo capacity of 100.5 cu. ft. available behind last row of seats<sup>6</sup>

81.5" max. interior height<sup>7</sup>

Gas-powered max. cargo capacity of 487.2 cu. ft.<sup>8</sup> and max. payload capacity of 4,640 lbs.<sup>8</sup>

## KEY FEATURES

3,570 lbs. max. payload capacity (Passenger Van)

10,360 lbs. max. Gross Vehicle Weight Rating (GVWR)<sup>1</sup>

Seats up to 5, 8, 10, 12, 14 or 15 people (Passenger Van)<sup>2</sup>

Safety Canopy System with side-curtain airbags for:  
1st row (Cargo Van)  
All rows (Passenger Van)

SYNC® 3 with Apple CarPlay™ and Android Auto™ compatibility<sup>2,9</sup>

110V/150W AC power outlet in cab<sup>2</sup>

Rear View Camera and prep kit<sup>2</sup>

AdvanceTrac® with RSC® (Roll Stability Control™) and side-wind stabilization

Backup alarm<sup>2,10</sup>

Keyless-entry keypad<sup>2</sup>

<sup>1</sup>When properly configured. Passenger and cargo capacity limited by weight and weight distribution. <sup>2</sup>Available feature. <sup>3</sup>Always wear your safety belt and secure children in the rear seat. <sup>4</sup>Class is Full-Size Vans, based on Ford segmentation. Excluding other Ford vehicles. <sup>5</sup>3.5L EcoBoost® engine. <sup>6</sup>15-passenger LWB-EL models. <sup>7</sup>Transit HR models. <sup>8</sup>HR LWB-EL Cargo Vans. <sup>9</sup>Requires phone with active data service and compatible software. SYNC does not control 3rd-party software while in use. 3rd parties are solely responsible for their respective functionality. <sup>10</sup>Ford Licensed Accessory.



Whether you're moving people, tools, product or all of the above, 2019 Ford Transit Chassis Cabs and Transit Cutaways are Built Ford Tough® for business. Transit Chassis Cab has an enclosed passenger compartment and bare frame ready to accept aftermarket body modules, helping you create custom vehicles like cargo delivery flatbeds, utility cube trucks and more. Transit Cutaway, with its open passenger compartment, can be paired with specialty body modules such as shuttle or bus bodies. Inside, you'll appreciate a comfortable interior with a focus on the driver, with ergonomic gauges, controls and ample space.

#### KEY FEATURES

6,020 lbs. max. payload capacity<sup>1</sup>

10,360 lbs. max. Gross Vehicle Weight Rating (GVWR)<sup>1</sup>

Frame rail extension adapters that enable up to an 18' frame upfit

AdvanceTrac® with RSC® (Roll Stability Control™) and side-wind stabilization

Trailer sway control<sup>2</sup>

Tire Pressure Monitoring System<sup>2</sup>

Lane-Keeping Alert<sup>2</sup>

Backup alarm<sup>2,4</sup>

Keyless-entry keypad<sup>2</sup>



## TRANSIT CHASSIS CAB + CUTAWAY

## E-SERIES CUTAWAY + STRIPPED CHASSIS



E-Series Cutaways have proven their capability over decades of dependable use. A solid foundation for school buses, ambulances and other vocational vehicles, 2019 E-Series Cutaway models allow convenient access to the business end of the vehicle. A variety of prep packages – everything from Ambulance Prep and Motorhome Prep to Shuttle Bus and School Bus Prep Packages – are available.

<sup>1</sup>When properly configured. Cargo and load capacities limited by weight and weight distribution. <sup>2</sup>Available feature. Restrictions apply. See your dealer for details. <sup>3</sup>Late availability. <sup>4</sup>Ford Licensed Accessory. <sup>5</sup>Cutaway only.

#### KEY FEATURES

22,000 lbs. max. Gross Combined Weight Rating (GCWR)<sup>1</sup>

10,000 lbs. max. towing capacity<sup>1</sup>

9,040 lbs. max. payload capacity<sup>1</sup>

420 lb.-ft. of gas torque with the 6.8L V10 engine

6.2L V8 engine<sup>2</sup>

Fleet telematics modem<sup>2,3</sup>

4 auxiliary upfitter switches located at the top of the instrument panel<sup>2,5</sup>

SYNC® Voice Recognition Communications and Entertainment System<sup>2</sup>



SPECIFICATIONS



2019 RANGER

<b>Cabs: Trim Levels</b>	
SuperCab: XL, XLT, LARIAT	
SuperCrew®: XL, XLT, LARIAT	
<b>Engine</b>	
2.3L EcoBoost® I-4	
Horsepower	270 @ 5,500 rpm
Torque (lb.-ft.)	310 @ 3,000 rpm
<b>Transmission</b>	
10-speed SelectShift® automatic with progressive range select, and tow/haul and Sport modes	
<b>Capabilities (lbs.)<sup>2</sup></b>	
Max. GVWR	6,050
Max. GCWR	12,500
Max. Payload	1,860
Max. Conventional Towing	7,500



2019 F-150

<b>Cabs: Trim Levels</b>	
Regular Cab: XL, XLT	
SuperCab: XL, XLT, LARIAT, RAPTOR	
SuperCrew: XL, XLT, LARIAT, KING RANCH®, PLATINUM, LIMITED, RAPTOR	
<b>Engines</b>	
3.3L Ti-VCT V6 FFV	
Horsepower	290 @ 6,500 rpm
Torque (lb.-ft.)	265 @ 4,000 rpm
Alt. fuel capability: E85	
2.7L EcoBoost V6	
Horsepower	325 @ 5,000 rpm
Torque (lb.-ft.)	400 @ 2,750 rpm
5.0L Ti-VCT V8 FFV	
Horsepower	395 @ 5,750 rpm
Torque (lb.-ft.)	400 @ 4,500 rpm
Alt. fuel capability: E85	
3.5L EcoBoost	
Horsepower	375 @ 5,000 rpm
Torque (lb.-ft.)	470 @ 3,500 rpm
High-Output 3.5L EcoBoost	
Horsepower	450 @ 5,000 rpm <sup>1</sup>
Torque (lb.-ft.)	510 @ 3,500 rpm <sup>1</sup>
3.0L Power Stroke® V6 Turbo Diesel	
Horsepower	250 @ 3,250 rpm
Torque (lb.-ft.)	440 @ 1,750 rpm
<b>Transmissions</b>	
6-speed SelectShift automatic with tow/haul and Sport modes (3.3L only)	
10-speed SelectShift automatic with progressive range select, and tow/haul and Sport modes	
<b>Capabilities (lbs.)<sup>2</sup></b>	
Max. GVWR	7,850
Max. GCWR	18,400
Max. Payload	3,270
Max. Conventional Towing	13,200



2019 F-250/F-350/F-450  
SUPER DUTY® PICKUP

<b>Cabs: Trim Levels</b>	
Regular Cab: XL, XLT	
SuperCab: XL, XLT, LARIAT	
Crew Cab: XL, XLT, LARIAT, KING RANCH, PLATINUM, LIMITED	
<b>Engines</b>	
6.2L 2-Valve V8 FFV	
Horsepower	385 @ 5,750 rpm
Torque (lb.-ft.)	430 @ 3,800 rpm
Alt. fuel capability: E85	
Alt. fuel options: <sup>3</sup> CNG, Propane	
6.7L Power Stroke V8 Turbo Diesel	
Horsepower	450 @ 2,800 rpm
Torque (lb.-ft.)	935 @ 1,800 rpm
Alt. fuel capability: B20	
<b>Transmissions</b>	
TorqShift® heavy-duty 6-speed SelectShift automatic with tow/haul mode	
TorqShift-G 6-speed SelectShift automatic with tow/haul mode (F-250 6.2L only)	
<b>Capabilities (lbs.)<sup>2</sup></b>	
	<b>F-250 F-350 F-450</b>
Max. GVWR	10,000 14,000 14,000
Max. GCWR	25,700 40,000 43,300
Max. Payload	4,270 7,640 6,190
Max. Conventional Towing	18,000 21,000 21,000
Max. 5th-Wheel Towing	18,000 27,500 27,500
Max. Gooseneck Towing	18,500 32,000 35,000



2019 F-350/F-450/F-550  
SUPER DUTY CHASSIS CAB

<b>Cabs: Trim Levels</b>	
Regular Cab: XL, XLT	
SuperCab: XL, XLT, LARIAT	
Crew Cab: XL, XLT, LARIAT	
<b>Engines</b>	
6.2L 2-Valve V8 FFV	
Horsepower	385 @ 5,750 rpm
Torque (lb.-ft.)	430 @ 3,800 rpm
Alt. fuel capability: E85	
Alt. fuel options: <sup>3</sup> CNG, Propane	
6.8L Triton® 3-Valve Gas V10 <sup>4</sup>	
Horsepower	288 @ 4,000 rpm
Torque (lb.-ft.)	424 @ 3,000 rpm
Alt. fuel options: <sup>3</sup> CNG, Propane	
6.7L Power Stroke V8 Turbo Diesel	
Horsepower	330 @ 2,600 rpm
Torque (lb.-ft.)	750 @ 2,000 rpm
Alt. fuel capability: B20	
<b>Transmission</b>	
TorqShift heavy-duty 6-speed SelectShift automatic with tow/haul mode	
<b>Capabilities (lbs.)<sup>2</sup></b>	
	<b>F-350 F-450 F-550</b>
Max. GVWR	14,000 16,500 19,500
Max. GCWR	32,000 34,500 40,000
Max. Payload	7,940 9,850 12,750
Max. 5th-Wheel Towing	24,500 26,400 31,900



2019 F-650/F-750  
SUPER DUTY

<b>Cabs: Series</b>	
Regular Cab: F-650 Pro Loader®, F-650, F-650 Tractor, F-750, F-750 Tractor	
SuperCab: F-650 Pro Loader, F-650, F-650 Tractor, F-750, F-750 Tractor	
Crew Cab: F-650 Pro Loader, F-650, F-650 Tractor, F-750, F-750 Tractor	
<b>Engines</b>	
6.7L Power Stroke V8 Turbo Diesel	
Horsepower Range	162 @ 6,500 rpm
Torque (lb.-ft.)	144 @ 4,500 rpm
2.5L i-VCT I-4 (Fleet only)	
Horsepower	169 @ 6,000 rpm
Torque (lb.-ft.)	171 @ 4,500 rpm
Alt. fuel options: <sup>3</sup> CNG, Propane	
1.5L EcoBlue® TCDi Diesel	
Available Spring 2019	
<b>Transmission</b>	
8-speed SelectShift automatic transmission with Auto Start-Stop Technology	
6-speed SelectShift automatic (Fleet only)	
<b>Capabilities (lbs.)<sup>2</sup></b>	
	<b>GVWR</b>
F-650 Pro Loader (Diesel)	22,000 - 26,000
F-650 Pro Loader (Gas)	22,000 - 26,000
F-650 (Diesel & Gas)	26,000 - 29,000
F-650 Tractor (Diesel)	27,500 - 29,000
F-750 (Diesel)	31,000 - 37,000
F-750 (Gas)	31,000 - 33,000
F-750 Tractor (Diesel)	31,000 - 37,000



2019 TRANSIT CONNECT

<b>Cabs: Trim Levels</b>	
Cargo Van: XL, XLT	
Passenger Wagon: XL, XLT, Titanium	
<b>Engines</b>	
2.0L GDI I-4 FFV	
Horsepower	162 @ 6,500 rpm
Torque (lb.-ft.)	144 @ 4,500 rpm
2.5L i-VCT I-4 (Fleet only)	
Horsepower	169 @ 6,000 rpm
Torque (lb.-ft.)	171 @ 4,500 rpm
Alt. fuel options: <sup>3</sup> CNG, Propane	
1.5L EcoBlue® TCDi Diesel	
Available Spring 2019	
<b>Transmission</b>	
8-speed SelectShift automatic transmission with Auto Start-Stop Technology	
6-speed SelectShift automatic (Fleet only)	
<b>Capabilities (lbs.)<sup>2</sup></b>	
	<b>GVWR</b>
Cargo Van	5,302
Max. GVWR	6,170
Max. GCWR	1,570
Max. Payload	2,000
Max. Towing	
Passenger Wagon	5,450
Max. GVWR	6,500
Max. GCWR	1,380
Max. Payload	2,000
Max. Towing	



2019 TRANSIT

<b>Cabs: Trim Levels</b>	
Cargo Van: Transit 150, Transit 250, Transit 350, Transit 350 Heavy-Duty (DRW)	
Passenger Van: Transit 150 XL, Transit 150 XLT, Transit 350 XL, Transit 350 XLT, Transit 350 Heavy-Duty XL (DRW), Transit 350 Heavy-Duty XLT (DRW)	
Cutaway & Chassis Cab: Transit 250, Transit 350, Transit 350 Heavy-Duty (DRW)	
<b>Engines</b>	
3.7L Ti-VCT V6	
Horsepower	275 @ 6,000 rpm
Torque (lb.-ft.)	260 @ 4,000 rpm
Alt. fuel capability: <sup>5</sup> E85	
Alt. fuel options: <sup>3</sup> CNG, Propane	
3.2L Power Stroke I-5 Turbo Diesel	
Horsepower	185 @ 3,000 rpm
Torque (lb.-ft.)	350 @ 1,500 - 2,500 rpm
Alt. fuel capability: B20	
3.5L EcoBoost V6	
Horsepower	310 @ 5,500 rpm
Torque (lb.-ft.)	400 @ 2,500 rpm
<b>Transmission</b>	
6-speed SelectShift automatic	
<b>Capabilities (lbs.)<sup>2</sup></b>	
	<b>Cargo Van Passenger Van Cutaway &amp; Chassis Cab</b>
Max. GVWR	10,360 10,360 10,360
Max. GCWR	13,500 11,200 13,500
Max. Payload	4,640 3,570 6,020
Max. Towing	7,500 5,000 7,500



2019 E-SERIES

<b>Cabs: Trim Levels</b>	
Cutaway: E-350 (SRW/DRW)/E-450 (DRW)	
Stripped Chassis: E-350 (DRW)/E-450 (DRW)	
<b>Engines</b>	
6.2L 2-Valve V8 FFV	
Horsepower	331 @ 5,500 rpm
Torque (lb.-ft.)	356 @ 4,000 rpm
Alt. fuel capability: E85	
Alt. fuel options: <sup>3</sup> CNG, Propane	
6.8L 2-Valve V10	
Horsepower	305 @ 4,250 rpm
Torque (lb.-ft.)	420 @ 3,250 rpm
Alt. fuel options: <sup>3</sup> CNG, Propane	
<b>Transmission</b>	
6-speed TorqShift automatic O/D	
<b>Capabilities (lbs.)<sup>2</sup></b>	
	<b>Cutaway</b>
Max. GVWR	14,500
Max. GCWR	22,000
Max. Payload	9,040
Max. Towing	10,000

Android Auto is a trademark of Google Inc. Apple CarPlay is a trademark of Apple Inc., registered in the U.S. and other countries. King Ranch is a registered trademark of King Ranch, Inc.

<sup>1</sup>Horsepower and torque ratings achieved with 93-octane fuel. <sup>2</sup>Maximum capabilities shown are for properly configured vehicles with required equipment and a 150-lb. driver. Weight of additional options, equipment, passengers and cargo must be deducted from this weight. Cutaway ratings are based on incomplete vehicles. Final vehicle manufacturer weights and ratings will vary due to input and modification requirements. <sup>3</sup>Requires CNG/Propane Gaseous Engine Prep Package and aftermarket upfit. <sup>4</sup>Available for in-stock purchase only. <sup>5</sup>Restrictions apply. <sup>6</sup>FordPass Connect™ includes complimentary 1-year subscription for remote features, excluding Wi-Fi hotspot, and starts with vehicle sale date, after which fees apply. Subscription is subject to compatible 4G LTE network availability. Certain restrictions, 3rd-party terms, or message and data rates may apply. Evolving technology/cellular networks may affect future functionality. Wi-Fi hotspot includes complimentary wireless data trial that begins upon AT&T activation and expires at the end of 3 months or when 3GB of data is used, whichever comes first, but cannot extend beyond the complimentary subscription period for remote features. To activate, go to [www.att.com/ford](http://www.att.com/ford).



[ford.com/commercial-truck](http://ford.com/commercial-truck)



Ford Division reserves the right to change product specifications at any time without incurring obligations. Some information and photos in this brochure are preliminary and are subject to change. Some features shown and described may be optional. Following publication of this brochure, certain changes in standard equipment, options and the like, or product availability or delays may have occurred which would not be included in these pages. Your Ford Dealer is the best source for up-to-date information. Claims based on publicly available information and Ford certification data available at the time of printing.  
©2018 Ford Motor Company. Printed in the U.S.A. Please recycle. 19CTASCAT

DEZO'S GARAGE



MIX  
Paper from  
responsible sources  
FSC® C101537