

The Great New PLYMOUTH

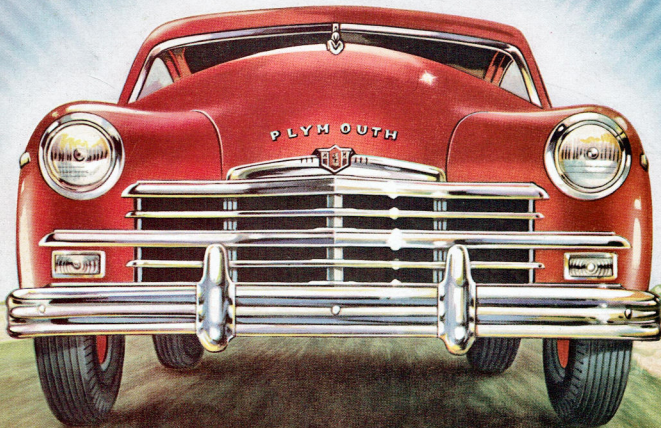
MAJESTIC MOTORS
3290 SO. ACOMA
ENGLEWOOD, COLO.



FAMOUS PLYMOUTH FIRSTS

IN THE
LOW-PRICED FIELD

- HYDRAULIC BRAKES
- FLOATING POWER
- HOTCHKISS DRIVE
- FULL-PRESSURE
ENGINE LUBRICATION
- FULLY-AUTOMATIC
SPARK CONTROL
- DOWN-DRAFT
CARBURETOR
- SAFETY ALL
STEEL BODY
- RUSTPROOFING
- OIL FILTER STANDARD
EQUIPMENT
- HYPOID REAR AXLE
- SAFETY-RIM WHEELS
- CHAIN-DRIVEN
CAMSHAFT
- OILITE
- GASOLINE FILTER
- INDEPENDENT
HAND BRAKE
- FOUR-RING PISTONS
- SAFETY SIGNAL
SPEEDOMETER
- ROTARY
DOOR LATCHES
- COUNTERBALANCED
TRUNK LID
- SAFE-GUARD BRAKES
- SUPER-CUSHION TIRES
- AIRFOAM
SEAT CUSHIONS
- CHROME
COMPRESSION
RING
- AUTOMATIC CHOKE



Compare
PLYMOUTH
for

COMFORT

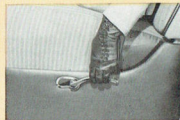
Among other features not shown here that contribute to Plymouth's famous Air Pillow Ride are Super Cushion Tires, "Sea Leg" rear Shock Absorbers, Hotchkiss Drive and Independent Front Wheel Springing.



Chair-height seats are cradled between the wheels to give you Plymouth's famous Air Pillow Ride. Airfoam seat cushions are available at slight extra cost for both front and rear seats on 118½ inch wheelbase models.



Rear window ventilators open and close easily, give complete freedom from annoying drafts. Locks are tamper-proof.



Easy-to-reach control lever at left of driver allows quick adjustment of front seat for proper leg room and driving comfort.



The wider door opens all the way and "locks" in position. Floor-level sill prevents tripping. The new Plymouth is an amazingly easy car to get in and out of!



Footrest is stationary in Special De Luxe Four Door Sedan. When front seat is moved, the footrest is undisturbed and leg room remains the same.



**FAMOUS
PLYMOUTH
FIRSTS**

IN THE
LOW-PRICED FIELD

HYDRAULIC BRAKES

FLOATING POWER

HOTCHKISS DRIVE

**FULL-PRESSURE
ENGINE LUBRICATION**

**FULLY-AUTOMATIC
SPARK CONTROL**

DOWN-DRAFT

CARBURETOR

SAFETY ALL

STEEL BODY

RUSTPROOFING

**OIL FILTER STANDARD
EQUIPMENT**

HYPOID REAR AXLE

SAFETY-RIM WHEELS

**CHAIN-DRIVEN
CAMSHAFT**

**OILITE
GASOLINE FILTER**

INDEPENDENT

HAND BRAKE

FOUR-RING PISTONS

**SAFETY SIGNAL
SPEEDOMETER**

ROTARY

DOOR LATCHES

**COUNTERBALANCED
TRUNK LID**

SAFE-GUARD BRAKES

SUPER-CUSHION TIRES

AIRFOAM

SEAT CUSHIONS

CHROME

COMPRESSION

RING

AUTOMATIC CHOKE

Specifications

THE GREAT NEW PLYMOUTH

ENGINE—Six Cylinder "L" Head. Aluminum alloy pistons—97 horsepower at 3600 R.P.M. Bore and stroke $3\frac{1}{4} \times 4\frac{3}{8}$ inches. Piston displacement 217.3 cu. in. Taxable H. P. 25.35.

WHEELBASE—All Special DeLuxe Models (P-18), 118 $\frac{1}{2}$ inches. DeLuxe Models—4-Door Sedan—Club Coupe (P-18), 118 $\frac{1}{2}$ inches. DeLuxe Models—3-Passenger Coupe—2-Door Sedan and Suburban (P-17), 111 inches. Tread: front, 55 inches; rear, 56 inches.

OVER-ALL DIMENSIONS—Over-all width Special DeLuxe and DeLuxe (P-18), 71 $\frac{1}{8}$ inches. DeLuxe (P-17), 71 $\frac{3}{4}$ inches. Station Wagon (P-18), 71 $\frac{1}{8}$ inches. Over-all length Special DeLuxe and DeLuxe (P-18), 191 $\frac{1}{2}$ inches. DeLuxe (P-17), 185 $\frac{5}{8}$ inches (with guards); Station Wagon (P-18), 196 inches; Suburban (P-17) 185 $\frac{1}{2}$ inches.

BRAKES—Safe-Guard four-wheel hydraulic, internal expanding. Twin cylinder type in front—10 inch drums—brake lining contact area 158 sq. in. Parking brake controlled by hand lever, operates independently of all others—one piece lining—33 $\frac{3}{8}$ sq. in. braking area.

LUBRICATION—Full pressure to main, lower connecting rods and camshaft bearings—Floating-type oil intake, Crankcase capacity 5 quarts.

BATTERY—6 Volt, 15 plate, 100 ampere-hour capacity.

PROPELLER SHAFT—Tubular, 2 $\frac{3}{4}$ inch diameter. Two roller bearing universal joints.

TIRES—Super Cushion mounted on steel disc drop center "K" Flange Safety Wheels. Rim width, 4 $\frac{1}{4}$ inches. Special DeLuxe and DeLuxe (P-18), 6.70 x 15. DeLuxe (P-17), 6.40 x 15.

CRANKSHAFT—Four removable precision-type main bearings.

CAMSHAFT—Silent chain driven.

FUEL SYSTEM—17 gallon gasoline tank with Oilite self-cleaning filter in tank. Down-draft carburetor, oil bath air cleaner. Automatic Choke.

TRANSMISSION—Standard three speeds forward and reverse. Gearshift, remote control manual operation on steering column under wheel. Synchro-silent all helical gears with synchronous meshing second and third gears. Lubricant capacity 2 $\frac{3}{4}$ pints.

STEERING—Worm and Roller type. Wheel diameter Special DeLuxe and DeLuxe (P-18), 17 $\frac{1}{2}$ inches. DeLuxe (P-17), 17 inches.

SPRINGS—Front, Amola Coil Steel independently sprung. Rear, Semi-elliptic Amola Steel, 53 $\frac{5}{8}$ inches long and 1 $\frac{3}{4}$ inches wide with metal covers.

SHOCK ABSORBERS—Hydraulic, double-acting, telescopic, 1 inch Piston.

REAR AXLE—Silent Hypoid Semi-floating with Amola steel gears. Gear ratio 3.9 to 1 (P-18), 3.73 to 1 (P-17), and 4.1 to 1 on Station Wagon. Lubricant capacity 3 $\frac{3}{4}$ pints.

CLUTCH—Single plate, dry, ventilated. Total contact area 77.8 sq. in. Facing of molded woven asbestos.

COOLING—Pump actuated circulation. Oilite Bronze bearing front and rear of pump. Full-length water jacket. Four blade, 17-inch fan. Cooling system water capacity is 3 $\frac{3}{4}$ gallons.

While side-wall tires, steel wheel covers, and rear fender scuff guards shown on all models are optional equipment at extra cost.

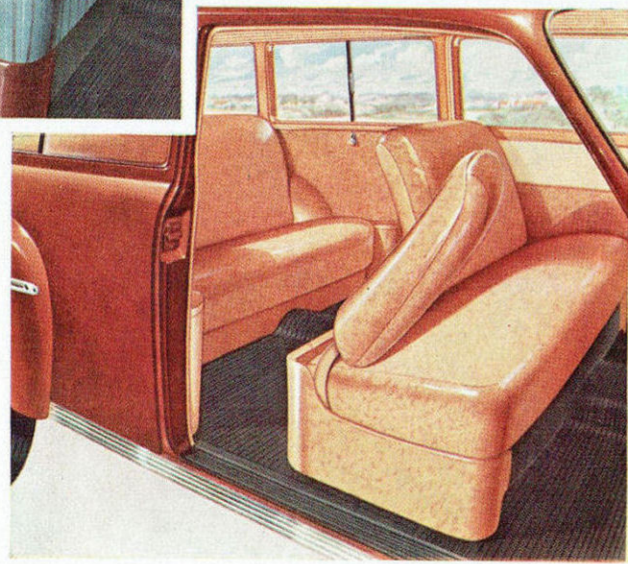
All specifications subject to change without notice.





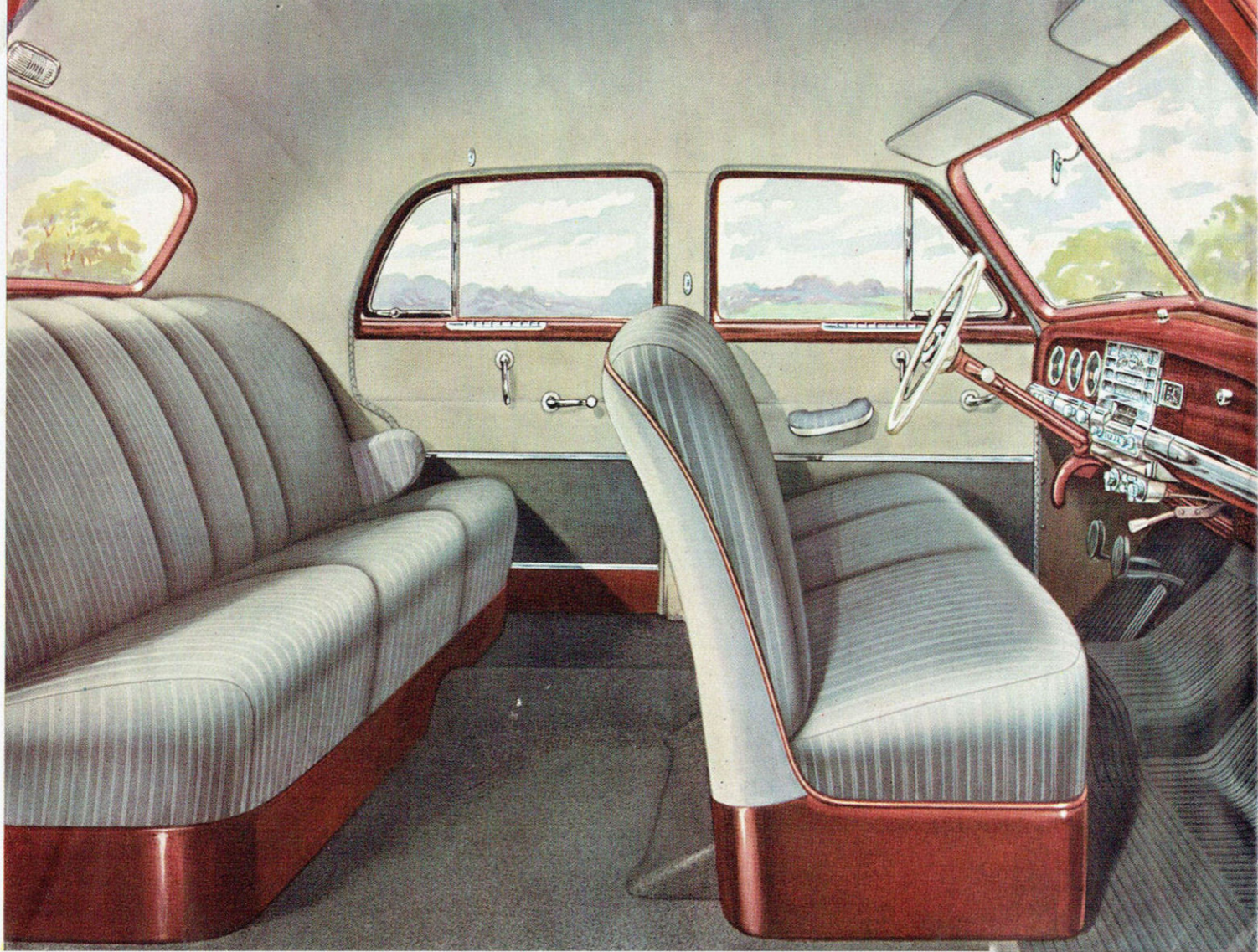
Special De Luxe Club Coupe

Entrance to the smartly styled Club Coupe interior is made through extra wide doors. Front seat swings inward as it tilts forward making for graceful entrance to the rear compartment.



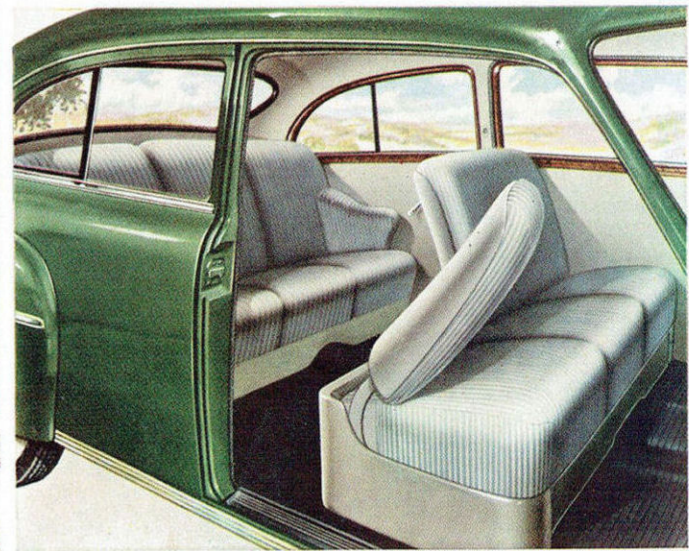
De Luxe Suburban

The amazing new all-metal Suburban rides like a Sedan, looks like a Station Wagon converts to a roomy cargo carrier. Its rich brown washable plastic upholstery is long-lasting. Spacious seating, front and back. Large luggage space behind rear seat. Back opens down for maximum carrying load. Spare tire is stored in back compartment floor, out of the way.



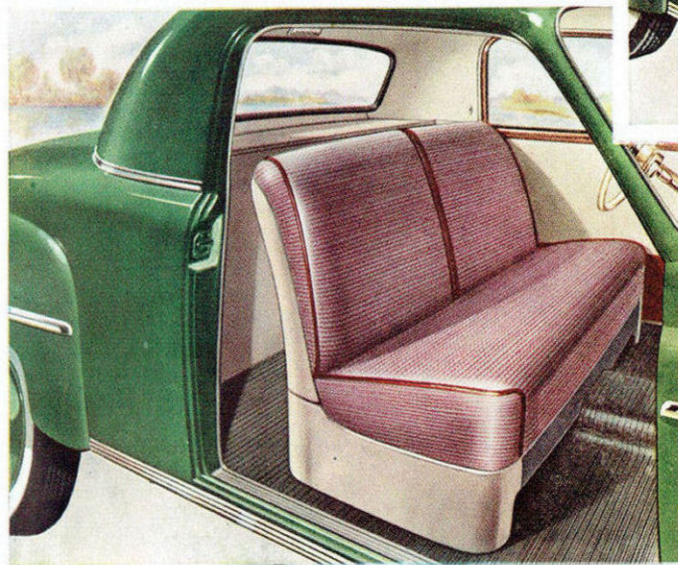
Special De Luxe Four Door Sedan

Roominess keynotes the interior of the Special De Luxe Four Door Sedan. The luxurious upholstery is enriched by the grained mahogany garnish moldings on dash and doors. Leather scuff pads protect the upholstery at vital points.



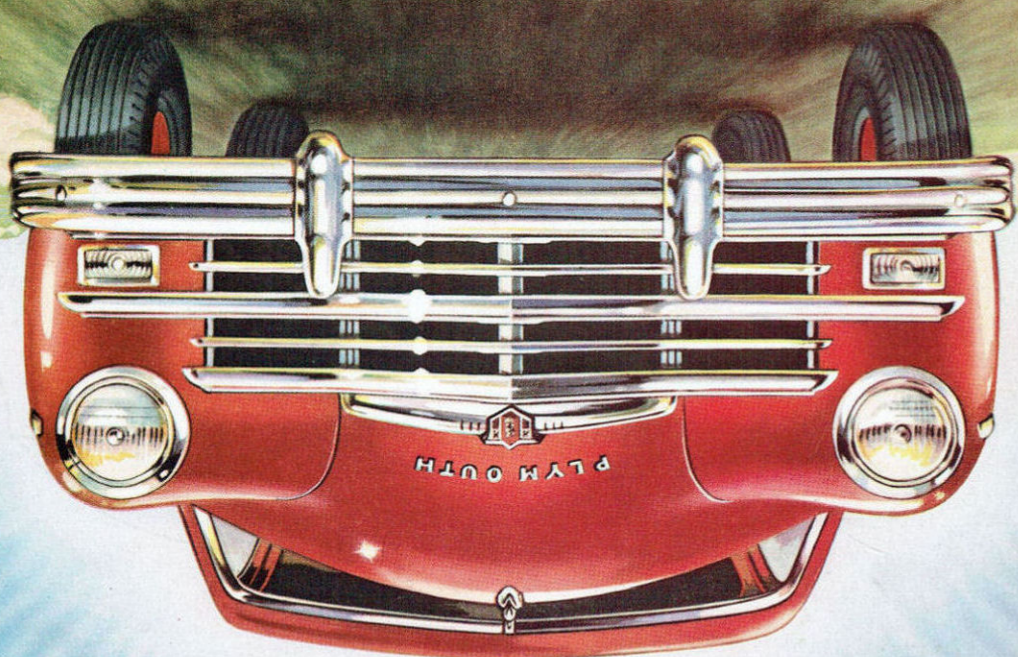
De Luxe Two Door Sedan

Plymouth's beautiful new Two Door Sedan gives you real roominess, good vision, luxurious comfort and distinctive styling. Rich broadcloth graces the chair-height seats.



De Luxe Three Passenger Coupe

The Coupe offers economy and convenience for the small family, businessman, or salesman. Wide seat comfortably holds driver and two passengers. Large storage space behind seat in addition to oversize trunk compartment provides an abundance of luggage space.



PRINTED IN U.S.A.



All specifications subject to change without notice.

White side-wall tires, steel wheel covers, and rear fender scuff guards shown on all models are optional equipment at extra cost.

11-inch fan. Cooling system water capacity is 3 3/4 gallons.

CLITCH—Single plate, dry, ventilated. Total contact area 71.8 sq. in. Facing of molded woven asbestos.

COOLING—Pump actuated circulation. Offite Bronze bearing front and rear of pump. Full-length water jacket. Four blades.

REAR AXLE—Silent Hypoid Semi-floating with Anola steel 1 inch Piston.

SHOCK ABSORBERS—Hydraulic, double-acting, telescopic, inches wide with metal covers.

SPRINGS—Front, Anola Coil Steel independently sprung, 17 inches.

STEERING—Worm and bevel type. Wheel diameter Special Deluxe and Deluxe (P-18), 17 1/2 inches. Deluxe (P-17), 17 inches.

TRANSMISSION—Standard three speeds forward and reverse. Gearshift, remote control manual operation on steering column under wheel. Synchro-stent all helical gears with synchro-stent meshing second and third gears. Lubricant capacity 2 3/4 pints.

FUEL SYSTEM—17 gallon gasoline tank with Offite self-cleaning filter in tank. Down-draft carburetor, oil bath air cleaner. Automatic Choke.

CAMSHAFT—Silent chain driven.

OVER-ALL DIMENSIONS—Overall all with Special Deluxe and Deluxe (P-18), 17 1/2 inches. Deluxe (P-17), 17 inches. Station Wagon (P-18), 17 1/2 inches. Over-all length Special Deluxe and Deluxe (P-18), 191 3/4 inches. Station Wagon (P-18), 183 3/4 inches. Suburban (P-17), 183 3/4 inches.

BRAKES—Safe-Guard four-wheel hydraulic, internal expanding. Suburban (P-17), 183 3/4 inches.

STEERING—Worm and bevel type. Wheel diameter Special Deluxe and Deluxe (P-18), 17 1/2 inches. Deluxe (P-17), 17 inches.

TRANSMISSION—Standard three speeds forward and reverse. Gearshift, remote control manual operation on steering column under wheel. Synchro-stent all helical gears with synchro-stent meshing second and third gears. Lubricant capacity 2 3/4 pints.

FUEL SYSTEM—17 gallon gasoline tank with Offite self-cleaning filter in tank. Down-draft carburetor, oil bath air cleaner. Automatic Choke.

CAMSHAFT—Silent chain driven.

OVER-ALL DIMENSIONS—Overall all with Special Deluxe and Deluxe (P-18), 17 1/2 inches. Deluxe (P-17), 17 inches. Station Wagon (P-18), 17 1/2 inches. Over-all length Special Deluxe and Deluxe (P-18), 191 3/4 inches. Station Wagon (P-18), 183 3/4 inches. Suburban (P-17), 183 3/4 inches.

BRAKES—Safe-Guard four-wheel hydraulic, internal expanding. Suburban (P-17), 183 3/4 inches.

STEERING—Worm and bevel type. Wheel diameter Special Deluxe and Deluxe (P-18), 17 1/2 inches. Deluxe (P-17), 17 inches.

TRANSMISSION—Standard three speeds forward and reverse. Gearshift, remote control manual operation on steering column under wheel. Synchro-stent all helical gears with synchro-stent meshing second and third gears. Lubricant capacity 2 3/4 pints.

FUEL SYSTEM—17 gallon gasoline tank with Offite self-cleaning filter in tank. Down-draft carburetor, oil bath air cleaner. Automatic Choke.

CAMSHAFT—Silent chain driven.

OVER-ALL DIMENSIONS—Overall all with Special Deluxe and Deluxe (P-18), 17 1/2 inches. Deluxe (P-17), 17 inches. Station Wagon (P-18), 17 1/2 inches. Over-all length Special Deluxe and Deluxe (P-18), 191 3/4 inches. Station Wagon (P-18), 183 3/4 inches. Suburban (P-17), 183 3/4 inches.

BRAKES—Safe-Guard four-wheel hydraulic, internal expanding. Suburban (P-17), 183 3/4 inches.

STEERING—Worm and bevel type. Wheel diameter Special Deluxe and Deluxe (P-18), 17 1/2 inches. Deluxe (P-17), 17 inches.

TRANSMISSION—Standard three speeds forward and reverse. Gearshift, remote control manual operation on steering column under wheel. Synchro-stent all helical gears with synchro-stent meshing second and third gears. Lubricant capacity 2 3/4 pints.

FUEL SYSTEM—17 gallon gasoline tank with Offite self-cleaning filter in tank. Down-draft carburetor, oil bath air cleaner. Automatic Choke.

CAMSHAFT—Silent chain driven.

OVER-ALL DIMENSIONS—Overall all with Special Deluxe and Deluxe (P-18), 17 1/2 inches. Deluxe (P-17), 17 inches. Station Wagon (P-18), 17 1/2 inches. Over-all length Special Deluxe and Deluxe (P-18), 191 3/4 inches. Station Wagon (P-18), 183 3/4 inches. Suburban (P-17), 183 3/4 inches.

BRAKES—Safe-Guard four-wheel hydraulic, internal expanding. Suburban (P-17), 183 3/4 inches.

STEERING—Worm and bevel type. Wheel diameter Special Deluxe and Deluxe (P-18), 17 1/2 inches. Deluxe (P-17), 17 inches.

TRANSMISSION—Standard three speeds forward and reverse. Gearshift, remote control manual operation on steering column under wheel. Synchro-stent all helical gears with synchro-stent meshing second and third gears. Lubricant capacity 2 3/4 pints.

FUEL SYSTEM—17 gallon gasoline tank with Offite self-cleaning filter in tank. Down-draft carburetor, oil bath air cleaner. Automatic Choke.

CAMSHAFT—Silent chain driven.

OVER-ALL DIMENSIONS—Overall all with Special Deluxe and Deluxe (P-18), 17 1/2 inches. Deluxe (P-17), 17 inches. Station Wagon (P-18), 17 1/2 inches. Over-all length Special Deluxe and Deluxe (P-18), 191 3/4 inches. Station Wagon (P-18), 183 3/4 inches. Suburban (P-17), 183 3/4 inches.

BRAKES—Safe-Guard four-wheel hydraulic, internal expanding. Suburban (P-17), 183 3/4 inches.

STEERING—Worm and bevel type. Wheel diameter Special Deluxe and Deluxe (P-18), 17 1/2 inches. Deluxe (P-17), 17 inches.

TRANSMISSION—Standard three speeds forward and reverse. Gearshift, remote control manual operation on steering column under wheel. Synchro-stent all helical gears with synchro-stent meshing second and third gears. Lubricant capacity 2 3/4 pints.

FUEL SYSTEM—17 gallon gasoline tank with Offite self-cleaning filter in tank. Down-draft carburetor, oil bath air cleaner. Automatic Choke.

CAMSHAFT—Silent chain driven.

OVER-ALL DIMENSIONS—Overall all with Special Deluxe and Deluxe (P-18), 17 1/2 inches. Deluxe (P-17), 17 inches. Station Wagon (P-18), 17 1/2 inches. Over-all length Special Deluxe and Deluxe (P-18), 191 3/4 inches. Station Wagon (P-18), 183 3/4 inches. Suburban (P-17), 183 3/4 inches.

BRAKES—Safe-Guard four-wheel hydraulic, internal expanding. Suburban (P-17), 183 3/4 inches.

STEERING—Worm and bevel type. Wheel diameter Special Deluxe and Deluxe (P-18), 17 1/2 inches. Deluxe (P-17), 17 inches.

TRANSMISSION—Standard three speeds forward and reverse. Gearshift, remote control manual operation on steering column under wheel. Synchro-stent all helical gears with synchro-stent meshing second and third gears. Lubricant capacity 2 3/4 pints.

FUEL SYSTEM—17 gallon gasoline tank with Offite self-cleaning filter in tank. Down-draft carburetor, oil bath air cleaner. Automatic Choke.

CAMSHAFT—Silent chain driven.

CRANKSHAFT—Four removable piston-type main bearings. 6.10 x 13.

TIRES—Super Cushion mounted on steel disc drop center "K" Flange Safety Wheels. Rim width, 4 1/2 inches. Special Deluxe and Deluxe (P-18), 6.70 x 13. Deluxe (P-17), 6.40 x 13.

PROPELLER SHAFT—Tubular, 2 3/4 inch diameter. Two roller bearing universal joints.

BATTERY—6 Volt, 15 plate, 100 ampere-hour capacity. Floating-type oil intake, Crank-rods and connecting rods capacity 3 quarts.

LEVER ACTION—Full pressure to main, lower connecting rods and connecting rods capacity 3 quarts.

CLITCH—Single plate, dry, ventilated. Total contact area 71.8 sq. in. Facing of molded woven asbestos.

COOLING—Pump actuated circulation. Offite Bronze bearing front and rear of pump. Full-length water jacket. Four blades.

REAR AXLE—Silent Hypoid Semi-floating with Anola steel 1 inch Piston.

SHOCK ABSORBERS—Hydraulic, double-acting, telescopic, inches wide with metal covers.

SPRINGS—Front, Anola Coil Steel independently sprung, 17 inches.

STEERING—Worm and bevel type. Wheel diameter Special Deluxe and Deluxe (P-18), 17 1/2 inches. Deluxe (P-17), 17 inches.

TRANSMISSION—Standard three speeds forward and reverse. Gearshift, remote control manual operation on steering column under wheel. Synchro-stent all helical gears with synchro-stent meshing second and third gears. Lubricant capacity 2 3/4 pints.

FUEL SYSTEM—17 gallon gasoline tank with Offite self-cleaning filter in tank. Down-draft carburetor, oil bath air cleaner. Automatic Choke.

CAMSHAFT—Silent chain driven.

OVER-ALL DIMENSIONS—Overall all with Special Deluxe and Deluxe (P-18), 17 1/2 inches. Deluxe (P-17), 17 inches. Station Wagon (P-18), 17 1/2 inches. Over-all length Special Deluxe and Deluxe (P-18), 191 3/4 inches. Station Wagon (P-18), 183 3/4 inches. Suburban (P-17), 183 3/4 inches.

BRAKES—Safe-Guard four-wheel hydraulic, internal expanding. Suburban (P-17), 183 3/4 inches.

STEERING—Worm and bevel type. Wheel diameter Special Deluxe and Deluxe (P-18), 17 1/2 inches. Deluxe (P-17), 17 inches.

TRANSMISSION—Standard three speeds forward and reverse. Gearshift, remote control manual operation on steering column under wheel. Synchro-stent all helical gears with synchro-stent meshing second and third gears. Lubricant capacity 2 3/4 pints.

FUEL SYSTEM—17 gallon gasoline tank with Offite self-cleaning filter in tank. Down-draft carburetor, oil bath air cleaner. Automatic Choke.

CAMSHAFT—Silent chain driven.

OVER-ALL DIMENSIONS—Overall all with Special Deluxe and Deluxe (P-18), 17 1/2 inches. Deluxe (P-17), 17 inches. Station Wagon (P-18), 17 1/2 inches. Over-all length Special Deluxe and Deluxe (P-18), 191 3/4 inches. Station Wagon (P-18), 183 3/4 inches. Suburban (P-17), 183 3/4 inches.

BRAKES—Safe-Guard four-wheel hydraulic, internal expanding. Suburban (P-17), 183 3/4 inches.

STEERING—Worm and bevel type. Wheel diameter Special Deluxe and Deluxe (P-18), 17 1/2 inches. Deluxe (P-17), 17 inches.

TRANSMISSION—Standard three speeds forward and reverse. Gearshift, remote control manual operation on steering column under wheel. Synchro-stent all helical gears with synchro-stent meshing second and third gears. Lubricant capacity 2 3/4 pints.

FUEL SYSTEM—17 gallon gasoline tank with Offite self-cleaning filter in tank. Down-draft carburetor, oil bath air cleaner. Automatic Choke.

CAMSHAFT—Silent chain driven.

OVER-ALL DIMENSIONS—Overall all with Special Deluxe and Deluxe (P-18), 17 1/2 inches. Deluxe (P-17), 17 inches. Station Wagon (P-18), 17 1/2 inches. Over-all length Special Deluxe and Deluxe (P-18), 191 3/4 inches. Station Wagon (P-18), 183 3/4 inches. Suburban (P-17), 183 3/4 inches.

BRAKES—Safe-Guard four-wheel hydraulic, internal expanding. Suburban (P-17), 183 3/4 inches.

STEERING—Worm and bevel type. Wheel diameter Special Deluxe and Deluxe (P-18), 17 1/2 inches. Deluxe (P-17), 17 inches.

TRANSMISSION—Standard three speeds forward and reverse. Gearshift, remote control manual operation on steering column under wheel. Synchro-stent all helical gears with synchro-stent meshing second and third gears. Lubricant capacity 2 3/4 pints.

FUEL SYSTEM—17 gallon gasoline tank with Offite self-cleaning filter in tank. Down-draft carburetor, oil bath air cleaner. Automatic Choke.

CAMSHAFT—Silent chain driven.

OVER-ALL DIMENSIONS—Overall all with Special Deluxe and Deluxe (P-18), 17 1/2 inches. Deluxe (P-17), 17 inches. Station Wagon (P-18), 17 1/2 inches. Over-all length Special Deluxe and Deluxe (P-18), 191 3/4 inches. Station Wagon (P-18), 183 3/4 inches. Suburban (P-17), 183 3/4 inches.

BRAKES—Safe-Guard four-wheel hydraulic, internal expanding. Suburban (P-17), 183 3/4 inches.

STEERING—Worm and bevel type. Wheel diameter Special Deluxe and Deluxe (P-18), 17 1/2 inches. Deluxe (P-17), 17 inches.

TRANSMISSION—Standard three speeds forward and reverse. Gearshift, remote control manual operation on steering column under wheel. Synchro-stent all helical gears with synchro-stent meshing second and third gears. Lubricant capacity 2 3/4 pints.

FUEL SYSTEM—17 gallon gasoline tank with Offite self-cleaning filter in tank. Down-draft carburetor, oil bath air cleaner. Automatic Choke.

CAMSHAFT—Silent chain driven.

OVER-ALL DIMENSIONS—Overall all with Special Deluxe and Deluxe (P-18), 17 1/2 inches. Deluxe (P-17), 17 inches. Station Wagon (P-18), 17 1/2 inches. Over-all length Special Deluxe and Deluxe (P-18), 191 3/4 inches. Station Wagon (P-18), 183 3/4 inches. Suburban (P-17), 183 3/4 inches.

BRAKES—Safe-Guard four-wheel hydraulic, internal expanding. Suburban (P-17), 183 3/4 inches.

STEERING—Worm and bevel type. Wheel diameter Special Deluxe and Deluxe (P-18), 17 1/2 inches. Deluxe (P-17), 17 inches.

TRANSMISSION—Standard three speeds forward and reverse. Gearshift, remote control manual operation on steering column under wheel. Synchro-stent all helical gears with synchro-stent meshing second and third gears. Lubricant capacity 2 3/4 pints.

FUEL SYSTEM—17 gallon gasoline tank with Offite self-cleaning filter in tank. Down-draft carburetor, oil bath air cleaner. Automatic Choke.

CAMSHAFT—Silent chain driven.

OVER-ALL DIMENSIONS—Overall all with Special Deluxe and Deluxe (P-18), 17 1/2 inches. Deluxe (P-17), 17 inches. Station Wagon (P-18), 17 1/2 inches. Over-all length Special Deluxe and Deluxe (P-18), 191 3/4 inches. Station Wagon (P-18), 183 3/4 inches. Suburban (P-17), 183 3/4 inches.

BRAKES—Safe-Guard four-wheel hydraulic, internal expanding. Suburban (P-17), 183 3/4 inches.

STEERING—Worm and bevel type. Wheel diameter Special Deluxe and Deluxe (P-18), 17 1/2 inches. Deluxe (P-17), 17 inches.

TRANSMISSION—Standard three speeds forward and reverse. Gearshift, remote control manual operation on steering column under wheel. Synchro-stent all helical gears with synchro-stent meshing second and third gears. Lubricant capacity 2 3/4 pints.

FUEL SYSTEM—17 gallon gasoline tank with Offite self-cleaning filter in tank. Down-draft carburetor, oil bath air cleaner. Automatic Choke.

AUTOMATIC CHOKE

CHROME COMPRESSION RING

SEAT CUSHIONS

SAFETY BELT

SAFETY SIGNAL

SAFETY SIGNAL

SAFETY SIGNAL

SAFETY SIGNAL

SAFETY SIGNAL

SAFETY SIGNAL

SAFETY SIGNAL

SAFETY SIGNAL

SAFETY SIGNAL

SAFETY SIGNAL

SAFETY SIGNAL

SAFETY SIGNAL

SAFETY SIGNAL

SAFETY SIGNAL

SAFETY SIGNAL

SAFETY SIGNAL

SAFETY SIGNAL

SAFETY SIGNAL

SAFETY SIGNAL

SAFETY SIGNAL

SAFETY SIGNAL

SAFETY SIGNAL

SAFETY SIGNAL

SAFETY SIGNAL

SAFETY SIGNAL

SAFETY SIGNAL

SAFETY SIGNAL

SAFETY SIGNAL

SAFETY SIGNAL

SAFETY SIGNAL

SAFETY SIGNAL

SAFETY SIGNAL

SAFETY SIGNAL

SAFETY SIGNAL

SAFETY SIGNAL

SAFETY SIGNAL

SAFETY SIGNAL

SAFETY SIGNAL

SAFETY SIGNAL

SAFETY SIGNAL

SAFETY SIGNAL

SAFETY SIGNAL

SAFETY SIGNAL

SAFETY SIGNAL

SAFETY SIGNAL

SAFETY SIGNAL

Key-to-reach control lever at left of front seat for proper leg room and driving comfort.

Key-to-reach control lever at left of front seat for proper leg room and driving comfort.

Key-to-reach control lever at left of front seat for proper leg room and driving comfort.

Key-to-reach control lever at left of front seat for proper leg room and driving comfort.

Key-to-reach control lever at left of front seat for proper leg room and driving comfort.

Key-to-reach control lever at left of front seat for proper leg room and driving comfort.

Key-to-reach control lever at left of front seat for proper leg room and driving comfort.

Key-to-reach control lever at left of front seat for proper leg room and driving comfort.

Key-to-reach control lever at left of front seat for proper leg room and driving comfort.

Key-to-reach control lever at left of front seat for proper leg room and driving comfort.

Key-to-reach control lever at left of front seat for proper leg room and driving comfort.

Key-to-reach control lever at left of front seat for proper leg room and driving comfort.

Key-to-reach control lever at left of front seat for proper leg room and driving comfort.

Key-to-reach control lever at left of front seat for proper leg room and driving comfort.

Key-to-reach control lever at left of front seat for proper leg room and driving comfort.

Key-to-reach control lever at left of front seat for proper leg room and driving comfort.

Key-to-reach control lever at left of front seat for proper leg room and driving comfort.

Key-to-reach control lever at left of front seat for proper leg room and driving comfort.

Key-to-reach control lever at left of front seat for proper leg room and driving comfort.

Key-to-reach control lever at left of front seat for proper leg room and driving comfort.

Key-to-reach control lever at left of front seat for proper leg room and driving comfort.

Key-to-reach control lever at left of front seat for proper leg room and driving comfort.

Key-to-reach control lever at left of front seat for proper leg room and driving comfort.

Key-to-reach control lever at left of front seat for proper leg room and driving comfort.

Key-to-reach control lever at left of front seat for proper leg room and driving comfort.

Key-to-reach control lever at left of front seat for proper leg room and driving comfort.

Key-to-reach control lever at left of front seat for proper leg room and driving comfort.

Key-to-reach control lever at left of front seat for proper leg room and driving comfort.

Key-to-reach control lever at left of front seat for proper leg room and driving comfort.

Key-to-reach control lever at left of front seat for proper leg room and driving comfort.

Key-to-reach control lever at left of front seat for proper leg room and driving comfort.

Key-to-reach control lever at left of front seat for proper leg room and driving comfort.

Key-to-reach control lever at left of front seat for proper leg room and driving comfort.

Key-to-reach control lever at left of front seat for proper leg room and driving comfort.

Key-to-reach control lever at left of front seat for proper leg room and driving comfort.

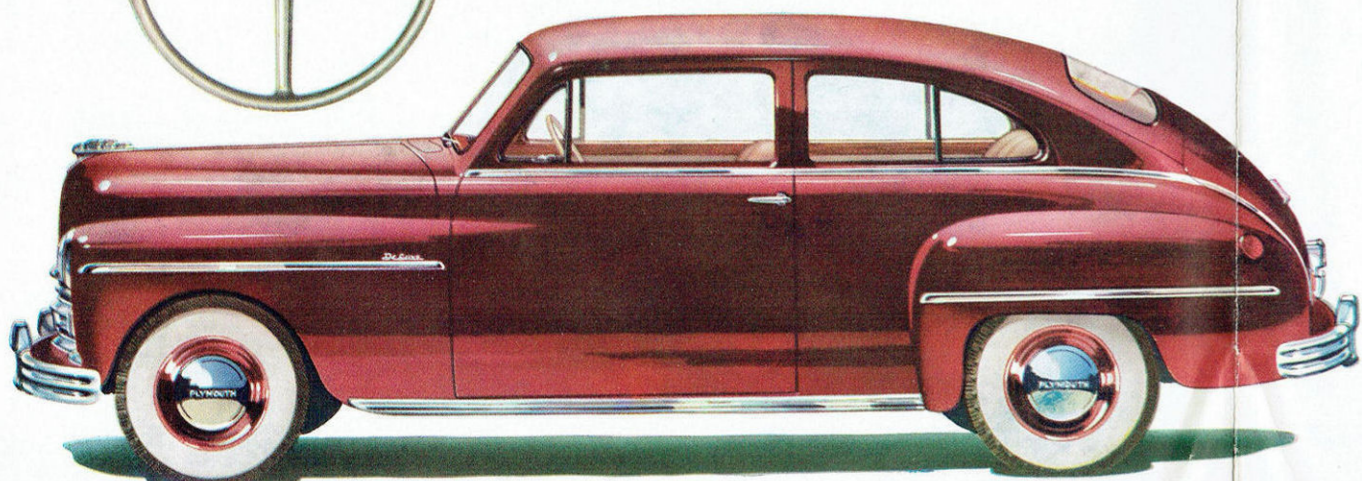
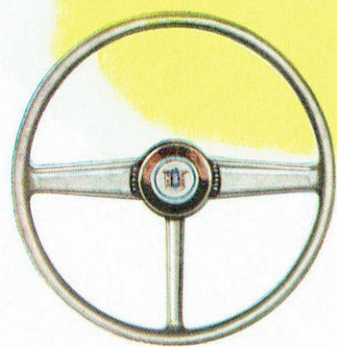
Key-to-reach control lever at left of front seat for proper leg room and driving comfort.

Key-to-reach control lever at left of front seat for proper leg room and driving comfort.

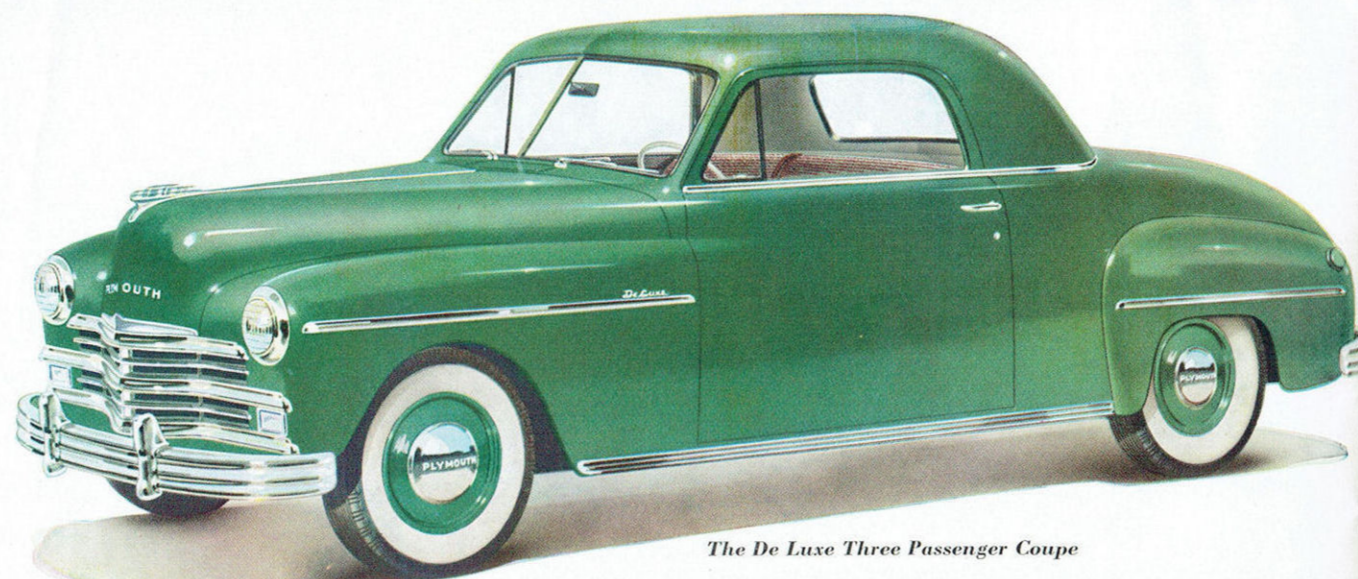
Key-to-reach control lever at left of front seat for proper leg room and driving comfort.

Key-to-reach control lever at left of

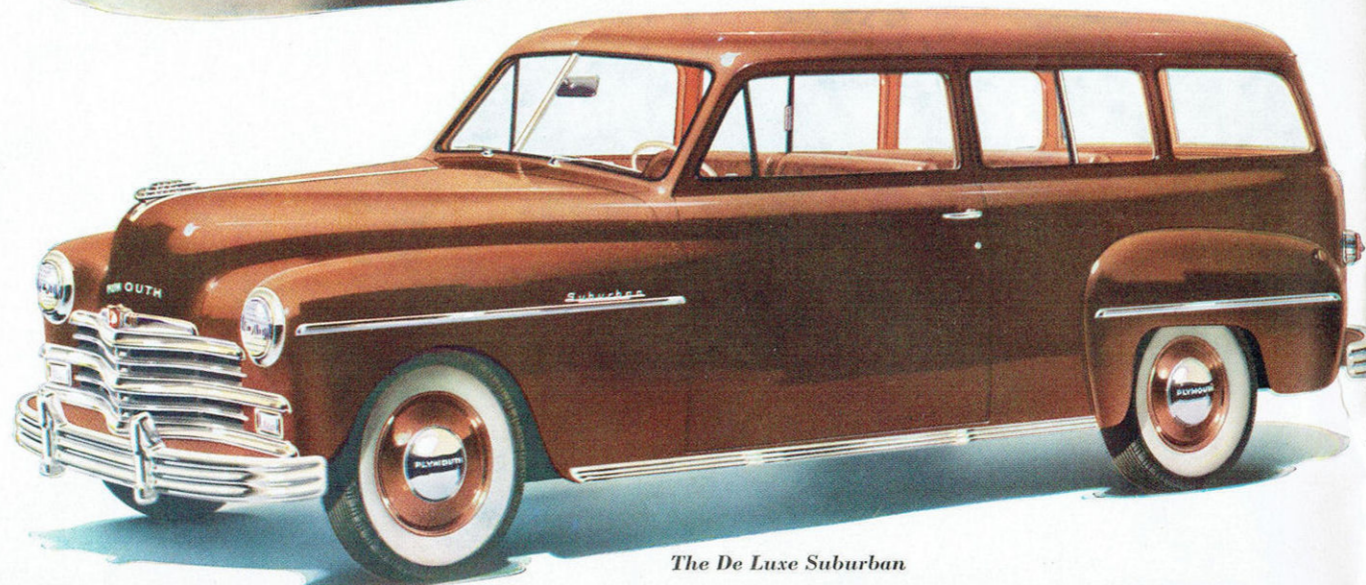
THE *Plymouth* DE LUXE



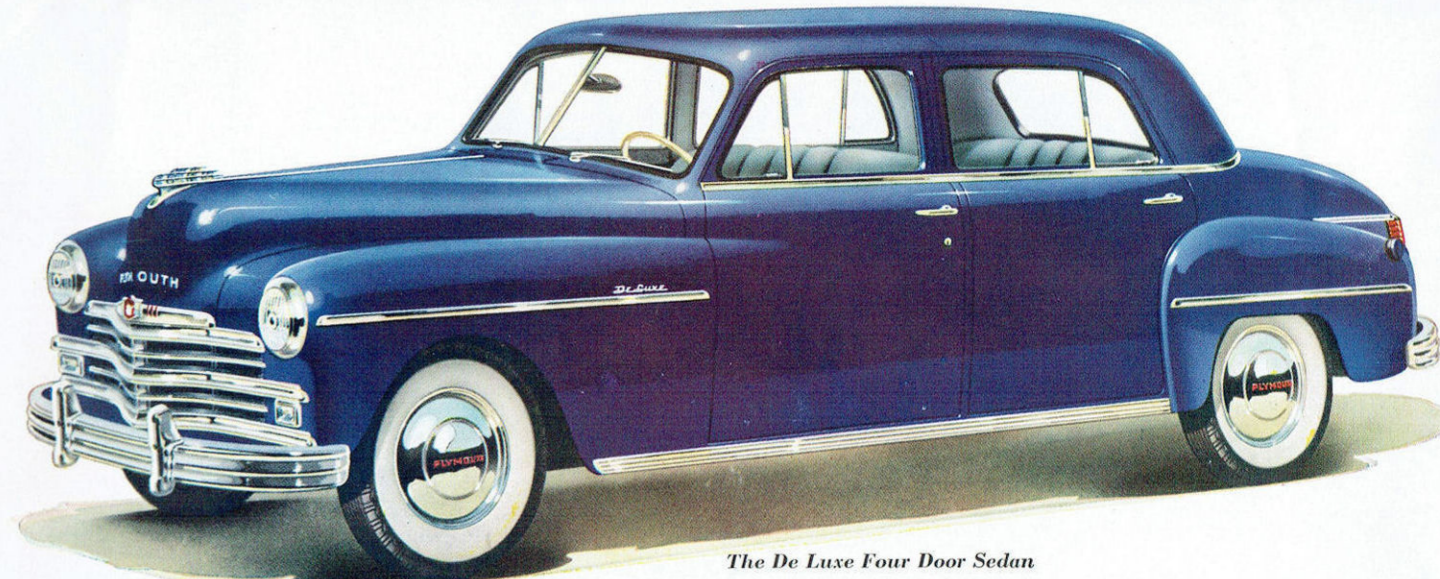
The De Luxe Two Door Sedan



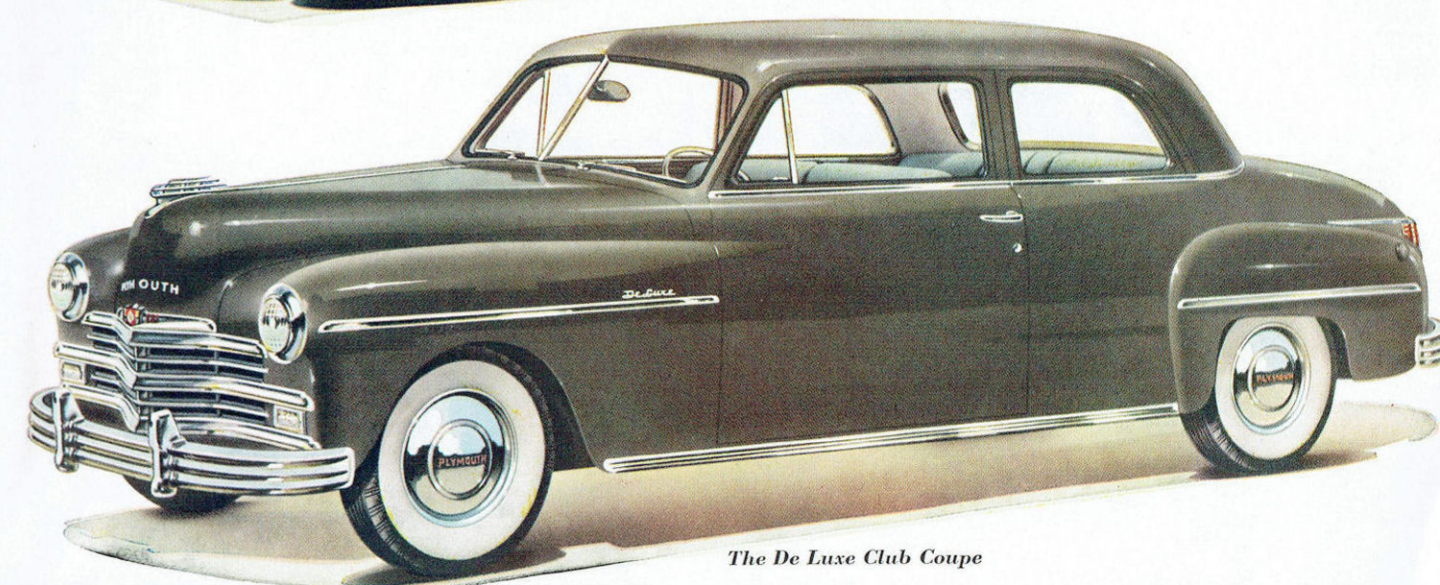
The De Luxe Three Passenger Coupe



The De Luxe Suburban

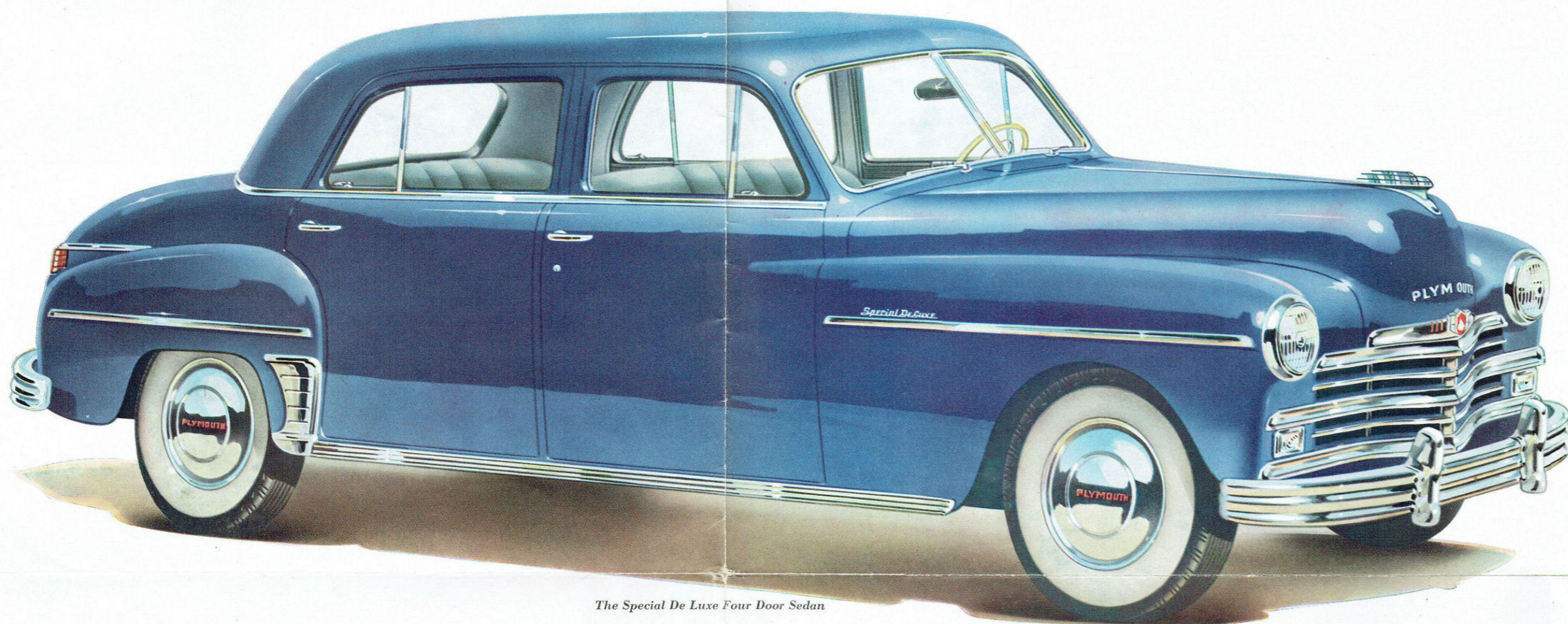


The De Luxe Four Door Sedan



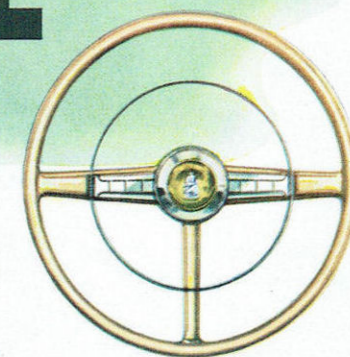
The De Luxe Club Coupe

There's a Lot of Difference in Low-priced Cars...PLYMOUTH makes the Difference



The Special De Luxe Four Door Sedan

THE *Plymouth* SPECIAL DE LUXE



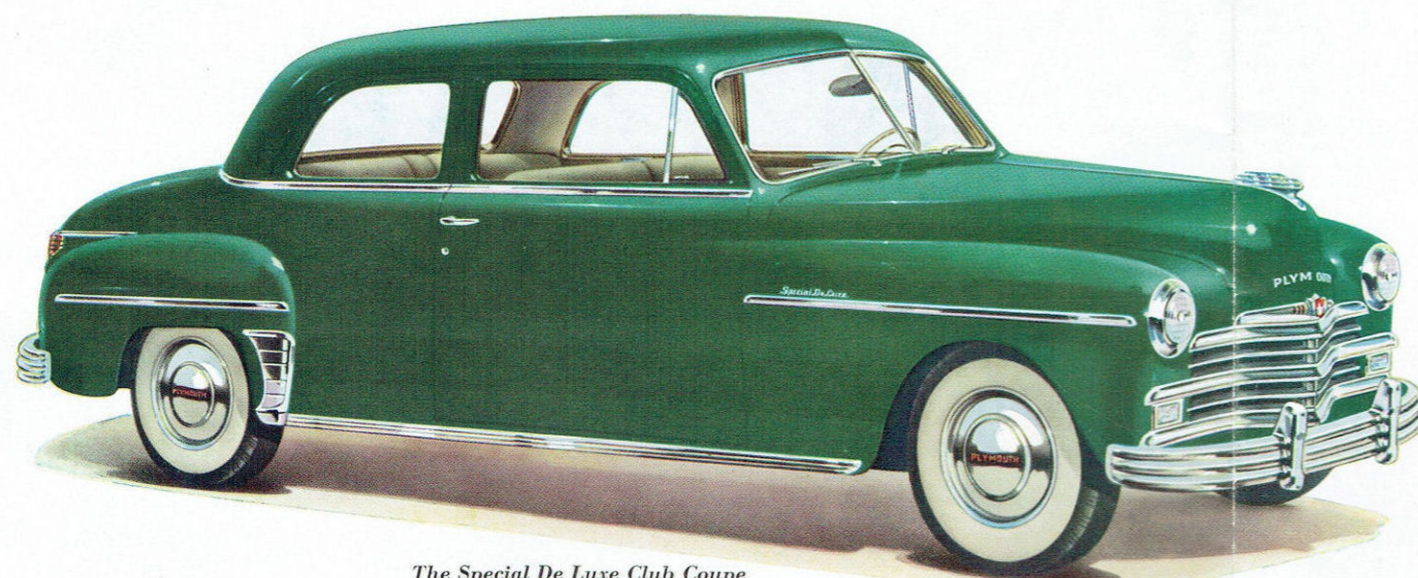
Brilliant new beauty and brilliant new engineering—that's what you get in the sensational new line of Plymouths, plus more economy, amazing performance and greater safety.

Engineering magic greets you right from the start in these great new Plymouths. Simply turn the ignition key and you're ready to travel—no starter button no choke to pull!

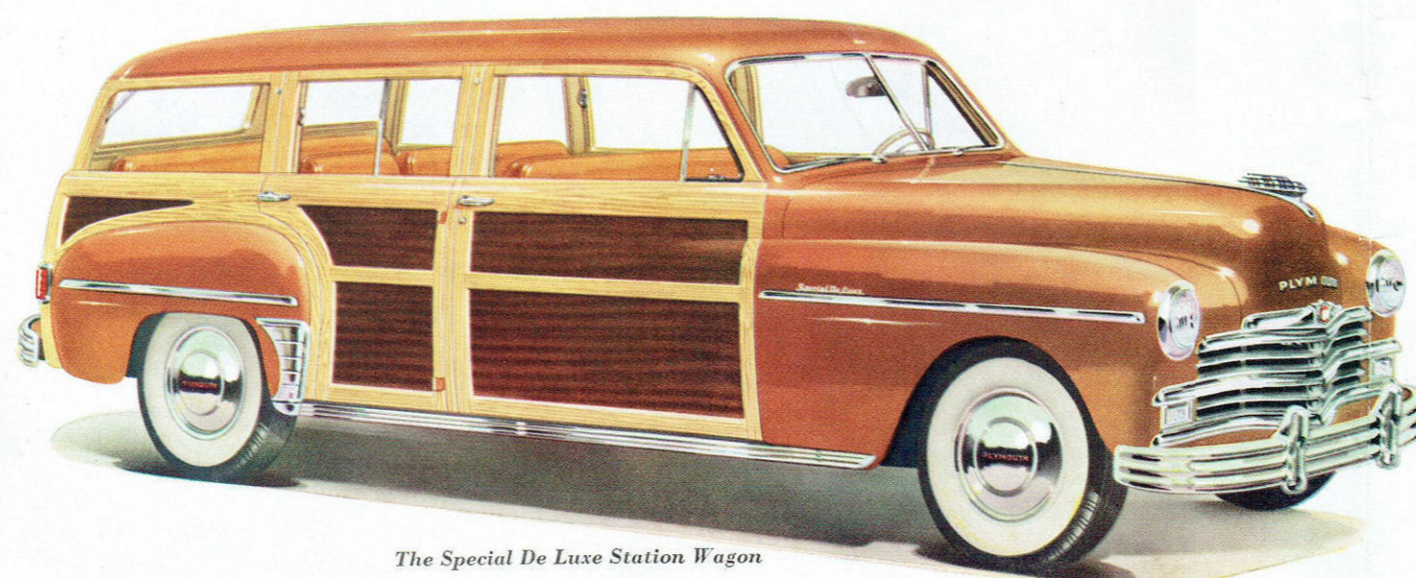
The new Plymouth high compression engine is more powerful. It has many new advances to improve efficiency and long life. Plymouth's common sense styling takes full advantage of the increased

glass area—more comfort has been built into the larger interiors—the body and frame are even stronger. You get sensational ease in handling—in parking—in garaging.

The De Luxe Series offers five body types and the Special De Luxe line has four models. You will find among these diversified new Plymouths the exact type to fit your needs. Each is built to Plymouth's high standards of quality—throughout. Each is engineered to give you—feature for feature—dollar for dollar—the *most automobile value* your money can buy.



The Special De Luxe Club Coupe



The Special De Luxe Station Wagon



The Special De Luxe Convertible Club Coupe