

**Here's the
totally different kind
of car!**



Nothing in the U.S.—nothing in Europe can match the *Superba* BY CHECKER MOTORS



Illustrated: Superba Special Sedan

Superba—the common-sense car America asked for!

Totally different from any American-built or foreign cars, the 1960 Superba stands alone in a new and exciting class by itself. Superba sedans and station wagons are roomy and comfortable in the best American tradition; and they are long-lived and simply styled in the tradition of costly imported cars. Superba's economical 6-cylinder power plant delivers top performance on regular gasoline. And *every* Superba is thoroughly road-tested before it leaves the plant.

Checker Motors proudly presents the most distinctive new line of automobiles introduced in decades.

THE SUPERBA SEDAN. Under 200" bumper to bumper, this compact 8-passenger sedan offers one-third *more* room inside! Fits any garage, turns in a snug circle, parks in tight places.

With Superba you get the comfort of a luxury limousine coupled with the handling ease of a small sports car . . . at a remarkably moderate price.

THE SUPERBA STATION WAGON. Combines sleek good looks with work-horse ruggedness. Thanks to wide-track rear wheels, the cargo-space behind the rear seat is unbroken, wider than in *any* other station wagon. An exclusive optional extra is the power-operated rear seat: at the touch of a dashboard button, the rear seat folds down completely or rises to the upright position.

THE SAFER, LONGER-LIFE SUPERBA. You get unbeatable ruggedness, unparalleled safety built into your Superba car. Basically, it has the chassis that has been proven to stand up through 150,000 miles of the most punishing taxicab service.



DOORS ARE HIGHER AND WIDER—no squatting to get in, no squirming to get out, no need for seats that swivel.



AUXILIARY SEATS, optional at extra cost, allow eight to ride in luxurious comfort. No footwells, no hump.

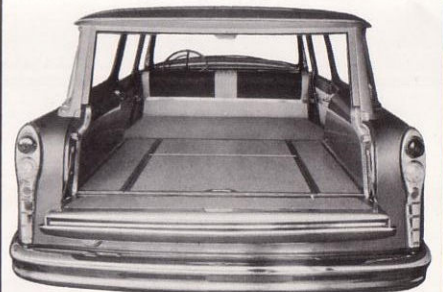
PRICES
START AT **\$2542⁴²**

F.O.B. KALAMAZOO INCLUDING FEDERAL TAX

- **LONGER WHEELBASE.** A full 120" . . . longer than two out of three new cars on the road.
- **SHORTER OVERALL LENGTH.** 199½", so you shed 8" to 18".
- **SURE-STOP BRAKES.** Brake lining area is 193.5 sq. in., assuring safe, sure stops.
- **STURDIER FRAME.** Heavy-duty, double channel X-brace frame has 3 tubular and 2 channel cross members.
- **BETTER REAR SUSPENSION.** Cloud-soft ride assured with double-acting shock absorbers and heavy-duty, semi-elliptical, 5-leaf springs, 2" wide by 55" long.
- **SMALL TURNING CIRCLE.** New, improved worm and gear design permits effortless steering, easy maneuverability.
- **ECONOMICAL 6-CYLINDER ENGINE.** Operates on regular gasoline.
- **OPTIONAL EQUIPMENT** (available at extra cost): Automatic Transmission . . . Overdrive Transmission . . . Power Brakes . . . Power Steering . . . Powered Driver's Seat . . . Radio . . . Heater and Defroster . . . Air-Conditioning . . . Windshield Washer . . . Auxiliary Seats . . . and other equipment also available.

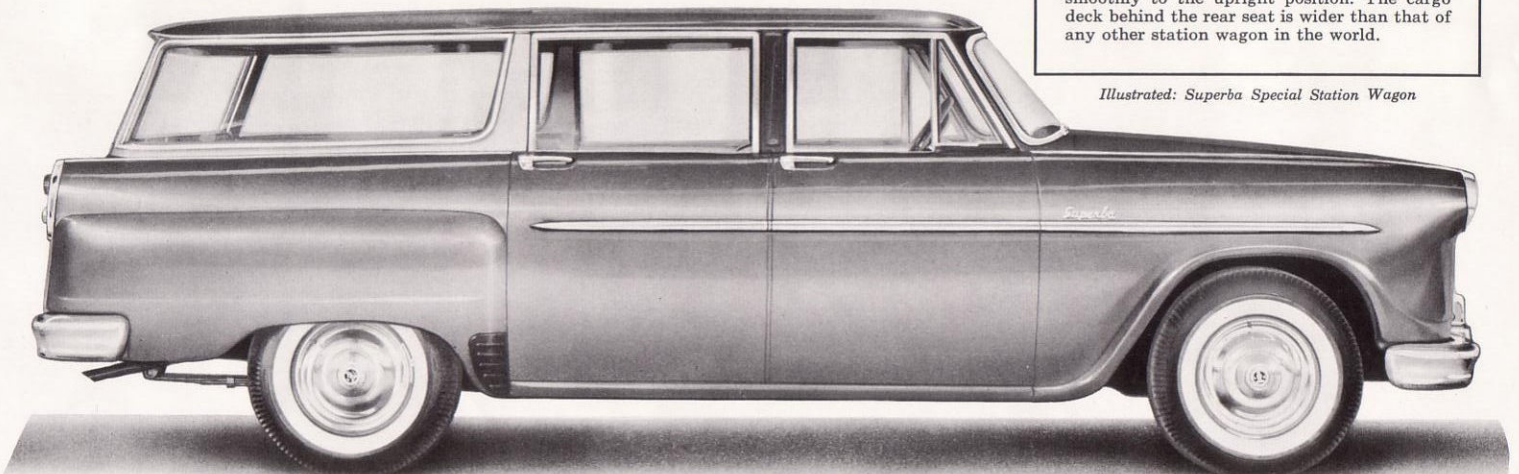
EXCLUSIVE! POWER-OPERATED FOLDING REAR SEAT

OPTIONAL AT EXTRA COST



With just one touch of the convenient dashboard lever, the rear seat folds down completely. Another touch and it rises quietly, smoothly to the upright position. The cargo deck behind the rear seat is wider than that of any other station wagon in the world.

Illustrated: Superba Special Station Wagon



CHECKER MOTORS CORPORATION • KALAMAZOO, MICHIGAN

THE NEW

Superba

BY

CHECKER MOTORS