

1976 Dodge **MONACO**

MONACO

ROYAL MONACO

ROYAL MONACO BROUGHAM



Royal Monaco Brougham

The most magnificent Monaco, capable of matching most any full-sized luxury car around. Its class tells in a striking grille and stand-up hood ornament; in a new canopy vinyl roof and formal opera windows, standard on the two-door pillared hardtop; in deep-carpeted interiors and 50/50 bench seats with fold-down centre armrests and individually adjustable seats. Magnificent. The Royal Monaco Brougham.



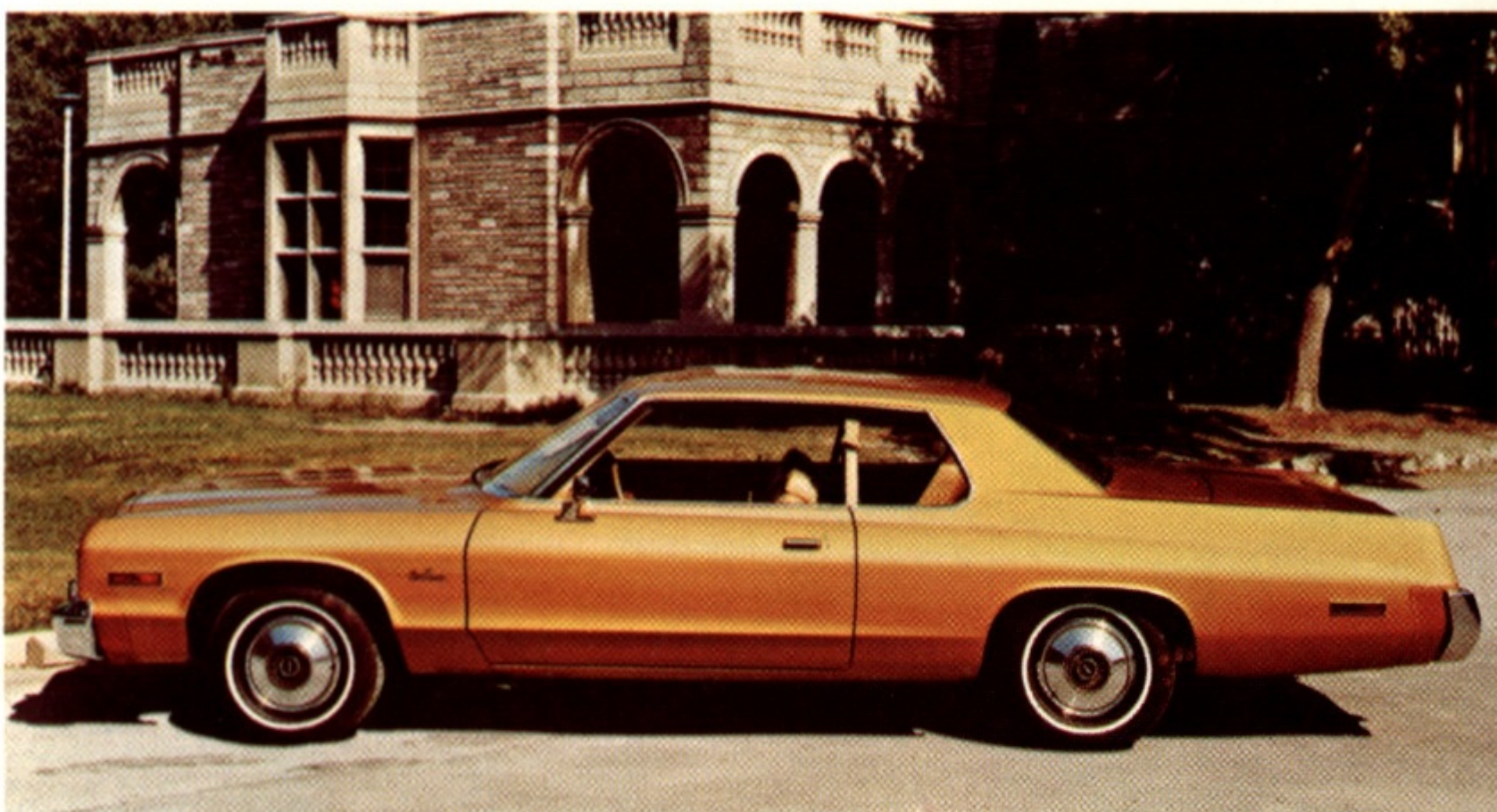
Royal Monaco

This full-sized "gem" from Dodge has its own touches. From its elegant exterior styling to foam-padded seats and thick carpeting inside, Monaco is indeed "Royal". A cloth and vinyl low-back bench seat with centre armrest and adjustable head restraints are standard. So are steel-belted radial tires, power steering, power front disc brakes and automatic transmission. Standard, too: Dodge dependability.



Monaco

The lowest priced Monaco, but still very much a class car. Like the others, Monaco features power steering, power front disc brakes, automatic transmission and 318-V8 engine, all standard. A new sound reduction and quieting package is available (standard on Brougham). If full-size is the only way you care to go, Monaco offers you an excellent, economical way to go Dodge.



Monaco Wagons

Three big versions: Royal Monaco Brougham two-seat wagon, Royal Monaco two- and three-seat wagons and a Monaco two-seat wagon. All are big on cargo space, 100.8 cubic feet of it. All offer you automatic transmission, power steering and power front disc brakes, all standard. Special inside touches abound. Example: cargo compartment carpeting in the Brougham. All Monaco wagons: big in size, comfort, value.



Dodge Monaco

Standard Features

- ALTERNATOR—60 amp. hour with transistorized voltage regulator
- ANTI-FREEZE—Glycol base, —35°
- *ARMRESTS—Front and rear, padded
- ASH RECEIVERS—Instrument panel and rear armrests
- BATTERY—305 amp. (Monaco)
440 amp. (Royal Monaco Brougham and all Station Wagons)
- *BODY—Unibody construction combines body and frame into one strong solid unit. Seven-stage rustproofing
- *BRAKES—Dual braking system, power-assisted and self-adjusting front and rear
Front—floating caliper disc
Rear—drum type with bonded linings
- *BUMPERS—Hydraulic bumper system. Sustains barrier impacts at speeds up to 5 m.p.h., front and rear
- CARPET—Colour-keyed front and rear passenger compartments. Trunk, black and grey print rubber mat
- CATALYTIC EXHAUST SYSTEM—318 8-cylinder engine
- *COAT HOOKS—Left and right side, of special soft plastic
- COOLANT RESERVE SYSTEM
- *DOORS—Safety action inside door handles. Non-protruding. Keyless locking system. Non-override door locks (except driver's door)
- DOOR CHECKS—2-position on all doors
- EMISSION CONTROLS—Closed crank-case ventilation. Air preheat. Evaporative control and charcoal canister. Automatic vacuum spark advance, exhaust gas recirculation and electric-assist choke
- HEADLINING—Moulded one-piece fibreglass
- HEATER/DEFROSTERS—With upper level ventilation
- IGNITION—Electronic ignition system eliminates breaker points and condenser. Reduces tune-ups and emissions. Provides easier starting
- INSIDE HOOD RELEASE
- *INSTRUMENT PANEL AND CONTROLS—Padded, recessed controls, variable intensity lights, parking brake release, bin-type glove box with integral coin holder, glove box lock, cigar lighter, master cylinder and park brake warning indicator, key-left-in ignition warning buzzer, seat belt warning light for driver only

*Safety features

INSULATION—Special insulation. Seals on hood, doors, dash panel, roof, trunk and floor pan help keep out noise and heat

*LIGHTS—Dual concealed headlights, dual taillights, stoplights and backup lights, side marker lights and reflectors, parking lights, turn signals and 4-way emergency flasher, passenger compartment light, front actuated by front doors

*LOCKS—Anti-theft ignition and deck lid

*MIRRORS—Outside, rear view left. Inside, prismatic day/night (except Monaco), balljoint mounted with energy-absorbing lip around edge of glass, windshield mounted

PAINT—19 colours in durable Acrylustre finish

*SEATS—Bench type with driver and passenger head restraints. Full foam and flame-resistant cloth or vinyl. Energy-absorbing front seat back. Seat-back latches on 2-door models

*SEAT BELTS—Combined lap/shoulder belt system for driver and front outboard passengers. Lap belts for all remaining passengers. Automatic retractors for driver and front passenger and outboard passengers in rear seats. Seat belt reminder light and buzzer for driver

*SIDE IMPACT PROTECTION—Beams in doors

*SUN VISORS—Left and right, padded, swivel type

*STEERING—Power-assisted, 2-spoke wheel with vinyl horn pad. Impact-absorbing wheel and steering column. Steering column lock

SUSPENSION—Torsion-Quiet Ride. Special group of rubber bushings on fore structure, steering mechanism. Torsion bars and rear springs greatly reduce road noise. Front sway bar. Torsion bars front. Leaf springs rear and Oriflow shock absorbers

TRANSMISSION—Automatic 3-speed Torqueflite

*WHEELS—15" safety-rim

*WINDSHIELD—Heavy laminated glass prevents inside shattering

*WINDSHIELD WASHERS—Dual electric

*WINDSHIELD WIPERS—Dual with overlap wipe pattern

WINDOWS—Ventless side windows

Selected Optional Equipment

- AIR CONDITIONING—Front unit with Automatic Temperature Control
 - ALTERNATOR—100 amp. heavy-duty
 - AUTOMATIC REAR HEIGHT CONTROL SYSTEM
 - AUTOMATIC SPEED CONTROL
 - BATTERY—500 amp. extended life
 - BUMPER GUARDS—Front and rear
 - CORNERING LIGHTS—Royal Monaco and Royal Monaco Brougham
 - ELECTRONIC DIGITAL CLOCK
 - ELECTRIC FUEL PACER SYSTEM—Includes fender-mounted turn signals
 - ELECTRIC HEATED REAR WINDOW DEFROSTER—Includes 100 amp. heavy-duty alternator
 - ENGINE BLOCK HEATERS
 - GLASS—Tinted for all windows
 - LOCKING GAS CAP
 - MIRROR—Remote control outside left and right
 - PACKAGES—There are many special package options available, some of which are: Air-Conditioning Package, Light Package and the Light and Heavy-Duty Trailer Towing Package. See your dealer for full details
 - POWER ASSISTS—Deck lid release (except Station Wagons), door locks, seats, windows
 - RADIO—AM pushbutton, AM/FM Monaural pushbutton, AM/FM Multiplex, AM with 8-track stereo tape, AM/FM Multiplex with 8-track stereo tape
 - STATION WAGONS—Auto lock tailgate, cargo compartment dress-up, rear bumper step pads, rear assist handles and roof luggage rack
 - STEERING COLUMN—Tilt and telescopic
 - STEERING WHEEL—Luxury with horn blowing switches
 - SUN ROOF—Power operated (except Station Wagons)
 - SURE-GRIP DIFFERENTIAL—Rear axle
 - SUSPENSION—Heavy-duty with front sway bar and heavy-duty 1" shocks
 - UNDERCOATING AND HOOD SILENCER PAD
 - VENT WINDOWS—Front side manually operated (4-door models)
 - VINYL ROOF—Full. Not available Station Wagons. Canopy (standard Royal Monaco Brougham 2-door Special)
 - WHEELS—Styled road wheels
 - WHEEL COVERS—Deluxe (standard Royal Monaco Brougham)
 - WINDSHIELD WIPERS—3-Speed
- THERE ARE MANY OTHER OPTIONS AVAILABLE. SEE YOUR DEALER FOR FULL DETAILS.

Seat Availability

Model	Standard Seat	Material	Optional Seat	Material
Monaco	Bench	Cloth & Vinyl	(c) Bench	Vinyl
Royal Monaco	Bench with fold down centre armrest	Cloth & Vinyl	Bench with fold down centre armrest	Vinyl
Royal Monaco Brougham	(a) 50/50 split bench with individual front seat armrests	Cloth & Vinyl	(a) 50/50 split bench with individual front seat armrests	Velour Cloth & Vinyl
Monaco Station Wagon	Bench	Vinyl		
Royal Monaco Station Wagon	Bench with fold down centre armrest	Vinyl		
Royal Monaco Brougham Sta. Wag.	(b) 50/50 split bench with individual front seat armrests	Vinyl		

(a) Includes passenger side recliner on Four-Door Sedan
(c) Four-Door Sedan only

(b) Includes passenger side recliner.

Dodge Monaco — Basic Specifications

Model Availability	2-Door Special Hardtop	2-Door Hardtop	4-Door Sedan	Station Wagon	
				2-seat	3-seat
Monaco		X	X	X	
Royal Monaco		X	X	X	X
Royal Monaco Brougham	X		X		X

Exterior Dimensions	4-Door Sedan	2-Door Hardtop	Station Wagon
Wheelbase	122.0"	122.0"	124.0"
Overall length (a)	225.7"	225.7"	229.5"
Overall width	79.8"	79.8"	79.4"
Overall height	54.8"	54.1"	57.6"
Track—front	64.0"	64.0"	64.0"
—rear	63.4"	63.4"	63.4"
Road clearance	5.0"	5.0"	5.6"
Approximate shipping weight, lbs.	4279	4242	4884 (b)

(a) Includes Bumper Guards
(b) Three-Seat Wagon 4944

Interior Dimensions	4-Door Sedan	2-Door Hardtop	Station Wagon
Effective Head Room—front	38.7"	38.0"	38.7"
—rear	37.8"	37.7"	40.5"
Effective Leg Room—front	42.1"	42.1"	42.1"
—rear	36.9"	34.2"	37.3"
Shoulder Room—front	61.5"	61.5"	61.5"
—rear	61.6"	60.8"	61.6"
Hip Room—front	58.6"	58.6"	59.2"
—rear	58.8"	58.3"	59.0"
Entrance Height—front	30.4"	30.0"	30.4"
—rear	30.2"	—	30.4"
Seat Height—front	9.2"	9.2"	9.2"
—rear	11.5"	10.7"	11.5"

Luggage Compartment

Usable Space (cu. ft.)	20.4
Usable Length	61.0"
Usable Width	76.5"
Loading Height	28.5"

Station Wagon — Cargo Compartment

Height—Floor to roof at tailgate opening	26.2"
Length—2nd seat to end of open tailgate	87.2"
—2nd seat to closed tailgate	59.5"
—Front seat to end of open tailgate	127.7"
—Front seat to closed tailgate	97.7"
Width—Floor at tailgate opening	48.5"
—Floor between wheelhousing	48.5"
—At beltline	51.1"
Tailgate loading height	27.3"
Cargo Volume (cu. ft.)	100.8

Engine and Transmission Specifications

Engine Specifications

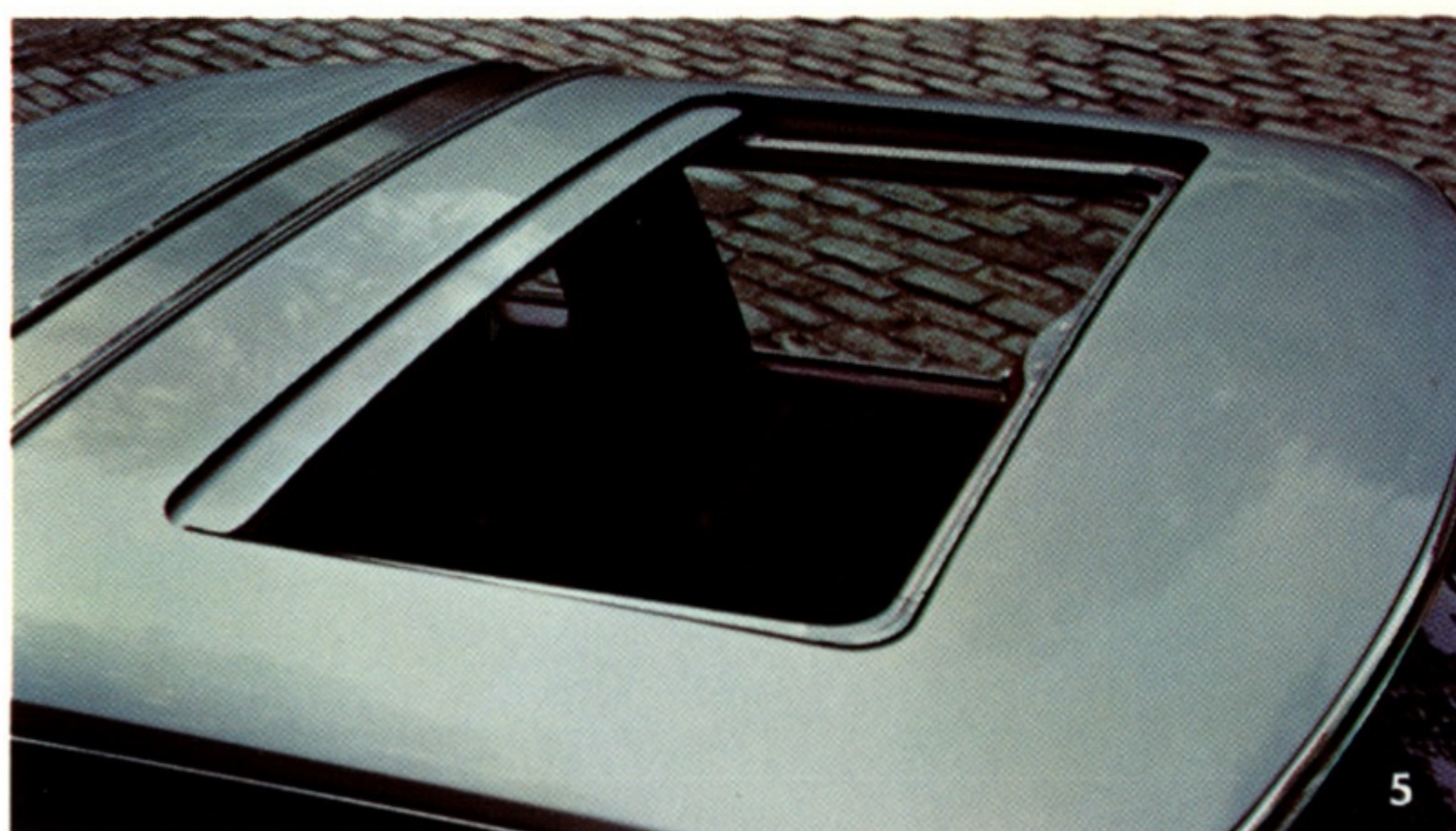
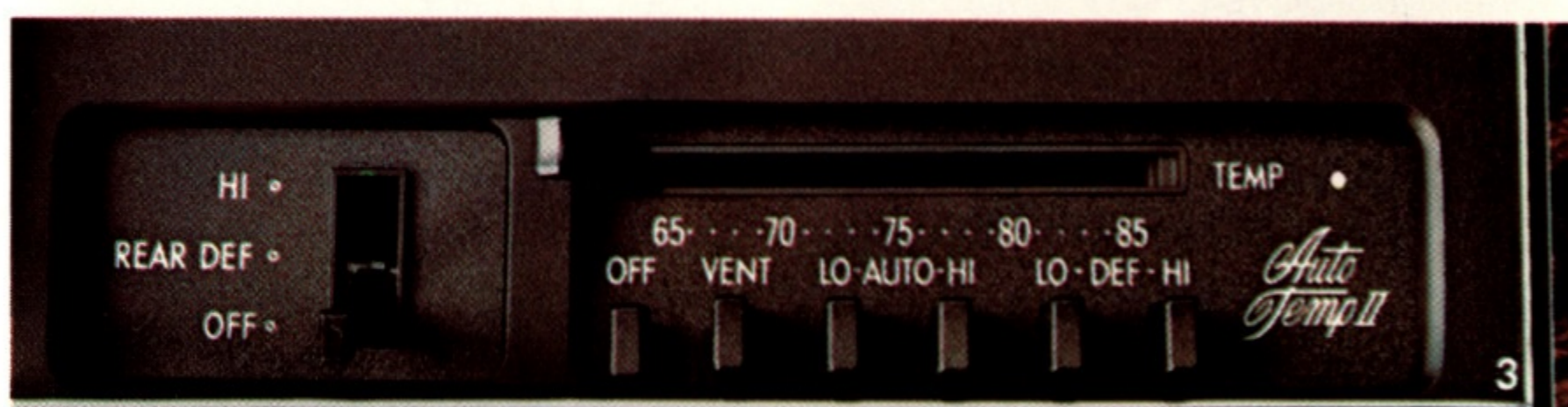
	8-Cylinder			
	318	360	400	440
Displacement (cu. in.)	318	360	400	440
Bore (in.)	3.91	4.00	4.34	4.32
Stroke (in.)	3.31	3.58	3.38	3.75
Installed Net Horsepower @ R.P.M.	145 @ 4000	170 @ 4000	205 @ 4000	205 @ 3600
Installed Net Torque @ R.P.M.	250 @ 1600	280 @ 2400	305 @ 3200	320 @ 3200
Compression Ratio	8.5 to 1	8.4 to 1	8.2 to 1	8.2 to 1
Carburetor	1-2 bbl.	1-2 bbl.	1-4 bbl.	1-4 bbl.
Air Cleaner	Silenced	Silenced	Single Snorkel Low Restriction	Silenced Single Snorkel
Catalytic Exhaust System	Std.	N.A.	N.A.	N.A.
Exhaust	Single	Single	Single	Single
Fuel Required	Unleaded	Leaded or Unleaded	Leaded or Unleaded	Leaded or Unleaded
Engine—Application by Model				
Monaco Sedan and 2-Door Hardtop	Std.	Opt.	Opt.	Opt.
Monaco Station Wagon	N.A.	Std.	Opt.	Opt.
Royal Monaco	N.A.	Std.	Opt.	Opt.
Royal Monaco Brougham	N.A.	Std.	Opt.	Opt.
Transmission Application by Engine				
Torqueflite—3-Speed Automatic	Std.	Std.	Std.	Std.

Std.—Standard Equipment Opt.—Optional Equipment N.A.—Not Available

Monaco Options

The dependability built into every Dodge carries much further than the basic Dodge itself. It encompasses the options that so many people want on their Dodge Monaco. Shown and described briefly here are some of the options you can depend on to add to the comfort and convenience of Monaco.

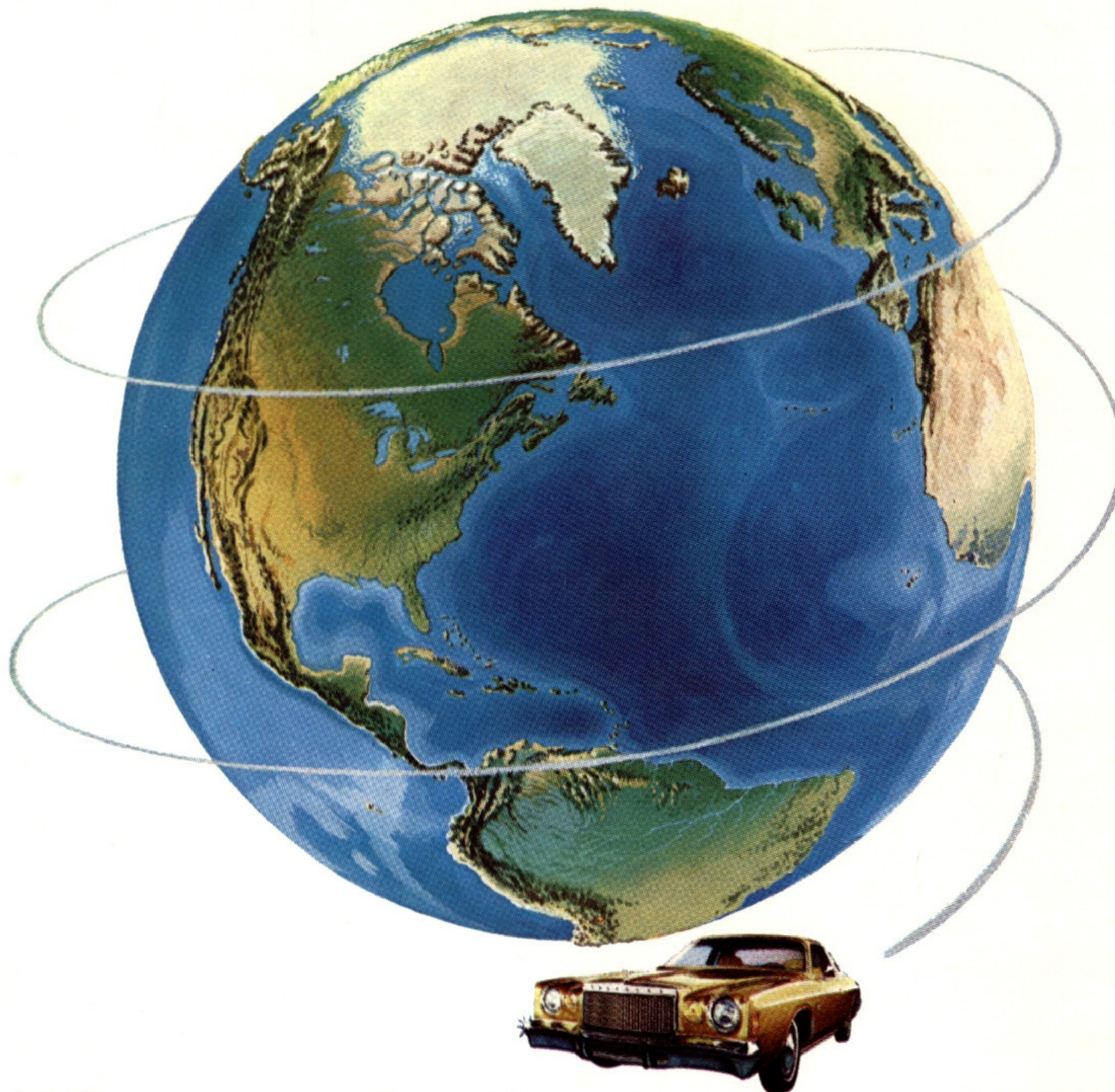
1. **TILT AND TELESCOPIC STEERING WHEEL.** Wheel adjusts to the reach and comfort requirements of any-size driver in the family. Moves out of your way when you get in or out, too.
2. **AUTOMATIC SPEED CONTROL.** Automatically maintains the speed you select until you brake, accelerate or disengage the control. Great for resting the accelerator foot on long trips.
3. **AIR CONDITIONING WITH AUTOMATIC TEMPERATURE CONTROL.** Lets you relax in the cool comfort of the temperature you select and holds it there. A boon for peace and quiet fans and allergy sufferers.
4. **ELECTRIC-HEATED REAR WINDOW DEFROSTER.** Thin electric filaments bonded to the rear window glass clear it of snow, ice or fog in minutes. Keeps rear window clear for unhindered vision.
5. **ELECTRICALLY - OPERATED SUN ROOF.** Gives you the benefits of our hardtop and sedan plus that open convertible feeling. This all-metal sun roof opens to any position, too. (Not available on wagons.)



6. **AM/FM RADIO WITH STEREO TAPE.** Whatever pleases your ear, Dodge has the sound system to match your tastes. This one lets you tune in your favourite station or personal tape.

7. **ELECTRONIC DIGITAL CLOCK.** On time all the time, this car clock keeps its accuracy to plus or minus one minute a month.

TRAILER TOWING PACKAGES. Everything for the trailering enthusiast, whether you haul light (up to 2,000 pounds) or heavy (up to 7,000 pounds). See your dealer about the package that's right for you.



If you circled the world for a year, you couldn't outdrive our warranty.

1 Unlimited mileage warranty for 12 months
Excludes police cars and taxis only.

Worn-out items replaced

2 Includes selected items such as shocks, mufflers, brake linings and disc brake pads. During the first 12 months, if they wear out, they will be replaced without charge for parts or labour.

3 No charge for parts or labour
Any part which proves defective in normal use, will be replaced without charge, regardless of mileage. Even tires are covered by the tire manufacturer.

4 What do you have to do?
You must perform normal maintenance such as changing the oil, filters and replacing wiper blades.

The Chrysler Warranty The first year's on us.

That's our way of saying unlimited mileage for the first year.

All product illustrations and specifications are based on authorized information. Although descriptions are believed correct at publication approval, accuracy cannot be guaranteed. Some of the equipment shown on product illustrations is optional, at extra cost. Chrysler Canada Ltd. reserves the right to make changes from time to time, without notice or obligation, in prices, specifications, standard and optional equipment listed, colours and materials, and to change or discontinue models.

