

UICK

1991





Quality is as elusive as truth. Many claim it, few actually capture it. But nothing else has so much to do with whether an automobile is a lasting pleasure or a memorable disappointment.

Quality is very much a part of Buick's heritage. In fact, research has confirmed that Buick is one of the highest-ranking North American automobiles in the most telling of quality: consumer satisfaction. According to a study of 1990 models done by an independent market research company, Buick is the top domestic nameplate based on problems per car in the first 90 days of ownership\*. Today, Buick is building on that tradition of improving vehicle dependability.

General Motors is one of the world's leaders in automotive safety research. Our commitment to safety centres on an extensive impact testing program at the GM Proving Grounds. 1,200 to 1,400 impact tests are performed annually on specific components like steering columns, restraint systems and side structures – it's the most extensive program of its kind in the industry. All Buicks are designed with a solid internal safety cage that helps keep crushed and buckling vehicle components outside the passenger compartment.

One of the ways we are improving upon vehicle dependability and safety is with premium refinements and features like the ones described on this page. We call it The Buick Touch.

\* J.D. POWER AND ASSOCIATES 1990 NEW CAR INITIAL QUALITY SURVEY.™ BASED ON OWNER-REPORTED PROBLEMS DURING THE FIRST 90 DAYS OF OWNERSHIP.

**CHOOSE YOUR CLIMATE**  
The reliability of major mechanical systems is important to Buick customers, and GM's durable air conditioners are known to be well built. Buick's new dual automatic ComforTemp climate control lets you and your front-seat passenger select individual settings. Once selected, the temperature will remain constant, automatically. It is standard on Park Avenue, and Park Avenue Ultra, and available on Regal.

**QUALITY CARS DESERVE QUALITY SOUND**  
All Buick sound systems are designed to fill your travels with resonant sound and a beautiful listening experience. And for the serious audiophile, there are available upgrades that can provide even more superb sound quality. The Concert Sound II speaker system is rich, pure sound reproduction from dual front extended-range woofer/tweeter units matched by dual rear extended-range speakers. Better still, the Delco/Bose system is configured for the acoustics of the specific Buick it is in. For 1991, Buick's new Park Avenue Sedans feature a speed compensation volume – as the speed of the vehicle increases, the volume increases, slow down and the volume decreases. For more details, check each Buick carline specifications page.

**SMOOTHLY FORCEFUL**  
The combination of the new 3800 V6 with Sequential Tuned Port Fuel Injection and the advanced new electronically-controlled 4-speed automatic transmission with overdrive is potent and civilized. Shifts are almost imperceptible, timed to stay near the engine's torque peak for excellent response. Standard on Park Avenues, Reatta and Riviera. The

3800 V6 engine is also available on Regal. Our original 3800 V6 with Sequential Port Fuel Injection is at the top in engine quality among engines from all makers, foreign or domestic. Standard in LeSabre.

**A SENSE OF CONTROL**  
Buick's anti-lock braking system (ABS) minimizes wheel lockup during extreme braking conditions while maintaining steering control. It monitors wheel rotation and senses impending lockup. Buick's ABS apportions more braking power to the wheel with the best traction and pulses brake pressure independently up to 15 times a second for control on a wide variety of driving surfaces. Standard on Park Avenues, Reatta, Riviera, Roadmaster Estate Wagon and available on Le Sabre and Regal.

**THE THINKING SUSPENSION**  
Buick's advanced DynaRide® suspension senses road conditions and reacts accordingly. Deflected-disc shock absorber technology uses a pyramid of disc valves that vary in diameter and thickness. A minor bump deflects just the first disc for isolation from road imperfections. In more severe conditions, pressure in the shock absorbers bends thicker discs for additional comfort.

**PUTTING RUST TO REST**  
We offer one of the highest levels of exterior galvanized corrosion protection in the world. In order to retain their value, many Buick models have body panels galvanized with zinc on both sides – everywhere but the roof – to prevent chips from becoming rust spots. That's one of the reasons Buick is warranted not to rust through any body panel for 6 years or 160,000 kilometres. Ask your dealer for details.

**STATE-OF-THE-ART SAFETY**  
A driver's side Supplemental Inflatable Restraint system (air bag) is designed to supplement the manual front-seat lap/shoulder belt system in substantial frontal impacts over 23 km/h (14 mph), inflating to help protect the driver. The inflation and deflation of the air bag process occurs in milliseconds. Standard on Park Avenues, Reatta, Riviera and Roadmaster Estate Wagon.  
*It is important to note, this is a*

*supplemental system and can only be effective in conjunction with standard lap/shoulder belts.*

**AN INVITATION**  
This brochure of premium motorcars is meant to interest you and inform you. At the same time, however, may we suggest that there is nothing short of a Buick demonstration drive. Ask your Buick sales consultant to arrange one, in the Buick of your choice.

PARK AVENUE	4
RIVIERA	12
REATA	18
LESABRE	24
REGAL	30
CENTURY	40
SKYLARK	46
ROADMASTER	52
WARRANTY AND ADDITIONAL INFORMATION	58





**PARK AVENUE ULTRA** The most refined 6-passenger sedans Buick has ever offered. An advanced new 3800 V6 engine drives a whisper-smooth, electronically controlled 4-speed automatic transmission. Standard anti-lock brakes add driving security even on slick roads, and the PASS- Key® Personalized Automotive Security System discourages theft. E-Z Kool™ solar control glass cuts glare, helps filter out harmful ultraviolet rays and protects interiors.

PARK AVENUE ULTRA SEDAN SHOWN IN BLACK ▼





Inside, a premium level of Park Avenue conveniences that is nothing short of astonishing. Driver and front-seat passenger can select separate temperature levels as the ComforTemp Climate Control system has dual controls. As you increase driving speed, the volume of the sound system automatically rises allowing you to set the volume control once, and forget about it. Overhead, a console with front-seat reading lamps, storage for garage door opener and optional lamp monitors (std. Ultra). Front sunshades are now dual-mode, – one for side glass with the other for the windshield. Park Avenue Ultra provides the Buick touch with a pair of overhead illuminated rear vanity mirrors that swing down from the headlining. Soft one-piece low-nap cloth headlining is meticulously fitted to the inner roof. Unique Ultra premium equipment includes leather seating surfaces and a memory device that allows programming of 6-way driver's seat and outside mirrors for two different drivers.

PARK AVENUE ULTRA  
INTERIOR WITH TAUPE  
LEATHER SEATING  
SURFACES ►



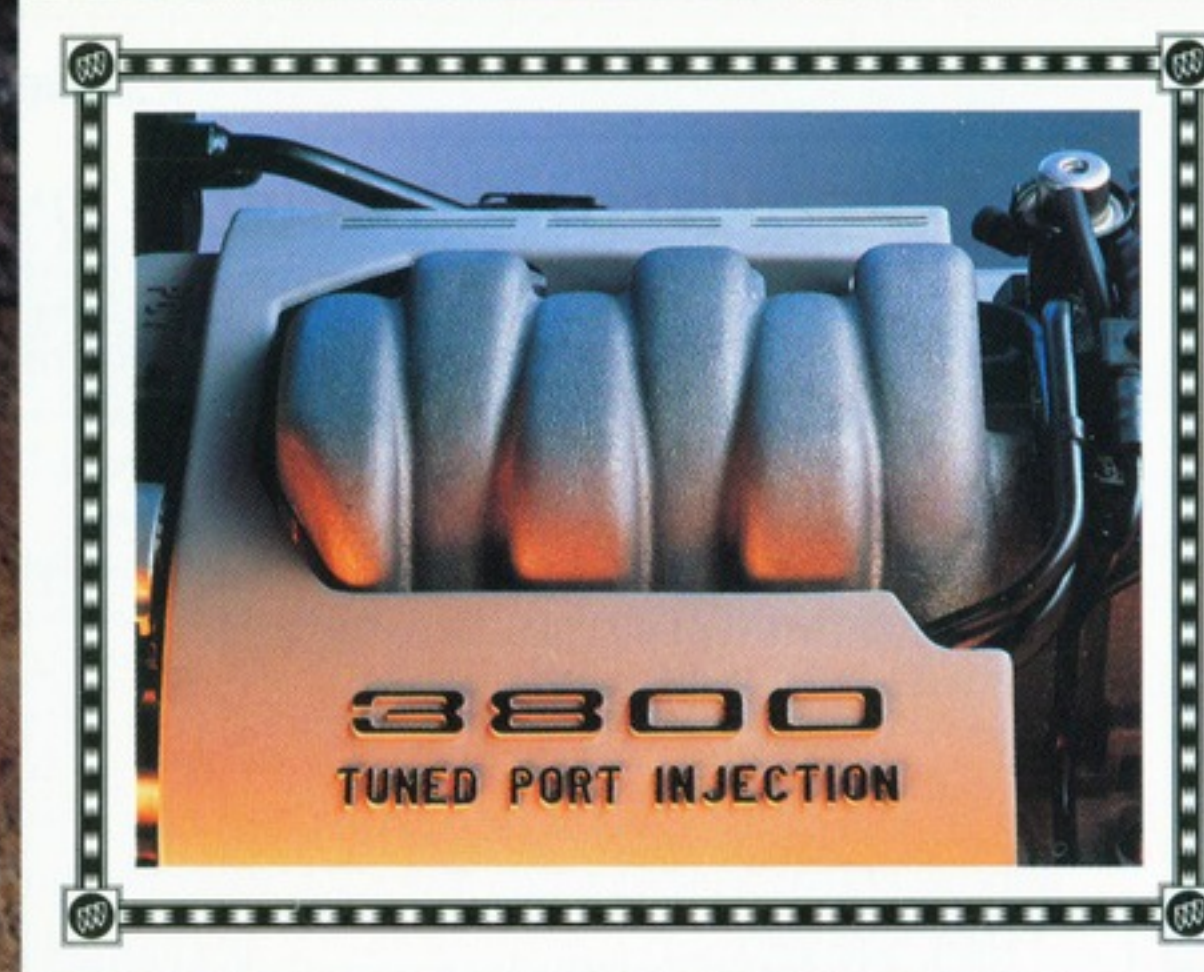
Among Buick's credentials are Park Avenue radios. Optional AM stereo/FM stereo radio shown with graphic equalizer, cassette tape player and new speed compensation volume feature – faster/louder; slower/softer.





**PARK AVENUE** The new Park Avenue is an automobile designed to stir the spirit and reward it at the same time. Buick's 3800 V6 engine's technological advances include an ignition and injection system that provide start times measured in milliseconds. With 170 HP and 220 lbs.-ft. torque it is powerful, yet efficient. You can pass or merge smoothly – and always in a dependable fashion. This new longer sedan with automatic rear level control and a substantial wheelbase has a smooth 4-wheel independent DynaRide® suspension that helps keep every wheel firmly planted on the road – whichever road. "Smooth-as-silk" ride without any sacrifice in handling. Throughout the new Park Avenues, precision and a feeling of solidity are emphasized. The structure itself has been significantly redesigned and strengthened – adding to rigidity, precise fits and quality, the number of separate pieces needed to build this Buick has been reduced by 25%. Enhanced body structure provides outstanding road isolation for a solid ride and the increased length results in 20% more trunk volume.

PARK AVENUE SEDAN SHOWN IN STERLING SILVER METALLIC ▼





## PARK AVENUE standards/options

### BUICKS OFFERED IN THIS SERIES

MODEL	SEDAN
Park Avenue	•
Park Avenue Ultra	•

### STANDARD EQUIPMENT

#### EVERY PARK AVENUE INCLUDES:

##### CHASSIS/MECHANICAL

- Brake/transmission shift interlock
- Power rack-and-pinion steering
- Power front disc/rear drum brakes
- Anti-lock braking system (ABS)
- Engine block heater
- Stainless steel exhaust system
- 4-wheel independent DynaRide® suspension
- Automatic rear level control
- All-season radial whitewall tires
- 15" aluminum wheels

##### EXTERIOR FEATURES

- Two-sided galvanized steel body panels
- Base coat/clear coat paint
- Composite tungsten halogen headlamps
- Automatic daytime running lamps w/Twilight Sentinel
- E-Z KOOL™ tinted glass
- Dual electric outside mirrors
- Illumination package for front door locks and interior
- Automatic power antenna

##### INTERIOR FEATURES

- 55/45 divided bench front seat with 6-way power driver and passenger seat adjusters
- Power reclining passenger seat with manual reclining driver's seat
- Front seat storage armrest
- Driver's side Supplemental Inflatable Restraint system (air bag) with knee bolster
- Full analogue instrumentation: includes tachometer with oil life, low fuel and low oil level indicators
- Visual Reminder Package: includes low coolant, low windshield fluid and door ajar indicators
- PASS-Key® theft-deterrent system
- Comfortilt steering wheel
- Intermittent wipers
- Electronic cruise control
- Dual ComforTemp Climate Control
- AM/FM stereo Delco ETR® radio with seek/scan, digital clock, auto-reverse cassette tape player and 6-speaker Concert Sound II system
- Front side-window defoggers
- Power windows with "express down" driver's feature
- Power door locks

- Convenience group: includes under-hood, trunk, front and rear courtesy lamps
- Retained Accessory Power
- Supplemental front sunshades with slide-out extensions
- Illuminated passenger visor vanity mirror
- Carpeted front and rear floor mats
- Rear seat centre folding armrest
- Electric rear window defogger
- Power fuel filler door release
- Luggage compartment floor mat
- Power trunk release

#### IN ADDITION TO (OR IN LIEU OF) THE STANDARD EQUIPMENT ALREADY LISTED ON PARK AVENUE, EVERY PARK AVENUE ULTRA INCLUDES:

##### CHASSIS/MECHANICAL

- Performance axle ratio
- All-season self-sealing radial whitewall tires
- 15" colour-keyed aluminum wheels

##### EXTERIOR FEATURES

- Cornering lamps
- Special two-tone paint
- Four note horns

##### PARK AVENUE DIMENSIONS: MM (IN.)

Wheelbase	2814 (110.8)	Height	1405 (55.3)
Track, front/rear	1532/1529 (60.3/60.2)	Curb weight: kg (lbs.)	1624 (3,580)†
		Head room, front/rear	986/963 (38.8/37.9)
Tire size	P205/70R-15		
Wheel size (in.)	15 x 6	Leg room, front/rear	1068/1057 (42.0/41.6)
Brake type, front/rear	Disc/Drum		
Fuel tank: litres (gals.)	68 (15.0)	Shoulder room, front/rear	1501/1495 (59.1/58.9)
Length	5211 (205.2)		
Width	1903 (74.9)	Seating capacity	6
		Trunk capacity: litres (cu. ft.)	575 (20.3)

† 1661 (3,662) Park Avenue Ultra.

##### PARK AVENUE POWERTRAIN SPECIFICATIONS

Engine	3800 V6
Displacement	3.8 Litre (231 cu. in.)
Engine type	OHV V6
Brake HP @ RPM	170 @ 4800
Net torque (lbs.-ft.) @ RPM	220 @ 3200
Compression ratio	8.5:1
Fuel management, fuel-injected	Tuned Port, Sequential
Transaxle	Electronic 4-speed automatic with overdrive
Suspension	
Front/Rear	4-wheel independent with MacPherson strut/coil spring



Park Avenue Ultra provides the Buick touch with a pair of overhead illuminated rear vanity mirrors that swing down from the headlining. Soft one-piece low-nap cloth headlining is meticulously fitted to the inner roof.

- Electric defogger on outside driver's mirror
- Theft-deterrent system with starter-interrupt
- Remote keyless entry system
- Smoked tail lamp lenses

##### INTERIOR FEATURES

- Specific Ultra interior: includes leather seating areas, 6-way power driver and passenger seat adjusters, dual power reclining seatbacks and driver's illuminated visor vanity mirror
- Driver's side memory seat with memory mirrors
- Leather-wrapped steering wheel
- AM stereo/FM stereo Delco ETR® radio with seek/scan, digital clock, graphic equalizer and auto-reverse cassette tape player
- Lamp monitoring system
- Automatic power door locks
- Electrochromic day-night inside rearview mirror
- Rear seat passenger illuminated visor vanity mirrors
- Rear headrests
- Power trunk-lid pull-down



Park Avenue's new wrap-around instrument panel layout includes convenient headlamp switches on driver's door and easy-to-read backlit instrumentation with new analogue gauge cluster. The Comfortilt steering wheel hub is the location of the Supplemental Inflatable Restraint system (air bag). Separate passenger side climate control switches are to be found on the passenger door.

##### EASY OPTION PACKAGES

The 1991 Park Avenue features available EASY OPTION PACKAGES\* to help simplify the buying process. You may choose the package containing the equipment you desire, then select from the accompanying list of individual options. Some restrictions apply. See your dealer for details.

OPTION DESCRIPTION	PARK AVENUE	
PACKAGE CODES	ISD	ISE
Four Note Horns	X	X
Remote Keyless Entry System	X	X
Cornering Lamps	X	X
Lamp Monitoring System	X	X
Electrochromic Day-Night Inside Rearview Mirror	-	X
Illuminated Driver's Visor Vanity Mirror	X	X
Electric Defogger on Outside Driver's Mirror	-	X
Automatic Power Door Locks	X	X
Driver's Side Memory Seat with Memory Mirrors	-	X
AM Stereo/FM Stereo Delco ETR® Radio with Seek/Scan, Digital Clock, Graphic Equalizer and Auto-Reverse Cassette Tape Player	-	X
Theft-Deterrent System with Alarm	X	X
Self-Sealing Tires	-	X
Power Trunk-Lid Pull-Down	X	X

\* No OPTION PACKAGES are available or required for the Park Avenue Ultra. X = Option Included in Package. - = Not in Package.

##### INDIVIDUAL OPTIONS

AVAILABILITY VARIES BY MODEL. SEE YOUR DEALER FOR DETAILS.

- Gran Touring Suspension Package: includes special suspension components, performance axle ratio, leather-wrapped steering wheel and all-season performance blackwall tires\*
- Trailing provisions: includes performance axle ratio, heavy-duty cooling system, transmission oil cooler and Gran Touring suspension
- 15" wire wheel covers with locks (Park Avenue)
- Special paint colour
- Monotone paint scheme (Ultra)
- Full padded vinyl roof cover (Park Avenue)
- Electric heated front windshield
- Leather seating areas (Park Avenue)
- AM/FM stereo Delco ETR® radio with seek/scan, digital clock, auto-reverse cassette tape player and Delco/Bose Gold Series 4-speaker system (Ultra)
- AM stereo/FM stereo Delco ETR® radio with

seek/scan, digital clock, graphic equalizer and auto-reverse cassette tape player (Park Avenue)

- AM stereo/FM stereo Delco ETR® radio with seek/scan, digital clock, graphic equalizer and compact disc (CD) player
- Astrorof sliding glass panel!\*\*\*†

\* Deletes self-sealing tires.

\*\* When Astrorof is specified, head room is reduced slightly.

† Deletes available lamp monitoring system and Ultra's overhead rear vanity mirrors.



Park Avenue standard 55/45 front seat. Seatback recliners, armrest with storage and 6-way power controls are amenities for your comfort and convenience. Shown with optional leather seating surfaces in Dark Auburn.

##### EXTERIOR COLOURS

Bright Silver Metallic<sup>1</sup>

Slate Gray<sup>1</sup>

Black Sapphire Metallic

White

Black

Light Auburn Metallic<sup>1</sup>

Dark Auburn Metallic

Medium Garnet Metallic<sup>1</sup>

Dark Garnet Metallic

Medium Slate Gray Metallic

Light Antelope Firemist Metallic<sup>1\*</sup>

All Park Avenue Ultra models include a standard lower body accent colour - Sterling Silver Metallic, Gunmetal Gray Metallic or Platinum Beige Firemist Metallic\* (depending on primary colour).

<sup>1</sup> N/A on Ultra.

\* Extra cost colour.



**RIVIERA** Riviera's long graceful lines and unique form make a powerful statement about those who drive it. One that reflects a premium lifestyle. And it has the substance to back that up. Four-wheel disc brakes with anti-lock braking for control, PASS-Key® Personalized Automotive Security System for theft-deterrence, DynaRide® 4-wheel independent suspension with a direct acting stabilizer bar for remarkable handling and a revised engine mount system makes the smooth-powered Riviera's new 3800 V6 engine even smoother.

RIVIERA COUPE SHOWN IN CLARET RED METALLIC ▼





Inside Riviera you'll find a level of superlative appointments that make ownership a genuine pleasure. The sound system with cassette tape player is enjoyed through 6 Concert Sound II speakers. The interior light control delays shutting off your interior lights for 25 seconds for convenience, and shuts them off after 10 seconds to save your battery if you have left a door ajar. Contoured reclining bucket seats with driver's side 6-way power seat adjuster is standard; a 14-way adjustable driver's seat that includes power lumbar and a power recliner is made available. If you wish, you may specify available Sierra grain leather in seating areas in place of Riviera's rich tasteful velour.

RIVIERA INTERIOR  
SHOWN IN DARK AUBURN  
AVAILABLE LEATHER  
SEATING SURFACES ►



*This Riviera touch is an available Electrochromic automatic day-night rearview mirror that, like photogray sunglasses, adjusts for annoying nighttime glare. It is adjustable for near/far sensitivity and will automatically revert back to daytime "clear" when transmission selector is put into Reverse.*





## RIVIERA standards/options

### BUICKS OFFERED IN THIS SERIES

MODEL	COUPE
Riviera	•

### STANDARD EQUIPMENT

#### EVERY RIVIERA INCLUDES:

##### CHASSIS/MECHANICAL

- Performance axle ratio
- Power rack-and-pinion steering
- 4-wheel power disc brakes
- Anti-lock braking system (ABS)
- Engine block heater
- Stainless steel exhaust system
- 4-wheel independent DynaRide® suspension
- Automatic rear level control
- All-season radial whitewall tires

#### EXTERIOR FEATURES

- Two-sided galvanized steel body panels
- Base coat/clear coat paint
- Composite tungsten halogen headlamps
- Automatic daytime running lamps w/Twilight Sentinel
- Cornering lamps
- Tinted glass
- Dual electric outside mirrors
- Illumination package for front door locks and interior
- Automatic power antenna
- 15" wire wheel covers with locks

#### INTERIOR FEATURES

- Front bucket seats with 6-way power driver's seat adjuster and dual manual recliners
- Floor console with storage, armrest and cup holder
- Driver's side Supplemental Inflatable Restraint system (air bag)
- Electronic analogue instrumentation: includes tachometer with low fuel and low oil life indicators
- PASS-Key® theft-deterrent system
- Leather-wrapped Comfortilt steering wheel and floor shifter
- Intermittent wipers
- Electronic cruise control
- Electronic Touch Climate Control
- AM/FM stereo Delco ETR® radio with seek/scan, digital clock, auto-reverse cassette tape player and 6-speaker Concert Sound II system
- Front side-window defoggers
- Power windows with floodlit controls
- Power door locks
- Convenience group: includes under-hood and trunk lamps
- Header panel reading lamps
- Illuminated visor vanity mirrors

- Carpeted front and rear floor mats
- Rear seat centre folding armrest
- Electric rear window defogger

- Power remote fuel filler door release
- Power trunk release

### RIVIERA DIMENSIONS: MM (IN.)

Wheelbase	2743 (108.0)	Height	1361 (53.6)
Track, front/rear	1521/1521 (59.9/59.9)	Curb weight: kg (lbs.)	1567 (3,454)
Tire size	P205/70R-15	Head room, front/rear	960/960 (37.8/37.8)
Wheel size (in.)	15 x 6	Leg room, front/rear	1085/904 (42.7/35.6)
Brake type, front/rear	Disc/Disc	Shoulder room, front/rear	1471/1458 (57.9/57.4)
Fuel tank: litres (gals.)	71 (15.7)	Seating capacity	5
Length	5037 (198.3)	Trunk capacity: litres (cu. ft.)	408 (14.4)
Width	1821 (71.7)		

### RIVIERA POWERTRAIN SPECIFICATIONS

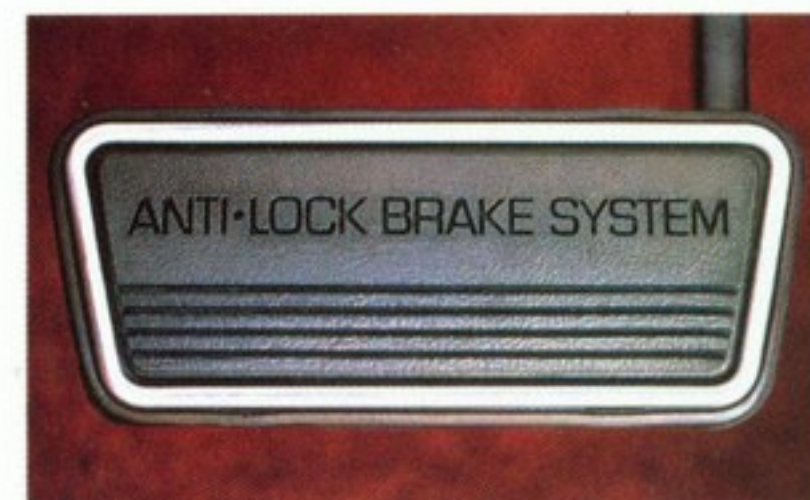
Engine	3800 V6
Displacement	3.8 Litre (231 cu. in.)
Engine type	OHV V6
Brake HP @ RPM	170 @ 4800
Net torque (lbs.-ft.) @ RPM	220 @ 3200
Compression ratio	8.5:1
Fuel management, fuel-injected	Tuned Port, Sequential
Transaxle	Electronic 4-speed automatic with overdrive
Suspension	
Front/Rear	4-wheel independent with MacPherson strut/transflex fiberglass rear leaf spring

### EASY OPTION PACKAGES

The 1991 Riviera features an available EASY OPTION PACKAGE to help simplify the buying process. You may choose the package or select from the accompanying list of individual options. Some restrictions apply. See your dealer for details.

OPTION DESCRIPTION	RIVIERA
PACKAGE CODES	ISE
Electrochromic Day-Night Inside Rearview Mirror	X
Electric Defogger on Outside Driver's Mirror	X
Power Trunk-Lid Pull-Down	X
Automatic Door Locks: includes Remote Keyless Entry System	X
6-Way Power Passenger Seat Adjuster with Power Recliner	X
Theft-Deterrent System with Alarm	X

X = Included in Package.



Standard anti-lock braking system (ABS) monitors each wheel and senses impending lockup. ABS works simultaneously if, for example, two wheels drop off the pavement onto the shoulder while braking on slippery surfaces or during hard braking on dry pavement, it assists you in maintaining steering control.



An added Riviera touch, the distinctive available padded Landau top adds a bright chrome bar and "closed-in" look rear window.



Riviera's instrument panel features a steering wheel hub-mounted Supplemental Inflatable Restraint system (air bag), digital speedometer for clarity and analogue instrumentation for quick, accurate readings (with Metric to English conversion). The full-operating console with warm-toned wood grain look includes an armrest and a thoughtful new fold-out cup holder.



New power comes from a 3800 V6 with Sequential Tuned Port Fuel Injection matched with a new electronically controlled 4-speed automatic transmission with overdrive and a new performance axle ratio. The 4-wheel independent suspension is either DynaRide® or available "Gran Touring" tuning for firmer command - includes 15" aluminum wheels and blackwall tires, as shown. With either suspension, you have the luxury of automatic rear level control.

### INDIVIDUAL OPTIONS

AVAILABILITY VARIES BY MODEL. SEE YOUR DEALER FOR DETAILS.

- Gran Touring Suspension Package: includes special springs, shocks and stabilizer bars, quick-ratio power steering, 15" x 6" aluminum wheels and P215/65R-15 all-season radial blackwall tires
- 15" aluminum wheels
- Riviera Appearance Package: includes painted aluminum wheels and specific Designer Accent two-tone paint
- Special paint colours
- Designer Accent two-tone paint
- Rear padded vinyl roof cover
- 14-way adjustable bucket seats with power driver's side recliner, power lumbar, and leather seating areas
- Leather seating areas
- AM stereo/FM stereo Delco ETR® radio with seek/scan, digital clock, graphic equalizer, auto-reverse cassette tape player and compact disc (CD) player
- AM stereo/FM stereo Delco ETR® radio with seek/scan, digital clock, auto-reverse cassette

tape player and compact disc (CD) player with Delco/Bose Gold Series speaker system

- Astrorof sliding glass panel\*

\* When Astrorof is specified, headroom is reduced slightly.

### OPTIONAL DESIGNER ACCENT TWO-TONE PAINT

Midnight Blue Metallic/Sterling Silver Metallic

Arctic White/Platinum Beige Firemist Metallic\*

Arctic White/Sterling Silver Metallic

Black/Platinum Beige Firemist Metallic\*

Black/Sterling Silver Metallic

Chestnut Brown Metallic/  
Platinum Beige Firemist Metallic\*

Ruby Red Metallic/Sterling Silver Metallic

Claret Red Metallic/Sterling Silver Metallic

Medium Sapphire Blue Metallic/  
Sterling Silver Metallic

Gunmetal Gray Metallic/Sterling Silver Metallic

\* These two-tone colours only available with optional Riviera Appearance Package.

Platinum Beige Firemist Metallic\*

\* Extra cost colour.

### EXTERIOR COLOURS

Sterling Silver Metallic

Midnight Blue Metallic

Arctic White

Black

Alabaster

Chestnut Brown Metallic

Ruby Red Metallic

Claret Red Metallic

Gunmetal Gray Metallic

White Diamond Metallic\*

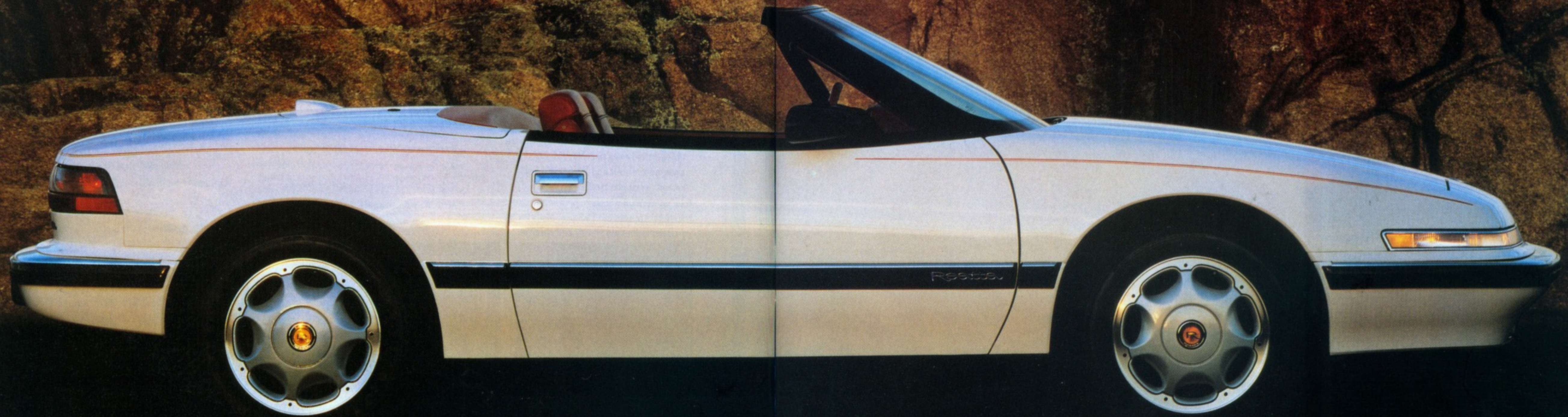
Platinum Beige Firemist Metallic\*

\* Extra cost colour.



**REATTa** Here is a world-class, high quality limited-production 2-seater Buick for those with a boundless zest for automotive adventure. With an attention-to-detail craftsmanship that represents a whole new meaning of quality in North America. A new 3800 V6 engine, electronically controlled automatic transmission, quick-ratio power steering, anti-lock braking system, low profile tires with 16" wheels – and 4-wheel independent Gran Touring suspension for sporting control. Adventure, you know, is a car called Reatta.

REATTa 2-PASSENGER CONVERTIBLE SHOWN IN ARCTIC WHITE ▼





Inside, Reatta is equally impressive. From the rich comfortable leather seating areas of the bucket seats to the Electronic Touch Climate Control, the appointments are what you'd expect in a premium Buick. Twilight Sentinel headlamp control, remote keyless entry system and the PASS-Key® Personalized Automotive Security System adds to your peace of mind while the Concert Sound II speaker system adds to your pleasure. Both coupe and convertible provide 2 lockable rear floor storage areas behind the front seats, sunshades with vertical slide-out extensions, driver's side heated outside mirror, 16-way adjustable driver's seat and 6-way power passenger seat. Reatta is executed so thoroughly that only the compact disc (CD) player and the coupe's steel power sliding roof panel are available added pleasures.

REATA COUPE INTERIOR  
WITH SADDLE LEATHER  
SEATING SURFACES ►



*In the coupe, a locking door provides access to the trunk and room to carry long objects. Both models provide enough trunk space for two complete sets of golf clubs.*





## REATA standards/options

### BUICKS OFFERED IN THIS SERIES

#### MODEL COUPE CONVERTIBLE

Reatta • •

### STANDARD EQUIPMENT

#### EVERY REATA INCLUDES:

##### CHASSIS/MECHANICAL

- Performance axle ratio
- Quick-ratio power rack-and-pinion steering
- 4-wheel power disc brakes
- Anti-lock braking system (ABS)
- Engine block heater
- Stainless steel exhaust system with dual outlet exhaust
- Gran Touring independent 4-wheel suspension
- All-season Touring blackwall tires
- 16" aluminum wheels

#### EXTERIOR FEATURES

- Base coat/clear coat paint
- Retractable tungsten halogen headlamps
- Automatic daytime running lamps w/Twilight Sentinel
- Cornering lamps
- Fog lamps
- Tinted glass
- Dual electric outside mirrors (driver's side defogger)
- Illumination package for front door locks and interior
- Theft-deterrent system
- Remote keyless entry system
- Power release hard tonneau cover and manual folding cloth top with rear glass tinted window (Convertible)
- Automatic power antenna

#### INTERIOR FEATURES

- 16-way adjustable driver's seat with power recliner, power lumbar and articulating head restraints
- 6-way power passenger seat adjuster with power recliner
- Leather seating areas
- Floor console with storage, centre armrest and cup holder
- Driver's side Supplemental Inflatable Restraint system (air bag)
- Electronic analogue instrumentation: includes tachometer with low fuel and low oil indicators
- PASS-Key® theft-deterrent system
- Leather-wrapped Comfortilt steering wheel and floor shifter
- Intermittent wipers
- Electronic cruise control
- Electronic Touch Climate Control

- AM stereo/FM stereo Delco ETR® radio with seek/scan, digital clock, graphic equalizer, auto-reverse cassette tape player and 6-speaker Concert Sound II system
- Front side-window defoggers
- Power windows with floodlit controls
- Automatic power door locks
- Retained Accessory Power
- Convenience group: includes under-hood and trunk lamps

- Inside rearview mirrors with dual reading lamps
- Extendable slide-out sunshades
- Illuminated visor vanity mirrors
- Anti-slip carpeted front floor mats
- Lockable rear storage compartments
- Lockable trunk (pass-thru) access door (Coupe)
- Electric rear window defogger
- Power fuel filler door release
- Power trunk release

#### REATA DIMENSIONS: MM (IN.)

Wheelbase	2502 (98.2)	Height	1300 (51.2)
Track, front/rear	1532/1532 (60.3/60.3)	Curb weight: kg (lbs.)	1539 (3,392)*
Tire size	P215/60R-16	Head room, front	937 (36.9)
Wheel size (in.)	16 x 7	Leg room, front	1095 (43.1)
Brake type, front/rear	Disc/Disc	Shoulder room, front	1448 (57.0)
Fuel tank: litres (gals.)	71 (15.7)	Seating capacity	2
Length	4661 (183.5)	Trunk capacity:	
Width	1854 (73.0)	litres (cu. ft.)	297 (10.5)†

\* 1630 (3,593), Convertible.

† 283 (10.0), Convertible.

#### REATA POWERTRAIN SPECIFICATIONS

Engine	3800 V6
Displacement	3.8 Litre (231 cu. in.)
Engine type	OHV V6
Brake HP @ RPM	170 @ 4800
Net torque (lbs.-ft.) @ RPM	220 @ 3200
Compression ratio	8.5:1
Fuel management, fuel-injected	Tuned Port, Sequential
Transaxle	Electronic 4-speed automatic with overdrive
Suspension	
Front/Rear	4-wheel independent with MacPherson strut/transflex fiberglass rear leaf spring

#### INDIVIDUAL OPTIONS

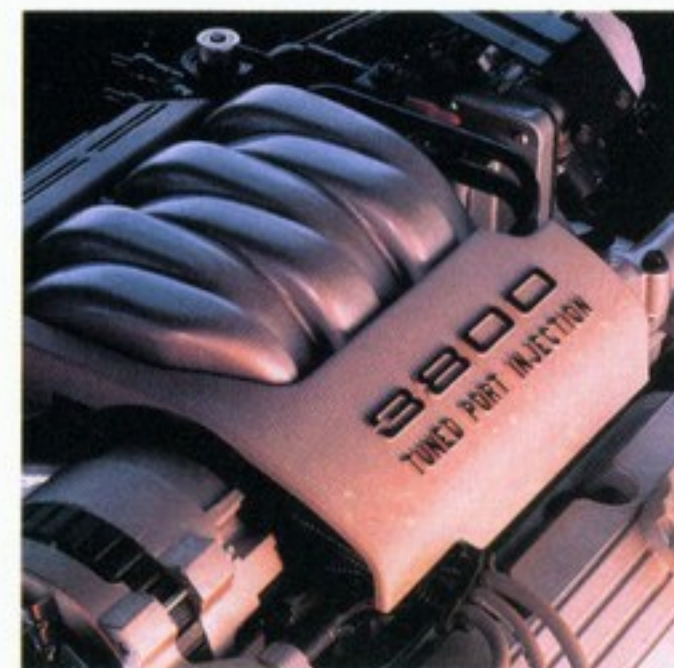
AVAILABILITY VARIES BY MODEL. SEE YOUR DEALER FOR DETAILS.

- AM stereo/FM stereo Delco ETR® radio with seek/scan, digital clock, graphic equalizer,

auto-reverse cassette tape player and compact disc (CD) player

- Power sliding steel sunroof\* (Coupe)

\*When sunroof is specified, headroom is reduced slightly.



The 170 HP 3800 V6 with Sequential Tuned Port Injection and the new electronically controlled 4-speed automatic transmission with overdrive combine for smooth power in town and on the road.



The instrument panel features a digital speedometer for clarity and a full complement of analogue gauges for quick accurate reading. (The press of a button changes all gauges from Metric to English.) The leather-wrapped steering wheel features a hub mounted Supplemental Inflatable Restraint system (air bag) for added protection.



Reatta Coupe's tailored luxury starts on the outside with every body panel (except roof) made of steel galvanized with zinc on both sides or, of a composite impervious to corrosion, and ends with a unique hand-prepared clear coat finish of astonishing depth and lustre. Shown here in Maui Blue Metallic.



The Reatta Convertible with power-release hard tonneau and easy-to-raise top in vinyl or cloth (depending on colour chosen) includes a glass backlight and electric defogger.



Reatta Convertible - even top up it deserves every admiring glance it wins, shown here in Bright Red with Saddle top. Solid, well-made top is now available in five matching or contrasting colours to compliment your good taste of body colour choice.

#### EXTERIOR COLOURS

Sterling Silver Metallic



Maui Blue Metallic



Light Driftwood Metallic



Arctic White



Black



Claret Red Metallic



Bright Red



Gunmetal Gray Metallic

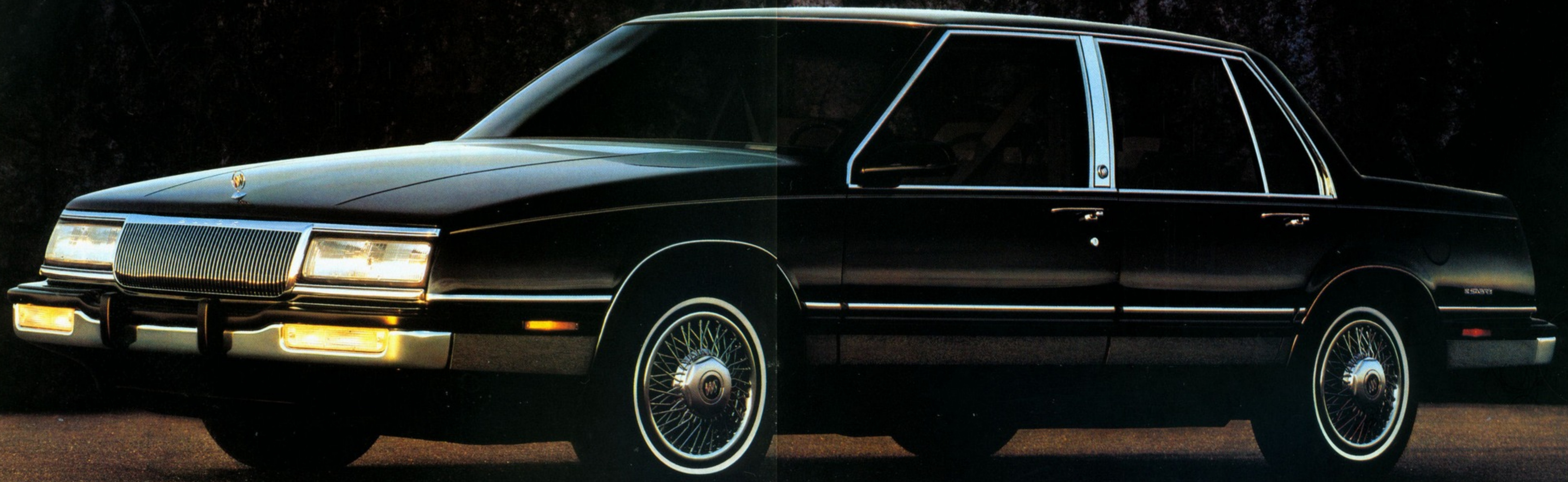




**LESABRE** Handsome looks, comfortable appointments, a confident, satisfying level of performance and a full measure of Buick quality make owning and driving it a gratifying experience. Best of all, LeSabre's recognized high level of quality, 6-passenger size and features are available at a price that will not offend your sense of proportion. (LeSabre was recently rated the top domestic nameplate "most trouble-free"\*).

\*Based on a study conducted by an independent market research company, J.D. Power and Associates 1990 Quality Survey. Based on owner-reported problems in the first 90 days of ownership.

LESABRE LIMITED SEDAN SHOWN IN BLACK ▼





Here is an automobile of the caliber one might expect from Buick. The power of LeSabre is its 3800 V6 engine with Sequential Port Fuel Injection, coupled to a smooth 4-speed automatic with overdrive. Underneath, DynaRide® 4-wheel independent suspension especially tuned to your LeSabre, provides a smooth ride with responsive handling. Limited Sedans offer available automatic level control, with or without the option of a Gran Touring Package componentry that allows you to get a bit more 'bite' out of those 2-lane back roads. Both Custom and Limited offer anti-lock braking (ABS). All around you, tailored plush velour fabrics cover comfortable 55/45 divided front seating. If you haven't owned a Buick before, be prepared for a substantial list of standard equipment that includes Comfortilt steering wheel and air conditioning.

LESABRE LIMITED  
INTERIOR, SHOWN IN DARK  
GARNET RED AND 55/45  
SPLIT FRONT SEATING ►



*The premium sound system on LeSabre can be even further enhanced with the addition of a graphic equalizer, for fine tuning, and the inclusion of six high quality Concert Sound II speakers.*





LESABRE standards/options

BUICKS OFFERED IN THIS SERIES

MODEL	SEDAN
LeSabre Custom	•
LeSabre Limited	•

STANDARD EQUIPMENT  
EVERY LESABRE CUSTOM INCLUDES:  
CHASSIS/MECHANICAL

- Brake/transmission shift interlock
- Power rack-and-pinion steering
- Power front disc/rear drum brakes
- Engine block heater
- 4-wheel independent DynaRide® suspension
- All-season radial whitewall tires

EXTERIOR FEATURES

- Base coat/clear coat paint
- Composite tungsten halogen headlamps
- Automatic daytime running lamps w/Twilight Sentinel
- Tinted glass
- Dual outside mirrors (left remote)
- Deluxe full wheel covers

INTERIOR FEATURES

- 55/45 divided custom bench front seat w/storage armrest and dual recliners
- Trip odometer
- Comfortilt steering wheel
- Intermittent wipers
- Electronic cruise control
- Air conditioning
- AM/FM stereo Delco ETR® radio with seek/scan, digital clock, auto-reverse cassette tape player and 4-speakers
- Front side-window defoggers
- Carpeted front and rear floor mats
- Electric rear window defogger
- Power trunk release

IN ADDITION TO (OR IN LIEU OF) THE STANDARD EQUIPMENT ALREADY LISTED ON LESABRE CUSTOM, EVERY LESABRE LIMITED INCLUDES:

EXTERIOR FEATURES

- Lower body side mouldings
- Automatic power antenna
- 14" wire wheel covers with locks

INTERIOR FEATURES

- Deluxe Limited interior trim
- Electronic Touch Climate Control
- Illuminated passenger visor vanity mirror
- Front courtesy and reading lamps
- Rear reading lamps
- Deluxe luggage compartment trim

LESABRE DIMENSIONS: MM (IN.)

Wheelbase	2815 (110.8)	Height	1386 (54.6)
Track, front/rear	1532/1518 (60.3/59.8)	Curb weight: kg (lbs.)	1483 (3,269)
Tire size	P205/75R-14	Head room, front/rear	989/970 (38.9/38.3)
Wheel size (in.)	14 x 6	Leg room, front/rear	1076/983 (42.4/38.7)
Brake type, front/rear	Disc/Drum	Shoulder room, front/rear	1511/1511 (59.5/59.5)
Fuel tank: litres (gals.)	68 (15.0)	Seating capacity	6
Length	4991 (196.5)	Trunk capacity: litres (cu. ft.)	464 (16.4)
Width	1831 (72.4)		

LESABRE POWERTRAIN SPECIFICATIONS

Engine	3800 V6
Displacement	3.8 Litre (231 cu. in.)
Engine type	OHV V6
Brake HP @ RPM	165 @ 5200
Net torque (lbs.-ft.) @ RPM	210 @ 2000
Compression ratio	8.5:1
Fuel management, fuel-injected	Port, Sequential
Transaxle	4-speed automatic with overdrive
Suspension	
Front/Rear	4-wheel independent with MacPherson strut/coil spring

EASY OPTION PACKAGES

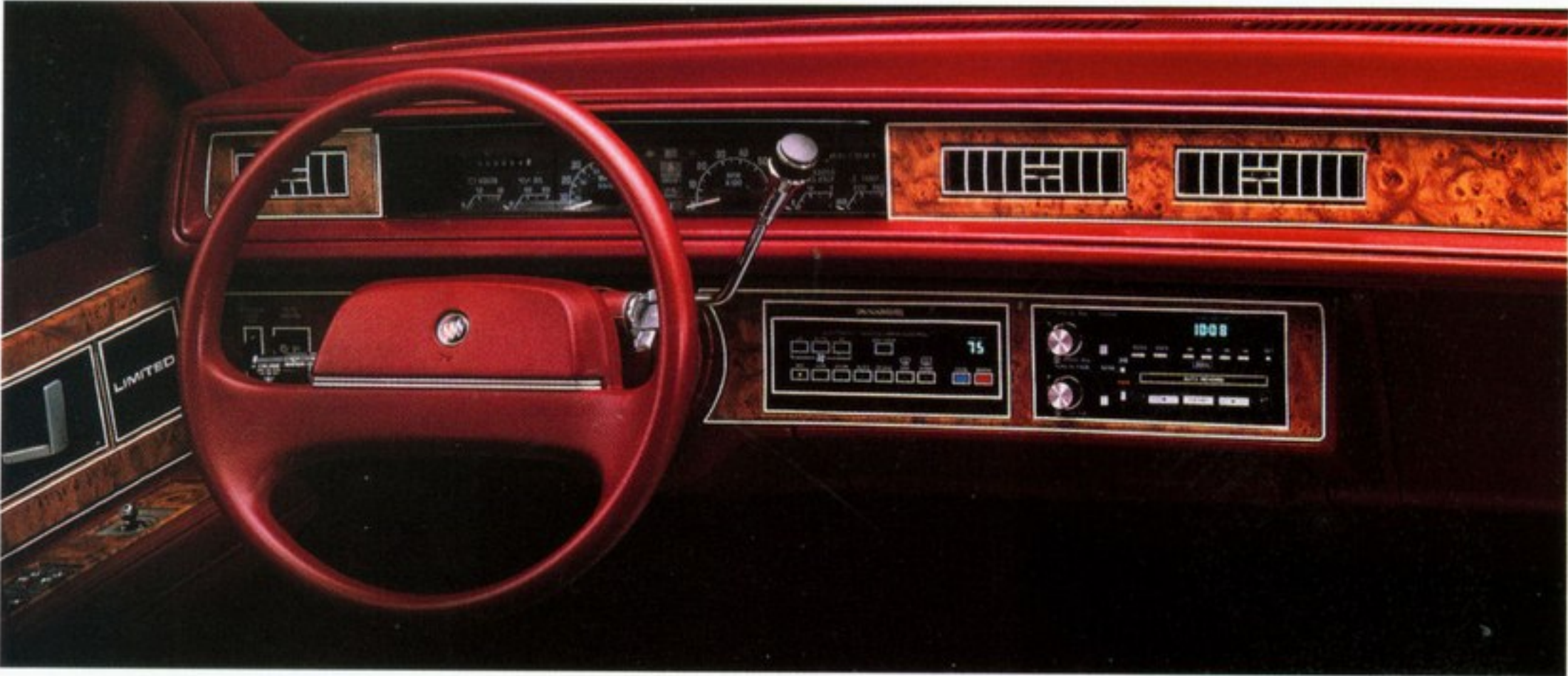
The 1991 LeSabres feature available EASY OPTION PACKAGES to help simplify the buying process. Choose the package containing the equipment you desire, then select from the accompanying list of individual options. Some restrictions apply. See your dealer for details.

OPTION DESCRIPTION	LESABRE CUSTOM	LESABRE LIMITED
PACKAGE CODES	ISE	ISC
Door Courtesy and Warning Lamps	-	X
Dual Electric Outside Rearview Mirrors	X	X
Illuminated Passenger Visor Vanity Mirror	X	S
Power Door Locks	X	X
Power Passenger Side Seat Recliner	-	X
6-Way Power Driver's Seat Adjuster	-	X
Power Windows	X	X
AM Stereo/FM Stereo Delco ETR® Radio with Seek/Scan, Digital Clock, Graphic Equalizer and Auto-Reverse Cassette Tape Player	-	X
6-Speaker Concert Sound II System	X	X

X = Included in Package.  
- = Not in Package.  
S = Standard Equipment.



Both Custom and Limited Sedans offer this optional highly accurate quartz analogue gauge cluster: includes voltmeter, oil and coolant temperature gauges and tachometer.



LeSabre Limited instrument panel trimmed with tasteful touches of woodgrain accents. Includes Electronic Touch Climate Control and AM/FM stereo sound system with cassette tape player. Shown here with available full analogue gauge cluster.

INDIVIDUAL OPTIONS

AVAILABILITY VARIES BY MODEL.  
SEE YOUR DEALER FOR DETAILS.

- Anti-lock braking system (ABS)
- Automatic rear level control (Limited)
- Gran Touring Suspension Package: includes performance axle ratio, special suspension components, leather-wrapped steering wheel, P215/65R-15 all-season blackwall tires, 15" x 6" aluminum wheels, heavy-duty cooling systems and automatic rear level control (Limited)
- 14" aluminum wheels (Limited)
- 14" wire wheel covers with locks (Custom)

- Full padded vinyl roof cover
- Deck-lid luggage carrier
- Automatic power antenna (Custom)
- 6-way power driver's seat adjuster
- 6-way power passenger seat adjuster (Limited)
- Quartz full analogue instrumentation with tachometer
- AM stereo/FM stereo Delco ETR® radio with seek/scan, digital clock, auto-reverse cassette tape player and 6-speaker Concert Sound II system (Limited)
- Power windows
- Power door locks

EXTERIOR COLOURS

- Sterling Silver Metallic
- Ice Blue Metallic
- Midnight Blue Metallic
- Arctic White
- Black
- Saddle Brown Metallic
- Walnut Brown Metallic
- Ruby Red Metallic
- Claret Red Metallic
- Gunmetal Gray Metallic



Full size LeSabre Custom Sedan, while priced slightly less than Limited, nonetheless shares the same priorities - impressive interior space and a large flat trunk.



**REGAL SEDAN** The totally new front-wheel drive Regal Sedan is the beginning of a whole new class of North American built Sedans: World Class. It's built to please you and your family and it was designed to enhance the long-standing Buick reputation for quality. With a sleek cosmopolitan look, V6 powered Regals move on an exclusive DynaRide® 4-wheel lubed-for-life independent suspension featuring componentry that was carefully computer-selected especially for Regal Sedans, to deliver a premium ride.

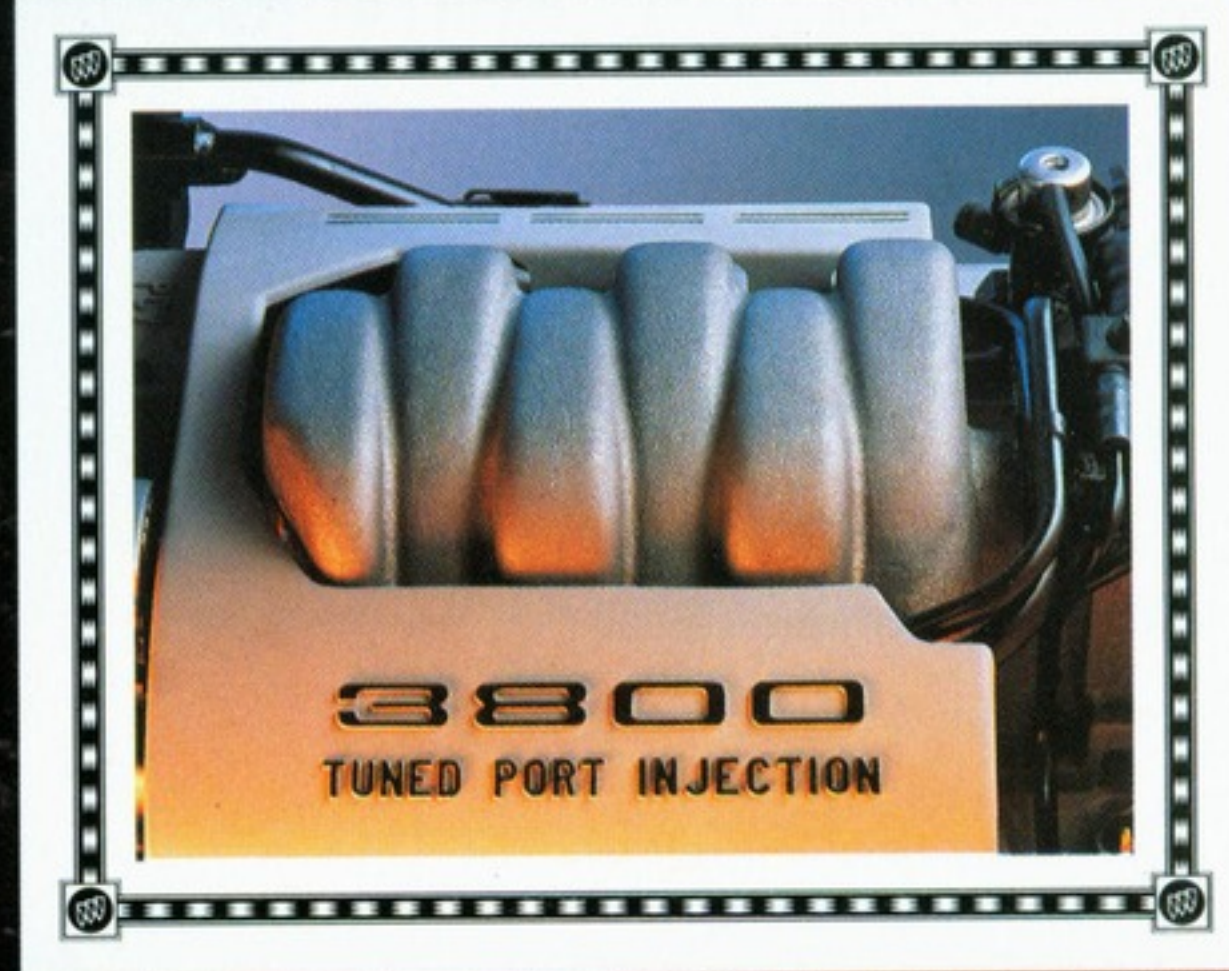
REGAL LIMITED SEDAN SHOWN IN MEDIUM GARNET RED METALLIC ▼





**REGAL COUPE** Understated consistent good looks, comfort and luxury are what you expect in a Buick – and they're all here in the sleek and sporting Regal Coupe. Regal slips through the air smoothly while the standard 3.1 Litre V6 engine moves you along in an exhilarating rush. Also available is our much acclaimed new 3800 V6 with Sequential Tuned Port Fuel Injection with 170 HP and 220 lbs.-ft. torque. On either engine is a long life stainless steel exhaust system and an ignition system so dependable that "starts" are so quick they are measured in milliseconds. Four-wheel disc brakes with available anti-lock braking system and power rack-and-pinion steering make the most of the road.

REGAL LIMITED COUPE SHOWN IN MEDIUM SLATE GRAY METALLIC ▼





Relaxed, fashionable sew patterns make these Buick interiors very “regal” indeed. An abundance of ebony trim accents, rich fabric upholstery (or available genuine leather) and plush, low nap wool-like carpeting make that point tastefully obvious. A digital speedometer is standard on Custom models. Limited and Gran Sport feature a new standard highly accurate quartz analogue gauge cluster including tachometer. On both Limited Sedan or Coupe, or Custom Coupe with the Gran Sport option package, is the most advanced available air conditioning system in Regal’s class – dual ComforTemp Climate Control that lets you and your front seat passenger select comfort settings ... separately.

REGAL LIMITED COUPE  
55/45 SPLIT FRONT SEAT  
CLOTH INTERIOR SHOWN  
IN SLATE GRAY ►



*This finest breed of air conditioning systems, the new dual ComforTemp Climate Control available on Limited and Gran Sport, has individual temperature controls for driver and passenger. A fine German car, also offers separate front controls ... a car costing twice that of Regal.*





**REGAL GRAN SPORT** Premium doesn't necessarily mean - soft. For here's a solid package that includes a superlative 3800 V6 with Sequential Tuned Port Fuel Injection for authoritative performance, quiet, more comfortable riding 16" all-season Touring blackwall tires, Gran Touring suspension with sport-tuned equipment, fog lamps, aero rocker panel "spats" (Coupe only), and blackout trim. It's even possible to turn your Regal GS into an impressive four-seater - four bucket seats, 6-way power driver's seat and anti-lock brakes are all available. We could go on. Model availability: Custom Coupe or Limited Sedan.

REGAL CUSTOM COUPE WITH GRAN SPORT PACKAGE SHOWN IN MEDIUM GARNET RED METALLIC ▼



REGAL LIMITED SEDAN WITH GRAN SPORT PACKAGE SHOWN IN WHITE WITH STANDARD MEDIUM SLATE GRAY METALLIC ACCENT ▲

**REGAL CUSTOM** While sedan and coupe share much mechanical componentry, the look is dramatically different. Common to both is a standard 3.1 L V6 engine with Multi Port Fuel Injection, a four-wheel independent suspension and a unique GM transverse mounted fiberglass single-leaf rear spring for maximum ride comfort. The use of high-density materials to isolate engine and suspension componentry from the body structure is also common. And both coupe and sedan are built of two-sided galvanized steel for superior corrosion-resistance.

REGAL CUSTOM SEDAN SHOWN IN MEDIUM GARNET RED METALLIC ▼



REGAL CUSTOM COUPE SHOWN WITH OPTIONAL TWO-TONE IN STERLING SILVER METALLIC AND MEDIUM SLATE GRAY METALLIC ▲



## REGAL standards/options

### BUICKS OFFERED IN THIS SERIES

MODEL	COUPE	SEDAN
Regal Custom	•	•
Regal Limited	•	•

### STANDARD EQUIPMENT

#### EVERY REGAL CUSTOM INCLUDES:

##### CHASSIS/MECHANICAL

- Power rack-and-pinion steering
- 4-wheel power disc brakes
- Engine block heater
- Stainless steel exhaust system
- 4-wheel independent DynaRide® suspension
- All-season radial whitewall tires

#### EXTERIOR FEATURES

- Two-sided galvanized steel body panels
- Base coat/clear coat paint
- Composite tungsten halogen headlamps
- Automatic daytime running lamps w/Twilight Sentinel
- Wet arm wiper system
- Tinted glass
- Dual outside mirrors (left remote)
- 14" styled steel wheels

#### INTERIOR FEATURES

- 55/45 divided front bench seat with dual recliners and folding centre armrest
- Digital speedometer
- Comfortilt steering wheel
- Intermittent wipers
- Air conditioning
- AM/FM stereo Delco ETR® radio with seek/scan, digital clock, auto-reverse cassette tape player and Extended Range Sound system
- Front side-window defoggers
- Carpeted front and rear floor mats
- Electric rear window defogger

IN ADDITION TO (OR IN LIEU OF) THE STANDARD EQUIPMENT ALREADY LISTED ON REGAL CUSTOM, EVERY REGAL LIMITED FEATURES:

#### EXTERIOR FEATURES

- Dual electric outside mirrors
- Bright side mouldings
- Crystalline tail lamp lenses (Coupe)
- 15" wire wheel covers with locks

#### INTERIOR FEATURES

- Deluxe Limited interior trim
- Full analogue instrumentation: includes tachometer (Custom)
- Electronic cruise control
- Front courtesy and dual reading lamps
- Illuminated passenger visor vanity mirror
- Rear interior roof courtesy and dual reading lamps (Sedan)
- Power trunk release

### REGAL DIMENSIONS: MM (IN.)

	COUPE	SEDAN		COUPE	SEDAN
Wheelbase	2730 (107.5)	2730 (107.5)	Height	1346 (53.0)	1379 (54.3)
Track, front/rear	1511/1473 (59.5/58.0)	1511/1473 (59.5/58.0)	Curb weight: kg (lbs.)	1468 (3,237)	1435 (3,163)
Tire size*	P205/70R-14	P205/70R-14	Head room, front/rear	960/942 (37.8/37.1)	983/960 (38.7/37.8)
Wheel size (in.)**	14 x 5.5	14 x 5.5	Leg room, front/rear	1074/884 (42.3/34.8)	1077/919 (42.4/36.2)
Brake type, front/rear	Disc/Disc	Disc/Disc	Shoulder room, front/rear	1463/1443 (57.6/56.8)	1468/1468 (57.8/57.8)
Fuel tank: litres (gals.)	62 (13.7)	62 (13.7)	Seating capacity	6	6
Length	4917 (193.6)	4943 (194.6)	Trunk capacity: litres (cu. ft.)	442 (15.6)	447 (15.8)
Width	1842 (72.5)	1800 (70.9)			

\* P205/70R-15, Limited; P225/60R-16, Gran Sport Package.

\*\* 15" x 6", Limited; 16" x 6.5", Gran Sport Package.

### REGAL POWERTRAIN SPECIFICATIONS

Engine	3.1 Litre V6	3800 V6
Displacement	3.1 Litre (191 cu. in.)	3.8 Litre (231 cu. in.)
Engine type	OHV V6	OHV V6
Brake HP @ RPM	140 @ 4800	170 @ 4800
Net torque (lbs.-ft.) @ RPM	180 @ 3600	220 @ 3200
Compression ratio	8.9:1	8.5:1
Fuel management, fuel-injected	Multi Port	Tuned Port, Sequential
	Standard on Custom and Limited	Standard with Gran Sport Package, available on Custom and Limited
Transaxle	4-speed automatic with overdrive	4-speed automatic with overdrive
Suspension		
Front/Rear	4-wheel independent with MacPherson struts/Transverse fiberglass rear leaf spring	

### EASY OPTION PACKAGES

The 1991 Regals feature available EASY OPTION PACKAGES to help simplify the buying process. Choose the package containing the equipment you desire, then select from the accompanying list of individual options. Some restrictions apply. See your dealer for details.

OPTION DESCRIPTION	REGAL CUSTOM	REGAL SPORT COUPE	REGAL SPORT LIMITED	REGAL SPORT SEDAN
PACKAGE CODES	ISC	ISD	ISE	ISE
Gran Sport Package	-	-	X†	X‡
3800 V6 with Sequential Tuned Port Fuel Injection	-	-	X	X
Cloth Reclining Front Bucket Seats with Floor Console	-	-	X	X
Automatic Power Antenna	-	X	X	X
Electronic Cruise Control	X	X	X	X
Courtesy & Dual Reading Lamps	X	X	X	X
Illuminated Passenger Visor	-	-	-	-
Vanity Mirror	X	X	X	X
Dual Electric Outside Rearview Mirrors	-	X	X	X
Power Door Locks	X	X	X	X
Power Windows with "express down" driver's feature	-	X	X	X
Power Trunk Release	X	X	X	X
Remote Keyless Entry System	-	-	-	-

X = Included in Package.

- = Not in Package.

S = Standard Equipment.

† Gran Sport Package (Custom Coupe): includes Gran Touring Suspension, leather-wrapped steering wheel, fog lamps, front air dam, full analogue instrumentation, lower aero mouldings "ground effects" package, black-out trim, P225/60R-16 all-season blackwall Touring tires, 16" aluminum wheels plus all that is listed in the ISE Easy Option Package.

‡ Gran Sport Package (Limited Sedan): includes Gran Touring Suspension, leather-wrapped steering wheel, two-tone paint, P225/60R-16 all-season blackwall Touring tires, 16" aluminum wheels plus all that is listed in the ISE Easy Option Package.



While air conditioning, tilt steering wheel and stereo system with auto-reverse cassette tape player are standard, it is possible to add appointments such as steering wheel hub stereo controls and compact disc (CD) player (both shown). New for 1991 on Limited and Gran Sport a standard quartz analogue gauge cluster including tachometer shown here.

### INDIVIDUAL OPTIONS

AVAILABILITY VARIES BY MODEL. SEE YOUR DEALER FOR DETAILS.

- 3800 V6 engine with Sequential Tuned Port Fuel Injection
- Anti-lock braking system (ABS)
- Gran Touring Suspension Package: includes special suspension components, leather-wrapped steering wheel, 16" aluminum wheels and P225/60R-16 all-season blackwall Touring tires
- 14" styled steel wheels: includes P205/70R-14 all-season blackwall tires (Custom)
- 14" aluminum wheels: includes P205/70R-14 all-season blackwall tires
- 15" wire wheel covers with locks: includes P205/70R-15 whitewall tires (Custom)
- 15" aluminum wheels: includes P205/70R-15 blackwall tires (Custom, Limited)
- Exterior Ribbon Appearance Package: includes special bumper, deluxe body side mouldings and special rear tail lamps (Custom Coupe, Limited Coupe)
- Designer Accent two-tone paint (Custom Coupe, Limited Coupe)
- Deck-lid luggage carrier
- Automatic power antenna (Custom Coupe and Sedan)
- Cloth reclining front bucket seats with floor console (Custom)
- Leather trim seating areas with reclining front bucket seats and floor console: includes 6-way power driver's seat (Gran Sport Package, Limited Sedan)



Regal's ingenious available remote Keyless Entry System allows you to unlock or lock your car - and unlock your trunk - from up to 5 metres (15 feet) away.

- Leather trim seating areas with 55/45 split bench seats: includes 6-way power driver's seat (Limited Coupe)
- 6-way power driver's seat (Custom, Limited)
- Four-Seater Sport Package: includes cloth reclining front bucket seats with floor console, rear bucket seats, leather-wrapped steering wheel and 6-way power driver's seat (Limited Sedan, Gran Sport Package)
- Dual ComforTemp Climate Control for front driver and passenger (Gran Sport Package, Limited Coupe and Sedan)
- AM stereo/FM stereo Delco ETR® radio with seek/scan, digital clock, graphic equalizer, auto-reverse cassette tape player, Concert Sound II speaker system and steering wheel touch controls (Limited Coupe and Sedan, Gran Sport Package)
- AM/FM stereo Delco ETR® radio with seek/scan, digital clock, compact disc (CD) player, Concert Sound II speaker system and steering wheel touch controls (N/A Custom Sedan)
- Power windows with "express down" driver's feature
- Power door locks (Custom Coupe and Sedan)
- Remote keyless entry system
- Astrorooof sliding glass panel\* (Limited Coupe and Sedan, Gran Sport Package)

\* When Astrorooof is specified, headroom is reduced slightly.



When people think of Buick, they usually think of a comfortable ride. DynaRide® suspension adds to that reputation with the use of deflected-disc shock absorber valving that senses the intensity of road irregularities and reacts accordingly, providing smoothness and control. The system uses a pyramidal stacking of discs that vary in diameter and thickness. A minor road shock deflects just the first disc for isolation from road imperfections. In more severe road conditions, fluid pressure in the shock absorbers bends the thicker discs and flows through the others in the stack, for additional control.

### EXTERIOR COLOURS

Sterling Silver Metallic	
Medium Maui Blue Metallic¹	
Blue Sapphire Metallic	
Black Sapphire Metallic²	
White	
Black	
Camel Beige 1-2	
Medium Garnet Red Metallic	
Dark Garnet Red Metallic	
Medium Slate Gray Metallic	

¹ N/A on Gran Sport Sedan.

² N/A on Gran Sport Coupe.

All monotone colours are standard on Regal. A lower body accent colour (Medium Slate Gray Metallic) is standard on Gran Sport Sedan.

### OPTIONAL DESIGNER ACCENT TWO-TONE PAINT (COUPE ONLY)

Sterling Silver Metallic/Medium Slate Gray Metallic

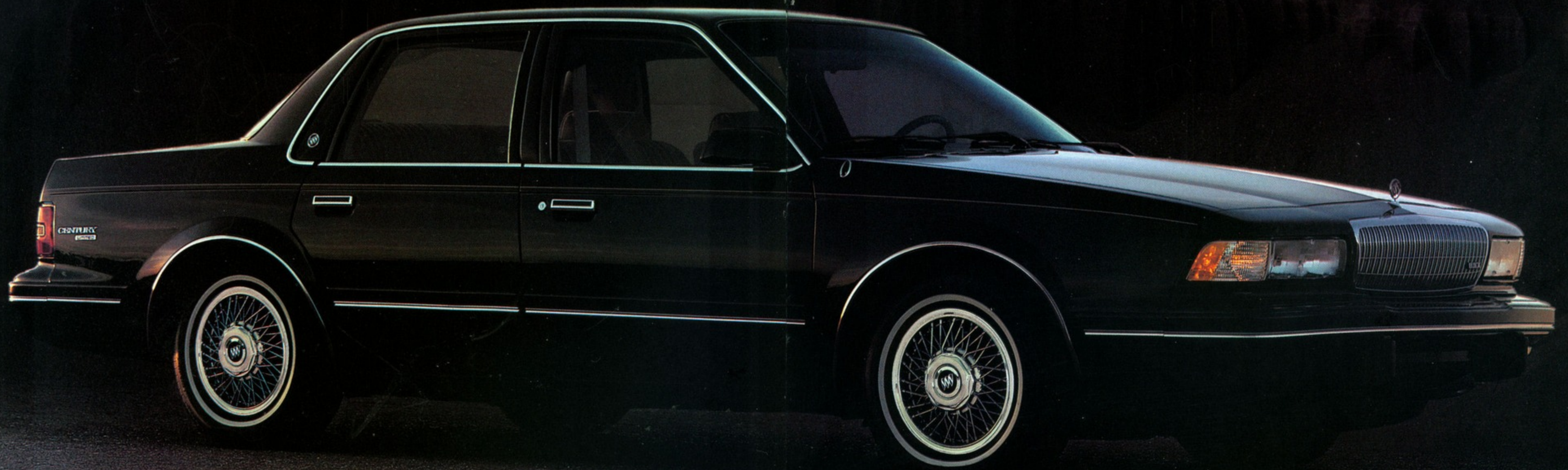
Black/Sterling Silver Metallic

Medium Garnet Red Metallic/Sterling Silver Metallic



**CENTURY** The beauty of Buick Century is not just its styling and comfort. It is also the way Century delivers real worth along with proven Buick quality. Available as an energetic, 4-cylinder Custom Sedan, luxurious 3.3 L V6 Limited Sedan or 3.3L V6 8-passenger Limited Wagon, Century has the appointments that make ownership a pleasure. No wonder Buick owners keep selling Buicks for us.

CENTURY LIMITED SEDAN SHOWN IN BLACK ▼





Solid, responsive and comfortable in the Buick tradition. The smooth DynaRide® suspension sedans, and the higher capacity suspension on the wagon make them desirable motorcars for long distance. There is a certain satisfaction in the conveniences found in all Centurys. 55/45 split bench front seats covered in plush velour, power reclining seatbacks, air conditioning and intermittent windshield wiper system are all Buick touches. In the sedans, even the trunk is trimmed for a tailored look – to protect your luggage. Accents of burl woodgrain trim make the Century Limited interior even more luxurious. And lockable storage compartments in the wagon cargo area keep your valuables secure.

CENTURY LIMITED, WITH 55/45 FRONT SEATS SHOWN HERE IN DARK BLUE SAPPHIRE ►



*The mature choice of a Buick says something about the buyer – for you like the finer things in life right down to the reproduced sound you hear. Available Delco compact disc (CD) player shown.*





## CENTURY standards/options

### BUICKS OFFERED IN THIS SERIES

MODEL	SEDAN	WAGON
Century Custom	•	
Century Limited	•	•

### STANDARD EQUIPMENT

#### EVERY CENTURY CUSTOM INCLUDES:

- CHASSIS/MECHANICAL**
- Power rack-and-pinion steering
  - Power front disc/rear drum brakes
  - Engine block heater
  - DynaRide® suspension (Sedans)
  - All-season radial whitewall tires

### EXTERIOR FEATURES

- Base coat/clear coat paint
- Composite tungsten halogen headlamps
- Automatic daytime running lamps w/Twilight Sentinel
- Tinted glass
- Dual outside mirrors (left remote)
- Deluxe full wheel covers

### INTERIOR FEATURES

- 55/45 divided front bench seat with power recliners
- Front seat storage armrest
- Instrumentation: includes oil pressure, coolant temperature, voltmeter gauges with trip odometer
- Front side-window defogger
- Air conditioning
- AM/FM stereo Delco ETR® radio with seek/scan, digital clock and 6-speaker Concert Sound II system
- Convenience group: includes under-hood, and rear reading lamps
- Passenger visor vanity mirror
- Carpeted front and rear floor mats
- Electric rear window defogger
- Luggage compartment cargo net

#### IN ADDITION TO (OR IN LIEU OF) THE STANDARD EQUIPMENT ALREADY LISTED ON CENTURY CUSTOM, EVERY CENTURY LIMITED WAGON FEATURES:

### EXTERIOR FEATURES

- Wide lower bright body side moulding
- Door edge guards
- Roof luggage carrier
- Rear window air deflector
- 14" wire wheel covers with locks

### INTERIOR FEATURES

- Comfortilt steering wheel
- Intermittent wipers
- Electronic cruise control
- AM/FM stereo Delco ETR® radio with seek/scan, digital clock, auto-reverse cassette

tape player and 6-speaker Concert Sound II system

- Illuminated visor vanity mirrors
- Split-folding rear seatbacks
- Rear-facing vinyl third seat
- Rear stowage compartment with lock
- Rear quarter vent windows
- Two-way tailgate
- Power tailgate release

#### IN ADDITION TO (OR IN LIEU OF) THE STANDARD EQUIPMENT ALREADY LISTED ON CENTURY CUSTOM, EVERY CENTURY LIMITED SEDAN FEATURES:

### CENTURY DIMENSIONS: MM (IN.)

Wheelbase	2664 (104.9)	Height	1377 (54.2)
Track, front/rear	1492/1440 (58.7/56.7)	Curb weight: kg (lbs.)	1259 (2,776)**
Tire size	P185/75R-14	Head room, front/rear	980/973 (38.6/38.3)***
Wheel size (in.)	14 x 5.5	Leg room, front/rear	1069/912 (42.1/35.9)†
Brake type, front/rear	Disc/Drum	Shoulder room, front/rear	1420/1427 (55.9/56.2)
Fuel tank: litres (gals.)	59 (13.0)	Seating capacity	6‡
Length	4803 (189.1)*	Trunk capacity: litres (cu. ft.)	459 (16.2)†††
Width	1763 (69.4)		

\* 4849 (190.9), Wagon. \*\* 1326 (2,924), Wagon. \*\*\* 988 (38.9), Wagon. † 884 (34.8), Wagon. ‡ 8, Wagon. ††† 2107 (74.4) with both seats folded flat; 1178 (41.6) with 3rd seat folded flat, Wagon.

### CENTURY POWERTRAIN SPECIFICATIONS

Engine	2.5 Litre Tech IV	3300 V6
Displacement	2.5 Litres (151 cu. in.)	3.3 Litres (200 cu. in.)
Engine type	OHV I4	OHV V6
Brake HP @ RPM	110 @ 5200	160 @ 5200
Net torque (lbs.-ft.) @ RPM	135 @ 3200	185 @ 2000
Compression ratio	8.3:1	9.1:1
Fuel management, fuel-injected	Electronic	Multi Port
Availability	Standard (Custom Sedan)	Standard (Limited) optional (Custom Sedan)
Transaxle	3-speed automatic	4-speed automatic with overdrive
Suspension		
Front/Rear		MacPherson strut/coil spring

### CARGO AREA DIMENSIONS: MM (IN.)

Floor length from back of front seat to end of floor surface	1915 (75.4)
Floor length from back of second seat to end of floor surface	1153 (45.4)
Minimum distance between wheelhousings at floor level	930 (36.6)
Rear-end opening width at belt	1255 (49.4)
Maximum height of rear opening, tailgate open	729 (28.7)
Maximum cargo height	803 (31.6)



This elegant front-drive mid-size V6 Century Limited Wagon, shown here in White with available woodgrain vinyl applique, will take 8 to the country club, then just as easily haul over 2100 litres (74 cubic feet) of cargo anywhere you want to go!

### EXTERIOR FEATURES

- Additional bright mouldings
- Door edge guards
- 14" wire wheel covers with locks

### INTERIOR FEATURES

- Comfortilt steering wheel
- Intermittent wipers
- Electronic cruise control
- AM/FM stereo Delco ETR® radio with seek/scan, digital clock, auto-reverse cassette tape player and 6-speaker Concert Sound II system
- Illuminated visor vanity mirrors
- Power trunk release



Clarity is a virtue when it comes to providing information. Controls, too, are placed exactly where you'd want them, including a multi-function lever that includes the electronic cruise control, just left of the steering wheel. Shown here, the Century Limited instrument panel.

### EASY OPTION PACKAGES

The 1991 Centurys feature available EASY OPTION PACKAGES to help simplify the buying process. Choose the package containing the equipment you desire, then select from the accompanying list of individual options. Some restrictions apply. See your dealer for details.

OPTION DESCRIPTION	LIMITED SEDAN, WAGON			
	CUSTOM SEDAN	ISE	ISE	ISE
PACKAGE CODES	ISB	ISD	ISE	ISE
Automatic Power Antenna	-	-	X	X
Electronic Cruise Control	-	X	X	S
Dual Electric Outside Rearview Mirrors	-	-	X	X
Illuminated Visor Vanity Mirrors	X	X	X	S
Door Edge Guards	X	X	X	S
Power Door Locks	-	X	X	X
6-Way Power Driver's Seat Adjuster	-	-	X	X
Power Windows	-	X	X	X
AM/FM Stereo Delco ETR® Radio with Seek/Scan, Digital Clock and Auto-Reverse	-	X	X	S
Cassette Tape Player	-	X	X	S
Power Trunk Release (Sedan)	X	X	X	S
Comfortilt Steering Wheel	X	X	X	S
Intermittent Wipers	X	X	X	S

X = Included in Package.

- = Not in Package.

S = Standard Equipment.

### INDIVIDUAL OPTIONS

AVAILABILITY VARIES BY MODEL. SEE YOUR DEALER FOR DETAILS.

- 3300 V6 engine with Multi Port Fuel Injection (Custom)
- 4-speed automatic transmission with overdrive (Custom)
- 14" aluminum wheels (Limited)
- 14" wire wheel covers with locks (Custom)
- 14" painted styled steel wheels (Custom)
- Remote keyless entry system
- Woodgrain vinyl applique (Limited Wagon)
- Deck-lid luggage carrier (Custom, Limited Sedan)
- Rear tailgate window washer/wiper (Limited Wagon)

- Luxury cloth trim (Custom)
- Leather seating areas (Limited Sedan)
- Steering wheel touch controls for radio
- Electronic cruise control (Custom)
- AM/FM stereo Delco ETR® radio with seek/scan, digital clock and auto-reverse cassette tape player (Custom)
- AM stereo/FM stereo Delco ETR® radio with seek/scan, digital clock and compact disc (CD) player (Limited)
- Power windows (Limited)
- Power door locks (Custom)

### EXTERIOR COLOURS

Sterling Silver Metallic

Slate Gray Metallic

Light Sapphire Blue Metallic

Dark Sapphire Blue Metallic

White

Black

Camel Beige

Light Camel Metallic

Flame Red Metallic

Rosewood Metallic



You might shake your head in wonder - an optional Keyless Entry System? But wait 'til that first rainy evening and your arms are full of dry cleaning...



**SKYLARK** For the person with aspirations and plans for the future – why not the good taste of the Buick touch today? Buick again offers extended front-wheel drive choices – with two well made Custom models, coupe or sedan; a 3.3 L V6 powered Gran Sport Coupe (shown right, inset), with an “all-business” look of its own – and a V6 premium Luxury Edition Sedan. All with design lines that are clean, distinctive and pure Buick.

SKYLARK CUSTOM SEDAN SHOWN IN RUBY RED METALLIC ▼





Whether you are regarding the finery of the air conditioned Luxury Edition, the sporting proposition of Gran Sport or the sensible investment of a Custom, you are looking at an automobile that is comfortable and pleasurable. Handsome velour is in every Skylark and either a 4-way manual or 6-way power adjustable driver's seat is standard or available depending on series. Custom and Luxury series offer a split front seat with console; the Gran Sport, reclining buckets. A split-folding rear seatback allows for additional trunk access and the versatility of transporting long, oversize objects. While you'll find the expected list of standard equipment, Buick offers worthwhile option packages that can turn Skylark into a mini Park Avenue.

SKYLARK CUSTOM SPLIT  
FRONT SEAT WITH  
CONSOLE SHOWN IN  
GARNET RED ►



*Standard on coupes, this easy-entry feature allows the passenger-side front seat to slide forward with passenger door open, for easy entry/exit. Return of the seat to its previously set position is as simple.*





## SKYLARK standards/options

### BUICKS OFFERED IN THIS SERIES

MODEL	COUPE	SEDAN
Skylark Custom	•	•
Skylark Gran Sport	•	
Skylark Luxury Edition		•

### STANDARD EQUIPMENT

#### EVERY SKYLARK CUSTOM INCLUDES: CHASSIS/MECHANICAL

- Power rack-and-pinion steering
- Power front disc/rear drum brakes
- Engine block heater
- DynaRide® suspension
- All-season radial whitewall tires
- 14" styled steel wheels

#### EXTERIOR FEATURES

- Two-sided galvanized steel body panels
- Base coat/clear coat paint
- Composite tungsten halogen headlamps
- Automatic daytime running lamps
- Tinted glass
- Dual outside mirrors (left remote)
- Remote fuel filler door release

#### INTERIOR FEATURES

- Front split seatback with integral centre console and armrest
- Easy entry front passenger seat (Coupe)
- Trip odometer
- Comfortilt steering wheel with column mounted shifter
- AM/FM stereo Delco ETR® radio with seek/scan, digital clock and 4-speaker Concert Sound II system
- Front side-window defoggers
- Convenience group: includes under-hood and trunk lamps
- Passenger visor vanity mirror
- Carpeted front and rear floor mats
- Rear seat ventilation heat/air ducts
- Split-folding rear seatbacks
- Luggage compartment cargo net
- Electric rear window defogger

IN ADDITION TO (OR IN LIEU OF) THE STANDARD EQUIPMENT ALREADY LISTED ON SKYLARK CUSTOM, EVERY SKYLARK LUXURY EDITION FEATURES:

#### EXTERIOR FEATURES

- Two-tone paint
- Additional bright mouldings
- Formal full padded vinyl roof cover
- 14" wire wheel covers with locks

#### INTERIOR FEATURES

- 4-way manual driver's seat adjuster
- Intermittent wipers
- Electronic cruise control

- Electronic air conditioning
- AM/FM stereo Delco ETR® radio with seek/scan, digital clock and auto-reverse cassette tape player
- Front and rear courtesy lamps

IN ADDITION TO (OR IN LIEU OF) THE STANDARD EQUIPMENT ALREADY LISTED ON SKYLARK CUSTOM, EVERY SKYLARK GRAN SPORT FEATURES:

#### CHASSIS/MECHANICAL

- Gran Touring suspension
- 14" performance blackwall tires
- 14" specific aluminum wheels

#### EXTERIOR FEATURES:

- Front air dam
- Aero rocker panels
- Black-out exterior treatment

#### INTERIOR FEATURES

- Reclining bucket seats with floor console and shifter
- 4-way manual driver's seat adjuster
- Leather-wrapped steering wheel
- Intermittent wipers
- Electronic cruise control
- AM/FM stereo Delco ETR® radio with seek/scan, digital clock, and auto-reverse cassette tape player

#### SKYLARK DIMENSIONS: MM (IN.)

	COUPE	SEDAN		COUPE	SEDAN
Wheelbase	2626 (103.4)	2626 (103.4)	Height	1323 (52.1)	1323 (52.1)
Track, front/rear	1412/1402 (55.6/55.2)	1412/1402 (55.6/55.2)	Curb weight: kg (lbs.)	1225 (2,700)	1225 (2,700)
Tire size*	P185/75R-14	P185/75R-14	Head room, front/rear	958/942 (37.7/37.1)	958/942 (37.7/37.1)
Wheel size (in.)	14 x 6	14 x 6	Leg room, front/rear	1090/871 (42.9/34.3)	1090/871 (42.9/34.3)
Brake type, front/rear	Disc/Drum	Disc/Drum	Shoulder room, front/rear	1387/1402 (54.6/55.2)	1379/1374 (54.3/54.1)
Fuel tank: litres (gals.)	51.5 (11.3)	51.5 (11.3)	Seating capacity	5	5
Length	4577 (180.2)	4577 (180.2)	Trunk capacity: litres (cu. ft.)	379 (13.4)	379 (13.4)
Width	1692 (66.6)	1692 (66.6)			

\* P215/60R-14, Gran Sport.

#### SKYLARK POWERTRAIN SPECIFICATIONS

Engine	2.5 Litre TECH IV	Quad 4	3300 V6
Displacement	2.5 Litres (151 cu. in.)	2.3 Litres (140 cu. in.)	3.3 Litres (200 cu. in.)
Engine type	OHV I4	DOHC I4	OHV V6
Brake HP @ RPM	110 @ 5200	160 @ 5600	160 @ 5200
Net torque (lbs.-ft.) @ RPM	135 @ 3200	155 @ 5200	185 @ 2000
Compression ratio	8.3:1	9.5:1	9.1:1
Fuel management, fuel-injected availability	Electronic Standard on Custom	Multi Port Optional on all models	Multi Port Standard on Luxury Edition and Gran Sport
Transaxle	3-speed automatic	3-speed automatic	3-speed automatic
Suspension			
Front/Rear			MacPherson strut/Coil spring



This Buick Luxury Edition Sedan offers you an exclusive closed-in rear quarter look with full padded top, electronic air conditioning, wire wheel discs and smooth computer-engineered DynaRide® suspension. Just for starters...



Skylark's instrument panel features a convenient column shifter and analogue instrumentation placed beside controls for flow-through ventilation and stereo radio.

#### EASY OPTION PACKAGES

The 1991 Skylarks feature available EASY OPTION PACKAGES to help simplify the buying process. Choose the package containing the equipment you desire, then select from the accompanying list of individual options. Some restrictions apply. See your dealer for details.

OPTION DESCRIPTION	SKYLARK CUSTOM	SKYLARK GRAN SPORT	SKYLARK LUXURY EDITION
PACKAGE CODES	ISC	ISD	ISC
Electronic Air Conditioning	-	-	S
Electronic Cruise Control	X	S	S
Inside Rearview Mirror with Dual Reading Lamps	-	-	X
Illuminated Passenger Visor	-	-	X
Vanity Mirror	-	-	X
Extra Wide Rocker Panel	-	-	-
Mouldings	-	X	S
Power Door Locks	-	X	X
Power Windows with "express down" driver's feature	-	X	X
Automatic Power Antenna	-	X	X
Power Trunk Release	-	-	X
6-Way Power Driver's Seat Adjuster	-	-	X
AM/FM Stereo Delco ETR® Radio with Seek/Scan, Digital Clock and Auto-Reverse Cassette Tape Player	X	X	S
4-Way Manual Driver's Seat Adjuster	X	-	S
14" Wire Wheel Covers with Locks	X	X	S
Intermittent Wipers	X	X	S

X = Option Included in Package. - = Option Not in Package. S = Standard Equipment.

#### INDIVIDUAL OPTIONS

AVAILABILITY VARIES BY MODEL. SEE YOUR DEALER FOR DETAILS.

- 2.3 Litre Quad 4 with Multi Port Fuel Injection
- 3300 V6 with Multi Port Fuel Injection (Custom)
- Gran Touring Suspension Package: includes special suspension components, leather-wrapped steering wheel, P215/60R-14 all-season blackwall tires and 14" aluminum wheels (Custom Coupe)

- 14" aluminum wheels including P195/70R-14 all-season blackwall tires (N/A Luxury Edition)
- 14" wire wheel covers with locks (Custom)
- Designer Accent two-tone paint (Custom)
- Deck-lid luggage carrier (Custom, Luxury Edition)
- Reclining front bucket seats with floor console and shifter (Custom, Luxury Edition)
- Electronic air conditioning (Custom, Gran Sport)

#### EXTERIOR COLOURS

Sterling Silver Metallic

Ice Blue Metallic\*

Sapphire Blue Metallic\*

Arctic White

Black†

Light Camel Metallic\*

Ruby Red Metallic\*

Dark Garnet Red Metallic\*

Gunmetal Gray Metallic

\* N/A on Gran Sport.

† Only solid tone paint available on Luxury Edition.

- AM/FM stereo Delco ETR® radio with seek/scan, digital clock and auto-reverse cassette tape player

DESIGNER ACCENT TWO-TONE PAINT (STANDARD ON LUXURY EDITION, AVAILABLE ON CUSTOM)

Sterling Silver Metallic/Gunmetal Gray Metallic

Ice Blue Metallic/Sapphire Blue Metallic

Black/Sterling Silver Metallic

Ruby Red Metallic/Sterling Silver Metallic



## ROADMASTER ESTATE WAGON

Every station wagon should be as beautiful, as comfortable, as superlative – practical – and as capable as the new Roadmaster Estate. Beauty speaks for itself – for here is the flagship of the boulevard.

5.0 Litre V8 power, rear-wheel drive, strong full-perimeter frame, anti-lock braking system (ABS), eight-passenger seating and – when properly equipped – towing capacity of up to 2268 kg or 5,000 lbs. Read on ...

ROADMASTER ESTATE WAGON SHOWN IN WHITE ▼





Unless you look back over your shoulder, there is nothing to remind you that this is a wagon. Deep, rich cloth velour seating area is standard (leather is available) and a divided front seat with dual recliners includes a fold-down centre armrest. There are numerous power assists, air conditioning, driver's side air bag, tachometer – and Buick touches abound. Like a fold-down third seat in serviceable vinyl, rear compartment assist handles, lockable rear storage areas and in-door storage pockets in side doors. But suppose you need a real “hauling” wagon? Would over 2600 litres (92 cubic feet) be enough cargo space? Could you image a vehicle with a two-way rear door that drops down to simplify loading or opens from the side to accommodate awkward or bulky items? Would you find a use for an adjustable roof luggage carrier? If so, you might want to put some trust into Roadmaster Estate.

ROADMASTER ESTATE  
WAGON INTERIOR SHOWN  
WITH OPTIONAL LEATHER  
SEATING AREAS IN CAMEL ►



Hide valuables under lock and key in the locking storage compartment of the Estate Wagon.





## ROADMASTER ESTATE WAGON *standards/options*

### BUICKS OFFERED IN THIS SERIES

MODEL	WAGON
Roadmaster Estate	•

### STANDARD EQUIPMENT

#### EVERY ROADMASTER ESTATE WAGON INCLUDES:

##### CHASSIS/MECHANICAL

- Power steering
- Power front disc/rear drum brakes
- Anti-lock braking system (ABS)
- Engine block heater
- Heavy-duty suspension
- All-season radial whitewall tires
- 15" aluminum wheels

##### EXTERIOR FEATURES

- Base coat/clear coat paint
- Composite tungsten halogen headlamps
- Automatic daytime running lamps w/Twilight Sentinel
- Tinted glass
- Dual outside mirrors (left remote)
- Automatic power antenna
- Woodgrain vinyl applique
- Vista Roof with tinted glass
- Roof luggage carrier
- Rear quarter vent windows
- Rear window air deflector
- Rear window wiper and washer

##### INTERIOR FEATURES

- 55/45 divided front seat with recliners and front seat storage armrest
- Driver's side Supplemental Inflatable Restraint system (air bag)
- Full analogue instrumentation: includes tachometer with engine oil level, low coolant, low fuel and low windshield fluid indicators
- Tailgate ajar indicator
- Comfortilt steering wheel
- Intermittent wipers
- Electronic cruise control
- Air conditioning
- AM/FM stereo Delco ETR® radio with seek/scan, digital clock, auto-reverse cassette tape player and 4-speaker system
- Front side-window defoggers
- Power windows with "express down" driver's feature
- Power door locks with tailgate release
- Illuminated passenger visor vanity mirror
- Front and rear in-door map pockets
- Carpeted front and rear floor mats
- Rear facing vinyl third seat
- Lockable rear stowage compartment
- Dual function luggage compartment cargo net
- Rear assist handles with cargo lamp
- Electric rear window defogger
- Two-way tailgate

### ROADMASTER ESTATE WAGON DIMENSIONS: MM (IN.)

Wheelbase	2945 (115.9)	Height	1527 (60.1)
Track, front/rear	1577/1628 (62.2/64.1)	Curb weight: kg (lbs.)	2007 (4,425)
Tire size	P225/75R-15	Head room, front/rear	1008/1006 (39.7/39.6)
Wheel size (in.)	15 x 7	Leg room, front/rear	1072/965 (42.2/38.0)
Brake type, front/rear	Disc/Drum	Shoulder room, front/rear	1610/1613 (63.4/63.5)
Fuel tank: litres (gals.)	83 (22.0)	Seating capacity	8
Length	5530 (217.7)	Cargo capacity: litres (cu. ft.)	2616 (92.4)*
Width	2029 (79.9)		

\* With both rear seats folded flat.

† 1549 (54.7) with third seat folded flat.

### ROADMASTER ESTATE WAGON POWERTRAIN SPECIFICATIONS

Engine	5.0 Litre V8
Displacement	5.0 Lite (305 cu. in.)
Engine type	OHV V8
Brake HP @ RPM	170 @ 4200
Net torque (lbs.-ft.) @ RPM	255 @ 2400
Compression ratio	9.3:1
Fuel management, fuel-injected	Electronic
Transaxle	4-speed automatic with overdrive
Suspension	
Front/Rear	Independent coil spring/Four link spring

### CARGO AREA DIMENSIONS: MM (IN.)

Floor length from back of front seat to end of floor surface	2146 (84.5)
Floor length from back of second seat to end of floor surface	1397 (55.0)
Minimum distance between wheel housings at floor level	1237 (48.7)
Rear-end opening width at belt	1331 (52.4)
Maximum height of rear opening, tailgate open	688 (27.1)
Maximum cargo height	755 (29.7)

### EASY OPTION PACKAGES

The 1991 Roadmaster Estate Wagon features available EASY OPTION PACKAGES to help simplify the buying process. Choose the package containing the equipment you desire, then select from the accompanying list of individual options. Some restrictions apply. See your dealer for details.

OPTION DESCRIPTION	ROADMASTER ESTATE WAGON	
PACKAGE CODES	ISD	ISE
Electronic Touch Climate Control	X	X
Rear Cargo Security Cover	X	X
Cornering Lamps	-	X
Front Door Courtesy & Warning Lamps	X	X
Inside Rearview Mirror with Dual Reading Lamps & Compass	X	X
Dual Remote Outside Mirrors with Electric Defogger on Driver's Mirror	-	X
Illuminated Visor Vanity Mirror	X	X
6-Way Power Driver's Seat Adjuster	X	X
6-Way Power Passenger Seat Adjuster	-	X
Remote Keyless Entry System	-	X

X = Included in Package. - = Not in Package.



The vinyl third seat brings passenger capacity up to eight, or folds out of the way for cargo room. For maximum cargo capacity of 2616 litres (92.4 cubic feet), the second seat folds flat.



A Supplemental Inflatable Restraint system (air bag) is built into the Comfortilt steering wheel for your safety. And to this logical arrangement of controls and switches which includes full analogue instrumentation for clarity, there is only one thing you can add - the superb sound of a genuine Delco compact disc (CD) player.



Roadmaster Estate Wagon shown with standard woodgrain vinyl applique removed (a no-cost credit option). A tinted glass Vista Roof panel located over the second seat, is made of a specially treated glass to reduce the sun load.

### EXTERIOR COLOURS

Black Sapphire Metallic	
White	
Light Camel	
Dark Maple Red Metallic	
Light Sapphire Blue Metallic	
Gunmetal Gray Metallic	

### INDIVIDUAL OPTIONS

AVAILABILITY VARIES BY MODEL. SEE YOUR DEALER FOR DETAILS.

- Limited slip differential
- Trailering provisions: includes automatic level control suspension, special axle ratio and heavy duty cooling systems
- 15" wire wheel covers with locks
- Woodgrain vinyl applique\* (delete option)
- Leather seating areas

- Third seat\* (delete option)
- AM stereo/FM stereo Delco ETR® radio with seek/scan, digital clock, graphic equalizer and auto-reverse cassette tape player
- AM stereo/FM stereo Delco ETR® radio with seek/scan, digital clock, graphic equalizer, compact disc (CD) player

\* Roadmaster Estate may be ordered without woodgrain vinyl applique or the third seat, as a credit option.



The re-birth of a classic - Roadmaster Sedan. Everything the original was - and more. 5.7 Litre V8 power. Rear-wheel drive. Anti-lock brakes (ABS). Computer-tuned DynaRide® suspension. Full 6-passenger comfort. A premium 1992 automobile of unmistakable presence joining the Buick family, spring 1991.



## ADDITIONAL INFORMATION / SAFETY FEATURES

### OCCUPANT PROTECTION:

Supplemental Inflatable Restraint, driver only (Reatta, Riviera, Park Avenue, Park Avenue Ultra, and Roadmaster Estate), with manual lap/shoulder safety belts for driver and right front passenger; driver's side includes visible and/or audible warning system • Manual lap/shoulder safety belts, outboard rear seat positions • Manual lap safety belts, centre front/rear seat positions, where applicable • Child restraint seat tether anchorages and hardware • Energy-absorbing steering column • Energy-absorbing instrument panel • Energy-absorbing front seatback tops • Interlocking door latches • Side-guard door beam • Passenger-guard inside door lock handles • Inertia-locking, folding front seatbacks, two-door models • Safety armrests • Head restraints, driver and right front passenger (adjustable or integral) • Break-away inside rearview mirrors • Security door locks and door retention components

### ACCIDENT AVOIDANCE:

Automatic daytime running lamps • Side marker lamps and reflectors • Parking lamps that illuminate with headlamps • Four-way hazard warning flasher • Backup lamps • Centre high-mounted stop lamp • Directional signal control with lane change feature • Windshield defroster, washer and multi-speed speed wipers • Inside rearview mirror • Outside left and right rearview mirrors • Brake system with dual master cylinder and warning light • Anti-lock braking system (ABS), standard on Reatta, Riviera, Park Avenue, Park Avenue Ultra and is available on LeSabre, LeSabre Limited, Regal Custom and Regal Limited • Starter safety switch • Dual-action hood latch system • Low-glare finish on inside windshield mouldings, wiper arms and blades, metallic steering wheel surfaces • Illuminated heater and defroster controls • Illuminated windshield wiper and washer controls (when located on instrument panel) • Tires with built-in tread-wear indicators.

### THEFT DETERRENCE:

Audible reminder for ignition key removal • Theft-deterrent steering column lock • Visible vehicle identification number • PASS-Key® (Personalized Automotive Security System) standard on Reatta, Riviera, Park Avenue and Park Avenue Ultra • Theft-deterrent key system (separate ignition key) • Remote inside hood release

### A WORD ABOUT CORROSION PROTECTION

Your 1991 GM passenger car was designed and built to resist corrosion. It comes with a standard 6-year/160,000 kilometre corrosion perforation warranty (whichever comes first). Application of additional

### FOR YOUR PROTECTION

General Motors stands behind your new GM car with the GM TOTAL™ Warranty.

WARRANTY	COVERAGE PERIOD
• Complete vehicle (including tires)	1-yr./20,000 km*
• Complete vehicle less \$100 deductible after 1st year or 20,000 km* per repair visit (including tires)	3-yr./80,000 km*
• Corrosion (rust-through) (deductible does not apply)	6-yr./160,000 km*
• Emission Control System (deductible does not apply)	5-yr./80,000 km*
• Air Conditioning (deductible does not apply) on sealed refrigerant portion. All other parts - less \$100 deductible after 1st year per repair visit up to 3 years/80,000 km*	1-year regardless of kilometres
• Delco Battery (pro rate adjusted price after 1-year/20,000 km*), up to a maximum of 3 years	1-yr./20,000 km*
• Supplemental Inflatable Restraint system (air bag) (deductible does not apply)	3-years regardless of kilometres

\* WHICHEVER COMES FIRST.

rust-inhibiting materials is not necessary or required under the 6-year/160,000 kilometre corrosion coverage. For more details on this specific warranty, ask your Buick dealer.

### GM PROTECTION PLAN TOTAL "PLUS"™

Why not take a good thing and make it better. Your GM TOTAL™ Warranty provides superb coverage. The available GM Protection Plan Total Plus™ is just more of a good thing. There are many extended service contracts available on the market today, but there is only ONE that comes from General Motors. The General Motors Protection Plan is part of the GM family and provides coverage for up to 6 years or 150,000 kilometres (whichever comes first).

The GM Protection Plan provides additional protection during and after the new vehicle limited warranties. Ask your General Motors dealer for details and information about the genuine GM Protection Plan.

### ALL YOUR FINANCING CONVENIENTLY HANDLED UNDER ONE ROOF

All your financing conveniently handled under one roof

The good feeling that comes when you buy a new Buick can be enhanced when it comes to making financial arrangements. Which is why so many people finance with General Motors Acceptance Corporation. With GMAC it's done right in the showroom. Terms are tailor-made to suit your personal needs. You can choose your own monthly payment date. And the rates are as friendly as can be.

So when the time comes, just tell us "I want GMAC". We'll take it from there while you relax.

### SMARTLEASE

If you'd rather not tie up a lot of your cash by purchasing a new vehicle, then leasing is for you. By leasing, you free up your cash so you can spend it on other priorities. Here's how:

1. **NO BANK LOAN.** Because you're not buying the vehicle - you're leasing it - it's not necessary to borrow money.
2. **NO LARGE DOWN PAYMENT.** When you lease, you're paying only the first month's installment plus a security deposit. On approved credit.
3. **NO HIGH MONTHLY PAYMENTS.** SmartLease payments are based on that portion of your vehicle's value, that you use during the lease period. Paying for only a portion of the value, can keep your payments low.
4. **NO RESALE WORRIES.** At the end of your lease, just return your car to your Buick dealer. You may have the option of buying it, or you can take a lease out on another brand new Buick.

### GM SMARTLEASE. THE SMART ALTERNATIVE TO BUYING.

For more information about SmartLease please call this toll-free nationwide telephone number: 1-800-GMLEASE or see your Buick dealer for complete details.

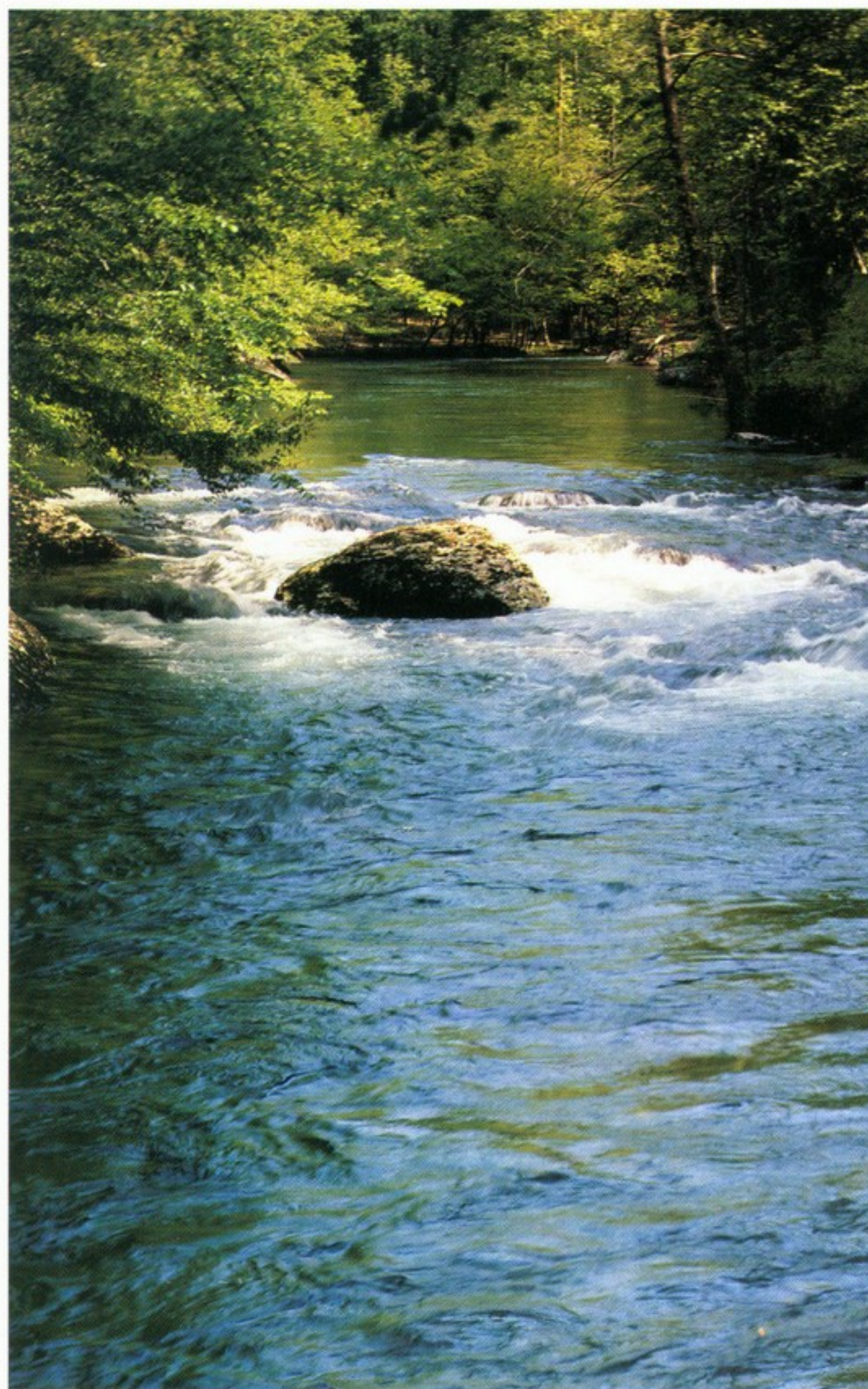
### A WORD ABOUT ENGINES

Buicks are equipped with engines produced by facilities operated by GM car groups, subsidiaries or affiliated companies worldwide.

### TRAILER TOWING

Check with your Buick dealer for Trailer Towing recommendations.

FRONT SEAT BELT SYSTEM ILLUSTRATED IN THIS BROCHURE DIFFERS IN CANADA. INSTRUMENTS SHOWN THROUGHOUT THIS BROCHURE ARE METRIC IN CANADA.



### A WORD ABOUT THIS BROCHURE

The vehicles described in this brochure incorporate components produced by General Motors of Canada Limited and related companies and suppliers. During manufacturing, different components than initially scheduled may be used.

All illustrations and specifications contained in this brochure are based on the latest production information at time of publication approval. The right is reserved to make changes at any time, without notice, in prices, colours, materials, equipment, specifications and models, and to discontinue models. Some of the equipment shown or described throughout this brochure is available at extra cost, or

can be ordered in conjunction with the other optional equipment. Some options may not be available when your vehicle is built. Check with your dealer for complete information.

\*GM, the GM emblem, BUICK, the BUICK emblem, SKYLARK, CENTURY, REGAL, LESABRE, PARK AVENUE, ROADMASTER, RIVIERA, REATTA, DELCO ETR, TECH IV, QUAD 4, DYNARIDE and the TOTAL emblem are all trademarks of General Motors Corporation and/or General Motors of Canada Limited. GMAC and SMARTLEASE are trademarks of General Motors Acceptance Corporation. PASS-Key is a trademark of Delco Electronics Corporation.

### GM CANADA ... CONTRIBUTING TO A CLEANER CANADA

As the largest automotive manufacturer in Canada, we share the objective of ensuring cleaner land, water and air for future generations. General Motors of Canada Limited is committed to sustainable development with product enhancements and plant improvements to achieve further reductions in emissions.

GM was the first major automotive manufacturer to introduce a full line of automobiles operating entirely on unleaded fuel. We pioneered the use of catalytic converters to reduce vehicle emissions. Current vehicles utilize emission control systems that have reduced emissions 90% on average from uncontrolled levels. As newer cars replace older ones on our roads, we expect a substantial drop in tailpipe emissions.

General Motors of Canada Limited supports the use of properly blended oxygenated fuels. Those motor gasolines that contain low levels of oxygenates not only improve road octane levels, but may reduce carbon monoxide emissions by as much as an additional 20%.

We are continuing to pursue new technologies and new products to enhance our environmental commitment. You can help, too. Always use unleaded gasolines or the recommended oxygenated fuels as described in the owner's manual. Have your vehicle serviced regularly to ensure that it is in top running order. Maintain your tires at the recommended pressure. If each one of us takes these small steps, the overall result will be a cleaner Canada.

PRINTED IN CANADA, AUGUST 1990  
© 1990, GENERAL MOTORS OF CANADA LIMITED





As a leader in  
environmental  
initiatives, General  
Motors of Canada  
shares your concern for  
our natural resources. This  
brochure is printed on  
**recycled/recyclable paper** using  
**vegetable based inks**. For each  
tree used in producing this brochure,  
another tree will be planted. This is yet  
another step General Motors of Canada has  
made to improve our Canadian environment.  
**Thank you for recycling this brochure.**

