

1997 LE SABRE

by Buick



PEACE OF MIND

NATURAL EVOLUTION OF A FAMILY FAVORITE

LIMITED SEDAN

How

can a completely restyled LeSabre still look, unmistakably, like a LeSabre? It depends on who is looking at it. The way previous LeSabre owners like the Abruzzos see it, it's the natural refinement and evolution of their favorite automobile.

They welcome change, but not for its own sake.

Purposeful luxury, generous comfort, outstanding premium value and a solid reputation for quality and dependability have made the LeSabre what it is — the best-selling full-sized car in America.*

To the uninitiated, the 1997 LeSabre looks like an elegant statement of style and power — which, of course, it is. But it is so much more. Otherwise, how could it engender the peace of mind and loyalty that attract generations of family ownership?



Frank and Debbie Abruzzo, their two sons Nick and Joe, Schaumburg, Illinois — and their 1994 LeSabre.

"We've always had Buicks.

We appreciate the quality service received from the Buick people."

*Based on 1992-1995 model year sales.



LIMITED SEDAN



LESABRE AS A HOME ADDITION

*F*amilies like the Djerfs will settle for no less than the comforts of home when they take to the highways and streets. For them, the 1997 LeSabre is a natural extension of their residence. The meaningful luxury of a roomy, six-passenger cabin is a LeSabre feature that has helped make it the best-selling full-sized car



LeSabre's spacious cabin was designed to seat six adults in generous comfort, with nonintrusive appointments.



Compare leg room — LeSabre gives you a leggy 42.6 in. in front, 40.4 in. in back. Room to stretch and enjoy.



The roomy LeSabre trunk provides over 17 cu. ft. to carry a large family's cargo or supply of groceries.



for four years in a row. LeSabre's comfortably contoured seating, exceptionally smooth ride and rich assortment of features make driving it, and riding in it, a welcome pleasure — no wonder LeSabre is Buick's best seller.

Russell and Karen Djerf and their daughters Erika, Natalie and Dana, Quincy, Massachusetts — and their 1993 LeSabre. "We needed plenty of room — it's a comfortable car and we love it. LeSabre has it all."



COMFORT ZONE

THE LUXURY OF COMFORTABLE CHOICES

*F*amilies have been sold on LeSabre's luxurious roominess and comfort for generations. The Stephens family loves their 1996 LeSabre. The 1997 LeSabre has been refined to suit them, and others like them, even more. A special Seat Comfort Team, including a physical therapist, seating engineers, and short



and tall men and women, put over 100,000 miles on the odometer. Real miles on real roads of all kinds. This has led to the most advanced, orthopedically sensitive seating Buick has ever offered. The 1997 LeSabre offers what may be the most comfortable seats ever to shorten a cross-country trip.

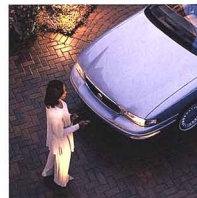
Willie and Elizabeth Stephens, and their daughter Alicia, Chattanooga, Tennessee — and their 1996 LeSabre. "Saying it's a nice family car doesn't do it justice. Handles beautifully, plenty of leg room, very comfortable."



Over 100,000 miles of ride-and-drive research helped the Buick Seat Comfort team to design comfortable seating that fits 96% of all U.S. drivers.



The available remote keyless entry locks and unlocks the car, turns on lights, opens trunk and activates the instant alarm feature.



The perimeter lighting option can light up the area around your LeSabre for up to 15 seconds, for added security.



AMENITIES



THE CHOICE OF MORE FAMILIES

It has been said LeSabre's purpose is to please America, six at a time — this idea gains even more credibility in 1997. LeSabre's gracious six-passenger cabin features a wraparound instrument panel engineered to supply easily accessible control and legible information. The generously comfortable



seating is nonconfining throughout. From advanced audio systems to sophisticated temperature controls, LeSabre is designed to be a favorite of families like the Reeds who have owned them since 1967.

*Myrtle Lee and Ed Reed, Louisburg, Kansas
— and their 1995 LeSabre.
"We've never had any trouble. Our LeSabre feels safe, comfortable
and smooth — a wonderful ride. And the features"*



*Standard on Limited,
dual automatic
ConforTemp climate
control allows driver
and front-seat passenger
individual temperature
control.*



*The Buick family
of radios and sound
options include a dual
cassette/CD player with
a Concert Sound II
speaker system.*



*Electrochromatic
driver and rearview
mirrors (optional) dim
automatically reducing
headlamp glare up
to 94%.*

CUSTOM SEDAN





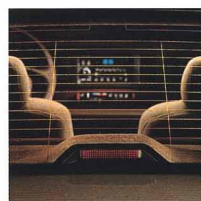
LESABRE SETS HIGH STANDARDS

award-winning LeSabres have always offered an abundance of family-pleasing features. The Duncan family-to-be has their favorites. The driver's peace of mind is inspired by the ergonomically refined controls, quick response and power steering. Passengers relax in the acoustic calm of the sealed



cabin. All occupants enjoy the legendary smoothness of DynaRide® suspension. LeSabre's safety, comfort and convenience features please Julie, Gerry and families nationwide.

Julie Voll and her fiancé, Gerry Duncan, Foster City, California — and her 1995 LeSabre, her third Buick. "It's the most comfortable car I've ever sat in. And it's beautiful — we love the styling. And the room — we take a lot of gear with us."



LeSabre's integrated backlight antenna eliminates an upright aerial, enhancing the sleek aerodynamics.



Door-mounted controls are within easy reach of the driver, and include passenger power window lockout protection.



Another handy feature of the door-mounted power window control is the express-down driver window.

SAFETY FIRST — A FAMILY PRIORITY

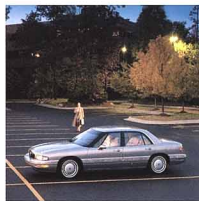
*S*afety is a Buick family priority. And it's high on Sally Dixon's list because of her children. Safety is a reason LeSabre attracts U.S. families in growing numbers. Standard features like dual airbags, anti-lock brakes, steel safety cage body unit and the ability to set off the available instant alarm



Steel side door beams help protect occupants and are part of LeSabre's commitment to safety and peace of mind.



Thanks to the LeSabre feature of Buick PASS Key™ II theft-deterrent system, only your key can start your LeSabre.



In an emergency, you can set off the available, attention-drawing instant alarm with a touch of the key fob.



with a touch of the key fob, appeal to her and all families concerned with safety. Such peace of mind makes it a safe bet the 1997 LeSabre will be more popular than ever.

*Sally Dixon, son Jacob, sister Virginia Hannah, and father Melvin Burns, Jr., Cary, North Carolina — and their LeSabres.
"We had such success with it, Dad got one, too — then Virginia. With four middle schoolers, two saves, a coronet and a bass clarinet and bags — safety and room sold us on LeSabre."*

SAFE ASSUMPTIONS



PROVEN STRENGTHS

LESABRE TURNS POWER TO PLEASURE



he power to please American families like the Percells is a LeSabre trait. Its impressive Series II 3800 V6 powerplant was recently judged one of the top 10 engines in the world.* Though it's one of the industry's most sophisticated engines, the Percells aren't as interested in the technical aspects as they



Anti-lock brakes help you maintain steering control and help prevent skidding while braking on most slippery surfaces.



Legendary DynaRide® suspension provides a smooth, comfortable, easily controlled ride.



The available Gran Touring Package includes 16-inch aluminum wheels, blackwall tires and a firmer feeling suspension.



are in the smooth, abundant power for acceleration or effortless passing on the highway. Peace of mind can be powerfully enjoyable.

*Source: Ward's Auto World, 1995.

John and Maureen Percell, Indianapolis, Indiana
— and their 1992 LeSabre.

"It's a car we can be proud of. Reliability, price, styling, a very good record, comfort — the perfect choice for us, for family and business."

3800
SERIES II

STANDARD AND AVAILABLE FEATURES*



LeSabre Custom Sedan



LeSabre Limited Sedan

Mechanical	(S) standard; (A) available	Custom	Limited
Battery - Delco Freedom II Plus		S	S
Brakes - anti-lock, power front disc/rear drum		S	S
Drive - front-wheel		S	S
Engine - 3800 SFI Series II V6		S	S
Exhaust system - stainless steel		S	S
Multifunction control lever - turn signal, headlamp high/low beam, windshield wiper/washer controls		S	S
Security locks - rear door, child		S	S
Steering - power rack-and-pinion		S	S
Suspension - DynaRide®		S	S
Suspension - front, independent MacPherson strut		S	S
Suspension - rear, independent		S	S
Suspension - Gran Touring (includes automatic level control)		A	A
Theft-deterrent system - PASS-Key® II		S	S
Traction control system		A	A
Transmission - electronically controlled four-speed automatic with overdrive		S	S
Trip odometer		S	S
Wipers - two-speed with low-speed delay feature		S	S
Interior			
Air bags - driver and front-seat passenger		S	S
Supplemental Restraint System (SRS)		S	S
Air conditioning - CFC-free		S	S
Air conditioning - front dual automatic ComforTemp climate control		—	S
Air conditioning - rear-seat ComforTemp		—	S
Armrest - front-seat storage with dual cup holders		S	S
Armrest - rear center fold-down		—	S
Carpet savers - front and rear		A	S
Defogger - electric, rear window		S	S
Defogger - front and side-window outlets		S	S
Door locks - memory with lockout protection and delayed locking		A	S
Door locks - power with lockout protection		—	S
Head restraints - adjustable, front-seat		S	S
Instrumentation - backlit analog cluster with trip odometer		S	—
Instrumentation - analog gauge cluster (includes tachometer, voltage, temperature and oil pressure gauges; low-fuel indicator; oil level and oil life monitors)		A	S
Lights - ashtray, front and rear-door-operated dome, trunk, engine compartment, glove box and instrument panel courtesy		S	—
Recliners - manual seatback, driver and passenger		S	S
Safety belts - front-seat lap/shoulder belt system with front shoulder belt comfort adjuster		S	S
Safety belts - rear-seat lap/shoulder with child comfort guide		S	S
Seat - six-way power, driver and passenger		A	S
Seats - cloth S545 with front-seat storage armrest, dual cup holders		A	A
Seats - leather/Vinyl S545 with front-seat storage armrest		S	S
Steering column - TILT-WHEEL™ adjustable		A	S
Steering wheel - deluxe (with SRS**)		S	S
Sunshades - extendable, supplemental, front		S	S
Trunk convenience net		A	S
Trunk lock release - electric, remote		A	S
Exterior			
Bumper protective moldings - front and rear		S	S
Fuel cap - tethered		S	S
Glass - Solar-Ray® solar-control windshield		S	S
Headlamp control - Twilight Sentinel®		A	S
Mirrors, outside rearview - deluxe, body-color, left, right manual		S	—
Mirrors, outside rearview - deluxe, body-color, electric, left and right remote		A	S
Moldings - body-color, body-side with protective strips		—	S
Moldings - black, body-side		—	S
Moldings - wheel opening, belt reveal and roof drip		S	S
Stripes - accent		A	S
Tires - P205/70R15 steel-belted, radial-ply, all-season blackwall		S	A
Tires - P205/70R15 steel-belted, radial-ply, all-season whitewall		A	S
Tires - P215/60R16 Eagle GA blackwall		A	A

Continued	Custom	Limited
A) Wheelcovers - 15" deluxe	S	—
B) Wheels - 15" aluminum	A	S
C) Wheelcovers - 15" custom, locking, wire	A	A
D) Wheels - 16" aluminum	A	A
Windows - power with driver "express down" and "passenger lockout"	S	S

Convenience Plus Features
 Battery Run-down Protection; delayed locking; delayed entry lighting; delayed exit lighting; lockout protection; reminder tones for ignition key; headlamps "on," turn signal "on" and parking brake "on"; theater dimming

PERSONAL CHOICE FEATURES	Custom	Limited
Remote keyless entry - with individually programmable transmitter	A	S
Instant alarm	A	S
Perimeter lighting	A	S
Security feedback	A	S

AUDIO SYSTEMS	Custom	Limited
Antenna - rear window	S	S
Radio - ETR® AM-FM stereo with seek/scan and clock	S	—
Radio - ETR® AM-FM stereo with seek/scan, cassette player with auto reverse and clock	A	S
Radio - ETR® AM-FM stereo with seek/scan, cassette player with auto reverse and search/repeat, automatic tone control and clock; includes steering wheel radio controls	A	A
Radio - ETR® AM-FM stereo with compact disc player, automatic tone control, seek/scan and clock; includes steering wheel radio controls	A	A
Radio - ETR® AM-FM stereo with compact disc player, automatic tone control and clock; includes steering wheel radio controls	A	A
Speakers - Concert Sound II	A	S
Speakers - dual, front and rear extended range	S	—

*Partial listing only - see your Buick dealer for complete lists and details.

**Supplemental Restraint System.

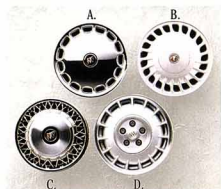
OPTION PACKAGE EQUIPMENT	Custom	Limited
(SD) Luxury Package; (SE) Prestige Package	SD	SE
Carpet savers - front and rear	■	■
Cruise control - electronic	■	■
Door edge guards - body color	■	■
Door locks - memory, automatic, programmable with lockout protection and delayed locking	■	■
Instrumentation - analog gauge cluster (includes tachometer, voltage, temperature and oil pressure gauges; low-fuel indicator; oil level and oil life monitors)	■	■
Lamps - cornering	■	■
Lighting package, headliner - includes map lights on inside rearview mirror, and driver and passenger lighted visor vanity mirrors	■	■
Mirror, outside rearview - left, automatic dimming	■	■
Mirrors, outside rearview - deluxe, body-color, electric, left and right remote	■	■
Radio - ETR® AM-FM stereo with seek/scan, cassette player and clock	■	■
Radio - ETR® AM-FM stereo with seek/scan, cassette player with auto reverse and search/repeat, automatic tone control and clock; includes steering wheel radio controls	■	■
Remote keyless entry - includes instant alarm, perimeter lighting, security feedback and individually programmable transmitters	■	■
Seat - six-way power, driver	■	■
Speakers - Concert Sound II	■	■
Stripes - automatic level control	■	■
Suspension - dynamic level control	■	■
Theft-deterrent system - with alarm and starter interrupt; includes central unlocking	■	■
Tires - P205/70R15 steel-belted, radial-ply, all-season whitewall	■	■
Trunk convenience net	■	■
Trunk lock release - electric, remote	■	■
Wheels - 15" aluminum	■	■

SPECIFICATIONS

Engine	
Type	3.8-litre 3800 SFI® Series II V6
Horsepower	205 @ 5200 rpm
Torque	230 @ 4000 rpm

Towing	
3800 Series II V6	2.84 full drive ratio
1,000 maximum gross trailer rate (lbs)†	
3.06 full drive ratio	
3,000 maximum gross trailer rate (lbs)†	

(1) Sequential port fuel injection.
 (2) When properly equipped. Includes weight of trailer, cargo, passengers and equipment. All towing recommendations are subject to change. Check with your Buick dealer for the latest information. Trailer tongue load should be 10% of the maximum trailer weight but should not exceed the load rating specified for that vehicle, engine or hitch combination.
 (3) Requires Class II frame-mounted trailer hitch.



Capacity	
Trunk, cu. ft.	17.1
Fuel tank, gal.	18.0
Base curb weight, lbs.	3,430

Dimensions (in.)	
Length	200.0
Width	73.6
Height	56.4
Wheelbase	110.8
Front tread	60.4
Rear tread	60.4

Interior (in.)	front/rear
Legroom	42.6/40.4
Headroom	38.8/37.8
Shoulder room	59.1/58.9
Hip room	54.6/54.4

A FEW WORDS TO FAMILY

©1995 GM Corp. All rights reserved.
Buick and LeSabre are registered trademarks
of GM Corp. Buckle up, America!
Printed on recyclable paper from a renewable source.
Ident. No. 97-8A-100 Printed in U.S.A. 400n



A 16-page SmartLease®
brochure answers leasing
questions. Ask your
dealer for details, or call
1-800-32SMART for more
information.



A \$1,000 rebate is
available through the
GM Mobility Program
for disabled drivers
desiring specially
equipped Buicks.
Call 1-800-323-9835.



The GM Card™ is one
of a kind. Not only is
it convenient for day-
to-day purchases, it can
also help you buy your
next Buick.



Important: A word about this catalog.

We have tried to make this catalog as comprehensive and factual as possible. We reserve the right, however, to make changes at any time, without notice, in prices, colors, materials, equipment, specifications, models and availability. Since some information may have been updated since the time of printing, please check with your Buick dealer for complete details. Some models may not be available as shown in California.

A word about engines.

Buicks are equipped with engines produced by different operating units of GM, its subsidiaries or GM suppliers worldwide.

A word about assembly of Buicks.

Buicks are assembled by different operating units of General Motors, its subsidiaries or GM suppliers worldwide. Buicks incorporate thousands of components produced by different operating units of GM, its subsidiaries or GM suppliers worldwide. We sometimes find it necessary to produce Buicks with different or differently sourced components than originally scheduled. All such components have been approved for use in Buicks and will provide the quality performance associated with the Buick name. Since some options may be unavailable when your vehicle is assembled, we suggest you verify with your dealer that your vehicle includes the equipment you ordered, or, if there are changes, that they are acceptable to you.

A word about updated service information.

Buick regularly sends its dealers useful service bulletins about Buick products. Buick monitors product performance in the field. We then prepare bulletins for servicing our products better. Now you can receive these bulletins, too. Ask your dealer. For ordering information, call toll-free 1-800-551-4123.

A word about warranty.

The GM 3-year/36,000-mile Bumper to Bumper Warranty covers repairs for any new Buick, including labor and parts, to correct any defects in material or workmanship occurring during the warranty period. The complete vehicle (including tires) will be covered for 3 years or 36,000 miles, whichever comes first. Body sheet metal rust-through from corrosion is covered for 6 years or 100,000 miles, whichever comes first. Supplemental Restraint System coverage is 3 years regardless of mileage. See your Buick dealer for terms of this limited warranty.

The GM Card®

For information or to apply for the GM MasterCard® or the GM Gold Card® call 1-800-8GM-CARD.

For Buick product information, call 1-800-4A-BUICK.

For additional information about 1996 Buicks, complete and mail this postage-paid card or call 1-800-4A-BUICK.

NAME (Mr./Ms./Mrs.)

ADDRESS

CITY/STATE/ZIP

PHONE ()

DATE

NAME

ADDRESS

CITY/STATE/ZIP

PHONE ()

DATE

NAME

ADDRESS

CITY/STATE/ZIP

PHONE ()

DATE

NAME

ADDRESS

CITY/STATE/ZIP

PHONE ()

DATE

NAME

ADDRESS

CITY/STATE/ZIP

PHONE ()

DATE

NAME

ADDRESS

CITY/STATE/ZIP

PHONE ()

DATE

NAME

ADDRESS

CITY/STATE/ZIP

PHONE ()

DATE

NAME

ADDRESS

CITY/STATE/ZIP

PHONE ()

DATE

NAME

Would you like to continue to work with this dealership?

Yes ☐

No ☐

Indicate what additional Buick information you would like:

☐ 1996 Buick Full-Line Catalog

☐ 1996 QualitySafety Brochure ☐ 1996 Leasing Brochure

Visit Buick on the Internet at <http://www.buick.com>

1-888





NO POSTAGE
NECESSARY IF
MAILED IN THE
UNITED STATES

BUSINESS REPLY MAIL

FIRST-CLASS MAIL PERMIT NO. 10 FLINT, MI

POSTAGE WILL BE PAID BY ADDRESSEE

BUICK INFORMATION CENTER
PO BOX 2255
FLINT MI 48501-9919



A FEW WORDS TO FAMILY



Important: A word about this catalog.

We have tried to make this catalog as comprehensive and factual as possible. We reserve the right, however, to make changes at any time, without notice, in prices, colors, materials, equipment, specifications, models and availability. Since some information may have been updated since the time of printing, please check with your Buick dealer for complete details. Some models may not be available as shown in California.

A word about engines.

Buicks are equipped with engines produced by different operating units of GM, its subsidiaries or GM suppliers worldwide.

A word about assembly of Buicks.

Buicks are assembled by different operating units of General Motors, its subsidiaries or GM suppliers worldwide. Buicks incorporate thousands of components produced by different operating units of GM, its subsidiaries or GM suppliers worldwide. We sometimes find it necessary to produce Buicks with different or differently sourced components than originally scheduled. All such components have been approved for use in Buicks and will provide the quality performance associated with the Buick name. Since some options may be unavailable when your vehicle is assembled, we suggest you verify with your dealer that your vehicle includes the equipment you ordered, or, if there are changes, that they are acceptable to you.

A word about updated service information.

Buick regularly sends its dealers useful service bulletins about Buick products. Buick monitors product performance in the field. We then prepare bulletins for servicing our products better. Now you can receive these bulletins, too. Ask your dealer. For ordering information, call toll-free 1-800-551-4123.

A word about warranty.

The GM 3-year/36,000-mile Bumper to Bumper Warranty covers repairs for any new Buick, including labor and parts, to correct any defects in material or workmanship occurring during the warranty period. The complete vehicle (including tires) will be covered for 3 years or 36,000 miles, whichever comes first. Body sheet metal rust-through from corrosion is covered for 6 years or 100,000 miles, whichever comes first. Supplemental Restraint System coverage is 3 years regardless of mileage. See your Buick dealer for terms of this limited warranty.

The GM Card®

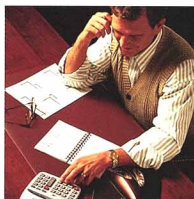
For information or to apply for the GM MasterCard® or the GM Gold Card®, call 1-800-8GM-CARD.

For Buick product information, call 1-800-4A-BUICK.



©1995 GM Corp. All rights reserved.
Buick and LeSabre are registered trademarks
of GM Corp. Buckle up, America!

Printed on recyclable paper from a renewable source.
Ident. No. 97-6A-100 Printed in U.S.A. 400m



A 16-page SmartLease® brochure answers leasing questions. Ask your dealer for details, or call 1-800-32SMART for more information.



A \$1,000 rebate is available through the GM Mobility Program for disabled drivers desiring specially equipped Buicks. Call 1-800-323-9935.



The GM Card® is one of a kind. Not only is it convenient for day-to-day purchases, it can also help you buy your next Buick.



For additional information about 1996 Buick, complete and mail this postage-paid card or call 1-800-4A-BUICK.

NAME (Mr./Ms./Mrs.) _____

ADDRESS _____

CITY/STATE/ZIP _____

PHONE (____) _____

☐ Please help us to better understand your automotive needs by completing the brief survey below.

When do you plan to purchase your next vehicle? _____ (Month)

Which vehicle are you planning to replace? _____ (Model)

Model _____ Year _____

How often do you replace your vehicle? _____ (Years)

If you currently own a Buick, from what dealer did you purchase it? _____ (Name)

Would you like to continue to work with this dealership?

Yes ☐ No ☐

☐ 1996 Buick Future Catalog ☐ 1996 Quality/Lease Brochure ☐ 1996 Leasing Brochure

Visit Buick on the Internet at <http://www.buick.com>

1-800-4A-BUICK

OUR FAMILIES' FUTURES ARE LINKED

You'll find more than quality automobiles in a Buick showroom — quality treatment is another family trait. Quality Plus delivery assures that your new Buick is roadworthy and your questions are answered to your complete satisfaction. Bumper to Bumper Warranty* (3 years or 36,000 miles,



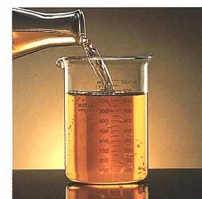
whichever comes first) includes courtesy transportation and a loaner vehicle for overnight service on warranty repairs. There's also a customer assistance toll-free number (1-800-521-7300) that keeps you in touch if needed. You're family at Buick.

*See your dealer for terms of this limited warranty.

SERVING YOU



The on-board diagnostics system alerts the driver of a potential problem and helps a technician quickly identify its source.



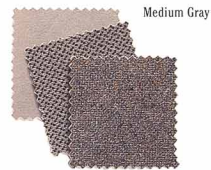
100,000-mile coolants and transmission fluids eliminate the need for frequent changing. Stainless steel exhausts last longer. It all helps.



Platinum-tipped spark plugs provide extended life and maintenance intervals resulting in lower costs and greater peace of mind.



Adriatic Blue



Medium Gray



Taupe



Dark Ruby Red

LE SABRE	
Exterior	Interior
Bright White (16)	Adriatic Blue, Medium Gray, Taupe, Dark Ruby Red
Sandstone Beige Metallic (50)	Taupe, Dark Ruby Red
Platinum Gray Metallic (03)	Adriatic Blue, Medium Gray, Dark Ruby Red
Medium Autumn Green Metallic (47)	Medium Gray, Taupe
Jamaican Teal Pearl (42)	Medium Gray, Taupe
Majestic Teal Pearl (43)	Adriatic Blue
Light Adriatic Blue Metallic (36)	Adriatic Blue, Medium Gray, Taupe
Adriatic Blue Pearl (30)	Medium Gray, Taupe, Dark Ruby Red
Ruby Red Pearl (72)	Medium Gray, Taupe, Dark Ruby Red
Dark Cherry Pearl (77)	

Bright White (16)



Platinum Gray Metallic (03)



Jamaican Teal Pearl (42)



Light Adriatic Blue Metallic (36)



Ruby Red Pearl (72)



Sandstone Beige Metallic (50)



Medium Autumn Green Metallic (47)



Majestic Teal Pearl (43)



Adriatic Blue Pearl (30)



Dark Cherry Pearl (77)



3M USC 380

Official Sponsor of the
1996 U.S. Olympic Team



*Joseph and Beverly Shomski,
Flint, Michigan — and their 1994 LeSabre.*

"Room for our whole family, comfort, power, maneuverability — we love it!"



BUICK®

The New Symbol For Quality
In America.