



03 ESCAPE



ESCAPE

We've all heard the saying, "Live life to the fullest." Well, between work, play, errands, whatever, it looks like you're doing just that. But is it rich? You bet, as long as you find a vehicle that can keep pace with all the craziness. For you, that vehicle is Escape, the sporty "ute" that can change gears as quickly as you do. Yes, a lot of stuff happens in your life in that time between pulling out of the garage and rolling back in. Escape is ready for every change of plan. It will easily take you from the office, to soccer, and into a good campsite before nightfall. With its stylish appeal and bold spirit of adventure, Escape is the perfect contribution to a life less ordinary — like yours. Apparently other people feel that way, too. Why else would Escape be one of America's best-selling small sport utility vehicles?

- 2 Limited
- 4 XLT Appearance Package
- 6 XLT Sport
- 8 XLT Premium
- 10 Comfort
- 12 Features
- 14 Safety
- 15 Control
- 16 Specifications
- 18 Colors/Wheels
- 20 Dealer Accessories



NEW ESCAPE LIMITED



1

Because you never know where your travels may take you, it's best to be behind the wheel of the new Escape Limited. Cruise with standard comforts uncommon to most SUVs in the class – things like rich, premium leather seating surfaces, side-impact airbags,* an auto-dimming rearview mirror, automatic headlamps, sunvisors with illuminated mirrors, and the MACH® 6-disc in-dash CD player with automatic volume control.

Whether you're pulling up to a midtown club or dashing to the dry cleaners, you'll be proud of Escape Limited's sleek, monochromatic appearance and unique 16" bright machined-aluminum wheels.

1 Snow, ice... any of the elements that want to mess with Escape Limited's visibility are thwarted with the handy **power, heated outside mirrors**.



2

2 One of the unexpected standards in the new Escape Limited is the **Reverse Sensing System**. It alerts the driver, through a series of beeps, to the presence of certain objects behind the vehicle.

3 Limited is all about cozy conveniences. And what could be cozier than **heated driver and front-passenger seats**? Standard on Escape Limited.

*Always wear your safety belt and secure children in the rear seat.



3



NEW ESCAPE XLT APPEARANCE PACKAGE

With all it's got going on, it's hard to imagine how you could improve upon XLT Premium. Here's a thought: add the available new XLT Appearance Package and Escape's head-turning good looks are elevated to a whole new level. It starts with hot-looking, painted Dark Shadow Grey lower bodyside cladding, bumpers, wheel-lip moldings and black side step bars. It wraps up with unique 16" wheels that really set this XLT apart. With this bold new look, Escape XLT Premium with the Appearance Package is all attitude.



ESCAPE XLT SPORT



2

Wide-open spaces. Some dream of them, some go find them. For the latter, there is Escape XLT Sport, a vehicle with the power to get you out past the pavement and into a whole new frame of mind. Drive around with the confidence that comes from the 201 hp Duratec V6 engine and capable Control Trac® II 4x4 system.

XLT Sport has a long list of standard features that look good and work hard — things like side step bars, 16" sport aluminum wheels with all-terrain treads that really grab the road, the innovative No Boundaries™ Rack System, color-keyed front and rear floor mats, and even a Class II trailer towing package.

- 1 With Escape XLT Sport, you'll always have the freedom of choice to take off, without leaving anything behind. The ingenious **No Boundaries™ Rack System** gives you all the capability you could want. On top of the roof, the rack has adjustable cross-bars that support up to 100 lbs. of gear.
- 2 Need more space? Simply unlock the rack, pull it down, and the rack snaps into position over the liftgate to accommodate yet **another 100 lbs. of gear**. And check this out: you can carry gear on both racks at the same time. So load up.



ESCAPE XLT PREMIUM

For you, life isn't about compromise. You know what you want. In your vehicle, that means all the stuff that makes driving fun. To satisfy your must-have list, you need Escape XLT Premium. It's a sporty SUV that handles and feels great behind the wheel, thanks to Escape's fully independent front and rear suspension and peppy V6 engine. And yes, it has all the extras – the things you can't live without. And most are standard. Open the standard power moonroof and watch how the light plays off the supple leather seating surfaces (also standard). Feel the leather-wrapped steering wheel with handy steering wheel-mounted speed control buttons. And when you want to load cargo, just fold down either side of the rear 60/40 split-bench seat. See? Nothing is left out. And why would it be? This is your vehicle. Just the way you want it.



INNER COMFORT

What is an SUV?

Sport? That means fun, we understand that. Utility? Got it, very functional. Vehicle? Well, that's obvious. So where does comfort fit in? Apparently, it's all inside Escape. Low-back bucket seats with adjustable head restraints let front passengers settle right in. Rear passengers can stretch out with a fold-flat bench seat that's even split 60/40 in XLT and Limited models. Standards include air conditioning, rear floor heat ducts, power windows, power door locks with remote keyless entry, and privacy glass (XLS Sport, XLT and Limited). Choose the Leather Comfort Group and you'll get leather seating surfaces and a leather-wrapped steering wheel. Now *that's* comfy.



INTERIOR FEATURES

- 1 Starlight or sunshine, you'll never have to miss it with this available **power moonroof**. Either tilt it open, retract it completely, or take advantage of the interior shade and tinted glass. You're in control.
- 2 Enjoy the stellar sound of the **MACH® MP3 Music System**. It spins conventional CDs, MP3s and mixed-mode discs. You can play up to 253 songs with about 10 hours of play on one disc. Standard on Escape XLS Sport.
- 3 You'll have no trouble finding your comfort zone with the **power driver's seat** on XLT and Limited models. It provides six directions of motion.
- 4 One of the many fabulous standard features of Escape Limited is this **6-disc in-dash MACH® Audio System** with automatic volume control. It kicks out amazing sound from seven well-placed speakers.
- 5 Escape also includes the **LATCH system** with 3 top tether anchors mounted in the roof and lower anchors in the seats to securely fasten child safety seats in the rear outboard positions.
- 6 Not only will you and your passengers enjoy a comfortable, roomy interior, you'll also have lots of space for gear in back. With the rear seats up, there is 33.1 cu. ft. of cargo space. Fold them down, and a **generous 64.8 cu. ft.** is available.
- 7 You'll feel more secure knowing your gear is concealed under this **retractable, heavy-duty vinyl cargo cover**. Offered as an option on XLS and XLT, and standard on Limited, it matches your interior and helps maintain a clean look in back.
- 8 With two choices, it's easy to stow your cargo in back. Slip small stuff in through the **liftglass**, or open the liftgate for larger items.



SAFETY & SECURITY

Escape's long list of features practically guarantees a good time. But you also want to feel safe and secure. With **19 out of 20 stars for crash performance**, Escape was engineered to do just that. The National Highway Traffic Safety Administration (NHTSA) gave Escape double 5-Star ratings in side-impact testing (1st and 2nd rows), a 5-Star rating for driver's-side frontal crash testing, and a 4-Star rating for the front passenger's side.

In addition, Escape includes a number of standard and available features to help keep you feeling safe and secure, like a standard remote keyless entry system and the SecuriLock™ anti-theft system. After all, when it comes to peace of mind, more is definitely better.

- 1 Integrated into the luxurious leather-trimmed front bucket seats in Escape Limited are standard **side-impact airbags*** that offer protection in the event of certain side impacts. They're available on all models.
- 2 Escape is built with sturdy unibody construction and **crumple zones** that are designed to dissipate energy away from the passenger compartment.
- 3 **Side intrusion door beams** help reduce passenger compartment intrusion in certain side impacts. The solid steel supports provide structural stability and energy absorption.
- 4 Meticulous attention has gone into designing Escape's braking system. Escape XLT and Limited models are equipped with a standard **4-wheel anti-lock braking system (ABS)** that provides controlled stopping power as well as steering control. Also available on XLS models.

*Always wear your safety belt and secure children in the rear seat.



1



4

3

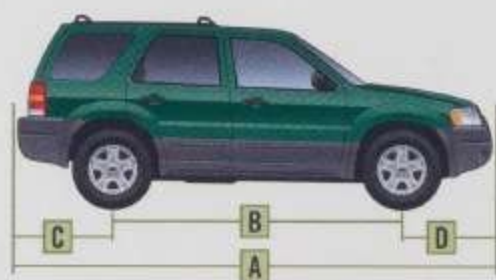
2

CONTROL

Sure, you've got to get from point A to point B, but you want to have some fun along the way. And you want to be both comfortable *and* in control. Escape's **fully independent rear suspension** has that covered. This smart design allows each rear wheel to respond to dips and bumps independently. That means a smooth ride and precise handling.

For improved traction, opt for Escape 4x4. The **Control Trac® II 4-wheel-drive system** provides two driver-selectable modes. Operate in "4x4 AUTO" for most driving conditions. In this mode, the vehicle operates in front-wheel drive and automatically proportions more torque to the rear axle when slippage occurs. There's also the "4x4 ON" mode that locks the front and rear axles together for enhanced traction in more extreme situations.





| Exterior | 4x2/4x4 |
|----------------------------|---------|
| A. Overall length | 173.0" |
| B. Wheelbase | 103.1" |
| C. Overhang – rear | 36.4" |
| D. Overhang – front | 33.4" |
| E. Overall width | 70.1" |
| F. Height | 69.1" |
| G. Ground clearance (min.) | 7.8" |
| H. Loadfloor height | 29.3" |
| I. Ramp breakover angle | 20.0° |
| J. Angle of departure | 22.0° |
| K. Angle of approach | 28.5° |

Interior**1st row**

| | |
|-----------------|-------|
| Head room | 40.4" |
| Shoulder room | 56.3" |
| Hip room | 53.4" |
| Leg room | 41.6" |
| Leg room (max.) | 42.7" |

2nd row

| | |
|---------------|-------|
| Head room | 39.2" |
| Shoulder room | 55.9" |
| Hip room | 49.0" |
| Leg room | 36.4" |

Cargo (cu. ft.)

| | |
|---|------|
| Maximum cargo volume (2nd-row cushion removed) | 69.2 |
| Cargo volume (2nd row folded) | 64.8 |
| Behind 2nd row | 33.1 |

STANDARD FEATURES**Mechanical**

| |
|---|
| 4-wheel independent suspension |
| 100,000-mile tune-up interval* |
| Axle ratio – 2.93:1 |
| Battery saver |
| Control Trac® II full-time 4-wheel-drive system (4x4 models only) |
| Front-wheel drive |
| Fuel tank – 16-gallon capacity |
| Power rack-and-pinion steering |
| Stabilizer bar – Front |
| Unibody construction |

Safety/Security

| |
|--|
| Airbags – Driver and front-passenger 2nd Generation |
| Auto headlamps-off delay |
| Belt-Minder™ safety belt reminder |
| Brake/shift interlock with automatic transmission |
| Fuel pump inertia shutoff switch |
| Headlamps-on alert chime |
| Height-adjustable shoulder safety belts – Front |
| Key-in-ignition alert chime |
| LATCH system upper tether anchors and lower anchors for child safety seats – Rear outboard positions |
| Remote keyless entry system with 2 key fobs |
| Safety belt energy management retractors – Front |
| Safety belt pretensioners – Front |
| SecuriLock™ – Passive anti-theft system |
| Side intrusion door beams |

Seating

| |
|--|
| Front bucket seats |
| Rear bench seat with tip-fold-flat latch |
| Removable rear seat cushion |

Interior

| |
|---|
| Accessory delay for power windows |
| Air conditioning |
| Assist handles – 4 front, 2 rear |
| Cargo area floor hooks (4) |
| Floor console – Storage bin and 5 cupholders (4 in XLT and Limited) |
| Glove compartment with lock |
| Head restraints – Adjustable (4) |
| Illuminated entry system |
| Power door locks with rear-door child safety locks |
| Power points – 2 front |
| Power windows – With one-touch-down driver's-side feature |
| Rear floor heat ducts |
| Tachometer |
| Tilt steering wheel |
| Visor vanity mirrors – Dual-covered |

Exterior

| |
|---|
| Bodyside cladding and bumpers – Grey molded-in color on XLS/XLT models, painted body color on Limited (monochromatic) |
| Headlamps – Aerodynamic halogen |
| Liftgate with flip-up glass |
| Power outside mirrors with manual-fold feature |
| Rear defroster |
| Roof rack |
| Solar tinted glass (door glass and liftgate) |
| Windshield wipers – Front: variable-intermittent with washer; rear: 2-speed intermittent with washer |

*Under normal driving conditions with regular fluid and filter changes.

MODEL-SPECIFIC FEATURES/OPTIONS

| XLS Value 4x2 | |
|------------------------|---|
| XLS Sport 4x2 | |
| XLS Popular 4x2 or 4x4 | |
| Mechanical | |
| ■ | 2.0L DOHC Zetec I4 engine |
| — | 3.0L DOHC Duratec V6 engine |
| ■ | 5-speed manual transaxle |
| — | 4-speed automatic transaxle |
| ■ | 15" styled-steel wheels |
| □ | 15" aluminum wheels |
| ■ | P225/70R15 all-season BSW tires |
| — | P225/70R15 all-season OWL tires |
| Safety/Security | |
| □ | 4-wheel anti-lock braking system (ABS) |
| □ | Side-impact airbags – Driver and front-passenger |
| Seating | |
| ■ | Cloth trim |
| Interior | |
| ■ | AM/FM stereo with single CD player, clock and 4 speakers |
| — | AM/FM stereo with MACH® MP3 Music System |
| □ | Convenience Group |
| — | - Speed control |
| — | - Perimeter alarm |
| — | - Front and rear floor mats |
| □ | Floor mats* – Front and rear |
| □ | Retractable cargo cover |
| Exterior | |
| — | Accent bars – Sparkle silver |
| ■ | Grille – Black surround with mesh center |
| — | Privacy glass (rear quarter and rear window) |
| □ | Roof rack crossbars |
| □ | Side step bars** |
| — | Trailer tow – Includes Class II 3500-lb. receiver, 4-pin trailer wiring harness and engine oil cooler (3.0L)† |

■ Standard □ Optional — Not Available

*Optional only as part of Convenience Group on XLS Value 4x2 and XLS Popular 4x2 or 4x4.

**Requires 15" aluminum wheels/tires. †Engine oil cooler standard with 2.0L.

| XLT Popular 4x2 | |
|--------------------------|---|
| XLT Sport 4x2 or 4x4 | |
| XLT Popular 2 4x2 or 4x4 | |
| XLT Premium 4x2 or 4x4 | |
| Limited 4x2 or 4x4 | |
| Mechanical | |
| ■ | 3.0L DOHC Duratec V6 engine |
| ■ | 4-speed automatic transaxle |
| ■ | 15" aluminum wheels |
| — | 16" sport aluminum wheels |
| — | 16" aluminum wheels |
| ■ | 16" bright machined-aluminum wheels |
| ■ | P225/70R15 all-season BSW tires |
| — | P235/70R16 all-terrain OWL tires |
| — | P235/70R16 all-season tires (BSW 4x2, OWL 4x4) |
| — | P235/70R16 all-season BSW tires |
| — | All-season OWL tires (4x2 models) |
| Safety/Security | |
| ■ | 4-wheel anti-lock braking system (ABS) |
| □ | Side-impact airbags – Driver and front-passenger |
| Seating | |
| ■ | Cloth trim – Premium grade |
| ■ | 6-way power driver's seat |
| — | Heated front seats |
| ■ | Rear 60/40 split-bench with tip-fold-flat latch |
| Interior | |
| □ | AM/FM stereo with single CD/cassette, clock and 4 speakers |
| ■ | AM/FM stereo with 6-disc in-dash CD player and 4 speakers |
| □ | AM/FM MACH® audio system with 6-disc in-dash CD player and 7 speakers, plus automatic volume control (Limited only) |
| — | Auto-dimming rearview mirror with automatic headlamps |
| ■ | Convenience Group |
| — | - Speed control |
| — | - Perimeter alarm |
| — | - Front and rear floor mats |
| ■ | Floor console – With storage bin, armrest and 4 cupholders |
| ■ | Instrument panel with painted center finish and front-door switch bezels |
| — | Leather Comfort Group |
| — | - Leather seating surfaces |
| — | - Black leather-wrapped steering wheel |
| — | Overhead console with dual storage bins |
| □ | Retractable cargo cover |
| — | Visor vanity mirrors – Illuminated |
| Exterior | |
| ■ | Fog lamps |
| ■ | Grille – Chrome surround |
| — | No Boundaries™ Rack System |
| — | Power, heated outside mirrors with manual-fold feature |
| □ | Power moonroof with sunshade and mini overhead console |
| ■ | Privacy glass (rear quarter and rear window) |
| — | Reverse Sensing System |
| ■ | Roof rack crossbars |
| □ | Side step bars |
| □ | Trailer tow – Includes Class II 3500-lb. receiver, 4-pin trailer wiring harness and engine oil cooler |
| XLT Appearance Package | |
| — | - Painted Dark Shadow Grey bodyside cladding, bumpers and wheel-lip moldings |
| — | - Side step bars – Black |
| — | - 16" bright machined-aluminum wheels |
| — | Wheel-lip moldings†† – Grey molded-in color on XLT Sport, painted body color on Limited (monochromatic) |

††Optional only as part of the XLT Appearance Package on XLT Premium.



2.0L DOHC Zetec I4 Engine



3.0L DOHC Duratec V6 Engine

| | 2.0L I4 | 3.0L V6 |
|----------------------------|------------|------------|
| Horsepower (hp @ rpm) | 127 @ 5400 | 201 @ 5900 |
| Torque (lb.-ft. @ rpm) | 135 @ 4500 | 196 @ 4700 |
| Axle ratio | 2.93:1 | 2.93:1 |
| Towing capacity* (lbs.) | 1000 | 2000 |
| | | 3500** |

*Maximum capacity shown is for properly equipped vehicles with required equipment and a 150-lb. driver. Weight of additional options, equipment, passengers and cargo must be deducted from this weight. For additional information, see your Ford Dealer.

**With Class II trailer towing.

Comparisons based on 2003 competitive models, publicly available information and Ford certification data at time of printing. Some features discussed may be optional. Vehicles shown may contain optional equipment. Features shown may be offered only in combination with other options or subject to additional ordering requirements or limitations. Following publication of the catalog, certain changes in standard equipment, options and the like, or product delays, may have occurred which would not be included in these pages. Your Ford Dealer is the best source for up-to-date information. Ford Division reserves the right to change product specifications at any time without incurring obligations.

INTERIOR/EXTERIOR COMBINATIONS

| | | |
|---|---|-------------------------------|
| | | Medium/Dark Pebble |
| | | Medium/Dark Flint |
| | | Ebony Black |
| ■ | ■ | XLS/XLS Sport/XLT |
| ■ | | Oxford White |
| ■ | | Gold Ash Metallic* |
| ■ | ■ | Chrome Yellow |
| ■ | ■ | Red Fire Metallic* |
| ■ | | Aspen Green Metallic* |
| ■ | ■ | True Blue Metallic |
| ■ | ■ | Satin Silver Metallic |
| ■ | ■ | Dark Shadow Grey Metallic |
| ■ | ■ | Black |
| | ■ | XLT Sport |
| ■ | ■ | Chrome Yellow |
| ■ | ■ | Red Fire Metallic* |
| ■ | ■ | Dark Shadow Grey Metallic |
| ■ | ■ | Black |
| ■ | ■ | XLT Appearance Package |
| ■ | ■ | Oxford White |
| ■ | ■ | Red Fire Metallic* |
| ■ | | Aspen Green Metallic* |
| ■ | ■ | True Blue Metallic |
| ■ | ■ | Satin Silver Metallic |
| ■ | ■ | Black |
| | ■ | Limited |
| ■ | ■ | Gold Ash Metallic* |
| ■ | ■ | True Blue Metallic |
| ■ | ■ | Satin Silver Metallic |
| ■ | ■ | Dark Shadow Grey Metallic |
| ■ | ■ | Black |

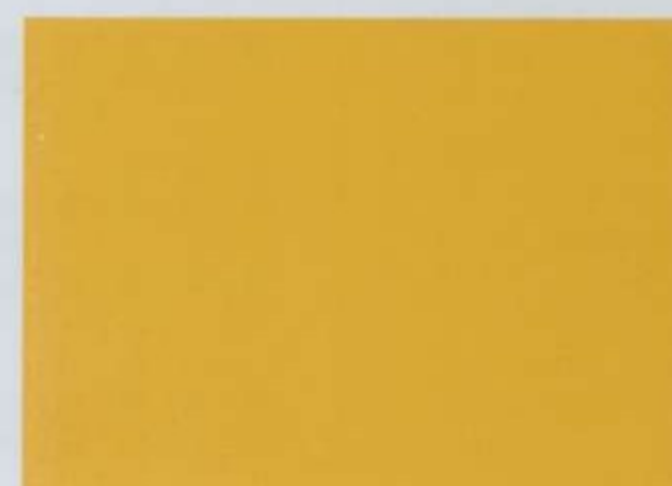
*New for 2003.



Oxford White



Gold Ash Metallic



Chrome Yellow



Red Fire Metallic



Aspen Green Metallic



True Blue Metallic



Satin Silver Metallic

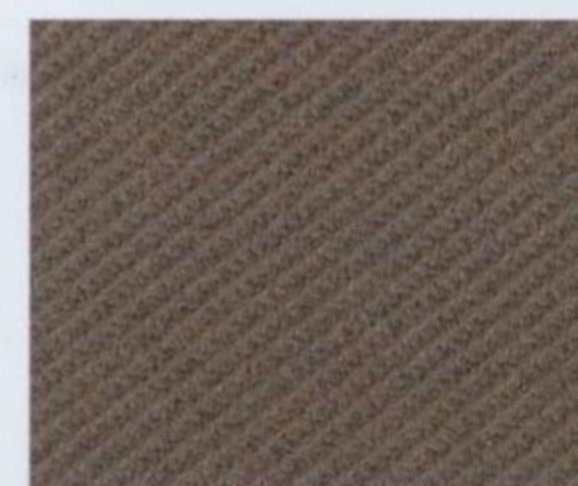


Dark Shadow Grey Metallic

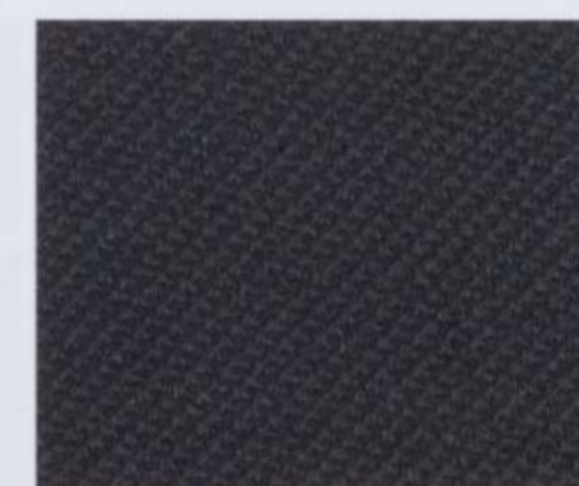


Black

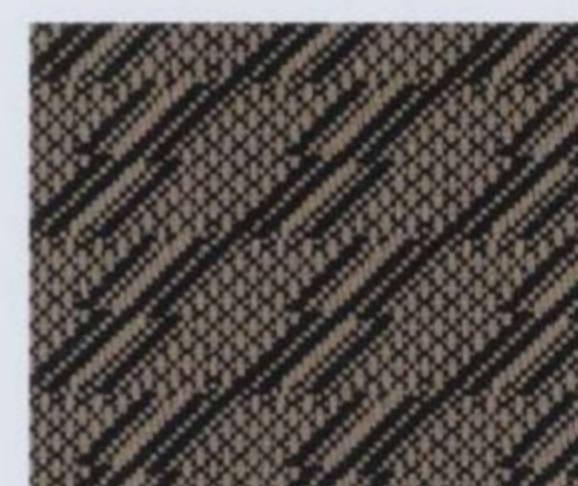
Ford uses clearcoat paint for beauty and protection. Colors shown are representative only. See your dealer for actual paint/trim options.



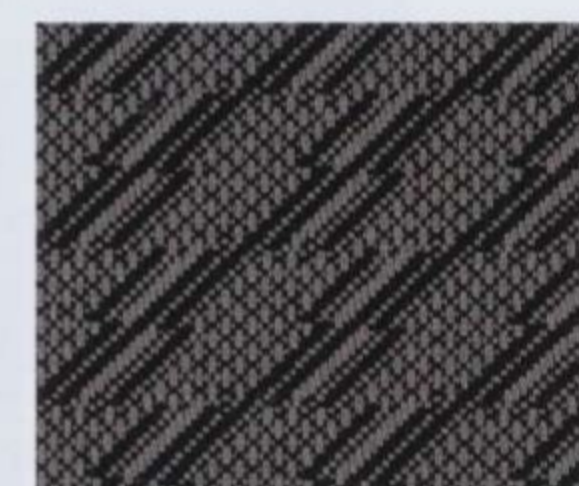
Medium/Dark Pebble Cloth
Standard on XLS/XLS Sport



Medium/Dark Flint Cloth



Medium/Dark Pebble Premium Cloth
Standard on XLT/XLT Sport



Medium/Dark Flint Premium Cloth



Medium/Dark Pebble Leather
Standard on XLT with Appearance Package, available on XLT Sport/Popular 2



Medium/Dark Flint Leather



Medium/Dark Pebble Premium Leather



Ebony Black Premium Leather
Standard on Limited



15" Styled-Steel Wheel
Standard on XLS Value and XLS Popular



15" Aluminum Wheel
Standard on XLS Sport



15" Aluminum Wheel
Standard on XLT Popular



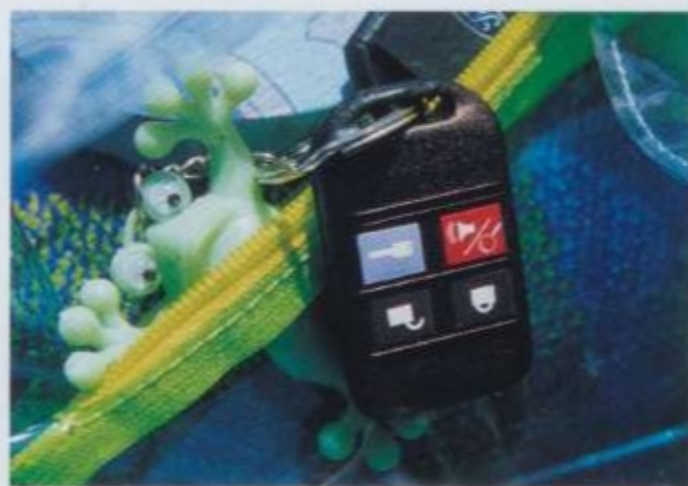
16" Aluminum Wheel
Standard on XLT Popular 2 and Premium



16" Sport Aluminum Wheel
Standard on XLT Sport



16" Bright Machined-Aluminum Wheel
Standard on Limited and XLT with Appearance Package



1 Add a little extra polish and shine to your Escape with these **chrome taillight surrounds**.

2 The **remote start** allows you to start your vehicle and get it toasty warm or refreshingly cool from up to 500 feet away. For added security, it can also turn on the interior lights, flash the headlamps and sound the horn in an emergency.

3 With so much room for storage, you'll want to maintain a little organization. This heavy-duty **cargo organizer** sorts and stabilizes your gear.

4 Attach the **Quarter-Roc® Bike Carrier** to Escape's standard hitch mount and you can load up one or two bikes and head out to the trail. The Roc conveniently swings down to allow access to the cargo area.

5 Keep them entertained for hours with the **Rear-Seat DVD Entertainment System**.

6 Add some slick to your Escape's style with **distinctive 16" chrome wheels**.

7 You'll enjoy safari-style travel when you load up your gear in the **Yakima® LoadWarrior** system. Its multiple components allow you to secure anything from luggage, to bikes, to kayaks, onto the standard roof rack or the XLT Sport No Boundaries™ Rack System.

4

2

3

5

6

7

1

2

3

4

5

6

7

8

9

10

11

12

13

14

15

16

17

18

19

20

21

22

23

24

25

26

27

28

29

30

31

32

33

34

35

36

37

38

39

40

41

42

43

44

45

46

47

48

49

50

51

52

53

54

55

56

57

58

59

60

61

62

63

64

65

66

67

68

69

70

71

72

73

74

75

76

77

78

79

80

81

82

83

84

85

86

87

88

89

90

91

92

93

94

95

96

97

98

99

100

101

102

103

104

105

106

107

108

109

110

111

112

113

114

115

116

117

118

119

120

121

122

123

124

125

126

127

128

129

130

131

132

133

134

135

136

137

138

139

140

141

142

143

144

145

146

147

148

149

150

151

152

153

154

155

156

157

158

159

160

161

162

163

164

165

166

167

168

169

170

171

172

173

174

175

176

177

178

179

180

181

182

183

184

185

186

187

188

189

190

191

192

193

194

195

196

197

198

199

200

201

202

203

204

205

206

207

208

209

210

211

212

213

214

215

216

217

218

219

220

221

222

223

224

225

226

227

228

229

230

231

232

233

234

235

236

237

238

239

240

241

242

243

244

245

246

247

248

249

250

251

252

253

254

255

256

257

258

259

260

261

262

263

264

265

266

267

268

269

270

271

272

273

274

275

276

277

278

279

280

281

282

fordvehicles.com



FORD. NO BOUNDARIES. WHEN YOU LIVE WITH SPIRIT AND PASSION, THE POSSIBILITIES OF LIFE AND ACHIEVEMENT ARE LIMITLESS. THERE ARE *NO BOUNDARIES*. EVERY PRODUCT FORD MOTOR COMPANY DESIGNS AND BUILDS IS THE DIRECT RESULT OF 100 YEARS OF THAT SPIRIT AND PASSION. IT WAS PRESENT WHEN HENRY FORD FOUNDED THE COMPANY IN 1903 AND WHEN THE FIRST AUTOMOBILE ROLLED FROM HIS WORKSHOP. TODAY, IT IS MORE ALIVE THAN EVER. THERE ARE *NO BOUNDARIES* TO OUR ENDLESS DRIVE TO TURN A NO INTO A RESOUNDING YES. TO GO BEYOND WHAT WE THOUGHT WAS POSSIBLE. TO CREATE AN ARRAY OF VEHICLES THAT HELP PROVIDE A PLACE WHERE FAMILY AND FRIENDS CAN CONNECT WITH EACH OTHER AS WELL AS WITH THEIR COMMUNITY. AND THERE ARE *NO BOUNDARIES* TO OUR DEDICATION – STRIVING TO BRING YOU THE HIGHEST QUALITY, MOST EXCITING, BEST ENGINEERED, MOST RELIABLE PRODUCTS IN THE WORLD.

