

03

EXPLORER SPORT



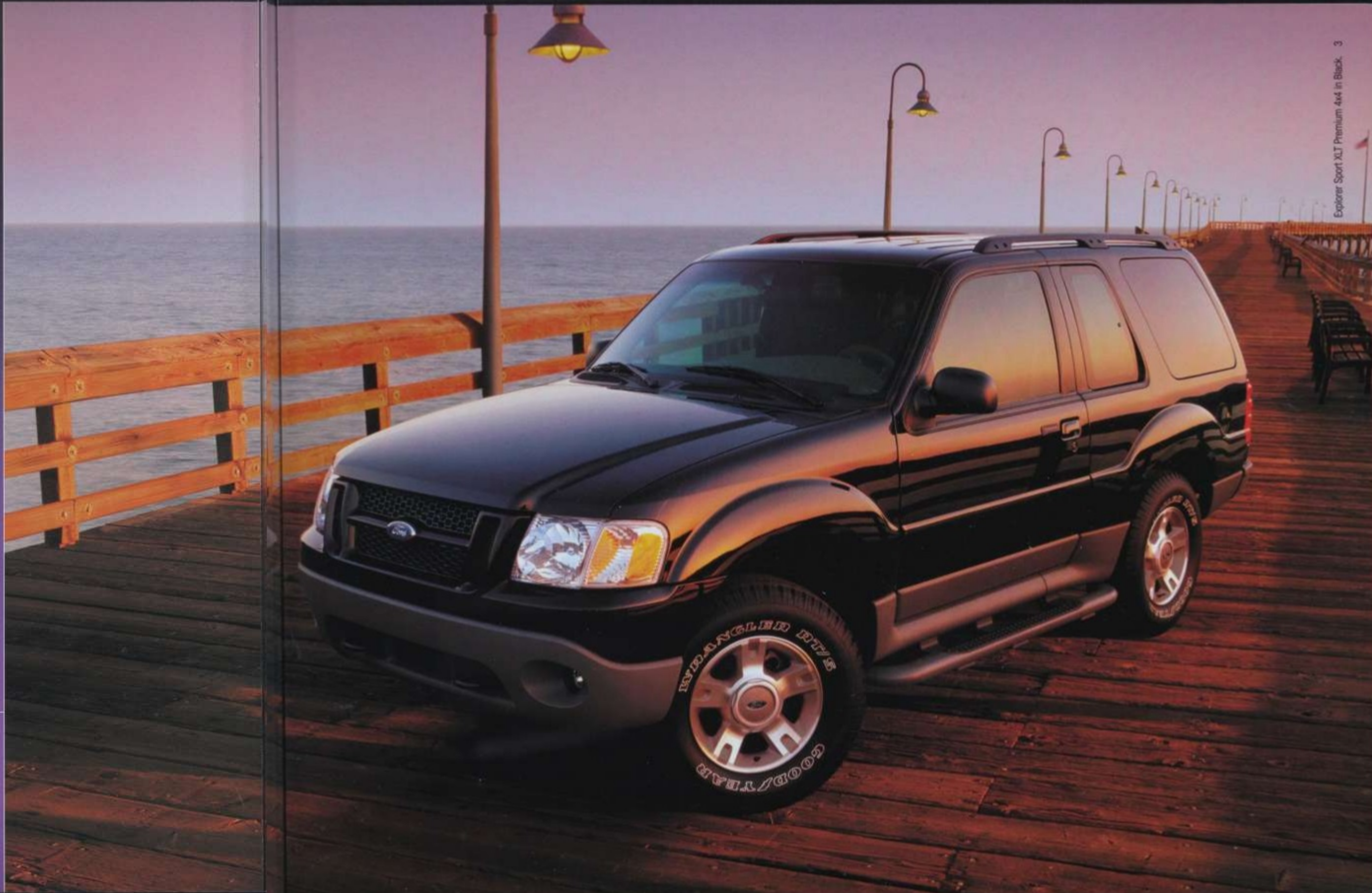
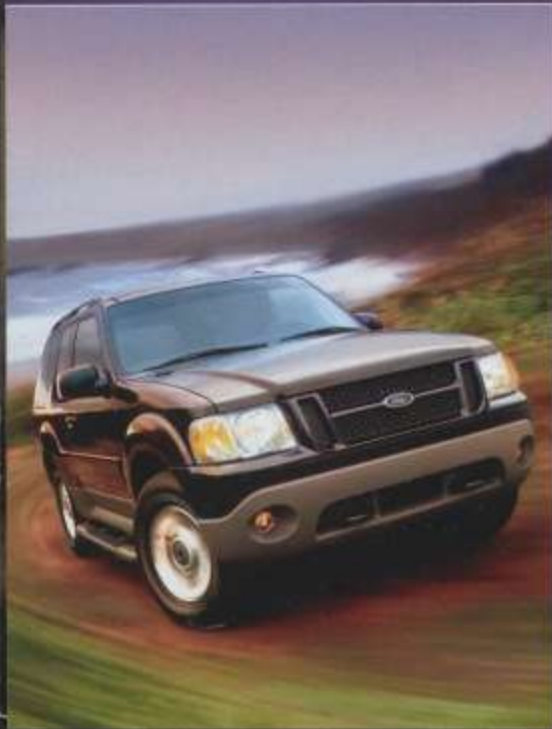


EXPLORER SPORT

You like to do a lot of different things. Sometimes all at once. Explorer Sport is the kind of no-nonsense vehicle that can handle it. With its big 16" wheels and sporty two-door style, expansive interior, and 4-wheel power disc anti-lock brakes, Sport has a multi-faceted personality that's right at home with your own. Adventurous on the outside. Accommodating on the inside. And downright protective at heart.

Shown below with optional moonroof.

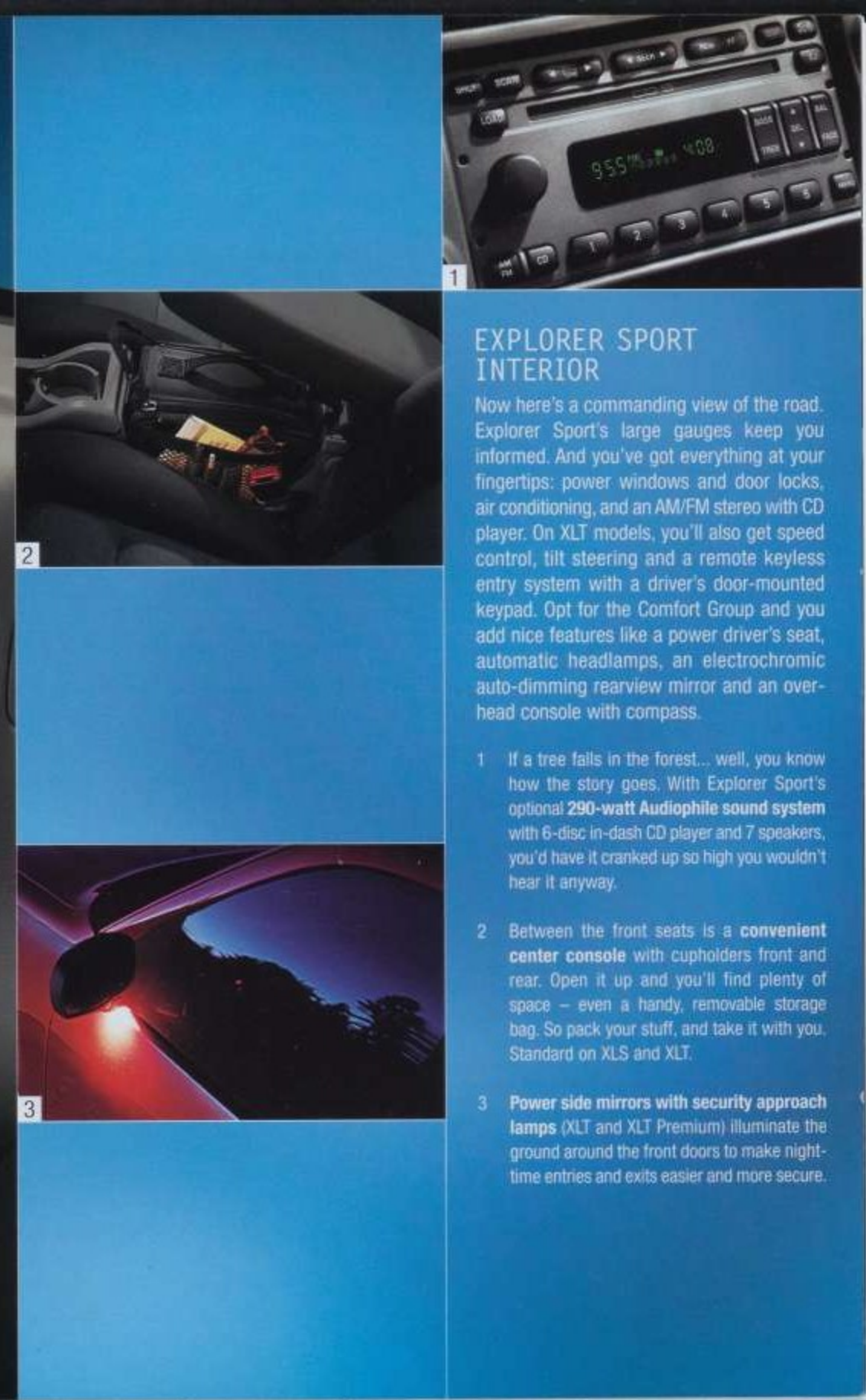






Road maps? Don't need 'em. Especially when you're behind the wheel of Explorer Sport. Available in 4x2 or rugged 4x4 capability, Explorer Sport takes you off the beaten path. So when Friday at 5 o'clock finally rolls around, and you're ready to roam, you can go wherever you want. With whatever you want. Feel free to explore the local countryside, or maybe the local sports shop. Explorer Sport makes it well worth the trip.





EXPLORER SPORT INTERIOR

Now here's a commanding view of the road. Explorer Sport's large gauges keep you informed. And you've got everything at your fingertips: power windows and door locks, air conditioning, and an AM/FM stereo with CD player. On XLT models, you'll also get speed control, tilt steering and a remote keyless entry system with a driver's door-mounted keypad. Opt for the Comfort Group and you add nice features like a power driver's seat, automatic headlamps, an electrochromic auto-dimming rearview mirror and an overhead console with compass.

- 1 If a tree falls in the forest... well, you know how the story goes. With Explorer Sport's optional **290-watt Audiophile sound system** with 6-disc in-dash CD player and 7 speakers, you'd have it cranked up so high you wouldn't hear it anyway.
- 2 Between the front seats is a **convenient center console** with cupholders front and rear. Open it up and you'll find plenty of space — even a handy, removable storage bag. So pack your stuff, and take it with you. Standard on XLS and XLT.
- 3 **Power side mirrors with security approach lamps** (XLT and XLT Premium) illuminate the ground around the front doors to make night-time entries and exits easier and more secure.

Your "roughing it" days are definitely over. Especially when you've settled into Explorer Sport's comfortable front bucket seats with adjustable head restraints. There's plenty of room to seat four, with plenty of room to move around. And for your peace of mind, Explorer Sport features standard front airbags* and 4-wheel anti-lock brakes.

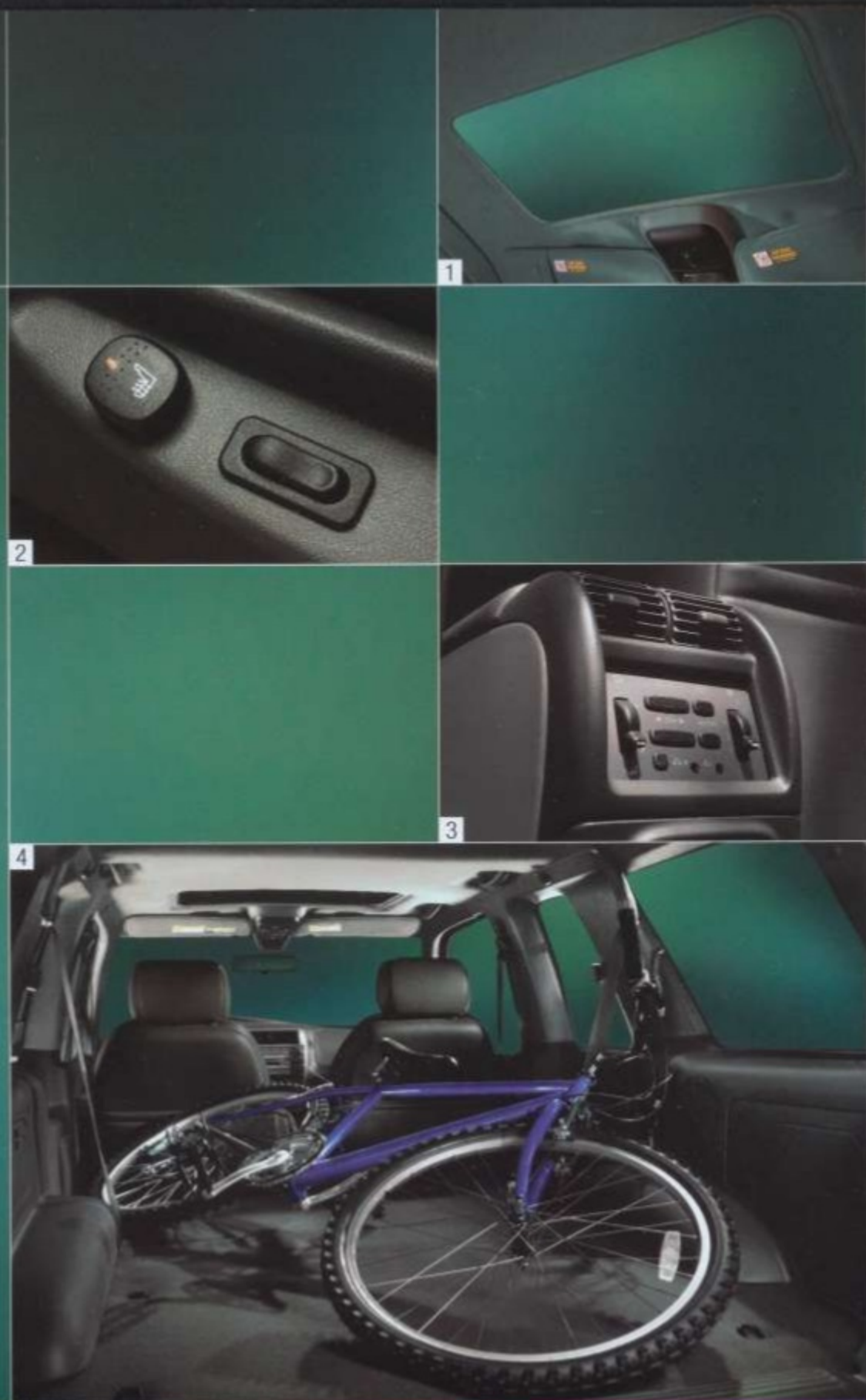
1 Let the sun shine in. Explorer Sport's optional **power moonroof** tilts open at the touch of a button, or fully retracts when you want wide-open fun.

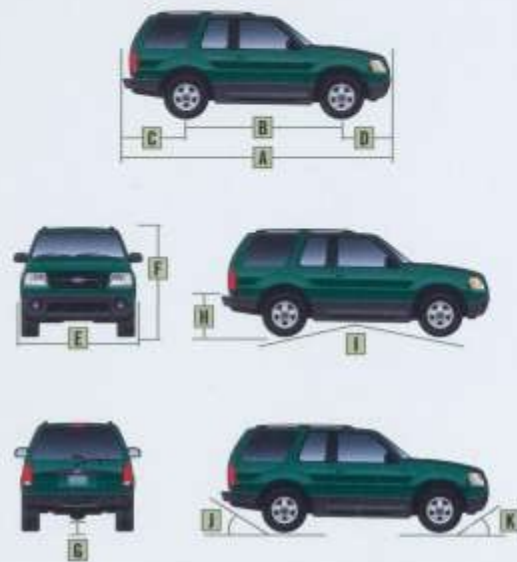
2 When the drive is long, the available **front power lumbar supports** are just what your back needs. And to take off the chill in a hurry, Explorer Sport also offers available **front heated seats**.

3 You always keep your cool, but how about those rear-seat passengers? Give them the option with available **rear-seat climate and audio controls** including headphone jacks. They're conveniently located at the rear of the center console for easy access.

4 Finally, you can go exploring and actually bring home all the treasures you find. Or take them all with you when you go. Explorer Sport's **71 cu. ft. of cargo space** (with rear seat folded down) lets you slide in gear as large as a bike. Thanks to the **50/50 split rear seat**, you can even fold down just one side to free up cargo space and still fit a friend in back.

*Always wear your safety belt and secure children in the rear seat.





| Exterior | 4x2/4x4 |
|---------------------------------|-------------|
| A. Overall length | 180.4" |
| B. Wheelbase | 101.8" |
| C. Overhang - rear | 44.0" |
| D. Overhang - front | 34.6" |
| E. Overall width | 70.2" |
| F. Height | 68.4"/68.3" |
| G. Ground clearance (rear axle) | 6.7" |
| H. Load floor height | 28.9"/29.0" |
| I. Ramp breakover angle | 22.9"/22.8" |
| J. Angle of departure | 23.1° |
| K. Angle of approach | 28.3° |

| Interior | |
|------------------------|-------|
| 1st row | |
| Head room | 39.4" |
| Shoulder room | 56.2" |
| Hip room | 53.0" |
| Leg room | 42.4" |
| 2nd row | |
| Head room | 38.9" |
| Shoulder room | 57.9" |
| Hip room | 43.6" |
| Leg room | 36.6" |
| Cargo (cu. ft.) | |
| Maximum cargo volume | 71.1 |
| Behind 2nd row | 35.3 |

STANDARD FEATURES

Mechanical

4.0L SOHC V6 engine
4-wheel power disc brakes with anti-lock braking system (ABS)
100,000-mile tune-up interval*
Battery saver
Body-on-frame construction
Electronic 2-speed shift-on-the-fly 4-wheel-drive system (4x4 models only)
Fuel tank - 16.8-gallon capacity
Power rack-and-pinion steering
Rear-wheel drive
Spare - Full-size steel wheel
Stabilizer bars - Front and rear
Suspension - Front: independent Short- and Long-Arm; rear: 2-stage leaf springs

Safety/Security

Airbags - Driver and front-passenger
Belt-Minder™ safety belt reminder
Fuel pump inertia shutoff switch
Headlamps-on alert chime
Height-adjustable shoulder safety belts - Front
Rear top tether anchors and lower anchors for child safety seats
Safety belt energy management retractors - Front
Safety belt pretensioners - Front
SecuriLock™ - Passive anti-theft system
Side intrusion door beams

Seating

Front cloth bucket seats with 2-way adjustable head restraints and tip/slide feature
Rear cloth 50/50 split-bench seat with 4-way adjustable head restraints - Folds flat

Interior

Air conditioning
Assist handles - 2 front
Center floor console with 4 cupholders, padded armrest, removable soft-pack storage bag and convenience clip
Floor mats - Color-keyed front and rear
Power door locks
Power lock switch in cargo area
Power points - 1 in front
Power windows - With one-touch-down driver's-side feature
Tachometer

Exterior

2nd-row flip-open windows
Privacy glass - Fixed rear quarter windows and liftglass
Rear defroster
Roof rails
Solar tinted glass - Windshield, front doors and 2nd-row flip glass
Trailer tow - Rear step bumper with Class II rating and 4-pin connector
Windshield wipers - Front: speed-sensitive intermittent with washer; rear: 2-speed intermittent with washer

*Under normal driving conditions with regular fluid and filter changes.

Competitive comparisons based on publicly available information and Ford certification data at time of printing. Some features discussed may be optional. Vehicles shown may contain optional equipment. Features shown may be offered only in combination with other options or subject to additional ordering requirements or limitations. Following publication of the catalog, certain changes in standard equipment, options and the like, or product delays, may have occurred which would not be included in these pages. Your Ford Dealer is the best source for up-to-date information. Ford Division reserves the right to change product specifications at any time without incurring obligations.

MODEL-SPECIFIC FEATURES/OPTIONS

| | XLS 4x2 or 4x4 | XLT 4x2 or 4x4 | XLT Premium 4x2 or 4x4 |
|---|----------------|----------------|------------------------|
| Mechanical | | | |
| 5-speed manual transmission | Standard | Standard | Standard |
| 5-speed automatic transmission | Standard | Standard | Standard |
| 16" 5-spoke cast aluminum wheels (16" steel spare) | Standard | Standard | Standard |
| 16" bright cast aluminum wheels (16" steel spare)* | Standard | Standard | Standard |
| P235/70R16 all-season BSW tires (XLT 4x2) | Standard | Standard | Standard |
| P235/70R16 all-season OWL tires (XLT 4x4, XLT Premium 4x2) | Standard | Standard | Standard |
| P235/70R16 all-season OWL tires (XLT 4x2) | Standard | Standard | Standard |
| P255/70R16 all-terrain OWL tires (4x4 models)* | Standard | Standard | Standard |
| Limited-slip rear axle | Standard | Standard | Standard |
| Seating | | | |
| Leather Seating Surfaces | Standard | Standard | Standard |
| Low-back front bucket seats with 2-way adjustable head restraints | Standard | Standard | Standard |
| 6-way power driver's seat | Standard | Standard | Standard |
| Heated driver and front-passenger seats | Standard | Standard | Standard |
| Driver and front-passenger power lumbar supports | Standard | Standard | Standard |
| Interior | | | |
| AM/FM stereo with single CD and 4 speakers (60-watt) | Standard | Standard | Standard |
| AM/FM premium stereo with single CD/cassette and 4 speakers (80-watt) | Standard | Standard | Standard |
| AM/FM Audiophile sound system with 6-disc in-dash CD player (290-watt) | Standard | Standard | Standard |
| Comfort Group | | | |
| Low-back front cloth bucket seats with 2-way adjustable head restraints | Standard | Standard | Standard |
| 6-way power driver's seat | Standard | Standard | Standard |
| Driver and front-passenger power lumbar supports | Standard | Standard | Standard |
| High-series floor console with rear climate/audio controls and headphone jacks (replaces standard center console) | Standard | Standard | Standard |
| Overhead console with outside temperature display and compass | Standard | Standard | Standard |
| Autolamp (automatic on/off headlamps) | Standard | Standard | Standard |
| Electrochromic auto-dimming rearview mirror | Standard | Standard | Standard |
| Convenience Group | | | |
| Autolock/relock | Standard | Standard | Standard |
| Leather-wrapped steering wheel | Standard | Standard | Standard |
| Remote keyless entry system with driver's door-mounted keypad | Standard | Standard | Standard |
| Speed control | Standard | Standard | Standard |
| Tilt steering wheel | Standard | Standard | Standard |
| Cargo shade | Standard | Standard | Standard |
| Security approach lamps in outside mirrors | Standard | Standard | Standard |
| Exterior | | | |
| Power moonroof | Standard | Standard | Standard |
| Power outside mirrors | Standard | Standard | Standard |
| Premium Sport Group | | | |
| 16" bright cast aluminum wheels (16" steel spare) | Standard | Standard | Standard |
| Fog lamps | Standard | Standard | Standard |
| Front tow hooks (4x4 models only) | Standard | Standard | Standard |
| P235/70R16 all-season OWL tires (4x2 models) | Standard | Standard | Standard |
| P255/70R16 all-terrain OWL tires (4x4 models) | Standard | Standard | Standard |
| Side step bars | Standard | Standard | Standard |

■ Standard □ Optional — Not Available

*Available as part of Premium Sport Group.

INTERIOR/EXTERIOR COMBINATIONS

| | Medium/Dark Pebble | Medium/Dark Flint |
|------------------------|--------------------|-------------------|
| XLS | | |
| Oxford White | Standard | Standard |
| Harvest Gold Metallic | Standard | Standard |
| Estate Green Metallic | Standard | Standard |
| True Blue Metallic | Standard | Standard |
| Black | Standard | Standard |
| XLT/XLT Premium | | |
| Oxford White | Standard | Standard |
| Harvest Gold Metallic | Standard | Standard |
| Zinc Yellow* | Standard | Standard |
| Red Fire Metallic* | Standard | Standard |
| Estate Green Metallic | Standard | Standard |
| Aspen Green Metallic | Standard | Standard |
| True Blue Metallic | Standard | Standard |
| Silver Birch Metallic | Standard | Standard |
| Black | Standard | Standard |

*New for 2003.

| | | |
|--|-----------------------|-----------------------|
| | Oxford White | Harvest Gold Metallic |
| | Zinc Yellow | Red Fire Metallic |
| | Estate Green Metallic | Aspen Green Metallic |
| | True Blue Metallic | Silver Birch Metallic |
| | Black | |

Ford uses clearcoat paint for beauty and protection. Colors shown are representative only. See your dealer for actual paint/trim options.



Medium/Dark Pebble Two-Tone Cloth
Standard on XLS



Premium Medium/Dark Pebble Two-Tone Cloth
Standard on XLT



Medium/Dark Pebble Two-Tone Leather
Available on XLT Premium



Medium/Dark Flint Two-Tone Cloth
Standard on XLS



Premium Medium/Dark Flint Two-Tone Cloth
Standard on XLT



Medium/Dark Flint Two-Tone Leather
Available on XLT Premium



16" 5-Spoke Cast Aluminum Wheel
Standard on XLS



16" 5-Spoke Cast Aluminum Wheel
Standard on XLT*



16" Bright Cast Aluminum Wheel
Standard on XLT Premium, optional on XLT
*Shown with OWL tire (available on 4x2, standard on 4x4).



4.0L SOHC V6

Horsepower: 203 @ 5250 rpm

Torque: 237 lb.-ft. @ 3000 rpm

Axle ratio: 3.73:1

| Towing capabilities* (lbs.): | 4x2 | 4x4 |
|------------------------------|------|------|
| Manual | 2940 | 2760 |
| Automatic | 5000 | 4820 |

*Maximum capabilities shown are for properly equipped vehicles with required equipment and a 150-lb. driver. Weight of additional options, equipment, passengers and cargo must be deducted from this weight. For additional information, see your Ford Dealer.

1 Add instant capacity with the **SportRack®** cargo box. It's made of durable ABS plastic.

2 The **rooftop frame-mount bike carrier** by Yakima® fits the roof rails. It features a padded locking downtube arm and cable guides to protect brake and shifter cables.

3 This **Yakima® kayak carrier** installs without tools on the roof rails and carries up to four kayaks. Requires tie-downs and crossbars (available separately).

4 Stand back. Way back. You can still start your Explorer Sport with the **remote start** accessory. It turns on the ignition from up to 500 ft. away.

5 No need to ask directions. The **satellite navigation system** uses global positioning satellites to track your vehicle, then guides you to your destination.

6 Milk on one side, eggs on the other. Keep your cargo separated and under control with the **interior cargo organizer**.



1



2



3



4



5



6

See your dealer for these and other great Ford Dealer-installed accessories.



www.fordvehicles.com

Get information on any Ford vehicle, print e-brochures or take a look at financing and leasing options. Ford owners can enjoy the benefits of **My Ford**, a private, owners-only area of fordvehicles.com, designed to provide a single, convenient area to manage vehicle information, including maintenance, financing and web services. Our website also offers details about European Delivery, the Pre-Owned Ford program, Ford Credit and more. There's a world of information, but only one address to remember, fordvehicles.com.

Environmentally Responsible

"**Tread Lightly!**" is an educational program designed to increase the awareness of land-use regulations and responsibilities in our wilderness areas. Ford joins the U.S. Forest Service and the Bureau of Land Management in encouraging you to preserve our national forests and other public and private lands by "treading lightly."



Proud Partners of America's National Parks

Ford Motor Company is a **Proud Partner of America's National Parks**. Ford is working closely with the National Park Foundation and the National Park Service to help develop innovative transportation and environmental solutions that enable visitors to enjoy National Parks without compromising their beauty.

Ford Credit and Red Carpet Lease

Many lease managers have completed several hours of training in a Red Carpet Lease program designed to make us the best in the business. We think you'll find a Red Carpet Lease the best way to lease.

Under the New Vehicle Limited Warranty, you'll receive Bumper-to-Bumper, no-deductible coverage on your new Ford vehicle for 3 years/36,000 miles. You'll also receive unlimited-mileage, no-deductible corrosion perforation coverage for five years. Ask your Ford Dealer for a copy of this warranty.

During its 3-year/36,000-mile limited warranty period, every new Ford vehicle includes the assurance and support of a 24-hour emergency Roadside Assistance program. Roadside Assistance includes such services as fuel delivery, tire changes, jump starts, and help when you are locked out of your vehicle. Ask your Ford Dealer for complete details about this program.

Complete information on our vehicle lineup is available on our website. To get more information, please visit us at www.fordvehicles.com. Likewise, to get details on various financing options available on your new Ford vehicle, please visit www.fordcredit.com. Doing so can give you a head start before talking to your Ford Dealer about financing your new Ford vehicle.

fordvehicles.com



FORD. NO BOUNDARIES. WHEN YOU LIVE WITH SPIRIT AND PASSION, THE POSSIBILITIES OF LIFE AND ACHIEVEMENT ARE LIMITLESS. THERE ARE *NO BOUNDARIES*. EVERY PRODUCT FORD MOTOR COMPANY DESIGNS AND BUILDS IS THE DIRECT RESULT OF 100 YEARS OF THAT SPIRIT AND PASSION. IT WAS PRESENT WHEN HENRY FORD FOUNDED THE COMPANY IN 1903 AND WHEN THE FIRST AUTOMOBILE ROLLED FROM HIS WORKSHOP. TODAY, IT IS MORE ALIVE THAN EVER. THERE ARE *NO BOUNDARIES* TO OUR ENDLESS DRIVE TO TURN A NO INTO A RESOUNDING YES. TO GO BEYOND WHAT WE THOUGHT WAS POSSIBLE. TO CREATE AN ARRAY OF VEHICLES THAT HELP PROVIDE A PLACE WHERE FAMILY AND FRIENDS CAN CONNECT WITH EACH OTHER AS WELL AS WITH THEIR COMMUNITY. AND THERE ARE *NO BOUNDARIES* TO OUR DEDICATION - STRIVING TO BRING YOU THE HIGHEST QUALITY, MOST EXCITING, BEST ENGINEERED, MOST RELIABLE PRODUCTS IN THE WORLD.



Ford Motor Company
100 YEARS