



**10**  
CAR-DRIVER  
**best**

4 YEARS  
IN A ROW



03 FOCUS



## CONTENTS

1 FOCUS ZX5 3 FOCUS ZX3 5 FOCUS SEDAN 7 FOCUS WAGON 9 INTERIOR  
11 AUDIO/FEATURES 13 SAFETY/CONTROL 14 AWARDS 15 SPECS  
18 COLOR AND TRIM 19 WHEELS/ENGINES 20 DEALER ACCESSORIES

# FRESHLY FUNCTIONAL

CLEAR COMPUTERS. FLAT SCREENS. MINI CELL PHONES. EVERYDAY OBJECTS SEEM TO BE LOOKING A LOT MORE INTERESTING THESE DAYS. THIS CAN GO FOR THE BIGGER THINGS IN LIFE, TOO, LIKE YOUR CAR. CHECK OUT THE FOCUS ZX5. IT'S A LITTLE EUROPEAN, A LITTLE HI-TECH. DEFINITELY DIFFERENT. CLEVERLY COOL.

AND FOCUS DOESN'T JUST LOOK LIKE A KICKIN' RIDE. IT HANDLES LIKE IT, TOO, THANKS TO FRONT AND REAR STABILIZER BARS AND — SURPRISE — A FULLY INDEPENDENT REAR SUSPENSION. INSIDE, ZX5 OFFERS A TOTALLY STRESS-FREE ENVIRONMENT. WITH ACCESSIBILITY AT A FIVE-DOOR MAXIMUM, ALL YOUR FRIENDS CAN PILE IN AND YOUR STUFF STILL STASHES NICELY THROUGH THE BACK. AN AVAILABLE AUDIOPHILE SOUND SYSTEM WITH A 6-DISC IN-DASH CD PLAYER WILL KEEP YOU ENTERTAINED. NOTHING LEFT TO DO BUT KNOCK OPEN THE MOONROOF AND TAKE IT ALL IN (STANDARD ON ZX5 PREMIUM; AVAILABLE ON COMFORT). HOW'S THAT FOR PUTTING THE FUN IN FUNCTIONAL?



FOCUS ZX5 COMFORT



# FOCUS ZX5



# A TECHNOLOGICAL TRIP

TECHNOLOGY. YOU GOTTA LOVE IT. IT KEEPS GETTING BETTER, MAKING LIFE A LITTLE EASIER AND A LOT MORE FUN. SAME GOES FOR FOCUS ZX3. ITS AVAILABLE SINGLE CD/MP3 SYSTEM PLAYS UP TO 254 CONTINUOUS MP3 TRACKS TO SOOTHE YOUR SOUL. REAR SEAT HEAT DUCTS WARM YOUR SPIRIT. AND AVAILABLE ANTI-LOCK BRAKES AND TRACTION CONTROL EASE YOUR MIND. CAN YOU FEEL THE KARMA?

ZX3 HAS LOTS OF IT. AND LOTS OF ROOM. YES, FIVE PEOPLE CAN DEFINITELY CHILL IN TRUE COMFORT IN THIS MOST ACCOMMODATING FOCUS. SPORTY FRONT BUCKET SEATS WITH COOL NEW FABRIC LOOK AND FEEL ZEN-LIKE. AND ITS THREE DOORS MEAN THREE TIMES THE ACCESS FOR GEAR, PACKS AND EATS. SO LOAD IN YOUR STUFF. GRAB YOUR FRIENDS. GO WHERE YOU WANNA GO. AND HAVE FUN GETTING THERE. THIS SPORTY SCOOT TAKES ITS 130 HORSEPOWER VERY SERIOUSLY. ZX3 PREMIUM AND POWER PREMIUM ARE PREPPED WITH STANDARD FOG LAMPS, PLUS 16" ALUMINUM WHEELS AND TIRES THAT NOT ONLY LOOK GOOD, BUT REALLY GRAB THE PAVEMENT. GETTIN' THE IDEA? WITH ZX3, YOU CAN ACTUALLY ACHIEVE TOTAL HARMONY. AND GET LOTS OF TRIPPIN' TECHY STUFF, TOO.



FOCUS ZX3



FOCUS ZX3



# GO TO TOWN

LIFE CAN GET PRETTY BUSY. SOMETIMES IT SEEMS YOU DO MORE OF WHAT YOU HAVE TO DO THAN WHAT YOU WANT TO DO. BUT SOONER OR LATER THE WEEKEND ROLLS AROUND AND IT'S TIME TO GET OUT AND DO WHAT REALLY MATTERS. WHEREVER YOU CHOOSE TO GO, FOCUS IS THE RIDE TO GET YOU THERE.

TRICKED OUT WITH A REAR SPOILER, 16" 5-SPOKE ALUMINUM WHEELS, FOG LAMPS AND AVAILABLE LEATHER SEATING SURFACES, FOCUS ZTS HAS PLENTY TO SHOW OFF. YOUR FRIENDS AND FAMILY WILL WANT IN, AND THEY'LL FIT, TOO. FIVE IN TOTAL. SO GO PICK 'EM UP AND HAVE FUN WHILE YOU GET THE CHANCE. BUT JUST LIKE YOU, THIS FOCUS SEDAN ALSO HAS A RESPONSIBLE SIDE. WITH AVAILABLE SIDE-IMPACT AIRBAGS, ANTI-LOCK BRAKES AND THE ADVANCETRAC™ ELECTRONIC STABILITY ENHANCEMENT SYSTEM, FOCUS PROVES IT'S GOT A LOT MORE GOING FOR IT THAN JUST GOOD LOOKS. IT'S GOT BRAINS, TOO.



FOCUS SE SEDAN



# FOCUS SEDAN



# SPACED OUT

THEY SAY EVERYBODY NEEDS ABOUT 3 FEET OF PERSONAL SPACE. NOW YOU'VE GOT A LOT MORE. 131 CU. FT. OF IT, TO BE EXACT. PACK UP THE BAGS AND SLIDE 'EM INTO YOUR FOCUS ZTW WAGON. OR WAX UP THE BOARDS, POINT TOWARD THE WAVES AND DRIVE. MAYBE GATHER UP BATS, BALLS AND BASES, PICK UP YOUR INFELD, AND SPEND THE DAY AT PLAY. SEE, YOU'VE

GOT THE ROOM. FOR STUFF. FOR KIDS. FOR FRIENDS. NOW, HOW ABOUT A LITTLE SOMETHING FOR YOU - LIKE A STANDARD 4-SPEED AUTOMATIC TRANSMISSION, A TILT AND TELESCOPING STEERING WHEEL, AVAILABLE HEATED FRONT SEATS AND OUTSIDE MIRRORS, OR AN AVAILABLE SPORT GROUP THAT INCLUDES A 6-DISC IN-DASH CD PLAYER, DRIVER'S-SIDE LUMBAR, COOL WHEELS, FOG LAMPS AND MORE? NOW YOU'VE GOT ONE SERIOUSLY HOT WAGON. IT'S OFFICIAL: YOU ARE THE MASTER OF YOUR OWN DOMAIN - ALL 131 CU. FT. OF IT.



FOCUS SE WAGON



## FOCUS WAGON





TAKE THE NIP (AND ICE) OUT OF JACK FROST WITH HEATED FRONT SEATS AND HEATED POWER SIDE MIRRORS. THIS COOL LITTLE WEATHER PACKAGE IS AVAILABLE ON ZX5 PREMIUM, ZTS SEDAN AND ZTW WAGON.

## IT'S ALL ABOUT INNER BEAUTY

LOTS OF EFFORT AND PLENTY OF SMARTS WENT INTO ENSURING THAT THE DRIVER AND FOUR ADULTS COULD COMFORTABLY TAKE PART IN THE JOY THAT IS FOCUS. THAT'S WHY THE INSTRUMENT PANEL IS CLEANLY LAID OUT AND INTERESTING TO LOOK AT. AND SOMEBODY UNDERSTOOD THAT PEOPLE COME IN ALL SHAPES AND SIZES, SO THE DRIVER'S SEAT NOT ONLY MAKES ALL THE STANDARD MOVES LIKE BACK/FORTH AND RECLINE, BUT IT ALSO MOVES UP AND DOWN. AND THE SEATS LOOK GOOD, TOO - CHECK OUT THE CLOTH TRIM ON ZX3 AND ZX5 (RIGHT) AND THE SHARP, AVAILABLE LEATHER SEATING SURFACES (SHOWN ON ZTS, OPPOSITE PAGE). TO TOP IT OFF: A SPLIT-FOLD REAR SEAT THAT FOLDS FLAT AND PLENTY OF STORAGE NOOKS ARE STANDARD, TO GIVE PEOPLE THE SPACE THEY CAN REALLY USE.



## INTERIOR



# WHAT? I CAN'T HEAR YOU

TURN IT UP, WAY UP. FOCUS LETS YOU CHOOSE BETWEEN CDs, CASSETTES OR MP3-FORMATTED MUSIC TO MAKE THE MOST OF THE TUNES YOU HAVE. YOUR OPTIONS INCLUDE A SINGLE CD/MP3 PLAYER OR A 6-DISC IN-DASH CD PLAYER. OF COURSE, YOUR REAR PASSENGERS WILL ENJOY THE TUNES, TOO, WITH SPEAKERS POSITIONED TO DELIVER HIGH-FIDELITY SOUND TO ALL EARS ON BOARD. THERE'S EVEN AN AUDIOPHILE UPGRADE FOR INCREDIBLE BASS. SO HIT THE BEAT, AND CRUISE ON INTO IT.



A: GOT A LOT OF CDs? BRING 'EM ALONG. AN AVAILABLE 6-DISC IN-DASH CD PLAYER LETS YOU LOAD 6 DISCS RIGHT INTO THE DASH. RAISE IT UP A NOTCH WITH THE AUDIOPHILE SYSTEM. IT INCLUDES A 'THUMPIN' SUB-WOOFER AND HIGH-FIDELITY AMPLIFIER.

B: YOU'RE LOOKING AT THE SOURCE. NOTHING BUT CLEAR, THROATY BASS RIPS THROUGH THIS SUB-WOOFER. IT'S PART OF THE AUDIOPHILE SYSTEM AVAILABLE IN SELECT MODELS OF THE ZX3, ZX5 AND SEDAN.

C: DOWNLOAD ALL THE MUSIC YOU WANT. THE SINGLE-DISC CD AND MP3 PLAYER GIVES YOU MILES AND MILES OF CONTINUOUS PLAY. THE SYSTEM INCLUDES A DIGITAL CLOCK AND FOUR SPEAKERS. IT'S STANDARD ON SOME MODELS AND OPTIONAL ON OTHERS.

D: WHEN YOU DON'T HAVE THEM, YOU SURE WISH YOU DID. WE'RE TALKIN' CUPHOLDERS. TO LEND A HELPING HAND, FOCUS HAS TWO UP FRONT AND A CONVENIENT REAR CUPHOLDER AT THE BACK OF THE CENTER CONSOLE.

E: YOU'LL NEVER HAVE TO LEAVE YOUR BOARD AT HOME AGAIN WITH THE 60/40 SPLIT-FOLD REAR SEAT. STANDARD ON ALL FOCUS MODELS.

F: POWER WINDOWS WITH A ONE-TOUCH-DOWN DRIVER'S-SIDE FEATURE ARE MIGHTY HANDY. AND STANDARD ON MOST MODELS.

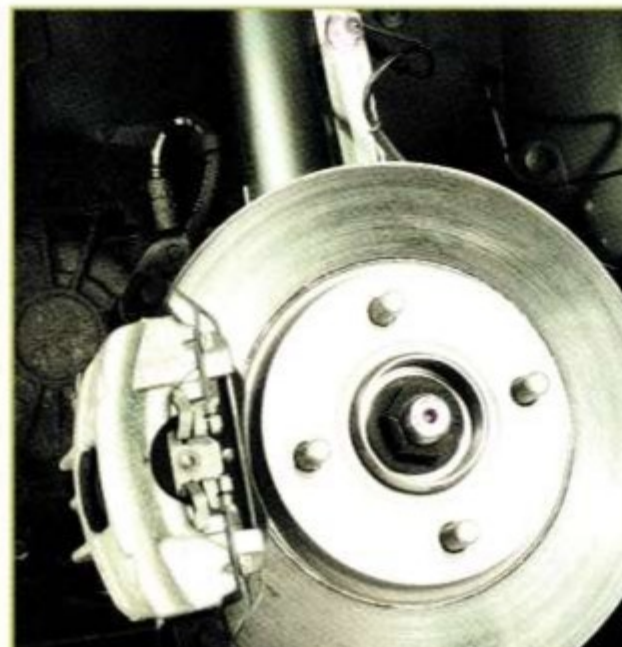
G: TURN UP THE TUNES AND POP THE TOP SO EVERYONE CAN ENJOY THE SUN AND SOUNDS. A POWER RETRACTABLE MOONROOF IS STANDARD ON ZX5 PREMIUM, OPTIONAL ON SEVERAL OTHER MODELS.

## AUDIO/FEATURES



# A WHOLE LOTTA PROTECTION

YOU'VE HEARD IT BEFORE: THE WHOLE IS GREATER THAN THE SUM OF ITS PARTS. SURE APPLIES HERE. FOCUS INCLUDES A NUMBER OF STANDARD AND AVAILABLE SAFETY FEATURES TO HELP PROTECT YOU. LIKE THE PERSONAL SAFETY SYSTEM,<sup>™</sup> STANDARD ON EVERY FOCUS MODEL. IT'S SIX TECHNOLOGIES THAT ALL ADD UP TO ONE BIG PEACE OF MIND. IN THE EVENT OF A COLLISION, THE SYSTEM USES SENSORS TO MEASURE CERTAIN OCCUPANT CONDITIONS AND THE SEVERITY OF IMPACT, THEN IT DETERMINES HOW TO PROTECT THE FRONT OCCUPANTS — ALL IN A MATTER OF MILLISECONDS. FOCUS ALSO OFFERS AVAILABLE SIDE-IMPACT AIRBAGS,\* THE BUMPERS EXCEED GOVERNMENT STANDARDS, AND FOCUS HAS FRONT AND REAR CRUSH ZONES, PLUS SIDE INTRUSION DOOR BEAMS DESIGNED TO HELP PROTECT DURING IMPACTS. THERE ARE AVAILABLE ANTI-LOCK BRAKES, TRACTION CONTROL, AND THE ADVANCETRAC<sup>™</sup> ELECTRONIC STABILITY ENHANCEMENT SYSTEM TO HELP YOU AVOID AN ACCIDENT IN THE FIRST PLACE. AND FOR PEACE OF MIND: A STANDARD ANTI-THEFT SYSTEM AND BATTERY SAVER FEATURE THAT SHUTS OFF YOUR INTERIOR LIGHTS IF YOU LEAVE THEM ON. THAT'S BIG.



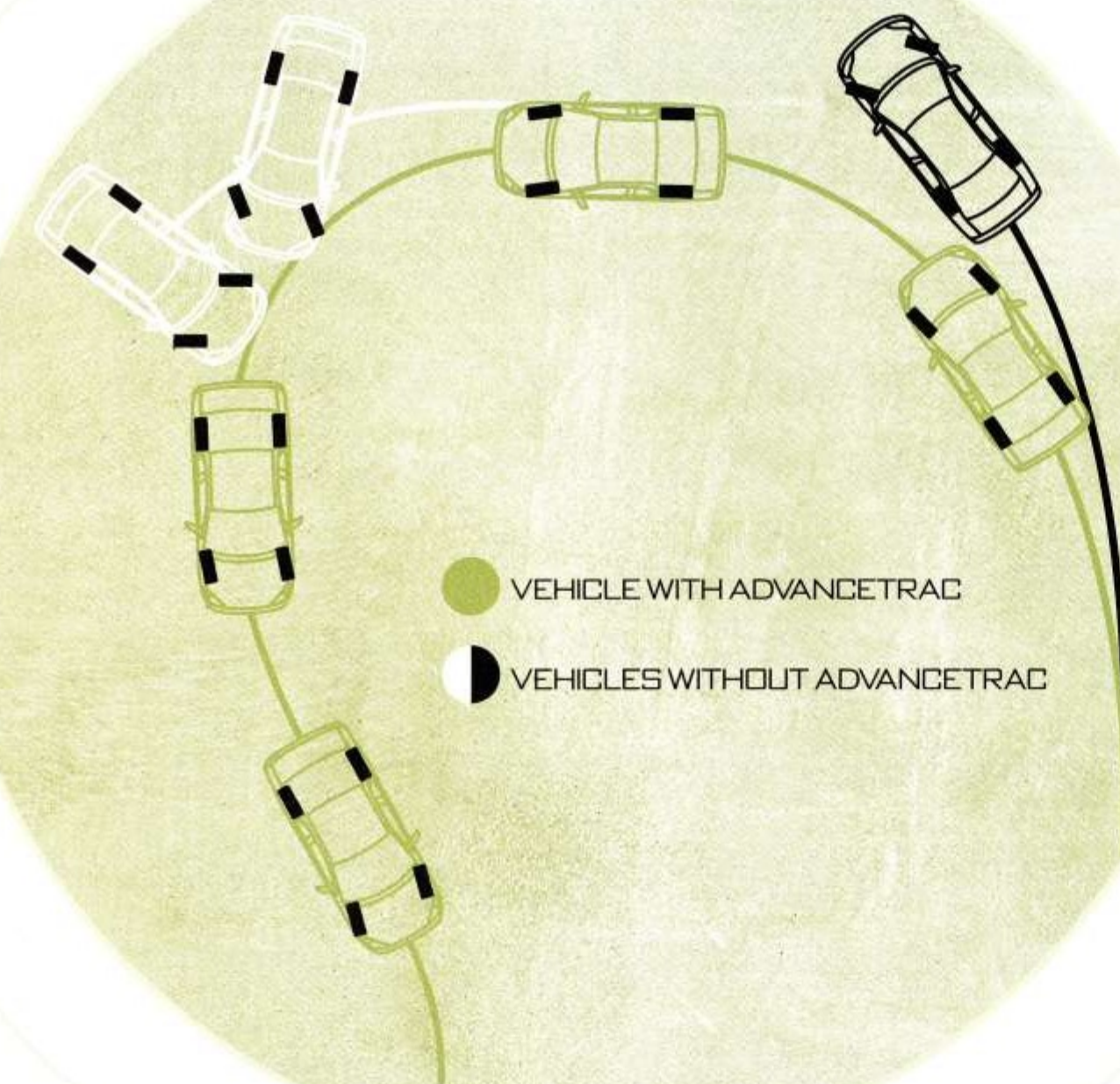
A: LOAD 'EM UP. THE LATCH SYSTEM'S UPPER TETHER AND LOWER ANCHORS IN OUTBOARD REAR SEAT POSITIONS MAKE IT EASY TO SECURE A CHILD SAFETY SEAT.

B: HIT THE BRAKES AND STEER. AVAILABLE ANTI-LOCK BRAKES ON EVERY FOCUS MODEL HELP PREVENT WHEEL LOCKUP, EVEN IN HARD BRAKING SITUATIONS.

C: A FULLY INDEPENDENT, SHORT- AND LONG-ARM REAR SUSPENSION IS NOT ONLY FUN, IT'S FUNCTIONAL, TOO. SINCE THE WHEELS CAN RESPOND INDEPENDENTLY TO BUMPS AND DIPS IN THE ROAD, IT DELIVERS RESPONSIVE HANDLING AND MAXIMIZES TRACTION TO HELP KEEP YOU FEELING IN CONTROL.



\*ALWAYS WEAR YOUR SAFETY BELT AND SECURE CHILDREN IN THE REAR SEAT



D: WANT ENHANCED VEHICLE CONTROL? GET ADVANCETRAC.<sup>™</sup> IMAGINE THAT THIS PAGE IS A SLIPPERY SURFACE — LIKE ICE, LOOSE GRAVEL OR DIRT. LOOK AT THE BLACK VEHICLE (NOT EQUIPPED WITH ADVANCETRAC TECHNOLOGY). AS THE DRIVER TAKES THE TURN, HE UNDERSTEEPS AROUND THE CURVE. IF THE TIRES CAN'T MAINTAIN COMPLETE TRACTION, THE VEHICLE MAY SLIDE OFF THE ROAD. THE DRIVER OF THE CAR IN WHITE OVERSTEEPS, AND THE VEHICLE POTENTIALLY SPINS OUT. THE CAR IN GREEN IS ASSISTED BY THE ADVANCETRAC SYSTEM. THIS ADVANCED TECHNOLOGY HELPS KEEP THE CAR ON COURSE THROUGH THE SLIPPERY CURVE. HOW? IT CONSTANTLY MONITORS THE DRIVER'S INPUT AND THE ACTUAL VEHICLE RESPONSE. IF THERE'S A DISCREPANCY, IT AUTOMATICALLY ADJUSTS THE BRAKING AND THROTTLE TO HELP "CORRECT" THE VEHICLE'S MOTION. THE SYSTEM INCLUDES SENSORS, PLUS ABS, TRACTION CONTROL AND REAR DISC BRAKES. AND IT'S AVAILABLE ON SELECT FOCUS MODELS.\*

E: FOR THAT ADDED MEASURE OF SAFETY, SIDE-IMPACT AIRBAGS ARE AVAILABLE ON ALL MODELS.

## SAFETY/CONTROL

\*REMEMBER THAT EVEN ADVANCED TECHNOLOGY CANNOT OVERCOME THE LAWS OF PHYSICS. IT'S ALWAYS POSSIBLE TO LOSE CONTROL OF A VEHICLE DUE TO INAPPROPRIATE DRIVER INPUTS FOR THE CONDITIONS. WHEN ADVANCETRAC ENGAGES, IT IS AN INDICATION THAT AT LEAST SOME OF THE TIRES HAVE EXCEEDED THEIR ABILITY TO GRIP THE ROAD, WHICH MAY CAUSE LOSS OF CONTROL.



## AWARDS



"10BEST," 4 YEARS IN A ROW.

CAR AND DRIVER



"2002 ALL-STAR FOR BEST SMALL CAR."

AUTOMOBILE MAGAZINE



"AMERICA'S BEST ECONOMY CAR  
AND FIRST NEW CAR."

AUTOWEEK'S READERS

"BEST-IN-CLASS UNDER \$16,000."

KIPLINGER'S PERSONAL FINANCE

\*BASED ON 2002 MODELS.

## DIMENSIONS

Exterior	ZX3	ZX5
Wheelbase	103.0"	103.0"
Overall length	168.1"	168.1"
Overall width	67.0"	67.0"
Overall height	56.3"	56.3"
Liftover height	26.3"	26.3"

Interior		
1st row		
Head room	39.1"	39.1"
Shoulder room	53.5"	53.5"
Hip room	49.4"	49.4"
Leg room	43.1"	43.1"

2nd row		
Head room	38.5"	38.5"
Shoulder room	53.5"	53.6"
Hip room	47.7"	50.7"
Leg room	34.7"	34.7"

Passenger/Luggage Capacity (cu. ft.)		
Passenger volume	94.4	94.4
Luggage capacity (rear seat up)	18.6	18.6
Total interior volume	113.0	113.0

Exterior	Sedan	Wagon
Wheelbase	103.0"	103.0"
Overall length	174.9"	178.2"
Overall width	67.0"	67.0"
Overall height	56.3"	56.9"
Liftover height	28.2"	22.0"

Interior		
1st row		
Head room	39.1"	39.1"
Shoulder room	53.5"	53.5"
Hip room	49.4"	49.4"
Leg room	43.1"	43.1"

2nd row		
Head room	38.3"	39.8"
Shoulder room	53.6"	53.6"
Hip room	50.7"	50.7"
Leg room	34.7"	34.7"

Passenger/Luggage Capacity (cu. ft.)		
Passenger volume	94.3	95.9
Luggage capacity (rear seat up)	13.8	35.1
Total interior volume	108.1	131.0

## SPECIFICATIONS 15

### STANDARD FEATURES

#### Mechanical

100,000-mile tune-up interval\*

Battery saver

Front-wheel drive

Fuel tank – 13.2-gallon capacity

Maintenance-free battery

Power front disc/rear drum brakes

Power rack-and-pinion steering

Stabilizer bar – Front

Stainless steel exhaust system

Suspension – Front: independent MacPherson strut; rear: Control Blade Short- and Long-Arm (SLA) independent

#### Safety/Security

Personal Safety System™ for driver and right-front passenger – With dual-stage/dual-threshold airbags,\*\* safety belt pretensioners, energy management retractors, safety belt usage sensors, driver's-seat position sensor, crash severity sensor, and restraint control module

Belt-Minder™ safety belt reminder

Bumpers – 5-mph energy-absorbing

Emergency trunk release – Manual

LATCH – Lower anchors and tether anchors for child safety seats (rear outboard positions)

Low fuel warning light

Safety belts – 3-point for all seating positions

"Safety cell" unitized body construction

SecuriLock™ – Passive anti-theft system

Shoulder belt height adjusters – Front outboard positions

Side intrusion door beams

#### Seating

60/40 split-fold rear seat with flip-up rear seat cushion (split flip-up rear cushion on ZX5 Premium)

Height-adjustable driver's seat

#### Interior

Assist handles – Front and rear

Center floor console – Full-length

Child safety locks on rear doors (not applicable on 3-door models)

Cupholders – 2 front, 1 rear

Dome light with theater-dimming feature

Interior decklid/liftgate release

Map pockets – Front doors

Power point – Front

Rear seat heat ducts

Trip odometer

Visor vanity mirrors

#### Exterior

Bumpers – Body color

Headlamps – Aerodynamic halogen

Rear defroster

Solar tinted glass

Windshield wipers – Front: intermittent; rear: wiper/washer (n/a on sedan models)

\*Under normal driving conditions with regular fluid and filter changes.

\*\*Always wear your safety belt and secure children in the rear seat.



## MODEL-SPECIFIC FEATURES/OPTIONS

ZX3			
ZX3 Premium			
ZX3 Power Premium			
Mechanical			
■	■	■	2.0L DOHC Zetec 4-cylinder engine
■	■	■	5-speed manual transaxle
—	□	□	4-speed electronic automatic transaxle with overdrive lockout
■	—	—	15" 5-spoke aluminum wheels
—	■	■	16" 5-spoke aluminum wheels
■	—	—	P195/60R15 all-season BSW tires
—	■	■	P205/50R16 all-season BSW tires
■	■	■	Stabilizer bar – Rear
Safety/Security			
—	—	□	AdvanceTrac™ electronic stability enhancement system – Includes ABS, Traction Control and rear disc brakes
—	□	□	All-Speed Traction Control*
□	□	□	Anti-lock braking system (ABS) with electronic brake force distribution (EBD)
—	—	□	Perimeter alarm system
—	—	■	Remote keyless entry system with 2 key fobs
□	□	□	Side-impact airbags**
Seating			
■	■	■	Cloth sport front bucket seats with adjustable head restraints, passenger's-side tip/slide forward feature and map pocket; includes unique ZX3/ZX5 fabric
Interior			
□	■	■	Air conditioning
■	—	—	AM/FM stereo with single CD player, clock and 4 speakers
—	■	□	AM/FM stereo with single CD and MP3 player, clock and 4 speakers
—	□	■	AM/FM stereo with 6-disc in-dash CD player, clock and 4 speakers
—	□	□	Audiophile sound system upgrade with 6-disc in-dash CD player, 2-way speakers, amplifier and sub-woofer
■	■	■	Floor mats – Front
—	■	■	Front center armrest with storage
—	■	■	Leather-wrapped steering wheel
—	—	■	Power door locks
—	—	■	Power windows – With one-touch-down driver's-side feature
—	■	■	Speed control
■	■	■	Tachometer
—	■	■	Tilt/telescoping steering wheel
Exterior			
■	■	■	Bodyside moldings – Black
—	■	■	Fog lamps
■	■	—	Mirrors – Manual remote, dual black
—	—	■	Mirrors – Power remote, dual black
—	—	□	Power moonroof

■ Standard □ Optional — Not Available

Some features discussed may be optional. Vehicles shown may contain optional equipment. Features shown may be offered only in combination with other options or subject to additional ordering requirements or limitations. Following publication of the catalog, certain changes in standard equipment, options and the like, or product delays, may have occurred which would not be included in these pages. Your Ford Dealer is the best source for up-to-date information. Ford Division reserves the right to change product specifications at any time without incurring obligations.

ZX5			
ZX5 Comfort			
ZX5 Premium			
Mechanical			
■	■	■	2.0L DOHC Zetec 4-cylinder engine
■	■	■	5-speed manual transaxle
□	□	□	4-speed electronic automatic transaxle with overdrive lockout
■	■	—	15" multi-spoke aluminum wheels
—	□	■	16" 5-spoke aluminum wheels
■	■	—	P195/60R15 all-season BSW tires
—	—	■	P205/50R16 all-season BSW tires
■	■	■	Stabilizer bar – Rear
Safety/Security			
—	—	□	AdvanceTrac™ electronic stability enhancement system – Includes ABS, Traction Control and rear disc brakes
□	□	□	All-Speed Traction Control*
□	□	□	Anti-lock braking system (ABS) with electronic brake force distribution (EBD)
□	□	□	Perimeter alarm system
■	■	■	Remote keyless entry system with 2 key fobs
□	□	□	Side-impact airbags**
Seating			
■	■	■	Cloth sport front bucket seats with adjustable head restraints and map pocket; includes unique ZX3/ZX5 fabric
—	—	□	Leather seating surfaces
Interior			
■	■	■	Air conditioning
■	■	□	AM/FM stereo with single CD and MP3 player, clock and 4 speakers
—	□	□	AM/FM stereo with 6-disc in-dash CD player, clock and 4 speakers
—	□	□	Audiophile sound system upgrade with 6-disc in-dash CD player, 2-way speakers, amplifier and sub-woofer
■	■	■	Floor mats – Front and rear
■	■	■	Front center armrest with storage
—	■	■	Leather-wrapped steering wheel
■	■	■	Power door locks
■	■	■	Power windows – With one-touch-down driver's-side feature
—	■	■	Speed control
■	■	■	Tachometer
—	■	■	Tilt/telescoping steering wheel
—	—	□	Weather Package
			- Heated front seats
			- Heated power outside mirrors
Exterior			
■	■	■	Bodyside moldings – Black on ZX5, color-keyed on ZX5 Comfort/Premium
—	■	■	Fog lamps
■	■	■	Mirrors – Power remote, dual black
—	□	□	Power moonroof

\*Requires ABS. \*\*Always wear your safety belt and secure children in the rear seat.

Sedan LX			
Sedan LX Premium			
Sedan SE			
Sedan SE Comfort			
Sedan ZTS			
Mechanical			
■	■	■	2.0L SOHC 4-cylinder engine with split-port induction
—	—	□	2.0L DOHC Zetec 4-cylinder engine*
■	■	■	5-speed manual transaxle
—	□	□	4-speed electronic automatic transaxle with overdrive lockout
■	—	—	14" steel wheels with bolt-on-appearance wheelcovers
—	■	■	15" 5-spoke aluminum wheels
—	—	■	16" 5-spoke aluminum wheels
■	■	—	P185/65R14 all-season BSW tires
—	—	■	P195/60R15 all-season BSW tires
—	—	■	P205/50R16 all-season BSW tires
—	—	■	Stabilizer bar – Rear
Safety/Security			
—	—	□	AdvanceTrac™ electronic stability enhancement system – Includes ABS, Traction Control and rear disc brakes
—	—	□	All-Speed Traction Control**
□	□	□	Anti-lock braking system (ABS) with electronic brake force distribution (EBD)
—	—	□	Perimeter alarm system
—	—	■	Remote keyless entry system with 2 key fobs
□	□	□	Side-impact airbags†
Seating			
■	■	■	Cloth front low-back bucket seats with adjustable head restraints and map pocket
—	—	□	Leather seating surfaces
—	—	■	Lumbar support – Driver's-side manual
Interior			
—	■	■	Air conditioning
■	■	—	AM/FM stereo with cassette player, clock and 4 speakers
—	■	■	AM/FM stereo with single CD and MP3 player, clock and 4 speakers
□	□	—	AM/FM stereo with single CD player, clock and 4 speakers
—	—	□	AM/FM stereo with 6-disc in-dash CD player, clock and 4 speakers
—	—	□	Audiophile sound system upgrade with 6-disc in-dash CD player, 2-way speakers, amplifier and sub-woofer
■	■	■	Floor mats – Front
—	—	■	Floor mats – Rear
—	■	■	Front center armrest with storage
—	—	■	Leather-wrapped steering wheel
—	—	■	Power door locks
—	—	■	Power windows – With one-touch-down driver's-side feature
—	—	■	Speed control
—	—	■	Tachometer
—	—	■	Tilt/telescoping steering wheel
—	—	□	Weather Package
			- Heated front seats
			- Heated power outside mirrors
Exterior			
■	■	—	Bodyside moldings – Black
—	—	■	Bodyside moldings – Color-keyed
—	—	■	Fog lamps
■	■	—	Mirrors – Manual remote, dual black
—	—	■	Mirrors – Power remote, dual black
—	—	□	Power moonroof
—	—	■	Rear spoiler

■ Standard □ Optional — Not Available

\*Includes rear stabilizer bar. \*\*Requires ABS and Zetec engine. †Always wear your safety belt and secure children in the rear seat.

Wagon SE			
Wagon ZTW			
Mechanical			
■	■	■	2.0L DOHC Zetec 4-cylinder engine
□	□	□	5-speed manual transaxle
■	■	■	4-speed electronic automatic transaxle with overdrive lockout
■	■	■	15" multi-spoke aluminum wheels
■	■	■	P195/60R15 all-season BSW tires
■	■	■	Stabilizer bar – Rear
Safety/Security			
—	□	□	AdvanceTrac™ electronic stability enhancement system – Includes ABS, Traction Control and rear disc brakes
□	□	□	All-Speed Traction Control††
□	□	□	Anti-lock braking system (ABS) with electronic brake force distribution (EBD)
□	□	□	Perimeter alarm system
■	■	■	Remote keyless entry system with 2 key fobs
□	□	□	Side-impact airbags†
Seating			
■	■	■	Cloth front low-back bucket seats with adjustable head restraints and map pocket
—	□	□	Leather seating surfaces‡
Interior			
■	■	■	Air conditioning
■	■	■	AM/FM stereo with single CD and MP3 player, clock and 4 speakers
—	□	□	AM/FM stereo with 6-disc in-dash CD player, clock and 4 speakers‡‡
■	■	■	Floor mats – Front and rear
■	■	■	Front center armrest with storage
■	■	■	Power door locks
■	■	■	Power windows – With one-touch-down driver's-side feature
—	■	■	Speed control
—	■	■	Tilt/telescoping steering wheel
—	□	□	Weather Package
			- Heated front seats
			- Heated power outside mirrors
Exterior			
■	■	■	Bodyside moldings – Color-keyed
■	■	■	Mirrors – Power remote, dual black
—	□	□	Power moonroof
■	■	■	Roof rack
—	□	□	Sport Group
			- 16" 5-spoke aluminum wheels
			- P205/50R16 all-season BSW tires
			- AM/FM stereo with 6-disc in-dash CD player, clock and 4 speakers
			- Driver's-side lumbar support
			- Fog lamps
			- Leather-wrapped steering wheel
			- Rear cargo area cover
			- Tachometer

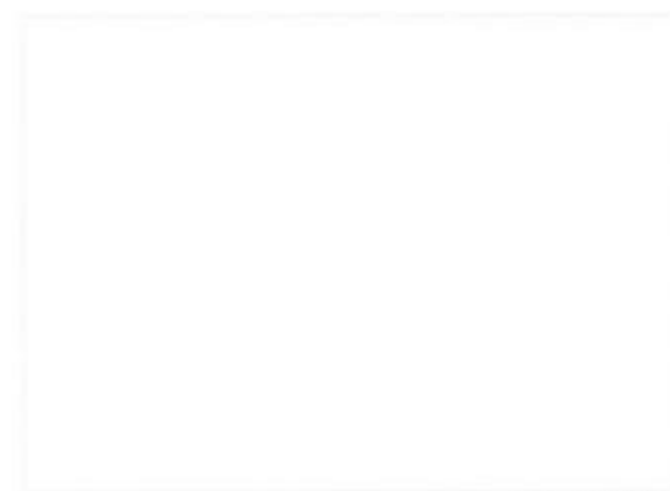
††Requires ABS and includes tachometer. ‡Requires Sport Group. ‡‡Available only as part of Sport Group.



## INTERIOR/EXTERIOR COMBINATIONS

Medium Parchment*	
Medium Graphite	
Dark Charcoal	
ZX3	
<input checked="" type="checkbox"/>	Cloud 9 White
<input checked="" type="checkbox"/>	Egg Yolk Yellow
<input checked="" type="checkbox"/>	Infra-Red**
<input checked="" type="checkbox"/>	Sangria Red Metallic
<input checked="" type="checkbox"/>	Grabber Green Metallic**
<input checked="" type="checkbox"/>	French Blue Metallic**†
<input checked="" type="checkbox"/>	Twilight Blue Metallic
<input checked="" type="checkbox"/>	CD Silver Metallic
<input checked="" type="checkbox"/>	Liquid Grey Metallic**
<input checked="" type="checkbox"/>	Pitch Black
ZX5	
<input checked="" type="checkbox"/>	Cloud 9 White
<input checked="" type="checkbox"/>	Egg Yolk Yellow
<input checked="" type="checkbox"/>	Infra-Red**
<input checked="" type="checkbox"/>	Sangria Red Metallic
<input checked="" type="checkbox"/>	Grabber Green Metallic**
<input checked="" type="checkbox"/>	French Blue Metallic**†
<input checked="" type="checkbox"/>	Twilight Blue Metallic
<input checked="" type="checkbox"/>	CD Silver Metallic
<input checked="" type="checkbox"/>	Liquid Grey Metallic**
<input checked="" type="checkbox"/>	Pitch Black
Sedan	
<input checked="" type="checkbox"/>	Cloud 9 White
<input checked="" type="checkbox"/>	Arizona Beige Metallic†
<input checked="" type="checkbox"/>	Infra-Red**
<input checked="" type="checkbox"/>	Sangria Red Metallic
<input checked="" type="checkbox"/>	Light Tundra Metallic**†
<input checked="" type="checkbox"/>	French Blue Metallic**
<input checked="" type="checkbox"/>	Twilight Blue Metallic
<input checked="" type="checkbox"/>	CD Silver Metallic
<input checked="" type="checkbox"/>	Liquid Grey Metallic**
<input checked="" type="checkbox"/>	Pitch Black
Wagon	
<input checked="" type="checkbox"/>	Cloud 9 White
<input checked="" type="checkbox"/>	Arizona Beige Metallic†
<input checked="" type="checkbox"/>	Infra-Red
<input checked="" type="checkbox"/>	Sangria Red Metallic
<input checked="" type="checkbox"/>	Light Tundra Metallic†
<input checked="" type="checkbox"/>	French Blue Metallic
<input checked="" type="checkbox"/>	Twilight Blue Metallic
<input checked="" type="checkbox"/>	CD Silver Metallic
<input checked="" type="checkbox"/>	Liquid Grey Metallic
<input checked="" type="checkbox"/>	Pitch Black

\*Medium Parchment interior not available on base level ZX5, ZX5 Comfort or LX Sedans. \*\*Not available on base level ZX3, base level ZX5 and LX Sedans. †New for 2003.



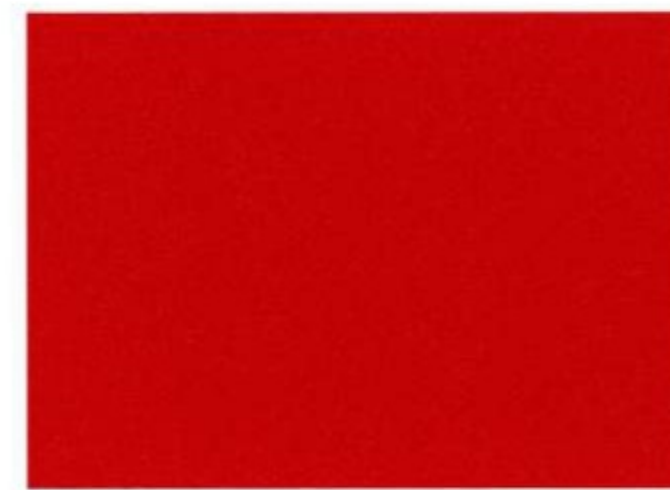
Cloud 9 White



Arizona Beige Metallic



Egg Yolk Yellow



Infra-Red



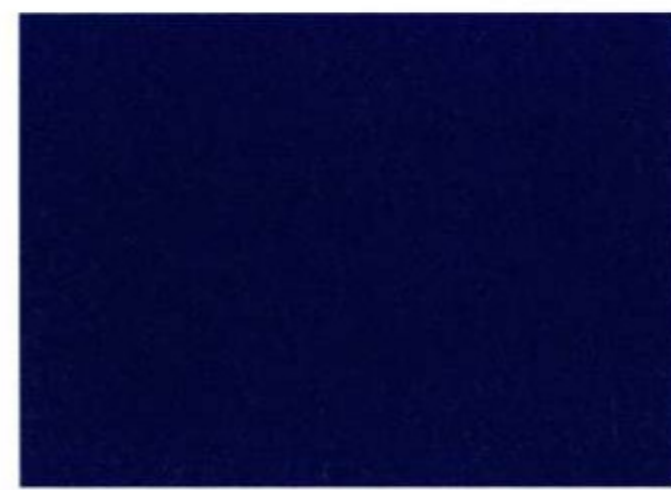
Sangria Red Metallic



Grabber Green Metallic



Light Tundra Metallic



French Blue Metallic



Twilight Blue Metallic



CD Silver Metallic

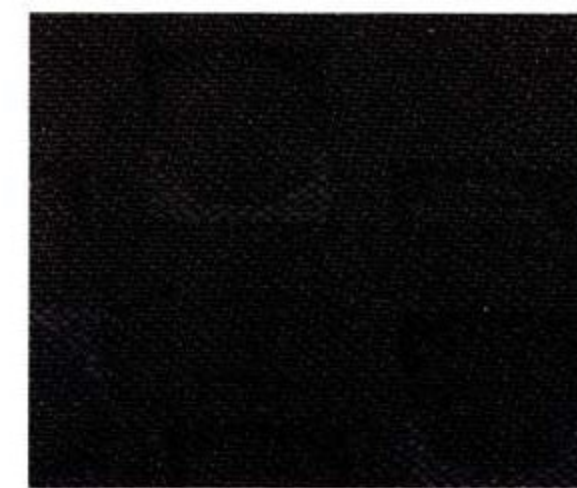


Liquid Grey Metallic



Pitch Black

Ford uses clearcoat paint for beauty and protection. Colors shown are representative only. See your dealer for actual paint/trim options.

Dark Charcoal Cloth  
Standard on ZX3 modelsMedium Graphite Cloth  
Standard on ZX3 models and ZX5/ZX5 ComfortMedium Parchment Cloth  
Standard on SE Sedans/WagonMedium Graphite Cloth  
Standard on LX Sedans and SE Sedans/WagonMedium Parchment Cloth  
Standard on ZX5 Premium, ZTS and ZTWMedium Graphite Cloth  
Standard on ZX5 Premium, ZTS and ZTWMedium Parchment Leather  
Optional on ZX5 Premium, ZTS and ZTWMedium Graphite Leather  
Optional on ZX5 Premium, ZTS and ZTW16" 5-Spoke Aluminum Wheel  
Standard on ZX3 Premium/Power Premium,  
ZX5 Premium and ZTS; optional on  
ZX5 Comfort and ZTW15" Multi-Spoke Aluminum Wheel  
Standard on ZX5/ZX5 Comfort,  
SE Wagon and ZTW15" 5-Spoke Aluminum Wheel  
Standard on ZX3 and SE Sedans14" Steel Wheel with  
Bolt-On-Appearance Wheelcover  
Standard on LX Sedans

2.0L SOHC I4

Horsepower: 110 hp @ 5000 rpm  
Torque: 125 lb.-ft. @ 3750 rpm



2.0L DOHC Zetec I4

Horsepower: 130 hp @ 5300 rpm  
Torque: 135 lb.-ft. @ 4500 rpm





1 When it's time to leave four wheels behind, you'll be ready with a removable **roof rack**. It accommodates things like bikes, snowboards and surfboards. So go ahead – design your day and load 'em up.

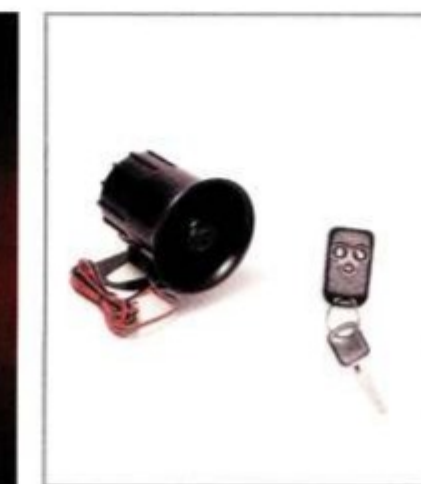
2-6 Totally tricked out with a **rear spoiler**, **kickin' B-pillar appliqué**, **lower body kit**, **projector headlamps** and **mini-mask**, this Focus is ready to hit the streets hard. And lookin' great.

7 You don't *need* them, but **chrome exhaust tips** just make your Focus so cool. And somehow, it just sounds throatier, doesn't it?

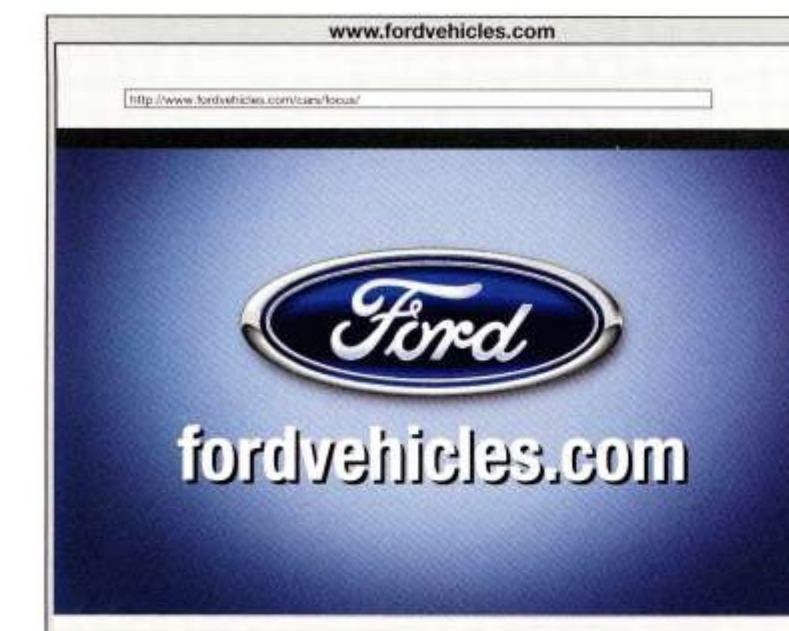
8 Thwart thieves with an **alarm system** that includes an underhood-mounted siren and remote keyless entry key fob.

9 Stand back up to 500 feet, and you can still start your Focus with the **remote start** accessory. Warm it up, cool it down, or just surprise everyone.

10 Keep the jug of milk separated from the eggs, or you'll have a mess on your hands. Not to mention inside your Focus. This handy **cargo organizer** puts everything in its place and helps to keep it there.



See your dealer for these and other great Ford Dealer-installed accessories.



#### www.fordvehicles.com

Get information on any Ford vehicle, print e-brochures or take a look at financing and leasing options. Ford owners can enjoy the benefits of **My Ford**, a private, owners-only area of fordvehicles.com, designed to provide a single, convenient area to manage vehicle information, including maintenance, financing and web services. Our website also offers details about European Delivery, the Pre-Owned Ford program, Ford Credit and more. There's a world of information, but only one address to remember, fordvehicles.com.



#### Ford Extended Service Plan

When you purchase or lease a quality Ford vehicle, you want your ownership experience to be satisfying, pleasurable and as worry-free as possible... and so do we. That's why we created the Ford Extended Service Plan. ESP provides "Peace of Mind" protection designed to cover key vehicle components and protect you from the cost of unexpected repairs. Ask your dealer for a Ford Extended Service Plan backed by Ford Motor Company and honored at all Ford dealerships.

##### Ford Extended Service Plan – "Peace of Mind" Protection

- The **VALUE** You Want
- The **SECURITY** You Need
- And the **CONFIDENCE** You Deserve



#### We are here to help.

Ford Motor Company understands that a physical disability does not mean life can't be rewarding. In fact, for many thousands of Ford Motor Company customers, Ford Mobility Motoring has meant their lives can be easier and more fulfilling.

Ford created the Mobility Motoring Program to help individuals and families defray some of the costs associated with obtaining adaptive equipment on new Ford, Mercury or Lincoln vehicles. Ford Mobility Motoring offers financial assistance of up to \$1,000 for the installation of adaptive equipment, and up to \$200 on alert hearing devices. The program also offers Ford Credit Mobility Financing for qualified individuals.

Visit [www.mobilitymotoringprogram.com](http://www.mobilitymotoringprogram.com) where you can request a Ford Mobility Motoring video, learn about the Ford Mobility Motoring process, and read what Ford Mobility Motoring customers say about the freedom and independence their adapted vehicles provide them. You may also call 1-800-952-2248. Persons with hearing impairments may call 1-800-833-0312.



#### Powertrain Extended Service Plan

Ford Focus comes with a No-Charge 100,000-mile/5-year Powertrain Extended Service Plan. A deductible applies. In Florida, coverage is provided by a 100,000-mile/5-year Powertrain Limited Warranty. See dealer for details.



#### Ford Credit and Red Carpet Lease

Many lease managers have completed several hours of training in a Red Carpet Lease program designed to make us the best in the business. We think you'll find a Red Carpet Lease the best way to lease.

Under the New Vehicle Limited Warranty, you'll receive Bumper-to-Bumper, no-deductible coverage on your new Ford vehicle for 3 years/36,000 miles. You'll also receive unlimited-mileage, no-deductible corrosion perforation coverage for five years. Ask your Ford Dealer for a copy of this warranty.

During its 3-year/36,000-mile limited warranty period, every new Ford vehicle includes the assurance and support of a 24-hour emergency Roadside Assistance program. Roadside Assistance includes such services as fuel delivery, tire changes, jump starts, and help when you are locked out of your vehicle. Ask your Ford Dealer for complete details about this program.

Complete information on our vehicle lineup is available on our website. To get more information, please visit us at [www.fordvehicles.com](http://www.fordvehicles.com). Likewise, to get details on various financing options available on your new Ford vehicle, please visit [www.fordcredit.com](http://www.fordcredit.com). Doing so can give you a head start before talking to your Ford Dealer about financing your new Ford vehicle.



fordvehicles.com



**FORD. NO BOUNDARIES.** WHEN YOU LIVE WITH SPIRIT AND PASSION, THE POSSIBILITIES OF LIFE AND ACHIEVEMENT ARE LIMITLESS. THERE ARE *NO BOUNDARIES*. EVERY PRODUCT FORD MOTOR COMPANY DESIGNS AND BUILDS IS THE DIRECT RESULT OF 100 YEARS OF THAT SPIRIT AND PASSION. IT WAS PRESENT WHEN HENRY FORD FOUNDED THE COMPANY IN 1903 AND WHEN THE FIRST AUTOMOBILE ROLLED FROM HIS WORKSHOP. TODAY, IT IS MORE ALIVE THAN EVER. THERE ARE *NO BOUNDARIES* TO OUR ENDLESS DRIVE TO TURN A NO INTO A RESOUNDING YES. TO GO BEYOND WHAT WE THOUGHT WAS POSSIBLE. TO CREATE AN ARRAY OF VEHICLES THAT HELP PROVIDE A PLACE WHERE FAMILY AND FRIENDS CAN CONNECT WITH EACH OTHER AS WELL AS WITH THEIR COMMUNITY. AND THERE ARE *NO BOUNDARIES* TO OUR DEDICATION – STRIVING TO BRING YOU THE HIGHEST QUALITY, MOST EXCITING, BEST ENGINEERED, MOST RELIABLE PRODUCTS IN THE WORLD.



*Ford Motor Company*  
100 YEARS