

LAND ROVER LR2

2008



Agile, responsive and replete with advanced Land Rover technology, the new Land Rover LR2 HSE is ready for wherever you want to go. Take the long way to the coast, find the twistiest mountain pass, or search for the real short-cut, where no car dares to tread. With 60 years of Land Rover engineering embodied in every square millimeter, the LR2 can take it all in stride.

Find adventure in every twist of the road.

Its highly responsive 3.2-liter inline six and permanent intelligent all-wheel-drive system can make any adventure more exhilarating. And its new HSE accoutrements, including perforated leather trim, plus its dual-zone automatic climate control and premium audio system make the everyday even more enjoyable. Get behind the wheel and discover the LR2 for yourself.



□ Land Rover LR2 in Rimini Red Metallic with optional equipment.



□ Land Rover LR2 in Rimini Red Metallic with optional equipment.

From its chiseled front end to its square-shouldered stance, the LR2 instantly signals its intent. While it's the very latest Land Rover design, the LR2 still possesses an iconic look that would be recognized around the world.

■ Marking the line where design and function intersect.

Form follows function

Step back for a moment, and take in the details. The clamshell hood, with prominent “castellated” ridges, not only echoes Range Rover design but also aids parking-lot maneuvers – you can easily see the front corners of the vehicle. A relatively long wheelbase with short front and rear overhangs gives LR2 impressive approach and departure angles for more secure off-road driving, or just negotiating a steep driveway with ease.



Function inspires design

The intricate power vents in each front fender not only look great, but were actually inspired by the need for a high-placed air intake. The driver's side vent directs cooler outside air to the engine, helping the high-torque inline six breathe more deeply. The vents are specifically positioned above the LR2's 500-mm (19.7-inch) maximum wading line in order to help protect the engine during serious off-road challenges. In this and so many other ways, aesthetics and capability merge in the new LR2.

Aggressive body-color side sills and bold 19-inch alloy wheels distinguish the new LR2 HSE.

Take a seat. The new perforated leather-trimmed seats not only look attractive and feel supple, but they're also specifically engineered for durability, safety and support. Starting with high-strength-steel frames originally designed for Range Rover Sport, the LR2 seats add dual-density foam, which provides more pliancy in the cushions and greater support in the bolsters. It's just one example of the LR2's comprehensive approach to engineering and design.

Inviting you in the moment you open the door.



Ergonomic arts

With all the features and controls confronting the driver of a premium SUV, it's an art form to design the instrument panel and center console for both beauty and ergonomics. The LR2 goes to the head of the class with a clear and logical display that flows from the available navigation system to the premium audio to the climate control, all intuitively designed and within easy reach.

More than just design and engineering, of course, are the touch and feel of the controls. Adjust the bright-tipped dashboard vents and note the cool feel of metal. Select a Terrain Response™ mode with satisfaction from the spring-loaded detents of the knob. This level of attention to detail is evident throughout the LR2.

Triple-sealed doors

Shut the doors. The reassuring sound you hear is courtesy of triple door seals, which not only help suppress wind noise – and water ingress during serious off-roading – but also are designed to help keep your pant legs clean. This very thoughtful feature helps keep dirt off the door sills, so even when the exterior of your LR2 displays a proud coating of off-road mud, you're less likely to brush against dirt when entering or exiting.

The Command Driving Position gives you an impressive view of the road ahead, while stadium rear seating, with the rear seat positioned about 50 mm (2 inches) higher than the front, helps ensure that everyone has an excellent outlook.



□ Alpaca Beige interior.



□ Alpacas Beige interior. Shown with optional equipment.

People + cargo. It all adds up in the LR2.



As you would expect from a Land Rover, LR2 possesses a highly versatile passenger and cargo area. Do the math and you'll find that seating configurations can accommodate anything from five people and their luggage to two people with plenty of cargo – there's almost 60 cubic feet of maximum loadspace.*

* 1.67m³ (58.9 cu. ft.) of maximum cargo volume.



Your choice

The spacious rear seat is anything but compact. Head room and leg room are designed to accommodate “real” adults. And with the 60:40 split rear seat, you can carry long items, like skis or a floor lamp, along with up to four occupants. Unlike some vehicles in this class, even

with five people on board there’s plenty of room for groceries, suitcases or camping gear.

Reversible cargo floor

There’s one more thoughtful touch to note in the back – the cargo floor is reversible. This composite panel has durable black nylon

carpeting on one side, and an easy-to-clean, smooth surface – for muddy or dirty cargo – on the other. That’s the sort of design detail that comes from Land Rover’s sport-utility experience.

The Land Rover LR2 HSE offers the kind of leading, high-tech standard and optional features that you wouldn't expect to find in this market segment. Then again, this is a Land Rover.

Premium features and options at the head of its class.



Expansive light

The standard dual-panel panoramic sunroof gives the already spacious interior an even more open and inviting feel. The sunroof glass is formulated to filter out infrared rays, providing light without unpleasant heat. The front section of the sunroof tilts up and slides over the rear section for open-air driving and a splendid view of the passing scenery, and there's virtually no penalty in head room.

Drive into the night, and the quartz-halogen headlights automatically illuminate as it gets darker. If you splash through a puddle or two, you can always activate the standard headlight washers. Rain-sensing wipers are also standard, automatically turning on when – and as often as – needed.



Advanced navigation and Bluetooth options

The optional GPS navigation system is DVD-based, so it contains maps for the continental U.S. and Canada on two discs.* Its high-resolution seven-inch screen uses Macromedia Flash® technology for exceptional quality. Plus, an extensive point-of-interest database means that you can search for hotels, shopping malls or a nearby ATM with a touch of the screen. For convenience and true hands-free calling, the optional Personal Telephone Integration system with Bluetooth® capability lets you link your compatible Bluetooth-equipped phone with the LR2 audio system.*

Compliments of Land Rover

For your added peace of mind, every LR2 not only comes with a 4-year/80,000-km (50,000-mile) New-Vehicle Limited Warranty, but also includes Land Rover Complimentary Scheduled Maintenance – a rarity in any class of SUV.**

* Some options are available only in combination with other options.

** See your Land Rover Retailer for details.

A gallery of conveniences makes the everyday far from it.

Even the most mundane of components are endowed with extra features and conveniences, all to benefit your everyday enjoyment of the LR2.



□ Inside, the LR2 takes your comfort and convenience to heart. All the seats are **leather-trimmed** with new perforated leather bolsters. Both front seats are power adjustable – there are now eight-way controls for the driver's seat and six-way controls for the front passenger.

□ The steering wheel tilts and telescopes so you can find that just-right position. In addition, you can opt for a **memory system** for the driver's seat and the exterior mirrors, making life much easier for three different drivers.*

□ The available Cold Climate Package provides many benefits.** It includes a 600-watt heating element integrated into the windshield that's engineered to **clear ice** in less than five minutes, even when it's -8° C out (-18° F). In addition, the **seat heaters** use new Smart Wire™ technology that's designed to provide reliable and rapid warming using individually enameled strands of wire.



□ The standard Alpine® AM/FM/CD audio system puts other vehicles' optional systems to shame. With **320 watts of power**, nine strategically placed speakers and a six-disc in-dash CD changer, it's sure to impress. There's even an auxiliary input jack so you can easily hook up your iPod® or similar MP3 player. Not enough? Then the incredible **440-watt Dolby® Pro Logic® II 7.1 surround-sound** option is for you.* SIRIUS® Satellite Radio is available with either system.***

□ The available **Personal Telephone Integration** system adds the convenience of Bluetooth connectivity to your LR2.* You can connect your compatible cell phone wirelessly, automatically engaging the LR2's roof-mounted antenna for exceptional signal reception and hands-free operation.

□ The Optikool® side and rear glazing is designed to reduce solar heat inside the LR2. But the glass in the rear gate also received special attention to help **reduce radio interference** from the rear defroster. A dedicated wiring harness for the radio antenna is carefully positioned along the right side of the glass, routed through the right-side hinge, while the rear gate latch, wiper and rear defroster wiring use the left side, isolating one from the other.

* Some options are available only in combination with other options.

** Cold Climate Package is standard in Canada. See page 36 for Canadian content.

*** Subscription not included. Not available in Alaska, Hawaii or Canada.

Some vehicles shown with optional equipment.

Driving technology farther down the road.

From your first drive in an LR2, you'll notice all the beneficial technology that's designed to ease your tasks, day and night.



- Wouldn't it be great to see around the next corner at night? The optional **Adaptive Front-Lighting System (AFS)** is designed to do just that, swiveling the LR2 headlights to match your steering input.*
- **Auto-leveling bi-Xenon headlights** are also part of the package.* These advanced Xenon-based lights provide 200-percent more light while using half the electrical power. And with no filament to burn out, they are engineered to last up to 10 times longer than conventional headlight bulbs.



□ Backing up is often daunting, especially if you're in a crowded parking lot...or even in your own driveway. LR2 makes it easy with standard rear **Park Distance Control**. As you engage Reverse, a series of beeps will indicate the presence of, and distance to, major obstacles in your way.

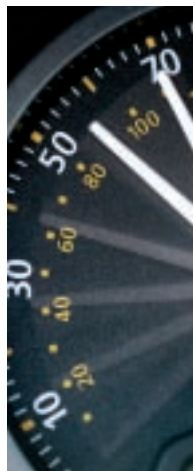
□ Unlike many sport utilities, the LR2 is fitted with **ventilated disc brakes** in both the front *and* the rear. Ventilating the brake rotors helps keep them cool, even under hard, repeated use, for more consistently strong braking. What's more, the front disc brakes are reverse-ventilated, drawing cool air into the center of the rotor and letting the physical action of the wheel help vent warm air along the rim.

□ For added convenience, and of course, a high-tech touch, a **push-button start** system controls the LR2's advanced inline six-cylinder engine. Sending engine power to the road are standard 19-inch alloy wheels and wide radial tires for traction, handling and control in a wide range of conditions.

* Some options are available only in combination with other options.
Some vehicles shown with optional equipment.

An inline six is inherently balanced and refined, but few automakers have found a way to mount this engine configuration transversely – sideways – and fit it with an all-wheel-drive system. Until now.

A revolutionary approach to rooting out engine compromises.



Efficient packaging for major advantages

The four-valve-per-cylinder, 3.2-liter inline six in the LR2 is a marvel of packaging efficiency. Engineers developed a revolutionary Rear End Ancillary Drive (READ) system that relocates the power steering pump and air conditioning compressor into the space above the transmission. This seemingly simple move helps make the LR2 engine very compact – it's just under two feet long* – which allows it to be placed transversely in the engine compartment. This transverse mounting provides both packaging and safety advantages. It frees up more overall space for the passenger compartment. And it helps deliver excellent crash-test performance by giving the crumple zones more room to work effectively.

Tackling typical trade-offs

The innovations continue. Variable Valve Timing (VVT), a system also used in Land Rover V8 engines, virtually eliminates the compromise between high-rpm power and low-rpm torque. VVT continuously adjusts the opening and closing of the intake valves to optimize performance, emissions and efficiency throughout the engine's operating range.

Patented Cam Profile Switching provides two completely different intake camshaft profiles for low speed and load versus higher speed and load. Finally, a variable intake manifold optimizes airflow under different operating conditions. As a result of all this, 80 percent of peak torque is available across the usable rev range, giving you the torque to pull out onto a busy highway as well as the power to pass on the open road.

* The LR2 engine is just 600.5 mm (23.6 inches) long.

Look carefully at the camshafts and you'll notice segmented intake lobes – one section for lower speeds and one for higher. This setup helps eliminate the compromise between power and efficiency.

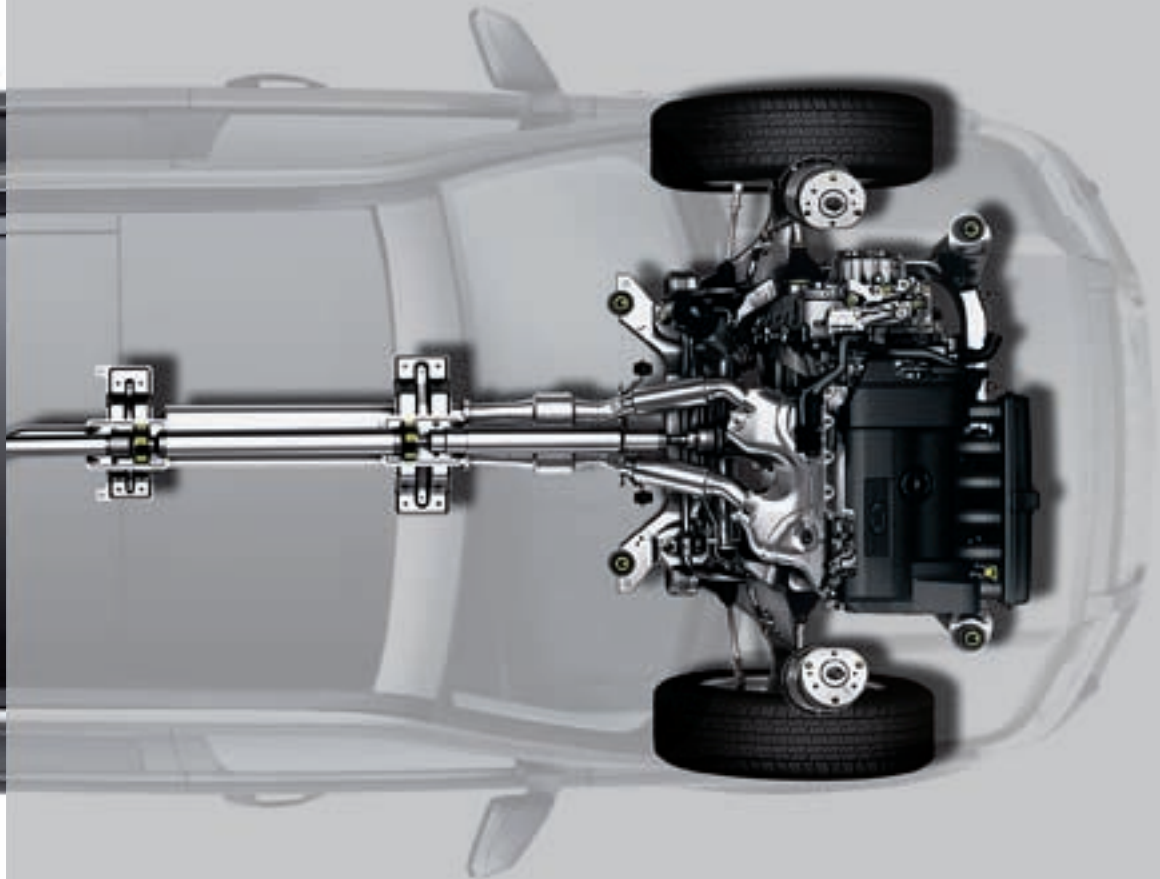


On-Road



▣ **PRECISION.** Fully independent suspension uses coil springs and large-diameter struts for precise wheel placement. The long-travel suspension helps provide excellent ride comfort over rough or potholed roads.

▣ **RESPONSIVENESS.** Mated to its 230-horsepower inline six is an innovative six-speed electronic automatic transmission. You can select fully automatic operation in Normal or Sport modes, or CommandShift™ manual control for more spirited driving.



▣ **STABILITY.** A host of dynamic systems, from four-wheel Electronic Traction Control (4ETC) to Roll Stability Control (RSC*) to Dynamic Stability Control (DSC), help increase stability and all-road traction, even in dry weather.*

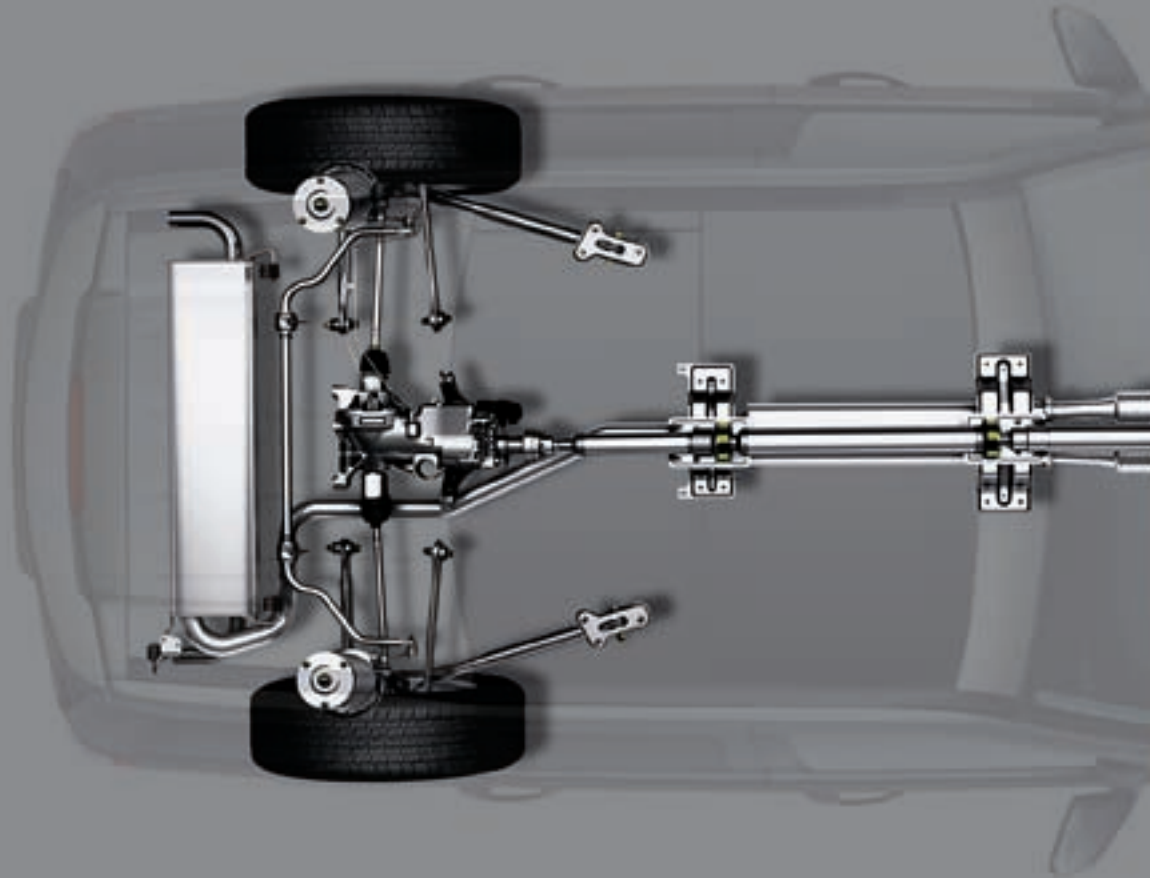
▣ **AGILITY.** The LR2 has power rack-and-pinion steering with just 2.6 turns lock-to-lock – that sounds more like a sports car than an SUV. What's more, the steering unit is rigidly mounted to the front subframe to improve response.

* Drive responsibly, always wear your safety belts, and secure children in the rear seat. Even advanced technology cannot overcome the laws of physics. It is always possible to lose control of a vehicle due to inappropriate driver input for the conditions.

Off-Road

▣ **CAPABILITY.** When the pavement ends, you'll really appreciate the LR2's off-road engineering. Wading depth of 500 mm (19.7 inches), ground clearance of 210 mm (8.3 inches), and approach and departure angles of 29 degrees and 32 degrees, respectively.

▣ **INTELLIGENCE.** Permanent intelligent all-wheel drive allocates engine torque to the wheels as needed. Almost all the torque can be sent to the rear wheels...or to the front. The center coupling can progressively lock or unlock extremely quickly as traction conditions change.



▣ **CONTROL.** Engage Hill Descent Control (HDC) and it automatically applies the brakes to control speed on steep downhill slopes. In addition, Land Rover's patented Gradient Release Control (GRC) releases brake pressure progressively for added comfort. Both systems provide well-controlled off-road descents.

▣ **TRACTION.** Start the engine and an electric pump "precharges" the center coupling with 369 pound-foot (500 Nm) of pressure to transfer torque almost instantly to all four wheels – within 150 milliseconds or less than 15 degrees of wheel rotation from a standstill. This not only supplies instant traction, but it reduces environmental damage from wheelspin.

the LR2 can surprise a few sports sedans...



...while it's true to its Land Rover roots



Vehicles shown with optional equipment.



The centrally mounted Terrain Response control knob lets you select special programs for a wide range of traction conditions.

Terrain Response, developed and patented by Land Rover, continuously monitors and adjusts the LR2's many dynamic systems to maximize traction under virtually all driving conditions. This advanced system offers four modes to optimize capability and control for just about any driving situation. For instance, when venturing into difficult conditions, like deep mud or soft sand, you can select a special program using the centrally located control knob. Or leave it in the "General" setting for everyday use.

Dial in the traction with a flick of your wrist.



Terrain Response is never "off," and the **General** setting is compatible with all on- and off-road conditions. It will automatically react to road conditions and make multiple dynamic adjustments to give you precise control.



Select the **Grass/Gravel/Snow** setting and you'll maximize traction on firm but slippery surfaces. Wet leaves and grass, or hard-packed snow and ice call for this setting.



The **Mud & Ruts** setting can make a dramatic difference on soft, wet ground where some degree of wheelspin is important in order to maintain vehicle momentum.



The **Sand** setting gives you additional control in dry, soft sand or loose dirt. With dramatic adjustments to the engine, transmission and traction control programming, the Sand setting helps you power through desert conditions with ease.

Note: Terrain Response cannot regulate all the factors that influence vehicle control. Please practice safe driving techniques.



□ Land Rover LR2 in Stornoway Grey Metallic with optional equipment.

While most safety-conscious consumers concentrate on passive safety, active safety – from all-terrain ABS to Dynamic Stability Control – is equally important to help you avoid an accident in the first place. Presented for your consideration is the LR2: A paragon of both interpretations.

■ Helping you avoid an accident before it happens.

Adding to a solid foundation

Large ventilated disc brakes at each wheel form the foundation of many of the LR2's dynamic, active safety systems. Start with ABS. For secure and stable stopping, a four-channel, all-terrain Anti-lock Braking System (ABS) enhances your ability to steer and brake simultaneously – vital in that split second of your reaction to an impending accident. Its all-terrain function means the system can react to both on-road and off-road driving conditions. Next consider Emergency Brake Assist (EBA), which applies full braking pressure when it senses a sudden application of the brakes, Dynamic Stability Control (DSC), which helps reduce skids, and Cornering Brake Control (CBC) to help maintain vehicle stability and control when braking hard in a curve.*



Helping to maintain stability*

Finally, to help detect and minimize the risk of an impending rollover, the LR2 is endowed with Roll Stability Control (RSC), an innovative system that continuously monitors vehicle movements and activates individual brakes to help maintain stability.* It is the most sophisticated rollover prevention technology ever fitted to a Land Rover vehicle.

* Drive responsibly, always wear your safety belts, and secure children in the rear seat. Even advanced technology cannot overcome the laws of physics. It is always possible to lose control of a vehicle due to inappropriate driver input for the conditions.

Land Rover has endowed the LR2 with significant advances in passive safety to help protect you and your passengers in the event of a collision: From a highly rigid passenger compartment to engineered crumple zones to seven airbags (SRS).*

for airbag SRS statement.

High-strength passenger compartment

The passenger compartment is surrounded by a “safety cage” of high-strength steel. This exceptional steel – so strong that it requires the use of special presses to form it – is used in the A-pillars, lower sills, upper door-jamb structures and dashboard supports. In short, all crucial members of the safety cage. In addition, each door is fitted with a high-strength-steel side-impact beam.

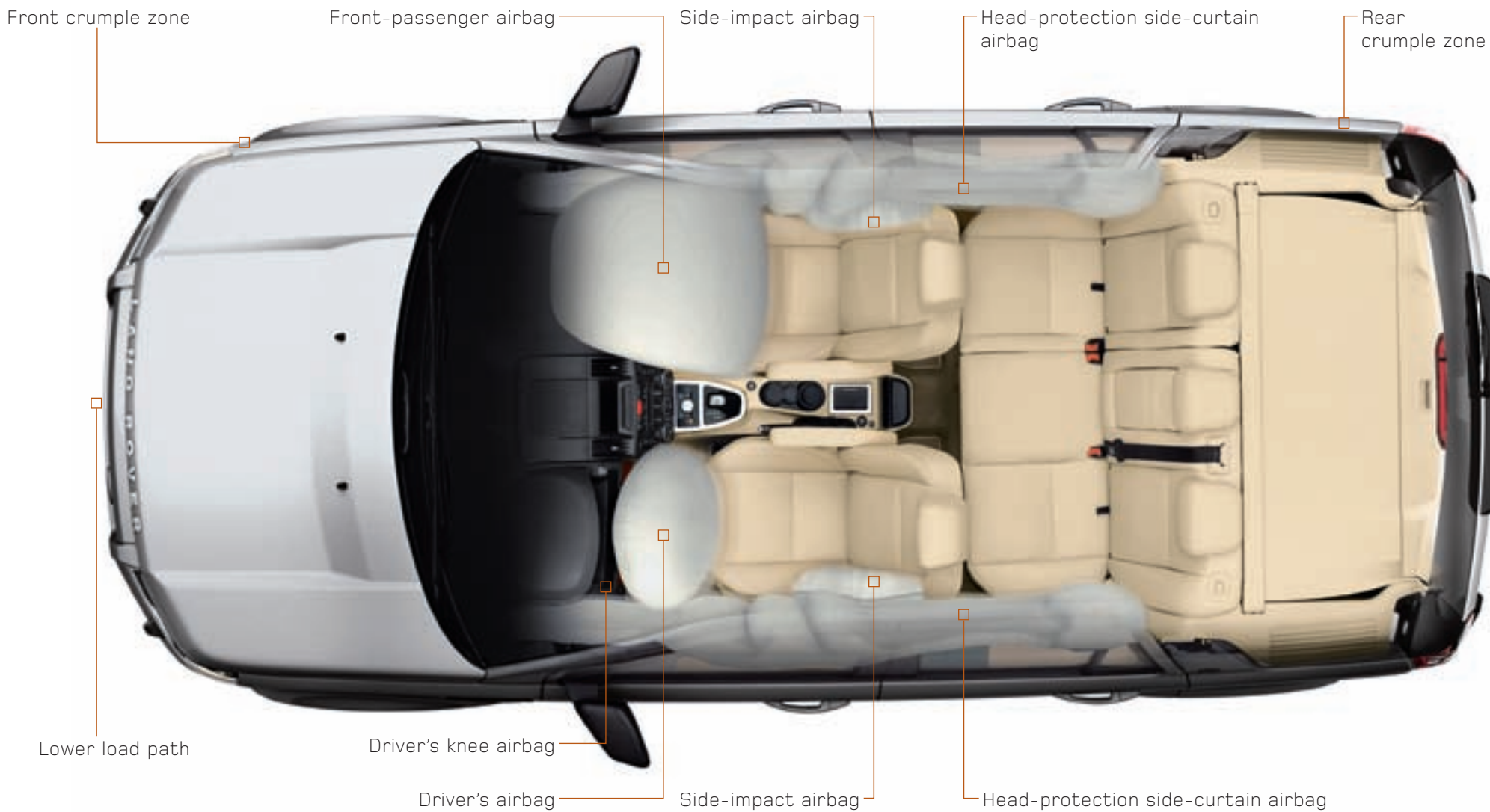
Extra space for safety

The transverse inline six-cylinder engine and careful underhood packaging has resulted in about 70 to 90 mm (2 to 3 inches) of clearance between the hood and the powertrain components in critical areas. This added space aids the impact-absorbing characteristics of the front end. To address concerns with vehicle compatibility in a frontal collision, a lower load path structure helps ensure that the LR2’s main crash rails do not override the top of a smaller vehicle’s main structure.

Highly engineered occupant protection

The seven airbags are, of course, highly engineered for occupant protection in a variety of different types of collisions. The driver and front-passenger airbags feature variable inflator technology to match the level of airbag deployment to occupant size and safety-belt use. In addition to front-seat side-impact airbags and side-curtain airbags, there’s a driver’s knee airbag to help protect the lower extremities of the driver in a severe frontal impact.

* See first footnote on page 36



Innovations abound in the design and assembly of the LR2.

Extensive engineering and development, plus special techniques at the award-winning Halewood, England, plant, all add to the LR2's credentials.



- The LR2 body/chassis has **incredibly high torsional rigidity** – 18,145 pound-feet per degree of body twist (24,600 Nm/degree). That means over eight tons of force applied to a lever will only twist the LR2 body by one degree, a figure close to that of the Range Rover. The benefits of this high body rigidity include more consistent ride and handling over uneven pavement or off-road, plus enhanced body and chassis durability and integrity.



□ From the USA to the Middle East to Australia; from the depths of Death Valley to 4260-m (14,000-foot) mountain trails; from temperatures -40° to $+50^{\circ}$ C (-40° to 122° F) and up to 95-percent humidity: **The LR2 has been tested around the globe.** Along the way, systems and components were perfected to help increase the longevity and durability of this innovative Land Rover vehicle.

□ Specific engineering enhancements to the LR2's engine add **refinement and durability.** Extensive dust- and waterproofing are designed to protect the engine on off-road trails. The large sump and special lubrication system help ensure proper oil delivery at the acute off-road angles the LR2 may see. And the engine's light but strong alloy construction improves thermal efficiency, reducing warm-up times for effective passenger-compartment heating plus lower emissions.

□ Special assembly techniques are designed to **help ensure that each LR2 will last** for a very long time. Select body panels utilize robotic-applied sealants for a consistent, watertight fit, and all static glass is adhesive-bonded to the body with robotic accuracy. Hot wax is injected into *all* exterior lower body sections to help resist corrosion. Finally, color-keyed primer is used as part of the six-stage paint process to improve the depth and luster of the top color coat.

Once you own an LR2,
you may never see the world in the same way again.



Here are some of the special opportunities that await you...

- **Land Rover Way Retailer Events.** Sponsored by your Land Rover Retailer, these events better acquaint you with your vehicle's supreme capabilities or offer access to unique culinary and lifestyle activities. Some events have a special twist, such as incorporating off-road driving with an afternoon of fishing in a remote locale or watching a championship polo match.
- **Land Rover Experience Driving Schools.** Breathtaking scenery, luxurious accommodations and hands-on instruction in all aspects of off-road driving – this is an experience like no other. Land Rover Experience Driving Schools provide personalized instruction on purpose-built courses, where the degree of difficulty is matched to your skills and desires. While all drivers are welcome, owners of Land Rover vehicles will receive a special discount. There are Land Rover Experience Driving Schools at Biltmore Estate in Asheville, North Carolina, at Fairmont le Château Montebello in Quebec, Canada, and at Quail Lodge in Carmel, California. For more information, visit landroverusa.com/drivingschools or landrover.com/ca.



□ **Land Rover Concierge.*** This 24-hour service can provide everything from booking reservations to purchasing gifts...or even scheduling a dog-sitter. Each concierge has local-city expertise and can even help you obtain information about off-road trails nearby. This service is complimentary for the length of the warranty.**

□ **Land Rover Adventures.** These thrilling off-road expeditions let you test a Land Rover's capability in some of the most scenic – and challenging – off-road locations on earth, such as Moab, Utah, or Cape Town, South Africa. What makes an Adventure even more special is that at day's end, you will retire to a luxury resort or an upscale rustic retreat. For more information, visit landroverusa.com/adventures or landrover.com/ca.

□ **Warranty & Complimentary Scheduled Maintenance.** Every new Land Rover is covered by a 4-year/80,000-km (50,000-mile) New-Vehicle Limited Warranty.† Furthermore, LR2 owners enjoy Complimentary Scheduled Maintenance during the warranty period.†

□ **Financial Services.** Land Rover Capital Group†† offers competitive rates, innovative products, flexible terms and outstanding customer service. Ask your Land Rover Retailer for the most current lease and finance information, or visit landrovercredit.com (U.S.-only website).

* Not available in Canada.

** For the original owner.

† See your Land Rover Retailer for details.

†† Land Rover Financial Services in Canada.

Land Rover LR2 HSE specifications



OVERALL BODY HEIGHT

1740 mm
(5 ft. 8.5 in./68.5 in.)

With GPS antenna:
1765 mm
(5 ft. 9.5 in./69.5 in.)

TRACK, FRONT

1601 mm (63.0 in.)



WHEELBASE

2660 mm (104.7 in.)

OVERALL BODY LENGTH 4500 mm (177.1 in.)



STEERING

Type Power-assisted
rack-and-pinion.

Turns lock-to-lock 2.6

Turning circle 11.3 m (37.1 ft.)

BODY/CHASSIS CONSTRUCTION

- Monocoque construction with extensive use of advanced high-strength steels. Front and rear subframes. Hydroformed chassis members.
- Outer-body panels are double-sided zinc-coated steel.

ENGINE

Type	Inline 6
Construction	Aluminum-alloy cylinder heads and block.
Displacement	3.2 liters (3192 cu. cm/195 cu. in.)
Bore x stroke	84.0 x 96.0 mm (3.31 x 3.78 in.)
Valvetrain	Chain-driven double-overhead camshafts, four valves per cylinder. Variable Valve Timing and patented Cam Profile Switching (controls intake valve lift and duration).
Compression ratio	10.8:1
Horsepower @ rpm	230 bhp @ 6,300 rpm
Torque @ rpm	234 lb-ft @ 3,200 rpm
Engine management	Microprocessor-controlled fuel and ignition systems with self diagnostics.
Fuel recommendation	Premium unleaded (91 pump octane).*
Fuel tank	70 liters (18.5 U.S. gallons)

DRIVETRAIN

Drive system	Permanent intelligent all-wheel drive. Haldex coupling with specific Land Rover tuning. Front-to-rear torque split varies continuously.		
Traction control	Four-wheel Electronic Traction Control (4ETC).		
Transmission	Aisin Warner six-speed electronically controlled automatic transmission with CommandShift manual control. Locking torque converter. Normal, Sport and CommandShift modes.		
Gear ratios	1st - 4.15:1 4th - 1.16:1 Reverse - 3.39:1	2nd - 2.37:1 5th - 0.86:1 Final-drive ratio - 3.75:1	3rd - 1.56:1 6th - 0.69:1

WHEELS & TIRES

Wheels	19 x 8.0-in. aluminum alloy.
Tire size	235/55R19 radials
Spare	235/65R17 radial on 17 x 7.5-inch steel wheel.

* Lower grades of gasoline can be used without harm to the engine, but the LR2 will run best on premium-grade gasoline.

Some vehicles shown with optional equipment.

OVERALL WIDTH

1910 mm (75.1 in.) body width.
2180 mm (85.7 in.) with mirrors.

**TRACK, REAR**

1614 mm (63.5 in.)

OFF-ROAD DIMENSIONS

Minimum
ground
clearance
210 mm
(8.3 in.)



Maximum
wading
depth
500 mm
(19.7 in.)

Angle of departure 32 degrees (SAE) Angle of approach 29 degrees (SAE)
Ramp breakover angle 21.5 degree (SAE excluded angle)

MAXIMUM CARGO VOLUME

With rear seat folded:
1.67 m³ (58.9 cu. ft.)

SUSPENSION**Front**

Independent, MacPherson struts, lower control arms, long-travel coil springs, anti-roll bar.
185 mm (7.3 inches) of vertical wheel travel.

Rear

Independent, struts with lateral and longitudinal links, long-travel coil springs, anti-roll bar.
220 mm (8.7 inches) of vertical wheel travel.

BRAKES & DYNAMIC CONTROL SYSTEMS

- Power-assisted four-wheel ventilated disc brakes.
- 316-mm front/302-mm rear discs (12.5-in./12.0-in.).
- Four-channel, all-terrain Anti-lock Braking System (ABS).
- Electronic Brakeforce Distribution (EBD).
- Emergency Brake Assist (EBA).
- Cornering Brake Control (CBC).
- Roll Stability Control (RSC).
- Hill Descent Control (HDC).
- Dynamic Stability Control (DSC).

TERRAIN RESPONSE SYSTEM

- Multi-mode system to maximize traction and control in a variety of driver-selectable settings: General (optimizing systems for most normal driving conditions), Grass/Gravel/Snow, Mud & Ruts, and Sand.

PAYLOAD & TOWING CAPACITY

Curb weight	1930 kg (4,255 lb.)
Gross Vehicle Weight Rating (GVWR)	2505 kg (5,520 lb.)
Maximum payload	500 kg (1,100 lb.)
Maximum roof-rack load	75 kg (165 lb.)
Maximum trailer weights	
Trailers without brakes	750 kg (1,650 lb.)
Trailers with brakes	1585 kg (3,500 lb.)
Maximum tongue weight	150 kg (330 lb.)

INTERIOR DIMENSIONS

Seating capacity	Five
Head room, front/rear	1020/1000 mm (40.2/39.4 in.)
Leg room, front/rear	1065/925 mm (41.9 in. max./36.4 in.)
Shoulder room, front/rear	1465/1460 mm (57.6/57.3 in.)
Cargo capacities	
• Rear seat folded	1.67 m³ (58.9 cu. ft.)
• Behind rear seat	0.76 m³ (26.7 cu. ft.)
Loadspace length	
• Behind rear seat	915 mm (36.0 in.)
• Maximum	1570 mm (61.8 in.)
Maximum loadspace width	
• Between wheel arches	1000 mm (39.5 in.)
• Maximum width	1245 mm (49.1 in.)
Maximum loadspace height	885 mm (34.8 in.)

Land Rover Vehicle Kit

Genuine Land Rover Vehicle Kit is a premier collection of specialized accessories, **designed and constructed to the same high standards as the vehicles themselves**. And when purchased with your new LR2, Vehicle Kit carries the same limited warranty as the vehicle.* From the head-restraint-mounted entertainment system, to the audio connectivity package, which enables complete integration of an iPod into the LR2's audio system and controls, Genuine Land Rover Vehicle Kit lets you make your LR2 as distinctive as your interests and personality.

For more information about the complete line of Land Rover Vehicle Kit, available exclusively from authorized Land Rover Retailers, speak with your Sales Guide. You'll also find an interactive accessory builder tool online. Just go to www.landroverusa.com or www.landrover.com/ca to see how Land Rover Vehicle Kit will look on your LR2.



Rear lamp guards



Audio Connectivity Module



* See your Land Rover Retailer for details.

Vehicles shown with optional equipment. Wave board shown from Starboard (star-board.com).

Summary of LR2 HSE features

Every LR2 is extremely well equipped. Here's a quick look at the many standard and optional features.

	LR2 HSE
Automatic headlights with power washers	Std.
Front and rear fog lights	Std.
Rain-sensing windshield wipers	Std.
Rear Park Distance Control (PDC)	Std.
Rear privacy glass	Std.
Cargo-area cover	Std.
Leather seating surfaces	Std.
Eight-way power driver's seat and six-way power front-passenger seat	Std.
Dual-zone automatic climate control with programmed defrost	Std.
320-watt Alpine AM/FM audio system with six-disc in-dash CD changer, nine speakers and auxiliary audio connection	Std.
Panoramic dual-panel sunroof	Std.
Multi-function trip computer	Std.
Auto-dimming inside rearview mirror	Std.
19-inch alloy wheels with 235/55R19 radial tires	Std.
18-inch alloy wheels with 235/60R18 radial tires (appropriate size for fitting snow chains)	No-Cost Opt.
Cold Climate Package with heated front seats, heated front windshield and heated windshield-washer jets	Opt. ¹
SIRIUS Satellite Radio² and Personal Telephone Integration with Bluetooth capability	Opt.
Technology Package with DVD-based GPS navigation system, 440-watt Dolby Pro Logic II 7.1 surround-sound audio system with 14 speakers, rear-seat audio controls, SIRIUS Satellite Radio ² and Personal Telephone Integration system with Bluetooth capability ⁴	Opt. ³
Lighting Package with bi-Xenon headlights, Adaptive Front-Lighting System, memory system for driver's seat and exterior mirrors, plus approach and puddle lights	Opt.
Narvik Black exterior⁵	Opt.

1. Standard on Canadian models. 2. Subscription not included. Not available in Alaska, Hawaii or Canada. 3. Not available as a package in Canada. Second-row audio controls are available as part of the Premium Sound Package in Canada. See page 36, "Canadian Models Only" for stand-alone options. 4. See your Land Rover Retailer for compatible Bluetooth phones. 5. Narvik Black is scheduled to be replaced by Santorini Black in 2008.



Land Rover LR2 HSE features



SAFETY & SECURITY FEATURES

- Seven airbags (Supplemental Restraint Systems)¹: Driver and dual-threshold front-passenger airbags, driver's knee airbag, side-impact airbags for front seating positions, and head-protection side-curtain airbags for outboard seating positions.
- Side-door impact beams in the front and rear doors.
- LATCH (Lower Anchor and Tether for Children) system for child seat attachment. Child seat tether anchors.
- Front and rear crumple zones.
- Collapsible steering column.
- Front and rear one-piece, three-point lap/shoulder safety belts for all seating positions. Height-adjustable front safety-belt anchors.
- Pre-tensioning front safety belts.
- Integral head restraints, front and rear, including rear center seating position.
- Cargo-area cover.
- Vehicle security system with keyless entry. Approach Lighting activated via remote control.
- Central locking system.
- Child locks for rear doors and power windows.
- Dual electrically adjustable heated exterior mirrors.
- Auto-dimming inside rearview mirror.
- Automatic quartz halogen headlights with headlight washers.
- Front and rear fog lights.
- Deep-tinted glass (aft of the B-pillar), including dual-panel panoramic sunroof.
- Electric rear-window defroster.
- Tire Pressure Monitoring System (TPMS) with individual tire sensing.

COMFORT & CONVENIENCE FEATURES

- Dual-zone automatic climate control with programmed defrost.
- Outside-temperature display.
- Leather seating surfaces.
- Dark Eucalyptus trim. Pixel Metallic trim available with Ebony Black leather.
- Push-button start.
- Electronic cruise control with steering-wheel-mounted controls.
- Leather-wrapped tilt-and-telescopic steering wheel.
- Reclining, ergonomically designed, eight-way power adjustable driver's seat and six-way power adjustable front-passenger seat.
- Power windows all have a one-touch "down" feature.
- Power tilt-and-slide panoramic dual-panel sunroof with integrated sun blinds.
- "Time out" feature (retained accessory power after ignition is shut off) for power windows, sunroof and power front seats.
- Front and rear cupholders. Door-mounted bottle holders in front and rear doors.
- Full instrumentation, including tachometer. LED illumination. Fuel-filler-door indicator.
- Multifunction trip computer.
- Rear Park Distance Control (PDC).
- Variable intermittent rain-sensing windshield wipers. Rear-window washer and wiper. Automatic operation of rear wiper with front wipers when Reverse is engaged.
- 60:40 split folding rear seat.



AUDIO SYSTEM

- 320-watt Alpine AM/FM stereo audio system with six-disc in-dash CD changer and nine speakers.
- Auxiliary input for iPod or similar music device.
- Glass-mounted diversity antenna system.
- Steering-wheel-mounted audio controls.

OPTIONS

- Cold Climate Package.² Includes heated front seats, heated front windshield and heated windshield-washer jets.
- SIRIUS Satellite Radio⁴ and Personal Telephone Integration system with Bluetooth.⁵
- Technology Package.³ Includes DVD-based GPS navigation system, 440-watt Dolby Pro Logic II 7.1 surround-sound audio system with 14 speakers, rear-seat audio controls, SIRIUS Satellite Radio⁴ and Personal Telephone Integration system with Bluetooth capability.⁵
- Lighting Package. Includes bi-Xenon headlights, Adaptive Front-Lighting System, approach and puddle lights, and memory system for driver's seat and exterior mirrors.
- 18-inch alloy wheels with 235/60R18 radial tires (no-cost option).

1. Please remember that the safety belts in LR2 constitute the primary protection system for driver and passengers in collisions. The airbag Supplemental Restraint System (SRS) is a supplement to the safety belts. Although airbags provide additional protection, airbags alone are not sufficient. Always wear your safety belts. Children younger than 12 years old should always be properly restrained in a back seat, away from airbags. Never place an infant seat in the front seat.

All information, specifications and illustrations contained herein are based on the latest product information available at time of publication. Land Rover North America and Land Rover Canada reserve the right to make changes at any time, without notice, to colors, materials, equipment, specifications and models, and are not responsible for typographical errors. Such changes may affect vehicle pricing and vehicle content. Not all models of Land Rover products are available in every market. Consult your Land Rover Retailer for advice on correct specifications. Equipment on Canadian models may vary. "SIRIUS" is a registered trademark of SIRIUS Satellite Radio Inc. iPod is a registered trademark of Apple Computer, Inc. All rights reserved. Dolby is a registered trademark of Dolby Laboratories. Alpine is a registered trademark of Alps Electric Co., Ltd. Smart Wire and Optikool are registered trademarks. Some vehicles shown with optional equipment.

WARRANTIES & OWNER SUPPORT PROGRAMS

- 4-year/80,000-km (50,000-mile) New-Vehicle Limited Warranty.⁶
- 6-year/unlimited-mileage Corrosion Perforation Limited Warranty.⁶
- Land Rover 24-hour Roadside Assistance.⁶
- Complimentary Scheduled Maintenance Program.⁶

CANADIAN MODELS ONLY

Standard Equipment

- Daytime running lights.
- Cold Climate Package.

Options

- DVD-based GPS navigation system.
- Premium Sound Package with 440-watt Dolby Pro Logic II 7.1 surround-sound audio system with 14 speakers and rear-seat audio controls.
- Lighting Package.
- Personal Telephone Integration system with Bluetooth capability.⁵
- 18-inch wheels and tires (no-cost option).

2. Standard on Canadian models.

3. Not available as a package in Canada. See "Canadian Models Only" for stand-alone options.

4. Subscription not included. Not available in Alaska, Hawaii or Canada.

5. See your Land Rover Retailer for compatible Bluetooth phones.

6. See your Land Rover Retailer for details.

Exterior & interior color matrix

Exterior Finish	Leather Seating	Interior Trim	Passenger-Area Carpet	Loadspace Carpet
Baltic Blue Metallic	Alpaca Beige	Dark Eucalyptus	Beige	Black
	Ebony Black	Dark Eucalyptus or Pixel Metallic ²	Black	Black
Narvik Black ¹	Alpaca Beige	Dark Eucalyptus	Beige	Black
	Ebony Black	Dark Eucalyptus or Pixel Metallic ²	Black	Black
Nazca Sand Metallic	Alpaca Beige	Dark Eucalyptus	Beige	Black
	Ebony Black	Dark Eucalyptus or Pixel Metallic ²	Black	Black
Rimini Red Metallic	Alpaca Beige	Dark Eucalyptus	Beige	Black
	Ebony Black	Dark Eucalyptus or Pixel Metallic ²	Black	Black
Stornoway Grey Metallic	Alpaca Beige	Dark Eucalyptus	Beige	Black
	Ebony Black	Dark Eucalyptus or Pixel Metallic ²	Black	Black
Izmir Blue Metallic	Alpaca Beige	Dark Eucalyptus	Beige	Black
	Ebony Black	Dark Eucalyptus or Pixel Metallic ²	Black	Black
Alaska White	Alpaca Beige	Dark Eucalyptus	Beige	Black
	Ebony Black	Dark Eucalyptus or Pixel Metallic ²	Black	Black
Zermatt Silver Metallic	Alpaca Beige	Dark Eucalyptus	Beige	Black
	Ebony Black	Dark Eucalyptus or Pixel Metallic ²	Black	Black



Alpaca Beige Leather



Ebony Black Leather



Dark Eucalyptus Interior Trim



Pixel Metallic Interior Trim

1. This exterior color is scheduled to be replaced by Santorini Black in 2008. See your Land Rover Retailer for details. Both Narvik Black and Santorini Black are extra-cost options.

2. Dark Eucalyptus trim is standard. Pixel Metallic is a no-cost option with Ebony Black interiors only.

Some vehicles shown in this brochure have optional equipment or are European specification. North American specification vehicles may vary.

Availability of certain exterior and interior color combinations may be limited. Please consult your Land Rover Retailer. Land Rover North America and Land Rover Canada reserve the right to alter or withdraw any color finish without notice. The colors shown are intended primarily as a guide, and, although they closely approximate the actual colors used, they are not to be used for paint matching or for any other purpose for which complete accuracy is essential.

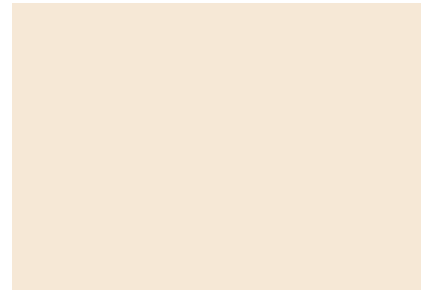
Exterior colors



Baltic Blue Metallic



Narvik Black¹



Nazca Sand Metallic



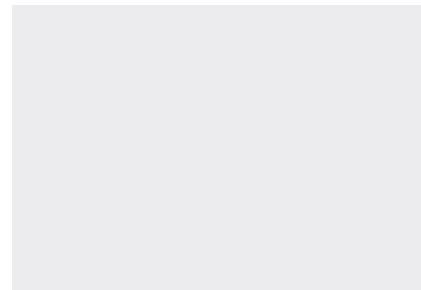
Rimini Red Metallic



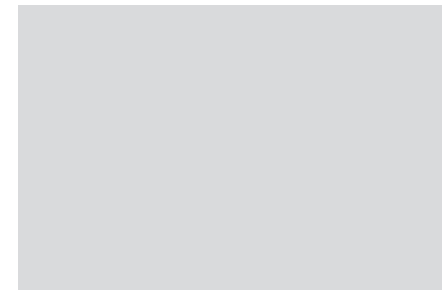
Stornoway Grey Metallic



Izmir Blue Metallic



Alaska White



Zermatt Silver Metallic



This Land Rover brochure is printed on recycled paper that contains a minimum of 10% post-consumer (PCW) fiber. This recycled paper is made from fiber sourced from well-managed forests and other controlled wood sources and is independently certified by SmartWood, a program of the Rainforest Alliance, to the Forest Stewardship Council (FSC) standards.

FSC is an independent nonprofit organization devoted to encouraging the responsible management of the world's forests. FSC sets high standards to ensure that forestry is practiced in an environmentally responsible, socially beneficial, and economically viable way.

Please recycle this brochure after use.

© 2007 Land Rover North America, Inc.
Land Rover North America, Inc.
555 MacArthur Blvd.
Mahwah, NJ 07430
landroverusa.com

© 2007 Land Rover Canada
Land Rover Canada
8 Indell Lane
Bramalea, Ontario L6T 4H3
landrover.com/ca

1-800-FIND 4WD
Printed in USA





1-800-FIND 4WD
USA - landroverusa.com
Canada - landrover.com/ca