

# Saturn 2008 AURA





Don't buy it because it's **American**<sup>1</sup>. Buy it because it's amazing. Buy it because it turns heads. And overturns opinions. Buy it because it gets all the little things right. And the big ones too. Buy it for the state-of-the-art safety features. The EPA-estimated 30-mpg highway fuel economy. The value it provides. **Buy it because it slays skeptics.** Changes the game. And will take on all challengers. **Really, what could be more American than that?**



**Rethink Assumptions. Rethink American.**  
Introducing the 2008 Saturn AURA™ Sport Sedan.



<sup>1</sup>Assembled in Fairfax, KS, with U.S. and globally sourced parts.



**Rethink** keeping  
up with the Joneses.



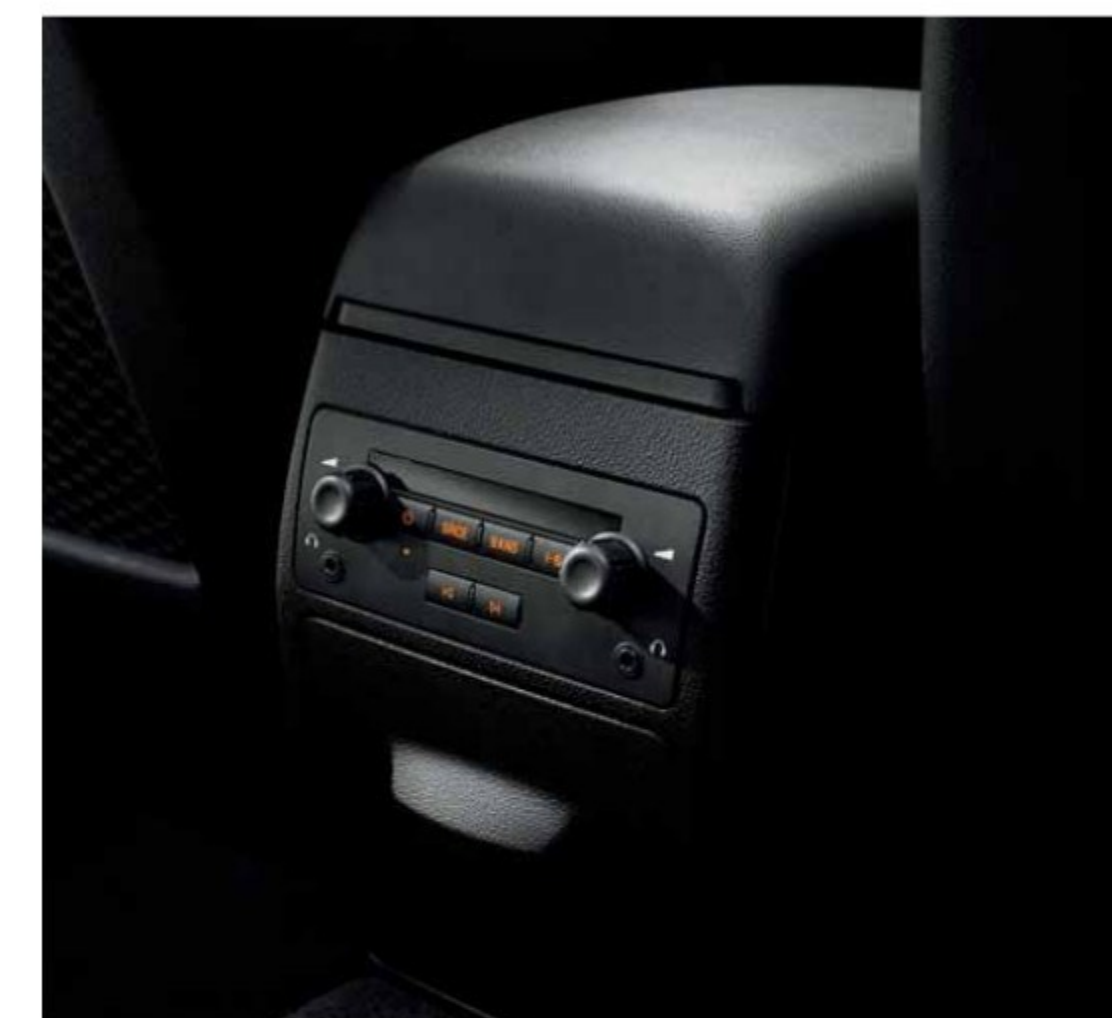
**CREATES CARPOOL ENVY.** The AURA's bold, arresting exterior with chrome accents, distinctive headlamps and taut lines will challenge other drivers to keep their eyes on the road. Don't worry, you'll get used to all the attention.



**IT'S A BEAUTIFUL DAY OUT.** And you'll find it just as pleasant inside the AURA, with its well-appointed and refined interior. The seamless, flowing design of everything around you. The available power sunroof that brings in the sky with a touch of a button. And of course, that fresh-as-a-daisy new car smell.



Over **55** innovative  
**noise-reduction features.**



We'll keep everything quiet. From the acoustic laminated front windows to the double-sealed doors, Saturn engineers have created a surprisingly quiet and relaxing cabin. They've wrapped all the interior pillars in fabric for an added level of refinement. And even wind tunnel-tested the outside mirrors to reduce cabin noise.





**TAKE YOUR MUSIC TO GO.** An iPod®/MP3 input jack\* will keep you plugged into the latest tunes. So will the standard XM Radio® with a three-month trial service and 69 channels of commercial-free music, plus news, sports and talk radio. ((XM))



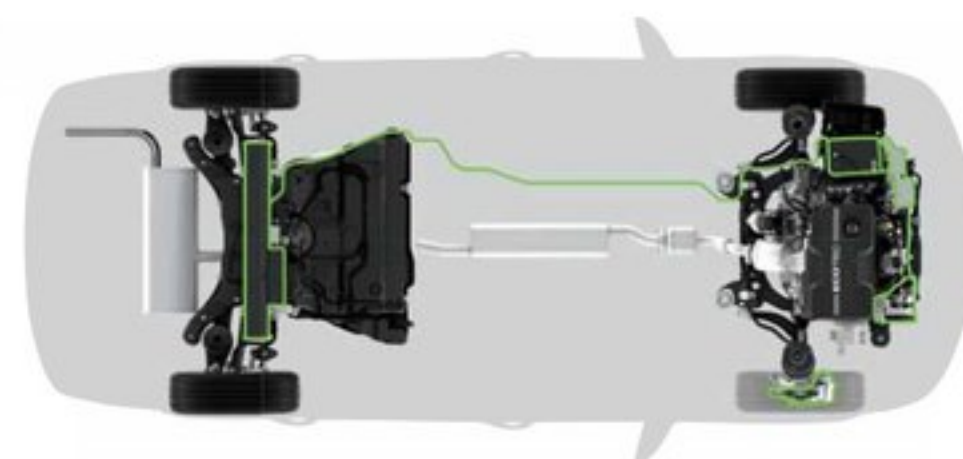
**YOUR COFFEE TOO.** With the conveniently located cupholders, you'll have no problem finding your next adrenaline fix. But if that's not enough, there's always the available 240-watt, six-disc, eight-speaker Advanced Audio Package with audio controls in the rear to keep your back-seat passengers happy.



It's right in your comfort zone. Everything is designed to make you want to stay, long after you've turned off the engine. Stylized stitching detail gives the available leather-appointed seats a feeling of elegance. Premium tactile surface materials make you want to touch all the controls. The soft amber interior lighting helps illuminate key features. And fourteen different ways to adjust the driver's seat, steering column, and front-seat head restraints ensure you fit in perfectly.



# Rethink the grass is always greener.



The AURA Green Line (limited availability). To make it easier for everyone to own a **HYBRID**, Saturn engineers developed a system that's simple and remarkably affordable. In fact, it's the most affordable midsize hybrid sedan on the market.<sup>1</sup> At an EPA-estimated 24 mpg in the city and 32 mpg on the highway, the AURA Green Line delivers a significant improvement over the non-hybrid AURA. Plus, the IRS has certified a \$1,300 tax credit for the purchase of a 2008 AURA Green Line.<sup>2</sup> Maybe now we can all afford to think green. To get a more animated look at the driving experience, visit [saturn.com/auragreen](http://saturn.com/auragreen).

<sup>1</sup>Based on base MSRP in 2007 GM Mid-Car/Sedan segment and latest available competitive information. Level of equipment varies. Excludes other GM vehicles. <sup>2</sup>Consult your tax specialist before claiming any tax credits. <sup>3</sup>Based on 2007 GM Mid-Car/Sedan segment. Excludes other GM vehicles.



**5-STAR CRASH SAFETY RATING.** The AURA received the highest rating from the National Highway Traffic Safety Administration (NHTSA) for frontal crashes and for side impacts, both front and rear. Pretty impressive? It was all by design.



**ONSTAR.** Your AURA comes with one year of OnStar, which can provide you with Advanced Automatic Crash Notification. So even if you're involved in a collision and your air bags don't deploy, your vehicle can automatically send a signal to an OnStar Advisor who will contact you to see if you need help. This is just one of the many features OnStar offers along with available Turn-by-Turn Navigation, where an automated voice guides you to your destination. Safety, of course.



**BUILDING CONFIDENCE.** We gave the AURA a high-strength steel-reinforced safety cage as well as front and rear impact-absorbing crumple zones. Steel side-intrusion beams in the front doors provide front passengers with even more peace of mind.

## safety features.

**SAFETY IS NOT A LUXURY.** Safety has been a standard feature in every Saturn we've ever built. And that's not changing. The AURA comes with six standard air bags, which include dual-stage front air bags that can instantly detect the severity of a crash and then deploy at one of two levels. Head curtain side air bags that instantly drop down to protect front and outboard rear-seat occupants during lateral impact. And front seat-mounted thorax protection air bags that help protect your chest during certain side impacts. It's safety for all.



\*iPod® is a mobile digital device. iPod® is a trademark of Apple, Inc., registered in the U.S. and other countries. All rights reserved. <sup>1</sup>Available only in the 48 contiguous United States. After three months trial service, required \$12.95 monthly subscription sold separately. All fees and programming subject to change. Subscription subject to customer agreement. For more information, visit [gm.xmradio.com](http://gm.xmradio.com).





Good genes run  
in the family.

Say hello to our full line of vehicles, from the small and sporty to the midsize sedan and all the way to an 8-passenger crossover. To learn more, visit [saturn.com](http://saturn.com).

The Saturn show room  
has a very familiar  
address. Yours.

To schedule your at-home or in-office test drive,  
visit [saturn.com](http://saturn.com) to find a participating retailer near you.







Do we have to lower our expectations to be happy? Maybe it's time to raise our expectations. Along with raising a few eyebrows. Because there's a four-door sedan that offers more than four doors. State-of-the-art safety features. A choice of a 4- or 6-cylinder or hybrid engine. A quiet, comfortable ride. And happiness that comes as standard equipment. Just something to rethink about.

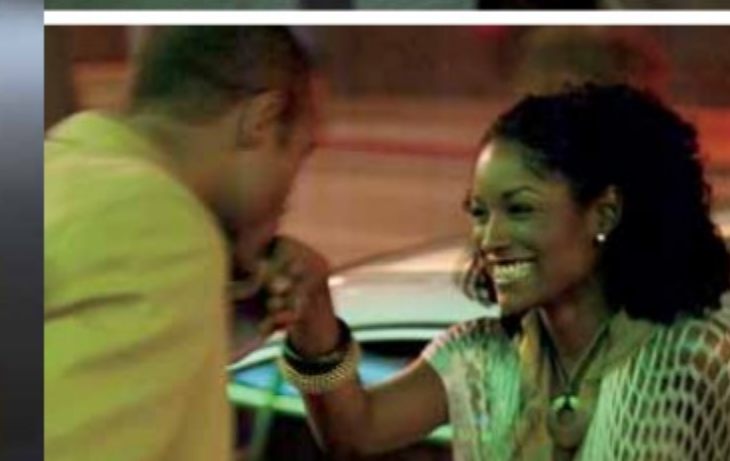


More than the sum of its cylinders. Our engineers designed a 164-hp, 2.4-liter, 4-cylinder engine that's remarkably quiet and smooth. With Variable Valve Timing, this powertrain delivers enhanced low- and mid-range torque for impressive acceleration and passing ability.

It's even more impressive inside the car. Because that's when you really feel the power of the available 252-hp, 3.6-liter, V6 engine with Variable Valve Timing. And how the entire car is designed to maximize every bit of it. Especially coupled with the 6-speed transmission and TAPshift® steering wheel-mounted shifters, features not normally found in cars in this class.<sup>3</sup> The tight, responsive rack-and-pinion steering and the available 18-inch alloy wheels and tires also do their best to help keep you, and your attention, glued to the road.



# 252-hp V6





# Over 95 innovative

(Safety in numbers goes without saying.)

STABILITRAK® VEHICLE STABILITY CONTROL. We equipped it with four-wheel disc brakes with ABS to help prevent skidding, Traction Control to reduce wheel spin, and the sophisticated StabiliTrak® system with Brake Assist<sup>1</sup> which minimizes over- and under-steer to help maintain control during extreme maneuvers.

#### HERE ARE 18 MORE SAFETY FEATURES:

- Energy-absorbing steering column
- Child safety locks in the rear doors
- Lower Anchorages and top Tethers for Children (LATCH)
- Front Passenger Sensing System
- Three-point safety belts for all positions
- Dynamic brake proportioning
- Emergency trunk release
- Automatic door locks
- Tire Pressure Monitor
- Daytime Running Lamps (DRL)
- Front safety belt pretensioners
- Anti-submarining seats
- High-strength steel structure
- Front and rear crumple zones
- Energy-absorbing interior materials
- Safety belt load limiters
- Encoded key
- Battery rundown protection

<sup>1</sup>Five-star rating is for the driver and front passenger seating positions in the frontal crash test and for the front and rear seating positions in the side-impact crash test. Side-impact crash test rating is for the model tested with standard head curtain side air bags (SABs). Government star ratings are part of the National Highway Traffic Safety Administration's (NHTSA's) New Car Assessment Program ([www.safercar.gov](http://www.safercar.gov)).  
<sup>2</sup>Call 1-888-4ONSTAR (1-888-466-7827), visit [onstar.com](http://onstar.com), and see inside back cover for system limitations and details. <sup>3</sup>Requires Directions & Connections Plan. Not available in certain areas. Visit [onstar.com](http://onstar.com) for coverage maps. <sup>4</sup>Air bag inflation can cause severe injury or death to anyone close to the bag when it deploys. Be sure every occupant is properly restrained. See inside back cover of this brochure for an important note about air bags and child safety. <sup>5</sup>Not available on XE 4-cylinder.



Shown from left to right: OUTLOOK™, ASTRA® 3-door, AURA, SKY® (limited availability), ASTRA 5-door, VUE® (ASTRA available late 2007.)

## What if a car company didn't act like a car company?

You'd ask yourself, what are they thinking? This can't be right. But it is. In fact, it's what we've been doing since day one. That's the Saturn way. And you notice it the second you walk into a Saturn retailer. We offer a no-hassle, no-haggle philosophy. We give you straightforward answers. We can bring cars to you to test-drive! We give you 30 days to make sure the vehicle you've chosen is the right one.<sup>2</sup> And you know what? After all is said and done, we wouldn't change a single thing. Just something to rethink about.

#### FEEL FREE TO PICK YOUR SATURN APART. (WE DID.)

Quality control is something everyone at Saturn takes seriously. In fact, they don't even need the words "Quality Control" in their job title to make it their number-one priority. It's the responsibility of everyone who touches a Saturn, from the people who design, engineer, assemble and test them to the people who hand you the keys. It's what makes a Saturn, well, a Saturn.



SATURN

100,000 MILE  
WARRANTY  
5-YEAR POWERTRAIN

The amount of care and attention doesn't end the moment you leave the Saturn retailer. You'll get the best coverage in America: the Saturn 100,000-mile/5-year Transferable Powertrain Limited Warranty, plus Roadside Assistance and Courtesy Transportation.<sup>3</sup>

#### POWERTRAIN LIMITED WARRANTY

This fully transferable warranty is for 2008 Saturn vehicles registered in the U.S. See your Saturn retailer for terms and conditions. Covered for 5 years/100,000 miles (whichever comes first): most engine, transmission, transfer case and axle assemblies.

<sup>1</sup>At participating retailers. <sup>2</sup>See inside back cover of this brochure for information on Saturn's Vehicle Exchange Program. <sup>3</sup>Whichever comes first. See retailer for details.



# 2008 Accessories

- 18" chrome alloy wheels<sup>1,2</sup>
- Front-end cover
- Rear spoiler
- Molded splash guards (front/rear)
- 17" chrome wheels<sup>2</sup>
- Premium all-weather floor mats
- Trunk cargo net
- Portable music player connector cable
- Locking gas cap
- Wheel locks
- Smoker's Package
- Highway emergency kit

1 Not available on Green Line. 2 Use only GM-approved tire and wheel combinations. See your retailer for details.

Fully Backed By Saturn. Saturn Accessories permanently installed at the time of new-vehicle delivery are covered under the New Vehicle Limited Warranty. If installed after delivery, coverage (parts and labor) is for the balance of the New Vehicle Limited Warranty or a minimum of 12 months/12,000 miles (whichever comes first). Saturn Accessories not requiring installation or purchased over the counter carry a 12-month warranty (parts only). Does not apply to licensed products.

**IMPORTANT WORDS ABOUT THIS CATALOG**  
We have tried to make this catalog comprehensive and factual. We reserve the right, however, to make changes at any time, without notice, in prices, colors, materials, equipment, specifications, models and availability. Specifications, dimensions, measurements, ratings and other numbers in this catalog and other printed materials provided at the retailer or affixed to vehicles are approximates based upon design and engineering drawings and prototypes and laboratory tests. Your vehicle may differ due to variations in manufacturer and equipment. Because some information may have been updated since the time of printing, please check with your Saturn retailer for complete details. Saturn reserves the right to lengthen or shorten the model year for any product for any reason, or to start and end model years at different times.

**A NOTE ABOUT AIR BAGS AND CHILD SAFETY**  
Always use safety belts and the correct child restraint for your child's age and size. Even in vehicles equipped with air bags and the Passenger Sensing System, children are safer when properly secured in a rear seat in an appropriate infant, child or booster seat. Never place a rear-facing infant restraint in the front seat of any vehicle equipped with an active frontal air bag. Airbag inflation can cause severe injury or death to anyone too close to the bag when it deploys. Be sure every occupant is properly restrained. See your vehicle owner's manual and child safety seat instructions for more information.

**ONSTAR® INFORMATION**  
OnStar services require vehicle electrical system (including battery), wireless service and GPS satellite signals to be available and operating for features to function properly. OnStar acts as a link to existing emergency service providers. Subscription Service Agreement required. Call 1-888-4ONSTAR (1-888-466-7827) or visit onstar.com for OnStar's Terms and Conditions, Privacy Policy, and system limitations and details.

**SATURN'S VEHICLE EXCHANGE PROGRAM**  
Within the first 30 days or 1,500 miles of delivery, whichever comes first, the original purchaser may exchange his or her Saturn vehicle if not completely satisfied. In the event that an owner returns his or her vehicle, he or she will exchange it for another 2008 Saturn vehicle. See retailer for limitations and restrictions. All the same factory-supported initiatives will be included on the exchange vehicle that was on the original vehicle. The vehicle must be returned in the condition in which it was delivered, without damage or excessive wear and tear. If non-warranty repairs equal to or greater than \$300 have been performed or are necessary, the vehicle is not eligible to be returned; if less than \$300, the damage must be repaired or the estimate deducted from the credit toward the exchange vehicle.

**NEW VEHICLE LIMITED WARRANTY**  
This warranty is for Saturn vehicles registered in the United States. See your Saturn retailer for terms and conditions. Covered for 3 years/36,000 miles (whichever comes first): the complete vehicle, tires, towing to your nearest Saturn retailer, cosmetic corrosion resulting from defects, repairs made to correct any vehicle defect, with no charge for most warranty repairs. Covered for 6 years/100,000 miles (whichever comes first): rust-through corrosion. Covered for 8 years/100,000 miles (whichever comes first): certain hybrid components. See retailer for details.

**CORROSION PROTECTION**  
Saturn vehicles are designed and built to resist corrosion. All body and sheet metal components are warranted against rust-through corrosion for 6 years or 100,000 miles, whichever comes first. Application of additional rust-inhibiting materials is not required under the corrosion coverage and none is recommended. See your Saturn retailer for terms of this limited warranty.

**AN IMPORTANT NOTE ABOUT ALTERATIONS AND WARRANTIES**  
Installations or alterations to the original equipment vehicle (or chassis) as distributed by GM are not covered by the Saturn New Vehicle Limited Warranty. The special body company, assembler, equipment installer or upfitter is solely responsible for warranties on the body or equipment and any alterations (or any effect of the alterations) to any of the parts, components, systems or assemblies installed by GM. GM is not responsible for the safety or quality of design features, materials or workmanship of any alterations by such suppliers.

**ASSEMBLY**  
Saturn vehicles and their components are assembled or produced by different operating units of GM, its subsidiaries or suppliers to GM worldwide. We sometimes find it necessary to produce Saturn vehicles with different or differently sourced components than originally scheduled. Because some options may be unavailable when your vehicle is assembled, we suggest you verify that your vehicle includes the equipment you ordered, or if there are changes, that they are acceptable to you.

**ENGINES**  
Saturn products are equipped with engines produced by GM Powertrain or other suppliers to GM worldwide. The engines in Saturn products may also be used in other GM makes and models.

**FUEL ECONOMY**  
Commencing with 2008 model-year vehicles, EPA revised its methods for estimating vehicle fuel economy. The new test methods will likely lower mpg estimates as compared to 2007 and previous model-year vehicles. These new methods are intended to better represent current driving styles, varying road and weather conditions, and certain other external factors.

**UPDATED SERVICE INFORMATION**  
Saturn retailers receive useful service bulletins about Saturn products. See your retailer for more information.

**GM MOBILITY**  
GM Mobility assists people with unique transportation needs by offering a variety of resources, including after-market adaptive equipment. Speak to a knowledgeable Assistance Center representative at 1-800-323-9935 (TTY users: 1-800-833-9935) or visit gm/mobility.com for more information.



Front-end cover



17" chrome wheels



Premium all-weather floor mats



Trunk cargo net



Splash guards

## AURA Specifications/Features

POWERTRAIN AND CHASSIS	XE I-4	XE V6	XR	GREEN LINE®
Engine	2.4-liter, DOHC, 16-valve, VVT I-4	3.5-liter, OHV, 24-valve, VVT V6	3.6-liter, DOHC, 24-valve, VVT V6	2.4-liter, DOHC, 16-valve, VVT I-4
Horsepower (hp/kW @rpm)	164/122 @6,400	219/163 @5,900	252/188 @6,300	164/122 @6,400
Torque (lb.-ft./Nm @rpm)	159/215 @5,000	219/297 @3,200	251/340 @3,200	159/215 @5,000
Transmission	4-speed automatic	4-speed automatic	6-speed automatic with TAPshift®	Green Line-specific 4-speed automatic
Steering	Hydraulic-assisted power rack and pinion	Hydraulic-assisted power rack and pinion	Hydraulic-assisted power rack and pinion	Variable-effort, electric-assisted power rack and pinion
Drivetrain	Front-engine/front-wheel drive			
Body construction	Body frame integral steel safety cage with front and rear crumple zones and side-impact protection			
Suspension	MacPherson strut front and 4-link independent rear with front and rear stabilizer bars			
Brakes	Four-wheel disc brakes with ABS and dynamic brake proportioning			

WEIGHTS AND CAPACITIES				
Curb Weight (lbs.)	3,446	3,585	3,635	3,529
Passenger volume (cu. ft.)	97.7	97.7	97.7	97.7
Passenger seating	5	5	5	5
Cargo-area volume (cu. ft.)	14.9	14.9	14.9	13.1
Fuel capacity (approx. gal.)	16.4	16.4	16.4	16.4

INTERIOR DIMENSIONS (FRONT/REAR IN.)				
Headroom	39.4/37.4	39.4/37.4	39.4/37.4	39.4/37.4
Legroom	42.2/37.6	42.2/37.6	42.2/37.6	42.2/37.6
Hip room	53.0/54.0	53.0/54.0	53.0/54.0	53.0/54.0
Shoulder room	55.9/54.0	55.9/54.0	55.9/54.0	55.9/54.0

EPA-ESTIMATED MPG (CITY/HWY)	XE I-4	XE V6	XR	GREEN LINE®
Automatic transmission	22/30	18/29	17/26	24/32

COMFORT AND CONVENIENCE				
Acoustic laminated front door glass	●	●	●	●
Air conditioning	●	●	●	●
Automatic climate control	—	—	●	●
Center console with automatic sliding tambour door, dual cupholders, coin well, cell phone holder, padded sliding armrest, dual bin storage and 12-volt power outlet	●	●	●	●
Preferred Package: 8-way power driver's seat adjuster, steering wheel-mounted audio controls and leather-wrapped steering wheel and shift knob	○	○	—	○
Convenience Package: remote vehicle start, heated front seats, universal home remote, outside heated power-adjustable mirrors with driver's side auto-dimming, and auto-dimming inside rearview mirror with compass display <sup>5</sup>	○	○	●	—
Driver Information Center with dual tripometers, fuel range, fuel economy, average speed, outside temperature, vehicle mileage and oil-life monitors, personalization options and warning messages	●	●	●	●
Enhanced Convenience Package: 6-way power front passenger seat adjuster and power-adjustable pedals <sup>5</sup>	—	○	○	—
Front and rear floor mats	—	●	●	—
Premium floor mats with AURA embroidery including front, rear and trunk mats <sup>5</sup>	—	○	○	—
LED ambient interior illumination for overhead and door pockets	—	—	—	—
Power height-adjustable driver's seat with manual lumbar adjustment	●	●	●	●
Power windows with driver's express down and up and power programmable door locks with rear passenger lockout	●	●	●	●
Premium Trim Package: leather-appointed seats; heated driver's and front passenger's seats on XE V6	—	○	○	—
Tilt and telescoping steering wheel with cruise control and Driver Information Center buttons	●	●	●	●
Front bucket seats with driver manual lumbar control and adjustable head restraints	●	●	●	●
Rear seatbacks, 60/40-split folding with outboard adjustable head restraints	●	●	●	●
Remote keyless entry with extended range	●	●	●	●
Rear window defogger	●	●	●	●
Retained accessory power	●	●	●	●
TAPshift manual shift control on steering wheel	—	—	—	—
Sunroof: power tilt-sliding with sunshade <sup>5</sup>	○	○	○	○
Green Line LED analog instrumentation: charge/assist gauge, eco light and autopost indicator	—	—	—	●
LED analog instrumentation: speedometer, temperature, fuel, tachometer, and Driver Information Center	●	●	●	—
Trunk release: power, remote	●	●	●	●
Visors: driver and front passenger illuminated vanity mirrors	●	●	●	●
Body-colored door handles	●	●	—	●
Chrome door handles	—	—	●	—
Power-adjustable, body-colored, folding outside mirrors	●	●	●	●

SAFETY AND SECURITY				
Dual-stage driver and front passenger air bags with Passenger Sensing System <sup>4</sup>	●	●	●	●
Side-impact air bags for driver and front passenger <sup>4</sup>	●	●	●	●
Front and outboard rear head curtain side air bags <sup>4</sup>	●	●	●	●
Height-adjustable, 3-point front safety belts with pretensioners	●	●	●	●
3-point safety belts for all rear seating positions	●	●	●	●
Lower Anchorages and top Tethers for Children (LATCH) for all rear seating positions	●	●	●	●
Child security locks	●	●	●	●
StabiliTrak® vehicle stability control system with Brake Assist	—	●	●	●
Traction Control	●	●	●	●
Halogen headlamps with automatic exterior lamp control, daytime running lamps and LED tail lamps	●	●	●	●
Front projector beam foglamps	—	—	●	—
Tire Pressure Monitor	●	●	●	●
Tire inflator kit (replaces spare tire and jack)	—	—	—	●
Compact spare tire with jack and tool kit	●	●	●	—
Security system and engine-immobilizing theft-deterrent feature	●	●	●	●
Rear-window defogger	●	●	●	●
OnStar® with one-year Safe & Sound Plan <sup>7</sup>	●	●	●	●

ENTERTAINMENT SYSTEMS				
AM/FM stereo with CD player and MP3 playback with 6 speakers, digital dock, Radio Data System (RDS), speed-compensated volume, XM Radio and auxiliary input jack	●	●	—	●
Advanced Audio Package: 240-watt AM/FM stereo with 6-disc in-dash CD and MP3 player with 8 speakers, Saturn Advanced Audio System and rear seat audio controls with wireless headphones <sup>6</sup>	○	○	●	—
XM Radio with three-month trial service <sup>7</sup>	●	●	●	●

● = standard ○ = available — = not available

1 Limited availability. 2 Requires Preferred Package on XE. 3 Requires Preferred Package on XE and Green Line models. 4 See panel on the left for important information about air bags, including a note about child safety. 5 Call 1-888-4ONSTAR (1-888-466-7827), visit onstar.com or see panel on the left for system limitations and details. 6 Requires Preferred Package and Convenience Package. 7 Available in the 48 contiguous United States. After three months trial service, required \$12.95 monthly subscription sold separately. All fees and programming subject to change. Subscription subject to customer agreement. For more information, visit gm.xmradio.com.

## Exterior Paint

Deep Blue	Cream White	Bronzed Pewter
Carbon Flash*	Silver Pearl	Techno Gray
Ocean Mist	Red Jewel Tintcoat*	Golden Cashmere

## Standard Interior Fabrics

XE Gray	XE Tan	XR Black

## Color Combinations

EXTERIOR PAINT	CLOTH: XE/ GREEN LINE	AVAILABLE LEATHER: XE	CLOTH: XR	AVAILABLE LEATHER: XR
Deep Blue	Gray/Tan	Gray/Tan	Black	Black/Morocco Brown/Gray/Tan
Cream White	Gray/Tan	Gray/Tan	Black	Black/Morocco Brown/Gray/Tan
Bronzed Pewter	Tan	Tan	Black	Black/Morocco Brown/Tan
Carbon Flash*	Gray/Tan	Gray/Tan	Black	Black/Morocco Brown/Gray/Tan
Silver Pearl	Gray	Gray	Black	Black/Morocco Brown/Gray
Techno Gray	Gray	Gray	Black	Black/Morocco Brown/Gray
Ocean Mist	Gray/Tan	Gray/Tan	Black	Black/Morocco Brown/Gray/Tan
Red Jewel Tintcoat*	Gray/Tan	Gray/Tan	Black	Black/Gray/Tan
Golden Cashmere	Tan	Tan	Black	Black/Morocco Brown/Tan

\* Available at additional charge.

## Dimensions



## Wheels

	16" STANDARD ALLOY (Green Line)
	17" STANDARD TRIM (XE I-4, XE V6)
	17" AVAILABLE CHROME TRIM (XE I-4, XE V6)
	17" AVAILABLE MACHINED ALLOY (XE V6)
	18" STANDARD ULTRABRIGHT ALLOY (XR)



See all of our vehicles at [SATURN.COM](http://SATURN.COM)

**SKY**  
Roadster

**ASTRA**  
Sport Compact

**AURA**  
Sport Sedan

**VUE**  
Compact SUV

**OUTLOOK**  
Crossover

Rethink American



**SATURN**

This brochure is printed on 60-lb. Environment Ultra Bright FSC-Certified Paper made with 20% FSC-Certified Virgin Fiber and **80% Post-Consumer Fiber**. The paper comes entirely from Green-e Certified renewable energy, and it's Green Seal-Certified as well as Certified Processed Chlorine-Free (PCF) by the Chlorine Free Product Association (CFPA). **It represents Saturn's commitment to helping the environment.**



**Mixed Sources**

Product group from well-managed forests and recycled wood or fiber  
[www.fsc.org](http://www.fsc.org) Cert no. SW-COC-2068  
© 1996 Forest Stewardship Council

