

# The 2024 Sportage HEV



Movement that inspires



# Reimagined innovation in motion

Sustainability and capability, leading-edge design and advanced technology - it all comes together in the all-wheel-drive 2024 Sportage HEV.



Kia Connect lets you remotely control engine start-up and cabin temperature from your smartphone.



An available hands-free Smart Power Liftgate makes it easy to access the generous cargo area.\*



Standard rear and available front parking sensors help you park perfectly — even in tight spaces.

\* Available feature. Visit [kia.ca](http://kia.ca) for full details.



A 12.3" multimedia interface gives you at-a-glance control of navigation, audio and various vehicle system functions.



Eco-friendly seat trim combines the rich look and feel of quilted leather with the durability and spill resistance of a synthetic.\*



Quick-shifting electronic Shift By Wire (SBW) technology and standard Drive Mode Select (DMS) that adjusts transmission, throttle, and steering response.



Infotainment/climate switchable controller share the same LCD softkey keyboard.

\* Available feature. Visit [kia.ca](http://kia.ca) for full details.

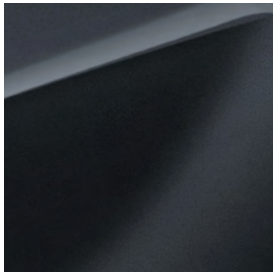
# Exterior colours



Snow White Pearl



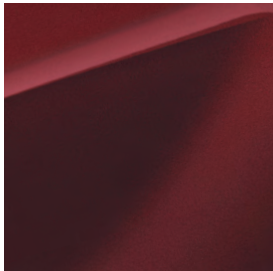
Steel Grey



Gravity Grey



Fusion Black



Dawning Red\*



Vesta Blue\*

\* Not available with Carmine Red leather seating.  
Some seating, paint and trim configurations may be limited.  
Visit [kia.ca](http://kia.ca) for full details.

# Interior colours



EX  
Black leather  
(synthetic)



SX  
Black quilted leather  
(synthetic)



SX  
Carmine Red quilted leather  
(synthetic)

# Wheels



EX  
17" alloy wheels



SX  
18" alloy wheels

# Features

## EX

### EXTERIOR

- 17" alloy wheels
- Temporary spare tire
- Automatic headlights
- LED MFR headlights
- LED positioning lights
- LED daytime running lights
- LED & bulb combination taillights
- LED high mounted stop lamp
- LED fog lights
- Solar glass
- Front safety windows
- Sound-reducing windshield
- Heated windshield
- Privacy tinted rear door glass
- Gloss black grille
- Power and heated sideview mirrors with signal repeaters
- Body coloured sideview mirrors
- Body coloured door handles
- Rain sensing wipers
- Trailer lighting pre-wiring
- Rear spoiler
- Roof rails

### SAFETY

- 8 airbags
- Electronic stability control (ESC)
- 4-wheel anti-lock braking system (ABS)
- Hill-assist control (HAC)
- Downhill brake control (DBC)
- Trailer stability assist (TSA)
- Advanced Forward Collision Avoidance Assist with Junction Turning Function<sup>1</sup>
- Lane keeping assist system (LKA)<sup>1</sup>
- Lane following assist (LFA)<sup>1</sup>
- Blind spot collision avoidance assist<sup>1</sup>
- Rear cross-traffic avoidance assist<sup>1</sup>
- Rear occupant alert<sup>1</sup>
- Tire pressure monitoring system (TPMS)
- Immobilizer
- Rearview camera with dynamic guidelines<sup>1</sup>
- Rear parking sensors<sup>1</sup>
- Central door lock
- Low washer fluid warning indicator

### TECHNOLOGY

- 12.3" multimedia interface with integrated navigation<sup>3</sup>
- 6-speaker audio
- HD radio
- SiriusXM<sup>®</sup> satellite radio<sup>5</sup>
- Kia Connect<sup>2,4</sup>
- USB charging port
- Media input port
- Bluetooth<sup>®</sup> hands-free cell phone connectivity<sup>2,6</sup>
- Apple CarPlay<sup>®</sup> and Android Auto<sup>™</sup> smartphone integration<sup>2,7,8</sup>
- 4.2" Supervision LCD/TFT instrument cluster
- Steering wheel-mounted audio controls
- Keyless entry
- Smart key with push-button start
- Remote car starter
- Electronic parking brake
- 12V cabin power outlet
- Smart cruise control (SCC)<sup>1</sup>
- Wireless phone charger<sup>2</sup>
- Auto-dimming rearview mirror
- HomeLink<sup>®</sup> system<sup>10</sup>
- Idle stop and go
- Drive Mode Select
- Ambient mood lighting

### INTERIOR

- Dual-zone automatic climate control
- Automatic defog system
- Rear climate ventilation
- Leather seats (synthetic)
- 60:40 split-folding rear seats
- Power adjustable driver's seat
- 2-way driver's seat lumbar support
- Heated front seats
- Tilt and telescopic steering wheel
- Heated steering wheel
- Leather-wrapped steering wheel
- Power windows with driver's window auto down
- Illuminated vanity mirrors

## SX - adds to or upgrades from EX

### EXTERIOR

- 18" alloy wheels
- Projection LED headlights
- LED taillights
- Panoramic sunroof
- Matte chrome and dark satin finish elements

### SAFETY

- Parking collision avoidance assist — reverse<sup>1</sup>
- Highway drive assist (HDA)<sup>1</sup>
- Blind view monitor<sup>1</sup>
- Surround view monitor<sup>1</sup>
- Front and rear parking sensors<sup>1</sup>
- Remote smart parking assist (RSPA)<sup>1</sup>

### TECHNOLOGY

- Harman Kardon<sup>®</sup> premium audio system<sup>9</sup>
- 12.3" Supervision LCD/TFT instrument cluster
- Smart power liftgate
- LED interior lighting

### INTERIOR

- Quilt-pattern leather seats (synthetic)
- Driver's seat memory function
- Power adjustable passenger's seat
- Air-cooled front seats
- Heated rear seats
- Alloy pedals
- Deluxe door scuff plates
- Satin chrome interior door handles

# Specifications

## Mechanical

Engine type / Electric motor	1.6L Turbo HEV / Permanent magnet synchronous motor
Configuration	Inline 4 cylinder, GDI
Horsepower (combined)	227 hp
Torque	258 lb-ft.
Transmission	6-speed automatic
Fuel system	Gasoline direct injection (GDI)
Drive type	All-wheel drive (AWD)
Recommended fuel	Regular unleaded

## Battery performance

Battery	270 Volt / 64kW (discharge) / 49kW (charge)
Chemistry	Lithium-ion polymer

## Measurements

Towing capacity <sup>1</sup>	2,000 lb
Fuel tank capacity	52 L
Cargo capacity behind 1 <sup>st</sup> row (cargo floor raised/lowered)	1,852/2,087 L (65.4/73.7 cu. ft.)
Cargo capacity behind 2 <sup>nd</sup> row (cargo floor raised/lowered)	977/1,119 L (34.5/39.5 cu. ft.)

## Fuel consumption

City / Highway (L/100km)	6.1/6.3
--------------------------	---------

Please visit [kia.ca](http://kia.ca) for full vehicle specifications.

# We've got you covered<sup>12</sup>

Kia engineers are passionate about producing vehicles that are exceptionally well-designed and reliable. Their dedication to quality and attention to detail give Kia the confidence to back every model with an outstanding warranty program.



**5-year/  
100,000 km**

Worry-free comprehensive warranty



**5-year/  
100,000 km**

Limited powertrain warranty



**8-year/  
150,000 km**

Limited EV components warranty



**5-year/  
unlimited km**

24-hour roadside assistance

## KIA Connect

A world of support services that enhance your security, comfort and confidence — every time you get behind the wheel.

Free for the first three years. See features page or visit [kia.ca](http://kia.ca) for full details.



## SiriusXM

With your new vehicle, enjoy access to SiriusXM® satellite radio from anywhere you go - while you're on the road, using the smartphone app, online, or even through your smart TV.

Free for the first 3 months. See features page or visit [kia.ca](http://kia.ca) for full details.



1. None of the features we describe are intended to replace the driver's responsibility to exercise due care while driving and are not a substitute for safe driving practices. Some features may have technological limitations. For additional information regarding the various features, including their limitations and restrictions, please refer to your vehicle's Owner's Manual. 2. Compatible smartphone required. Data rates may apply, please check with your wireless service provider. For wireless charging, certain smartphones may require a wireless charging-compatible case. 3. When equipped with the navigation system, French voice commands may be limited. 4. Kia Connect only available on select models and trims. Specific functionality may vary between models and trims. Destination Search is only available on vehicles with a navigation head unit. Certain functions are only accessible on the smartphone app and/or customer web portal and/or in-vehicle head unit. Service is free for the first three years from the day the vehicle was first registered. Monthly subscription may be applicable after the free period. Please consult your dealer for details. 5. SiriusXM satellite radio service includes 3 month trial and is available in the 10 provinces and three territories of Canada, and the 48 contiguous states of the U.S. Monthly subscription sold separately after three trial months. 6. The Bluetooth word mark and logos are registered trademarks owned by Bluetooth SIG, Inc. 7. Apple, the Apple logo, CarPlay, and iPhone are trademarks of Apple Inc., registered in the US and other countries. App Store is a service mark of Apple Inc. 8. Google, Google Play, Google Maps, and Android Auto are trademarks of Google Inc. 9. Harman Kardon is a registered trademark of Harman International Industries, Inc. All rights reserved. 10. HomeLink is a registered trademark of Johnson Controls, Inc. 11. When properly equipped. Do not exceed any weight ratings and follow all towing instructions in your Owner's Manual. 12. The Kia 5-year/100,000-km warranty includes various warranties and roadside assistance. Some restrictions apply. For more information call us at 1-877-542-2886 or visit to [kia.ca](http://kia.ca).

We make every effort to ensure that the product information in this brochure is accurate at the time of printing. Occasional changes in production, that affect the standard or optional equipment included on a specific model, may occur after printing which will not be reflected in this brochure. Kia Canada Inc. reserves the right to make these changes without notice or obligation. For this reason, please rely on [kia.ca](http://kia.ca) or your local Kia dealer for the very latest product information. Some vehicles shown may include optional equipment or may not be exactly as shown. Kia Canada Inc., by the publication and dissemination of this material, does not create any warranties, either expressed or implied, to any Kia products. Reproduction of the contents of this material without the expressed written approval of Kia Canada Inc. is prohibited. © Copyright 2023 Kia Canada Inc.



Movement that inspires