

# 1987 MITSUBISHI MIRAGE





# EFFICIENCY AND VERSATILITY REDEFINED

The Mitsubishi Mirage has eye-appeal, fresh responsive handling, and value. And now, Mirage has 4-door convenience.

The new Mirage 4-door is a stylish sedan with a radically raked windshield, plunging hoodline and extended front air dam that makes

Mirage one of the most efficient, wind resistant subcompacts on the road. This translates into excellent fuel efficiency, predictable handling and exceptional wind noise isolation.\*

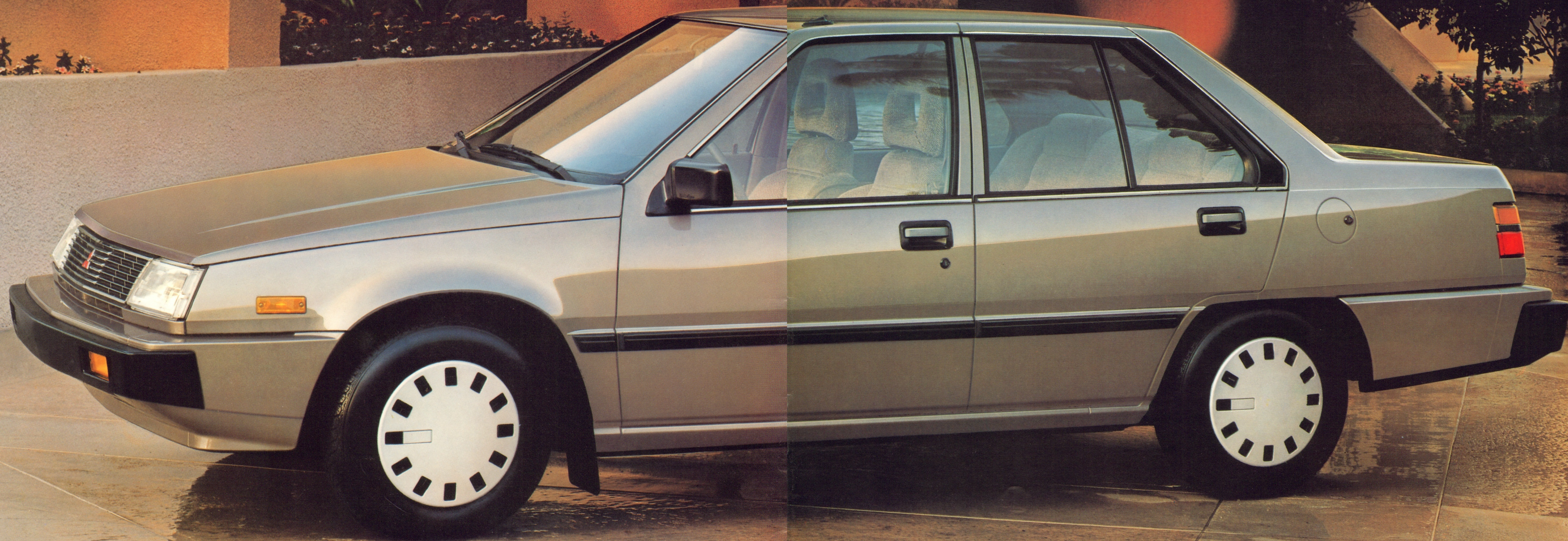
But what makes the Mirage sedan so appealing to families is the easy-to-enter rear doors, a trunk for family

gear, and a split fold down rear seat to allow cargo carrying versatility and entrance to the trunk.

The interior space is surprising. There's family room for five, thanks to a transverse mounted 1.5-liter, single overhead cam, 4-cylinder engine, teamed up with a specially engineered

short-throw 5-speed manual overdrive transmission. (A handy indicator light on the instrument panel tells you when to upshift for maximum economy).

Now you can enjoy dramatic styling and comfort in an economical package that puts the Mirage 4-door sedan in a class all its own.



MIRAGE 4-DOOR

\*See EPA mileage figures in specifications section.



# EXPERIENCE THE CONTROL



Small cars should be fun to drive, and Mitsubishi took this into account when designers laid out the user-friendly instrument panel.

Easy to read, familiar, analog instruments keep you informed of engine functions and speed. There's a resettable trip meter to keep track of how far you've traveled and a quartz clock to tell you how long it took to get there. On models equipped with a standard transmission, the panel has a "shift light," which tells you when to shift for maximum economy.

For comfort, Mirage features a

dual bi-level heating/ventilation system with a four speed fan, that lets you adjust the climate. It defrosts the windshield when needed and defogs the side windows to keep visibility clear.

Tinted glass is standard, and so is a two speed wiper/washer.

Owners have a choice of two optional four-speaker AM/FM stereo sound systems. One system includes a cassette deck for extra convenience.

The view through the expansive glass area, and over the hood gives a sensation of complete command and confidence.



# FEEL THE COMFORT

To test Mirage Sedan's commodious interior, bring along four friends. You'll find elbow room for five, with a comfortable bench seat in back, and reclining, bucket seats in front.

And when you're carrying cargo instead of people you'll find a surprising amount of space. The rear seat is split so it can be folded to allow access to the fully carpeted 10.9 cubic foot trunk. For little things that used to

clutter the interior, there are tuck-away spots in door map pockets or in pockets behind the front seat, and the full center console has space for things you want close at hand.

With tinted glass, convenient assist grips, driver-controlled trunk

and fuel filler door releases, power assist front disc brakes all standard, what's to add? The only available options are air conditioning, and your choice of two premium stereo sound systems—all pleasant choices.





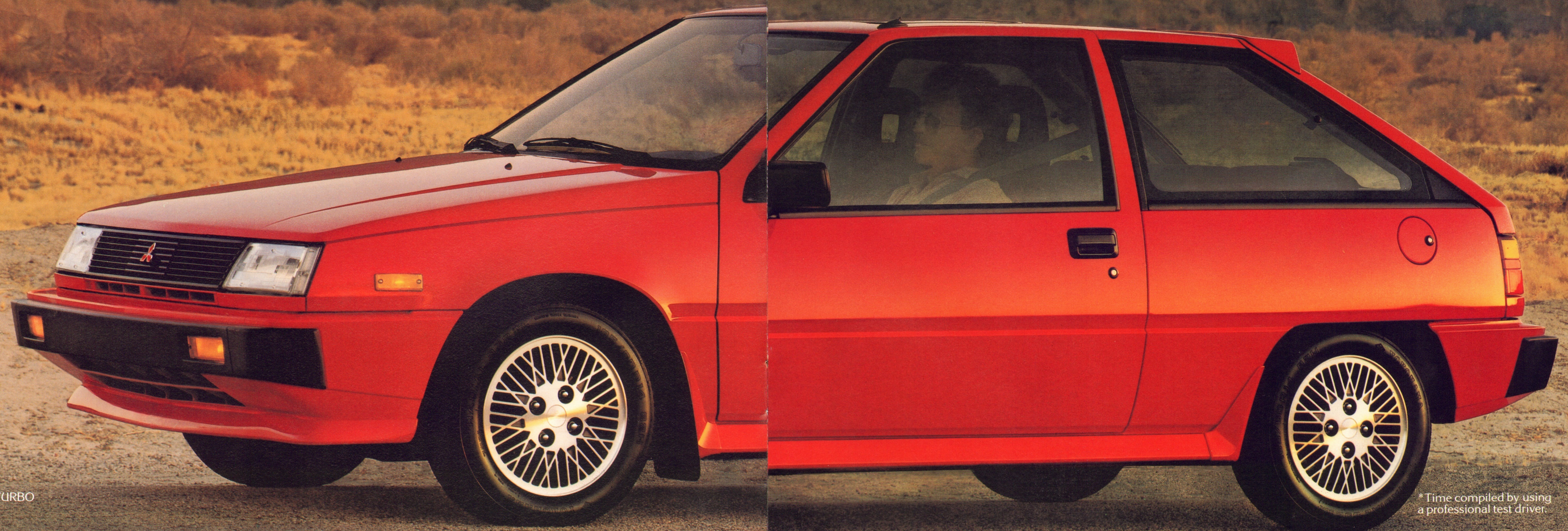
# TURBO POWER JUST FOR THE FUN OF IT

Enthusiasts call it a "Pocket Rocket." A "Box Racer." A "Commuter Scooter." We call it Mirage Turbo, and agree with the enthusiasts.

Here's why: The Mirage Turbo's 105-hp electronically fuel injected/turbocharged 1.6-liter engine is an incredible blend of power and efficiency. Delivering a hefty 122 lbs.-ft of torque the turbomotor pulls the Mirage from 0-50 in 6.2 seconds.\*

The suspension is fully independent, with large diameter stabilizer bars, front and rear, high performance Yokohama 60-series radial tires and vented, power assist front disc brakes. A revision in spring rates for '87 improved an already great ride.

The Mirage Turbo is for having fun. For commuting to work with a smile. For five hours behind the wheel that feel like two. For driving. Just to be driving. For the sheer fun of it.



MIRAGE TURBO

\*Time compiled by using a professional test driver.

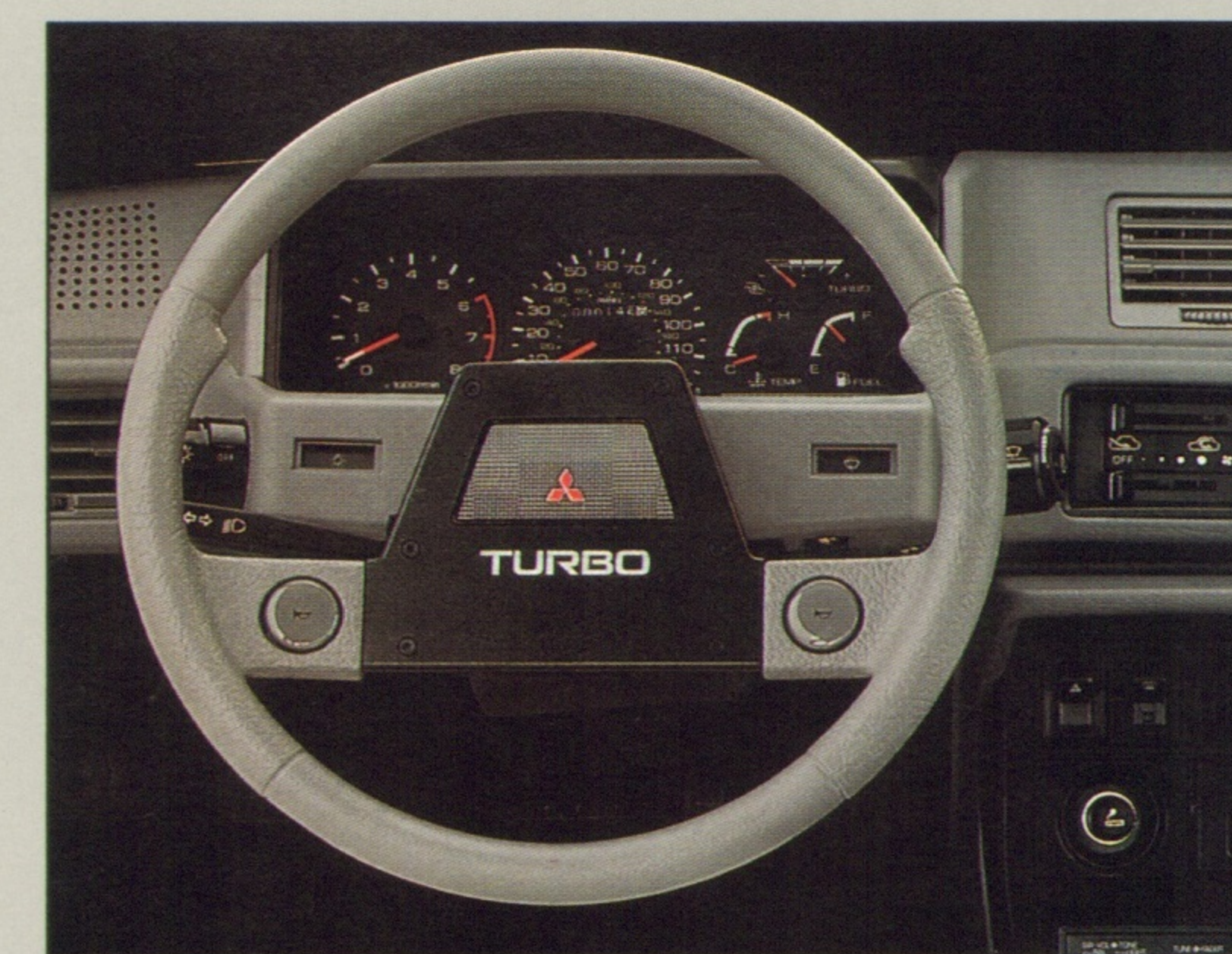


# SPORTY COMFORT FOR THE SERIOUS DRIVER



The interior of Mirage Turbo is designed for the serious driver.

You steer with a special sport steering wheel that has a firm feel, with thumb perches at the 10 and 2 o'clock positions to help keep your grip relaxed.



The full instrumentation, logically laid out and easy to read, includes a boost gauge, an oversize tachometer and the full complement of warning lights.

An adjustable sport bucket seat with firm bolstering at the hip, shoulder, thigh and lumbar area offers reassuring support during spirited driving.

Serious drivers like comfort too.

America's automotive press has called the Mirage Turbo the most-bang-for-the-buck sensation to come along in a long time. They also said:

"The Mirage provides the highest level of all around performance at the lowest price of any car in the last decade. What more can you say?"

... Sports Car Graphic.

Well... how about... "An aerobodied flying wedge with excellent standing start acceleration, great handling and braking, spacious environment and good occupant ergonomics..." Motor Trend.

"Don't tell Mitsubishi it's under-priced." ... Autoweek.

"The very model of a modern sporting motorcar. What with turbo-charger, front-wheel drive and all the aerodynamic devices, the Mirage is small, quick and a bargain." ... Road and Track.

Normally a tough crowd to please, but Road and Track's engineering editor focused on Mirage Turbo's appeal. He developed a formula for rating a vehicle's fun factor. The formula considers lateral acceleration, slalom speed, fuel economy, 0-60 acceleration, braking distance from 80mph and the square root of each vehicle's price.

Up against the likes of the Porsche 911, Ferrari Mondial, Chevrolet Corvette, Nissan 300ZX, Toyota MR2 and Honda Civic-CRX, the Mirage Turbo finished second... to the Swift DB-1 Formula Ford race car. Well, maybe next time.

\* 1985 Mirage Turbo reviewed in the Oct., 1984 issue of Sports Car Graphic, Nov., 1984, issue of Motor Trend, Sept., 17, 1984, issue of Autoweek and Jan., 1985 issue of Road & Track.



# TWO CHOICES FOR COMFORT AND FUN

The foundation for the radical Mirage Turbo can best be understood by taking a long hard look at the standard Mirage and Mirage L 2-door hatchbacks, Mitsubishi's double-dose cure for the econobox blues.

Like the Mirage Turbo, the front-wheel drive Mirage and Mirage L offer a fully independent suspension sys-

tem with MacPherson struts. The L features front and rear stabilizer bars and both offer power assisted disc brakes up front, with coil springs, telescopic shock absorbers, trailing arms and self-adjusting drum brakes in the rear.

Slung low in front and high in the rear, the chassis is designed to effectively isolate road noise and vibration

with specially designed bushings and large rubber insulators between suspension and body.

Both models feature a powerful, and fuel efficient, transverse-mounted 1.5-liter, 4-cylinder engine, with the standard Mirage offering an economical 4-speed manual overdrive transmission and Mirage L and Turbo a close-ratio 5-speed manual overdrive

unit or an optional 3-speed automatic transmission.\*

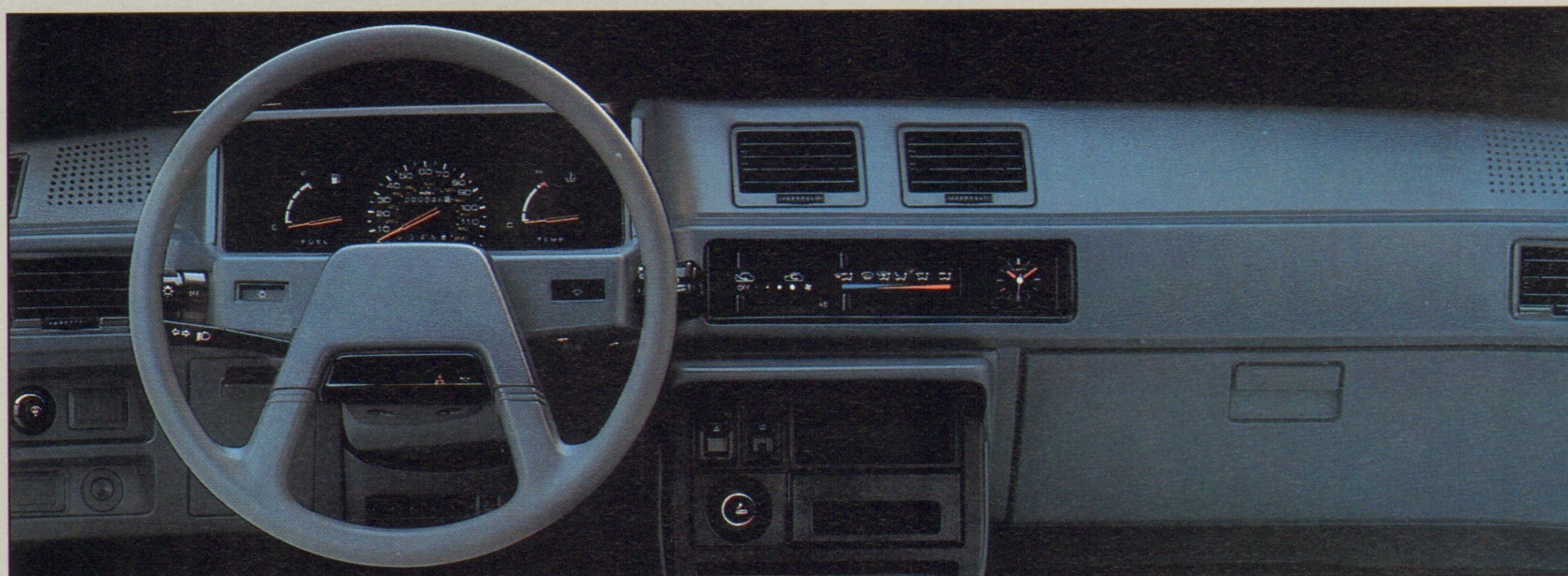
For 1987, Mirage engineers improved engine performance with a new combustion chamber design, improved the exhaust system, redesigned the intake manifold and made the Mirage easier to start. Result: More power, better performance.

\*See EPA mileage figures in specifications section.





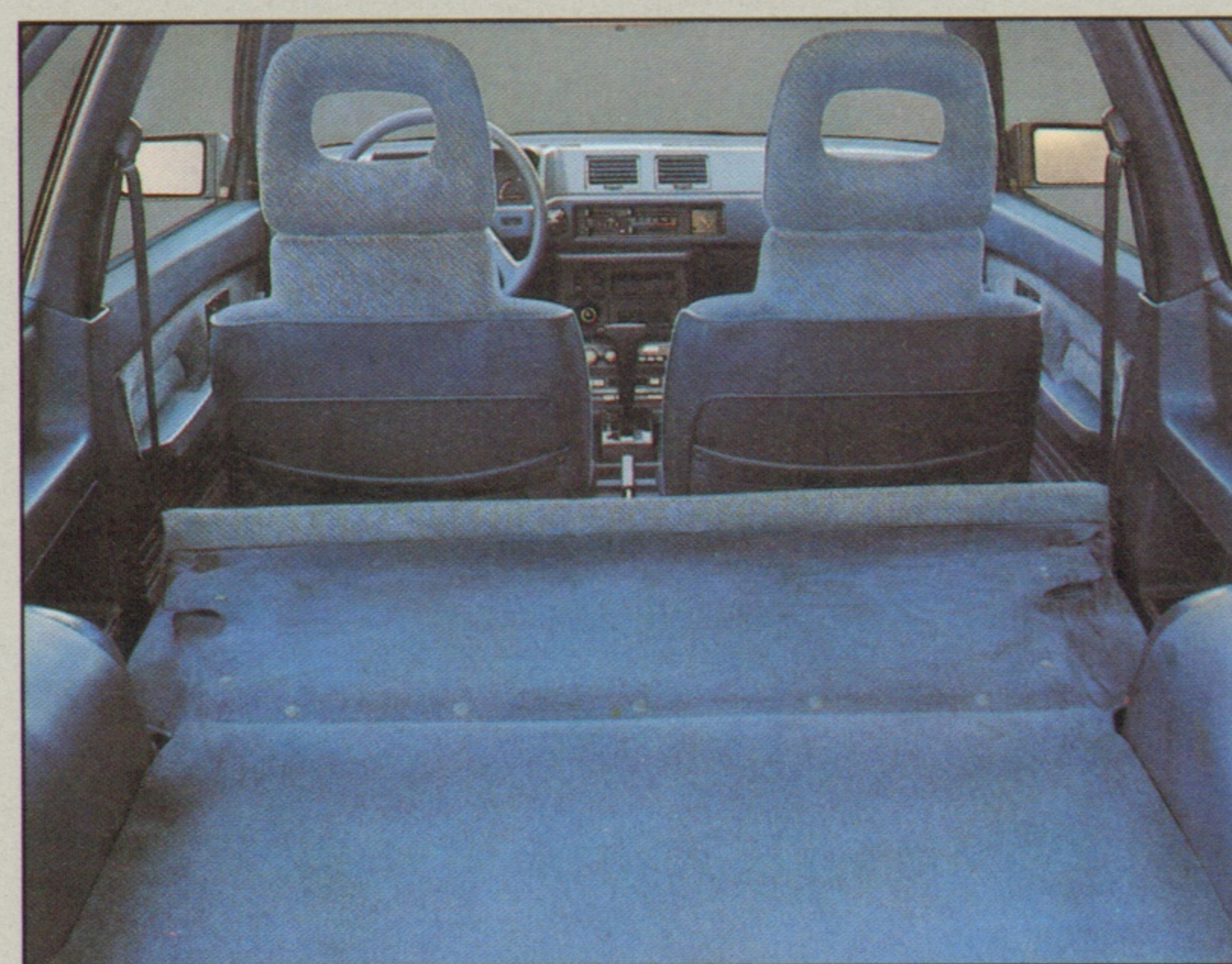
# COMFORT AND CONVENIENCE ARE STANDARD



Comfort and convenience mark both the standard Mirage and Mirage L models.

Each offers no cost features like dual bi-level heating and ventilation with 4-speed fan and side window defoggers.

A generous center console, full carpeting and fully reclining low-back bucket seats are all part of the standard refinements.



Both models provide a fold down rear seat to increase the available cargo area and allow storage of long objects.

The high content Mirage L adds pleasing refinements to the Mirage.

In addition to the standard Mirage features, Mirage L adds:

- Cut pile carpeting, new fabric upholstery and carpeted door panels.
- Map pockets in the door and behind the front seats, for storage of things that seem to clutter.
- Adjustable see-through headrests.
- Dual remote control side view mirrors let different drivers adjust the mirrors for clear vision aft.
- Tinted glass and a rear window defroster are standard.

For your peace of mind, every Mirage model features a limited 5-year, 50,000 mile Anti-Corrosion Perforation Limited Warranty to make sure Mirage keeps its good looks. To protect electronic and computerized components, there's a new 3 year/36,000 mile Electronic Limited Warranty.\*

Quite simply, Mirage and Mirage L offer solid comfort and exceptional performance at reasonable prices. If you take a close look, you'll find that there's a lot of Mirage Turbo in every model we build.

\*For complete details, see copy of Limited Warranty at your Mitsubishi Motors dealership.





# PERFORMANCE AND PERSONALITY... THE SUM OF MANY PARTS

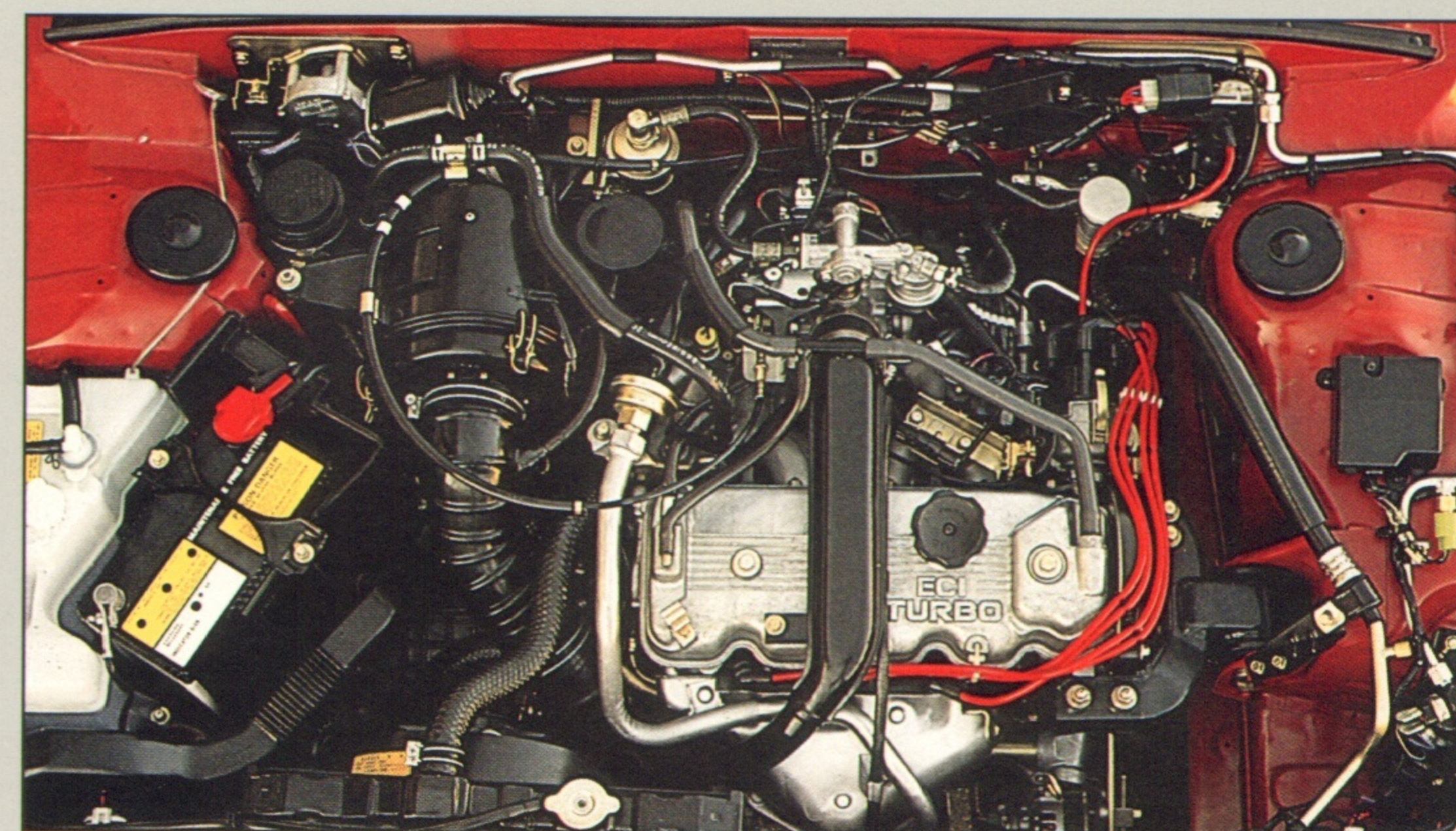
**A MIRAGE TO MEET MOST NEEDS** With the addition of the Mirage 4-Door Sedan to the line up of Mirage, Mirage L and Mirage Turbo, a car buyer now can find a model to fit his or her exact needs.

For fun there's the Mirage Turbo, an exciting driver's car with a long list of comfort and convenience features.

For high content and value there's the Mirage L, jam packed with luxury features including among others; fabric upholstery, handy map pockets, remote control mirrors and rear window defroster.

For value the Mirage is tough to beat with a long list of standard features including tinted glass, dual bi-level heating and ventilation, full carpeting and reclining seats.

And for the family there's the brand new Mirage 4-door.



**THE POWER** Every Mirage is powered by a smooth-running, SOHC 4-cylinder engine, designed with Mitsubishi's third-valve cylinder head for cleaner, more fuel-efficient combustion.\*

The 1.5-liter carbureted engine offered in the standard Mirage, Mirage L and 4-door models features electronic fuel feedback for a more efficient air/fuel burn and more precise emissions control and develops a healthy 68-horsepower and 85 lb.-ft of torque.

The 1.6-liter engine offered in Mirage Turbo features electronic fuel injection and a water-cooled turbocharger, and delivers 105-horsepower and 122 lb.-ft. torque—one of the most powerful engines in its class. When ordered with the optional ELC™ 3-speed automatic transmission, an engine oil cooler is added.

**THE CONVENIENCE** Remote fuel filler door, trunk and hood releases are standard on the Mirage four-door, as is a split fold down rear seat with access to the trunk.

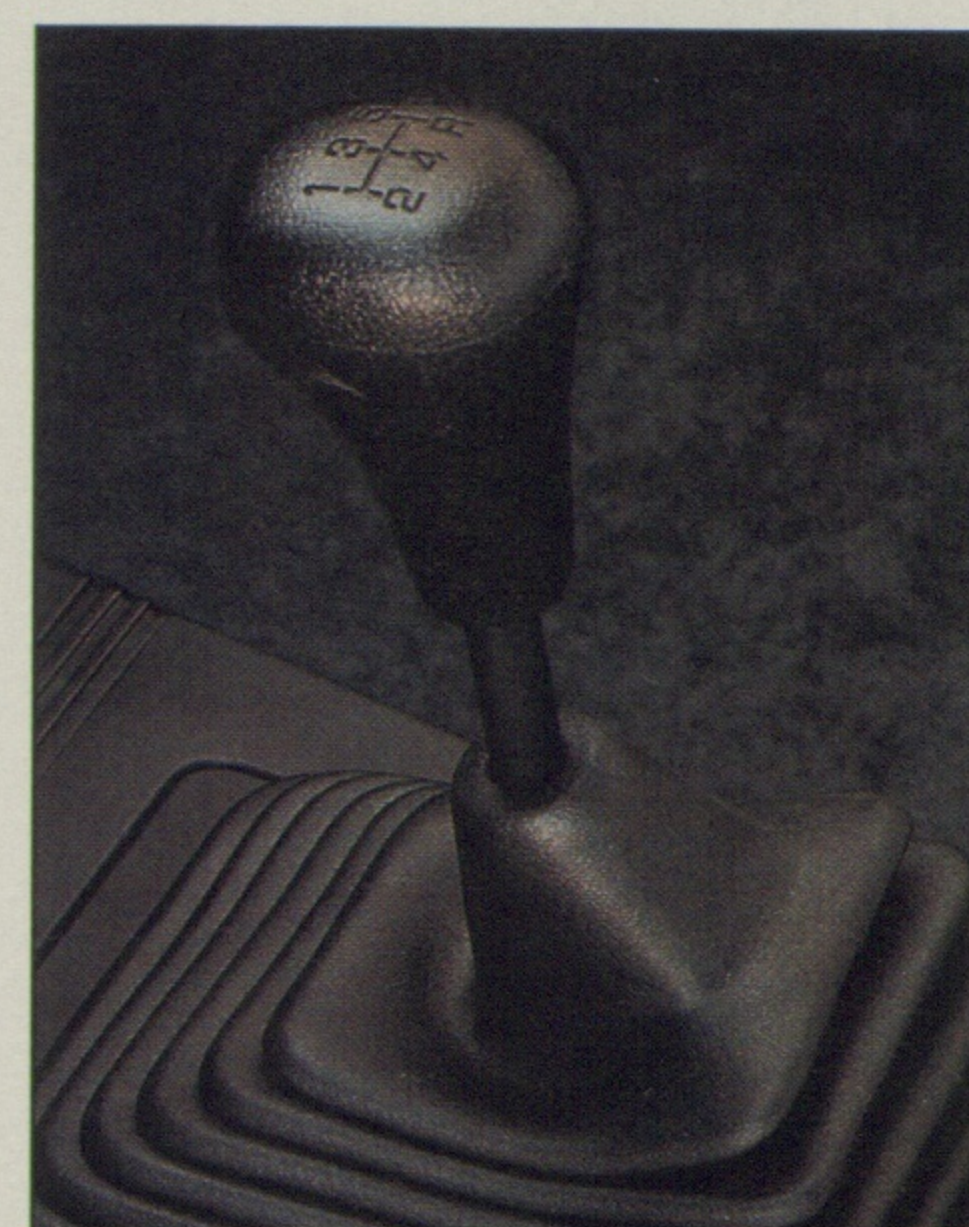


**INFORMATION AT A GLANCE** Analog instruments provide easily read data at a glance. On turbo models, a turbo boost gauge signals when the turbo power kicks in. On non-turbo manual models a "shift" light signals when to shift gears for maximum economy.

**THE CLIMATE** Air conditioning, specially designed to fit Mirage's instrument panel neatly is available on all Mirage models. Dual bi-level heating/ventilation is standard.

**THE CONTROL** Handling the power in the Mirage Turbo, Mirage 4-door and Mirage L series is a close-ratio, short-throw, 5-speed manual overdrive transmission, with the ELC™ 3-speed automatic offered as an option.

The 5-speed manual overdrive transmission has revised gear ratios for 1987. Now, both fourth and fifth gears are "overdrives"... that means that the output shaft is turning faster than the engine output shaft. On the highway, the engine works less hard. The result is less wear on the engine and terrific economy.\*

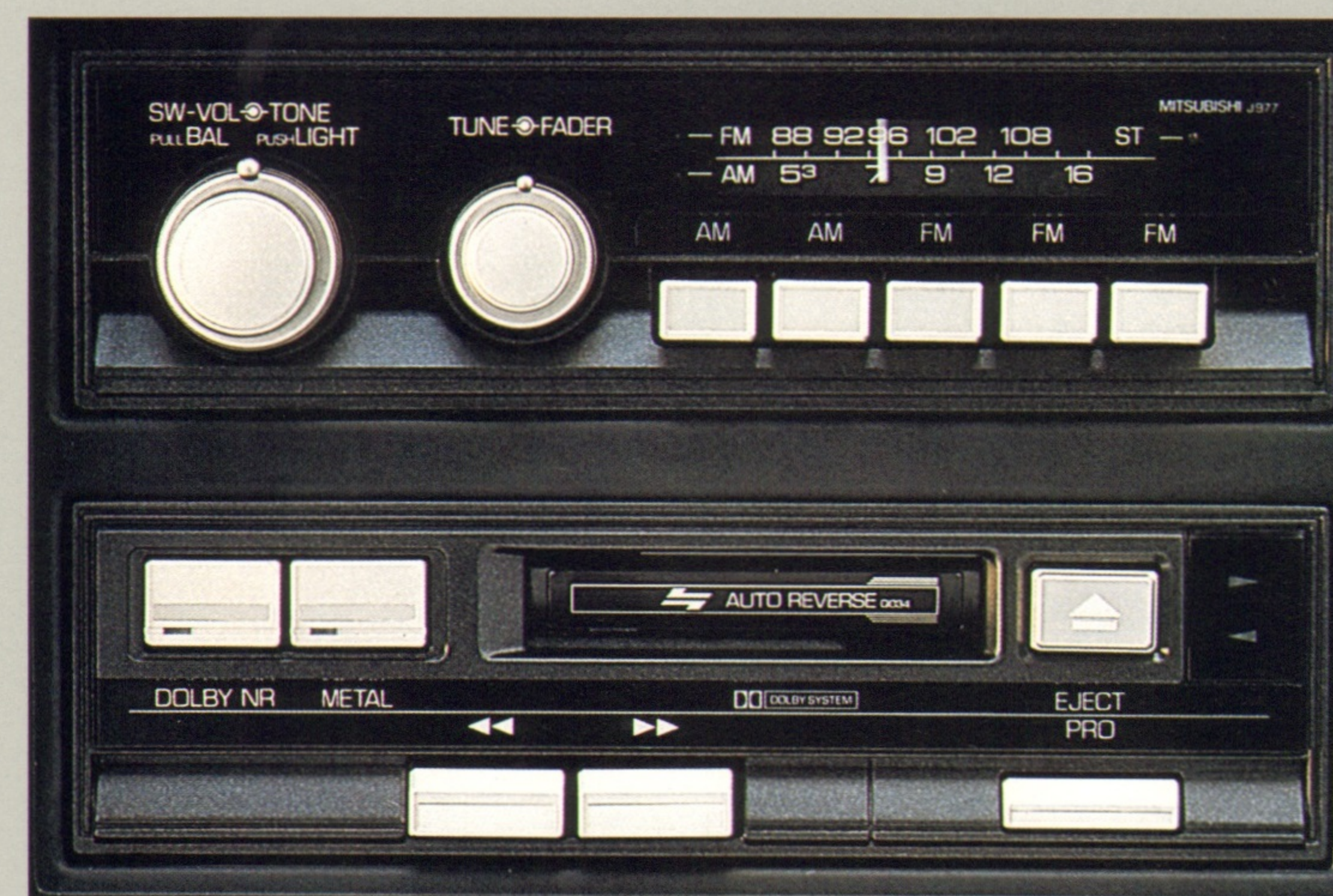


The three speed automatic features an electronic lockup control to minimize slippage and maximize fuel economy. In fact, the Mirage with ELC™ has been shown to improve mileage by as much as 10% over a similar vehicle without this feature.\*

The secret of its efficiency is a computer that senses engine speed, kickdown drum speed, output shaft speed, throttle position and water temperature, to determine whether or not the lock up torque converter should be activated.

\*See EPA mileage figures in specifications section.

**MIRAGE TURBO BRAKES** The Mirage Turbo features vented front disc brakes for additional stopping power. The ventilated design allows cooling air to pass through the discs, helping reduce heat build-up which minimizes brake fade.



**A PLEASANT SOUND** Mirage models offer two optional radios. The base radio is a AM/FM stereo with four speakers (not available on Turbo).

An upgraded system, which includes a cassette player, is available on all models except the standard Mirage model.

**THE DIRECTION** Steering on all Mirage models is rack and pinion, with speed variable, power assist available on the Turbo model with automatic transmission.

**SPORTY ACCESSORIES** You can give your Mirage a sportier look with two functional accessories that help protect the car. A low profile shade kit is designed to fit to the rear window and protect against sunlight damage to interior fabrics and help keep the interior cool. And to help protect against stones, bugs and road debris, your dealer offers a durable, cotton-backed nose mask to fit all Mirage models.

**THE SEAT** Mirage front seats are form fitting buckets that give excellent support and fully recline for comfort. In the Mirage L and Turbo models, a walk-in passenger seat release slides the seat, and folds the seatback forward, in a one-touch motion allowing passengers easy access to the back.



For sun lovers there is an optional power operated sun roof with integral sun screen available only on Mirage L and Turbo models.



**THE SHAPE** All Mirage models offer aerodynamic, form-follows-function styling with exceptional exterior air management for a low coefficient of drag to increase engine efficiency and reduce interior noise. Mirage Turbo offers additional stability and control with extended front air dam, side sills and roof-mounted spoiler.

**THE VIEW** Flip-out rear quarter windows on all hatchback models add to Mirage's already excellent interior ventilation. Side window defoggers are standard on all Mirage models, with electric rear window defroster standard on all but the standard Mirage, and a rear window washer/wiper optional on Turbo and L models.

**THE RIDE** All Mirage suspensions are fully independent strut/trailing arm systems with front stabilizer bar, front disc brakes and steel belted radial tires.

The Mirage Turbo features 0.63-in. stabilizer bars front and rear, high performance speed-rated 60-series tires, gas-charged shock absorbers, stiffer spring rates and vented front disc brakes... all of which contribute to Mirage Turbo's compliant ride and outstanding handling.

With Mirage, Mirage L, Mirage 4-Door and Mirage Turbo to choose from, it's easy to select the one that fits your style and personality.

The trademark Mirage is used with the consent of Grand Touring Cars, Inc., Scottsdale, Arizona.



# 1987 MIRAGE FEATURES AND SPECIFICATIONS

## Features & Options

MECHANICAL/FUNCTIONAL	MIRAGE	MIRAGE L	TURBO	4-Dr.
Styled steel wheels w/hub cap	S			
Styled steel wheels w/full wheel cover		S		S
Styled wheels w/hubcap & trim rings			S	
14" Alloy wheels			O	
P145/80R13 Radials, BSW	S			
P155/80R13 All Season radials		S		S
185/60HR14 Performance radials			S	
Power assist front disc brakes	S	S		S
Power assist ventilated front disc brakes			S	
4-wheel independent suspension	S	S	S	S
Performance tuned suspension			S	
Water cooled turbine bearing housing			S	
Engine oil cooler (w/auto trans. only)			S	
Maintenance free battery	S	S	S	S
Rack & pinion steering	S	S	S	S
Power assist steering (†w/with auto trans.)			O†	
5-year/50,000 mile Anti-Corrosion Perforation Limited Warranty*	S	S	S	S
3-year/36,000 mile Electronics Limited Warranty*	S	S	S	S
2-year/24,000 Powertrain Limited Warranty*	S	S	S	S
EXTERIOR				
Black grille	S		S	
Bright grille		S		S
Color-keyed f/r bumpers w/black nerf pad	S	S	S	S
Color-keyed side sill ext/fr. air dam			S	
Halogen headlamps	S	S	S	S
Retractable radio antenna	O	O	O	O
Dual remote control mirrors		S	S	S
Front mudguards	S	S	S	S
Convex right side mirror		S	S	S
Wide bodyside molding		S		S
Color-keyed roof spoiler			S	
Rear window wiper/washer		O	O	
Locking fuel filler door	S	S	S	S
Remote fuel filler door and trunk release				S
Bright tailpipe ext.			S	
INTERIOR				
Tinted glass		S	S	S
2-speed wiper/washer	S	S	S	S
Variable intermittent wiper			S	
Day/night mirror		S	S	S
Power sunroof			O	
AM/FM stereo radio w/4 speakers	O	O		O
AM/FM stereo radio + cassette w/4 speakers		O	O	O

S-Standard O-Optional

	MIRAGE	MIRAGE L	TURBO	4-Dr.
Tachometer			S	
Tripmeter	S	S	S	S
Coolant temperature gauge	S	S	S	S
"Shift" light (manual trans. only)	S	S		S
Turbo boost gauge			S	
Analog quartz clock		S	S	S
Dual bi-level heat/vent system w/4-speed fan	S	S	S	S
Air conditioning	O	O	O	O
Deluxe steering wheel	S	S		S
Sport steering wheel			S	
Needle punch carpeting	S			
Cut pile carpeting		S	S	S
Vinyl upholstery	S			
Full face cloth upholstery		S	S	S
Door map pockets (driver's & pass. side)		S	S	S
Carpeted lower door trim		S	S	S
Sport seat w/see-through adj. headrests		S	S	S
Walk-in passenger seat release		S	S	
Full console	S	S	S	S
Fold down rear seat (‡ split fold down)	S	S	S‡	S‡
Rear cargo cover	O	S	S	
Rear window defroster	O	S	S	S
Front assist grip	S	S	S	S
Rear assist grip		S	S	S
F/R ashtray	S	S	S	S
Dome light	S	S	S	S
Trunk light				S
Rear shelf	O	S	S	S
Cargo/trunk carpet	S	S	S	S
Visor vanity mirror				S
Drivers dead pedal			S	
EXTERIOR COLORS/INTERIOR TRIM				
Rocky White/Dark Blue	S	S	S	S
Mojave Beige/Brown	S	S		S
California Red/Gray	S	S	S	
Baltic Blue/Dark Blue	S	S		S
Selbia Black/Gray		S	S	S
Palermo Gray/Gray			S	
Dakota Sand/Brown		S		S
ACCESSORIES				
Nose mask	O	O	O	O
Shade kit	O	O	O	O
Mudguards	O	O	O	O
Stripe kit	O	O	O	
Floor mats	O	O	O	O
Ski rack	O	O	O	O

## Specifications

ENGINES	1.5 LITER	1.6 LITER TURBO
Model description	G15B	G23B (w/Turbo)
Applications	Mirage, Mirage L, 4-door	Mirage Turbo
No. cylinders, layout	4-cylinder, inline	4-cylinder, inline
Bore x stroke, (mm/in.)	75.5 x 82.0/2.97 x 3.23	76.9 x 86.0/3.03 x 3.39
Displacement (cc/cu.in.)	1468/89.6	1597/97.5
Compression ratio	9.4:1	7.6:1
Fuel system	1-2V	Elec. fuel injection
Horsepower	68 @ 5500	105 @ 5500
Torque	85 @ 3500	122 @ 3500
CLUTCH		
Clutch type: Single-plate, dry; dia., in.	7.87 (1.5/4M, 1.6/5M), 7.24 (1.5/5M)	
TRANSMISSION	4-SPEED MAN.	5-SPEED MAN. 3-SPEED AUTO.
Applications	Mirage	L, 4-Door, Turbo Non-Turbo
Gearbox Ratios (:1)		
1st	3.363	3.363 2.551 2.846
2nd	1.947	1.947 1.448 1.581
3rd	1.285	1.285 1.000 1.000
4th	0.939	0.939 — —
5th	—	0.777 — —
Reverse	3.083	3.083 2.176 2.176
Final drive ratio (:1)		
1.5 engine	3.150	3.666 — 3.166
1.6T	—	3.666 3.166 —
SUSPENSION		
Front	Independent with struts, coil springs, 0.55 inch stabilizer bar (0.63 inch for Turbo)	
Rear	Independent with trailing arms, coil springs, telescopic shocks, 0.63 inch stabilizer bar (all except base Mirage)	
DIMENSIONS-in.	2-DOOR	4-DOOR
Wheelbase	93.7	93.7
Overall Length	157.3	169.1
Width (with side molding)	63.8 (64.4)	64.4
Height	53.5	53.5
Track (F/R)	55.5/52.8	55.5/52.8
Headroom (F/R)	37.7/36.7	37.7/37.7
Headroom (F/R) (w/sunroof)	35.9/35.8	N/A
Shoulder room (F/R)	52.8/54.3	52.8/52.6
Legroom (F/R)	40.6/30.7	40.6/30.7
Hiproom (F/R)	53.5/39.1	53.5/41.2
Cargo capacity (EPA Index)	11.7	10.9
Coefficient of drag	0.39	0.38
STEERING	MANUAL	POWER
Type	Rack & Pinion	Rack & Pinion
Overall ratio, non-turbo/turbo	21.6/20.3	15.2
Turns, lock to lock, non-turbo/turbo	4.2/3.7	N/A/2.8
Turning circle, curb to curb, non-turbo/turbo	30.2/32.5	N/A/32.5

\*For complete details see copy of Limited Warranty at your dealer.

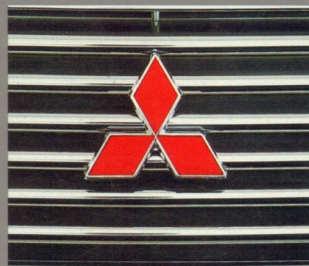
BRAKES		
Type, front: non-turbo/turbo	Solid disc/ventilated disc	
Power Assist	Standard	
Disc diameter x width, in: Mirage, L/Turbo	9.5 x 0.51/9.4 x 0.71	
Type, rear: all models:	Self-adjusting drum	
Drum Diameter x width, in: all models:	7.1 x 1.56	
Total B.S.A., Sq. in., Mirage, L/Turbo	232/238	
ELECTRICAL SYSTEM		
Battery	45 amp hour, 12-V maintenance free	
Ignition system	Electronic	
Alternator rating (Amps)		
Mirage & Mirage L, w/man. trans.	60	
Mirage L w/auto transmission	65	
Mirage Turbo	65	
FUEL SYSTEM		
Type fuel required	Unleaded	
Fuel pump type:	1.5—mechanical 1.6-T—electric	
Fuel tank capacity, U.S. gallon	11.9	
WHEELS & TIRES		
Wheel Size:		
Mirage	13 x 4.5J	
Mirage L, 4-Door	13 x 5.0J	
Turbo	14 x 5.5JJ	
Tire Size		
Mirage	P145/80R13	
Mirage L (2 & 4 Door)	P155/80R13	
Mirage T	185/60HR14	
Curb Weight—lbs.		
Mirage w/4M	1984	
Mirage L 5M/3A	2018/2062	
Mirage L (4-door) 5M/3A	2095/2139	
Turbo 5M/3A	2172/2205	
FUEL ECONOMY FIGURES**		
Model	Eng./Transmission	Est. City/Highway
Mirage	1.5/4M	34 38
Mirage	1.5/5M	32 37
Mirage	1.5/3A	29 33
Mirage 4-Door	1.5/5M	32 37
Mirage T	1.6/5M	25 31
Mirage T	1.6/3A	24 26

\*\*These figures are estimates only, provided by the U.S. Environmental Protection Agency (EPA). Technical data, features, options and other equipment shown in this catalog are based on the latest available information at the time of printing and are subject to change without notice. Some vehicles are shown with optional equipment. For further information on the additional options and accessories, contact your Mitsubishi Motors Dealer. Availability at dealers of vehicles with specific features may vary. Headlights, parking lights and fog lights on vehicles lighted for illustration purposes only. Call 1-800-447-4700 for your nearest Mitsubishi Motors Dealer.

Part #MMSA-ADV-5024. Litho in U.S.A. © 1986 Mitsubishi Motor Sales of America, Inc.



**THE MITSUBISHI HERITAGE** Seventy years of innovative engineering and technology have gone into the design of Mitsubishi cars and trucks.



As one of the largest vehicle makers in the world,

Mitsubishi Motors annually builds over a million vehicles for customers in 135 countries around the globe.

Wearing the three diamond trademark are more than 100 diversified companies ranging from heavy industry, electric, shipping, banking and aircraft to chemicals and cameras.

It's this combination of wide ranging technology—aerodynamics, electronics, turbo engines and metallurgy—incorporated in its cars and trucks that has earned Mitsubishi Motors a world-wide reputation for reliability, performance and comfort.



PERFECTING THE EXPERIENCE.

