

# 1988 Trucks



M I T S U B I S H I



# M I T S U B I S H I



## Mitsubishi Motors...Our Experience Shows.

In the last seventy years, Mitsubishi Motors Corporation has become one of the world's largest manufacturers of cars and trucks, producing over 1.2 million vehicles last year alone.

In 1988, the quality vehicles that carry the Mitsubishi name are the result of years of experience, research and technological refinement. All combined to provide you with a vehicle that is not only reliable, stylish and efficient, but one that truly performs.

### There's Always a Better Way.

Mitsubishi has long been recognized throughout the industry for its leadership in engineering advancements that improve and enhance the performance and durability of its vehicles. Some of its many achievements include aerodynamic flush body styling for improved efficiency

and patented Dual Engine Stabilizers™, an internal counter-balancing system used in most of its 4-cylinder powerplants to neutralize inherent vibrations for quieter, smoother engine operation.

When it comes to building tough, rugged trucks, Mitsubishi is a world-wide leader. In the area of 4WD vehicles, the use of skid plates at vital points, a tough six-crossmember ladder frame and independent front suspension with double A-arms sprung by torsion bars ensure controlled, compliant performance on the highway, as well as off-road. The carefully designed shift-on-the-fly 2-speed transfer case and automatic locking front hubs make shifting from 2WD to 4WD a breeze.

Mitsubishi 2WD trucks incorporate the latest technology as well, including close attention to aerodynamic styling

for greater efficiency, a fully independent front suspension to provide accurate cornering and a smooth ride, and a strong, welded, double-wall cargo box.

Mitsubishi is continuing its commitment to the research and development of components, integrated control systems and aerodynamic exterior and ergonomic interior design to develop cars, trucks and sport utility vehicles to meet the needs of the future.

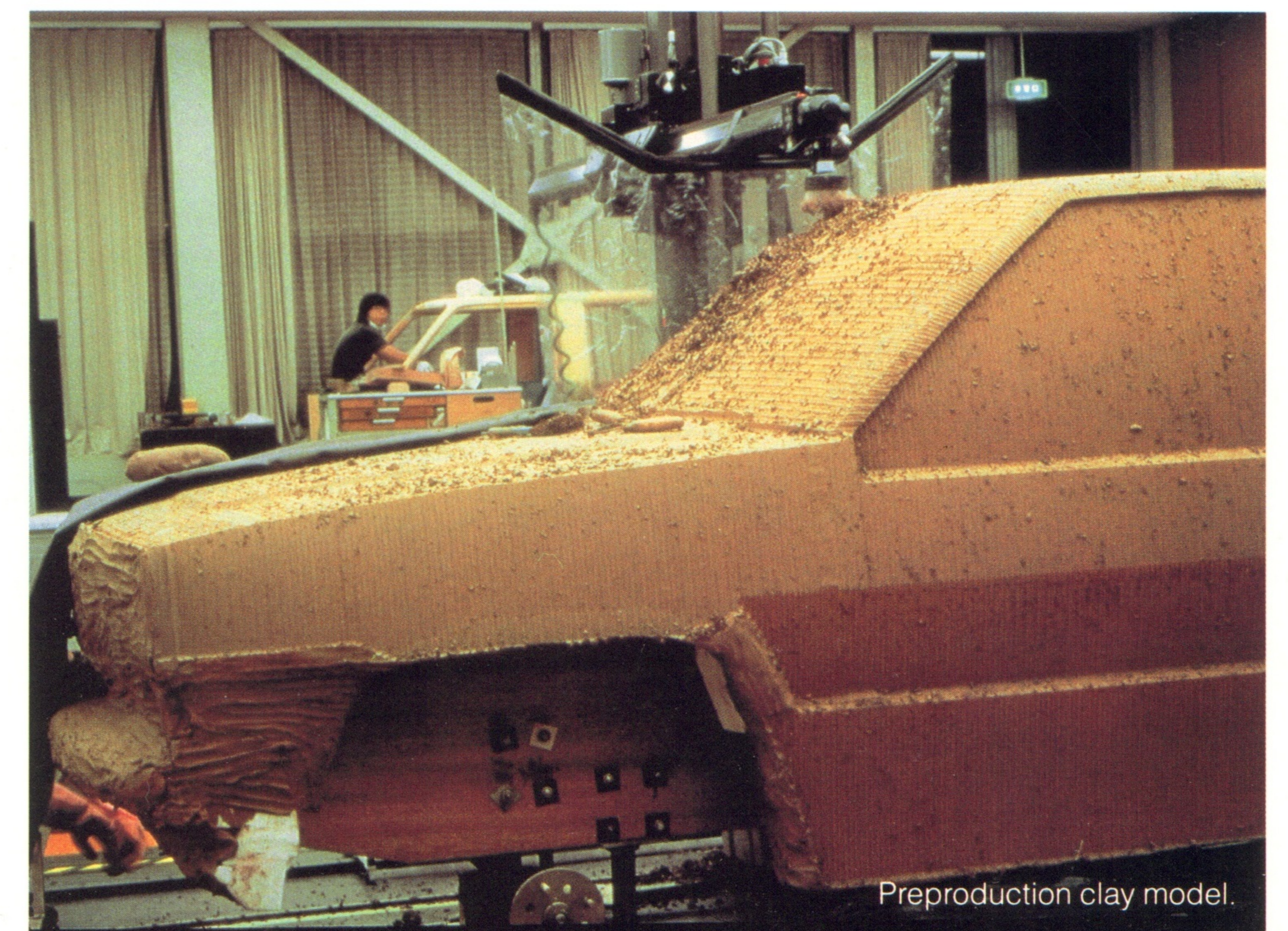
### Mitsubishi 2WD and 4WD Trucks.

For 1988 Mitsubishi offers a complete line of trucks for you to choose from. Take your choice of a 2WD or 4WD model with two spacious cab styles, two bed lengths and three trim levels. All are designed to give you the power and performance you need, whether you're at work or at play.

This year, Mitsubishi adds three Macrocab models to its line of tough trucks. Each offers you the same quality features and stylish design found on all Mitsubishi trucks, but with a little more cabin room for those who want the extra space.

Whichever Mitsubishi truck you choose, you can count on a handsome, yet rugged exterior, a truly comfortable and well-appointed interior and all the performance you could possibly want in a well-designed pickup.

Take a few minutes to fully review the many features offered in Mitsubishi trucks. If you're looking for a tough, dependable truck that gives you a great deal of pleasure whether you're doing business or just doing the town, you'll see why Mitsubishi is the obvious choice.



Preproduction clay model.



# 4 - W H E E L D R I V E S P X & S P X M A C R O C A B



## SPX 4WD. Go Your Own Way.

Take the high road, the low road or no road at all with the 1988 SPX 4WD, the most versatile, most luxurious vehicle in Mitsubishi's truck line-up. Choose between the new SPX MacroCab with its

added roomy interior, or the SPX regular cab. Both offer the versatility and toughness you want in a rugged truck, plus the comfort of a car.

With a high, wide body stance, its smooth body contours, flush seams and

sweptback windshield, the SPX exterior design offers a unique blend of aerodynamic efficiency and aggressive good looks. The flared fenders, bright bumper, grille and trim, wide body-side

molding and spoker wheels (or optional aluminum alloy wheels) with large P225/75R15 all-terrain radial tires tell you at a glance that the SPX is one truck that takes its fun seriously.





## Now There's Room for More.

Once inside the spacious new SPX Macrocab, you'll almost forget you're sitting in a rugged 4WD vehicle. The reclining lowback sport bucket seats feature adjustable headrests, and exceptional hip, shoulder and lumbar support. And there's plenty of seat travel to accommodate long-legged passengers. There's also ample head and shoulder room to make hours behind the wheel less strenuous.

The interior of the SPX Macrocab is impressively appointed. The lush cloth upholstery is as durable as it is attrac-

tive. Cut-pile carpeting throughout and insulated cloth headliner help isolate the cabin from road and wind noise. The easy-read instrument panel is straight forward and functional, putting controls at your fingertips and gauges where they can be checked at a glance. To monitor vital functions, there's full instrumentation including a tachometer, oil pressure gauge, voltmeter and temperature gauge.

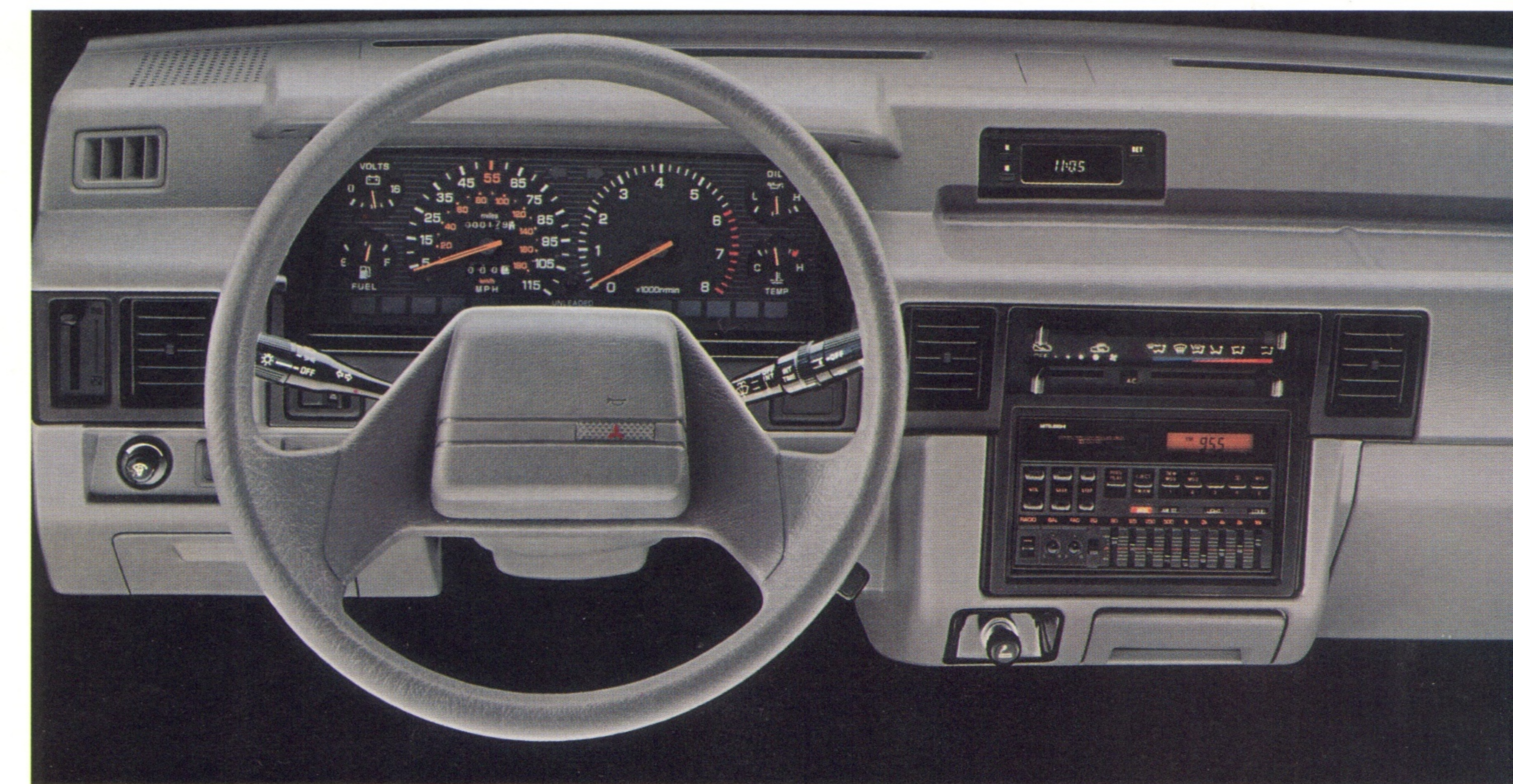
The sport steering wheel with adjustable height column lets you choose the most comfortable driving position. Power

assist steering adds to the ease of handling. And within easy reach are controls for the dual bi-level heating/ventilation system and optional variable intermittent wipers.

You also have the option to add air conditioning, an electronically tuned AM/FM stereo cassette or an electronically tuned AM stereo/FM stereo cassette with graphic equalizer, both with four speakers.

## There's More Room In Store.

One thing the SPX Macrocab has plenty of is storage space. Up front there's a large center console with storage space and cup holders and a roomy, lockable glove box. At the side are convenient door map pockets. Below the seats are small pockets for your sun glasses or other small items. And behind the seats, room and then some. On the transom wall are twin pockets with bag straps, on the floor a parcel strap to secure precious cargo, and under the floor a hidden compartment to hide away valuable items.







## Mighty Max. Fun for the Money.

Mighty Max 4X4s are practical machines, but never boring. Shift the transfer case into 4WD and you'll awaken an off-road animal.

Underneath is a widely heralded independent front suspension that features stout double A-arms and resilient torsion bars. These components are precisely tuned to provide exceptional impact

isolation off-road, and a smooth, quiet and controlled highway ride. Three separate skid plates help protect vital undercarriage components and all three are standard equipment.

A rugged part-time four-wheel drive system backs up a short-throw, close ratio 5-speed manual overdrive transmission with a shift-on-the-fly 2-speed

transfer case and automatic locking hubs. It's part of a driveline designed to achieve a perfect balance of reliability and performance.

More good news: It all comes at an affordable price. Always among the lowest priced 4X4s in its class, Mighty Max was called "one of the best kept secrets in four-wheel drive" by *FOUR*

*WHEELER* Magazine, when they named it the "Best Buy" among all compact four-wheel drive pickups for 1987.

The Mighty Max 4WD Shortbed features styled steel wheels, wraparound front bumper, large flared fenders and dual black patch mirrors. Or choose the dressier Mighty Max Sport 4WD Longbed with

its bright trim, chrome front and rear bumpers, dual sport mirrors, bodyside molding and spoker wheels. (Aluminum alloy wheels are optional.) Both Mighty Max and Mighty Max Sport feature large P225/75R15 all-terrain radial tires.

Mighty Max. ...practicality at its most enjoyable.



## Inventive Suspension Techniques.

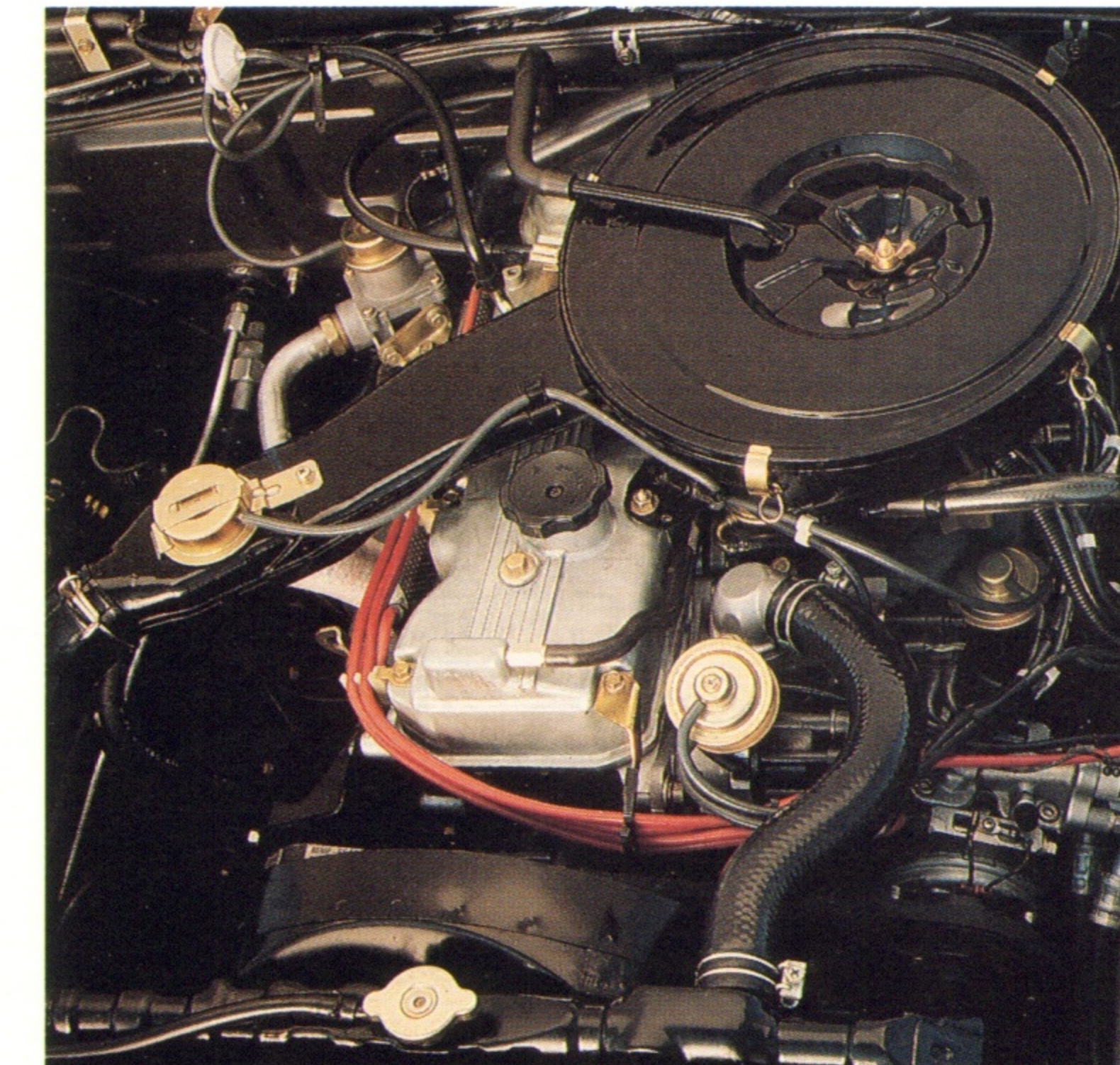
Not all suspensions are created equal, and Mitsubishi offers an uncommonly agreeable combination of off-road capabilities and on-road manners.

A tough, yet flexible independent front suspension provides optimum compliance and control in tough terrain. It's achieved with carefully tuned torsion bars that provide long vertical wheel travel, plus a 0.79-inch stabilizer bar that makes Mitsubishi 4X4s track true and corner with precision, on road and off. The rear end is suspended by leaf springs and bias-mounted shocks to help maintain proper control. It's fully capable of bearing a payload in excess of three-quarters of a ton.



With 6.9 inches minimum running ground clearance (7.3 inches on SPX Macrocab) and three skid plates protecting the transfer case, front axle and gas tank, Mitsubishi 4X4s come off-road ready with standard equipment dress.

Every Mitsubishi 4X4 has at its heart a proven part-time four-wheel drive system. The two-speed transfer case offers a 1.94:1 low range gear for easier low-speed crawling over rough terrain. Power-assisted steering takes the effort out of maneuvering, whether you're driving around boulders or sliding into a tight parking space around town.



### Performance Plus.

Power? All of our 4X4s come with a 2.6-liter, single overhead cam four-cylinder powerplant that reels out 109 horsepower and 142 pound-feet of torque. It's the largest inline 4-cylinder engine built, and one of the smoothest, due to patented Dual Engine Stabilizers™ that effectively counterbalance and neutralize engine vibration. Maintenance is kept to a minimum by use of automatic valve lash adjusters and an electronic ignition system.

It's a gutsy engine, mated to a durable slick-shifting, 5-speed overdrive gearbox. Combined with 3.909:1 differential gears, the gearbox is set up to provide ample torque off the line and a long, easy stride for up to 23 mpg on the highway.\*

### Solid from the Ground Up.

A six-crossmember ladder frame is designed to resist flex and absorb the stresses of hard driving over the long haul, year after year.

Big 10.8-inch, power assist vented disc brakes are mounted up front, providing excellent feel and solid stopping power. Self-adjusting rear brakes are tied into a load-sensing device that automatically adjusts braking influence according to the weight of the load in the bed, so braking remains predictable under all conditions.

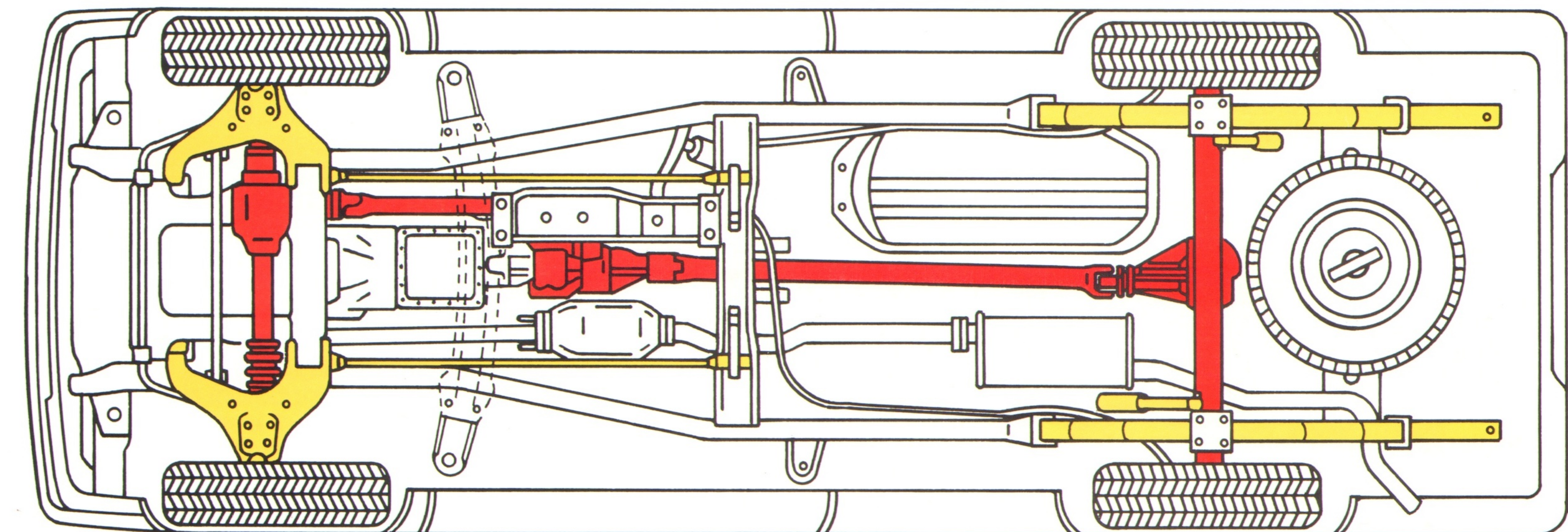


Rugged engineering, special features and a reasonable price can be hard to find in one package. But Mitsubishi 4X4s have all three. And, in every truck, value is standard equipment.

### Make Your Move.

Convenient automatic locking hubs allow shifting into, or out of, four-wheel drive without ever stepping outside. To disengage 4WD, simply come to a stop, shift into 2WD, back up 3 feet and you're on your way again.

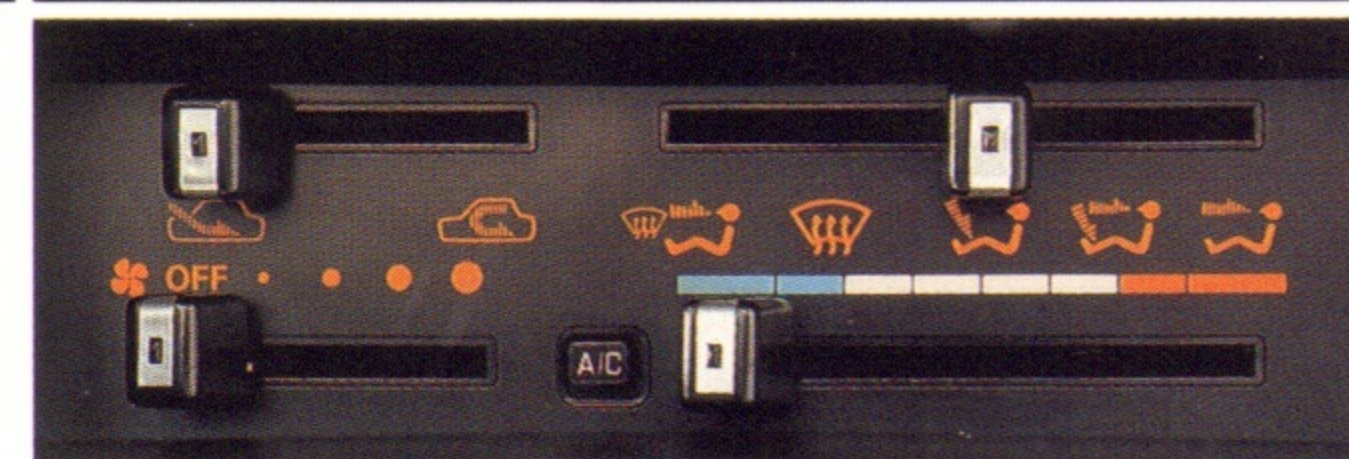
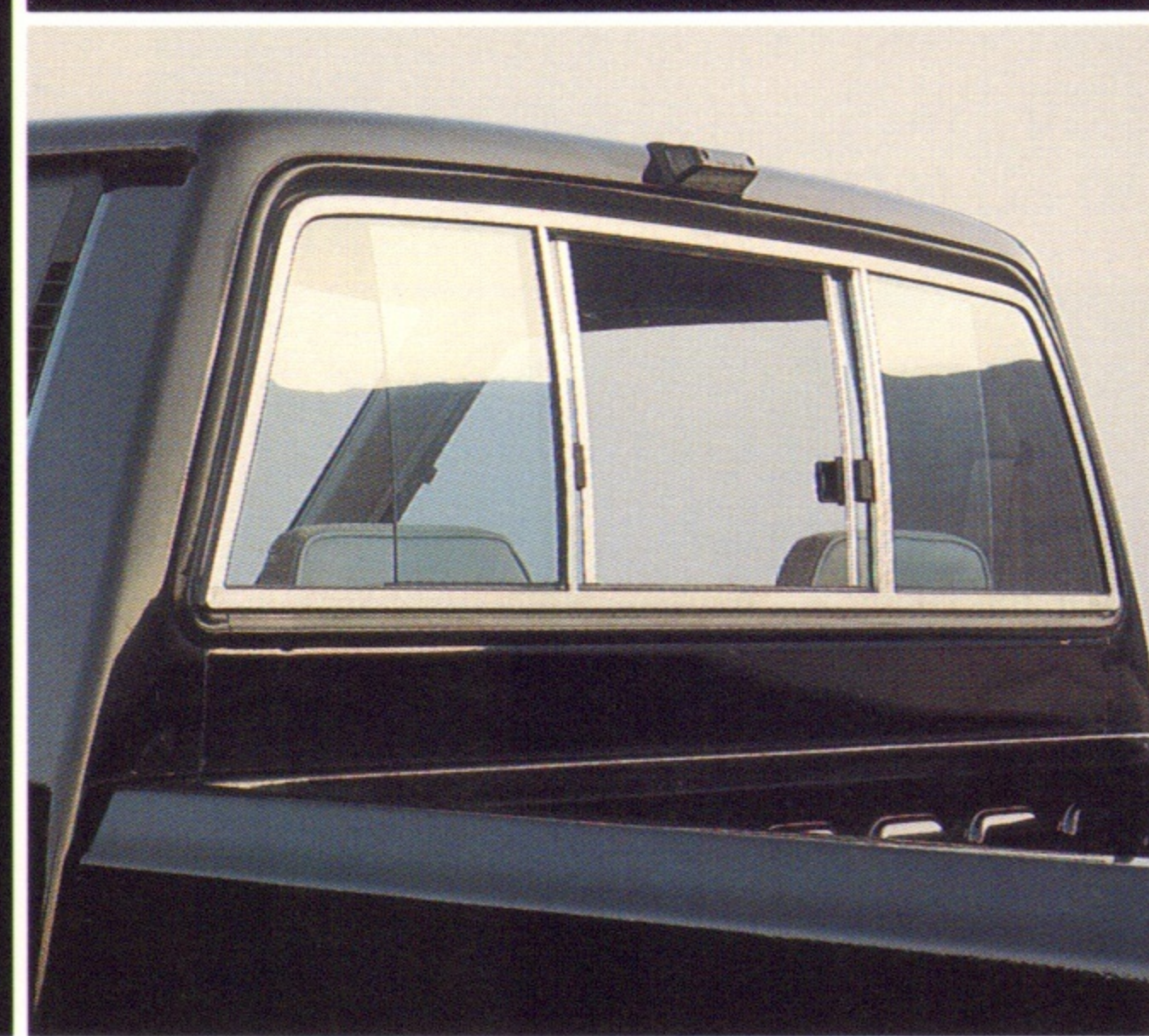
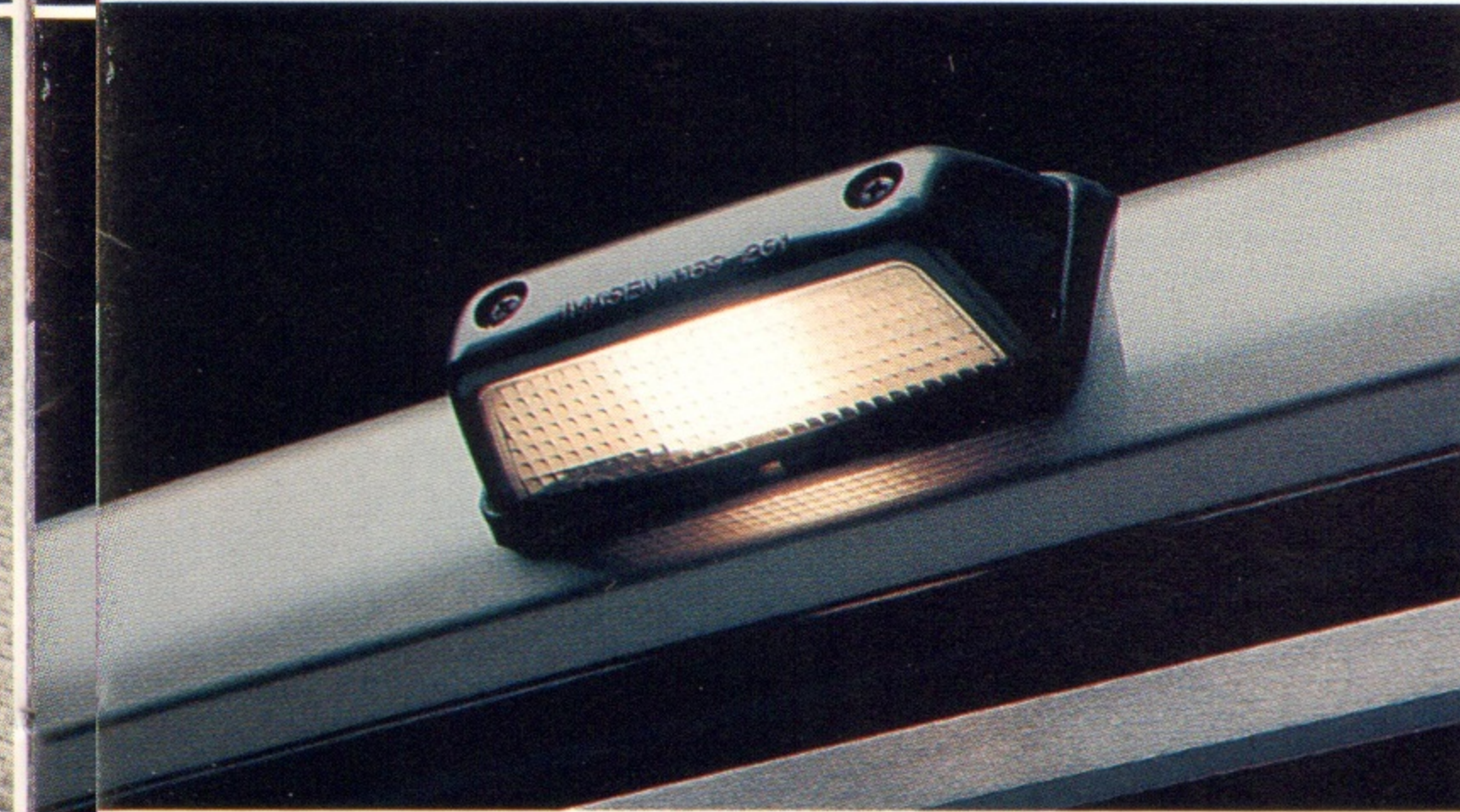
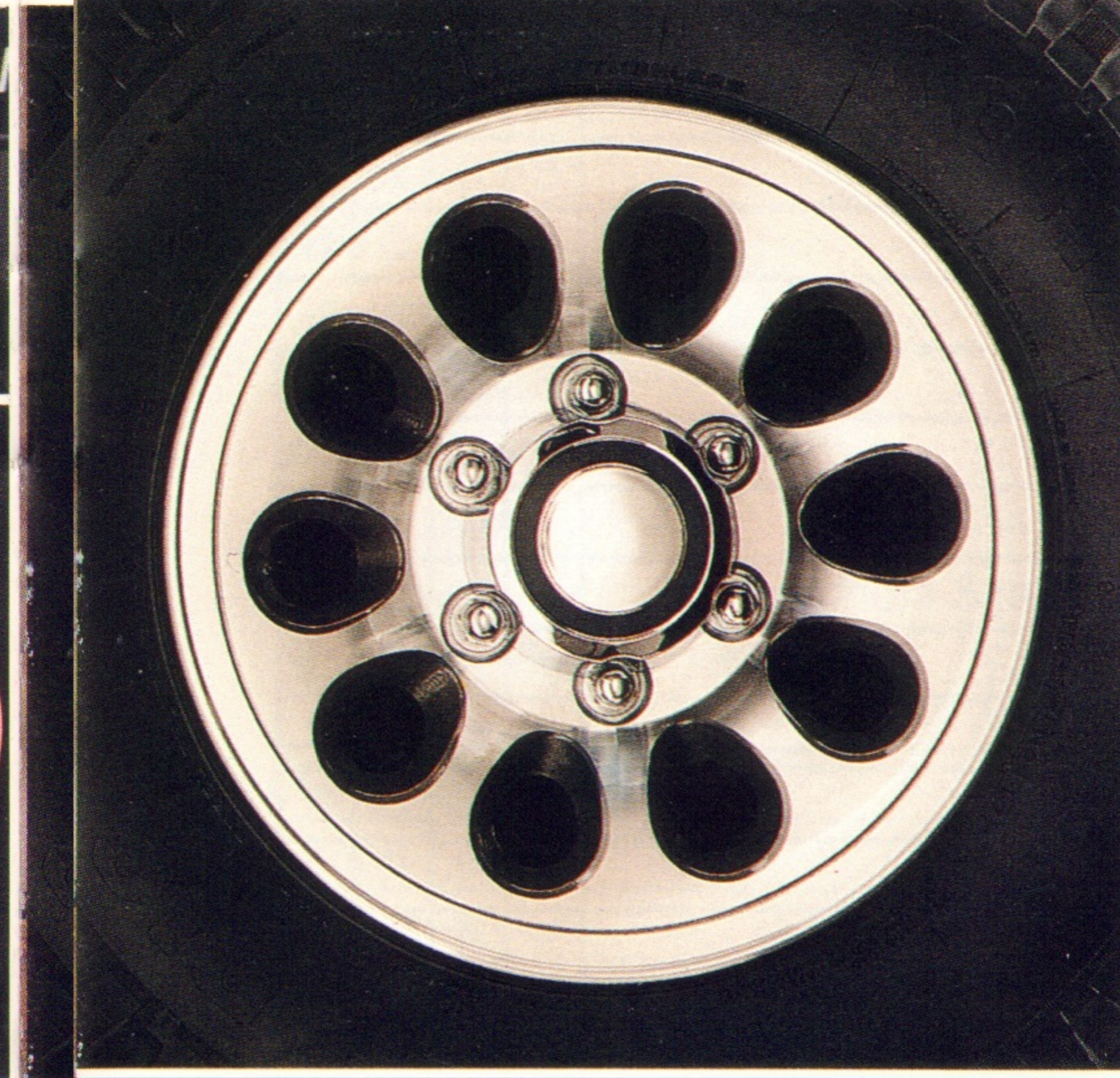
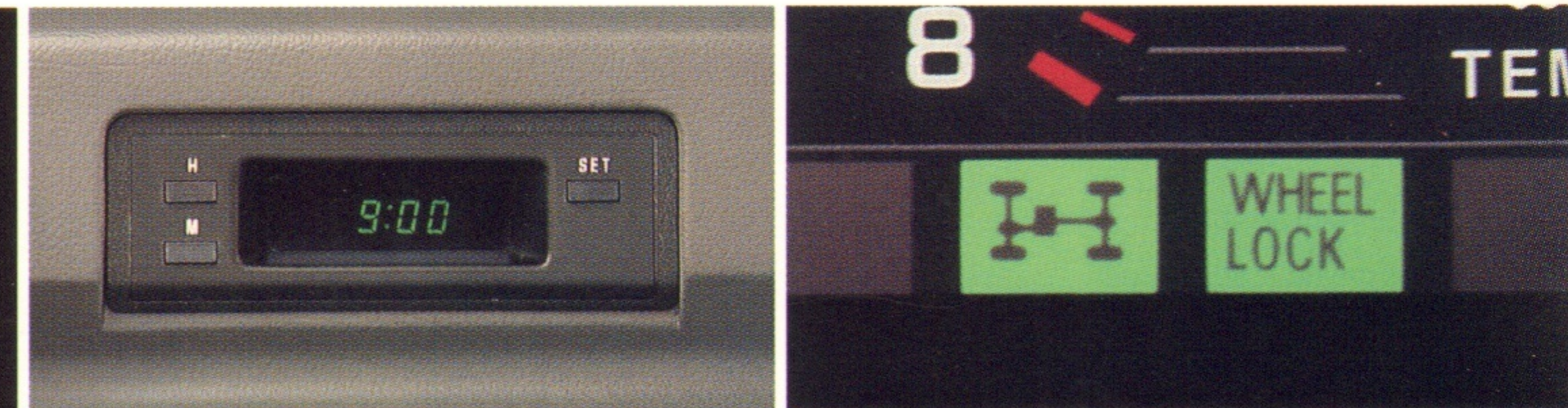
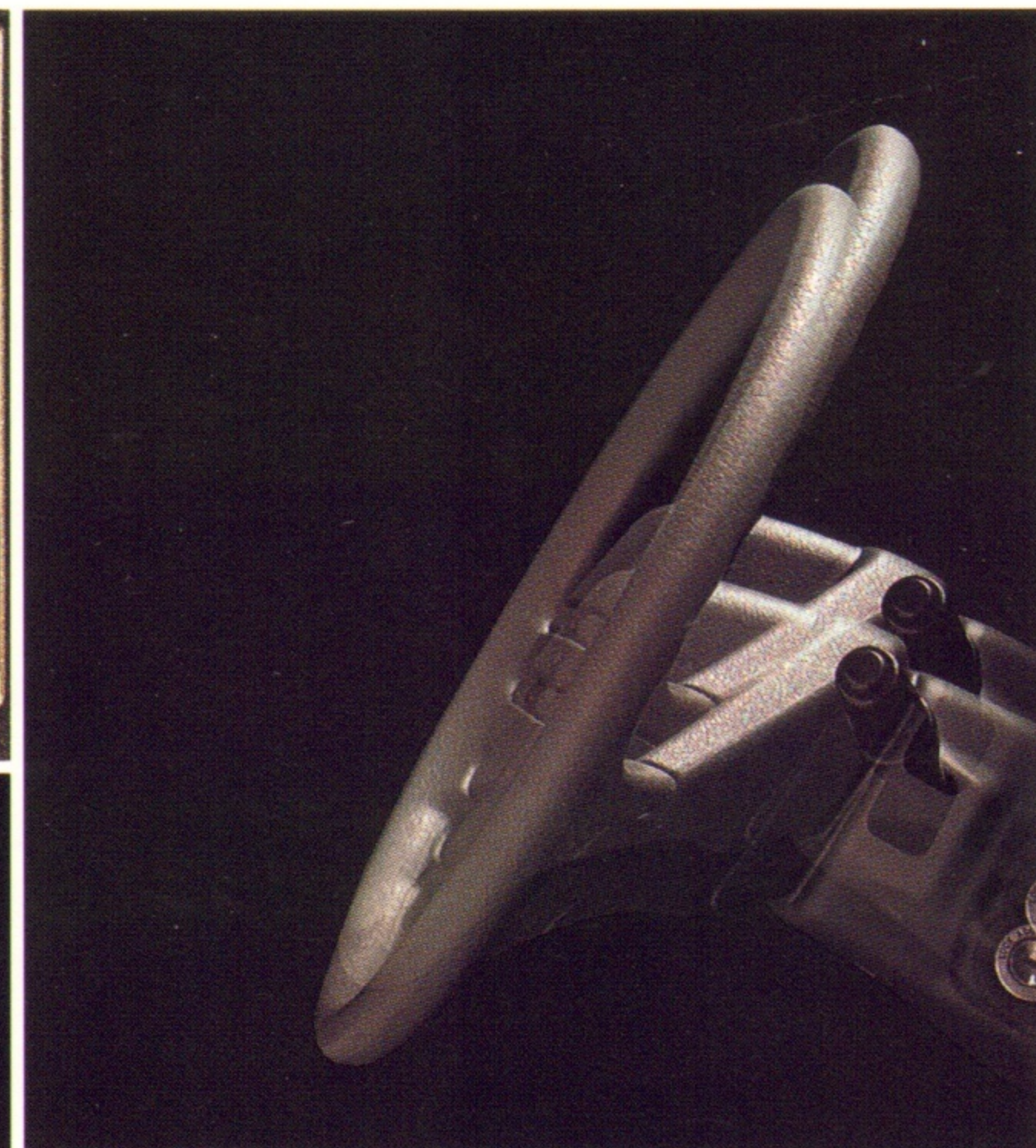
\*This figure is an estimate only. Provided by the U.S. Environmental Protection Agency.



- Independent front suspension; live rear axle with leaf springs and bias-mounted shocks.
- Part-time four-wheel drive system with two-speed transfer case.



# 4 - W H E E L D R I V E F E A T U R E S



## Sound, in Spades.

Every ear hears differently, which is why Mitsubishi offers a broad range of mobile audio systems. An electronically tuned AM/FM stereo is optional on Mighty Max and Mighty Max Sport 4X4s. SPX models can be ordered with an electronically tuned AM/FM stereo cassette player with four speakers for high-quality sound reproduction. Or, if exceptional sound quality is a must, order the four-speaker AM stereo/FM stereo cassette system with nine-band graphic equalizer and high power amplifier. With 25 watts per channel, it offers ample power for superior accuracy. And the nine-band equalizer lets you fine tune the sound to your own taste.

## More supportive seats.

New, redesigned sport bucket seats in SPX models have more side bolstering and hip support to resist lateral forces, and more lumbar support for comfort on long trips. Special features include adjustable headrests, long-travel front-to-rear adjustment tracks and a reclining mechanism that moves in intervals as small as two degrees.

## A Custom Fit.

A height adjustable steering column enhances the driver-friendly interior, allowing you to select your most comfortable driving positions. The steering wheel has a soft-grip, textured two-spoke design that is easy to the touch.

## Complete Air Flow Control.

On all but the Mighty Max Shortbed, an optional sliding rear window is available for improved ventilation and cargo area access. An efficient, high flow air conditioning system can be ordered on all models. Designed to be quiet-running and maintain low-vibration, the air-conditioning system has a flexible four-speed fan with high output and a broad range of settings.

## The Extras.

Practical extras, like a digital quartz clock on the SPX, an indicator light to remind you if your front hubs are locked, and easy-to-use cargo area tie-downs are among the touches that make Mitsubishi trucks an exceptional value. For greater cab-space versatility, there's a thoughtfully designed center console box with built-in cup holders on the SPX.

Not so easy to see are improvements aimed at ensuring long-term service, like a stainless steel exhaust system and a welded steel, double-wall cargo box.

Take your choice of two spacious cab styles, two bed lengths and three trim levels. All of them are tough, loaded with features and built to last.

## Let It Shine.

Brighten up your SPX or Mighty Max Sport with optional aluminum alloy wheels.

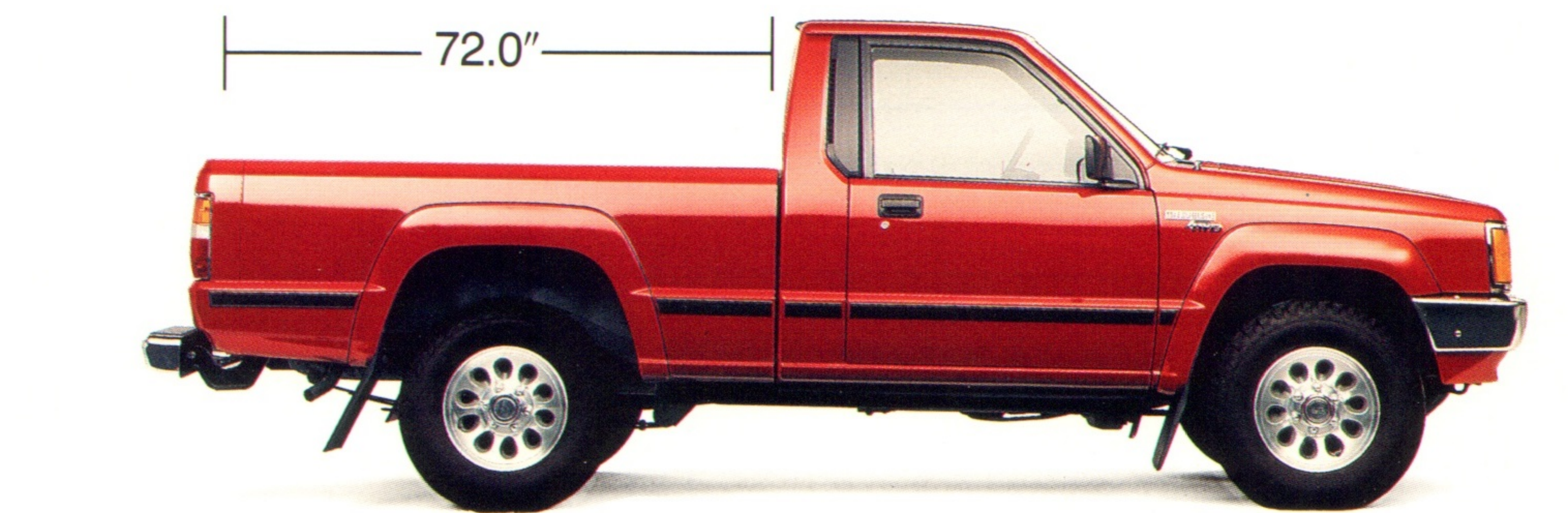
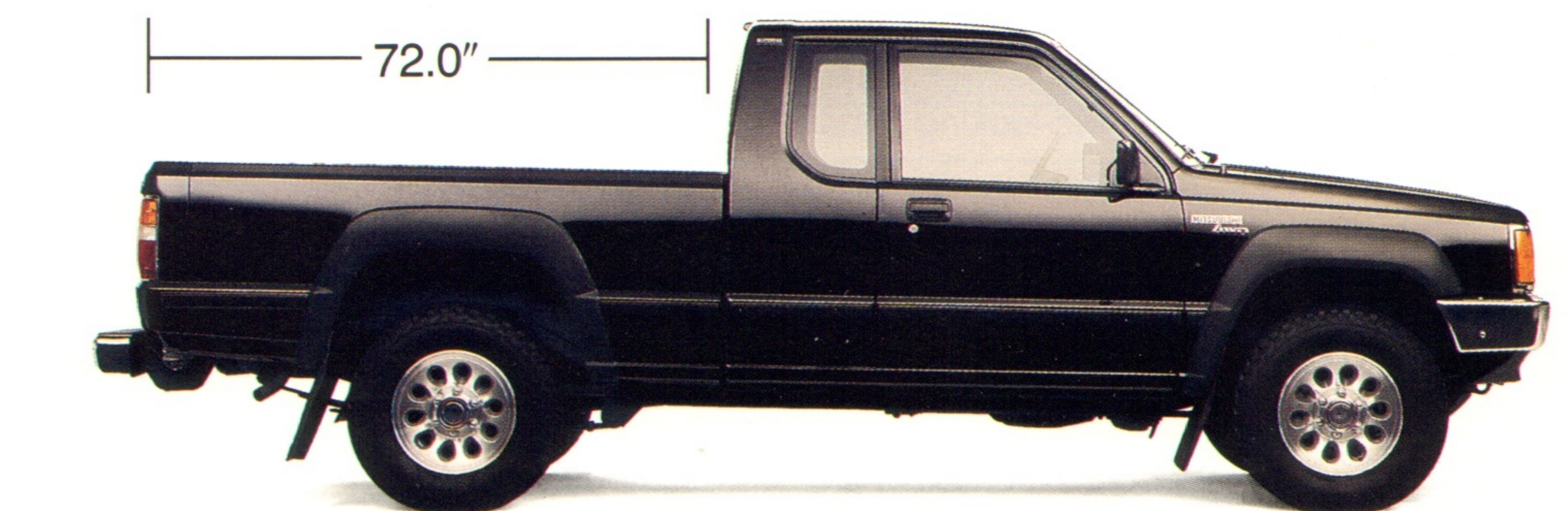
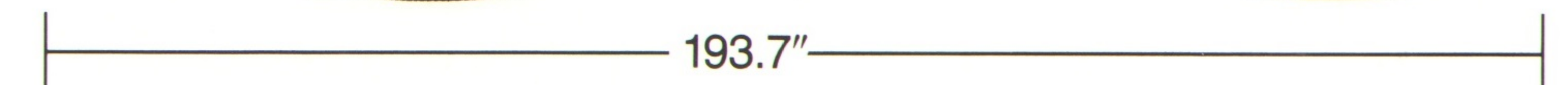
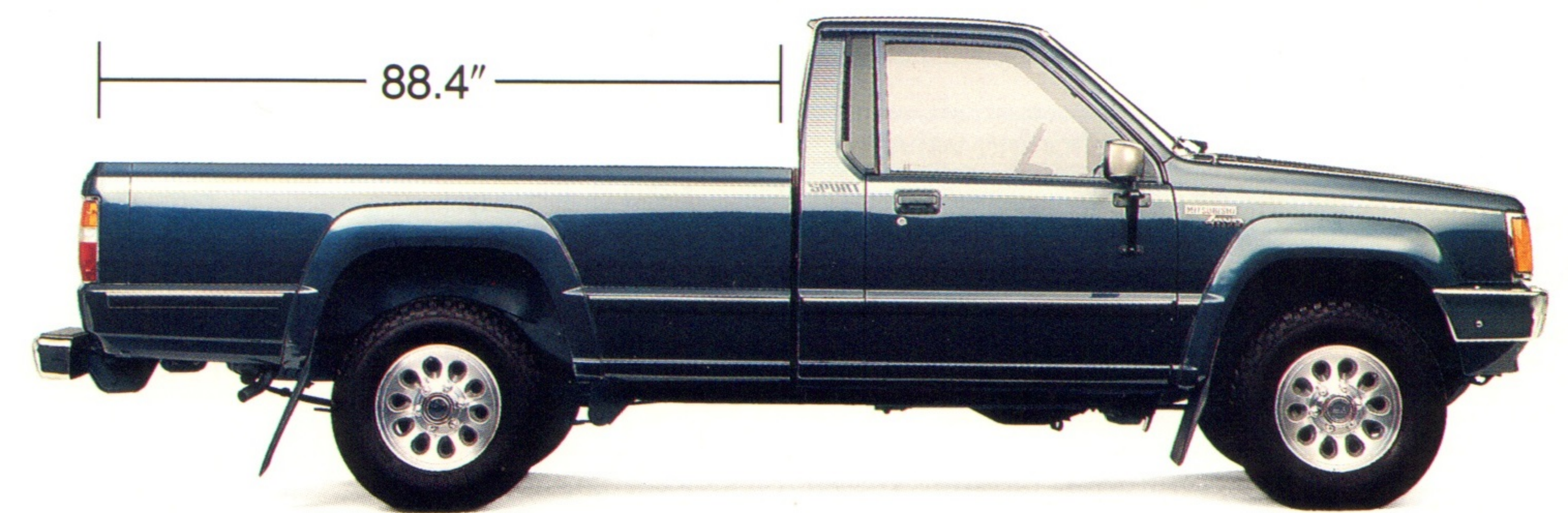
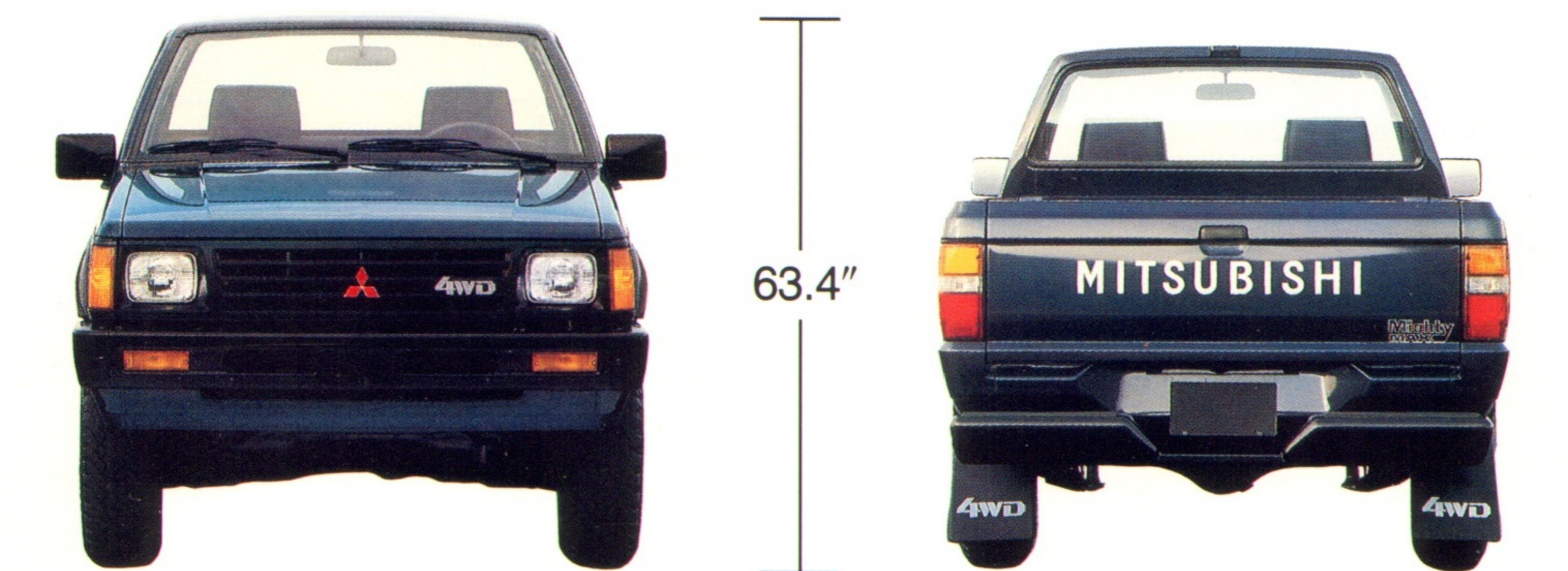
## See the Light.

The handy cargo area lamp keeps the dark away when loading or unloading at night. Standard on all 4WD models.

## Diamond Care<sup>SM</sup>.

### Our Commitment to Quality.

Diamond Care<sup>SM</sup> Mitsubishi's comprehensive new vehicle delivery program, ensures that your new Mitsubishi vehicle is thoroughly prepared, inspected and the features explained before you drive off. We even make sure that the gas tank is full before you leave. And Diamond Care does not end when you leave the dealership. After your first 1,000 miles, you are invited to return to have any problem caused by normal vehicle use taken care of absolutely free.



\*66.6 with bodyside molding.



S P E C I F I C A T I O N S

4WD Features & Options

MECHANICAL		Mighty Max	Sport	SPX	SPX	MacroCab
2.6-liter, SOHC, 4-cylinder engine	S	S	S	S		
Dual Engine Stabilizers™	S	S	S	S		
Electronic ignition system	S	S	S	S		
Automatic valve lash adjusters	S	S	S	S		
Stainless steel exhaust system	S	S	S	S		
5-speed manual overdrive transmission	S	S	S	S		
Automatic locking front hubs	S	S	S	S		
Part-time 4WD system	S	S	S	S		
2-speed transfer case	S	S	S	S		
Limited slip rear differential	-	-	O	O		
Front stabilizer bar	S	S	S	S		
Power-assisted recirculating ball steering	S	S	S	S		
Power-assisted vented front disc brakes	S	S	S	S		
Self-adjusting rear brakes	S	S	S	S		
Loading sensing brake proportioning valve	S	S	S	S		
Maintenance-free battery	S	S	S	S		
Diamond Care <sup>SM</sup>	S	S	S	S		
12-month/12,000-mile New Vehicle Limited Warranty*	S	S	S	S		
36-month/50,000-mile Powertrain Limited Warranty*	S	S	S	S		
36-month/36,000-mile Electronics Limited Warranty*	S	S	S	S		
5-year Anti-Corrosion Perforation Limited Warranty*	S	S	S	S		
INSTRUMENTATION & CONTROLS						
Tachometer, Oil pressure gauge, Voltmeter	-	-	S	S		
Tripmeter, Coolant temperature gauge	S	S	S	S		
Digital quartz clock	-	-	S	S		
Warning lights: Brakes, Battery charge, Low fluid, Seatbelts, Low oil pressure, Auto-locking hubs engaged, 4WD engaged	S	S	S	S		
Full-feature cruise control	-	-	O <sup>1</sup>	O <sup>1</sup>		
Electronically tuned AM/FM stereo radio + 2 speakers	O	O	-	-		
Electronically tuned AM/FM stereo w/cassette + 4 speakers	-	-	O	O		
Electronically tuned AM stereo/FM stereo w/cassette, graphic equalizer +4 speakers	-	-	O	O		
SEATING & TRIM						
Seating capacity, three	S	S	-	-		
Seating capacity, two	-	-	S	S		
Sports type reclining bucket seats	-	-	S	S		
Sport bench seat	S	S	-	-		
Vinyl upholstery	S	-	-	-		
Cloth upholstery	-	S	S	S		
Adjustable headrests	S	S	S	S		
Cut-pile carpeting	-	-	S	S		
Needle punch carpeting	S	S	-	-		
“Secret” storage compartment	-	-	-	S		
Door map pockets	-	-	S	S		
Large armrests	-	-	S	S		
COMFORT & CONVENIENCE						
Air conditioning	O	O	O	O		
Bi-level heating/ventilation system	S	S	S	S		

COMFORT & CONVENIENCE cont'd		Mighty Max	Sport	SPX	SPX	MacroCab
Side window defoggers	S	S	S	S		
Remote hood opener	S	S	S	S		
Height adjustable steering column	S	S	S	S		
2-speed windshield wiper/washer	S	S	S	S		
Variable intermittent wiper feature	-	-	O <sup>1</sup>	O <sup>1</sup>		
Sliding rear window	-	O	O	O		
Large center console w/cup holder & storage	-	-	S	S		
Locking glovebox	-	-	S	S		
Dual sunvisors	S	S	S	S		
Day/night rearview mirror	-	S	S	S		
Passenger assist grips	S	S	S	S		
Cigarette lighter/ashtray	S	S	S	S		
Keyless locking doors	S	S	S	S		
VISIBILITY						
Halogen headlamps	-	-	S	S		
Tinted glass	S	S	S	S		
Dual patch type mirrors	S	-	S	S		
Dual sports type mirrors, bright/black	O	S	O	O		
Passenger-side convex mirror	S	-	S	S		
EXTERIOR						
Front air dam extension	S	S	S	S		
Large flared fenders	S	S	S	S		
Styled mudguards, front & rear	S	S	S	S		
Skid plates: front end, transfer case, fuel tank	S	S	S	S		
Welded double wall cargo box	S	S	S	S		
Steel tie-down hooks	S	S	S	S		
Bodyside moldings	O	S	S	S		
Cargo area light	S	S	S	S		
Grille, black	S	-	-	-		
Grille, bright accent	-	S	S	S		
Fixed-length whip antenna	O	O	O	O		
Front bumper, black	S	-	-	-		
Front bumper, bright	-	S	S	S		
Two-tone paint	-	-	O	O		
Rear step bumper, black	O	-	-	-		
Rear step bumper, chrome	-	S	O	O		
WHEELS & TIRES						
Styled steel wheels w/hubcaps	S	-	-	-		
Steel spoke-style wheels	-	S	S	S		
Alloy wheels	-		O	O		
P225/75R15 all-terrain radials, BSW	S	S	S	S		
EXTERIOR COLORS/INTERIOR TRIM						
Summit White/Brown	S	-	-	-		
Selbia Black/Gray	-	S	S	S		
Baja Red/Gray	S	S	S	S		
Silver/Blue	-	S	S	S		
Florence Beige/Brown	S	-	S	S		
Baltic Blue/Blue	S	S	S	S		
Selbia Black /Gray Kaiser Silver	-	-	S	S		

S = Standard      O = Optional  
<sup>1</sup> = Cruise control and variable intermittent wipers come together as a package.  
<sup>2</sup> = For complete details, ask your salesperson for a copy of the limited warranty.

4WD Technical Specifications

ENGINE				
Model No. and Type	G54B, SOHC, 4-cylinder, in-line			
Bore & Stroke (in./mm.)	3.59 x 3.86/91.1 x 98.0			
Displacement (cu. in./c.c.)	156/2555			
Compression Ratio	8.7:1			
Horsepower @ rpm (BHP)	109 @ 5000			
Torque @ rpm (lb-ft)	142 @ 3000			
Induction Type	1-2V carburetor			
Emission Control System	EGR, air induction, 3-way catalyst w/feedback control			
CLUTCH				
Clutch Type	Single-plate, dry			
Diameter (in.)	8.86			
TRANSMISSION RATIOS				
5-Speed Manual Overdrive	1st/3.967, 2nd/2.136, 3rd/1.360, 4th/1.000, 5th/0.856, Rev/3.578			
Final Drive Ratio	3.909			
4-WHEEL DRIVE SYSTEM				
Type	Part-time			
Transfer Case Type	2-speed			
Ratios—High Range —Low Range	1.000:1 1.944:1			
Locking Front Hubs	Automatic			
SUSPENSION				
Front Type	Independent with unequal-length A-arms, torsion bars, telescopic shock absorbers, 0.79-in. stabilizer bar			
Rear Type	Live axle semi-elliptic leaf springs, bias-mounted telescopic shock absorbers			
DIMENSIONS		Shortbed	Longbed	MacroCab
Chassis/Body Construction	Steel body on ladder frame			
Wheelbase (in./mm.)	105.5/2680	116.5/2960	116.5/2960	
Overall Length (in./mm.)	177.2/4500	193.7/4920	188.2/4780	
Overall Width (in./mm.)	65.9/1675 (66.4/1687 w/bodyside moldings)			
Overall Height (in./mm.)	63.4/1610	63.4/1610	64.4/1635	
Tread Width (in./mm.)	Front—54.9/1395    Rear—55.7/1415			
Ground Clearance (in./mm.) @ MVMA load	6.9/175	6.9/175	7.3/185	
Cargo Box Length (in./mm.)	72.0/1829	88.4/2245	72.0/1829	
Cargo Box Width (in./mm.)	59.0/1499	59.0/1499	59.0/1499	
Cargo Box Height (in./mm.)	15.8/400	15.8/400	15.8/400	
Approach Angle (degrees) @ MVMA load	33.1	32.5	35.7	
Departure Angle (degrees) @ MVMA load	25.3	22.3	24.3	
Head Room (in./mm.)	38.9/987	38.9/987	38.9/988	
Shoulder Room (in./mm.)	55.5/1410	55.5/1410	55.5/1410	
Leg Room (in./mm.)	41.9/1064	41.9/1064	43.4/1102	
WEIGHTS				
Curb Weight (lbs./kg.)	Mighty Max—3030/1374 SPX—3055/1385	Mighty Max Sport Long Bed—3183/1444	SPX MacroCab—3220/1461	

WEIGHTS cont'd		Shortbed	Longbed	MacroCab
Payload Ratings		Mighty Max— 1625/737 SPX— 1600/726	Mighty Max Sport Long Bed— 1662/754	SPX MacroCab— 1625/737
TRAILER TOWING CAPACITY				
Towing Capacity, maximum (lbs./kg.)		2000/907 (with trailer brakes) 1000/454 (without trailer brakes)		
Tongue Weight (lbs./kg.)		200/91 (with trailer brakes) 100/40 (without trailer brakes)		
STEERING				
Type		Recirculating ball, variable power-assisted		
Overall Steering Ratio		17.8:1		
Turning Circle, Curb to Curb		40.0/12.2	43.9/13.4	43.9/13.4
BRAKES				
Front		Vented disc		
Rear		Self-adjusting drum		
Diameter Front/Rear (in.)		10.8/10.0		
Total Brake Swept Area (sq. in.)		341		
ELECTRICAL SYSTEM				
Battery		12-volt, maintenance-free		
Ignition System		Electronic		
Alternator Rating (amps)		45		
FUEL SYSTEM				
Type Fuel Required		Unleaded (RON 91)		
Fuel Pump Type		Mechanical		
Fuel Tank Capacity (U.S. gal.)		15.7	18.2	18.2
WHEELS & TIRES				
Wheel Size and Type		15 x 6JJ, steel		
Tire Size and Type		P225/75R15 all-terrain, BSW steel belted radials		
Spare Tire Size and Type		Full Size		
FUEL ECONOMY FIGURES				
Model	Engine/Trans.	Fed. Est. City	Fed. Est. Highway	
Mighty Max	2.6/5M	19**	22**	
MM Sport	2.6/5M	19**	22**	
SPX	2.6/5M	19**	22**	
SPX Macrocab	2.6/5M	19**	22**	

S = Standard      O = Optional  
  
\* = For complete details, ask your salesperson for a copy of the limited warranty.  
  
\*\*These figures are estimates only, provided by the U.S. Environmental Protection Agency (EPA).  
  
Technical data, features, options and other equipment shown in this catalog are based on the latest available information at the time of printing and are subject to change without notice. Some vehicles are shown with optional equipment. For further information on the additional options and accessories, contact your Mitsubishi Motors Dealer. Availability at dealers of vehicles with specific features may vary. Headlights, parking lights and fog lights on vehicles lighted for illustration purposes only.  
  
Call 1-800-447-4700 for your nearest Mitsubishi Motors Dealer.  
  
Part #MMSA-ADV-5039. Litho in U.S.A. ©1987 Mitsubishi Motor Sales of America, Inc.



# 2 - W H E E L D R I V E S P X M A C R O C A B



## Get There in High Style.

The rugged, roomy SPX 2WD Macrocab is an excellent example of style blended with performance. The wide flared fenders, distinctive side moldings, spoker wheels, bright grille and front bumper give it a bold, sporty look that demands to be noticed.

But don't let its high style deceive you. The SPX 2WD Macrocab is also high on performance. The 2.6-liter SOHC engine turns out 109 horsepower that gets you

to your destination quickly and reliably. Couple that with a 5-speed manual overdrive transmission, independent front suspension with unequal length A-arms and power-assist vented front disc brakes and you'll know what performing with style is all about.

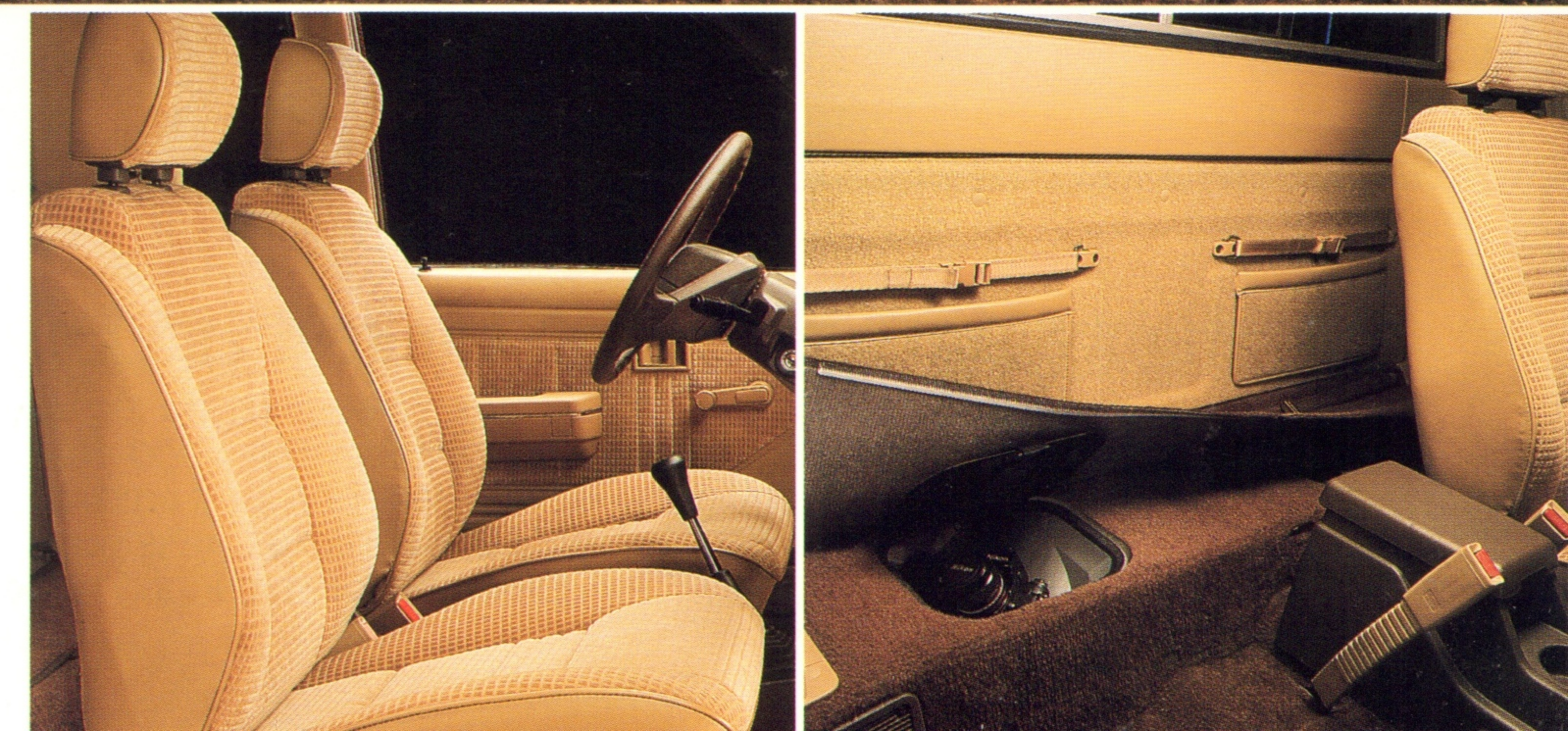
Inside the SPX 2WD Macrocab is a whole new definition of comfort. Low-back, reclining bucket seats with adjustable headrests firmly cradle you for the

long or short haul. The steering column is height adjustable for your driving comfort. The instrument panel is clearly designed for easy readability. A quick glance reveals the speedometer, tripmeter, tachometer, coolant temperature gauge, digital quartz clock, and vital function warning lights.

And if you're looking for room, there is plenty to spare. Behind the seats you'll

find space enough for personal cargo such as tote bags, packages, and coolers. On the transom are twin pockets with bag straps for small items. A parcel strap on the floor holds larger items securely in place. And, a hidden compartment under the floor lets you secure valuables from prying eyes.

Space, style and performance. The SPX 2WD Macrocab has it all.







## Mighty Max Sport. High Content at a Low Price.

If you're looking for a few extras, we'll meet you halfway...and then some. The Mighty Max Sport is Mitsubishi's high-content/high value package featuring a level of all-around performance, comfort and style that belies its small price tag.

The Mighty Max Sport offers as standard features a powerful 2.6-liter engine, P205/75R14 tires and spoker style wheels, and is available in long bed and short bed configurations. For a touch of comfort, there is the cloth-upholstered interior, large armrests

and a passenger grip handle. Plus there's the long list of sporty exterior features like bright sports-type side mirrors and wide body side moldings. A bright grille, chrome front and rear (step-up) bumpers, and extensive use of easy-to-clean bright trim adds sparkle

and helps resist weathering. It's an appearance package that looks like a million dollars.

Mighty Max Sport. An exceptionally well-heeled, high-value pickup. It's a tough package to beat.



M I G H T Y   M A X   &   M I G H T Y   M A X   M A C R O C A B



**Mighty Max.  
Can-Do Ability in a  
Carlike Package.**

"Able" is the word for Mighty Max. As in *drivable*, *comfortable* and *reliable*. Not to mention *valuable*.

It's a pickup that extends the limits of basic transportation beyond everyday

boundaries with exceptional standard features everywhere you look. In fact, if you shop around, you'll find that Mighty Max is one of the best-equipped, most feature-packed pickups available in

standard trim. You'd expect to pay more for so many extras, but the Mighty Max traditionally offers the best value among low-priced pickups anywhere.

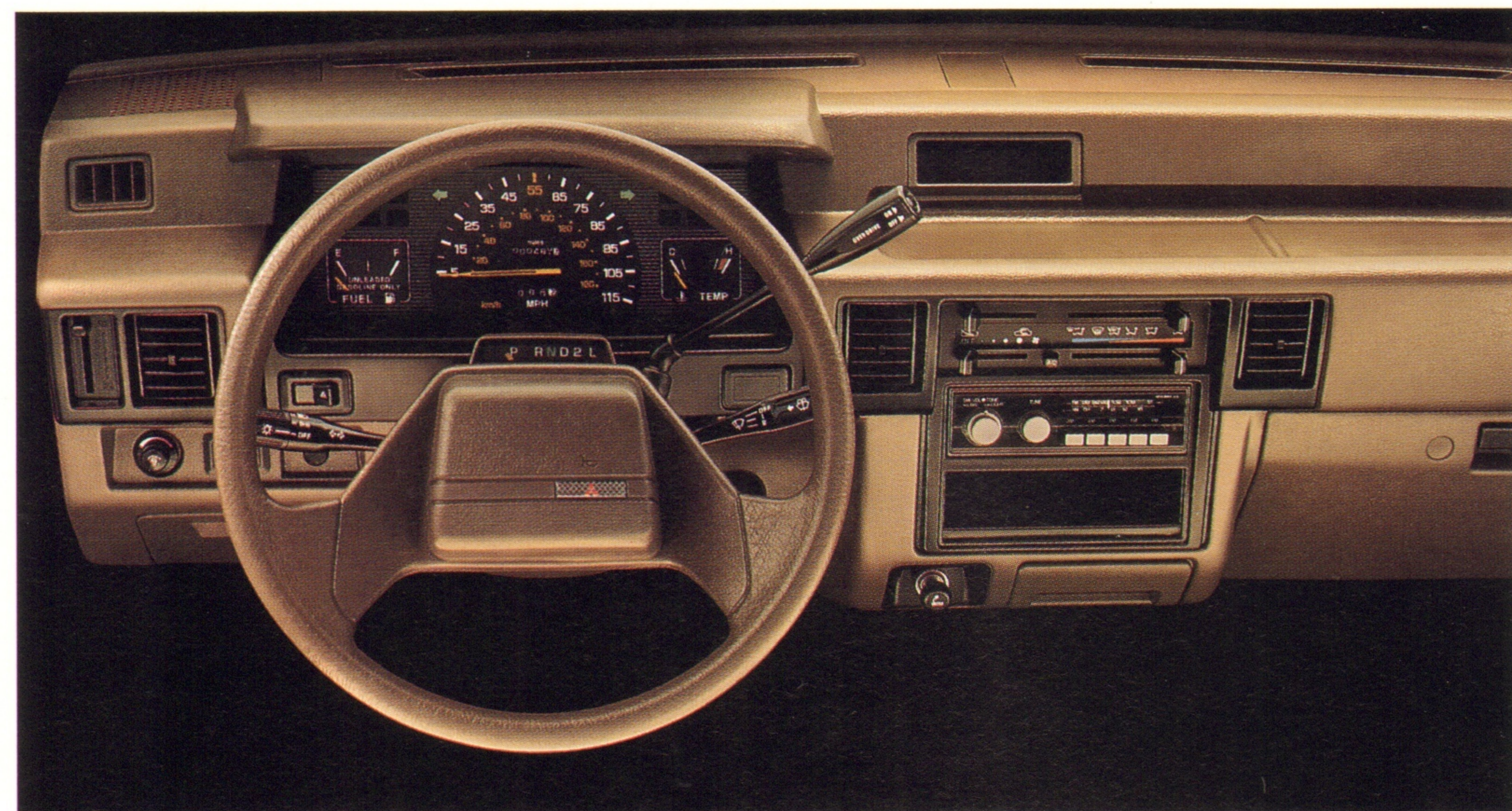


## Carlike Instrumentation.

The instrument panel is easy to read, complete, yet uncluttered. Warning lights are clustered to monitor the brakes and alternator, oil pressure, fluid level and other functions, ready to provide information at a glance. A separate temperature gauge keeps tabs on the cooling system. A dual bi-level heating/ventilation system features a four-speed fan for precise all-weather air flow control. Other standard "extras" include a handy resettable tripmeter and a two-speed windshield wiper system.

### Loaded with Features—Standard.

Every Mighty Max comes with a truckload of convenient, user-friendly standard-equipment extras. The height-adjustable steering column permits the perfect driving position and provides a relaxing variety of column heights for long trips. The soft vinyl bench seat (cloth on the Mighty Max Sport) has



adjustable headrests, and the cab features full carpeting and full headliner—not usually found on a base model pickup. Armrests and color-coordinated

dual sun visors reduce fatigue and overall driving effort. There's even a sport steering wheel made with driving comfort in mind.



Mighty Max Sport cloth bench seat.



Mighty Max with vinyl bench seat.

## More Room, More Power.

With Mitsubishi Mighty Max, you don't have to step up in price to step into extra room. Unlike some other extended cab pickups, you can buy a Mighty Max Macrocab without moving into a higher priced luxury trim package. We also include the larger 2.6-liter engine and 18.2 gallon fuel tank standard. You get much more room, much more storage and much more power—without spending much more money.

### Smooth Moves.

The new, four-speed automatic transmission is an option available only on the Mighty Max Shortbed pickup. Equipped with an overdrive 4th gear for highway cruising, the transmission permits effortless operation without sacrificing control or economy.\* And because of its column-mounted shifter, there's more leg room in the middle. Coupled with a wide sport bench seat, that means true three-across seating versatility.

\*See EPA mileage figures in the specifications section.



### Carlike Manners, Trucklike Capacity.

Carlike ergonomic design is a big plus, but a real truck also has to be strong enough to work long and hard. Mighty Max's 1620 pound payload is one of the largest in the class; it's a true ¾-ton contender. The cargo bed features a welded, double-wall box with functional steel tie-downs. You'll also like the lamp that lights the rear cargo area, another standard feature.

### We Keep Our Promises.

It's easy to talk about strength, but backing it up is something else. We have so much confidence in our trucks, we back them with three separate extended warranties on the powertrain, electronic equipment and against perforation by rust.\*\*

Mighty Max. Tough. Versatile. Able in every way. And an extraordinary package of features at an exceptionally affordable price.

\*\*For complete details, see copy of Limited Warranties at your Dealer.





## Mighty Max Sport Trucks. See How They Run.



### Craftsmanship That's Hard to Beat.

It's hard to say what makes Mitsubishi trucks so well suited to racing.

Maybe it's the powerplant. Our 109 horsepower engine revs smoothly and willingly due to its overhead cam design and Dual Engine Stabilizers™. The stabilizers damp out vibration so well that Porsche licensed the right to use the system on their 944 series cars.

Because it's built for high torque on the street and geared tall for quiet running, the 2.6-liter also makes a super competitive powerplant—one that pulls strongly coming out of corners and has solid passing power on the straights.

Or maybe it's the suspension. The fully independent front has unequal length A-arms, coil springs, telescopic shock absorbers and a 0.79 inch stabilizer bar for truly accurate cornering. It's a setup



that keeps the entire chassis under control, even at high speeds or under heavy cornering loads. It's enhanced by a quick-ratio steering system, for a well-controlled, flat-cornering, precise-handling machine.

Then again, there are the brakes. Stopping power is provided by a balanced braking system with a total swept area of 323 square inches—enough to assure excellent brake feel and easily controlled stops. Ventilated, 10.8-inch front discs resist fade even after repeated hard stopping, and the self-adjusting drums in the rear are coupled with a load sensor that adjusts braking to the weight of the load in the bed.

Then there's the short-throw, close-ratio gearbox that lends itself to sure, quick gear selection—maximizing speed

over a road course just as it enhances drivability on the street. On the track, the fifth gear overdrive provides top-end passing power on the long straights.

Or maybe it's the little things, like the softly-contoured body fitted with flush glass and smooth rounded corners. It not only looks stylish, but it's also efficiently aerodynamic.

Or maybe it's all of the above. In any case, we like our chances. So do *ROAD & TRACK* editors John Dinkel and Joe Rusz, who have such faith in Mighty Max Sport trucks they drive them in SCCA Coors Racetruck Challenge series competition.

Mighty Max Sport trucks. When you have one of the hottest two-wheel-drive streetfighters around, it's hard not to be confident.





# 2 - W H E E L D R I V E F E A T U R E S

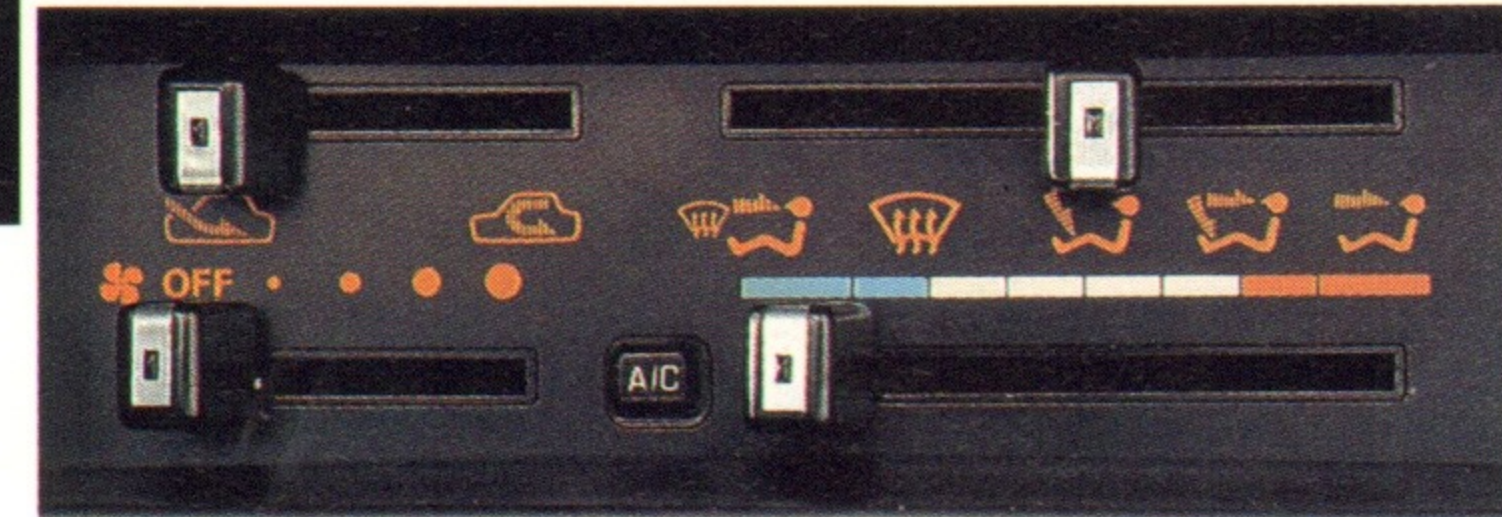
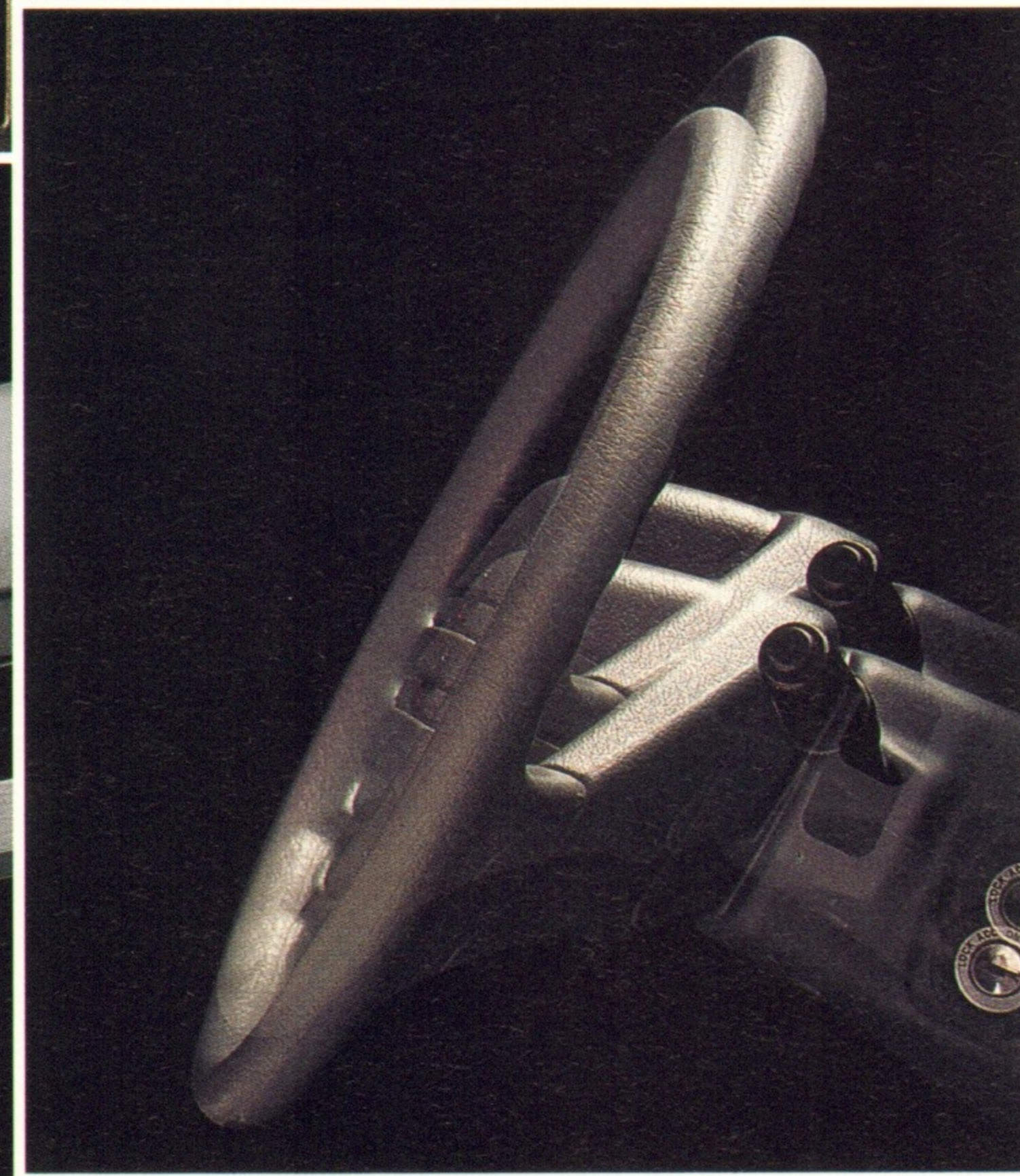


## Brilliant Sound.

A quality optional electronically tuned AM/FM stereo with 2 speakers is available for Mighty Max and Mighty Max Sport models. For even truer, more accurate sound reproduction, an electronically tuned 4-speaker AM/FM stereo cassette can be ordered for SPX models. And an electronically tuned high-fidelity, 4-speaker AM stereo/FM stereo with cassette player is optional on SPX trucks. It's an exceptionally sound system, with state-of-the-art electronic controls and a nine-band graphic equalizer that lets you dial in sound just the way you like it.

## Light Switch.

The convenient cargo area lamp makes loading and unloading at night a lot easier. Standard on all 2WD models.



## Space and Time.

A neatly positioned, digital quartz clock, standard on SPX models, makes it easy to keep your schedule.

## A Height Adjustable Steering Column.

Standard on all models, the height adjustable column ensures comfortable, custom-fitting driver-to-wheel relationships—no matter how tall or short you may be.

## Cool and Comfortable.

Control your interior temperature ranges with an optional air conditioning system. A 10-cylinder compressor delivers greater cool airflow with decreased noise and vibration.

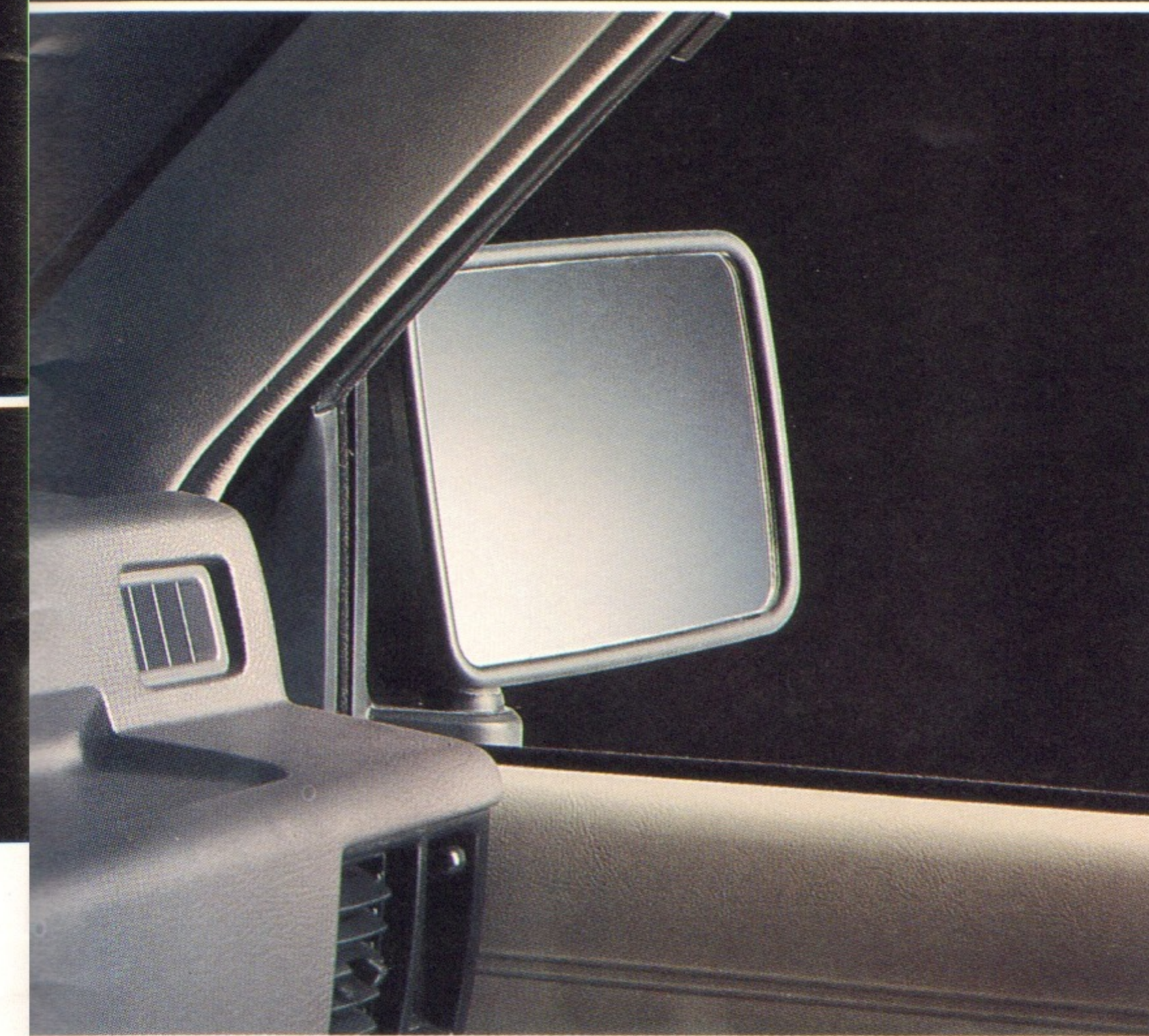


## Handy Storage Pockets.

Located in the doors of SPX trucks, these pockets help keep the front seating area clean, organized and uncluttered. There is also a locking glovebox, underseat pockets and a new center console box that has a built-in cup holder, clever features that make the most of valuable interior space.

## Diamond Care<sup>SM</sup>. Our Commitment to Quality.

Diamond Care<sup>SM</sup> Mitsubishi's comprehensive new vehicle delivery program, ensures that your new Mitsubishi vehicle is thoroughly prepared, inspected and the features explained before you drive off. We even make sure that the gas tank is full before you leave. And Diamond Care does not end when you leave the dealership. After your first 1,000 miles, you are invited to return to have any problem caused by normal vehicle use taken care of absolutely free.

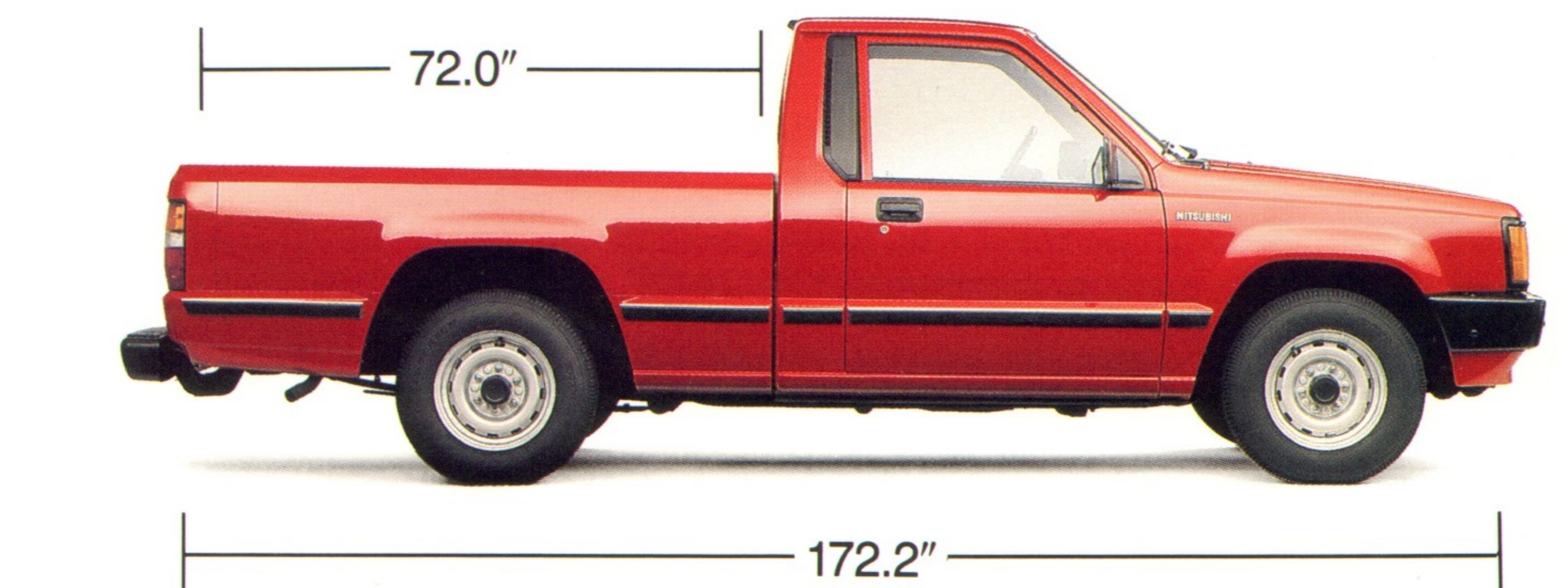
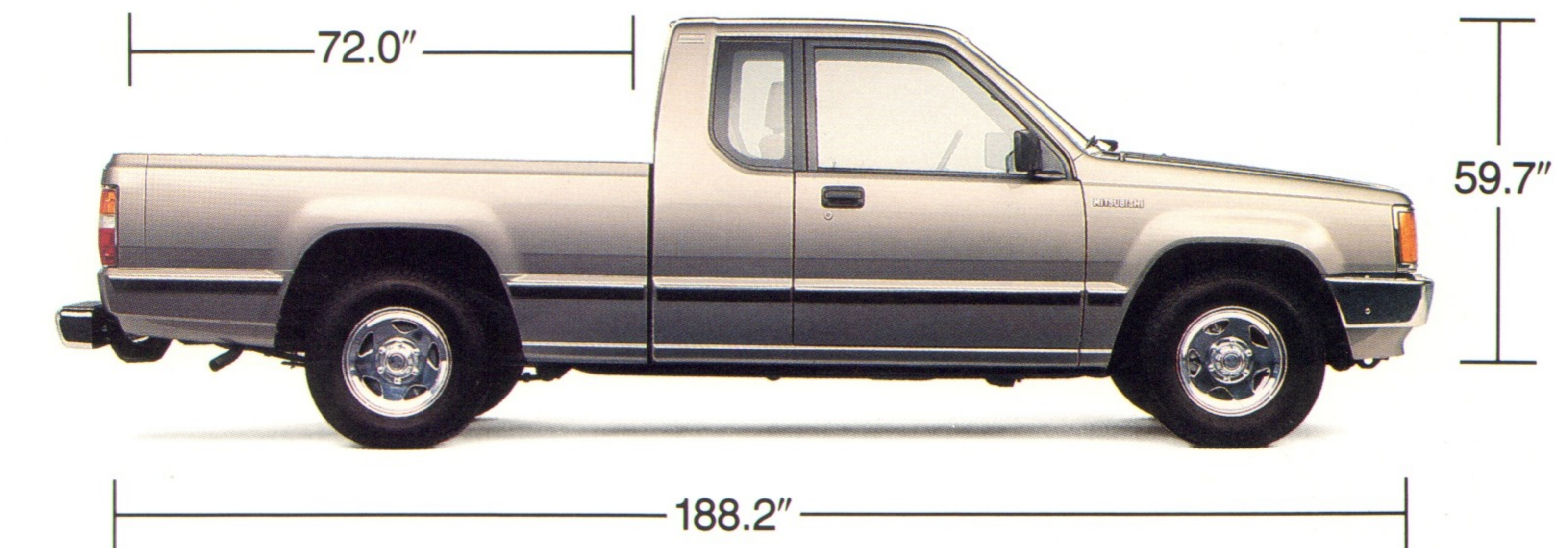
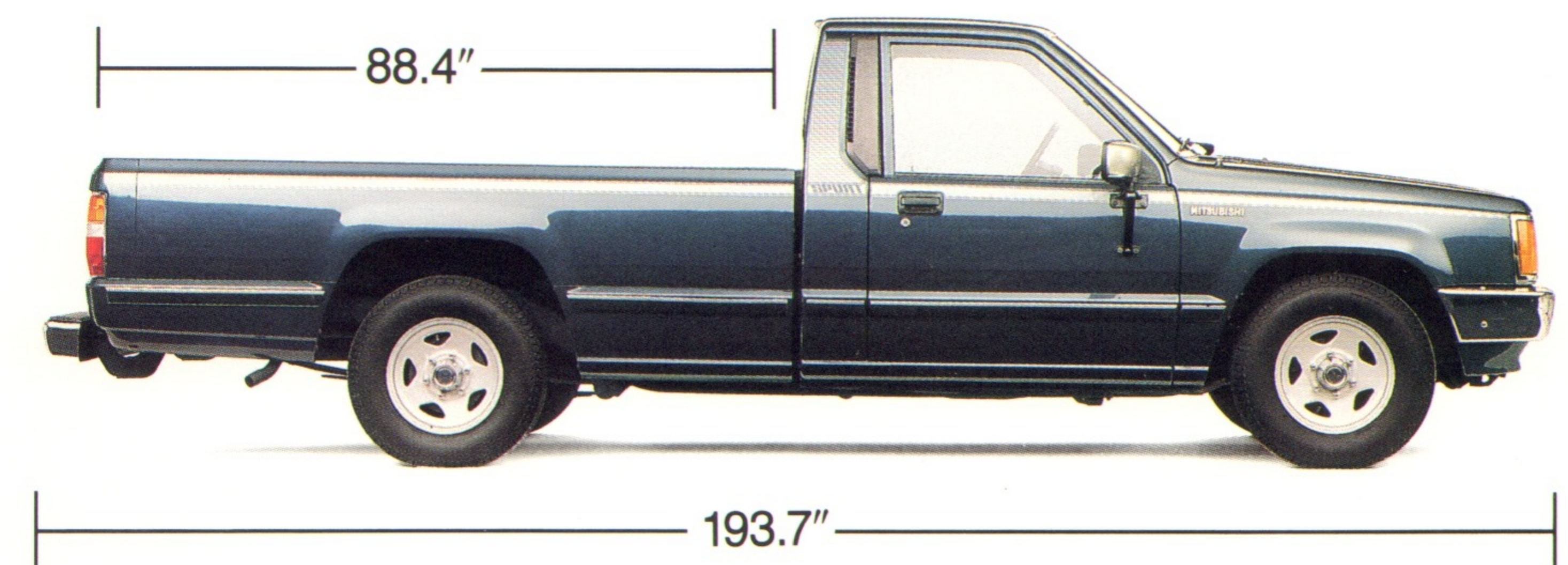
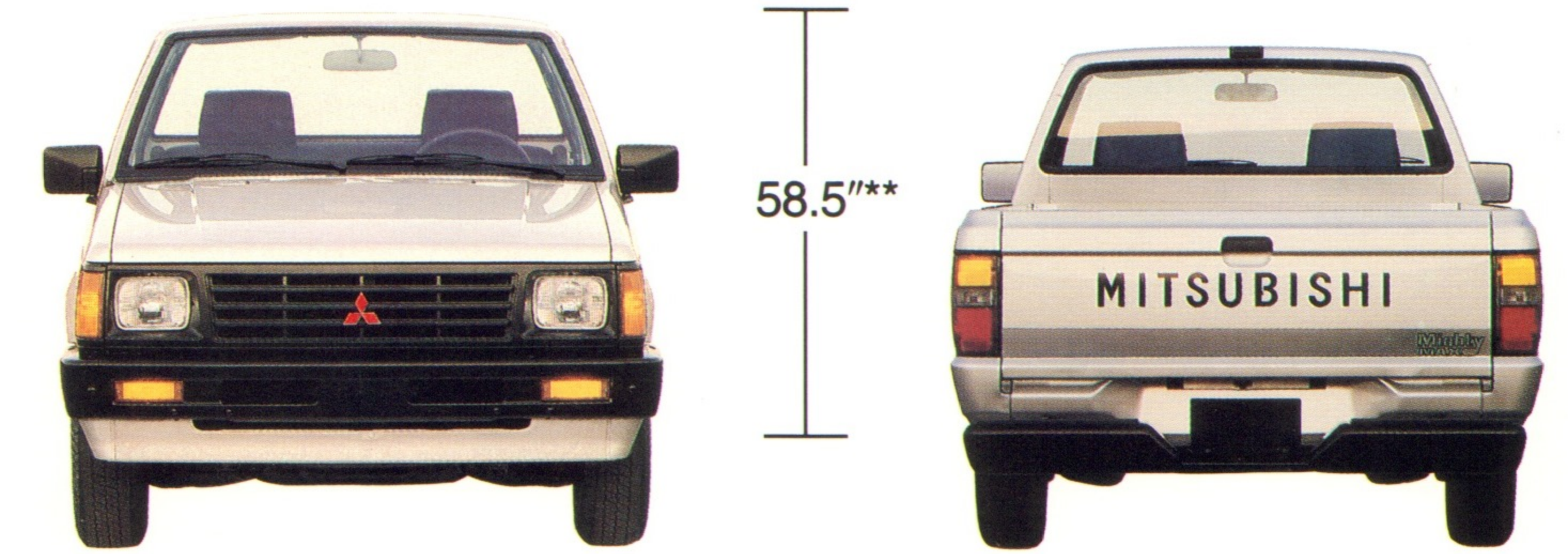


## Flow-Through Ventilation.

Enhance air flow with the optional sliding rear window. The window adds to the cab's natural air flow, letting fresh air pass through freely. It also allows easy access to the cargo area.

## A Wider View.

Attractive dual black patch mirrors enhance visibility to the sides and rear. Standard on Mighty Max, Mighty Max One-Ton, Mighty Max Macrocab and SPX Macrocab.



\*66.2" with bodyside molding.  
\*\*58.3" Mighty Max only.





## Mighty Max One-Ton. Ready to Work.

The Mighty Max One-Ton truck is more than just another pretty face. We load it with value, so you can load it with cargo.

The same high level of comfort, convenience and rugged dependability built into every Mighty Max is included in the One-Ton, plus extra features that make hard work easy.

Every One-Ton Mighty Max comes with our powerful 2.6-liter engine matched with low, 4.22:1 differential gearing. Coupled with a 5-speed overdrive transmission, the result is gearing that multiplies engine torque by a factor of 16.74—enough power to get full loads rolling without strain. Once on the highway, the overdrive fifth gear keeps cruising speeds high and engine wear low.

A heavy-duty, smooth-riding suspension package handles payloads of up to 2110 pounds, and its 88.4" bed gives you plenty of room to pile in the cargo. The One-Ton may work like a Clydesdale, but it maneuvers more like a quarter-horse, due to quick-ratio recirculating ball power assist steering. A comfortable cab, with adjustable steering column, hooded instrument panel and stalk-

mounted controls help make time at the wheel fly by.

Vented front disc brakes with generous swept area provide superior stopping power, and are backed up by self-adjusting rear drum brakes with a load-sensing proportioning valve that helps keep braking consistent whether the truck is loaded with cargo or heading home after a long day's work.

There's also an optional bed mat or bed liner to protect your investment. Use it to keep your cargo unscratched from contact with bed metal and to protect the bed from dents caused by heavy hauling.

Rugged. Dependable. Ready to work. That's why we call it Mighty Max One-Ton.





S P E C I F I C A T I O N S

2WD Features & Options

MECHANICAL		Mighty Max	MM MacroCab	1-Ton	MM Sport	SPX MacroCab
2.0-liter, SOHC, 4-cylinder engine	S	-	-	-	-	
2.6-liter, SOHC, 4-cylinder engine	-	S	S	S	S	
Dual Engine Stabilizers™	S	S	S	S	S	
Electronic ignition system	S	S	S	S	S	
Automatic valve lash adjusters	S	S	S	S	S	
Stainless steel exhaust system	S	S	S	S	S	
5-speed manual overdrive transmission	S	S	S	S	S	
4-speed automatic overdrive transmission w/column shift	O	-	-	-	-	
Power-assisted vented front disc/rear drum brakes	S	S	S	S	S	
Load sensing brake proportioning valve	S	S	S	S	S	
Stabilizer bar, front	S	S	S	S	S	
One-ton cargo carrying capacity	-	-	S	-	-	
Power-assisted steering	O	O	S	O	O	
Maintenance-free battery	S	S	S	S	S	
Diamond Care <sup>SM</sup>	S	S	S	S	S	
12-month/12,000-mile New Vehicle Limited Warranty*	S	S	S	S	S	
36-month/50,000-mile Powertrain Limited Warranty*	S	S	S	S	S	
36-month/36,000-mile Electronics Limited Warranty*	S	S	S	S	S	
5-year Anti-Corrosion Perforation Limited Warranty*	S	S	S	S	S	
INSTRUMENTATION & CONTROLS						
Tachometer, Oil pressure gauge, Voltmeter	-	-	-	-	S	
Tripmeter, Coolant temperature gauge	S	S	S	S	S	
Digital quartz clock	-	-	-	-	S	
Full-feature cruise control	-	-	-	-	O	
Electronically tuned AM/FM radio + 2-speakers	O	O	O	O	-	
Electronically tuned AM/FM w/cassette + 4-speakers	-	-	-	-	O	
Electronically tuned AM/FM w/cassette, graphic equalizer + 4 speakers	-	-	-	-	O	
SEATING & TRIM						
Sports type reclining bucket seats	-	S	-	-	S	
Sports bench seat	S	-	S	S	-	
Vinyl upholstery	S	S	S	-	-	
Cloth upholstery	-	-	-	S	-	
Velour upholstery	-	-	-	-	S	
Adjustable headrests	S	S	S	S	S	
Cut pile carpeting	-	-	-	S	S	
Needle punch carpeting	S	S	S	-	-	
Concealed storage compartments	-	S	-	-	S	
Cargo straps	-	S	-	-	S	
Cab back trim, upper section	-	-	-	-	S	
Cab back trim, lower section	-	S	-	-	S	
Door map pockets	-	-	-	-	S	
Full door trim	-	-	-	S	S	
Large armrests	-	-	-	S	S	

COMFORT & CONVENIENCE					
Air conditioning	O	O	O	O	O
Bi-level heating/ventilation system	S	S	S	S	S
Remote hood release	S	S	S	S	S
Height adjustable steering column	S	S	S	S	S
2-speed windshield wipers/washers	S	S	S	S	S
Sliding rear window	-	-	-	O	O
Large center console w/cup holder & storage	-	-	-	-	S
Locking glovebox	-	-	-	-	S
Passenger assist grip	-	-	-	S	S
Side window defoggers	S	S	S	S	S
Cigarette lighter/front ashtray	S	S	S	S	S
VISIBILITY					
Halogen headlamps	-	-	-	-	S
Tinted glass	S	S	S	S	S
Dual patch type mirrors	S	S	S	-	S
Sports type dual mirrors, bright/black	O	O	O	S	O
Passenger-side convex mirror	S	S	S	-	S
EXTERIOR					
Front air dam extension	S	S	S	S	S
Sport striping	-	-	-	S	-
Welded double wall cargo bed	S	S	S	S	S
Steel tie-down hooks	S	S	S	S	S
Cargo area light	S	S	S	S	S
18.2-gallon fuel tank	-	S	S	S <sup>1</sup>	S
Bodyside moldings	O	O	O	S	S
Grille, black	S	S	S	-	-
Grille, bright accent	-	-	-	S	S
Fixed-length whip antenna	O	O	O	O	O
Front bumper, black	S	S	S	-	-
Front bumper, bright	-	-	-	S	S
Rear step bumper, black	O	O	O	-	-
Rear step bumper, chrome	-	-	-	S	O
Tilt-up/lift-off sunroof	-	-	-	-	O
WHEELS & TIRES					
6 x 14 styled steel wheels, black center cap	S	S	S	-	-
6 x 14 spoke type wheels, bright center cap	-	-	-	S	S
Chrome spoker type wheels	-	-	-	-	O
P195/75R14 radial tires	S	-	-	-	-
P195/75R14 LT radial tires	-	-	S	-	-
P205/75R14 radial tires	-	S	-	S	S
EXTERIOR COLORS/INTERIOR TRIM					
Summit White/Brown	S	S	S	S	-
Selbia Black/Gray	-	-	-	S	S
Baja Red/Gray	S	S	S	S	S
Bright Silver/Blue	S	S	S	S	S
Florence Beige/Brown	-	-	-	S	S
Baltic Blue/Blue	S	S	S	S	S
Dakota Sand/Brown	S	S	S	S	S
Selbia Black/Gray Kaiser Silver	-	-	-	-	S

<sup>1</sup> = On Mighty Max Sport Long Bed only.  
S = Standard      O = Optional

2WD Technical Specifications

ENGINE		
Model No. and Type	G63B. 4-cyl., in-line	G54B. 4-cyl., in-line
Bore & Stroke (in./mm.)	3.35 x 3.46/ 85.0 x 88.0	3.59 x 3.86/ 91.1 x 98.0
Displacement (cu. in./c.c.)	122/1997	156/2555
Compression Ratio	8.5:1	8.7:1
Horsepower @ rpm (BHP)	90 @ 5500	109 @ 5000
Torque @ rpm (lb-ft)	109 @ 3500	142 @ 3000
Induction Type	1-2V carburetor	
CLUTCH		
Clutch Type	Single-plate dry	
Diameter (in.)	8.46	8.86
TRANSMISSION RATIOS		
5-Speed Manual Overdrive	1st/3.967, 2nd/2.136, 3rd/1.360, 4th/1.000, 5th/0.856, Rev/3.578	
4-Speed Automatic Overdrive	1st/2.826, 2nd/1.493, 3rd/1.000, 4th/0.688, Rev/2.703	
Final Drive Ratios	5M-3.909:1 4A-3.909:1	5M-3.545:1 5M/1-Ton-4.222
SUSPENSION		
Front Type	Independent with unequal-length A-arms, coil springs, telescopic shock absorbers, 0.87-in. diameter stabilizer bar	
Rear Type	Rigid axle on semi-elliptic leaf springs, bias-mounted telescopic shock absorbers	
DIMENSIONS		
Chassis/Body Construction	Steel body on ladder frame	
Wheelbase (in./mm.)	Short Bed – 105.1/2670 Long Bed/MacroCab – 116.1/2950	
Overall Length (in./mm.)	Short Bed – 177.2/4500 Long Bed – 193.7/4920 MacroCab – 188.2/4780	
Overall Width (in./mm.)	65.2/1655 (without bodyside molding) 65.7/1669 (with bodyside molding)	
Overall Height (in./mm.)	Short Bed – 58.3/1480 Long Bed – 58.5/1485 MacroCab – 59.6/1515	
Tread Width (in./mm.) – Front	55.1/1400 – Mighty Max 54.7/1390 – MacroCab	55.1/1400 – One-Ton Mighty Max 54.7/1390 – Mighty Max Sport
– Rear	55.7/1415 – Mighty Max 55.3/1405 – MacroCab	55.7/1415 – One-Ton Mighty Max 55.3/1405 – Mighty Max Sport
Cargo Box Length (in./mm.)	Short Bed/MacroCab – 72.0/1829 Long Bed – 88.4/2245	
Cargo Box Width (in./mm.)	59.0/1499	
Cargo Box Height (in./mm.)	15.8/400	
Head Room (in./mm.)	38.8/987 – Regular Cabs 38.9/988 – MacroCab	
Shoulder Room (in./mm.)	55.5/1410	
Leg Room (in./mm.)	41.9/1064 – Regular Cabs 43.4/1102 – MacroCab	
WEIGHTS		
Curb Weight (lbs./kg.)	Mighty Max 5M-2545/1155 4A-2595/1176	Mighty Max Sport S/B 5M-2688/1219 L/B 5M-2788/1265

WEIGHTS cont'd			
Curb Weight (lbs./kg.)	MacroCab 5M-2815/1276	One-Ton Mighty Max 5M-2730/1238 SPX MacroCab 5M-2825/1282	
Payload Ratings (lbs./kg.)	Mighty Max 5M-1620/734 4A-1570/713 MacroCab 5M-1430/649	Mighty Max Sport S/B 5M-1477/670 L/B 5M-1527/693 One-Ton Mighty Max 5M-2110/957 SPX MacroCab 5M-1420/643	
TRAILER TOWING CAPACITY			
Trailer Weight, max (lbs./kg.)	2000/907 (with trailer brakes) 1000/454 (without trailer brakes)		
Tongue Weight (lbs./kg.)	200/91 (with trailer brakes) 100/40 (without trailer brakes)		
STEERING			
Type	Recirculating ball		
Overall Steering Ratio—Manual —Power-assisted	17.2—21.2:1, variable 16.4:1 (std. on One-Ton Mighty Max, opt. on others)		
Turning Circle, Curb to Curb (ft./m.)	Short Bed—35.4/10.8 Long Bed/MacroCab—38.7/11.8		
BRAKES			
Front Vented disc	Rear Self-adjusting drum		
Diameter Front/Rear (in.)	10.1/10.0		
Total Brake Swept Area (sq. in.)	323		
ELECTRICAL SYSTEM			
Battery	12-volt, maintenance-free		
Ignition System	Electronic		
Alternator Rating (amps)	45		
FUEL SYSTEM			
Type Fuel Required	Unleaded (RON 91)		
Fuel Pump Type	Mechanical		
Fuel Tank Capacity (U.S. gal.)	Short Bed—13.7 Long Bed/MacroCab—18.2		
WHEELS & TIRES			
Wheel Size and Type	14 x 6JJ, steel wheels	14 x 6JJ, spoker type (Sport & SPX)	
Tire Size and Type	Mighty Max—P195/75R14 steel-belted radial tires MacroCab, Sport, SPX MacroCab—P205/75R14 steel-belted radial tires		
Spare Tire Size and Type	LT195/75D14	One-Ton LT195/75R14 Radial	
FUEL ECONOMY FIGURES			
Model	Engine/Trans.	Fed. Est. City	Fed. Est. Highway
Mighty Max	2.0/4A	23**	26**
Mighty Max	2.0/5M	23**	28**
MM One Ton	2.6/4A	20**	22**
MM One Ton	2.6/5M	20**	25**
SPX/MM Sport	2.6/5M	20**	25**
MM Macrocab	2.6/5M	20**	25**

\*For complete details, ask your salesperson for a copy of the limited warranty.

\*\*These figures are estimates only, provided by the U.S. Environmental Protection Agency (EPA).





**Mitsubishi. Suddenly, the obvious choice.™**

