

FORD FAIRMONT AND FAIRMONT GHIA

**NOW WITH
SMARTLOCK
SECURITY
SYSTEM.**



HAVE YOU DRIVEN A FORD...LATELY?



FORD FAIRMONT AND FAIRMONT GHIA

**NOW WITH
SMARTLOCK
SECURITY
SYSTEM.**



HAVE YOU DRIVEN A FORD...LATELY?



A P P R O A C H W I T H C O N F I D E N C E .

Advancement in life is measured by the quality and importance of the decisions you make, both personal and professional. One of the most important is your choice of car.

When you've earned the right to ask for something more, you've earned the right to drive Fairmont Ghia.

The Ghia badge is a symbol of automotive excellence long recognised and valued by discerning drivers. Because any Ford vehicle that proudly displays the Ghia crest is acknowledged as being the best of its kind.

When your decisions reflect your appreciation of value as well as quality, Fairmont Ghia will naturally play a prominent part in your thinking.

Today's Fairmont Ghia not only maintains the prestige pedigree of cars with that name, it further refines its reputation for luxury driving.

A N E X E C U T I V E P A C K A G E .

Fairmont Ghia is brilliantly balanced to satisfy both the driver in you and the seeker after luxury. Its road performance is enhanced by a new four litre multipoint electronic fuel injected engine. And if even that is not enough, the ultimate power of Ford's V8 is available as an extra cost option.

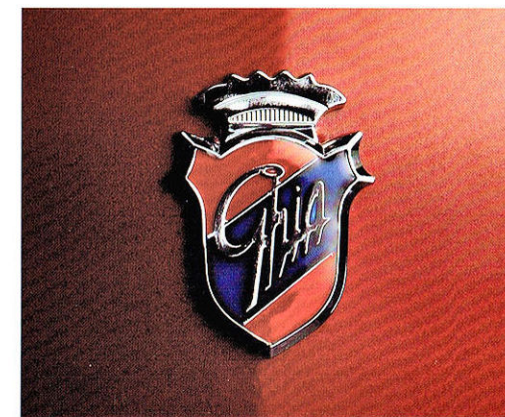
To handle that power there is a suspension system so responsive, it has won praise from even some of Australia's severest critics. And there are improved safety features including special seat belt lockers, strengthened body pillars and Ford's sophisticated Anti-lock Braking System fitted as standard equipment.

Whilst interior comforts that put Fairmont Ghia into the luxury class include such features as leather trimmed upholstery and premium sound system with optional CD player.

The demands made on today's executive are extraordinary. So it is only fair that such a person should be able to demand an extraordinary car: Fairmont Ghia.

T H E O U T S I D E E D G E .

Presentation is just as important in a prestige motor car as it is in business. And Fairmont Ghia well



and truly looks the part. The low profile bonnet, concealed drip rails and flush-mounted glass are all aids to a design that cuts briskly and efficiently through the air. And to keep intrusive noise to a minimum there are design revisions such as new body and door seals, thicker front and side glass and recessed windscreen wipers.

Cast your eye over appearance-enhancing features like colour-coded mirrors and grill, pin striping, colour-keyed body side protection mouldings and bumpers, tinted side and rear glass, sports styled BBS alloy wheels and, of course, the exclusive Ghia badge.

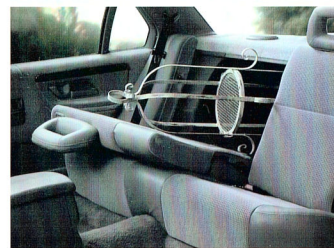




LUXURY ON THE INSIDE .

Fairmont Ghia treats both driver and passengers to a level of comfort and luxury that assures you arrive at your destination relaxed and ready for business - even if that business is pleasure. First amongst its features is sheer room to stretch out and get comfortable. Interior trim is co-ordinated to complement the exterior colour and includes classic materials such as

genuine wood and leather. Seating is in a class by itself, deeply cushioned yet supportive, with the timeless feel of leather trim combined with luxurious 'Dresden' velour fabric. The front seats are of sporting design with 'see-through' head restraints. There are generous provisions for adjustment of the driver's seat, allowing changes to fore and aft position, seat height, back rest recline and adjustable lumbar support.



60/40 split fold rear seat helps accommodate awkward boot loads.

Rear seats feature a pull-down centre armrest and a 60/40 split to allow accommodation of exceptionally large boot loads whilst still carrying one or two passengers. Rear passengers also enjoy the comforts of leather trim and head restraints. The boot itself is of capacious proportions with carpeted side and floor panels and a wide opening that extends down to bumper height for easy loading.



I N T H E
D R I V E R ' S S E A T .

This is a truly commanding position, with instruments and controls all close at hand but laid out without clutter. Immediately before you, a steering wheel encased in leather adjusts for rake and reach to give the optimum driving position. Built into the wheel are switches for cruise control allowing you to maintain pre-selected speeds on the highway.

In the instrument panel, there's quick and easy-to-read analogue display. It features all large speed and tachometer dials surrounded by gauges for fuel, oil pressure, engine coolant temperature and battery voltage. In a strip below the instrument cluster are warning lights for nine separate mechanical functions.

Left of the central binnacle is the digital clock/trip computer display that enables you to monitor fuel consumption, average speed and distance to empty.

The computer also emits an audible warning when fuel is low. When selected, this display shows a clock with day, date and time.

A C H A N G E I S I N
T H E A I R .

Alongside the trip computer is the automatic climate control that maintains a specific selected temperature inside. This can also display the ambient

temperature. Air conditioning is standard and keeps the atmosphere fresh as well as rapidly demisting windows in damp or humid conditions. Other convenience features include power mirrors, windows and door locks, remote fuel and boot opening and intermittent wipers.

For entertainment, a sophisticated Premium Sound System is included. The heart of the system is an Alpine AM/FM stereo radio cassette player



Studio quality, Premium Sound System.



Computer monitored, automatic climate control.

featuring Dolby, music search auto-scan memory storage and dynamic speakers for all-

round sound.

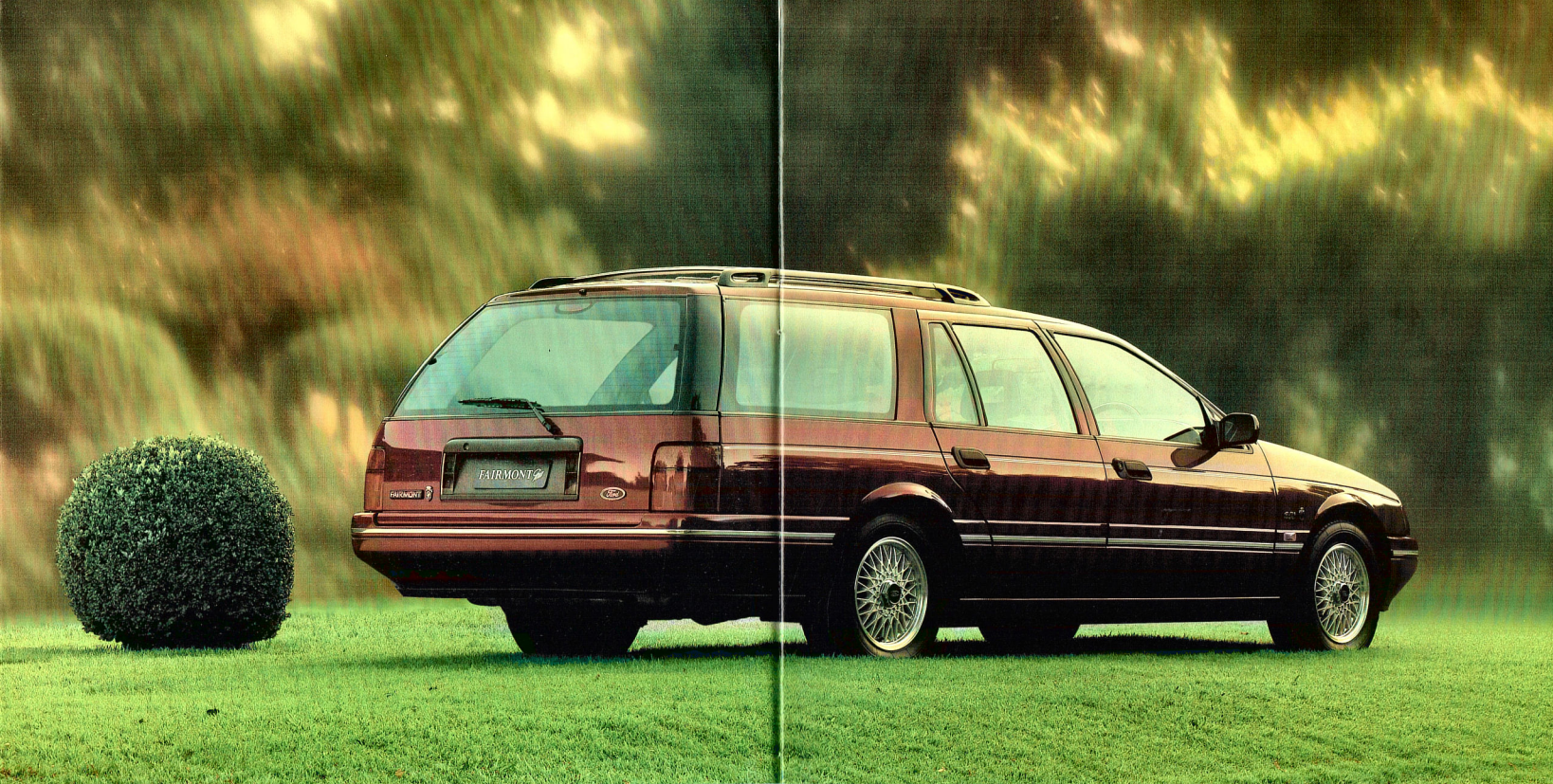
The unit is protected by security coding that renders it useless to thieves. It offers studio quality sound with a 260 Watt output through nine individual speaker elements, including satellite tweeters and

sub-woofer. The amplifier and speakers have been specially developed to suit the vehicle's acoustic profile for optimal sound performance.

Finally, the power antenna is automatically operated when the radio is in use.

True music lovers though will add the optional state-of-the-art CD player with boot-mounted remote changer.

The Premium Sound System has control switches and circuitry included to enable the CD player to be fitted later if desired.



L U X U R Y A T L E N G T H .

The Fairmont Ghia wagon features virtually all the luxury and appointments of the sedan but with the space and versatility you need to accommodate large loads.

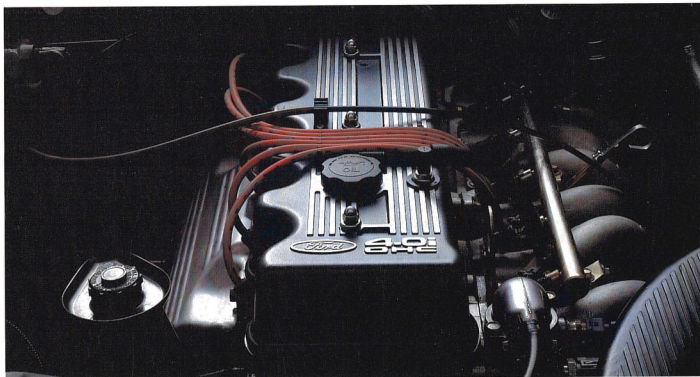
Up front there's bags of room for five passengers while in the rear there's 1466 litres of room for bags. Utilise the 60/40 split rear seat and you can increase



Fairmont Ghia wagon makes loading and carrying cargo easy.

your load space and still carry one or two rear passengers. Or fold the whole back seat flat for 2622 litres of cavernous cargo area. Carpets throughout the rear area help protect your precious cargo and thanks to 'Hotchkiss' rear suspension, which has no intrusive suspension towers, the entire area is virtually flat and usable - even the spare wheel, brace and jack are hidden away beneath the floor.

The tailgate lifts easily on twin gas struts to make a high, wide opening for easier loading. And built into the tailgate is a wiper/washer that automatically activates when the front wipers are on and reverse gear is selected to give a clean, clear view when reversing in the wet. For extra power to go with the extra space of your wagon, Ford's five litre V8 is an extra cost option available with automatic wagons.



4.0 MULTI-POINT EFI.

EXECUTIVE POWER.

As you'd expect, both Fairmont and Fairmont Ghia are equipped with engines that deliver performance specifications as impressive as their accommodation features.

The new four litre 6 cylinder engine is equipped with an alloy

head, overhead camshaft and multipoint electronic fuel injection. It's designed to produce 148kW of power at 4500 rpm and 348 Nm of torque at 3750 rpm. While this may be the most powerful six cylinder engine ever offered with Fairmont, it's the smooth and quiet way in which the power is produced that's so impressive. That smoothness is the result of a revised combustion chamber plus significant advances in piston and valve technology. These developments

Bore & stroke mm	92.26 x 99.3
Cylinder head	OHC Aluminium alloy
Displacement cc	3984
Compression ratio	8.8:1
Fuel injection	Multipoint
Fuel System	Elect. fuel inject. controlled by EEC 4 Engine Management System
Fuel	Regular Unleaded
Max Power DIN kW/rpm	148/4500
Max Torque Nm/rpm	348/3750

help the engine breath better resulting in faster, more effective gas flow.

To keep the engine operating at peak efficiency, and with optimum fuel efficiency, Ford's EEC4 Engine Management System incorporates a single highly advanced micro-processor that controls both engine and automatic transmission. This

system, known as Integrated Powertrain Control, uses a single chip to reduce electronic complexity and increase reliability. The end result is the co-ordinated monitoring and control of sixteen important engine functions, including fuel/air mixture, air intake and coolant temperature, fuel flow and ignition timing.

THERE'S NO SUBSTITUTE FOR V8 POWER.

For power without compromise, no engine



5.0 LITRE V8.

delivers in quite the way a V8 does.

And because Fairmont and Fairmont Ghia are built for driving pleasure, V8 performance is available on request. Fitted as an extra cost option, the 5 litre Falcon V8 engine is the inheritor of a proud tradition of Ford V8s.

And this engine is a worthy successor to those illustrious predecessors.

Equipped with Sequential Multipoint electronic fuel injection, which is sequenced with engine valves to inject fuel at precisely the right moment, the V8 is able to generate a stirring 165kW at 4500 rpm. With tremendous torque figures of 388Nm at 3000 rpm.

It is a product of technical excellence that delivers its energy smoothly and effectively. It features single belt accessory drive, roller tappets and aluminium

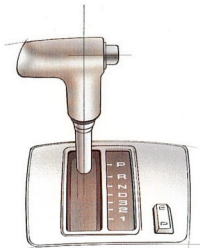
Bore & stroke mm	101.6 x 76.2
Cylinder head	Push-rod cast iron
Displacement cc	4942
Compression ratio	90:1
Fuel injection	Sequential multipoint
Fuel System	Elect. fuel inject. controlled by EEC 4 Engine Management System
Fuel	Regular Unleaded
Max Power DIN kW/rpm	165/4500
Max Torque Nm/rpm	388/3000

pistons. And the EEC 4 engine management system monitors and controls many of the engine's vital functions to help make it one of the most fuel-efficient V8s ever. The results will delight even those most concerned about consumption.

Efficiency is also at the heart of the exhaust system design. A semi-

dual layout is utilised featuring 63mm pipes to reduce restriction. The system is constructed of long-lasting stainless steel and finishes with the flourish of a chrome plated tailpipe.

No other engine has the ability to seemingly shorten distances, flatten hills or make light work of a tow load like a V8. And no other car combines the business-like performance of a V8 with precise handling and luxury appointments like Fairmont and Fairmont Ghia.



TRANSMISSION REPORT .

Whichever engine you choose, Ford's advanced 4-speed electronic automatic transmission is standard. Designed, developed and built here in Australia, this electronically-controlled T-bar transmission offers the choice of selecting either power or economy modes. Superbly quiet in operation, this 4-speed transmission is also economical, thanks in part to the lock-up clutch in the torque convertor. Its silky smoothness is extraordinary, with changes between gears being virtually imperceptible.

IMPECCABLE BEHAVIOUR .

Fairmont and Fairmont Ghia both benefit from a steering and suspension system that gives a smooth and comfortable ride with handling characteristics that are precise and predictable.

Both sedans and wagons feature suspensions with carefully chosen spring rates and nitrogen-charged gas shock absorbers. In addition, upper and lower rear suspension bushes and mountings are designed to contribute towards a smooth ride and a quiet, durable suspension.

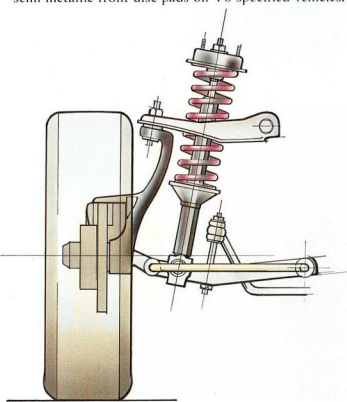
The front suspension features the sophisticated short and long arm, long spindle (SLALS) system. It is built for strength and durability, yet also offers smooth and confident road holding.

Fairmont and Fairmont Ghia sedans are fitted with a trusted and reliable Watts Link rear suspension that produces precise and predictable road manners and outstanding stability whilst towing.

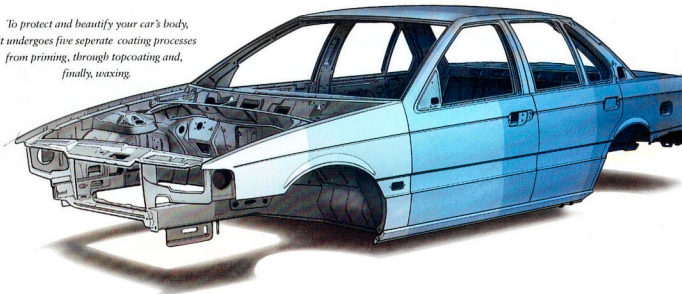
Fairmont and Fairmont Ghia wagons retain the proven Hotchkiss rear suspension designed to cope with the extra loads to which a wagon is subjected.

The power-assisted rack and pinion steering offers excellent 'feel' and sharp responses from precisely balanced camber and castor geometry and a quick 18.5 to 1 steering ratio. Fairmont Ghia features a traction-enhancing limited slip differential.

Fairmont and Fairmont Ghia also offer the security and stopping power of power-assisted four-wheel disc brakes, with a dual diaphragm booster and semi-metallic front disc pads on V8 specified vehicles.



To protect and beautify your car's body, it undergoes five separate coating processes from priming, through topcoating and, finally, waxing.



WHEN YOU'VE GOT TO TOW .

Fairmont and Fairmont Ghia make ideal towing vehicles. Whilst you enjoy the comfortable interior, you can pull up to 2100kg of boat, caravan, horse float or trailer.

PRETTY, TOUGH PROTECTION .

To provide the finishing touch to Fairmont and Fairmont Ghia's body, five separate coating processes are applied. The entire body is electro-chemically cleaned and prepared for painting.

The vehicle is dipped in primer, then a second primer coat is applied robotically to ensure the most effective coverage.

The topcoat enamel is also applied by robot. Finally, a rust-proofing wax is applied.

But if you'd like an even finer finish, prestige paintwork colours are available at no extra cost.

All this care in body finishing does more than give your car looks worthy of its abilities.

It also protects your investment. In fact, the body treatment does such a good job Ford offers a five year warranty against perforation corrosion.



Ford has always had an ongoing commitment to continuously improving vehicle safety.

Over successive generations of vehicles, Ford has incorporated an increasing number of safety features into Fairmont.

Primary safety features include engines with sufficient power not to be found wanting when extra

response is called for. Steering and suspension systems that are precise and predictable. Powerful braking systems, that include four wheel discs and now an Anti-lock Braking System.

But because, even though it may not be you or your car's fault, collisions do occur, Fairmont's secondary safety features are so important.

The list includes integral vehicle crumple zones and strengthened passenger compartments, inertia reel seat belts with reinforced mountings and belt lockers.

In fact, Ford takes safety so seriously that Fairmont and Fairmont Ghia not only meet but significantly exceed many of the safety standards laid down.

to give you greater control over your vehicle in extreme or emergency braking situations.

To prevent your brakes from locking, sensors at each wheel are connected to a microprocessor which detects when a wheel is about to lock.

When triggered, a system of electronically-controlled valves between the brake booster and the wheel open and close several times per second to enable maximum braking power just

so hazards can be more easily avoided by a combination of braking and steering.

The sophisticated ABS fitted as standard equipment to Fairmont Ghia has software specially programmed for Australian road conditions, including a special 'deep pulse' program designed for gravel roads.

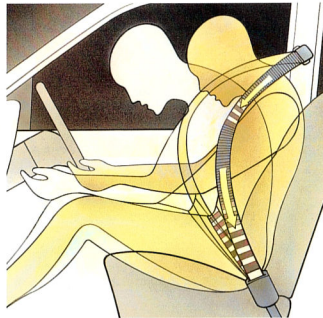
The system is designed to operate effectively even when different wheels are on different types of surface; a situation frequently encountered when passing on-coming vehicles on narrow country roads.

**IT'S TOUGH
AT THE TOP.**

The passenger safety cage on today's Fairmont has been significantly strengthened by improving its roof crush strength and by making the roof a structural member of the passenger compartment.

An epoxy resin composite has been used to reinforce both the A and B pillars of the vehicle, while the fitting of thicker front and side glass strengthens the area still further.

Fairmont and Fairmont Ghia can withstand a force of 32 kN (over 3 tonnes) in testing for the US roof crush resistance standard FMVSS 216.



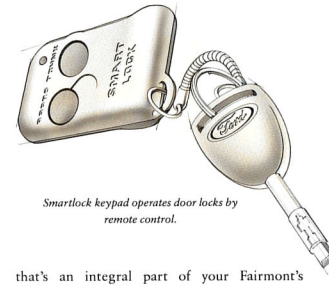
Belt-locker device prevents payout of seat belt webbing under extreme conditions.

**MAJOR ADVANCES IN
VEHICLE SECURITY.**

So that Fairmont and Fairmont Ghia attract no more than admiring looks from persons other than the owner, the latest technology has been applied in the area of vehicle security.

Ford believes the best security system is the one you don't have to remember to switch on.

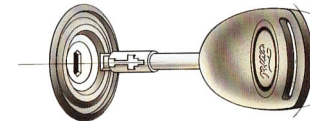
So Ford developed *Smartlock*, a security system



Smartlock keypad operates door locks by remote control.

that's an integral part of your Fairmont's operating systems. It works by automatically immobilising the vehicle when the ignition key is removed.

Before it will enable the engine to start, the *Smartlock* computer module demands a set of precise codes that are only released by the high security 'Tibbe' ignition key.



Doors, ignition and boot are all protected by high security 'Tibbe' locks.

So even the most determined thief would find it virtually impossible to start the car.

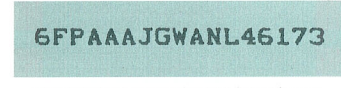
Also, the profile and barrel of the ignition lock have been specifically designed to frustrate even the most sophisticated attempts at theft.

Recessed door lock buttons help to guard against unauthorised entry.

For your convenience, *Smartlock* also provides keyless access to the vehicle via a remote control keypad which operates the standard power door locks and boot lock.

**IDENTIFICATION
CODING OF VEHICLE
COMPONENTS.**

Every Ford is allocated a unique Vehicle Identification Number (VIN) which distinguishes the vehicle from all others on the road.



The Vehicle Identification Number (VIN) distinguishes your vehicle from all others on the road.

Major vehicle components are permanently marked with the VIN as another way of deterring theft.

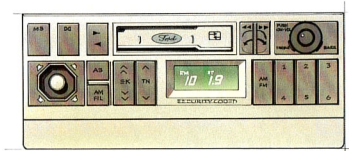
**SECURITY
CODED RADIO.**

The vehicle's radio and cassette player is protected by another Ford anti-theft measure.

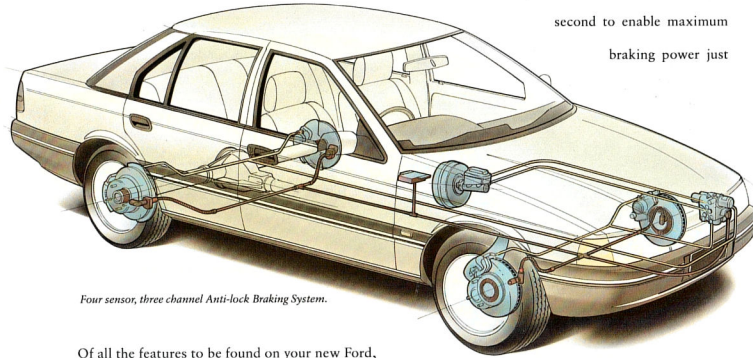
A special security code renders the unit useless to thieves.

You'll discover that the security systems in the Fairmont and Fairmont Ghia represent more than the latest technology. It's technology applied in a most intelligent way.

See your Ford Dealer soon for a detailed presentation and demonstration.



The radio and cassette player is protected by a programmed security code rendering the unit useless to thieves.



Four sensor, three channel Anti-lock Braking System.

Of all the features to be found on your new Ford, the ones concerning safety are the ones we hope you never have to think about.

But if you do, it's good to know that the engineers at Ford have done a lot of thinking for you. And here are some of our latest thoughts.

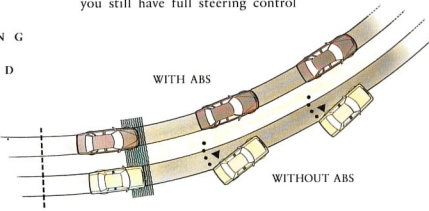
**ANTI-LOCK BRAKING
SYSTEM. IMPROVED
CONTROL FOR
GREATER SAFETY.**

Standard equipment on Fairmont Ghia. Optional at extra cost on Fairmont.

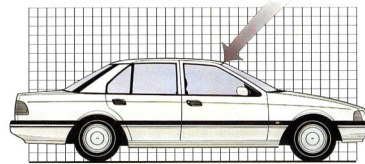
Fairmont Ghia's standard four sensor, three channel Anti-lock Braking System (ABS) is designed

short of the point at which lock-up will occur, to be applied to each wheel individually.

Not only does ABS mean shorter braking distances in most circumstances, more importantly it means you still have full steering control



Demonstrates reactions of vehicle equipped with and without ABS in a potential brake lock-up situation.



Epoxy resin reinforcement of A and B pillars plus thicker front and side glass has strengthened passenger compartment.



FAIRMONT - SETTING
THE STANDARD.

The latest model Fairmont is a vehicle so stylishly crafted, so impressively equipped and so competitively priced, it's hard to gauge which one of its many aspects is the most attractive.

Both the Fairmont sedan and wagon begin to impress the moment you lay eyes on them.

Attractive exterior lines that extend to the turbo blade alloy wheels, owe as much to the science of aero-



Driver's seat adjusts for recline and height.



Belt-locker device prevents payout of seat belt webbing in extreme circumstances.

dynamics as they do to a sense of style.

Air flows over, under and around the vehicle contributing to excellent handling characteristics, low wind noise and surprising fuel economy. Inside, today's Fairmont offers a new level of luxury. Driver and passengers are accommodated in spacious surroundings and supported on deeply comfortable seats, with improved lateral support for the front buckets.

Interior trim is an attractive and long-lasting luxury velour in shades that allow true co-ordination of interior and exterior colour schemes.

Convenience features have never been so numerous, with refinements such as automatic climate control, trip computer, cruise control, power mirrors, windows and door locks finding a place in Fairmont's standard specifications.

ABS, Alpine Premium Sound System and CD player are among the list of extra-cost options that are



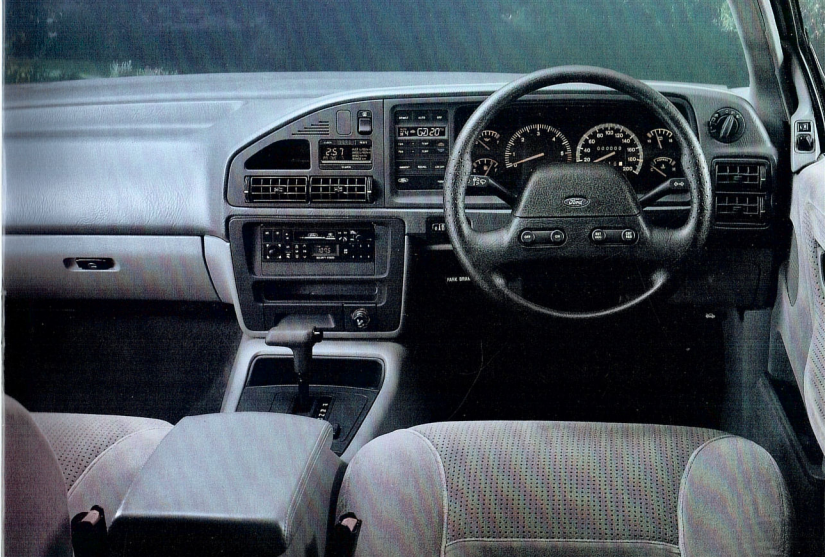
Multi-function digital trip computer and clock.



Cruise control for relaxed highway and country driving.

available. At night, Fairmont shows the way with its illuminated entry system, where a light around the driver's side door key hole and the interior lights switch on to assist entry whenever a front door handle is pulled.

With so much equipment listed as 'standard' for the Fairmont, even before you take your first drive in it you know that today's Fairmont is a car that is anything but standard.





Fairmont with Touring Pack 2, and 16" wheels and tires.

STYLING
AND
SUSPENSION
OPTIONS.

Your new Ford Fairmont or Fairmont Ghia is

engineered to perform to exacting standards of ride and road holding.

But for the driver who wants to equip his new car to perform with even sharper handling and quicker responses, a specialised suspension option pack is

available to enhance your new car's touring capabilities.

A Towpack and electric sunroof kit are also available. These option packs are specifically made for Ford Fairmont and Fairmont Ghia from high quality materials.

And because they are installed when your new car is being built you're assured of proper fit and compatibility.

And all Ford option packs are fully covered by the Ford Express New Vehicle Warranty.

T O U R I N G P A C K 1 .

Outstanding comfort and responsive handling are combined in the Fairmont and Fairmont Ghia. Touring Pack 1, using special springs, shock absorbers, bushes and front stabiliser bar, offers a similar combination but with more emphasis on responsive handling.

It also provides a lower ride height.

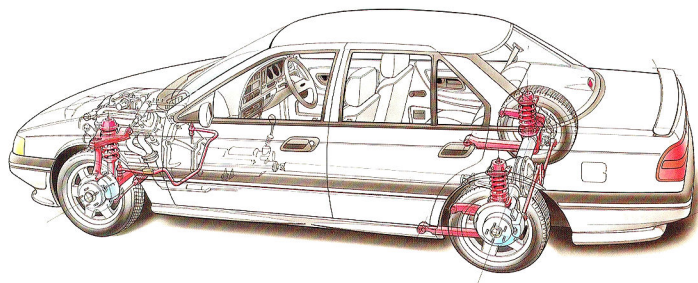
T O U R I N G P A C K 2 .

All the features of Touring Pack 1 plus body styling package.

Includes side skirts, front and rear spoilers and rear apron. Improves aerodynamic performance and gives sensational looks to your new car.

S U N R O O F .

Precision crafted electric glass sunroof fully imported from Germany. Operates as a tilted vent to improved ventilation or partially or fully open to enjoy the great outdoors. Automatic pop-up wind deflector reduces wind noise and buffeting.



Touring pack suspension.

1 6 " W H E E L S A N D T Y R E S .

Aggressive 16" x 7" five spoke alloy wheels fitted with high performance Michelin 225/50 ZR 16 tyres.

Designed to fully exploit the handling capabilities of Touring Packs, while adding a bold new style to your vehicle.

C A R A L A R M .

Sophisticated and highly sensitive alarm system designed to protect you new Ford.

Features include remote active arming, auto arming selectable, auto disarming, re-arming if no entry after 60 seconds, starter cut out, shock detector, L.E.D. display. Remote control of the central locking system is also included.

C L A S S I I

T O W P A C K .

2100kg rated capacity. Features Hayman Reese towbar and hitch, trailer wiring kit, revised turn signal flasher, brake pads and oil cooler.



Electric remote control external mirrors.



'Tibbe' high security door locks.



Digital trip computer and clock.



Power window controls.

T H E F E A T U R E D A T T R A C T I O N S .

As you've read, Fairmont and Fairmont Ghia extensive lists of standard equipment.

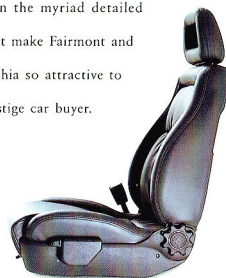
The long list of standard features that is contained on either car, without having to add a single option, puts both cars in a class of their own.

And the extra cost options you can select, simply add a final gleam to an already shining example of automotive craftsmanship.

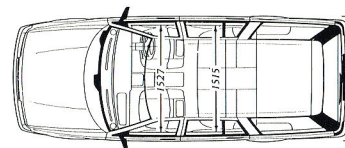
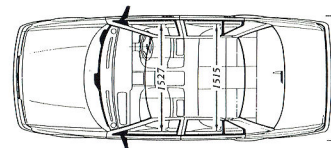
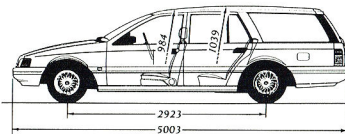
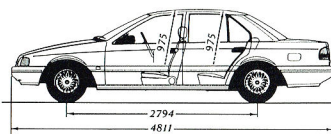
In every department Fairmont and Fairmont Ghia stand apart. In performance, with smooth six

or V8 capability. In ride and handling, with superb suspension systems. In luxurious interior comfort.

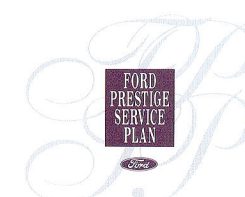
And in the myriad detailed touches that make Fairmont and Fairmont Ghia so attractive to today's prestige car buyer.



Full leather seating is available as an option on Fairmont Ghia sedan at no extra cost.



All dimensions are shown in mm.



F O R D P R E S T I G E S E R V I C E P L A N . E X C L U S I V E L Y Y O U R S .

One of the many rewards of owning a prestige vehicle like Fairmont Ghia is entitlement to the Ford Prestige Service Plan, which takes effect from the date you purchase your new car, and provides assistance and peace of mind for 3 years.

The Ford Prestige Service Plan is part of Ford-care and is exclusive to owners of Ford prestige vehicles. Among the many benefits offered are:

- 24 hr Emergency Roadside Assistance, in the event of mechanical breakdown.
- Towing and vehicle recovery service.
- Free emergency accommodation for up to 5 people.
- Free emergency rental car assistance.
- Free medical advice.

Urgent message relay anywhere in Australia, including assistance with cancellation or re-booking of any pre-arranged travel and accommodation.

In the event of a mechanical breakdown, these special services can be accessed from anywhere in the country, 24 hours a day, 365 days a year via a toll-free hotline. The number is clearly shown on your personal owner identification card.

You will receive your card with your Ford Prestige Service Plan introduction material sent to you after purchase. Keep it safe and always take it with you when you drive.

The card carries individual details about your vehicle and gives you access to all the services provided by the Ford Prestige Service Plan.

A N E X T R A S P E C I A L S E R V I C E .

All Ford owners are special to us. But as the owner of a new prestige vehicle like a Fairmont Ghia you're entitled to expect considerations that reflect your valued status.

So to assist you in arranging routine servicing of your vehicle, the Ford Prestige Service Plan provides a central booking facility allowing access to any Ford dealership you choose.

And to ensure we're doing our job properly, you will receive a follow-up call after your service has been carried out to make certain you are fully satisfied with the work.

S E R V I C E L O A N V E H I C L E .

If your Fairmont Ghia has to spend more than 24 hours at the servicing dealership in order to carry out any warranty repairs, a free loan vehicle will be available for your use until your car is ready.

F O R D C A R E .
O U R
C O M M I T M E N T
T O C U S T O M E R
S A T I S F A C T I O N .

FORDcare

Fordcare is a whole range of programs, products and services designed to make Ford owners the most satisfied motor vehicle owners in Australia.

Fordcare starts when you enter a Ford dealer's showroom, it's there when you take delivery of your new Ford and it continues for the life of the vehicle.

That means first class service for you at all times, and nothing less than the best for your Ford from our extensive network of authorised Ford dealers.

As motor vehicles become more sophisticated and technically advanced, specialised care and maintenance become more vital.

Fordcare provides the technical equipment and expertise to keep your Ford operating in peak condition. The well-being of your Ford is supported by these additional warranties:

T H E F O R D
2 4 M O N T H /
5 0 , 0 0 0 K M
E X P R E S S N E W
V E H I C L E
W A R R A N T Y .



Covers your Ford against defects in factory materials or workmanship for the first 24 months or 50,000 km - whichever occurs first. When fitted at time of vehicle purchase, Ford Approved Accessories are also covered by the Ford 24 month/50,000 km Express New Vehicle Warranty.

F I V E Y E A R
P E R F O R A T I O N
C O R R O S I O N
W A R R A N T Y .

Covers the original vehicle's body against perforation corrosion for the first five years of its life.

L I F E T I M E S E R V I C E
W A R R A N T Y .



Covers the majority of part replacements, including labour, carried out by your Ford dealer after

the expiration of the initial Ford 24 month/50,000 km Express New Vehicle Warranty. It means you will only ever pay once for such repairs under normal driving conditions.

L I F E L O N G P A N E L
W A R R A N T Y .



Covers replacement of outer body panels against perforation corrosion for the life of the vehicle.

Further information on these warranties may be obtained from your Ford dealer.

F O R D C U S T O M E R
A S S I S T A N C E
C E N T R E .



We're always happy to hear from you and you will find our Customer Assistance Representatives responsive to your needs. Our Representatives can assist with any enquiry that goes beyond the scope of your Authorised Ford Dealer.

Customer Assistance Centre.

Phone 008 333 306 (TOLL FREE),
in Melbourne phone 359 7023.

FORDcare

All optional equipment referred to in this brochure is available at extra cost unless otherwise stated.

This brochure is designed to provide you with a general introduction to the Ford Products (including available optional equipment) referred to, and should be read in conjunction with the latest specification sheet. Because of changes in conditions and circumstances Ford* reserves the right, subject to all applicable laws, at any time, at its discretion, and without notice, to discontinue or change the features, designs, materials, colours and other specifications and the prices of its products, and to either permanently or temporarily withdraw any such products from the market without incurring any liability to any prospective purchaser or purchaser. The latest specification sheet should be referred to for information on the availability, ordering and use of optional equipment. Always consult an Authorised Ford Dealer for the latest information with respect to features, specifications, prices, optional equipment and availability before deciding to place an order.

*FORD MOTOR COMPANY OF AUSTRALIA LIMITED.
A.C.N. 004 116 223. Registered Office: 1735 Sydney Road,
Campbellfield, Victoria 3061, Australia. Printed October, 1992.



HAVE YOU DRIVEN A FORD...LATELY?



FORDcare

All optional equipment referred to in this brochure is available at extra cost unless otherwise stated.

This brochure is designed to provide you with a general introduction to the Ford Products (including available optional equipment) referred to, and should be read in conjunction with the latest specification sheet. Because of changes in conditions and circumstances Ford* reserves the right, subject to all applicable laws, at any time, at its discretion, and without notice, to discontinue or change the features, designs, materials, colours and other specifications and the prices of its products, and to either permanently or temporarily withdraw any such products from the market without incurring any liability to any prospective purchaser or purchaser. The latest specification sheet should be referred to for information on the availability, ordering and use of optional equipment. Always consult an Authorised Ford Dealer for the latest information with respect to features, specifications, prices, optional equipment and availability before deciding to place an order.

*FORD MOTOR COMPANY OF AUSTRALIA LIMITED.
A.C.N. 004 116 223. Registered Office: 1735 Sydney Road,
Campbellfield, Victoria 3061, Australia. Printed October, 1992.



HAVE YOU DRIVEN A FORD...LATELY?



FORD FAIRMONT AND FAIRMONT GHIA

**NOW WITH
SMARTLOCK
SECURITY
SYSTEM.**

FORDcare

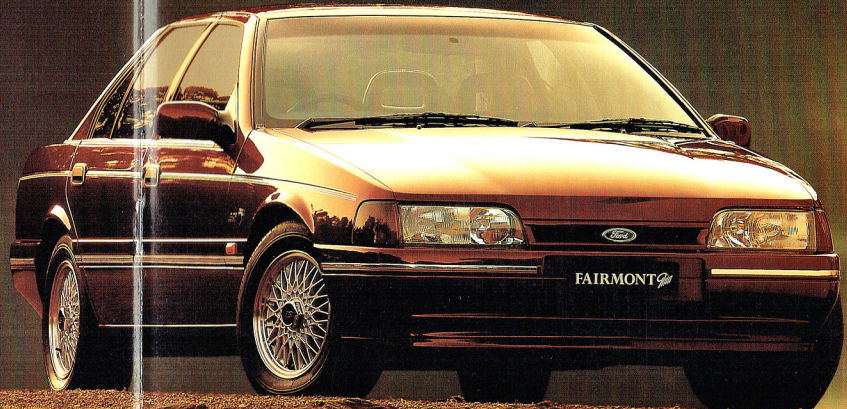
All optional equipment referred to in this brochure is available at extra cost unless otherwise stated.

This brochure is designed to provide you with a general introduction to the Ford Products (including available optional equipment) referred to, and should be read in conjunction with the latest specification sheet. Because of changes in conditions and circumstances Ford* reserves the right, subject to all applicable laws, at any time, at its discretion, and without notice, to discontinue or change the features, designs, materials, colours and other specifications and the prices of its products, and to either permanently or temporarily withdraw any such products from the market without incurring any liability to any prospective purchaser or purchaser. The latest specification sheet should be referred to for information on the availability, ordering and use of optional equipment. Always consult an Authorised Ford Dealer for the latest information with respect to features, specifications, prices, optional equipment and availability before deciding to place an order.

*FORD MOTOR COMPANY OF AUSTRALIA LIMITED.
A.C.N. 004 116 223. Registered Office: 1735 Sydney Road,
Campbellfield, Victoria 3061, Australia. Printed October, 1992.



HAVE YOU DRIVEN A FORD...LATELY?



HAVE YOU DRIVEN A FORD...LATELY?

