

2002 BUICK LESABRE



Peace of mind that
leads to one conclusion.



The highway
is going your way.



It's safe to say
you'll enjoy the ride.

Beauty. Performance. Room.
The only thing we left out is worry.



LeSabre Limited in Light Bronzest Metallic, shown with available equipment.

Enjoy your own copy of
America's #1 bestseller.

Welcome to Buick LeSabre, America's
best-selling full-size car for nine straight
years.* It's a beautifully designed,
remarkably comfortable, full-size car that
takes confidence and self-assurance
to new heights for you and your family.
And one that delivers satisfaction
to its owner with every mile traveled.

*This 205-HORSEPOWER 3800 V6—
rated one of the 10 Best Engines
of the 20th Century**—is a proven
performer. It combines smooth
manners in everyday driving and a
wealth of power when you need it.*



*The available GRAN TOURING SUSPENSION
includes specific 16" Gran Touring aluminum
wheels, performance tires and rear stabilizer
bar. It all combines to offer impressive
handling and road feel to the driver.
FOUR-WHEEL DISC BRAKES are designed
to help stop a vehicle surely and securely.
ANTI-LOCK BRAKES help you retain steering
control during hard braking. We've combined
both features in LeSabre for an added
measure of security and confidence.*

LeSabre is designed to inspire a sense of confidence, from the V6
that delivers both power and superb fuel economy — 20 mpg city,
29 mpg on the highway† — to the long wheelbase, wide track and
advanced suspension that help smooth the ride and help keep you
in control. If you want confidence, you've come to the right car.



*Should your drive wheels begin to spin as
you accelerate on a patch of ice or snow,
the full-range traction control†† system goes
to work, reducing power and modulating
the front brakes. This system works at all
speeds to help reduce wheelspin until
you regain traction.*

C O N F I D E N C E

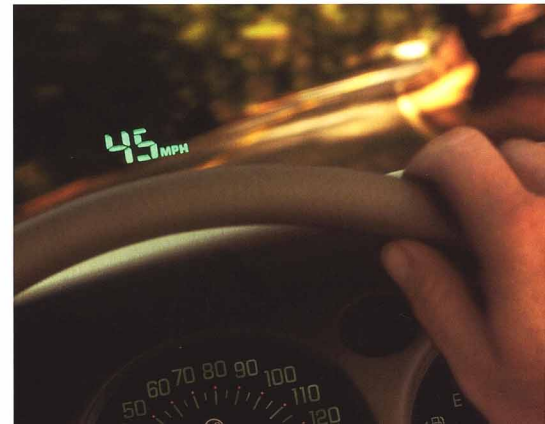
*Based on Polk large sedan segment registrations.
**Ward's AutoWorld, January 1, 2000.
†Based on 2002 EPA estimates.
††Standard on Limited, available on Custom.

It's almost impossible to throw this car a curve.

While you never know what surprises could be waiting for you around the next bend, thanks to StabiliTrak** you'll have fewer worries. When turning on slippery surfaces or in emergency situations — such as an unexpected obstacle in the road, or even a sudden gust of wind — StabiliTrak immediately reacts to actively help keep you on course. Your passengers may never feel LeSabre's StabiliTrak chassis control system at work, but you're certain to appreciate the added confidence it offers.



StabiliTrak sensors, strategically located throughout LeSabre, are constantly at work to help assure that you're traveling on your intended course. In an emergency, these sensors detect any difference between the steering wheel angle and the direction you are actually turning. StabiliTrak immediately takes corrective action by applying either the right or left front brake, as necessary, to help bring the vehicle back under control.



The Driver Confidence Package, available on Limited, includes StabiliTrak, self-sealing tires and the EyeCue® head-up windshield display. This display projects a wide array of information directly in front of you, including current speed, turn signal operation, high beam indicator and check gauge warning. All helping you to keep your eyes on the road ahead.

M O R E C O N F I D E N C E

Safety and security
some cars can only dream of. When it comes to peace of mind on the road, there is simply no substitute for the feeling that you and your family are safe and secure. That's why LeSabre has been designed with safety in mind. In fact, LeSabre offers the most standard safety features of any car in its class,* such as four-wheel anti-lock disc brakes, dual front and side-impact air bags** and remote keyless entry, which includes an instant alarm and trunk release. You can rest assured LeSabre will be there for you when you need it.



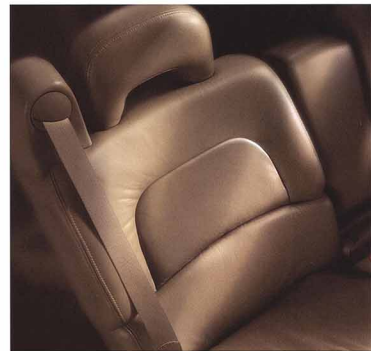
LeSabre's rigid, unitized body structure contributes to a reassuring sense of solidity, stability and a controlled ride with remarkable handling.

Beyond its strong steel skeleton and galvanized steel skin, you'll also find LeSabre equipped with many safety features that enhance both convenience and security for you and your family. Twilight Sentinel® automatically switches your daytime running lamps over to full headlamps as darkness falls. With a standard center rear shoulder and lap belt, all your rear-seat passengers enjoy equal protection. The new LATCH system of upper and lower child seat anchors is designed to help easily secure a compatible child restraint seat and give you more confidence. There's even a trunk-release handle that allows the trunk to be opened from the inside for added peace of mind.

When set at the delay position, the MOISTURE-SENSING WIPERS* activate automatically as moisture hits the windshield and increase their speed as the amount of moisture increases. This feature helps you to keep your full concentration on the road ahead.



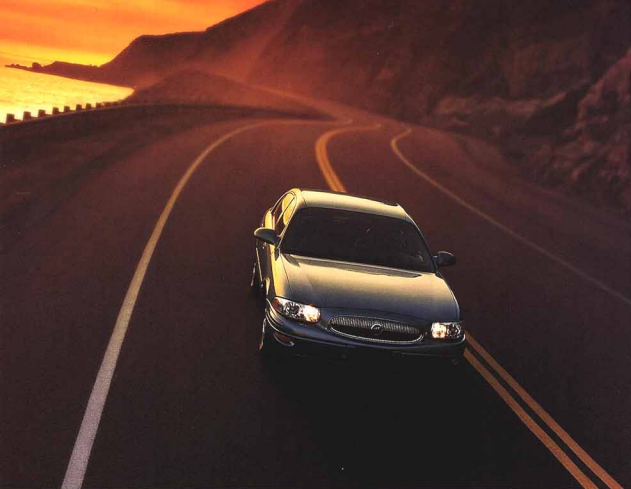
Large fold-away power outside rearview mirrors give you a good view of what's behind you. On Limited, the mirrors are heated and include a driver-side automatic dimming feature that reduces the amount of reflective glare from headlamps.



LeSabre's innovative Catcher's Mitt™ seats are designed to help absorb energy and pocket the occupant's pelvis and lower back. The self-aligning head restraints rotate forward to help reduce the head motion that may cause neck injury. (Outboard front seats only.)

*Based on 2001 competitive models, Polk large sedan segment.
**Always use safety belts and proper child restraints, even with air bags. Children are safer when properly secured in the rear seat. See your vehicle Owner's Manual for more safety information.
†Standard on Limited, available on Custom.

SECURITY



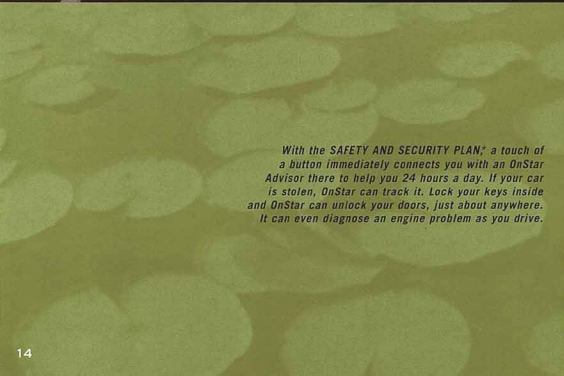
Enjoy what could be the ultimate luxury.

Cutting-edge technology. Cheerful personal attention. An unparalleled level of safety, security and information services. When you have OnStar® onboard, you have one of the world's most advanced mobile satellite/cellular communications networks at your command. Plus, a wide variety of special service and calling plans to choose from makes OnStar even more valuable and indispensable.



The available Premium Service Plan augments the Safety and Security Plan by providing access to over five million service listings, including hotels, restaurants, dealerships, hospitals and ATMs. OnStar Advisors can help make reservations, purchase tickets or get you almost anywhere you want to go. All from the comfort of your LeSabre.

*One-year OnStar Safety and Security service agreement standard on Custom models with SE package and Limited models. OnStar uses existing emergency service providers and cellular telephone and satellite technologies. Vehicle electrical system must be operating for OnStar to work. Call 1-800-DNSTAR-7 or visit www.onstar.com for system limitations and details. **Existing OnStar service agreement required. Additional usage charges apply for Personal Calling. Available in select markets. OnStar voice recognition system may not work with all voices. Existing OnStar service contract required. Advance payment of Personal Calling minutes required. Additional charges apply. Available in select markets.



With the SAFETY AND SECURITY PLAN,¹ a touch of a button immediately connects you with an OnStar Advisor there to help you 24 hours a day. If your car is stolen, OnStar can track it. Lock your keys inside and OnStar can unlock your doors, just about anywhere. It can even diagnose an engine problem as you drive.

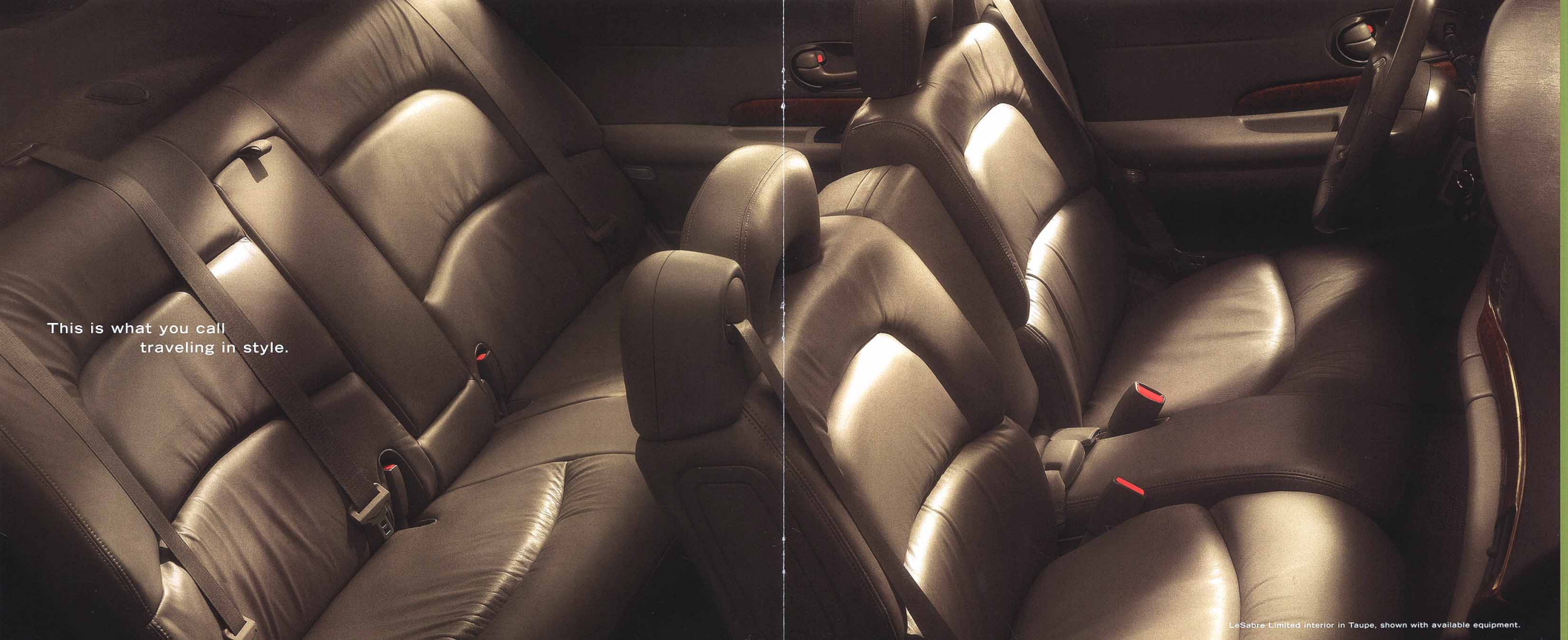


With OnStar Personal Calling,² keeping in touch with your family at home or people at work is easier than ever. Available with either plan, it connects you with a nationwide wireless service. This voice-activated system dials the number for you and your party answers through your stereo speakers, helping you to keep your hands on the wheel and your eyes on the road.

OnStar Virtual Advisor³ is an added benefit to Personal Calling subscribers, providing up-to-date information on stocks, sports scores, weather, news, even your e-mail, right in your car. It's voice-activated, so all you have to think about is driving.



M O R E S E C U R I T Y

A photograph of a car's interior, split vertically. The left side shows the back seat, and the right side shows the front seats. The seats are upholstered in a dark, textured leather. The lighting is dramatic, highlighting the contours of the seats. A vertical white line separates the two views. The text "This is what you call traveling in style." is overlaid on the left side.

This is what you call
traveling in style.

LeSabre Limited Interior in Taupe, shown with available equipment.

We take care of all the details.

The reasons why LeSabre is such a popular choice year after year become obvious the moment you take a seat inside. You see, this car has been designed to be as comfortable at the end of a long day as it is at the beginning of a long trip. Peace and quiet and an impressive ride make a big difference in making you feel good. That's why LeSabre offers a wide variety of comfort and convenience features, such as its air filtration system* that helps filter pollen and dust before it has a chance to reach you.



The storage drawer in the instrument panel is just one of TEN HANDY STORAGE AREAS located throughout LeSabre. The TEN-WAY POWER SEATS** also feature safety belts that are anchored to the seats and move with you as you make adjustments. You like things on the cool side but your front-seat passenger likes it warm? The AUTOMATIC DUAL ZONE CLIMATE CONTROL** allows you both to adjust the inside temperature to suit your style.



LeSabre's hushed interior environment helps quiet even the loudest city streets. Thoughtful touches quickly become "how did I ever do without it?" features. Generous room for six gives even large families plenty of space to stretch out. And its ample, wide-opening 18 cubic-foot trunk with valet lockout has a conveniently designed low lift-over height to help make loading simpler. You'll also appreciate the rear-seat pass-through** that helps you carry long items like skis more easily.



Available steering wheel controls allow you to adjust the radio's volume and station selection, as well as temperature settings** and standard cruise control functions, without taking your hands off the wheel.

C O M F O R T & C O N V E N I E N C E

Easy to see,
easy to reach, easy to love.



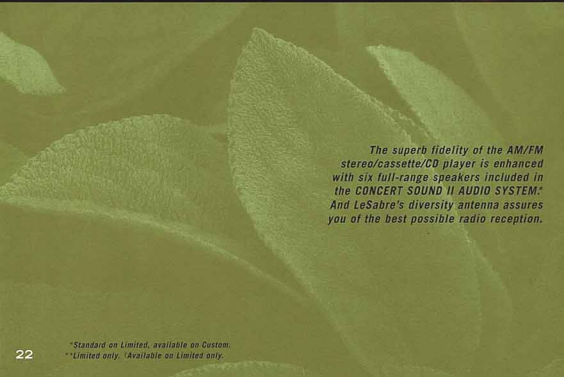


A little luxury is great.
A lot is even better.

While we think the world looks better from behind the wheel of a LeSabre, we can guarantee it feels great. The proof is all around you, from the heated leather-trimmed seats* to the Personal Choice memory settings** which automatically adjust seat and outside mirror positions, temperature and radio station settings for two drivers.



LeSabre's luxury is found in a host of other features as well, such as the available power glass sunroof† that makes getting closer to the great outdoors a breeze. The Driver Information Center* provides you with instant and average fuel economy, range, fuel used, and low tire pressure warning. And, of course, LeSabre's standard luxuries include things you've come to expect — power locks and windows, cruise control and a rear window defogger.



The superb fidelity of the AM/FM stereo/cassette/CD player is enhanced with six full-range speakers included in the CONCERT SOUND II AUDIO SYSTEM.* And LeSabre's diversity antenna assures you of the best possible radio reception.



LeSabre's available convenience console is thoughtfully designed with dual covered cup holders, a covered cell phone tray and writing surface, storage bin and two auxiliary power outlets.

Theater dimming is designed to take down the interior lights gradually after you've closed your car doors. LeSabre can also be equipped with a universal transmitter,* a three-function programmable device that can turn lights on inside your house, open your garage door and more. (Requires purchase of optional receivers.)



L U X U R Y

*Standard on Limited, available on Custom.
**Limited only. †Available on Limited only.

If you want it all, you've
come to the right address.

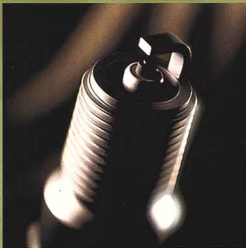


LeSabre Custom in Sterling Silver Metallic, shown with available equipment.

Quality isn't everything,
it's the only thing.

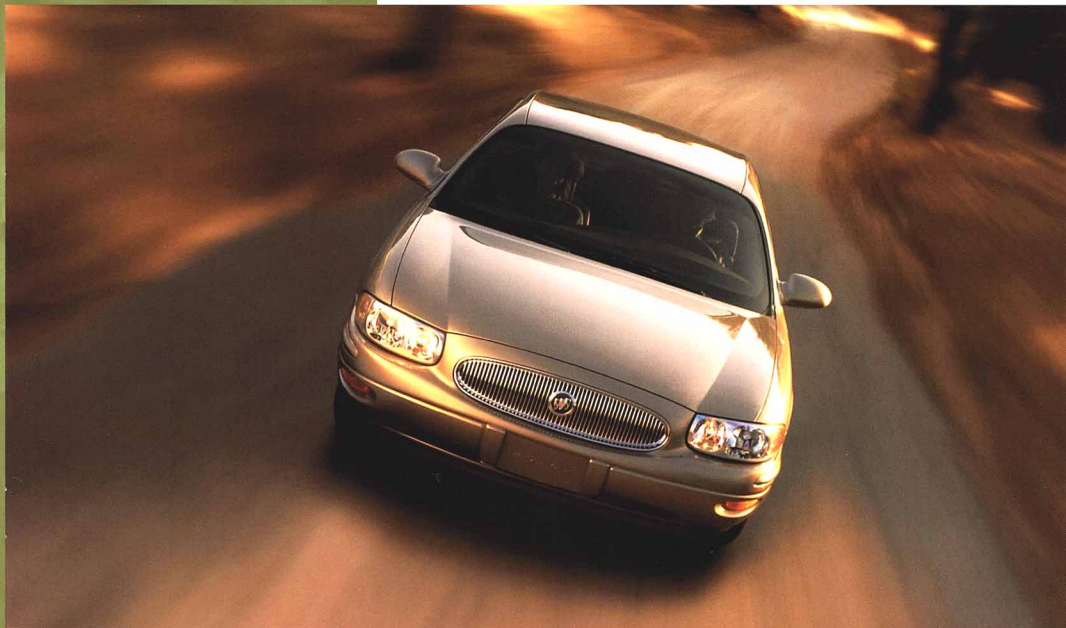
LeSabre's resumé of achievements over the years is enough to fill a book. Its reputation for value, reliability and quality is backed by numerous awards and accolades from consumer publications, industry analysts and media critics. No wonder it's been America's best-selling full-size car, nine years in a row.*

*In addition to long-life engine fluids and other quality components, LeSabre gives you the durability of PLATINUM-TIPPED SPARK PLUGS that allow you to drive up to 100,000 miles before your first scheduled spark plug replacement.***



For a full-size car, LeSabre's FUEL EFFICIENCY is remarkable, at 20 city/29 highway miles per gallon† — especially in light of its highly responsive performance.

Years of driving will pass by easily with the knowledge that you're covered by Quality Plus — a comprehensive program that assures your new LeSabre will deliver a quality experience during your years of ownership. It includes emergency 24-hour Roadside Assistance and the New Vehicle Limited Warranty†† which covers you for 3 years or 36,000 miles, whichever comes first.



QUALITY & VALUE

*Based on Polk large sedan segment registrations.
**Maintenance needs vary with different uses and driving conditions. See Owner's Manual for more information.
†Based on 2002 EPA estimates.
††Excludes normal maintenance. See your dealer for details.



Buick. It's all good.™

Completely beautiful. Beautifully complete. No matter which Buick you get into, you'll find it to be so well-equipped, inside and out, that your toughest decision may well be deciding on the color. It's why, year after year, Buicks are recognized by leading consumer publications and the automotive press for their outstanding value and desirability. It's why Buick owners are so loyal, returning to their dealer year after year. With so much going for them — and you — it's easy to see why.



Buick, the official car of the PGA TOUR, is proud to be associated with golfing great Tiger Woods and to support the Tiger Woods Foundation. Together, we're encouraging youth to dream big dreams and reach their highest potential.

B U I C K

standard and available equipment			
S	A	Available	Not available
	Custom	Limited	
Air bags			
— driver and right front passenger dual stage inflation	S	S	
— driver and right front passenger seat-mounted side impact	S	S	
Air conditioning			
— manual single zone climate control	S	—	
— automatic dual zone climate control with rear-seat outlet	—	S	
Air filtration system			
	A	S	
Arm rests			
— front-seat storage with dual cup holders	S	S	
— rear-seat fold down with dual cup holders and pass-through to trunk	—	S	
Audio systems			
— (UN6) ETR [®] AM/FM stereo with seek/scan, digital clock and cassette	S	—	
— (UN0) ETR AM/FM stereo with seek/scan, digital clock, RDS display, Theftlock [®] CD and Auto Tone Control; includes remote steering wheel controls	A	—	
— (UP0) ETR AM/FM stereo with seek/scan, digital clock, RDS display, Theftlock, cassette, CD and Auto Tone Control; includes remote steering wheel controls	A	S	
— extended range four-speaker system	S	—	
— Concert Sound II six-speaker system	A	S	
— diversity antenna integrated into the windshield and rear glass	S	S	
— carpet savers — front and rear	S	S	
— child seat anchors — upper and lower	S	S	
— child security door locks — rear doors	S	S	
Convenience Plus Features — include electronic reminder tones for ignition key, headlamps, turn signals, parking brake "on", delayed entry lighting; delayed exit lighting; theater dimming; Battery Run/Down Protection; lockout protection; delayed locking; PASS-Key [®] III passive theft-deterrent system and Twilight Sentinel [®] with daytime running lamps			
— Driver Information Center — includes trip computer, low oil, coolant, washer fluid and fuel reminders, oil life and tire inflation monitor	A	S	
Five-Passenger Convenience Console Package — includes 45/45 bucket seats, convenience console with dual cup holders, removable cell phone/writing pad tray, storage bin, leather armrest, two auxiliary power outlets and rear seat bi-level vents			
	A	A	
Inside rearview mirror			
— electrochromic-auto dimming	A	—	
— electrochromic-auto dimming with compass	A	S	
Instrumentation			
— full analog cluster with fuel, temperature and speedometer gauges	S	—	
— full analog cluster with fuel, temperature, speedometer, tachometer, low fuel indicator and Driver Information Center	A	S	
— OnStar — Custom with SE Package and Limited only	S	S	
Overhead console — includes front reading lamps on Custom; includes front and rear reading lamps on Limited			
	S	S	
Personal Choice features — includes settings for door locks, perimeter lighting and remote keyless entry security feedback			
	S	S	
— memory settings for driver seat adjustments, outside mirrors, climate control and radio presets	—	S	
Power door locks — includes lockout protection, delayed locking and memory feature			
	S	S	

standard and available equipment (cont'd)			
	Custom	Limited	
Power windows — includes driver and front express-down and passenger lockout feature			
	S	S	
Rear window defogger — electric			
	S	S	
Remote keyless entry — includes instant alarm, perimeter lighting, security feedback and individually programmable transmitters			
	S	S	
Safety belts			
— front outboard seat-mounted lap/shoulder belts with center seat lap belt	S	S	
— rear outboard and center lap/shoulder belts	S	S	
Seats			
— cloth 55/45 reclining split-front bench, includes driver and passenger manual lumbar adjusters	S	—	
— leather-trimmed 55/45 split-front bench, includes driver power and passenger manual lumbar adjusters	—	S	
— leather-trimmed seating surfaces	A	S	
— power 8-way driver	S	—	
— power 8-way driver and front passenger	A	—	
— power 10-way driver and front passenger, includes power recliners	—	S	
— heated front outboard seats	A	S	
Steering wheel controls			
— cruise control	S	S	
— audio control	A	S	
— temperature control	—	A	
Storage drawer — center instrument panel			
	S	S	
Sunshades — extendable with supplemental shade feature			
	S	S	
Theft-Deterrent System — includes alarm, starter interrupt and central unlocking feature			
	A	S	
TILT-WHEEL[®] steering column — adjustable steering column			
	S	S	
Trunk cargo net			
	A	S	
Trunk lock release — power activation with valet lockout			
	S	S	
Trunk release handle — mounted inside the trunk			
	S	S	
Universal transmitter — programmable three-function remote for garage door and more			
	A	S	
Visor vanity mirrors			
— driver and passenger, covered	S	—	
— driver and passenger, covered with lighting feature	A	S	
exterior features			
Cornering lamps			
	—	S	
Courtesy/warning lights — front and rear doors			
	—	S	
Headlamps — Includes daytime running lamps with Twilight Sentinel			
	S	S	
Mirrors			
— dual fold-away power remote	S	—	
— dual fold-away power remote with driver-side electrochromic-auto dimming feature	A	S	
— heated with memory feature	—	S	
Moldings — color-keyed bodyside			
	S	S	
Stripe — bodyside accent			
	A	S	
Sunroof — power sliding and tilting with sunshade			
	—	A	
Tinted glass — Solar-Ray [®] solar-control windshield, rear window and side glass			
	S	S	

We hope this brochure has provided you with an excellent understanding of the luxury, comfort, advanced technology and safety that are yours when you choose LeSabre.

Please visit

www.buick.com

for even more information, including:

current offers

Research the latest offers on buying or leasing a new LeSabre.

virtual showroom

Explore a myriad of photographs, view video footage and take a virtual tour of LeSabre.

build your own

Choose from a variety of interior and exterior options to create the 2002 LeSabre that's right for you.

competitive comparisons

Review detailed, feature by feature comparisons of LeSabre and its competitors.

dealer location

Find the Buick dealer nearest you.

You can also get additional information by calling

1-800-4A-BUICK.

Upromise is a revolutionary college savings accelerator that can help you save thousands of dollars for college. Through Upromise, America's most trusted companies contribute a portion of your everyday spending to a college savings account for your children, grandchildren or any other child you wish to support. For complete details on the GM-Upromise program, go to <http://upromise.gm.com>. Enrollment is simple and absolutely free.



standard and available equipment		Custom	Limited
S	Standard	A	Available — Not available
Air bags			
—	driver and right front passenger dual stage inflation	S	S
—	driver and right front passenger seat-mounted side impact	S	S
Air conditioning			
—	manual single zone climate control	S	—
—	automatic dual zone climate control with rear-seat outlet	—	S
Air filtration system			
—	front-seat storage with dual cup holders	S	S
—	rear-seat fold down with dual cup holders and pass-through to trunk	—	S
Audio systems			
—	(UN6) ETR® AM/FM stereo with seek/scan, digital clock and cassette	S	—
—	(UN0) ETR AM/FM stereo with seek/scan, digital clock, RDS display, Theftlock! CD and Auto Tone Control, includes remote steering wheel controls	A	—
—	(UPO) ETR AM/FM stereo with seek/scan, digital clock, RDS display, Theftlock, cassette, CD and Auto Tone Control, includes remote steering wheel controls	A	S
—	extended range four-speaker system	S	—
—	Concert Sound II six-speaker system	A	S
—	diversity antenna integrated into the windshield and rear glass	S	S
Carpet savers — front and rear			
—	Child seat anchors — upper and lower	S	S
—	Child security door locks — rear doors	S	S
Convenience Plus Features — include electronic reminder tones for ignition key, headlamps, turn signals, parking brake "on"; delayed entry lighting; delayed exit lighting; theater dimming; Battery Run-down Protection; lockout protection; delayed locking; PASS-Key™ III passive theft-deterrent system and Twilight Sentinel® with daytime running lamps			
—	Driver Information Center — includes trip computer, low oil, coolant, washer fluid and fuel reminders, oil life and tire inflation monitor	A	S
Five-Passenger Convenience Console Package — includes 45/45 bucket seats, convenience console with dual cup holders, removable cell phone/writing pad tray, storage bin, leather armrest, two auxiliary power outlets and rear seat bi-level vents			
—	Inside rearview mirror — electrochromic-auto dimming	A	—
—	electrochromic-auto dimming with compass	A	S
Instrumentation			
—	full analog cluster with fuel, temperature and speedometer gauges	S	—
—	full analog cluster with fuel, temperature, speedometer, tachometer, low fuel indicator and Driver Information Center	A	S
OnStar — Custom with SE Package and Limited only			
—	Overhead console — includes front reading lamps on Custom; includes front and rear reading lamps on Limited	S	S
Personal Choice features — includes settings for door locks, perimeter lighting and remote keyless entry security feedback			
—	memory settings for driver seat adjustments, outside mirrors, climate control and radio presets	—	S
Power door locks — includes lockout protection, delayed locking and memory feature			
—		S	S

standard and available equipment (cont'd)		Custom	Limited
Power windows — includes driver and front express-down and passenger lockout feature			
—		S	S
Rear window defogger — electric			
—		S	S
Remote keyless entry — includes instant alarm, perimeter lighting, security feedback and individually programmable transmitters			
—		S	S
Safety belts			
—	front outboard seat-mounted lap/shoulder belts with center seat lap belt	S	S
—	rear outboard and center lap/shoulder belts	S	S
Seats			
—	cloth 55/45 reclining split-front bench, includes driver and passenger manual lumbar adjusters	S	—
—	leather-trimmed 55/45 split-front bench, includes driver power and passenger manual lumbar adjusters	—	S
—	leather-trimmed seating surfaces	A	S
—	power 8-way driver	S	—
—	power 8-way driver and front passenger	A	—
—	power 10-way driver and front passenger, includes power recliners	—	S
—	heated front outboard seats	A	S
Steering wheel controls			
—	cruise control	S	S
—	audio control	A	S
—	temperature control	—	A
Storage drawer — center instrument panel			
—	Sunshades — extendable with supplemental shade feature	S	S
Theft-Deterrent System — includes alarm, starter interrupt and central unlocking feature			
—		A	S
TILT-WHEEL™ steering column — adjustable steering column			
—		A	S
Trunk cargo net			
—		S	S
Trunk lock release — power activation with valet lockout			
—		S	S
Trunk release handle — mounted inside the trunk			
—		S	S
Universal transmitter — programmable three-function remote for garage door and more			
—		A	S
Visor vanity mirrors			
—	driver and passenger, covered	S	—
—	driver and passenger, covered with lighting feature	A	S

exterior features (cont'd)		Custom	Limited
Tires			
—	P215/70R15 all-season blackwall steel-belted radial	S	S
—	P225/60R16 touring blackwall steel-belted radial (included with Gran Touring suspension)	A	A
Wheels			
—	15" steel wheel with deluxe wheelcover	S	—
—	15" multispoke aluminum	A	S
—	16" cross-lace aluminum	A	A
—	16" aluminum (requires Gran Touring Suspension Package)	A	A
—	16" chrome-plated aluminum (late availability)	—	A
Windshield wiper			
—	2-speed with variable delay feature	S	—
—	moisture-sensing	A	S
mechanical features			
Brakes — four-wheel anti-lock disc			
—		S	S
Driver Confidence Package — includes StabiliTrak, EyeCue ¹ head-up windshield display and self-sealing tires			
—		—	A
Engine block heater			
—		A	A
Exhaust — stainless steel			
—		S	S
Front-wheel drive			
—		S	S
Hood lock — inside release			
—		S	S
Horn — dual-note			
—		S	S
Steering — power-assisted rack-and-pinion			
—		S	S
Suspension			
—	four-wheel independent with automatic rear level control	S	S
—	Gran Touring Suspension Package, includes touring-tuned suspension components, 3.05 axle ratio, leather-wrapped steering wheel, 16" brakes and aluminum wheels with P225/60R16 tires	A	A
Tire inflation monitor — included in Driver Information Center			
—		A	S
Traction control — full range			
—		A	S
Transmission — four-speed electronically controlled automatic with overdrive			
—		S	S



15" Steel Wheel (with deluxe wheelcover) standard on Custom



15" Multispoke Aluminum Wheel standard on Limited, available on Custom



16" Cross-Lace Aluminum Wheel available on Custom and Limited



16" Aluminum Wheel included with available Gran Touring Suspension Package



16" Chrome-Plated Wheel available on Limited (late availability)

specifications	
engine	
Type	3.8-liter 3800 Series II V6
Horsepower	205 @ 5200 rpm
Torque	230 @ 4000 rpm
Fuel economy (city/hwy)	20/29*
capacities	
Trunk (cu. ft.)	18.0
Fuel tank (gal.)	18.5
Base curb weight (lbs.)	
— Custom	3,567
— Limited	3,591
exterior dimensions (inches)	
Length	200.0
Width	73.5
Height	57.0
Wheelbase	112.2
Front tread	62.3
Rear tread	62.3
interior dimensions (inches)	
Legroom	42.4/39.9
Headroom	38.8/37.8 (36.1 rear with sunroof)
Shoulder room	59.1/58.7
Hip room	56.1/56.6

*Based on 2002 EPA estimates.

paint	
White (40)	Interior: Medium Gray Taupe Graphite
Sterling Silver Metallic (12)	Interior: Medium Gray Graphite
Light Bronzest Metallic (54)	Interior: Taupe
Dark Bronzest Metallic (76)	Interior: Taupe
Dark Polo Green (91)	Interior: Medium Gray Taupe Graphite
Titanium Blue Metallic (55)	Interior: Medium Gray Taupe Graphite
Ming Blue Metallic (25)	Interior: Medium Gray Taupe Graphite
Medium Red Pearl (44)	Interior: Medium Gray Taupe Graphite
Black (41)	Interior: Medium Gray Taupe Graphite
upholstery	
Medium Gray Custom Cloth	Taupe Custom Cloth
Graphite Custom Cloth	Medium Gray Leather
Taupe Leather	Graphite Leather

A word about this brochure. We have tried to make this brochure comprehensive and factual. We reserve the right, however, to make changes at any time, without notice, in prices, colors, materials, equipment, specifications, models and availability. Some information may have been updated since the time of printing, so please check with your Buick dealer for complete details. Buick reserves the right to lighten or shorten the model year for any product for any reason, or to start and end model years at different times. **Child safety.** Children are safer if they are seated in a rear seat using the appropriate child safety seats and restraints, which is the General Motors recommendation that child safety seats be properly secured in a vehicle's rear seat. Never place a rear-facing infant restraint in the front seat of any vehicle equipped with an active air bag. Front seat side-impact air bags help reduce the risk of injury to front seat occupants in side impacts. See your vehicle Owner's Manual and child safety seat instructions for more safety information. **Engines.** Buicks are equipped with engines produced by GM or other suppliers. **Warranty.** The GM 3-year 36,000-mile New Vehicle Limited Warranty covers repairs for any new Buick, including labor and parts, to correct any defects in material or workmanship occurring during the warranty period. The complete terms (including those that will be covered for 3 years or 36,000 miles, whichever comes first. Excludes normal maintenance.) See your Buick dealer for terms of this limited warranty. The **GM Care!** For information or to apply for the GM MasterCard! call 1-800-862-CAR2. **SmartLease!** by GMAC! For information about SmartLease or any of the other quality GMAC financing options, see your Buick dealer or call 1-800-323-SMART. **GM Mobility Program.** Buick recognizes the importance of mobility to everyone's life and, therefore, offers financial assistance to persons with disabilities through the General Motors Mobility Program. This program can provide up to \$1,000 reimbursement toward the cost of alternate/modified mobility equipment for drivers or passengers. For details and free resource information, call 1-800-323-9935 (TTY: 1-800-833-9935).

BUICK LESABRE
it's all good™

