



THE NEW 2007 CL-CLASS



Mercedes-Benz



CL600.

The new 2007 CL-Class. Will your passions be quenched? Or fueled?



The CL-Class

DYNAMICS

| | |
|---------------|----|
| V-8 engine | 6 |
| V-12 engine | 8 |
| Transmissions | 10 |
| Handling | 12 |

COMFORT

| | |
|--------------|----|
| Interior | 14 |
| Seat comfort | 18 |

SAFETY

| | |
|--------------|----|
| PRO-SAFE™ | 22 |
| PERFORM-SAFE | 24 |
| PRE-SAFE® | 28 |
| PASSIVE-SAFE | 30 |
| POST-SAFE | 32 |

PERFORMANCE

| | |
|-----|----|
| AMG | 34 |
|-----|----|

COLOURS AND MATERIALS

| | |
|---------------------|----|
| <i>designo</i> | 38 |
| Paint | 40 |
| Combination options | 41 |
| Leather | 42 |
| Wood trim | 43 |

EQUIPMENT

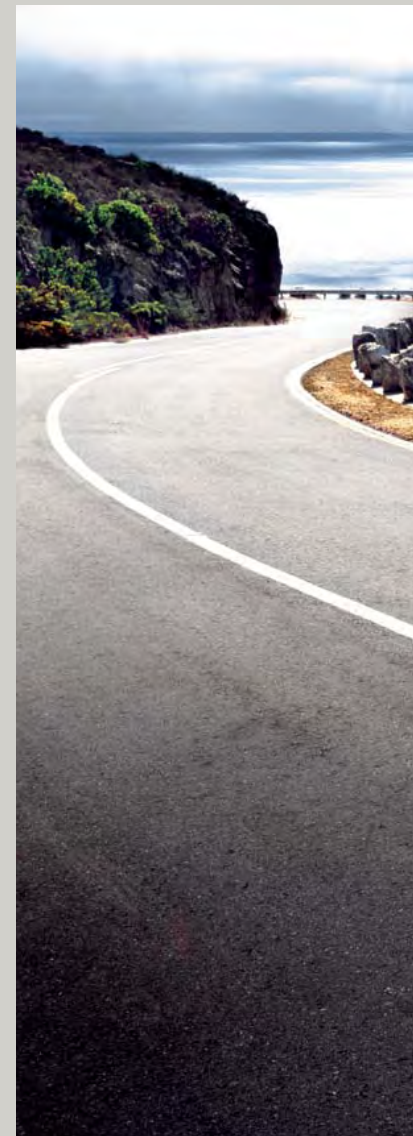
| | |
|-------------------|----|
| Equipment listing | 44 |
| AMG Sport Package | 46 |
| Wheels | 48 |
| Accessories | 50 |

TECHNICAL FEATURES

| | |
|----------------|----|
| Technical data | 52 |
|----------------|----|

SERVICE AND SUPPORT

| | |
|---------------------------|----|
| Customer care and website | 53 |
|---------------------------|----|





CL600.



CL550 shown with optional 19" multi-spoke light-alloy wheels.



At the crossroads of passion and precision.

In the new 2007 CL-Class, every detail has come together perfectly. Because every detail represents a choice. A choice to be, to make, to do the best. The result is our most sophisticated coupe ever.

The form of a coupe is usually dominated by the front and rear pillars linked by the powerful arch of the roof. In the case of the new CL-Class, this is just one of many exciting design characteristics. Indeed, its entire formal vocabulary is an irresistibly eloquent invitation to take the wheel. Even at first glance, the CL seems to hug the road, ready to deliver an exceptional driving experience.

The impressive radiator grille and the high-tech headlamps give the front section its unmistakable identity while the muscular contours of the wings dominate the side view. A distinctive rising feature line sweeps across the flanks of the vehicle and merges with the characteristic roof line before continuing on to the rear lights which wrap round into the elegant, yet powerful rear.

Styling as dynamic as this inevitably raises expectations about performance. A look under the long hood confirms the presence of a power plant that is eminently worthy of a coupe like the CL.

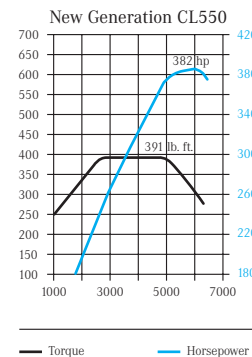
Powerful and discreet. Who says you can't have the best of both worlds?

The CL550's new 5.5-litre V-8 produces 382 hp at 6,000 rpm and 391 lb-ft of torque at 3,000 rpm. Translation: truly thunderous performance.

To reduce engine weight and increase durability, the engine block is made of cast aluminium, a construction similar to that of Mercedes-Benz racecar engines. Innovative aluminium-silicon-alloy cylinder sleeves help reduce friction by up to 50%. Yet with all its power, the engine remains smooth and efficient, thanks in part to four valves per cylinder, dual overhead cams (DOHC) and continuously variable intake and exhaust valve timing. Working in tandem, these technologies manage the air-fuel mixture to give the engine the power it needs, precisely when it needs it. The result? The CL550 goes from 0 to 100 km/h in a commanding 5.4 seconds¹.

CL550
The new V-8
generates
an additional
52 lb-ft of torque.

¹Stated rates of acceleration are based upon manufacturer's track results and may vary depending on model, environmental and road surface conditions, driving style, elevation and vehicle load.



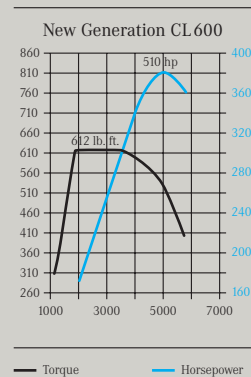


4.6 seconds. Need we say more?

The CL600's bi-turbo V-12 – one of the world's most powerful production car engines – produces 510 hp and a staggering 612 lb-ft of torque.

From a standstill, 100 km/h is reached in a scant 4.6 seconds!¹

Its 2-piece, die-cast engine block provides exceptional strength, as do its double-hardened polished crankshafts and lightweight/high-strength magnesium cylinder head covers. A liquid-to-air intercooler creates more powerful combustion. Two turbochargers – one per cylinder bank – increase peak power – power being most definitely what this engine is all about.



CL600

The enhanced bi-turbo V-12 engine's output and torque are up by 17 hp and 22 lb-ft respectively.



¹Stated rates of acceleration are based upon manufacturer's track results and may vary depending on model, environmental and road surface conditions, driving style, elevation and vehicle load.



CL600.

Intelligent transmissions that are still eager to learn.

Our muscular power plants are balanced by transmissions of equal intelligence. The CL550 is the only car in its class to have a 7G-TRONIC 7-speed automatic as standard equipment. This wide range of closely spaced gears gives the driver the ideal gear for virtually any driving situation, and makes for smoother cruising, more responsive acceleration and even improved fuel efficiency.

To accommodate its massive torque, the CL600 is fitted with a 5-speed automatic transmission. Its driver-adaptive technology actually learns how you like to drive and adjusts its shift points accordingly.

For an extra measure of fun, all CL models feature standard Touch Shift, allowing you to select gears via shift buttons on the rear of the steering wheel. You can also choose between Comfort and Sport shifting profiles.



DIRECT SELECT
Select gears via
a simple tap of
the shift lever.



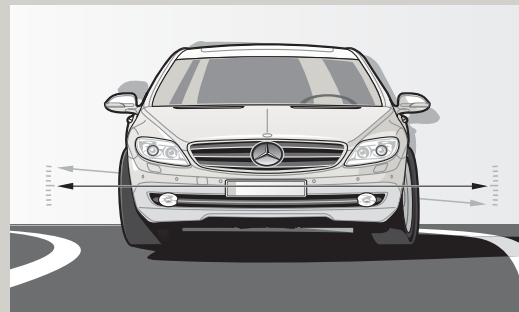
7-Speed Automatic
After 40 years and
11 million transmissions,
we present our
ultra-smooth 7-speed.



Power on an even keel.

The CL-Class possesses Active Body Control (ABC) – one of the industry’s most advanced suspension systems. ABC provides an excellent balance of ride comfort and handling, virtually eliminating body roll during cornering. This highly integrated system uses sensors and electronically controlled high-pressure hydraulics to dramatically reduce the effects of roll, vibration, pitch, dive and squat during aggressive driving or evasive maneuvers.

Handling is also made smooth and responsive by a multi-link suspension that provides exceptional driving poise and control. A 5-arm rear multilink design controls rear-wheel movement. Lightweight/high strength aluminium components further ensure that the CL is an automobile that grabs the road and your imagination.



Active Body Control (ABC)

The ride height can be adjusted manually via the COMAND system for snowdrifts, low bottom clearance or rutted roads.





The Chassis

ABC system struts with hydraulic action create a level, controlled ride.



CL550.



Not so much an interior as an inner sanctum.

We've long been dedicated to creating true drivers' cars, where the environment of the driver is sacred space.

That's why our four-zone THERMOTRONIC climate control system envelops the cabin with individual heating and cooling controls for driver, front passenger and each rear passenger. Set to the Auto position, our system even monitors sunlight intensity and seat occupancy, determining which side of the car requires greater cooling and adjusting the temperature and airflow accordingly.

Like a first-class bespoke suit, the CL surrounds you with the best materials, coordinated to perfection. Hand-selected Burl Walnut wood trim in the CL550 or Natural Poplar wood trim in the CL600 complements the choice of five hand-selected leather combinations in both vehicles and conveys the craftsmanship that defines these automobiles.



CL550.

Remarkably sophisticated, yet surprisingly simple.

An automobile this advanced should leap at your command. The CL-Class does: you can access most audio features such as the Hands-Free Communication System – with the standard Cellular Telephone Preparation (MHI) – and the Navigation System through LINGUATRONIC voice control.

One of the systems you'll be controlling is the harman/kardon® LOGIC7® surround-sound system. This system offers unparalleled sound quality with six hundred watts, 12 speakers and a multitude of digital format capabilities: MP3s, CDs, DVD-audio and DTS (digital theatre sound).

Cabin acoustics are monitored and automatically adjusted if needed, continually delivering a sensational experience. In addition, the high-resolution 8-inch colour COMAND display screen lets you control the audio, climate control, telephone and navigation systems from a convenient central location.

The Rear View Camera also displays potential hazards on the COMAND screen when reversing, in addition to lines indicating the steering angle and vehicle width. Combined with PARKTRONIC's short-range park-assisting sensors, complete confidence in the driver's seat comes standard.

COMAND Controller

Various features can be controlled via the COMAND controller, function keys, and multifunction steering wheel or LINGUATRONIC voice control. The oval palm rest conceals a keypad for the telephone.







Pleasure. An engineering principle.

In a CL, feeling good is an exact science. That's why our seats are designed to embrace you, offering unrivaled comfort and security.

To transform these seats into even more, consider the following options (all of which are standard on the CL600): adding the optional Drive-Dynamic multicontour front seats provides the ultimate in ergonomics. Thirteen pneumatic chambers may be adjusted in the lumbar, lower cushion and side-bolster areas. Four levels of massage help fight fatigue. For added control when cornering, the system continuously monitors driving conditions and adjusts air chambers within the seat for added support, helping to counteract lateral G-forces.

Three levels of heating and ventilation are also available for the driver and front passenger seats. The optional Climate Comfort Seats on the CL550 keep you cool by gently circulating air through perforations in the seat and backrest.

We've also been careful not to slight rear passengers who will enjoy individual seats with a fold-down armrest and over 36" of headroom. For increased rear passenger comfort, the backs of the front seats in the CL-Class are contoured, creating more leg and knee room for those in the rear.

Smart Seating

In the Drive-Dynamic multicontour front seats, Seat Memory recalls the settings of the inflatable pneumatic cushions.





CL600.



Safety: Too precious not to share.

At Mercedes-Benz, we're proud to say we've always allowed our safety innovations to be shared. As one of our engineers said: "What is the value of a patent next to the value of a human life?"

And PRO-SAFE™ is yet another reflection of this tradition, one that will some day prove a benefit to drivers everywhere. PRO-SAFE™ is the philosophy behind a series of linked technologies that come into play in the critical moments before, during and after an accident. There are four components.

1) PERFORM-SAFE is comprised of proactive components such as Adaptive Brakes and the Electronic Stability Program (ESP®), which help you avoid dangerous situations¹.

2) If there's a high probability of an accident, PRE-SAFE® prepares the occupants and the vehicle, moving the front passenger seat into a more favorable position for air bag and seat belt² effectiveness and, if deemed necessary, closing the windows and sunroof.

3) The PASSIVE-SAFE systems provide passengers with protection during a collision, using such features as seat-belt tensioners and air bags.

4) POST-SAFE features, designed to minimize risk after a crash, include automatic engine cutoff and automatic dialing to dispatchers, who can contact emergency personnel if needed.

All the components behind PRO-SAFE™ work in harmony, each element bringing all Mercedes-Benz drivers closer to our vision of accident-free driving. Automatically, instantly.

¹No system, regardless of how advanced, can overcome the laws of physics or correct careless driving. Please always wear your seat belt.

²WARNING: The forces of a deploying air bag can cause serious or fatal injuries to a child under age 13. See Operator's Manual for additional warnings and information on air bags, seat belts and child seats.





THE SAFETY PHILOSOPHY
OF MERCEDES-BENZ



Wise men say there are no accidents. We'd like to prove them right.

Most accidents begin a long time before impact. With this in mind, PERFORM-SAFE gives drivers the tools needed to anticipate and, if at all possible, avoid an accident.

For example, the Electronic Stability Program (ESP®) continuously monitors your vehicle's motion to help keep it going in your intended direction. If ESP® detects wheelspin, severe understeer (plowing) or oversteer (fishtailing), the system can brake individual wheels and reduce engine power to help bring the vehicle back under control.

The Mercedes-Benz brake system also plays a crucial role in accident avoidance. In addition to the Anti-lock Braking System (ABS), the CL-Class is equipped with ADAPTIVE BRAKE system that dries the brake pads off periodically when the windshield wipers are on. Predictive Brake

Priming recognizes a potential emergency braking situation and positions the brake pads closer to the discs for quicker brake response. Brake Assist (BAS) automatically boosts braking power, applying the brakes faster in case of an impending collision.

Another PERFORM-SAFE breakthrough: the intelligent DISTRONIC PLUS Adaptive Cruise Control¹, offered only by Mercedes-Benz. For the CL-Class, this optional technology determines whether you're closing in on a vehicle too quickly and starts braking even if your foot is still on the gas pedal, to maintain the selected following distance. If necessary, DISTRONIC PLUS can bring you to a complete stop. If the vehicle ahead of you suddenly slows or abruptly stops, the DISTRONIC Proximity Warning System will issue a visual and audio warning to alert the driver.

¹DISTRONIC PLUS Adaptive Cruise Control is no substitute for active driving involvement. It does not react to stationary objects, nor recognize or predict the curvature and lane layout of the road or the movement of vehicles ahead, and can only apply a maximum of 40% of vehicle braking power.

Innovations that see beyond the next bend.

PERFORM-SAFE advances literally change how we see the road. For instance, Bi-Xenon headlamps with Active Curve Illumination turn as you steer. Around a bend at night, the headlamps pivot to illuminate curves and corners. This system delivers performance that is up to 90% better than conventional fixed headlamps.

PERFORM-SAFE can also feature Night View Assist, which is available as an option for both the CL550 and CL600. This advanced technology can detect objects up to 500 feet away in near-complete darkness¹. While state-of-the-art projectors cast the road in invisible infrared light, an infrared camera captures that reflected light and converts it to visible images on the instrument panel's crystalline display. Night View Assist improves upon more common infrared technology because it recognizes warm and cold objects alike. We can't turn day into night, but we're getting extremely close.

¹Night View Assist does not replace the use of headlamps and should not be used as the primary visual source for the driver.





Night View Assist.

Technology that expects the unexpected.

Mercedes-Benz is the first and only automaker to offer PRE-SAFE® technology. A revolution in safety, PRE-SAFE® continuously monitors inputs from the Electronic Stability Program (ESP®) and Brake Assist features. If circumstances suggest the likelihood of an accident, PRE-SAFE® helps automatically secure your vehicle before one occurs.

It's simple: PRE-SAFE® activates anytime evasive steering maneuvers are detected. This revolution in safety can also adjust the occupied front passenger's seat to help ensure optimum air bag and seat belt effectiveness. If severe skidding indicates a rollover is imminent, PRE-SAFE® automatically closes the windows and sunroof. In vehicles equipped with optional Drive-Dynamic multicontour front seats, PRE-SAFE® also inflates the front seat cushions and seatbacks to help keep occupants situated. When driving conditions return to normal, PRE-SAFE® automatically releases the seat belt tensioners. Perhaps most amazing, all this happens in just seconds.





Beneath its velvet glove, an iron fist.

Behind all its beautiful interior appointments, the CL boasts a powerful combination of strength and innovation all its own. PASSIVE-SAFE construction employs a series of reinforced crumple zones and advanced technology. Many crucial areas of the CL-Class body are composed of High-Strength/Low-Alloy and Ultra High-Strength/Low-Alloy steel for optimum protection. Sophisticated crumple zones also help divert some of the force of an impact around your vehicle.

The CL-Class further benefits from the 11-way protection of a 9 air bag system, including two-stage front air bags and front and rear side-impact air bags. This design includes full-length window curtain air bags on the front and rear windows to help protect all passengers from head injuries and broken glass in side impacts and rollovers. Working in tandem with the air bags are Emergency Tensioning Devices (ETDs) and belt force limiters. If a collision exceeds a preset threshold, the ETDs instantly remove the slack from your seat belt. Belt force limiters allow some give in the seat belts to help minimize seat-belt strain.



When every second counts, count on us.

In the urgent moments just after an accident, our POST-SAFE technology helps minimize risk to you and your passengers and aids rescue efforts. Following a collision, POST-SAFE automatically carries out a range of safety measures: the engine shuts off and hazard signals and emergency interior lighting switch on, the side windows are lowered and the doors are unlocked. Cutting points on the windshield and rear window help emergency responders identify the sections of the A and C pillars that can be cut should it be necessary to tear off the roof. And anytime an air bag or Emergency Tensioning Device is activated, the vehicle engages the standard TeleAid System¹, putting your vehicle in touch with the TeleAid Emergency Response Center, where trained specialists can assess the situation and alert emergency services. Mercedes-Benz understands that when it comes to safety, time is of the essence.

¹Subscription is required for service to be active. TeleAid operates only where cellular and Global Positioning System coverage is available.





CL63 AMG.

The car Formula One drivers like to drive to work in.

The CL-Class paired with AMG: what better way to bring the ultimate in performance to the road?

“One man, one engine” – this philosophy is behind the passion that is immediately apparent at the engine workshops in Affalterbach. Each power plant is the responsibility of one highly experienced engineer – from the installation of the crankshaft to the addition of engine oil. This is how the engine specialists achieve such outstanding quality and reliability every time. And so that you know under whose care the heart of your Mercedes-Benz AMG was built and tested, the engine model plate bears the signature of its creator.

For the new CL63 AMG, the Mercedes-Benz AMG engineers have designed a thunderous V-8 engine. The newly developed AMG sport suspension is based on Active Body Control (ABC). This sport car boasts a high-performance braking system and the AMG sports exhaust system with two twin-chromed tailpipes. Complete with the AMG body styling package – including a front apron with enlarged air intakes, chrome-ringed fog lamps, side skirts and a rear apron – the car cuts an extremely sporty figure.

See your dealer for details.



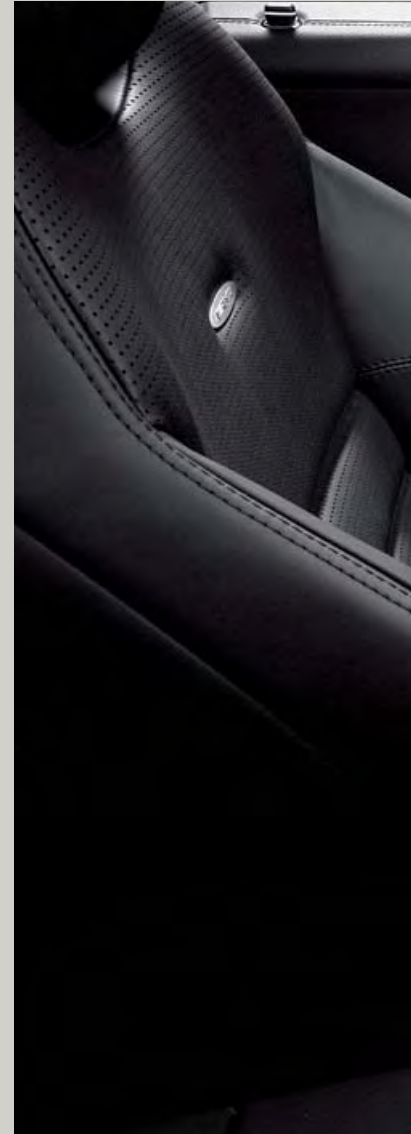
Even top athletes like a little pampering.

The CL63 AMG is a top athlete with a penchant for luxury. AMG doorsill panels in brushed stainless steel welcome you on board while the premium AMG sport seats provide optimum lateral support.

The cockpit also bears the AMG signature. An AMG ergonomic sports steering wheel with silver-coloured aluminium shift paddles allows you to change the gears of the AMG SPEEDSHIFT™ 7G-TRONIC 7-speed automatic transmission effortlessly, while the AMG instrument cluster immediately catches the eye with its AMG main menu including the RACETIMER function. If required, the RACETIMER can even clock your lap times.



AMG cockpit
Sporty design: the AMG instrument cluster incorporates the AMG main menu including RACETIMER.



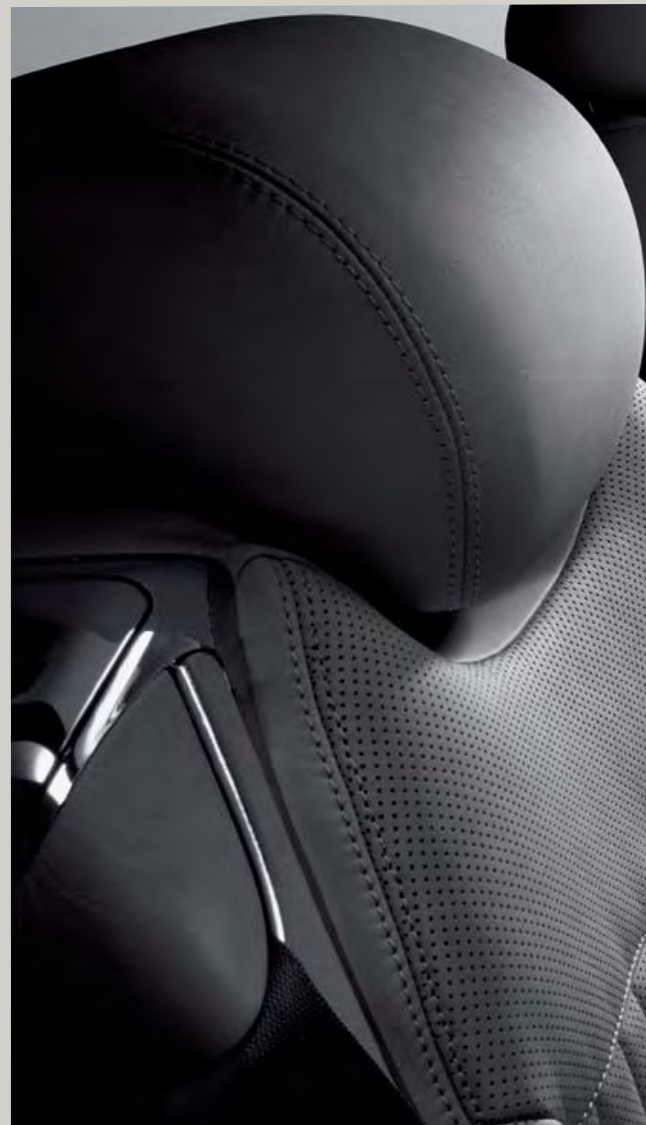


CL63 AMG.

As individual as you are.

It goes without saying that you can always expect the best from the CL-Class. Yet another reason for us to exceed your expectations is with exquisite materials and finishing touches that display a meticulous attention to detail. A *designo* interior offers an unparalleled statement in luxury, comfort and personal taste. Choose from an extensive range of hand-fitted *designo* aniline leather seats with characteristic ten-rib vertical fluting and a high-quality *designo* insignia in the backrests. The armrests for the doors and centre console are also upholstered with *designo* leather and trim elements are finely coordinated. Alcantara roof lining in anthracite completes the package.

See your dealer for details.

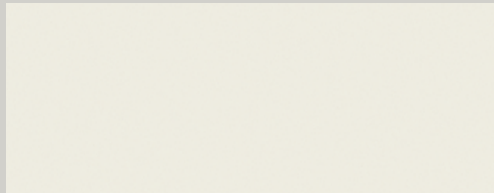




NON-METALLIC

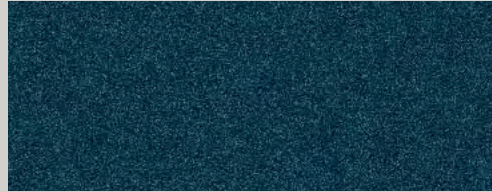


040 Black

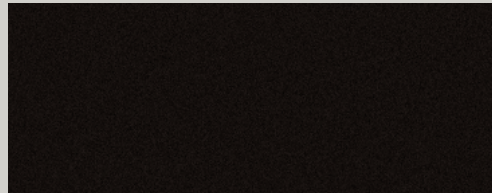


650 Calcite White

METALLIC



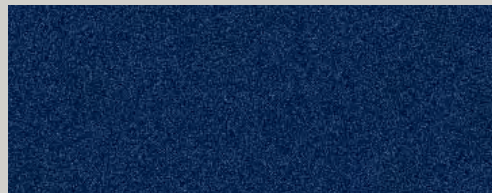
189 Black Opal



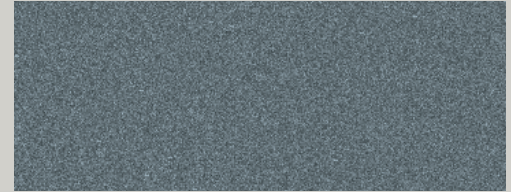
197 Obsidian Black



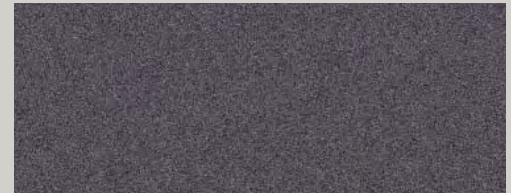
300 Periclase Green



359 Capri Blue



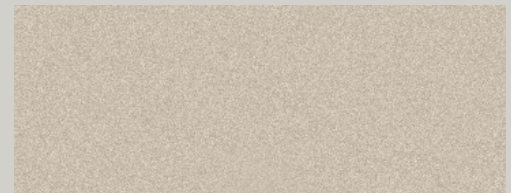
368 Flint Grey



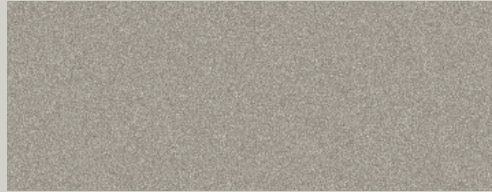
494 Germanite Grey



544 Barolo Red



693 Desert Silver



723 Pewter



775 Iridium Silver

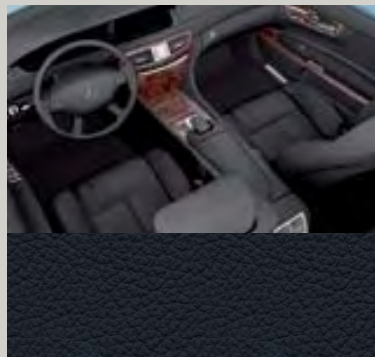
| | PASSION Leather ¹ | | | | | Exclusive PASSION Leather ² | | | | |
|---------------------|------------------------------|------------------------------|------------------------------|--------------------|--------------------|--|------------------------------|------------------------------|--------------------|--------------------|
| | Black | Basalt Grey/Dark Basalt Grey | Savanna Beige/Cashmere Beige | Sahara Beige/Black | Cognac Brown/Black | Black | Basalt Grey/Dark Basalt Grey | Savanna Beige/Cashmere Beige | Sahara Beige/Black | Cognac Brown/Black |
| NON-METALLIC | | | | | | | | | | |
| Black | ● | ● | ● | ● | ● | ● | ● | ● | ● | ● |
| Calcite White | ● | ● | ○ | ○ | ● | ● | ● | ○ | ○ | ● |
| METALLIC | | | | | | | | | | |
| Black Opal | ● | ● | ● | ● | ○ | ● | ● | ● | ● | ○ |
| Obsidian Black | ● | ● | ● | ● | ● | ● | ● | ● | ● | ● |
| Periclase Green | ● | ● | ● | ○ | - | ● | ● | ● | ○ | - |
| Capri Blue | ○ | ● | ● | ● | ○ | ○ | ● | ● | ● | ○ |
| Flint Grey | ● | ○ | - | ○ | ○ | ● | ○ | - | ○ | ○ |
| Germanite Grey | ● | ● | ○ | ● | - | ● | ● | ○ | ● | - |
| Barolo Red | ● | ● | ● | ● | - | ● | ● | ● | ● | - |
| Desert Silver | ● | - | ● | ● | ● | ● | - | ● | ● | ● |
| Pewter | ● | ○ | ○ | ○ | ● | ● | ○ | ○ | ○ | ● |
| Iridium Silver | ● | ● | - | - | ● | ● | ● | - | - | ● |

● Recommended ○ Possible - Not recommended

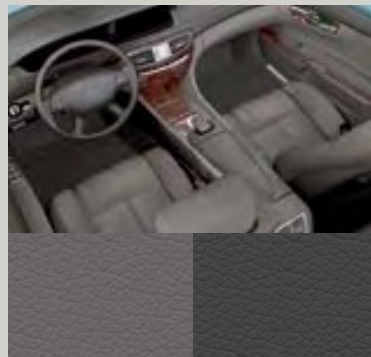
¹Standard on the CL550. ²Exclusive PASSION leather features *designo* styling. Standard on the CL600, not available for the CL550.

INTERIOR UPHOLSTERY

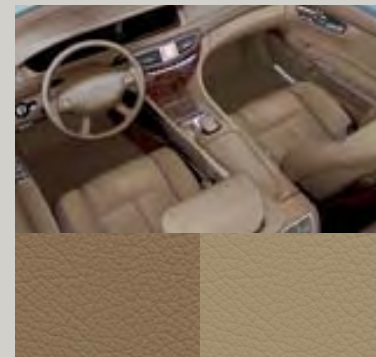
Both the CL550 and CL600 offer a wealth of upholstery appointments. The CL550 comes standard with hand-fitted, glove-soft PASSION Leather, and the CL600 features the sophistication of Exclusive PASSION Leather with *designo* styling. The CL600 also flaunts unique stitching and piping on the seats, and a well-matched Alcantara roof liner.



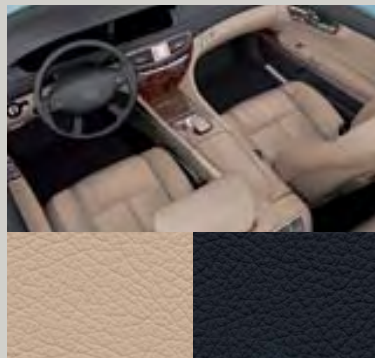
Black
801 PASSION Leather
511 Exclusive PASSION Leather



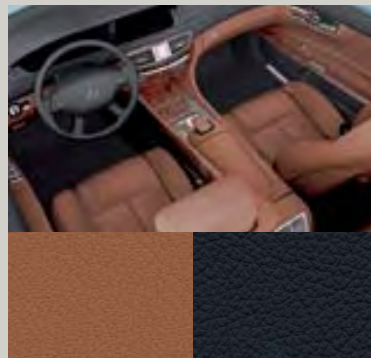
Basalt Grey / Dark Basalt Grey
808 PASSION Leather
518 Exclusive PASSION Leather



Savanna Beige / Cashmere Beige
804 PASSION Leather
514 Exclusive PASSION Leather



Sahara Beige / Black
805 PASSION Leather
515 Exclusive PASSION Leather



Cognac Brown / Black
807 PASSION Leather
517 Exclusive PASSION Leather

Stylish enough to impress. Strong enough, too.

The furnishings of a CL-Class are as sturdy as they are elegant. While the CL550 comes standard with tasteful high-gloss Burl Walnut wood trim, the CL600 has standard Natural Poplar wood trim. Both the CL550 and the CL600 offer Dark Ash and a matte Burl Walnut wood trim as no-cost options. The wood trim in the CL-Class is hand-fitted by expert craftsmen and has been specially treated in order to resist splintering in case of an accident.



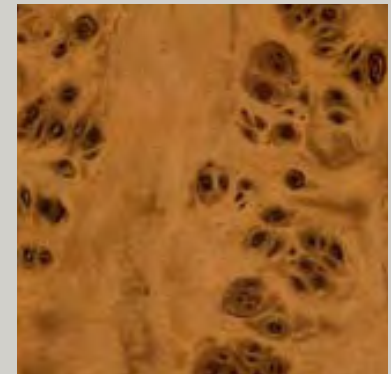
Burl Walnut (high-gloss)¹



Burl Walnut (matte)²



Dark Ash²



Natural Poplar³

¹Standard on the CL550, optional on the CL600. ²Optional on the CL550 and CL600. ³Only available on the CL600.

| <i>INDIVIDUAL EQUIPMENT (SELECTION)</i> | CL550 | CL600 |
|--|-------|-------|
| TRANSMISSION | | |
| 5-speed automatic transmission | - | • |
| 7G-TRONIC 7-speed automatic transmission | • | - |
| DIRECT SELECT with steering wheel gearshift buttons | • | • |
| TRACTION/STABILITY | | |
| Active Body Control (ABC) | • | • |
| ADAPTIVE BRAKES | • | • |
| Anti-lock braking system (ABS) | • | • |
| Brake Assist (BAS) | • | • |
| DISTRONIC PLUS Adaptive Cruise Control with Park Assist and audio/visual proximity warning | ○ | ○ |
| Electronic Stability Program (ESP®) | • | • |
| AUDIO/VISUAL/COMMUNICATION | | |
| Cellular telephone preparation (MHI) | • | • |
| COMAND APS with navigation | • | • |
| harman/kardon® LOGIC7® surround sound system with 6-disc DVD changer | • | • |
| LINGUATRONIC voice control | • | • |
| Rear view camera | • | • |
| EXTERIOR | | |
| 18" 5-spoke light-alloy wheels | • | - |
| 18" 5-spoke light-alloy wheels (V12 exclusive) | - | • |
| 19" multi-spoke light-alloy wheels | ○ | ○ |
| Active Bi-Xenon headlamps with washers and cornering lights | • | • |
| Auto-dimming mirrors (rearview and driver's side) | • | • |
| Electronically adjustable heated exterior mirrors with turn signal indicators and power folding function | • | • |

| <i>INDIVIDUAL EQUIPMENT (SELECTION)</i> | CL550 | CL600 |
|--|-------|-------|
| Power-tilt/sliding glass sunroof | • | • |
| Remote trunk release with power-assisted closure | • | • |
| Tinted infrared reflecting glass | • | • |
| Two-stage rain-sensing windshield wipers with heated windshield washing system | • | • |
| INTERIOR | | |
| 14-way power adjustable heated front seats with 3-position memory | • | • |
| Burl Walnut wood trim (high-gloss) | • | ○ |
| Climate Comfort front seats | ○ | • |
| Dark Ash or Burl Walnut (matte) wood trim | ○ | ○ |
| Drive-Dynamic multicontour front seats with massage function | ○ | • |
| Exclusive PASSION Leather upholstery with <i>designo</i> styling | - | • |
| Integrated garage door opener | • | • |
| Interior Lighting Package | • | • |
| ISOFIX child seat mounts | • | • |
| KEYLESS-GO | ○ | • |
| Leather/Burl Walnut heated steering wheel | • | • |
| Natural Poplar wood trim | - | • |
| PARKTRONIC | • | • |
| PASSION Leather upholstery | • | - |
| Pneumatic rear headrests | • | • |
| Power-tilt/telescoping steering column | • | • |
| SmartKey with panic button | • | • |
| THERMOTRONIC 4-zone automatic climate control | • | • |

• Standard ○ Optional - Not available

INDIVIDUAL EQUIPMENT (SELECTION)

| | CL550 | CL600 |
|---|-------|-------|
| SAFETY | | |
| Anti-theft alarm system | • | • |
| Belt tensioners with two-stage belt-force limiters for driver and passenger, one stage for rear seats | • | • |
| Dual-front, side (front and rear) and window curtain air bags | • | • |
| Four 3-point seat belts; front height-adjustable, rear with automatic belt-height adjustment | • | • |
| Night View Assist | ○ | ○ |
| TeleAid Emergency Calling System ¹ | • | • |
| Tire pressure monitoring system | • | • |



KEYLESS-GO

OPTION PACKAGE

| | CL550 | CL600 |
|---|-------|-------|
| AMG Sport Package AMG Styling Package. AMG 19" 5-spoke alloy wheels. Performance tires. | ○ | ○ |

• Standard ○ Optional - Not available



DVD changer

¹Subscription is required for service to be active. TeleAid operates only where cellular and Global Positioning System coverage is available.



CL550 shown with optional AMG Sport Package.

AMG style through and through.

The CL-Class is a prime example of driving excellence. And the AMG Sport Package makes that excellence even better. The newly rakish stance gives the CL-Class a silhouette that appears poised to spring forward. From its more aggressive front air dam to its aerodynamically sculpted rear bumper, the CL-Class with the AMG Sport Package wears its strength on its sleeve. Low, streamlined moldings enhance its profile, while 19" AMG light-alloy wheels¹ with a signature 5-spoke design round out the emboldened look and performance.



The beautifully sculpted grooves of the AMG Package tail apron may be the only view others get of your CL-Class.



For maximum road grip, the AMG Sport Package rolls the CL-Class along 19" AMG light-alloy wheels with high-performance tires!

¹Lower aspect ratio tires and accompanying wheels provide substantially increased treadwear, increased tire noise and reduced ride comfort. Winter tires are recommended for driving in snow and ice.

Rolling with personal distinction.

Mercedes-Benz has always understood the importance of details. It's why we offer a range of choices for your light-alloy wheels: they afford your CL-Class its own distinction. While our standard wheels sharpen the unique voice of your CL550 and CL600, you can make an even bolder pronouncement by selecting one of our other stylish designs. No matter which you choose, they all share a talent for reflecting your individual style.

The 19" multi-spoke light-alloy wheels are available as an option for the CL550 and CL600 (shown here on the CL550).





Standard CL550 18" 5-spoke light-alloy wheel. Not available on the CL600.



Standard CL600 18" 5-spoke light-alloy wheel (V12 exclusive). Not available on the CL550.



Optional 19" multi-spoke light-alloy wheel for the CL550 and CL600.



19" AMG 5-spoke light-alloy wheels. Available as part of the AMG Sport Package.



CL550 shown with optional 19" multi-spoke light-alloy wheels.



Make the most of your CL-Class.

Beyond our legendary standard features and attractive options is an array of practical and elegant accessories. These genuine Mercedes-Benz finishing touches refine the power, style and convenience of your CL-Class. From a Bluetooth adaptor that keeps you connected to 20" AMG accessory wheels, no detail is too small from keeping your vehicle all it can be.



iPod® Integration Kit

You've spent time carefully filling your iPod® with the great music you love. Now you can enjoy every minute of every song as you cruise in your CL-Class, courtesy of the iPod® Integration Kit.



Chrome mirror housing

These high-shine exterior housings perfectly complement our range of coordinated exterior refinements.



Ski rack

Driving to the slopes is now even more fun than skiing down them. Thanks to the new Alustyle ski and snowboard rack, you can take your hobbies with you safely. The standard version is designed to hold up to 4 pairs of skis or 2 snowboards while the luxury version can accommodate up to 6 pairs of skis or 4 snowboards.



20" AMG accessory wheels

Sporty yet beautiful, these accessory AMG 20" 5-spoke wheels ideally complement the self-assured style of the CL-Class.

| | CL550 | CL600 |
|---|-------------------------------------|-------------------------------------|
| Engine type | DOHC 32-valve V-8 | SOHC bi-turbo 36-valve V-12 |
| Total displacement | 5,461-cc | 5,513-cc |
| Net power | 382 hp @ 6,000 rpm | 510 hp @ 5,000 rpm |
| Net torque | 391 lb-ft @ 3,000 rpm | 612 lb-ft @ 1,800 – 3,500 rpm |
| Compression ratio | 10.7:1 | 9.0:1 |
| Acceleration, 0-100 km/h ¹ | 5.4 seconds | 4.6 seconds |
| Approximate top speed ² | 250 km/h | 250 km/h |
| Tires, front | 255/45 R 18 | 255/45 R 18 |
| rear | 255/45 R 18 | 275/45 R 18 |
| Fuel economy, ³ combined city/highway estimate | 9.7-15.4 L/100 km | N/A |
| Fuel tank capacity | 90.0 litres (11.0 litre reserve) | 90.0 litres (11.0 litre reserve) |
| Fuel requirement | Premium unleaded gasoline | Premium unleaded gasoline |
| Dimensions: ⁴ Wheelbase | 116.3 in/2,955 mm | 116.3 in/2,955 mm |
| Overall length | 199.4 in/5,065 mm | 199.4 in/5,065 mm |
| Overall height | 55.8 in/1,418 mm | 55.9 in/1,419 mm |
| Overall width | 84.2 in/2,139 mm | 84.2 in/2,139 mm |
| Track, front | 63.0 in/1,601 mm | 63.0 in/1,601 mm |
| rear | 63.3 in/1,607 mm | 63.3 in/1,607 mm |
| Coefficient of drag | 0.27 | 0.28 |
| Curb weight | 4,485 lb/2,035 kg | 4,890 lb/2,220 kg |
| Trunk capacity | 17.3 cu ft/490 litres | 17.3 cu ft/490 litres |

¹Stated rates of acceleration are based upon manufacturer's track results and may vary depending upon model, environmental and road surface conditions, driving style, elevation and vehicle load.

²Electronically limited. ³These estimates are based on the Government of Canada's approved criteria and testing methods. The actual fuel consumption of this vehicle may vary. Refer to the *Fuel Consumption Guide*. ⁴Dimensions shown are for models with standard equipment.

Mercedes-Benz Customer Care

24-hour Roadside Assistance

During the basic warranty coverage of 48 months and the time duration of the optional Extended Limited Warranty, Mercedes-Benz Roadside Assistance will be at your service. We'll bring you some gas, replace a flat tire with your spare, or jumpstart your car. In the event of a mechanical breakdown, if attempts by our Roadside Assistance technician have not made your vehicle safely operable, towing service will be provided to the nearest Mercedes-Benz dealership. Assistance is available 24 hours a day, every day, to anyone driving a Mercedes-Benz anywhere in Canada or the continental U.S.¹

Wear and tear coverage

For 24 months or 40,000 km (whichever comes first) many items normally considered "wear and tear," such as light bulbs, brake pads and discs, are covered. If necessary, an authorized Mercedes-Benz dealer will replace these parts at no charge to you.

Customer service

Owning a Mercedes-Benz means that when you have a question, we're here to help. Customer Service is open from 9 a.m. to 5 p.m. EST, Monday through Friday, and is staffed with knowledgeable Mercedes-Benz people who can talk you through the finer points of working your car's audio system – or even assist you in locating the nearest Mercedes-Benz dealership. Just call 1-800-387-0100. It's that simple.

Mercedes-Benz warranties

The Mercedes-Benz New Car Limited Warranty covers defects in materials or workmanship for 48 months or 80,000 km, whichever occurs first. To widen your window of confidence, you can opt for a Mercedes-Benz Extended Limited Warranty as well.²

Trip interruption reimbursement

If a breakdown covered by your New Car Limited Warranty occurs more than 80 km from your home, leaves your Mercedes-Benz vehicle inoperable or unsafe to drive, and requires overnight repairs, we've got you covered. You will be reimbursed up to \$500 for hotel accommodations and up to \$600 for alternate travel expenses per incident while your car is being repaired at an authorized Mercedes-Benz dealership.

Log on to learn more

mercedes-benz.ca

Looking for more Mercedes-Benz information? Visit mercedes-benz.ca to open an online window to Mercedes-Benz Canada. Get information about any model, including financing and leasing options, upcoming vehicles, or purchase Mercedes-Benz the Collection gifts and personal accessories. Our website also offers details about the Mercedes-Benz Extended Limited Warranty, Customer Care, and the history of Mercedes-Benz.



¹ Vehicle must be accessible from main roads. Roadside Assistance may involve charges for parts, service and towing. Depending on the circumstances, these services may be provided by an outside service provider, courtesy of Mercedes-Benz Roadside Assistance. For full details of the Roadside Assistance Program, please see your dealer. ² Please see your dealer for warranty details as well as for terms, conditions and pricing for extended warranty options.

© 2006 Mercedes-Benz Canada Inc. Marketing Communications.

All illustrations and specifications contained in this brochure are based on the latest product information available at the time of publication.

Mercedes-Benz reserves the right to make changes at any time, without notice, in colours, materials, equipment, specifications and models.

Any variations in colours shown are due to reproduction variations of the printing process. Illustrations may include test situations.

Some vehicles may be shown with non-Canadian equipment. Some vehicles are shown with optional equipment.

harman/kardon and LOGIC7 are registered trademarks of Harman International Industries Inc. iPod is a registered trademark of Apple Computer, Inc.

Printed in Germany

MBC-06-CL07-2

Mercedes-Benz Canada Inc. 98 Vanderhoof Avenue. Toronto, Ontario M4G 4C9

1-800-387-0100

www.mercedes-benz.ca

CL550 with optional 19" multi-spoke light-alloy wheels shown on cover.