

# FORD C-MAX + FORD GRAND C-MAX



Feel the difference

## Feel the difference

In a world of me-too products, the latest Fords really stand out. Award-winning design and amazing technology can be yours across the range. Take a test drive and feel the difference.

### 2-9 Ford kinetic Design

Ford kinetic Design is the reason why our vehicles look more exciting than ever before. Bold, dynamic lines that create energy in motion.

### 10-13 Quality

We design and build your Ford to feel as good after many years of service as it did the day you picked it up. And to drive just as beautifully, too.



### 14-15 Green

Using advanced Ford ECOnetic Technology, we're committed to creating vehicles with improved fuel economy, reduced CO<sub>2</sub> emissions and a lower overall cost of ownership.



### 16-17 Safe

Ford's Intelligent Protection System uses sophisticated technology designed to help prevent an accident and, if one should happen, to protect you.



### 18-19 Smart

Cars that park themselves, windscreen wipers that know when it's raining – just some of the many clever solutions from Ford that make life a little easier.



### 20-27 Choose your Ford C-MAX

- Zetec
- Titanium
- Grand Zetec
- Grand Titanium

### 28-35 Add those extra touches

- Objects of desire
- Wheels
- Infotainment
- Take a lot more

### 36 Ownership

### 37-43 Specifying your Ford C-MAX

### 44-45 Colour and trim





Do a lot more

The new Ford Grand C-MAX has practicality in its DNA. With dual sliding rear doors and seven seats, it helps you get the most out of family life.

**Note:** Model shown is the Grand C-MAX Titanium in MicaStone metallic paint (option), featuring Appearance Pack (option) and Titanium X Pack (option).





## Fit a lot in

Ford Grand C-MAX's spacious and versatile interior is packed with innovative features. The centre second row seat can be neatly stowed away to allow easy walkthrough to the third row seats. Power child locks on the sliding doors and seat belt reminders on all rear seats help ensure your family stays secure.

**Note:** Model shown is the Grand C-MAX Titanium with Sony DAB Navigation system with rear view camera. (option)





Go a lot further

Ford ECONetic Technologies give the Ford C-MAX and Grand C-MAX better fuel economy than you would expect from such spacious cars. Ford PowerShift dual clutch automatic transmission, EcoBoost fuel-efficient petrol engines and Duratorq TDCi advanced diesel engines all help you travel much further between fill-ups\*.

Note: Model shown is the Grand C-MAX Titanium in MicaStone metallic paint (option) featuring Appearance Pack (option) and Titanium X Pack (option).  
\*See fuel and performance table in the specifications section for full details of fuel economy and CO<sub>2</sub> emissions.





Turn a lot more heads

The new Ford C-MAX is not only a highly-capable car, it's also the latest evolution of Ford kinetic Design. In short, it's the perfect blend of style and substance.

Model shown is a Ford C-MAX Titanium in Mars Red metallic paint (option) with Privacy Glass (option) and Titanium X Pack (option).





**Relentless testing**

Ford C-MAX and Grand C-MAX have been tested to endure a level of punishment far beyond the stresses and strains of everyday driving. For example, a total of 37 complete suspension systems were tested for the equivalent of 13 million kilometres under arduous conditions to ensure each component will stand the test of time.

**World-class dependability**

Our test vehicles were put through rigorous trials that included slamming the doors, tailgates and bonnets more than 300,000 times, spraying them with salt, dust and dirt, and subjecting them to temperatures ranging from -40°C to +80°C. Our aim? You can depend on Ford C-MAX and Grand C-MAX wherever in the world you are.



The attention to detail which has been lavished on Ford C-MAX and Grand C-MAX is immediately evident, from the exterior finish to the quality of the interior. Ford has engineered every single component for dependability, safety and strength with one objective clearly in mind – quality that's built to last.

**Proven quality**



**Pushing the limits**

From the deep cold of a Scandinavian winter to the searing heat of the desert, the Ford C-MAX and Grand C-MAX team spent countless hours in our climate test laboratory developing, testing and pushing the boundaries so your new car performs faultlessly, whatever the conditions.



**Only the best**

Premium leather seat trim with specially-designed stitching brings an added sense of luxury. (Included as part of the optional Titanium X Pack)



**No detail too small**

Not just great to drive, but it's great to sit in too, thanks to a leading-edge interior design, high-quality materials and first class fit and finish.



**Obsessively driven**

During their development, we test drove the Ford C-MAX and Grand C-MAX the equivalent of 112 times around the globe. They are cars you can rely on, right down to the smallest ball bearing.



- 12,999,976 km
- 9,136,765 km
- 1,276,765 km
- 499,892 km
- 245,066 km
- 112,907 km
- 36,765 km
- 24,159 km
- 7899 km
- 2408 km
- 76 km



### Same sky, better view

Enjoy a brighter, more airy interior with a full-length glass panorama roof. A Solar Reflect coating helps keep the interior cool, while a power-operated internal blind provides shade and privacy when required. (Option, as part of Titanium X Pack)

### Torque Vectoring Control

Torque Vectoring Control improves traction, roadholding and agility when cornering by continuously optimising the engine torque distributed to each front wheel to match the amount of grip each has available. The result is greater control, particularly under difficult conditions. (Standard)

<sup>®</sup>Uses sensors.

Wherever life takes you, the new Ford C-MAX and Grand C-MAX will make getting there a pleasure. Designed to be as rewarding to drive as it is versatile and accommodating, there's simply no better place for you and your family to be.

A great place to be



### Designed for driving

The instrument panel puts the most important controls and information displays exactly where you need them. Better still, it looks and feels stunning.

### Feel the power, not the shift

Using the very latest gearbox technology, Ford PowerShift delivers the perfect combination between the convenience of an automatic and the performance normally associated with a manual. This new 6-speed dual clutch automatic transmission cleverly selects the next appropriate gear at precisely the right moment for lightning-fast gear changes, with no disruption to the flow of power. Fuel economy is improved, compared to a conventional automatic too<sup>1</sup>. It also has a manual mode that allows you to switch gears at the flick of the shifter, but without the need for a clutch pedal. (Option)

<sup>1</sup>Combined figure for Ford C-MAX with 2.0 Duratorq TDCi (140 PS) engine with PowerShift is 50.4 Mpg.

### Boosting efficiency

Our turbo diesel engines include the 1.6 Duratorq TDCi 115 PS, with combined fuel consumption of 61.4 mpg\*. These are now joined by a high-efficiency EcoBoost petrol engine, which combine higher power with reduced emissions and lower fuel consumption. The 1.6 EcoBoost 150 PS delivers combined fuel consumption of 44.1mpg\*.

\*Figures for Ford C-MAX with standard 6-speed manual transmission.



### Steering that adapts to its environment

Ford C-MAX and Grand C-MAX's sophisticated Electric Power-Assisted Steering (EPAS) achieves a balance that's just not possible with conventional power steering systems. At parking speeds, full power is delivered for feather-light manoeuvring. Once you're on the move, it steadily weights up to just the right extent for optimum feel and control.



### Hill Start Assist

Briefly keeps the car still so you can hill start without using the handbrake. (Standard on Titanium)





Ford ECONetic Technology is designed to reduce your cost of ownership through improved fuel economy and lower CO<sub>2</sub> emissions, without any compromise on style or driving quality. Much of this technology is brought together in our ECONetic models, which deliver some of the lowest fuel consumption and CO<sub>2</sub> emissions in the Ford range. In the near future our ECONetic Technology will expand to include electric and hybrid-electric vehicles, biofuel-capable vehicles, plug-in hybrids and hydrogen fuel cell-powered vehicles.

What can Ford ECONetic Technology do for you?



#### Ford ECONetic Technology

- Ford EcoBoost fuel-efficient petrol engines (see right)
- Ford Duratorq TDCi advanced diesel engines – provide exceptional fuel economy and low CO<sub>2</sub> emissions
- Ford PowerShift dual clutch automatic transmission – combines the efficiency of manual transmission with the convenience of a conventional automatic
- Ford Auto-Start-Stop (see right)
- Ford Smart Regenerative Charging – Saves fuel by charging the battery only when you are not pressing the accelerator
- Ford Electric Power-Assisted Steering – a more efficient system that uses less engine power
- Active Grille Shutter – improves aerodynamics and lowers fuel consumption
- Ford Eco Mode driver information system – shows you when you're achieving optimum fuel efficiency
- Shift Indicator – advises you when to change gear for maximum fuel efficiency

#### Ford EcoBoost

With direct petrol injection, turbocharging and variable valve timing, Ford EcoBoost engines deliver power and torque consistent with larger displacement engines. For example, the 1.6 150 PS EcoBoost petrol engine in the new C-MAX and Grand C-MAX has more power than the 2.0 Duratec petrol engine it replaces, and yet it achieves around 9% better fuel economy and lower CO<sub>2</sub> emissions.

#### Ford Auto-Start-Stop

When your vehicle is idling at a standstill, the engine automatically shuts down to save fuel consumption. When you want to drive off, the engine immediately restarts.

#### Electric and Hybrid vehicles

Our electrically-powered vehicles will produce zero emissions. Rechargeable through wall outlets and targeted to get up to 100 miles per charge, they'll be ideal for a daily commute and trips around town. In addition, two next-generation hybrid models are under development.



### Working for a cleaner tomorrow

At Ford, we've been quietly and consistently reducing our impact on the environment. Here are just a few headlines:

- Since 2000, we've reduced manufacturing plant energy consumption by over 27% and CO<sub>2</sub> emissions by 31% worldwide
- Between 2003 and 2008, Ford reduced water consumption in its plants across Europe by 40%
- Solar/photovoltaic panels on the roof of our Bridgend engine plant in the UK generate enough power to light an area of around 10,000 square metres
- Almost 300 parts used in European Ford vehicles are made from recycled non-metallic materials – potentially avoiding 17,000 tonnes of waste going to landfill sites every year

All electricity needed to power Ford's Dagenham Diesel Centre is provided by three wind turbines, each over 85m high. With a combined maximum output of 5.9MW, they generate over 11.4million KWh of electricity every year, enough to power around 3400 homes.

Our Cologne plant utilises hydro-electric power from Norway and Sweden. This reduces CO<sub>2</sub> emissions by 190,000 tonnes a year. Shipping their finished vehicles on Rhine river barges means fewer truck journeys and less fuel consumed to further reduce CO<sub>2</sub> emissions.



If you wish to know more, logon to:  
[ford.com/go/sustainability](http://ford.com/go/sustainability)



**Play it safe**

Beneath a stylish exterior is an ultra-rigid safety cell, engineered to cocoon you and your passengers wherever the journey takes you.

Available as part of cruise control, this system lets you set your top speed within a range of 20 to 110 mph. The engine management system ensures the vehicle remains within your set limit. (Standard on Titanium)

**Active Speed limiter**



Ford C-MAX and Grand C-MAX's advanced Intelligent Protection System (IPS) uses a range of sophisticated technologies to keep you protected, including an ultra-high strength steel safety cage, an anti-lock braking system (ABS) with electronic brake-force distribution (EBD) and front, side thorax and curtain airbags.

**Intelligent Protection System**



**The Ford C-MAX and Grand C-MAX IPS includes:**

1. Driver and front passenger's\* airbags\*
2. Driver and front passenger's side thorax airbags
3. Side curtain airbags for both front and outer second-row rear passengers
4. Robust computer-optimised body structure with ultra-rigid safety cell and crumple zones
5. Advanced lap and diagonal inertia reel seat belts on all seats. Pre-tensioners, load-limiting retractors and height-adjustable mounts on front seats
6. ISOFIX child seat mountings on second row rear outer seats
7. Anti-submarining seat bases
8. Anti-lock brakes (ABS) with electronic brake-force distribution (EBD)
9. Electronic Stability Programme (ESP) and Traction Control
10. Emergency Brake Assist (EBA) (included with ESP)
11. Emergency Brake Warning: the brake lights automatically flash under heavy braking as a warning to following drivers
12. Collapsible (horizontal-stroking) steering column for optimised energy absorption and leg protection

\*Note: A child seat should never be placed in the front passenger seat when the Ford vehicle is equipped with an operational front passenger's airbag. The safest place for children is properly restrained on the second-row seats

\*A passenger airbag deactivation switch is available as a Dealer-fitted option.

**Power child locks**

Secure your most precious cargo with a flick of a switch on the driver's door. (Standard on C-MAX Titanium and all Grand C-MAX)

**Second and third row seat belt reminder system (Grand C-MAX)**

To ensure the safety of your second and third row passengers, visual and audible warnings alert you if a seat belt is unfastened whilst on the move. (Standard on Grand C-MAX)

**The high life**

Ford C-MAX and Grand C-MAX's elevated seating position and generous glass area give everyone on board a great view of the outside world.





**Sliding rear doors (Grand C-MAX)**

Designed to open and close smoothly with one hand, the sliding doors make life much easier. Getting small children in and out requires less effort, while tight spaces and concrete pillars in car parks are no longer a problem.

**Note:** The images in this brochure show some features not currently available in the UK. Please refer to the specification pages for more details.



Select reverse gear and the rear-view camera activates automatically in the Sony DAB navigation display, allowing you to see objects behind your car. Special guidance graphics indicate the width and centre line of the car, based on the steering angle, for safer and easier manoeuvring. (Included with optional Sony DAB Navigation)

**Rear-view camera**

The new Ford C-MAX and Grand C-MAX have some of the most advanced technology you can find on a car. Here are a few of the insightful features that can make every journey safer and easier.

That's clever!

**Fold flat system**

Second and third row seats fold flat in seconds, creating a spacious load area. Second row seats also slide forward and back to optimise leg room, while the seat backs tilt for improved comfort. The centre seat in the second row easily folds away to create a walk-through to the third row, or to provide a spacious 2+2+2 layout.

**Auto-Start-Stop**

Automatically switches off the engine when you come to a halt and restarts smoothly when you want to move off, reducing fuel consumption and CO<sub>2</sub> emissions by up to ten per cent\*. (Standard on 1.6 EcoBoost only)

\*Auto-Start-Stop can reduce fuel consumption and CO<sub>2</sub> emissions by up to five per cent in mixed driving conditions. In an urban environment and in heavy traffic with frequent stops the savings could increase to as much as ten per cent. (Ford test figures)

**Ford Eco Mode driver information system**

This smart software monitors your driving style and displays its impact on the car's fuel economy. Floor the throttle and you'll receive a low score; drive efficiently and you'll be rewarded with a high score – and reduced running costs.

**Active Park Assist**

Ultrasonic sensors confirm whether a gap is large enough to park in, and then operate the steering while you control the pedals. (Option as part of the Convenience Pack)

**Power tailgate**

Can be opened with the tailgate handle, key fob or from the front seats. It can be programmed to open to your preferred height and will automatically stop closing if it senses an object in the way. (Option, as part of Zetec Family Pack and Titanium Family Pack)

**Blind Spot Information System**

This high-tech visual aid is designed to make longer journeys a far more relaxing experience. As another vehicle – a car, van or lorry – enters your blind spot, it alerts you with a discreet warning light built into the driver's and passenger's door mirrors. (Included as part of the optional Convenience Pack Plus)





# C-MAX Zetec



The Ford C-MAX Zetec makes a great impression inside and out, with its eye-catching style and added refinements.

### C-MAX Zetec

- Thatcham Category 1 alarm
- FordEasyFuel – capless refuelling
- 16" 5-spoke alloy wheels
- Ford DAB audio system
- Bluetooth and USB connectivity
- Quickclear heated windscreen
- Body colour door mirrors with integrated side indicators
- Body colour door handles
- Electrically-operated front windows
- Air conditioning
- Trip computer
- Rake- and reach-adjustable steering column
- Auxiliary power socket
- Lumbar adjustment on driver seat
- Front-to-rear curtain airbags
- ISOFIX child safety seat attachments on 2nd row outer seats
- Front fog lights

Image shows Ford C-MAX Zetec in Mars Red metallic paint (option).

**Air conditioning**  
(Standard)

**Auxiliary power socket**  
(Standard)

**Lower front grille with chrome surround**  
(Standard)

**Body colour door handles**  
(Standard)

**Ford Easy-Fuel capless refuelling system**  
(Standard)

**Body colour door mirrors with integrated side indicators**  
(Standard)







## C-MAX Titanium



Surround yourself with contemporary luxury and technical innovation in the stunning new Ford C-MAX Titanium.

### C-MAX Titanium (additional to C-MAX Zetec)

- 17" 15-spoke alloy wheels
- Sony DAB audio system
- Bluetooth and USB connectivity
- Gloss black upper and lower front grilles
- Electrically-operated front and rear windows with 'bounce-back' anti-trap feature and global closing
- Dual-zone Electronic Automatic Temperature Control (DEATC)
- Instrument cluster with Human-Machine Interface (HMI) display
- Ford Power starter button
- Auto-dimming rear-view mirror
- Ambient lighting in front compartment
- Leather gearshift knob and steering wheel
- Front seat back folding tables
- Hill Start Assist
- Rain sensing front wipers
- Automatic headlights
- Power-operated rear door child locks
- Cruise control with active speed limiter
- Deflation detection system
- Premium front and rear floor mats

Image shows Ford C-MAX Titanium in MicaStone metallic paint (option).

**Dual-zone Electronic Automatic Temperature Control (DEATC)**  
(Standard)

**Auto-dimming rear-view mirror**  
(Standard)

**Ford Power Starter Button**  
(Standard)

**Satin chrome side window finisher**  
(Standard)

**Ambient interior lighting**  
(Standard)

**Automatic headlights and auto-wipers**  
(Standard)





# Grand C-MAX Zetec



When you need more space, the Grand C-MAX Zetec gives you all the flexibility you want. With seven seats, no-one will be left behind.

## Grand C-MAX Zetec

- Dual sliding rear doors
- Thatcham Category 1 alarm
- Rear parking sensors
- Power-operated rear door child locks
- Second and third row seat belt reminder system
- Foldaway centre seat in the second row
- Ford Easy-Fuel – capless refuelling
- 16" 5-spoke alloy wheels
- Ford DAB audio system
- Bluetooth and USB connectivity
- Quickclear heated windscreen
- Electrically-operated front and rear windows with 'bounce-back' anti-trap feature and global closing
- Air conditioning
- Trip Computer
- Rake and Reach adjustable steering column
- Auxiliary power socket
- Front-to-rear curtain airbags
- ISOFIX child safety seat attachments on 2nd row outer seats
- Front fog lights
- Tonneau cover

Image shows Ford Grand C-MAX Zetec in Panther Black metallic paint (option).

Sliding rear doors  
(Standard)

Luggage compartment tonneau cover  
(Standard)

Ford Easy-Fuel capless refuelling system  
(Standard)

Electrically-operated front and rear windows  
(Standard)

Driver's seat lumbar support  
(Standard)

Rear parking sensors  
(Standard)





# Grand C-MAX Titanium



With seating for up to seven, the sophisticated Grand C-MAX Titanium leads the way in comfort and technology. Because you can never have too much of a good thing.

## Grand C-MAX Titanium (additional to Grand C-MAX Zetec)

- 16" 10-spoke alloy wheels
- Sony DAB audio system
- Bluetooth and USB connectivity
- Gloss black upper and lower front grilles
- Dual-zone Electronic Automatic Temperature Control (DEATC)
- Instrument cluster with Human-Machine Interface (HMI) display
- Ford Power starter button
- Auto-dimming rear-view mirror
- Ambient lighting in front compartment
- Leather gearshift knob and steering wheel
- Hill Start Assist
- Rain sensing front wipers
- Automatic headlights
- Cruise control with active speed limiter
- Deflation detection system
- Premium front and rear floor mats
- Power fold door mirrors

Image shows Ford Grand C-MAX Titanium in Micastone metallic paint (option).

**Dual-zone Electronic Automatic Temperature Control (DEATC)**  
(Standard)

**Auto-dimming rear-view mirror**  
(Standard)

**Ford Power Starter Button**  
(Standard)

**Deflation Detection System**  
(Standard)

**Sony DAB audio system with USB connectivity**  
(Standard)

**Automatic headlights and rain sensing front windscreen wipers**  
(Standard)







**Luxury leather seats**

Heated leather seats with power-adjustable driver's seat. (Included as part of Titanium X pack)

**Cruise control**

With steering wheel-mounted controls for extra comfort and convenience. (Standard on Titanium)



The new Ford C-MAX and Grand C-MAX are no ordinary cars. While offering the highest levels of comfort, quality and versatility as standard, you will find an impressive list of optional features designed to adapt perfectly to your lifestyle.

**Objects of desire**



**Bi-xenon HID headlights**

Ford C-MAX and Grand C-MAX's Bi-xenon HID headlights are more than twice as powerful as conventional headlights, but use only two-thirds of the energy. Also includes static cornering lights and headlight washers. (Included as part of the optional Titanium X Pack)

**Rear parking sensors**  
An audible warning helps you safely judge the distance between the rear of your car and an obstacle for easier parking and manoeuvring. (option on C-MAX, standard on Grand C-MAX)

**Integrated sunblinds**  
Neatly hidden within the rear doors when not in use, the integrated sunblinds can be easily raised to protect rear occupants from the sun's rays. (Option, included as part of Family Pack)

**Rear privacy glass**  
Dark glass in rear windows for privacy and reduced glare. (Option on C-MAX, part of Appearance Pack on Grand C-MAX)

**Illuminated scuff plates**  
Stainless steel front scuff plates with blue LED-illuminated C-MAX logo both welcome you on board and protect the paintwork. (Accessory for Titanium only)

**Rear bumper protection strip**  
High-quality clear film protects the rear bumper from everyday scuffs and scratches. (Accessory)

**Fog lights**  
Cut through the gloom with Ford C-Max's powerful front fog lights.





**Ford Individual 17" alloy wheel**

Eye-catching 5x2-spoke alloy wheels, with a unique premium 'luster-nickel' look finish, offer the ultimate synthesis of sportiness and top-level exclusivity. (Option and accessory, available from early 2012)

**Eibach suspension-lowering kit**

Enhances driving performance and handling as well as giving a more sporty appearance. Lowers the car by approximately 30 mm. (Accessory)



Take your pick from a range of sophisticated alloy wheels, each specially designed to enhance the dynamic lines of the new Ford C-MAX.

**Wheels**

**Scuff plates**

Polished stainless steel front scuff plates with 'C-MAX' logo both welcome and protect. (Accessory)



**Standard** = Standard on your vehicle.  
**Option** = Can be ordered only together with your new vehicle.  
**Accessory** = Available from your Ford Dealer.

**Note** The 18" wheels and tyres available on Ford C-MAX are designed to deliver more sporting driving characteristics and a firmer ride quality compared to 16" and 17" wheels and tyres.

**16" 5-spoke 'Y-design' alloy wheel**  
(Standard on Zetec and available as an accessory)



**16" 7x2-spoke alloy wheel**  
(Accessory)



**16" 10x2-spoke alloy wheel**  
(Standard on Grand C-MAX Titanium and also available as an accessory).



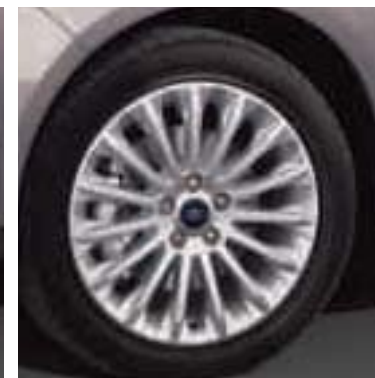
**17" 5x2-spoke alloy wheel**  
(Accessory)



**Ford Individual 17" 5x2-spoke 'luster-nickel' look finish alloy wheel**  
(Option and accessory, available from early 2012)



**17" 15-spoke alloy wheel**  
(Standard on C-MAX Titanium and available as an accessory)



**18" 7-spoke alloy wheel**  
(Option and accessory)





**Sony DAB audio systems**

Sony DAB audio system with digital technology features a 4.2" TFT screen, CD player, remote audio controls, 9 premium speakers, MP3 playback capability, external AUX jack and USB connectivity port. (Standard on Titanium)

**Toggle controls**

Steering wheel-mounted toggle controls let you operate the audio system and trip computer without taking your hands off the wheel.



Fill your new Ford C-MAX or Grand C-MAX with state-of-the-art sound – and connect to the outside world – with a choice of superb audio, navigation and entertainment systems. Easy to use and with exceptional performance, you don't have to think about the technology. Just sit back and enjoy it.

**Infotainment**

**Portable navigation**

Leave your maps behind with a simple and intuitive mobile GPS navigation system. Please contact your Ford dealer for details. (Accessory)



**Ford DAB Audio**

DAB audio, stereo radio/CD player with 3.5" multifunctional display, remote audio controls and 6 speakers. Features include MP3 compatibility, AUX jack and USB connectivity port. (Standard on Zetec)

**Ford DAB Navigation**

DAB Audio, SD navigation system featuring a 5" TFT display and easy-to-follow audio-visual directions. (Option)

**Sony DAB Navigation**

Sony DAB navigation system featuring a 5" TFT screen, enhanced instrument cluster navigation display with easy-to-follow route guidance and standard rear-view camera. (Option)

**Note:** The Bluetooth® word mark and logos are owned by the Bluetooth SIG, Inc. and any use of such marks by Ford Motor Company Limited and its associated companies is under licence. iPod® is a trademark of Apple Inc. Other trademarks and trade names are those of their respective owners.

**Note:** It is an offence for drivers to use a hand-held mobile phone or similar device while driving.

Please see your Ford Dealer for phone compatibility or visit [www.ford-mobile-connectivity.com](http://www.ford-mobile-connectivity.com)

**MP3 connection**

Connect your iPod®, MP3 player or USB stick and operate it via your Ford audio system – with track information shown on your audio display. A dedicated connector cable is available as an accessory for operating most iPods®.

**Bluetooth® wireless technology**

Allows Bluetooth®-compatible phones to communicate wirelessly with the car's audio or navigation system so you can make and receive calls safely and easily while on the move. Also available with USB port. (Standard on mid-line radio/CD and above)





**Crossbars and roof rails (Grand C-MAX)**

Together with the stylish roof rails the crossbars form the perfect base for all roof transportation needs. (Accessory)

**Thule products for roof transportation**

Your Ford Dealer offers a wide range of high-quality Thule carrier systems and roof boxes (shown is the Dynamic 800 roof box). (Accessory)

**ClimAir® wind deflector**

Reduces turbulence and noise, allowing you a more enjoyable drive with the front windows down, even when it's raining. (Accessory)



Whatever your interests, you'll find a great range of options and accessories for your new Ford C-MAX or Grand C-MAX to help you make the most of every leisure opportunity.

Take a lot more

**1. Contoured mudflaps**

Available as sets for front and rear, these practical hard-wearing mudflaps protect the bodywork from stone chips, helping to keep your car clean by reducing road spray. (Accessory)

**2. Britax child seat with ISOFIX**

Various child seats available for all ages. (Accessory)

**3. Floor mats for all purposes**

Available in premium velour, standard carpet or rubber. (Option and accessory)

**4. Roof base carrier (C-MAX)**

This lockable aluminium carrier forms the base for all roof transportation attachments. (Accessory)

**5. Rear bumper protection foil**

Keep your rear bumper free from scratches with this transparent protection foil. (Accessory)

**6. Tow bar-mounted Twinny Load® bike carrier**

(Accessory)



\*Meets European ECE-R17.07/DIN 75410-2 safety requirements.

This brochure shows both original Ford accessories as well as a range of carefully selected products from third party suppliers, which are identified under that third party supplier's brand name. Please note that third party supplier branded accessories do not come with a Ford warranty but are covered by the third party suppliers own warranty, the details of which can be obtained from your Ford Dealer.

**3D rear floor mats (Grand C-MAX)**

Special single-piece 3-dimensional design for perfect fitment and protection. (Accessory)

**Reversible and foldable luggage compartment mat**

Reversible design offers choice of velour carpet or durable rubber surface. (Accessory)

**Loadspace liner**

Durable liner, designed to keep the luggage compartment clean and tidy, ideal for transporting wet or dirty items. (Accessory)

**Luggage retention net\* (Grand C-MAX)**

This durable retention net keeps your items secure in the luggage compartment while you're on the move. (Accessory)

**Dog guard system\* (Grand C-MAX)**

Half-height or full-height, this modular system keeps dogs or items of luggage safely in the luggage compartment. (Accessory)

**Retractable tow bar**

The sturdy tow bar is there when you need it, but can be tucked away out of sight for uncompromised styling and easier access to the luggage compartment. (Option and Accessory)





# Making life easy

Our range of finance, insurance, service and assistance options is designed with just one thing in mind – making life easy for you.

## Ford Credit

When it comes to financing your vehicle, our size and expertise means we're well placed to provide you with a range of finance plans. An application for finance is straightforward and you'll usually get a decision within 15 minutes.

So what can your Ford Dealer provide?

**Ford Options** offers the flexibility to renew your Ford at anytime during your agreement - you're in complete control. At the end of the agreement you can Renew, Return or Retain your Ford.

**Ford Options Cashplan** provides all of the flexibility of Ford Options whilst freeing you from the need to make regular payments.

**Ford Acquire** is ideal if you're a private or business user who wants a traditional and convenient financing plan to own your vehicle. Simply put down a deposit, pay the remainder, plus interest, over an agreed period and the vehicle becomes yours.

**Ford Lease\*** provides simple, tailored funding solutions for your business, whatever the size. Business users only.

**Ford Insure\*\*** is our comprehensive motor insurance product, designed specifically for Ford drivers.

For more information on our finance products please visit [ford.co.uk](http://ford.co.uk).

Finance subject to status. Guarantees/indemnities may be required, Freeport Ford Credit.

\*Ford Lease is provided by ALD Automotive Ltd, trading as Ford Lease, Oakwood Park, Lodge Causeway, Fishponds, Bristol, BS16 3JA. ALD Automotive is registered in England No. 987418. For the purposes of the Data Protection Act 1998 the data controllers in relation to any information you supply are Ford Motor Company Limited, FCE Bank Plc and ALD Automotive. Finance subject to status. Guarantees and indemnities may be required. ALD Automotive is authorised and regulated by the Financial Services Authority.

\*\*Ford Insure is underwritten and administered by Royal & Sun Alliance Insurance plc, which is authorised and regulated by the Financial Services Authority. FCE Bank plc is authorised and regulated by the Financial Services Authority and acts as an insurance intermediary in relation to Ford Insure. In relation to this same product, Ford Motor Company Limited is an appointed representative of FCE Bank plc. Ford Motor Company Limited acts as an insurance intermediary. Calls may be recorded and monitored.

## Configure your Ford & apply for finance online

Choose and change bodystyle, colour, trim and options, and instantly see how your new Ford will look from many angles. You can even get a price and finance quotation for your configured car and apply for finance with Ford Credit online.



## Services

### Ford Protect

Your new Ford is protected by a 3-year/60,000-mile Ford Protect Classic Plan Warranty, and comes with Ford Assistance roadside cover throughout the UK and Europe for 1 year. You can also upgrade to a Ford Protect Premium Plan, giving you the option of scheduled servicing and extended Ford Assistance.

### Ford Service

Like any vehicle, your new Ford needs servicing regularly to keep it in the best condition and to maintain its value. The Ford authorised repairer network is independently quality checked to ensure the highest standards of workmanship are maintained. Ford has the largest repairer network in the UK, and uses Ford-trained technicians, Ford-specific tools and the latest computerised diagnostic equipment specifically for your Ford.

### Ford Accident Repair Centres

Should your Ford require accident repair, an approved Ford Accident Repair Centre is the best place to return your vehicle to its pre-accident condition. Repairers displaying the Ford Accident Repair Centre sign meet the rigorous customer service, technical and quality standards demanded by Ford. Ford trained technicians, the latest repair equipment and the use of original parts mean that the future safety and value of your vehicle are assured.

## Contacts

### Ford Customer Relationship Centre

In the unlikely event that your Ford Dealer can't help you or if you need to speak to us directly, call 0845 841 1111 at local rates.

### Ford Rental – local service nationwide

Car and van rental from our latest model range. Contact your local Ford Dealer for more information.

### Ford Mobility

Our dedicated care centre provides free information on all motoring and mobility issues, including special offers for HRDLA and Motability recipients.

Call us on 0845 6040019 at local rates.

# Equipment

## Exterior equipment 5-Seat C-MAX/7-Seat Grand C-MAX

	Zetec	Titanium
<b>Exterior design features</b>		
Door mirrors – Body colour housing, heated, electric operation, integrated side indicator	●/●	●/–
Door mirrors – Body colour housing, heated, electric operation, power fold, integrated side indicator, approach lights	–/–	□/●
Doors – Sliding rear passenger's (Grand C-MAX only)	–/●	–/●
Front fog lights	●/●	●/●
Rear privacy glass – Dark glass on the rear windows	○/○	○/○
Roof rails – Silver finish (Grand C-MAX only)	–/○	–/○
Retractable tow bar (including 13-pin electrical kit)	○/○	○/○
<b>Wheel availability</b>		
16" Alloy – 16"x7", 5-spoke 'Y' finish, 205/55 tyres	●/●	–/–
16" Grand C-MAX (Titanium) Alloy – 16"x7", 10-spoke, 205/55 tyres	–/–	–/●
17" 5-Seat C-MAX (Titanium) Alloy – 17"x7", 15-spoke, 215/50 tyres. (Not available on Grand C-MAX)	–/–	●/–
18" Alloy – 18"x8", 7-spoke, 235/40 tyres (Not available with 1.6 Duratec Ti-VCT 125PS engine)	–/–	○/○
Tyre repair kit	●/●	●/●
Spare wheel – Mini steel wheel – fitted in lieu of the Tyre repair kit	○/○	○/○
Locking wheels nuts (only available with alloy wheels)	●/●	●/●
<b>Exterior convenience features</b>		
Ford Easy-Fuel capless refuelling system	●/●	●/●
Headlights – Automatic on/off – includes automatic wipers with rain sensor, variable dimming of instrument cluster and radio screen display, auto-dimming rear-view mirror, headlight courtesy delay	–/–	●/●
Rear parking distance sensors – Rear parking sensors are standard on Grand C-MAX	○/●	○/●
Tailgate wash/wipe	●/●	●/●
Wipers – Standard with 6-speed interval settings	●/●	–/–
Automatic wipers – Automatic with rain sensor (includes automatic headlights)	–/–	●/●
Quickclear, heated front windscreen – with heated windscreen washer jets	●/●	●/●
<b>Option packs</b>		
Convenience Pack – Active park assist, front and rear parking distance sensors, electric/heated and power fold door mirrors (power fold standard on Grand C-Max)	–/–	○/○
Convenience Pack Plus – Active park assist, front and rear parking distance sensors, electric/heated and power fold door mirrors (power fold standard on Grand C-Max), Blind Spot Information System (BLIS)	–/–	○/○
Zetec Family Pack – Power-operated tailgate and integrated rear door sunblinds	○/○	–/–
Titanium Family Pack – Power-operated tailgate, integrated rear door sunblinds and 230V/150W power converter	–/–	○/○
Appearance Pack – Silver finish roof rails and privacy glass (Grand C-MAX only)	–/○	–/○
Titanium X Pack – Leather trim, heated front seats, Bi-xenon headlights, fixed panorama roof, Solar Reflect windscreen and driver's 6-way electric seat adjustment (includes short overhead console with mood light, sunglasses holder and child observation mirror)	–/–	○/○

● = Standard, ○ = Optional, at extra cost, □ = Part of an option pack, at extra cost. The Bluetooth® word mark and logos are owned by the Bluetooth SIG, Inc. and any use of such marks by Ford Motor Company is under license. Other trademarks and trade names are those of their respective owners. **Note:** The 17" and 18" wheels available on Ford C-MAX are designed to deliver more sporting driving characteristics and a firmer ride quality compared to standard 16" wheels.



## Interior equipment 5-Seat C-MAX/7-Seat Grand C-MAX

	Zetec	Titanium
<b>Interior design features</b>		
Door lever – Satin chrome-finish (front only on Grand C-MAX)	●/●	●/●
Floor mats – Front, velour with 'Ford' tag	-/-	●/●
Floor mats – 2nd row rear, velour (3D design on Grand C-MAX)	-/-	-/●
Floor mats – 3rd row rear, velour with 'Ford' tag (Grand C-MAX only)	-/-	-/●
Gearshift knob – Leather finish	●/●	●/●
Scuff plates – Front, aluminium-finish, with 'Ford' logo	-/-	●/●
Steering wheel – 4-spoke, leather-trimmed	●/●	●/●
Steering column – Rake- and reach-adjustable	●/●	●/●
<b>Audio and communication systems</b>		
Remote audio controls	●/●	●/●
Ford DAB Audio System – 3.5" Dot Matrix display, extended integrated control panel, with USB/iPod connectivity port, external AUX connection for external music devices, remote audio controls, 6 speakers	●/●	-/-
Ford DAB Radio/CD Navigation system – 5" TFT display, extended integrated control panel, with USB/iPod connectivity port, external AUX connection for external music devices, 6 speakers, remote control and MFD controls, SD memory card slot for data (e.g. music) exchange; navigation data on SD card	○/○	-/-
SONY DAB Audio System – 4.2" TFT display, branded integrated control panel, with USB/iPod® connectivity port, external AUX connection for external music devices, remote audio and MFD controls, 9 premium speakers	-/-	●/●
Sony DAB Radio/CD Navigation System with Rear View Camera – SD navigation system with 5" TFT multi functional display, integrated control panel, with USB/iPod connectivity port, rear view parking camera, external AUX connection for external music devices in glovebox, 9 speakers, remote audio and MFD controls, SD memory card slot for data (e.g. music) exchange, navigation data on SD card	-/-	○/○
Rear-view parking camera – (included with Sony DAB Radio/CD Navigation system)	-/-	□/□
<b>Climate control</b>		
Air conditioning – Manual control	●/●	-/-
Air conditioning – Dual-zone electronic automatic temperature control (DEATC)	-/-	●/●
<b>Interior convenience features</b>		
Ford Power Starter Button	-/-	●/●
Cruise control (includes Adjustable Speed Limiting Device (ASLD))	-/-	●/●
Accessory power socket (12V)	●/●	●/●
Centre console – Mid, with sliding armrest, open stowage bins, CD storage, and additional 12V front and rear power sockets	●/●	-/-
Centre console – Premium, with sliding armrest, open stowage bins, CD storage, additional 12V front and rear power sockets, 2nd row airvents, and bright finish cup holder surrounds (includes woven headliner), Z-shape handbrake	-/-	●/●
Overhead console, expanded, with A5 stowage, mood light, sunglasses holder and child observation mirror (not available in combination with fixed panorama roof)	-/-	●/●
Courtesy light – For front and rear passengers, overhead LED lights, and in load compartment	●/●	●/●
Courtesy light – Ambient LED courtesy lighting	-/-	●/●
Courtesy light – Footwell area, front and rear reading lights	-/-	●/●
Rear-view mirror – Auto-dimming	-/-	●/●
Child observation mirror – located in overhead console	-/-	●/●
Stowage boxes – Two, underneath rear passenger's foot area (2nd row on Grand C-MAX only)	●/●	●/●
Trip/fuel computer, incorporating exterior air temperature	●/●	●/●
Windows – Electrically-operated front and rear with one-touch lowering/closing and global opening/closing	-/●	●/●

## Interior equipment 5-Seat C-MAX/7-Seat Grand C-MAX

	Zetec	Titanium
<b>Seats</b>		
Front seat – Driver's manual lumbar support adjustment	●/●	●/●
Front seat – Driver's manual height and fore/aft adjustment	●/●	●/●
Front seat – Passenger's manual fore/aft adjustment	●/●	-/-
Front seat – Passenger's manual lumbar support adjustment	-/-	●/●
Front seat – Passenger's manual height and fore/aft adjustment	-/-	●/●
Rear seats (C-MAX) – Three 2nd row individual seats, with height-adjustable head restraints, 'Tip and tumble' (all rear seats are foldable and removable) (Not available on Grand C-MAX)	●/-	●/-
Rear seats (Grand C-MAX) – Second row outer seats tip, slide (easy entry), recline and fold to create a flat floor. The centre seat folds away to create walk-through access to 3rd row seats	-/●	-/●
3rd Row, Rear seats (Grand C-MAX) – Two 3rd row individual fold-flat seats, with height-adjustable head restraints (seats are foldable to a flat floor), also with 3-point seat belts (Grand C-MAX only)	-/●	-/●
<b>Loadspace</b>		
Auxiliary power socket	●/●	●/●
Tonneau cover – (Grand C-MAX only)	-/●	-/●

● = Standard, ○ = Optional, at extra cost, □ = Part of an option pack, at extra cost. The Bluetooth® word mark and logos are owned by the Bluetooth SIG, Inc. and any use of such marks by Ford Motor Company is under license. Other trademarks and trade names are those of their respective owners. \*To check Bluetooth®-enabled phone compatibility please contact your local Ford Dealer, or visit [www.ford-mobile-connectivity.com/home](http://www.ford-mobile-connectivity.com/home)

## Safety and security 5-Seat C-MAX/7-Seat Grand C-MAX

	Zetec	Titanium
<b>Safety</b>		
Intelligent Protection System (IPS)	●/●	●/●
Anti-lock braking system (ABS) with electronic brake-force distribution (EBD)	●/●	●/●
Electronic Stability Programme (ESP) with Traction Control and Emergency Brake Assist (EBA)	●/●	-/-
Enhanced Electronic Stability Programme (ESP) with Traction Control, Emergency Brake Assist (EBA) and Hill Start Assist (HSA)	-/-	●/●
Emergency Brake Warning – Automatic flashing of the brake lights under heavy braking	●/●	●/●
Airbags – Driver and front passenger	●/●	●/●
Airbags – Front side impact	●/●	●/●
Airbags – Front and 2nd row curtain	●/●	●/●
Deflation Detection System (DDS) – Deflation Detection System (DDS)	-/-	●/●
<b>Security</b>		
Remote central/double locking	●/●	●/●
Power child locks – (Grand C-MAX only)	-/●	-/●
Thatcham Category 1 perimeter and volume sensing alarm	●/●	●/●

● = Standard, ○ = Optional, at extra cost, □ = Part of an option pack, at extra cost. \*Note: A child seat should never be placed in the front passenger seat when the Ford vehicle is equipped with an operational front passenger's airbag. The safest place for children is properly restrained on the second row seats.



## Mechanical features 5-Seat C-MAX/7-Seat Grand C-MAX

	Zetec	Titanium
<b>Steering</b>		
Power steering	●/●	●/●
<b>Suspension</b>		
Front – Independent with MacPherson struts and anti-roll bar	●/●	●/●
<b>Technology</b>		
Auto-Start-Stop system – standard on 1.6 EcoBoost engines	-/-	●/●

● = Standard.

## Fuel and performance

	Euro Stage	Trans	Maximum Power	Torque Nm (Nm with overboost)	CO <sub>2</sub> emissions (g/km) <sup>90</sup>	Fuel consumption <sup>90</sup>			Performance <sup>*</sup>		
						Urban	Extra Urban	Combined	Max. speed (mph)	0-62 mph (secs)	31-62 mph <sup>*</sup> (secs)
<b>5 Seat C-MAX</b>											
1.6 Duratec Ti-VCT (105 PS (77 kW))	Stage V	M5	105 (77)	150	154	32.5 (8.7)	53.3 (5.3)	42.8 (6.6)	112	12.6	15.5
1.6 Duratec Ti-VCT (125 PS (92 kW))	Stage V	M5	125 (92)	159	154	32.5 (8.7)	53.3 (5.3)	42.8 (6.6)	117	11.5	13.9
1.6 EcoBoost SCTi (150 PS (110 kW)) [Auto Start-Stop]	Stage V	M6	150 (110)	240	149	35.3 (8.0)	53.3 (5.3)	44.1 (6.4)	127	9.4	8.8
1.6 Duratorq TDCi (115 PS (85 kW))	Stage V + DPF	M6	115 (85)	270	119	52.3 (5.4)	68.9 (4.1)	61.4 (4.6)	114	11.3	11.2
2.0 Duratorq TDCi (140 PS (103 kW))	Stage V + DPF	A6	140 (103)	320	149	39.8 (7.1)	58.9 (4.8)	50.4 (5.6)	124	10.1	n/a
2.0 Duratorq TDCi (140 PS (103 kW))	Stage V + DPF	M6	140 (103)	320	139	44.1 (6.4)	64.2 (4.4)	55.4 (5.1)	125	9.6	9.2
<b>7 Seat Grand C-MAX</b>											
1.6 Duratec Ti-VCT (125 PS (92 kW))	Stage V	M5	125 (92)	159	159	31.7 (8.9)	49.6 (5.7)	40.9 (6.9)	115	12.3	14.4
1.6 EcoBoost SCTi (150 PS (110 kW)) [Auto Start-Stop]	Stage V	M6	150 (110)	240	154	34.5 (8.2)	51.4 (5.5)	42.8 (6.6)	126	9.9	9.4
1.6 Duratorq TDCi (115 PS (85 kW))	Stage V + DPF	M6	115 (85)	270	129	48.7 (5.8)	64.2 (4.4)	57.7 (4.9)	112	12.3	11.3
2.0 Duratorq TDCi (140 PS (103 kW))	Stage V + DPF	A6	140 (103)	320	154	38.2 (7.4)	56.5 (5.0)	48.7 (5.8)	123	10.5	n/a
2.0 Duratorq TDCi (140 PS (103 kW))	Stage V + DPF	M6	140 (103)	320	139	42.8 (6.6)	62.8 (4.5)	53.3 (5.3)	124	10.1	9.3

<sup>\*</sup>In 4th gear. <sup>90</sup>Ford test figures. <sup>90</sup>The declared fuel consumptions and CO<sub>2</sub> emissions are measured according to the technical requirements and specifications of European Directive 80/1268/EEC or the European Regulation (EC) 715/2007 amended by (EC) 692/2008. Fuel consumption and CO<sub>2</sub> emissions are specified for a vehicle type and not for a single car. The applied standard test procedure enables to compare between different vehicle types and different manufacturers. This information is not part of any product offer made. Real world fuel consumption can vary as the fuel efficiency of a vehicle is influenced by (individual) car configurations, driving behaviour, use of technical equipment such as air conditioning, as well as other non-technical factors. **DPF** = Diesel Particulate Filter. All petrol engines are equipped with a catalytic converter. **M5** = 5-speed manual, **M6** = 6-speed manual, **A6** = 6-speed PowerShift Automatic.

## Weights and loads

	Euro Stage	Kerbweight (kg)	Gross Vehicle Mass (kg)	Gross Train Mass (kg)	Max. Towable Mass (braked) (kg)	Max. towable Mass (kg)
<b>5 Seat C-MAX</b>						
1.6 Duratec Ti-VCT (105 PS (77 kW)), Durashift 5-speed manual	Stage V	1374	1860	2660	800	685
1.6 Duratec Ti-VCT (125 PS (92 kW)), Durashift 5-speed manual	Stage V	1374	1860	2860	1000	685
1.6 EcoBoost SCTi (150 PS (110 kW)) [Auto Start-Stop], Durashift 6-speed manual	Stage V	1385	1900	3400	1500	690
1.6 Duratorq TDCi (115 PS (85 kW)), Durashift 6-speed manual	Stage V + DPF	1390	1915	3115	1200	695
2.0 Duratorq TDCi (140 PS (103 kW)), PowerShift 6-speed automatic	Stage V + DPF	1488	2050	3550	1500	740
2.0 Duratorq TDCi (140 PS (103 kW)), Durashift 6-speed manual	Stage V + DPF	1488	2050	3550	1500	740
<b>7 Seat Grand C-MAX</b>						
1.6 Duratec Ti-VCT (125 PS (92 kW)), Durashift 5-speed manual	Stage V	1477	2135	2885	750	735
1.6 EcoBoost SCTi (150 PS (110 kW)) [Auto Start-Stop], Durashift 6-speed manual	Stage V	1496	2200	3400	1200	745
1.6 Duratorq TDCi (115 PS (85 kW)), Durashift 6-speed manual	Stage V + DPF	1504	2200	3400	1200	750
2.0 Duratorq TDCi (140 PS (103 kW)), PowerShift 6-speed automatic	Stage V + DPF	1634	2300	3800	1500	750
2.0 Duratorq TDCi (140 PS (103 kW)), Durashift 6-speed manual	Stage V + DPF	1575	2300	3800	1500	785

<sup>\*</sup>Represents the lightest kerbweight assuming driver at 75 kg, full fluid levels and 90% fuel levels, subject to manufacturing tolerances and options, etc., fitted. **Towing limits** quoted represent the maximum towing ability of the vehicle at its Gross Vehicle Mass to restart on a 12 per cent gradient at sea level. The performance and economy of all models will be reduced when used for towing. **Nose weight limit** is a maximum of 75 kg on all models. **Gross Train Mass** includes trailer weight.



## Insurance Groups

	Zetec	Titanium
<b>5 Seat C-MAX</b>		
1.6 Duratec Ti-VCT (105 PS (77 kW)), Durashift 5-speed manual	11	–
1.6 Duratec Ti-VCT (125 PS (92 kW)), Durashift 5-speed manual	–	14
1.6 EcoBoost SCTi (150 PS (110 kW)) [Auto Start-Stop], Durashift 6-speed manual	–	19
1.6 Duratorq TDCi (115 PS (85 kW)), Durashift 6-speed manual	16	16
2.0 Duratorq TDCi (140 PS (103 kW)), PowerShift 6-speed automatic	–	20
2.0 Duratorq TDCi (140 PS (103 kW)), Durashift 6-speed manual	–	20
<b>7 Seat Grand C-MAX</b>		
1.6 Duratec Ti-VCT (125 PS (92 kW)), Durashift 5-speed manual	13	14
1.6 EcoBoost SCTi (150 PS (110 kW)) [Auto Start-Stop], Durashift 6-speed manual	–	19
1.6 Duratorq TDCi (115 PS (85 kW)), Durashift 6-speed manual	16	16
2.0 Duratorq TDCi (140 PS (103 kW)), PowerShift 6-speed automatic	19	20
2.0 Duratorq TDCi (140 PS (103 kW)), Durashift 6-speed manual	19	20

All vehicles exceed the security requirements for model concerned and group ratings have been reduced. Insurance ratings are issued by the Association of British Insurers and are shown above on new 1-50 rating scales.

## Dimensions

	C-MAX	Grand C-MAX
Overall length (mm)	4380	4520
Overall width with folded back mirrors (mm)	1858	1858
Overall width without mirrors (mm)	1828	1828
Overall width with mirrors (mm)	2067	2067
Overall height (unladen) (mm)	1626	1684 (1698*)
<b>Luggage capacity<sup>†</sup></b>		
7-seat mode (laden to package tray) (with tyre repair kit)	–	92
7-seat mode (laden to package tray) (with mini spare)	–	56
7-seat mode (laden to roof) (with tyre repair kit)		115
7-seat mode (laden to roof) (with mini spare)	–	79
5-seat mode (laden to package tray) (with tyre repair kit)	471	475
5-seat mode (laden to package tray) (with mini spare)	432	439
5-seat mode (laden to roof) (with tyre repair kit)	666	755
5-seat mode (laden to roof) (with mini spare)	627	719
2-seat mode (laden to roof) (with tyre repair kit)	1723	1742
2-seat mode (laden to roof) (with mini spare)	1684	1706
<b>Fuel tank capacity (litres)</b>		
Petrol	55	60
Diesel	53 (60**)	60

<sup>†</sup>Measured in accordance with ISO 3832. Dimensions may vary dependent on the model and equipment fitted. \*With roof rails. \*\*2.0 Duratorq TDCi engine only.

## Colour and trim

Model	Zetec	Titanium	
<b>Trim</b>	Daphne in Generic Silver	Pur in Syracuse	Napoli leather in Syracuse
<b>Seat facing trim</b>	Daphne	Pur	Napoli leather
<b>Feature colour</b>	Syracuse	Syracuse	Syracuse
<b>Environment colour</b>	Fairland	Fairland	Fairland
<b>Solid</b>			
Colorado Red	●	●	●
Frozen White	●	●	●
<b>Metallic</b>			
Micestone	○	○	○
Ink Blue	○	○	○
Lunar Sky	○	○	○
Mars Red	○	○	○
Midnight Sky	○	○	○
Moondust Silver	○	○	○
Panther Black	○	○	○

● = Standard, ○ = Option at extra cost. Metallic body colours and leather trim are options at extra cost.



# Colour and trim



Make it yours.



**Colorado Red**  
Solid body colour



**Mars Red**  
Metallic body colour\*



**Lunar Sky**  
Metallic body colour\*



**Frozen White**  
Solid body colour



**Dark Micastone**  
Metallic body colour\*



**Ink Blue**  
Metallic body colour\*



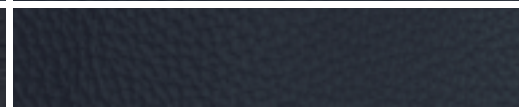
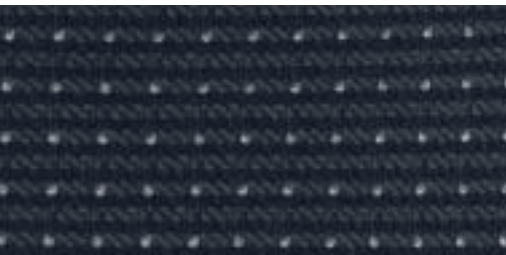
**Midnight Sky**  
Metallic body colour\*



**Moondust Silver**  
Metallic body colour\*



**Panther Black**  
Metallic body colour\*



**Zetec**  
Seat trim and colour  
Daphne in Generic Silver  
Seat bolster trim and colour  
Max in Syracuse

**Titanium**  
Seat trim and colour  
Pur in Syracuse  
Seat bolster trim and colour  
Lux in Syracuse

**Titanium**  
Seat trim and colour  
Napoli leather\*\* in Syracuse  
Seat bolster trim and colour  
Napoli leather\*\* in Syracuse

\*Metallic body colours are options at extra cost.  
\*\*Leather trim is optional at extra cost.

The Ford C-MAX is covered by the Ford Perforation Warranty for 12 years from the date of first registration. Subject to terms and conditions.

Note The car images used are to illustrate body colours only and may not reflect current specification or product availability in certain markets. Colours and trims reproduced within this brochure may vary from the actual colours, due to the limitations of the printing processes used.





MY 2012.25 GBR en

**Illustrations, descriptions and specifications.** This brochure was correct at the time of going to print. However, Ford policy is one of continuous product development. The right is reserved to change specifications, colours and prices of the models and items illustrated and described in this publication at any time. For the latest details always consult your Ford Dealer. **Optional equipment.** Throughout this publication, wherever a feature is described as being an 'Option' or 'Optional Fitment/Pack', etc., you should assume that it will be at extra cost to the base vehicle, unless specifically stated to the contrary. All models and colour combinations are subject to availability. **Note.** Some images portrayed are of a pre-production model and/or are computer generated, therefore, the design/features on the final version of the vehicle may differ in various respects. In addition, some of the features shown on the vehicles may be optional. **Note.** This brochure contains both original Ford accessories as well as a range of carefully selected products from our suppliers, which are featured under their own brands. All supplier branded products are subject to warranty terms defined by the relevant suppliers and do not lie within the responsibility of Ford. **Note.** The Bluetooth® word mark and logos are owned by the Bluetooth SIG, Inc. and any use of such marks by Ford Motor Company is under licence. Other trademarks and trade names are those of their respective owners.

**The Government fuel figures** do not express or imply any guarantee of the fuel consumption of any particular car. The cars themselves have not been tested and there are inevitably differences between individual cars of the same model. In addition, a car may incorporate particular modifications. Furthermore, the driver's style and road and traffic conditions, as well as the extent to which the car has been driven and the standard of maintenance, will affect its fuel consumption. **Insurance groups** are only as recommended by the Association of British Insurers. You should always consult your insurance adviser for confirmation.

**Note** Ford C-MAX does not provide a cargo net or attachment points for it behind the first or second seat row; Ford Grand C-MAX does not provide a cargo net or attachment points for it behind the first seat row, but behind the second seat row only.



Ford and BP – working together to reduce fuel consumption and emissions.



**Allergy-tested interior** All materials used in the manufacture of the interior of this vehicle meet the strict requirements of the TÜV TOXPROOF Criteria Catalogue for Vehicle Interiors by the TÜV Produkt und Umwelt GmbH and are designed to minimise the risk of allergic reactions. With doors and windows closed, the interior materials selected – together with the integrated pollen filter – protect the passengers against most allergising particles from the outdoor air. At higher temperatures, the additional use of air conditioning is recommended.

Collect Nectar points at participating Ford Dealers and Authorised Repairers now. So take a look at the latest Ford Service Promotions by visiting the Owner Services section within [www.ford.co.uk](http://www.ford.co.uk).



Published by Ford Motor Company Limited, Brentwood, Essex, England. Registered in England No. 235446. **FA 1465/12** INS2011/017 Exp 11-10-2012 BJK 307844. FoE H06E. PN 179506/1111/63m/GBR en November 2011. © Ford Motor Company Limited.

[www.ford.co.uk](http://www.ford.co.uk)