

"Style Hit of '41!"





Presenting

A DISTINGUISHED ADDITION
TO THE CHEVROLET LINE IN 1941



NEW CHEVROLET

SIX-PASSENGER SEDAN WITH

Fleetline

BODY

In this, the most luxurious Chevrolet model ever produced, Chevrolet offers a super de luxe six-passenger four-door sedan distinguished by the advanced design of its body and by the richness of its finish, both exterior and interior. It is, of course, a Body by Fisher—but a special body that differs from all other 1941 Chevrolet bodies not only in finish and appointments but also in its very design. The Fleetline Sedan, in short, offers big-car luxury and comfort at Chevrolet prices and with Chevrolet economy.





"It's the style of it."



Presenting

A DISTINGUISHED ADDITION
TO THE CHEVROLET LINE IN 1941



NEW CHEVROLET

SIX-PASSENGER SEDAN WITH

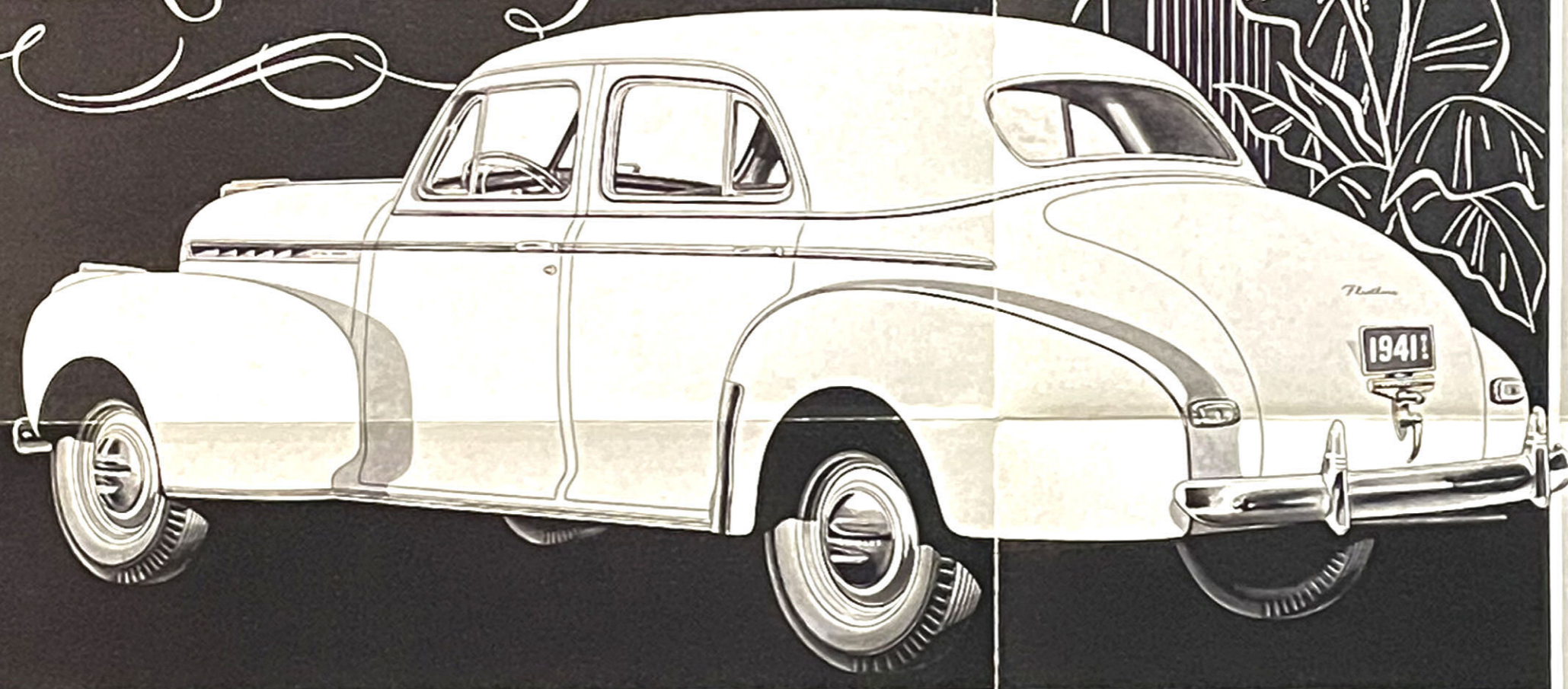
Fleetline

BODY

In this, the most luxurious Chevrolet model ever produced, Chevrolet offers a super de luxe six-passenger four-door sedan distinguished by the advanced design of its body and by the richness of its finish, both exterior and interior. It is, of course, a Body by Fisher—but a special body that differs from all other 1941 Chevrolet bodies not only in finish and appointments but also in its very design. The Fleetline Sedan, in short, offers big-car luxury and comfort at Chevrolet prices and with Chevrolet economy.



NEW FISHER
Fleetline
 CHEVROLET BODY



Luxurious

APPEARANCE and
 COMFORT FEATURES



- Special Fleetline body contours
-
- Landau type rear-quarter panels
-
- Walnut grained interior moldings
-
- "Silverstyl" instrument panel
-
- Full chromium window reveals

Fisher No Draft ventipanes
 front and rear

•

Extra wide doors front and rear

•

Decorative molding across the
 front seat back

•

Specially woven pin-stripe broadcloth
 upholstery

•

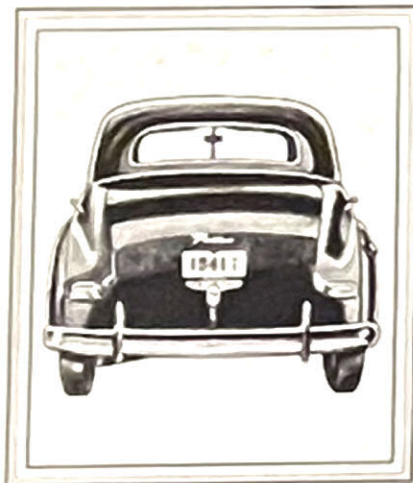
Plated chromium-stripped interior
 door panels

•

Top-quality carpeting

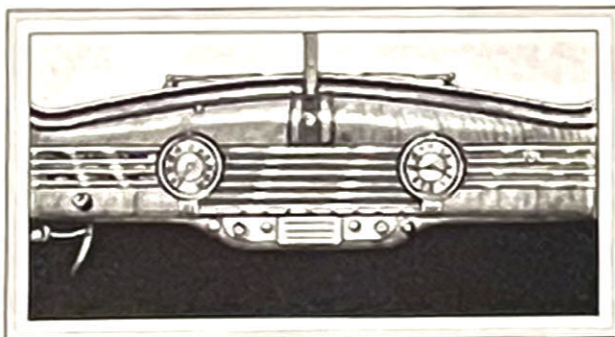
•

Plus, of course, all the regular features
 and appointments—such as robe cord,
 ash receptacles, retractable assist straps,
 arm rests, clock—that are regular equipment in
 the Chevrolet Special De Luxe Sport Sedan.



FLEETLINE
 BEAUTY

The long sloping contours that mark the rear from top to bumper, and the absence of rear-quarter windows, result in a body distinctively different from any other in the Chevrolet line. Each rear door, widened at the belt line, provides an extra-wide window equipped with a Fisher No Draft ventipane.



FLEETLINE "SILVERSTYL" INSTRUMENT PANEL

The lavish use of wood-grain treatment—Queensland maple and rich burr walnut—adds new beauty to the instrument panel, noteworthy for its symmetry and its colorful metals and plastics.

FLEETLINE
 LUXURY

Costlier materials and appointments used throughout the interior distinguish the new model from all others. Specially woven pin-stripe upholstery, high-quality carpeting and superior body lining fabrics, combined with effective use of plating in the seat backs and door panels, add luxury and beauty.

