

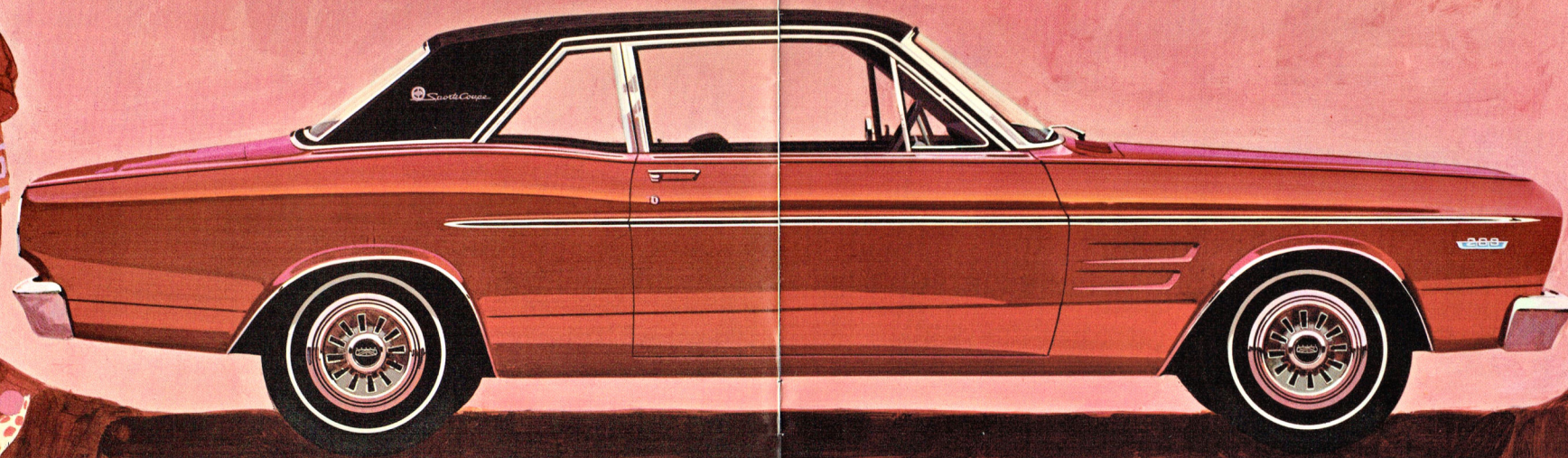
Better idea in economy... **Falcon**
'67



Futura

SPORTS COUPE

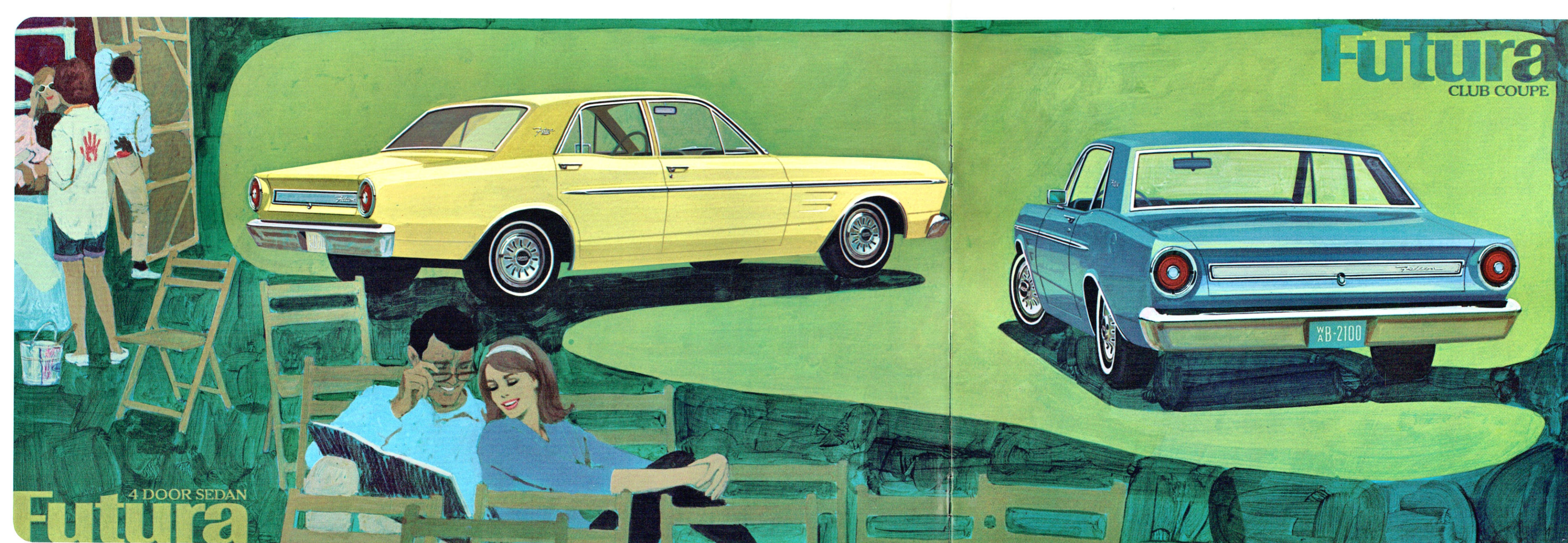
**New Falcon:
More Luxurious for '67.
If it didn't cost so little,
save so much and park
so neatly, you might call
it a short limousine.**



In 1967, Falcon scats ahead of its field with a smoother, quieter, more stable ride . . . new interior luxury . . . dual brake system . . . Standard Ford Motor Company Lifeguard-Design Safety Features . . . famous Twice-a-Year Maintenance, and much more.

There is an exciting array of new Falcon options. SelectShift Cruise-O-Matic is one. This fully automatic transmission lets you shift manually when you want to. New Stereo-Sonic Tape System can make any Falcon a concert hall. Your choice of *two* 289-cu. in. V-8's (up to 225 hp) . . . power front disc brakes . . . stylish vinyl roof option (shown on Sports Coupe opposite) . . . built-in heater and air conditioner . . . exclusive, long-life Radial Ply Tires . . . plus many more.

Some things remain typically Falcon (and we wouldn't change them for the world)! Such things as Falcon's well known gas savings, low upkeep, and very low price tag. Typical, too, are the quick, easy handling and "painless parking." Wrap these all up in sweet, smooth styling and you have Falcon '67. Whether you call it a short limousine or simply a lot of car, you'll want to test-drive this newest Falcon soon.



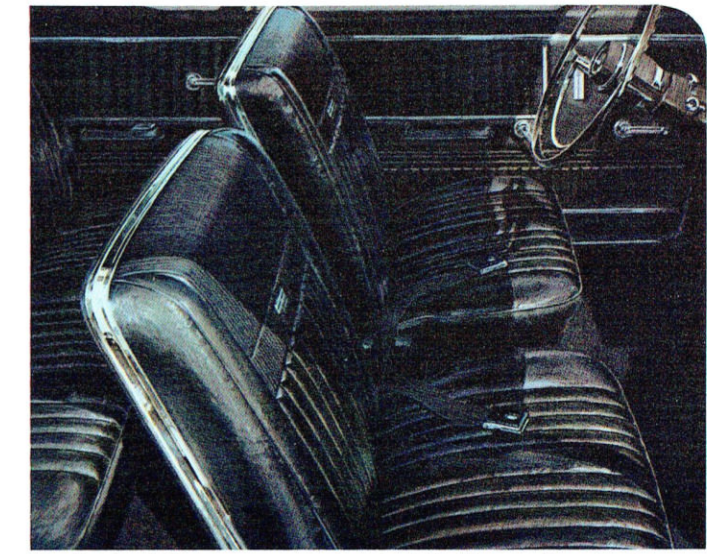
Falcon at its sportiest

What's new in the '67 Futuras? Plenty! Exciting new options like the Stereo-Sonic Tape System with four speakers and self-contained cartridges with over 70 minutes of music of your own choosing. Futura offers new power team options, too. Now there are *two* zippy 289-cu. in. V-8's—the 200-hp Challenger and the new 225-hp Challenger Special. SelectAir Conditioner, one

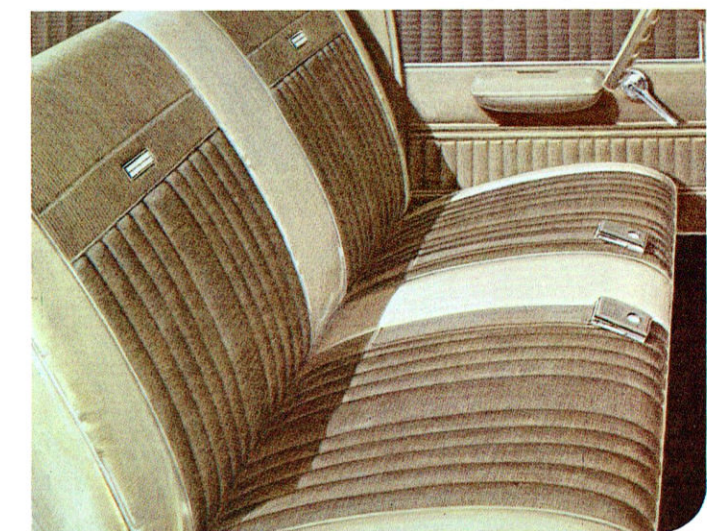
of Falcon's most popular options, gives you complete year-round climate control in one compact built-in unit. New SelectShift Cruise-O-Matic, available with all Falcon engines, doubles Falcon's driving fun. SelectShift lets you go completely automatic or shift manually, as you please, for a completely new kind of convenience. The comfort, convenience and luxury of the '67 Futuras

will surprise you. Falcon's reversible keys (they work either side up), suspended accelerator pedal (adjusts itself to your foot) are among many fine features you will enjoy in a 1967 Falcon.

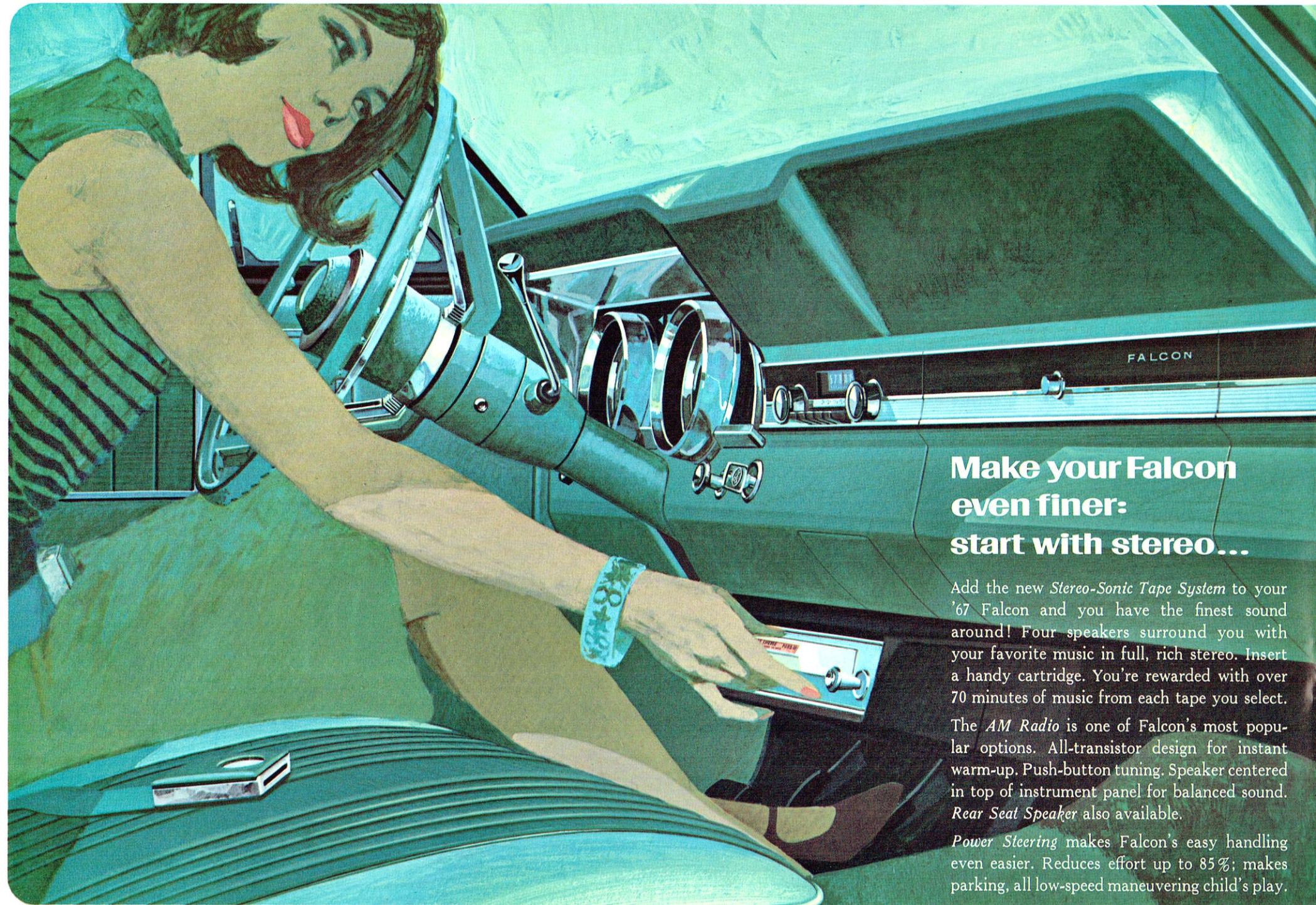
And, of course, where else but in Falcon will you find such a happy blend of luxury and performance with economy? That's the beauty of owning a Falcon!



The look of luxury comes standard in Futura Sports Coupes. Lush bucket seats, full carpeting, a choice of four all-vinyl interiors are extra-value features at no extra cost. (Two all-vinyl trims like this one are available on Futura 4-Door Sedans and Club Coupes as options.)



Futura 4-Door Sedans and Club Coupes offer a choice of four handsome color-keyed, nylon and vinyl interiors. Front and rear seat belts are standard in all Falcons. Deluxe Seat Belts illustrated above are standard in Sports Coupe, optional in other Falcons.

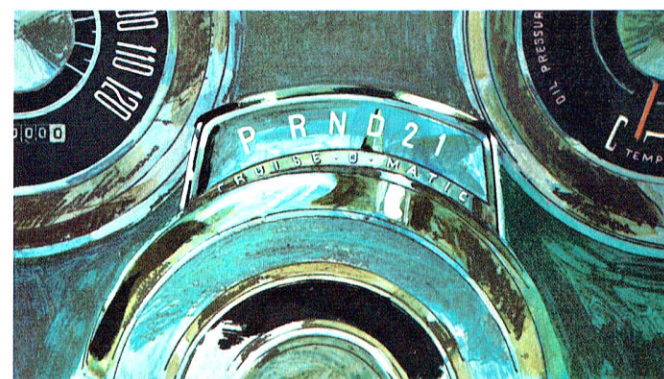


Make your Falcon even finer: start with stereo...

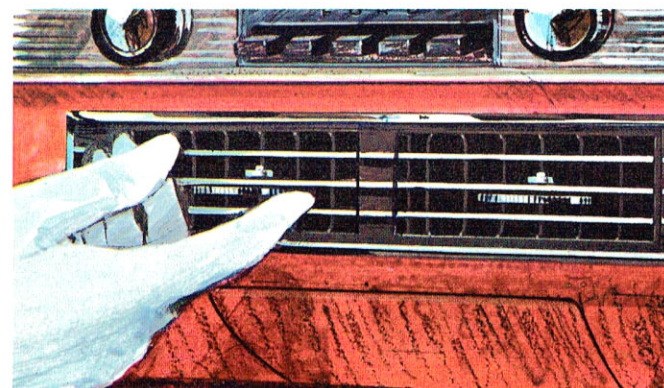
Add the new *Stereo-Sonic Tape System* to your '67 Falcon and you have the finest sound around! Four speakers surround you with your favorite music in full, rich stereo. Insert a handy cartridge. You're rewarded with over 70 minutes of music from each tape you select.

The *AM Radio* is one of Falcon's most popular options. All-transistor design for instant warm-up. Push-button tuning. Speaker centered in top of instrument panel for balanced sound. *Rear Seat Speaker* also available.

Power Steering makes Falcon's easy handling even easier. Reduces effort up to 85%; makes parking, all low-speed maneuvering child's play.



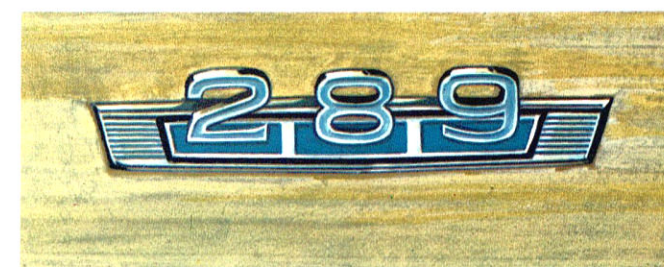
SelectShift Cruise-O-Matic . . . Lets you make the selection. Now you can enjoy fully automatic driving or shift manually through the gears when you want to. Permits downshifting for extra control for steep hills; ideal for trailer towing.



SelectAire Conditioner . . . Year-round comfort is yours in a Falcon with this combined heater—air conditioner unit. SelectAire provides plenty of cool, dehumidified air in summer . . . warm air in winter. Simple controls. Four adjustable outlets.



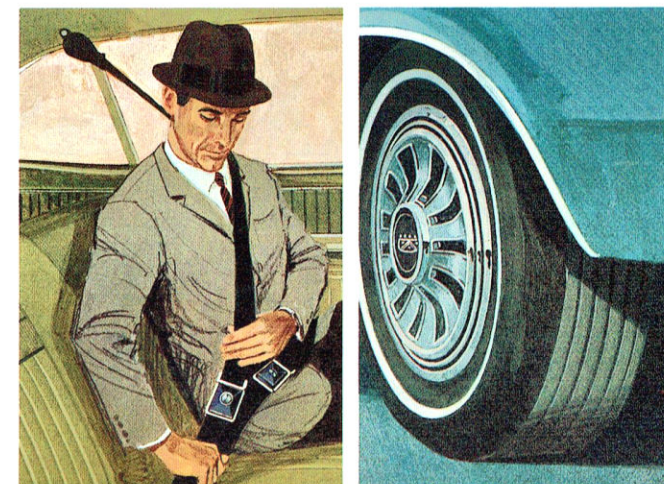
Power Front Disc Brakes . . . Offered for the first time on Falcon. Available on V-8 models for smooth, more controlled stopping. Design of disc brakes makes them cooler running even after repeated hard braking, and less affected by water.



Two V-8's . . . Now you have a choice of two V-8's in Falcon: a new 225-hp Challenger Special V-8 and the popular 200-hp Challenger V-8. The Special features a new 4-barrel carburetor for smooth idle and acceleration.



4-Speed Manual Transmission . . . Sports-type, close-ratio 4-speed manual transmission is available on sedans and coupes with either of the V-8's. Fully synchronized. Positive reverse gear lockout. Familiar floor-mounted stick shift.



Shoulder Harness . . . New across-the-body harness made of stout nylon webbing with quick-release steel buckles, available for driver or front seat passenger. Designed to be worn with standard or deluxe seat belts.

"Tailored Tires" . . . This year select for your particular driving needs from more sizes and types of Falcon tires than ever before. One example: exclusive new Radial Ply Tires which run cooler, provide up to 80% more tread life.

Other Falcon Options

All-vinyl trim (standard in Sports Coupe)—pg. 5
 Visibility Group (lights for glove box, trunk or cargo area in wagons, instrument panel ash tray, map light, rear door courtesy switches)
 Vinyl roof (black or white)—cover, pg. 3
 Electric clock
 Heavy-duty battery
 Heavy-duty suspension (wagons only) with stronger springs, shock absorbers, front stabilizer bar
 Deluxe wheel covers—pgs. 4, 10
 Tinted windshield
 Tinted side glass
 Limited-slip differential
 Two-tone paint
 Wagon Magic Doorgate
 Wagon roof rack
 Power Doorgate window
 200-cu. in. Fairlane Six (Falcon sedans)
 White sidewall tires
 Decor group (accent paint stripe, rear quarter molding—Falcon sedans)
 Remote-Control Outside Rear-view Mirror (standard on Sports Coupe)
 Plus many, many others which your Ford Dealer will be happy to describe to you in detail.

TRAILER TOWING . . . For all the information about trailer towing with the '67 Falcons, see your Ford Dealer. He can advise you on the special equipment recommended for towing trailers of all types and sizes. And be sure to ask him for a copy of the 16-page *1967 Ford Car & Truck Recreation* brochure. It's filled with all kinds of suggestions and helpful information on the subject.



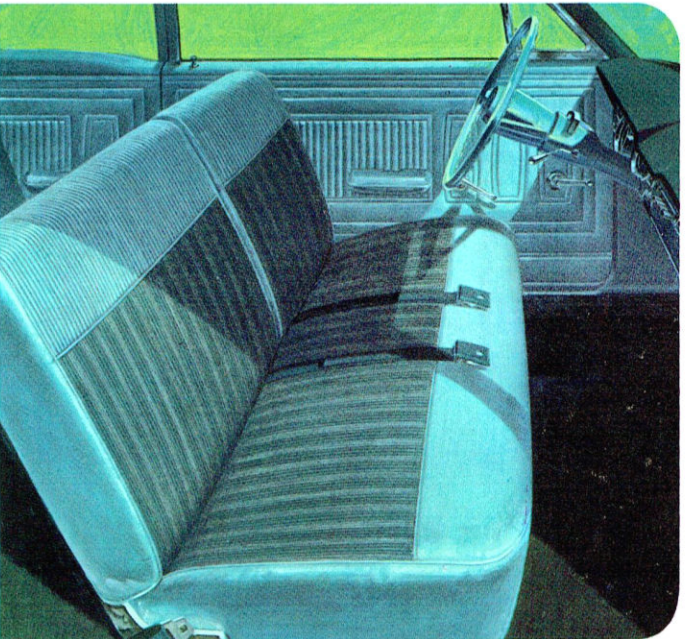
Falcon at its savin'est

For basic economy and value, you can't do better than Falcon. After all, Falcon is the all-time economy champ. Look at the '67 edition. In either Club Coupe or 4-Door Sedan, compare Falcon roomy interiors and big 12-cubic-foot trunk...handsome styling and handy size...spunky performance blended with the best kind of gas savings in the famous 170-cu. in. Falcon Six...plus a host of the best

big-car features (see "Standard Equipment" page 11). Compare Falcon with any other car in its field for true economy. Falcon has all of Ford's famous Twice-a-Year Maintenance features... 6,000 miles between oil changes, 36,000 miles between major lubes, self-adjusting brakes, all the rest. Compare Falcon for quality. It's backed by Ford Motor Company's 3-Point Warranty Plan. Finally,

compare Falcon for price. You'll find Falcon economy follows through *all the way*.

Of course if you're like most people, you like to save . . . and you like to "live a little." No reason why you can't do both with Falcon. With all of the tempting and exciting options (pages 6 and 7) available on '67 Falcons, you can have yours equipped just the way you want it.



Falcon Club Coupe interior. Your choice of three handsome, durable vinyl-and-cloth interiors just like this. Courtesy lighting, foam-padded seats, foot-operated parking brake, suspended accelerator pedal are a few of the big-car features standard on every Falcon.

Wagons



Falcon Futura Wagon

Falcon Custom Club Wagon

Falcon at its handiest

'67 Futura and Falcon wagons are the handiest in their field with space, comfort and style to spare. They offer 4-door convenience, 85.1 cu. ft. of cargo space, the 200-cu. in. Fairlane Six, and all of Ford's Lifeguard-Design Safety Features (opposite) as standard. '67 Futura and Falcon wagon options include Ford's dual-action Magic Door-gate, new Stereo-Sonic Tape System, and many more.

Three versatile Falcon Club Wagons provide generous cargo space and seating for up to eight passengers. The 170-cu. in. Six is standard. Options: Extended Body, 240-cu. in. Big Six, SelectShift Cruise-O-Matic. Camper conversions are available to make any Club Wagon your "roving campsite." Get a copy of the 1967 Ford Wagons Catalog from your Ford Dealer for the complete story.

Standard Equipment

FALCON Club Coupe and 4-Door Sedan: Power Team—170-cu. in. Falcon Six and 3-Speed Manual Transmission □ Choice of 15 Super Diamond Lustre Enamel colors □ Choice of three cloth-vinyl interiors □ Black, vinyl-coated rubber floor mat □ Full-width seats with foam-padded cushions □ Courtesy lighting □ Heater-defroster* □ Foot-operated parking brake □ Front arm rests, ash tray □ Reversible keys, "keyless" locking □ Suspended accelerator pedal □ Curved side glass □ Ford's famous Twice-a-Year Maintenance □ Plus all the Standard Ford Motor Company Lifeguard-Design Safety Features listed at right.

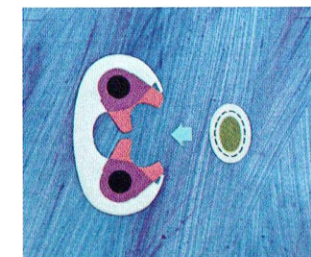
*See "Prices" on back cover

FALCON FUTURA Club Coupe and 4-Door Sedan: Power Team—200-cu. in. Fairlane Six and 3-Speed Manual Transmission □ Plus all the above equipment with these variations: Choice of four cloth-vinyl interiors □ Color-keyed carpeting □ Arm rests, front and rear □ Cigarette lighter and ash trays.

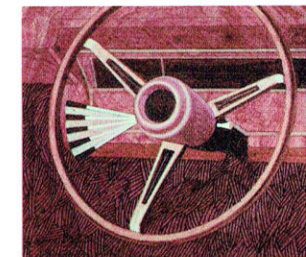
FALCON FUTURA Sports Coupe: Power Team—200-cu. in. Fairlane Six and 3-Speed Manual Transmission □ Plus all the above equipment with these variations: Choice of four all-vinyl interiors □ Individually adjustable front bucket seats □ Visibility Group □ "Sports Coupe" ornament on roof quarters □ Exterior Decor Group □ Deluxe wheel covers □ Remote-Control Outside Rearview Mirror.

FALCON WAGONS (Falcon and Futura Wagons): For all the facts on Falcon wagons, ask your Ford Dealer for a copy of the 1967 Ford Wagons Catalog.

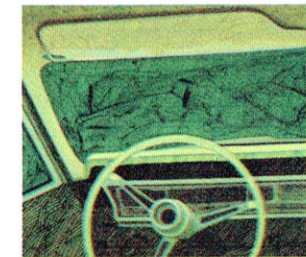
Standard Ford Motor Company Lifeguard-Design Safety Features



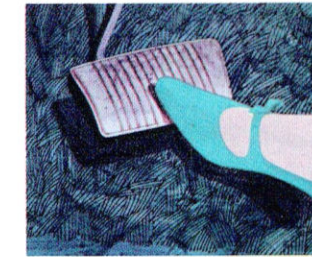
Double-Yoke Safety Door Latches and Safety Hinges—the famous Ford design—are strong, tight-gripping to help keep doors closed in the event of impact. As an additional precaution, Positive Door Lock buttons *must* be raised to disengage the locks, before doors can be opened.



Impact-Absorbing Steering Wheel with Deep-Padded Hub adds importantly to driver's safety. On left side of steering column is Turn Signal Lever with Lane-Changing Signal feature to indicate movements from one lane to another. On right is 4-Way Emergency Flasher switch.



Thick-Laminate Safety Plate Glass Windshield offers greater protection for those in the front seat. New Padded Windshield Pillars on either side, Padded Sun Visors overhead and Padded Instrument Panel, combine to provide added protection for the driver and front seat passengers.



Dual Hydraulic Brake System with Warning Light. Dual master cylinder plus separate lines to front and rear brakes. In event one line is damaged, other remains to provide partial braking while red light on instrument panel warns driver of need for brake service.

Other standard Lifeguard-Design Safety Features include: Front and Rear Seat Belts □ Front Seat Belt Retractors □ Outside Mirror □ Day/Night Inside Mirror with Shatter-Resistant, Flexible-Backed Glass and Breakaway or Double-Pivot Support □ Windshield Washers □ Two-Speed or Variable-Speed Windshield Wipers □ Backup Lights □ Front Seat Shoulder Harness Anchors □ Safety Rim Wheels □ Folding Seat Back Latches (Wagons) □ Corrosion-Resistant Brake Lines □ Safety-Designed Instrument Panel and Controls □ Uniform Shift Quadrant □ Reduced Glare Instrument Panel and Wiper Arms and Blades □ Energy-Absorbing or Impact-Distributing Arm Rests. (Certain exceptions in Club Wagons' standard safety features.)

Ever since there have been Fords on the American Road, the safety of the people who drive and ride in them has been a primary concern of thousands of people at Ford Motor Company, driving millions of miles on the test track, working millions of man-hours in the laboratory. Some of the latest results of their work are seen in the Ford Motor Company Lifeguard-Design Safety Features

listed here. Lifeguard-Design Safety Features help reduce the likelihood of injury in case of an accident, but you can accomplish the most important job of all—preventing an accident. By obeying traffic laws at all times and developing alert, defensive driving habits, you can best protect yourself and your family against unsafe conditions on the road.

1967 Falcon Specifications*

COLOR AND UPHOLSTERY SELECTIONS: Pick your favorite color from 15 brilliant Super Diamond Lustre Enamel single tones, or 25 two-tone combinations. You have a total of 13 Falcon upholstery choices of combinations of cloth and vinyl or optional all-vinyl. (In some cases a trim is offered with more than one model.) Your Ford Dealer will be happy to show you actual samples.

ENGINES (see chart for availability): **170-cu. in. Falcon Six**—105 hp; 3.50" bore x 2.94" stroke; 9.1 to 1 comp. ratio; reg. fuel; single-barrel carb.; auto. choke; self-adj. valves; oil cap'y, incl. filter, 4.5 qt.

200-cu. in. Fairlane Six—120 hp; 3.68" bore x 3.13" stroke; 9.2 to 1 comp. ratio; 7 main bearings. Other specifications same as standard Falcon Six.

289-cu. in. Challenger V-8—200 hp; 4.00" bore x 2.87" stroke; 9.3 to 1 comp. ratio; reg. fuel; 2-barrel carb.; auto. choke; self-adj. valves; oil cap'y, incl. filter, 5 qt.

289-cu. in. Challenger Special V-8—225 hp; 4.00" bore x 2.87" stroke; 9.3 to 1 comp. ratio; 4-barrel carb.; prom. fuel. Other specifications same as Challenger V-8 above.

11 Falcon Power Teams	
Engines	Transmissions
170-cu. in. Falcon Six†	3†, C
200-cu. in. Fairlane Six†	S†, C
289-cu. in. Challenger V-8	S†, C, 4
289-cu. in. Challenger Spec. V-8	S†, C, 4

†Std. engine and trans. on Falcons. †Std. engine on Futuras
 †Std. trans. as indicated, all others optional
Transmission Key:
 3—3-Speed Manual S—Synchro-Smooth Drive (fully synchronized 3-speed manual) C—Cruise-O-Matic Drive 4—4-Speed Manual

ENGINE FEATURES: 6000-mile (or 6-month) full-flow oil filter; replaceable, dry-element air cleaner; year-round 190° thermostat; 12-volt electrical system; 38-amp. alternator; 54-plate, 45-amp-hr battery; weatherproof ignition system; positive-engagement starter; exhaust system has aluminum longitudinal muffler.

CLUTCH AND MANUAL TRANSMISSIONS (see chart for availability); Non-centrifugal clutch with Sixes; semi-centrifugal clutch with V-8's. Face diameter 8½" with Falcon Six, 9" with Fairlane Six, 10" with V-8's.

3-Speed Transmission has forged bronze synchronizers in 2nd and direct for smoother operation. Anti-friction bearings throughout. Standard "H" shift pattern with lever on steering column. **Synchro-Smooth Drive** has synchronized manual shifting in all three forward gears; clutch-free downshifting to low while under way. **4-Speed Transmission** with floor-mounted stick shift. All forward gears synchronized for fast, smooth shifting.

SelectShift Cruise-O-Matic Drive lets you drive fully automatic or shift manually through the gears. Three forward speeds, one reverse. Effective engine braking in low gear (1) for better control on grades and hills. Quadrant sequence P-R-N-D-2-1.

REAR AXLE: Semi-floating type with deep-offset hypoid gears. Induction-hardened, forged shafts, permanently lubed wheel bearings.

FRONT SUSPENSION: Ball-Joint type with coil springs pivot-mounted on upper arms. 36,000-mile (or 3-year) life intervals, full-life seals. Angle-Posed design for anti-diver control. Link-type, rubber-bushed ride stabilizer. Tapered roller wheel bearings. All-weather shock absorber fluid for better year-round ride control.

REAR SUSPENSION: Asymmetrical design with rear axle forward of spring center for anti-squat on takeoff. Longer wide-leaf springs with tip inserts and wider spring base provide softer, more stable, leveled ride. Diagonally mounted shock absorbers have all-weather fluid.

STEERING: Recirculating-ball type steering gear for easy handling. Anti-friction bearings throughout. Permanently lubricated steering linkage joints. Steering ratio, 29.4 to 1. Turning diameter, 39.8 feet. Power steering option has a 21.6 to 1 ratio for fast responsive control.

BRAKES: New dual brake system with dual master cylinder, separate lines to front and rear brakes. Self-adjusting, self-energizing design. Diameter 9" (Sixes), 10" (V-8's). Riveted linings for durability and fade resistance. Total lining area (sq. in.) 131 (six-cylinder models), 153 (all V-8 models).

TIRES: 4-ply rated, black tubeless with Tyrex rayon cord. White sidewall tires optional. Safety-type rims. Basic sizes: All Six Sedans—6.95 x 14; Futura Sports Coupe and V-8 Sedans—7.35 x 14. See your Ford Dealer for details.

Basic Dimensions & Capacities*

Length—194.3"	Width—73.2"	Height—54.6"
Trunk Luggage Vol.—12.3 cu. ft.		
Wheelbase—111"		Tread (front/rear)—58"
Wheel—16 gal.		

Approximate Weights

Falcon Club Coupe	2638 lb.
4-Door Sedan	2669 lb.
Futura Club Coupe	2646 lb.
4-Door Sedan	2677 lb.
Sports Coupe	2674 lb.

*For all models except wagons. Complete wagon information is available in the 1967 Ford Wagons Catalog. Ask your Ford Dealer for a copy.

PRICES: Heater-defroster is installed in production on all Falcons unless otherwise specified. However, heater-defroster may be deleted on car order if desired at an appropriate price reduction. All equipment and accessories, illustrated or referred to as options, optional or available are at extra cost. For the price of the Falcon equipped as you desire, see your Ford Dealer.

The illustrations and product information contained herein were current at the time this publication was approved for printing. However, in order to continue to offer the finest automotive products available, Ford Motor Company reserves the right to change specifications, designs, models or prices without notice and without liability for such changes.

Ford Motor Company's 3-Point Warranty Plan gives you . . .

1. 5-year or 50,000-mile warranty on car power train, steering, and suspension.
2. 2-year or 24,000-mile warranty on the entire car.
3. Only one dealer certification per year regardless of how many miles you drive.

Ford Motor Company New Vehicle Warranty Basic Facts

Ford Motor Company warrants to owners that its selling Ford dealer, (or if owner is traveling or has moved, any Ford dealer), using genuine new Ford or Ford authorized reconditioned parts, will repair or replace, free of charge including related labor, the following parts in Ford-built vehicles which are found, in normal use and within the following time and mileage limits (whichever comes first), to be defective in either workmanship or materials: (A) Any part of any vehicle within 24 months or 24,000 miles, and (B) power train parts in any car or light truck, and suspension or steering parts in any car (except Bronco), within 5 years or 50,000 miles.

Power train parts include: engine block, head and internal parts, water pump, intake manifold, transmission cases and internal parts, torque converter, driveshafts, universal joints, differentials, and driving axles and their wheel bearings. Suspension and steering parts include all parts of the front and rear suspension systems, steering gear and linkage, power steering pump, road wheels and front wheel bearings and seals. Related items such as ignition, electrical, cooling, fuel and brake systems, engine or transmission controls or linkages, steering column and wheel, clutch assembly, shock absorbers or load leveling system are excluded. The owner is required to obtain certain maintenance services† and, every 12 months, a written certification from Ford or Lincoln-Mercury dealer that he has presented evidence that such services have been performed.

The warranty does not apply to tires or tubes (adjustments are provided by tire companies), or to normal maintenance services or normal replacement of service parts such as filters, spark plugs, ignition points, wiper blades or brake or clutch linings, or to normal deterioration of soft trim, appearance items, hoses, belts or molded rubber or rubber-like items.

The warranty applies to vehicles normally operated in the U.S.A. and Canada.

†Every 6 months or 6,000 miles: Change oil and oil filter; clean air cleaner, air filter and oil filter caps; check valve tube and transmission oil levels. Every 12 months or 12,000 miles: Replace air filter on closed crankcase ventilation systems; clean emission system and carburetor spacer; replace emission control valve and thermostat air filter. Every 24 months or 24,000 miles: Change engine coolant and check radiator hoses. Every 36 months or 36,000 miles: Replace air filter on open crankcase ventilation systems; adjust automatic transmission bands; lubricate steering linkage and ball joints; clean and repack front wheel bearings.

You're ahead in a FORD!

