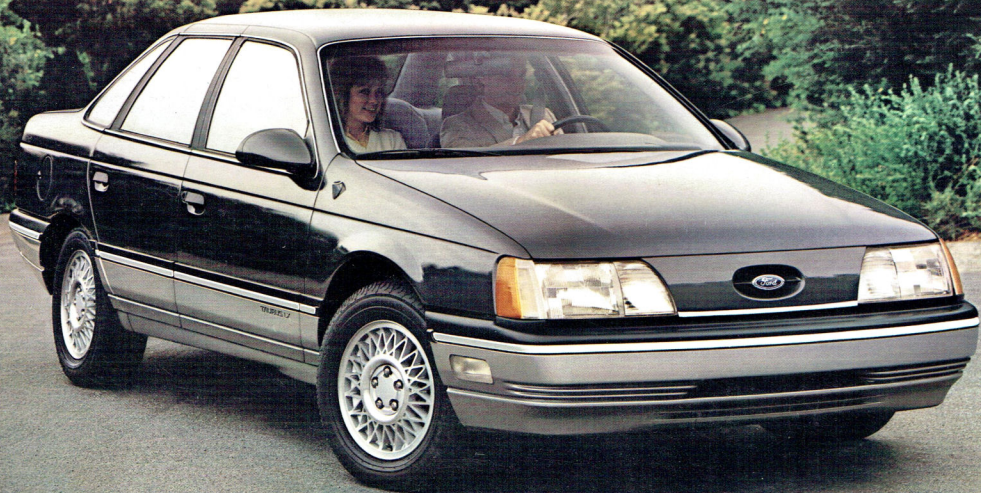


1986 FORD CARS

TAURUS • THUNDERBIRD • TEMPO • ESCORT • MUSTANG
LTD CROWN VICTORIA • ESCORT EXP
AEROSTAR WAGON • CLUB WAGON



Ford cars for 1986...from the maker of the best-built American cars

A 1985 survey of owners has established that Ford makes the best-built American cars. This is based on an average of problems reported by owners in a prior six-month period on 1981-84 models of all cars designed and built in the United States. Proof again that, at Ford ... Quality is Job 1.

The 1986 Ford cars, including the new Taurus, *Motor Trend* 1986 Car of the Year, and the new Aerostar, answer a broad range of demands for fuel economy,* performance, passenger capacity and style. They answer with Ford dynamic design, wide availability of electronically fuel-injected

engines, advanced suspension systems, exciting performance vehicles and careful attention to fit and finish quality. These are among the many reasons for making *your* next car a Ford.

Three-year unlimited mileage powertrain warranty

The new three-year unlimited mileage warranty covers major powertrain components on 1986 Ford cars. Warranty is limited and certain deductibles apply. Ask to see the three-year unlimited mileage powertrain warranty when you see your Ford Dealer.

1986 Ford Cars

Introducing Ford Taurus	3
Thunderbird	4
Ford Tempo	5
Ford Escort	6
Ford Mustang	7
Ford LTD Crown Victoria	8
Introducing the New Ford Escort EXP	9

1986 Ford Wagons

Introducing Ford Taurus Wagon	10
Introducing Ford Aerostar Wagon	11
Ford Escort Wagon	12
Ford LTD Crown Victoria and Country Squire Wagons	13
Ford Club Wagon	14
Safety and Owner Information	15

*See page 15 for EPA gas mileage estimates.

INTRODUCING FORD TAURUS

The 1986 Ford Taurus, *Motor Trend* 1986 Car of the Year, represents a remarkable combination of advanced design, interior roominess and all-around performance. It invites comparison to *any* car in the world today because its five years of planning were based on a "best in class" philosophy. Specific design elements in cars from the world over were picked as models. The Taurus goal: match or improve upon each of these cars identified as "best in class."

Most Taurus models are powered by a 3.0 liter multiple-port fuel-injected V-6 engine combined with an efficient 4-speed Automatic Overdrive transaxle. A wide stance, refined suspension, linear steering and steel-belted all-season tires designed for performance combine for remarkable handling, yet provide a smooth, comfortable ride.

Taurus sedans can seat up to six people in comfort. Flight bench, split bench and bucket seats were tested in actual riding and driving situations for optimum comfort and support.

The standard Taurus L is thoughtfully equipped for pleasurable driving. Taurus GL adds appreciated comfort and convenience extras. MT5 is the sporty Taurus series. The top-of-the-line LX is equipped for the ultimate in Taurus luxury and riding enjoyment.

There are also Preferred Equipment Packages to choose from, which group such options as rear window defroster, speed control, air conditioning and electronic entertainment systems. See the 1986 Taurus catalog for details.

Measurements

Wheelbase	106.0"
Length	188.4"
Height	54.3"
Width	70.6"
Tread: front	61.6"
Tread: rear	60.5"
Trunk capacity (cu. ft.)	17.0
Fuel capacity* (gal)	16.0
Curb weight (lb.)**	2,868
Passenger capacity†	6

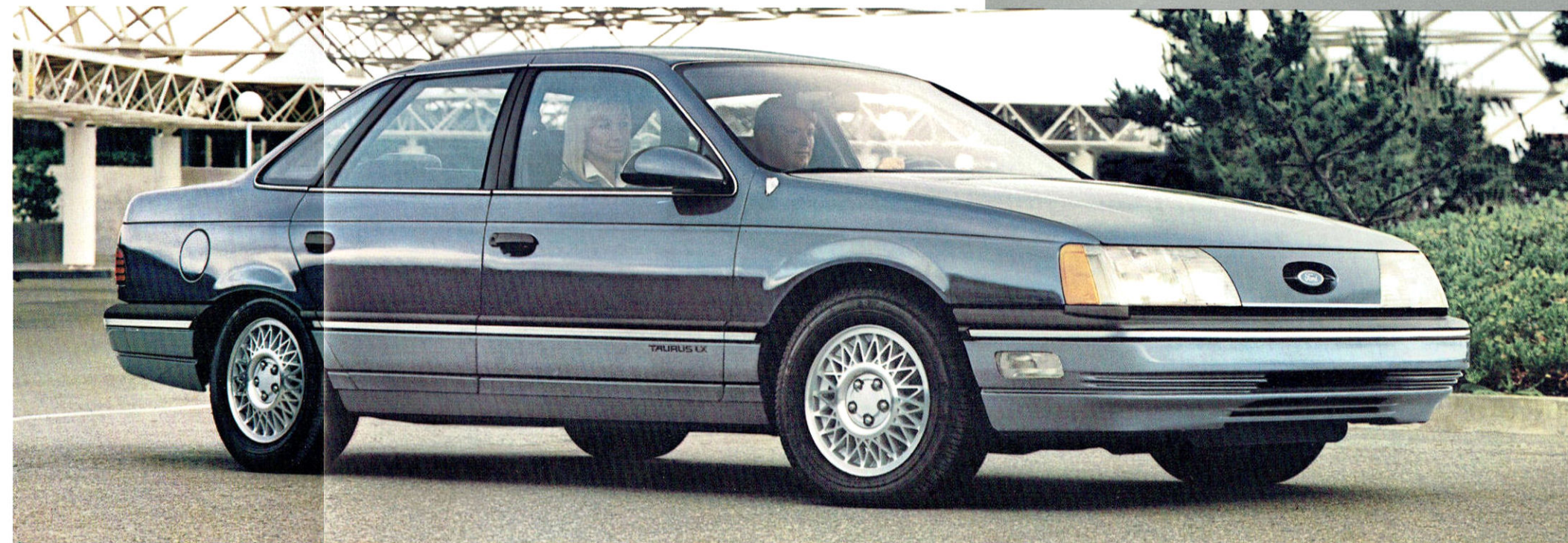
*18.6 gal. with optional Extended Range Tank.
**With 2.5 liter engine and 3-speed automatic transaxle (consult your Ford Dealer for availability).
†Except with optional bucket seats.



Above: Taurus GL interior in Midnight Blue.

Below: Taurus LX in Medium Regatta Blue Clearcoat Metallic.

Some equipment shown may be optional.



THUNDERBIRD

There has always been something special about the name. Today's Thunderbird, perhaps more than any before it, embodies the spirit of performance that its famous name implies. A driver's car, Thunderbird's efficient form contributes both to fuel economy* and vehicle handling. The standard Thunderbird is powered by

the 3.8 liter V-6 engine coupled with the smooth, efficient SelectShift automatic transmission.

Engineered and "tuned" for the road, Thunderbird's standard equipment includes variable-ratio power rack and pinion steering, power front disc/rear drum brakes and gas-pressurized shocks and struts. Inside,

the 5-passenger interior features reclining cloth split bench seats and a host of comfort and convenience items.

Thunderbird élan

The élan model offers the optimum in Thunderbird luxury. Its interior features upgraded trim and conveniences like power windows, dual electric remote-control mirrors, interval wipers, system sentry, digital clock and illuminated visor mirrors.

Thunderbird Turbo Coupe

Just as élan is optimum Thunderbird luxury, Turbo Coupe is optimum Thunderbird performance with its 2.3 liter turbocharged engine, close-ratio 5-speed manual transmission and special Goodyear performance tires. Articulated front sport seats adjust several ways.

There are also Thunderbird Preferred Equipment Packages to choose from, which group such options as the electronic instrument cluster, Illuminated Entry System and Power Lock Group. The 1986 Thunderbird catalog has details.

Measurements

Wheelbase	104.0"
Length	197.6"
Height	53.2"
Width	71.1"
Tread: front	58.1"
Tread: rear	58.5"
Trunk capacity (cu. ft.)	14.6
Fuel capacity (gal.)	22.1*
Curb weight (lb.)	3,089**
Passenger capacity	5

*18.2 gallons with Turbo Coupe
**Standard vehicle. Turbo Coupe 3,172 lb.

*Right: élan interior in Regatta Blue.
Below: Thunderbird in Regatta Blue
Clearcoat Metallic.*

*Some equipment shown on these
pages may be optional. *See page 15
for EPA gas mileage estimates.*



FORD TEMPO

Ford Tempo is a popular choice with American families. Front-wheel drive, advanced engineering and modern design are among the reasons why.

Tempo GL

Choose GL, Select GL or Sport GL. GL and Select GL are powered by the 2300-CC high-swirl combustion (HSC) engine (2300-CC high specific output (HSO) with Sport GL) and all have a standard 5-speed manual trans-axle (an automatic transaxle is optional with GL and Select GL, as is the 2.0 liter diesel engine/5-speed manual transaxle).

The standard GL includes full cloth reclining front bucket seats, power front disc/rear drum brakes and convenience items like interval wipers and an electronic digital clock.

Select GL adds power steering, tinted glass, AM/FM stereo radio* and dual sail-mounted remote-control electric mirrors.

Sport GLs 2300 high specific output (HSO) engine, performance 5-speed and special handling suspension add a different dimension to

Tempo's personality that holds strong appeal for driving enthusiasts.

Tempo LX

In Tempo LX, styled road wheels, tilt wheel, power door locks, a full complement of courtesy lights and an AM/FM stereo radio* are all included, plus more.

There are also many Tempo options to choose from, including a new supplemental air bag restraint system,** sport instrument cluster, lower accent paint treatment and decklid luggage rack. The complete list is included in the 1986 Tempo catalog.

*May be deleted for credit.
**Available in Spring, 1986.



Measurements	2-door/4 door
Wheelbase	99.9"
Length	176.5"
Height	52.7"
Width	68.3"
Tread: front	54.9"
Tread: rear	57.6"
Trunk capacity (cu. ft.)	13.2/12.9
Fuel capacity (gal.)	15.4
Curb weight (lb.)	2,339/2,398
Passenger capacity	5

Left: Tempo LX interior in Canyon Red.

Below: Tempo LX in Medium Grey Clearcoat Metallic.



FORD ESCORT

Worldwide sales figures for 1984 have established Escort as the world's best seller. That's easy to understand when you consider its blend of fuel efficiency,* comfort, ride quality and overall versatility. The 1.9 liter fast-burn engine offers power *and* high fuel economy.* And Escort's 4-wheel independent suspension system is refined for good handling.

Measurements	2-door	4-door
Wheelbase	94.2"	94.2"
Length	166.9"	166.9"
Height	53.5"	53.5"
Width	65.9"	65.9"
Tread: front	54.7"	54.7"
Tread: rear	56.0"	56.0"

Trunk capacity (cu. ft.)		
Rear seat up	16.4	16.4
Rear seat down	37.5	37.5
Fuel capacity (gal.)	13.0	13.0
Curb weight (lbs.)*	2,159	2,207
Passenger capacity	4	4

*With 1.9 liter 2V and 4-speed manual transaxle. Other models may vary.

Right: Escort LX interior in Regatta Blue.

Below: Escort LX 4-Door in Medium Regatta Blue Clearcoat Metallic.

*Some equipment shown on these pages may be optional. *See page 15 for EPA gas mileage estimates.*

Escort GT

The performance Escort. It features the 1.9 liter EFI HO engine and 5-speed manual transaxle. The suspension is designed for tight handling, and road-gripping 15" tires are mounted on 8-spoke aluminum wheels.

There are also many Escort options to choose from, including the Instrumentation Group, tilt steering wheel and speed control. A complete list of options appears in the 1986 Escort catalog.

Note: In certain states, there may be variations in equipment. Your dealer has details.

Escort Pony and Escort L

Whether you choose the Pony model or one of the two L series packages, you can expect solid Escort value. They're packed with features like reclining low-back cloth bucket seats, dual/fold rear bench seat, power front disc/rear drum brakes, power ventilation system and more.

Escort LX

LX adds comfort and convenience features to make driving more pleasurable. With the split dual/fold rear seat, you can fold one or both of the seatbacks down, depending on your passenger/cargo requirements. LX has luxury level sound insulation and much more.



FORD MUSTANG

Sporty, spirited Ford Mustang model choices begin with the LX 2-door sedan, 2-door hatchback or convertible. Next is breathtaking performance: GT 2-door hatchback or convertible. Finally, there's the sophistication of Mustang SVO.

Mustang LX

The sporty LX is trimmed with full bodyside striping. Inside, LX comes with extras like an AM/FM stereo radio (may be deleted for credit), interval wipers, and the Luxury Sound Package. The LX powertrain is the 2.3 liter OHC engine with 4-speed manual transmission. Power brakes and power steering are included. (See your dealer for details about the money-saving 2.3 Liter Special Value Program).

Mustang GT

The heart of Mustang GT is its new 5.0 liter EFI HO V-8 engine with multiple-port electronic fuel injection which puts out 200 hp.* Performance-oriented equipment includes a 5-speed manual overdrive transmission, special suspension, Goodyear Eagle VR performance

tires, quick-ratio power steering and articulated front sport seats.

Mustang SVO

SVO is the ultimate Mustang, powered by a computer-controlled 200-hp 2.3 liter engine* with multiple-port EFI, turbocharger and inter-cooler. Also standard are a 5-speed

with Hurst® shifter for quick, short throws, 4-wheel disc brakes and more.

There are also Mustang Preferred Equipment Packages to choose from, which group such options as air conditioning, Premium Sound System and styled road wheels. See the 1986 Mustang catalog for details.

*Based on SAE standard J1349.



Measurements	LX/GT	SVO
Wheelbase	100.5"	100.5"
Length	179.3"	180.8"
Height	52.1**	52.1"
Width	69.1"	69.1"
Tread: front	56.6"	57.8"
Tread: rear	57.0"	58.3"
Cargo volume index (cu. ft.)	30**	30.6**
Fuel capacity (gal.)	15.4	15.4
Curb weight (lb.)	2,849†	3,140
Passenger capacity	4	4

†Convertible height 51.8

**2-Door hatchback with rear seat down. Trunk capacity 10 cu. ft. for LX 2-door sedan; 6.4 cu. ft. for LX, GT convertible.

†2,907 lb. for 2-door hatchback; 3,044 lb. for convertible.

Left: Mustang LX interior in Canyon Red.

Below: Mustang GT 2-Door Hatchback in Dark Grey Metallic, Mustang GT Convertible in Bright Red.



FORD LTD CROWN VICTORIA

Few cars on the road today can match the smooth ride for which LTD Crown Victoria is so well known. Six passengers enjoy roomy comfort that's rare in a world which seems dominated by smaller cars. Sequential electronically fuel-injected V-8 power is standard, as is the fuel-efficient Automatic Overdrive trans-

mission.* This powerteam gives LTD Crown Victoria the capability to tow trailers weighing up to 5,000 pounds with the optional Heavy-Duty Trailer Towing Package.**

Both the standard flight bench seat and optional split bench seats have rich cloth seating surfaces and dual recliners. And LTD Crown Victoria is

equipped the way you'd expect: AM/FM stereo radio with 4 speakers (may be deleted for credit), quartz electric clock, courtesy lights front and rear, left-hand remote-control mirror and more. And, whether you choose the 2-door or the 4-door, you get a level of acoustical insulation that deserves its name: Super Luxury.

Measurements 2-door/4-door

Wheelbase	114.3"
Length	211.0"
Height	55.3"
Width	77.5"
Tread: front	62.2"
Tread: rear	62.0"
Trunk capacity (cu. ft.)	22.4*
Fuel capacity (gal.)	18.0
Curb weight (lb.)	3,708**
Passenger capacity	6

*21.4 cu. ft. with optional conventional spare tire.

**3,748 for 4-Door.

Right: LTD Crown Victoria LX interior in Medium Grey.

Below: LTD Crown Victoria 4-Door Sedan in Dark Grey Metallic.

*Some equipment shown on these pages may be optional. *See page 15 for EPA gas mileage estimates.*



LTD Crown Victoria LX

LX represents the ultimate in LTD Crown Victoria luxury and comfort. The split bench seats recline and are upholstered in a choice of velour cloth or supersoft vinyl (leather seating surfaces are optional). In addition to numerous luxury trim appointments, convenience items like power windows and electronic digital clock are included.

There are also Preferred Equipment Packages to choose from, which group such options as 6-way power driver's seat, Power Lock Group and speed control. For details, see the 1986 LTD Crown Victoria catalog.

*Available first quarter, 1986.



INTRODUCING THE NEW FORD ESCORT EXP

Front-wheel-drive Ford Escort EXP for 1986 features a sleek new front end design with air dam and aero headlamps plus a new bubble-back style rear hatch with integral wind spoiler. Under the hood is a 1.9 liter 2V fast-burn engine coupled with a smooth-shifting 5-speed manual transaxle. And the ride is smoothed

by the 4-wheel independent suspension system. Escort EXP is a personal 2-seater in Luxury Coupe and Sport Coupe versions.

Luxury Coupe

Luxury Coupe puts the accent on comfort and convenience. Instrumentation includes a tachometer and

handy trip odometer. The reclining, low-back bucket seats are trimmed in cloth and vinyl (all vinyl if you prefer). Special touches include AM/FM stereo radio (may be deleted for credit), deluxe floor carpeting, overhead console, left-hand remote-control mirror, and more.

Sport Coupe

Sport Coupe delivers higher performance with its 1.9 liter HO EFI engine. Special handling components on the 4-wheel independent suspension improve its ability to negotiate tight curves. Other special features include performance bucket seats, center console with graphic systems monitor, fog lamps, dual electric outside mirrors, low-profile 15-inch handling tires and cast aluminum wheels.

There are also money-saving Special Option Groups available, which include such items as speed control, flip-up open air roof and Premium Sound System. See the 1986 Escort EXP catalog for details.



Measurements

Wheelbase	94.2"
Length	168.4"
Height	50.9"
Width	65.9"
Tread: front	54.7"
Tread: rear	56.0"
Cargo volume index (cu. ft.)	31.5
Fuel capacity (gal.)	13.0
Curb weight (lb.)	2,311
Passenger capacity	2

Left: Escort EXP Luxury Coupe interior in Canyon Red.

Below: Escort EXP Luxury Coupe in Silver Clearcoat Metallic/Midnight Smoke.



INTRODUCING FORD TAURUS WAGON

The roomy Taurus Wagon features an 81-cubic-foot cargo volume index. Put the second seatback up, and you can accommodate up to six passengers in comfort. Or seat up to eight with the optional rear facing third seat.

Taurus Wagon has 3.0 liters of multi-port fuel-injected performance under the hood. This new engine, developed expressly for Taurus, is teamed with a new 4-speed Automatic Overdrive transaxle. So you get good mileage,* especially on the highway, along with the kind of power you'd expect from a modern V-6 engine.

A rear stabilizer bar and variable-rate springs are standard for improved stability when carrying a full load of passengers or cargo. The unique rear suspension design maximizes usable cargo space. The steering system is the precise rack and pinion design with quick-response 15.25:1 ratio and power assist.

The interior shows yet more evidence of the great care and planning that went into Taurus: The driver-

oriented instrument panel. The convenient placement of controls. And seats that underwent more than 110,000 miles of over-the-road testing.

Taurus Wagon is available in the well-equipped L series, the deluxe GL, luxurious LX series, and the sporty MT5, powered by a 2.5 liter EFI 4-cylinder engine** with smooth-shifting 5-speed manual transaxle.

There are also Preferred Equipment Packages to choose from, which group such options as rear window defroster, air conditioning, speed control and electronic entertainment systems. See the 1986 Taurus catalog for details.

*Consult your Ford Dealer for availability.

Measurements

Wheelbase	106.0"
Length	191.9"
Height	55.1"
Width	70.7"
Tread: front	61.6"
Tread: rear	59.9"
Cargo volume index (cu. ft.)	81.0
Fuel capacity* (gal.)	16.0
Curb weight (lb.)	3,184
Passenger capacity**	6

*18.6 gal. with optional Extended Range Tank.
**Except with optional bucket seats. Eight with optional rear facing third seat.

Right: Taurus LX interior in Medium Grey.

*Below: Taurus GL Wagon in Black. Some equipment shown on these pages may be optional. *See page 15 for EPA gas mileage estimates.*



INTRODUCING FORD AEROSTAR WAGON

The newest and most dynamically efficient of the mini-vans is Ford Aerostar. Aerostar Wagon seats up to seven in comfort (5-passenger seating is standard) or carries 139.2 cu. ft. of cargo with rear seat(s) removed. The standard engine is the fuel-efficient* 2.3 liter I-4 with electronic fuel injection. It's coupled with a 5-speed manual overdrive transmission. Also available is the 2.8 liter V-6 powerplant,** as well as the efficient Automatic Overdrive transmission.

While Aerostar Wagon fits easily into any standard passenger car garage, a V-6-powered and properly equipped vehicle can tow trailers which weigh a surprising 4,900 pounds!† And Aerostar's computer-designed suspension and gas-pressurized shock absorbers give it a smooth ride. A 39.8-foot turning radius, combined with power rack and pinion steering, gets Aerostar in and out of the tight spots with ease.

Aerostar models

In addition to the well-equipped standard model, Aerostar XL features

cloth Captain's Chairs, AM/FM stereo radio (may be deleted for credit), interval wipers, Two-Tone accent paint and more. The top-of-the-line XLT offers upgraded trim along with sophisticated electronic instrumentation (also included with specially equipped XLs).

There are also many Aerostar options to choose from, including the

Super Sound System, high-capacity air conditioner and rear window defroster/wiper washer. A complete list of options appears in the 1986 Aerostar Wagon catalog.

**The new 3.0 liter V-6 engine available February, 1986.

†Reduced by passenger and cargo weight in the towing vehicle.



Measurements

Wheelbase	118.9"
Length	174.9"
Height	72.8"
Width	71.7"
Tread: front	61.5"
Tread: rear	60.0"
Cargo volume index (cu. ft.)	139.2*
Fuel Capacity (gal.)	17.0
Maximum passenger capacity	7

*With bench seat(s) removed.

Left: Aerostar XLT interior in Regatta Blue.

Below: Aerostar XLT Wagon in Two-Tone Midnight Regatta Blue Clearcoat Metallic over Silver Metallic. *See page 15 for EPA gas mileage estimates.



FORD ESCORT WAGON

Front-wheel-drive Escort Wagon provides a lot of cargo volume for "those extras" you often like to carry. Just fold down the rear seatback for 58.8 cu. ft. of cargo space. Choose the Escort LX and you'll have the added versatility of split dual/fold rear seats. One seatback can be lowered for extra cargo while the other remains up for a rear passenger.

You'll also find that Escort Wagon, for its size, is surprisingly comfortable whether you're seated up front or in back. That's because space-efficiency is a principal feature of Escort's interior design.

In Escort, you have a choice of the power-efficient 1.9 liter fast-burn engine with either 4-speed manual, 5-speed manual or 3-speed automatic transaxle—or, for even greater economy, the 2.0 liter diesel engine with 5-speed manual transaxle.*

The ride is smooth and the handling responsive. Because Escort is engineered with a 4-wheel independent suspension system, Rack and pinion steering is direct and precise. The brakes are power-assisted. And Escort has all-season P-metric steel-belted radial tires for good year-round traction.

There are also many Escort options to choose from, including the load-carrying suspension, rear window wiper/washer and deluxe luggage rack. See the 1986 Escort catalog for a complete list.

Note: In certain states, there may be variations in equipment. Your dealer has details.

Measurements

Wheelbase	94.2"
Length	168"
Height	53.5"
Width	65.9"
Tread: front	54.7"
Tread: rear	56.0"

Cargo volume index (cu. ft.)

Rear seat up	28.0
Rear seat down	58.8
Fuel capacity (gal.)	13.0
Curb weight (lbs.)*	2,233

Passenger capacity 4

*With 1.9 liter V4 and 4-speed manual transaxle.

Other models may vary.

Right: LX interior in Sand Beige.

Below: Escort LX Wagon in Sand Beige Clearcoat Metallic.

*Some equipment shown on these pages may be optional. *See page 15 for EPA gas mileage estimates.*



FORD LTD CROWN VICTORIA WAGONS

LTD Crown Victoria Wagon offers you spaciousness and comfort. You can seat six passengers, or eight with the optional dual facing rear seats. And there's an 88.2-cubic-foot cargo volume index with the second seat-back folded down (nearly 12 cu. ft. more in two lockable rear storage compartments).

Whether you choose the standard model or the distinctive Country Squire, (or the luxurious LX, available with both), you'll get the convenience of Ford's innovative 3-Way Doorgate, which opens like a door with the power window up or down, or lowers like a conventional tailgate.



The 5.0 liter EFI engine is teamed with a 4-speed Automatic Overdrive transmission for excellent highway economy.* More than just efficient, this powerteam allows you to tow up to 5,000 pounds with the optional Heavy-Duty Trailer Towing Package.**

Then, of course, there is LTD Crown Victoria's exceptionally smooth ride. The computer-selected suspension system has large coil springs at each wheel and gas-pressurized shock absorbers. And there's an automatic load-leveling suspension available that provides a level ride even when you're carrying the maximum load.

There are also Preferred Equipment Packages to choose from, which group such options as pivoting front vent windows, deluxe luggage rack, speed control, tilt steering wheel and automatic climate control air conditioning. For details, see the 1986 LTD Crown Victoria catalog.

**Available first quarter, 1986.

Measurements

Wheelbase	114.3"
Length	215.0"
Height	57.1"
Width	79.3"
Tread: front	62.2"
Tread: rear	62.0"
Cargo volume index (cu. ft.)	88.2*
Fuel capacity (gal.)	18.0
Curb weight (lb.)	3,937
Passenger capacity	6**

*Plus 9.9 cu. ft. in a lockable storage compartment beneath the load floor (5.7 cu. ft. with dual facing rear seats, 7.7 cu. ft. with cushions removed) and 2.0 cu. ft. in a lockable side storage compartment. **Eight with optional dual facing rear seats.

Left: Optional DuraWeave upholstery looks, feels and breathes like cloth, yet cleans and wears like vinyl. This exclusive LTD Crown Victoria Wagon feature is available with the optional split bench seats, shown in Midnight Blue.

*Below: LTD Country Squire in Oxford White. *See page 15 for EPA gas mileage estimates.*



FORD CLUB WAGON

Club Wagon is the roomiest vehicle Ford builds that's specially designed for carrying people. Club Wagon offers a wide range of seating capacities, from the 5-passenger E-150 Club Wagon on up to the 15-passenger E-350 Super Wagon.

Club Wagon has Ford exclusives like rugged body-on-frame construc-

tion and the smooth-riding Twin-I-Beam independent front suspension system which allows each wheel to handle bumps and jolts individually. Power steering and brakes are standard.

All 3-passenger bench seats have a "quick-release" feature for easy removal when you need the max-

imum 243.1 cu. ft. of cargo volume in the regular Club Wagon model. And you have a choice of a sliding or hinged side door.

Depending on the model you select (E-150, 250 or 350), you can choose the standard high-torque 4.9L, the largest 6-cylinder engine available in a wagon, or one of several optional V-8's including the electronically fuel-injected 5.0L engine which combines power with economy.* You can also select the 6.9L diesel for E-250 or E-350 models.

Naturally, with Club Wagon's large V-8 engines, you have exceptional trailer-towing capability: 10,000 pounds with the 7.5L gas engine and 8,100 pounds with the 6.9L diesel**

There are also many Club Wagon options to choose from, including Deluxe Two-Tone paint, Dual or Quad Captain's Chairs, power door locks/windows and speed control/tilt steering wheel. The complete list is included in the 1986 Club Wagon catalog.

**Reduced by passenger and cargo weight in the towing vehicle.

Measurements	E-150 Club Wagon
Wheelbase	138.0"
Length	206.8"
Height	80.9"
Width	79.9"
Tread: front	69.4"
Tread: rear	66.9"
Fuel capacity (gal.)	22.1*
Curb weight (lb.)	4,385
Maximum passenger capacity	8**

*40.1 gallons with optional auxiliary fuel tank.
**Standard seating capacity is 5, with 7- and 8-passenger arrangements optional. E-350 Super Wagon seats up to 15.

Right: Quad Captain's Chairs in Regatta Blue.

Below: Club Wagon XLT in Two-Tone Dark Shadow Blue Metallic over Light Regatta Blue Metallic.

*Some equipment shown may be optional. *See page 15 for EPA gas mileage estimates.*



SAFETY AND OWNER INFORMATION



Ford Motor Company strongly encourages all passengers to use their safety belts.

In all Ford cars, outboard front seat lap and shoulder belts have automatic retractors and comfort regulators. Outboard rear seat positions also have lap belts with retractors.

Ford urges the use of child and infant restraints, as required by law in all states. Ford's easy-to-install Tot-Guard (for children 20 to 50 pounds) and Infant Carrier (for children up to 20 pounds) are available at all Ford Dealers. If a child restraint requires a top-tycher, Ford cars provide for attachment of an anchor at each rear outboard seating position (at the right front in the 2-seat Escort EXP).

Ford Lifeguard Design Safety Features

Vehicle operation

- Split service hydraulic brake system with warning light
- Corrosion-resistant brake lines
- Flash-to-pass headlamps
- Turn indicator lever with lane-changing signal feature
- Hazard warning flasher
- Back-up lights
- Side marker lights
- Parking lights coupled with headlamps
- High-mount brake lamp
- Two-speed or variable speed windshield wipers
- Windshield washers
- Outside rearview mirror, driver's side (dual mirrors with Club Wagon)
- Glare reduced instrument panel, windshield wiper arms, and windshield pillars
- Uniform transmission shift quadrant with safety starting switch (on all vehicles equipped with automatic transmission)
- Continuously variable control illumination intensity (instrument cluster lighting)
- Safety hood latch system
- Responsive windshield defroster system
- Tamper resistant (non-reversing) odometer
- Speedometer with high-lighted 55 mph (on vehicles with analog speedometer)

Occupant protection

- Safety-designed front end structure
- Safety-designed roof structure (all nonconvertible models)
- Steel guard rails in side doors (except Club Wagon)
- Safety-designed door hinges and double yoke safety door latches (except Club Wagon)
- Two-position safety door latches (Club Wagon)
- Integral lap and shoulder belts with automatic retractors for front out-board occupants
- Seat belt fastening reminder light and buzzer or chime for the driver's seat
- Lap belts for center front (where 3-passenger front seat

is provided) and all rear seating positions with retractors for rear out-board occupants- Energy-absorbing steering column
- Energy-absorbing armrests and safety-designed door handles
- Energy-absorbing instrument panel with padding
- Energy-absorbing sun visors
- Energy-absorbing front seatback top
- Self-locking front seatback latches on 2-door vehicles
- Lead restraints or high back seats for front out-board occupants
- (except Aerostar and Club Wagon)
- Safety glove box latch
- Inside yield-away rearview mirror
- Impact-absorbing laminated safety glass windshield
- Flame-resistant interior materials
- Safety-designed coat hooks
- Safety-designed radio control knobs and push buttons

Anti-theft

- Locking steering column with key buzzer (or chime) reminder (with "Park" interlock or push button for key release)
- Visible vehicle identification number

Damage resistance

- 5 mph impact resistant front and rear bumpers that substantially exceed 2.5 mph Federal requirements (Aerostar and Club Wagon excepted)



Participating Ford Dealers are now offering the Lifetime Service Guarantee, which guarantees their work on your Ford vehicle for as long as you own it. This means that the covered repair is paid for once—and never again. If it ever has to be fixed again, the repairing dealer will fix it free. Free parts. Free labor. Even if the car is kept a lifetime. It doesn't matter where it was purchased, or whether it's new or used; the work is still covered by the repairing dealer.

This limited warranty covers vehicles in normal use. Items not covered are routine maintenance parts, belts, hoses, sheet metal, and upholstery. Ask to see this guarantee when you visit your participating Ford Dealer.



The optional Ford Extended Service Plan covers major components on new Ford cars and light trucks for longer than the vehicle's basic warranty. The cost of this added protection is so moderate that it could pay for itself the first time you need it. Your Ford Dealer has full details.



Genuine Ford and Motorcraft original equipment replacement parts meet the same high standards as those installed in production. They are your best assurance of quality and long-term satisfaction.

Gas mileage

The following EPA gas mileage estimates are for vehicles with the standard powertrain. Your dealer can give you estimates for other engine/transmission combinations. Actual mileage will vary with maintenance, options, and driving habits. Mileage estimates for Ford Taurus were unavailable at press time.

Escort Sedan: 32 EPA Est. City MPG, 41 Est. Hwy. MPG

Escort EXP: 27 EPA Est. City MPG, 34 Est. Hwy. MPG

Mustang: 23 EPA Est. City MPG, 28 Est. Hwy. MPG

Tempo: 25 EPA Est. City MPG, 33 Est. Hwy. MPG

Thunderbird: 19 EPA Est. City MPG, 23 Est. Hwy. MPG

LTD Crown Victoria Sedan: 18 EPA Est. City MPG, 26 Est. Hwy. MPG

Aerostar Wagon: 23 EPA Est. City MPG, 27 Est. Hwy. MPG

Club Wagon: 14 EPA Est. City MPG, 18 Est. Hwy. MPG

Ford-paid repair programs after the warranty period

Sometimes Ford offers adjustment programs to pay all or part of the cost of certain repairs. These programs are intended to assist owners and are in addition to the warranty or to required recalls. Ask Ford or your dealer about such programs relating to your Ford or Lincoln-Mercury vehicle.

To get copies of any adjustment program for your vehicle or the vehicle of interest to you: Call Ford toll-free at 1-800-241-3673, Alaska/Hawaii call 1-800-241-3711 and in Georgia call 1-800-282-0959.

Or write Ford at:

Ford Customer Information System
Post Office Box 95427
Atlanta, Georgia 30347

We'll need your name and address; year, make and model vehicle, as well as engine size; and whether you have a manual or automatic transmission.

Technical service bulletins

All vehicles need repairs during their lifetime. Sometimes Ford issues technical service bulletins (TSBs) and easy-to-read explanations describing unusual engine or transmission conditions which may lead to costly repairs, the recommended repairs, and new repair procedures. Often a repair now can prevent a more serious repair later. Ask Ford or your dealer for any such TSBs and explanations relating to your Ford or Lincoln-Mercury vehicle.

To get copies of these technical service bulletins and explanations for your vehicle or the vehicle of interest to you: Call Ford toll-free at 1-800-241-3673, Alaska/Hawaii call 1-800-241-3711 and in Georgia call 1-800-282-0959.

Or write Ford at:

Ford Customer Information System
Post Office Box 95427
Atlanta, Georgia 30347

We'll need your name and address; year, make and model vehicle, as well as engine size; and whether you have a manual or automatic transmission.

Options availability

Options shown or described in this catalog are available at extra cost and may be offered only in combination with other options or subject to additional ordering requirements or limitations.

Product changes

Ford Division reserves the right to change product specifications at any time without incurring obligations.



Ford Credit is interested in helping to fill the transportation needs of every qualified buyer of a Ford product. A participating dealer can arrange financing terms or a Red Carpet Lease® tailored to your circumstances. Ford Credit has offices conveniently located throughout the United States.

Buy or lease a new Ford Car

"Ask your Ford Dealer"

Following publication of this catalog, certain changes in standard equipment, options, prices and the like, or product delays, may have occurred which would not be included in these pages. Your Ford Dealer is your best source for up-to-date information.

Have you driven a Ford...lately?



FORD

