

1989 FORD THUNDERBIRD



THE NEW SPIRIT OF THUNDERBIRD...



Cars change. As technology brings ideas to reality, automobiles respond with engineering and styling that reflect each new advance. The best cars, historically, have been those most in tune with a buyer's desire for something better.

Thunderbird is an example

of the dynamic nature of successful automobiles. As changing attitudes and changing needs provided the challenges, improving technology provided the answers. Thunderbird's constant refinement produced, year by year, a more contem-

porary personal automobile. And yet, throughout its 33-year history, the unmistakable Thunderbird aura has been ever present.

Now, Thunderbird redefines itself for 1989, taking the art of design and the science of performance a step further

and infusing a long-respected name with a new charge of energy and spirit.

In a very real way, the evolution of Thunderbird parallels the evolution of Ford itself, the company that's winning the world over with technology and innovative design.

*Thunderbird LX in
Crystal Blue Clearcoat Metallic.
Some equipment may be optional.*

...THE NEW SPIRIT OF FORD.

Every so often, a car comes along which stands apart, with its own set of rules and a new sense of purpose against which its competitors must be judged.

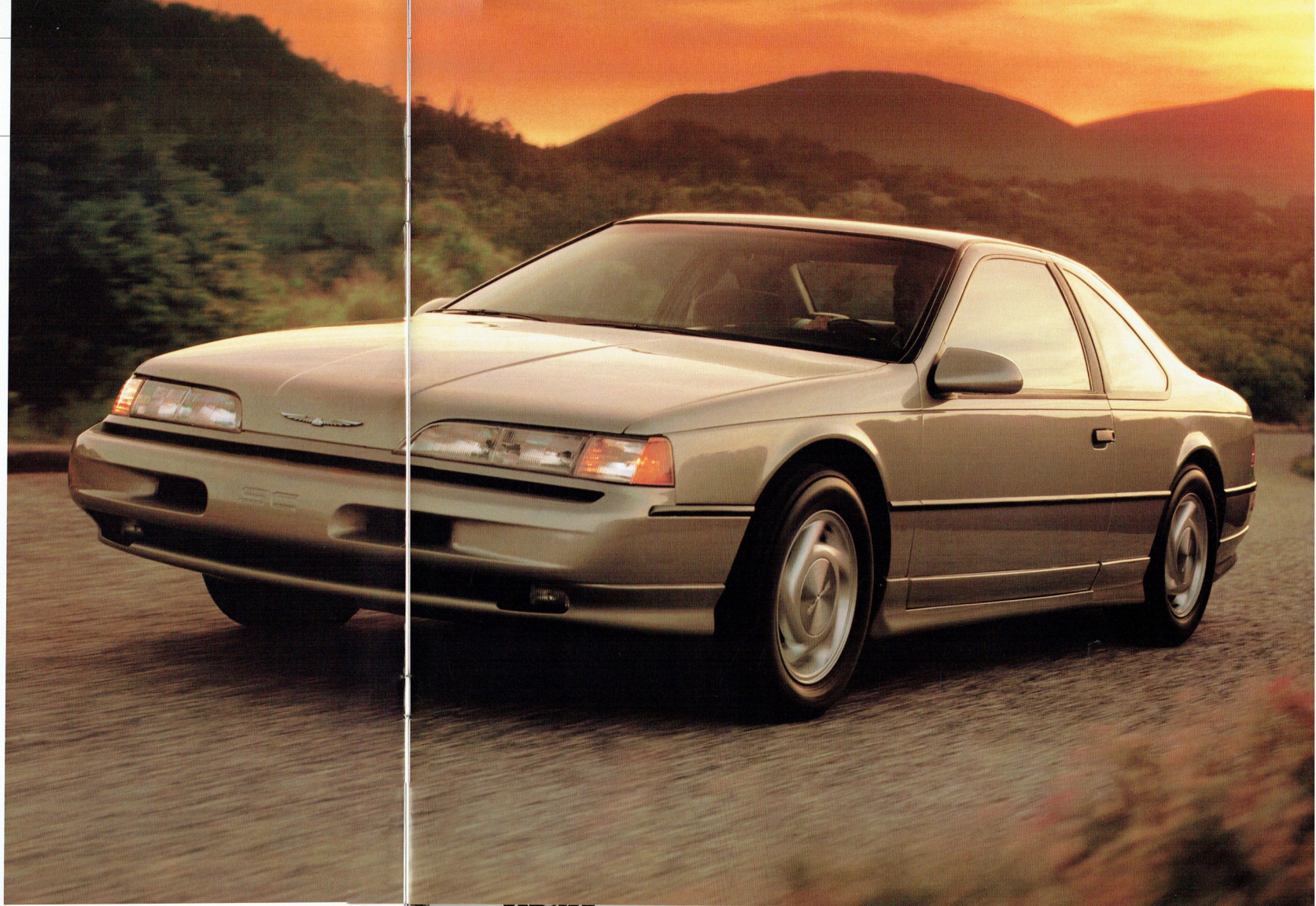
The new Super Coupe best characterizes the spirit of all three 1989 Thunderbirds. Its elegant lines and aggressive performance are pure excitement. With a look that commands attention and a supercharged V-6 that commands respect, Super Coupe stands poised to indulge the exhilaration of serious driving.

When accomplishment exceeds expectation, an automobile attracts the admiration of the most sophisticated drivers. This Thunderbird, perhaps more than any before it, could compel you to re-evaluate what you expect from the car you drive.

BEST-BUILT NORTH AMERICAN CARS EIGHT YEARS RUNNING

For the past eight years, Ford quality has led all other North American automotive companies. That's based on an average of owner-reported problems in a series of surveys of '81-'88 models designed and built in North America.

Thunderbird Super Coupe in Light Titanium Clearcoat Metallic. Some equipment shown may be optional.



ENVIRONMENT AND FUNCTION

The term "ergonomics" has been used more and more over the past few years with regard to automotive design. It refers to the science of planning a vehicle's interior to best suit those who will be occupying it. Roominess, placement of controls, visibility — all are functions of ergonomics.

The 1989 Thunderbird has been ergonomically designed to put the emphasis on providing optimum driver and passenger room and comfort. Head room, shoulder room, hip room, leg room — all have been increased to create an interior compartment that's remarkably spacious. And there are convenient areas for storage thoughtfully placed in the doors and in the console.

Convenient power windows are standard on all Thunderbirds. Controls are located in the door panel armrests for easy identification and comfortable operation.



A Vehicle Maintenance Monitor, optional with Thunderbird, standard with LX and Super Coupe, reports low fluid levels for oil, fuel, radiator coolant and windshield washer. It even alerts you when your oil needs changing. Also shown are optional power antenna and premium electronic cassette radio with premium sound system.



With Thunderbird LX and Super Coupe, a handy instrument panel storage bin includes a sliding cover to keep valuable items out of sight.



The LX trip computer, part of the electronic instrument cluster, reports average trip fuel economy, instantaneous fuel economy, trip distance, fuel remaining, and distance to empty.



Some equipment shown on this page may be optional.



Shown at right and on pages 10-11: Thunderbird LX interior in Titanium. Some equipment shown may be optional.





THUNDERBIRD LX

Any description of Thunderbird LX would have to include a reference to luxury. Above all, LX is outfitted for extraordinary passenger comfort and convenience.

The interior is the focus for LX premium appointments. The seats are trimmed in special cloth and the door trim panels are richly upholstered. The power driver's seat adjusts six ways. Both sun visors have a lighted mirror.

Electronic instrumentation includes speedometer, tachometer and trip computer, and an instrument panel storage bin (located above the glove compartment) features a sliding lid to help keep valuables out of sight. The electronic AM/FM stereo radio includes a cassette tape player.

LX convenience equipment includes front seat reading lights, an engine compartment light, and front and rear

courtesy lights. The illuminated entry system lights the interior when the door handle is lifted for extra security after dark. A vehicle maintenance monitor keeps track of fluid levels for oil, fuel, coolant and windshield washer and even indicates when the engine oil needs to be changed. The right and left outside rearview mirrors are power remote controlled.

Speed control and a tilt

steering wheel, two very popular driver convenience items, are standard with LX. And the rack-and-pinion steering is "speed sensitive". A computer adjusts the amount of power assist to the exact requirements of the driving situation for smooth, low-effort steering in tight, low-speed maneuvers and a progressively firmer feel as speed increases.

Owning a Thunderbird LX

can be even more rewarding when ordered with Preferred Equipment Extra Value Package 146A. This package includes a group of popular options which have been discounted to provide substantial savings. See page 24 for details.

Thunderbird LX in Deep Titanium Clearcoat Metallic. Some equipment shown may be optional.



THUNDERBIRD

Thunderbird's new profile is eye catching, to be sure. But it's also functional, using sleek lines to achieve the benefits of aerodynamics so important in today's automobiles — lower wind resistance and improved handling. For this is a thoroughly contemporary Thunderbird, one that brings advanced technology to a long-respected nameplate and writes the latest chapter in Ford design leadership.

Thunderbird's 3.8 litre V-6 engine features the precision and efficiency of a sequential electronic fuel injection system. Efficiency is also enhanced by the engine's roller tappets, whose low-friction operation contributes to fuel economy. And lightweight, high-strength aluminum and magnesium components help give the vehicle a better power-to-weight ratio than typical materials.

The Automatic Overdrive transmission, with its improved highway fuel economy, is standard, along with the precision and ease of rack-and-pinion power steering. The suspension system, responsible in large part for Thunderbird driving pleasure, is discussed on the following pages.

Inside, five adults enjoy a measure of roominess that just may surprise them.

The front bucket seats have individual recliners and integral lap and shoulder belts. For the rear seats, shoulder and lap belts are provided for outboard passengers and a lap belt is provided for the centre position.

Thunderbird comes equipped with standard features that add to the enjoyment of driving. Tinted glass all around. An electronic AM/FM stereo radio pro-

vides entertainment. Interval wipers and power windows make Thunderbird all the more pleasurable.

And for outstanding value, your 1989 Thunderbird may be ordered with an Extra Value Package that provides Air Conditioning at no extra cost.*

*Excludes Federal Excise Tax.

Thunderbird shown in Currant Red Clearcoat Metallic. Some equipment shown may be optional.

SUSPENSION AND BRAKING

Over the years, Thunderbird has come to be known as a "driver's car", regardless of model or series. That's because it's been engineered with the kind of suspension system that appeals to those who take driving a little more seriously. The 1989 Thunderbird is no exception with its rear-wheel drive configuration and performance-oriented componentry.

The all-new suspension system combines a long-spindle, short/long arm (SLA) front suspension with a fully independent SLA in the rear for taut handling. Front and rear stabilizer bars provide added control. The rear suspension control arms are "double isolated". This isolation from both the subframe mounts and the lower control arm bushings helps reduce harshness. The front suspension strut is also double isolated for low harshness.

Thunderbird's shock absorbers contain a low-pressure charge of inert nitrogen

gas. The gas suppresses foaming of the hydraulic fluid due to rapid bumps or similar agitation. This, with the help of variable-rate coil springs, means the ride is smooth under normal circumstances, yet firm enough for handling situations.

TECHNOLOGY AND BRAKING

Recent advances in automotive technology have meant new and effective ways to deal

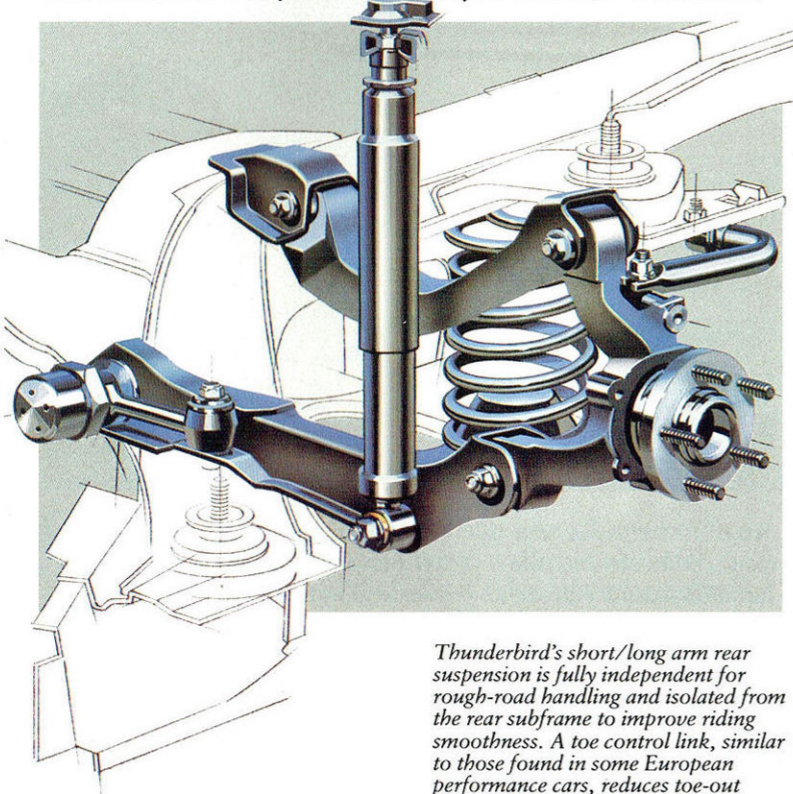
with out-of-the-ordinary driving situations. One of these beneficial developments is anti-lock brakes, which are standard equipment in Thunderbird Super Coupe and optional with the other Thunderbirds.

Hard braking can cause wheel lock-up which reduces driver control, especially on slippery surfaces. The computer technology built into the anti-lock brake system virtually eliminates brake-induced

wheel lock-up.

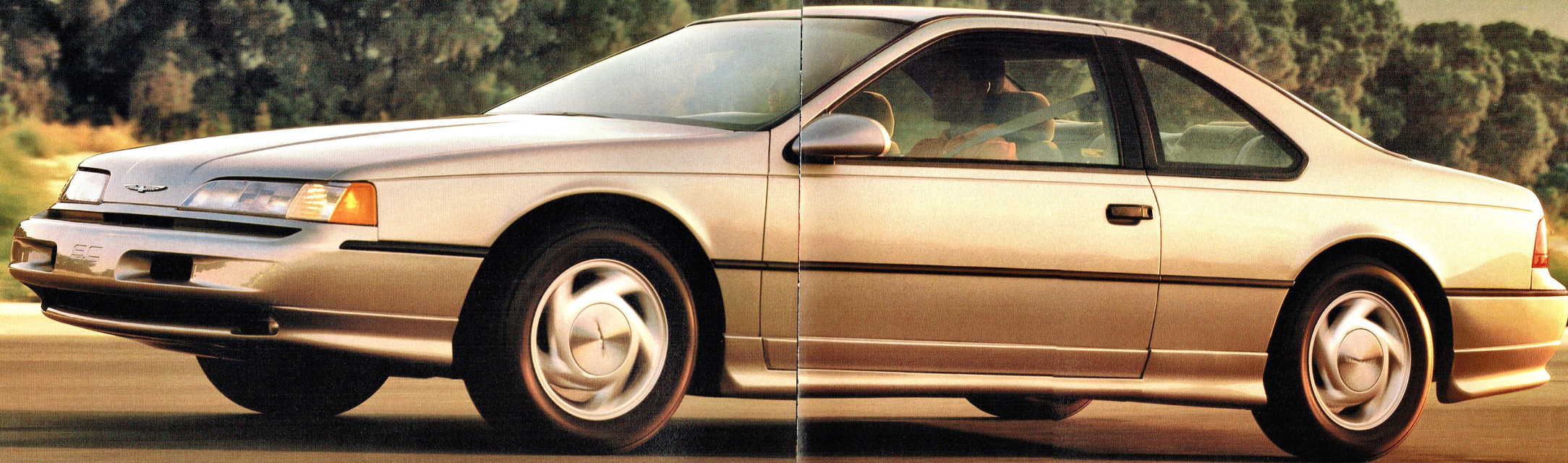
Electromagnetic sensors monitor the speed of each wheel during braking and transmit the data to a microprocessor. If impending wheel lock-up is detected, the brake pressure from the hydraulic unit to the wheels is modulated up to ten times per second. The brakes are applied and released repeatedly in the same way you were taught to "pump your brakes" when you felt a loss of traction. But the anti-lock brake system operates at a rate of speed far exceeding human capability, providing the driver a much greater degree of steering control during hard braking.

The system includes power-assisted 4-wheel disc brakes, 274 mm (10.8 in.) in diameter up front, 254 mm (10.0 in.) in diameter in the rear. These brakes have a total swept area of 2305 square centimetres (357.4 sq. in.) for quick stopping action and reduced fade under severe braking.



Thunderbird's short/long arm rear suspension is fully independent for rough-road handling and isolated from the rear subframe to improve riding smoothness. A toe control link, similar to those found in some European performance cars, reduces toe-out during braking and cornering manoeuvres. Another benefit of the rear suspension design is the allowance it makes for Thunderbird's large trunk area.





THUNDERBIRD SUPER COUPE

There's no disputing the obvious signals that say Thunderbird Super Coupe is all business, and the business is performance. At its heart is a power-boosting super-charger with intercooler that transforms the sequential EFI 3.8 litre V-6 engine into a power-plant capable of over 200 hp and 300 lbs.-ft. of torque. The unique sound from under the hood means there is something very special indeed

about this Thunderbird.

Super Coupe's computer-controlled anti-lock system is combined with 4-wheel disc brakes. Its suspension electronically adjusts to changing vehicle and road conditions. The steering system is "speed sensitive" to deliver the proper feel for the driving situation at hand.

Wide 16" aluminum wheels come with Goodyear Eagle performance tires with

an aggressive tread. The Traction-Lok axle automatically shifts some of the driving force, or torque, to the wheel with the most traction under adverse driving conditions like ice, snow or mud. Special articulated sport seats can be adjusted to their occupants and the instrumentation befits the high-performance machinery it monitors. Super Coupe performance is discussed in more detail on the pages that follow.

Thunderbird Super Coupe in Light Titanium. Some equipment shown may be optional.

SUPERCHARGING

Traditionally, superchargers have been found only on the world's most specialized performance cars. Simply put, supercharging is a means to increase the output of an engine (its horsepower) by raising the pressure of the intake charge above atmospheric.

The effect of supercharging is easy to describe. Figuratively speaking, it adds cylinders. The exhilarating rush of power upon acceleration makes it very difficult to believe you don't have more of them. In the case of Super Coupe, the performance is what you would expect to experience with a big V-8. And yet, when cruising at a constant rate of speed, the supercharger bypasses and gives you the benefit of 6-cylinder fuel economy. Here's how supercharging works:

The greater the mass of the fuel/air mixture supplied to the cylinders, the more powerful the combustion stroke. A supercharger is a positive

displacement pump that delivers this increased mass. Unlike a turbocharger, it works across a very broad range of engine rpm. The result is quick response even at start-up speeds without the "lag" associated with turbocharging.

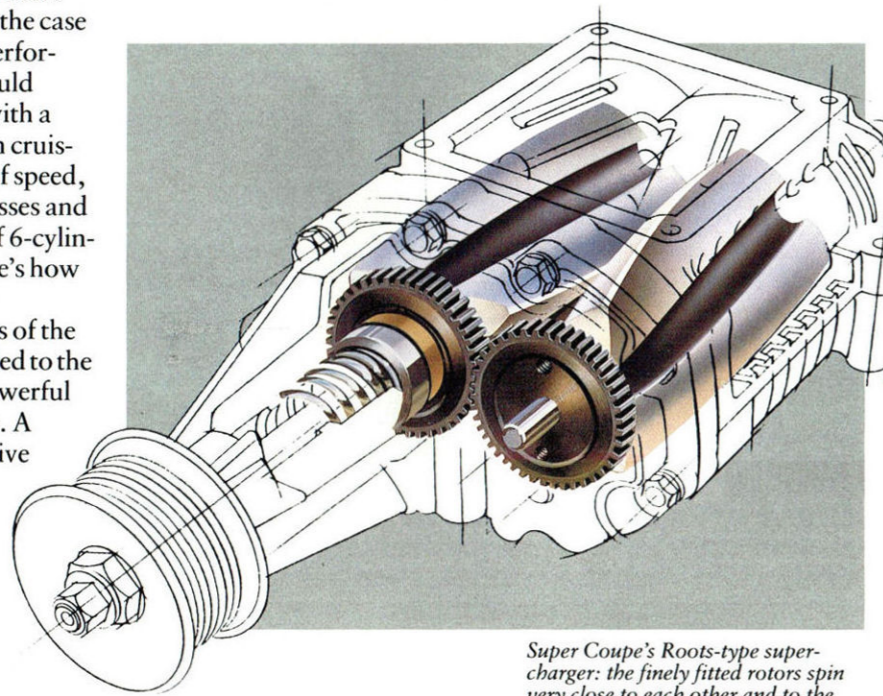
Some systems, like the one in Thunderbird Super Coupe, carry this principle even further with a device called an intercooler. Located between the supercharger and the

combustion chamber, the intercooler lowers the temperature of the air passing through it, increasing its density — and thus increasing engine horsepower even more.

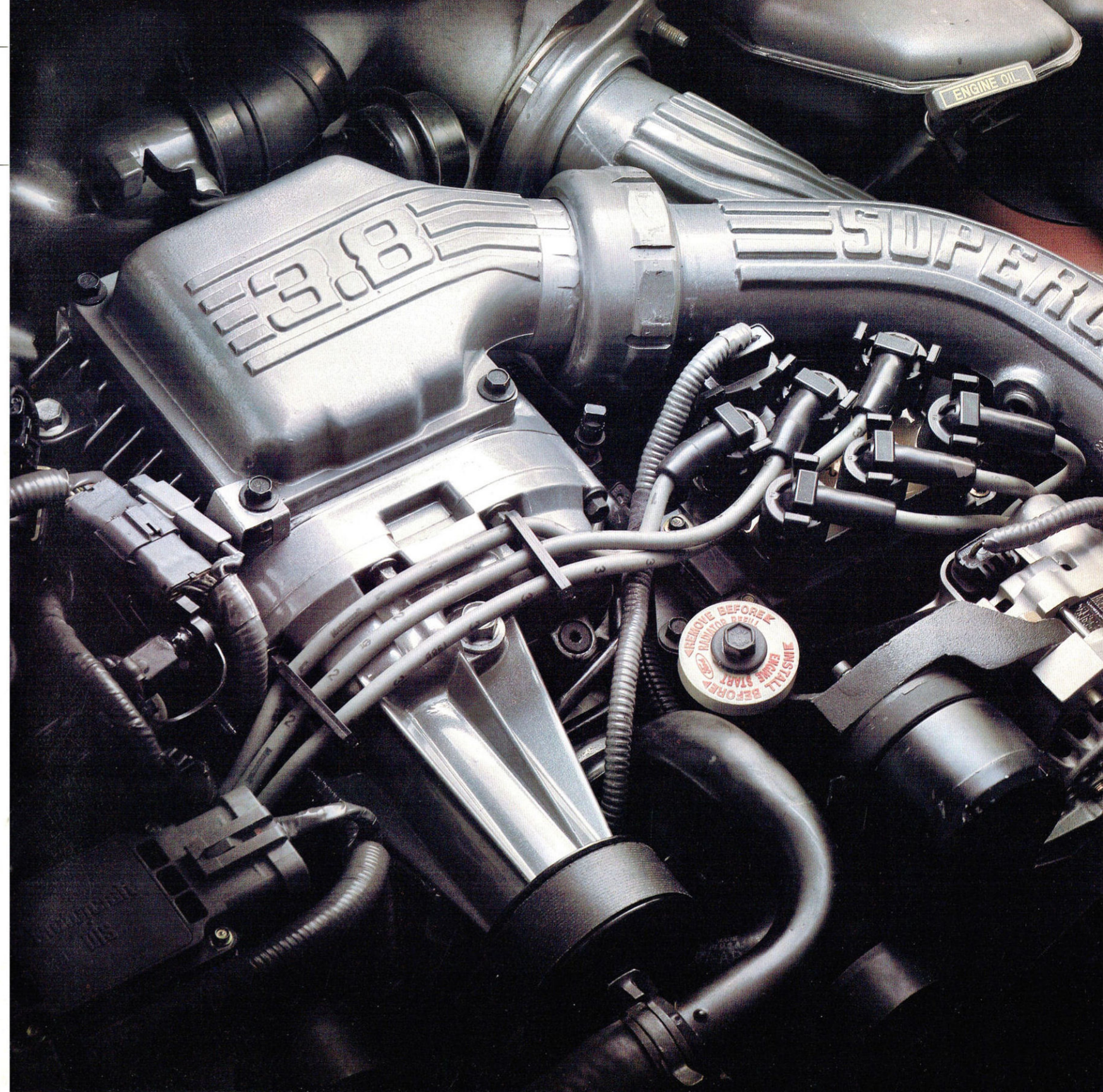
Superchargers (unlike exhaust-driven turbochargers) are mechanically driven by the engine's crankshaft to deliver nearly instantaneous response, the kind associated with larger displacement engines. The supercharger used in

Thunderbird is the Roots-type positive displacement. It delivers boost at lower compressor rpm and over a much broader engine-rpm range than some other types (those which rely on centrifugal force for compression, for example). And the special contoured rotor shafts mean smooth operation. It's a system well-suited to the kind of driving most people do — a combination of urban, suburban and highway travel.

In order to maximize the effectiveness of its supercharger, the 3.8L V-6 engine contains special modifications. Hypereutectic aluminum alloy pistons feature a high silicon content for added strength. The intake manifold is configured for the pressurized fuel/air mixture it receives. And high-performance, platinum-tipped spark plugs are designed to last 100,000 kilometres (60,000 miles) before replacement, minimizing maintenance service.



Super Coupe's Roots-type supercharger: the finely fitted rotors spin very close to each other and to the inside of the housing, pulling air inside and forcing it into the induction system. Because the compression method is mechanical, a more consistent pressure is created over a greater rpm range with better boost at the low end than with centrifugal systems.



INSTRUMENTATION AND CONTROLS

With an automobile as performance oriented as Thunderbird Super Coupe, it shouldn't come as a surprise that most of the instruments are related to the engine (the supercharger boost gauge, for example), and that this instrumentation is comprised of real gauges, not lights. The Super Coupe instrument panel and surrounding controls were designed with the emphasis on the driving function. Gauges and dials are placed to be quickly and easily read, and knobs and push buttons are placed to be comfortably reached. It's all part of the ergonomic integrity of Thunderbird.

But functional doesn't necessarily mean plain or spartan. Instrumentation was designed for a bold, aggressive appearance in keeping with the look, capability and feel of the car itself.

Super Coupe's performance analog speedometer features white-on-black graphics and trip odometer. There's a tachometer, of course, and between the two are the

supercharger boost gauge and fuel gauge. Temperature and oil pressure gauges are positioned at either end of the cluster. The air conditioning controls are arranged for convenient operation and feature clear graphics for easy reading.

The 5-speed manual transmission leather-covered shift knob is designed to be comfortable to grip and shift, and the switch for the automatic ride control suspension (see page 22) lets the driver override the computer and initiate the "firm" mode when maximum handling is desired.

Owning this car is made even more attractive by the Super Coupe Extra Value Package. When you order Preferred Equipment Extra Value Package 150A you receive the power lock group; electronic AM/FM stereo radio with cassette and clock; speed control; tilt steering wheel and 6-way power driver's seat at no extra cost. See page 24 or your Ford dealer for full details.



Thunderbird Super Coupe instrumentation in Titanium. Some equipment shown is optional.

DRIVER INTERACTION



A high-performance driver knows that in addition to what is seen, important information about the road and the car is being fed back through the seat, the steering wheel and the foot pedals. In Super Coupe, some of this "input" is sensed by technologically advanced suspension, steering and braking systems that help the driver, car and road interact.

The computer-controlled "speed-sensitive" power steering system adjusts the power to the situation by responding to sensors which provide data on speed and steering angle. This results in smooth, low-effort steering in tight, low-speed manoeuvres and a progressively firmer feel as speed increases.

AN INTELLIGENT SUSPENSION

Super Coupe's suspension system incorporates a micro-processor that monitors signals from speed, brake pressure, steering and acceleration sensors and adjusts shock absorber damping automatically to provide the optimum ride/handling to match the situation. Shock damping is "normal" for a smooth ride or "firm" when extra handling is required ("firm" mode may also be selected manually by means of a switch located on the centre console). These sophisticated features, combined with the anti-lock braking system detailed on page 14, contribute to Super Coupe's extraordinary driving capability and exhilarating performance.

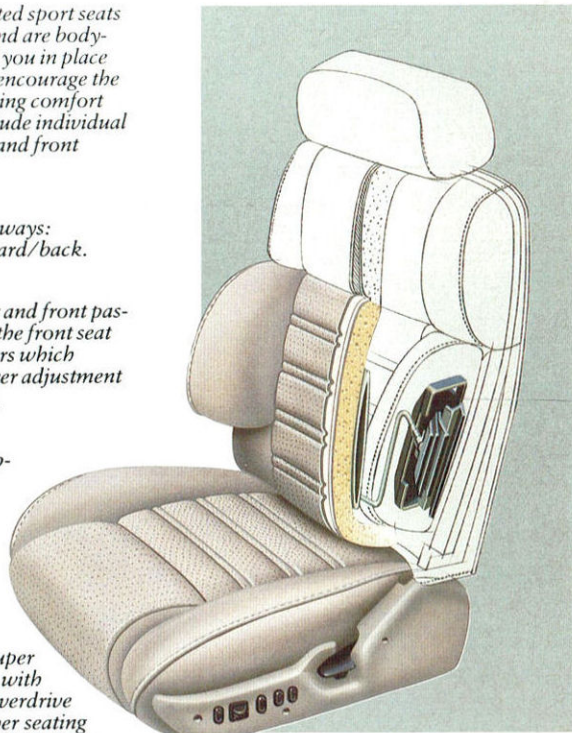
Super Coupe's articulated sport seats provide firm support and are body-contoured to help hold you in place when cornering. They encourage the proper posture for driving comfort and command and include individual recliners for the driver and front passenger.

The headrests adjust 4 ways: up/down and tilt forward/back.

To help keep the driver and front passenger firmly in place, the front seat backs have back bolsters which include an infinite power adjustment for individual comfort.

The power lumbar support also adjusts to an infinite number of positions to fit the seat to the occupant as precisely as possible.

Right: Thunderbird Super Coupe interior shown with optional Automatic Overdrive transmission and leather seating surfaces (includes split fold down rear seat) in Titanium.



PREFERRED EQUIPMENT/EXTRA VALUE PACKAGES

Preferred Equipment Packages are combinations of features that have proven popular with many car buyers. By combining them in groups, we simplify the ordering procedure.

Here's how it works:
 (1) Choose your 1989 Thunderbird (Standard, LX or Super Coupe) (2) Select the Preferred Equipment Package which provides the features you want from the chart at right. (3) A wide range of optional features are available should you wish to further personalize your new Thunderbird.

Extra Value Packages
Standard and LX
 For outstanding Thunderbird value, choose an Extra Value Package which provides Air Conditioning* at no extra cost or other substantial savings.

Super Coupe
 This Extra Value Package includes these popular options at no extra cost: power lock group; electronic AM/FM stereo radio with cassette/clock; speed control; tilt steering wheel and 6-way power driver's seat.
 *Excludes Federal Excise Tax.

Contents of Preferred Equipment and Extra Value Packages are subject to change. For the latest information, consult your Ford dealer.

FORD THUNDERBIRD	PREFERRED EQUIPMENT PACKAGES				
	STANDARD		LX		SUPER COUPE
	140A	EXTRA VALUE 141A	145A	EXTRA VALUE 146A	EXTRA VALUE 150A
3.8L V-6 EFI engine	●	●	●	●	
3.8L supercharged/intercooled V-6 engine					●
4-speed automatic overdrive transmission	●	●	●	●	
5-speed manual overdrive transmission					●
Manual temperature control air conditioning*		●	●	●	●
Luxury light/convenience group		●		●	
Power lock group		●	●	●	●
Dual electric remote-control mirrors		●	●	●	●
Bright window mouldings		●	●	●	
Electronic AM/FM stereo radio with cassette/clock		●	●		●
6-way power driver's seat		●	●		●
Speed control/tilt steering wheel		●	●	●	●
Styled road wheels		●	●	●	
Front floor mats				●	
Keyless entry system				●	
Power radio antenna				●	
Ford JBL audio system				●	
Driver and passenger 6-way power seats				●	
Extra Value Features At No Extra Cost					
Air conditioning*		★			
Substantial savings				★	
Power lock group					★
Electronic AM/FM stereo radio with cassette/clock					★
6-way power driver's seat					★
Speed control/tilt steering wheel					★

★ Order your Thunderbird with Extra Value Package 141A and get Air Conditioning at NO EXTRA COST*. When ordered with Extra Value Package 146A you will receive a substantial discount; and when you order a Thunderbird Super Coupe with Extra Value Package 150A you will get the features indicated in the chart at NO EXTRA COST.

*Excludes Federal Excise Tax.

STANDARD FEATURES AND OPTIONS

FORD THUNDERBIRD	STANDARD	LX	SUPER COUPE
ENGINEERING			
3.8L EFI V-6 engine	S	S	
3.8L supercharged/intercooled V-6 engine			S
4-speed automatic overdrive transmission	S	S	0
5-speed manual overdrive transmission			S
72 amp-hr heavy-duty maintenance free battery	S	S	S
Traction-Lok axle	0	0	S
Engine block immersion heater	0	0	0
71 litre (15.8 imp. gal.) fuel tank	S	S	S
P205/70R15 BSW all-season tires	S	S	
P225/60VR16 BSW performance tires			S
P225/60VR16 BSW all-season tires			0
P205/70R15 WSW all-season tires	0	0	
Conventional spare tire	0	0	
Rack-and-pinion power steering	S		
Speed sensitive rack-and-pinion power steering		S	S
Anti-lock brakes w/4-wheel disc brakes	0	0	S
EXTERIOR			
Tinted glass	S	S	S
Left hand remote-control mirror	S		
Dual electric remote-control mirrors	0	S	S
Bright window mouldings	0	S	
Wide bodyside protection mouldings	S	S	
Narrow bodyside protection mouldings and lower bodyside cladding			S
Colour-keyed bumpers w/black rub strips	S	S	S
Lower bodyside road abrasion protection	S	S	S
Black windshield, door, quarter window, backlight mouldings	S		S
Black windshield/backlight, bright door/quarter mouldings		S	
Aerodynamic halogen headlamps, parking lamps, high-mount stop lamp	S	S	S
Daytime running lights	S	S	S
Deluxe wheel covers	S		
Styled road wheel covers	0	S	
Locking wire-style wheel covers	0	0	
Cast aluminum wheels	0	0	S
INTERIOR			
Cloth and vinyl bucket seats w/recliners	S		
Luxury cloth bucket seats w/recliners		S	
Articulated sport seats with power lumbar and power seat back bolster adjustment			S
Six-way power driver's seat	0	S	0
Six-way power passenger's seat	0	0	0

FORD THUNDERBIRD	STANDARD	LX	SUPER COUPE
INTERIOR (cont'd)			
Leather seating surfaces		0	0
Vinyl door trim w/storage bins and courtesy lights	S		
Luxury door trim w/courtesy lights		S	S
Split fold-down rear seats			0
Full length console w/floor-mounted shift	S	S	S
Front floor mats	0	0	0
Power windows	S	S	S
Side window defoggers	S	S	S
Interval windshield wipers	S	S	S
Illuminated visor mirrors		S	
Rear window defroster	S	S	S
Analog instrumentation	S		
Electronic instrument cluster		S	
Performance instrumentation			S
Instrument panel upper storage compartment		S	S
Speed control and tilt steering wheel	0	S	0
Luxury steering wheel	S		
Leather wrapped luxury steering wheel		S	
Sport soft-feel steering wheel			S
Courtesy dome and luggage compartment lights	S	S	S
Handling suspension with automatic ride control adjustable suspension			S
Illuminated entry system	0	S	0
Power lock group ⁽¹⁾	0	S	0
Luxury light/convenience group ⁽²⁾	0	0	0
Keyless entry system		0	0
Anti-theft system	0	0	0
Power moonroof	0	0	0
Air conditioning	0	S	S
16 oz. cut pile carpet	S		
24 oz. cut pile carpet		S	S
Electronic AM/FM stereo radio w/clock	S		
Electronic AM/FM stereo radio w/cassette and clock	0	S	0
Ford JBL audio system	0	0	0
Power radio antenna	0	0	0
Radio credit option	0		
Digital audio disc player	0	0	0
Premium electronic AM stereo/FM stereo radio with cassette/clock	0	0	0

S-Standard 0-Optional

(1) Includes electric power door locks, remote control electric decklid and fuel filler door releases in glove box.
 (2) Includes cornering lamps, dual illuminated visor vanity mirrors, illuminated entry system, autolamp system, and light group.

SPECIFICATIONS

COLOURS AND TRIMS

SAFETY AND OWNER BENEFITS

STANDARD THUNDERBIRD AND THUNDERBIRD LX

Engine type	3.8 litre V-6
Horsepower/compression ratio	140/9.0:1
Induction system	Sequential multiple-port electronic fuel injection
Fuel tank	71 litres (15.8 imp. gal.)
Transmission	Automatic Overdrive
Front suspension	Long-spindle SLA, variable-rate coil springs, double-acting gas-pressurized shock absorbers, 27 mm dia. stabilizer bar
Rear suspension	Independent SLA, toe control link, variable rate springs, double-acting gas-pressurized shock absorbers, 25 mm dia. stabilizer bar
Steering	STD: Power rack-and-pinion, ratio 14.1:1 on centre LX: Speed-sensitive power, ratio 14.1:1 on centre
Brakes	Power front disc/rear drum
Brakes (optional)	Anti-lock braking system, power four-wheel disc
Wheels	Stamped steel 15" x 6.0"
Wheels (optional)	Cast aluminum 15" x 6.5"
Tires	P205/70R15 BSW
Tires (optional)	P205/70R15 WSW
Tire (spare)	Mini-spare (conventional is optional)

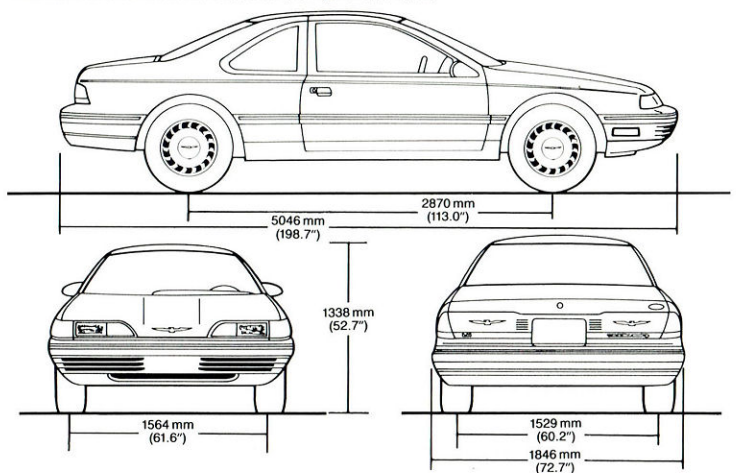
THUNDERBIRD SUPER COUPE

Engine type	3.8 litre supercharged, intercooled V-6 with dual exhausts
Horsepower/compression ratio	210/8.2:1
Induction system	Sequential multiple-port electronic fuel injection
Fuel tank	71 litres (15.8 imp. gal.)
Transmission	5-speed manual overdrive
Transmission (optional)	Automatic overdrive
Front suspension (in addition to standard)	Automatic ride control suspension, 29 mm dia. stabilizer bar
Rear suspension (in addition to standard)	Automatic ride control suspension, 26.5 mm dia. stabilizer bar
Rear axle	Traction-Lok
Steering	Speed-sensitive power, ratio 14.1:1 on centre
Brakes	Anti-lock braking system, power four-wheel disc
Wheels	Cast aluminum 16" x 7.0"
Tires	Goodyear Eagle P225/60VR16 performance
Tires (optional)	All-season Goodyear Eagle GT + 4 performance

MEASUREMENTS

Wheelbase mm (in)	2870 (113.0)
Length mm (in)	5046 (198.7)
Height mm (in)	1338 (52.7)
Width mm (in)	1846 (72.7)
Front tread mm (in)	1564 (61.6)
Rear tread mm (in)	1529 (60.2)
Luggage capacity litres (cu. ft.)	416 (14.7)
Passenger capacity	5

Based on Motor Vehicle Manufacturers Association passenger car specifications



STANDARD THUNDERBIRD AND THUNDERBIRD LX

Exterior Colours	Interior Trim Colours			
	Shadow Blue	Titanium	Currant Red	Light Sandalwood
Black		X	X	X
Light Titanium Clearcoat Metallic	X	X	X	
Deep Titanium Clearcoat Metallic		X	X	
Currant Red Clearcoat Metallic		X	X	
Bright Red		X		
Almond	X			X
Medium Sandalwood Clearcoat Metallic				X
Crystal Blue Clearcoat Metallic	X			
Light Crystal Blue Clearcoat Metallic	X			
Twilight Blue Clearcoat Metallic	X	X		
Oxford White	X	X	X	X

THUNDERBIRD SUPER COUPE

Exterior Colours	Interior Trim Colours		
	Titanium	Currant Red	Shadow Blue
Black	X	X	
Bright Red	X		
Light Titanium Clearcoat Metallic	X	X	X
Twilight Blue Clearcoat Metallic	X		X
Oxford White	X	X	X

Some of the paint and trim colours are shown in this catalogue. On the printed page, of course, colours are at best only representative of the originals. Your Ford dealer can show you actual samples of the paint colours and trim materials presented above.

Ford Motor Company strongly encourages all passengers to use their safety belts.



FORD SAFETY DESIGN FEATURES

Vehicle Operation

- Split service hydraulic brake system with warning light
 - Corrosion-resistant brake lines
 - Flash-to-pass headlamps
 - Turn indicator lever with lane-changing signal feature
 - Hazard warning flasher
 - Backup lamps
 - Side marker lamps
 - Parking lamps coupled with headlamps
 - High-mount stop lamp
 - Interval windshield wipers
 - Windshield washers
 - Outside rear-view mirror, driver's side
 - Glare-reduced instrument panel, windshield wiper arms and windshield pillars
 - Uniform transmission shift quadrant with safety starting switch (on all cars equipped with automatic transmission)
 - Clutch or neutral interlock for starter motor (on cars with manual transmission)
 - Continuously variable control illumination intensity (instrument cluster lighting)
 - Safety hood latch system
 - Responsive windshield defroster system
 - Tamper-resistant (non-reversing) odometer
 - Inertia shut-off switch for electric fuel pumps
- ### Occupant protection
- Safety-designed front end structure
 - Safety-designed roof structure
 - Steel guard rails in side doors
 - Safety-designed door hinges and double-yoke safety door latches
 - Integral lap and shoulder belts with automatic retractors for outboard occupants of front and rear seats
 - Visual and audible seat belt fastening reminders for the driver's seat
 - Lap belts for centre rear seating position
 - Energy-absorbing

steering column and steering wheel

- Energy-absorbing arm-rests and safety-designed door handles
- Energy-absorbing instrument panel with padding
- Energy-absorbing sun visors
- Energy-absorbing front seat back tops
- Self-locking seat back latches
- Head restraints for front occupants
- Safety glove box latch
- Inside yieldaway rearview mirror
- Impact-absorbing laminated safety glass windshield
- Flame-resistant interior materials
- Safety-designed coat hooks
- Safety-designed radio control knobs and push buttons

6-YEAR/100,000 KM POWERTRAIN WARRANTY

Ford's powertrain warranty covers all 1989 cars for 6 years or 100,000 kms (60,000 miles), whichever comes first. This limited warranty covers major powertrain components. Certain restrictions and deductible apply. Ask to see a copy of this warranty when you visit your Ford dealer.

FORD QUALITY CORROSION PROTECTION

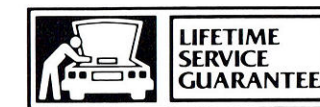
Every Ford car built in North America is protected with the DURAGUARD System, which includes 7 processes built in at the factory as standard equipment, to provide corrosion protection as follows:

- precoated steel on doors, quarter panels, hoods and other selected areas;
- galvanized steel on rocker panels, selected cowl tops and underbody parts;
- vinyl sealer on the underside of rear wheel-houses;
- phosphate coating on the entire car body after a super cleaning process;
- an electrocoat process to apply corrosion resistant primer paint on the entire body;
- aluminized wax sprayed into hard-to-reach lower body areas, and the inside surfaces of doors;
- protective vinyl or urethane coating behind the wheel

openings and along the lower bodyside area.

6-YEAR/160,000 KM CORROSION COVERAGE

The DURAGUARD System is backed by a no-extra charge 6 year/160,000 kilometre (100,000 mile) manufacturer's warranty against corrosion perforation. This warranty, transferable to succeeding owners, covers the cost of both labour and materials for repair of perforation of sheet metal and all other components except exhaust system, caused by corrosion. See your Ford dealer for details of this limited warranty.



Ford dealers* offer the Lifetime† Service Guarantee (Permanent‡ Repair Protection in the Province of Quebec). Under this program, Ford dealers* stand behind their repairs to Ford built cars and light trucks for as long as you own your vehicle. This means you pay for a covered repair once and *never again*. If the same part ever has to be replaced again through normal use, your Ford dealer* will fix it at no charge. No charge for parts. No charge for labour. It doesn't matter where you purchased your vehicle, or whether it's new or used; the work is still covered by the repairing dealer.*

This limited protection covers thousands of parts for vehicles in normal use. Items not covered include regular maintenance parts, belts, hoses, sheet metal and upholstery. See your Ford dealer* for complete details.

*At participating dealers only.

†For as long as you own your car or light truck.



Optional Ford Extended Service Plans cover major components on new Ford cars and light trucks for longer than the vehicle's basic warranty. Your Ford dealer has full details.



Genuine Ford and Motorcraft original equipment replacement parts meet the same high standards as those installed in production.



Ford Credit Canada, Limited is interested in helping to fill the transportation needs of every qualified buyer of a Ford product. A participating dealer can arrange financing terms or a Red Carpet Lease® tailored to your circumstances. Ford Credit Canada, Limited has offices conveniently located throughout Canada.

This brochure has been prepared only as a general guide to the customer and every effort has been made to ensure that all information is correct at the time of printing. However, some errors may have been included and some of the information or specifications may have changed since the time of printing. Your dealer will have full details of any changes and/or corrections and you should ask him to bring you up to date at the time of your purchase. Ford Motor Company of Canada, Limited reserves the right to change prices, colours, materials, specifications and models and to discontinue models without notice and without incurring obligations of any kind.



Quality is Job 1.



FORD THUNDERBIRD



Quality is Job 1.

1989 FORD THUNDERBIRD



FORD THUNDERBIRD