

2005 TAURUS - CROWN VICTORIA THUNDERBIRD ACCESSORIES



PERSONALIZE YOUR TAURUS, CROWN VICTORIA AND THUNDERBIRD WITH GENUINE FORD ACCESSORIES



fordaccessoriesstore.com



2005 TAURUS - CROWN VICTORIA THUNDERBIRD

The performance, reliability and style that make your Taurus, Crown Victoria or Thunderbird so distinctive are the same qualities you'll find in Genuine Ford Accessories. Designed and engineered for a precise fit, they're backed by one of the industry's strongest limited warranties.





1. Styled Bug Shield

Protect the leading edge of the vehicle. Deflects road debris, stones and bugs from the front of your hood and helps keep rain from the windshield. Easy no-drill installation. Constructed of virtually unbreakable, smoke-colored GE Lexan® acrylic. Crown Victoria and Taurus only. Base Part No. **16C900**

2. Full Front End Cover

Heavy-duty vinyl shields front end from bugs, stones and off-road debris. Flannel backing minimizes moisture buildup between the cover and the painted surface. Multi-piece construction lets you open hood without removing the cover. Base Part No. **19A413**

3. Side Window Deflectors

Deflectors keep out snow or rain so you can crack open the window and let fresh air in. Durable, smoke-colored acrylic. Self-stick adhesive for easy installation. Set of 4. Crown Victoria and Taurus only. Base Part No. **18246**



4. Molded Splash Guards

Deflect mud, snow and ice away from lower body panels. Contoured design complements vehicle lines and gives excellent protection. Heavy-duty plastic construction resists cracking. Packaged in pairs for front or rear (Crown Victoria); packaged in pairs for front only (Taurus Sedan). NOTE: Specify trim level. Crown Victoria and Taurus Sedan only. Base Part No. **16A550**

5. Flat Splash Guards

Guard against mud, snow and ice. Durable splash guards are embossed with the vehicle's name. Packaged in a 2-piece set. Crown Victoria and Taurus only. Base Part No. **16A550**

6. Chrome Side-View Mirror Trim

Reflect your sense of style with a custom look. Heavy-duty plastic caps offer the appearance of chrome. Available for right-hand and left-hand sides. Dealer installation recommended. Crown Victoria only. Base Part No. **17D742** Right-hand side Base Part No. **17D743** Left-hand side

7. Custom Wheel*

Designed specifically for your vehicle, this custom wheel meets Ford's rigorous appearance, durability and corrosion-resistance requirements. Wheel is kitted and includes the wheel, brushed aluminum center cap and chromed lug nuts (most applications). Taurus only. Base Part No. **1007**

2F1Z-1007-CA; fits Taurus 16" X 6" Bright machined aluminum directional 5-spoke, sport-style.

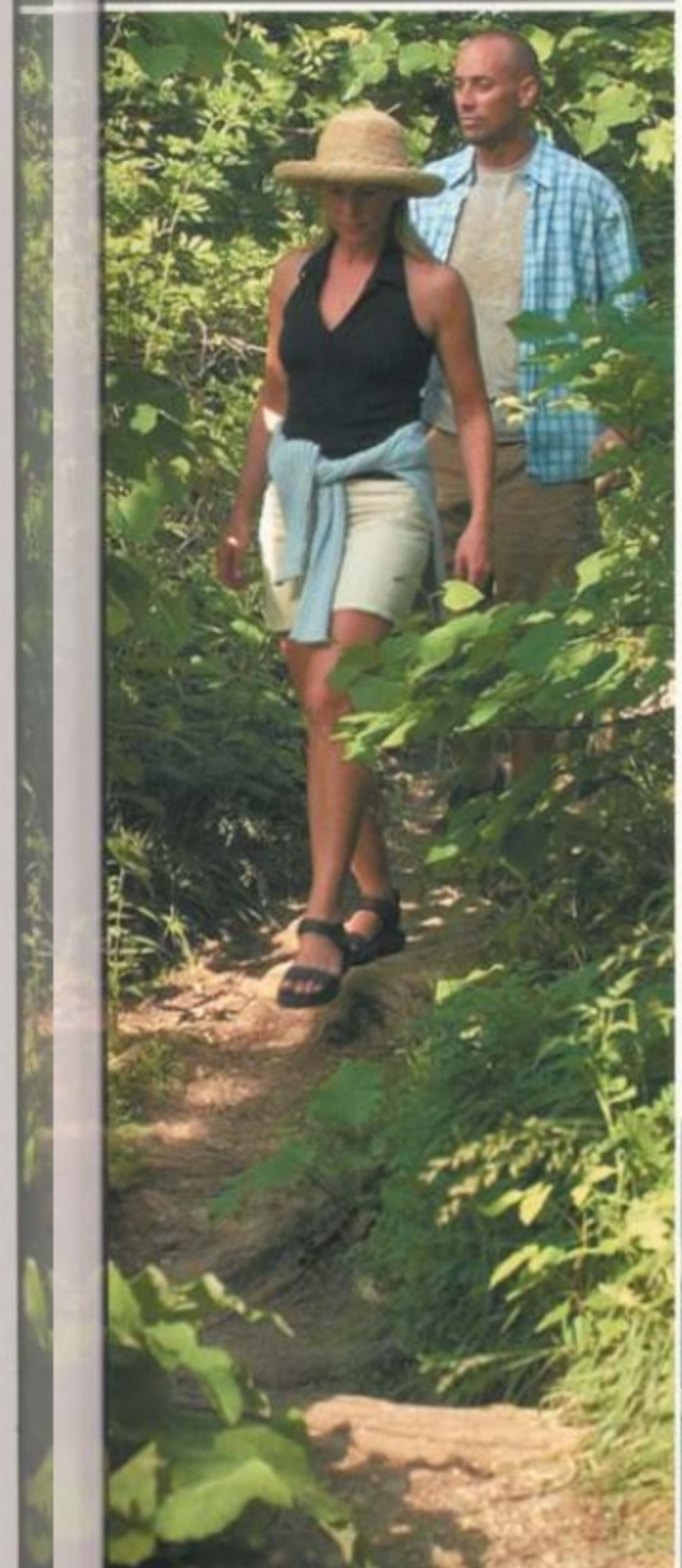
Protect your wheels!
See page 11 for Wheel Locks.

8. Rear Spoiler*

Made from ABS plastic to precision original equipment specifications, the spoiler comes painted in select exterior colors and in primed/ready to paint. Dealer installation recommended. Taurus Sedan (with third brake light) and Crown Victoria (without light) only. Base Part No. **44210**

**Eligible for residualization under a Ford Credit Red Carpet Lease.*

ENTICING EXTERIORS





INSIDE AMENITIES



9. Electrochromic Mirrors and Electrochromic HomeLink® Mirrors

Ease the discomfort of headlight glare in your rearview mirror. Automatically dims when glare is detected. Electrochromic Mirrors are available with built-in compass only or with the added feature of a temperature display. New Electrochromic HomeLink Mirrors have a wireless control feature that allows you to activate home lighting, open garage doors, disarm security systems, and communicate with any radio-frequency-controlled home device from your vehicle. They are also available with compass only or with compass/temperature display. Dealer installation recommended. Base Part No. **17700**

10. Smoker's Pack and Ash Cup/Coin Holder

Add an ash cup and a lighter to your vehicle. The ash cup/coin holder is designed to fit in cup holders and includes a lid to keep ashes or spare change in place. It's constructed of a durable thermoplastic and removes easily for cleaning. Both the ash cup and lighter mount to the center console. Base Part No. **04788** Ash Cup (Taurus and Thunderbird only) Base Part No. **04788** Ash Cup w/Lighter Element (Taurus only)

11. All-Weather Vinyl Floor Mats

The deep grooves and raised ridges in these heavy-duty mats catch and hold snow, slush and mud, while protecting

the vehicle carpeting. Nibbed backing and driver-side positive retention help keep mats in place. Available in colors that complement your vehicle interior. Thunderbird available with front mats only. Base Part No. **13086** Front Base Part No. **13106** Rear

12. Carpeted Floor Mats

Premium-grade carpeting is custom fit to the exact contour of each vehicle. Driver-side mats have positive retention, and all mats have a nib backing to help prevent slippage. Four-piece kits. Thunderbird available with set of two front mats. Base Part No. **13300**

13. Hands-Free Cell Phone Prep Harness

(not pictured) Hands-free Cell Phone Prep Harness is an easy, plug-and-play way to integrate hands-free cell phone car kits to your vehicle. It provides the interface between your vehicle's audio system and most hands-free car kits. Harness connects to vehicle's radio and supplies the necessary wiring to attach most hands-free car kits available in the aftermarket. See your dealer for details. Thunderbird only. Base Part No. **19A393**

14. Trunk Cargo Organizer

Premium-grade polyethylene with a removable, adjustable divider system for separating items. Installs easily in trunk area - no tools required. Crown Victoria organizer fits in the deep well of the trunk with removable top panels (carpeted) that, when in place, provide a flat trunk floor. Also helps protect vehicle interior from spills. Crown Victoria only. Base Part No. **54115A00**

15. Cargo-Logic®

A smart way to protect the cargo area and keep cargo restrained. Liner features molded construction that provides a stain-resistant and moisture-resistant barrier. Four Cargo-Loks® supplied. Vehicle-specific embroidered logo. Taurus only. Base Part No. **11600**

16. Interior Cargo Organizer

Removable and adjustable divider system helps separate and organize your belongings. Made of premium-grade polyethylene, it installs easily in the cargo area with no tools required. Offered in black with Ford Oval logo. Taurus Wagon only. Base Part No. **54115A00**

17. Trunk Cargo Net

Keep packages and other loose items from spilling in your vehicle. The netting stretches easily over bulky-shaped items and the soft braided cording won't scratch painted surfaces. Corner hooks attach to existing rings (or install those provided) in vehicle's cargo area. Installs easily; no tools required. Base Part No. **5455066** Crown Victoria Base Part No. **54550A66** Taurus Base Part No. **6355066** Thunderbird

18. Interior Molded Cargo Tray

Durable, lightweight polyethylene tray is molded to the contours of your vehicle. Raised lip helps contain spills. Black only. Installs and removes easily without tools. Taurus only. Base Part No. **11600**

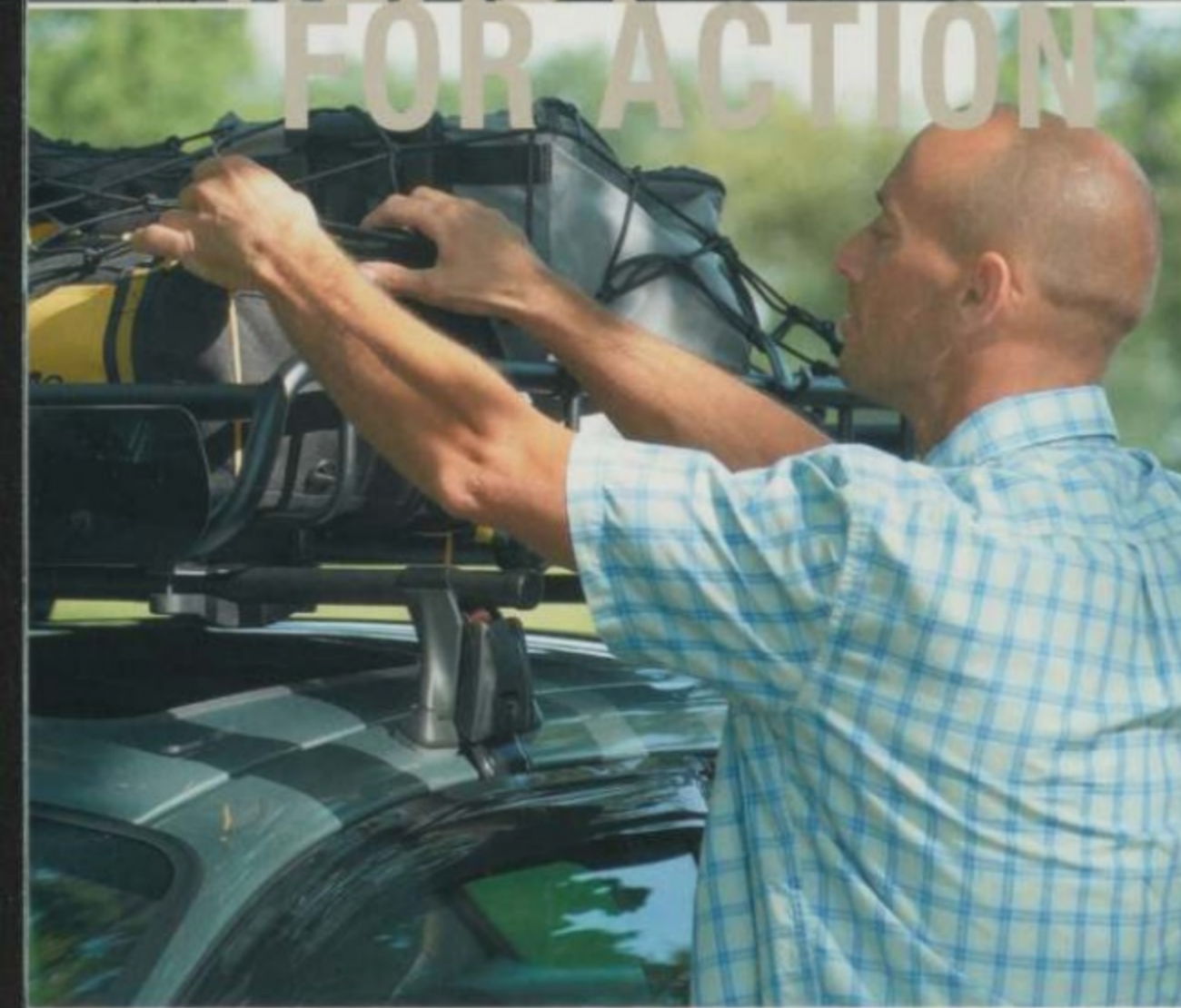




19



20



21



22

19. Removable Roof Rack by Yakima™

Easy to use, this removable rack allows you to carry skis, snowboards, bikes or luggage when you purchase the carriers (sold separately). Soft, nonskid footpads help prevent damage to the roof's surface. Integral locks help prevent theft. Taurus Sedan only. Base Part No. 55100

20. Raised Round Cross Bars by Yakima™

Mount directly to the factory side rails and provide additional carrying capacity. Hold up to four bike carriers, as well as our other equipment carriers (sold separately). (LoadWarrior shown; sold separately). Taurus Wagon only. Base Part No. 55100

21. SportRack® Cargo Boxes

Constructed of durable, black ABS plastic, these boxes go the extra mile to ensure that your gear is well protected. The small cargo box is 90" x 21" x 13.8" (229 cm x 53 cm x 35 cm) and is designed to carry up to six pairs of skis, with a capacity of 11.3 cubic feet (320 liters). Our medium box is 70.9" x 31" x 16" (180 cm x 79 cm x 41 cm) and is designed to carry larger items like suitcases. Its capacity is 15.5 cubic feet (440 liters). Taurus only. Base Part No. 55100

22. LoadWarrior by Yakima™

Large, safari-style basket can carry a load of gear, as well as bikes, skis, canoes or kayaks. Measures 44" x 39" x 6.5" deep (112 cm x 99 cm x 17 cm). Yakima carriers (sold separately) can be mounted directly to the LoadWarrior basket. Fits raised round cross bars (sold separately). Add the extension (Taurus Wagon only) to increase LoadWarrior length by 18" (46 cm). Taurus only. Base Part No. 55100
Rack or extension



22

23. Luggage/Cargo Basket by Yakima™

Constructed of heavy-duty, vinyl-covered steel mesh, this basket measures 26.5" x 38.75" x 2" tall (67 cm x 97 cm x 5 cm). Includes a stretch net to secure cargo. Fits raised round cross bars (sold separately). Taurus only. Base Part No. 55100

24. Kayak Carrier by Yakima™

Designed to carry kayaks on edge while minimizing side-to-side movement. Carrier installs easily, requiring no tools. Will fit Taurus Sedan with Yakima removable roof rack and Taurus Wagon with Yakima raised round cross bars (sold separately). Can also mount to LoadWarrior cargo rack. Cargo straps can be purchased from your local sporting goods store. Taurus only. Base Part No. 55100

25. Canoe Carrier by Yakima™

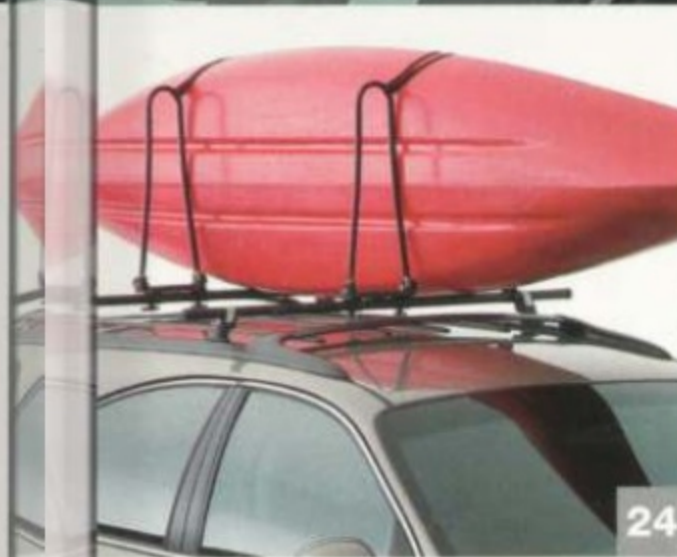
Will fit Taurus Sedan with Yakima removable roof rack and Taurus Wagon with Yakima raised round cross bars (sold separately). Installs easily, no tools required. Cushioned brackets help protect the gunwales of your canoe from scratches. Cargo straps can be purchased from your local sporting goods store. Taurus only. Base Part No. 55100

26. Framed Luggage Carrier

Provides an extra 10.5 cubic feet (297 liters) of cargo space for all your extras. Lightweight tubular frame is covered with durable vinyl, and the carrier has a rigid floor for added stability. It attaches easily to factory racks and offers additional carrying capacity. Zippered side opening makes it simple to load. Double flap design provides water resistance. Approximately 50" x 41" x 17" (127 cm x 104 cm x 43 cm). Taurus Wagon only. Base Part No. 19B507



23



24



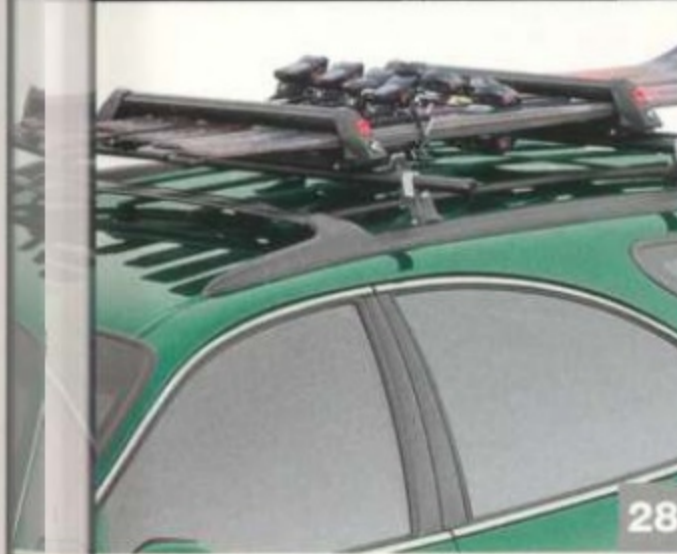
25



26



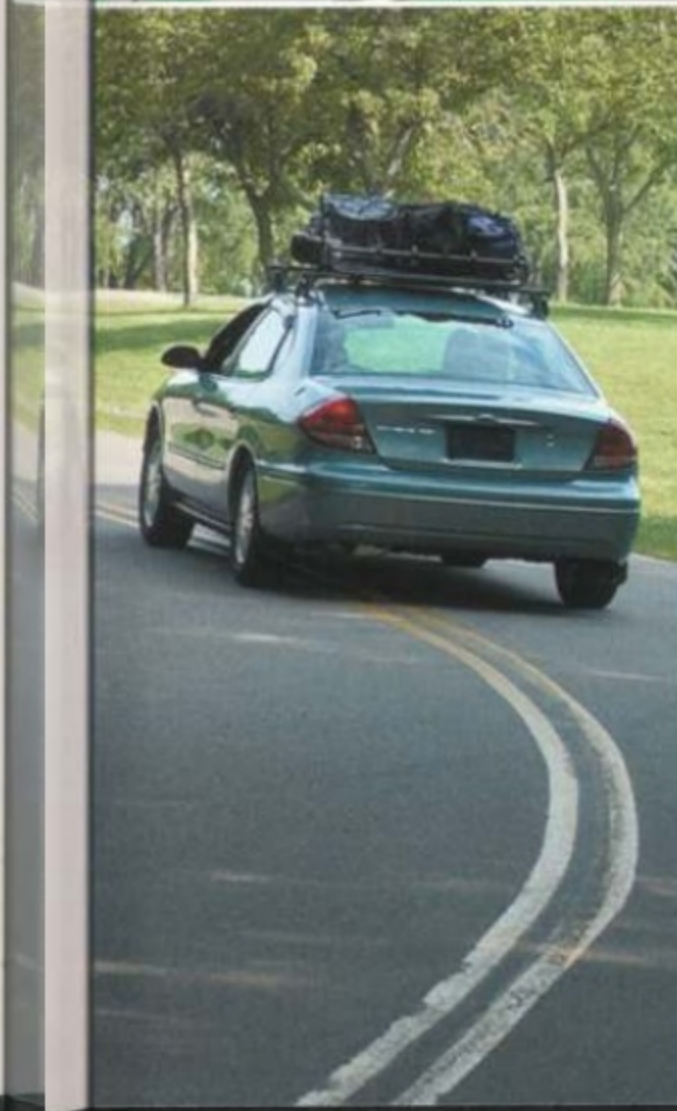
27



28



29



30



27. Soft Luggage Bag

Durable, exterior-grade canvas is flexible enough to allow you to carry odd-shaped items and folds neatly away when not in use. Measures 37" x 30" x 12" deep (94 cm x 76 cm x 30 cm). Zippered opening is covered with a Velcro®-close flap. Nylon web straps secure it to the roof rack. Mounts between the cargo racks. Taurus Wagon only. Base Part No. 19B507

28. Horizontal Ski/Snowboard Carriers by Yakima™

Holds up to six pairs of skis or four snowboards. Features soft rubber padding to protect the finish on skis and integral locks. Carrier installs easily on factory roof rack, removable roof rack or raised round cross bars (sold separately); no tools necessary. Snowboard Carrier adapter included. Taurus only. Base Part No. 55100

29. Frame Mount Bike Carrier by Yakima™

On your next trip, take your bike along for the ride. Each carrier holds one bike and features a locking arm with a durable padding that clamps onto the bike's downtube to protect its finish. Built-in cable guides guard against damage to brake or shifter cable. For use on original equipment or removable roof rack applications, as well as on raised round cross bars (sold separately). Taurus only. Base Part No. 55100

30. Fork Mount Bike Carrier by Yakima™

This easy-to-install bike rack uses a locking 9 cm-long skewer, which opens to accommodate the bicycle fork and works as a true quick-release. Each carrier holds one bike and includes an integrated lock. For use with removable roof rack or raised round cross bars (sold separately). (Shown mounted on LoadWarrior.) Front wheel holder is available and sold separately. Taurus only. Base Part No. 55100 (50148 for Wheel Holder)



PEACE OF MIND



31. Daytime Running Lamp Module

This system automatically activates the low-beams at 75% of their normal operating voltage whenever the ignition is in the "on" position. Dealer installation recommended. Crown Victoria only. Base Part No. **13B218**

32. Full Vehicle Cover

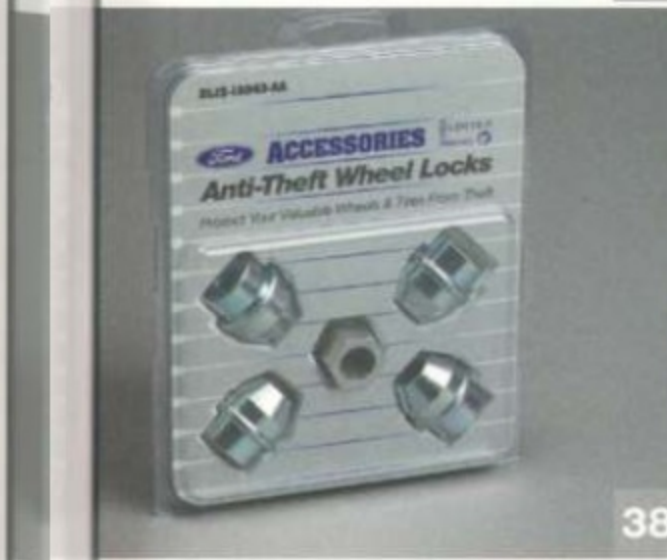
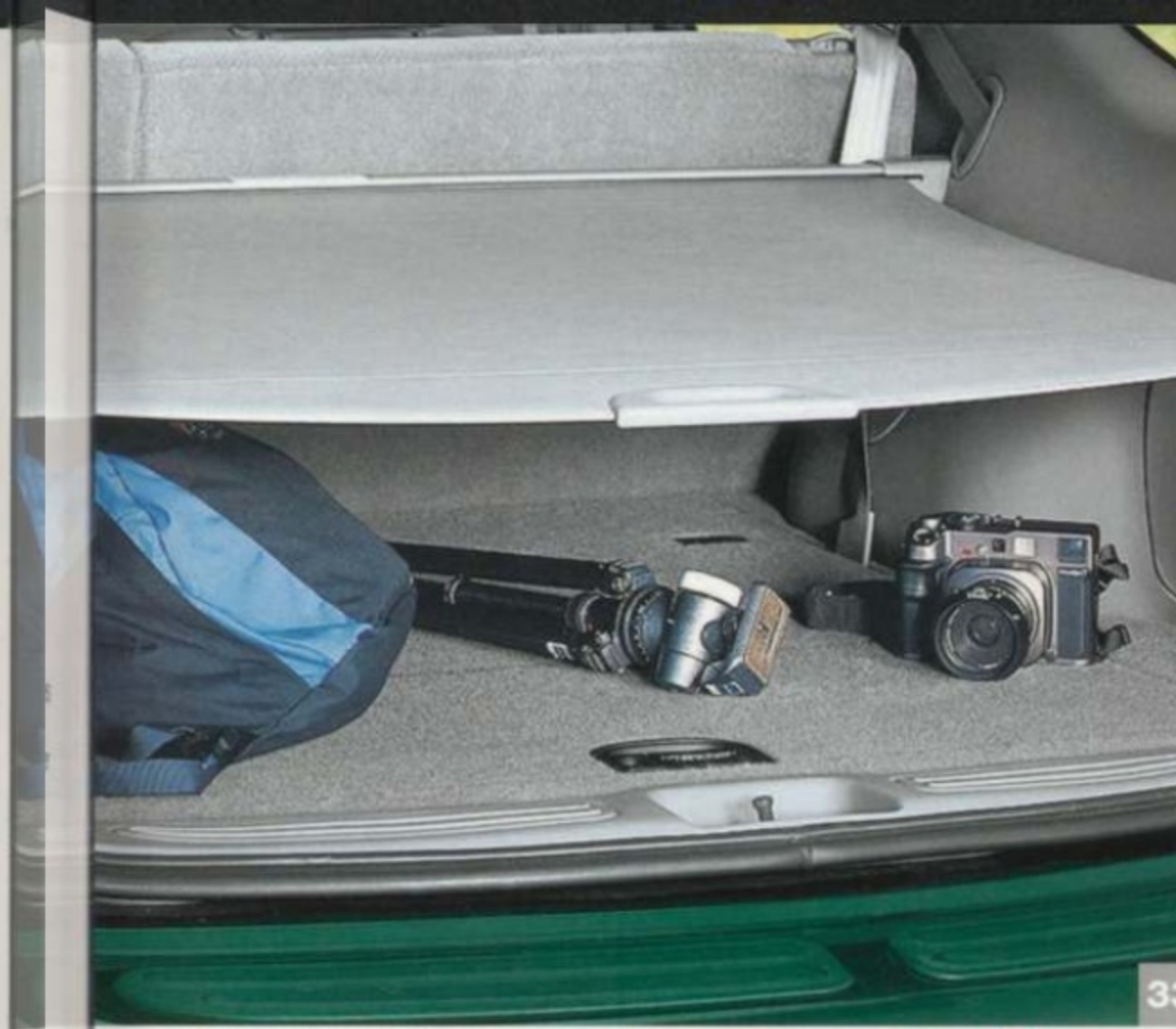
Constructed of multi-layer, non-woven, breathable material, NOAH® covers resist rain, snow, acid rain and bird droppings, and protect your vehicle's finish from UV rays and door dings. Features double-stitched overlapped seams, elastic sewn into the front and rear hems to help hold cover in place, and non-scratch grommets that can be used with a tie-down rope (included) or a cable and lock (not included). Thunderbird also available with Weathershield™ fabric that features the Nextec® encapsulation process for excellent protection and compact storage. Each cover has a silk-screened logo on front and a license plate view window in rear. Base Part No. **19A412**

33. Cargo Security Shade

Conceal your belongings with this heavy-duty vinyl shade. Mounts behind rear seat above the cargo area and retracts when not in use. Available in colors to match the vehicle interior. Taurus Wagon only. Base Part No. **45440**

34. Remote Start Systems*

Enjoy the comfort and convenience of a pre-warmed or pre-cooled vehicle. Systems start vehicle from up to 500 ft. (150 m) away, and ensure that it's locked and that its security system (if equipped) is armed. Comes with two remote transmitters. Two systems to choose from: Remote Start only; and Remote Start and Vehicle Security. Securilok® kit (sold separately) required for most applications. Dealer installation recommended. Base Part No. **19G364** (**19G365** for Securilok®)



35. Highway Safety Kit

Convenient carrying kit includes a first-aid kit, a reflective triangle, a flashlight, bungee cords, a thermal blanket, cotton gloves, hose tape, a multifunction knife, Phillips and slotted head screwdrivers, 12-hour light stick, jumper cables and pliers. Base Part No. **19F515**

36. Vehicle Security Systems*

Protect your vehicle with a state-of-the-art security system. These systems offer a full range of security features and come complete with pocket-sized transmitters. Three systems to choose from: Vehicle Security only; Deluxe Vehicle Security; and Vehicle Security with Remote Start. Includes a Lifetime Limited Warranty on parts (contact dealer for complete details). Dealer installation recommended. NOTE: Vehicles equipped with a security system may be eligible for insurance discounts in some states/provinces. Base Part No. **19A361**

37. Remote Keyless Entry*

Remote keyless entry will let you lock and unlock the doors from up to 50 ft. (15 m) away. System features remote illuminated entry, which turns on the dome light, and a one-button personal protection panic feature that activates the vehicle's horn. Includes two hand-held remotes. Dealer installation recommended. Crown Victoria and Taurus only. Base Part No. **220K51**

38. Wheel Locks

For added protection against wheel theft, replace one lug on each wheel with one of these locks. Chrome-plated locks available for exposed lugs (Taurus only); open-ended, zinc-plated locks available for hidden lugs (Taurus and Thunderbird only). Kit includes four locks and key. Chrome set shown. Base Part No. **1A043**



39. Keyless Entry Keypad

Conveniently unlock your vehicle without your key or keyless entry remote. No wiring necessary – programmable, backlit keypad tunes to the same frequency as your transmitter. Long-life battery (lasts 100,000 cycles). Easy no-drill installation. For vehicles equipped with factory remote keyless entry. Taurus and Thunderbird only. Base Part No. **14A626**

40. First-Aid Kit

Compact case fits into glove compartment or center console so it's always there when you need it! Contains general first-aid items such as bandages, gauze, antibacterial ointment and more. Base Part No. **19F515**



*Eligible for residualization under a Ford Credit Red Carpet Lease.

Limited Warranty Information

Ford Motor Company will repair or replace any properly dealer-installed Genuine Ford Accessory found to be defective in factory-supplied materials or workmanship during the warranty period, as well as any component damaged by the defective accessory.

This means that Genuine Ford Accessories purchased along with your new vehicle are covered for the full length of your New Vehicle Limited Warranty — 3 years or 36,000 miles (whichever occurs first) should installation occur during this time. If you choose at a later date to purchase a Genuine Ford Accessory, it will be covered for 12 months or 12,000 miles (whichever occurs first). Contact your dealer for details and a copy of the warranty.

Red Carpet Lease

Get the ride you want. Many Genuine Ford Accessories purchased and installed by the dealer at lease inception can be paid for in your monthly lease payment. See your Ford Dealer for details.

ESP PremiumCare Plan

Depending on the ESP Plan you select, some dealer-installed Genuine Ford Accessories can be covered for up to 7 years or 100,000 miles. See your Ford Dealer for details.

NOTE: The product descriptions and specifications contained herein were correct at the time this material was being prepared for printing. However, our policy is one of continuous improvement, and we reserve the right to change design or specifications at any time without notice and without incurring obligation.



fordaccessoriesstore.com

PRINTED IN U.S.A. ABT-4046 SEPTEMBER 2004