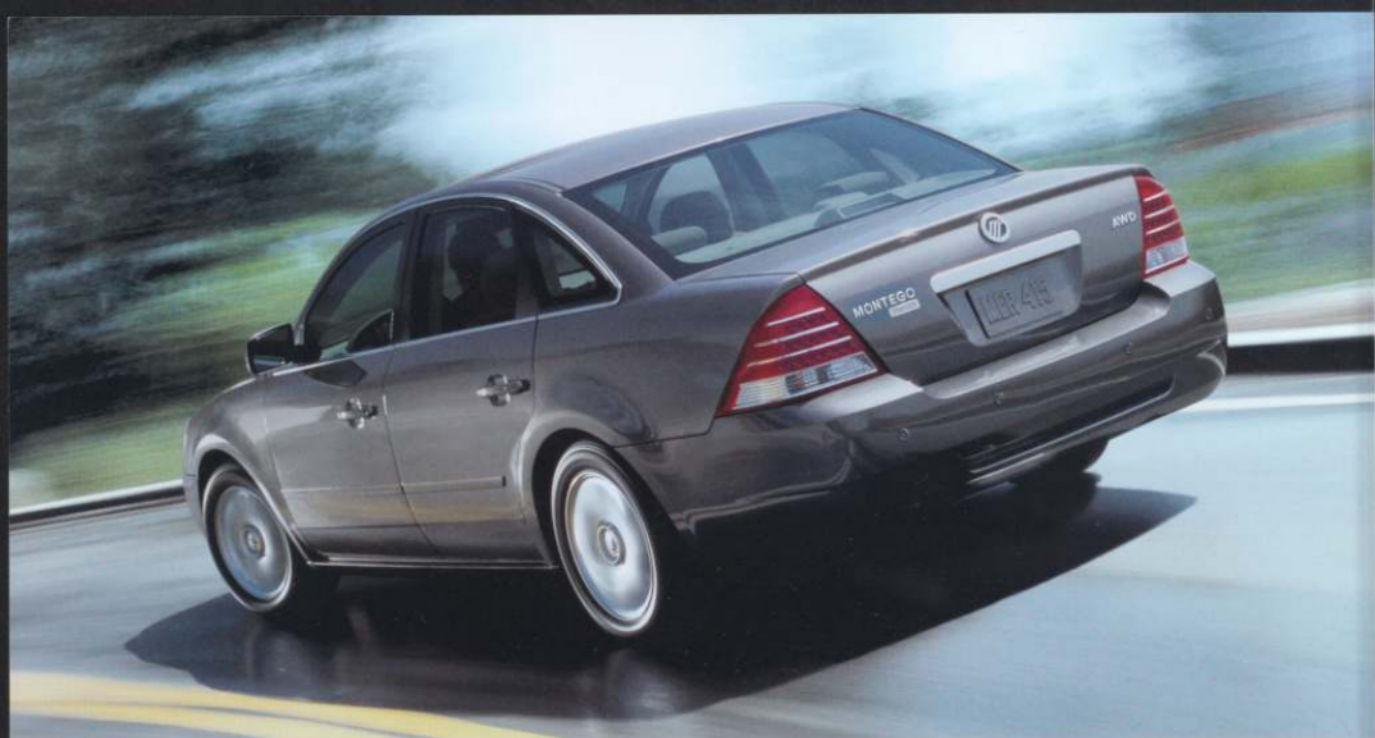




MONTEGO
2005



MERCURY



INTRODUCING MONTEGO. FROM MERCURY.

With the introduction of the all-new Montego, a new Mercury is decidedly taking shape. From every angle, Montego excites your eyes and hooks your heart. The far-reaching light from its HID headlamps and bright red glow from its LED taillamps address your passion for technological excellence. The satin-finish waterfall grille and bright Mercury emblem kindle your love for modern design. Clearly, the time to discover Mercury – and the all-new 2005 Montego – is now.

Exceedingly Smooth CVT Montego's available class-exclusive* Continuously Variable Transmission (CVT) wraps smooth acceleration and responsive power in an even, steady ride. It also offers a strong drive ratio for accelerating and passing, and an economical ratio for maximizing fuel economy when cruising.

All-the-Time Traction Combine Montego's available first-in-class All-Wheel Drive (AWD)** with its available Traction Control, and you'll maintain momentum even if only one wheel has grip.

Above: Montego Premier shown in Dark Shadow Grey Metallic with available AWD and Reverse Sensing System. Shown on cover: Montego Premier in Silver Frost Metallic with available power moonroof.

*Standard 5-passenger Large Car class.

**Available on all Montego models.

SLEEK AND SOPHISTICATED



Best-in-Class Trunk Space and Versatile Folding Seats With its astounding 21.2 cu. ft. of trunk volume, Montego has the largest trunk of *any* sedan. Folding down the 60/40 split-folding rear seat expands trunk floor length to a full 49.9." Need to transport even longer items? Fold down the front-passenger seat in addition to the rear, and you can fit items up to 9' long through the trunk.

Command Seating Montego was designed around a Command Seating™ position from its inception. Because the driver's seat sits higher off the ground, benefits of this innovative thinking include easier entry and exit, a more upright seating position, and an excellent view of the road as you navigate through traffic. Instead of just seeing the road, you'll command it in ways you never expected.



MONTEGO SEATING IS HIGHER THAN OTHER SEDANS IN ITS CLASS



Delightful Design Details You'll find them everywhere in Montego. Like the chrome-finish trim rings around the instrument panel gauges or the satin-aluminum finish on the floor shifter. The perforated leather-trimmed seats on Premier even feature contrasting tailored stitching.



The Luxury of Space Uncommonly airy, Montego's interior environment provides complete comfort for up to 5 adults. In fact, Montego is the most spacious sedan in its class when it comes to total passenger volume. And thanks to its efficient use of space, rear-seat head and leg room are best in class also – and more generous than many larger vehicles.



18" Machined-Aluminum Wheels The modern, machined finish gives these wheels an upscale style, standard on Premier. Every Montego features large rotors and disc-brake pads that aid braking power and response time.

FOR MORE INFORMATION, PLEASE VISIT
WWW.MERCURYVEHICLES.COM
 OR DETACH AND MAIL THIS CARD.

First Name

Middle Initial

Last Name

Address

City

State

ZIP

Telephone (including area code)

1. I am interested in:

Grand Marquis

Mariner

Montego

Monterey

Mountaineer

Sable

2. I am looking to purchase or lease a new vehicle in:

0-30 days

1-3 months

4-6 months

7-12 months

More than 1 year

3. Vehicles currently in my household:

Year (e.g., 2002)

Make (e.g., Mercury)

Model (e.g., Mountaineer)

Year (e.g., 2002)

Make (e.g., Mercury)

Model (e.g., Mountaineer)

4. Yes, I'd like to receive product information or special offers from Mercury via e-mail.

Email address:

ICMHEBC10501 1736204



MERCURY | NEW DOORS OPENED

NO POSTAGE
NECESSARY
IF MAILED
IN THE
UNITED STATES



BUSINESS REPLY MAIL

FIRST-CLASS MAIL PERMIT NO. 25 DEARBORN MI

POSTAGE WILL BE PAID BY ADDRESSEE

MERCURY PROGRAM HEADQUARTERS
PO BOX 1483
DEARBORN, MI 48121-9700



MONTEGO KEY STANDARD FEATURES

LUXURY

POWERTRAIN/FUNCTIONALITY

- 3.0L 4-valve DOHC Duratec 30 V-6 engine
- 4-wheel disc Anti-lock Brake System (ABS)
- 5-speed automatic transmission

EXTERIOR

- 17" 7-spoke painted aluminum wheels
- Body-color power, heated, folding sideview mirrors with security approach lamps
- Fog lamps
- High-Intensity Discharge (HID) headlamps
- Keyless-entry keypad
- Light-Emitting Diode (LED) taillamps
- Remote keyless-entry system with 2 key fobs

INTERIOR

- 6-way power driver's seat with manual lumbar
- AM/FM stereo/single-CD player
- Auto-dimming rearview mirror
- Command Seating™
- Dual-zone Electronic Automatic Temperature Control (EATC)
- Front-passenger fold-down seatback
- Front-row bucket seats
- Front-row center console with armrest, storage and 2 cupholders
- Leather-wrapped shift knob and steering wheel with audio and speed controls
- Message center/trip computer with compass
- Overhead console with dome light, map light and sunglasses holder
- Power door locks
- Power remote trunk release
- Power windows with one-touch-up/down driver's-side feature

- Rear-seat 60/40 split fold-down seatback
- Rear-seat center fold-down armrest with cupholders
- Tilt-adjustable steering column

SAFETY/SECURITY

- Belt-Minder® safety belt reminder
- Personal Safety System™ with dual-stage driver and front-passenger airbags, driver's-seat position sensor, and crash severity sensor
- SecurLock® passive anti-theft system
- SPACE Architecture™ – Side Protection And Cabin Enhancement

AVAILABLE EQUIPMENT

- AWD with Continuously Variable Transmission
- Comfort Package – AM/FM stereo/6-disc in-dash CD changer with MP3 capability, 2-way power front-passenger seat, and driver's seat with power recline
- Leather interior trim
- Power moonroof with one-touch-open/-close
- Reverse Sensing System
- Safety Package – Safety Canopy™ System for front and rear passengers with rollover sensor, and driver and front-passenger side-impact airbags
- Traction Control

PREMIER

Includes the Luxury features, plus:

POWERTRAIN/FUNCTIONALITY

- Traction Control

EXTERIOR

- 18" 15-spoke machined-aluminum wheels
- Body-color, power, heated, folding sideview mirrors with security approach lamps and memory
- Pirelli P225/55R18 BSW tires

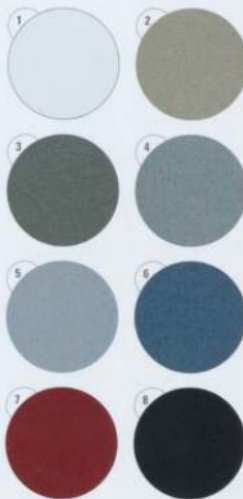
INTERIOR

- 4-way power front-passenger seat
- 8-way power driver's seat with manual lumbar
- Audiophile Sound System with AM/FM stereo/6-disc in-dash CD changer with MP3 capability
- Driver's seat with memory and power recline
- Front-passenger seat with manual lumbar
- Heated front seats
- HomeLink® Universal Transceiver
- Leather interior trim
- Outside temperature display
- Power-adjustable pedals with memory
- Storage compartment in rear armrest with 2 cupholders
- Trunk cargo net

AVAILABLE EQUIPMENT

- AWD with Continuously Variable Transmission
- Power moonroof with one-touch-open/-close
- Reverse Sensing System
- Safety Package – Safety Canopy System for front and rear passengers with rollover sensor, and driver and front-passenger side-impact airbags

EXTERIOR COLORS**



- 1 Oxford White
- 2 Light French Silk Metallic
- 3 Dark Shadow Grey Metallic
- 4 Light Tundra Metallic
- 5 Silver Frost Metallic
- 6 Norseae Blue Metallic
- 7 Merlot Metallic
- 8 Black

*Always wear your safety belt and secure children in the rear seat. **Colors are representative only. Not all colors are available on all models. Please see your Lincoln Mercury Dealer for color/trim combinations. EPA-estimated fuel economy: 6-speed automatic/FWD: 21 mpg city/25 highway and CVT/AWD: 19 city/25 highway.

Following the publication of this brochure, certain changes in standard equipment, options, prices and the like, or product delays may have occurred which would not be included in these pages. Your Lincoln Mercury Dealer is your best source for up-to-date information. Lincoln Mercury reserves the right to change product specifications at any time without incurring obligations. Options shown or described in this brochure are available at extra cost and may be offered only in combination with other options or subject to additional ordering requirements or limitations.