



2006

E-SERIES





NATURAL BORN LEADER

In life, there are certain things you just have to admire. Like the Ford E-Series. Since it first hit the scene over 40 years ago, it's earned the respect of everyone from families to tradespeople. E-Series is designed to accommodate you while offering numerous choices to meet your needs. Need to haul building materials to a construction site? E-Series can tow up to 5 tons of it with ease. Have to get 15 people to the airport? Here's a wagon that can handle them all. No wonder it's been the leader in sales for 26 years in a row. People recognize a strong leader when they see one. Ford E-Series works hard to earn your vote.



2006 FORD E-SERIES



CONTENTS

NEW ADVANCETRAC® WITH ROLL STABILITY CONTROL	3
ROOMY COMFORT	5
VERSATILE TOOL	7
VOCATIONAL PLATFORM	9
POWERFUL PERFORMER	11
SPECIFICATIONS	13

Vehicles throughout this catalog are shown with optional and aftermarket upfit equipment.



E-350 SUPER DUTY EXTENDED-LENGTH XLT WAGON
IN GOLD ASH METALLIC WITH AVAILABLE EQUIPMENT

STEADY AS SHE GOES

When you've got a big crew and a boatload of gear, it's nice to have a vehicle that helps you navigate with confidence. That vehicle is the E-Series Wagon. It has the power and smooth ride and handling to make every trip a pleasurable one. For added peace of mind, E-Series Extended-Length Wagons now come with AdvanceTrac® with Roll Stability Control (RSC). You'll

appreciate this innovative system, especially when your wagon is carrying precious cargo and you're traveling over a slippery road. RSC helps keep you sure-footed and helps you get to your destination. E-Series is the only vehicle in its class to offer this advanced system. AdvanceTrac with RSC is just one more reason to choose an E-Series Extended-Length Wagon for your crew.



NEW ADVANCETRAC WITH RSC

3

COME WHAT MAY

ADVANCETRAC WITH RSC helps deliver the peace of mind and confidence every driver desires. AdvanceTrac is an **ELECTRONIC STABILITY ENHANCEMENT SYSTEM** that improves control on slippery surfaces like icy, gravel or rain-soaked roads. RSC detects potential rollover-type situations and **QUICKLY ENGAGES ADVANCETRAC** to help you maintain control.

Remember that even advanced technology cannot overcome the laws of physics. It's always possible to lose control of a vehicle due to inappropriate driver input for the conditions.



ADVANCETRAC RSC



E-SERIES XLT WAGON WITH MEDIUM FLINT INTERIOR

STRIKE UP THE VAN

Have you got a band on the run? Good thing your E-Series Wagon is part of your team. It's designed to enable you to take in more activities with more people. E-Series is one capable and versatile people mover. Its massive interior provides abundant room for all your travel guests and their gear. How many are along for the ride? Your seating choices include 7-, 8-, 11-, 12-, 14- or even 15-passenger configurations. For those who like a bit more luxury, E-Series Chateau offers

sumptuous seating – a 7-passenger configuration with available leather-trimmed quad captain's chairs and 6-way power driver's seat. Tell the band to bring along their tunes, because Chateau comes with an AM/FM stereo with a CD player. And for your comfort, air conditioning comes standard on all E-Series van and wagon models. Have lots of stuff to haul? E-Series can tow up to 5 tons. E-Series... the perfect band aid.

Passenger and cargo capacity limited by weight and weight distribution.



ROOMY COMFORT

5

ON WITH THE SHOW

E-Series Chateau features **QUAD CAPTAIN'S CHAIRS** trimmed in your choice of available leather trim or standard cloth. They're designed to put your comfort first. An available **REAR-SEAT DVD ENTERTAINMENT SYSTEM*** will keep passengers occupied for hours. The multimedia-compatible DVD player features a **10.4" FLIP-DOWN SCREEN** and can **PLAY DVD, VCD, SVCD, CD, CD-R/RW** and **MP3 FORMATS**. A game port, unified remote and **2 SETS OF WIRELESS STEREO HEADPHONES** are also included.



*Modified Vehicle Engineering (MVE) qualified installed option. See your Ford Dealer for details.

FORDVEHICLES.COM



E-150 VAN IN SILVER METALLIC WITH AVAILABLE ALUMINUM WHEELS, EXTERIOR UPGRADE PACKAGE AND GENUINE FORD ACCESSORIES

STREET SAVVY

Ford E-Series has been the best-selling van for 26 years in a row. All the while, it's been meeting the tough demands of small businesses and commercial fleets alike. It provides the flexibility to adapt to the needs of your trade, the capability to get the job done, and the durability to be there for the long run. It's also the van that offers you a seemingly endless number of choices. You've got a choice of gas or diesel engines, sliding or swing-out doors, all-around windows or panel sides, trade-specific upfitter packages, and several No-Charge Racks and Bins Packages. Whether you go with the E-150, E-250 or E-350 (standard length or extended), you've got a vehicle and the equipment that'll work overtime to get the job done.



VERSATILE TOOL

7

TAKE THIS JOB & SHELVES IT

To help you get organized, several **NO-CHARGE STORAGE OPTIONS** are available. **UPGRADE PACKAGES** meet the specific demands of Electrical Contractor/Appliance Repair and Plumbing/HVAC Service. Numerous other specialized packages are available. Choose from our traditional **RACKS AND BINS**, **ECONOCARGO® UPGRADE**, or our **QUIETFLEX™ RACKS AND BINS**, which reduces noise and weight and allows for increased storage.



DIAL E FOR EMERGENCY

For the past 10 years, **96% OF ALL CUTAWAY EMERGENCY VEHICLES** have been built on a **FORD E-SERIES CHASSIS**. You can depend on it to perform in the clutch. Just combine an aftermarket **EMERGENCY MEDICAL RESPONSE BODY** with the available **AMBULANCE PREP PACKAGE** (which includes a 4.10:1 limited-slip axle ratio, **DUAL ALTERNATORS**, and a 4600-lb. front GAWR), the Auxiliary Heater/Air Conditioning Connector Package and more. In an emergency situation, E-Series is one cool performer.

AMBULANCE UPFIT



YOUR TOUGHEST TOOLBOX

VAN

With up to 5 tons of towing capacity and **STANDARD V8 POWER**, plus several storage and upfitter options, E-Series Vans can tackle your toughest assignments. Here are a few of the packages available:

- Crew Van Interior Upgrade Package
- Exterior Upgrade Package
- **NO-CHARGE ECONOCARGO® SYSTEM**
- **NO-CHARGE RACKS AND BINS PACKAGE**
- **NO-CHARGE QUIETFLEX™**

Racks and Bins Package

- Trailer Tow Package
- Window and door choices

Visit FORDACCESSORIES.COM for other available van equipment.

MAGIC BUS

The Ford E-Series **CUTAWAY CHASSIS** is the one you can count on to move people. Whether it's taking school children on a field trip or transporting travelers to the airport, E-Series gets the job done. **SHUTTLE BUS** and **SCHOOL BUS PREP PACKAGES** are available on E-350 and E-450 Super Duty Cutaway models.

SCHOOL BUS UPFIT



DEPENDABLE DELIVERIES

PICKUP AND DELIVERY UPFIT

Here's the **CUTAWAY MOVING VAN PLATFORM** you can count on. Whether you're delivering furniture, building supplies or other bulky items, the E-Series Cutaway has the frame space to handle it all. Since it's **BUILT FORD TOUGH**, it's the van you can put your trust in.

MAX. GVWRs:

E-350 Super Duty Models = 9600 lbs.–11,500 lbs.
E-450 Super Duty Models = 14,050 lbs.

TONS OF WAYS TO GO

What is it that makes E-Series such a popular work vehicle? Perhaps it's because E-Series is adaptable enough to tackle just about any task at hand – from demanding emergency duty to a multitude of trades, to getting children to school every morning. This versatile vehicle is available as an E-150, E-250 or E-350 Van, and as an E-350 or E-450 Cutaway or Stripped Chassis. Your choices also include up to 4 different engines, several wagon

seating configurations, numerous industry-specific storage options and trade upfits. No wonder E-Series has been the sales champ for 26 years running. It has remained on top by constantly improving with the times to meet your demands. This year's refinements include steel valve stems on dual rear-wheel models and an available 140-amp alternator. With all the different variations E-Series comes in, who wouldn't conclude the "E" stands for Everything?

VOCATIONAL PLATFORM

9

CONVERSIONS CENTRAL

START YOUR CONVERSION WITH FORD E-SERIES.

If you're looking for total luxury or just a bit of customization, E-Series is the way to go. For a list of luxury van converters online, go to www.fordvehicles.com/trucks/eseries/conversionvan/ or see your Ford Dealer for more complete information on vehicles available from Ford-Authorized Van Converters.



RV CONVERSION WAGON

WWW.COMMTRUCK.FORD.COM

5.4L TRITON V8

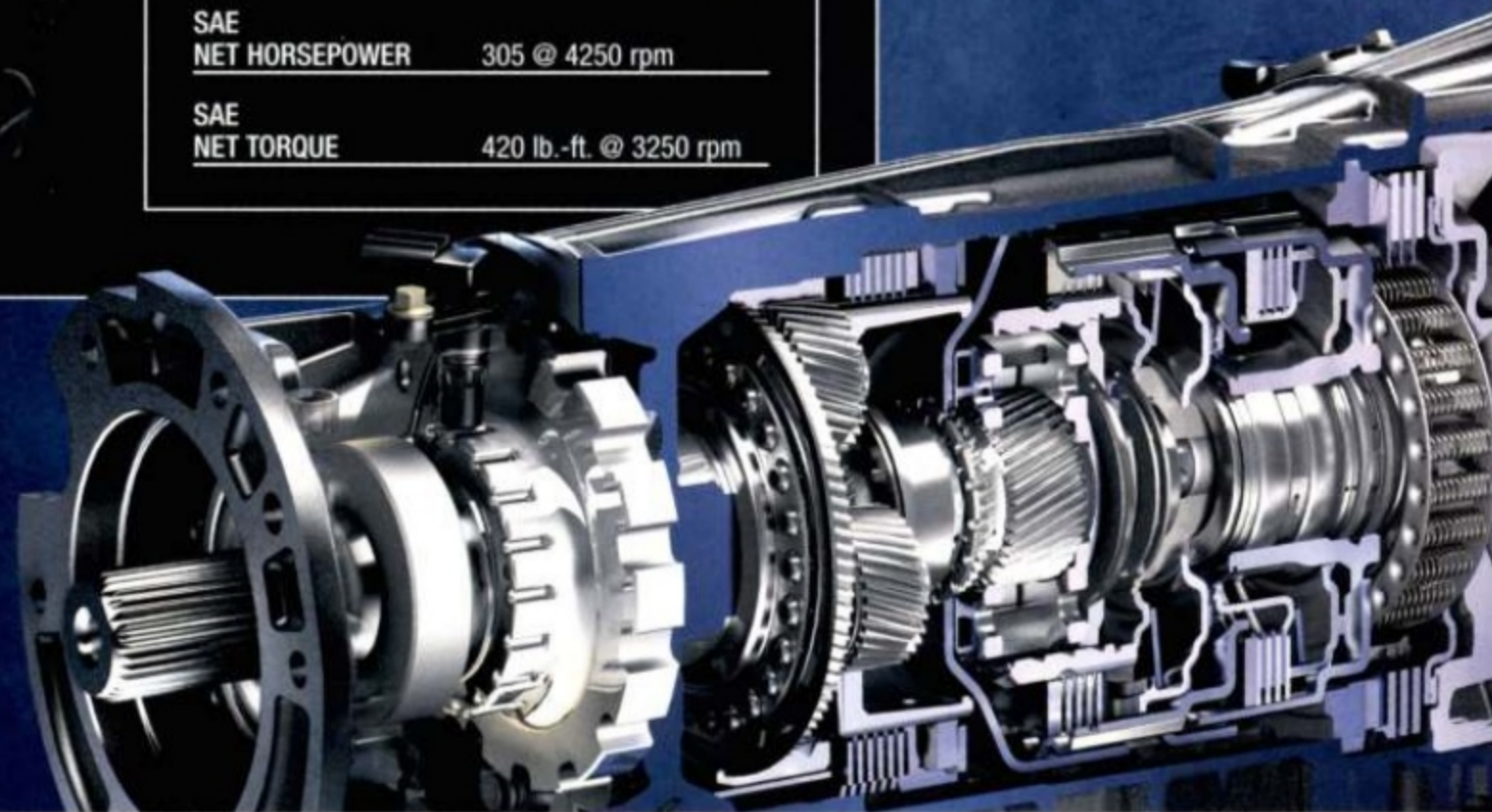


ENGINE TYPE	Gas V8
CONFIGURATION	SOHC V8
DISPLACEMENT	5.4 Liters
SAE NET HORSEPOWER	255 @ 4500 rpm
SAE NET TORQUE	350 lb.-ft. @ 2500 rpm

6.8L TRITON V10

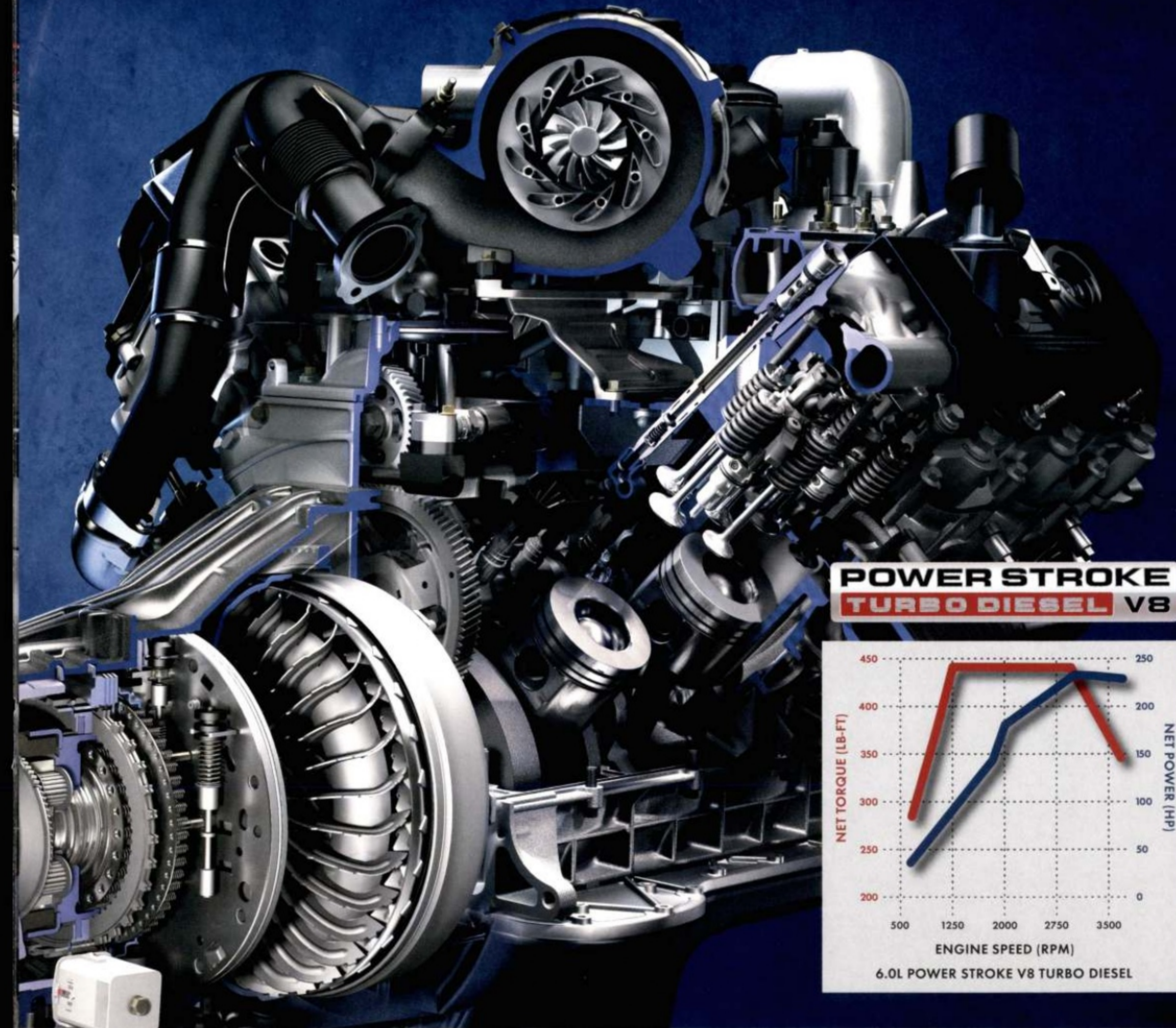


ENGINE TYPE	Gas V10
CONFIGURATION	SOHC V10
DISPLACEMENT	6.8 Liters
SAE NET HORSEPOWER	305 @ 4250 rpm
SAE NET TORQUE	420 lb.-ft. @ 3250 rpm

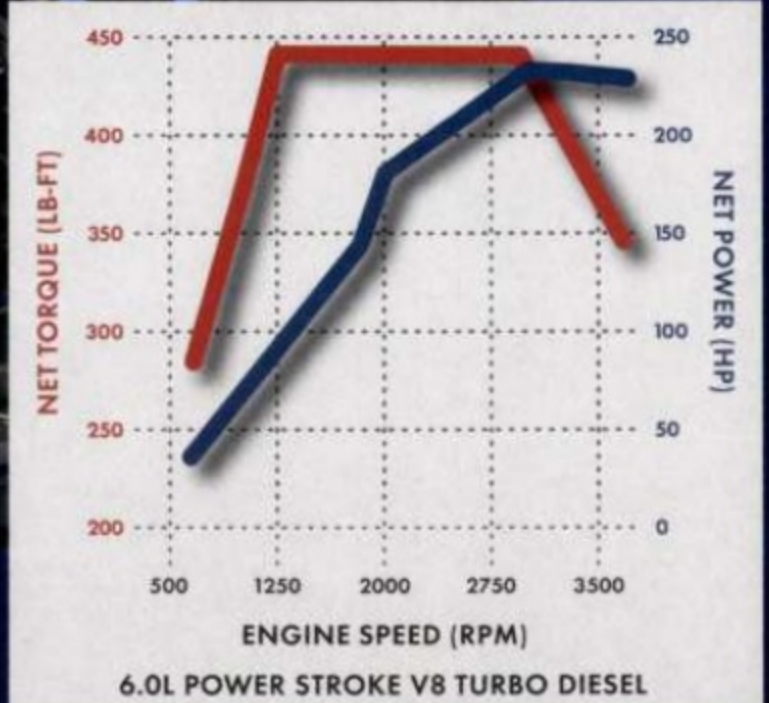


SMOOTH OPERATOR

The available **5-SPEED AUTOMATIC TORQSHIFT TRANSMISSION** is Built Ford Tough and is designed for the high torque outputs of the **POWER STROKE** and **TRITON ENGINES**. On gas engines, the TorqShift 5-speed automatic transmission includes a convenient **TOW/HAUL MODE** that helps eliminate extra shifting on steep grades and when towing.



POWER STROKE TURBO DIESEL V8



NO GUTS, NO GLORY

POWERFUL PERFORMER

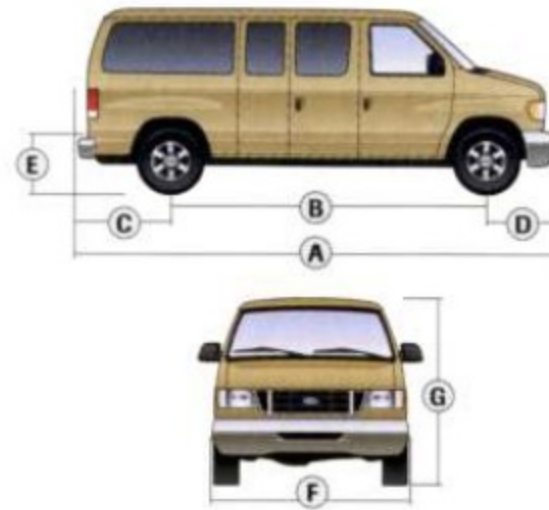
11

When it comes to engines, Ford E-Series has plenty of bragging rights. There is an available V8 diesel – the brawny 6.0L Power Stroke® V8 Turbo Diesel with Electronic Variable Response Turbocharger (EVRT™). This engine has proven itself time and time again with more than enough torque (440 lb.-ft. @ 2000 rpm) and horsepower (235 @ 3300 rpm). You can opt for the available class-leading 6.8L Triton® V10 engine with best-in-class gas horsepower and torque, and TorqShift™ transmission with Tow/Haul Mode, for a GVWR of up to 14,050 lbs. and towing capacities of up to 5 tons with optimized shifting on inclines. For power when you need it, E-Series is one gutsy vehicle.

*Full-size Van class.

SPECIFICATIONS

DIMENSIONS



EXTERIOR	E-150 REGULAR LENGTH	E-250/E-350 SUPER DUTY REG. LENGTH	E-250/E-350 SUPER DUTY EXT. LENGTH
A. Overall length	212.0"	212.0"	232.0"
B. Wheelbase	138.0"	138.0"	138.0"
C. Overhang - rear	43.9"	43.9"	64.0"
D. Overhang - front	30.0"	30.0"	30.0"
E. Load floor height	28.3"	27.4" (Van) 30.7" (Wagon)	30.8" (Van) 32.1" (Wagon)
F. Overall width	79.3"	79.3"	79.3"
G. Height	81.2"	83.7" (Van) 83.4" (Wagon)	84.6"
Side cargo door opening height	47.2"	48.2" (Van) 47.2" (Wagon)	48.1" (Van) 47.2" (Wagon)
Swing-out side cargo door opening width	47.1"	47.1"	47.1"
Sliding side cargo door opening width	39.6"	39.6"	39.6"
INTERIOR			
1st Row			
Head room	42.1"	43.8" (Van) 42.1" (Wagon)	42.1"
Shoulder room	68.1"	68.1"	68.1"
Hip room	65.5"	65.5"	65.5"
Leg room	40.0"	40.0"	40.0"
2nd Row			
Head room	40.7"	40.7"	40.7"
Shoulder room	71.7"	71.7"	71.7"
Hip room	66.5"	66.5"	66.5"
Leg room	35.5"	35.5"	35.5"
3rd Row			
Head room	40.1"	40.1"	40.1"
Shoulder room	71.6"	71.6"	71.6"
Hip room	66.8"	66.8"	66.8"
Leg room	41.1"	41.1"	41.1"
4th Row			
Head room	—	39.0"	40.2"
Shoulder room	—	69.4"	69.4"
Hip room	—	66.1"	66.1"
Leg room	—	40.6"	40.6"
5th Row			
Head room	—	—	37.4"
Shoulder room	—	—	67.5"
Hip room	—	—	65.8"
Leg room	—	—	38.0"
Van Only			
Maximum cargo volume (cu. ft.)	236.5	236.5	275.1

ENGINES

	4.6L SOHC TRITON® V8	5.4L SOHC TRITON V8	6.8L SOHC TRITON V10	6.0L POWER STROKE® V8 TURBO DIESEL
Horsepower (hp @ rpm)	225 @ 4800	255 @ 4500	305 @ 4250	235 @ 3300
Torque (lb.-ft. @ rpm)	286 @ 3500	350 @ 2500	420 @ 3250	440 @ 2000

MAXIMUM LOADED TRAILER WEIGHT* (LBS.)

AUTOMATIC TRANSMISSION							
WAGON							
Engine	Axle Ratio	GCWR (lbs.)	E-150	E-350 SUPER DUTY	E-350 SUPER DUTY EXTENDED		
4.6L SOHC V8	3.55	11,500	6100	—	—		
5.4L SOHC V8	3.55	12,000	6500	—	—		
	3.73	13,000	—	7000	6700		
6.8L SOHC V10	3.73	15,000	—	8800	—		
	4.10	18,500	—	10,000	—		
6.0L V8 Diesel	3.55	16,000	—	9300	—		
	4.10	20,000	—	10,000	—		
VAN							
Engine	Axle Ratio	GCWR (lbs.)	E-150	E-250	E-250 EXTENDED	E-350 SUPER DUTY	E-350 SUPER DUTY EXTENDED
4.6L SOHC V8	3.55	11,500	6500	—	—	—	—
	3.73	11,500	—	6100	6000	—	—
	4.10	12,000	—	6600	6400	—	—
5.4L SOHC V8	3.55	12,000	6900	—	—	—	—
	3.73	13,000	—	7500	7300	7300	7200
	4.10	13,000	—	—	—	7300	7200
6.8L SOHC V10	3.73	15,000	—	—	—	9200	9000
	4.10	18,500	—	—	—	10,000	10,000
6.0L V8 Diesel	3.55	16,000	—	—	—	9700	9500
	4.10	20,000	—	—	—	10,000	10,000

*Maximum capabilities shown are for properly equipped vehicles with required equipment and a 150-lb. driver. Weight of additional options, equipment, passengers and cargo must be deducted from this weight. For additional information, see your Ford Dealer.

For maximum trailer weights with Crew Van, deduct 200 lbs. from the weights above (except with 18,500 lbs. and 20,000 lbs. GCWR).

E-SERIES WAGON FEATURES & OPTIONS

	E-150 XL	E-150 XLT	E-150 CHATEAU	E-350 SUPER DUTY XL	E-350 SUPER DUTY XLT	E-350 SUPER DUTY CHATEAU	E-350 SUPER DUTY EXTENDED XL	E-350 SUPER DUTY EXTENDED XLT
MECHANICAL								
4.6L Triton V8 (4-speed automatic overdrive transmission)	●	●	●	●	●	●	●	●
5.4L Triton V8 (4-speed automatic overdrive transmission)	○	○	○	○	○	○	○	○
6.8L Triton V10 (5-speed TorqShift™ automatic transmission with Tow/Haul Mode)	—	—	—	—	—	—	—	—
6.0L Power Stroke V8 Turbo Diesel (5-speed TorqShift automatic transmission)	—	—	—	—	—	—	—	—
AdvanceTrac® with Roll Stability Control (RSC) (requires 5.4L engine)	—	—	—	—	●	●	—	—
Alternator - Dual-system 140/120 (6.0L Turbo Diesel engine only)	—	—	—	—	○	○	—	—
Alternator - 140-amp (6.0L Turbo Diesel engine only)	—	—	—	—	○	○	—	—
Engine block heater	○	○	○	○	○	○	○	○
Heavy-duty auxiliary battery (n/a with 6.0L engine)	○	○	○	○	○	○	○	○
Trailer Tow Package - Class II/III/IV	—	○	○	○	○	○	○	○
SAFETY/SECURITY								
Airbags** - Driver and front-passenger	●	●	●	●	●	●	●	●
Belt-Minder® safety belt reminder	●	●	●	●	●	●	●	●
Power 4-wheel disc Anti-lock Brake System (ABS)	●	●	●	●	●	●	●	●
Remote keyless-entry system/panic alarm/illuminated entry	○	○	○	○	○	○	○	○
SEATING								
7 passengers: (2) front captain's chairs; (2) 2nd-row captain's chairs; (1) 3-passenger rear bench seat	—	—	●	—	—	—	—	—
8 passengers: (2) front bucket seats; (2) 3-passenger rear bench seats	●	—	○	—	—	—	—	—
8 passengers: (2) front captain's chairs; (2) 3-passenger rear bench seats	—	●	—	○	—	—	—	—
12 passengers: (2) front bucket seats; (2) 3-passenger rear bench seats; (1) 4-passenger rear bench seat	—	—	—	—	●	—	—	—
12 passengers: (2) front captain's chairs; (2) 3-passenger rear bench seats; (1) 4-passenger rear bench seat	—	—	—	—	○	—	—	—
15 passengers: (2) front bucket seats; (3) 3-passenger rear bench seats; (1) 4-passenger rear bench seat	—	—	—	—	—	●	—	—
15 passengers: (2) front captain's chairs; (3) 3-passenger rear bench seats; (1) 4-passenger rear bench seat	—	—	—	—	—	○	—	—
Power driver's seat - 6-way with manual lumbar	—	○	○	—	○	—	○	○
Vinyl seating	●	—	—	●	—	●	—	—
Cloth seating	—	—	—	—	●	—	—	—
Leather-trimmed captain's chairs: (2) front; (2) 2nd-row	—	—	○	—	○	—	—	—
11-passenger Center Aisle Seating Prep Package†	—	—	—	○	—	—	—	—
14-passenger Center Aisle Seating Prep Package†	—	—	—	—	—	○	—	—
APPEARANCE/COMFORT/CONVENIENCE								
Air conditioning (front only)	●	●	●	●	●	●	●	●
Air conditioning - High-capacity (front and rear)	○	○	○	○	○	○	○	○
AM/FM stereo with digital clock and 4 speakers	●	—	—	○	—	●	—	—
AM/FM stereo/single-CD player with digital clock and 6 speakers	○	●	●	○	●	○	●	○
Premium Plus CD-6 - AM/FM stereo/6-disc in-dash CD changer with digital clock	—	○	○	—	○	—	○	—
Floor covering - Full-length vinyl	—	○	—	○	—	○	—	○
Floor covering - Full-length carpet	●	●	●	●	●	●	●	●
Floor mats - Carpeted	●	●	●	●	●	●	●	●
Mirrors - Manual sideview	●	—	—	●	—	●	—	—
Mirrors - Power sideview	—	●	●	—	●	—	●	—
Mirrors - Telescopic trailer tow, sideview	—	○	○	—	○	—	○	—
Overhead console	○	○	○	○	○	○	○	○
Power windows and door locks	●	●	●	●	●	●	●	●
Privacy glass	○	○	○	○	○	○	○	○
Rear step bumper - Chrome (requires Exterior Upgrade Package on XL)	○	○	○	○	○	○	○	○
Rear step bumper - Medium Platinum (n/a with Exterior Upgrade Package)	○	—	—	○	—	○	—	—
Running boards	○	○	○	○	○	○	○	○
Side cargo door - Sliding	○	○	○	○	○	○	○	○
Slim-line engine cover console	●	●	●	●	●	●	●	●
Deluxe engine cover console with storage and 4 cupholders	○	○	○	○	○	○	○	○
Speed control	○	○	○	○	○	○	○	○
Tilt steering wheel	●	●	●	●	●	●	●	●
Visors - Dual-illuminated	—	●	●	—	●	—	●	—

● Standard ○ Select Availability ○ Optional — Not Available

**Always wear your safety belt and secure children in the rear seat. †Seating system upfit available at additional charge.

Comparisons based on 2005 competitive models, publicly available information and Ford certification data at time of printing. Some features discussed may be optional. Vehicles shown may contain optional equipment. Features shown may be offered only in combination with other options or subject to additional ordering requirements or limitations. Following publication of the catalog, certain changes in standard equipment, options and the like, or product delays may have occurred which would not be included in these pages. Your Ford Dealer is the best source for up-to-date information. Ford Division reserves the right to change product specifications at any time without incurring obligations. Body Manufacturers are responsible for compliance certification of the completed vehicle. The Ford New-Vehicle Limited Warranty and any government certification made by Ford shall cover only the vehicle as manufactured by Ford and shall not extend to any addition, modification or change of or to the vehicle by the Ford Authorized Pool Account.

SPECIFICATIONS

E-SERIES VAN FEATURES & OPTIONS

	E-150 COMMERCIAL	E-150 RECREATIONAL	E-250 COMMERCIAL	E-250 RECREATIONAL	E-350 SUPER DUTY COMMERCIAL	E-350 SUPER DUTY RECREATIONAL
MECHANICAL						
4.6L Triton® V8	●	●	●	●	●	●
5.4L Triton V8	○	○	○	○	○	○
6.8L Triton V10	—	—	—	—	○	○
6.0L Power Stroke® V8 Turbo Diesel	●	●	●	●	●	●
Automatic 4-speed overdrive transmission	○	○	○	○	○	○
5-speed automatic TorqShift™ transmission with overdrive and Tow/Haul Mode (requires 6.8L)	—	—	—	—	○	○
5-speed automatic TorqShift transmission with overdrive (requires 6.0L)	—	—	—	—	○	○
Alternator - Dual-system 140/120 (6.0L Turbo Diesel engine only)	○	○	○	○	○	○
Alternator - 140-amp (6.0L Turbo Diesel engine only)	○	○	○	○	○	○
Auxiliary fuel port*	○	○	○	○	○	○
Engine block heater* (included on diesel)	○	○	○	○	○	○
Front GAWR - One-up**	○	○	○	○	○	○
Heavy-duty auxiliary battery (n/a with 6.0L)	○	○	○	○	○	○
SAFETY/SECURITY						
Airbags† - Driver and front-passenger	●	●	●	●	●	●
Belt-Minder® safety belt reminder	●	●	●	●	●	●
Power 4-wheel disc Anti-lock Brake System (ABS)	○	○	○	○	○	○
Remote keyless-entry system/panic alarm/illuminated entry††	○	○	○	○	○	○
SEATING						
Dual bucket seats - Vinyl	○	○	○	○	○	○
Dual bucket seats - Cloth	○	○	○	○	○	○
Dual cloth captain's chairs†	○	○	○	○	○	○
Dual captain's chairs without trim	○	○	○	○	○	○
Power driver's seat (requires captain's chairs)	○	○	○	○	○	○
Seats not included (manual pedestal)	○	○	○	○	○	○
Seats not included (power pedestal)	○	○	○	○	○	○
APPEARANCE/COMFORT/CONVENIENCE						
Air conditioning (front only)	○	○	○	○	○	○
Air conditioning - High-capacity (front and rear)	○	○	○	○	○	○
AM/FM stereo with digital clock and 2 speakers	○	○	○	○	○	○
AM/FM stereo/single-CD player and digital clock††	○	○	○	○	○	○
Premium Plus CD-6 - AM/FM stereo/6-disc in-dash CD changer and digital clock	○	○	○	○	○	○
Radio delete	○	○	○	○	○	○
Radio Prep Package - Includes antenna, 6 speakers and wiring	○	○	○	○	○	○
Deluxe engine cover console	○	○	○	○	○	○
Fixed rear cargo door glass	○	○	○	○	○	○
Fixed side/rear cargo door glass	○	○	○	○	○	○
Floor covering - Front and rear vinyl	○	○	○	○	○	○
Front and rear contour bumpers - Chrome	○	○	○	○	○	○
Light and Convenience Group	○	○	○	○	○	○
Mirrors - Aero-style, manual-adjustable sideview	○	○	○	○	○	○
Mirrors - Aero-style, power-adjustable sideview††	○	○	○	○	○	○
Mirrors - Telescopic trailer tow, sideview†	○	○	○	○	○	○
Power Group (door locks, windows, sideview mirrors, remote keyless-entry system)	○	○	○	○	○	○
Power windows and door locks††	○	○	○	○	○	○
Privacy glass	○	○	○	○	○	○
Rear step bumper - Chrome	○	○	○	○	○	○
Rear step bumper - Medium Platinum	○	○	○	○	○	○
Side cargo door - Sliding	○	○	○	○	○	○
Side cargo door - Swing-out 60% glass/fixed rear cargo door glass	○	○	○	○	○	○
Speed control	○	○	○	○	○	○
Windows - All-around	○	○	○	○	○	○

● Standard ○ Select Availability ○ Optional — Not Available

*Standard on diesel, optional on gas. †Not available with 4.6L or E-150/E-250 Vans. **Computer selected - 4600 lbs. max. ††Always wear your safety belt and secure children in the rear seat. †††Included as part of Power Group on Commercial. ††††Available as part of Interior Upgrade Package. †††††4 speakers on Commercial, 6 speakers on Recreational. ††††††Requires Power Group.

E-SERIES VAN PACKAGES

	E-150 COMMERCIAL	E-150 RECREATIONAL	E-250 COMMERCIAL	E-250 RECREATIONAL	E-350 SUPER DUTY COMMERCIAL	E-350 SUPER DUTY RECREATIONAL
Crew Van Package - 2nd-row vinyl bench seat, metal bulkhead, partial headliner, full B-pillar trim panels, low-series (polypropylene) side door and back door-trim panels, LH lower trim panel behind driver's seat, restraints with metal retractor cover for 2nd-row bench seat, pull handle on 40% side door and RH back door	○	○	○	○	○	○
Crew Van Interior Upgrade Package - 2nd-row cloth bench seat, full-length carpeting, dual cloth captain's chairs, cloth visors, carpeted floor mats, dash sound absorbers, full-length cloth headliner	○	○	○	○	○	○
No-Charge EconoCargo® System - Insulated polyethylene panels covering walls and ceiling, includes bulkhead with lockable door, 2 tracks and tie-down straps	○	○	○	○	○	○
EconoCargo Upgrade Package (General Delivery; requires EconoCargo System) - 2 wire shelving modules (48" H x 16" D x 49" W), 2 single uprights (48"), 1 double upright (48"), 6 wire shelves (16" x 48"), 2 wire shelves (12" x 48")	○	○	○	○	○	○
Exterior Upgrade Package - Front and rear contour chrome bumpers, chromed grille surround, aerodynamic halogen headlamps, 4 full wheel covers with E-150, 4 full sport wheel covers with E-350 Super Duty	○	○	○	○	○	○
Handling Package - Front stabilizer bar, heavy-duty front and rear shock absorbers	○	○	○	○	○	○
Interior Upgrade Package - Full-length carpeting, side/rear cargo door-trim panels, dash sound absorber, full-length headliner, cloth sun visors, full B-pillar trim, cloth captain's chairs, front carpeted floor mats, insulation package†	○	○	○	○	○	○
No-Charge Racks and Bins Package - Fully installed steel shelving, drawers and cabinets; includes bulkhead with lockable door	○	○	○	○	○	○
Premium Van Group - Dual captain's chairs, AM/FM stereo/single-CD player/digital clock, Exterior Upgrade Package, Power Group, speed control, insulation package	○	○	○	○	○	○
No-Charge QuietFlex™ Racks and Bins Package - Enclosed lockable bin, lockable wheel-well door, 2 deep drawers, 4 shallow drawers, 2 triple hooks, full-length vinyl floor covering, 10 shelf dividers, steel bulkhead with lockable door	○	○	○	○	○	○
Racks and Bins Upgrade Package 1 (General Contractor; requires Racks and Bins Package) - Ship-thru ladder rack, ladder rack crossbow	○	○	○	○	○	○
Racks and Bins Upgrade Package 2 (Electrical Contractor/Appliance Repair; requires Racks and Bins Package) - 12-drawer cabinet, tilt shelf, toolbox door (additional), wire spool rack, triple hook (additional), shelf divider set	○	○	○	○	○	○
Racks and Bins Upgrade Package 3 (Plumbing/HVAC Service; requires Racks and Bins Package) - 12-drawer cabinet, tilt shelf, Freon tank rack (3-tank capacity)	○	○	○	○	○	○
RV Plus Package - OWL tires, 4 aluminum wheels (E-150), four 16" full sport wheel covers (E-250), leather-wrapped steering wheel, swing-out side/fixed rear door glass, auxiliary heater/AC connector package with rear controls, AM/FM stereo/single-CD player/digital clock, back door lock switch	○	○	○	○	○	○
Trailer Tow Package - Class II/III/IV - Trailer wiring harness (blade-style female connector), electric brake controller tap-in capability, relay system for backup/B+/running lights, frame-mounted hitch receiver	○	○	○	○	○	○

EconoCargo is a registered trademark of America's Body Company, Inc.

E-SERIES CUTAWAY/STRIPPED CHASSIS FEATURES & OPTIONS

	E-350 SUPER DUTY CUTAWAY	E-450 SUPER DUTY CUTAWAY	E-350 SUPER DUTY STRIPPED CHASSIS	E-450 SUPER DUTY STRIPPED CHASSIS
MECHANICAL				
5.4L Triton V8	○	○	○	○
6.8L Triton V10	○	○	○	○
6.0L Power Stroke V8 Turbo Diesel	○	○	○	○
Electronic 5-speed automatic TorqShift transmission with overdrive and Tow/Haul Mode (gas only)	○	○	○	○
Electronic 5-speed automatic TorqShift transmission with overdrive (6.0L diesel only)	○	○	○	○
Alternator - Dual system 140/120	○	○	○	○
Alternator - 140-amp (6.0L Turbo Diesel engine only)	○	○	○	○
Auxiliary fuel port	○	○	○	○
Electronic Throttle Control (ETC)	○	○	○	○
Engine block heater††	○	○	○	○
Front GAWR - One-up**	○	○	○	○
Fuel tank - 37-gallon capacity	○	○	○	○
Fuel tank - 55-gallon capacity	○	○	○	○
Heavy-duty auxiliary battery (n/a with 6.0L engine)	○	○	○	○
Spare tire and wheel	○	○	○	○
Steering gear - Heavy-duty	○	○	○	○
SAFETY/SECURITY				
Airbags** - Driver and front-passenger	○	○	○	○
Belt-Minder safety belt reminder	○	○	○	○
Power 4-wheel disc Anti-lock Brake System (ABS)	○	○	○	○
Remote keyless-entry system	○	○	○	○
SEATING				
Dual vinyl bucket seats	○	○	○	○
Dual cloth bucket seats	○	○	○	○
Dual captain's chairs	○	○	○	○
Dual captain's chairs without trim	○	○	○	○
6-way power driver's seat (dual captain's chairs)	○	○	○	○
Manual Seat Prep Package	○	○	○	○
Power Seat Prep Package	○	○	○	○
Seats not included (no pedestal)	○	○	○	○
APPEARANCE/COMFORT/CONVENIENCE				
Air conditioning - Front	○	○	○	○
Air conditioning delete	○	○	○	○
AM/FM stereo with digital clock	○	○	○	○
Premium Plus CD-6 - AM/FM stereo/6-disc in-dash CD changer and digital clock	○	○	○	○
Premium AM/FM stereo/single-CD player and digital clock	○	○	○	○
Radio Delete Package	○	○	○	○
Radio Prep Package	○	○	○	○
Frame spacers - Alternate lateral	○	○	○	○
Frame spacers - Standard pattern	○	○	○	○
Front bumper - Black painted	○	○	○	○
Front bumper - White painted	○	○	○	○
Mirrors - Aero-style, power-adjustable sideview	○	○	○	○
Mirrors - Telescopic trailer tow, manual-adjustable sideview	○	○	○	○
Mirrors - Telescopic trailer tow, power-adjustable sideview†	○	○	○	○
Modified vehicle wiring kit and system	○	○	○	○
Pucks - Frame isolator	○	○	○	○
Right-hand door (not included)	○	○	○	○
Slim-line engine cover console	○	○	○	○
Deluxe engine cover console	○	○	○	○
Speed control	○	○	○	○
Tilt steering wheel	○	○	○	○
Windshield wipers - Interval (controls only, no wiper motor on Stripped Chassis)	○	○	○	○

†Standard on diesel, optional on gas. *Requires Power Equipment Group.

E-SERIES CUTAWAY/STRIPPED CHASSIS PACKAGES

	E-350 SUPER DUTY CUTAWAY	E-450 SUPER DUTY CUTAWAY	E-350 SUPER DUTY STRIPPED CHASSIS	E-450 SUPER DUTY STRIPPED CHASSIS
AC Prep Package - Scroll compressor, condenser, drive belt, tensioner attaching brackets and bolts	○	○	○	○
Ambulance Prep Package - Auxiliary Heater/AC Connector Package, 4.10:1 limited-slip axle (E-350), dual alternators, 4600-lb. front GAWR, front license plate bracket, manual telescopic trailer tow mirrors, spare tire and wheel, frame pucks, dual-note horn (requires 6.0L diesel engine)	○	○	○	○
Ambulance Prep Package, Not Required	○	○	○	○
Auxiliary Heater/Air Conditioning Connector Package - Front heater connector, front air conditioning connector	○	○	○	○
Auxiliary Heater/Air Conditioning Connector Package w/Rear Controls	○	○	○	○
Class I Trailer Tow Prep Package	○	○	○	○
Exterior Upgrade Package - Front chrome bumper and grille, aerodynamic headlamps	○	○	○	○
Handling Package - Front stabilizer bar, heavy-duty front and rear shock absorbers	○	○	○	○
Insulation Package - Front acoustical headliner, cloth visors	○	○	○	○
Interior Upgrade Package - Front cloth headliner, high-series door-trim panels, dual cloth captain's chairs, cloth visors, carpet, power windows/door locks, Insulation Package	○	○	○	○
Motorhome Prep Package - Front chrome bumper and grille, aerodynamic halogen headlamps, power windows/door locks, manual pedestals (seats not included), Class I Trailer Tow Prep Package, speed control, 4600-lb. front GAWR (E-450), frame pucks, telescoping antenna, front license plate bracket, 55-gallon fuel tank (37-gallon with E-350 Super Duty with 138" WB)	○	○	○	○
School Bus Prep Package - Front license plate bracket, banded front door glass (tinted), high-back driver's seat only, frame pucks, Deletes - RH seat, RH seat pedestal and attaching hardware, RH safety belt system, RH B-pillar trim and scuff plate, and passenger-side front airbag	○	○	○	○
Shuttle Bus Prep Package - Front chrome bumper and grille, aerodynamic halogen headlamps, manual pedestals (seats not included), 4600-lb. front GAWR (E-450), frame pucks, power windows/door locks, front license plate bracket, driver and front-passenger airbags, Deletes - Front headliner and front dome lamp	○	○	○	○

SPECIFICATIONS

BUSINESS PREFERRED NETWORK

Each of the select dealerships in our Business Preferred Network (BPN) is committed to providing quality commercial-oriented products, as well as special financing and billing arrangements, to businesses that rely on Ford products. As a BPN customer, your business vehicles receive priority service at your BPN dealership, to help get your vehicle back on the road quickly.



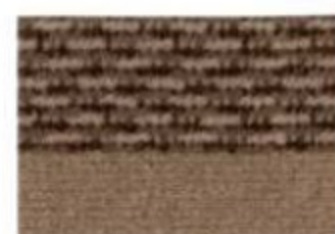
Business Preferred Network
SALES SERVICE FINANCE

FINANCIAL SERVICES

Our commercial purchase plans offer attractive rates, negotiable terms and business-friendly options, while CommercialLease and CommercialLeasePlus® offer a variety of package options to meet your leasing needs. Contact us at 1-877-234-FMCC (3622) or visit our Web site at fordcredit.com.



INTERIOR COLORS



Medium Pebble Cloth



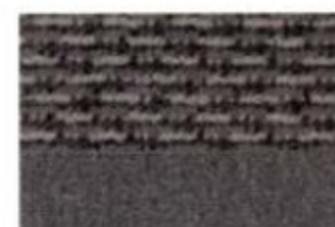
Medium Pebble Leather



Medium Flint Vinyl



Medium Flint Cloth



Medium Flint Cloth



Medium Flint Leather

MEDIUM PEBBLE

MEDIUM FLINT

XL/XLT WAGON

- Oxford White
- Gold Ash Metallic*
- Yellow (XL only)
- Dark Toreador Red Metallic
- Light Tundra Metallic (XLT only)
- True Blue Metallic
- Silver Metallic
- Dark Shadow Grey Metallic (XLT only)

CHATEAU WAGON

- Oxford White/Silver Metallic Two-Tone
- Oxford White/Dark Shadow Grey Metallic Two-Tone
- Gold Ash Metallic/Dark Shadow Grey Metallic Two-Tone
- Dark Toreador Red Metallic/Silver Metallic Two-Tone
- Dark Toreador Red Metallic/Dark Shadow Grey Metallic Two-Tone
- Light Tundra Metallic/Dark Shadow Grey Metallic Two-Tone
- True Blue Metallic/Silver Metallic Two-Tone
- Black/Silver Metallic Two-Tone
- Black/Dark Shadow Grey Metallic Two-Tone

VAN

- Oxford White
- Gold Ash Metallic**
- Yellow (Commercial Van only)
- Dark Toreador Red Metallic
- Light Tundra Metallic
- True Blue Metallic*
- Silver Metallic
- Dark Shadow Grey Metallic
- Black

CUTAWAY

- Oxford White
- Yellow
- Dark Toreador Red Metallic
- True Blue Metallic
- Silver Metallic
- Black

*Medium Pebble available on XLT only. Medium Flint available on XL only.

**Available with Interior Upgrade Package only.

*Medium Pebble available on Recreational Van only.

NOTE: Fabrics shown are representative of seat color only. Material and sew patterns are subject to change.

EXTERIOR COLORS



Oxford White



Gold Ash Metallic



Yellow



Dark Toreador Red Metallic



Light Tundra Metallic



True Blue Metallic



Silver Metallic



Dark Shadow Grey Metallic



Black

Ford uses clearcoat paint for beauty and protection. Colors shown are representative only. Not all colors are available on all models. See your dealer for actual paint/trim options. Vehicles shown may contain optional equipment.

WHEELS & TIRES

WHEELS	E-150 WAGON			E-350 SUPER DUTY WAGON			E-350 SUPER DUTY EXTENDED WAGON		E-150 VAN COMM. REC.		E-250 VAN COMM. REC.		E-350 SUPER DUTY VAN COMM. REC.		CUTAWAY E-350 SUPER DUTY		E-450 SUPER DUTY		STRIPPED CHASSIS E-350 SUPER DUTY		E-450 SUPER DUTY	
	XL	XLT	CHATEAU	XL	XLT	CHATEAU	XL	XLT	COMM.	REC.	COMM.	REC.	COMM.	REC.	COMM.	REC.	COMM.	REC.	COMM.	REC.	COMM.	REC.
16" Argent Styled-Steel	●	●	—	●	●	●	●	●	●	●	●	●	●	●	●	●	●	●	●	●	●	●
16" Bright Aluminum	○	○	●	—	—	—	—	—	○	○	—	—	—	—	—	—	—	—	—	—	—	—
16" Forged-Aluminum	—	—	—	○	○	○	○	○	—	—	○	○	○	○	○	○	○	○	○	○	○	○
16" Full Wheel Covers††	○	●	—	—	—	—	—	—	○	●	—	—	—	—	—	—	—	—	—	—	—	—
16" Full Sport Wheel Covers†	—	—	—	○	●	●	○	●	—	—	○	○	○	○	○	○	○	○	○	○	○	○
16" Steel	—	—	—	—	—	—	—	—	—	—	—	—	—	—	—	—	—	—	—	—	—	—
16" Painted-Steel	—	—	—	—	—	—	—	—	—	—	—	—	—	—	—	—	—	—	—	—	—	—
TIRES																						
P235/70R16XL BSW All-Season	●	●	●	—	—	—	—	—	●	●	—	—	—	—	—	—	—	—	—	—	—	—
LT225/75R16E BSW All-Season††	—	—	—	●	●	●	—	—	—	—	●	●	—	—	—	—	—	—	—	○	●	●
LT245/75R16E BSW All-Season*	—	—	—	●	●	●	●	●	—	—	●	●	—	—	—	—	—	—	—	●	●	●

*Included with Exterior Upgrade Package on E-150 XL Wagon and E-150 Commercial Van. †Included with Exterior Upgrade Package on E-350 Super Duty XL Wagon, E-350 Super Duty Extended XL Wagon, E-250 Commercial and Recreational Vans, and E-350 Super Duty Commercial and Recreational Vans. ††DRW on E-350 Super Duty Cutaway. *SRW on E-350 Super Duty Cutaway.

WHEELS



16" Argent Styled-Steel Wheel



16" Bright Aluminum Wheel



16" Full Wheel Cover



16" Full Sport Wheel Cover

New-Vehicle Limited Warranty

Under this warranty, you'll receive bumper-to-bumper coverage for 3 years/36,000 miles with no deductible. You'll also receive corrosion perforation coverage for 5 years with unlimited mileage and no deductible. Ask your Ford Dealer for a copy of the warranty.



Get the ride you want. Whether you plan to lease or finance, you'll find the choices that are right for you at Ford Credit. Ask your Ford Dealer for details or check us out at fordcredit.com.



Choose the insurance program that's designed for your vehicle — Ford Motor Company Insurance Services. Our program helps you receive the rates and service you deserve. Call 1-877-367-3847 or visit us at fordvip.com for a no-obligation quote. Insurance offered by American Road Services Company (in CA, American Road Insurance Agency), a licensed agency and subsidiary of Ford Motor Company.



Having a physical disability doesn't mean life can't be rewarding. In fact, for many thousands of Ford Motor Company customers, Ford Mobility Motoring has meant their lives can also be easier and more fulfilling. To request an information kit, learn about the Ford Mobility Motoring Process, and hear what customers say about the freedom and independence that adapted vehicles provide them, visit www.mobilitymotoringprogram.com.



For a purchase or lease, the Ford Extended Service Plan (ESP) gives you "Peace-of-Mind" protection designed to cover key vehicle components and protect you from the cost of unexpected repairs. Ask your dealer for an ESP backed by Ford Motor Company and honored at all Ford dealerships.

2006 FORD E-SERIES

SALES LEADER

26 years in a row

NEW ADVANCETRAC® WITH ROLL STABILITY CONTROL

Standard on Extended-Length Wagons

BEST-IN-CLASS GAS HORSEPOWER AND TORQUE

TOWS UP TO 10,000 LBS.

EMERGENCY RESPONSE VEHICLES

96% share of market

SPECIAL MODELS AND PACKAGES

- Chateau Wagon
- No-Charge Racks and Bins upgrades on Van
- Vocational Packages: Ambulance Prep Package, Motorhome Prep Package, School Bus Prep Package, Shuttle Bus Prep Package

For more information, go to fordvehicles.com

