

THE NEW 2006

EXPLORER





EXPLORER LIMITED IN BLACK WITH AVAILABLE EQUIPMENT

Ford SUVs are Built to Do More. And the new 2006 Explorer leads the lineup with **more power, more strength, more comfort, more interior versatility and more standard safety features** than ever before. America's best-selling SUV for 14 years and counting, Explorer now gives you 292 hp from its available V8 engine, plus a stiffer frame, quieter ride, all-new seating and our new, class-exclusive* Intelligent Safety System.™ True to its original SUV roots, the new Explorer exudes the confident capability you need to feed your adventurous spirit. It is the best Explorer ever.

Empower yourself to reach **spectacular destinations.**



*Truck-based Midsize SUV class.

Built to handle just about anything you can dream up, the new 2006 Explorer is ready for your next adventure. After a long day of activity, you'll be especially thankful for its all-new rear liftgate. It's so light and easy to operate that it can be closed with just one hand. A flip-open rear window makes packing small stuff easy, while the power lock/unlock button in the rear cargo area allows you to secure the vehicle in an instant. Explorer's 7-passenger models now feature a flatter loadfloor than its key competitors.* And with the rear seat folded down, 5-passenger models can handle up to a whopping 85.8 cu. ft. of gear – just imagine the possibilities.



Explorer's **New, Class-Exclusive PowerFold™ 3rd-Row Seat**, available on Eddie Bauer and Limited, features a **50/50 Split and Fold-Flat convenience**. A 50/50 split, manual-fold version is available on XLT, Eddie Bauer and Limited.

Go wherever you want and take **whatever**
you need.

Cargo and load capacity limited by weight and weight distribution.

*As compared to Chevy TrailBlazer, Dodge Durango, Honda Pilot, Nissan Pathfinder and Toyota 4Runner.



EXPLORER XLT IN REDFIRE METALLIC WITH AVAILABLE EQUIPMENT



EXPLORER EDDIE BAUER WITH AVAILABLE EQUIPMENT

New for 2006, the Eddie Bauer Luxury Package pampers you with a choice of 2 stylish interiors in addition to the lengthy list of conveniences. The package includes your choice of leather-trimmed seating, with or without the dynamic, two-tone effect of Preferred Suede® inserts. You and your front passenger will delight in the Dual-zone Electronic Automatic Temperature Controls, while everyone enjoys the Audiophile® Sound System, with its 6-disc in-dash CD changer and MP3 capability. Secondary audio and climate controls mounted on the steering wheel allow you to make adjustments while maintaining control.



Also included in the Eddie Bauer Luxury Package: a new **10-Way Power, Heated Driver's Seat**, with power lumbar and recline adjustments and a memory feature that recalls position settings for 2 drivers; a 6-way power, heated front-passenger's seat with manual lumbar adjustment; and fold-away, power, heated sideview mirrors with security approach lamps and sleek body-color accents.

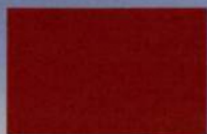
Embark upon life's adventures in **luxurious**
Eddie Bauer
style.



Oxford White



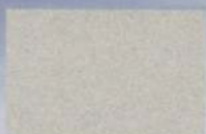
Pueblo Gold Metallic



Redfire Metallic



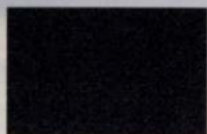
Dark Blue Pearl Metallic



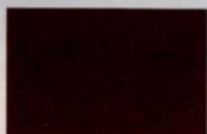
Silver Birch Metallic



Mineral Grey Metallic



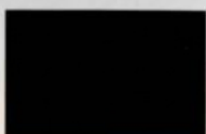
Dark Stone Metallic



Dark Cherry Metallic



Cashmere Tri-Coat Metallic



Black

Ford uses clearcoat paint for beauty and protection. Colors shown are representative only. Not all colors are available on all models. See your dealer for actual paint/trim options. Comparisons based on 2005 competitive models, publicly available information and Ford certification data at time of printing. Some features discussed may be optional. Vehicles shown may contain optional equipment. Features shown may be offered only in combination with other options or subject to additional ordering requirements or limitations. Following publication of this brochure, certain changes in standard equipment, options and the like, or product delays may have occurred which would not be included in these pages. Your Ford Dealer is the best source for up-to-date information. Ford Division reserves the right to change product specifications at any time without incurring obligations. Audiophile is a registered trademark of Audiophile, Inc. Preferred Suede is a registered trademark of Milliken & Company.



16" Styled-Steel Wheel
Standard on XLS



16" Machined-Aluminum Wheel
Optional on XLS Sport Package;
Standard on XLT



17" Machined-Aluminum Wheel
Optional on XLT



17" Painted-Aluminum Wheel
Standard on Eddie Bauer



17" Chromed Wheel
Standard on Limited



18" Chromed Wheel
Optional on Eddie Bauer
and Limited



Each series includes the standard equipment of the previous series, except where additions/exceptions are noted.

Explorer XLS

16" styled-steel wheels • P235/70R16 all-season BSW tires • Onyx grey grille, bumpers and bodyside moldings • Black door handles • Black roof side rails • Power sideview mirrors • AM/FM stereo/single-CD player with MP3 capability • Cloth front bucket seats with 2-way adjustable head restraints and driver's manual lumbar • 60/40 split-folding 2nd-row bench • Floor console with floor shifter • 2-line message center with outside temperature display and compass • Power windows with one-touch-down driver's-side feature • Visor vanity mirrors • Air conditioning • AdvanceTrac[®] with RSC[®] • Front-seat side airbags • Intelligent Safety System[™] • Control Trac[®] 4-wheel-drive system (4x4 models only)

Explorer XLT

16" machined-aluminum wheels • P235/70R16 all-season BSW tires (4x2) or OWL tires (4x4) • Onyx grey bodyside cladding and wheel-lip moldings • 4-bar chromed grille • Fog lamps • Power sideview mirrors with security approach lamps • Premium cloth front bucket seats with 2-way adjustable head restraints and 6-way power driver's seat with manual lumbar • Overhead console • 2nd-row dome/map lights • Leather-wrapped steering wheel • Front and rear floor mats • Illuminated visor vanity mirrors

Explorer Eddie Bauer

17" painted-aluminum wheels • P245/65R17 all-terrain OWL tires • Pueblo Gold lower front bumper, rear bumper and wheel-lip moldings • Body-color door handles, sideview mirror accents and bodyside moldings • 3-bar chromed grille with nostrils • Pueblo Gold running boards • Silver roof side rails with black end caps • Automatic headlamps • Keyless-entry keypad • Leather-trimmed front bucket seats with 10-way power driver's seat, including power lumbar and recline • Woodgrain accents • 4-line message center • Auto-dimming rearview mirror

Explorer Limited

17" chromed wheels • Body-color bumpers and wheel-lip moldings • 4-bar chromed grille • Power, heated sideview mirrors with security approach lamps and chromed accents • Body-color running boards • Audiophile[®] AM/FM stereo/6-disc in-dash CD changer with MP3 capability, subwoofer and 290 watts • Leather-trimmed, heated front bucket seats with 10-way power driver's seat, including power lumbar and recline; 6-way power passenger's seat • Unique woodgrain inserts • Center floor console with unique appearance for center finish and wrapped armrest • Secondary steering wheel-mounted audio and climate controls • Dual-zone Electronic Automatic Temperature Controls



BUILT FOR THE ROAD AHEAD.

WWW.FORDVEHICLES.COM

©2005 Ford Motor Company Litho in USA on recycled paper (20% post consumer) 06EXPLRAS