



2008

F-150



J.D. POWER AND ASSOCIATES: "HIGHEST RANKED LIGHT-DUTY FULL-SIZE PICKUP IN INITIAL QUALITY" 2005

## BEST-IN-CLASS

- F-SERIES: BEST-SELLING TRUCKS FOR 28 YEARS
- BEST-IN-CLASS TOWING CAPACITY\*\*
- BEST-IN-CLASS PAYLOAD
- BEST-IN-CLASS CARGO BOX VOLUME
- "BEST PICK FRONTAL" CRASH RATING – INSURANCE INSTITUTE FOR HIGHWAY SAFETY
- BEST-IN-CLASS INTERIOR VOLUME IN REGULAR CAB AND SUPERCAB
- BEST SELECTION OF MODELS, TRIM AND PICKUP BOX CONFIGURATIONS
- ONLY OUTBOARD-MOUNTED REAR SHOCKS

## FIRST-IN-CLASS

- FIRST-AND-ONLY 4-DOOR REGULAR CAB
- FIRST WHEEL-TORQUE-BASED ELECTRONIC THROTTLE CONTROL
- FIRST TAILGATE ASSIST™
- FIRST-AND-ONLY OVERHEAD RAIL MODULAR INTERIOR STORAGE SYSTEM
- FIRST-AND-ONLY SUPERCAB REAR-DOOR POWER WINDOWS
- NATIONAL HIGHWAY TRAFFIC SAFETY ADMINISTRATION 5-STAR FRONTAL CRASH TEST RATING, 2005 DRIVER AND RIGHT-FRONT PASSENGER



# TRUCK SUPREMACY

Ford F-Series trucks have always been seen as icons of hard work, carrying the load for millions of owners every day. Now, the 2005 F-150 has received further recognition as "Highest Ranked Light-Duty Full-Size Pickup in Initial Quality" by J.D. Power and Associates.\* For 2006, F-150 continues the tradition of toughness with a stronger frame than any other 1/2-ton pickup, *plus* best-in-class cargo and towing capabilities.\*\* All that brawn not only makes F-150 a purebred workhorse, it sets high standards for refinement and safety. Its ride, handling and comfort are exceptional. And it's the only full-size pickup to earn the U.S. Government's 5-Star frontal crash test ratings, as well as the Insurance Institute for Highway Safety's "Best Pick Frontal" crash status. Hard-working, smooth-riding and recognized for excellence, F-150 is the flagship of America's best-selling line of trucks. Climb aboard, and discover the qualities that have put F-Series on top for the last 28 years.

\*J.D. Power and Associates 2005 Initial Quality Study™ Study based on a total of 62,251 consumer responses indicating owner-reported problems during the first 90 days of ownership. [www.jdpower.com](http://www.jdpower.com)  
\*\*Based on properly equipped Full-Size pickups under 8500 lbs. GVWR and priced below \$39,000.

2006 FORD F-150

[WWW.FORDVEHICLES.COM](http://WWW.FORDVEHICLES.COM)



## CONTENTS

IMPROVING PERFECTION	3
POWERPLANTS	5
STRUCTURE – SUSPENSION – BRAKES	7
STRENGTH & SAFETY	9
FORD HARLEY-DAVIDSON™ F-150	11
KING RANCH	13
LARIAT	15
FX4	17
XLT	19
STX	21
XL & GENUINE FORD ACCESSORIES	23
SPECIFICATIONS	25

F-150 FX4 REGULAR CAB IN TRUE BLUE METALLIC WITH AVAILABLE EQUIPMENT SHOWN ON A CLOSED COURSE WITH A PROFESSIONAL DRIVER DEMONSTRATING THE OFF-ROAD ABILITIES THAT EXEMPLIFY F-150 TOUGHNESS AND CAPABILITY

#### SPARE BED ROOM

**NEW SuperCrew 6.5' Cargo Box** – Coming in the winter of 2006, this optional configuration adds a full foot of extra length to the SuperCrew box. It has Tailgate Assist™ plus the tie-downs that make an F-150 box convenient and practical. The SuperCrew 6.5' box is available in either a Styleside or a Flareside version. So get yours and pile on the cargo.

#### SHINE IT UP

**NEW Chrome Packages** – Both versions feature 18" chrome-aluminum wheels with outline white-letter tires, 5" chrome tubular step bars and a chrome exhaust tip. XLT Chrome Package includes a color-coordinated leather-wrapped steering wheel, plus a chromed grille surround. Lariat Chrome Package (shown) adds chromed sideview mirror caps, plus chromed door and tailgate handles.

# IMPROVING PERFECTION

How do you make a supremely capable truck even better? Give it more flexibility with a bigger available cargo box. Offer Traction Assist on all 4x2 V8 models. Add factory-installed SIRIUS Satellite Radio as an exciting new option. And turn up the bling with an optional Chrome Package and massive new 20" machined-aluminum wheels. No matter how hard you have to work, or how much you like to play, Ford lets you customize your F-150 with a wide range of options and upgrades to make hard work easier and the good times more fun.



#### TURN OFF THE ADS, TURN UP THE FUN

**NEW SIRIUS Satellite Radio Service** – Over 120 channels of digital-quality programming coast to coast, including 65 channels of commercial-free music and over 55 channels of sports, news, talk and entertainment. This factory-installed option provides superior sound quality and integrates seamlessly with F-150 audio systems. You even get 6 months of complimentary service. Ask your Ford Dealer for details.



3

#### LIVIN' LARGE

**NEW 20" 6-Spoke Machined-Aluminum Wheels** – Now available on FX4, Lariat and King Ranch, these massive beauties give your F-150 a custom look. Plus, the 6-spoke design sets off the 20" outline white-letter all-terrain tires. There's nothing like a new set of "shoes" to set your truck apart from the rest. And F-150 delivers, with style to spare.

F-150 LARIAT SUPERCREW 4X4 IN BLACK SHOWN WITH AVAILABLE EQUIPMENT, NEW LARIAT CHROME PACKAGE AND 6.5' BOX

# F-150

## 5.4 TRITON

### HI-TECH HEADS

**3-Valve Heads with Variable Cam Timing** – Here's the basic science behind this technology: Get more air and fuel in to get more power and torque out. Two intake valves pack a high-density fuel charge into the combustion chamber, while a single large exhaust valve evacuates the burned gases. On the 5.4L 3-Valve Triton® V8, variable cam timing optimizes the entire process for performance and efficiency.

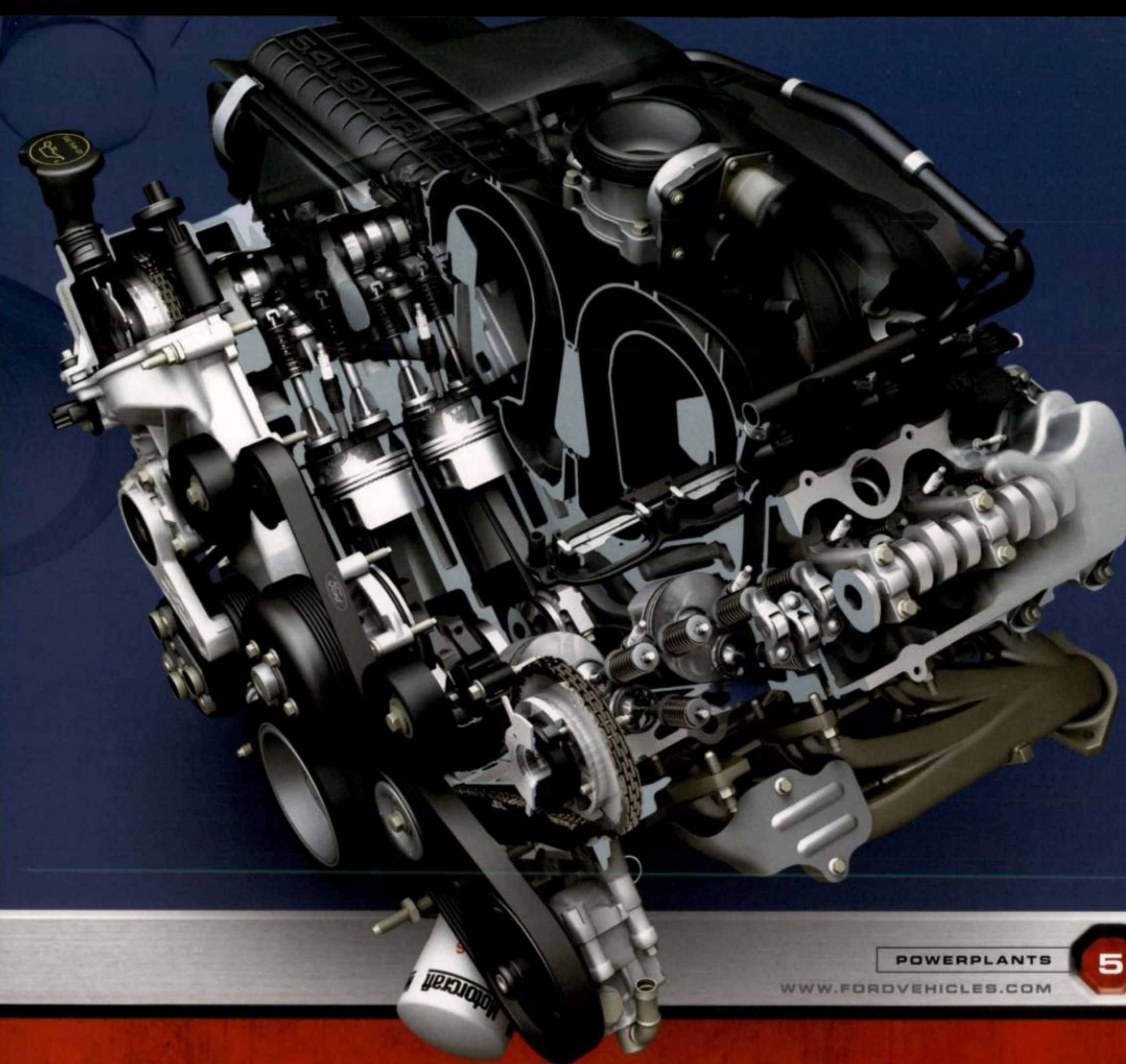
# YOU'VE GOT THE POWER

You want to haul, tow, climb and carry. From V6 to V8, F-150 delivers the power to get the job done with ease. With a properly equipped chassis, the fuel-efficient 4.2L V6 lets you haul up to 1920 lbs. and tow up to 5700 lbs. The muscular 4.6L Triton V8 kicks up those numbers to 1970 lbs. and 7200 lbs. And with 85% of its beefy low-end torque on tap at just 1500 rpm, the mighty 5.4L 3-Valve Triton V8 powers F-150 to best-in-class numbers: 3060 lbs.\* payload and 9900 lbs.\*\* towing. Yet, all this muscle isn't just brute strength. No matter what powertrain meets your needs, you'll have one smooth, quiet ride. Powerful reasons to choose F-150.

### V6 PERFORMANCE

**4.2L V6 Engine** – With 202 hp and 260 lb.-ft. of torque, this V6 delivers smooth, quiet operation; responsive performance and load-handling power. It features a split-port induction (SPI) system that helps optimize fuel efficiency and engine response. Available with a 4-speed automatic or 5-speed manual transmission.

\*Requires Heavy Duty Payload Package. \*\*Maximum loaded trailer weights. Combined weight of towing vehicle (including hitch, passengers and cargo) and loaded trailer must not exceed Gross Combination Weight Rating (GCWR). See RV and Trailer Towing Guide for requirements and restrictions.



POWERPLANTS

5

WWW.FORDVEHICLES.COM

### BIG-TIME TORQUE

**Low-End Muscle** – The available 5.4L 3-Valve Triton V8 uses 3-valve aluminum heads to boost output to 300 hp and 365 lb.-ft. of torque. Variable cam timing keeps the power on across a wide RPM range, so the muscle comes on early to get heavy loads moving, and sticks around for an easy ride to your destination. F-150 is the first full-size pickup to use 3-valve technology to optimize horsepower and low-end torque.

### TURBINE-LIKE RESPONSE

**Electronic Throttle Control (ETC)** – Standard on all F-150 engines, this drive-by-wire technology uses electronic servos instead of a mechanical linkage to control throttle actuation. Sensors monitor accelerator inputs to actively modulate torque at the drive wheels. The result is seamless engine response. This all-electronic system needs no adjustment or maintenance, and ETC optimizes fuel efficiency and minimizes emissions as well. That's as smooth as it gets.



#### PEACE AND QUIET

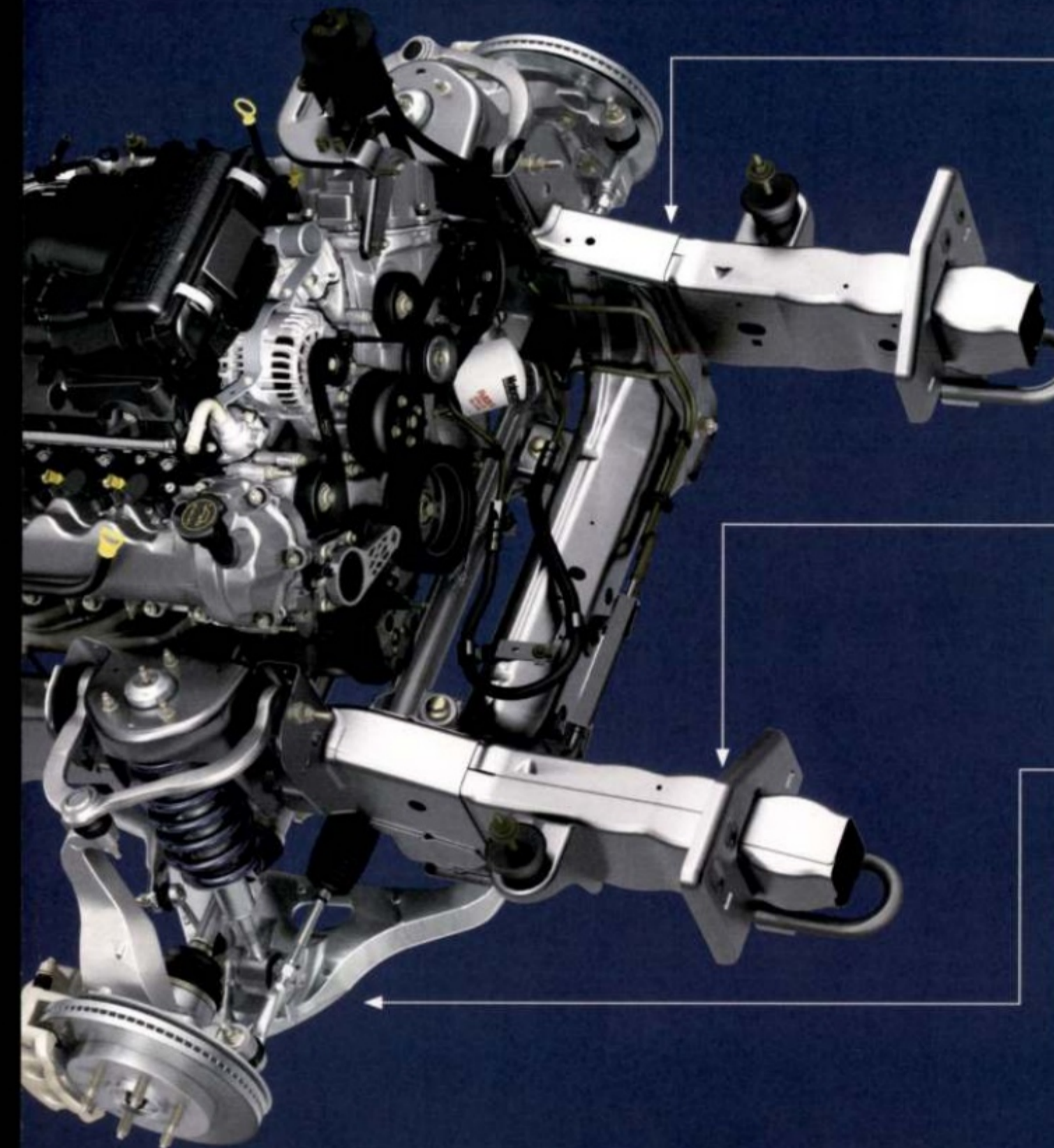
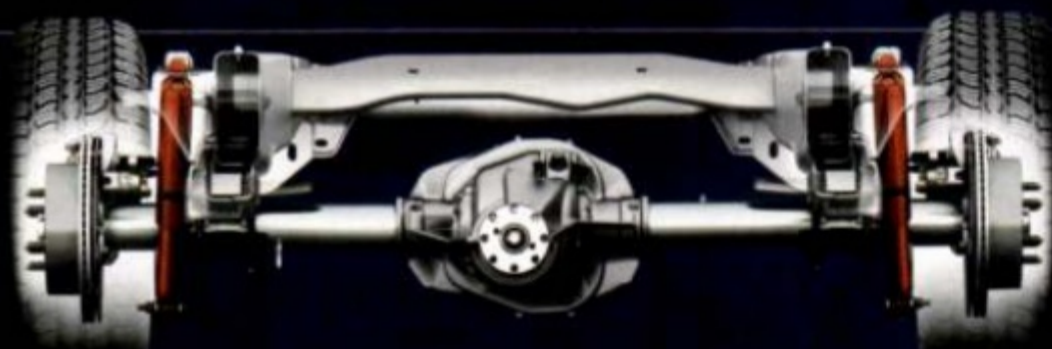
**Body Mounts and Joint Welds** – Special mounts help isolate the cab from road vibration, while through-rail welded crossmembers reduce frame flex. The result? A quiet interior and a smooth ride.

# ULTIMATE BACKBONE

The F-150 is built on the strongest frame available in a full-size pickup under 8500 lbs. GVWR. This fully boxed frame is another reason Ford F-150 boasts the biggest payload and towing numbers in its class. But that's not all. Innovative, class-exclusive cast-aluminum front lower control arms and outboard-mounted rear shocks, plus cab-insulating body mounts combine to deliver a truck that rides and handles like, well, anything but a truck. Toughness and innovation: qualities that F-150 yields in abundance.

#### COMFORT AND COMMAND

**Outboard-Mounted Rear Shocks** – You won't find these on any other pickup in its class. Locating the rear shocks outside the frame rails with a 52" spread helps reduce body lean and improves handling. It also reduces overall axle motion on washboard surfaces like dirt roads. The rear suspension features 3" leaf springs, the same width as on Ford F-250/F-350 Super Duty, to provide enhanced cornering and control.



#### STRONG UP FRONT

**Hydroformed Front Frame Rails** – The hydroform molding process provides consistent material thickness, decreased thermal fatigue and increased strength, all of which are important when you consider that these rails bear the loads of the engine, transmission and front suspension. Hydroforming is one reason this is the strongest F-150 frame ever.

#### CRUNCH TIME

**Collapsible Front Horns** – Stamped-steel "horns" that help manage crash forces are forward of the front frame rails.

#### F1, ANYONE?

**Front Suspension** – With class-exclusive cast-aluminum lower control arms, this double-wishbone setup uses some basic design principles found in Formula One race cars. The overall result is a suspension that responds quickly, providing excellent ride and control, especially on rough surfaces.

STRUCTURE – SUSPENSION – BRAKES

WWW.FORDVEHICLES.COM

7

#### EXCEPTIONAL STOPPING POWER

**Standard 4-Wheel Vented Disc Anti-lock Brake System** – Another class exclusive, this system uses semi-metallic brake pads and large, vented rotors for outstanding stopping power. So when you need to stop, you get smooth, controlled and precise braking in a wide variety of on-road and off-road conditions. Standard Electronic Brake Force Distribution (EBD) manages the rear brakes to ensure maximum capability under heavy loads.

#### MORE METAL

**Fully Integrated Front Structure** – This forms the beefy front end of the F-150. Along with the high-strength steel cab and fully boxed frame, it helps deliver ride, handling and interior quietness that have changed what people expect from a full-size pickup.





# UNYIELDING STRENGTH

F-150's massive fully boxed frame with hydroformed front rails provides the foundation for exceptional strength. Crossmembers are welded through the side rails to create greater torsional resistance. Rocker panels are made from high-gauge, high-strength steel to resist bending. And Ford gave F-150 a fully integrated front structure to put more steel ahead of the passenger cabin. The entire vehicle design is optimized to absorb and dissipate energy and help maintain occupant compartment integrity. In the dramatic demonstration depicted here, 2 bulldozers try to crush a production-model F-150. Even after this brutal attack, the passenger cabin remains intact and the doors still open and close easily. This remarkable strength contributes to crash-test performance that is unequalled by any other full-size pickup.



Dramatization using 2005 model. Underbody digitally enhanced.



STRENGTH & SAFETY

9

WWW.FORDVEHICLES.COM

## RAISING THE BAR TO 5-STAR ★★★★★

Ford F-150 is the only full-size pickup to earn the National Highway Traffic Safety Administration's top rating of 5 Stars for both the driver and right-front passenger in the 2005 frontal crash category, and be named a Best Pick in frontal offset crash testing performed by the Insurance Institute for Highway Safety. The truck's unique structure is stronger in specific areas to help protect against intrusion. Other critical components are designed to collapse, absorb or channel energy away from occupants in a crash. The result is a truck that stands alone in crash test ratings for full-size pickups. Ford is proud of these independent test results. But more important are what these ratings can mean when you and your family need them most.





### BIG WHEELS KEEP ON TURNIN'

22" Polished Forged-Aluminum Wheels – Hammered out on a 6000-ton press, at 22" in diameter, these huge rollers are the largest offered on any full-size pickup. Bright-finish lug nuts accent the Bar & Shield logo on the center cap.

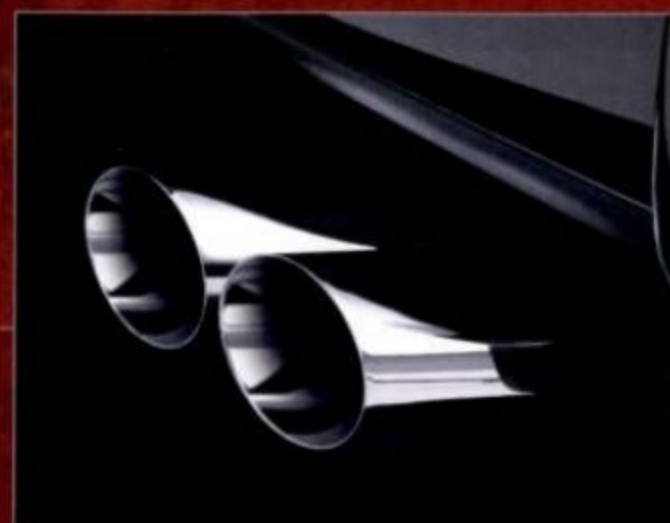


# TWICE THE ATTITUDE

Built Ford Tough meets Harley-Davidson in the baddest F-150 ever to come off the line. This jam-packed SuperCab has a truckload of styling cues straight out of Milwaukee, from its unique chromed billet-style grille to the massive 22" polished forged-aluminum wheels. And for road-hugging performance, this is the only F-150 offered with All-Wheel Drive. Get your motor running with a rugged F-Series pickup that's been given a Harley-Davidson makeover. Attitude adjustment included.

### HOT PIPES

Chrome Twin-Tip Sport-Tuned Exhaust – These functional, dual-out pipes are tuned for the engine, just like the ones found on the legendary motorcycles. This exhaust system decreases back pressure 20% to deliver all 300 hp and 365 lb.-ft. of torque from the standard 5.4L 3-Valve Triton® V8. And the bright twin exhaust tips look as good as they sound.



2006 FORD HARLEY-DAVIDSON™ F-150

WWW.FORDVEHICLES.COM

11



### ROCK ON DOWN THE HIGHWAY

Harley-Davidson Style – Bold gauges with chromed surrounds and the "Harley-Davidson" script communicate key information. The cabin features captain's chairs trimmed in aniline black leather, a high-gloss flow-through center console, and a leather-wrapped steering wheel. Piano-black veneer, famed Harley-Davidson Bar & Shield logos, and a custom serialization plate say, "Let's ride." Climb in, turn the key, and head for the horizon.

FORD HARLEY-DAVIDSON™ SUPERCAB 4x2 IN BLACK WITH AVAILABLE EQUIPMENT



# TALL IN THE SADDLE

Take the legendary toughness built into every F-150, wrap it in classic western style, and you've got the King Ranch SuperCrew. Its stunning interior is trimmed in yards of rich Castaño leather, and there's plenty of wide-open space to stretch out. A long list of standard features includes steering wheel-mounted audio/climate controls and heated front seats. Outside, 18" cast-aluminum wheels, or available 20" machined-aluminum wheels gleam like spurs. While Arizona Beige accents, platform running boards, and unique power-folding heated sideview mirrors with approach lamps are as handsome as they are practical. By any measure, the F-150 King Ranch outshines any truck in its class. And that means you're riding out ahead of the herd.



### TRICK MIRRORS

**Power-Folding Heated Sideview Mirrors** – No one-trick ponies, these unique power-folding mirrors do a lot more than reflect. They signal turns, heat up to melt snow and frost, light up the ground on both sides of the truck as you approach it in the dark, and fold away to avoid obstacles.



F-150 KING RANCH SUPERCREW INTERIOR WITH AVAILABLE EQUIPMENT



### SADDLE UP EASY

**Arizona Beige Platform Running Boards** – Unique to King Ranch, these large side steps ease entry and exit, and are illuminated by approach lamps in the sideview mirrors.



### FINE TOOLING

**Instrument Panel** – It's a style you'll find only in the F-150 King Ranch, with rich, woodgrain-appearance trim and a two-tone steering wheel wrapped in Castaño leather. The flow-through console with floor shifter has Castaño leather covering the center armrest with convenient storage underneath.



F-150 KING RANCH 13

F-150 KING RANCH SUPERCREW 4x4 IN DARK COPPER/ARIZONA BEIGE TWO-TONE





ALREADY

# LOADED

The F-150 Lariat has a list of features so complete, you'll spend more time trying to figure out what *doesn't* come standard. Outside, a chromed grille surround, unique wheel-lip moldings and Lariat-exclusive 18" bright aluminum wheels define the look. Inside, enjoy leather-trimmed seating and a color-coordinated, leather-wrapped steering wheel with secondary audio and climate controls. A premium AM/FM stereo/single-CD player, remote keyless entry, and power heated sideview mirrors are also included. Still not enough? Check out the Electronic Automatic Temperature Control, and message center with trip computer. Options? 20" machined-aluminum wheels, two-tone paint, running boards, heated front seats and an Audiophile® Sound System top a short list. So load up your Lariat with people and cargo, because almost everything else is already on board.



### KEEP 'EM ENTERTAINED

**Rear-Seat DVD Entertainment System** – This available system includes a full-color 7" LCD screen, wireless remote, 2 wireless headphones, and A/V jacks to connect gaming systems or other electronic equipment. Available on SuperCrew.



**F-150**  
LARIAT 5.4 TRITON

### EXECUTIVE-CLASS CABIN

**Instrument Panel** – Woodgrain-style accents please the eye. Electronic Automatic Temperature Control, leather-wrapped steering wheel with secondary audio/climate controls, and enhanced message center improve the driving experience. (Some items shown are optional.)



LARIAT 15

WWW.FORDVEHICLES.COM



### LARIAT STYLE AND COMFORT

**Standard Leather** – Lariat is distinguished by its steering wheel and seats – which are trimmed in color-coordinated leather – and by its woodgrain-appearance trim.

**Deluxe Heated Seats Package** – Includes heated driver and right-front passenger seats, power passenger's seat, memory driver's seat, available with 40/20/40 split bench or optional captain's chairs, and memory power-adjustable pedals (required). Optional on Lariat.

F-150 LARIAT SUPERCREW 4x4 IN SMOKESTONE/ARIZONA BEIGE TWO-TONE WITH AVAILABLE EQUIPMENT



F-150 FX4 SUPERCAB WITH AVAILABLE BLACK LEATHER-TRIMMED FRONT SEATS, FLOW-THROUGH CENTER CONSOLE AND OTHER OPTIONS



**FX4**  
OFF ROAD



**THE GREAT INDOORS**

FX4 Interior – The F-150 FX4 interior features available sport leather-trimmed front captain's chairs with flow-through center console (left) or a durable sport cloth 40/20/40 split front seat (above).

# WORLD-CLASS CLIMBER

When the journey takes you off-road, F-150 FX4 is the truck to have. Its standard 300-hp 5.4L 3-Valve Triton® V8 is ready to power-through rugged terrain. Specially tuned off-road shocks, 3"-wide rear leaf springs, a limited-slip rear axle, skid plates and outboard-mounted rear shocks make FX4 well-equipped for off-roading. Electronic Shift-On-the-Fly 4-wheel drive, including a rock-crawlin' 4-wheel-low range, helps dig in wherever traction is a challenge. And its superb ride and handling make FX4 as comfortable on-road as it is qualified off-road. Ready for an outstanding 4x4 experience? FX4 can take you to the top.

**VITAL PROTECTION**

Skid Plates – Steel plates protect the front crossmember and transfer case, and a composite plate guards the fuel tank. FX4 is equipped for the extra punishment off-roading dishes out.



F-150 FX4 SUPERCAB 4x4 FLARESIDE IN BRIGHT RED/DARK SHADOW GREY TWO-TONE WITH AVAILABLE EQUIPMENT

FX4 **17**



# ALL-AROUND ATHLETE

Available with every cab size, body style, box size and engine option, in 4x2 or 4x4, F-150 XLT is the most versatile player in the line. From the best-in-class interior volume Regular Cab and SuperCab, to the spacious SuperCrew, XLT accommodates you, your projects, your life. Premium cloth seats, autolamp, outside temperature/compass display and remote keyless entry are just some of the standard features that make XLT a smart pick. And if hauling and towing are required, the available Heavy Duty Payload Package equips XLT to handle maximum loads. In the full-size pickup game, F-150 XLT is a slam dunk.



## STORE IT UP TOP

**Overhead Rail Storage System** – Keep your essentials accessible and organized with this available, class-exclusive, innovative system that includes 2 stationary light clusters and a large storage bin. Additional packages available through your dealer include features such as SnakeLights® (shown at left), DVD/CD case, a DC/AC inverter or First-Aid Kit.



**F-150**  
XLT TRITON



## INSPIRATIONAL

**Moonroof** – Look up for a glimpse of the stars. Open it up for a fresh breeze. Select this available power moonroof with tinted glass for a refreshing view.



## JUST AS VERSATILE INSIDE

**Premium Cloth Captain's Chairs** – You can opt for these available seats with manual lumbar support or the standard front premium cloth 40/20/40 split bench. Along with the captain's chairs, you get a center console with handy cupholders and convenient storage. SuperCab and SuperCrew both feature a 60/40 split flip-up rear bench.

XLT **19**  
WWW.FORDVEHICLES.COM



## MORE CONVENIENCES

**SuperCab 2nd-Row Power Windows** – 2nd-row passengers take a back seat to no one with their own power windows. XLT's standard 2nd-row power windows are an F-150 class-exclusive on a SuperCab pickup.

**Reverse Sensing System** – This available system sounds an alert when backing up if something is behind the vehicle. The closer you get to the object, the quicker it beeps.

F-150 XLT SUPERCREW 4x4 IN DARK TOREADOR RED METALLIC WITH AVAILABLE EQUIPMENT



# STX



### YOU'RE THE DJ

**Audiophile® Sound System** – This available audio system includes an MP3-capable 6-disc in-dash CD changer, subwoofer and speed-compensated volume control. It's ready to take the party wherever you roam. For the ultimate in automotive audio programming, get the factory-installed SIRIUS Satellite Radio option to access digital-quality programming coast to coast, including 65 channels of commercial-free music and over 55 channels of sports, news, talk and entertainment. Ask your Ford Dealer about SIRIUS subscription and activation details.



# MADE YOU LOOK

And that's the whole point of driving the F-150 STX. It takes the bold style of the F-150 and pumps it up. The standard body-color grille surround and bumpers, plus STX-exclusive 17" machined-aluminum wheels, make this truck a real crowd-pleaser. The available Audiophile® AM/FM stereo/6-disc in-dash CD changer with MP3 capability and subwoofer plays your favorite tunes with digital clarity. Add a Flareside box to give your STX a different set of curves, with integral tie-downs as a nod to practicality. If you want a truck that's as serious about being seen as it is about being tough, your only choice is the F-150 STX.



### BRIGHT IDEAS

**17" Wheels** – Standard machined-aluminum wheels (left) have a cool, matte finish. Available chrome-clad steel wheels (right) add some serious shine. P255/65R17 all-season OWL tires come on 4x2, and 4x4 gets beefy P255/70R17 all-terrain treads.



### REC ROOM

**Super Space** – Best-in-class SuperCab interior room offers generous space for up to 6 occupants. Bring the party along. **Steering Wheel Controls** – A standard tilt steering wheel helps you find the driving position that fits. Choose available steering wheel mounted speed control for command of long-distance cruising.



### IN CONTROL



XL REGULAR CAB 4x4 IN TRUE BLUE METALLIC WITH AVAILABLE XL DECOR GROUP AND HEAVY DUTY PAYLOAD PACKAGE

**F-150**  
XL

# GETTIN' IT DONE

The F-150 XL is the cornerstone for every truck in the line. It has the rugged features that deliver renowned F-150 performance, including fully boxed frame rails, a beefy suspension and power 4-wheel vented disc anti-lock brakes in a package that defines a great pickup truck. The standard 4.2L V6 with an available 5-speed manual transmission or 4-speed automatic delivers ample capabilities. And if your line of work calls for more, step up to either the 4.6L or 5.4L 3-Valve Triton® V8. Properly equipped, XL is ready to haul up to 3060 lbs., or tow all the way up to a 9900-lb. limit. F-150 XL is the truck with a work ethic that's just as strong as yours.



### EASY DOES IT

**Exclusive 4-Door Regular Cab** (left) – Best-in-class Regular Cab and SuperCab interior volumes let you spread out. Behind its seat, Regular Cab serves up over 17 cu. ft. of secure storage. Get the available cargo tray (shown) to help keep things organized.

**Tailgate Assist™** (right) – This patented torsion bar system makes opening and closing the rugged steel tailgate a breeze.

GENUINE FORD ACCESSORIES

23

## POWER UP WITH GENUINE FORD ACCESSORIES

To make driving your new F-150 even more satisfying, personalize it with Genuine Ford Accessories. Engineered by Ford for excellent fit and durability, Genuine Ford Accessories take comfort, convenience and style to the next level. Get precise, professional installation from your Ford Dealer when you buy or lease your new F-150, and Ford Motor Company backs them with a 3-year/36,000-mile limited warranty.\* To see the complete selection, ask for a Genuine Ford Accessories catalog or visit [www.fordvehicles.com](http://www.fordvehicles.com).

\*12-month/12,000-mile limited warranty if Genuine Ford Accessories are not installed by a Ford Dealer or are purchased after initial vehicle sale. See your dealer for details.



Chromed Bug Shield

Bedliner

Molded Splash Guards

Chromed Trailer Tow Mirrors

Custom Wheels



GENUINE  
ACCESSORIES



[fordaccessoriesstore.com](http://fordaccessoriesstore.com)

# SPECIFICATIONS

## MODEL LINEUP

Each series includes the standard equipment of the previous series, except where additions/exceptions are noted. Vehicles shown may contain optional equipment.



### XL

Argent front and rear step bumpers • Black grille surround, bar-style grille and front bumper upper fascia • Black manual sideview mirrors • 17" steel wheels • Solar-tinted glass with fixed rear window • Covered visor vanity mirrors • Black vinyl floor covering • Vinyl 40/20/40 split front seat • Driver's manual lumbar • Black urethane steering wheel



### STX

Body-color front and rear step bumpers • Body-color grille surround and upper fascia • AM/FM stereo with single-CD player • 17" machined-aluminum wheels • Cloth 40/20/40 split front seat • Front-seat center armrest with storage bin and cupholders (available Flareside model shown)



### XLT

Chrome front and rear step bumpers • Black honeycomb-style grille • Remote keyless-entry system • Power sideview mirrors • Power accessory delay • Color-coordinated carpet and floor mats • Tachometer • Speed control • Color-coordinated steering wheel • Power windows, including 2nd-row on SuperCab and SuperCrew • Outside temperature and compass display • Premium cloth 40/20/40 split front seat with driver and right-front-passenger manual lumbar • 17" chrome-clad steel wheels • Autolamp



### FX4

FX4 Off-Road decals • Color-coordinated front and rear step bumpers • Black bar-style grille • Dark grey wheel-lip moldings • Black leather-wrapped steering wheel • Black rubber off-road floor mats • Sport cloth 40/20/40 split front seat with driver and right-front-passenger manual lumbar • 18" machined cast-aluminum wheels • Electronic Shift-On-the-Fly 4x4 • Limited-slip rear axle • Off-road tuned shocks • Skid plates – 2 steel (front crossmember and transfer case), 1 composite (fuel tank)



### LARIAT

Chrome front and rear step bumpers (with monotone paint) • Arizona Beige front and rear step bumpers (with two-tone paint) • Arizona Beige honeycomb-style grille • Color-coordinated wheel-lip moldings • Power, heated sideview mirrors with integrated turn signals • 18" bright aluminum wheels • Illuminated, covered visor vanity mirrors • Electronic Automatic Temperature Control • Rear-window defroster • Carpeted floor mats • Message center • Color-coordinated leather-wrapped steering wheel with secondary audio and climate controls • Power driver's seat • Leather-trimmed front seats • Auto-dimming rearview mirror



## STANDARD FEATURES

### MECHANICAL

100,000-mile tune-up interval\*  
Electronic Brake Force Distribution (EBD)  
Fail-safe engine cooling system  
Gas-pressurized shock absorbers  
Hood-open assist mechanisms  
Lightweight aluminum hood  
Maintenance-free 58-amp.-hr., 540-CCA battery with battery saver  
Power 4-wheel vented disc brakes with Anti-lock Brake System (ABS)  
Power rack-and-pinion steering  
Spare tire with wheel lock  
Stabilizer bar – Front  
Stainless steel exhaust system (major components)  
Suspension – Front: long-spindle, double-wishbone coil-over-shock  
Trailer tow – 4-pin connector

### SAFETY/SECURITY

Personal Safety System® for driver and right-front passenger – With dual-stage airbags,\*\* safety belt pretensioners, energy-management retractors, safety belt usage sensors, driver's-seat position sensor, crash severity sensor, Front-Passenger Sensing System† and restraint control module  
Alert chimes – Headlamps-on, key-in-ignition, safety belt  
Belt-Minder® safety belt reminder – Driver and right-front passenger  
Brake/shift interlock  
Fuel pump inertia shutoff switch  
LATCH – Lower anchors and tether anchors for child-safety seats  
SecuriLock® passive anti-theft system  
Side-intrusion door beams

### INTERIOR

Assist/grab handles – Driver and right-front passenger  
Coat hooks – 2  
Cupholders – Front, 2 on instrument panel (n/a with mechanical shift-on-the-fly) and 1 in each front-door map pocket  
Front dome/map lights  
Front-door map pockets  
Fuel gauge, voltmeter, oil pressure, engine coolant temperature, speedometer and odometer  
Glove compartment  
Horn – Dual note  
Power points – Front (all models), rear (in SuperCab and SuperCrew models)  
Tilt steering wheel

### EXTERIOR

Cargo box lamp – Integrated into center high-mounted stop lamp  
Cargo box tie-downs – 4  
Headlamps – Aerodynamic clear-lens quad-beam halogen  
Stake-bed pockets (n/a with Flareside or 5.5' box)  
Tailgate – Removable with key lock and Tailgate Assist™  
Windshield wipers – Interval

\*Under normal driving conditions with routine fluid and filter changes.

\*\*Always wear your safety belt, and in SuperCab and SuperCrew models, always secure children in the rear seat.

†Right-front passenger seat only.

# SPECIFICATIONS

## FEATURES & OPTIONS

	XL	STX	XLT	FX4	LARIAT
<b>MECHANICAL</b>					
4.2L V6 with 5-speed manual O/D (n/a with Flareside; 4x2 Regular Cab only)	●	●	○	○	○
4.2L V6 with 4-speed automatic O/D (4x2 Regular Cab only)	○	○	○	○	○
4.6L SOHC Triton® V8 with electronic 4-speed auto. O/D	●	●	●	●	●
5.4L SOHC 3-valve Triton V8 with electronic 4-speed auto. O/D	○	○	○	○	○
Axle upgrade (see Axle Availability chart for details)	○	○	○	○	○
Axle - Limited-slip rear (see Axle Availability chart for details)	○	○	○	○	○
17" grey styled-steel wheels	○	○	○	○	○
17" machined-aluminum wheels	○	○	○	○	○
17" chrome-clad steel wheels (n/a with 4.2L V6)	○	○	○	○	○
17" machined-aluminum wheels with painted accents	○	○	○	○	○
17" 7-lug grey steel wheels (requires Heavy Duty Payload Package - Regular Cab and SuperCab only)	○	○	○	○	○
18" machined cast-aluminum wheels	○	○	○	○	○
18" bright aluminum wheels	○	○	○	○	○
20" 6-spoke machined-aluminum wheels	○	○	○	○	○
P235/70R17 all-season BSW tires (5), 4x2 (Regular Cab and SuperCab)	●	●	○	○	○
P235/75R17 all-terrain BSW tires (5), 4x4 (Regular Cab and SuperCab)	○	○	○	○	○
P255/65R17 all-season OWL tires (4), 4x2 (optional on XLT Regular Cab and SuperCab, standard on SuperCrew)	○	○	○	○	○
P255/70R17 all-terrain OWL tires (5), 4x4 (optional on XLT Regular Cab and SuperCab, standard on SuperCrew)	○	○	○	○	○
P265/60R18 all-season OWL tires (5), 4x2	○	○	○	○	○
P275/65R18 all-terrain OWL tires (4), 4x4	○	○	○	○	○
P275/55R20 all-terrain OWL tires (4)	○	○	○	○	○
LT245/70R17D all-terrain BSW tires (5), 4x2/4x4 (requires Heavy Duty Payload Package - Regular Cab and SuperCab only)	○	○	○	○	○
LT275/65R18C all-terrain OWL tires (4), 4x4	○	○	○	○	○
Fuel tank - 26-gallon (126" WB on Regular Cab and 133" WB on SuperCab)	○	○	○	○	○
Fuel tank - 27-gallon	○	○	○	○	○
Fuel tank - 30-gallon (SuperCrew 5.5' box)	○	○	○	○	○
Fuel tank - 35.7-gallon (Regular Cab 8' box and SuperCab 6.5' box)	○	○	○	○	○
Traction Assist/Control (4x2 V8 only)	○	○	○	○	○
Reverse Sensing System (requires Trailer Tow Package)	○	○	○	○	○
<b>4x4-ONLY FEATURES</b>					
Mechanical shift-on-the-fly transfer case (Regular Cab and SuperCab)	○	○	○	○	○
Electronic Shift-On-the-Fly (ESOF) transfer case (standard on XLT SuperCrew)	○	○	○	○	○
Skid plates - Steel plates for front crossmember and transfer case; composite plate for fuel tank	○	○	○	○	○
Tow hooks - 2 front	○	○	○	○	○
<b>SAFETY/SECURITY</b>					
3-point restraints - All front outboard seat positions, all rear seat positions and Regular Cab front center position	●	●	●	●	●
Seat-Integrated Restraints (SIR) - Driver and right-front passenger (Regular Cab and SuperCab only)	○	○	○	○	○
2-point front center restraints (SuperCab and SuperCrew)	○	○	○	○	○
Non-SIR restraints - Driver and right-front passenger (SuperCrew only)	○	○	○	○	○
<b>SEATING</b>					
Front vinyl 40/20/40 split includes driver's manual lumbar	○	○	○	○	○
Front cloth 40/20/40 split includes driver's manual lumbar	○	○	○	○	○
Front premium cloth 40/20/40 split with driver and right-front-passenger manual lumbar	○	○	○	○	○
Front sport cloth 40/20/40 split with driver and right-front-passenger manual lumbar	○	○	○	○	○
Front leather-trimmed 40/20/40 split with driver and right-front-passenger manual lumbar	○	○	○	○	○
Front cloth captain's chairs with center console and driver's manual lumbar (4x2 SuperCab)	○	○	○	○	○
Front vinyl captain's chairs with center console (4x2 SuperCab)	○	○	○	○	○
Front premium cloth captain's chairs with center console and driver and front-passenger manual lumbar (SuperCab and SuperCrew only; SuperCab 4x4 XLT requires Electronic Shift-On-the-Fly)	○	○	○	○	○

● Standard ○ Select Availability ○ Optional — Not Available  
 \*Requires power driver's seat. \*\*Not available with Rear-Seat DVD Entertainment System or DVD Electrical Prep Package.  
 Not available in Alaska or Hawaii.

Audiophile is a registered trademark of Audiophile, Inc.

	XL	STX	XLT	FX4	LARIAT
<b>SEATING (continued)</b>					
Front sport cloth captain's chairs with flow-through console and floor shifter* (SuperCab and SuperCrew only)	○	○	○	○	○
Front sport leather-trimmed captain's chairs with flow-through console and floor shifter* (SuperCab and SuperCrew only)	○	○	○	○	○
Front leather-trimmed captain's chairs with flow-through console and floor shifter	○	○	○	○	○
Power driver's seat (SuperCab and SuperCrew only)	○	○	○	○	○
Rear 60/40 split flip-up - SuperCab and SuperCrew only, color/fabric matches front seat (when leather-trimmed front seat is ordered on SuperCab and/or FX4 SuperCrew, rear seat will be premium vinyl; Lariat SuperCrew includes 2nd-row folding armrest)	○	○	○	○	○
<b>INTERIOR</b>					
Air conditioning - Manual	○	○	○	○	○
Air conditioning - Electronic Automatic Temperature Control	○	○	○	○	○
AM/FM stereo with clock	○	○	○	○	○
AM/FM stereo with single-CD player and clock	○	○	○	○	○
AM/FM stereo with Dual-Media single-CD/cassette player and clock	○	○	○	○	○
AM/FM stereo/6-disc in-dash CD changer with MP3 capability and clock	○	○	○	○	○
Audiophile® Sound System - Includes 6-disc in-dash CD changer with MP3 capability and subwoofer	○	○	○	○	○
SIRIUS Satellite Radio Package** - Includes integrated satellite receiver, roof-mounted antenna and 6-month subscription	○	○	○	○	○
Autolamp - Automatic on/off headlamps	○	○	○	○	○
Black vinyl floor covering	○	○	○	○	○
Carpet - Color-coordinated with carpeted front and rear floor mats	○	○	○	○	○
Carpet - Color-coordinated with black rubber off-road floor mats	○	○	○	○	○
Cupholders - Rear, 2 (SuperCab and SuperCrew)	○	○	○	○	○
Display center - Includes odometer (trip/total), low fuel, door ajar, check gauges and more	○	○	○	○	○
Fade-to-off interior lighting	○	○	○	○	○
Interior lights with rear dome light (SuperCab and SuperCrew only)	○	○	○	○	○
Message center/trip computer - Includes display center features plus distance-to-empty, trip elapsed time, average fuel economy, low oil pressure, check-engine temp, check charging system, fail-safe engine cooling mode, low brake fluid and more	○	○	○	○	○
Outside temperature and compass display	○	○	○	○	○
Overhead mini-console with small storage bin (Regular Cab only)	○	○	○	○	○
Overhead Rail Storage System - Includes large storage bin and rear dome light (rear dome and map lights with SuperCrew) (SuperCab and SuperCrew only; n/a with power moonroof)	○	○	○	○	○
Power accessory delay	○	○	○	○	○
Power-adjustable pedals (n/a with 4.2L V6 manual)	○	○	○	○	○
Power door locks with autolock	○	○	○	○	○
Power moonroof - Includes overhead mini-console without storage bin (SuperCab and SuperCrew only, n/a with Overhead Rail Storage System)	○	○	○	○	○
Rear window - Fixed with solar tint	○	○	○	○	○
Rear window - Fixed with privacy tint	○	○	○	○	○
Rear window - Fixed with privacy tint and defroster	○	○	○	○	○
Rear window - Manual sliding with privacy tint (n/a with defroster)	○	○	○	○	○
Rear window - Power sliding with privacy tint (n/a with defroster; requires power driver's seat; SuperCab and SuperCrew only)	○	○	○	○	○
Speed control mounted on steering wheel	○	○	○	○	○
Steering wheel - Black urethane	○	○	○	○	○
Steering wheel - Color-coordinated urethane	○	○	○	○	○
Steering wheel - Black leather-wrapped	○	○	○	○	○
Steering wheel - Color-coordinated, leather-wrapped with secondary audio and climate controls	○	○	○	○	○
Tachometer (XL and STX w/manual trans. only)	○	○	○	○	○
Universal Garage Door Opener	○	○	○	○	○
Visors with covered mirrors	○	○	○	○	○
Visors with lighted, covered mirrors	○	○	○	○	○
Windows - 1st-row manual	○	○	○	○	○
Windows - 1st-row power solar-tinted with one-touch-down driver's-side feature	○	○	○	○	○
Windows - 2nd-row fixed (XLT and FX4 Regular Cabs)	○	○	○	○	○
Windows - 2nd-row power (SuperCab and SuperCrew only)	○	○	○	○	○

	XL	STX	XLT	FX4	LARIAT
<b>EXTERIOR</b>					
8' box - Styleside (Regular Cab)	○	○	○	○	○
8' box - Styleside (SuperCab with Heavy Duty Payload Package only)	○	○	○	○	○
6.5' box - Styleside (Regular Cab)	○	○	○	○	○
6.5' box - Styleside (SuperCab)	○	○	○	○	○
6.5' box - Flareside (Regular Cab/SuperCab)	○	○	○	○	○
6.5' box - Styleside or Flareside (SuperCrew available winter 2006)	○	○	○	○	○
5.5' box - Styleside (SuperCab)	○	○	○	○	○
5.5' box - Styleside (SuperCrew)	○	○	○	○	○
Bed extender (only available with 5.5' box)	○	○	○	○	○
Bumper - Front with black upper fascia	○	○	○	○	○
Bumper - Front with body-color upper fascia	○	○	○	○	○
Bumpers - Front and rear step (all front bumpers with black lower valance)	○	○	○	○	○
Bumpers - Argent	○	○	○	○	○
Bumpers - Chrome (Lariat with monotone paint)	○	○	○	○	○
Bumpers - Painted body-color (FX4 with monotone paint only)	○	○	○	○	○
Bumpers - Painted Arizona Beige with two-tone only	○	○	○	○	○
Bumpers - Painted Dark Shadow Grey with two-tone only	○	○	○	○	○
Fog lamps	○	○	○	○	○
Grille - Black surround	○	○	○	○	○
Grille - Body-color surround	○	○	○	○	○
Grille - Chromed surround	○	○	○	○	○
Grille - Black bar-style insert	○	○	○	○	○
Grille - Black honeycomb insert	○	○	○	○	○
Grille - Light Arizona Beige honeycomb insert	○	○	○	○	○
Keyless-entry keypad - Driver's door-mounted	○	○	○	○	○
Remote keyless-entry system with 2 key fobs, illuminated entry and panic button	○	○	○	○	○
Running boards - Black tubular (XLT Regular Cab only)	○	○	○	○	○
Running boards - Black platform (SuperCab and SuperCrew only)	○	○	○	○	○
Running boards - Polished stainless steel tubular	○	○	○	○	○
Sideview mirrors - Black, manual	○	○	○	○	○
Sideview mirrors - Black, power	○	○	○	○	○
Sideview mirrors - Black, power heated with exterior mirror-mounted turn-signal indicator	○	○	○	○	○
Two-tone paint - Standard on FX4 Flareside	○	○	○	○	○
Wheel-lip moldings - Dark grey	○	○	○	○	○
Wheel-lip moldings - Body-color (Lariat two-tone will be Arizona Beige)	○	○	○	○	○
<b>PACKAGES</b>					
<b>XL Décor Group</b> - Includes manual air conditioning, chrome front and rear bumpers, color-coordinated carpet and floor mats, cloth 40/20/40 split front seats	○	○	○	○	○
<b>Trailer Tow Package</b> (required for towing over 5000 lbs.) - Includes Class IV frame-mounted trailer hitch receiver, 7-pin wiring harness, heavy-duty 72-amp-hr. battery and upgraded radiator and auxiliary transmission oil cooler	○	○	○	○	○
<b>Heavy Duty Payload Package</b> - Increases GVWR to 8200 lbs. for improved payload and towing; includes 50 State Emissions; LT245/70R17D all-terrain BSW tires; high-capacity 17" 7-lug steel wheels; heavy-duty shock absorbers and 72-amp-hr. battery; upgraded springs and radiator; auxiliary transmission oil cooler; 5300-lb. rear axle with 10.25" gear set and 4.10 axle (Regular Cab and SuperCab only; requires 5.4L engine)	○	○	○	○	○
<b>Snow Plow Prep Package</b> - Available with 4x4 only (requires Heavy Duty Payload Package) and includes 4300-lb. maximum front springs/GAWR (Regular Cab and SuperCab only) Note: Restrictions apply, see your Ford Dealer for more information.	○	○	○	○	○

	XL	STX	XLT	FX4	LARIAT
<b>PACKAGES (continued)</b>					
<b>Ford Harley-Davidson™ F-150 Package</b> - Includes 22" polished forged-aluminum wheels with Bar & Shield logo on center cap; P275/45R22 all-season BSW tires; chromed, billet-style grille with body-color surround; unique ground-effect side tubes; unique black leather-trimmed captain's chairs with HARLEY-DAVIDSON Bar & Shield logo and power driver's seat; flow-through console and floor shifter with unique black leather lid and shifter knob; high-gloss black instrument panel with unique cluster and serialization badging; black leather-wrapped steering wheel; blacked-out headlamps; smoked taillamps; black Overhead Rail Storage System (n/a with power moonroof); sport-tuned shocks; bodyside graphics with "Harley-Davidson" script; unique "Harley-Davidson F-150" badges; unique rubber bed mat with HARLEY-DAVIDSON Bar & Shield logo; chromed-steel cargo box tie-down hooks; chrome twin-tip exhaust; 3.73 limited-slip axle; unique ignition keys with Ford/Harley-Davidson logo on key ends; unique power-adjustable pedals with memory; and windshield outlined with Bar & Shield logo (available as a SuperCab with 4x2 or all-wheel drive)	○	○	○	○	○
<b>King Ranch Package</b> - Includes unique King Ranch tailgate and fender badges; 18" 7-spoke cast-aluminum wheels with King Ranch paint treatment; unique King Ranch logo wheel ornaments; color-coordinated H-bar grille; color-coordinated box top and tailgate moldings; Arizona Beige platform running boards; power-folding heated signal mirrors with puddle lamps; Castaño leather-trimmed captain's chairs with power, heated driver and front passenger seats, memory driver's seat and front-passenger manual lumbar; front flow-through console and floor shifter with King Ranch leather kit; 2nd-row Castaño leather-trimmed flip-up 60/40 split bench with folding armrest; unique front and rear King Ranch floor mats; woodgrain-style trim (IP center panel, ashtray and door trim); and Overhead Rail Storage System (n/a with power moonroof) (SuperCrew only)	○	○	○	○	○
<b>Lariat Chrome Package</b> - Includes 18" chrome-aluminum wheels; P265/60R18 all-season OWL tires (4x2), P275/65R18 all-terrain OWL tires (4x4); 5" chrome tubular step bars; chrome exhaust tip; black honeycomb grille insert; chromed sideview mirror skull caps; and black door- and tailgate-handle bezels with chromed handle (n/a on Ford Harley-Davidson Package or King Ranch Package; n/a with two-tone paint; n/a with 20" wheels)	○	○	○	○	○
<b>XLT Chrome Package</b> - Includes 18" chrome-aluminum wheels, P265/60R18 all-season OWL tires (4x2), P275/65R18 all-terrain OWL tires (4x4), 5" chrome tubular step bars, chrome exhaust tip, color-coordinated leather-wrapped steering wheel, and chromed grille surround (n/a on Regular Cab or Heavy Duty Payload Package)	○	○	○	○	○
<b>Rear-Seat DVD Entertainment System</b> - Includes DVD player, 7" flip-down LCD screen, rear-seat audio controls, handheld remote control, 2 wireless headphones and audio/video jacks for games or other electronic equipment (SuperCrew only; n/a with power moonroof)	○	○	○	○	○
<b>Deluxe Heated Seats Package</b> - Includes heated driver and right-front-passenger seats, power passenger's seat, memory driver's seat, and memory brake and accelerator pedals (requires power-adjustable pedals)	○	○	○	○	○
<b>Deluxe Mirror Package</b> - Includes power, heated sideview mirrors with exterior mirror-mounted turn-signal indicator and auto-dimming rearview mirror (n/a with King Ranch Package)	○	○	○	○	○
<b>DVD Electrical Prep Package</b> - Allows aftermarket installation of Rear-Seat DVD Entertainment System (requires Overhead Rail Storage System; n/a with power moonroof, SIRIUS Satellite Radio or Rear-Seat DVD Entertainment System; SuperCrew only)	○	○	○	○	○

# SPECIFICATIONS

## PAYLOAD PACKAGES

REGULAR CAB 4x2 STYLE SIDE			
WHEELBASE (IN.)	ENGINE	MAX. PAYLOAD (LBS.)	GVWR (LBS.)
126	4.2L	1900	6500
	4.6L	1960	6650
	5.4L	1820	6650
144.5	4.2L	1920	6650
	4.6L	1970	6800
	5.4L	2090	7050
	5.4L	3060	8200*

SUPERCAB 4x2 STYLE SIDE			
WHEELBASE (IN.)	ENGINE	MAX. PAYLOAD (LBS.)	GVWR (LBS.)
133	4.6L	1680	6650
	5.4L	1810	6950
144.5	4.6L	1640	6700
	5.4L	1890	7050
163	5.4L	2710	8200*

SUPERCREW 4x2 STYLE SIDE			
WHEELBASE (IN.)	ENGINE	MAX. PAYLOAD (LBS.)	GVWR (LBS.)
139	4.6L	1630	6800
	5.4L	1780	7050
150.5	4.6L	1520	6800
	5.4L	1670	7050

REGULAR CAB 4x4 STYLE SIDE			
WHEELBASE (IN.)	ENGINE	MAX. PAYLOAD (LBS.)	GVWR (LBS.)
126	4.6L	1810	6800
	5.4L	1720	6850
144.5	4.6L	1820	6950
	5.4L	1690	6950
	5.4L	2710	8200*

SUPERCAB 4x4 STYLE SIDE			
WHEELBASE (IN.)	ENGINE	MAX. PAYLOAD (LBS.)	GVWR (LBS.)
133	4.6L	1630	6900
	5.4L	1710	7150
144.5	4.6L	1600	6950
	5.4L	1740	7200
163	5.4L	2360	8200*

SUPERCAB HARLEY-DAVIDSON AWD STYLE SIDE			
WHEELBASE (IN.)	ENGINE	MAX. PAYLOAD (LBS.)	GVWR (LBS.)
144.5	5.4L	1524	7200

SUPERCREW 4x4 STYLE SIDE			
WHEELBASE (IN.)	ENGINE	MAX. PAYLOAD (LBS.)	GVWR (LBS.)
139	4.6L	1430	6900
	5.4L	1630	7200
150.5	4.6L	1300	6900
	5.4L	1500	7200

\*Requires Heavy Duty Payload Package.

REGULAR CAB 4x2 FLARE SIDE			
WHEELBASE (IN.)	ENGINE	MAX. PAYLOAD (LBS.)	GVWR (LBS.)
126	4.2L	1880	6500
	4.6L	1940	6650
	5.4L	1800	6650

SUPERCAB 4x2 FLARE SIDE			
WHEELBASE (IN.)	ENGINE	MAX. PAYLOAD (LBS.)	GVWR (LBS.)
144.5	4.6L	1620	6700
	5.4L	1870	7050

SUPERCREW 4x2 FLARE SIDE			
WHEELBASE (IN.)	ENGINE	MAX. PAYLOAD (LBS.)	GVWR (LBS.)
150.5	4.6L	1500	6800
	5.4L	1650	7050

REGULAR CAB 4x4 FLARE SIDE			
WHEELBASE (IN.)	ENGINE	MAX. PAYLOAD (LBS.)	GVWR (LBS.)
126	4.6L	1790	6800
	5.4L	1700	6850

SUPERCAB 4x4 FLARE SIDE			
WHEELBASE (IN.)	ENGINE	MAX. PAYLOAD (LBS.)	GVWR (LBS.)
144.5	4.6L	1570	6950
	5.4L	1720	7200

SUPERCREW 4x4 FLARE SIDE			
WHEELBASE (IN.)	ENGINE	MAX. PAYLOAD (LBS.)	GVWR (LBS.)
150.5	4.6L	1280	6900
	5.4L	1480	7200

Note: All figures are subject to change.

## MAXIMUM PAYLOAD



REGULAR CAB STYLE SIDE 4x2 - 3060 lbs.  
REGULAR CAB FLARE SIDE 4x2 - 1940 lbs.



SUPERCAB STYLE SIDE 4x2 - 2710 lbs.  
SUPERCAB FLARE SIDE 4x2 - 1870 lbs.



SUPERCREW STYLE SIDE 4x2 - 1780 lbs.  
SUPERCREW FLARE SIDE 4x2 - 1650 lbs.

## MAXIMUM TOWING



SUPERCREW 4x2 - 9500 lbs.  
SUPERCREW 4x4 - 9200 lbs.



SUPERCAB 4x2 - 9500 lbs.  
SUPERCAB 4x4 - 9300 lbs.



REGULAR CAB 4x2 - 9900 lbs.  
REGULAR CAB 4x4 - 9500 lbs.

## ENGINES



ENGINE	TRANSMISSION	HORSEPOWER (HP @ RPM)	TORQUE (LB.-FT. @ RPM)	2006 EPA-ESTIMATED FUEL ECONOMY**			
				4x2		4x4	
				CITY	HWY.	CITY	HWY.
4.2L EFI V6	5-speed man. O/D	202 @ 4350	260 @ 3750	15 mpg	20 mpg	—	—
	4-speed auto. O/D	202 @ 4350	260 @ 3750	16 mpg	20 mpg	—	—
4.6L Triton® V8	4-speed auto. O/D	231 @ 4750	293 @ 3500	15 mpg	19 mpg	14 mpg	18 mpg
5.4L 3-Valve Triton V8	4-speed auto. O/D	300 @ 5000	365 @ 3750	14 mpg	19 mpg	14 mpg	18 mpg

\*\*Actual mileage may vary with driving habits. 5.4L 3-Valve Triton V8 4-speed auto. O/D AWD 14 mpg city/18 hwy.

## AXLE AVAILABILITY

CAB	ENGINE	SERIES/PKG.	DRIVETRAIN	TIRES	NON-LIMITED-SLIP REAR AXLE			LIMITED-SLIP REAR AXLE			
					3.31	3.55	3.73	4.10	3.55	3.73	4.10
Regular or SuperCab	4.6L	XL, XLT	4x2	P235/70R17 A/S BSW	—	●	○	—	○	○	—
Regular or SuperCab	5.4L	XL, XLT	4x2	P235/70R17 A/S BSW	—	●	○	—	○	○	—
Regular or SuperCab	Any	XL, XLT	4x4	P235/75R17 A/T BSW	—	●	○	—	○	○	—
Regular Cab	4.2L†	XL, XLT	4x2	P235/70R17 A/S BSW	●	○	●	—	○	●	—
All	4.6L	XL, STX, XLT	4x2	P255/65R17 A/S OWL	—	●	○	—	○	○	—
All	5.4L	XL, XLT	4x2	P255/65R17 A/S OWL	—	●	○	—	○	○	—
All	4.6L	XL, STX, XLT	4x4	P255/70R17 A/T OWL	—	●	●	—	●	○	—
All	5.4L	XL, XLT	4x4	P255/70R17 A/T OWL	—	●	○	—	○	○	—
All	5.4L	FX4	4x4	P255/70R17 A/T OWL	—	—	—	—	●	○	—
Regular Cab	4.2L†	XL, XLT	4x2	P255/65R17 A/S OWL	●	○	●	—	○	●	—
Regular Cab	4.2L	STX	4x2	P255/65R17 A/S OWL	—	●	●	—	—	●	—
SuperCab or SuperCrew	4.6L	XLT	4x2	P265/60R18 A/S OWL	—	●	○	—	○	○	—
SuperCab or SuperCrew	4.6L	XLT	4x4	P265/60R18 A/S OWL	—	—	●	—	—	○	—
SuperCab or SuperCrew	5.4L	Lariat	4x2	P265/60R18 A/S OWL	—	●	○	—	○	○	—
SuperCab or SuperCrew	5.4L	XLT	4x2/4x4	P265/60R18 A/S OWL	—	●	○	—	○	○	—
All	5.4L	FX4	4x4	P275/65R18 A/T OWL	—	—	—	—	—	●	—
SuperCab or SuperCrew	5.4L	Lariat	4x4	P275/65R18 A/T OWL	—	—	●	—	—	○	—
SuperCab or SuperCrew	5.4L	FX4	4x4	P275/55R20 A/T OWL	—	—	—	—	●	○	—
SuperCab or SuperCrew††	5.4L	Lariat	4x2/4x4	P275/55R20 A/T OWL	—	—	○	—	●	○	—
SuperCab‡	5.4L	Lariat	4x2/4x4	P275/45R22 A/S BSW "V" Rated for H-D	—	—	—	—	—	●	—
Regular or SuperCab	5.4L	Payload Pkg.	4x2/4x4	LT245/70R17D A/T BSW	—	—	—	●	—	—	○
Regular or SuperCab§§	4.6L/5.4L	XL, XLT	4x2/4x4	LT245/70R17D A/T BSW	—	●	○	—	○	○	—
All	5.4L	FX4	4x4	LT275/65R18 A/T OWL	—	—	—	—	—	●	—
SuperCab or SuperCrew	5.4L	Lariat	4x4	LT275/65R18 A/T OWL	—	—	●	—	—	○	—

● Standard ● Select Availability ○ Optional — Not Available

†3.55 axle or higher required with automatic transmission. ††Optional with King Ranch Package (3.55 axle n/a with King Ranch). ‡Harley-Davidson™ only. §§Fleet only.

## CONVENTIONAL TOWING — Maximum Loaded Trailer Weight Ratings (lbs.)

ENGINE	AXLE RATIO	MAX. GCWR (LBS.)	REGULAR CAB 4x2		REGULAR CAB 4x4		SUPERCAB 4x2			SUPERCAB 4x4			SUPERCAB AWD 4x2		SUPERCREW 4x2		SUPERCREW 4x4	
			126.0" WB	144.5" WB	126.0" WB	144.5" WB	132.5" WB	144.5" WB	163.0" WB	132.5" WB	144.5" WB	163.0" WB	145.0" WB†	138.5" WB	150.5" WB	138.5" WB	150.5" WB	
4.2L SEFI V6 Manual*	3.31	7200	2400	2300	—	—	—	—	—	—	—	—	—	—	—	—	—	—
	3.55	8500	3700	3600	—	—	—	—	—	—	—	—	—	—	—	—	—	—
4.2L SEFI V6 Automatic	3.55	10,000	5200	5100	—	—	—	—	—	—	—	—	—	—	—	—	—	—
	3.73	10,500	5700	5600	—	—	—	—	—	—	—	—	—	—	—	—	—	—
4.6L Triton V8 Automatic	3.55	11,500	6600	—	6300	—	6000	—	6000	—	—	—	—	—	—	—	—	—
		11,700	—	6700	—	6400	—	6200	—	6200	—	—	6300	6200	—	—	—	
	3.73	12,000	7100	—	6800	—	6500	—	6500	—	—	—	—	—	—	—	—	—
		12,200	—	7200	—	6900	—	6700	—	6700	—	—	6800	6700	6500	6400	—	—
5.4L 3-Valve Triton V8** Automatic	3.55	13,000	8000	—	7700	—	7400	—	7400	—	—	—	—	—	—	—	—	—
		14,000	—	8800	—	8500	—	8300	—	8300	—	—	8500	8400	8200	8100	—	—
	3.73	13,500	8500	—	8200	—	7900	—	7900	—	—	—	—	—	—	—	—	—
		14,500	—	—	—	—	—	—	—	—	—	8600	—	—	—	—	—	—
4.10	15,300	—	9900	—	9500	—	9300	—	9300	—	—	9500	9400	9200	9100	—	—	

\*Late availability. \*\*Reduce GCWR/maximum trailer weight by 500 lbs. on FX4 and Lariat with optional 18" wheels.

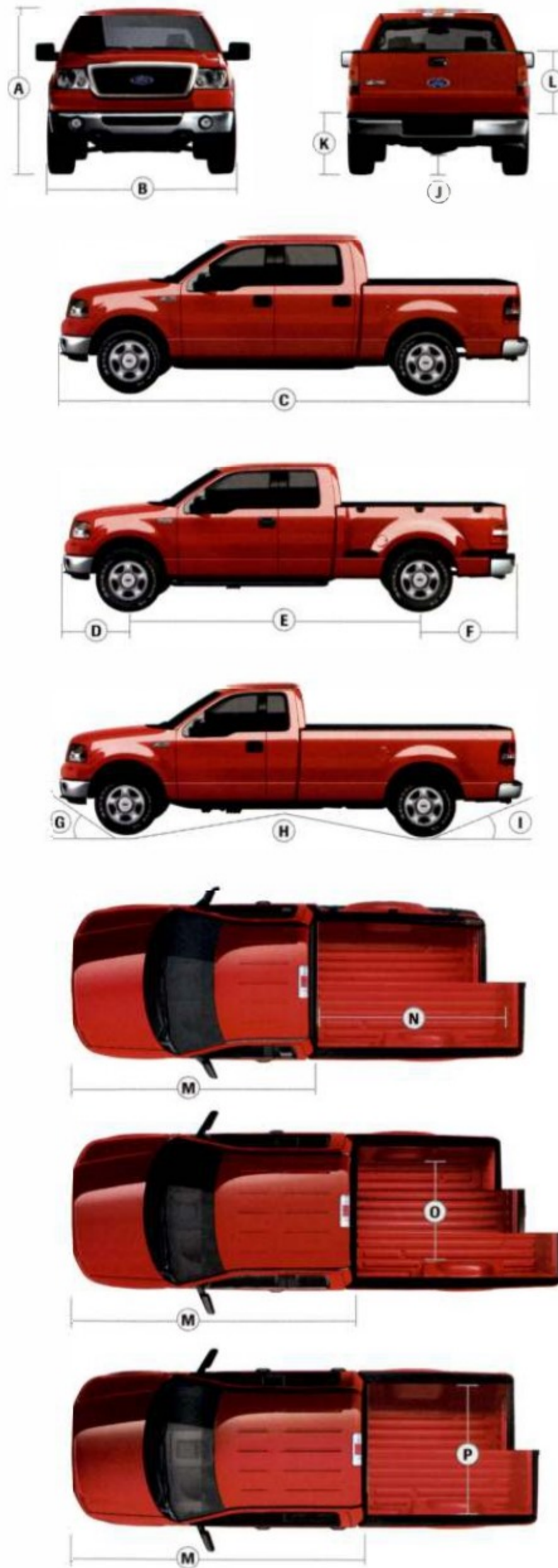
Note: Maximum loaded trailer weights shown. The combined weight of the towing vehicle (including hitch, passengers and cargo) and the loaded trailer must not exceed the Gross Combination Weight Rating (GCWR).

Note: See RV and Trailer Towing Guide for requirements and restrictions and 5th-wheel towing.



# SPECIFICATIONS

## DIMENSIONS



	REGULAR CAB 4x2/4x4 STYLESIDE	SUPERCAB 4x2/4x4 STYLESIDE	SUPERCREW 4x2/4x4 STYLESIDE
<b>EXTERIOR</b>			
<b>A</b> Overall height			
5.5' box	—	74.0"/76.5"	73.5"/76.0"
6.5' box	73.7"/75.6"	73.5"/75.6"	73.5"/76.0"
8' box	73.8"/75.6"	73.4"/75.4"	—
<b>B</b> Overall width (excl. mirrors)	78.9"	78.9"	78.9"
<b>C</b> Overall length			
5.5' box	—	217.8"	223.8"
6.5' box	211.2"	229.8"	235.8"
8' box	229.8"	248.4"	—
<b>D</b> Overhang – Front	36.9"	36.9"	36.9"
<b>E</b> Wheelbase			
5.5' box	—	132.5"	138.5"
6.5' box	126.0"	144.5"	150.5"
8' box	144.5"	163.0"	—
<b>F</b> Overhang – Rear	48.4"	48.4"	48.4"
<b>G</b> Angle of approach (SWB)	19.5°/24.0°	20.5°/27.0°	19.5°/25.0°
<b>H</b> Ramp breakover angle (SWB)	20.1°/22.0°	18.9°/21.1°	17.7°/21.2°
<b>I</b> Angle of departure (SWB)	23.3°/26.0°	23.1°/25.4°	22.4°/25.2°
<b>J</b> Ground clearance (rear axle)	8.8"/8.7"	8.3"/8.5"	8.2"/8.1"
<b>K</b> Load floor height (open tailgate to ground, empty)			
5.5' box	—	33.0"/35.1"	32.4"/34.8"
6.5' box	33.1"/35.6"	32.6"/34.9"	32.4"/34.8"
8' box	33.5"/35.9"	33.5"/35.4"	—
<b>L</b> Cargo box height with moldings	22.3"	—	22.3"
<b>M</b> Cab length	124.9"	143.5"	149.3"

### INTERIOR

#### 1st Row

Head room	40.9"	40.9"	40.1"
Shoulder room	66.5"	66.5"	65.8"
Hip room	65.4"	65.8"	63.8"
Leg room	41.3"	41.3"	41.3"

#### 2nd Row

Head room	—	39.8"	39.8"
Shoulder room	—	66.7"	65.8"
Hip room	—	66.5"	63.1"
Leg room	—	32.7"	39.0"

SWB = Short Wheelbase

### CARGO AREA

	5.5' STYLESIDE BOX	6.5' STYLESIDE BOX	6.5' FLARESIDE BOX	8' STYLESIDE BOX
Volume (cu. ft.)	55.5	65.5	59.1	81.3
<b>N</b> Length at floor	67.0"	78.8"	78.8"	97.4"
<b>O</b> Width at wheelhouse	50.0"	50.0"	50.0"	50.0"
<b>P</b> Maximum width inside box	65.2"	65.2"	59.3"	65.2"

## WHEELS



17" Grey Styled-Steel Wheel (XL)



17" Machined-Aluminum Wheel (STX)



17" Chrome-Clad Steel Wheel (XLT – standard, STX – available)



17" Machined-Aluminum Wheel with Painted Accents (XLT – available)



18" Machined Cast-Aluminum Wheel (FX4)



18" Bright Aluminum Wheel (Lariat)



18" 7-Spoke Cast-Aluminum Wheel (King Ranch)



18" Chrome-Aluminum Wheel (Standard with Lariat and XLT Chrome Packages)



20" 6-Spoke Machined-Aluminum Wheel (FX4, Lariat, King Ranch – available)



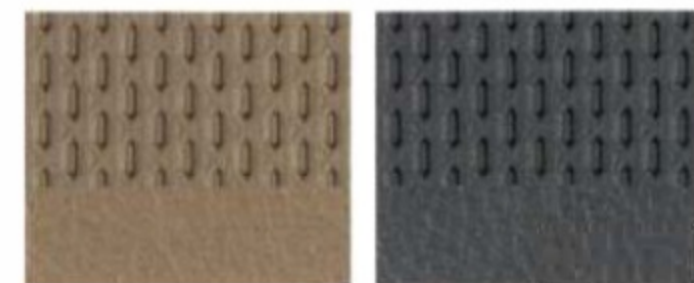
22" Polished Forged-Aluminum Wheel (Harley-Davidson™ Package)



17" 7-Lug Grey Steel Wheel (Heavy Duty Payload Package)

# SPECIFICATIONS

## INTERIOR COLORS



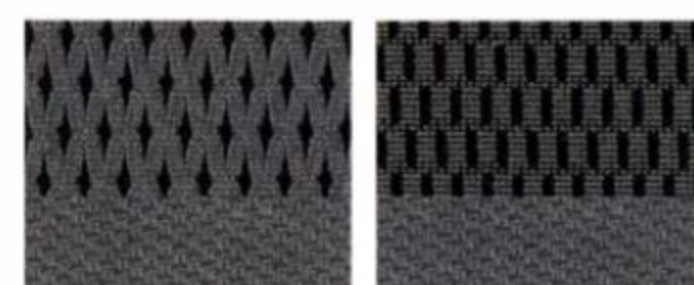
Tan Vinyl Medium Flint Vinyl



Tan Cloth Medium Flint Cloth



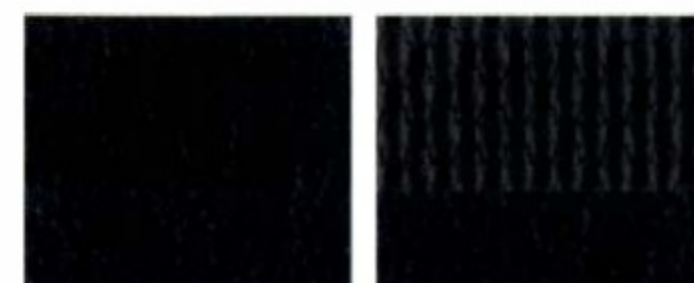
Tan Premium Cloth Dark Flint Premium Cloth



Medium Flint Sport Cloth Medium Flint/Dark Flint Two-Tone Premium Cloth



Black Sport Cloth Medium Flint Sport Leather



Black Leather Black Sport Leather



Tan Leather Castaño Leather



Aniline Black Leather

**TAN**  
**MEDIUM FLINT**  
**DARK FLINT**  
**MEDIUM FLINT/DARK FLINT TWO-TONE**  
**BLACK**

### XL

Oxford White  
 Arizona Beige Metallic  
 Bright Red  
 Dark Toreador Red Metallic  
 Aspen Green Metallic  
 Medium Wedgewood Blue Metallic  
 True Blue Metallic  
 Silver Metallic  
 Dark Shadow Grey Metallic  
 Black

### STX

Oxford White  
 Bright Red  
 Silver Metallic  
 Dark Shadow Grey Metallic  
 Dark Stone Metallic  
 Black

### XLT

Oxford White  
 Oxford White/Arizona Beige Metallic  
 Arizona Beige Metallic  
 Bright Red  
 Bright Red/Arizona Beige Metallic  
 Bright Red/Silver Metallic  
 Dark Toreador Red Metallic  
 Dark Toreador Red Metallic/Arizona Beige Metallic  
 Dark Toreador Red Metallic/Silver Metallic  
 Aspen Green Metallic  
 Aspen Green Metallic/Arizona Beige Metallic  
 Aspen Green Metallic/Silver Metallic  
 Medium Wedgewood Blue Metallic  
 Medium Wedgewood Blue Metallic/Arizona Beige Metallic  
 Medium Wedgewood Blue Metallic/Silver Metallic  
 True Blue Metallic  
 True Blue Metallic/Silver Metallic  
 Silver Metallic  
 Dark Shadow Grey Metallic  
 Dark Shadow Grey Metallic/Silver Metallic  
 Dark Stone Metallic  
 Dark Stone Metallic/Arizona Beige Metallic  
 Black  
 Black/Arizona Beige Metallic  
 Black/Silver Metallic

**TAN**  
**MEDIUM FLINT**  
**DARK FLINT**  
**MEDIUM FLINT/DARK FLINT TWO-TONE**  
**BLACK**  
**BLACK/MEDIUM FLINT**

### FX4

Oxford White  
 Oxford White/Dark Shadow Grey Metallic  
 Bright Red  
 Bright Red/Dark Shadow Grey Metallic  
 True Blue Metallic  
 True Blue Metallic/Dark Shadow Grey Metallic  
 Silver Metallic  
 Silver Metallic/Dark Shadow Grey Metallic  
 Dark Shadow Grey Metallic  
 Black  
 Black/Dark Shadow Grey Metallic

### LARIAT

Oxford White  
 Oxford White/Arizona Beige Metallic  
 Bright Red/Arizona Beige Metallic  
 Dark Toreador Red Metallic  
 Dark Toreador Red Metallic/Arizona Beige Metallic  
 Aspen Green Metallic  
 Aspen Green Metallic/Arizona Beige Metallic  
 Medium Wedgewood Blue Metallic/Arizona Beige Metallic  
 Dark Stone Metallic  
 Dark Stone Metallic/Arizona Beige Metallic  
 Black  
 Black/Arizona Beige Metallic  
 Smokestone Metallic\*  
 Smokestone Metallic\*/Arizona Beige Metallic

### KING RANCH

Oxford White/Arizona Beige Metallic  
 Aspen Green Metallic/Arizona Beige Metallic  
 Dark Stone Metallic/Arizona Beige Metallic  
 Dark Copper Metallic/Arizona Beige Metallic  
 Black/Arizona Beige Metallic

### FORD HARLEY-DAVIDSON™

Black

## EXTERIOR COLORS



Oxford White



Arizona Beige Metallic



Bright Red



Dark Toreador Red Metallic



Aspen Green Metallic



Medium Wedgewood Blue Metallic



True Blue Metallic



Silver Metallic



Dark Shadow Grey Metallic



Dark Stone Metallic



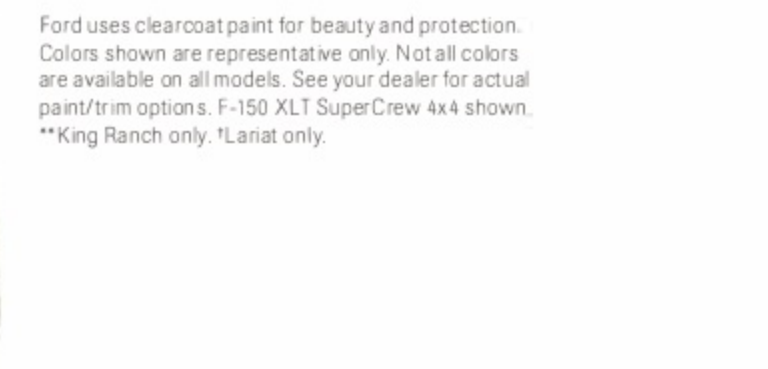
Black



Dark Copper Metallic\*\*



Smokestone Metallic†



Black

Ford uses clearcoat paint for beauty and protection. Colors shown are representative only. Not all colors are available on all models. See your dealer for actual paint/trim options. F-150 XLT SuperCrew 4x4 shown. \*\*King Ranch only. †Lariat only.

### New-Vehicle Limited Warranty

We want your Ford F-150 ownership experience to be the best it can be. So under this warranty, your new vehicle comes with 3-year/36,000-mile Bumper-to-Bumper Coverage, 5-year/50,000-mile Safety Restraint Coverage, and 5-year/unlimited-mile Corrosion (Perforation) Coverage — all with no deductible. Please ask your Ford Dealer for a copy of this limited warranty.

**Ford Credit** Get the ride you want. Whether you plan to lease or finance, you'll find the choices that are right for you at Ford Credit. Ask your Ford Dealer for details or check us out at [www.fordcredit.com](http://www.fordcredit.com).

**Ford Motor Company Insurance Services** Choose the insurance program that's designed for your vehicle — Ford Motor Company Insurance Services. Our program helps you receive the rates and service you deserve. Call 1-877-367-3847 or visit us at [www.fordvip.com](http://www.fordvip.com) for a no-obligation quote. Insurance offered by American Road Services Company (in CA, American Road Insurance Agency), a licensed agency and subsidiary of Ford Motor Company.



For a purchase or lease, the Ford **Extended Service Plan (ESP)** gives you "Peace-of-Mind" protection designed to cover key vehicle components and protect you from the cost of unexpected repairs. Ask your dealer for an ESP backed by Ford Motor Company and honored at all Ford dealerships.

## 2006 FORD F-150



**J.D. POWER AND ASSOCIATES:  
"HIGHEST RANKED LIGHT-DUTY FULL-SIZE PICKUP  
IN INITIAL QUALITY" 2005**

### **BEST-IN-CLASS**

- F-SERIES: BEST-SELLING TRUCKS FOR 28 YEARS
  - BEST-IN-CLASS TOWING CAPACITY
  - BEST-IN-CLASS PAYLOAD
  - BEST-IN-CLASS CARGO BOX VOLUME
  - BEST-IN-CLASS INTERIOR VOLUME IN REGULAR CAB AND SUPERCAB
  - BEST SELECTION OF MODELS, TRIM AND PICKUP BOX CONFIGURATIONS
- ONLY OUTBOARD-MOUNTED REAR SHOCKS

### **SAFETY BESTS**

- INSURANCE INSTITUTE FOR HIGHWAY SAFETY  
"BEST PICK FRONTAL" CRASH RATING
- NATIONAL HIGHWAY TRAFFIC SAFETY ADMINISTRATION  
5-STAR FRONTAL CRASH TEST RATING,  
2005 DRIVER AND RIGHT-FRONT PASSENGER

### **FIRST-IN-CLASS**

- FIRST-AND-ONLY 4-DOOR REGULAR CAB
  - FIRST WHEEL-TORQUE-BASED ELECTRONIC THROTTLE CONTROL
  - 5.4L TRITON® – ONLY 3-VALVE V8 ENGINE
    - FIRST TAILGATE ASSIST™
- FIRST-AND-ONLY OVERHEAD RAIL MODULAR INTERIOR STORAGE SYSTEM
- FIRST-AND-ONLY SUPERCAB REAR-DOOR POWER WINDOWS

For more information, go to [www.fordvehicles.com](http://www.fordvehicles.com)

