



2006

FOCUS



Credibility makes for appreciation. Case in point: Ford Focus. It's been getting praise of the highest order right out of the chute. *Car and Driver* awarded Focus a 10Best badge 5 years straight.* And for 4 years in a row,** Focus has been recommended as a Best Buy by *Consumer Guide*® Automotive.

The accolades won't stop anytime soon, especially with attention turning to this year's eye-poppin', newly available Street Appearance Package (shown here, fascia-to-fascia). Standout tuner looks – incorporated front and back – scream, "Playin' loud!" No doubt, that thrill is tenfold when you're the one behind the wheel.

SERIOUS STREET CRED



In this pic: Focus ZX4 ST in Infra-Red (above) and CD Silver Metallic (right), both showing off the all-new Street Appearance Package #1 – available only on SE/SES/ST for ZX3/ZX4/ZX5. Includes unique body-color front fascia with fog and side marker lamps, molded-in-black grille, and lower air deflector; unique body-color rear fascia with molded-in-black diffuser insert; rear spoiler; and bright exhaust tip.

*2000-2004. All Focus models. **2001-2004 Focus models.



BUILT FOR THE ROAD AHEAD.
www.fordvehicles.com

WHAT'S IN A REPUTATION

Sweet looks	3
Euro performance	5
Enviro power	7
Class-best volume	11
Personal Safety System®	15
Bona fide accessories	17
Specs	19





L TO R: FOCUS ZX4 SES - PITCH BLACK, FOCUS ZXW SES - CD SILVER METALLIC, FOCUS ZX5 SES - CD SILVER METALLIC, FOCUS ZX3 SES - CD SILVER METALLIC; ALL WITH AVAILABLE EQUIPMENT

WWW.FORDVEHICLES.COM

STYLIN'

SET OF CHOICES

Ford Focus offers you some of the most substantial, head-turning body styles in its class. Not to mention the best selection. Sweeping arcs meld with crisp creases to form an arresting air of refinement others lack. This fresh, European-influenced design is highlighted with muscular fenders and exudes a drive-me-with-gusto attitude. The crowning touch is a diamond-patterned grille flanked by crystalline headlamps.

One Focus model in particular makes no bones about its thrill-a-minute intent: the performance-packed ZX4 ST Sedan. Under the hood is a 151-hp Duratec engine that takes its hi-revvin' cues from a short-throw 5-speed on the floor. The ST's racing-motivated suspension is deftly stiffened: its chrome-tipped exhaust is aggressively tuned; 16" aluminum wheels are precision-machined; a rear wing spoiler is decklid-mounted; and the leather-wrapped shifter and steering wheel are red-stitched. Anti-lock brakes further boost your handling bravado. In sum, it's a blast.



S/SE/SES CUES

- Black sideview mirrors
- Chromed grille surround
- Black mesh grille center
- Fog lamps with black surrounds (standard on SES, available on SE)
- Black door handles

S SERIES (ZX3/ZX4/ZX5)

European-inspired suspension, 5-speed manual transmission, AM/FM stereo/single-CD player with MP3 capability, fixed-intermittent wipers, rear window wiper on ZX3, ZX5 and ZXW

SE SERIES (ZX3/ZX4/ZX5/ZXW)

S content, plus power windows and locks, keyless entry, air conditioning, front center armrest, map lights

SES SERIES (ZX3/ZX4/ZX5/ZXW)

SE content, plus enhanced European suspension, fog lamps, overhead console with storage bin, tachometer, tilt/telescoping leather-wrapped steering wheel with speed control

ST SERIES (ZX4 EXCLUSIVE)

SES content, plus performance-tuned suspension, chrome-tipped exhaust, 16" 5-spoke machined-aluminum wheels, sport bucket seats, leather-wrapped steering wheel and shift knob with red contrast stitching



ST CUES

- Color-keyed, power heated sideview mirrors
- Color-keyed grille surround
- Satin-alloy mesh grille center
- Fog lamps with silver surrounds
- Blacked-out lower rear fascia
- Color-keyed door handles



EUROPEAN-INSPIRED SUSPENSION

Every new Focus begins with MacPherson struts up front and Control Blade trailing arms in back. The 4-wheel independent design eagerly absorbs bumps and delivers exceptional maneuverability. It's the very soul of some downright impressive European-born and -bred manners.

ENHANCED EUROPEAN SUSPENSION

Strike an even greater balance of comfortable ride and dynamic handling – with more aggressive cornering ability and increased steering feel. A substantial 20-mm rear stabilizer bar creates a marked decrease in body lean. Standard on ZXW SE and all SES models.

PERFORMANCE-TUNED SUSPENSION

Exclusive to the ZX4 ST, this configuration is the pinnacle of the Focus driving experience. It gets the stiffest struts and shocks in the lineup, with higher front spring rates. Less overall rebound means ZX4 ST achieves the sharpest level of crisp control and steering precision.

FOCUS ZX3 SES _ SCREAMING YELLOW WITH AVAILABLE EQUIPMENT

WWW.FORDVEHICLES.COM

RACING ROOTS



Since its 1999 World Rally Championship (WRC) debut on the snow-and-ice-patched alpine roads in Monte Carlo, Focus has been a mainstay of Ford Racing. The grueling, 11-month rally season pits Focus against the clock in more than a dozen countries, on 4 continents – where courageous drivers do battle for 3 days at a clip in many of the harshest environments on the planet. You name it, the Focus WRC has been there and done that: conqueror of blinding sandstorms, punishing gravel, freezing blasts, boiling temps and tons more.

Meaning every 2006 Focus production car has benefited from over half a decade of extreme real-world testing. When the forecast calls for crummy conditions, get on the road and whoop it up. On the SCCA (Sports Car Club of America) Pro Racing circuit, Focus is decked out in Air Force Reserve red, white and blue. Anything but reserved, this baby flies. Its intense driving dynamics are put to the test weekly, battling foes along straightaways and in the corners on tracks across the U.S. *Let freedom zing.*



DO A PIRELLI PEEL

Low-profile 16" Pirelli tires aren't just all-season, they're all action. And they're standard issue on the ZX4 ST, along with the ZX3/ZX4/ZX5 SES Series. These steel-belted radials boast stiff sidewalls for less flex when twists and turns beckon. (What makes Pirelli so primo? A fab track record. Pirelli is linked to the evolution of motorsports, holding a rich collection of victories – first taste coming in the 1907 Peking-Paris Rally.)





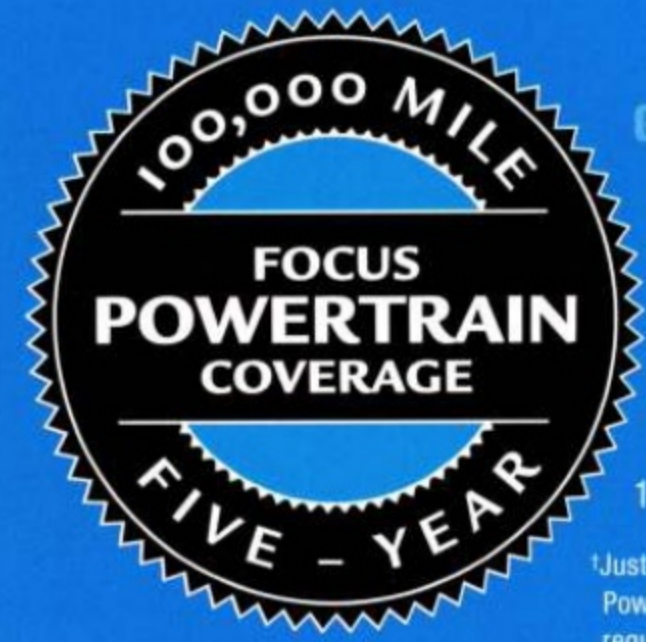
FOCUS ZX5 SES - SONIC BLUE METALLIC

RESPONSIBLE REVS

You don't have to sacrifice power to reduce pollution. The aluminum-block Duratec engines for Focus were recently revamped to be more energetic, more efficient, more eco-responsible* and even more ear-pleasing than ever. Every Duratec is equipped with chain-driven dual overhead cams (DOHC), 16 valves, 4 cylinders and sequential multi-port fuel injection. All helping to ensure Focus remains well above average in the *EPA Green Vehicle Guide*.

*Based on 2004 2.0L vs. 2005 2.0L Duratec 20 DOHC engine emissions. **Standard on S/SE/SES models in CA, MA, ME, NY and VT; available on retail orders in AZ, CT, NH, NJ, NV, OR, PA and RI.

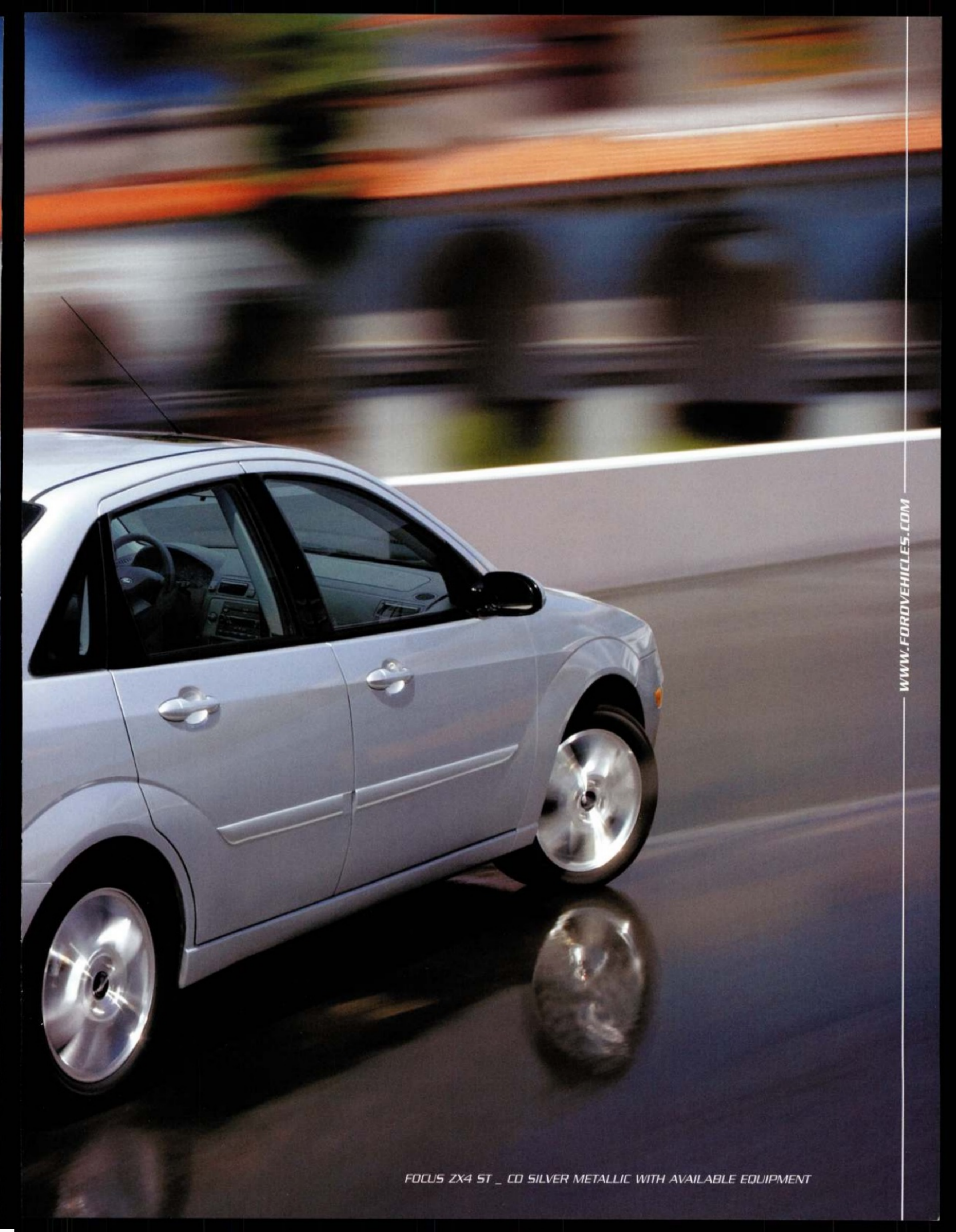
- 2.3L Duratec 23.** Unleashes 151 hp and 154 lb.-ft. of torque, while issuing only 1/4 of the smog-inducing particles allowed for an Ultra Low Emissions Vehicle (ULEV). It's mated to a short-throw 5-speed manual, and it's exclusive to ZX4 ST.
- 2.0L Duratec 20.** Produces 136 hp and 136 lb.-ft. of torque. Standard on all models (except ZX4 ST), it yields a mere 1/5 of the smog-forming emissions of a ULEV.
- 2.0L Duratec 20E PZEV (Partial Zero Emissions Vehicle).** Delivers 130 hp and 129 lb.-ft. of torque, maintaining zero fuel system evaporative discharge and meeting Super Ultra Low Emissions Vehicle requisites.**



GOOD FOR 4 TRIPS AROUND THE WORLD¹

Quality built. Quality backed. In addition to the New-Vehicle Bumper-to-Bumper Limited Warranty, Focus comes with exclusive 100,000-mile/5-year Powertrain Coverage¹ – from the engine and transmission to the entire driveline. Towing and roadside assistance are included, and any remaining coverage is fully transferable to the next lucky owner. On top of it all, some key Duratec components require less maintenance to begin with: 150,000-mile air filter, 150,000-mile valve adjustment, and 100,000-mile platinum-tipped spark plugs (part of the 100,000-mile tune-up interval).²

¹Just be sure to take 'em all within your first 5 years of ownership. ²100,000-mile/5-year Powertrain Extended Service Plan. Powertrain Limited Warranty in Florida. A deductible applies. See dealer for details. ³Under normal driving conditions with regular fluid and filter changes.



WWW.FORDVEHICLES.COM

FOCUS ZX4 ST _ CD SILVER METALLIC WITH AVAILABLE EQUIPMENT

SOUND DESIGNED BY **SONY**

A big-bang-boomin' 500 watts of peak power and Digital Sound Processing capabilities highlight this available Audiophile® System*. Sony sound techs acoustically tuned it all: AM/FM stereo with 6-disc in-dash CD changer and MP3 capability, 4 coax speakers with neodymium rare-earth magnets, and 8" subwoofer with a large 2.4-lb. magnet and separate 170-watt, 2-channel amp for exceptionally deep, crisp bass.

*Available on SE, SES (except ZX4) and ST models.



CD POD

Here's a ready-made place – directly below the instrument panel – to store 6 of your love CDs, including their full-size jewel cases.

For sure, Focus ZX4 ST aims to please. Rap or rock to the laser-clear sounds of a CD player that's MP3 capable. Pump up the volume in a snap – an available 6-disc in-dash CD changer includes audio switches parked on the column of the leather-wrapped steering wheel that's jazzed with bright red stitching and speed-control functions. A full set of quick-read, jet-black gauges are surrounded smartly in silver, while a slick metal-mesh finish on the center stack grooves in step with this performance-purposed cockpit.

SIZZLIN' MIX



FOCUS ZX4 ST _ WITH AVAILABLE EQUIPMENT AND LEATHER TRIM



SEEN' RED

ZX4 ST's leather-wrapped shifter is red-stitched too.



FOCUS ZX4 ST _ CHARCOAL CLOTH WITH BLACK/RED SPORT INSERTS AND AVAILABLE EQUIPMENT

CHECK OUT THESE DIGS

Clubbing, camping or carpooling, you and 4 friends will be lookin' real fine in the red-hot ZX4 ST. Charcoal cloth sport buckets are splashed with a mesmerizing red-and-black diamond pattern, mirroring the front-door accents. Or splurge for the charcoal leather-trimmed seating option that comes with Preferred Suede® inserts. The height-adjustable, leather-trimmed front seats are available heated also – pretty rare for this class.

Honda Civic, Toyota Corolla, Chevy Cobalt and Saturn Ion are taking their hats off to Focus: Outstanding interior volume on ZX4, ZX3, and ZXW is among best-in-class. Command Seating™ up front and a theater-style setup in back provide super visibility and ease of entry/exit. Ensuring every bit of living room remains people-friendly instead of package-filled, the Focus ZX4 offers more trunk space than the Civic/Corolla/Cobalt/Ion crowd; trunk hinges never bar the way, and there's more than enough capacity for a pair of stuffed, full-size travel bags standing side by side. Make plans, not compromises.



NO PROBLEM

If you've got extra-long goods to tote, Focus is more than happy to accommodate with a 60/40 split-fold rear seat.



FINE TUNIN'

Available on SE/SES/ST models: The steering wheel not only tilts up and down for you, it telescopes in and out for perfect positioning.



OUTTA SIGHT

The available overhead storage console is an ideal spot for sunglasses. Focus provides you with up to 11 different storage areas (depending on model).

You can't feel really good until you feel truly safe. That's why the front-wheel-drive Focus comes with a heap of protection, in assorted forms. The Personal Safety System® calculates various factors in a heartbeat to keep front-seat occupants out of harm's way in certain frontal collisions. A sophisticated "safety cell" passenger surround that's innate to each Focus is reinforced with ultra-high-strength steel crossmembers. And since crossing your fingers won't stop you from being stranded, the battery saver shuts off interior lights after 20 minutes if you mistakenly leave any on, or by chance leave a door ajar. *Feel even safer reading on.*

IN CASE OF EMERGENCY

ANTI-THEFT SYSTEMS

The SecuriLock® passive anti-theft system that comes standard on Focus is designed to help prevent the engine from starting unless your coded ignition key is used. An available perimeter alarm system monitors the doors, hood and decklid for any tampering.

PERSONAL SAFETY SYSTEM

The Personal Safety System helps protect both you and your front passenger. It combines 8 advanced technologies: dual-stage front airbags, a restraint control module, safety belt energy-management retractors and pretensioners, Front-Passenger Sensing System, and sensors for crash severity, safety belt usage and driver's-seat position. The whole Personal Safety System does its thing in milliseconds – instantly applying the best protective measures.



ANTI-LOCK BRAKE SYSTEM (ABS)

Standard on ST and available on all other Focus models, 4-channel ABS means the system can brake all 4 wheels independently for more accurate control. It's designed to help you maintain greater steering command during hard stops.

FRONT-SEAT SIDE AIRBAGS

Available on every Focus, these airbags offer an extra margin of head and chest protection for you and your front passenger during certain side impacts. The bags inflate from the outboard side of each front seat for optimal positioning.



"SAFETY CELL" CONSTRUCTION

The unitized body of Focus is built to provide crash energy-management in the event of an accident. Front and rear crumple zones progressively deform to help absorb the impact and reduce the amount of collision forces reaching the passenger compartment.

FRONT-PASSENGER SENSING SYSTEM

A major piece of the always-on-guard Personal Safety System for Focus, this hi-tech occupant-sensing system determines if the front-passenger's airbag should be activated or not. Safety belt tension and front-passenger weight are measured to detect whether someone big, someone small, or no one at all is in the front-passenger's seat. Accordingly, the airbag is at-the-ready or disabled to provide the most appropriate level of protection.

CENTER SAFETY BELT & LATCH

All 5 seating positions are engineered with the added assurance of 3-point safety belts. For uniform child-safety seat hookup, Focus is equipped with LATCH (lower anchors and tether anchors for child-safety seats). When the top tether anchor and lower anchor combo is used, safety belts aren't necessary to install the car seat.



fordaccessoriesstore.com



TRIPTUNES™ AUDIO PLAYER INTERFACE

Connect most portable audio, CD and cassette players to the radio: Start jammin' through Focus's speakers.



CUSTOM SPLASH GUARDS

Guard against mud, snow and ice. Durable splash guards are embossed with the Ford oval logo.



CARGO SECURITY SHADE

Conceal belongings with this heavy-duty vinyl shade. Mounts behind rear seat above the cargo area.



VEHICLE SECURITY SYSTEMS

Protect your Focus with a state-of-the-art protection system that offers a full range of security features, complete with pocket-sized transmitters.



MID-WING SPOILER

Designed for the mid-wing of 3- and 5-door Focus models, this spoiler is available in select exterior colors.



ELLIPTICAL CROSSBARS FOR O.E. RACKS

Set of 2 crossbars allows the mounting of select carriers with adapters for elliptical carriers.



FOG LAMPS

Optimize vision and safety: Fog lamps mount to the lower fascia of the front bumper with original equipment design that ensures proper fit.



ALL-WEATHER VINYL FLOOR MATS

The deep grooves and raised ridges in these heavy-duty, stay-put mats catch and hold snow, slush and mud.



CHROME EXHAUST TIP

Slips over the end of the tailpipe. Constructed of heavy-duty, corrosion-resistant, chrome-plated stainless steel for long life.



WHEEL LOCKS

For added protection against theft, replace one lug on each wheel with one of these locks.

SEE THE COMPLETE CATALOG OF GENUINE FORD ACCESSORIES.

There's a whole catalog of great choices to help you personalize your new Focus, and it's available at your Ford Dealer today. Engineered by Ford for excellent fit and long-wearing durability, Genuine Ford Accessories also know how to put the fun in functional. And if installed by your Ford Dealer at time of purchase, they're backed by a 3-year/36,000-mile warranty.* Pick up your Genuine Ford Accessories catalog today or view it online at www.fordvehicles.com.

*See your dealer for Limited Warranty details.

TRICK IT OUT



LINEUP LOWDOWN

S (ZX3/ZX4/ZX5)



Standard S content: 2.0L I-4 Duratec 20 or 20E PZEV* engine • 5-speed manual transmission • 15" steel wheels with 9-spoke wheel covers • P195/60R15 all-season tires • Front disc and rear drum brakes • Black grille with chromed surround • Black manual sideview mirrors • Black exterior door handles • Black rear decklid/liftgate molding • AM/FM stereo/single-CD player with MP3 capability and with speed-sensitive volume control • Intermittent windshield wipers • Black instrument cluster surround with black-faced gauges • Silver-metallic instrument panel center stack on ZX3 and ZX5; black on ZX4 (shown)



SE (ZX3/ZX4/ZX5/ZXW)



All S content, plus: 15" steel wheels with 6-spoke wheel covers • Air conditioning • Power Group including power windows, power locks, keyless entry with 2 key fobs, and power sideview mirrors • Variable-intermittent windshield wipers • Front center armrest with storage • Black instrument panel center stack on ZX4 and ZXW; silver-metallic instrument panel center stack on ZX3 and ZX5 (shown)



SES (ZX3/ZX4/ZX5/ZXW)



All SE content, plus: 16" 5-spoke aluminum wheels and Pirelli P205/50R16 all-season tires on ZX3, ZX4 and ZX5 • 15" multi-spoke aluminum wheels on ZXW • Body-color bodyside moldings • Body-color rear decklid/liftgate molding • Fog lamps with black surrounds • Speed control • Tilt/telescoping steering column with leather-wrapped steering wheel • Overhead storage console with front map/reading lights, and storage bins for sunglasses and garage door opener • Tachometer • Black instrument cluster surround with grey-faced gauges • Silver-metallic finish instrument panel center stack on ZX3 and ZX5; two-tone finish on ZX4 and ZXW (shown)



ST (ZX4)



All ZX4 SES content, plus: 2.3L I-4 Duratec 23 engine • Unique 16" 5-spoke machined-aluminum wheels • Performance-tuned suspension • 4-wheel power disc brakes • Anti-lock Brake System (ABS) • Satin-alloy grille with body-color surround • Power, heated, body-color sideview mirrors • Body-color door handles • Ground effects on rear fascia • Blacked-out lower rear fascia • Fog lamps with silver surrounds • Chrome-tipped exhaust • Sport-tuned exhaust sound • Sport front bucket seats • Black leather-wrapped steering wheel and shifter knob with red contrast stitching • Silver instrument cluster surround with black-faced gauges • Dark grey/metal-mesh finish instrument panel center stack (shown)



SPECS

STANDARDS

MECHANICAL

100,000-mile tune-up interval**
5-speed manual transmission
Compact spare tire
European-Inspired Suspension — Front: independent MacPherson strut, stabilizer bar; rear: independent Control Blade
Front-wheel drive
Maintenance-free battery
Power front disc/rear drum brakes
Power rack-and-pinion steering

SAFETY/SECURITY

Personal Safety System* for driver and front passenger — With dual-stage airbags, safety belt pretensioners, energy-management retractors, safety belt usage sensors, driver's-seat position sensor, crash severity sensor, Front-Passenger Sensing System (FPSS) and restraint control module
Battery saver
Belt-Minder® safety belt reminder
Child-safety rear door locks (n/a on 3-door models)
Emergency trunk release (ZX4)
Headlamps-on reminder
LATCH — Lower anchors and tether anchors for child-safety seats (rear outboard positions)
Low-fuel warning light
Safety belts — 3-point for all 5 seating positions
"Safety cell" unitized body construction
SecuriLock® passive anti-theft system
Shoulder belt height adjusters — Front positions
Side-intrusion door beams

SEATING

5-person seating
60/40 split-fold rear seat with flip-up rear-seat cushion
Height-adjustable driver's seat

INTERIOR

AM/FM stereo/single-CD player with MP3 capability, clock and 4 speakers
Assist handles — Front and rear overhead
Center floor console — Full-length with pen storage and cupholders (2 front, 1 rear)
Courtesy lights with theater-dimming feature
Front doors with map pockets and integrated bottle holders
Interior decklid/liftgate release
Map pocket — Front-passenger seatback
Power point — Front
Trip odometer
Visor vanity mirrors — Driver and front-passenger

EXTERIOR

Bumpers — Body-color, 5-mph impact-absorbing
Headlamps — Aerodynamic halogen
Rear-window defroster
Solar-tinted glass
Windshield wipers — Front: intermittent; rear: wiper/washer (n/a on ZX4 models)

MEAN, GREEN ENGINES

	2.0L DURATEC 20	2.0L DURATEC 20E PZEV*	2.3L DURATEC 23
Horsepower (hp @ rpm)	136 @ 6000	130 @ 6000	151 @ 5750
Torque (lb.-ft. @ rpm)	136 @ 4250	129 @ 4000	154 @ 4250

EPA-ESTIMATED FUEL ECONOMY

TRANSMISSION	2.0L DURATEC 20	2.0L DURATEC 20E PZEV*	2.3L DURATEC 23
5-speed manual (mpg)	26 city/34 hwy.	26 city/34 hwy.	22 city/31 hwy.
4-speed automatic (mpg)	26 city/32 hwy.	26 city/32 hwy.	n/a

**Under normal driving conditions with routine fluid and filter changes. *Always wear your safety belt and secure children in the rear seat. †Requires ABS and tachometer. ‡Overhead console with storage replaced with map lights only when power moonroof is ordered. †Late availability on ZX3 and ZX5.

Preferred Suede is a registered trademark of Miliken & Company. Audiophile is a registered trademark of Audiophile, Inc.

FEATURES & OPTIONS

	S	SE	SES	ST
MODELS				
	● ● ●	● ● ● ●	● ● ● ● ●	● ● ● ● ● ●
ZX3 — 3-door hatchback	● ● ●	● ● ● ●	● ● ● ● ●	● ● ● ● ● ●
ZX4 — 4-door sedan	● ● ● ●	● ● ● ● ●	● ● ● ● ● ●	● ● ● ● ● ● ●
ZX5 — 5-door hatchback	● ● ● ● ●	● ● ● ● ● ●	● ● ● ● ● ● ●	● ● ● ● ● ● ● ●
ZXW — 5-door wagon	—	—	—	—
MECHANICAL				
2.0L Duratec 20 DOHC engine	● ● ● ●	● ● ● ● ●	● ● ● ● ● ●	● ● ● ● ● ● ●
2.0L Duratec 20E PZEV DOHC engine†	—	—	—	—
2.3L Duratec 23 DOHC engine	—	—	—	—
15" steel wheels with 9-spoke wheel covers	● ● ● ● ●	● ● ● ● ● ●	● ● ● ● ● ● ●	● ● ● ● ● ● ● ●
15" steel wheels with 6-spoke wheel covers	—	—	—	—
15" multi-spoke aluminum wheels (standard on ZXW SES)	—	—	—	—
16" 5-spoke aluminum wheels (standard on ZX3/ZX4/ZX5 SES)	—	—	—	—
16" 5-spoke machined-aluminum wheels	—	—	—	—
P195/60R15 all-season tires (standard on ZXW SES only)	—	—	—	—
Pirelli P205/50R16 all-season tires (n/a on ZXW SES)	—	—	—	—
4-wheel disc brakes	—	—	—	—
Automatic transmission (n/a on ZX3 S)	—	—	—	—
Enhanced European suspension with rear stabilizer bar (also standard on ZXW SE)	—	—	—	—
Performance-tuned suspension with rear stabilizer bar	—	—	—	—
Speed control — Steering wheel-mounted	—	—	—	—
SAFETY/SECURITY				
Anti-lock Brake System (ABS)	—	—	—	—
Front-seat side airbags	—	—	—	—
Perimeter alarm system	—	—	—	—
Traction Control††	—	—	—	—
SEATING				
Heated front seats	—	—	—	—
Leather-trimmed seats	—	—	—	—
Sport seats — Charcoal cloth with black/red sport cloth inserts	—	—	—	—
Sport seats — Charcoal leather-trimmed with Preferred Suede® inserts	—	—	—	—
INTERIOR				
Air conditioning	—	—	—	—
AM/FM stereo/6-disc in-dash CD changer with MP3 capability and secondary audio controls on steering wheel	—	—	—	—
Sound by Sony Audiophile® System/6-disc in-dash CD changer with MP3 capability and secondary audio controls on steering wheel (n/a on ZXW)	—	—	—	—
Instrument cluster with black surround and black gauges	—	—	—	—
Instrument cluster with black surround, grey gauges and tachometer	—	—	—	—
Instrument cluster with silver surround, black gauges and tachometer	—	—	—	—
Leather-wrapped steering wheel	—	—	—	—
Leather-wrapped steering wheel and shifter with red contrast stitching	—	—	—	—
Overhead storage console with front map/reading lights and storage bins for sunglasses and garage door opener	—	—	—	—
Tilt/telescoping steering column	—	—	—	—
EXTERIOR				
Fog lamps	—	—	—	—
Power moonroof‡	—	—	—	—
Power sideview mirrors (heated on ST)	—	—	—	—
Rear decklid spoiler (ZX4 only)	—	—	—	—
PACKAGES				
Convenience Package — Includes speed control and tilt/telescoping steering column	—	—	—	—
Safety Package — Includes Anti-lock Brake System and front-seat side airbags	—	—	—	—
SE Sport Group — Includes 15" multi-spoke aluminum wheels, tachometer, leather-wrapped steering wheel and fog lamps	—	—	—	—
Street Appearance Package #1‡ — Includes unique front fascia with fog lamps, side marker lamps, molded-in-black grille and lower air deflector, unique rear fascia with molded-in-black diffuser insert, unique decklid "rally style" spoiler (ZX4) or unique high-mounted rear wing spoiler (ZX3 and ZX5) and bright exhaust tip	—	—	—	—
Street Appearance Package #2 — Includes unique front fascia with fog lamps, side marker lamps, molded-in-black grille and lower air deflector, unique rear fascia with molded-in-black diffuser insert, bright exhaust tip and SES-style spoiler (ZX4 only)	—	—	—	—
Weather Package — Includes heated seats and heated sideview mirrors	—	—	—	—

● Standard ○ Optional ● Available as part of a package — Not available

*Standard on S, SE and SES models in CA, MA, ME, NY and VT; available on retail orders in AZ, CT, NH, NJ, NV, OR, PA and RI.

Comparisons based on 2005 competitive models, publicly available information and Ford certification data at time of printing. Some features discussed may be optional. Vehicles shown may contain optional equipment. Features shown may be offered only in combination with other options or subject to additional ordering requirements or limitations. Following publication of the catalog, certain changes in standard equipment, options and the like, or product delays may have occurred which would not be included in these pages. Your Ford Dealer is the best source for up-to-date information. Ford Division reserves the right to change product specifications at any time without incurring obligations.

SPECS

INTERIOR TEXTURES



Light Flint Cloth
Standard on ZX3 S,
ZX4 S and ZX5 S



Charcoal Cloth
Standard on ZX3 S
and ZX5 S



Light Flint Cloth
Standard on ZX3 SE and
SES, and ZX5 SE and SES



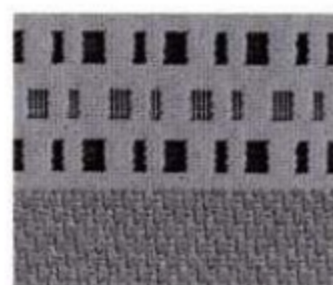
Charcoal Cloth
Standard on ZX3 SE and
SES, and ZX5 SE and SES



Pebble Cloth
Standard on ZX3 S,
ZX4 S and ZX5 S



Light Pebble Cloth
Standard on ZX4 SE and
SES, and ZXW SE and SES



Light Flint Cloth
Standard on ZX4 SE and
SES, and ZXW SE and SES



Charcoal Cloth with
Black/Red Sport Inserts
Standard on ZX4 ST



Light Pebble Leather Trim
Available on ZX4 SES
and ZXW SES



Light Flint Leather Trim
Available on ZX3 SES,
ZX4 SES, ZX5 SES
and ZXW SES



Charcoal Leather Trim
Available on ZX3 SES
and ZX5 SES



Charcoal Leather Trim with
Preferred Suede® Inserts
Available on ZX4 ST

SLICK RIMS



15" Steel Wheel with
9-Spoke Wheel Cover
Standard on ZX3/ZX4/ZX5 S



15" Steel Wheel with
6-Spoke Wheel Cover
Standard on
ZX3/ZX4/ZX5/ZXW SE



15" Multi-Spoke
Aluminum Wheel
Standard on ZXW SE;
Optional on S and SE and
included with optional
SE Sport Group



16" 5-Spoke
Aluminum Wheel
Standard on
ZX3/ZX4/ZX5 SES



16" 5-Spoke
Machined-Aluminum Wheel
Standard on ZX4 ST

LIGHT PEBBLE

LIGHT FLINT

CHARCOAL

ZX3/ZX5

- ● Cloud 9 White
- ● Infra-Red*
- ● Dark Toreador Red Metallic**
- ● Light Tundra Metallic*
- ● Sonic Blue Metallic*
- ● CD Silver Metallic
- ● Liquid Grey Metallic*
- ● Pitch Black
- ● Screaming Yellow**

ZX4/ZXW

- ● Cloud 9 White
- ● Pueblo Gold Metallic**
- ● Infra-Red*
- ● Dark Toreador Red Metallic**
- ● Light Tundra Metallic*
- ● Sonic Blue Metallic*
- ● CD Silver Metallic
- ● Liquid Grey Metallic*
- ● Pitch Black

ZX4 ST

- ● Infra-Red
- ● CD Silver Metallic
- ● Liquid Grey Metallic
- ● Pitch Black

*Not available on S models.

**New for 2006. All combinations not available on all trim levels.

EXTERIOR SHADES



Cloud 9 White



Pueblo Gold Metallic



Infra-Red



Dark Toreador Red Metallic



Light Tundra Metallic



Sonic Blue Metallic



CD Silver Metallic



Liquid Grey Metallic



Pitch Black



Screaming Yellow

Ford uses clearcoat paint for beauty and protection. Colors shown are representative only. Not all colors are available on all models. See your dealer for actual paint/trim options.

New-Vehicle Limited Warranty

We want your Ford Focus ownership experience to be the best it can be. So under this warranty, your new vehicle comes with 3-year/36,000-mile Bumper-to-Bumper Coverage, 5-year/50,000-mile Safety Restraint Coverage, and 5-year/unlimited-mile Corrosion (Perforation) Coverage — all with no deductible. Please ask your Ford Dealer for a copy of this limited warranty.



Get the ride you want. Whether you plan to lease or finance, you'll find the choices that are right for you at Ford Credit. Ask your Ford Dealer for details or check us out at www.fordcredit.com.



Choose the insurance program that's designed for your vehicle — Ford Motor Company Insurance Services. Our program helps you receive the rates and service you deserve. Call 1-877-367-3847 or visit us at www.fordvip.com for a no-obligation quote. Insurance offered by American Road Services Company (in CA, American Road Insurance Agency), a licensed agency and subsidiary of Ford Motor Company.



For a purchase or lease, the Ford Extended Service Plan (ESP) gives you "Peace-of-Mind" protection designed to cover key vehicle components and protect you from the cost of unexpected repairs. Ask your dealer for an ESP backed by Ford Motor Company and honored at all Ford dealerships.

2006 FORD FOCUS



"Best Buy" 4 Years in a Row*

Consumer Guide® Automotive

"10Best" 5 Years Straight**

Car and Driver



"We ... came away impressed by its blend of deft dynamics and supple ride."

Motor Trend

"The Focus is a wonderful small car that's fun to drive, frugal with fuel and offered in such a wide variety of configurations it would be hard not to find one that suits your needs."

Edmunds.com

FORD FOCUS: IT BEGS TO BE DRIVEN.

- A trio of European-infused suspensions provides exceptional maneuverability and outstanding comfort
- 3 torque-happy powerplants – 2.3L Duratec 23, 2.0L Duratec 20 and 2.0L Duratec 20E PZEV – maximize performance
 - Global I-4 engine technology minimizes pollution
 - Only vehicle in its class with an available Audiophile® System that pumps out Sound by Sony®
 - Versatility of 4 decidedly distinct models
 - Up to 11 different storage solutions
 - Bright red stitching is an eye-catching exclusive inside the red-hot ZX4 ST
- On ZX4, ZX3 and ZXW, interior volume ranks among best-in-class
 - Sophisticated "safety cell" construction deflects crash energy away from the passenger cabin
 - Personal Safety System® reacts in mere milliseconds
- 100,000-mile/5-year Powertrain Coverage† backs the quality build

*2001-2004 Focus models. **2000-2004, all Focus models. †100,000-mile/5-year Powertrain Extended Service Plan. Powertrain Limited Warranty in Florida. A deductible applies. See dealer for details.

For more info, go to www.fordvehicles.com



BUILT FOR THE ROAD AHEAD.

© 2005 Ford Motor Company 06FOCCAT
Litho in USA on recycled paper (20% post consumer)