

06 LINCOLN NAVIGATOR



LINCOLN



Lincoln Navigator Ultimate in Cashmere Tri-Coat (top) and Silver Birch Metallic (bottom) with available equipment.

Powerful presence. The uncompromising luxury of Lincoln Navigator is artfully expressed via its stunning style and impressive array of innovative power features.



Lincoln Navigator's clean, modern appearance confidently commands attention everywhere you travel. And its luxurious use of technology gives you the freedom to live your life to its fullest.

Navigator Ultimate's standard, class-exclusive, power-fold 3rd-row seats disappear at the touch of a button to create a flat loadfloor. Press another button and watch as Ultimate's standard power liftgate raises or lowers on its own. Loading is easy, even with your hands full.

Standard on every Navigator, power-adjustable brake and accelerator pedals provide 3" of travel and include a memory feature that recalls the settings.

Large, power-folding, heated sideview mirrors with integrated turn signals and security approach lamps are another of Navigator's exceptional standards.

Another class-exclusive, Navigator Ultimate's available power running boards automatically glide out when the door is opened and retract when the door is closed.

lincoln.com

- 5.4L 3-Valve V-8 Engine
- 6-Speed Transmission
- 8600-lb. Towing Capacity*
- Load-Leveling Suspension
- Independent Suspension
- Speed-Sensitive Steering



Lincoln Navigator Ultimate in Light Tundra Metallic with available equipment.

*When properly equipped.

4

Refined strength. Make any road your own with the unmistakable confidence of Lincoln Navigator's 300-hp V-8 engine, 4-wheel independent suspension and speed-sensitive steering.

Start your travels on a positive note with the impressive off-the-line acceleration of Navigator's 5.4L SOHC 3-valve V-8 engine and 6-speed automatic transmission. The robust V-8 produces an impressive 300 hp, plus 365 lb.-ft. of torque, empowering you to pass with confidence and tow heavy loads with ease. In fact, properly equipped models allow you to tow up to 8600 lbs. – which should be more than adequate to get you cruising the big water.

Each time you shift Navigator into Park and shut off the engine, the 4-corner load-leveling air suspension automatically lowers the vehicle 1" to ease your exit and re-entry. It also levels the ride according to differing payload and towing demands – and in off-road 4x4 conditions – to ensure a more comfortable journey.

At the heart of its impeccable road manners, Navigator's first-in-class 4-wheel independent suspension allows each wheel to handle bumps in the road with minimal effect on the other wheels. You'll find Navigator surprisingly easy to maneuver, thanks in part to its standard speed-sensitive, variable-assist power rack-and-pinion steering. When you're traveling at low speeds, it automatically adjusts to help you steer into tight spaces. At highway speeds, it adjusts to provide a more precise response. In Lincoln Navigator, all roads lead to luxury.



lincoln.com

5

INTERIOR

Luxurious Seating
Heated and Cooled Seats*
Elegant Materials
Dual-Zone Climate Control



True to its Lincoln lineage, Navigator delivers unsurpassed luxury, starting with available front seats that are cooled as well as heated. Standard on Navigator Ultimate, these class-exclusive seats offer 3 different warm and cool settings. Navigator's standard 7-passenger seating configuration gives 2nd-row passengers dual reclining seats and a large floor console, while the available 8-passenger configuration features a 2nd-row 40/20/40 split-folding bench seat instead. Either way, those in the 2nd row can adjust the rear cabin climate via a separate set of fan and temperature controls. Navigator's 3rd row features a full 36.3" of leg room, so all passengers can ride in comfort.

Lincoln Navigator Ultimate in the standard 7-passenger seating configuration with 1st- and 2nd-row leather-trimmed bucket seats in Camel.

*Available on front seats only.



Only the finest materials are selected to create this warmly inviting sanctuary inside Navigator. Premium leather, rich American walnut burl wood, smooth satin-nickel accents and crisp, white LED lighting grace its interior with a blend of traditional sophistication and modern elegance that are uniquely Lincoln. In addition to its stunning style, you'll find each control is artfully designed for comfort and ease of use. Navigator's Dual-zone Electronic Automatic Temperature Control further pampers you and your front passenger by automatically maintaining your separately selected temperature settings on either side of the front cabin.

Lincoln Navigator Ultimate in Camel with American walnut burl wood accents.

9

7

ENTERTAINMENT

- Audio/Navigation System
- Audiophile® Sound System
- Dual-Media System
- Rear-Seat Entertainment



Available Lincoln Soundmark® THX™ Certified Audio and Navigation System with 6.5" color LCD touch screen.



Theater-quality sound.

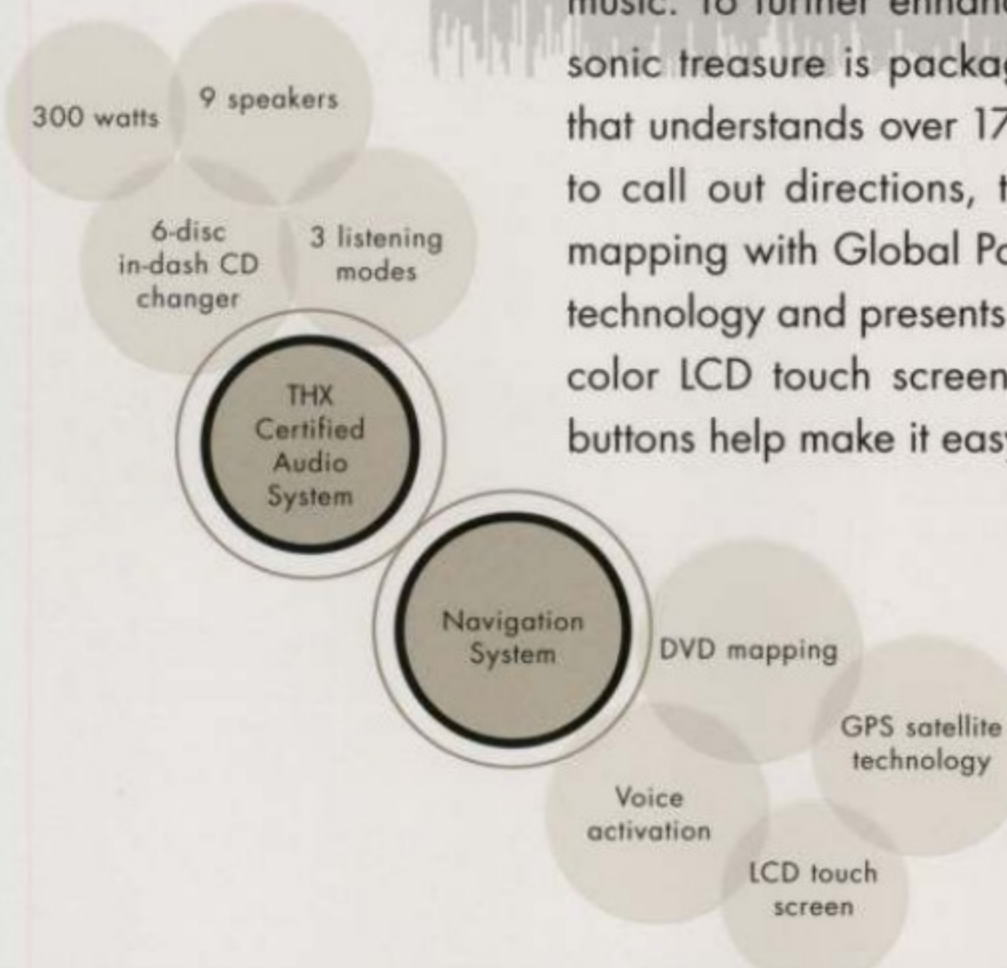
The available first-in-class Lincoln Soundmark THX Certified Audio and Navigation System ensures the finest-quality sound – just like THX technology at the cinema.

THX engineers actually analyzed the acoustic properties of Navigator's interior as they fine-tuned the output of the available Lincoln Soundmark® THX™ Certified Audio and Navigation System. Then they gave it 3 different listening modes to deliver the best-possible sound to each seat, according to how many people are inside. A 6-disc in-dash CD changer, 9 speakers and 300 watts of power provide the sound. All that's left is for you to choose the music. To further enhance your travel experiences, this sonic treasure is packaged with a Navigation System that understands over 170 voice commands and is able to call out directions, turn by turn. It combines DVD mapping with Global Positioning System (GPS) satellite technology and presents high-quality graphics on a 6.5" color LCD touch screen. Map, Destination and Menu buttons help make it easy to use.

The standard Lincoln Soundmark Audiophile® Sound System (below) includes a 6-disc in-dash CD changer with MP3 capability, speed-compensated volume control, high-power amplifier and 9 speakers. For those who prefer a cassette player and a single-CD player with MP3 capability, there is also a Dual-Media Sound System available.

SIRIUS Add SIRIUS Satellite Radio* service to the Soundmark THX Certified System or the Audiophile Sound System to receive over 120 channels of coast-to-coast music, news, sports and entertainment.

Passengers can play their own CDs/MP3s, DVDs and video games on the available Rear-Seat DVD Entertainment System (below). It even includes a remote control and 2 sets of wireless headphones to help maintain the peace.



lincoln.com

*See your Lincoln Mercury Dealer for SIRIUS installation and activation details.

CAPABILITY

AdvanceTrac® with Roll Stability Control
Control Trac® 4WD



Lincoln Navigator Ultimate in Silver Birch Metallic with available equipment.

Confident assurance. In our quest to provide you with enhanced control in adverse conditions, we made AdvanceTrac with Roll Stability Control standard on every Lincoln Navigator.

Lincoln Navigator is the first vehicle in its class* to feature AdvanceTrac® with Roll Stability Control. This innovative system helps deliver the peace of mind and confidence every driver desires. AdvanceTrac is an electronic stability enhancement system that improves control on slippery surfaces like snowy, muddy, wet or gravel roads. Roll Stability Control detects potentially unstable situations and quickly engages AdvanceTrac to help you maintain control.

There are 4 major components of this integrated system. First, an Anti-lock Brake System (ABS) provides confident stopping power. Second, the traction control system gives you amazing grip. Third, the yaw control feature helps you avoid skidding and fishtailing. And, fourth, Roll Stability Control utilizes a gyroscopic sensor to monitor vehicle-roll motion and automatically engages AdvanceTrac

as needed. Some of the real-world situations in which AdvanceTrac with Roll Stability Control can help include: when you're making an emergency maneuver to avoid something in the road; transitioning from a loose surface (like the shoulder) back onto pavement; or simply traveling over uneven surfaces such as in construction zones.

If the ultimate in capability is what you seek, Navigator's available Control Trac® 4-Wheel-Drive (4WD) System is ready to deliver. The system includes 4 modes: high-range 2-wheel-drive (2H) that sends all the torque to the rear wheels; Automatic (A4WD) that sends torque to the wheels with the most grip; high-range 4-wheel-drive (4H) for use in off-road or low-traction situations; and low-range 4-wheel drive (4L), which significantly multiplies engine torque to the wheels for extreme off-road conditions and very-low-speed towing.



Remember that even advanced technology cannot overcome the laws of physics. It's always possible to lose control of a vehicle due to inappropriate driver input for the conditions. *Full-size Luxury SUV.

SECURITY/SAFETY

- 5-Star Frontal Crash Rating
- Personal Safety System®
- Safety Canopy™ System
- Tire Pressure Monitoring
- Reverse Sensing System
- HID Headlamps



Lincoln Navigator Ultimate in Black with available equipment.

Feel secure. Lincoln Navigator is the only vehicle in its class to receive the government's highest crash test safety rating* – 5 Stars.

Of course, Navigator's 5-Star status – which it has achieved 5 years in a row (2001–2005) – will seem only natural once you've considered its array of innovative security and safety features.

Up front, the Personal Safety System® delivers optimum protection for the driver and front passenger by adjusting safety belt tension and airbag energy deployment levels in certain frontal collisions.

On the sides, the Safety Canopy™ System provides enhanced head protection for 1st- and 2nd-row outboard passengers by deploying side-curtain airbags from the headliner in certain side-impact collisions and rollover events.

When any tire (except the spare) drops below the recommended pressure, you can count on Navigator's Tire Pressure Monitoring System to display an alert in the message center.

If you happen to come within 6 feet of an object when in Reverse, Navigator's convenient Reverse Sensing System emits a beeping tone to alert you. The closer you get, the faster the system beeps.

And, finally, available High-Intensity Discharge (HID) headlamps can provide better down-the-road vision via their brighter, whiter illumination.



*Government's driver and passenger frontal crash test.

06 NAVIGATOR SPECIFICATIONS



STANDARD EQUIPMENT

LUXURY

- Performance**
 5.4L SOHC 3-valve V-8 engine
 Fail-safe cooling system
 6-speed automatic transmission with overdrive
 4-corner load-leveling air suspension with independent front and rear
 Front and rear stabilizer bars
 Speed-sensitive, variable-assist power rack-and-pinion steering
 Power 4-wheel disc brakes with Anti-lock Brake System (ABS) and Electronic Brake Force Distribution (EBD)
 P255/70R18 all-season black sidewall tires

- Exterior**
 Lincoln waterfall grille; silver-painted with chromed surround
 Quad-beam halogen headlamps
 Fog lamps
 Color-keyed upper bumper fascia and accent-colored lower fascia
 Color-keyed bodyside cladding and wheel-lip moldings
 Black tow hooks integrated into front fascia
 Solar-tinted glass in front doors and windshield
 Privacy glass in rear doors, rear quarter windows and liftgate
 Power flip-out rear quarter glass
 Power-folding heated sideview mirrors with security approach lamps, integrated turn signals and memory feature
 Fixed running boards
 Luggage rack with chromed accents and black crossbars
 Liftgate with gas cylinder lift and flip-up glass
 Speed-sensitive intermittent windshield wipers with 3 washers
 2-speed intermittent rear-window wiper with washer
 18" 7-spoke machined-aluminum wheels with 17" steel spare
 Class III Standard-Duty Trailer Tow Package with frame-mounted trailer hitch receiver integrated into rear fascia, and 4-pin wiring harness

- Interior**
 Analog clock mounted between center vents on instrument panel
 Soft-touch instrument panel with American walnut burl wood and satin-nickel accents
 Dual-zone Electronic Automatic Temperature Control with secondary steering wheel-mounted controls

- Auxiliary Climate Control with 2 overhead vents for 2nd and 3rd rows, plus controls in overhead console and back of 1st-row floor console
 Lincoln Soundmark® Audiophile® Sound System with AM/FM stereo and 6-disc in-dash CD changer; driver-adjustable, speed-compensated volume control; 9 speakers including a subwoofer; rear-seat controller; and MP3 and SIRIUS Satellite Radio¹ capability
 1st-row leather-trimmed, low-back bucket seats with 10-way power adjustment, including power lumbar and recline, 4-way adjustable head restraints and driver's-side memory feature
 2nd-row leather-trimmed, low-back fold-down bucket seats with recline, 2-way head restraints and easy entry to 3rd row
 3rd-row vinyl-trimmed, 60/40 split bench seat that folds flat into the floor with 2-way adjustable outboard head restraints and center seat-integrated restraint
 1st-row floor console with floor shifter, power window switches, covered storage bin with chromed handle, 2 front cupholders, rear audio/climate controls, 2 headphone jacks and 2 rear cupholders
 2nd-row floor console with padded armrest, covered storage and 2 cupholders
 Power points located in 1st, 2nd and 3rd rows
 Assist handles in 1st and 2nd rows and assist pull on liftgate
 Rear cargo area storage bins
 Under-floor storage behind 3rd row
 Dual-blade sun visors with illuminated mirrors

- Instrumentation/Driver's Controls**
 Accessory timed delay
 Auto-dimming rearview mirror
 White LED back-lit instrument cluster with speedometer, tachometer, fuel level, coolant temperature and message center
 Message center with compass display, distance-to-empty, average fuel economy, odometer and trip odometer
 Overhead console with 1st-row map lights, sunglasses storage, power rear quarter window switches, secondary climate controls, conversation mirror and power liftgate switch (if equipped)
 Memory setting controls for position of driver's seat, sideview mirrors and power-adjustable pedals

- Leather- and wood-trimmed tilt steering wheel with secondary audio and climate controls and electronic speed control
 Power-adjustable brake and accelerator pedals with memory feature
 Power windows with one-touch-up/-down driver's-side feature
 Power door locks
 Universal Garage Door Opener located in driver's-side visor

- Security/Safety**
 AdvanceTrac® with Roll Stability Control
 Reverse Sensing System integrated in rear bumper
 Tire Pressure Monitoring System²
 Personal Safety System® with dual-stage front airbags, front crash severity sensor, front safety belt usage sensors, driver's-seat position sensor, front safety belt pretensioners and energy-management retractors
 Dual-stage driver and front-passenger airbags³
 Safety Canopy™ System with 1st- and 2nd-row side-curtain airbags and rollover sensor
 3-point safety belt restraints for all seating positions; height-adjustable in 1st and 2nd rows
 Side-intrusion door beams
 LATCH provides lower anchors and tether anchors for child-safety seats in all 2nd-row seating positions; tether anchor only in 3rd-row center
 Child-safety rear door locks
 Remote keyless-entry system with illuminated entry and security approach lamps
 Keyless-entry keypad mounted on driver's door
 Securilock® passive anti-theft system
 Autolamp automatic on/off headlamps with delay

- ULTIMATE**
 In addition to or in place of equipment on Luxury:
 Heated and cooled front seats with 3 settings
 Power moonroof with medium overhead console
 3rd-row power-folding 60/40 split bench seat
 Power liftgate

¹Dealer-installed option. ²Excludes steel spare. ³Always wear your safety belt and secure children in the rear seat.

Audiophile is a registered trademark of Audiophile, Inc.

AVAILABLE EQUIPMENT

LUXURY
ULTIMATE

- ○ Control Trac® 4-Wheel-Drive (4WD) System
- ○ High-Intensity Discharge (HID) headlamps
- Power-deployable running boards
- 18" 7-spoke chrome-aluminum wheels
- ○ 18" 7-spoke chrome-clad aluminum wheels
- Dual-Media Sound System with AM/FM stereo, single-CD and cassette players and MP3 capability
- Lincoln Soundmark® THX™ Certified Audio and Navigation System¹ including 6-disc in-dash CD changer, SIRIUS Satellite Radio capability, and 6.5" touch-screen DVD/Satellite Navigation System with secondary steering wheel-mounted controls
- ● Heated and cooled driver and front-passenger seats with 3 settings
- ○ 2nd-row leather-trimmed 40/20/40 split-folding bench seat with fold-flat feature, outboard recline, and center section that slides forward almost 11"
- ● Power moonroof with medium overhead console
- ○ Rear-Seat DVD Entertainment System including 2nd-row overhead DVD/CD player with MP3 capability, 7" flip-down color LCD screen, infrared remote and 2 sets of wireless headphones

SPECIAL PACKAGES

- ○ CLASS III/IV HEAVY-DUTY TRAILER TOW PACKAGE with frame-mounted, heavy-duty hitch receiver, 4- and 7-pin wiring harness, heavy-duty radiator, heavy-duty flashers, transmission cooler and brake module wiring
- ELITE PACKAGE with 18" 7-spoke chrome-aluminum wheels, Lincoln Soundmark THX Certified Audio and Navigation System, HID headlamps, Rear-Seat DVD Entertainment System, power-deployable running boards and Class III/IV Heavy-Duty Trailer Tow Package
- LIMITED-EDITION MONOTONE APPEARANCE PACKAGE with monotone-painted front and rear lower fascias, license-plate surround, running board trim, bodyside cladding and grille (chromed slats with body-color surround); chromed exhaust tip; standard 18" 7-spoke chrome-aluminum wheels or available 18" 7-spoke chrome-clad aluminum wheels; "Limited Edition" exterior badge; and leather-trimmed seats with contrasting seat piping and embossed "Lincoln" logo (available with Cashmere Tri-Coat, Silver Birch Metallic or Black exterior)
- MONOTONE APPEARANCE PACKAGE with monotone-painted front and rear lower fascias, license-plate surround, running board trim, bodyside cladding and grille (chromed slats with body-color surround); chromed exhaust tip; standard 18" 7-spoke chrome-aluminum wheels or available 18" 7-spoke chrome-clad aluminum wheels; (available with Cashmere Tri-Coat, Silver Birch Metallic or Black exterior)

● = Standard ○ = Available

Engine	5.4L SOHC 3-valve V-8
Horsepower (hp @ rpm)	300 @ 5000 (SAE net)
Torque (lb.-ft. @ rpm)	365 @ 3750 (SAE net)
Compression Ratio	9.5:1
Fuel Injection	Sequential multi-port electronic
Layout	Front engine, rear-wheel drive (2WD) or available 4-wheel drive (4WD)
Transmission	6-speed automatic overdrive with overdrive lockout
Axle Ratio	3.73:1
Suspension	Front: Independent Short- and Long-Arm (SLA) with monotube dampers, air springs and stabilizer bar Rear: Independent Short- and Long-Arm (SLA) with toe link, monotube dampers, air springs and stabilizer bar
Air Suspension	4-corner load-leveling independent system
Shock Absorbers	Monotube
Steering	Speed-sensitive, variable-assist power rack-and-pinion
Brakes	Power 4-wheel disc Anti-lock Brake System (ABS) with Electronic Brake Force Distribution (EBD)
Towing Equipment	Standard Class III Standard-Duty Trailer Tow Package Available Class III/IV Heavy-Duty Trailer Tow Package
Trailer Weight (lbs.)	2WD: 6000 std.; 8600 max. 4WD: 6000 std.; 8300 max.
Head Room	39.6" 1st row; 39.7" 2nd row; 37.8" 3rd row
Leg Room	41.2" 1st row; 38.7" 2nd row; 36.3" 3rd row
Height	77.8"
Length	207.5"
Width	80.2" (excluding mirrors)
Wheelbase	118.8"
Track	Front/Rear 67.0"/67.1"
Ground Clearance	8.6"
Cargo Volume (cu. ft.)	104.8 (behind 1st row)
Curb Weight (lbs.)	5552 2WD; 5844 4WD

Cargo and load capacity limited by weight and weight distribution.



lincoln.com

WHEELS

- A** 18" 7-spoke chrome-aluminum Available on Ultimate and included with the Elite Package, the Limited-Edition Monotone Appearance Package, and the Monotone Appearance Package
- B** 18" 7-spoke chrome-clad aluminum Available on Luxury and Ultimate, and in the Limited-Edition Monotone Appearance Package and the Monotone Appearance Package
- C** 18" 7-spoke machined-aluminum Standard on Luxury and Ultimate



INTERIOR/EXTERIOR COLORS

Camel	Dove	Charcoal Black	
■	■	■	Oxford White
■	■	■	Vivid Red
■		■	Light Tundra
■	■	■	Cashmere Tri-Coat*
■		■	Light French Silk
■		■	Charcoal Beige
■	■	■	Silver Birch
	■	■	Pewter
■	■	■	Black

Limited-Edition Monotone Appearance Package and Monotone Appearance Package available with Cashmere Tri-Coat, Silver Birch or Black exterior only.

PLEASE REFERENCE ACCOMPANYING COLOR PALETTE TO VIEW EXTERIOR PAINT COLORS AND LEATHER SEAT TRIM.

Comparisons based on 2005 competitive models, publicly available information and Ford certification data at time of printing. Following the publication of this brochure, certain changes in standard equipment, options, prices and the like, or product delays may have occurred which would not be included in these pages. Your Lincoln Mercury Dealer is your best source for up-to-date information. Lincoln Mercury reserves the right to change product specifications at any time without incurring obligations. Options shown or described in this brochure are available at extra cost and may be offered only in combination with other options or subject to additional ordering requirements or limitations. Lincoln uses clearcoat paint for beauty and protection. All exterior paints are Metallic except for Oxford White and Black. *Additional cost.

¹Navigation System not available in Alaska or Hawaii.



Lincoln **Commitment**.[®] Lincoln has long crafted luxury vehicles that exceed your expectations. An equally superior level of support and service is yours as well.

Complimentary maintenance makes driving your Lincoln even more of a pleasure. Simply bring it to an authorized Lincoln service center, and scheduled maintenance will be performed at no charge throughout your first year of ownership or 12,000 miles, whichever comes first. Additional peace of mind comes from a 4-year/50,000-mile bumper-to-bumper New-Vehicle Limited Warranty that covers repair, replacement or adjustment of parts at no additional cost. And Roadside Assistance for the same time period provides the security of knowing that help is only a phone call away. Your Lincoln Mercury Dealer will provide complete details on all of these privileges.



FORD CREDIT Get the ride you want. Whether you plan to lease or finance, you'll find the choices that are right for you at Ford Credit. Ask your Lincoln Mercury Dealer for details or check us out at www.fordcredit.com.

FORD MOTOR COMPANY INSURANCE SERVICES Choose the insurance program that's designed for your vehicle – Ford Motor Company Insurance Services. Our program helps you receive the rates and service you deserve. Call 877.367.3847 or visit us at www.fordvip.com for a no-obligation quote. Insurance offered by American Road Services Company (in CA, American Road Insurance Agency), a licensed agency and subsidiary of Ford Motor Company.

FORD EXTENDED SERVICE PLAN For a purchase or lease, the Ford Extended Service Plan (ESP) gives you "Peace-of-Mind" protection designed to cover key vehicle components and protect you from the cost of unexpected repairs. Ask your Lincoln Mercury Dealer for an ESP backed by Ford Motor Company and honored at all Ford and Lincoln Mercury dealerships.



LINCOLN

lincoln.com

LINCOLN BRAND EXTERIOR PAINT COLORS



CERAMIC WHITE PEARLESCENT TRI-COAT VIBRANT WHITE OXFORD WHITE



VIVID RED MERLOT DARK TOREADOR RED DARK CHERRY



LIGHT TUNDRA LIGHT ICE BLUE DARK BLUE PEARL



LIGHT SAGE CASHMERE TRI-COAT SMOKESTONE DUNE PEARL LIGHT FRENCH SILK CHARCOAL BEIGE



SILVER SILVER FROST SILVER BIRCH SATELLITE SILVER PEWTER TUNGSTEN GREY DARK SHADOW GREY BLACK

LINCOLN BRAND LEATHER SEAT TRIM



LIGHT PARCHMENT SAND



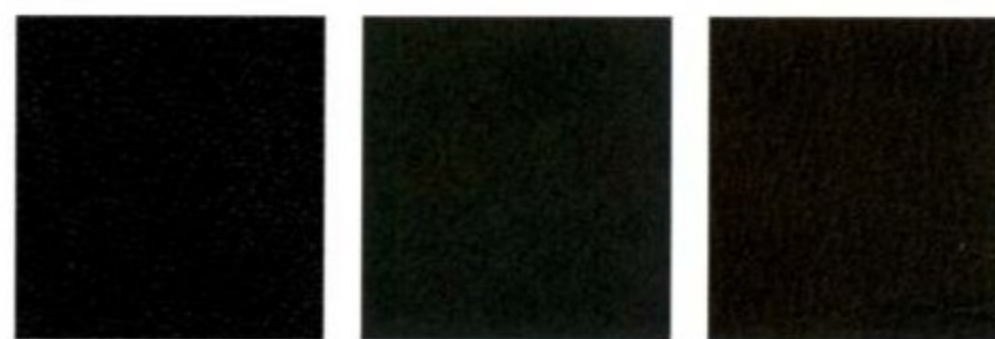
LIGHT STONE MEDIUM LIGHT STONE



LIGHT CAMEL CAMEL



DOVE DOVE GREY



DARK CHARCOAL CHARCOAL BLACK BLACK

