

06 LINCOLN TOWN CAR



LINCOLN



Town Car Signature Limited in Light Tundra Metallic (top) and Silver Birch Metallic (bottom).



LINCOLN



PERFORMANCE

Full-Length Frame
Anti-lock Brake System
All-Speed Traction Control

Move *distinctively*. On every journey, Lincoln Town Car rewards you with the essential luxury car experience: crisp steering, impeccable poise, a tranquil interior environment, and a velvety ride. As in life, you're in full command.

Town Car's quiet strength comes from its full-length frame – the foundation of its legendary, hushed ride. Hydroformed front frame rails optimize the location of its independent suspension components for enhanced handling and responsive steering. Monotube shock absorbers react quickly for precise control, while front and rear stabilizer bars help keep Town Car level when turning.

To help maintain steering control during hard braking, a standard Anti-lock Brake System electronically "pumps" the brakes several times per second, providing greater

steering control precisely when you most need it. To maintain your composure on loose or slippery surfaces, All-Speed Traction Control improves traction by using a combination of brake and engine control to reduce wheel spin.

Even at low speeds, Town Car lends a hand. While parallel parking, for instance, Town Car's speed-sensitive, variable-assist power rack-and-pinion steering allows for easy turning of its leather-wrapped steering wheel. At highway speeds, limited assistance ensures even inputs.

lincoln.com

PERFORMANCE

4.6L V-8 Engine
Automatic Transmission



Town Car Signature Limited in Silver Birch Metallic with available equipment.



Power surge. Confident, refined and, above all, responsive. With Lincoln Town Car, past performance is very indicative of future results. You can bank on it.



V-8 power has long been a hallmark of Lincoln Town Car – a tradition that continues in 2006. A supremely powerful and capable 4.6L V-8 engine, with 239 hp and 287 lb.-ft. of torque, drives all 2006 Town Cars. “It was right from day one,” says *TheCarConnection.com*. Power delivery is immediate and smooth, whether entering the highway or passing on the open road.

A 4-speed electronic automatic overdrive transmission is engineered to deliver smooth shifting through every range of speed and under varying conditions – such as with a trunk full of golf clubs. Town Car’s sophisticated electronic engine management system determines optimum shift points for maximum performance and fuel economy. A standard dual exhaust system aids performance as well.

INTERIOR

Spaciousness
Premium Leather Trim
Power-Adjustable Pedals



Expansive charm. Inside its plush cabin, Town Car puts you instantly at ease. Rich details create a delightful, soothing harmony. Spacious comfort lets you stretch out in style, so you're simply free to enjoy the drive.

To satisfy your high expectations, Lincoln utilizes the finest materials to create a sanctuary of craftsmanship and comfort inside every Town Car. Glove-soft, premium leather-trimmed seats deliver just the right balance of armchair ease and optimum support. American walnut burl wood adds rich, traditional accents while fine, white lighting provides a clean, contemporary ambience. For a unique experience, the new Town Car Designer includes tailored Provence leather-trimmed seats, two-tone door-trim panels, embroidered floor mats, brushed-aluminum scuff plates and more.

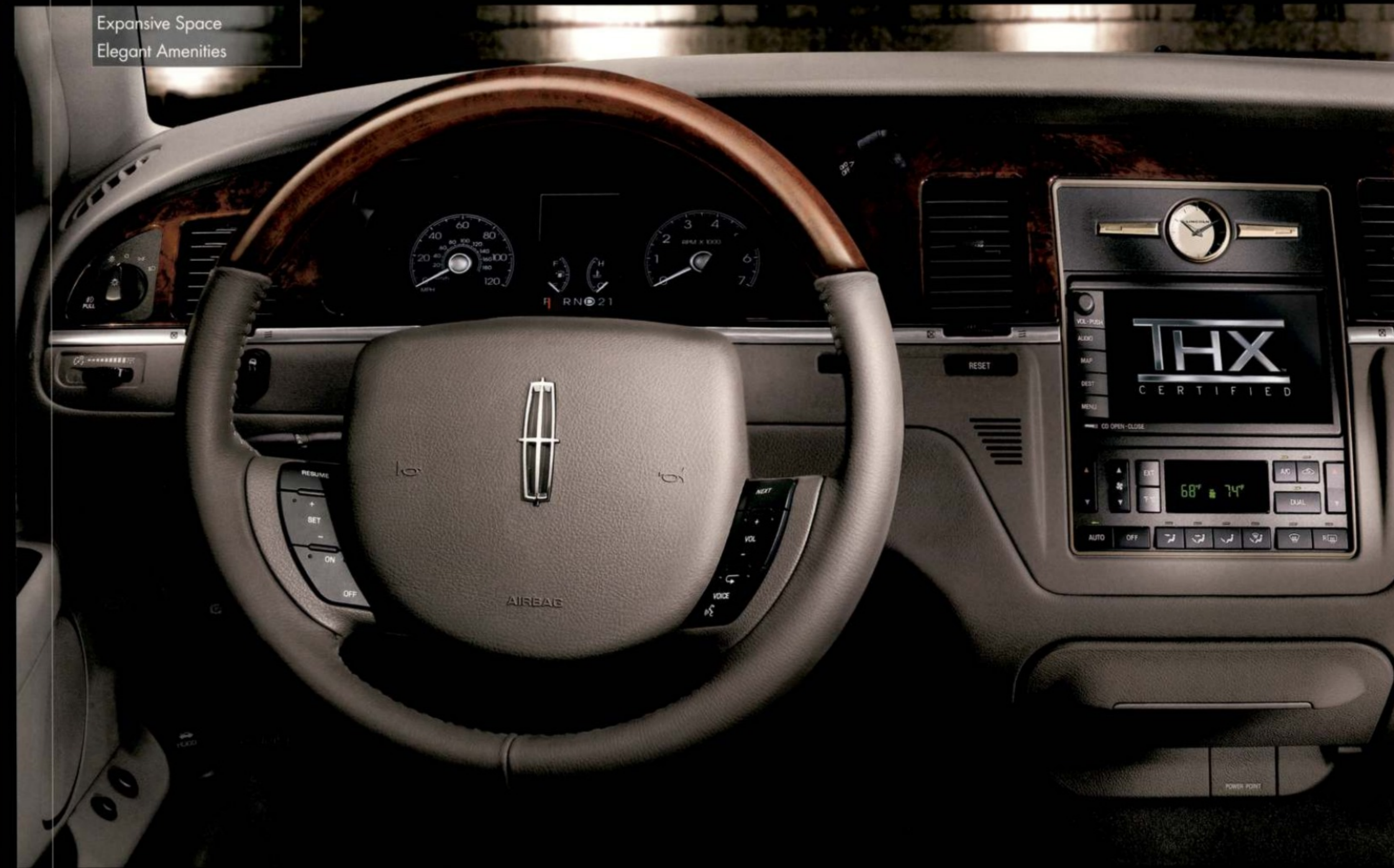
To personalize your experience at the wheel, Town Car Signature Limited, Designer and Signature L include 8-way power, heated front seats; power-adjustable brake and accelerator pedals; and power, heated sideview mirrors. The driver's seat, pedals and mirrors include memory settings. To indulge rear-seat passengers in Signature L, the standard Rear-Seat Amenities Package includes heated rear seats and a center folding armrest with secondary audio and climate controls, dual power points, dual cupholders and a storage bin.



lincoln.com

LUXURY

Expansive Space
Elegant Amenities



Signature Limited wood- and leather-trimmed steering wheel with controls for the available Lincoln Soundmark® THX™ Certified Audio and Navigation System.

Luxurious space. In Town Car, space reigns supreme. Elegant, expansive and functional, it's space as it was meant to be.

For proof, just open the trunk. Cargo space there is best-in-class* with 21.0 cu. ft., enough room for a week's worth of vacation necessities or the golf clubs of your entire foursome. On Signature models, lowering the trunk lid within 1.5" of closing activates a power pull-down feature that latches it for you. Town Car Signature Limited, Designer and Signature L include a Full-Power Trunk Lid, so loading and unloading are as effortless as possible. Just press the key fob button to fully open and close the trunk lid – automatically. A trunk organizer helps keep your items upright. See Specifications card for availability.

For efficient space management, the bi-directional front-row center armrest opens toward either the driver or front passenger, making it easy to retrieve stored items. Dual-zone Electronic Automatic Temperature Control makes your personal space more comfortable. It effortlessly maintains the selected temperatures of the driver and right-front passenger as they enjoy best-in-class front head room and shoulder room. To operate up to 3 remotely controlled garage doors from the comfort of your seat, Town Car's Universal Garage Door Opener is standard equipment.

On Signature Limited and Designer models, an available power moonroof lets you bring in just enough of the great outdoors.



lincoln.com

*Traditional Full-size Luxury Car class.

LUXURY

THX™ Certified Audio
DVD Navigation System
Dual-Media System

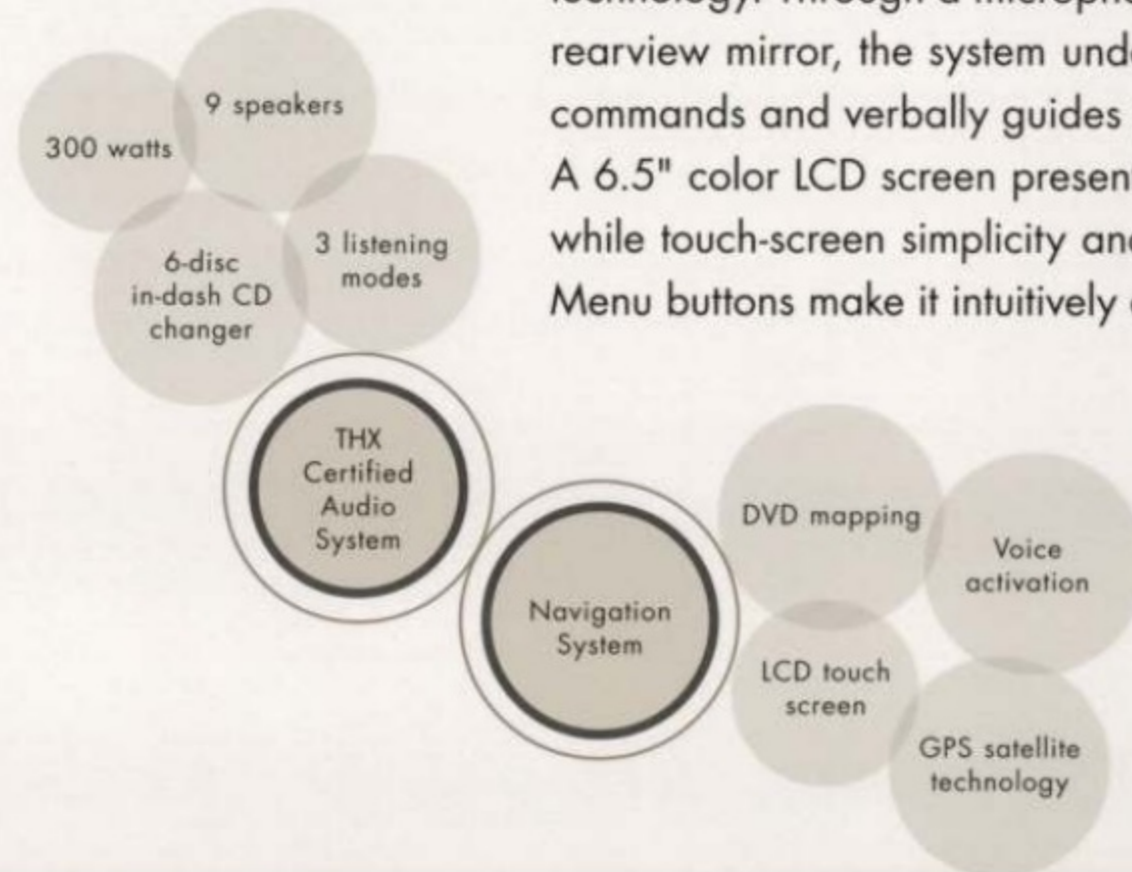


Available Lincoln Soundmark® THX Certified Audio and Navigation System with 6.5" color LCD touch screen.

Symphonic wonder.

Now playing – in stunning digital clarity. Your favorite score comes alive in the luxury of Town Car’s rich, THX Certified Car Audio System.

The available Lincoln Soundmark® THX™ Certified Audio and Navigation System in Town Car is an acoustic delight. A 6-disc in-dash CD changer supplies continuous music, while THX certification ensures that 8 Audiophile® speakers and a subwoofer provide crisp, clear sound, uniform sound balance at every seat, and dynamic performance at high output. In these plush confines, nothing could be finer – except for the hospitality of the integrated voice-activated/touch-screen Navigation System that combines DVD mapping with Global Positioning System (GPS) satellite technology. Through a microphone in the auto-dimming rearview mirror, the system understands over 170 voice commands and verbally guides you to your destination. A 6.5" color LCD screen presents high-quality graphics, while touch-screen simplicity and Map, Destination and Menu buttons make it intuitively easy to use.



SIRIUS On Signature Limited, Designer and Signature L, the system can also be equipped with the SIRIUS Satellite Radio service,* adding over 120 channels of coast-to-coast music, news, sports and entertainment.

A standard Soundmark Audiophile® Dual-Media Sound System on Signature Limited, Designer and Signature L provides Digital Sound Processing, 150 watts of power and 9 Audiophile speakers to heighten your listening pleasure. A 6-disc in-dash CD changer (shown) is available.



lincoln.com

*See your Lincoln Mercury Dealer for SIRIUS installation and activation details.



LINCOLN

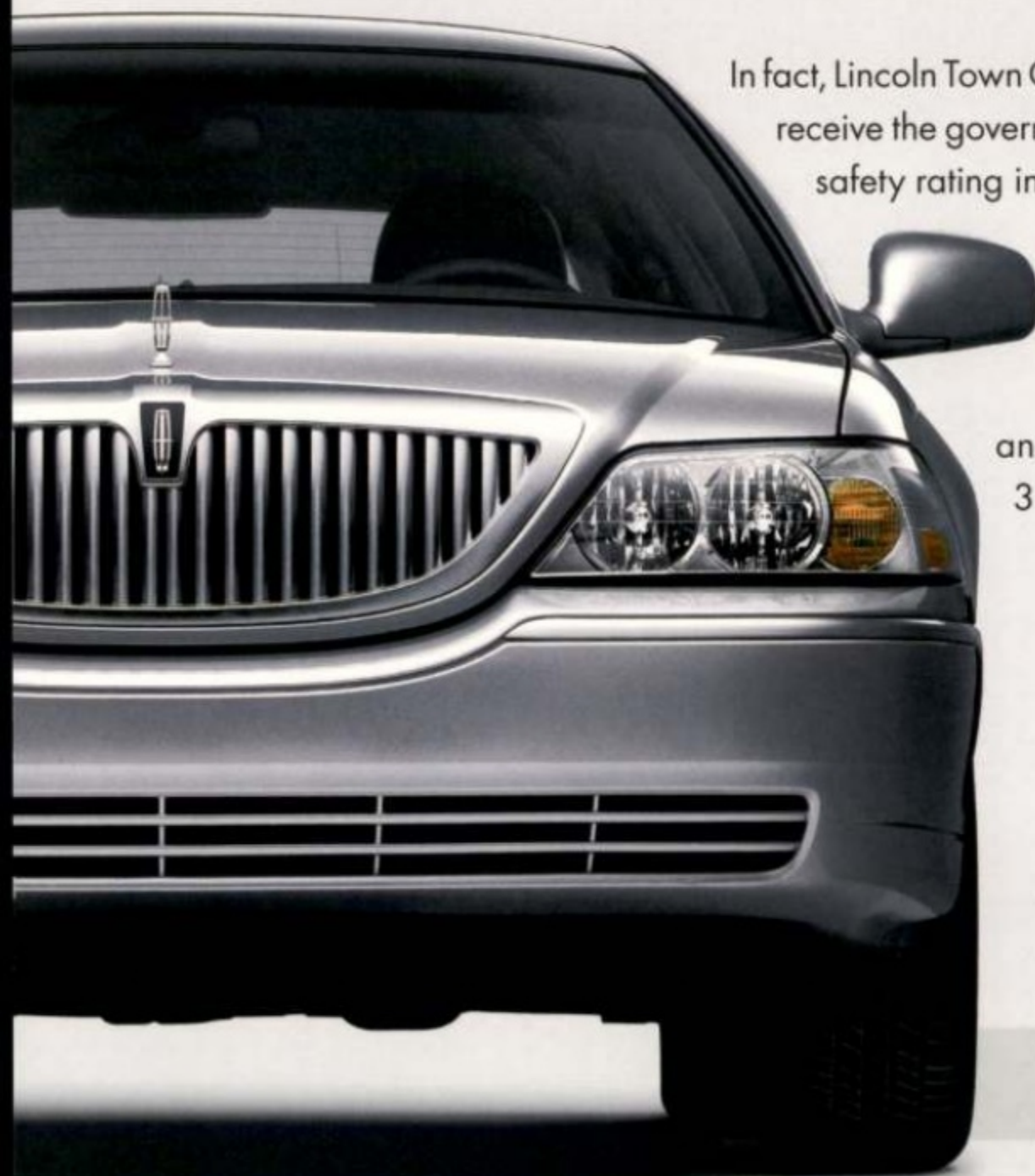
SECURITY/SAFETY

- 5-Star Rating
- Personal Safety System®
- Anti-lock Brake System
- All-Speed Traction Control



Town Car Signature Limited in Cashmere Tri-Coat with available equipment.

Supremely solid. The 2006 Town Car epitomizes the best of everything that a Lincoln should be: spacious, smooth and, above all, solid.



In fact, Lincoln Town Car is the first automobile ever to receive the government's highest 5-Star crash test safety rating in all 5 categories (driver frontal impact, front-passenger frontal impact, front-seat side impact, rear-seat side impact, and Rollover Resistance Rating) – an achievement it has garnered 3 years in a row (2003–2005).

In the event of certain frontal impacts, Town Car responds quickly. For starters, the Personal Safety System® controls safety belt tension and the energy deployment level of Town Car's dual-stage front airbags. In certain side-impact collisions, front-seat side airbags for the driver and right-front passenger and side-intrusion door beams in all 4 doors enhance occupant safety. A standard Anti-lock Brake System helps maintain steering control during hard braking, while All-Speed Traction Control improves traction on loose and slippery surfaces.



lincoln.com

STANDARD EQUIPMENT

SIGNATURE

Performance

- 4.6L SOHC 16-valve V-8 engine
- Fail-safe cooling system
- 4-speed electronic automatic overdrive transmission
- All-Speed Traction Control
- Speed-sensitive, variable-assist power rack-and-pinion steering
- Power 4-wheel disc anti-lock brakes
- Dual, stainless steel exhaust system
- P225/60R17 all-season black sidewall tires

Exterior

- Lincoln waterfall grille with chromed surround
- Color-keyed power, heated sideview mirrors with auto-dimming driver's side
- Intermittent, variable-speed windshield wipers
- Rear-window defroster
- Power pull-down trunk lid with low liftover height
- Extended Rear Park Assist
- 17" 12-spoke machined-aluminum wheels

Interior

- Dual-zone Electronic Automatic Temperature Control with secondary steering wheel-mounted controls
- Rear-seat climate control ducts
- Premium AM/FM stereo/single-CD player
- Premium leather-trimmed 8-way power front seats with 40/20/40 split and power lumbar
- Front seatback and door-trim map pockets
- Front-row center, bi-directional armrest with useable storage in lid; rear-seat center fold-down armrest with 2 cupholders
- Overhead console
- Lockable, illuminated glove compartment
- Front (2) and rear (2) cupholders
- Remote fuel filler door release on door-trim panel
- Remote trunk-lid release on door-trim panel
- Front and rear scuff plates with Lincoln-embossed aluminum inserts
- Auto-dimming rearview mirror
- Illuminated visor vanity mirrors

Instrumentation/Driver's Controls

- Accessory timed delays
- Analog instrument cluster with secondary digital speedometer
- Electronic digital compass in message center
- Tilt, leather-wrapped steering wheel with secondary audio and climate controls and electronic speed control
- Power windows with one-touch-up/-down driver's-side feature
- Power door locks with SmartLock
- Power-adjustable pedals
- Automatic parking brake release
- Universal Garage Door Opener

Security/Safety

- Personal Safety System® for driver and right-front passenger with dual-stage front airbags,¹ front crash severity sensor, sensors to detect front outboard safety belt usage and driver's-seat position, Front-Passenger Sensing System, front outboard safety belt pretensioners and energy-management retractors
- Front-seat side airbags¹ with head/chest protection for driver and right-front passenger
- Lap and shoulder belts for front outboard seating positions (height-adjustable) and all rear seating positions, lap belt for front-center position
- Rear-seat LATCH (lower anchors and tether anchors for child-safety seats)
- Side-intrusion door beams
- Child-safety rear door locks
- Remote keyless-entry system with illuminated entry, theater dimming and security approach lamps (when Autolamp system is engaged)
- Driver's door-mounted keyless-entry keypad
- Door courtesy lights with integral reflectors
- Autolamp automatic on/off headlamps with delay
- Cornering lamps
- Perimeter alarm system
- SecuriLock® passive anti-theft system
- SmartLock anti-lockout system
- Brake/shift interlock

SIGNATURE LIMITED

- In addition to or in place of equipment on Signature:
- Full-power trunk lid with remote open/close
 - 17" 10-spoke machined-aluminum wheels
 - Wood- and leather-trimmed steering wheel
 - Lincoln Soundmark® Audiophile® Dual-Media AM/FM stereo/single-CD/cassette with Digital Sound Processing, 150 watts, 8 Audiophile speakers and a subwoofer; SIRIUS Satellite Radio capable
 - Heated front seats
 - Memory settings for power-adjustable pedals, sideview mirrors and easy entry/exit power driver's seat
 - Embroidered floor mats

DESIGNER

- In addition to or in place of equipment on Signature Limited:
- Chrome B-pillar trim and chromed door handles
 - "Designer" badging
 - 17" 18-spoke chrome-aluminum wheels
 - Two-tone door-trim panels
 - Provence leather-trimmed seats with shirred inserts and contrasting piping
 - Adjustable rear-seat head restraints
 - Brushed-aluminum scuff plates

SIGNATURE L

- In addition to or in place of equipment on Signature Limited:
- 6" extended wheelbase
 - Heavy-duty front stabilizer bar
 - REAR-SEAT AMENITIES PACKAGE with heated rear seats; illuminated cigar lighter on each rear door; one-piece floor mat with Lincoln star logo; rear-seat 4-way head restraints; rear-seat center fold-down armrest with storage bin, tissue bin and 2 cupholders; rear-seat illuminated visors; dual power points; secondary audio/climate controls; and secondary front-passenger seat forward and back control

¹Always wear your safety belt and secure children in the rear seat.

Audiophile is a registered trademark of Audiophile, Inc.

AVAILABLE EQUIPMENT

SIGNATURE	
SIGNATURE LIMITED	
DESIGNER	
SIGNATURE L	
<input type="checkbox"/>	<input type="checkbox"/> High-Intensity Discharge (HID) headlamps
<input type="checkbox"/>	<input type="checkbox"/> Two-tone paint treatment
<input type="checkbox"/>	<input type="checkbox"/> Power moonroof
<input type="checkbox"/>	<input type="checkbox"/> Lincoln Premium Dual-Media AM/FM stereo/single-CD/cassette
<input type="checkbox"/>	<input type="checkbox"/> 6-disc in-dash CD changer
<input type="checkbox"/>	<input type="checkbox"/> Lincoln Soundmark® THX™ Certified Car Audio System, including touch-screen DVD/Satellite Navigation System ¹ and 6-disc in-dash CD changer, SIRIUS Satellite Radio capable (6-disc in-dash CD changer replaces Dual-Media on Navigation System)
<input type="checkbox"/>	<input type="checkbox"/> SIRIUS Satellite Radio service ²
<input type="checkbox"/>	<input type="checkbox"/> Trunk organizer
<input type="checkbox"/>	<input checked="" type="checkbox"/> 17" 18-spoke chrome-aluminum wheels
<input type="checkbox"/>	<input type="checkbox"/> P225/60R17 all-season white sidewall tires

● = Standard ○ = Available

Engine	4.6L SOHC 16-valve V-8
Horsepower	239 hp @ 4900 rpm
Torque	287 lb.-ft. @ 4100 rpm
Compression Ratio	9.38:1
Fuel Injection	Sequential multi-port electronic
Ignition	Coil-on-plug electronic
Layout	Front engine, rear-wheel drive
Transmission	4-speed electronic automatic with overdrive and lockup torque converter
Axle Ratio	3.27:1
Suspension	Front Independent aluminum Short- and Long-Arm (SLA) with coil springs and stabilizer bar
	Rear Watt's linkage with load-leveling air springs and stabilizer bar
Shock Absorbers	Gas-pressurized hydraulic monotube
Brakes	Power 4-wheel disc with Anti-lock Brake System (ABS)
Head Room	Front 39.5" Rear 37.4" Signature, Signature Limited, Designer
	39.5" 37.4" Signature L
Leg Room	41.6" 39.6" Signature, Signature Limited, Designer
	41.6" 45.4" Signature L
Hip Room	57.0" 57.9" Signature, Signature Limited, Designer
	57.0" 58.3" Signature L
Shoulder Room	60.3" 59.9" Signature, Signature Limited, Designer
	60.3" 59.9" Signature L
Height	59.0" Signature, Signature Limited, Designer; 59.1" Signature L
Length	215.4" Signature, Signature Limited, Designer; 221.4" Signature L
Width	78.5" (excluding mirrors)
Wheelbase	117.7" Signature, Signature Limited; 123.7" Signature L
Track	Front/Rear 63.4"/65.9"
Trunk Volume	21.0 cu. ft.
Curb Weight	4345-4518 lbs.
EPA-Estimated Fuel Economy	18 mpg city/25 hwy.

Cargo and load capacity limited by weight and weight distribution.



lincoln.com

¹Navigation System not available in Alaska or Hawaii. ²SIRIUS not available in Alaska or Hawaii. Dealer-installed option; requires Navigation System.

WHEELS

- A** 17" 12-spoke machined-aluminum Standard on Signature
- B** 17" 10-spoke machined-aluminum Standard on Signature Limited and Signature L
- C** 17" 18-spoke chrome-aluminum Standard on Designer; Available on Signature Limited and Signature L



SIGNATURE, SIGNATURE LIMITED & DESIGNER INTERIOR/EXTERIOR COLORS

Medium Light Stone	Light Camel	Dove	Black	
■	■	■		Ceramic White Pearlescent Tri-Coat*
■	■	■	■	Vibrant White
■	■	■		Dark Cherry
■	■			Light Tundra
■	■	■		Light Ice Blue
■	■	■		Cashmere Tri-Coat*
■	■			Light French Silk
■	■		■	Charcoal Beige
■			■	Silver Birch
■		■		Pewter
■	■	■	■	Black
■	■	■		Ceramic White Pearlescent Tri-Coat*/Light French Silk
■	■			Light Tundra/Light French Silk
■	■	■		Cashmere Tri-Coat*/Light French Silk
■	■	■		Cashmere Tri-Coat*/Pewter
■	■		■	Silver Birch/Pewter

Designer available with Medium Light Stone or Light Camel interior only.

SIGNATURE L INTERIOR/EXTERIOR COLORS

Medium Light Stone	Light Camel	Dove	Black	
■	■	■		Ceramic White Pearlescent Tri-Coat*
■	■	■	■	Dark Cherry
■	■			Light Tundra
■	■	■		Cashmere Tri-Coat*
■	■			Light French Silk
■	■		■	Charcoal Beige
■			■	Silver Birch
■	■	■	■	Black

PLEASE REFERENCE ACCOMPANYING COLOR PALETTE TO VIEW EXTERIOR PAINT COLORS AND LEATHER SEAT TRIM.

Comparisons based on 2005 competitive models, publicly available information and Ford certification data at time of printing. Following the publication of this brochure, certain changes in standard equipment, options, prices and the like, or product delays may have occurred which would not be included in these pages. Your Lincoln Mercury Dealer is your best source for up-to-date information. Lincoln Mercury reserves the right to change product specifications at any time without incurring obligations. Options shown or described in this brochure are available at extra cost and may be offered only in combination with other options or subject to additional ordering requirements or limitations. Lincoln uses clearcoat paint for beauty and protection. All exterior paints are Metallic except for Ceramic White Pearlescent Tri-Coat, Vibrant White, Cashmere Tri-Coat and Black. *Additional cost.



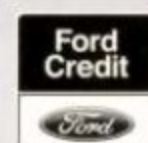
06 LINCOLN TOWN CAR



LINCOLN

Lincoln Commitment.[®] Lincoln has long crafted luxury vehicles that exceed your expectations. An equally superior level of support and service is yours as well.

Complimentary maintenance makes driving your Lincoln even more of a pleasure. Simply bring it to an authorized Lincoln service center, and scheduled maintenance will be performed at no charge throughout your first year of ownership or 12,000 miles, whichever comes first. Additional peace of mind comes from a 4-year/50,000-mile bumper-to-bumper New-Vehicle Limited Warranty that covers repair, replacement or adjustment of parts at no additional cost. And Roadside Assistance for the same time period provides the security of knowing that help is only a phone call away. Your Lincoln Mercury Dealer will provide complete details on all of these privileges.



FORD CREDIT Get the ride you want. Whether you plan to lease or finance, you'll find the choices that are right for you at Ford Credit. Ask your Lincoln Mercury Dealer for details or check us out at www.fordcredit.com.

FORD MOTOR COMPANY INSURANCE SERVICES Choose the insurance program that's designed for your vehicle – Ford Motor Company Insurance Services. Our program helps you receive the rates and service you deserve. Call 877.367.3847 or visit us at www.fordvip.com for a no-obligation quote. Insurance offered by American Road Services Company (in CA, American Road Insurance Agency), a licensed agency and subsidiary of Ford Motor Company.

FORD EXTENDED SERVICE PLAN For a purchase or lease, the Ford Extended Service Plan (ESP) gives you "Peace-of-Mind" protection designed to cover key vehicle components and protect you from the cost of unexpected repairs. Ask your Lincoln Mercury Dealer for an ESP backed by Ford Motor Company and honored at all Ford and Lincoln Mercury dealerships.



Lincoln Test Drive 888.566.8888

Customer Assistance 800.521.4140

Roadside Assistance 800.241.3673

lincoln.com

06LTCCAT VOL. 1 ©2005 Lincoln Mercury, Ford Motor Company

COLOR PALETTE



LINCOLN

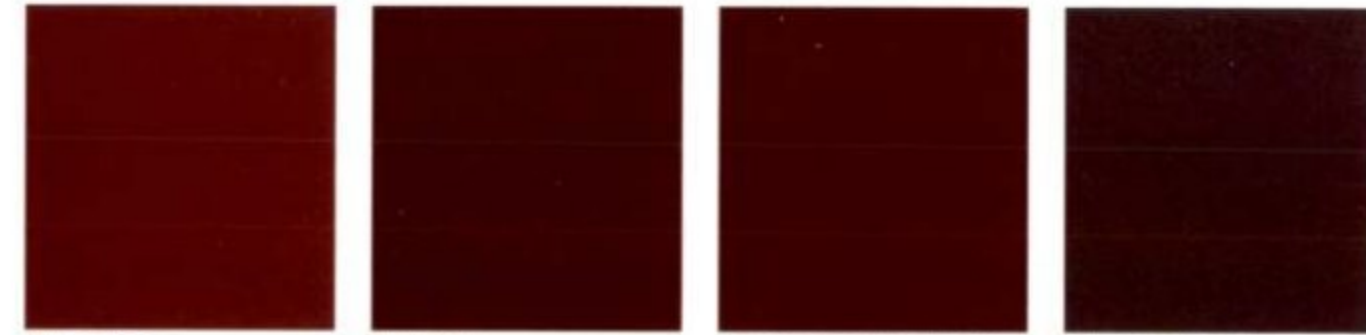
lincoln.com

PLEASE REFERENCE THE SPECIFICATIONS CARD OF YOUR LINCOLN VEHICLE FOR THE AVAILABILITY OF SPECIFIC COLOR PALETTE COMBINATIONS.

LINCOLN BRAND EXTERIOR PAINT COLORS



CERAMIC WHITE PEARLESCENT TRI-COAT VIBRANT WHITE OXFORD WHITE



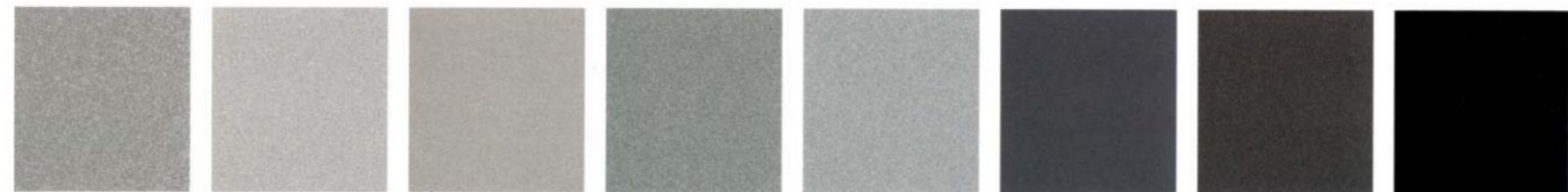
VIVID RED MERLOT DARK TOREADOR RED DARK CHERRY



LIGHT TUNDRA LIGHT ICE BLUE DARK BLUE PEARL



LIGHT SAGE CASHMERE TRI-COAT SMOKESTONE DUNE PEARL LIGHT FRENCH SILK CHARCOAL BEIGE

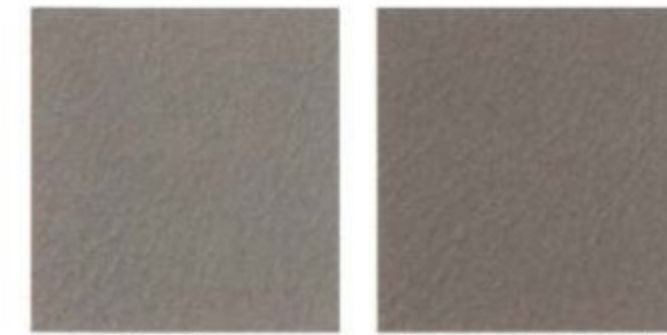


SILVER SILVER FROST SILVER BIRCH SATELLITE SILVER PEWTER TUNGSTEN GREY DARK SHADOW GREY BLACK

LINCOLN BRAND LEATHER SEAT TRIM



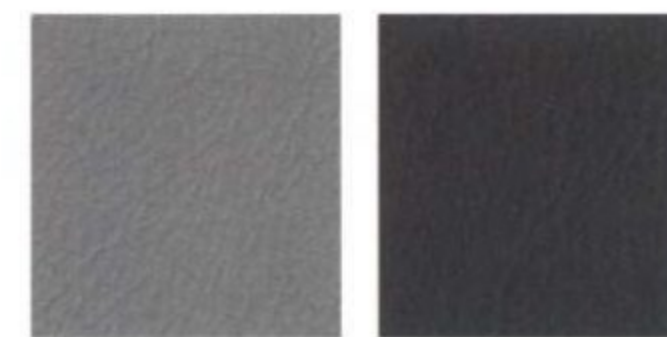
LIGHT PARCHMENT SAND



LIGHT STONE MEDIUM LIGHT STONE



LIGHT CAMEL CAMEL



DOVE DOVE GREY



DARK CHARCOAL CHARCOAL BLACK BLACK

