

## 06 MERCURY MONTEGO



**MERCURY** | NEW DOORS OPENED

SATELLITE SILVER METALLIC: MONTEGO PREMIER WITH AVAILABLE EQUIPMENT

COLOR PALETTE

Please reference the Specifications card of your Mercury vehicle for the availability of specific Color Palette Combinations.



MERCURY | NEW DOORS OPENED

mercuryvehicles.com

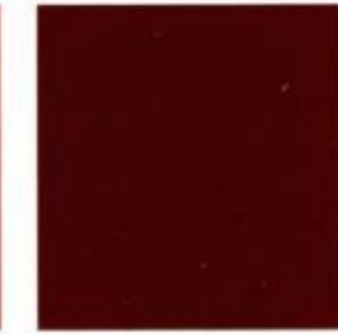
MERCURY BRAND EXTERIOR PAINT COLORS

VIBRANT WHITE

OXFORD WHITE



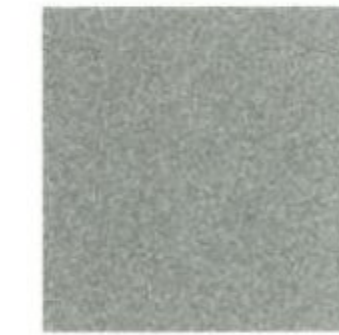
VIVID RED



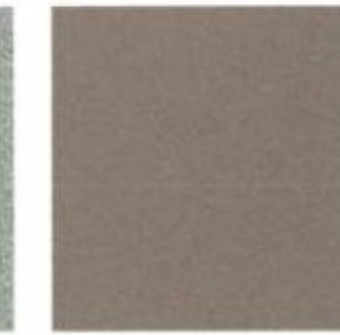
MERLOT



DARK TOREADOR RED



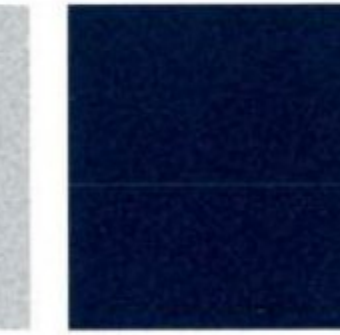
LIGHT TUNDRA



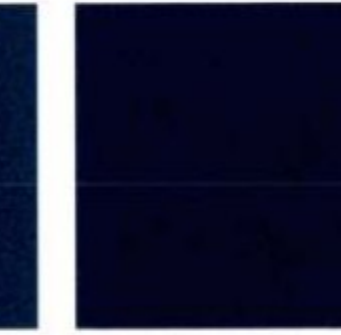
SPRUCE GREEN



LIGHT ICE BLUE



NORSEA BLUE



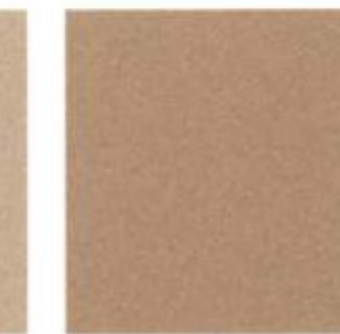
DARK BLUE PEARL



CASHMERE TRI-COAT



SMOKESTONE



DUNE PEARL



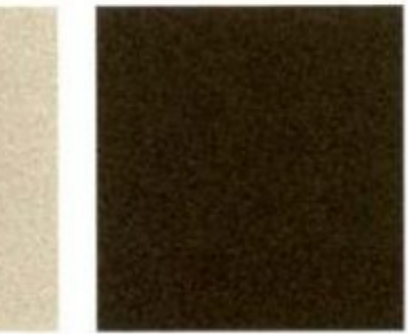
LIGHT FRENCH SILK



ARIZONA BEIGE



GOLD ASH



CHARCOAL BEIGE



SILVER



SILVER FROST



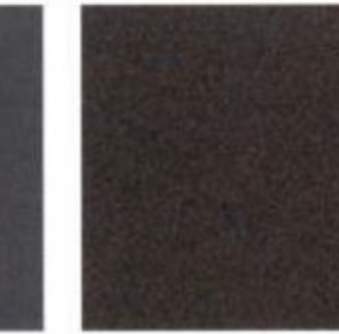
SILVER BIRCH



SATELLITE SILVER



TUNGSTEN GREY



DARK SHADOW GREY



MINERAL GREY



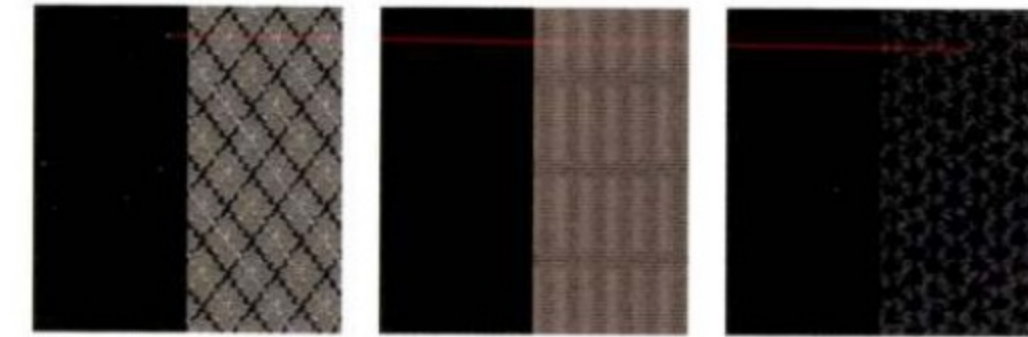
BLACK

Lincoln Mercury reserves the right to change product specifications at any time without incurring obligations. Please see your Lincoln Mercury Dealer for actual paint/trim options. Mercury uses clearcoat paint for beauty and protection. All exterior paints are Metallic except for Vibrant White, Oxford White, Cashmere Tri-Coat and Black. Colors are representative only.

MERCURY BRAND CLOTH SEAT TRIM



BLACK/LIGHT PARCHMENT INSERTS CAMEL CAMEL/SAND INSERTS



CHARCOAL/MEDIUM FLINT TWO-TONE CHARCOAL BLACK/MEDIUM LIGHT STONE INSERTS CHARCOAL BLACK TWO-TONE



DARK CHARCOAL LIGHT CAMEL TWO-TONE



MEDIUM LIGHT STONE MEDIUM LIGHT STONE TWO-TONE



PEBBLE PEBBLE/LIGHT PARCHMENT INSERTS PEBBLE TWO-TONE SHALE TWO-TONE

MERCURY BRAND LEATHER SEAT TRIM



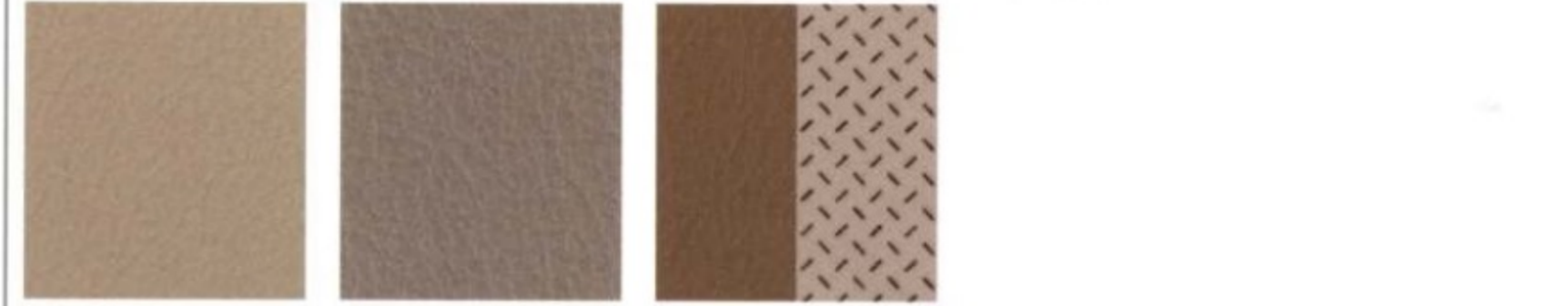
BLACK WITH DIAMOND PLATE INSERTS BLACK/LIGHT PARCHMENT PREFERRED SUEDE® INSERTS CAMEL CAMEL WITH PERFORATED INSERTS CAMEL/SAND EMBOSSED PREFERRED SUEDE INSERTS



CHARCOAL/LIGHT FLINT PERFORATED INSERTS CHARCOAL/LIGHT FLINT PREFERRED SUEDE INSERTS CHARCOAL/LIGHT FLINT TWO-TONE CHARCOAL BLACK CHARCOAL BLACK WITH PERFORATED INSERTS



CHARCOAL BLACK WITH MINI-PERFORATED INSERTS CHARCOAL BLACK/SAND EMBOSSED PREFERRED SUEDE INSERTS DARK CHARCOAL DARK CHARCOAL/MEDIUM LIGHT STONE TWO-TONE



LIGHT CAMEL MEDIUM LIGHT STONE PEBBLE/LIGHT PARCHMENT DIAMOND PLATE INSERTS



PEBBLE/LIGHT PARCHMENT PERFORATED INSERTS PEBBLE/LIGHT PARCHMENT PREFERRED SUEDE INSERTS PEBBLE/LIGHT PARCHMENT TWO-TONE PEBBLE TWO-TONE WITH MINI-PERFORATED INSERTS SHALE TWO-TONE WITH MINI-PERFORATED INSERTS

Preferred Suede is a registered trademark of Milliken & Company.



Modern power, precisely applied.

RESPONSIVE AND FUEL-EFFICIENT

3.0L DURATEC 30 V-6 ENGINE

203 HP & 207 LB.-FT. OF TORQUE

CONTINUOUSLY VARIABLE TRANSAXLE

6-SPEED AUTOMATIC TRANSAXLE

Power is important. Always has been. But these days, fuel economy is equally so. Adding more cubic inches, then, is not today's answer to responsive performance. Making every ounce of power work to your fullest advantage is smarter, and it's achieved with both powertrains available on Mercury Montego. Paired with either a Continuously Variable Transaxle (CVT) or 6-speed automatic, Montego's 3.0L Duratec 30 V-6 engine provides **responsive acceleration, smooth power and remarkable fuel efficiency**. The end result: a quietly confident 203 hp, 207 lb.-ft. of torque, and EPA-estimated fuel economy of 21 mpg city/29 highway on FWD models and 19 mpg city/26 highway on AWD models.

Montego's **class-exclusive CVT**, with a drive-ratio span of more than 6 to 1, offers a strong drive ratio for acceleration and passing power, and an economical ratio to **maximize fuel economy** when highway cruising. An intricate steel-link belt connecting 2 variable-size pulleys always keeps the engine in its most efficient range. Covering a nearly identical overall gear-ratio span as the CVT, Montego's electronically controlled **6-speed automatic transaxle** actually adapts to your driving conditions and adjusts shift points accordingly to optimize performance or fuel economy. In "low" range, the transmission controller increases engine braking to help hold a steady speed when going downhill on steep grades.



MERLOT METALLIC: MONTEGO PREMIER WITH AVAILABLE EQUIPMENT

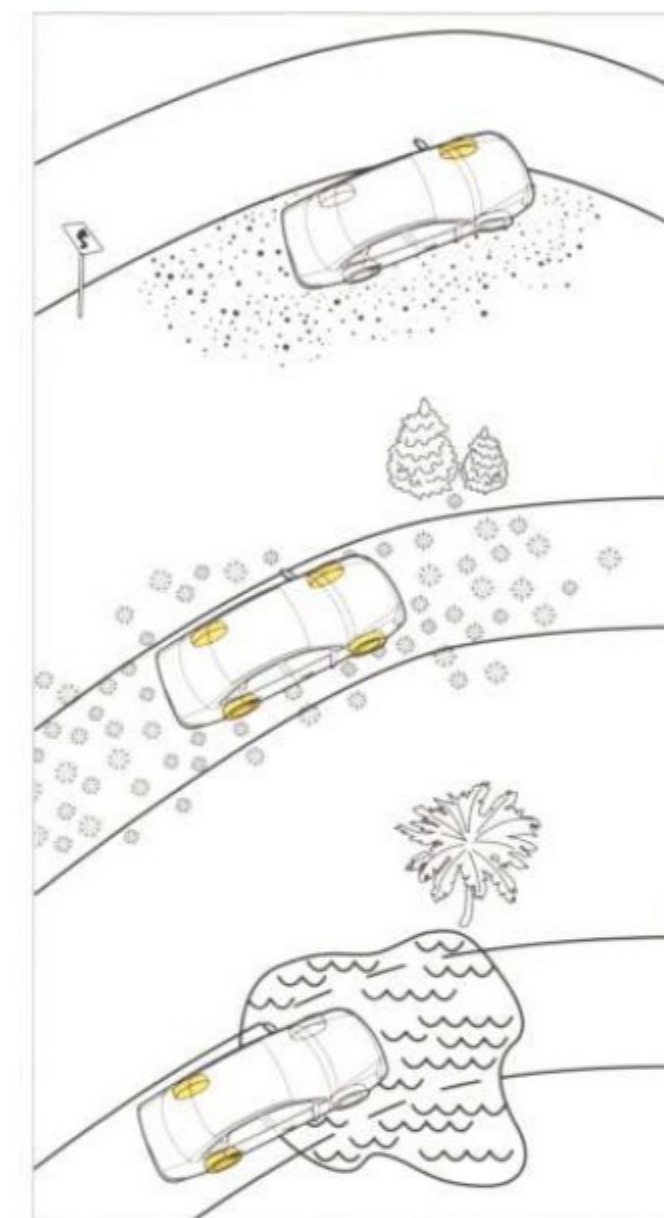
mercuryvehicles.com



MERCURY



DARK SHADOW GREY METALLIC: MONTEGO PREMIER WITH AVAILABLE EQUIPMENT



[A] Because the system's Traction Control can direct torque side to side on each axle, Montego's available AWD can continue moving you forward even if only one wheel has grip.

[B] Since the wheels with the best traction always receive the most power, Montego AWD enhances control if the weather turns nasty.

[C] The instant Montego's AWD system senses a difference in speed between the front and rear wheels, the rear axle receives up to 100% of available engine torque to aid with traction.

## When cornered, it really shines.

### ALL-THE-TIME BENEFITS

Not just for the slippery road, Mercury Montego's available All-Wheel-Drive (AWD)\* system can significantly enhance your dry-pavement fun. During rapid acceleration or hug-the-line cornering, for example, AWD seamlessly distributes power between front and rear wheels to give you increased control and performance. On snowy or wet road surfaces, of course, AWD really shines. The system's quick activation helps you get started and maintain control, even under difficult weather conditions. As soon as any wheel slip is detected, AWD delivers power to the wheels with the most traction – **maintaining optimal grip within 50 milliseconds**. It can also direct power side to side on each axle, thanks to Traction Control, allowing you to continue forward motion even if only one wheel has grip. **"I am very impressed that this is an AWD sedan – especially at this price," AutoWeek says.**

The heart of Montego's AWD operation is its HALDEX® coupling, which transmits driveshaft torque to the rear axle and wheels. Activation is seamless, smooth – and lightning-fast. The instant the system senses a difference in speed between the front and rear wheels, the rear axle receives up to 100% of available engine torque to aid traction. Teaming a Continuously Variable Transaxle (CVT) with AWD adds CVT's strengths to this system. Because the CVT offers broad drive ratios and optimizes engine torque for all driving conditions, Montego's AWD system has power on hand to maneuver through snow, mud, sand and other driving challenges.



\*Available on all Montego models. HALDEX is a registered trademark owned by Haldex, AB.

mercuryvehicles.com



MERCURY



SATELLITE SILVER METALLIC: MONTEGO PREMIER



- [A] HALDEX® AWD COUPLING
- [B] FULLY INDEPENDENT SUSPENSION
- [C] BIG DISC BRAKES
- [D] CUSHIONING BUSHINGS
- [E] STIFF SUBFRAMES



#### HANDLES WITH FLAIR

In just 50 milliseconds (that's extremely fast, by the way), the HALDEX coupling on Montego AWD models can deliver drive torque to the rear axle – giving you extra assurance that you'll have the best available traction to handle any road with confidence.

**"Handling is spirited,"** *AutoWeek* says. Credit a fully independent front and rear suspension that's tuned to offer invigorating driving response while minimizing the impact of road bumps. Up front, MacPherson struts and rearward-facing L-arms aid in steering response and driving comfort. The multi-link rear suspension is built on a U-shaped welded-steel subframe that provides exceptional stiffness to resist the shaking, bending and other forms of movement that can accompany uneven road surfaces and potholes. This precise suspension tuning enhances driver feel from Montego's power rack-and-pinion steering. **"The ride quality in the Montego is excellent – controlled and well-damped,"** *The Detroit News* says.

Standard 17" wheels (Premier models feature 18" wheels) allow large rotors and disc-brake pads to aid braking power and response time. Aluminum dual-piston front calipers exhibit excellent braking properties, while low-metallic pad materials achieve strong performance and minimize brake dust.

To improve traction on loose or slippery surfaces, available Traction Control on FWD models uses engine and/or brake controls to reduce wheel spin. On Montego AWD models, standard Traction Control works with the AWD system to direct torque side to side on each axle. **Even if only one wheel has traction, AWD can direct most of the torque there to continue forward motion.**

To maintain a supple and carefree ride, 30 bushings in the multi-link, AWD, independent rear suspension – and 24 bushings in FWD models – work to cushion forces from road seams and large bumps.

Montego's front and rear subframes and stiff unibody allow its power rack-and-pinion steering and front and rear suspension components to be finely tuned, contributing greatly to its smooth ride and agile handling characteristics.



SHALE TWO-TONE LEATHER TRIM WITH MINI-PERFORATED INSERTS: MONTEGO PREMIER



Finely tailored, meticulously sculpted, delightfully detailed. And that's before you get in.



NEW NAVIGATION SYSTEM



DUAL-ZONE TEMPERATURE CONTROLS



NEW REAR-SEAT ENTERTAINMENT



HEATED FRONT SEATS



POWER MOONROOF

DESIGNED TO DELIGHT

"It's the details that make this car work," says *AutoWeek*. Like the modern chrome-finish trim rings around the instrument panel gauges, or the delightful satin-aluminum cuffs on the steering wheel. Audio choices range from an AM/FM stereo single-CD player on Luxury to Premier's standard Audiophile® Sound System with 6-disc in-dash CD changer and MP3 capability. Better yet is the new Navigation System, optional on Premier models. Easily accessible maps and menus are clearly displayed on a large 6.5" color LCD screen. Locating the nearest ATM, hotel, gas station or restaurant has never been easier. In addition, a handy Valet Mode lets you lock out the system when you don't want it used by others.

For those seated in the rear, they have their own advantages. For starters, **Montego is the most spacious sedan in its class\*** in the critical areas of total passenger volume and rear head and leg room. And new this year is an available Rear-Seat DVD Entertainment System. With its 7" LCD viewing screen and 2 wireless headphones, you may start hearing "We're not there yet, are we?"

COMFORT PACKAGE, MONTEGO LUXURY ONLY:  
 AM/FM STEREO WITH 6-DISC IN-DASH CD CHANGER  
 4-WAY POWER FRONT-PASSENGER'S SEAT  
 DRIVER'S SEAT WITH POWER RECLINE\*\*

MONTEGO PREMIER ONLY:  
 NAVIGATION SYSTEM†

\*Standard 5-passenger Large Car class. \*\*Also available as a stand-alone option on Montego Luxury. †Optional feature. Not available in Alaska.



60/40 SPLIT-FOLDING REAR SEAT AND FOLD-DOWN FRONT-PASSENGER'S SEAT ALLOW ITEMS UP TO 9' THROUGH TRUNK



### The height of sedan functionality.

#### INSIDER INFORMATION

From its inception, Mercury Montego was designed around a Command Seating™ position. Because the driver's seat sits high off the ground, benefits of this innovative thinking include easy entry and exit, a more upright seating position, and an **excellent view of the road** as you navigate through traffic. Instead of just seeing the road, you'll command it in ways you never expected.

On Montego Premier, supple leather-trimmed seats make every drive more luxurious. Power controls supply 8-way movement to the driver's seat and 4-way movement to the passenger's seat, including power recline on both. And 2 front-seat heat settings help take the chill out of crisp, autumn mornings.

Even with the front seat moved all the way back, the amount of breathing room in Montego's comforting rear seat is hard to believe. **Rear-seat leg room is best in class** – and more generous than many larger automobiles. And with **the largest trunk of any sedan**, Montego can hold everything you need to bring along for the ride.



SIT HIGH AND TAKE COMMAND OF THE ROAD  
COMMAND SEATING

ENJOY THE LARGEST TRUNK OF ANY SEDAN  
21.2 CU. FT.

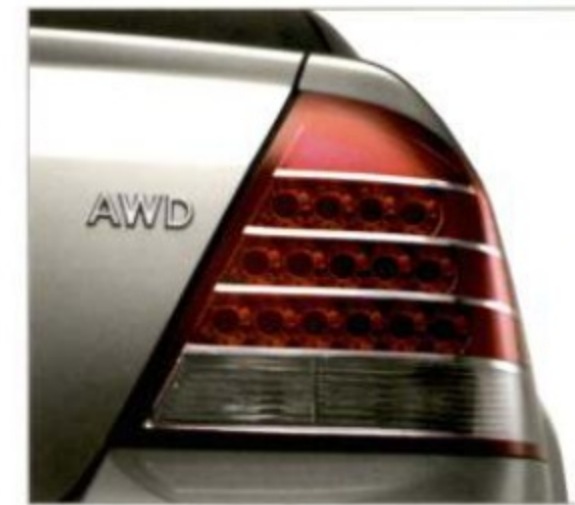
RELAX WITH BEST-IN-CLASS REAR-SEAT COMFORT  
41.9" OF LEG ROOM AND 5.8" OF KNEE CLEARANCE



[A] SPACE ARCHITECTURE™	Helps divert crash forces under the seats, away from occupants	[F] SIDE-CURTAIN AIRBAGS	Part of the available Safety Canopy System, deployed in certain side-impact or rollover events
[B] PATENT-PENDING FRONT BUMPER PLATE	Reduces intrusion into the passenger compartment	[G] LASER-WELDED STEEL SHEETS	Add extra strength to front frame rails
[C] DUAL-STAGE FRONT AIRBAGS	Part of the Personal Safety System® that enhances protection for the driver and front passenger	[H] RIGID STRUCTURE	Channels crash forces into a high-strength steel "ring of protection" that surrounds the passenger compartment
[D] FRONT-SEAT SIDE AIRBAGS	Part of the available Safety Canopy™ System, deployed in certain side-impact or rollover events	[I] SIDE-INTRUSION DOOR BEAMS	Helps protect against passenger-compartment intrusion in certain side-impact collisions
[E] ADAPTIVE STEERING COLUMN	Minimizes effect of crash forces on the driver		



- SECURITY APPROACH LAMPS
- PERSONAL SAFETY SYSTEM
- FRONT-PASSENGER SENSING SYSTEM
- ADAPTIVE STEERING COLUMN
- FRONT-SEAT SIDE AIRBAGS
- SAFETY CANOPY SYSTEM
- REVERSE SENSING SYSTEM
- HID HEADLAMPS
- LED TAILLAMPS



Interested in security? Just check our references.

#### SECURITY AND SAFETY

Will it help protect me in an accident? Are there safety systems covering all occupants? When shopping for a new car today, these are often the first items on the checklist. In this critical area, Mercury Montego is establishing quite a list of its own:

- Montego is the only sedan to earn Insurance Institute for Highway Safety (IIHS) "Best Pick" status,\* plus the **government's highest 5-Star crash test safety rating in 4 categories** (including front and side impact) – without side airbags\*\*
- Montego is the first sedan in its class to offer the Safety Canopy™ System with an **exclusive rollover sensor**†

That's just the beginning. All 5 seat positions receive 3-point safety belts and all outboard positions receive adjustable head restraints. Advanced SPACE Architecture™ (Side Protection And Cabin Enhancement) employs a hydroformed cross-car beam that runs between the door frames. In a side-impact collision, a bend in the beam's middle serves as a trigger point for deformation, helping to divert crash forces underneath the seats and away from occupants.

**Occupant Protection Systems** On every Montego, the Personal Safety System® and Front-Passenger Sensing System (FPSS) offer enhanced protection for the driver and front passenger in certain frontal collisions. Utilizing a network of smart sensors, the deployment

level of the dual-stage front airbags is based on several criteria: whether a front passenger is present and his/her weight range; the position of the driver's seat; whether the front safety belts are in use; and the overall severity of the crash. These details help the systems deploy the front airbags in just the right manner, at just the right time. To further minimize the effect of crash forces on the driver, Montego's adaptive steering column is smart enough to collapse in different ways depending on the driver's seat position and whether the front safety belts are in use.

**Safety Package** Available on Montego Luxury and Premier, this comprehensive system includes front-seat side airbags for enhanced chest protection, and Safety Canopy System side-curtain airbags that cover the windows on both rows of seats for **enhanced head protection for all outboard passengers**. If a rollover is starting or a side-impact collision is underway, sensors determine within milliseconds which of the airbags to deploy.

**Reverse Sensing System** Audibly alerts you to items behind Montego when backing up. Available on both models.

**Highly Illuminating** High-Intensity Discharge (HID) headlamps produce bright, white light for excellent down-the-road vision. Light-Emitting Diode (LED) taillamps illuminate quicker than traditional lamps, and make quite a design statement when lit.

\*Based on 40-mph frontal offset crash test. \*\*Excludes other Ford Motor Company vehicles. Front-seat side airbags are available. †Standard 5-passenger Large Car class.





STANDARD FEATURES

POWERTRAIN/FUNCTIONALITY

3.0L Duratec 30 24-valve DOHC V-6 engine  
6-speed automatic transaxle  
Front-wheel drive  
4-wheel disc Anti-lock Brake System (ABS)

EXTERIOR

Automatic headlamps with on/off delay  
Fog lamps  
High-Intensity Discharge (HID) headlamps  
Keyless-entry keypad  
Light-Emitting Diode (LED) taillamps  
Power, heated sideview mirrors with security approach lamps  
Remote keyless-entry system with 2 key fobs

INTERIOR

Accessory delay  
Auto-dimming rearview mirror  
Command Seating™  
Dual-zone Electronic Automatic Temperature Control  
Front-passenger's fold-down seatback  
Front-row center console with armrest, storage and 2 cupholders  
Leather-wrapped shift knob  
Leather-wrapped steering wheel with secondary audio and speed controls and satin-aluminum cuffs  
Message center/trip computer with compass  
Overhead console with dome light, map light and sunglasses holder  
Power door locks  
Power remote trunk release  
Power windows with one-touch-up/-down driver's-side feature  
Rear-seat 60/40 split fold-down seatback with fold-down armrest with cupholders  
Tilt-adjustable steering column  
Woodgrain appliqué on center stack, instrument panel and console

SECURITY/SAFETY

Belt-Minder® safety belt reminder  
Child-safety rear door locks  
Lower anchors and tether anchors for child-safety seats (LATCH) for rear-seat positions  
Personal Safety System® with dual-stage driver and front-passenger airbags,\* crash severity sensor, front safety belt usage sensors, driver's-seat position sensor, Front-Passenger Sensing System, front safety belt pretensioners and safety belt energy-management retractors  
SecuriLock® passive anti-theft system  
SPACE Architecture™ – Side Protection And Cabin Enhancement

AVAILABLE FEATURES

■ LUXURY ■ PREMIER □ AVAILABLE

POWERTRAIN/FUNCTIONALITY

□ AWD with Continuously Variable Transaxle (CVT)  
□ Traction Control

EXTERIOR

■ 17" 7-spoke painted-aluminum wheels  
■ 18" 15-spoke machined-aluminum wheels  
■ P215/60R17 tires  
■ Pirelli P225/55R18 tires  
■ Power, heated sideview mirrors with security approach lamps and memory

INTERIOR

■ 6-way power driver's seat with manual lumbar  
■ 8-way power driver's seat (including power recline) with manual lumbar and memory  
■ 4-way power front-passenger's seat (including power recline) with manual lumbar  
■ AM/FM stereo/single-CD player  
■ Audiophile® Sound System with AM/FM stereo/6-disc in-dash CD changer with MP3 capability  
■ Cloth seat trim  
■ Leather seat trim  
■ Heated front seats  
■ Navigation System with 6.5" color LCD screen\*\*  
■ Outside temperature display  
■ Power-adjustable pedals with memory  
□ Power moonroof with one-touch-open/-close  
□ Rear-Seat DVD Entertainment System†  
■ Rear-seat storage compartment in armrest with 2 cupholders (included with leather trim)  
■ Trunk cargo net  
■ Universal Garage Door Opener in overhead console

SECURITY/SAFETY

□ Reverse Sensing System

PACKAGES

□ Comfort Package – AM/FM stereo/6-disc in-dash CD changer with MP3 capability, 8-way power driver's seat including power recline, and 4-way power front-passenger's seat including power recline  
□ Safety Package – Safety Canopy™ System for front and rear passengers, with rollover sensor, and front-seat side airbags

Audiophile is a registered trademark of Audiophile, Inc.

\*Always wear your safety belt and secure children in the rear seat. \*\*Not available in Alaska. †Not available with power moonroof or single-CD player.



DIMENSIONS

Engine	3.0L Duratec 30 24-valve DOHC V-6
Horsepower @ rpm	203 @ 5750
Torque: lb.-ft. @ rpm	207 @ 4500
Compression ratio	10.0:1
Transaxle	Front-Wheel Drive 6-speed automatic All-Wheel Drive CVT
Axle ratio	Front-Wheel Drive 3.46:1 All-Wheel Drive 5.19:1
Curb weight (lbs.)	Front-Wheel Drive 3670 All-Wheel Drive 3820
Dimensions (in.) front/rear	Head room 39.4/38.7 Leg room 41.3/41.9 Shoulder room 57.8/57.6 Hip room 53.7/53.7 Length 200.7 Width 74.5 Height 60.1 Wheelbase 112.9 Track width 64.6/65.0
Cargo volume (cu. ft.)	21.2
Seating capacity	5
EPA-estimated fuel economy (mpg) city/hwy.	6-speed automatic/FWD 21/29 CVT/AWD 19/26



112.9"  
200.7"



74.5"

60.1"

RESOURCES AND SERVICES



Get the ride you want. Whether you plan to lease or finance, you'll find the choices that are right for you at Ford Credit. Ask your Lincoln Mercury Dealer for details or check us out at [www.fordcredit.com](http://www.fordcredit.com)

FORD EXTENDED SERVICE PLAN

For a purchase or lease, the Ford Extended Service Plan (ESP) gives you "Peace-of-Mind" protection designed to cover key vehicle components and protect you from the cost of unexpected repairs. Ask your Lincoln Mercury Dealer for an ESP backed by Ford Motor Company and honored at all Ford and Lincoln Mercury dealerships.

FORD MOTOR COMPANY INSURANCE SERVICES

Choose the insurance program that's designed for your vehicle – Ford Motor Company Insurance Services. Our program helps you receive the rates and service you deserve. Call (877) 367-3847 or visit us at [www.fordvip.com](http://www.fordvip.com) for a no-obligation quote. Insurance offered by American Road Services Company (in CA, American Road Insurance Agency), a licensed agency and subsidiary of Ford Motor Company.

Comparisons based on 2005 competitive models, publicly available information and Ford certification data at time of printing. Following the publication of this brochure, certain changes in standard equipment, options, prices and the like, or product delays may have occurred which would not be included in these pages. Your Lincoln Mercury Dealer is your best source for up-to-date information. Lincoln Mercury reserves the right to change product specifications at any time without incurring obligations. Options shown or described in this brochure are available at extra cost and may be offered only in combination with other options or subject to additional ordering requirements or limitations.

For a personal demonstration of Montego or other 2006 Mercury vehicles, visit your Lincoln Mercury Dealer today. Ask about the Mercury Commitment,® a comprehensive benefits package for all new Mercury owners.



WHEELS



17" 7-SPOKE PAINTED-ALUMINUM  
Standard on Luxury



18" 15-SPOKE MACHINED-ALUMINUM  
Standard on Premier

COLOR PALETTE COMBINATIONS

■ LUXURY ■ PREMIER ■ LUXURY/PREMIER

CLOTH SEAT TRIM

Pebble Two-Tone

Shale Two-Tone

LEATHER SEAT TRIM

Charcoal Black with Mini-Perforated Inserts

Pebble Two-Tone with Mini-Perforated Inserts

Shale Two-Tone with Mini-Perforated Inserts

EXTERIOR PAINT COLORS

- ■ Oxford White
- ■ Vivid Red
- ■ Merlot
- ■ Light Tundra
- ■ Dark Blue Pearl
- ■ Light French Silk
- ■ Satellite Silver
- ■ Dark Shadow Grey
- ■ Black

PLEASE REFERENCE ACCOMPANYING COLOR PALETTE TO VIEW EXTERIOR PAINT COLORS AND SEAT TRIM.

Mercury uses clearcoat paint for beauty and protection. All exterior colors are Metallic paint except for Oxford White and Black.

## 06 MERCURY MONTEGO



"It's the details that make this car work."

- *AutoWeek*



**MERCURY** | NEW DOORS OPENED

[mercuryvehicles.com](http://mercuryvehicles.com)