

2024 SANTA FE



Preferred Hybrid

• 7-Passenger AWD

[Build & Price](#)



Preferred Hybrid with Trend Package

• 7-Passenger AWD

[Build & Price](#)



XRT

• 7-Passenger AWD

[Build & Price](#)



Luxury

• 7-Passenger AWD

[Build & Price](#)

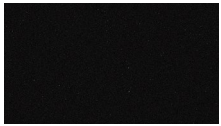


Ultimate Calligraphy

• 6-Passenger AWD

[Build & Price](#)

Exterior colours*



Abyss Black

Available on Preferred and Trend



Creamy White

Available on Preferred and Trend



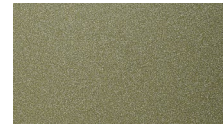
Magnetic Grey

Available on Preferred and Trend



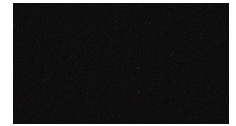
Pebble Blue

Available on Preferred and Trend



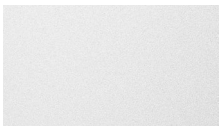
Ocado Green

Available on Preferred and Trend



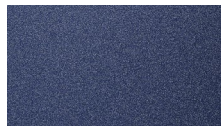
Twilight Black

Available on XRT, Luxury and Ultimate Calligraphy



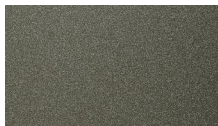
Serenity White

Available on XRT, Luxury and Ultimate Calligraphy



Atlantis Blue

Available on XRT, Luxury and Ultimate Calligraphy with black interior



Rockwood Green

Available on XRT, Luxury with black interior, and Ultimate Calligraphy



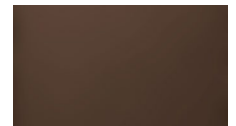
Terracotta Orange

Available on XRT, Luxury and Ultimate Calligraphy with black interior



Hampton Grey

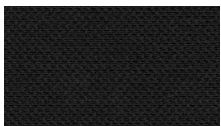
Available on XRT, Luxury and Ultimate Calligraphy with black interior



Earthy Brass

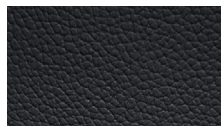
Available on XRT, Luxury and Ultimate Calligraphy with black interior

Interior colours*



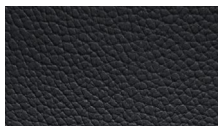
Black cloth

Available on Preferred



Black leatherette

Available on Trend and XRT



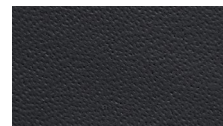
Black leather

Available on Luxury



Pecan brown leather

Available on Luxury



Black premium nappa leather

Available on Ultimate Calligraphy



Forest green / beige premium nappa leather

Available on Ultimate Calligraphy

Wheels



18" alloy wheels

Preferred model only



18" black alloy wheels

XRT model only



20" alloy wheels

Trend and Luxury models only



21" black alloy wheels

Ultimate Calligraphy model only

Features.

Performance	Preferred Hybrid	Preferred Hybrid with Trend Package	XRT	Luxury	Ultimate Calligraphy
Smartstream 1.6L Turbo GDI Hybrid engine	•	•			
Smartstream 2.5L Turbo GDI engine		•			
6-speed Automatic transmission with SHIFTRONIC® manual mode	•	•			
8-speed Dual Clutch Transmission (wet-type) with SHIFTRONIC® manual mode		•	•	•	•
HTRAC™ All-Wheel Drive (AWD)	•	•	•	•	•
Engine idle stop-and-go	•	•	•	•	•
Electric Parking Brake with Vehicle AutoHold	•	•	•	•	•
Multi-terrain Control Modes: Snow; Mud; Sand	•	•	•	•	•
Drive Mode Select: Comfort; Eco; Sport; Smart	•	•	•	•	•
Interior					
Dual-zone automatic climate control with defogger	•	•	•	•	•
Leather-wrapped heated steering wheel	•	•	•	•	•
8-way power driver's seat	•	•	•	•	•
8-way power passenger's seat			•	•	•
4-way power driver's seat with lumbar support				•	•
Integrated Memory System (IMS) for driver's seat and mirror positions				•	•
60/40 split fold-flat (2nd-row) with adjustable head restraint	•	•	•	•	•
3rd-row fold-flat seats	•	•	•	•	•
2nd-row captain's chairs				•	•
Heated seats (front-row)	•	•	•	•	•
Heated seats (2nd-row)				•	•
Ventilated seats (front-row)				•	•
Leatherette seating surfaces		•	•		
Leather seating surfaces				•	
Premium Nappa leather seats					•
Front power windows with auto up/down and pinch protection		•	•	•	•
Front and rear power windows with auto up/down and pinch protection					•
Autodimming rearview mirror with HomeLink®				•	•
Interior ambient lighting (64 colours)				•	•
Manual rear sunshades			•	•	•
Technology					
Proximity key with remote button start	•	•	•	•	•
BlueLink® connected vehicle system	•	•	•	•	•
Bluetooth® hands-free system	•	•	•	•	•
12.3" Infotainment touch screen	•	•	•	•	•
12.3" Infotainment touch screen with Navigation		•	•	•	•
12.3" Digital instrument cluster		•	•	•	•
Type-C USB outlets; 2x front (1x power/data, 1x power); 2x rear charge ports	•	•	•	•	•
Type-C USB outlets; 2x third-row		•	•	•	•
115V power outlet				•	•
12-speaker Bose® premium audio					•
Digital Key		•	•	•	•
Ultraviolet (UV-C) sterilization tray				•	•
Single wireless charging pad		•	•	•	•
Dual wireless charging pad					•
Fingerprint recognition system					•
Exterior					
Automatic LED headlights	•	•	•	•	•
LED Daytime Running Lights (DRL)	•	•	•	•	•
LED Taillights	•	•	•	•	•
LED Roof-mounted brake light (CHMSL)	•	•	•	•	•
Proximity-activated smart lift gate	•	•	•	•	•
Roof rack side rails	•	•	•	•	•
Rear windshield wiper	•	•	•	•	•
18" alloy wheels	•		•		
20" alloy wheels		•		•	
21" alloy wheels					•
All-terrain tires					•
Body-colour side mirrors with turn signal indicators	•	•	•	•	•
Power-folding side mirrors				•	•
Black side mirror caps			•		
C-pillar assist handle			•		•
Rain-sensing windshield wipers				•	•
Calligraphy-exclusive front grille and bumper					•
XRT-exclusive front skid plate and rear bumper garnish			•		
XRT-exclusive side door cladding			•		
Single-panel power sunroof			•		
Dual-panel power sunroof (fixed rear panel)		•	•	•	•
Safety					
Intelligent Speed Limit Assist (ISLA)	•	•	•	•	•
Downhill Brake Control and Hill-start Assist Control	•	•	•	•	•
Anti-lock Braking System (ABS) with Electronic Brake-force Distribution (EBD) and Brake Assist (BA)	•	•	•	•	•
Vehicle stability management (VSM)	•	•	•	•	•
Forward Collision-Avoidance Assist 1 (FCA 1)	•	•	•	•	•
Forward Collision-Avoidance Assist 2 (FCA 2)	•	•	•	•	•
Adaptive Cruise Control (ACC) with stop-and-go capability	•	•	•	•	•
Lane Following Assist 2 (LFA 2)	•	•	•	•	•
Lane Keeping Assist (LKA)	•	•	•	•	•
Driver Attention Warning (DAW)	•	•	•	•	•
High Beam Assist (HBA)	•	•	•	•	•
Rear Cross-traffic Collision-avoidance Assist (RCCA)	•	•	•	•	•
Rear Occupant Alert (ROA)	•	•	•	•	•
Rear Occupant Alert (with ultrasonic sensors)		•	•	•	•
Safe Exit Assist (SEA)	•	•	•	•	•
Parking Distance Warning - Forward / Reverse (PDW-F/R)	•	•	•	•	•
Parking Collision-avoidance Assist - Reverse (PCA-R)		•	•	•	•
Rearview camera	•	•	•	•	•
Surround View Monitor (SVM)				•	•
Blind-spot Collision Warning	•	•	•	•	•
Blind View Monitor (BVM)				•	•
Blind-spot Collision-avoidance Assist (BCA)					•
Remote Smart Parking Assist (RSPA)					•
Head-Up Display (HUD)					•

5 YEAR	100,000 km Comprehensive Limited Warranty [†]	5 YEAR	Unlimited km Roadside Assistance Program ^{††}
5 YEAR	100,000 km Powertrain Warranty	8 YEAR	160,000 km Hybrid System ^{†††}
5 YEAR	100,000 km Emission Warranty		

One of the best-backed warranties in Canada.

You will see that a number of our vehicles have received multiple awards from the most reputable third-party organizations, so you can take their word when it comes to the quality of our vehicles. This quality is equally matched by the quality of our warranty. We stand confidently behind our products to give you ultimate peace of mind with a 5-year/100,000 kilometre Comprehensive Limited Warranty[†]. We also provide a 5-year/Unlimited kilometre Roadside Assistance Program^{††} featuring flat tire changing, lockout service and more. Just one toll-free call away, 24 hours a day.

Hyundai Auto Canada Corp.
hyundaicanada.com

