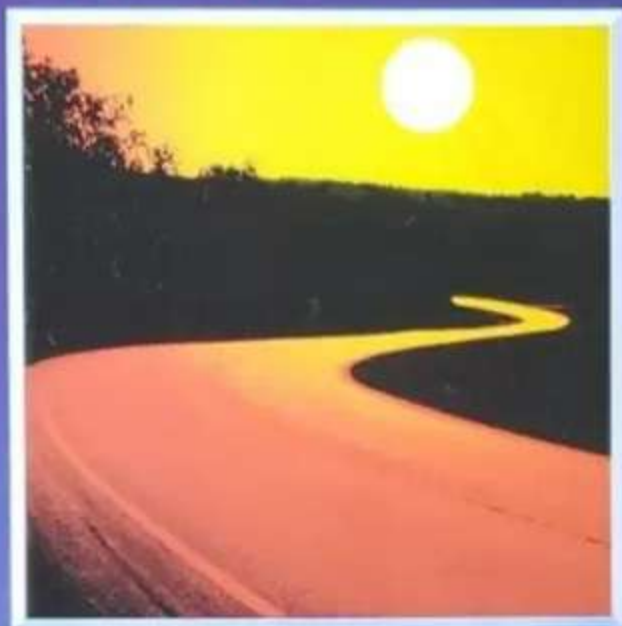


D O D G E

CARS & TRUCKS



1990

The spirit of exceptional family transportation is right here. It's a mid-size car with outstanding roominess, keen performance, and practical affordability. Choose Dodge Spirit, a full five-seater, with seating for six optional, powered by a fuel-efficient 2.5-litre EFI balance-shaft engine, or optional 3.0-litre V6; Spirit LE featuring premium front seats with centre armrests and driver's adjustable lumbar support; or the nimble response of Spirit ES, with standard turbo power, four-wheel disc brakes and 15-inch cast aluminum wheels. Dodge Spirit. The family car built for the long run.



*Room and
comfort for the
whole family.
performance
for the
enthusiast.*



DODGE SPIRIT SELECTED STANDARD AND OPTIONAL FEATURES	Dodge Spirit LE	Dodge Spirit ES	Dodge Spirit ES
AIR BAG SYSTEM - Driver side only	O	O	O
AIR CONDITIONING - Manual	O	O	O
BRAKES - Power-assisted vented front disc, self-adjusting rear drum	S	S	NA
Power-assisted vented 4-wheel disc	NA	NA	S
CHILD-SEAT ANCHORAGE PRACTISES	S	S	S
CORROSION PROTECTION - Extensive use of galvanized steel, zinc body cavity treatment, stone-chip-resistant coating	S	S	S
DEFROSTER - Electric, rear window; DEMISTERS - Front side windows	S	S	S
DOOR LOCKS - Basic child-protection	S	S	S
EXHAUST SYSTEM - Stainless steel	S	S	S
HEATER AMPS - Halogen, automatic daytime running lamps	S	S	S
POWER ASSISTS - Door locks, mirrors (standard and optional), driver seat	O	O	O
RADIOS - Electronically-tuned, with digital readout and clock	S	S	S
AM stereo/AM stereo, 2 speakers or speakers on LE	S	S	NA
AM stereo/FM stereo cassette, 4 speakers	O	O	S
AM stereo/FM stereo, Chrysler Infinity™ II	O	O	O
AM stereo/FM stereo, Chrysler Infinity™ II	NA	O	O
WINDOW RELEASES - Brake (left hand and right door)	S	S	S
SLAT BELTS - 3-point shoulder-lap, 2 front, 2 rear lap belts by centre passenger	S	S	S
SPEED CONTROL - Electronic, with steering wheel-mounted controls	O	S	S
STEERING COLUMN - 6-spoke	O	S	S
STEERING - Power-assisted, rack-and-pinion, 16:1 ratio	S	S	S
SUSPENSION - Front ride and handling, one coil spring front and rear gas-charged shock absorbers	S	S	S
TRIP COMPUTER - Also "Econofuel" function	NA	NA	S
WHEELS - 15" cast aluminum	O	O	S
WINDSHIELD WIPERS - Variable-speed, intermittent	S	S	S

S - Standard Equipment O - Optional Equipment NA - Not Available
*Some AM stereo broadcasting may not be compatible with this radio.

MAJOR DIMENSIONS	4-Door Sedan	
	mm	in.
Wheelbase	2625	103.3
Overall Length	4400	173.2
Overall Width	1730	68.1
Overall Height	1480	58.3

FRONT WHEELDRIVE ENGINES AND TRANSMISSIONS	2.5-litre 4-cyl. SOHC Balance-Shift EFI	2.5-litre 4-cyl. Turbo SOHC MPI Turbo	3.0-litre V6 SOHC 4-2
	Transmission and CITY ¹ Availability	5-Speed Manual - Std	5-Speed Manual - Std
3-Speed Aut. - Cpt.	2.0	2.0	NA
4-Speed Aut. - Cpt.	3.0	3.0	NA
5-Speed Aut. - Cpt.	NA	NA	3.0

MPG - Miles Per Gallon SOHC - Single Overhead Camshaft NA - Not Available
MPI - Multi-Point Injection Fuel Injection SOHC - Single Overhead Camshaft
CPT - Chrysler Performance Transmissions
CITY - In city driving only. Highway and combined driving figures are available in the owner's manual.

THIS CHRYSLER FINANCE PLAN IS A FINANCING AND LEASING PROGRAM. FINANCING AND LEASING ARE AVAILABLE ONLY TO CREDITWORTHY BUYERS. FINANCING AND LEASING IS SUBJECT TO CREDIT REVIEW BY CHRYSLER FINANCE CORPORATION.

*Always the manufacturer's price. The price variations shown in this advertisement have been updated. All new Dodge for 1993. Before buying, check the actual dealer's price. Dealer price is subject to change without notice.

Real value is a matter of getting what you want for what you can afford. And what drivers want today is engineering integrity that translates into reliable day-to-day performance, easy handling and that personal element of comfort and style. The highly acclaimed Colt 200 models meet those expectations with impressive packages of engineering and styling features — at prices that mean real value. Colt 200 comes standard with the proven 1.5 litre fuel-efficient engine and slick five-speed manual — or optional automatic. A sporty 1.6 litre 16-valve DOHC engine is available in some models. Colt 200 3-door hatchback models have split fold-down rear seats for added versatility.



COLT 200 SELECTED STANDARD AND OPTIONAL FEATURES	200 L 3-Door 4-Door	200 GT 3-Door DL 4-Door	200 GLSX DOHC 3-Dr. 4-Dr.	200 LX LX DOHC 4-Door
AIR CONDITIONING	NA	O	O	O
BRKES - Power-assist, vented - front disc, rear drum - Power-assist, vented front, 4-wheel disc	S	S	NA	S
CHILD SEAT ANCHORAGE PROVISION (Akrak only)	S	S	S	S
CORROSION PROTECTION - - Extensive use of galvanized steel - lower body-side-underline steel - chip-resistant coating	S	S	S	S
DEFROSTER - Rear window - DEMISTER - Front side windows	S	S	S	S
DOOR LOCKS - Rear - child-protection (Akrak only)	S	S	S	S
EXHAUST SYSTEM - Stainless steel	S	S	S	S
HEADLAMPS - Halogen, daytime - running lights	S	S	S	S
REARBY RELEASES - Fuel door and - trunk lid/gate (NA L, DL 4-door)	S	S	S	S
SEATS - Front bucket, cloth inset, - reclining with adjustable head - restraints	S	NA	NA	NA
Front bucket, all-cloth seat trim, - seat lining	NA	S	NA	NA
Front bucket, luxury full-face cloth, - with dual recliners	NA	NA	NA	S
Sport front bucket, all-cloth seat - trim	NA	NA	S	NA
Rear seat, split folding (NA L, DL - 4-door)	S	S	S	S
SEAT BELTS - 3-point lap/shoulder - belts, front and outboard rear	S	S	S	S
SHIELD PANEL - Rear, removable on - LX only, optional S, 4-door	O	S	S	S
STEERING - variable torque, - rack and pinion - Power-assist, rack and pinion	S	S	NA	NA
O	O	O	S	S
SUSPENSIONS - independent, front - strut, rear trailing arm - Sport, with heavy-duty front - struts, rear coil springs	S	S	S	S
NA	NA	S	NA	NA
TIRES - Steel belted radial, black - sidewall	S	S	S	S
WIPER/WASHER - Rear window - (3-door only)	O	S	S	NA

S - Standard Equipment O - Optional Equipment NA - Not Available

MAJOR DIMENSIONS	Colt 200 3-Door Hatchback	Colt 200 4-Door Sedan
Wheelbase	2385 mm - 93.9 in.	2455 mm - 96.7 in.
Overall Length	4040 mm - 158.7 in.	4320 mm - 170.1 in.
Overall Width	1665 mm - 65.5 in.	1670 mm - 65.7 in.
Overall Height	1575 mm - 61.7 in.	1480 mm - 58.1 in.

FRONT WHEEL DRIVE ENGINES AND TRANSMISSIONS	1.3-litre 4-cyl. SOHC EFI	1.6-litre 4-cyl. DOHC - 16-Valve EFI
Engine Availability	L, DL, GL and LX	GL and LX with DOHC, and SX
Transmission - 5-Spd. Man.	Standard	Standard
3-Spd. Auto.	Optional	NA
4-Spd. Auto.	NA	Optional

Optional not available on GLT 1.6-litre automatic transmission.

NA - Not Available SOHC - Single Overhead Camshaft

DOHC - Double Overhead Camshaft S - Standard Equipment

COLT 100 SELECTED STANDARD AND OPTIONAL FEATURES	2-Door		DL		DL		CX	
	3-Door	4-Door	3-Door	4-Door	3-Door	4-Door	3-Door	4-Door
AIR CONDITIONING	NA	O	O	O	O	O	O	O
BRAKES - Power-assisted, front disc, rear drum	1	5	5	5	5	5	5	5
CHILD SEAT ANCHORAGE PROVISION*	1	5	5	5	5	5	5	5
CONSOLE - Floor with storage bin and cup	1	5	5	5	5	5	5	5
CORROSION PROTECTION - Extensive use of galvanized steel, lower body-side urethane stone chip-resistant coating	5	5	5	5	5	5	5	5
DEFROSTER - Rear window	1	5	5	5	5	5	5	5
DEWISERS - Front side windows	5	5	5	5	5	5	5	5
DOOR LOCKS - Rear (child-protection 14-door models)	5	5	NA	5	NA	5	NA	5
HEADLAMPS - Halogen, daytime running lights	5	5	5	5	5	5	5	5
RADIO - AM/FM stereo with 4 speakers	O	O	O	O	NA	NA	NA	NA
AM/FM stereo electronically tuned with cassette	NA	O	O	O	O	O	O	O
SEATS - Front bucket, low-back, vinyl with dual recliners	5	NA	NA	NA	NA	NA	NA	NA
Front bucket, low-back, cloth and vinyl with dual recliners	O	5	NA	NA	NA	NA	NA	NA
Front bucket, sport, full back cloth with dual recliners (NA DL 4-door)	NA	5	5	5	5	5	5	5
Rear, folding (NA DL 4-door)	5	5	5	5	5	5	5	5
SEAT BELTS - 3-point lap/shoulder, front and outboard rear	5	5	5	5	5	5	5	5
SHELL PANEL - Rear removable on 14-door	O	5	5	5	5	5	5	5
SUSPENSION - Independent, front strut, rear trailing arm	5	5	5	5	5	5	5	5
Tires with 140gms front shocks, heavy-duty air lines, fan	NA	NA	5	5	5	5	5	5
TRES - steel-belted radial, black sidewall	5	5	5	5	5	5	5	5

1 - Standard Equipment O - Optional Equipment NA - Not Available

MAJOR DIMENSIONS	Colt 100 3-Door Hatchback		Colt 100 4-Door Sedan	
	mm	in.	mm	in.
Wheelbase	1180	46.5	1260	49.6
Overall Length	1993	78.4	4295	169.1
Overall Width	1625	63.9	1620	63.8
Overall Height	1160	45.7	1360	53.1

FRONT WHEEL DRIVE ENGINES AND TRANSMISSES	1.6-litre 4-cyl. SOHC 2-barrel		1.6-litre 4-cyl. Turbocharged SOHC EFI	
	Standard	Optional	Standard	Optional
Transaxle	Standard	Optional	Standard	Optional
- 4-Speed Manual	Standard	Optional	Standard	Optional
- 5-Speed Manual	Standard	Optional	Standard	Optional
- 3-Speed Automatic	Standard	Optional	Standard	Optional

NA - Not Available SOHC - Single Overhead Camshaft EFI - Electronic Fuel Injection

SPARK OF INDEPENDENCE.



Colt 100, in four-door compact sedan or three-door hatchback, ignites an independent lifestyle for all kinds of people: as a first car to run to college, as a second car for the family, as an easy-on-the-bank-account alternative after the kids have flown the nest. Colt 100 is a no-nonsense combination of quality engineering, practical design and affordable choices.



Colt 100 four-door sedan offers a wide selection of interiors and accessories for your style of driving.



Colt 100 Turbo, right, combines peppy punch for the highway and three-door hatchback versatility.

OMNI TAKES ITS FUN SERIOUSLY.



Seating for five with four-door hatchback versatility. With only two on board, the rear seat folds down to double the available cargo space.

Omni offers comfortable standard low-back front seats or optional high-back sport buckets.



Whether shopping-and-going, or winding through back roads, front-wheel-drive Dodge Omni will take you with zeal. With its standard 2.2-litre EFI engine coupled to a five-speed manual or optional automatic, Omni has extra power and response that you might not expect from a car that is so affordable.

DODGE OMNI SELECTED STANDARD AND OPTIONAL FEATURES	Omni
AIR BAG SYSTEM - Driver side. Includes Sport steering wheel	O
AIR CONDITIONING - Bi-level	O
BRAKES - Power-assisted front disc, self-adjusting rear drum	5
CHILD SEAT ANCHORAGE PROVISION*	5
CONSOLE - Floor with shift lever housing. Includes utility box and storage light	5
CORROSION PROTECTION - Extensive use of galvanized steel, lower body-side urethane stone chip-resistant coating	5
DEFROSTER - Electric, rear window	5
EXHAUST SYSTEM - Stainless steel	5
HEADLAMPS - Halogen, daytime running lights	5
INSTRUMENTATION - Includes tachometer, trip odometer	5
RADIO - AM stereo/FM stereo, electronically tuned with digital clock	O
AM stereo/FM stereo-cassette electronically tuned with digital clock	O
SEATS - Bucket, cloth/leather, low-back with dual recliners and adjustable headrest	5
Sport bucket, cloth/leather, high-back with dual recliners	O
Rear fold-down	5
SEAT BELTS - 3-point shoulder/lap, 2 front and 2 rear; lap, rear center position	5
SHELL PANEL - Rear folding	5
STEERING - Manual, rack-and-pinion, 22:1 ratio	5
Power-assisted, 36:1 ratio	O
SUSPENSION - Front low-inertia, rear semi-independent trailing arm	5
TIRES - Steel-belted radial, All-Season	5
WINDSHIELD WIPERS - Variable-delay, intermittent	5
WIPER/WASHER - 1-lit/gal	5

MAJOR DIMENSIONS	3-Door	
	mm	in.
Wheelbase	2520	99.1
Overall Length	4045	163.2
Overall Width	1693	66.8
Overall Height	1345	53.0

FRONT WHEEL DRIVE ENGINE AND TRANSMISSION	2.2-litre SOHC EFI 4-cylinder	
	Standard	Optional
Transaxle and CRTR* Availability	Standard	Optional
- 5-Speed Manual	Standard	Optional
- 3-Speed Automatic	Standard	Optional

*CRTR - Crankshaft Conversion for High-Load Fuel Efficiency
SOHC - Single Overhead Camshaft **Overall Top Gear Ratio (CRTR) 0.71 - 1.00 (Standard Fuel Injection)



Caravan, the original mini-van, was a breakthrough in automotive ingenuity. Today, Caravan remains the standard that the others follow. Start with easy-to-handle front-wheel drive, and a clear view of traffic all around. Check the impressive interior space, with the versatility of five- or seven-passenger seating, depending on model. Compare engine availability: fuel-efficient 2.5-liter four-cylinder standard, sporty 2.5-liter Turbo or smooth, responsive 3.0-liter V6 optional. And for even more space than standard-length Caravan, consider Grand Caravan. More legroom, more cargo space. If you start with Caravan quality, you wind up with the best.



DODGE CARAVAN SELECTED STANDARD & OPTIONAL FEATURES	Caravan			Grand Caravan	
	SE	LE	LT	SE	LT
ABS (CONVERTIBLE) - 8 wheel	O	O	O	O	O
BRAKES - Power assisted front disc, self-adjusting rear drum with length sensing valve	S	S	S	S	S
CLIMATE CONTROL - Interior, one of gas-powered steel, liquid crystal, or other state-of-the-art climate control	S	S	S	S	S
DEFROSTER - Rear window	O	S	S	S	S
EXHAUST SYSTEM - Standard over	S	S	S	S	S
HEADLAMPS - Halogen	S	S	S	S	S
HEADLAMPS - Halogen	S	S	S	S	S
ILLUMINATED MIRROR - Rear	O	O	S	O	S
MPV - Traction	NA	O	S	O	S
RADIO - Electronically scanned with digital synthesizer and lock	S	S	S	S	S
SEEK - 100 stations	S	S	NA	S	S
ANTI-LOCK BRAKING SYSTEM - 4 wheel	O	O	S	O	S
PREVIOUS AIR CONDITIONING SYSTEM - 2 zone	NA	O	O	O	O
PREVIOUS AIR CONDITIONING SYSTEM - 2 zone	NA	O	O	O	O
SEATING PACKAGES - 3 passenger (1st & 2nd)	S	S	NA	NA	NA
SEATING PACKAGES - 4 passenger (2nd & 3rd)	NA	O	O	NA	NA
SEATING PACKAGES - 7 passenger (2nd & 3rd)	O	O	S	S	S
STEERING - Power assisted rack and pinion	S	S	S	S	S
TRAILER TOWING - Heavy-duty package with 1000 lb tongue weight	NA	O	O	O	O
WINDSHIELD WIPER - Variable speed, intermittent wiper, intermittent	S	S	S	S	S
WIPER WASH - 10 min. wiper, intermittent	S	S	S	S	S

O - Standard equipment, O - Optional equipment, NA - Not Available. *Using the same model body as the other minivans with 1000 lb.

MAJOR DIMENSIONS	Caravan		Grand Caravan	
	990	10	990	10
Wheelbase	282.1	272.0	302.0	294.0
Overall length	447.0	375.8	484.0	380.0
Overall width	69.0	72.0	69.0	72.0
Overall height	64.0	64.6	64.0	64.8

PREPARED - DRIVE ENGINES AND TRANSMISSIONS	2.5 liter	2.5 liter	3.0 liter	3.0 liter V6
	SE	SE	SE	SE

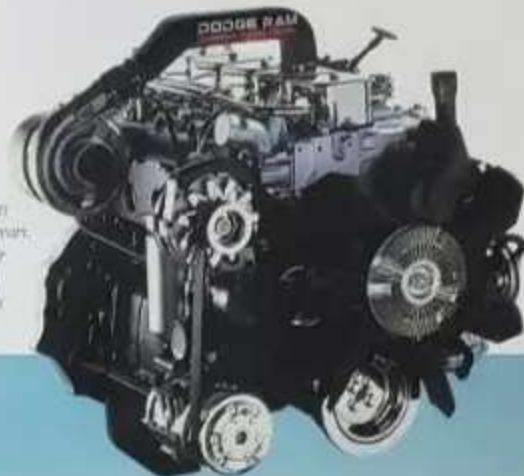
Availability	Standard	Optional	NA	NA
Caravan SE	Standard	Optional	Optional	NA
Grand Caravan SE	NA	NA	NA	Standard

TRANSMISSIONS	Availability			
	2.5 liter	2.5 liter	3.0 liter	3.0 liter V6
3-Speed Manual	Std	Std	Std	Std
3-Speed Auto	Opt	Opt	Opt	Opt
4-Speed Auto	Opt	Opt	Opt	Opt
Caravan SE	Std	Std	Std	Std
Grand Caravan SE	Std	Std	Std	Std

SE - Standard equipment, SE - Optional equipment, NA - Not Available. *Using the same model body as the other minivans with 1000 lb.

The Dodge Ram lineup for 1990 includes a whole stable of D-Series two-wheel-drive or W-Series 4x4 full-size pickups. On lighter-duty models, D & W 150 and value-oriented D & W 150S, there's a choice of box sizes: 2.0 m (6 1/2 ft.) or 2.4 m (8 ft.). 150 and 250 models are available in a new Club Cab version that adds two rear jump seats. Payload ratings run the gamut from a standard 720 kg (1590 lb.) on D150S to an optional 2485 kg (5475 lb.) on D350. There's get-tough power, too. A 3.9-litre EFI V6 is standard on D & W 150/150S and D250, with a 5.2-litre EFI V8 optional. D & W 350 offer the standard 5.9-litre EFI V8. And on both 250 and 350 conventional cabs, the Cummins 5.9-litre six-cylinder Turbo Diesel is available as an option.

Equipped with Cummins Turbo Diesel and single rear D150 limited for a trailer weight of up to 2945 kg (6500 lb.). Now that's hauling power!



RAM PICKUPS SELECTED STANDARD AND OPTIONAL FEATURES	D250 4x4 PICKUPS
AIR CONDITIONING	0
BRAKES - Power-assisted, front disc, rear drum. Rear anti-lock system	5
CORROSION PROTECTION - Extensive use of galvanized steel, lower body-side anti-rust stone (displacement coating, stainless steel inlays)	5
FUEL TANK - 83 L (21.8 imp. gal.), 114 L (30 imp. gal.) optional	5
GLASS - Tinted, all windows	5
HEADLAMPS - Halogen. Daytime running lights	5
MIRRORS - Outside, dual 57x77 (87 x 97 optional)	5
WINDSHIELD - Safety Tinted Glass and LE Decoer Tinted Low Free. Sunstrip Pump (club)	0
RADIO - AM stereo FM seven, electronically tuned with 2 speakers, digital clock (stereo optional)	5
SEATS - Bench, 5-passenger, vinyl (leather/leatherum cloth optional)	5
Club Cab only: Reinforced front bucket, cloth rear jump seat (2)	0
SEAT BELTS - Shoulderlap, front outboard (2), lap, center front and Club Cab rear	5
STEERING - Power-assisted	5

0 - Standard Equipment; 5 - Optional Equipment at extra cost.
 *Some Air items (load-lift) may not be compatible with this rating.

SELECTED SPECIFICATIONS		Cummins Diesel		Club	Club
		150	250		
Wheelbase	mm	2920	3325	3360	3785
	in.	115	131	133	149
Box Length	ft.	6.5	8	6.9	8
	Model Availability	150/150S	A8	150 2WD	150/250
Overall Length	mm	4845	5355	5305	5830
	in.	190.8	210.8	208.8	229.9
Payload Range* Maximum	kg	720	670	890	785
	lb.	1590	1475	1975	1735
Maximum (Optional)	kg	810	1485	—	1845
	lb.	1800	3275	—	4070
GVWR Range Maximum	kg	2360	2360	2720	2720
	lb.	5200	5200	6000	6000
Maximum (Optional)	kg	2485	4180	—	3660
	lb.	5500	9200	—	8100

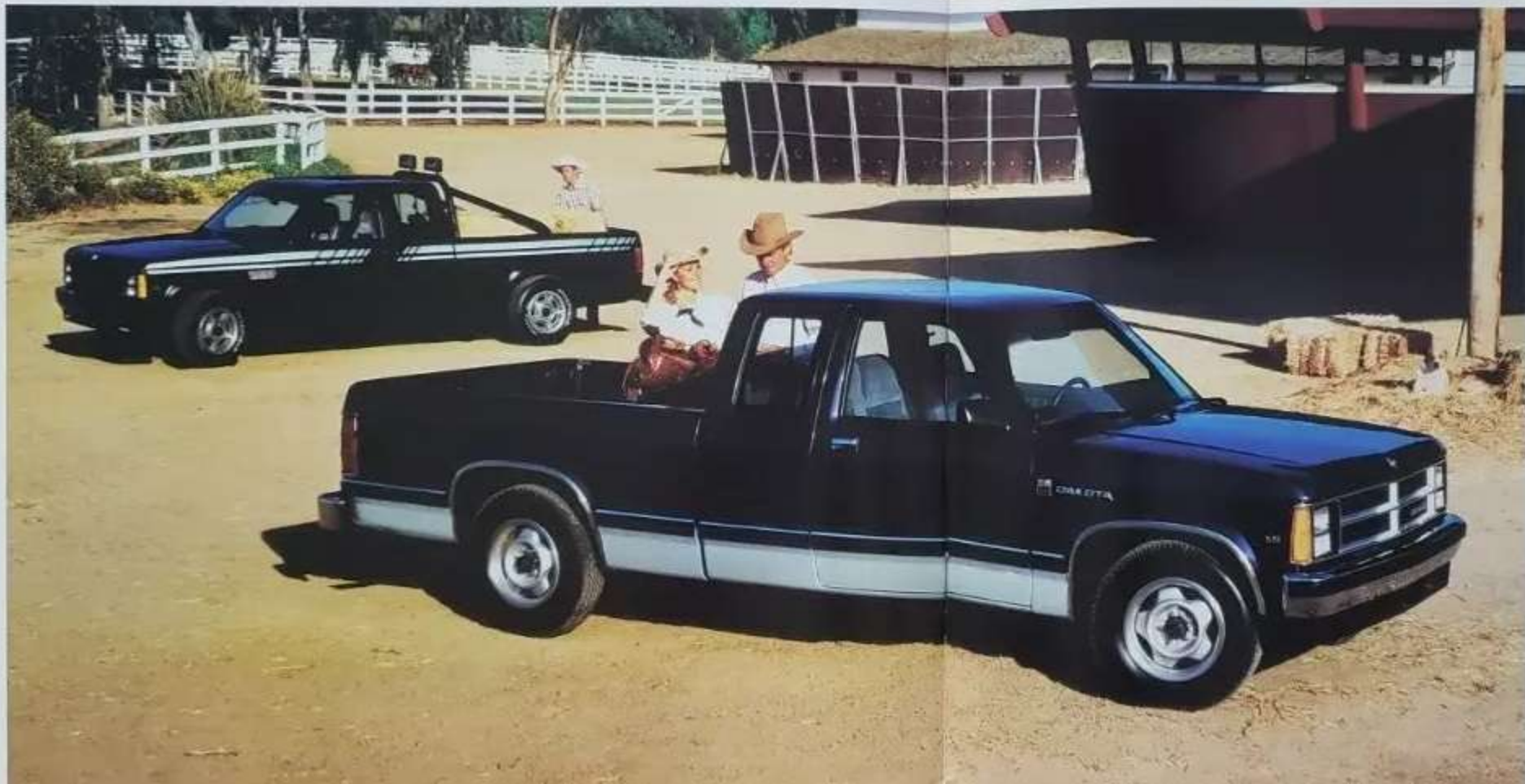
*Payload is limited by weight of equipment and additional optional equipment.

ENGINES	TRANSMISSIONS	DWS		
		150	250	350
3.9L (239 CID) V6 EFI	5-Speed Manual OD	0	NA	NA
3.9L (239 CID) V6 EFI	4-Speed Manual (NP422) HD	0	0	NA
3.9L (239 CID) V6 EFI	5-Speed Automatic	0	0	NA
3.9L (239 CID) V6 EFI	4-Speed Automatic OD	0	NA	NA
5.2L (318 CID) V8 EFI	4-Speed Manual OD	0	NA	NA
5.2L (318 CID) V8 EFI	4-Speed Manual (NP422) HD	0	0	NA
	5-Speed Automatic	0	0	NA
	4-Speed Automatic OD	0	0	NA
5.9L (360 CID) V8 EFI	4-Speed Manual (NP422) HD	0	0	5
	4-Speed Automatic OD	0	0	0
	5-Speed Automatic	NA	0	0

0 - Standard Equipment; 5 - Optional Equipment at extra cost; NA - Not available.
 HD - Heavy Duty; NA - Not Available; NP422 - 4-Speed Manual (NP422) HD; OD - Over-Drive; 0 - Optional Equipment at extra cost.
 *Based on Club Cab and 2500 cab. **Available on 4x4 models only.
 †Available on Club Cab and 2500 cab. ‡Available on 4x4 models only.

DURABLE, VERSATILE, DAKOTA.

Dakota offers work-hard, play-hard versatility. There's two-wheel drive or 4x4. There's a 2.0 m (6.5 ft.) box or a 2.4 m (8 ft.) box that has false-floor provision for flat-loading 4' x 8' sheets. There's optional payload capability of 905 kg (2000 lb.) on 4x4, 1155 kg (2550 lb.) on two-wheel drive. Club Cab models feature a full fold-up 60/40 split rear cushioned bench seat. Dakota Convertible two-wheel-drive Chassis Cab is available for conversion. And now there's Dakota Convertible.



DAKOTA SELECTED STANDARD AND OPTIONAL FEATURES	2WD/4WD Conventional	Club
AIR CONDITIONING - 16 level		□
BRACKETS - Power-assisted window lock disc, rear door, Anti-Lock, rear brake system		□
CLIMB/CLIMB PREVENTION - Expansion use of galvanized steel, front body-side underframe, steel chip-protect coating		□
EXHAUST SYSTEM - Stainless steel expansion pipe		□
FUEL TANK - 57 l (12.5 imp. gal.)		□
GLASS - 16.3 imp. gal.		□
GLASS - 16.3 imp. gal.		□
WHEELS - Duplex, steel 5" x 15" 16" optional		□
PACKAGES - SELECTED SE & LT Decal, Trailer Tie Pops, 5" x 10" x 10" (16-4)		□
RADIO - AM stereo* 16" stereo electronically tuned with 4-speaker cassette optional		□
SEATS - Conventional Cab/Convertible: Superseater bench, vinyl Deluxe Premium cloth optional		□
Club: 60/40 split bench, vinyl Deluxe Premium cloth optional		□
Club: Rear 60/40 flip-up seat 5"		□
Sport optional Club: Reclining cloth benches		□
STEERING - 2WD manual, rack-and-pinion		□
4WD power-assist		□
SUSPENSION - Front/Independent coil springs, shock absorbers, 4WD		□

□ - Standard Equipment □ - Optional Equipment
 *Some base series configurations may not be compatible with this radio.

SELECTED SPECIFICATIONS	Conventional & Convertible	Conventional	Club
Wheelbase	mm 2840	3128	3325
in.	112	124	131
Box length	ft. 6.5	8	6.0
Motor/Drive Availability	Base 2WD and 4x4 ^{1/2}	Base 2WD and 4x4	Base 2WD
Overall length	mm 4728	5196	5395
in.	185.8	204.4	212.9
Payload Range ^{2/3}			
Maximum	kg 385	385	605
in.	850	850	1350
Maximum	kg 915	915	915
Optional	kg 2550	2550	2000
CURR. Range			
Maximum	kg 1925	1925	2135
in.	4300	4300	4750
Maximum	kg 2675	2775	2545
Optional	kg 3900	4000	3600

¹Conversion with 4x4 is available in Sport Model only.
²Maximum payload depends on weight of equipment and additional equipment.

POWERTRAINS	Engine	Transmission
2WD - Standard	2.5L I4-134	5-sp. manual overdrive
- Optional	3.9L I4 V6	5-sp. manual overdrive, 4-sp. automatic, overdrive
4WD - Standard	2.5L I4-134	5-sp. manual overdrive with 2-sp. transfer case
- Optional	3.9L I4 V6	4-sp. automatic overdrive with 2-sp. transfer case

RAMCHARGER SELECTED STANDARD AND OPTIONAL FEATURES	AM150 4x4 2WD (4x4)
ABS (OPTIONAL EQUIPMENT)	□
BEAMS - Front disc, rear drum with ABS lock system	□
BUMPERS - Front and rear, heavy	□
CLIMBING PROTECTION - Extension over rear suspension rails, heavy duty shock absorbers, chip resistant coating	□
DAYTIME RUNNING LIGHTS	□
ENGINE BLOCK HEATER	□
GLASS - Tinted, all windows	□
HEADLINER - Durable, full size vinyl	□
MIRRORS - Inside, 10" diameter	□
Outside, dual	□
PRELUBES - SELECTED 14 Dodge, Dodge Ram, Jeep, Chrysler, Jeep, Ram	□
RADIOS - AM, AM/FM, FM stereo	□
AM stereo 3.5M stereo cassette	□
ROOF RACK	□
SEATS - Front bucket, high back, vinyl	□
Truck bucket, high back, 10" diameter vinyl	□
Rear bench, 3-passenger (4x4), forward for cargo capacity	□
SKID PLATES - Full size	□
Traction control (4WD only)	□
STEERING - Power assisted	□

□ - Standard Equipment □ - Optional Equipment
 *Some AM radios include battery, may not be compatible with other radios.

RAMCHARGER SPECIFICATIONS	AM150 2-Wheel Drive	AM150 4-Wheel Drive
STANDARD - DRIVEN	900 kg / 1980 lb	820 kg / 1805 lb
GVWR	2340 kg / 5150 lb	2720 kg / 5990 lb
Optional - Payload	—	795 kg / 1755 lb
GVWR	—	2935 kg / 6480 lb
ENGINE - Standard	5.2 litre EFI V8 electronic fuel injection	5.9 litre EFI V8 electronic fuel injection
Optional	—	—

MAJOR DIMENSIONS	AM150 4x4 2WD (4x4)
Wheelbase	2390 mm / 94.1 in.
Overall Length	4590 mm / 180.7 in.
Overall Width	2020 mm / 79.5 in.
Overall Height	2070 mm / 81.9 in.

DODGE RAMCHARGER.

Standard equipped, two-wheel drive Ramcharger can haul up to 1447 kg (3200 lb.) of load in trailer.



Full-size sport utility. Two-wheel-drive or 4x4 adventure with seating for five. Standard 5.2-litre EFI V8 engine delivers solid performance on a freeway or a backwoods trail. With optional 5.9-litre EFI V8 engine, both models offer great versatility in trailer towing.

RAM 50 TWO-WHEEL DRIVE.

Ram 50 is the Dodge contender in the field of compact imports. Owners appreciate the support of the Chrysler Canada dealer network plus the economy, nimble handling and compact dimensions of this practical workmate. Ram 50 models let you choose a 2670 mm (105.1 in.) wheelbase with 1.8 m (6 ft.) box or a 2950 mm (116.1 in.) wheelbase with a 2.2 m (7.25 ft.) box, the latter available with a 905 kg (2000 lb.) payload package. Also offered is Ram 50 SE, with special exterior and interior features that result in a practical small truck with a decidedly luxurious side to its character.

Shown is Dodge Ram 50 SE, sheeted with aftermarket tail window covers and rear bumper.



Dodge Ram 50 standard is equipped with a 2.4 litre Multi-point fuel-injected, four-cylinder engine and 14" cast steel wheels standard.



RAM 50 PICKUPS SELECTED STANDARD AND OPTIONAL EQUIPMENT	RAM 50 SWB & 4x4
BUMPERS - Rear, stepside (back on Ram 50, Chrome on SE)	□
CORROSION PROTECTION - 3-year Limited Warranty	□
EXHAUST SYSTEM - Stainless steel for extended life	□
LIGHT - Cargo	□
MIRRORS - Inside, in-house, day/night	□
Outside, dual, black	□
PACKING - 905 kg (2000 lb.) payload	□
SEATS - Bench, with 2 headrests, cloth and vinyl	□
STEERING - Power-assisted	□
STEERING COLUMN - 3x	□
WINDSHIELD WIPER/WASHER - 2-speed	□

SPECIFICATIONS	Short Wheelbase	Long Wheelbase
Standard - Payload	730	71900
Optional - GVWR	1610	1580000
Standard - GVWR	1890	1850000
Optional - GVWR	4265	4310000

MAJOR DIMENSIONS	Short Wheelbase		Long Wheelbase	
Wheelbase	mm	in.	mm	in.
Overall Length	4490	176.9	4815	189.5
Overall Width	1625	64.1	1625	64.1
Overall Height	1545	60.8	1545	60.8

CARAVAN C/V AND RAM VANS SELECTED STANDARD AND OPTIONAL FEATURES	CARAVAN C/V	RAM VANS
AIR CONDITIONING	O	O
BONES - Heavy reinforced front door, rear door, floor and back support rails; Luggage C/V	S	S
CORROSION PROTECTION - Extensive use of galvanneal steel, front body-side undercoating (Maximum Coating Caravan C/V)	S	S
ENGINE BLOCK HEATER	S	S
EXHAUST SYSTEM - Superior steel for maximum life	S	S
FUEL TANK - 71 L (18.7 imp. gal.)	S	N/A
FUEL TANK - 81 L (21.3 imp. gal.)	N/A	S
GLASS - Tinted side windows	S	O
HEADLAMPS - Halogen; daytime running lights	S	S
MIRRORS - Convex; dual	S	S
PACKAGES - Road Doctor Drive	O	N/A
Auto lock (12" wheelbase)	O	N/A
Van Customizer	O	O
POWER ASSISTS - Luggage release	O	N/A
Steering, brakes	S	S
ENGINE - Antismoke™ (M) diesel electronically tuned, diesel (3.9L)	S	S
SEATS - Seat with a tubergrip™	S	S
SPEED CONTROL - Electronic (OPTIONAL)	O	O
COLUMN - Yes	O	O
WHEELS - 14" steel wheel, aluminum	O	O
WINDSHIELD WIPERS - variable-rate intermittent	S	O
WIPERWASHER - Luggage gate, windshield wipers	O	N/A

VAN SPECIFICATIONS	CARAVAN C/V		RAM VANS	
	mm	in.	mm	in.
Wheelbase - Short	2840	112.0	2780	109.6
- Long	3025	119.1	3280	127.6
Length - Short A/B	4470	175.9	4445	175.0
- Long A/B	5040	198.3	5000	196.9
- Van	—	—	4665	183.2
Width	1815	71.0	1825	71.8
Height* - Maximum	1915	75.3	1900	74.8
- Maximum	2015	79.3	2000	78.7
DWMT - Maximum	3045 kg	6710 lb.	2275 kg	5000 lb.
- Maximum	2225 kg	4900 lb.	4080 kg	9000 lb.

*Based on weight of maximum load with full passenger capacity.

POWER TRAINS	CARAVAN C/V		RAM VANS		
	112" WB	119.1" WB	B150	B250	B350
Engine	2.2 L	2.2 L	2.9 L	3.9 L	3.9 L
Standard	115 hp	115 hp	115 hp	115 hp	115 hp
Optional	2.5 L Turbo MPI 142 hp	—	3.2 L 115 hp	3.2 L 115 hp	3.9 L 115 hp
Optional	—	—	3.9 L 115 hp	—	—
Transmission	5-Spd Manual C/D	5-Spd Auto C/D	5-Spd Manual C/D	5-Spd Auto C/D	4-Spd Auto C/D
Optional	5-Spd Auto	—	5-Spd Auto	5-Spd Auto	—
Optional	4-Spd Auto C/D	—	4-Spd Auto C/D	4-Spd Auto C/D	—

BUILT FOR HARD LIVING.

Dodge Ram Vans take on the big jobs with confidence. There's cargo space from 6985 L (246.7 cu.ft.) up to 8622 L (304.5 cu.ft.). Wheelbases of 2780 mm (109.6 in.) and 3240 mm (127.6 in.), payloads up to 2005 kg (4425 lb.). Caravan C/V offers front-wheel drive, power steering, plus front and rear gas-charged shocks for excellent driving comfort and handling ease. Choose between long or short wheelbase. There's a wide range of engines, from a 2.5-litre balance shaft four-cylinder to a 3.3-litre V6 with four-speed overdrive automatic transaxle.



PERSONAL ENTERPRISE.



For size, versatility and built-in quality that translates into many long years of faithful service, Ram Wagon is the choice. Available as regular Wagon or Maxiwagon, B250 and B350 share a 3240-mm (127.6-in.) wheelbase. Maxi is the ultimate space craft, with optional seating for 8, 12, or 15 in B350. Standard on B150 and B250 is a 3.9-litre EFI V6. Standard B350 power plant is a 5.2-litre EFI V8; optional on B250 and B350 is a 5.9-litre EFI V8 for optimum carrying and trailer-towing power. All Ram Wagons are backed by Dodge Truck's exclusive 7/115 powertrain and 7/160 corrosion protection plans.*

*See dealer for details.



RAM WAGON SELECTED STANDARD AND OPTIONAL FEATURES	B150 B250 B350 MAXI	B250 B350 MAXI
AIR CONDITIONING (Also available on B250 and B350 Maxiwagon)	O	O
BRACKETS - Heavy reinforced front door, rear door, floor and back support rails	S	S
CONSOLE - Front, includes compartments, cup and coin holders	O	O
CORROSION PROTECTION - Extensive use of galvanneal steel, inner body-side undercoating (Optional Coating)	S	S
DOORS AND GLASS - Side, dual hinges (Single sliding, optional)	S	S
Rear, single hinge (Dual hinge, optional)	S	S
EXHAUST SYSTEM - Superior steel for maximum life	S	S
FUEL TANK - 81 L (21.3 imp. gal.)	S	S
FUEL TANK - 127 L (33.6 imp. gal.)	O	O
HEADLAMPS - Halogen; daytime running lights	S	S
MIRRORS - Convex; dual	S	S
PACKAGES - Heavy-Duty Trailer Tow (N/A B150)	O	O
LE Drive	O	O
POWER ASSISTS - Steering, brakes	S	S
Door locks, front and side windows, front door	O	O
RADIOS - AM stereo/FM stereo electronically tuned, digital (N/A)	S	S
SEATS - 3 passenger, vinyl cloth	S	S
Cloth upholstery (in LE Drive Package)	O	O
8, 12, 15 seating available (seats to be installed)	O	O
SPEED CONTROL - Electronic (OPTIONAL, COLUMN - YES)	O	O
WINDSHIELD WIPERS - variable-rate intermittent	O	O

O - Standard Equipment O - Optional Equipment at extra cost
*Some AM radios may require the use of compatible stereo units.

WAGON SPECIFICATIONS	B150 Wagon		B250/B350 Wagon	
	mm	in.	mm	in.
Wheelbase	3276	128.6	3280	127.6
Overall Length	4344	170.9	5000	196.9
- Maxi	—	—	5667	222.9
Overall Width	2017	79.4	2027	79.8
Height** - Maximum	1914	75.3	1915	75.3
- Maximum	1915	75.3	1915	75.3

**Maximum height by weight of maximum load and additional equipment.

POWER TRAINS	B150	B250	B350
Engines			
3.9 L (2.2 L) EFI V6	S	S	N/A
3.2 L (1.9 L) EFI V6	O	O	S
5.9 L (3.5 L) EFI V8	N/A	O	O
Transmissions			
Standard	5-Spd Manual C/D	5-Spd Manual	5-Spd Auto
Optional	5-Spd Auto	5-Spd Auto	4-Spd Auto
Optional	5-Spd Auto	5-Spd Auto	4-Spd Auto
Optional	4-Spd Auto	4-Spd Auto	N/A

O - Electronic Fuel Injection V8 - Overhead Valve

Specifications, descriptions and illustrative material contained herein are based on authorized information. Although specifications, descriptions and illustrations were believed to be correct at the time this publication was approved for printing, accuracy cannot be guaranteed. Chrysler Canada Ltd. reserves the right to discontinue models or options at any time or change specifications and materials, equipment or design without notice and without incurring obligation.

Some equipment may not be exactly as illustrated in this publication. Some of the illustrative material contained herein may show equipment that is not standard and is available only at extra cost. Equipment referred to as available or optional may be at extra cost. Some options are required in combination with other options. For the price of the model with the equipment you desire or verification of specifications and equipment availability contained herein, see your Chrysler Canada Ltd. Dealer.

Some of the items shown on vehicles in this publication may be available only through retail organizations and establishments not connected with Chrysler Canada Ltd. Availability, price, quality and durability of these items rests solely with the respective manufacturers and their sales organizations, and Chrysler Canada Ltd. assumes no responsibility for their availability or their use.

WARRANTY COVERAGE THAT SPELLS CONFIDENCE

On Chrysler Canada's North-American-built cars, family wagons, trucks, and vans, upon expiration of the 12-month or 20,000-kilometre Basic Warranty, the Powertrain Warranty extends coverage up to 7 years or 115,000 kilometres* (7 years or 160,000 kilometres for truck diesel engines). The Corrosion Warranty covers body sheet metal against rust-through for 3 years (regardless of distance driven) and outer body panels are covered up to 7 years or 160,000 kilometres. See your Dealer for full details.

On Chrysler Canada's Colt 100, 200 and Ram 50 pickup models, upon expiration of the 3-year or 60,000-kilometre Basic Warranty, powertrain coverage continues up to 3 years or 80,000 kilometres. At the same time, the Corrosion Warranty covers body sheet metal against rust-through for 3 years (regardless of distance driven); the Corrosion Warranty also covers outer body panels against rust-through for 5 years, regardless of distance driven, on Colt 100 and Ram 50 and for 7 years or 160,000 kilometres on Colt 200. See your Dealer for full details.

*A deductible may apply.

LEASING — Any Chrysler, Dodge or Plymouth car or Dodge truck can be leased from your local Chrysler Dealer — The Leasing Professional.



Proud sponsor
of the
National
Hockey League



Physically
Challenged
Assistance
Program

520-0-C-3798

PRINTED IN CANADA

CHRYSLER CANADA 
Changing the landscape.