

SATURN



HOW A DIFFERENT KIND *of* COMPANY MAKES A DIFFERENT KIND *of* CAR.



**Ideas of many shapes and sizes, not one of them too small.**

When you drive a Saturn, you're sitting behind much more than the wheel of a car. You're behind the wheel of thousands of ideas—generated by thousands of people. Engineers. UAW team members. Sometimes even customers.

It's a process we like to call "Continuous Improvement." And it's our way of ensuring our cars remain just as original as the people who make and drive them.

Throughout the following pages, we'll be sharing some of the ideas, thoughts and philosophies that have helped make our cars truly different. We hope you'll come to the conclusion—as we have—that being different is actually the biggest idea of them all.

The refined engines of the 1999

Saturns include a crankshaft with  
new counterweights—which helps  
cut down on noise and vibration.



<b>ENGINE</b>	Powerful 1.9-liter, torque-heavy, dual-overhead-cam engine.
<b>TIRES</b>	Firestone® Firehawk GTA performance tires designed especially for Saturn.
<b>STEERING</b>	Variable-effort power steering adjusts to give more assist at slower speeds.



**MODEL**

**SATURN  
SC2**



**Introducing the world's first three-door coupe.  
(Or, the story of a retailer with a surprising penchant for design.)**

It all began with a Saturn retailer. After seeing an extra door pop up on so many of today's pickup trucks, he figured, "Why not on a Saturn coupe?"

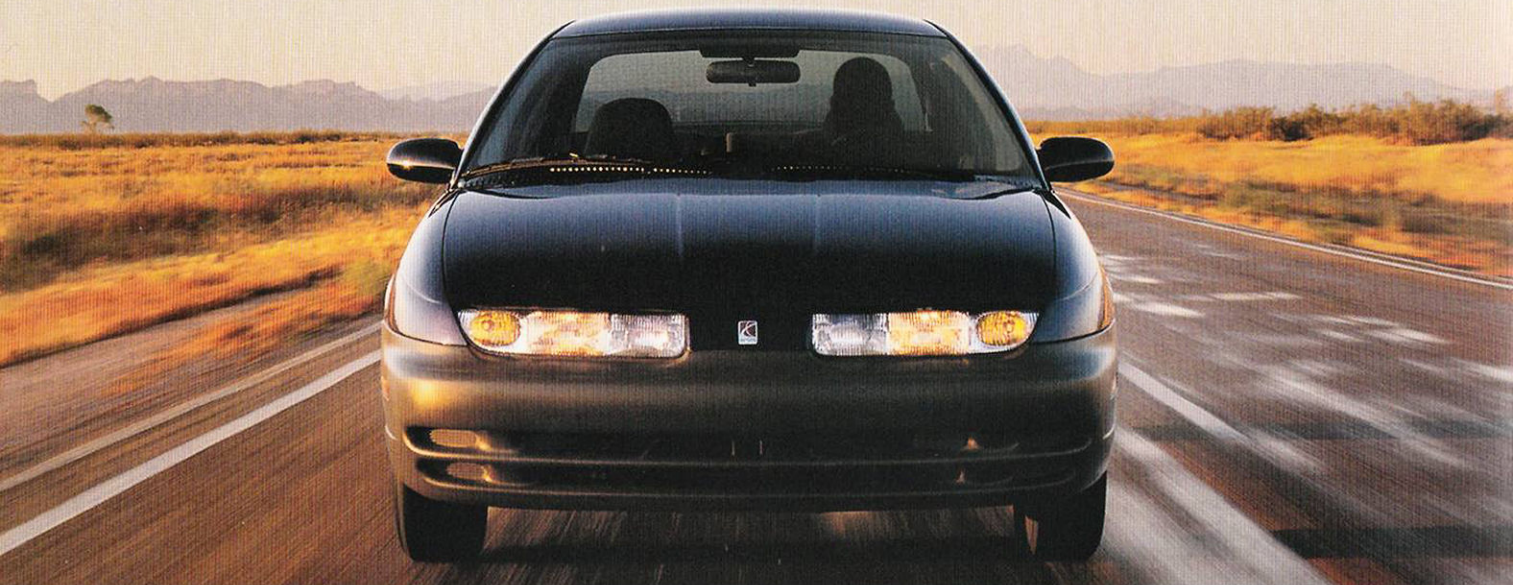
It was a brilliant idea. And it didn't take long for our Design Team to pounce on it. In fact, we all liked it so much, it's now a permanent feature on every coupe we make. Thanks, guys.

<b>ENGINE</b>	Spirited sequential-port fuel-injection engine yields 114 foot-pounds of torque at 2,400 rpm.
<b>MPG</b>	Estimated EPA fuel economy is 29 mpg city and 40 mpg highway, manual transmission.
<b>DRIVE</b>	Front-wheel drive provides excellent foul weather traction.



**MODEL**

**SATURN  
SL & SL1**



<b>ENGINE</b>	Aluminum-alloy 1.9-liter engine delivers 100 horsepower at 5,000 rpm.
<b>MPG</b>	29 mpg city and 40 mpg highway estimated EPA fuel economy, manual transmission.
<b>CARGO</b>	Generous 11.4 cubic feet of trunk space.



**MODEL**

**SATURN  
SC1**



<b>ENGINE</b>	Further refined 124-horsepower, 16-valve engine runs more smoothly, with greater fuel efficiency.
<b>SUSPENSION</b>	Sport-tuned suspension for excellent cornering and handling.
<b>GAUGES</b>	Performance gauge layout includes 130-mph speedometer, trip odometer and 8,000-rpm tachometer.



**MODEL**

**SATURN  
SL2**

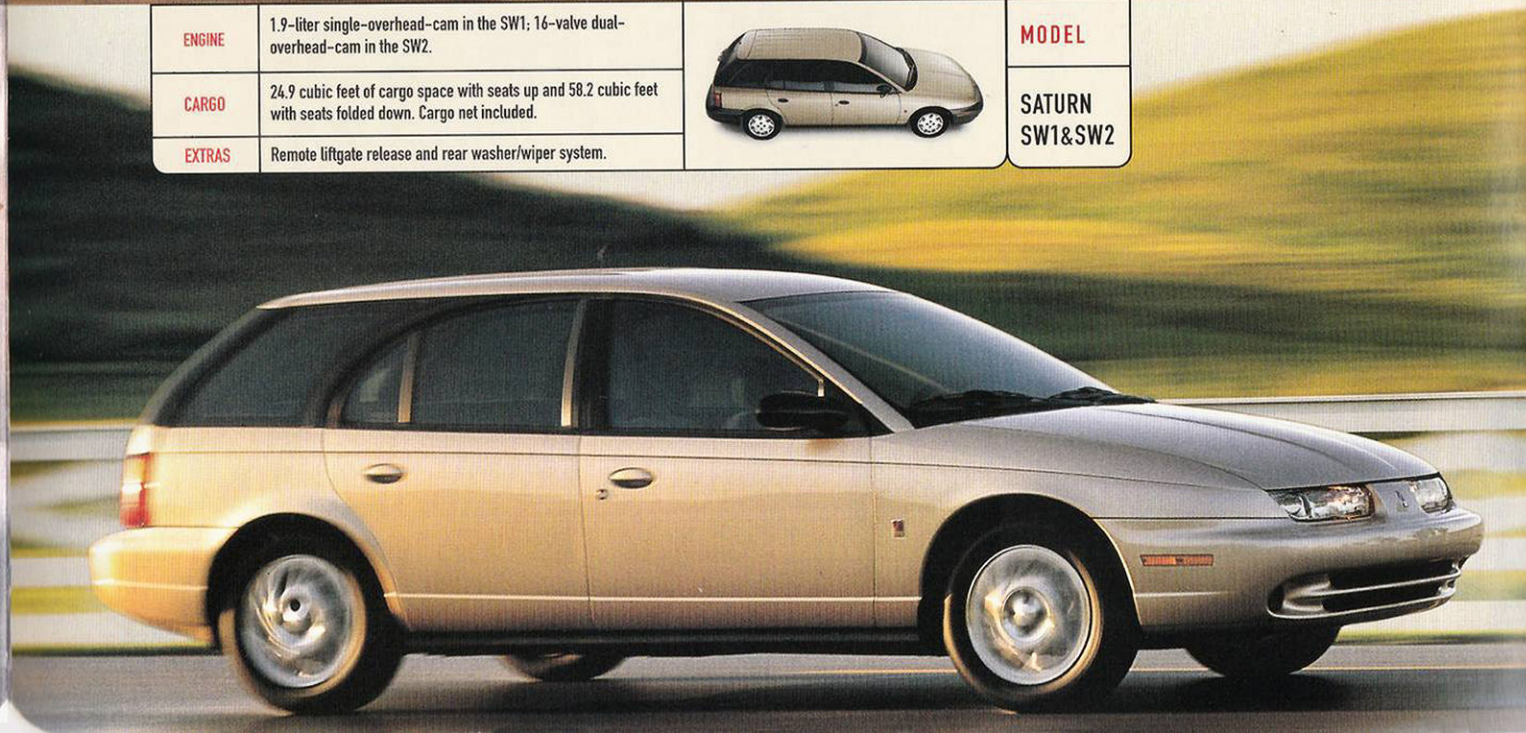


<b>ENGINE</b>	1.9-liter single-overhead-cam in the SW1; 16-valve dual-overhead-cam in the SW2.
<b>CARGO</b>	24.9 cubic feet of cargo space with seats up and 58.2 cubic feet with seats folded down. Cargo net included.
<b>EXTRAS</b>	Remote liftgate release and rear washer/wiper system.



**MODEL**

**SATURN  
SW1&SW2**





**22 millimeters and a new retractor.**

1999 marks the year of a new front seatbelt system at Saturn. One that's designed to protect the upper body even better than before. And let's just say it's the perfect example of how well the entire Saturn family works together.

Our story begins with what's technically referred to as a "load-limiting retractor." That's engineer-talk for a mechanism that helps reduce the amount of force against the chest during a crash. In any case, what makes this retractor so important is that it lowers the likelihood of chest injuries.

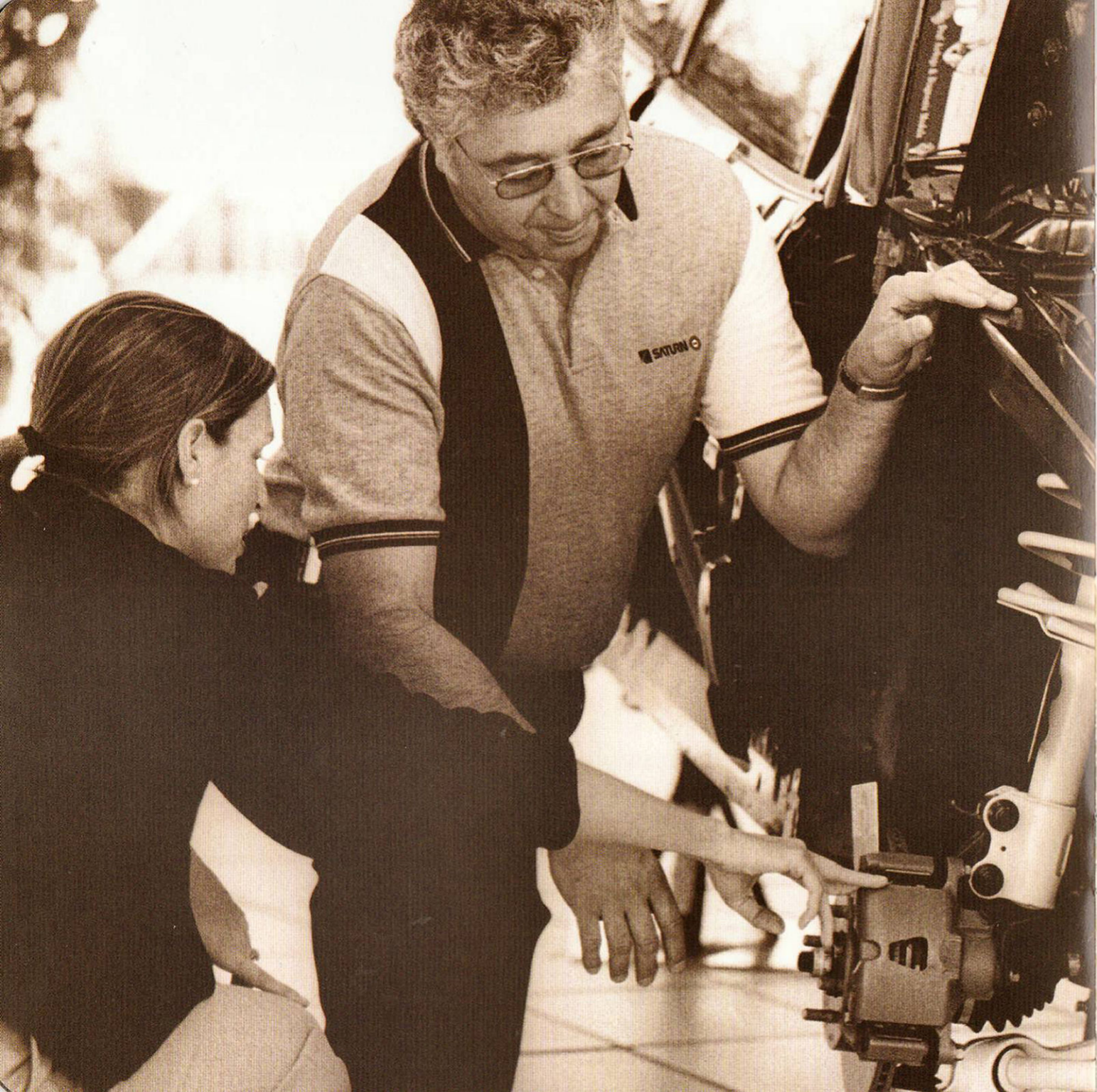
**(All in the name of making a safe car.)**

But the story doesn't end there. Based on a suggestion we got from a few of our customers, we lengthened the front belt buckle by 22 millimeters. As Summer Gilbert, Saturn Restraints Engineer, puts it, "We wanted to make sure it isn't difficult to buckle up. Especially when you get that winter coat in there." Winter or not, we definitely want to make sure people use them.



If this can could talk, it would tell you all about Saturn's front and rear crumple zones—which collapse and absorb energy in much the same way.





**We're out to improve much more than our cars.**

During a water quality survey, the Saturn grounds were found to be the mecca of the Redband darter—a tiny, nearly endangered fish, native to Tennessee. And as Bill Miller, Saturn's Manager of Environmental Affairs, puts it, "You don't want to go messing up the habitat of something that's deemed in need of management."

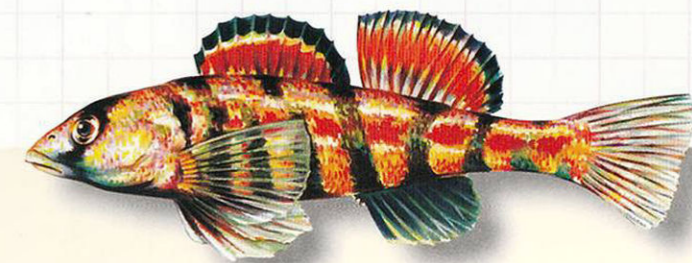
**"The best \$15,000 you can plunk down on a car."**

At least that's how Jim Ulrich, Saturn's Chief Engineer, feels about it. And the fact that Saturns have had the lowest maintenance and insurance costs\* has gotten the industry critics talking, too.

Long story short, a remarkably low cost of ownership pretty much sums up what driving a Saturn is all about. Comfort. Pleasure. And a stress-free environment.

That's why we've carefully managed the water in which the Redband darter lives—a deed that's actually helped expand its population. It's also expanded our desire to manufacture our cars in an environmentally friendly way. In fact, we just earned another Overall Environmental Excellence award in the state of Tennessee. All thanks to 9,767 brains, one fish and a simple desire to do things differently.

\*Named "Lowest Maintenance Cost" and "Lowest Insurance Cost" in the compact and small wagon categories according to *The Complete Car Cost Guide*,™ 1998, IntelliChoice®, Inc., Campbell, CA. [www.intellichoice.com](http://www.intellichoice.com).



## STANDARD EQUIPMENT

5-speed manual transmission • Power-assisted ventilated front disc/rear drum brakes • Driver and front-passenger Reduced Force Air Bags\*\*\* (supplemental inflatable restraints) • Daytime Running Lamps (DRL) • Dynamic side-impact protection • Dent/corrosion-resistant polymer bodyside panels • Tinted glass • Halogen headlights • Adjustable steering column • Remote hood, fuel-filler door and trunklid/liftgate door releases • Rear window defogger • Warning chimes for headlights-on, key-in-ignition and driver's seatbelt • Full-length front console with two cupholders, storage and movable ashtray • Coat hooks and passenger-assist grips • Cargo area light • 3-way dome light • Onboard refueling vapor recovery system and enhanced evaporative emissions control • Full stainless steel exhaust system • Passenger-side visor vanity mirror • Reclining front bucket seats • 60/40-split fold-down rear seatbacks • AM/FM stereo with seek, digital clock and four 6-inch speakers\*\* • Tachometer • Sequential-port fuel injection • 12-volt battery with 525 cold cranking amps • 12.1-gallon (45.8-liter) fuel tank • Steel spaceframe construction • Intermittent wipers

## SELECT FEATURES

	SEDANS			COUPES		WAGONS	
	SL	SL1	SL2	SC1	SC2	SW1	SW2
Manual rack-and-pinion steering	S	N	N	N	N	N	N
Power rack-and-pinion steering (vehicle-speed sensitive, variable-effort feature on SL2, SC2 and SW2)	N	S	S	S	S	S	S
Sport-tuned suspension system with front and rear stabilizer bar	N	N	S	N	S	N	S
Child-security rear-door locks	S	S	S	N	N	S	S
Driver-side black mirror (manual)	S	S	S	S	N	S	S
Passenger-side black mirror (manual)	OA	S	S	S	N	S	S
Dual color-keyed mirrors (manual)	N	N	N	N	S	N	N
Rear wiper/washer system	N	N	N	N	N	S	S

Availability	SL/SL1/SC1/SW1	SL2/SC2/SW2
Engine Type	1.9-liter, SOHC, 8-valve inline 4-cylinder	1.9-liter, DOHC, 16-valve inline 4-cylinder
Horsepower (SAE Net)	100 @ 5000 rpm	124 @ 5600 rpm
Torque	114 ft. lbs. @ 2400 rpm	122 ft. lbs. @ 4800 rpm



\*SL, SC1, SW1

SC2

SL1

SL2, SW2\*\*

SL2, SC2, SW2



BLACKBERRY

DARK BLUE

GOLD

GREEN

MEDIUM RED



RED



SILVER



SILVER PLUM



WHITE

\*SL available with grey interior only.  
\*\*SW2 available with grey or tan interior only.

## OPTIONAL EQUIPMENT

	SEDANS			COUPES		WAGONS	
	SL	SL1	SL2	SC1	SC2	SW1	SW2
Air conditioning with CFC-free refrigerant	O	O I	S	O I	S	O I	S
Alloy wheels — "Multi-Fin" style, 15-inch — "Teardrop IV" style, 15-inch	N	N	O I	O <sup>†</sup>	N	N	O
AM/FM stereo with cassette, graphic equalizer, theft-deterrent feature, digital clock and four 6-inch speakers, including two coaxial speakers <sup>†</sup>	OA	OA	OA	OA	OA	OA	OA
AM/FM stereo with cassette, seek, digital clock and four 6-inch speakers	OA	OA	OA	OA	OA	OA	OA
AM/FM stereo with CD player, graphic equalizer, theft-deterrent feature, digital clock and four 6-inch speakers, including two coaxial speakers <sup>†</sup>	OA	OA	OA	OA	OA	OA	OA
Anti-lock Braking System (ABS) and Traction Control	O	O	O	O	O	O	O
Cruise control	A <sup>‡</sup>	O A <sup>‡</sup> I	O A <sup>‡</sup> I	O A <sup>‡</sup> I	O A <sup>‡</sup> I	O A <sup>‡</sup> I	O A <sup>‡</sup> I
Electronically controlled 4-speed automatic transmission	N	O	O	O	O	O	O
Foglamps	N	N	O	N	S	N	O
Leather Appointments	N	N	O Δ	N	O Δ	N	O Δ
Leather-wrapped steering wheel	A	A	A O	A	S	A	A O
Power sunroof with tilt-up feature, inner sliding shade and dual map lights	N	O	O	O	O	N	N
Rear spoiler	N	N	O	O	S	N	N
Saturn Security System with power locks and remote keyless entry (factory installed)	N	O I	O I	I	I	O I	O I

## CURB WEIGHT WITH AIR CONDITIONING

	Manual Transmission		Optional Automatic Transmission
SL/SL1	2326.5 lbs. (1055.3 kg)	SL1	2355.6 lbs. (1068.5 kg)
SL2	2388.7 lbs. (1083.5 kg)	SL2	2418.0 lbs. (1096.8 kg)
SC1	2372.6 lbs. (1076.2 kg)	SC1	2401.7 lbs. (1089.4 kg)
SC2	2441.8 lbs. (1107.6 kg)	SC2	2471.1 lbs. (1120.9 kg)
SW1	2391.3 lbs. (1084.7 kg)	SW1	2420.4 lbs. (1097.9 kg)
SW2	2448.9 lbs. (1110.8 kg)	SW2	2478.0 lbs. (1124.0 kg)

## FUEL ECONOMY

EPA Estimated Mileage, City/Highway	SL	SL1	SC1	SW1	SL2/SC2/SW2
5-Speed Manual	29/40	29/40	29/40	28/38	27/38
4-Speed Automatic (optional)	N	27/37	27/37	26/35	25/35

## EXTERIOR DIMENSIONS

	SL/SL1/SL2	SC1/SC2	SW1/SW2
Wheelbase	102.4 in. (260.1 cm)	102.4 in. (260.1 cm)	102.4 in. (260.1 cm)
Length	176.9 in. (449.3 cm)	180.0 in. (457.4 cm)	176.9 in. (449.3 cm)
Height	54.5 in. (138.5 cm)	52.4 in. (133.3 cm)	54.9 in. (139.6 cm)
Width	66.7 in. (169.4 cm)	67.3 in. (170.9 cm)	66.7 in. (169.4 cm)

## KEY

S Standard Equipment O Option (Factory Installed) N Not Available A Accessory (Retailer Installed) I Included in Factory Option Package

<sup>†</sup> Coaxial front/extended range rear on factory installations. <sup>††</sup> SL includes two front speakers only.

<sup>‡</sup> Retailer installation requires vehicle to be equipped with one of the following options: air conditioning, automatic transmission, anti-lock braking system, power windows or sunroof.

Δ SC1 with optional "Multi-Fin" alloy wheels includes 185/65R15 86T touring tires.

Δ Requires option package.

\*\*\* Reduced Force Air Bags inflate with reduced deployment force, helping to reduce the risk of deployment injury. Even with Reduced Force Air Bags, however, never place a rear-facing infant restraint in the front seat of any vehicle with an active bag. Always use safety belts and proper child restraints, even with Reduced Force Air Bags. See the Owner's Handbook for more safety information.

## ABOUT THIS BROCHURE

We have tried to make this catalog as comprehensive and factual as possible. We reserve the right, however, to make changes at any time, without notice, in colors, materials, equipment, specifications, models and availability. Since some information may have been updated since the time of printing, please contact your Saturn retailer, call the Saturn Assistance Center at 1-800-522-5000 or check the Saturn Web site at [www.saturn.com](http://www.saturn.com) for complete details.



**Thanks for thinking Saturn.**

Visit us at [www.saturn.com](http://www.saturn.com) or call 1-800-522-5000.

©1998 Saturn Corporation. All rights reserved. No portion of these materials may be reproduced, stored or transmitted without prior written approval of Saturn Corporation. 100 Saturn Parkway, Spring Hill, TN 37174. SATAUTO99