



W H I T E
E N C L O S E D C A R S

White Enclosed Cars

THE White Enclosed Car models represent the highest development of motor cars for the 1913 season from all standpoints of utility, refinement and beauty.

The bodies of White Enclosed Cars are built by, whom we consider, the best body builders in the United States—a concern who have been leaders in establishing styles and designs for fashionable coaches for many years. These cars have a distinction of appearance, quality of construction and skillfulness of design that will strongly appeal to connoisseurs of high-grade enclosed cars.

The architecture of these cars, within and without, establishes a new standard for fine coach design. The exterior lines are remarkable for their simplicity and gracefulness. In the body interiors there is no wasted space, and the result is roominess—spacious seats—not at all crowded together.

The upholstery is deep and luxurious and so skillfully constructed and well-built that its resiliency is permanent, and as long as the car is used it will not sag or disintegrate. A fine selection of covering materials is offered for the choice of purchasers, in shades to match whatever color may be selected for the exterior of the car.

The exterior finish is faultless and durable. Since the early days of the automobile we have worked and experimented toward finding improved methods of building a finish for our cars that will withstand all weathers. Our successful results are obtained by the application of sixteen treatments of color and varnish which require six weeks of time to complete.

The White Electrical Starting and Lighting System adds greatly to the luxuriousness and comfort of White Enclosed Cars, generating its own current for starting the engine and for the illumination of the cars.

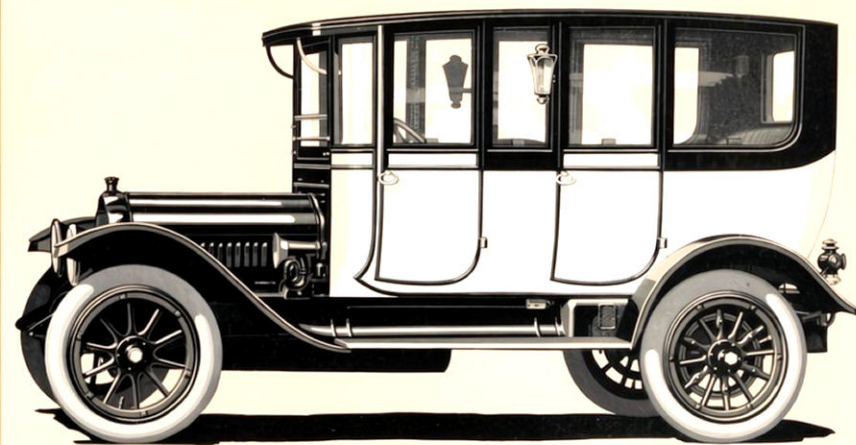
In mechanical design White Cars are unequaled the world over for simplicity and economy of operation. In the driving mechanism is incorporated all of the engineering features which today represent the best practice. The cylinders, together with the intake and exhaust passages and water manifolds, are cast in block, which accomplishes extreme compactness and promotes perfect carburetion. White engines—all of the long-stroke type—develop great power with a small consumption of gasoline. The whole driving mechanism operates with remarkable smoothness and quietness.

The steels used in the manufacture of the White Cars are carefully selected according to the service required from the various parts. Alloy steels, scientifically heat-treated, are used in all vital parts of the car. The cranks, gears, bearings, universals, cams and other parts are thus treated according to formulæ which years of research and experimentation have developed.

Left-Side Drive With Center Control

All White Cars are left-side driven, a feature which is especially advantageous for enclosed cars. This, in connection with the White Electrical Starting and Lighting System, makes it possible for the driver to enter direct from the curb, start the engine and light the lamps without the necessity of stepping into the street. When the most important uses of enclosed cars are considered, this convenience is fully appreciated.

Combined with left-side drive in White Cars, is right-hand control of the gear-lever, with the emergency brake lever conveniently placed, out of the way, at the left side of the car—permitting free access to the driving seat. This location of gear and brake levers is an exclusive White combination and affords the most advantageous method of operation. With this arrangement the driver is not obliged, as with some left-side driven cars, to become accustomed to changing the gears with the left hand and guiding the car with the right, which is extremely awkward and unnatural.



White Sixty Horsepower Berline Limousine—Model G F

White Seven-Passenger Berline Limousines

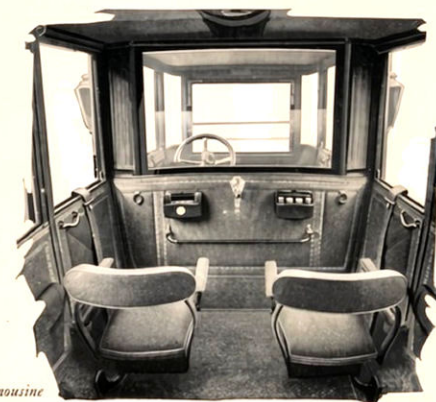
*Made in Six-Cylinder Sixty Horsepower, and
Four Cylinder Forty Horsepower Models*

COMBINING in a motor car the elegance of a drawing room with the comfort of a cozy library, metaphorically describes what has been accomplished in the White Berline Limousines.

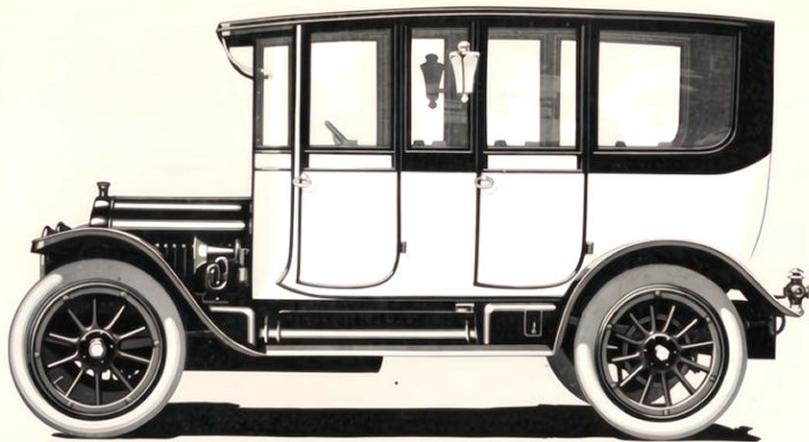
Aside from the luxury of their interior appointments, no enclosed cars produced heretofore have equaled them in the simple dignity and harmony of their exterior lines.

The driving and passenger compartments are divided back of the front seat by a plate glass partition, which can be lowered out of sight when desired, throwing the two compartments completely together.

The two seats in the driver's compartment are exceptionally wide and deep, and upholstered with the finest hand-buffed leather. The rear seat, and the two extra chairs are all deeply



Interior of Berline Limousine



White Forty Horsepower Berline Limousine — Model G E B

cushioned and finished with exquisite fabrics and trimmings. The chairs, when not in use, fold compactly against the sides of the body.

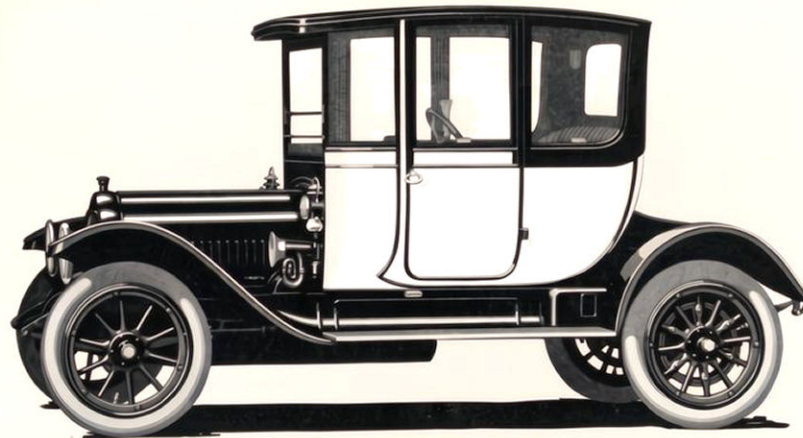
The whole interior is finished in the richest possible fashion and brilliantly lighted by a dome light and two Pullman lamps. An electric cigar lighter, and electric buzzer for attracting the attention of the driver, are provided. Then there are such practical fittings as umbrella holders, robe rail, foot rests,

speaking tube, bouquet vase, cases for toilet requisites, hat and parcel rack and silk curtains. The windows, which may be lowered into the sides of the car, are all of the new frameless plate glass type.

At night the steps are lighted by concealed electric lamps which operate automatically with the opening of the doors. The exterior of the car is lighted by two electric pillar lamps and electric headlights. Abundant current for all of the lights and for driving the starting motor is generated by The White Electrical Starting and Lighting System.



*Interior of Berline Limousine
— Passenger Compartment*



White Sixty Horsepower Coupe — Model G F

White Three-Passenger Coupes

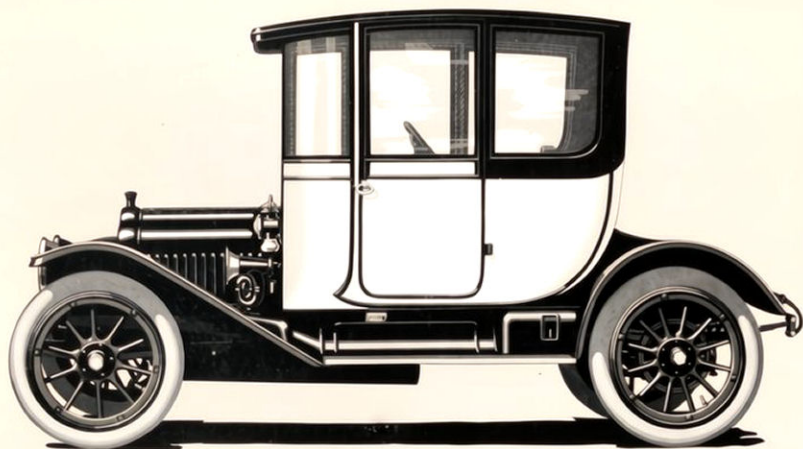
Made in Six-Cylinder Sixty Horsepower, Four-Cylinder Forty Horsepower, and Four-Cylinder Thirty Horsepower Models

THE greatest pleasures of motoring have been withheld from women heretofore, because the old method of cranking the engine and stepping into the street to light the lamps are not desirable tasks for daintily clad women. These inconveniences have all been eliminated in the White Coupes, and yet the capabilities for speed and long distance travel, found only in gasoline cars, have been preserved.

White Coupes are electrically started and lighted from the seat. This feature, in connection with left-side drive, permits entrance direct from the curb so that at all times the traffic rules may be observed and the driver saved the inconvenience of stepping into the street before reaching the sidewalk. The White Electrical Starter also makes it impossible



*Interior of Berline Limousine
— Driver's Compartment*



White Forty Horsepower Coupe — Model G.E.B.

to stall the engine in congested traffic and eliminates any possibility of the occurrence of this embarrassing and often dangerous situation.

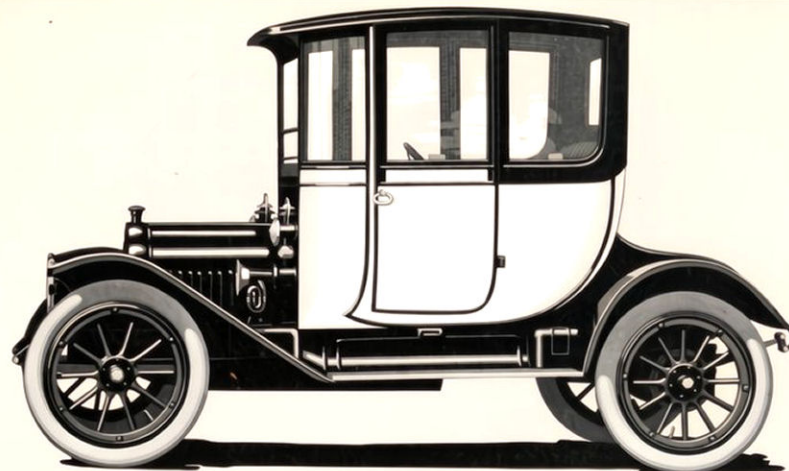
The interiors of these cars exhibit the same distinctive refinement which is characteristic of all White Enclosed Cars. They are lighted within by a dome light and two Pullman lamps. At night the steps are lighted by concealed electric lamps which operate automatically with the opening of the doors. The two seats facing forward, are as comfortable as one's favorite library chair—the driving seat is slightly forward of the guest's seat, to allow perfect ease in the operation of the wheel and gear levers. A third comfortable chair seat is located in the right forward part of the car.



Interior of Coupe

The plate glass window in the front of the car extends downward almost to the hood, giving the driver a perfect view of the road ahead.

The interiors are fitted with containers for toilet requisites, bouquet vase, parcel rack, umbrella holder, coat hooks, electric cigar lighter, and a compartment for carrying small packages. Every feature and convenience which makes a perfect town car has been incorporated in these luxurious, simply operated coupes.



White Thirty Horsepower Coupe — Model G.A.F.

The White Electrical Starting and Lighting System

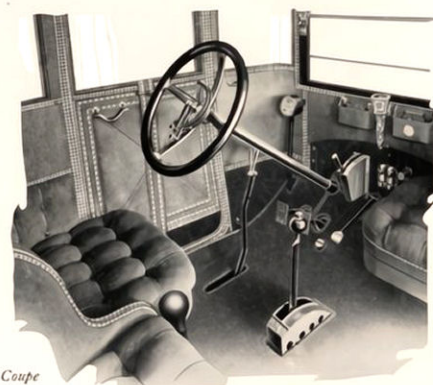
IN the White Electrical Starting and Lighting System both functions of starting and lighting are performed by a motor-generator, with only one moving part. This mechanism operates in either of its capacities—as a motor for cranking the engine or as a generator for charging the battery—absolutely without any automatic switches or controlling devices.

Acting as a starter, the motor imitates hand-cranking exactly—but with more speed and smoothness. It never fails to start the engine in the coldest weather.

The White starter also prevents stalling of the engine. When the speed of the engine drops to a point where it would ordinarily stall, the motor picks it up and continues the crank-shaft in motion without any action on the part of the driver.

After the engine is started and reaches a certain speed, the voltage of the motor-generator exceeds that of the battery and the latter is charged from that speed on.

These advantageous features are exclusive with the White Electrical Starting and Lighting System.



Interior of Coupe

SPECIFICATIONS

ENGINES

Sixty Berline Limousine and Coupe, Model GF—Engine, 60 horsepower; 6 cylinders cast in block; long-stroke, bore $4\frac{1}{4}$ inches, stroke $5\frac{3}{4}$ inches. Intake and exhaust passages and water manifolds integral with cylinder casting.

Forty Berline Limousine and Coupe, Model GEB—Engine, 40 horse-power; 4 cylinders cast in block; long-stroke, bore $4\frac{1}{4}$ inches, stroke $5\frac{3}{4}$ inches. Intake and exhaust passages and water manifolds integral with cylinder casting.

Thirty Coupe, Model GAF—Engine 30 horse-power; 4 cylinders cast in block; long-stroke, bore $3\frac{3}{4}$ inches, stroke $5\frac{1}{8}$ inches. Intake and exhaust passages and water manifolds integral with cylinder casting.

CHASSIS DIMENSIONS

Sixty Berline Limousine and Coupe—Length over all 15 feet; extreme width of chassis 69 inches; gauge 56 inches; road clearance 10 inches; wheel base 132 inches.

Forty Berline Limousine and Coupe—Length over all 14 feet; extreme width of chassis 69 inches; gauge 56 inches; road clearance 10 inches; wheel base 120 inches.

Thirty Coupe—Length over all 12 feet 9 inches; extreme width of chassis 64 inches; gauge 56 inches; road clearance 10 inches; wheel base 110 inches.

TIRES AND RIMS

Sixty Berline Limousine—37 x 5 inches—non-skid on rear. Quick detachable, demountable rims.

Sixty Coupe—37 x 5 inches—non-skid on rear. Quick detachable, demountable rims.

Forty Berline Limousine—36 x $4\frac{1}{2}$ inches—non-skid on rear. Quick detachable, demountable rims.

Forty Coupe—36 x $4\frac{1}{2}$ inches—non-skid on rear. Quick detachable, demountable rims.

Thirty Coupe—34 x 4 inches—non-skid on rear. Quick detachable, demountable rims.

STANDARD COLORS

For all Berline Limousines and Coupes—Dark Green, Maroon, Cleveland Gray, Blue. Nickel trimmings.

STANDARD EQUIPMENT

Berline Limousines—White Electrical Starting and Lighting System; electric headlights; electric pillar lamps; combination electric and oil tail lamp; electric dash lamp; electric emergency lamp; combination Klaxon, electric and bulb; foot-rail; robe rail; tire holders; license holders; extra demountable rim; complete set of tools, including tire pump, tire repair outfit and jack.

INTERIOR

Dome light	Hat and parcel rack
Pullman reading lamps	Umbrella holders
Electric step lamps	Bouquet vase
Electric cigar lighter	Robe rail
Electric buzzer	Stationary arm rests
Toilet cases	Speaking tube
Coat hooks	Silk curtains
	Ventilator

Coupes—White Electrical Starting and Lighting System; electric headlights; combination electric and oil, side and tail lamps; electric dash lamp; electric emergency lamp; combination Klaxon, electric and bulb on models GF and GEB; combination Klaxonet on model GAF; tire holders; license holders; extra demountable rim; complete set of tools, including tire pump, tire repair outfit and jack.

INTERIOR

Dome light	Hat and parcel rack
Pullman reading lamps	Umbrella holder
Electric step lamp	Toilet cases
Electric cigar lighter	Bouquet vase
Coat hooks	Silk Curtains
	Ventilator

PRICES

With Standard Equipment

Six-Cylinder 60 horse-power Berline Limousine, \$6,300.

Six-Cylinder 60 horse-power Coupe, \$5,400.

Four-Cylinder 40 horse-power Berline Limousine, \$5,000.

Four-Cylinder 40 horse-power Coupe, \$4,100.

Four-Cylinder 30 horse-power Coupe, \$3,250.

All prices f. o. b. Cleveland, Ohio.

