



WHY FOLLOW
THE LEADER..
DRIVE IT!



VALIANT
BY CHRYSLER



VALIANT SEDAN - MANUAL TRANSMISSION

This model Valiant looks expensive . . . but really it's so easy to own. Priced competitively in its field—but offering so much more for the money. The room, the ride, the power, the safety—all the qualities that make you proudest to own Valiant.

6

BRILLIANT VALIANTS

PROVIDE VARIETY FOR
YOUR CHOICE-PLUS
TOP VALUE

The pride of Leadership will be yours . . . unmistakably . . . in a Valiant. Know the thrill of owning the car that **started** ahead of all others in its class . . . and today, is even more firmly established as the Leader . . . Valiant, too, leads in Station Wagon design . . . ahead with fresh, fine fashion-setting lines—ahead with so many practical things that add to the sheer enjoyment of Station Wagon living . . . In every way, every Valiant offers everything to fit the Australian way of life . . . Top value for money . . . Safety . . . Solidity . . . A vehicle that is broad shouldered and roomy . . . The full measure of power that's needed to cover long distances at a gallop . . . yet easy on the gallons . . . Now, to fit your family ways and means, Valiant provides the choice of six models—Valiant Sedan and Safari Station Wagon, each available with manual or TorqueFlite automatic transmission—The luxury Regal sedan and the superb Regal Safari Station Wagon—both, of course, equipped with TorqueFlite automatic transmission . . . But whichever you choose, you will enjoy the deepest satisfaction of ownership . . . Driving a sedan or station wagon that has no master on the road . . . except you.



**VALIANT SEDAN . . . WITH THE
LONG LOW LIMOUSINE LOOK . . .**

Valiant's styling is in keeping with the modern trend of clean, crisp, uncomplicated lines—yet its stylists have given this car a distinctive personality of its very own. And there is a practical side to Valiant's beauty, too. The body lines provide maximum useful interior space . . . a really big "holiday-size" luggage boot plus an overall car silhouette which makes it easy for the driver to judge distances . . . particularly when parking. Important, too, is that the styling has enabled a significant increase to be made in overall body structural rigidity.

THE 145 B.H.P. YOU NEED . . .

Valiant's unique "Slant Six" engine provides you with a full measure of power—yet with amazing economy. Every quick and quiet mile you drive, you'll appreciate more and more its remarkably flexible performance and the fact that you have something in reserve to meet any emergency.

BALANCED DESIGN . . .

Valiant was designed from the very start as a **complete** unit . . . all its elements in perfect balance. For example, with Valiant there is the correct balance between horsepower and car weight and in weight distribution. Valiant, too, is provided with particularly large area brakes to match its high performance. Perfect balance in steering and suspension, everything combining to make this such a satisfying car to drive.

THE RIDE YOU LIKE BEST . . .

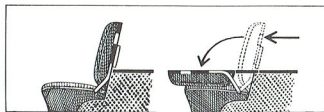
Handles and corners like a sports car—yet has the riding smoothness and the solid, stable "feel" of a big luxury limousine. Valiant's TorsionAire ride is so different that it has to be experienced to be believed. Try it. The car will tell its own story. Convincingly!

VALIANT TORQUEFLITE 3-SPEED AUTOMATIC

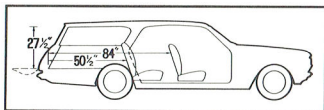
Prefer automatic transmission? Valiant has the smoothest, most silent and trouble free in the automotive business—TorqueFlite—and with push-button control. And 145 B.H.P., plus the high efficiency of TorqueFlite, gives you automatic transmission performance at its very best.

VALIANT PRESENTS THE FINEST IN STATION WAGONS **SAFARI** MANUAL OR AUTOMATIC . . . AND . . .

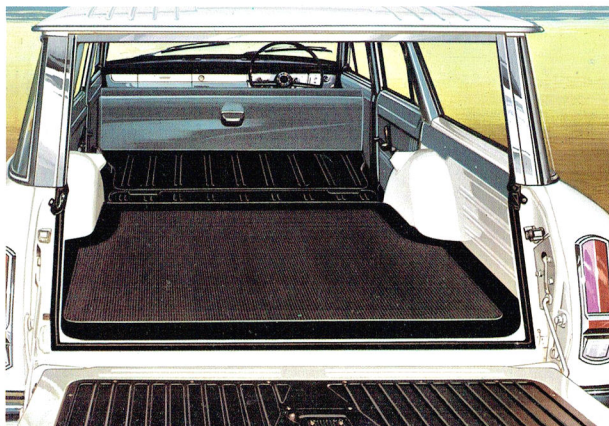
Valiant also means the big, beautiful difference in Station Wagons with 3 models designed to turn a lot of heads and capture a lot of hearts. Living-it-up with Safari or Regal Safari begins with the Valiant advantages in 145 B.H.P. performance and power plant design. Those distinctive qualities which make Valiant so sure-footed smooth and obedient on the road are fully maintained with special Station Wagon suspension. Bigger tyres are fitted for the increased load capacity—And as for those long and lovely lines . . . our color photos speak more eloquently than a thousand words. With Regal Safari or Safari, you have a vehicle that can lead a double life . . . A full six passenger sedan with a distinctive, jaunty, country-club air . . . or for outdoor living—all the extra advantages a station wagon brings . . . and at their very best.



ONE PUSH AND THE REAR SEAT FOLDS FLAT. Yes, it's a simple one-step operation. Release a catch and push the rear squab forward—It pivots down and locks in compression over the seat. A hinged panel behind the squab automatically comes down to complete the flush rear floorspace—room to spare to put you up for the night.



CHRYSLER HAS GONE TO GREAT LENGTHS FOR YOUR EXTRA COMFORT—A full 7 feet inside from rear of front seat to inside of tailgate—4 ft. 2 3/4 in. from rear seat to tailgate. Rear opening 2 ft. 3 1/2 in. Width between wheel arches 3 ft. 7 1/2 in. Compare these important dimensions—you'll find Regal Safari and Safari are the roomiest station wagons of them all.

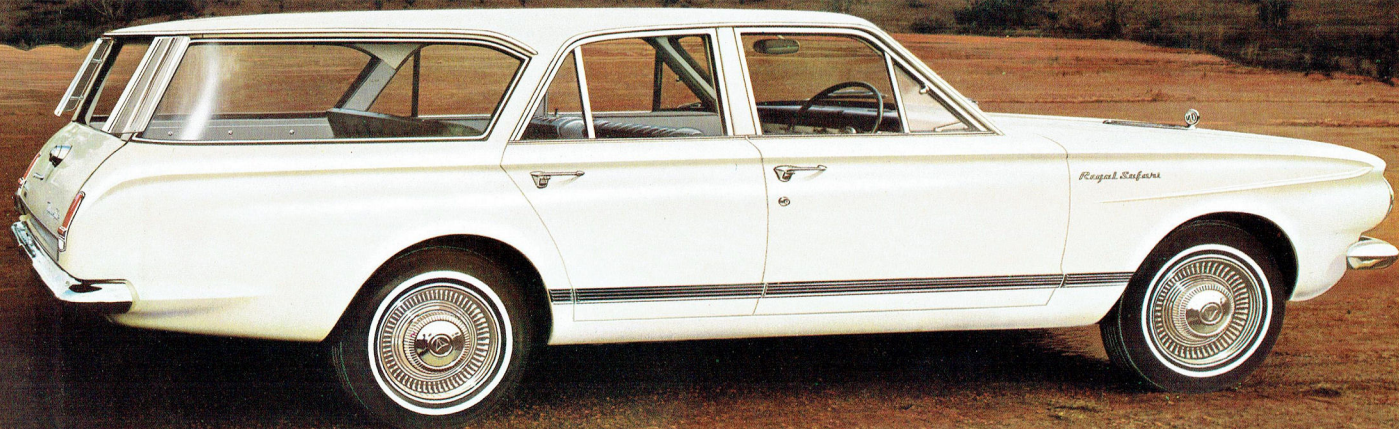


So many practical things about Safari and Regal Safari. For example—The big rear window winds down into the tailgate. It is controlled by an exterior handle with lock so you can have the glass set and locked in any position. Glass must be wound down fully before tailgate can be opened. In all, you have additional ventilation control and, the rear compartment becomes a safe place for children. Low-level, easy-to-load tailgate has sturdy hinges, is counterbalanced by torsion bars and is held in "full-down" position by metal check link. Roof has full length drip gutters including a gutter at the rear above tailgate opening. Spare wheel lies flat in a special compartment under rear floor. Access is through a hinged panel which lifts up—a plastic covered chain then hooks on to the rear drip gutter to hold the panel up. Rear compartment floor is covered by a serviceable rubber mat—In the Regal Safari, this mat is colored and the body side panels of the rear compartment are trimmed to match the seat upholstery. The passenger compartments of Safari and Regal Safari follow the patterns of their Sedan counterparts. In Regal Safari air deflectors are mounted on the rear window pillars. These add a distinctive styling note and break the rear airstream, minimising the settling of dust on the rear window, and aiding rear ventilation.

THE DISTINGUISHED

REGAL SAFARI

WITH 3 SPEED PUSH BUTTON AUTOMATIC TRANSMISSION!



THE LUXURY **VALIANT REGAL** WITH 'TORQUEFLITE' 3-SPEED PUSH-BUTTON AUTOMATIC TRANSMISSION



**NEVER BEFORE HAS
THE PRICE OF PERSONAL
LUXURY BEEN SO LOW!**

With its lavish furnishings, its luxury comfort and high performance, Regal has a tempting appeal to value-wise buyers. The Motoring Editor of "The Age" Melbourne, in his road-test impressions of Regal said:—

"... the Regal can be classed as on a competitive footing with vehicles in much higher price brackets. In fact, I have no hesitation in saying that the value-for-money aspect of the car is particularly good."

"There are rivals that approach its standard of comfort but fall far behind it in performance and it is that combination of comfort and performance that is so hard to match."

Commenting on the appointments of Regal, he went on to say:—
"One of the best points about the long list of extra equipment—from the buyer's point of view—is that so many have utility value. So often a car is loaded with extras which look nice, but achieve nothing."

And summing up:—
"Justifiably described as a prestige car, with equal emphasis on finish and performance."



ADDED LUXURIES FOR REGAL SEDAN AND REGAL SAFARI OWNERS

Behind the wheel of a Regal Sedan or Regal Safari, you feel as if you own the world—and these luxury vehicles provide, in good taste, everything to warrant this fine feeling. Additional furnishings and appointments for Regal and Regal Safari comprise Silky-soft, foam-backed vinyl seat upholstery that does not flake or crack—it just lasts and lasts; Front seats with individually divided and contoured squabs; Regal Sedan has folding seat-centre arm rests both front and rear, Regal Safari, centre arm rest front only; Both have carpeted floors; Heater and Demister; Windshield washer; Carpeted kick-pad on doors; Door sill step plates; Prismatic, anti-dazzle rear view mirror; 2-speed windshield wipers; Two-tone steering wheel; Seat side mouldings; Courtesy switches all doors; Regal sedan luggage compartment is lit and there is a colored rubber floor mat. Regal Safari rear compartment also has a colored rubber floor mat, in addition, the interior body side panels are trimmed to match the upholstery. Regal beauty outside too. Additional and distinctive chrome body mouldings and window trims. Regal Sedan has a special deck-lid ornament; Both have white wall tyres, chrome wheel trim discs, a jewel-like hood medallion. Regal Sedan and Regal Safari have Torque-Flite, 3-speed pushbutton automatic transmission as standard equipment.



IN EVERY VALIANT YOU RIDE IN BEAUTY GRACE AND SPACE

Whether your choice is the Valiant Sedan, Safari, Regal Sedan or Regal Safari, you get most for your money in terms of those things that add to your comfort, pride and pleasure.

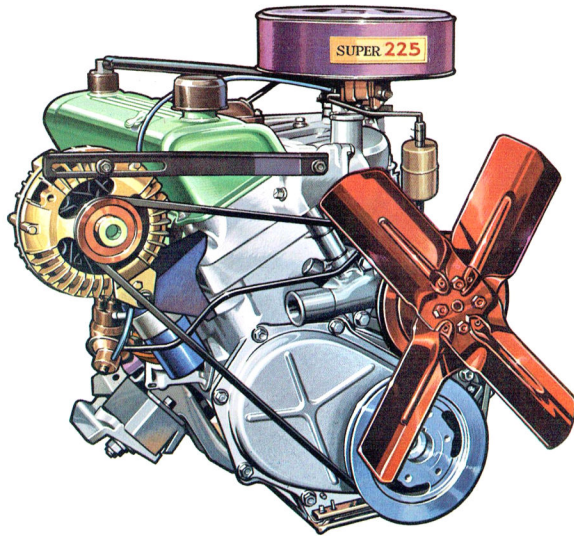
All these fine vehicles provide:— Front seats that can be custom-positioned to suit any build; Interior fresh air supply through cowl-top ventilating system which is fully protected against water entering the body interior; Bodies that are water, dust and rust proofed; Front door no-draught ventilators; Doors that open wide and which have torsion-bar hinges to hold them open in full or intermediate positions; Push button door handles; Two sun visors; A really big glove box with lid recessed to serve as a glass or cup stand; Arm rests all 4 doors; Coat hooks; Instrument panel crash pad; Safety belt anchorage points; Speedometer with total mileage meter; Ammeter; Temperature and fuel gauges; Oil pressure, turn signal and high beam indicators; Dual speed windshield wipers. The Sedans have a parcels shelf behind the rear seats.

Photo left shows one of the high fashion interior designs available in Valiant sedans or the Safari. Floor covering for these models is a smart, serviceable colored rubber mat. Valiant Sedan luggage boot and Safari rear compartment floors covered with black rubber mats.

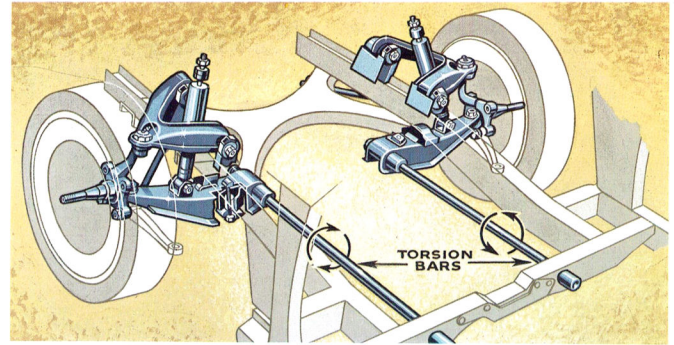


TOP QUALITY - BY DESIGN!

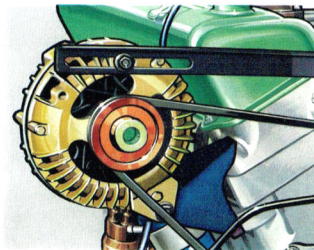
VALIANT HAS THE PERFORMANCE THAT MAKES DRIVING EXCITING ALL OVER AGAIN.



THIS IS THE ENGINE THAT GIVES YOU A NEW SLANT ON UNMATCHED PERFORMANCE WITH ECONOMY—Valiant's ultra-modern O.H.V. "Six" engine is inclined 30° to the right. This results in a low bonnet line and also allows the waterpump to be mounted on the side, which reduces overall engine length, the space saved being added to the passenger compartment. Slanting the engine also makes possible intake and exhaust manifold of very high efficiency which contributes to Valiant's economy. Intake manifold has six individual branches which feed an even fuel mixture to each cylinder. Exhaust manifolds have long radius curves so that the expulsion of burnt gases is fast and complete. A crankshaft dynamic balancer adds to overall engine smoothness. The engine develops 145 B.H.P.@4,000 r.p.m. maximum torque 215 lbs. ft.@ 2,400 r.p.m.



TORSION BAR FRONT SUSPENSION—ONE OF THE REASONS FOR VALIANT'S SMOOTH, STABLE RIDE. Torsion-bars ride better than coil springs because they react faster and bounce less. Combined with Valiant's modern front-end suspension geometry and balanced with special shock absorbers, Valiant's riding motion is level and gentle—no sudden lurch on corners—no sudden "nose-dive" with normal braking. You ride on velvet all the way. In Regal Safari and Safari, all these qualities are maintained through the use of special, heavier, station wagon suspension. Another reason why Valiant is so sure-footed is its wide front and rear tracks—Front track 55.9", rear 55.6". Good ground clearance, 7" with 3 passengers.

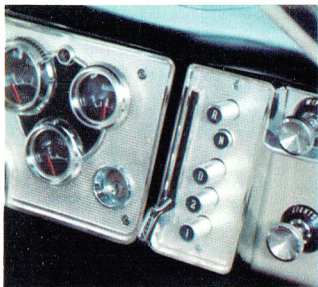


VALIANT'S 'LIFE PRESERVER' ... THE ALTERNATOR

Unlike the generator it obsoletes, Valiant's alternator keeps charging even when the engine is idling. The result, easier starting in cold weather, less battery trouble, longer battery life.

BUILT "BY CHRYSLER" MEANS

MORE FOR YOUR MONEY WHEN YOU BUY . . . MORE WHEN YOU TRADE

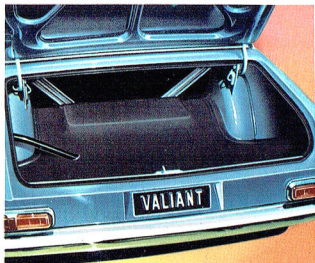


AUTOMATICALLY . . . THE FINEST TRANSMISSION

TorqueFlite is the smoothest, most silent of all automatic transmissions, is simple in design, has no excess weight. It is a completely automatic, 3-speed transmission, controlled by the accelerator and 5 push buttons, which are illuminated at night. All upshifts and downshifts are made automatically, quietly. Push button "D" (drive) covers all normal driving needs. Push-button "1" (low) engages and holds first gear; is used for braking on steep grades. Push-button "2" keeps transmission from shifting to "high"; is ideal for driving in heavy traffic and provides jet-like acceleration. A lever is provided to engage transmission lock when parking.

VALIANT PUTS YOUR SAFETY FIRST

Apart from Valiant's amazing stability on the road—there are other factors which make this the most sure-footed car on the road—Big braking, for example; total effective braking area 153.5 sq. ins. Valiant is also fitted with Chrysler Safety-Rim wheels for added protection in case of sudden tyre damage.

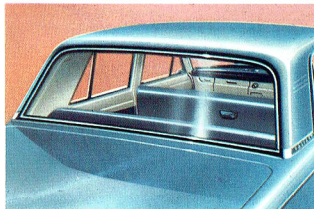


26½ CUBIC FEET OF LUGGAGE SPACE

This is yet another of the many ways in which Valiant and Regal Sedans give you much more. Just compare this boot size with anything else in the popular price field. Boot is long and high and wide, max. length 51½ inches—no trouble about stacking big cases here—every inch of space is clear loading space. Spare tyre concealed under boot floor. Boot lid counter-balanced. Floor covered with rubber mat. Valiant Regal boot mat is colored.

GOOD-BYE TO BODY RATTLES AND SQUEAKS FOR A LIFETIME

The Chrysler system of Unibody construction has been still further improved for added strength, quietness and even simpler construction. Every component and sheet metal panel is a functional part of the all-welded shell, ensuring maximum strength with minimum weight. The skin is a unified stressed component, sharing loads throughout the body. Tests have shown Valiant to have 12% greater twist-stiffness than the previous model. In addition, even greater attention has been paid to rust-proofing.



A STYLE WITH A PRACTICAL PURPOSE

Full width rear window of the sedans is only slightly off the vertical, providing undistorted rear vision and is less prone to catch and reflect on to the rear seat passengers the sun's rays during the hottest times of the day. The design of the rear quarter panels plus the use of massive centre door pillars help give the roof great structural strength.

IMPORTANT DETAILS

Reversing lights standard all models. Long-range fuel tank, 14.3 gallons. Low effort engine-hood latch. Printed circuits for instruments. Parallel action windshield wipers with a bigger field of operation. 2-speed electric windshield wiper motor with ample power. Engine hood and deck lid counter-balanced by torsion bars; 14 in. safety road wheels.

MOPAR TAILORED ACCESSORIES

- POWER BRAKES
- ALL TRANSISTOR RADIO
AUTOMATIC OR MANUAL
TUNING
- RADIO REAR SPEAKER
(Sedan only)
- HEATER AND DEMISTER
- FOOT OPERATED
WINDSHIELD WASHER
- WHEEL COVERS
AND TRIM RINGS
- REAR FENDER SKIRT
(Valiant Sedans and
Safari—will not fit
Regal models)
- TOW BAR
- FRONT DOOR
WEATHER SHIELD
(Various colors)
- MUD FLAPS
- FUEL TANK LOCKING CAP
- EXTERIOR REAR
VIEW MIRROR
- REAR PILLAR
DUST DEFLECTORS
(Safari only)
- 'DAY-NITE'
INTERIOR MIRROR
- SAFETY BELTS
(All types)
- EXTERIOR SUNSHADE
BLADE AND MESH TYPES
- REAR VENETIAN SHADE
(Sedans only)
- ENGINE HOOD LOCK
- DECK LID LAMP
(Sedans only)
- INSECT SCREEN

VALIANT SPECIFICATIONS

DIMENSIONS—Sedans

Wheelbase 106"; Max. overall length 185.4"; Max. overall width 69.0"; Height (3 passengers) 55.0"; Track—front 55.9", rear 55.6".

DIMENSIONS—Safari and Regal Safari

Wheelbase 106"; Max. overall length 186.2"; Max overall width 69.0"; Height (3 passengers) 55.0"; Floor length front seat back to inside tailgate closed 7'; Floor length rear seat back to inside tailgate closed 4'2½". Minimum distance between wheel arches 3'7½"; Rear end opening width at floor 3'8½".

ENGINE

O.H.V., 30° inclined, 6 in line; Bore 3.40"; Stroke 4.125"; Piston displacement 225 cu. ins.; Compression ratio 8.2 : 1; Taxable H.P. 27.7; max. B.H.P. @ r.p.m. 145 @ 4,000; max. torque @ r.p.m. 215 @ 2,400.

ENGINE (GENERAL)

Combustion chambers are the in-line wedge-shaped type, with large valves for efficient engine breathing. Exhaust

valves have four bead-keepers, helping valves rotate, distributing wear evenly. Pistons, lightweight, tough aluminium alloy with two compression and one oil control ring. Crankcase ventilating system is a closed type with flow-control valve, which also gives back-fire protection and eliminates air pollution.

Single downdraft carburettor is calibrated to supply the exact fuel mixture for economical performance. Small diameter carburettor throat exercises better control of the fuel-air mixture. Automatic choke. Full-flow oil filter.

TRANSMISSION (TorqueFlite)

The TorqueFlite transmission combines a torque convertor and an automatic planetary gearbox. The torque convertor extends torque multiplication over a wide range of engine speeds. The automatic gearbox is controlled by hydraulic pressure supplied by the front and rear oil pumps; this pressure varies according to the throttle opening.

Depending on the drive range selected, the throttle opening and the car speed, the control valves will cause hydraulic pressure to engage or release the clutches and apply or release the bands, thus causing the planetary gear set to provide three forward and one reverse ratios.

Transmission oil is water-cooled and has its own oil filter.

Gear ratio and gears used in each selected position—

"R"—reverse gear; 2.2 to 1 ratio.

"N"—neutral.

"D"—1st, 2nd and drive; 2.45, 1.45, and 1.00 to 1.

"2"—1st and 2nd; 2.45, 1.45 to 1.

"1"—1st; 2.45 to 1.

BRAKES

Duo-servo, hydraulic. Total effective area 153.5 sq. ins. Cast iron brake drums. Parking brake operated by "T" handle, under R.H. side of instrument panel; operates on rear wheels.

REAR AXLE

Hypoid—semi floating, 2 pinion differential. Gear ratio 3.23 to 1.

SUSPENSION

Front—Independent, lateral, non-parallel control arms with torsion bars. Rear—Longitudinal leaf springs. Safari and Regal Safari have extra capacity rear springs.

STEERING

Linkage—Parallel idler arms with equal length tie rods.

WHEELS AND TYRES

Wheels—Steel disc. Safety rims. Tyres—Valiant Regal—5.90 x 14 x 4 ply, white wall. Valiant—5.90 x 14 x 4 ply black. Regal Safari—6.50 x 14 x 4 ply, white wall. Safari—6.50 x 14 x 4 ply black.

CAPACITIES

Cooling system—18 pints; Fuel tank 14.3 gallons; Crankcase (less oil filter) 6.6 pints; Crankcase (inc. oil filter) 8.3 pints.

Transmission—manual 4.1 pints, automatic 12.5 pints. Rear axle 1.7 pints.

Specialised Service and Genuine MoPar Parts available Nationwide.

The policy of Chrysler Australia Limited is one of continual improvement in design and manufacture, wherever possible to assure a still finer car. Hence, specifications, equipment and prices are subject to change without notice.

CHRYSLER AUSTRALIA LIMITED, ADELAIDE, S.A.



**CHRYSLER
AUSTRALIA LTD.**