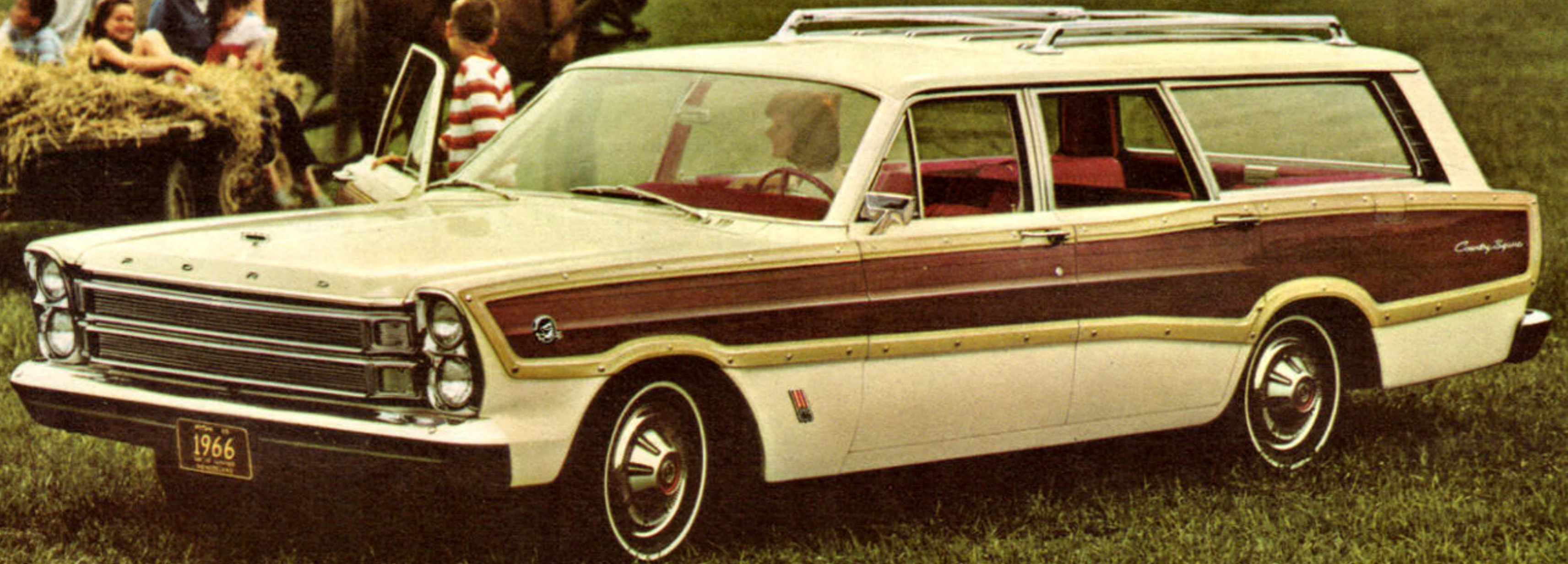


1966 Ford Wagons

FORD FAIRLANE
FALCON



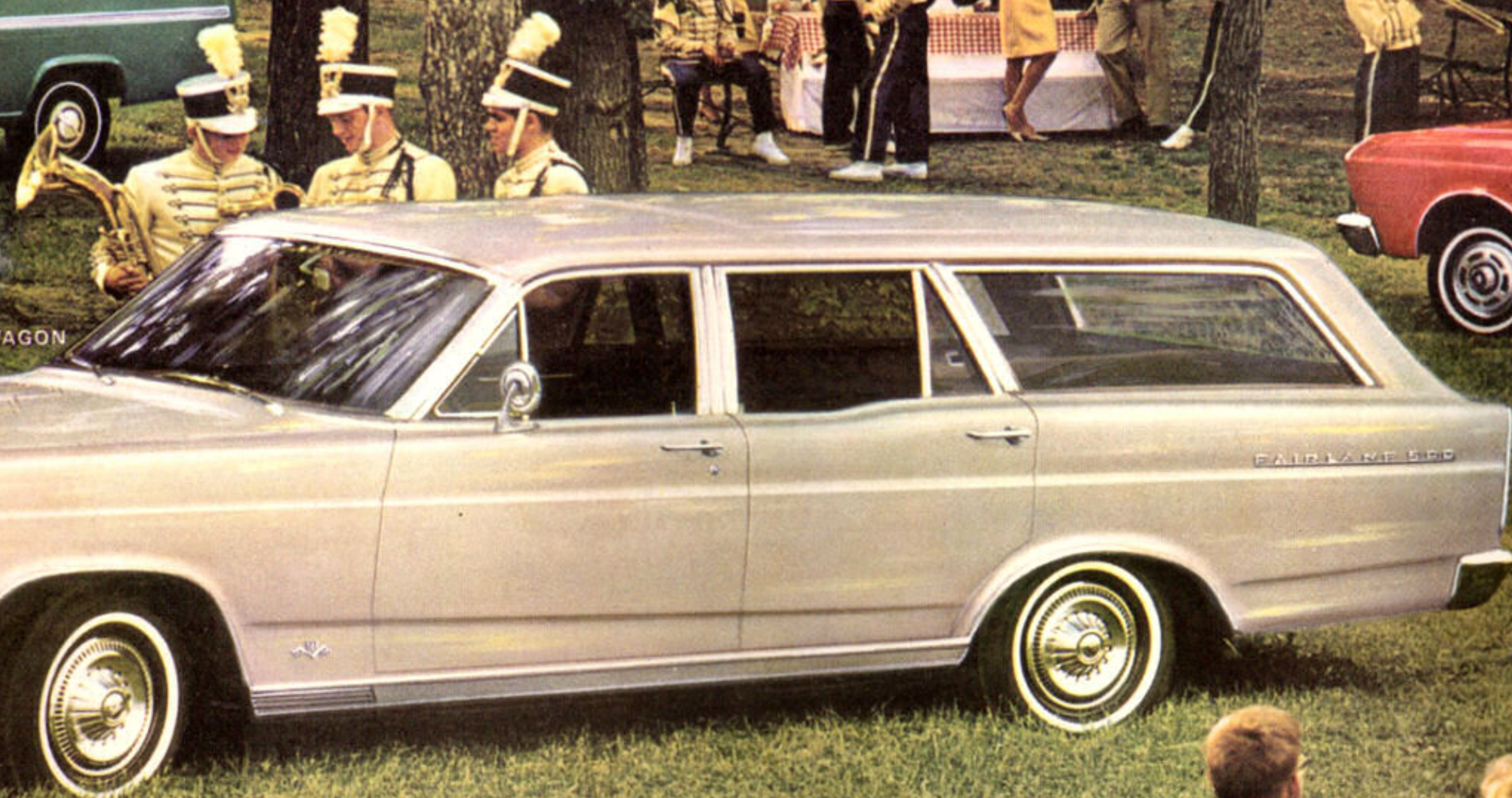
*Introducing
the exclusive
Magic
Doorgate*



From America's Station Wagon Specialist...
THE NEWEST WAGON IDEAS UNDER THE SUN



FALCON DELUXE CLUB WAGON



FAIRLANE 500 WAGON



FALCON FUTURA WAGON



FORD COUNTRY SQUIRE

What's newest in wagons? Ask Ford, famed for great wagons, great wagon ideas. Now for '66, Ford surpasses its all-time best!

Imagine—a totally new kind of wagon tailgate that can be a full-width rear door as well as a tailgate. Fantastic? Sure, and handier than you can ever imagine. It's yours with the Magic Doorgate, standard on new Ford and Fairlane wagons . . . optional on Falcon wagons.* ■ In the big Fords are elegant new looks . . . new interior richness . . . whopping big loadspace (up to 103 cu. ft.!) and working wagon ideas like dual-facing rear seats (to give you seating for a family of 10!) ■ Falcon and Fairlane wagons are all-new—new in styling and size . . . more luxurious and more spacious, more loaded with features.

*Except Falcon Club Wagons

There's new power for the new wagons from Ford . . . 16 power teams in all . . . with three Sixes and five V-8's that range up to 345 hp. Famous 3-speed Cruise-O-Matic is available with every engine in every wagon.

You've a total of 13 wagons to choose from: big, luxurious Fords, handsome Fairlanes, thrifty Falcons and versatile Falcon Club Wagons. See and drive one at your Ford Dealer's now.

1966 WAGONS FROM FORD: 4 SIZES, 13 MODELS

| | |
|--------------------------|---|
| FORD COUNTRY SQUIRE | 6-Passenger & Dual-Facing Rear Seat* Models |
| FORD COUNTRY SEDAN | 6-Passenger & Dual-Facing Rear Seat* Models |
| FORD RANCH WAGON | 6-Passenger, 4-Door Model |
| FAIRLANE SQUIRE | 6-Passenger, 4-Door Model** |
| FAIRLANE 500 WAGON | 6-Passenger, 4-Door Model** |
| FAIRLANE WAGON | 6-Passenger, 4-Door Model** |
| FALCON FUTURA WAGON | 6-Passenger, 4-Door Model |
| FALCON WAGON | 6-Passenger, 4-Door Model |
| FALCON CLUB WAGON | 5-Passenger** |
| FALCON CUSTOM CLUB WAGON | 5-Passenger** |
| FALCON DELUXE CLUB WAGON | 5-Passenger** |

*Seating for a family of 10. **Seating for 4 with optional 3rd seat.



Handsome Country Sedan all-vinyl interior



Exclusive Ford dual-facing rear seats and Magic Doorgate

Ford Wagons

Ford's big 1966 Country Squires, Country Sedans and Ranch Wagons are loaded with the newest wagon ideas. Most exciting of all is the exclusive Magic Doorgate. It lowers like a tailgate (above) to take on long loads (ladders, lumber, etc.). Or it swings open like a door for people or loading cargo (below).

Ford wagons have other exclusives, too. Built-in air deflectors help clean the rear window as you drive. Two models have passenger space for a family of 10 with Ford's dual-facing rear seats. (Each of these versatile seats can flip down to form a handy table.) Fords carry up to 103 cu. ft. of cargo — with enough width to take a stack of 4 x 8-ft. plywood panels flat. All models have lockable below-floor stowage compartments.

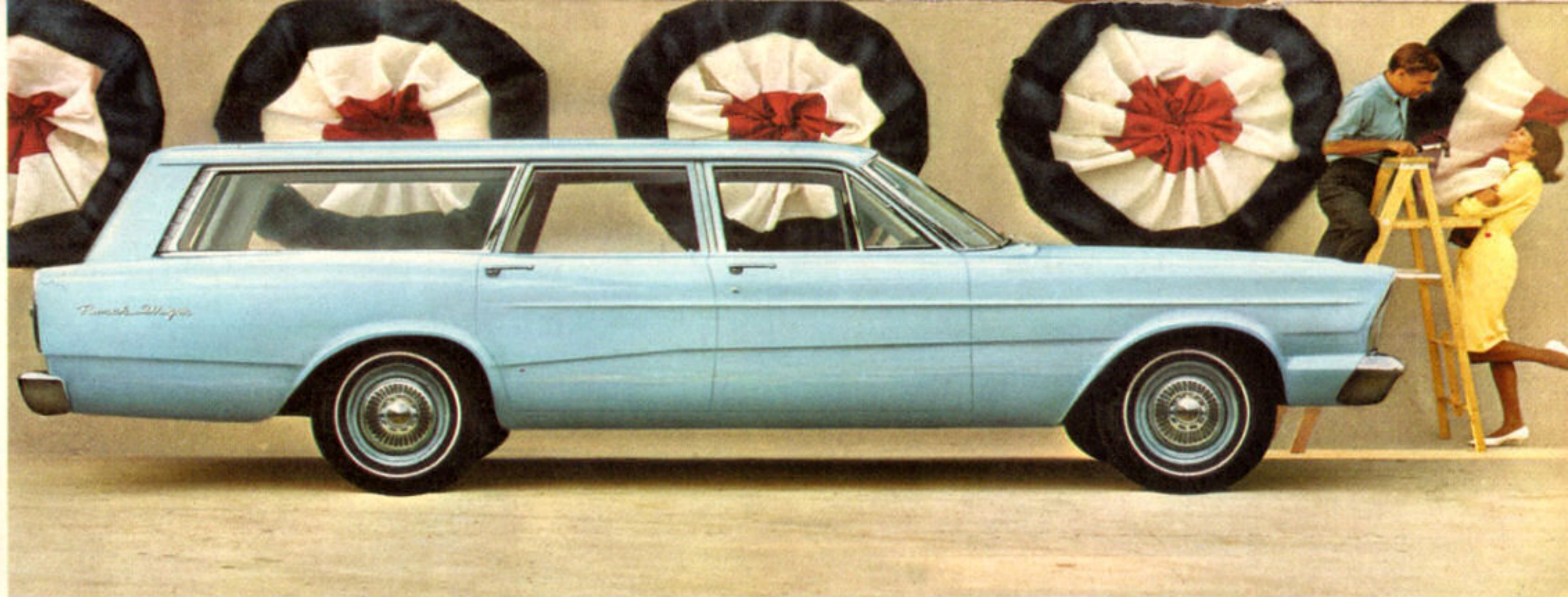
The '66 Ford wagons' beautifully balanced



FORD COUNTRY SEDAN



Luxurious Ford Country Squire interior



Ranch Wagon, lowest-priced full-size Ford wagon

full coil suspension, 62-inch wide tread with 15-inch wheels and low-profile tires all work together to make new Ford wagons ride as quietly and smoothly as new Ford sedans!

Padded instrument panel and sun visors, windshield washers, outside rearview mirror, backup lights, emergency flasher and seat belts head up a long list of standard equipment. And you can select from a total of 13 standard or optional trims which are as durable as they are handsome.

Ford's husky 150-hp Big Six leads off a parade of total performance engines. Choose from five V-8's (three using *regular* gas) with up to 345 hp. Eager, versatile 3-speed Cruise-O-Matic is available with all engines.

For the ultimate in distinctive options, Ford offers a Stereo-Sonic Tape System with full-range "living sound." And with Automatic Speed Control for highway cruising, you dial the speed (25-80 mph), the control does the rest.

Ford Wagon Highlights

5 Models: Ranch Wagon, Country Sedan, Country Squire, Country Sedan and Country Squire with dual-facing rear seats ■ Wheelbase—119" ■ Overall Length—210.9" ■ Cargo Volume—up to 103 cu. ft. ■ Std. Engine—150-hp Big Six ■ Std. Transmission—Synchro-Smooth Drive (fully synchronized 3-speed manual) ■ Options—5 V-8's (200, 250, 275, 315, 345 hp): Cruise-O-Matic Drive; Overdrive. (For standard equipment, see page 14; options on pgs. 12-13.)





Fairlane interior . . . handsome, durable vinyl trim



The Fairlane Wagon . . . lowest priced of three Fairlane wagons

Fairlane Wagons

Completely new, young-at-heart styling is the tip-off to how much Fairlane wagons have changed. But look again! You'll see much more. Like the Magic Doorgate, exclusive on

Fairlane wagons

Ford-built wagons, which opens like a tailgate or a door. Carrying cargo or people was *never so easy!* Inside, there's plenty of room for six—or eight passengers with Fairlane's optional third seat. Fairlane cargo space adds up to a generous 93.4 cu. ft. including 8.2 cu. ft. of concealed space in a hidden lockable* compartment.

Fairlane wagons come in three models for '66

*Standard on Squire and 500 models, optional on the Fairlane



FAIRLANE 500 WAGON



Fairlane Squire & 500 interior . . . choice of 5 trims



Magic Doorgate (standard): It's a door (above) or a tailgate (below). Optional third seat shown

with a brand-new Squire leading the way. There's a full range of engine choices from the standard 200-cubic-inch Fairlane Six through three V-8's—two of them new Thunderbird V-8's—with up to 315 hp! Transmission options include 3-speed Cruise-O-Matic and Overdrive. A new luxury option is SelectAire Conditioner which combines air-conditioning, heating and defrosting.

Underneath the new styling, Fairlane's '66 front and rear suspensions, plus new integral body-frame construction, produce a ride that's smoother, quieter than ever. And Ford's service-saving features make '66 Fairlane wagons as economical to own as Fairlanes have always been. Drive a new Fairlane wagon . . . see how much *more* you get for your money in the value-packed '66 Fairlane!

Fairlane Wagon Highlights

3 Models: Fairlane Wagon, Fairlane 500 Wagon, Fairlane Squire
 ■ Wheelbase—113" ■ Overall Length—199.8" ■ Cargo Volume—93.4 cu. ft.*
 ■ Standard Engine—120-hp Fairlane Six
 ■ Standard Transmission—3-Speed Manual ■ Options—3 V-8's (200, 265 & 315 hp); Cruise-O-Matic Drive, Overdrive (200-hp V-8). (For complete standard equipment listings, see page 14; for options, see pages 12-13.)

*Includes below-floor compartment of 8.2 cu. ft.



FAIRLANE SQUIRE WAGON



FALCON WAGON

New optional Magic Doorgate opens on 85.1 cu. ft. of Falcon cargo space

Futura wagon interior . . . one of five all-vinyl trims



Falcon Wagons

New styling, new luxury, new size . . . same kind of low Falcon price!

That's the Falcon wagon story for '66. This year Falcon wagons are bigger *inside and out*.

There's more shoulder and leg room and a cargo space that's increased over 9%! Wider tailgate opening makes a Falcon easier to load. And for the *greatest* convenience, you can have the Magic Doorgate* on either model. It works like a door *or* a tailgate, as you prefer . . . just like Ford and Fairlane wagons.

Falcon's new wider tread, longer wheelbase and more durable suspension team up to give a smooth, more stable ride. New isolated torque boxes help absorb road shock and vibration.

Falcon wagons come in two models for '66—Falcon and Futura. Standard engine is the 200-cu. in. Fairlane Six with seven main bearings for smoothness. A big 289-cu. in. Challenger V-8 and famous 3-speed Cruise-O-Matic are optional.

'66 Falcons are still big on economy with low price, great gas mileage and Ford's Twice-a-Year Maintenance (back cover) to save you money every mile you drive. For room, ride and famous Falcon economy, you can't beat the new '66 Falcon wagons.

**Optional*

Falcon Wagon Highlights

2 Models: Falcon and Falcon Futura ■ Wheelbase—113" ■ Overall Length—198.7" ■ Cargo Volume—85.1 cu. ft. ■ Standard Engine—120-hp Fairlane Six ■ Standard Transmission—3-Speed Manual ■ Options—200-hp Challenger V-8, 3-Speed Cruise-O-Matic Drive. (For standard equipment, see page 14; options, pgs. 12-13.)



FALCON FUTURA WAGON



CUSTOM CLUB WAGON

DELUXE CLUB WAGON (WITH EXTENDED BODY OPTION)



Club Wagon—lowest priced of these extra-big Falcon wagons

Falcon Club Wagons

These are the Ford-built wagons with more loadspace than most people can fill and more imitators than anyone can shake a stick at. They're handy, versatile, willing and well-suited to just about every wagon job you can name.

And, as if 194 cu. ft. of cargo space (about *twice* the total of most regular

wagons) weren't enough, Falcon Club Wagons now come with an Extended Body Option that adds 1½ feet to the load floor and boosts cargo volume to 242 cu. ft.!

Bring on your Brownies, Boy Scouts, Little Leaguers . . . campers, fishermen, do-it-yourself artists! Falcon Club Wagons have six big, wide doors to load everybody in, plenty of room to spare for gear. There's a handy side step that retracts automatically when doors close . . . a picture-window front view and full-circle visibility all around . . . trim 90-inch wheelbase makes "turning on a dime" a reality . . . front and second row seats are standard.*

Like all Falcons, Club Wagons are famous for savings. The 105-hp Falcon Six is the thrifty standard engine, with the 150-hp Big Six option also noted for economy. Synchro-Smooth Drive (the *fully* synchronized 3-speed manual) is the standard transmission with 3-speed Cruise-O-Matic optional. Ford's Twice-a-Year Maintenance and famous service-saving features add economy to carefree driving on and on over the miles.

Get one of the wagons that take more, do more, save more—Falcon Club Wagons for '66.

*3-passenger third seat optional



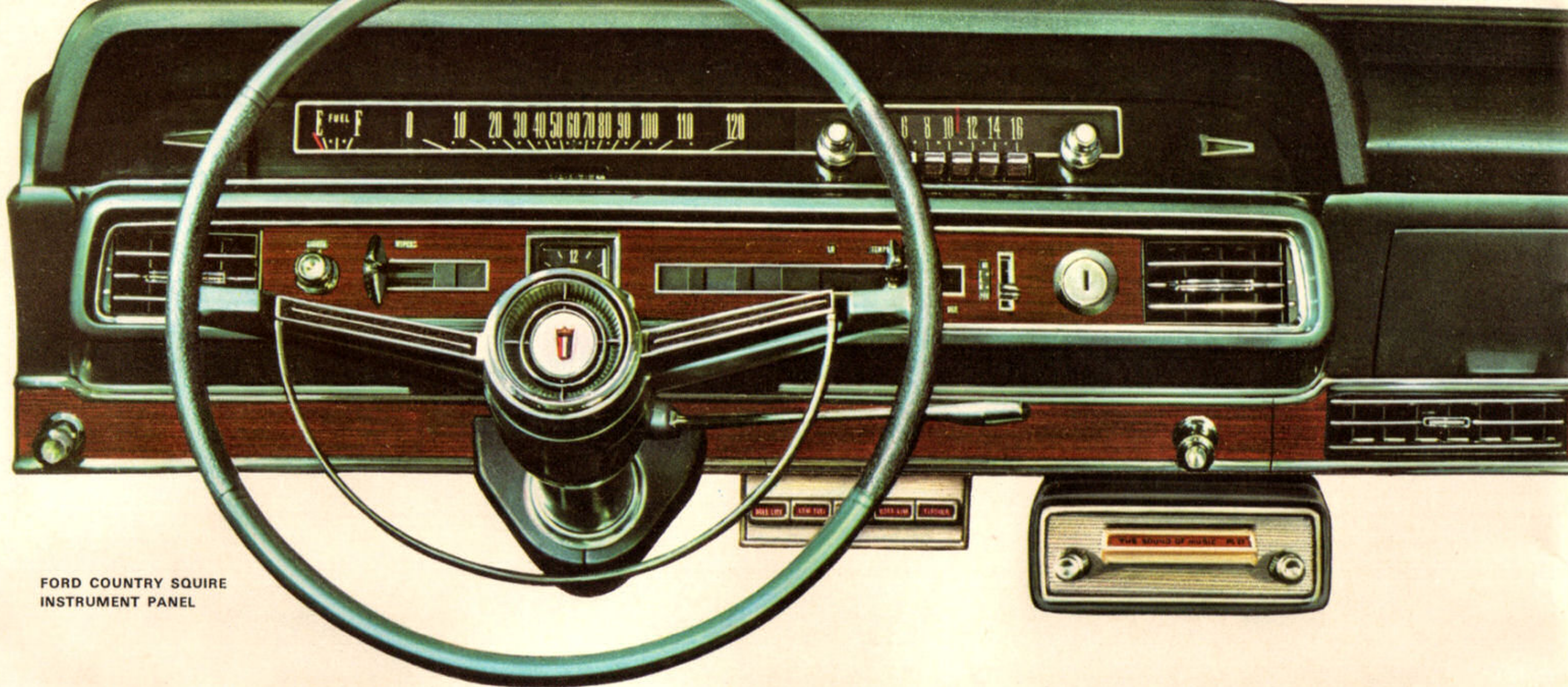
Deluxe Club Wagon all-vinyl interior



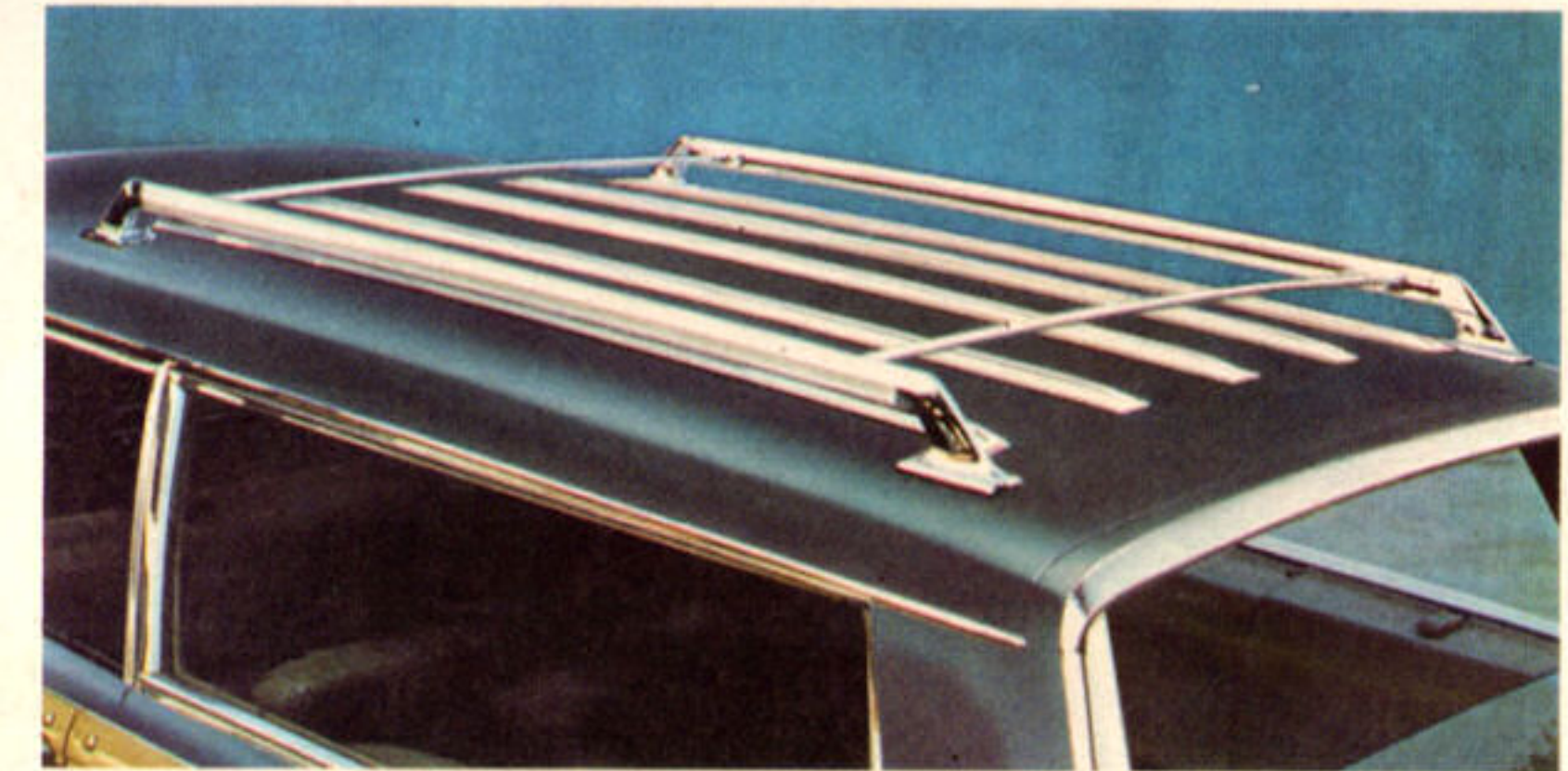
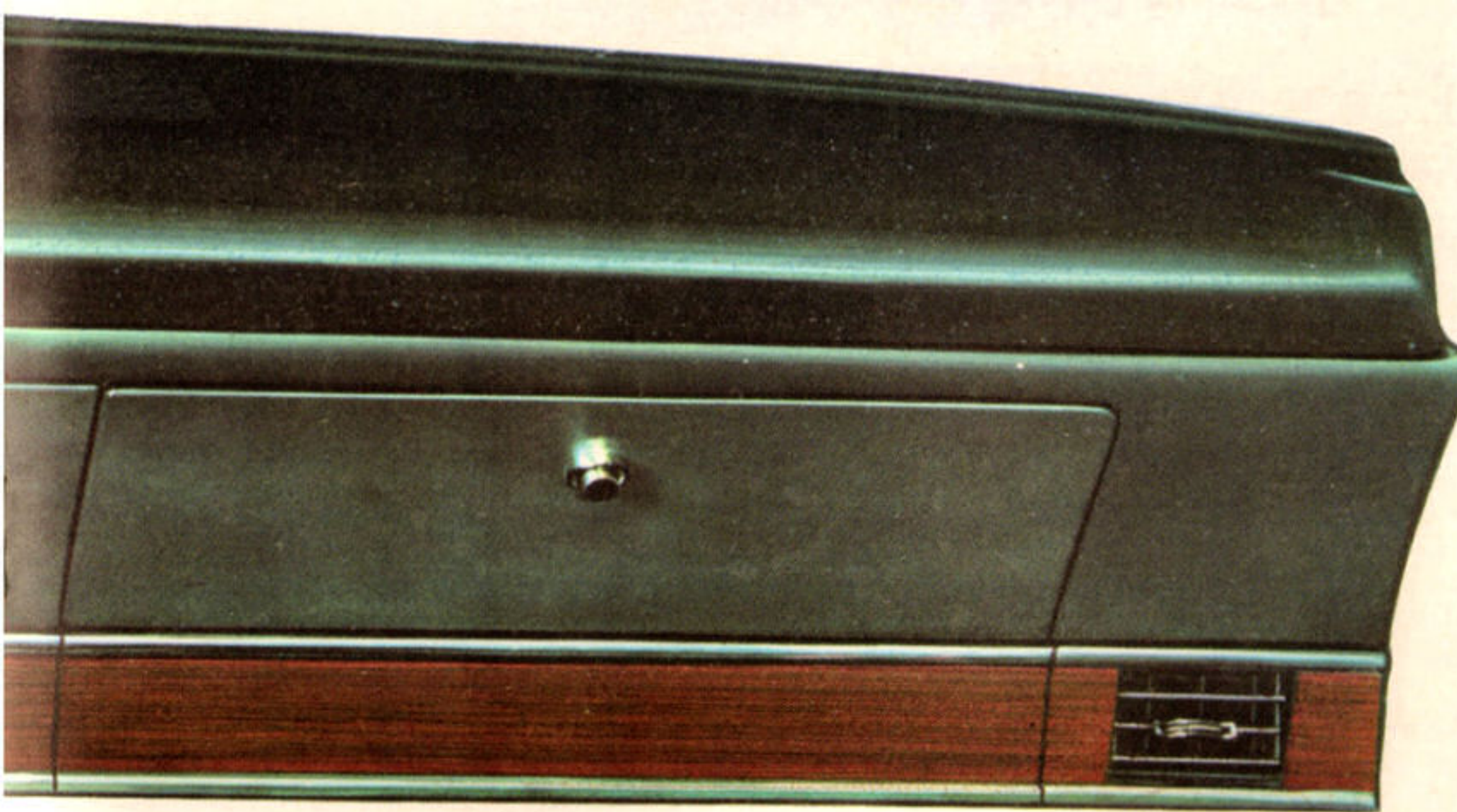
With Extended Body Option swallows 242 cu. ft. of cargo

Falcon Club Wagon Highlights

3 Models: Club Wagon, Custom Club Wagon, Deluxe Club Wagon
 □ Wheelbase—90" □ Overall Length—167.5" □ Cargo Volume—194 cu. ft. (242 cu. ft. opt.) □ Standard Engine—105-hp Falcon Six □ Standard Transmission—Synchro-Smooth Drive (fully synchronized 3-speed manual) □ Options—150-hp Big Six; Cruise-O-Matic Drive. (For standard equipment, see page 14; for options, pgs. 12-13.)



FORD COUNTRY SQUIRE INSTRUMENT PANEL



WAGON ROOF RACK* Two types available: conventional model with stationary end rails and a new adjustable model (above) with sliding end rails to make it adaptable to different size loads.

Tailor your wagon from this long list of Options & Accessories

Ford, Fairlane and Falcon Wagon Options*:

Illustrated above—**Padded Instrument Panel** is standard equipment (as are color-keyed padded sun visors). **Power Steering** reduces effort up to 85%, makes parking, low-speed maneuvering as easy as turnpike cruising. New **SelectAir Conditioner** is completely panel-enclosed, provides year-round comfort control—heating in winter, cooling in summer—with simple controls and four adjustable air outlets. **Radios** (AM and AM-FM models). All-transistor, push-button tuning. Speaker centered in instrument panel for sound balance. (Rear compartment speakers also available.) **Cruise-O-Matic Drive**, the famous 3-speed automatic, gives you the selectivity of two separate driving ranges. **Safety/Convenience Control Panel** and **Stereo-Sonic Tape System**: both are fully detailed below. **Additional Options**: Deluxe Trim Group

on Country Sedans (Country Squire interior trim) □ Electric Clock □ White Sidewall Tires □ Deluxe Wheel Covers □ Tinted Glass □ Fairlane Third Seat □ Spotlight with Mirror □ 2-Speed Windshield Wipers □ Heater-Defroster † □ Die-Cast Grille (Country Sedans) as shown on Country Squire on cover □ and many more.

Falcon Club Wagon Options:

Extended Body (boosts cargo capacity over 24%) □ 240-cu. in. Big Six Engine □ 3-Speed Cruise-O-Matic Drive □ AM Radio □ Driver's Seat with Folding Back □ Third Row Seat □ Heater-Defroster † □ Pivoting Rear Door Windows □ Heavy-Duty Package (stronger underbody structure and higher capacity suspension components to carry one-ton payload) □ Auxiliary Heaters (hot water or gasoline) □ and many more.

*For exact model availability, consult your Ford Dealer †Deletion—see "Prices" on back cover

STEREO-SONIC TAPE SYSTEM* Rich, multi-speaker stereo with quick-changing, self-contained cartridges! Over 70 uninterrupted minutes of your favorite music in real stereo.

SAFETY / CONVENIENCE CONTROL PANEL* Includes automatic door lock control; warning lights to tell you "low fuel," "fasten seat belts," "door ajar"; control and indicator light for emergency flasher.

AUTOMATIC SPEED CONTROL* Ideal for turnpike driving. Set dial to desired speed (25-80 mph), then take your foot off the accelerator and cruise. Touch of the brake disengages control.

POWER WINDOWS* Push buttons control raising or lowering the four side windows. Driver has a separate "lock" button to cancel individual passenger window controls.

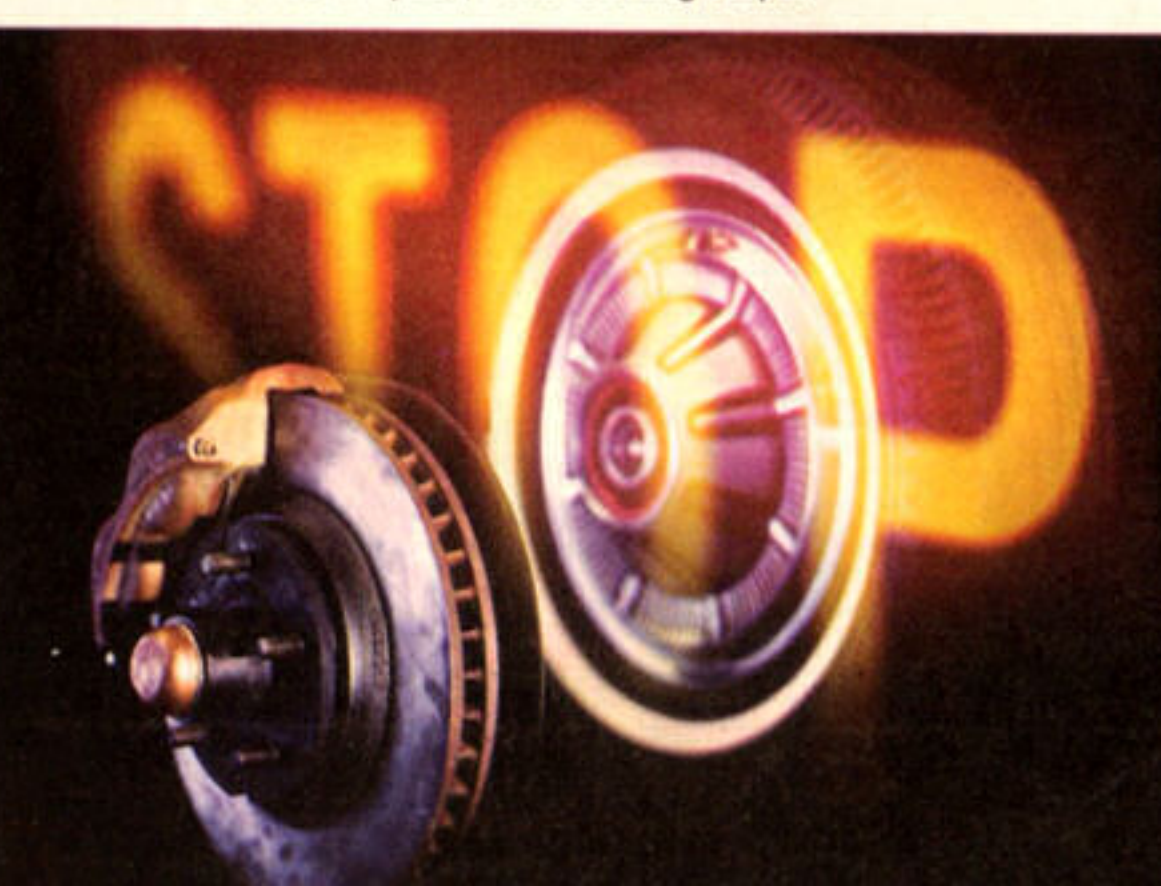
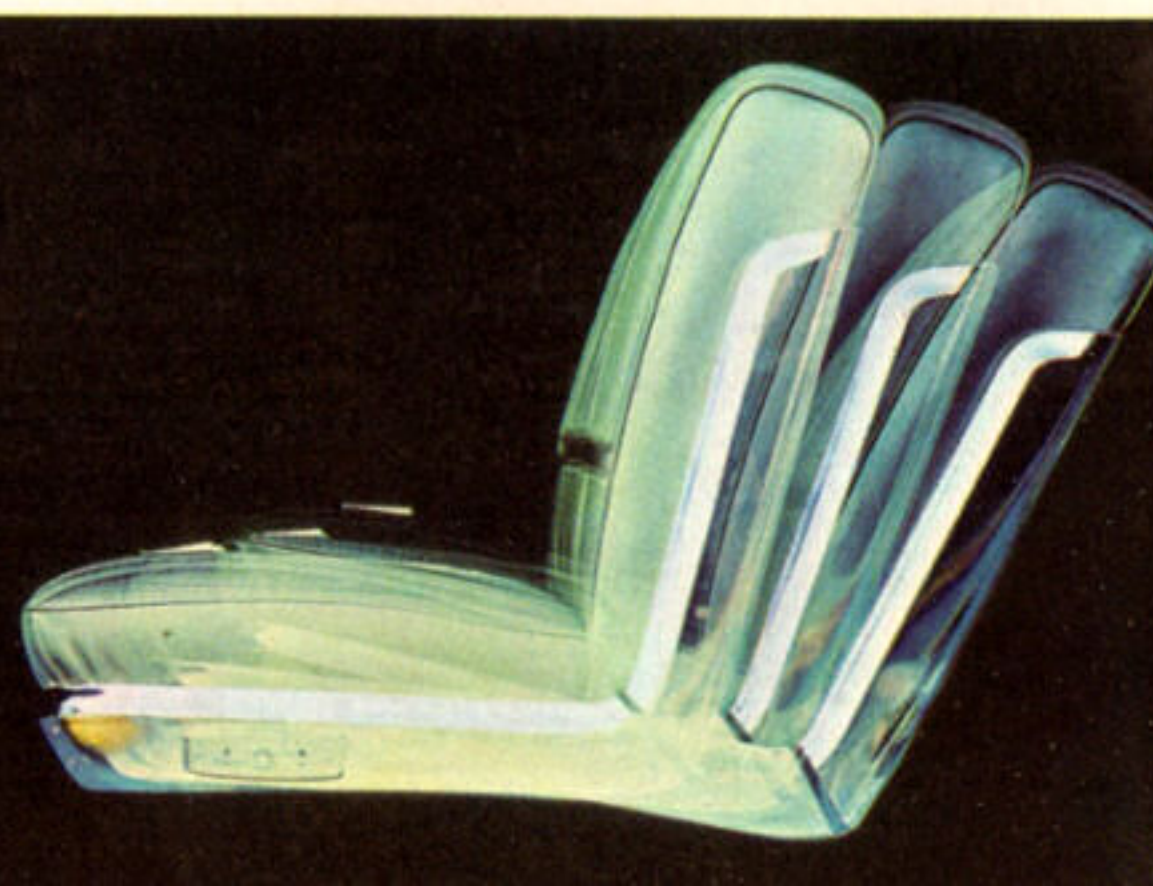
6-WAY POWER SEAT* Simple seatside controls permit the driver to precisely adjust the seat: raise or lower it, move it forward or back, tilt it up or down. An option that is particularly appreciated by women drivers. Also a great convenience in families where more than one person drives the car.

POWER TAILGATE WINDOW* For precise ventilation control while under way . . . or for quick access to cargo space when parked, this option works for the wagon owner every day. Operates from the driver seat or from outside at the rear. (Standard equipment on Ford Country Squires and Country Sedan with dual-facing rear seats.)

REMOTE-CONTROL MIRROR* Simple, quick adjustment while you drive. Outside mirror face turns with fingertip pressure on toggle control inside. No need to lower window.

POWER FRONT DISC BRAKES* A brand-new wagon option for '66. Designed to dissipate heat more quickly than drum-type brakes. Provide an extra measure of fade resistance under severe braking conditions, such as when a fully loaded wagon is required to make a series of quick, hard-braking stops.

DELUXE SEAT BELTS* Automatic retractors stow belts at seatside when not in use. Belts are color-keyed with vinyl-covered buckles. (Non-retracting seat belts standard on all Ford-built wagons.)



Standard Equipment

Ford Wagon

Ranch Wagon: 150-hp Big Six □ Synchro-Smooth Drive (fully sync. 3-speed man. trans.) □ Choice of 15 New Super Diamond Lustre Enamel Colors, 3 All-Vinyl Interior Trims □ Color-Keyed Carpeting □ Full-Width Seats with Foam-Padded Cushions □ Padded Instrument Panel and Sun Visors □ Front and Rear Seat Belts □ Heater-Defroster* □ Curved Side Glass □ Ford's New Rear Doorgate □ Lockable Under-Floor Rear Stowage Compartment □ "Air-Washed" Rear Window □ Suspended Accelerator Pedal □ Windshield Washers and Single-Speed Electric Wipers □ Safety-Yoke Door Latches □ Reversible Keys □ Outside Rearview Mirror □ Backup Lights □ Emergency Flasher.

Country Sedan includes all Ranch Wagon equipment with these variations: Choice of 4 All-Vinyl Interior Trims □ Country Sedan Bright-Metal Exterior Trim.

Country Squire includes all above equipment with these variations: Trim Choices—5 All-Vinyl, 1 Cloth-Vinyl □ Simulated Wood Body Trim □ Power Rear Window □ Electric Clock.

Dual-Facing Rear Seat Models (Country Sedan and Country Squire) include additionally: Rear-Facing Seats providing total seating capacity for a family of 10 □ Rear Bumper Steps □ Power Rear Window.

Fairlane Wagon

Fairlane Wagon: 120-hp Fairlane Six □ 3-Speed Manual Transmission □ Choice of 15 New Super Diamond Lustre Enamel Colors; 3 All-Vinyl Interior Trims □ Full-Width Seats

with Foam-Padded Cushions □ Padded Instrument Panel and Sun Visors □ Front and Rear Seat Belts □ Heater-Defroster* □ Ash Trays and Arm Rests □ Ford's New Rear Magic Doorgate □ Roll-Down Rear Window □ Suspended Accelerator Pedal □ Step-On Parking Brake □ Windshield Washers and Single-Speed Electric Wipers □ Color-Keyed Vinyl-Rubber Floor Mat □ Courtesy Lighting □ Concealed, Under-Floor Rear Stowage Compartment □ Safety-Yoke Door Latches □ Reversible Keys □ Outside Rearview Mirror □ Backup Lights □ Emergency Flasher □ Curved Side Glass □ Cigarette Lighter.

Fairlane 500 Wagon includes all the above with these variations: Choice of 5 Pleated All-Vinyl Interiors □ Color-Keyed Carpeting □ Stowage Compartment Lock.

Fairlane Squire Wagon includes all Fairlane and Fairlane 500 wagon equipment listed above plus: Simulated Wood Body Trim.

Falcon Wagon

Falcon 4-Door Wagon: 120-hp Fairlane Six □ 3-Speed Manual Transmission □ Choice of 15 New Super Diamond Lustre Enamel Colors; 3 All-Vinyl Interior Trims □ Full-Width Seats with Foam-Padded Cushions □ Dual Sun Visors □ Front Arm Rests, Ash Tray □ Padded Instrument Panel and Sun Visors □ Front and Rear Seat Belts □ Heater-Defroster* □ Color-Keyed 2-Spoke Deep-Dish Steering Wheel □ Courtesy Lighting □ Roll-Down Tailgate Window □ Suspended Accelerator Pedal □ Step-On Parking Brake □ Windshield Washers and Single-Speed Electric Wipers □ Black Vinyl-Rubber Floor and Cargo Area Mats □ Safety-Yoke Door Latches □ Reversible Keys □ Outside Rearview Mirror □ Backup Lights □ Emergency Flasher □ 14-Inch Low-Profile Tires.

Futura Wagon includes all Falcon wagon equipment listed above with these variations: Choice of 5 Pleated All-Vinyl Interior Trims □ Rear Arm Rests and Ash Tray □ Cigarette Lighter □ Color-Keyed Carpeting □ Color-Keyed Vinyl-Rubber Cargo Area Mat □ Color-Keyed 2-Spoke Deep-Dish Steering Wheel with Chrome Horn Ring.

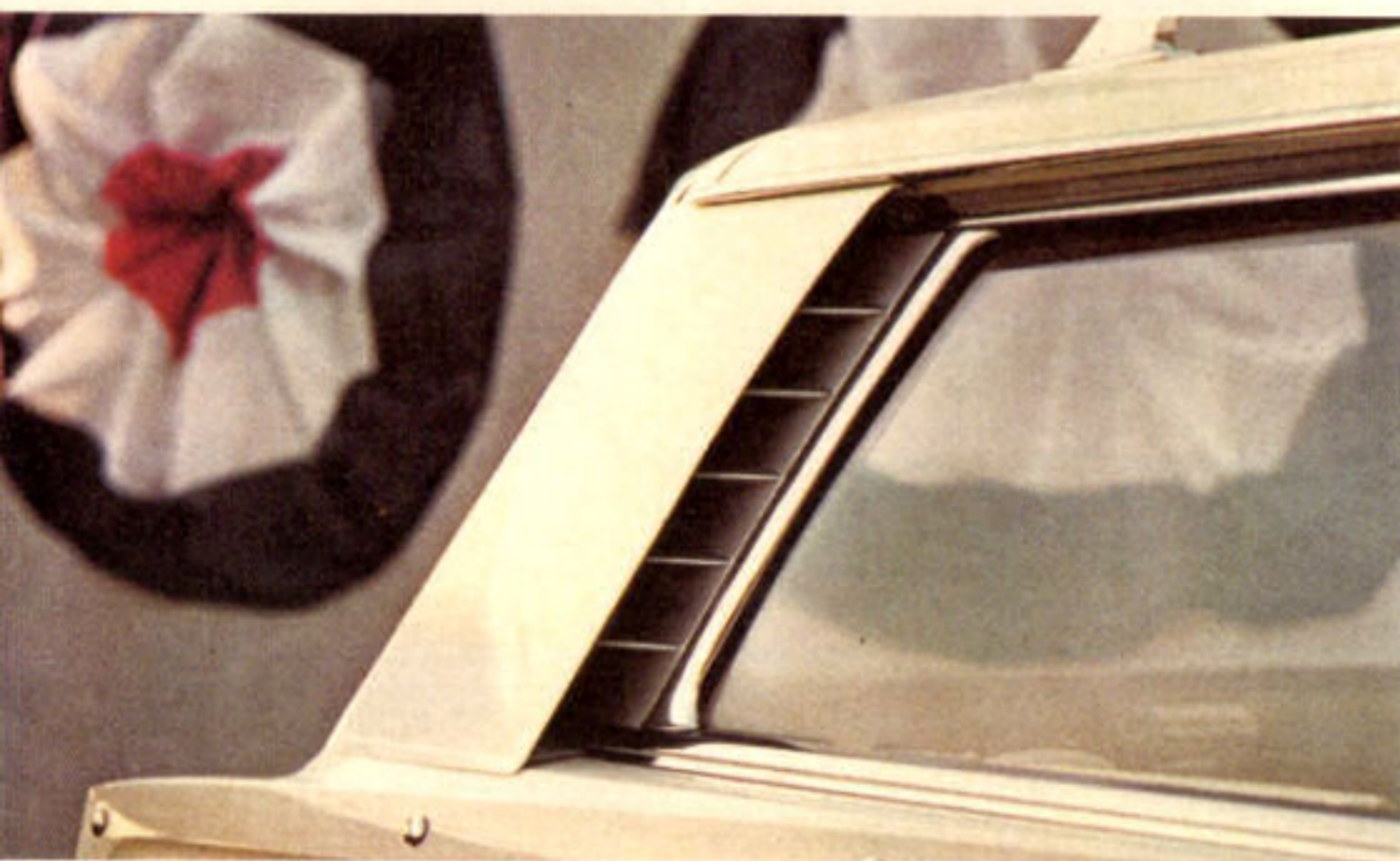
Falcon Club Wagon

Club Wagon: 105-hp Falcon Six □ Synchro-Smooth Drive (fully sync. 3-spd. man. trans.) □ Choice of 9 Diamond Lustre Enamel Colors; 4 All-Vinyl Interiors □ Windshield Washers and 2-Speed Electric Wipers □ 3-Spoke Deep-Dish Steering Wheel □ Foam-Cushioned Adjustable Driver's Seat □ Front Passenger Seat □ Second Row Seat □ Front Arm Rests, Ash Tray □ Padded Instrument Panel □ Seat Belts □ Dual Horns □ Dome Lights □ Outside Rearview Mirror □ Emergency Flasher □ Retractable Side Step □ Heater-Defroster.*

Custom Club Wagon includes all Club Wagon equipment with these variations: Choice of 4 Vinyl-Woven Plastic Interior Trims □ Full-Length Color-Keyed, Vinyl-Coated Rubber Floor Mat □ Full-Length Headlining □ Cigarette Lighter □ White Steering Wheel with Chrome Horn Ring □ Dual Sun Visors □ Bright Hub Caps.

Deluxe Club Wagon includes all Club Wagon and Custom Club Wagon equipment with these variations: Choice of 2 Diamond Lustre Enamel Colors; 2 Pleated All-Vinyl Interior Trims □ Padded Sun Visors □ Bright-Finish Bumpers □ Bright Body Side Molding with Anodized Aluminum Insert □ Spare Tire Cover.

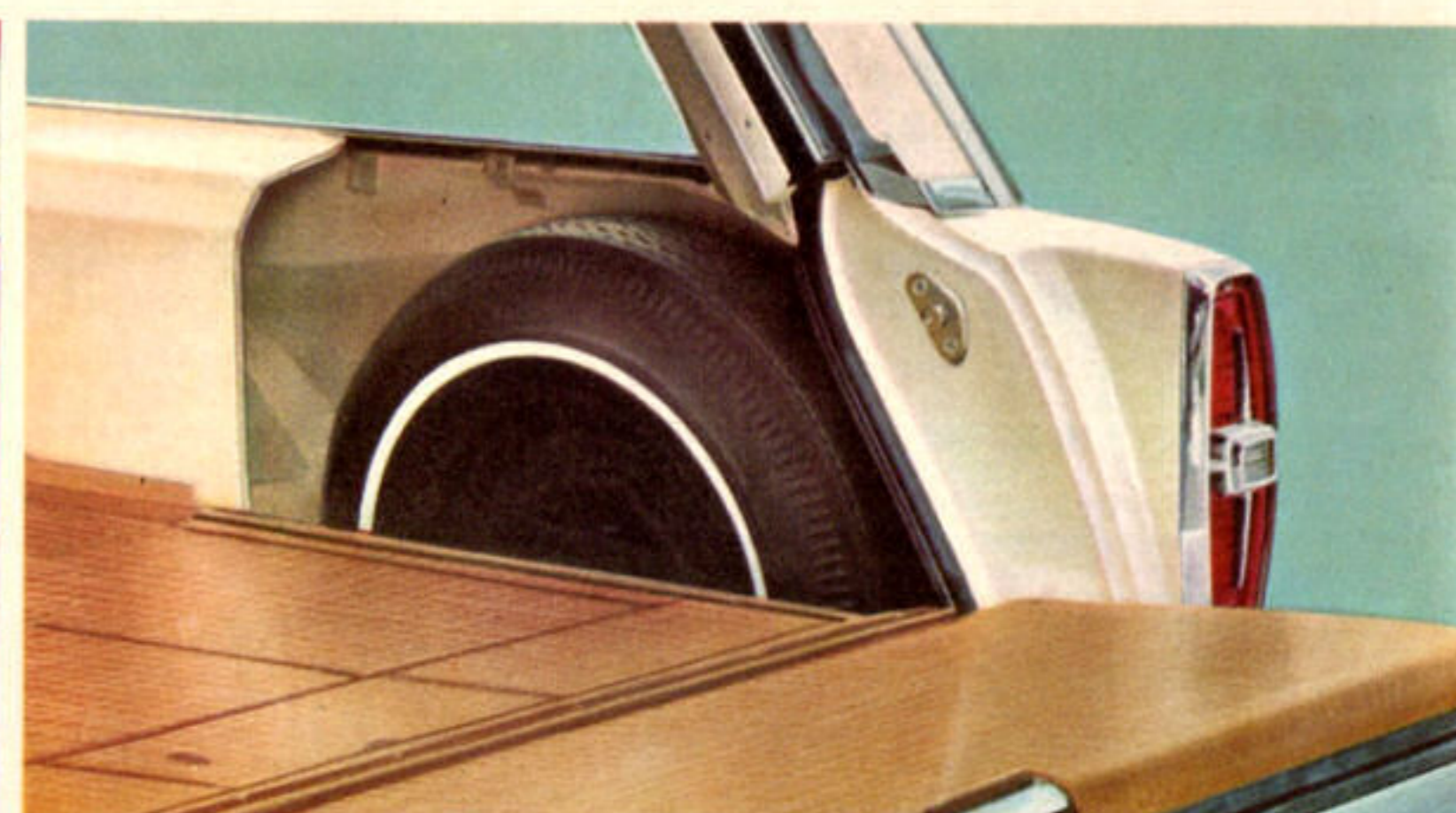
*See "Prices" on back cover



Ford wagon rear pillar air deflectors



Easy-to-use quick-converting second seats



Easy access, stand-up spare tire, low, flat tailgate

Unbeatable Wagon Ideas Make Ford America's Wagon Specialist

More imagination, more practicality, more wagon ideas that work hard to make station wagon living easier for you. That's what Ford designs and builds into every one of its 13 models. Imaginative, practical, wonderful wagon ideas like *rear pillar air deflectors* in big Ford wagons that help

keep the rear window clean. *Quick-converting second seats* in Ford-built wagons that unlatch from either side, help you fold the seat with a torsion bar assist and form a flat loadspace . . . all in one motion! *Stand-up spare tire*—a typical Ford wagon convenience—lets you get at the spare without

Specifications

Engines

(see chart for availability)

105-hp Falcon Six—170 cu. in.; 3.50" bore x 2.94" stroke; 9.1 to 1 comp. ratio; reg. fuel; auto. choke.

120-hp Fairlane Six—200 cu. in.; 3.68" bore x 3.13" stroke; 9.2 to 1 comp. ratio; 7 main bearings. Otherwise same as 105-hp Six above.

150-hp Ford Big Six—240 cu. in.; 4.00" bore x 3.18" stroke; 9.2 to 1 comp. ratio; 7 main bearings; reg. fuel; auto. choke.

200-hp Challenger V-8—289 cu. in.; 4.00" bore x 2.87" stroke; 9.3 to 1 comp. ratio; reg. fuel; 2-barrel carb.; auto. choke.

250-hp 352-Cu. In. V-8—352 cu. in.; 4.00" bore x 3.50" stroke; 9.3 to 1 comp. ratio; reg. fuel; 4-barrel carb.; auto. choke.

275-hp* Thunderbird V-8—390 cu. in.; 4.05" bore x 3.78" stroke; 9.5 to 1 comp. ratio; reg. fuel; 2-barrel carb.; auto. choke.

315-hp Thunderbird Special V-8—390 cu. in.; 4.05" bore x 3.78" stroke; 10.5 to 1 comp. ratio; prem. fuel; 4-barrel carb.; auto. choke.

345-hp Thunderbird 428 V-8—428 cu. in.; 4.13" bore x 3.98" stroke; 10.5 to 1 comp. ratio; prem. fuel; 4-barrel carb.; auto. choke.

Transmissions

Clutches—Semi-centrifugal design, single disc, dry plate, thick facings. Clutches for each wagon are custom tailored to meet the requirements of the engine specified.

3-Speed Manual Transmission—Has forged bronze synchronizers in 2nd and direct for smooth shifting. Anti-friction bearings throughout.

Synchro-Smooth Drive—The ease and smoothness of full synchronized manual shifting in all forward gears; clash-free downshifting to low even while under way.

Overdrive—Conventional 3-speed manual transmission with automatic 4th gear which cuts in above 28 mph, cuts out below 21 mph (approx.). Downshift to direct for brisk passing by flooring accelerator.

Cruise-O-Matic Drive—Three forward ratios, one reverse. Two selective drive ranges: 3-speed range starting in low for all normal driving or 2-speed range starting in intermediate for more surefooted driving on slippery surfaces. Effective engine braking in low.

16 FORD WAGON POWER TEAMS

| | STANDARD ENGINES | | | | OPTIONAL ENGINES | | | |
|--------------------|-------------------|---------------------|----------------|-----------------------|------------------------|-------------------------|------------------------------|----------------------------|
| | 105-hp Falcon Six | 120-hp Fairlane Six | 150-hp Big Six | 200-hp Challenger V-8 | 250-hp 352-cu. in. V-8 | 275-hp* Thunderbird V-8 | 315-hp Thunderbird Spec. V-8 | 345-hp Thunderbird 428 V-8 |
| FORD WAGONS | | | B-C-D | B-C-D | C | C | B-C | C |
| FAIRLANE WAGONS | | A-C | | B-C-D | | B-C | B-C | |
| FALCON WAGONS | | A-C | | B-C | | | | |
| FALCON CLUB WAGONS | B-C | | B-C† | | | | | |

Transmissions:

Standard A—3-Speed Manual
 B—Synchro-Smooth Drive (full sync. 3-spd. man.)
 Optional C—Cruise-O-Matic Drive D—Overdrive

*275 horsepower with Cruise-O-Matic; 265 horsepower with Synchro-Smooth Drive
 †150-hp Big Six optional in Falcon Club Wagons

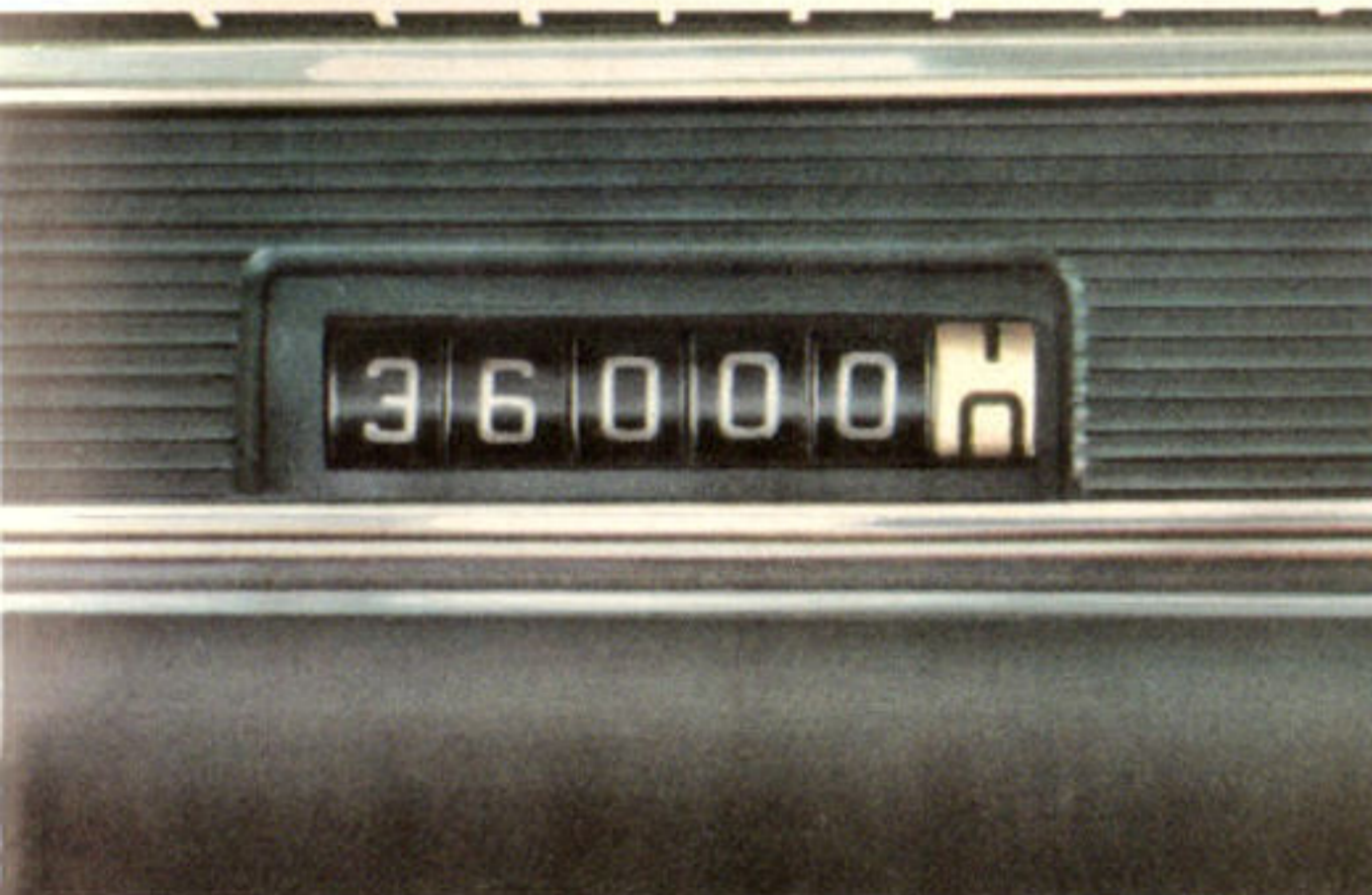
FORD WAGON DIMENSIONS

| | Length (overall) | Width | Height | Wheel-base | Treads (front-rear) | Curb Weight (approx.) | |
|----------------------|-------------------------|-------------------------|--------------------------|-------------------------------|-------------------------------|---|----------------------------------|
| FORD WAGONS | 210.9" | 79" | 56.7" | 119" | 62"-62" | Ranch Wagon Country Sedan Country Squire | 4065 lb. 4090 lb. 4145 lb. |
| FAIRLANE WAGONS | 199.8" | 74.7" | 56.2" | 113" | 58"-58" | Fairlane Wagon Fairlane 500 Wagon Fairlane Squire | 3323 lb. 3333 lb. 3341 lb. |
| FALCON WAGONS | 198.7" | 74" | 56.2" | 113" | 58"-58" | Falcon Wagon Futura Wagon | 3155 lb. 3163 lb. |
| FALCON CLUB WAGONS | 167.5" | 75.8" | 75" | 90" | 60"-60.2" | Club Wagon Custom Club Wagon Deluxe Club Wagon | 2880 lb. 2980 lb. 3020 lb. |
| | Loadspace (tailgate up) | Length* (tailgate down) | Loadspace (widest point) | Width (between wheelhousings) | Rear Opening (height x width) | Cargo Volume (total in cubic feet) | |
| FORD WAGONS | 7.8 ft. | 9.5 ft. | 61.7" | 48.6" | 29.9" x 53.8" | 103† (6-pass.) 98.9‡ (DFRS) | |
| FAIRLANE WAGONS | 7.4 ft. | 9.1 ft. | 59.1" | 42.6" | 29" x 51.7" | 93.4§ | |
| FALCON WAGONS | 7.4 ft. | 9.1 ft. | 59.1" | 44.8" | 29" x 51.7" | 85.1 | |
| FALCON CLUB WAGONS | 8.9 ft. (doors closed) | | 67.2" | 48.2" | 46.8" x 49.2" | 194 | |
| Extended Body Option | 10.4 ft. (doors closed) | | 67.2" | 48.2" | 46.8" x 49.2" | 242 | |

*With front seat in rearmost position

†Include below-floor compartments of 11.7 and 7.6 cu. ft. respectively in 6-passenger and dual-facing rear seat models

‡Includes below-floor compartment of 8.2 cu. ft.



Twice-a-Year Maintenance, typical of Ford's economy



Wagon-sized brakes, for wagon-size loads, an extra margin of safety

disturbing all the cargo. *Twice-a-Year Maintenance*—up to 36,000 miles between major lubrications, 6,000 miles between oil changes and minor lubrications—plus all the Ford-pioneered service-savers (back cover) to make Ford wagon ownership thrifty as well as fun. *Wagon-sized brakes*

Ford wagons have brakes tailored to their bigger size and weight for safer stopping. And there are many more . . . new dual-action Magic Doorgate, dual-facing rear seats, unique Squire woodlike body trim . . . all the ideas that make Fords the favorite wagons in the U.S.A.

Specifications (continued)

FORD WAGONS

"WORTH MORE" FEATURES: In addition to all the new Ford wagon features you can read about in this catalog, there are many others which will make the 1966 Ford wagon you buy now more rewarding in driving pleasure and resale value. Just a few of these "Worth More" features include: Safety-Yoke door latches, aluminum scuff plates, parallel-action electric windshield wipers, step-on parking brake, curved side glass, crank-adjusted vent windows, suspended accelerator, brake and clutch pedals, deep-dish design steering wheel with chrome horn ring, reversible keys and "keyless" locking, right-hand ignition, dual sun visors with retention clips, front and rear arm rests, coat hooks, protective wheel housings under front fenders, 2-position front door checks, rear door assist springs, counterbalanced hood and tailgate and many, many more.

ENGINE FEATURES: Ford engine economy and durability are results of modern, efficient design, high quality materials, and painstaking manufacture. Other contributing features are: 6000-mile (or 6-month) full-flow oil filter; dry-type air cleaner; year-round 190° thermostat; 12-volt electrical system; 42-amp. alternator; 54-plate, 45 amp-hr battery (66-plate, 55 amp-hr with 250- and 315-hp V-8's and Cruise-O-Matic); weatherproof ignition with constant-resistance wiring and air-cooled breaker points; positive-engagement starter; fully aluminized muffler.

REAR AXLE: Semi-floating, heavy-duty type with deep-offset hypoid gears. Straddle-mounted drive pinion with 3 roller bearings. Large diameter axle shafts. High capacity wheel bearings.

FRAME: Perimeter design consisting of front end assembly, rear end assembly, and four torque box assemblies connected by formed center sidersails. The frame is ladder-type construction with five reinforced crossmembers. Node-point body mounting results in superior noise and vibration suppression characteristics.

FRONT SUSPENSION: Wide 62" tread; drag-strut, Ball-Joint type suspension members with mounting feature that allows slight rearward movement of front wheels to reduce the effects of bumps and road faults. Ball joints packed with special 36,000-mile lubricant retained by full-life seals. Rubber-bushed stabilizer helps to control roll on turns. Tapered roller wheel bearings with 30,000-mile check interval (repack as required). Specially calibrated shock absorbers with all-weather fluid for softer ride, better year-round control.

REAR SUSPENSION: Wide 62" tread. Three-link, coil spring system with long and short mounting-link arrangement to control dive and squat tendencies in braking and acceleration. Lateral track bar centers axle, resists body sway and roll in turns. All links and track bar rubber-bushed for smooth, quiet operation. Shock absorbers sea-leg-mounted to resist body side movement, have all-weather fluid for more uniform ride control.

STEERING: Recirculating-ball type steering gear with antifriction bearings throughout, plus high numerical ratio for easier steering. Flexible coupling in shaft helps insulate steering column and wheel from road shock. Nylon bearings in tie rod and pitman arm pivots reduce steering effort; backed with special 36,000-mile lubricant retained by full-life seals. Overall steering ratio 30.9 to 1; with power steering 23 to 1. Turning diameter, approximately 41 ft. *Integral Power Steering* locates hydraulic mechanism within gear box; has improved pump, longer-lived seals and more compact design.

BRAKES: Self-adjusting, self-energizing design. Brakes adjust automatically when applied while car is moving backwards. Easy-operating suspended pedal, dash-mounted master cylinder, 11-inch composite drums, grooved for better cooling. Total lining area 225 sq. in. Foot-operated parking brake. Optional power brakes have special low pedal position.

TIRES: Low-profile design, 4-ply rating black tubeless tires with Tyrex rayon cord. Safety-type rims. Basic size: 8.15 x 15. Higher rated tires available. See your Ford Dealer for complete details.

CAPACITIES: Fuel 20 gal.; oil 5 qt. (all engines); cooling system (with heater) 13 qt. (Big Six), 13 qt. (289 V-8); 20.5 qt. (other V-8's).

FAIRLANE WAGONS

"WORTH MORE" FEATURES: In addition to all the new Fairlane wagon features you can read about in this catalog, there are many others which will make the 1966 Fairlane wagon you buy now more rewarding in driving pleasure and resale value. Just a few of these "Worth More" features include: Safety-Yoke door latches, aluminum scuff plates, parallel-action electric windshield wipers, step-on parking brake, curved side glass, suspended accelerator, brake and clutch pedals, deep-dish design steering wheel with chrome horn ring, reversible keys and "keyless" locking, right-hand ignition, dual sun visors with retention clips, front and rear arm rests, coat hooks, 2-position front door checks, rear door assist springs, counterbalanced hood and tailgate and many, many more.

ENGINE FEATURES: Fairlane engine economy and durability are results of modern, efficient design, high quality materials, and painstaking manufacture. Other contributing features: 6000-mile (or 6-month) full-flow oil filter; dry element air cleaner; year-round 190° thermostat; 12-volt electrical system; 38-amp. alternator; 54-plate, 45 amp-hr battery; weatherproof ignition with constant-resistance wiring and air-cooled breaker points; positive-engagement starter; fully aluminized muffler.

REAR AXLE: Semi-floating type with deep-offset hypoid gears. Straddle-mounted drive pinion with 3 roller bearings. Induction-hardened, forged shafts with permanently lubricated wheel bearings.

FRONT SUSPENSION: Ball-Joint type with coil springs mounted on upper arms. Angle-Poised for anti-dive control. 36,000-mile (or 3-year) lube intervals. Strut-stabilized lower arms. Link-type, rubber-bushed ride stabilizer. Shock absorbers have all-weather fluid for better year-round ride control.

REAR SUSPENSION: Asymmetrical design with rear axle located forward of spring center for anti-squat resistance on braking and takeoff. Extra-long, leaf-type springs with wide spring base for more stable, leveled ride. All-weather shock absorber fluid for more uniform ride control.

STEERING: Recirculating-ball type steering gear provides easy handling. Linkage system lubricated for 36,000 miles (or 3 years). Overall steering ratio 29.4 to 1. Turning diameter 41 ft. Improved power steering option has flexible steering shaft coupling to reduce road shock to steering wheel; ratio 21.6 to 1.

BRAKES: Self-adjusting, self-energizing design. Brakes adjust automatically when applied while car is moving backwards. 10-inch composite drums. Total lining area 191 sq. in. with 390 V-8's; 172 sq. in. with Six and 289 V-8.

TIRES: Low-profile design, 4-ply rating blackwall tubeless with Tyrex rayon cord. Safety-type rims. Tire size: 7.75 x 14.

CAPACITIES: Fuel 20 gal.; oil 4.5 qt. (Six), 5 qt. (V-8's); cooling system (with heater) 9.5 qt. (Six), 15 qt. (289 V-8); 20.5 qt. 390 V-8.

TWICE-A-YEAR MAINTENANCE: '66 wagons built by Ford are designed to go 6,000 miles (or 6 months) between oil changes and minor chassis lubrications; 36,000 miles* (or 3 years*, whichever comes first) between major chassis lube. Other '66 Ford service-savers include: 36,000-mile (or 2-year) engine coolant-antifreeze, self-adjusting brakes, long-life Sta-Ful battery, shielded alternator, rust- and corrosion-resistant aluminized muffler and galvanized underbody parts. The '66 wagons from America's station wagon specialist need so little service it's just good sense to see that they get the best—at your Ford Dealer's. His factory-trained mechanics and special tools add up to the greatest service combination for your Ford.

NEW CAR WARRANTY: Ford total-car quality

The illustrations and product information contained herein were current at the time this publication was approved for printing. However, in order to continue to offer the finest automotive products available, Ford Motor Company reserves the right to change specifications, designs, models or prices without notice and without liability for such changes.

FALCON WAGONS

"WORTH MORE" FEATURES: In addition to all the new Falcon wagon features you can read about in this catalog, there are many others which will make the 1966 Falcon wagon you buy now more rewarding in driving pleasure and resale value. Just a few of these "Worth More" features include: Safety-Yoke door latches, aluminum scuff plates, parallel-action electric windshield wipers, step-on parking brake, curved side glass, suspended accelerator, brake and clutch pedals, deep-dish design steering wheel, reversible keys and "keyless" locking, right-hand ignition, dual sun visors with retention clips, front and rear arm rests, coat hooks, 2-position front door checks, rear door assist springs, counterbalanced hood and tailgate and many, many more.

ENGINE FEATURES: Falcon engine economy and durability are results of modern, efficient design, high quality materials and painstaking manufacture. Other contributing factors include: 6000-mile (or 6-month) full-flow oil filter; replaceable, dry element air cleaner; year-round 190° thermostat; 12-volt electrical system; 38-amp. alternator; 54-plate, 45 amp-hr battery; weatherproof ignition system; positive-engagement starter; new-design exhaust system with rust- and corrosion-resistant aluminized muffler.

REAR AXLE: Semi-floating type with deep-offset hypoid gears. Induction-hardened, forged shafts with permanently lubricated wheel bearings.

FRONT SUSPENSION: Ball-Joint type with coil springs pivot-mounted on upper arms. 36,000-mile (or 3-year) lube intervals, full-life seals. Angle-Poised design for anti-dive control. Link-type, rubber-bushed ride stabilizer. Tapered roller wheel bearings. All-weather shock absorber fluid for better year-round ride control.

REAR SUSPENSION: Asymmetrical design with rear axle forward of spring center for anti-squat on takeoff. Long, wide leaf springs with tip inserts and wide spring base provide soft, stable, leveled ride. Diagonally mounted shock absorbers have all-weather fluid.

STEERING: Recirculating-ball type steering gear provides easy handling. Anti-friction bearings throughout. Permanently lubricated steering linkage joints. Overall steering ratio, 27 to 1. Turning diameter, 41.0 feet. Improved power steering option with 22 to 1 ratio for faster, more responsive operation.

BRAKES: Self-adjusting, self-energizing design. 10-inch composite drums. Molded linings for long life and fade resistance. Total lining area 164 sq. in.

TIRES: Low-profile design, 4-ply rating black tubeless with Tyrex rayon cord. Safety-type rims. Tire size: 7.75 x 14.

CAPACITIES: Fuel 20 gal.; oil 4.5 qt. (Six), 5 qt. (V-8); cooling system (with heater) 9.5 qt. (Six), 15 qt. (V-8).

FALCON CLUB WAGONS

"WORTH MORE" FEATURES: In addition to all the new Falcon Club Wagon features you can read about in this catalog, there are many others which will make the Club Wagon, Custom Club Wagon or Deluxe Club Wagon you buy now more rewarding in driving pleasure and resale value. Just a few of these "Worth More" features include: metropolitan front end design and big one-piece windshield for outstanding "up-front" visibility and control, double doors at curbside and rear (both with openings over 4 ft. wide), retractable side step, flat, level load floor, dual horns, parallel-action 2-speed electric windshield wipers, chair-high, individual front seats, seat belts, sun visors with retention clips, foam-padded driver's seat, galvanized underbody parts and many, many more.

ENGINE FEATURES: Up-front location for better cooling, easier accessibility, clear load floor. Hinged engine cover, fully insulated from heat and noise. For economy and longer life, Falcon engines have short-stroke, low-friction design; manually operated choke; full-flow oil filter; oil-bath air cleaner; pressurized cooling system with 190° thermostat; 12-volt electrical system; 38-amp. alternator; 54-plate, 45 amp-hr battery; weatherproof ignition; positive-engagement starter; fully aluminized muffler and tailpipe.

REAR AXLE: Semi-floating type with offset hypoid gears. Induction-hardened forged shafts with permanently lubricated wheel bearings.

SUSPENSIONS: Longitudinal, semi-elliptic leaf springs front and rear with rubber-bushed supports and compression-type shackles, giving variable-rate characteristics for more controlled ride. Rigid I-beam type front axle of heat-treated forged alloy steel. Precision-fitted steering knuckles with bronze kingpin bushings and special rubber seals. Link-type rubber-bushed ride stabilizer. Direct-acting hydraulic shock absorbers. Tapered roller front wheel bearings.

STEERING: Low-friction, recirculating-ball type steering gear provides easy handling. Anti-friction bearings throughout. Overall steering ratio 20 to 1. Turning diameter, 34.7 ft.

BRAKES: Self-adjusting, self-energizing hydraulic with double-sealed composite drums. Diameter, front and rear: 10 in. Molded linings for long life and fade resistance. Total lining area 168 sq. in.

TIRES: 4-ply rated; black tubeless with Tyrex rayon cord, safety-type rims. Basic size: 6.50 x 13 on 5 1/2" rims. Several optional tire sizes are offered with Club Wagons. Your Ford Dealer will be happy to detail them all for you.

CAPACITIES: Fuel 14 gal. (both engines); oil 4.5 qt. (Falcon Six), 5 qt. (Big Six); cooling system (with heater) 9.5 qt. (Falcon Six), 12.5 qt. (Big Six).

FORD WAGON TRAILER TOWING RECOMMENDATIONS are included, along with much additional helpful information, in the "1966 Ford Cars and Trucks for Recreation" brochure. Ask your Ford Dealer for a copy.

PRICES (All series): Heater-defroster is included as standard equipment on all models, second row seat belts are standard on Falcon Club Wagons. However, these features may be deleted on car order if desired at an appropriate price reduction. All power assists, optional equipment and accessories as well as some items illustrated or referred to as options, optional or available are at extra cost. For the price of the model with the equipment you desire, consult your Ford Dealer.

*America's Total
Performance Cars*

FORD

MUSTANG • FALCON • FAIRLANE • FORD • THUNDERBIRD

PRODUCTS OF



Litho in U.S.A. Rev. 1-66

Every 1966 Ford-built car was designed step by step to be a safer, more convenient, economical and enjoyable automobile. Such protective items as front and rear seat belts, padded instrument panel and sun visors, deep-dish steering wheel, Safety-Yoke door latches, turn signals, backup lights, emergency flasher, recessed controls, and many others are standard equipment in every

Ford-built car*... designed into the car for greater safety. Safety authorities agree: Safe driving means proper use of the automobile and its safety equipment, strict obedience to traffic laws at all times and—more importantly—development of the alert, defensive driving habits that are the motorists' best protection against unsafe conditions on the road. *Falcon Club Wagons have certain equipment exceptions