



**TOYOTA**

2025 CAMRY

2025 CAMRY

# Every day deserves more fun.

The 2025 Toyota Camry's refined performance and design let you chase your daily thrills in style. With you in mind, Camry comes in a wide range of models, so there's a perfect match for you. Whether giving your adventures a confidence boost with available Electronic On-Demand All-Wheel Drive (AWD) or taking your daily commutes as far as it can with hybrid efficiency, Camry has the perfect fit for your lifestyle.



\*For illustrative purposes only, actual model may vary.





XSE shown in Heavy Metal with Midnight Black Metallic roof (extra-cost color).

## PERFORMANCE

# Make daily journeys extraordinary.

Engineered for better efficiency, Camry's all-hybrid powertrain has an EPA-estimated rating of up to 51 mpg combined.<sup>1</sup> With an impressive up to 232 net combined hp and available Electronic On-Demand All-Wheel Drive (AWD) capability, it will keep the good drives going.

### Electronic On-Demand All-Wheel Drive

Camry's available AWD offers peace-of-mind performance for every drive. When the system senses slippage at the front wheels, it automatically sends torque to the rear wheels to help maximize traction wherever you're going. So whether you're driving in the rain or snow, or taking on corners, you'll find confidence every time you're behind the wheel.

### Dynamic horsepower and acceleration

Beneath Camry's hood is a 225 net combined hp hybrid engine, with available AWD 232 net combined hp, that packs a mighty punch. Its grin-inducing acceleration and thrilling power on tap make it incredibly fun to drive.

### Impressive efficiency

Camry takes you farther with fewer stops, thanks to an EPA-estimated combined rating of up to 51 mpg.<sup>1</sup> That means less time spent at the pump and more time spent enjoying scenic drives.



XLE shown in Ocean Gem. Options shown.





DESIGN

# Leave a lasting impression.

Experience design with purpose in Camry, where every detail is crafted for a stylish and dynamic drive. Make memorable first impressions with Camry's bold exterior; its sleek roofline, low stance and wide build create a visual symphony that goes beyond the surface.



XLE shown in Ocean Gem; XSE shown in Heavy Metal with Midnight Black Metallic roof (extra-cost color).\*



XLE interior shown in Light Gray leather and Dinamica® microfiber trim.



XSE interior shown in Cockpit Red leather trim.

## Sporty XSE design

Design with purpose. Camry XSE's racing-inspired front-side canards, aerodynamic air ducts, 19-in. black and smoke-gray finished alloy wheels and color-matching mesh grille add sporty, yet functional, touches.

## Modern interior design

Camry's interior blends premium style and comfort. From its sleek dashboard to an available panoramic roof, Camry inspires you to make the most of every drive.

## Sport pedals

It's all about the details. Camry's available aluminum sport pedals give an extra "oomph" to its premium look and feel.

## Seat design

From sporty to luxurious, Camry XSE and XLE elevate your cabin to new heights. Enjoy refined, stylish details in XSE's leather-trimmed seats or XLE's leather- and suede-trimmed seats.

\*For illustrative purposes only, actual model may vary.



### Available multi-stage heated and ventilated front seats

Camry's available heated and ventilated front seats provide maximum comfort, no matter the weather, with just the touch of a button.

## COMFORT

# Refined in all the right ways.

Camry offers enhanced comfort for your daily drives.



### Available rain-sensing wipers

Let your windshield wipers be the judge. Available rain-sensing wipers detect rain on your windshield and are designed to automatically start wiping based on the amount of rainfall.



### Available heated steering wheel

Warm up your hands on those extra chilly drives by activating Camry's available heated steering wheel.



## TECHNOLOGY

# Intelligence at your side.

Technology at your fingertips. From its display that helps keep you focused on the drive, to its system that connects you wirelessly to your customized entertainment, Camry keeps a personalized drive always within reach.



XSE interior shown in Cockpit Red leather trim. Screen depiction accurate at time of posting.

### Available Traffic Jam Assist

Enjoy city driving with newfound ease. Traffic Jam Assist (TJA)<sup>2</sup> helps navigate the ebb and flow of stop-and-go traffic on limited access roadways at speeds under 25 mph, by providing hands-free control of the vehicle's steering, braking and acceleration when Dynamic Radar Cruise Control (DRCC)<sup>28</sup> is engaged. Active Drive Connect trial or subscription<sup>21</sup> required. 4G network required.

### Standard Blind Spot Monitor with Rear Cross-Traffic Alert

Standard Blind Spot Monitor (BSM)<sup>3</sup> warns you when a vehicle in the next lane enters Camry's blind spot on either side of the vehicle. And when you're in reverse, Rear Cross-Traffic Alert (RCTA)<sup>4</sup> helps detect vehicles approaching from either side, warning you with side mirror indicators and a warning tone.

### Available Front Cross-Traffic Alert

Available on XSE and XLE, Front Cross-Traffic Alert (FCTA)<sup>5</sup> is designed to detect the approach of crossing vehicles when Camry enters an intersection at a low speed. FCTA alerts the driver via an audible alert and visual alerts on both the Multi-Information Display (MID) and the Head-Up Display (HUD) to help give you greater awareness of your surroundings.



XSE shown in Heavy Metal with Midnight Black Metallic roof (extra-cost color). \* Simulation shown.



XSE shown in Wind Chill Pearl with Midnight Black Metallic roof (extra-cost color). \* Simulation shown. Options shown.



XSE interior shown in Cockpit Red leather trim.

## AUDIO MULTIMEDIA

# Amplify your drive.

Enhance every drive with an experience that's all about you. Whether enjoying the sounds of your favorite soundtrack or interacting with an interface that you're familiar with, you'll always be surrounded by comfort.



## Wireless Apple CarPlay®

Bring along a familiar face. With Camry's wireless Apple CarPlay® compatibility, you can use your compatible iPhone®<sup>67</sup> with the multimedia system to get directions, make calls, send and receive messages and listen to music, all while staying focused behind the wheel.



## Wireless Android Auto™

Stay connected on the road. By connecting your compatible Android™<sup>68</sup> phone with the audio multimedia system, Android Auto™<sup>69</sup> lets you get real-time traffic alerts, make and receive phone calls, listen to your favorite soundtrack and more.



## JBL® Premium Audio system

Immerse yourself in quality sound with Camry's available JBL®<sup>10</sup> Premium Audio. A 9-speaker, 800-watt audio system equipped with a subwoofer, it provides phenomenal sound that amplifies every drive.



## SiriusXM® 3-month trial

SiriusXM®<sup>11</sup> has premium entertainment that you won't hear anywhere else. With the 3-month trial, you get 425+ channels, including 165+ channels in your vehicle, to enjoy ad-free music, plus sports, news, talk, comedy and more. Experience even more on the SiriusXM® App, featuring expertly curated podcasts, Xtra channels of music, personalized Pandora® stations, SiriusXM® video and more.

# Innovation for the unexpected.

Take advantage of smart and convenient technologies designed to simplify your everyday life. Trial periods are available on select models for the listed Connected Services.\*<sup>12</sup> 4G network dependent.



## Available Remote Connect

Manage your vehicle through the Toyota app.<sup>13, 14</sup> Available on select models.

- ✓ Digital Key<sup>41</sup> Capability (if equipped)
- ✓ Unlock/Lock
- ✓ Remote Notifications
- ✓ Guest Driver
- ✓ Smartwatch Compatibility



## Wi-Fi Connect

Turn your Toyota into a hotspot with 4G connectivity.<sup>15</sup>

- ✓ AT&T Hotspot
- ✓ Integrated Streaming for Apple Music<sup>16</sup> (separate subscription required)
- ✓ Integrated Streaming for Amazon Music<sup>17</sup> (separate subscription required)

\*To view included trial details, please visit [toyota.com/connected-services](http://toyota.com/connected-services).



## Safety Connect<sup>®</sup>

Round-the-clock help when the unexpected happens.<sup>18</sup>

- ✓ Emergency Assistance Button (SOS)
- ✓ Enhanced Roadside Assistance<sup>19</sup>
- ✓ Automatic Collision Notification
- ✓ Stolen Vehicle Locator<sup>20</sup>



## Drive Connect

Enhanced features to get you where you need to be.<sup>21</sup>

- ✓ Destination Assist<sup>22</sup>
- ✓ Intelligent Assistant<sup>23</sup>
- ✓ Cloud Navigation<sup>24</sup>

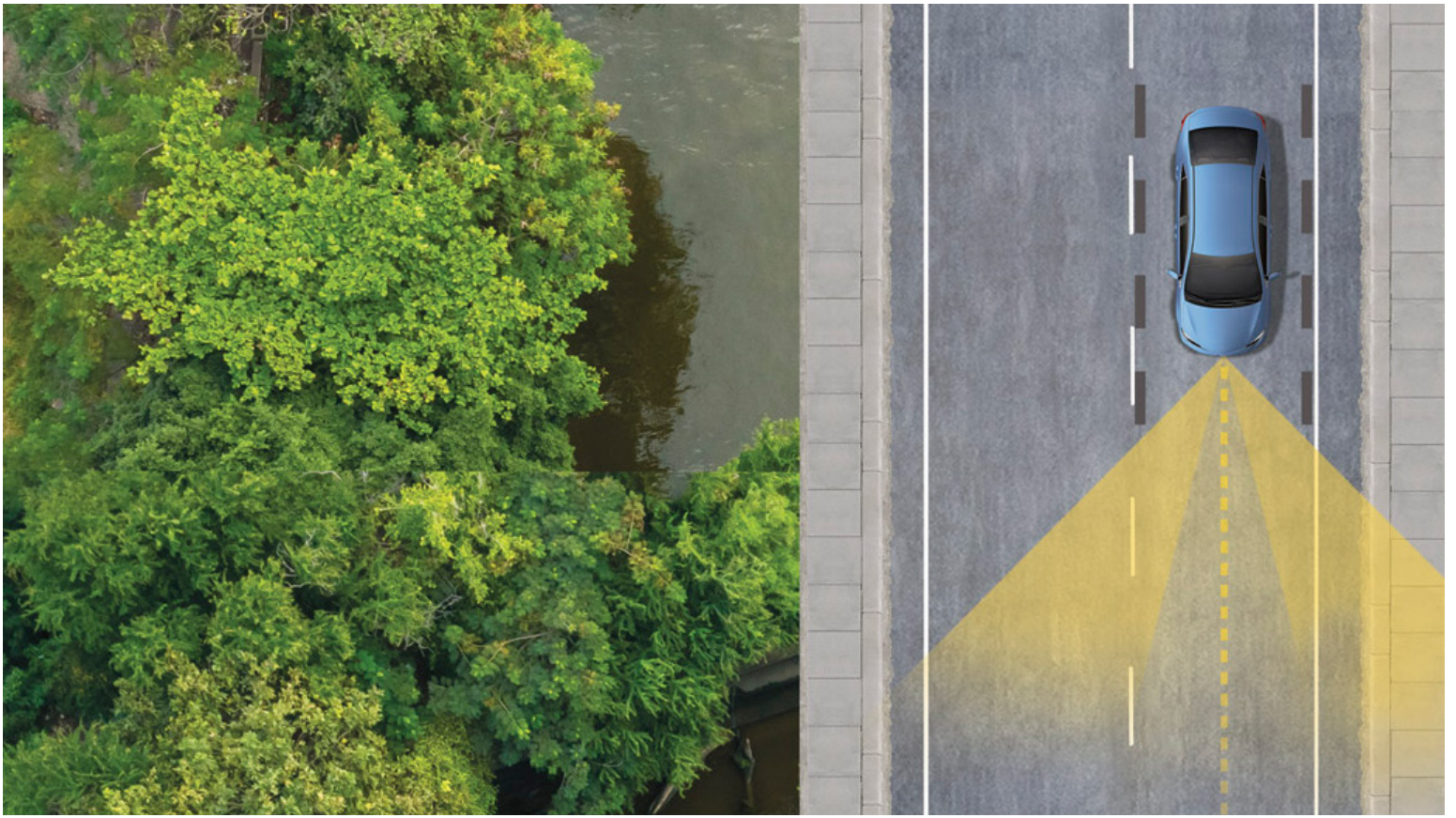


## Service Connect

Being proactive to help keep your vehicle in peak condition<sup>25</sup>

- ✓ Vehicle Health Report
- ✓ Vehicle Maintenance Alert
- ✓ Maintenance Reminder





TOYOTA SAFETY SENSE™ (TSS 3.0)

# Peace of mind comes standard.

Toyota Safety Sense™ (TSS)<sup>26</sup> is a suite of safety and driver-assistance technologies designed to support driver awareness, decision-making and vehicle operation. These features are available on many new Toyota vehicles at no additional cost.



Pre-Collision System with Pedestrian Detection<sup>27</sup>



Full-Speed Range Dynamic Radar Cruise Control<sup>28</sup>



Lane Departure Alert with Steering Assist<sup>29</sup>



Automatic High Beams<sup>30</sup>



Lane Tracing Assist<sup>31</sup>



Road Sign Assist<sup>32</sup>



Proactive Driving Assist<sup>33</sup>



# BEYOND ZERO

Beyond Zero is Toyota's vision to reach carbon neutrality with our products, services and operations, and go beyond, as we find new ways to create a better world. We currently offer more low and zero emission vehicles combined than any other automaker, to give customers numerous choices to reduce their carbon footprint.

## Hybrid EV

Hybrid Electric Vehicles start, refuel and handle like the gas-only Toyotas you already know and love — just with better mpg.

## Plug-in Hybrid EV

Plug-in Hybrid Electric Vehicles run just like hybrids, using a combination of fuel and battery-powered electric motor(s), but thanks to their larger battery pack, they can run farther on electric power alone.

## Battery EV

These pure Electric Vehicles replace gasoline and combustion engines with battery-powered electric motors, providing smooth and almost instantaneous torque.

## Fuel Cell EV

Fuel Cell Electric Vehicles combine stored hydrogen with oxygen from the outside air to generate their own electric charge to power the motor.





## CAMRY MODELS



### LE

Includes these key features

#### Mechanical/Performance

- ✓ 2.5L 4-Cyl. Gas/Electric Hybrid (HEV) with 225 net combined hp
- ✓ Available Electronic On-Demand All-Wheel Drive (AWD) with 232 net combined hp
- ✓ Electronically controlled Continuously Variable Transmission (ECVT) with sequential shift mode
- ✓ Normal, Eco, EV<sup>34</sup> and Sport drive modes

#### Exterior Features

- ✓ Bi-LED projector low- and high-beam headlights, Automatic High Beams (AHB)<sup>30</sup> and auto on/off
- ✓ LED combination taillights with bulb turn signal and reverse light
- ✓ Black horizontal bar front grille
- ✓ 16-in. 10-spoke silver-painted alloy wheels

#### Interior Features

- ✓ Dual zone automatic climate control with air filter, humidity sensor and rear-seat vents
- ✓ 6-way manual-adjustable driver's seat
- ✓ 60/40 split fold-down rear seat
- ✓ 7-in. digital gauge cluster with selectable gauges
- ✓ Multi-function key fob with Push Button Start
- ✓ Five USB ports<sup>35</sup> and Qi-compatible wireless smartphone charging<sup>36</sup>

#### Audio Multimedia

- ✓ Audio includes:
  - 8-in. Toyota Audio Multimedia touchscreen and six speakers
  - Wireless Apple CarPlay<sup>86</sup> compatibility
  - Wireless Android Auto<sup>TM9</sup> compatibility
  - SiriusXM<sup>811</sup> 3-month trial subscription

#### Connected Services<sup>12</sup> Trials

- ✓ Safety Connect<sup>®</sup> with up to 10-year trial.<sup>18</sup> 4G network dependent.
- ✓ Remote Connect-capable,<sup>13</sup> subscription required, select features only. 4G network dependent.
- ✓ Service Connect with up to 10-year trial.<sup>25</sup> 4G network dependent.
- ✓ Drive Connect-capable,<sup>21</sup> subscription required, select features only. 4G network dependent.
- ✓ Wi-Fi Connect with up to 3 GB within 30-day trial.<sup>15</sup> 4G network dependent.

#### Safety Features

- ✓ Toyota Safety Sense<sup>TM</sup> 3.0 (TSS 3.0)<sup>26</sup>
- ✓ Full-Speed Range Dynamic Radar Cruise Control (DRCC)<sup>28</sup>
- ✓ Star Safety System<sup>TM</sup>
- ✓ Eight airbags<sup>38</sup>
- ✓ Blind Spot Monitor (BSM)<sup>3</sup> with Rear Cross-Traffic Alert (RCTA)<sup>4</sup>

#### Packages/Options

- ✓ Convenience Package includes:
  - HomeLink<sup>®39</sup> universal transceiver
  - Auto-dimming rearview mirror
  - Smart Key System on front doors
  - Power-adjustable driver's seat
- ✓ Cold Weather Package includes:
  - Heated front seats
  - Heated steering wheel
- ✓ Power tilt/slide moonroof



### SE

Adds to or replaces features offered on LE

#### Mechanical/Performance

- ✓ 2.5L 4-Cyl. Gas/Electric Hybrid (HEV) with 225 net combined hp
- ✓ Available Electronic On-Demand All-Wheel Drive (AWD) with 232 net combined hp
- ✓ Electronically controlled Continuously Variable Transmission (ECVT) with sequential shift mode
- ✓ Normal, Eco, EV<sup>34</sup> and Sport drive modes

#### Exterior Features

- ✓ Bi-LED projector low- and high-beam headlights, Automatic High Beams (AHB)<sup>30</sup> and auto on/off
- ✓ LED combination taillights with bulb turn signal and reverse light
- ✓ Black sport mesh front grille
- ✓ 18-in. multi-spoke black-finished alloy wheels

#### Interior Features

- ✓ SofTex<sup>®40</sup>- and fabric-trimmed seats
- ✓ 8-way power-adjustable driver's seat
- ✓ Leather-trimmed tilt/telescopic steering wheel with paddle shifters
- ✓ Multi-function key fob with Push Button Start

#### Audio Multimedia

- ✓ Audio includes:
  - 8-in. Toyota Audio Multimedia touchscreen and six speakers
  - Wireless Apple CarPlay<sup>86</sup> compatibility
  - Wireless Android Auto<sup>TM9</sup> compatibility
  - SiriusXM<sup>811</sup> 3-month trial subscription

#### Connected Services<sup>12</sup> Trials

- ✓ Safety Connect<sup>®</sup> with up to 10-year trial.<sup>18</sup> 4G network dependent.
- ✓ Remote Connect-capable,<sup>13</sup> subscription required, select features only. 4G network dependent.
- ✓ Service Connect with up to 10-year trial.<sup>25</sup> 4G network dependent.
- ✓ Drive Connect-capable,<sup>21</sup> subscription required, select features only. 4G network dependent.
- ✓ Wi-Fi Connect with up to 3 GB within 30-day trial.<sup>15</sup> 4G network dependent.

#### Safety Features

- ✓ Toyota Safety Sense<sup>TM</sup> 3.0 (TSS 3.0)<sup>26</sup>
- ✓ Star Safety System<sup>TM</sup>

#### Packages/Options

- ✓ Convenience Package includes:
  - HomeLink<sup>®39</sup> universal transceiver
  - Auto-dimming rearview mirror
  - Smart Key System on front doors
- ✓ Cold Weather Package includes:
  - Heated front seats
  - Heated steering wheel
- ✓ Multimedia Upgrade Package includes:
  - 12.3-in. Toyota Audio Multimedia touchscreen
- ✓ Power tilt/slide moonroof



### XSE

Adds to or replaces features offered on SE

#### Mechanical/Performance

- ✓ 2.5L 4-Cyl. Gas/Electric Hybrid (HEV) with 225 net combined hp
- ✓ Available Electronic On-Demand All-Wheel Drive (AWD) with 232 net combined hp
- ✓ Electronically controlled Continuously Variable Transmission (ECVT) with sequential shift mode
- ✓ Normal, Eco, EV<sup>34</sup> and Sport drive modes

#### Exterior Features

- ✓ Dual LED projector low- and high-beam headlights, Automatic High Beams (AHB)<sup>30</sup> and auto on/off
- ✓ Premium LED combination taillights
- ✓ Color-keyed sport mesh front grille
- ✓ 19-in. black and smoke-gray-finished alloy wheels

#### Interior Features

- ✓ Leather-trimmed seats
- ✓ Heated 8-way power-adjustable front seats
- ✓ 12.3-in. digital gauge cluster with selectable gauges
- ✓ Smart Key System on front doors and trunk with Push Button Start

#### Audio Multimedia

- ✓ Audio includes:
  - 12.3-in. Toyota Audio Multimedia touchscreen and six speakers
  - Wireless Apple CarPlay<sup>86</sup> compatibility
  - Wireless Android Auto<sup>TM9</sup> compatibility
  - SiriusXM<sup>811</sup> 3-month trial subscription

#### Connected Services<sup>12</sup> Trials

- ✓ Safety Connect<sup>®</sup> with up to 10-year trial.<sup>18</sup> 4G network dependent.
- ✓ Remote Connect with up to 1-year trial.<sup>13</sup> 4G network dependent.
- ✓ Service Connect with up to 10-year trial.<sup>25</sup> 4G network dependent.
- ✓ Drive Connect with up to 1-year trial.<sup>21</sup> 4G network dependent.
- ✓ Wi-Fi Connect with up to 3 GB within 30-day trial.<sup>15</sup> 4G network dependent.

#### Safety Features

- ✓ Toyota Safety Sense<sup>TM</sup> 3.0 (TSS 3.0)<sup>26</sup>
- ✓ Star Safety System<sup>TM</sup>

#### Packages/Options

- ✓ Premium Package includes:
  - 9-speaker JBL<sup>®10</sup> Premium Audio system
  - Ventilated front seats
  - 10-in. Head-Up Display (HUD)
  - Digital Key<sup>41</sup> capability
  - Panoramic glass roof with front power tilt/slide moonroof
- ✓ Premium Plus Package includes Premium Package features and:
  - Traffic Jam Assist (TJA)<sup>2</sup>
  - Front Cross-Traffic Alert (FCTA)<sup>5</sup>
  - Lane Change Assist (LCA)<sup>42</sup>
  - Panoramic View Monitor (PVM)<sup>44</sup>
  - Front and Rear Parking Assist with Automatic Braking (PA w/AB)<sup>45</sup>
  - Rear Cross-Traffic Braking (RCTB)<sup>46</sup>
  - Driver Attention Monitor
- ✓ Panoramic glass roof with front power tilt/slide moonroof

## CAMRY MODELS



### XLE

Adds to or replaces features offered on LE

#### Mechanical/Performance

- ✓ 2.5L 4-Cyl. Gas/Electric Hybrid (HEV) with 225 net combined hp
- ✓ Available Electronic On-Demand All-Wheel Drive (AWD) with 232 net combined hp
- ✓ Electronically controlled Continuously Variable Transmission (ECVT) with sequential shift mode
- ✓ Normal, Eco, EV<sup>24</sup> and Sport drive modes

#### Exterior Features

- ✓ Dual LED projector low- and high-beam headlights, Automatic High Beams (AHB)<sup>30</sup> and auto on/off
- ✓ Premium LED combination taillights
- ✓ Dark metallic gray horizontal bar front grille
- ✓ 18-in. two-tone multi-spoke machined and black-finished alloy wheels

#### Interior Features

- ✓ Leather- and microfiber-trimmed seats
- ✓ Heated 8-way power-adjustable front seats
- ✓ 12.3-in. digital gauge cluster with selectable gauges
- ✓ Smart Key System on front doors and trunk with Push Button Start

#### Audio Multimedia

- ✓ Audio includes:
  - 12.3-in. Toyota Audio Multimedia touchscreen and six speakers
  - Wireless Apple CarPlay<sup>®6</sup> compatibility
  - Wireless Android Auto<sup>™9</sup> compatibility
  - SiriusXM<sup>®11</sup> 3-month trial subscription

#### Connected Services<sup>12</sup> Trials

- ✓ Safety Connect<sup>®</sup> with up to 10-year trial.<sup>18</sup> 4G network dependent.
- ✓ Remote Connect with up to 1-year trial.<sup>13</sup> 4G network dependent.
- ✓ Service Connect with up to 10-year trial.<sup>25</sup> 4G network dependent.
- ✓ Drive Connect with up to 1-year trial.<sup>21</sup> 4G network dependent.
- ✓ Wi-Fi Connect with up to 3 GB within 30-day trial.<sup>15</sup> 4G network dependent.

#### Safety Features

- ✓ Toyota Safety Sense<sup>™</sup> 3.0 (TSS 3.0)<sup>26</sup>
- ✓ Star Safety System<sup>™</sup>

#### Packages/Options

- ✓ Premium Package includes:
  - 9-speaker JBL<sup>®10</sup> Premium Audio system
  - Ventilated front seats
  - 10-in. Head-Up Display (HUD)
  - Digital Key<sup>41</sup> capability
  - Panoramic glass roof with front power tilt/slide moonroof
  - Rain-sensing windshield wipers
  - Driver's-seat and outer-mirror memory function
  - Driver Attention Monitor
- ✓ Premium Plus Package includes Premium Package features and:
  - Traffic Jam Assist (TJA)<sup>2</sup>
  - Front Cross-Traffic Alert (FCTA)<sup>5</sup>
  - Lane Change Assist (LCA)<sup>42</sup>
  - Panoramic View Monitor (PVM)<sup>44</sup>
  - Front and Rear Parking Assist with Automatic Braking (PA w/AB)<sup>45</sup>
  - Rear Cross-Traffic Braking (RCTB)<sup>46</sup>
  - Driver Attention Monitor
- ✓ Panoramic glass roof with front power tilt/slide moonroof



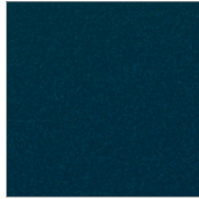
CAMRY COLORS & TRIMS



Midnight Black Metallic



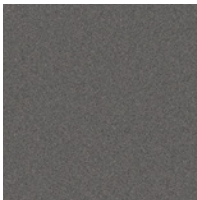
Reservoir Blue



Ocean Gem



Supersonic Red<sup>47</sup>



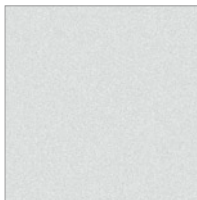
Heavy Metal<sup>47</sup>



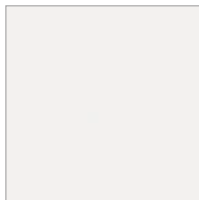
Underground



Celestial Silver Metallic



Wind Chill Pearl<sup>47</sup>



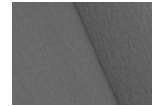
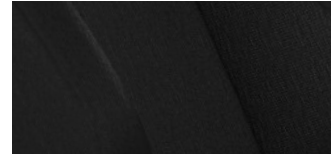
Ice Cap

Available Midnight Black Metallic roof<sup>47</sup>



Supersonic Red, Heavy Metal, Wind Chill Pearl, Ocean Gem

LE fabric shown in Black



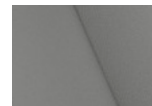
Boulder

XLE trim shown in Light Gray



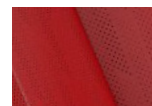
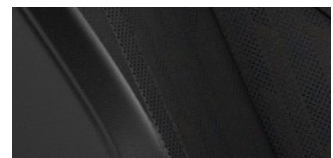
Black

SE trim shown in Black



Boulder

XSE trim shown in Black



Cockpit Red

CAMRY WHEELS



LE 16-in. 10-spoke silver-painted alloy wheel



SE 18-in. multi-spoke black-finished alloy wheel



XLE 18-in. two-tone multi-spoke machined and black-finished alloy wheels



XSE 19-in. black and smoke-gray-finished alloy wheels\*

\*For illustrative purposes only, actual model may vary.



## CAMRY ACCESSORIES

This is a great way to add extra personality to your Camry. Not every accessory is available in your area, so for a complete list of accessories, go to [toyota.com/camry/accessories](http://toyota.com/camry/accessories).



19-in. dark gray wheels



Door edge film



Front accent lighting



Illuminated trunk sill



Illuminated doorsills



Rear spoiler



Dashcam<sup>48</sup>



Blackout emblem overlays



Kurgo® dog booster seat<sup>60,\*</sup>

## WARRANTIES

Every Toyota Car, Truck and SUV is built to exceptional standards. And that's not idle boasting. We back it up with these Limited Warranty Coverages:

**Basic:** 36 months/36,000 miles (all components other than normal wear and maintenance items).

**Hybrid-Related Component Coverage:** Hybrid-related components, including the battery control module, hybrid control module and inverter with converter, are covered for 8 years/100,000 miles. Refer to applicable *Warranty and Maintenance Guide* for details.

**Hybrid Battery:** HV battery is covered for 10 years or 150,000 miles, whichever comes first. Warranty coverage is subject to terms and conditions. Refer to applicable *Warranty and Maintenance Guide* for details.

**Powertrain:** 60 months/60,000 miles (engine, transmission/transaxle, drive system, seatbelts and airbags).

**Rust-Through:** 60 months/unlimited miles (corrosion perforation of sheet metal).

**Emissions:** Coverages vary under Federal and California regulations. Refer to applicable *Warranty and Maintenance Guide* for details.

**Accessories:** For Genuine Toyota Accessories purchased at the time of the new vehicle purchase, the Toyota Accessory Warranty coverage is in effect for 36 months/36,000 miles

from the vehicle's in-service date, which is the same coverage as the Toyota New Vehicle Limited Warranty.

For Genuine Toyota Accessories purchased after the new vehicle purchase the coverage is 12 months, regardless of mileage, from the date the accessory was installed on the vehicle, or the remainder of any applicable new vehicle warranty, whichever provides greater coverage.

Third-party accessories are not designed, manufactured or evaluated by Toyota. The accessories and any damage to other components or altered performance of the vehicle that may be caused by the accessories are not covered by your vehicle's warranty and Toyota disclaims all liability therefor. See third-party warranty website for information on the applicable third-party accessory.

You may be eligible for transportation assistance if it's necessary that your vehicle be kept overnight for repairs covered under warranty. Please see your authorized Toyota dealership for further details.

For complete details about Toyota's warranties, please visit [www.toyota.com](http://www.toyota.com), refer to the applicable *Warranty and Maintenance Guide* or see your Toyota dealer.

See numbered footnotes in Disclosures section.  
\*This is a third-party-warrantied accessory.

**CAMRY FEATURES<sup>4,9</sup>**

**S = Standard** O = Optional P = Package

**Exterior**

	LE	SE	XSE	XLE
16-in. 10-spoke silver-painted alloy wheels	S			
18-in. multi-spoke black-finished alloy wheels		S		
19-in. black and smoke-gray-finished alloy wheels			S	
18-in. two-tone multi-spoke machined and black-finished alloy wheels				S
Bi-LED projector low- and high-beam headlights, Automatic High Beams (AHB) <sup>30</sup> and auto on/off	S	S		
Dual LED projector low- and high-beam headlights, Automatic High Beams (AHB) <sup>30</sup> and auto on/off			S	S
LED Daytime Running Lights (DRL) with on/off feature	S	S	S	S
LED combination taillights with bulb turn signal and reverse light	S	S		
Premium LED combination taillights			S	S
Black horizontal bar front grille	S			
Black sport mesh front grille		S		
Color-keyed sport mesh front grille			S	
Dark metallic gray horizontal bar front grille				S
Sport side rocker panels		S	S	
Black front side air curtains	S			S
Black front side canards and sport side air curtains		S		
Color-keyed front side canards and gloss-black sport side air curtains			S	
Two-tone exterior color (color-keyed body with Midnight Black Metallic roof) <sup>47</sup>			O	
Heated power outside mirrors with integrated turn signals and blind spot warning indicators <sup>3</sup>	S	S	S	S
Heated power outside mirrors with integrated turn signals, blind spot warning indicators <sup>3</sup> and cameras for Panoramic View Monitor (PVM) <sup>44</sup>			P	
Heated power outside mirrors with integrated turn signals, blind spot warning indicators, <sup>3</sup> cameras for Panoramic View Monitor (PVM) <sup>44</sup> and memory function				P
Black window trim	S	S	S	
Chrome-finished window trim				S
Color-keyed outside door handles	S	S		
Color-keyed outside door handles with touch-sensor lock/unlock feature	P	P	S	S
Digital Key <sup>41</sup> capability			P	P
Power tilt/slide moonroof	O	O		
Panoramic glass roof with front power tilt/slide moonroof			O	O
Washer-linked intermittent windshield wipers	S	S	S	S
Rain-sensing washer-linked intermittent windshield wipers				P
High Solar Energy-Absorbing (HSEA) glass	S	S	S	S
Acoustic noise-reducing front side glass			S	S
Color-keyed rear spoiler		S		
Gloss-black rear spoiler			S	
Single exhaust with dual chrome tips		S	S	
Single exhaust	S			S
Roof-mounted shark-fin antenna	S	S	S	S
Black rear "CAMRY" lettering		S	S	
Chrome-finished rear "CAMRY" lettering	S			S
Chrome AWD badge	O	O	O	O

**Interior**

Dual zone automatic climate control with air filter, humidity sensor and rear-seat vents	S	S	S	S
Qi-compatible wireless smartphone charging <sup>36</sup> with charge indicator light	S	S	S	S
7-in. digital gauge cluster — with selectable gauge display screens and fuel economy, Driver Assist, vehicle/trip information and warning messages	S	S		
12.3-in. digital gauge cluster — with selectable gauge display screens and fuel economy, Driver Assist, vehicle/trip information, and warning messages			S	S
Tire Pressure Monitor System (TPMS) <sup>37</sup> with direct pressure readout and individual tire location alert	S	S	S	S
Fabric-trimmed front seats with seatback pockets; 8-way power-adjustable front driver's seat with power lumbar support; 6-way manual-adjustable passenger front seat	P			
Fabric-trimmed front seats with passenger-side seatback pocket; 6-way manual-adjustable front driver's and passenger seat	S			
SoftTex <sup>40</sup> and fabric-trimmed front seats with seatback pockets; 8-way power-adjustable front driver's seat with power lumbar support; 6-way manual-adjustable passenger front seat		S		
Leather-trimmed front seats with seatback pockets; 8-way power-adjustable front driver's seat with power lumbar support; 8-way power-adjustable passenger front seat			S	
Leather- and microfiber-trimmed front seats with seatback pockets; 8-way power-adjustable front driver's seat with power lumbar support; 8-way power-adjustable passenger front seat				S
Multi-stage heated front seats	P	P	S	S
Multi-stage heated and ventilated front seats			P	P
Rear adjustable headrests			S	S

See numbered footnotes in Disclosures section.



CAMRY FEATURES<sup>4,9</sup>

S = Standard O = Optional P = Package

Interior (Continued)

	LE	SE	XSE	XLE
60/40 split fold-down rear seat with center armrest with cup holders	S	S	S	S
Full-Speed Range Dynamic Radar Cruise Control (DRCC) <sup>28</sup>	S	S	S	S
Tilt/telescopic steering wheel	S			
Leather-trimmed heated tilt/telescopic steering wheel	P			S
Leather-trimmed heated tilt/telescopic steering wheel with touch sensor				P
Leather-trimmed tilt/telescopic steering wheel with paddle shifters		S		
Leather-trimmed heated tilt/telescopic steering wheel with paddle shifters and touch sensor			P	
Leather-trimmed heated tilt/telescopic steering wheel with paddle shifters		P	S	
4-mode switch (EV, <sup>34</sup> Eco, Normal, Sport)	S	S	S	S
10-in. color Head-Up Display (HUD) with speedometer, shift position, compass, TSS 3.0 indicators, audio, phone and Hybrid System Indicator			P	P
Panoramic View Monitor (PVM) <sup>44</sup> with 360-degree Overhead View in low-speed drive and reverse and Curb View			P	P
Aluminum sport pedals		S	S	
Leather-trimmed shift knob		S	S	S
Multi-function key fob with remote entry system with lock, two-stage unlock, panic, trunk-release functions, Push Button Start with remote illuminated entry	S	S		
Smart Key System on front doors and trunk with Push Button Start, remote keyless entry system and remote illuminated entry	P	P	S	S
Power windows with auto up/down, jam protection in all positions and retained-power features	S	S	S	S
Rear window defogger and outside mirror heater function with timer	S	S	S	S
Power door locks with shift-linked automatic locking feature with anti-lockout feature	S	S	S	S
Day/night rearview mirror	S	S		
Auto-dimming rearview mirror with HomeLink <sup>®39</sup> universal garage door opener	P	P	S	S
Overhead console with sunglasses storage	S	S	S	S
Covered center console, armrest and storage	S	S	S	S
Passenger-side lockable illuminated glove compartment	S	S	S	S
One 12V auxiliary power outlet <sup>50</sup>	S	S	S	S
One USB-A media port <sup>35</sup> and two USB-C charging ports <sup>35</sup> up front, with one USB-A and one USB-C charging port <sup>35</sup> in the rear	S	S	S	S
Dual sun visors with sliding extensions and illuminated vanity mirrors	S	S	S	S
White LED ambient interior lighting			S	S
Two front and two rear cup holders; two front door and two rear bottle holders	S	S	S	S
Electric Parking Brake (EPB) <sup>51</sup> with Brake Hold <sup>52</sup> function	S	S	S	S

Audio Multimedia

8-in. Toyota Audio Multimedia touchscreen with USB-A media port, <sup>35</sup> hands-free phone capability and music streaming via Bluetooth <sup>®53</sup> wireless technology, SiriusXM <sup>®11</sup> 3-month trial subscription. See <a href="http://toyota.com/connected-services">toyota.com/connected-services</a> for details.	S	S		
12.3-in. Toyota Audio Multimedia touchscreen with USB-A media port, <sup>35</sup> hands-free phone capability and music streaming via Bluetooth <sup>®53</sup> wireless technology, SiriusXM <sup>®11</sup> 3-month trial subscription. See <a href="http://toyota.com/connected-services">toyota.com/connected-services</a> for details.			P	S
Wireless Apple CarPlay <sup>®6</sup> compatibility	S	S	S	S
Wireless Android Auto <sup>™9</sup> compatibility	S	S	S	S
6-speaker audio system	S	S	S	S
9-speaker JBL <sup>®10</sup> Premium Audio including subwoofer and amplifier			P	P

Connected Services<sup>12</sup> Trials

Safety Connect <sup>®</sup> with up to 10-year trial subscription <sup>18</sup> — includes Emergency Assistance button, enhanced Roadside Assistance, <sup>19</sup> Automatic Collision Notification and Stolen Vehicle Locator. <sup>20</sup> Subscription required after trial. 4G network dependent.	S	S	S	S
Service Connect with up to 10-year trial subscription <sup>25</sup> — receive personalized maintenance updates and vehicle health reports. Subscription required after trial. 4G network dependent.	S	S	S	S
Remote Connect <sup>13</sup> — remotely interact with your vehicle through the Toyota app <sup>14</sup> via your smartwatch. Depending on grade, allows you to lock/unlock doors, start and stop the vehicle, locate your last parked location, check vehicle status and monitor guest drivers. Subscription required after trial. 4G network dependent.	Capable (subscription required)	Capable (subscription required)	1-year trial subscription	1-year trial subscription
Wi-Fi Connect with 30-day or up to 3 GB trial subscription <sup>15</sup> — includes AT&T Wi-Fi hotspot and Integrated Streaming (Apple Music <sup>®16</sup> and Amazon Music <sup>17</sup> ) compatibility. Subscription required after trial. 4G network dependent.	S	S	S	S
Drive Connect <sup>21</sup> — includes Cloud Navigation <sup>24</sup> with Google Points of Interest (POI) data, Intelligent Assistant <sup>23</sup> with Hey, Toyota, and Destination Assist. <sup>22</sup> Subscription required after trial. 4G network dependent.	Capable (subscription required)	Capable (subscription required)	1-year trial subscription	1-year trial subscription

Safety and Convenience

	LE	SE	XSE	XLE
<b>STAR SAFETY SYSTEM™</b> Star Safety System™ — includes Vehicle Stability Control (VSC), <sup>54</sup> Traction Control (TRAC), Anti-lock Brake System (ABS), Electronic Brake-force Distribution (EBD), Brake Assist (BA) and Smart Stop Technology® (SST) <sup>55</sup>	S	S	S	S
Eight airbags <sup>58</sup> — includes driver and front passenger airbag, driver and front passenger seat-mounted side airbags, driver and front passenger knee airbags, and front and rear side curtain airbags	S	S	S	S
LATCH (Lower Anchors and Tethers for Children) includes lower anchors on outboard rear seats and tether anchors on all rear seats	S	S	S	S
Child-protector rear door locks and power window lockout control	S	S	S	S
Toyota Safety Sense™ 3.0 (TSS 3.0) <sup>26</sup> — Pre-Collision System with Pedestrian Detection (PCS w/PD), <sup>27</sup> Full-Speed Range Dynamic Radar Cruise Control (DRCC), <sup>28</sup> Lane Departure Alert with Steering Assist (LDA w/SA), <sup>29</sup> Lane Tracing Assist (LTA), <sup>31</sup> Road Sign Assist (RSA), <sup>32</sup> Automatic High Beams (AHB), <sup>30</sup> Proactive Driving Assist (PDA) <sup>33</sup>	S	S	S	S
Blind Spot Monitor (BSM) <sup>3</sup> with Rear Cross-Traffic Alert (RCTA) <sup>4</sup>	S	S	S	S
Front and Rear Parking Assist with Automatic Braking (PA w/AB) <sup>45</sup>			P	P
Hill Start Assist Control (HAC) <sup>56</sup>	S	S	S	S
Anti-theft system with alarm and engine immobilizer <sup>57</sup>	S	S	S	S
Integrated backup camera with dynamic gridlines <sup>58</sup>	S	S	S	S

Packages and Options

Convenience Package — includes auto-dimming rearview mirror with HomeLink <sup>®39</sup> universal garage door opener, and Smart Key System on front doors, and power-adjustable driver's seat	P			
Convenience Package — includes auto-dimming rearview mirror with HomeLink <sup>®39</sup> universal garage door opener, and Smart Key System on front doors		P		
Premium Package — includes 9-speaker JBL <sup>®10</sup> Premium Audio system, ventilated front seats, 10-in. Head-Up Display (HUD), Digital Key <sup>41</sup> capability, panoramic glass roof with front power tilt/slide moonroof (removal of overhead sunglasses storage)			P	
Premium Package — includes 9-speaker JBL <sup>®10</sup> Premium Audio system, ventilated front seats, 10-in. Head-Up Display (HUD), Digital Key <sup>41</sup> capability, panoramic glass roof with front power tilt/slide moonroof (removal of overhead sunglasses storage), rain-sensing windshield wipers, driver's-seat and outer-mirror memory function				P
Premium Plus Package — includes Traffic Jam Assist (TJA), <sup>2</sup> Front Cross-Traffic Alert (FCTA), <sup>5</sup> Lane Change Assist (LCA), <sup>42</sup> Panoramic View Monitor (PVM), <sup>44</sup> Front and Rear Parking Assist with Automatic Braking (PA w/AB), <sup>45</sup> Rear Cross-Traffic Braking (RCTB), <sup>46</sup> Driver Attention Monitor, 9-speaker JBL <sup>®10</sup> Premium Audio system, ventilated front seats, 10-in. Head-Up Display (HUD), Digital Key <sup>41</sup> capability, panoramic glass roof with front power tilt/slide moonroof (removal of overhead sunglasses storage)			P	
Premium Plus Package — includes Traffic Jam Assist (TJA), <sup>2</sup> Front Cross-Traffic Alert (FCTA), <sup>5</sup> Lane Change Assist (LCA), <sup>42</sup> Panoramic View Monitor (PVM), <sup>44</sup> Front and Rear Parking Assist with Automatic Braking (PA w/AB), <sup>45</sup> Rear Cross-Traffic Braking (RCTB), <sup>46</sup> Driver Attention Monitor, 9-speaker JBL <sup>®10</sup> Premium Audio system, ventilated front seats, 10-in. Head-Up Display (HUD), Digital Key <sup>41</sup> capability, panoramic glass roof with front power tilt/slide moonroof (removal of overhead sunglasses storage), rain-sensing windshield wipers, driver's-seat and outer-mirror memory function				P
Multimedia Upgrade Package — includes 12.3-in. Toyota Audio Multimedia touchscreen		P		
Cold Weather Package — includes heated steering wheel and heated front seats	P	P		
Power tilt/slide moonroof (removal of overhead sunglasses storage)	O	O		
Panoramic glass roof with front power tilt/slide moonroof (removal of overhead sunglasses storage)			O	O

## CAMRY SPECIFICATIONS

S = Standard O = Optional P = Package

### Mechanical/Performance

	LE	SE	XSE	XLE
<b>ENGINE</b>				
225 net combined system hp (FWD)	S	S	S	S
232 net combined system hp (AWD)	O	O	O	O
Hybrid engine: 2.5-Liter, 4-cylinder DOHC 16-valve, Variable Valve Timing-intelligence (VVT-i) with Variable Valve Timing-intelligence by Electric motor (VVT-iE) on the intake side, 183 hp @ 6000 rpm, 163 lb.-ft. @ 3600-5200 rpm	S	S	S	S
<b>ELECTRIC MOTOR</b>				
Permanent Magnet Motor (100 kW, 134 hp)	S	S	S	S
Permanent Magnet Rear Motor (30 kW, 40 hp)	O	O	O	O
<b>TRACTION BATTERY</b>				
Sealed Lithium-ion (Li-ion)	S	S	S	S
<b>TRANSMISSION</b>				
Electronically controlled Continuously Variable Transmission (ECVT) with sequential shift mode	S	S	S	S
<b>DRIVETRAIN</b>				
Front-Wheel Drive (FWD)	S	S	S	S
Electronic On-Demand All-Wheel Drive (AWD)	O	O	O	O
<b>SUSPENSION</b>				
Independent MacPherson strut front suspension with stabilizer bar; multi-link rear suspension with stabilizer bar, sport-tuned shock absorbers and springs, and front strut tower bracing		S	S	
Independent MacPherson strut front suspension with stabilizer bar; multi-link rear suspension with stabilizer bar and front strut tower bracing	S			S
<b>STEERING</b>				
Electric Power Steering (EPS); power-assisted rack-and-pinion	S	S	S	S
Turning circle diameter, curb to curb (ft.)	37.4	37.4	37.4	37.4
<b>BRAKES</b>				
Electronically Controlled Brake (ECB) system	S	S	S	S
Power-assisted ventilated 12-in. front disc brakes; solid 11.06-in. rear disc brakes	S	S	S	S

### Dimensions

<b>EXTERIOR (in.)</b>				
Overall height	56.9	56.9	56.9	56.9
Overall width	72.4	72.4	72.4	72.4
Overall length	193.5	193.5	193.5	193.5
Wheelbase	111.2	111.2	111.2	111.2
Ground clearance	5.4	5.4	5.4	5.4
Track (front/rear)	63.0/63.7	63.0/63.7	63.0/63.7	63.0/63.7
<b>INTERIOR (in.)</b>				
Head room front/rear without moonroof (with moonroof)	38.3/37.6 (37.5/37.6)	38.3/37.6 (37.5/37.6)	38.3/37.6 (37.5/37.6)	38.3/37.6 (37.5/37.6)
Shoulder room front/rear	57.7/55.7	57.7/55.7	57.7/55.7	57.7/55.7
Hip room front/rear	55.4/54.6	55.4/54.6	55.4/54.6	55.4/54.6
Leg room front/rear	42.1/38.0	42.1/38.0	42.1/38.0	42.1/38.0

### Weights and Capacities

Curb weight (lb.) FWD/AWD-equipped	3,450/3,594	3,494/3,627	3,538/3,682	3,516/3,649
EPA passenger volume (cu. ft.) without moonroof/AWD-equipped	99.9/99.9	99.9/99.9	99.9/99.9	99.9/99.9
EPA passenger volume (cu. ft.) with moonroof/AWD-equipped	98.8/98.8	98.8/98.8	98.8/98.8	98.8/98.8
Cargo volume, rear seatbacks up (cu. ft.) <sup>59</sup>	15.1	15.1	15.1	15.1
Fuel tank (gal.) FWD/AWD-equipped	13	13	13	13
Seating capacity	5	5	5	5

### Tires

All-season	P205/65 R16	P235/45 R18	P235/40 R19	P235/45 R18
Summer	TBD	TBD	TBD	TBD
Spare: Temporary	S	S	S	S

### Mileage Estimates (mpg city/highway/combined)<sup>1</sup>

Front-Wheel Drive (FWD)	53/50/51	48/47/47	48/47/47	48/47/47
All-Wheel Drive (AWD)	51/49/50	46/46/46	44/43/44	46/46/46



## DISCLOSURES

1. EPA-estimated 52 city/50 hwy/51 combined mpg rating for 2025 Camry LE FWD; EPA-estimated 51 city/50 hwy/50 combined mpg rating for 2025 Camry LE AWD; projected EPA-estimated 48 city/47 hwy/47 combined mpg rating for 2025 Camry SE, XSE and XLE FWD as determined by manufacturer; projected EPA-estimated 46 city/46 hwy/46 combined mpg rating for 2025 Camry SE and XLE AWD as determined by manufacturer; and projected EPA-estimated 44 city/43 hwy/44 combined mpg rating for 2025 Camry XSE AWD as determined by manufacturer. EPA estimates available for LE models only at time of posting. Use for comparison purposes only. Your mileage will vary for many reasons, including your vehicle's condition and how/where you drive. See [www.fueleconomy.gov](http://www.fueleconomy.gov). **2.** Traffic Jam Assist is not an automated driving system, requires driver supervision at all times, and is designed to function on controlled access freeways at speeds of 25 mph or less. Use this system in accordance with applicable laws. Before operating, refer to *Owner's Manual* for instructions and limitations. **3.** Do not rely exclusively on Blind Spot Monitor. Look over shoulder and use turn signal. See *Owner's Manual* for limitations. **4.** Do not rely exclusively on the Rear Cross-Traffic Alert. Visually confirm clearance during use. See *Owner's Manual* for limitations. **5.** Do not overly rely on the Front Cross-Traffic Alert system. Always visually confirm that it is safe to proceed. See *Owner's Manual* for limitations. **6.** To wirelessly use Apple CarPlay® on your car display, you need a compatible smartphone with an active data plan. You can check which smartphones are compatible at <https://www.apple.com/ios/carplay/>. Operability depends on network availability, a cellular connection and GPS signal. Services subject to change at any time without notice. Data charges may apply. To learn more, go to <https://www.toyota.com/audio-multimedia/>. To learn more about Toyota's Connected Services data collection, use, sharing and retention practices, please visit <https://www.toyota.com/support/privacy-rights/>. Apple CarPlay® is a registered trademark of Apple Inc. **7.** iPhone® is a registered trademark of Apple Inc. All rights reserved. **8.** Google, Android, Android Auto, YouTube Music and other marks are trademarks of Google LLC. **9.** Google, Android, Android Auto, YouTube Music and other marks are trademarks of Google LLC. Wireless use of Android Auto requires a compatible Android 11.0+ phone and compatible active data plan. Check [g.co/androidauto/requirements](http://g.co/androidauto/requirements) for compatibility. Operability depends on network availability, a cellular connection and GPS signal. Services subject to change at any time without notice. Data charges may apply. To learn more, go to <https://www.toyota.com/audio-multimedia/>. To learn more about Toyota's Connected Services data collection, use, sharing and retention practices, please visit <https://www.toyota.com/support/privacy-notice/>. **10.** JBL® is a registered trademark of Harman International Industries, Inc. **11.** Service will automatically stop at the end of your trial subscription period unless you decide to continue service. Trial is non-transferable. If you do not wish to enjoy your trial, you can cancel by calling the number below. All SiriusXM services require a subscription, each sold separately by SiriusXM after the trial period. Service subject to the SiriusXM Customer Agreement and Privacy Policy, visit [siriusxm.com](http://siriusxm.com) for complete terms and how to cancel which includes online methods or calling 1-866-635-2349. Some services and features are subject to device capabilities and location availability. Satellite service not available in AK & HI. Content varies by SiriusXM subscription plan. All fees, content and features are subject to change. SiriusXM and related logos are trademarks of Sirius XM Radio Inc. and its respective subsidiaries. **12.** Toyota Connected Services depend on certain factors outside of Toyota's control in order to operate, including cellular network availability and GPS signal. Without either of these things, operability may be limited or precluded, including access to response center and emergency support. Services vary by vehicle and are subject to change at any time without notice. Requires app download/registration and subscription after trial (if applicable). Terms of Use apply. Data charges may apply. See *Owner's Manual* and <https://www.toyota.com/connected-services/>. For Toyota's Connected Services' data collection, use, sharing and retention practices, please visit <https://www.toyota.com/support/privacy-notice/>. All trials begin on original purchase or lease date of new vehicle, with the exception of Wi-Fi for which trial begins at time of activation. Paid subscription required after trial (if applicable). **13.** Use only if aware of circumstances surrounding vehicle and it is legal and safe to do so (e.g., do not remotely start a gas engine vehicle in an enclosed space or if vehicle is occupied by a child). Remote Connect depends on certain factors outside of Toyota's control in order to operate, including 4G network availability, a cellular connection and GPS signal. Without any one or more of these things, operability may be limited or precluded. Services subject to change at any time without notice. Digital Key also requires Bluetooth® connectivity. Remote start/stop not available on manual transmission-equipped models. Remote start/stop and/or lock/unlock available on select models. Remote Connect is included with select paid Connected Services packages. See your Toyota dealer for details. Terms of Use apply. Data charges may apply. See *Owner's Manual* and <https://www.toyota.com/connected-services/> for additional details. To learn about Toyota's Connected Services' data collection, use, sharing and retention practices, please visit <https://www.toyota.com/support/privacy-notice/>. Trial period begins on original purchase or lease date of new vehicle. Paid subscription required after trial (if applicable). Terms of Use apply. **14.** An active Remote Connect trial or subscription is required to use the features mentioned in the Toyota app. **15.** Service not available everywhere or in every vehicle. Depends on cellular network availability and GPS signal. Without either of these things, operability may be limited or precluded. Up to 5 devices can be supported using in-vehicle connectivity. Services subject to change at any time without notice. The Wi-Fi Connect trial begins at the time of enrollment and expires the earlier of 3GB data use or the 1-month trial period ends. Paid subscription required after trial. Select models include Integrated Streaming capability, which requires a separate subscription to third-party provider services. Data charges may apply. Valid in the contiguous U.S. and Alaska. Go to <https://myvehicle.att.com/#/toyota/learn?language=en&country=US> for terms and conditions. **16.** Apple Music and the Apple logo are trademarks of Apple Inc., registered in the U.S. and other countries. Requires Wi-Fi Connect subscription after trial (if applicable) and your own Apple Music account. **17.** Amazon Music, and all related marks are trademarks of Amazon Technologies, Inc. or its affiliates. **18.** Safety Connect® depends on factors outside of Toyota's control in order to operate, including cellular network availability and GPS signal. Without either of these things, operability may be limited or precluded, including access to response center and emergency support. Stolen vehicle police report required to use Stolen Vehicle Locator. If subscription includes Automatic Collision Notification, it will activate only in limited circumstances. Services vary by vehicle and are subject to change at any time without notice. Terms of Use apply. Data charges may apply. See *Owner's Manual* and <https://www.toyota.com/connected-services/>. For Toyota's Connected Services' data collection, use, sharing and retention practices, please visit <https://www.toyota.com/support/privacy-notice/>. A Safety Connect® trial is included for up to 10 years on select vehicles with paid Connected Services packages. See your Toyota dealer for details. 4G network dependent. **19.** Enhanced 24/7 Roadside Assistance allows in-vehicle SOS button to assist response agent to identify vehicle location. Unlimited mileage coverage effective with an active Safety Connect® trial, which is dependent on 4G network and GPS signal availability. Enhanced Roadside Assistance does not include parts and fluids, except limited emergency gas delivery. Towing distance up to 25 miles. Restrictions apply. Service subject to change at any time. Available in the continental U.S. and Canada. See Toyota dealer for details and exclusions. **20.** Building and/or parking structures may limit system effectiveness. Stolen vehicle police report required to use Stolen Vehicle Locator. For additional assistance contact the Toyota Customer Experience Center at 1-800-331-4331. **21.** Drive Connect availability and accuracy depend on certain factors outside of Toyota's control in order to operate, including 4G network availability, a cellular connection and GPS signal. Without any one or more of these things, operability may be limited or precluded. Services subject to change at any time without notice. Requires app download/registration and subscription after trial (if applicable). Terms of Use apply. Data charges may apply. See *Owner's Manual* and <https://www.toyota.com/connected-services/> for limitations. To learn about Toyota's Connected Services data collection, use, sharing and retention practices, visit <https://www.toyota.com/support/privacy-notice/>. Trial period begins on original purchase or lease date of new vehicle. Paid subscription required after trial (if applicable). Terms of Use apply. **22.** On select models, Destination Assist will require a trial or subscription to Drive Connect. Availability and accuracy depend on certain factors outside of Toyota's control in order to operate, including a cellular connection and GPS signal. Without either of these, operability may be limited or precluded. Services subject to change at any time without notice. Requires app download/registration and subscription to Drive Connect after trial (if applicable). Terms of Use apply. Data charges may apply. See *Owner's Manual* and <https://www.toyota.com/connected-services/> for limitations. To learn about Toyota's Connected Services data collection, use, sharing and retention practices, visit <https://www.toyota.com/support/privacy-notice/>. The Destination Assist trial period begins on original purchase or lease date of new vehicle. Paid subscription required after trial (if applicable). Terms of Use apply. **23.** Intelligent Assistant requires a trial or subscription to Drive Connect. Drive Connect availability and accuracy depend on certain factors outside of Toyota's control in order to operate, including 4G network availability, a cellular connection and GPS signal. Without any one or more of these things, operability may be limited or precluded. Services subject to change at any time without notice. Requires app download/registration and subscription after trial (if applicable). Terms of Use apply. Data charges may apply. See *Owner's Manual* and <https://www.toyota.com/connected-services/> for limitations. To learn about Toyota's Connected Services data collection, use, sharing and retention practices, visit <https://www.toyota.com/support/privacy-notice/>. **24.** Cloud Navigation requires a trial or subscription to Drive Connect. Drive Connect availability and accuracy depend on certain factors outside of Toyota's control in order to operate, including 4G network availability, a cellular connection and GPS signal. Without any one or more of these things, operability may be limited or precluded. Services subject to change at any time without notice. Requires app download/registration and subscription after trial (if applicable). Terms of Use apply. Data charges may apply. See *Owner's Manual* and <https://www.toyota.com/connected-services/> for limitations. To learn about Toyota's Connected Services data collection, use, sharing and retention practices, visit <https://www.toyota.com/support/privacy-notice/>. **25.** Service Connect depends on certain factors outside of Toyota's control in order to operate, including cellular network availability and GPS signal. Without either of these things, operability may be limited or precluded. Information provided is based on the last time data was collected from vehicle and is not real-time data. Services vary by vehicle and are subject to change at any time without notice. Terms of Use apply. Data charges may apply. See usage precautions and service limitations in *Owner's Manual* and <https://www.toyota.com/connected-services/>. To learn about Toyota's Connected Services' data collection, use, sharing and retention practices, please visit <https://www.toyota.com/support/privacy-notice/>. The Service Connect trial is included for up to 10 years. 4G network dependent. **26.** Toyota Safety Sense™ effectiveness is dependent on many factors including road, weather and vehicle conditions. Drivers are responsible for their own safe driving. Always pay attention to your surroundings and drive safely. See *Owner's Manual* for limitations. **27.** The Pre-Collision System (PCS) with Pedestrian Detection (PD) is designed to determine if impact is imminent and help reduce impact speed and damage in certain frontal collisions involving a vehicle, a pedestrian, a bicycle, or a motorcyclist. PCS w/PD is not a substitute for safe and attentive driving. System effectiveness depends on many factors, such as speed, size and position of pedestrian or bicyclist and weather, light and road conditions. See *Owner's Manual* for limitations. **28.** Full-Speed Range Dynamic Radar Cruise Control and Dynamic Radar Cruise Control are not substitutes for safe and attentive driving. See *Owner's Manual* for instructions and limitations. **29.** Lane Departure Alert with Steering Assist is designed to read visible lane markers under certain conditions. It provides a visual/audible alert and slight steering force when lane departure is detected. It is not a collision-avoidance system or a substitute for safe and attentive driving. Effectiveness depends on many factors including road, weather and vehicle conditions. See *Owner's Manual* for limitations. **30.** Automatic High Beams operate at speeds above 21 mph. See *Owner's Manual* for instruction and limitations. **31.** The Lane Tracing Assist (LTA) lane centering function is designed to read visible lane markers and detect other vehicles under certain conditions. It is only operational when DRCC is engaged. Not available on vehicles with manual transmissions. See *Owner's Manual* for limitations. **32.** Road Sign Assist only recognizes certain road signs. See *Owner's Manual* for limitations. **33.** Proactive Driving Assist (PDA) is designed to detect certain objects or curves in the road and provide gentle braking and/or steering support. PDA is not a substitute for safe and attentive driving. System effectiveness depends on many factors, such as speed, size and position of detected objects and weather, light and road conditions. See *Owner's Manual* for additional limitations and details. **34.** EV Mode lets you operate solely on battery power at low speeds for short distances and in limited circumstances, such as in a parking garage. Different conditions may prevent or limit usage. See your *Owner's Manual* for instructions and limitations. **35.** Charging may not be compatible with all mobile phones, smart devices, tablets, e-readers, MP3/WMA players and like models. **36.** Wireless charging may not be

## DISCLOSURES

compatible with all mobile phones, smart devices, tablets, e-readers, MP3/WMA players and like products. **37.** The Tire Pressure Monitor System alerts the driver when tire pressure is critically low. For optimal tire wear and performance, tire pressure should be checked regularly with a gauge; do not rely solely on the monitor system. See *Owner's Manual* for limitations and details. **38.** Airbag systems supplement the seatbelts and are designed to inflate only under certain conditions and in certain types of severe collisions. Always wear seatbelt, sit upright in middle and as far back in seat as possible to help decrease risk of injury. Do not put objects in front of an airbag. See *Owner's Manual* for limitations. **39.** HomeLink® and the HomeLink® house icon are registered trademarks of Gentex Corporation. **40.** SofTex® is a registered trademark of Toyota Motor Sales, U.S.A., Inc. **41.** Digital Key function requires Remote Connect trial or subscription. Use only if aware of circumstances surrounding vehicle and it is legal and safe to do so (e.g., do not remotely start engine if vehicle is in an enclosed space or vehicle is occupied by a child). Remote Connect depends on factors outside of Toyota's control, including an operative telematics device, a cellular connection, GPS signal, and the availability of a compatible wireless network, without which system functionality and availability may be limited or precluded. Digital Key also requires Bluetooth® connectivity. Service may vary by vehicle and region. Requires app download and registration/subscription after trial (if applicable). Terms of Use apply. Data charges may apply. Remote start/stop not available on manual transmission-equipped vehicles. Services subject to change at any time without notice. See usage precautions and service limitations in Toyota *Owner's Manual* and at <https://www.toyota.com/connected-services/> for additional details. To learn about Toyota's Connected Services data collection, use, sharing and retention practices, please visit <https://www.toyota.com/privacyvts/>. **42.** Lane Change Assist operates only when Dynamic Radar Cruise Control (DRCC) and Lane Tracing Assist (LTA) are activated. Do not overly rely on this system. Driver must confirm lane is clear. See *Owner's Manual* for limitations. **43.** Do not rely exclusively on Safe Exit Alert. Always look for approaching traffic before exiting the vehicle. See *Owner's Manual* for limitations. **44.** The Panoramic View Monitor does not provide a comprehensive view of the area surrounding your vehicle. Look around to confirm clearance. See *Owner's Manual* for limitations. **45.** Front and Rear Parking Assist with Automatic Braking (PA w/AB) may warn drivers of, and potentially brake for front and rear collisions with certain objects when traveling at low speeds. Drivers should visually confirm clearance during use. See *Owner's Manual* for instructions and limitations. **46.** Do not rely exclusively on the Rear Cross-Traffic Braking. Visually confirm clearance during use. See *Owner's Manual* for limitations. **47.** Extra-cost color. **48.** Dashcam may not record under certain conditions. Use in accordance with applicable laws. See dashcam *Owner's Manual* for details. **49.** Toyota strives to build vehicles to match customer interest and thus they typically are built with popular options and option packages. Not all options/packages are available separately and some may not be available in all regions of the country. See [toyota.com](http://toyota.com) for information about options/packages commonly available in your area. If you would prefer a vehicle without any or with different options, contact your dealer to check for current availability or the possibility of placing a special order. Color(s) depicted may vary based on multiple factors, including ambient lighting and the format in which it is being viewed (e.g., computer, mobile device or print). **50.** Rated for 12 volts/10 amps. See *Owner's Manual* for additional limitations and details. **51.** When the system is on, Automatic Electric Parking Brake is designed to automatically engage the Electric Parking Brake under limited conditions. It may not hold the vehicle under all conditions and does not function when the vehicle is in Reverse. Automatic Electric Parking Brake is not a substitute for manual use of the Electric Parking Brake. See *Owner's Manual* for additional limitations and details. **52.** When the system is on and the vehicle is in Drive, Brake Hold may temporarily keep the brakes engaged after the driver brings the vehicle to a complete stop. See *Owner's Manual* for limitations. **53.** A compatible Bluetooth®-enabled phone must first be paired. Phone performance depends on software, coverage and carrier. The Bluetooth® word mark and logos are registered trademarks of Bluetooth SIG, Inc. Use of such marks by Toyota is under license. **54.** Vehicle Stability Control is not a substitute for safe and attentive driving practices. Factors including speed, road conditions, weather and steering input can affect whether VSC will be effective. See *Owner's Manual* for limitations. **55.** Smart Stop Technology® will reduce power to help the brakes bring vehicle to a stop during certain contemporaneous brake and accelerator pedal applications. See *Owner's Manual* for limitations. **56.** Hill Start Assist Control is designed to minimize backward rolling on steep ascents. Not a substitute for safe driving judgment and practices. Speed, grade, surface conditions, driver input, etc., can all affect HAC function. See *Owner's Manual*. **57.** The engine immobilizer is a state-of-the-art anti-theft system initiated when the key is inserted into ignition switch or a Smart Key fob is in/near the vehicle. Engine will only start if the code in the transponder chip inside the key/fob matches the code in vehicle's immobilizer. The transponder chip is embedded in the key/fob and can be costly to replace. For lost key or fob, see a Toyota dealer or go to [www.aloa.org](http://www.aloa.org) to find a qualified locksmith for high-security key service. **58.** The backup camera does not provide a comprehensive view. Always look over shoulder and use outside mirrors. See *Owner's Manual* for limitations. **59.** Cargo and load capacity limited by weight and distribution. Always properly secure cargo and cargo area. **60.** Accessory shown is not designed, manufactured or evaluated by Toyota. The accessory and any damage to other components or altered performance of the vehicle that may be caused by the accessory are not covered by your vehicle's warranty and Toyota disclaims all liability therefor. For information on the applicable third-party warranty, see <https://www.kurgo.com/lifetime-warranty>.

Toyota strives to build vehicles to match customer interest and thus they typically are built with popular options and option packages. Not all options/packages are available separately and some may not be available in all regions of the country. See [toyota.com](http://toyota.com) for information about options/packages commonly available in your area. If you would prefer a vehicle without any or with different options, contact your dealer to check for current availability or the possibility of placing a special order.

Color(s) depicted may vary based on multiple factors, including ambient lighting and the format in which it is being viewed (e.g., computer, mobile device or print).

Some vehicles are shown with available equipment. Seatbelts should be worn at all times. For details on vehicle specifications, standard features and available equipment in your area, contact your Toyota dealer. A vehicle with particular equipment may not be available at the dealership. Ask your Toyota dealer to help locate a specifically equipped vehicle.

All information presented herein is based on data available at the time of posting, is subject to change without notice and pertains specifically to mainland U.S.A. vehicles only. Vehicles shown may be prototypes, shown using visual effects and/or shown with options. Actual models may vary.



**Mobility**

For Toyota Mobility program details, go to [www.toyota.com/mobility](http://www.toyota.com/mobility) or call the Toyota Brand Engagement Center at 1-800-331-4331